



Full wwPDB X-ray Structure Validation Report ⓘ

Mar 9, 2026 – 09:59 AM UTC

PDB ID : 6S4F / pdb_00006s4f
Title : Structure of human MTHFD2 in complex with TH9619
Authors : Scaletti, E.R.; Gustafsson, R.; Bonagas, N.; Gustafsson, N.M.; Henriksson, M.; Abdurakhmanov, E.; Andersson, Y.; Bengtsson, C.; Borhade, S.; Desroses, M.; Farnegardh, K.; Garg, N.; Gokturk, C.; Haraldsson, M.; Iliev, P.; Jarvius, M.; Jemth, A.S.; Kalderen, C.; Karsten, S.; Klingegard, F.; Koolmeister, T.; Martens, U.; Llona-Minguez, S.; Loseva, O.; Marttila, P.; Michel, M.; Moulson, R.; Nordstrom, H.; Paulin, C.; Pham, T.; Pudelko, L.; Rasti, A.; Roos, A.K.; Sarno, A.; Sandberg, L.; Scobie, M.; Sjoberg, B.; Svensson, R.; Unterlass, J.E.; Vallin, K.; Vo, D.; Wiita, E.; Warpman-Berglund, U.; Homan, E.J.; Helleday, T.; Stenmark, P.
Deposited on : 2019-06-27
Resolution : 2.20 Å(reported)

This is a Full wwPDB X-ray Structure Validation Report for a publicly released PDB entry.

We welcome your comments at validation@mail.wwpdb.org

A user guide is available at

<https://www.wwpdb.org/validation/2017/XrayValidationReportHelp>

with specific help available everywhere you see the ⓘ symbol.

The types of validation reports are described at

<http://www.wwpdb.org/validation/2017/FAQs#types>.

The following versions of software and data (see [references ⓘ](#)) were used in the production of this report:

MolProbity : 4-5-2 with Phenix2.0
Mogul : 2022.3.0, CSD as543be (2022)
Xtriage (Phenix) : 2.0
EDS : 3.0

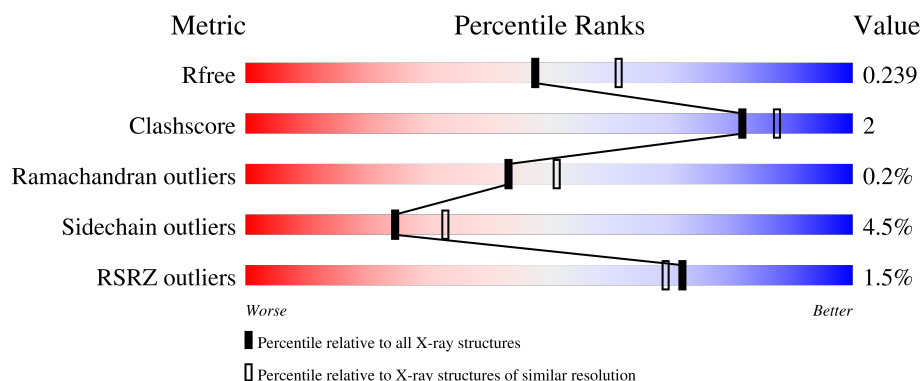
1 Overall quality at a glance

The following experimental techniques were used to determine the structure:

X-RAY DIFFRACTION

The reported resolution of this entry is 2.20 Å.

Percentile scores (ranging between 0-100) for global validation metrics of the entry are shown in the following graphic. The table shows the number of entries on which the scores are based.



Metric	Whole archive (#Entries)	Similar resolution (#Entries, resolution range(Å))
R_{free}	180053	6164 (2.20-2.20)
Clashscore	190562	6851 (2.20-2.20)
Ramachandran outliers	187476	6768 (2.20-2.20)
Sidechain outliers	187428	6769 (2.20-2.20)
RSRZ outliers	180081	6166 (2.20-2.20)

The table below summarises the geometric issues observed across the polymeric chains and their fit to the electron density. The red, orange, yellow and green segments of the lower bar indicate the fraction of residues that contain outliers for ≥ 3 , 2, 1 and 0 types of geometric quality criteria respectively. A grey segment represents the fraction of residues that are not modelled. The numeric value for each fraction is indicated below the corresponding segment, with a dot representing fractions $\leq 5\%$. The upper red bar (where present) indicates the fraction of residues that have poor fit to the electron density. The numeric value is given above the bar.

Mol	Chain	Length	Quality of chain
1	A	316	

Continued on next page...

Buster-report : wwPDB partial adaption of 1.1.7 (2018)
 Percentile statistics : 20250101.v01 (using entries in the PDB archive January 1st 2025)
 CCP4 : 9.0.010 (Gargrove)
 Density-Fitness : 1.0.12
 Ideal geometry (proteins) : Engh & Huber (2001)
 Ideal geometry (DNA, RNA) : Parkinson et al. (1996)
 Validation Pipeline (wwPDB-VP) : 2.49

Continued from previous page...

Mol	Chain	Length	Quality of chain
1	B	316	<div><div></div><div>2%</div><div>86%</div><div>8% • 6%</div></div>

2 Entry composition [i](#)

There are 6 unique types of molecules in this entry. The entry contains 4749 atoms, of which 0 are hydrogens and 0 are deuteriums.

In the tables below, the ZeroOcc column contains the number of atoms modelled with zero occupancy, the AltConf column contains the number of residues with at least one atom in alternate conformation and the Trace column contains the number of residues modelled with at most 2 atoms.

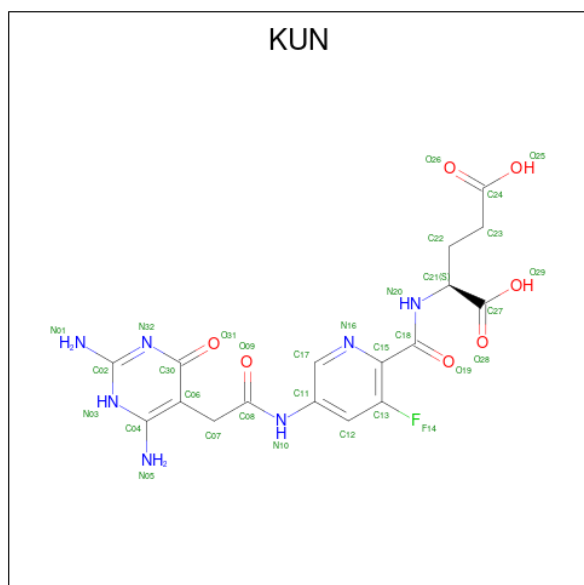
- Molecule 1 is a protein called Bifunctional methylenetetrahydrofolate dehydrogenase/cyclohydrolase, mitochondrial.

Mol	Chain	Residues	Atoms					ZeroOcc	AltConf	Trace
1	A	289	Total	C	N	O	S	0	0	0
			2190	1381	391	407	11			
1	B	298	Total	C	N	O	S	0	0	0
			2254	1422	402	419	11			

There are 2 discrepancies between the modelled and reference sequences:

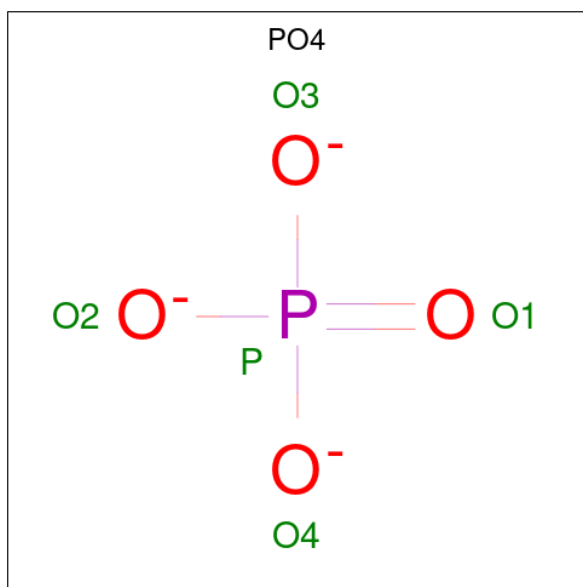
Chain	Residue	Modelled	Actual	Comment	Reference
A	35	MET	-	initiating methionine	UNP P13995
B	35	MET	-	initiating methionine	UNP P13995

- Molecule 2 is (E,4S)-4-[[5-[2-[2,6-bis(azanyl)-4-oxidanylidene-1H-pyrimidin-5-yl]ethanoylamino]-3-fluoranyl-pyridin-2-yl]carbonylamino]pent-2-enedioic acid (CCD ID: KUN) (formula: C₁₇H₁₈FN₇O₇) (labeled as "Ligand of Interest" by depositor).



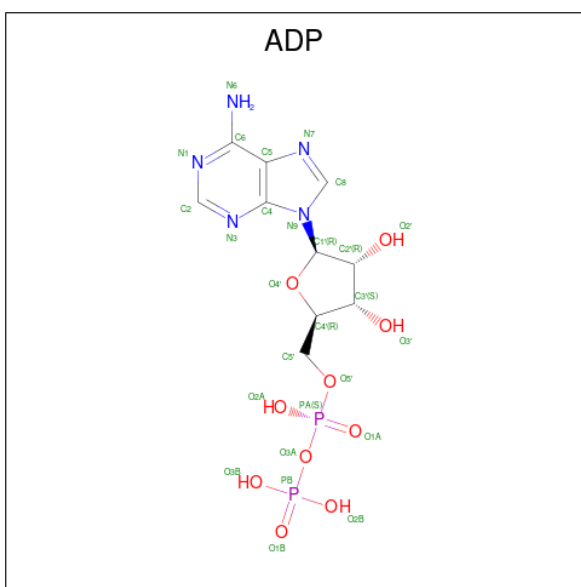
Mol	Chain	Residues	Atoms					ZeroOcc	AltConf
2	A	1	Total	C	F	N	O	0	0
			32	17	1	7	7		
2	B	1	Total	C	F	N	O	0	0
			32	17	1	7	7		

- Molecule 3 is PHOSPHATE ION (CCD ID: PO4) (formula: O_4P).



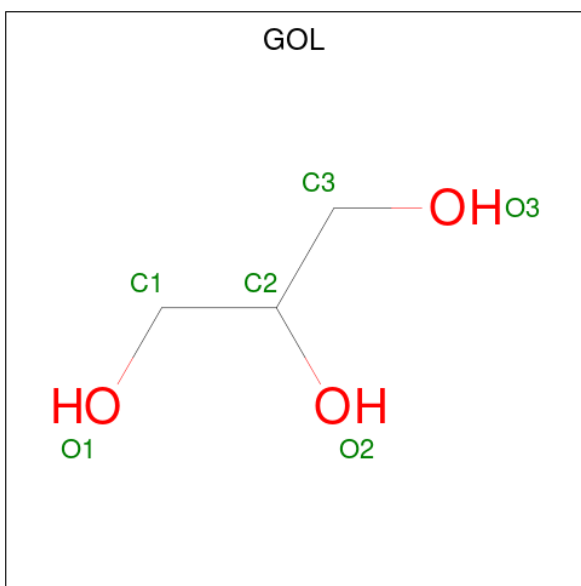
Mol	Chain	Residues	Atoms			ZeroOcc	AltConf
3	A	1	Total	O	P	0	0
			5	4	1		
3	A	1	Total	O	P	0	0
			5	4	1		
3	A	1	Total	O	P	0	0
			5	4	1		
3	A	1	Total	O	P	0	0
			5	4	1		
3	A	1	Total	O	P	0	0
			5	4	1		
3	B	1	Total	O	P	0	0
			5	4	1		
3	B	1	Total	O	P	0	0
			5	4	1		
3	B	1	Total	O	P	0	0
			5	4	1		

- Molecule 4 is ADENOSINE-5'-DIPHOSPHATE (CCD ID: ADP) (formula: $C_{10}H_{15}N_5O_{10}P_2$).



Mol	Chain	Residues	Atoms					ZeroOcc	AltConf
4	A	1	Total	C	N	O	P	0	0
			27	10	5	10	2		

- Molecule 5 is GLYCEROL (CCD ID: GOL) (formula: $\text{C}_3\text{H}_8\text{O}_3$).



Mol	Chain	Residues	Atoms	ZeroOcc	AltConf
5	A	1	Total C O 6 3 3	0	0
5	B	1	Total C O 6 3 3	0	0

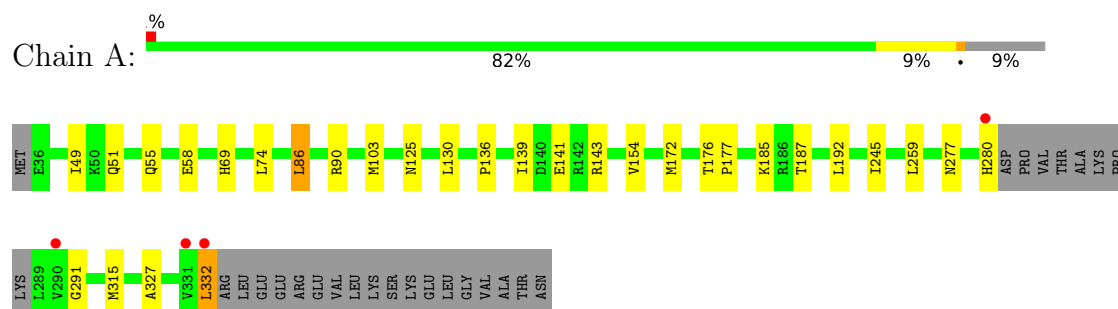
- Molecule 6 is water.

Mol	Chain	Residues	Atoms		ZeroOcc	AltConf
6	A	83	Total 83	O 83	0	0
6	B	79	Total 79	O 79	0	0

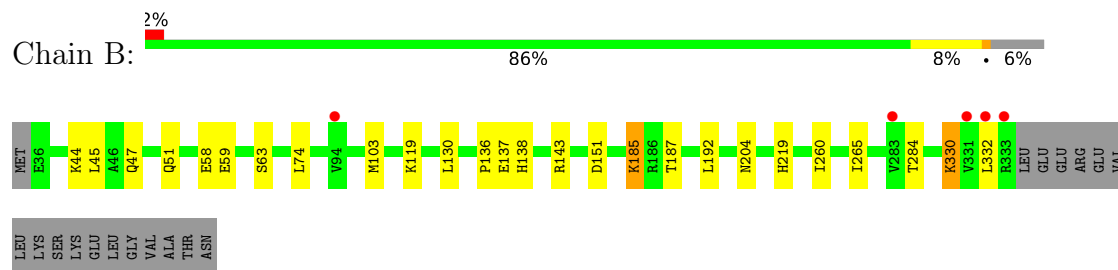
3 Residue-property plots [i](#)

These plots are drawn for all protein, RNA, DNA and oligosaccharide chains in the entry. The first graphic for a chain summarises the proportions of the various outlier classes displayed in the second graphic. The second graphic shows the sequence view annotated by issues in geometry and electron density. Residues are color-coded according to the number of geometric quality criteria for which they contain at least one outlier: green = 0, yellow = 1, orange = 2 and red = 3 or more. A red dot above a residue indicates a poor fit to the electron density ($RSRZ > 2$). Stretches of 2 or more consecutive residues without any outlier are shown as a green connector. Residues present in the sample, but not in the model, are shown in grey.

- Molecule 1: Bifunctional methylenetetrahydrofolate dehydrogenase/cyclohydrolase, mitochondrial



- Molecule 1: Bifunctional methylenetetrahydrofolate dehydrogenase/cyclohydrolase, mitochondrial



4 Data and refinement statistics

Property	Value	Source
Space group	P 65	Depositor
Cell constants a, b, c, α , β , γ	116.89Å 116.89Å 112.97Å 90.00° 90.00° 120.00°	Depositor
Resolution (Å)	75.40 – 2.20 75.40 – 2.20	Depositor EDS
% Data completeness (in resolution range)	99.9 (75.40-2.20) 99.9 (75.40-2.20)	Depositor EDS
R_{merge}	(Not available)	Depositor
R_{sym}	(Not available)	Depositor
$\langle I/\sigma(I) \rangle$ ¹	1.74 (at 2.20Å)	Xtriage
Refinement program	REFMAC 5.8.0158	Depositor
R, R_{free}	0.184 , 0.225 0.196 , 0.239	Depositor DCC
R_{free} test set	2131 reflections (4.79%)	wwPDB-VP
Wilson B-factor (Å ²)	58.9	Xtriage
Anisotropy	0.053	Xtriage
Bulk solvent k_{sol} (e/Å ³), B_{sol} (Å ²)	0.37 , 63.1	EDS
L-test for twinning ²	$\langle L \rangle = 0.50$, $\langle L^2 \rangle = 0.34$	Xtriage
Estimated twinning fraction	0.036 for h,-h-k,-l	Xtriage
F_o, F_c correlation	0.97	EDS
Total number of atoms	4749	wwPDB-VP
Average B, all atoms (Å ²)	70.0	wwPDB-VP

Xtriage's analysis on translational NCS is as follows: *The largest off-origin peak in the Patterson function is 3.18% of the height of the origin peak. No significant pseudotranslation is detected.*

¹Intensities estimated from amplitudes.

²Theoretical values of $\langle |L| \rangle$, $\langle L^2 \rangle$ for acentric reflections are 0.5, 0.333 respectively for untwinned datasets, and 0.375, 0.2 for perfectly twinned datasets.

5 Model quality [i](#)

5.1 Standard geometry [i](#)

Bond lengths and bond angles in the following residue types are not validated in this section: PO4, ADP, GOL, KUN

The Z score for a bond length (or angle) is the number of standard deviations the observed value is removed from the expected value. A bond length (or angle) with $|Z| > 5$ is considered an outlier worth inspection. RMSZ is the root-mean-square of all Z scores of the bond lengths (or angles).

Mol	Chain	Bond lengths		Bond angles	
		RMSZ	$\# Z > 5$	RMSZ	$\# Z > 5$
1	A	0.90	0/2225	0.98	1/3021 (0.0%)
1	B	0.94	0/2292	1.01	1/3114 (0.0%)
All	All	0.92	0/4517	1.00	2/6135 (0.0%)

There are no bond length outliers.

All (2) bond angle outliers are listed below:

Mol	Chain	Res	Type	Atoms	Z	Observed(°)	Ideal(°)
1	B	137	GLU	N-CA-C	5.37	117.89	111.71
1	A	141	GLU	N-CA-C	5.11	117.52	111.33

There are no chirality outliers.

There are no planarity outliers.

5.2 Too-close contacts [i](#)

In the following table, the Non-H and H(model) columns list the number of non-hydrogen atoms and hydrogen atoms in the chain respectively. The H(added) column lists the number of hydrogen atoms added and optimized by MolProbity. The Clashes column lists the number of clashes within the asymmetric unit, whereas Symm-Clashes lists symmetry-related clashes.

Mol	Chain	Non-H	H(model)	H(added)	Clashes	Symm-Clashes
1	A	2190	0	2264	15	0
1	B	2254	0	2332	8	0
2	A	32	0	0	0	0
2	B	32	0	0	0	0
3	A	25	0	0	0	0
3	B	15	0	0	1	0
4	A	27	0	12	0	0

Continued on next page...

Continued from previous page...

Mol	Chain	Non-H	H(model)	H(added)	Clashes	Symm-Clashes
5	A	6	0	8	0	0
5	B	6	0	8	0	0
6	A	83	0	0	1	0
6	B	79	0	0	1	0
All	All	4749	0	4624	23	0

The all-atom clashscore is defined as the number of clashes found per 1000 atoms (including hydrogen atoms). The all-atom clashscore for this structure is 2.

All (23) close contacts within the same asymmetric unit are listed below, sorted by their clash magnitude.

Atom-1	Atom-2	Interatomic distance (Å)	Clash overlap (Å)
1:A:74:LEU:HD23	1:A:103:MET:HE2	1.82	0.60
1:A:51:GLN:HE21	1:A:55:GLN:HE21	1.51	0.57
1:B:219:HIS:HB3	3:B:402:PO4:O4	2.07	0.55
1:A:49:ILE:CD1	1:A:315:MET:HE1	2.39	0.52
1:A:154:VAL:HA	1:A:172:MET:HE3	1.92	0.52
1:B:192:LEU:C	1:B:192:LEU:HD23	2.37	0.50
1:A:192:LEU:C	1:A:192:LEU:HD23	2.39	0.48
1:A:51:GLN:HE21	1:A:55:GLN:NE2	2.11	0.47
1:B:187:THR:HG22	1:B:187:THR:O	2.14	0.47
1:A:172:MET:HE1	1:A:327:ALA:HB2	1.98	0.45
1:B:260:ILE:CG2	1:B:265:ILE:HD11	2.47	0.45
1:B:185:LYS:HE3	6:B:501:HOH:O	2.17	0.45
1:B:74:LEU:HD23	1:B:103:MET:HE2	1.99	0.44
1:A:86:LEU:HD23	1:A:90:ARG:CZ	2.47	0.44
1:A:332:LEU:C	1:A:332:LEU:HD12	2.43	0.44
1:A:69:HIS:HB3	1:A:125:ASN:O	2.18	0.43
1:A:277:ASN:ND2	1:A:291:GLY:O	2.46	0.43
1:A:176:THR:HB	1:A:177:PRO:HD3	2.01	0.43
1:B:151:ASP:HB2	1:B:330:LYS:HE2	2.00	0.43
1:A:136:PRO:HD2	1:A:139:ILE:HD12	2.00	0.43
1:B:136:PRO:HB2	1:B:138:HIS:CE1	2.54	0.43
1:A:143:ARG:HD2	6:A:568:HOH:O	2.20	0.41
1:A:187:THR:O	1:A:187:THR:HG22	2.21	0.40

There are no symmetry-related clashes.

5.3 Torsion angles [i](#)

5.3.1 Protein backbone [i](#)

In the following table, the Percentiles column shows the percent Ramachandran outliers of the chain as a percentile score with respect to all X-ray entries followed by that with respect to entries of similar resolution.

The Analysed column shows the number of residues for which the backbone conformation was analysed, and the total number of residues.

Mol	Chain	Analysed	Favoured	Allowed	Outliers	Percentiles	
1	A	285/316 (90%)	278 (98%)	7 (2%)	0	100	100
1	B	296/316 (94%)	288 (97%)	7 (2%)	1 (0%)	36	42
All	All	581/632 (92%)	566 (97%)	14 (2%)	1 (0%)	43	51

All (1) Ramachandran outliers are listed below:

Mol	Chain	Res	Type
1	B	284	THR

5.3.2 Protein sidechains [i](#)

In the following table, the Percentiles column shows the percent sidechain outliers of the chain as a percentile score with respect to all X-ray entries followed by that with respect to entries of similar resolution.

The Analysed column shows the number of residues for which the sidechain conformation was analysed, and the total number of residues.

Mol	Chain	Analysed	Rotameric	Outliers	Percentiles	
1	A	241/265 (91%)	233 (97%)	8 (3%)	33	45
1	B	248/265 (94%)	234 (94%)	14 (6%)	19	24
All	All	489/530 (92%)	467 (96%)	22 (4%)	24	33

All (22) residues with a non-rotameric sidechain are listed below:

Mol	Chain	Res	Type
1	A	58	GLU
1	A	86	LEU
1	A	130	LEU
1	A	185	LYS
1	A	245	ILE

Continued on next page...

Continued from previous page...

Mol	Chain	Res	Type
1	A	259	LEU
1	A	280	HIS
1	A	332	LEU
1	B	44	LYS
1	B	45	LEU
1	B	47	GLN
1	B	51	GLN
1	B	58	GLU
1	B	59	GLU
1	B	63	SER
1	B	119	LYS
1	B	130	LEU
1	B	143	ARG
1	B	185	LYS
1	B	204	ASN
1	B	330	LYS
1	B	332	LEU

Sometimes sidechains can be flipped to improve hydrogen bonding and reduce clashes. All (6) such sidechains are listed below:

Mol	Chain	Res	Type
1	A	55	GLN
1	A	125	ASN
1	A	169	GLN
1	A	195	ASN
1	B	55	GLN
1	B	69	HIS

5.3.3 RNA [i](#)

There are no RNA molecules in this entry.

5.4 Non-standard residues in protein, DNA, RNA chains [i](#)

There are no non-standard protein/DNA/RNA residues in this entry.

5.5 Carbohydrates [i](#)

There are no oligosaccharides in this entry.

5.6 Ligand geometry

13 ligands are modelled in this entry.

In the following table, the Counts columns list the number of bonds (or angles) for which Mogul statistics could be retrieved, the number of bonds (or angles) that are observed in the model and the number of bonds (or angles) that are defined in the Chemical Component Dictionary. The Link column lists molecule types, if any, to which the group is linked. The Z score for a bond length (or angle) is the number of standard deviations the observed value is removed from the expected value. A bond length (or angle) with $|Z| > 2$ is considered an outlier worth inspection. RMSZ is the root-mean-square of all Z scores of the bond lengths (or angles).

Mol	Type	Chain	Res	Link	Bond lengths			Bond angles		
					Counts	RMSZ	# Z > 2	Counts	RMSZ	# Z > 2
4	ADP	A	407	-	28,29,29	1.64	5 (17%)	43,45,45	2.25	10 (23%)
3	PO4	A	406	-	4,4,4	0.63	0	6,6,6	0.86	0
3	PO4	A	404	-	4,4,4	0.90	0	6,6,6	0.65	0
2	KUN	A	401	-	31,33,33	2.14	8 (25%)	35,46,46	2.11	11 (31%)
3	PO4	A	405	-	4,4,4	0.64	0	6,6,6	1.12	0
3	PO4	A	402	-	4,4,4	0.90	0	6,6,6	1.16	1 (16%)
3	PO4	A	403	-	4,4,4	0.85	0	6,6,6	1.14	0
3	PO4	B	402	-	4,4,4	1.27	0	6,6,6	1.00	0
5	GOL	A	408	-	5,5,5	0.37	0	5,5,5	1.00	0
5	GOL	B	405	-	5,5,5	0.36	0	5,5,5	0.68	0
3	PO4	B	403	-	4,4,4	1.38	0	6,6,6	1.72	1 (16%)
2	KUN	B	401	-	31,33,33	2.46	14 (45%)	35,46,46	2.26	10 (28%)
3	PO4	B	404	-	4,4,4	0.91	0	6,6,6	0.50	0

In the following table, the Chirals column lists the number of chiral outliers, the number of chiral centers analysed, the number of these observed in the model and the number defined in the Chemical Component Dictionary. Similar counts are reported in the Torsion and Rings columns. '-' means no outliers of that kind were identified.

Mol	Type	Chain	Res	Link	Chirals	Torsions	Rings
4	ADP	A	407	-	-	3/16/32/32	0/3/3/3
2	KUN	A	401	-	-	3/25/25/25	0/2/2/2
5	GOL	A	408	-	-	0/4/4/4	-
5	GOL	B	405	-	-	2/4/4/4	-
2	KUN	B	401	-	-	1/25/25/25	0/2/2/2

All (27) bond length outliers are listed below:

Mol	Chain	Res	Type	Atoms	Z	Observed(Å)	Ideal(Å)
2	B	401	KUN	C07-C08	6.98	1.61	1.51
2	A	401	KUN	C23-C24	6.34	1.65	1.50
2	B	401	KUN	C23-C24	5.02	1.62	1.50
4	A	407	ADP	C5-C4	5.00	1.48	1.39
2	A	401	KUN	C02-N01	4.05	1.43	1.34
2	A	401	KUN	C21-C27	3.87	1.62	1.52
2	B	401	KUN	C30-C06	-3.74	1.42	1.45
4	A	407	ADP	PA-O3A	3.56	1.63	1.59
2	B	401	KUN	C07-C06	-3.54	1.45	1.51
2	A	401	KUN	C12-C13	3.50	1.43	1.37
4	A	407	ADP	C5-C6	3.33	1.50	1.41
2	B	401	KUN	C02-N32	3.27	1.41	1.33
2	B	401	KUN	C18-N20	3.05	1.41	1.34
4	A	407	ADP	C8-N7	2.92	1.37	1.31
2	A	401	KUN	C22-C21	2.88	1.60	1.53
2	B	401	KUN	C04-N05	2.68	1.39	1.34
2	B	401	KUN	C15-C18	2.68	1.54	1.50
2	B	401	KUN	C12-C13	2.67	1.42	1.37
2	B	401	KUN	C04-N03	2.49	1.42	1.37
2	B	401	KUN	C22-C21	2.46	1.59	1.53
2	A	401	KUN	C02-N32	2.42	1.39	1.33
2	B	401	KUN	C11-N10	-2.36	1.36	1.41
2	B	401	KUN	C02-N01	2.26	1.39	1.34
2	A	401	KUN	C18-N20	2.20	1.39	1.34
2	A	401	KUN	C22-C23	2.11	1.59	1.52
2	B	401	KUN	C21-N20	-2.04	1.41	1.45
4	A	407	ADP	C5-N7	-2.02	1.35	1.39

All (33) bond angle outliers are listed below:

Mol	Chain	Res	Type	Atoms	Z	Observed(°)	Ideal(°)
4	A	407	ADP	C5-C4-N3	-7.70	116.11	126.72
2	B	401	KUN	C11-C12-C13	5.55	123.47	118.82
4	A	407	ADP	N3-C4-N9	5.27	136.12	127.17
2	B	401	KUN	C07-C08-N10	5.01	120.78	115.06
2	A	401	KUN	C07-C08-N10	4.95	120.71	115.06
4	A	407	ADP	C4-C5-N7	-4.77	105.13	110.58
4	A	407	ADP	C2-N3-C4	4.74	123.41	111.83
4	A	407	ADP	O4'-C1'-N9	4.63	116.98	108.09
2	A	401	KUN	C11-C12-C13	4.49	122.57	118.82
2	B	401	KUN	O19-C18-C15	-4.27	113.94	120.75
3	B	403	PO4	O3-P-O2	-3.86	95.89	107.91
2	B	401	KUN	C12-C11-C17	-3.70	115.51	118.13

Continued on next page...

Continued from previous page...

Mol	Chain	Res	Type	Atoms	Z	Observed(°)	Ideal(°)
4	A	407	ADP	N3-C2-N1	-3.67	123.03	128.58
4	A	407	ADP	C5-N7-C8	3.63	109.15	103.45
2	B	401	KUN	C12-C13-C15	-3.58	114.60	122.35
2	B	401	KUN	C21-N20-C18	3.56	130.09	121.56
2	A	401	KUN	C12-C13-C15	-3.51	114.77	122.35
2	A	401	KUN	O19-C18-C15	-3.50	115.17	120.75
2	A	401	KUN	C21-N20-C18	3.44	129.81	121.56
2	A	401	KUN	C27-C21-N20	-3.41	102.66	110.57
2	B	401	KUN	C23-C22-C21	3.10	118.88	113.16
2	A	401	KUN	C12-C11-C17	-2.95	116.04	118.13
2	A	401	KUN	O31-C30-N32	-2.91	115.36	120.27
2	B	401	KUN	C17-N16-C15	2.83	122.80	117.92
2	B	401	KUN	O31-C30-N32	-2.81	115.54	120.27
2	B	401	KUN	O19-C18-N20	2.55	127.31	122.47
2	A	401	KUN	O09-C08-C07	-2.51	117.45	121.40
4	A	407	ADP	C6-C5-N7	2.49	136.90	132.09
3	A	402	PO4	O4-P-O2	2.37	115.29	107.91
2	A	401	KUN	C17-N16-C15	2.29	121.87	117.92
4	A	407	ADP	O4'-C1'-C2'	-2.23	101.84	106.62
2	A	401	KUN	C22-C21-C27	2.18	115.54	110.35
4	A	407	ADP	N9-C8-N7	-2.16	110.88	113.94

There are no chirality outliers.

All (9) torsion outliers are listed below:

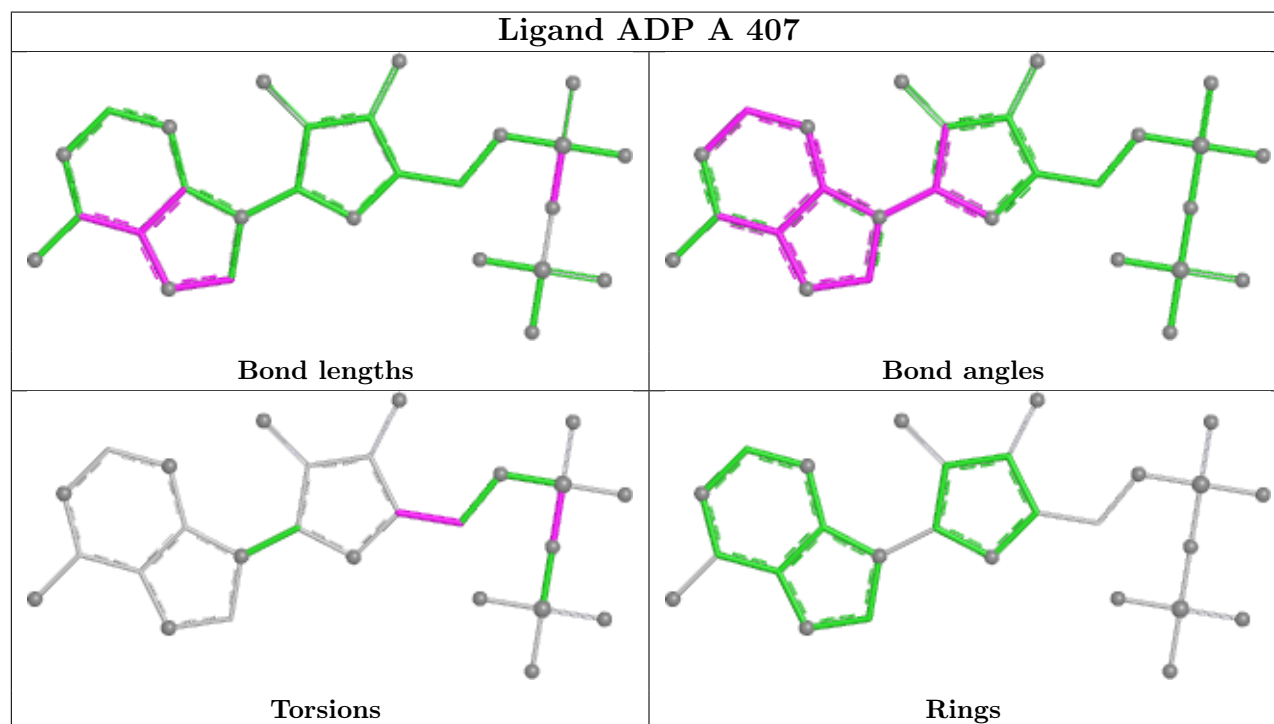
Mol	Chain	Res	Type	Atoms
5	B	405	GOL	C1-C2-C3-O3
5	B	405	GOL	O2-C2-C3-O3
4	A	407	ADP	O4'-C4'-C5'-O5'
4	A	407	ADP	C3'-C4'-C5'-O5'
2	A	401	KUN	C22-C23-C24-O25
2	A	401	KUN	C22-C23-C24-O26
2	A	401	KUN	N20-C21-C22-C23
2	B	401	KUN	C22-C23-C24-O25
4	A	407	ADP	PB-O3A-PA-O2A

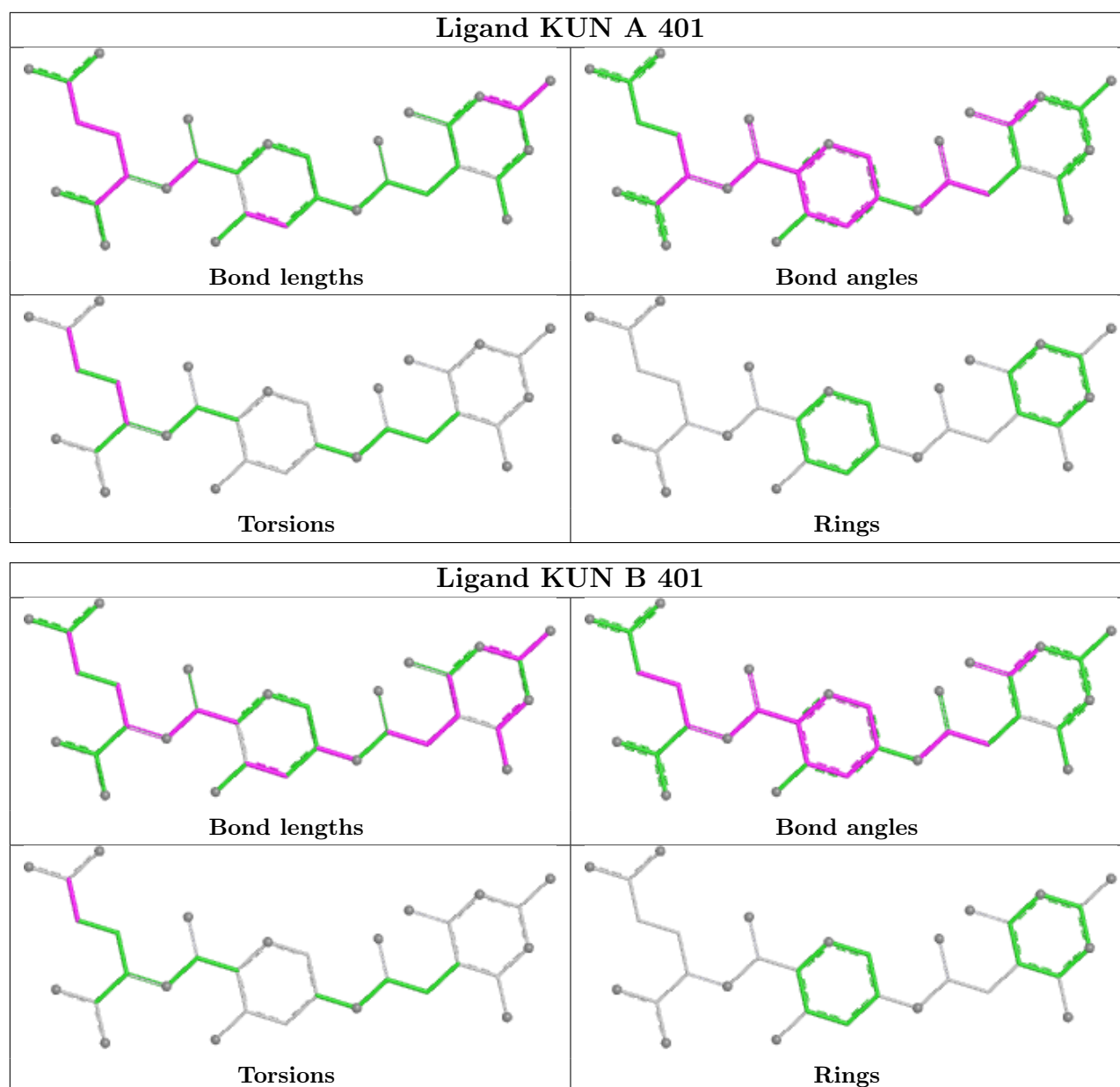
There are no ring outliers.

1 monomer is involved in 1 short contact:

Mol	Chain	Res	Type	Clashes	Symm-Clashes
3	B	402	PO4	1	0

The following is a two-dimensional graphical depiction of Mogul quality analysis of bond lengths, bond angles, torsion angles, and ring geometry for all instances of the Ligand of Interest. In addition, ligands with molecular weight > 250 and outliers as shown on the validation Tables will also be included. For torsion angles, if less than 5% of the Mogul distribution of torsion angles is within 10 degrees of the torsion angle in question, then that torsion angle is considered an outlier. Any bond that is central to one or more torsion angles identified as an outlier by Mogul will be highlighted in the graph. For rings, the root-mean-square deviation (RMSD) between the ring in question and similar rings identified by Mogul is calculated over all ring torsion angles. If the average RMSD is greater than 60 degrees and the minimal RMSD between the ring in question and any Mogul-identified rings is also greater than 60 degrees, then that ring is considered an outlier. The outliers are highlighted in purple. The color gray indicates Mogul did not find sufficient equivalents in the CSD to analyse the geometry.





5.7 Other polymers [i](#)

There are no such residues in this entry.

5.8 Polymer linkage issues [i](#)

There are no chain breaks in this entry.

6 Fit of model and data [i](#)

6.1 Protein, DNA and RNA chains [i](#)

In the following table, the column labelled ‘#RSRZ> 2’ contains the number (and percentage) of RSRZ outliers, followed by percent RSRZ outliers for the chain as percentile scores relative to all X-ray entries and entries of similar resolution. The OWAB column contains the minimum, median, 95th percentile and maximum values of the occupancy-weighted average B-factor per residue. The column labelled ‘Q< 0.9’ lists the number of (and percentage) of residues with an average occupancy less than 0.9.

Mol	Chain	Analysed	<RSRZ>	#RSRZ>2	OWAB(Å ²)	Q<0.9
1	A	289/316 (91%)	0.19	4 (1%) 73 71	47, 65, 93, 127	0
1	B	298/316 (94%)	0.22	5 (1%) 69 66	47, 65, 99, 139	0
All	All	587/632 (92%)	0.21	9 (1%) 72 69	47, 65, 96, 139	0

All (9) RSRZ outliers are listed below:

Mol	Chain	Res	Type	RSRZ
1	A	332	LEU	7.6
1	B	332	LEU	2.8
1	B	283	VAL	2.7
1	A	290	VAL	2.7
1	B	333	ARG	2.5
1	A	331	VAL	2.4
1	A	280	HIS	2.3
1	B	94	VAL	2.3
1	B	331	VAL	2.2

6.2 Non-standard residues in protein, DNA, RNA chains [i](#)

There are no non-standard protein/DNA/RNA residues in this entry.

6.3 Carbohydrates [i](#)

There are no oligosaccharides in this entry.

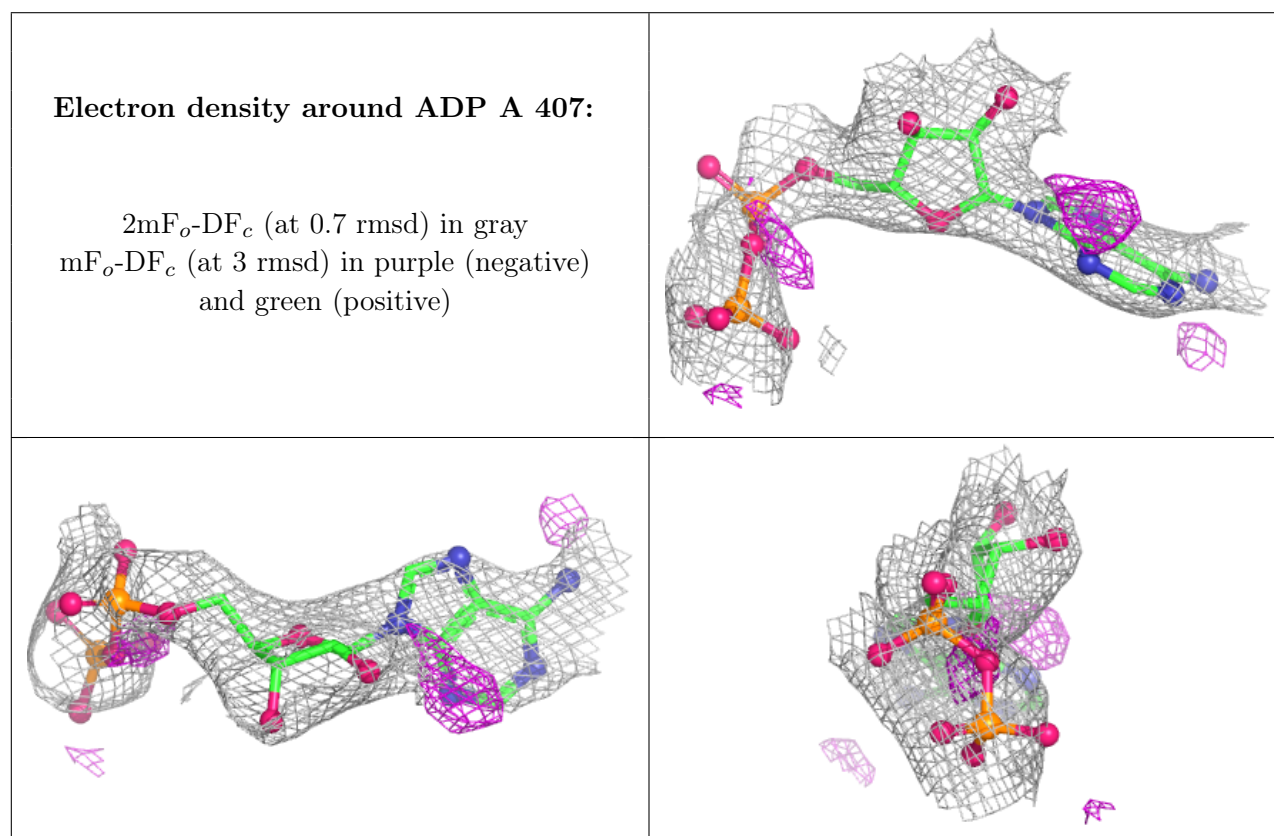
6.4 Ligands [i](#)

In the following table, the Atoms column lists the number of modelled atoms in the group and the number defined in the chemical component dictionary. The B-factors column lists the minimum,

median, 95th percentile and maximum values of B factors of atoms in the group. The column labelled 'Q< 0.9' lists the number of atoms with occupancy less than 0.9.

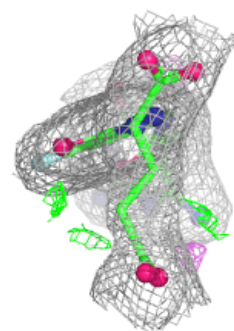
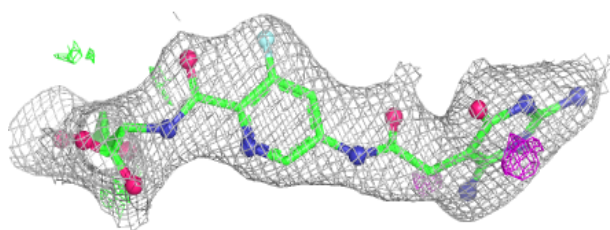
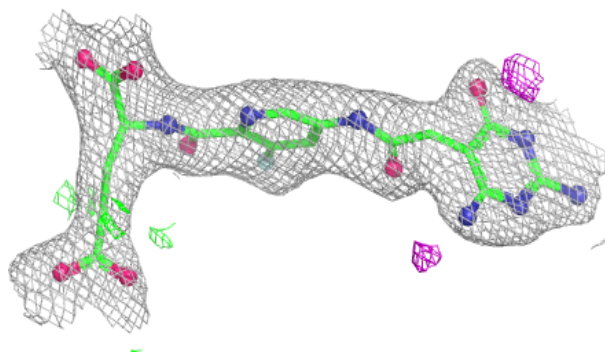
Mol	Type	Chain	Res	Atoms	RSCC	RSR	B-factors(Å ²)	Q<0.9
3	PO4	A	405	5/5	0.74	0.12	109,115,121,137	0
3	PO4	A	406	5/5	0.85	0.12	105,111,135,140	0
3	PO4	B	402	5/5	0.85	0.13	97,101,112,127	0
4	ADP	A	407	27/27	0.85	0.12	69,107,182,192	0
3	PO4	B	404	5/5	0.88	0.09	121,123,125,129	0
3	PO4	A	404	5/5	0.88	0.10	105,111,118,121	0
3	PO4	B	403	5/5	0.89	0.11	80,96,102,116	0
5	GOL	B	405	6/6	0.92	0.14	66,78,79,82	0
2	KUN	A	401	32/32	0.94	0.10	47,61,105,113	0
5	GOL	A	408	6/6	0.95	0.14	65,70,71,78	0
3	PO4	A	403	5/5	0.96	0.07	63,69,75,79	0
2	KUN	B	401	32/32	0.96	0.07	44,53,93,98	0
3	PO4	A	402	5/5	0.99	0.04	67,67,72,74	0

The following is a graphical depiction of the model fit to experimental electron density of all instances of the Ligand of Interest. In addition, ligands with molecular weight > 250 and outliers as shown on the geometry validation Tables will also be included. Each fit is shown from different orientation to approximate a three-dimensional view.

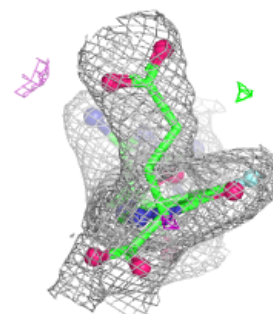
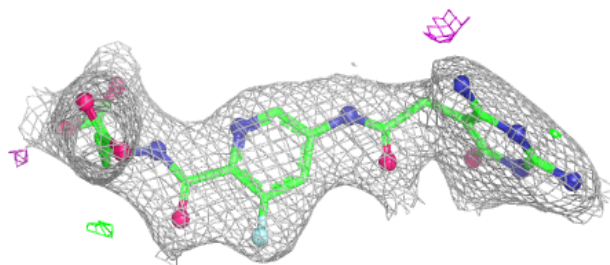
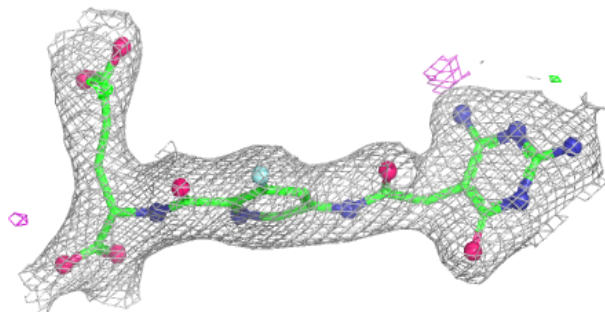


Electron density around KUN A 401:

$2mF_o-DF_c$ (at 0.7 rmsd) in gray
 mF_o-DF_c (at 3 rmsd) in purple (negative)
and green (positive)

**Electron density around KUN B 401:**

$2mF_o-DF_c$ (at 0.7 rmsd) in gray
 mF_o-DF_c (at 3 rmsd) in purple (negative)
and green (positive)



6.5 Other polymers [i](#)

There are no such residues in this entry.