



Full wwPDB X-ray Structure Validation Report ⓘ

Mar 8, 2026 – 02:07 AM UTC

PDB ID : 6WVP / pdb_00006wvp
Title : Crystal Structure of Recombinant Human Acetylcholinesterase Inhibited by GF
Authors : McGuire, J.R.; Bester, S.M.; Pegan, S.D.; Height, J.J.
Deposited on : 2020-05-06
Resolution : 2.31 Å(reported)

This is a Full wwPDB X-ray Structure Validation Report for a publicly released PDB entry.

We welcome your comments at validation@mail.wwpdb.org

A user guide is available at

<https://www.wwpdb.org/validation/2017/XrayValidationReportHelp>

with specific help available everywhere you see the ⓘ symbol.

The types of validation reports are described at

<http://www.wwpdb.org/validation/2017/FAQs#types>.

The following versions of software and data (see [references ⓘ](#)) were used in the production of this report:

MolProbity	:	4-5-2 with Phenix2.0
Mogul	:	2022.3.0, CSD as543be (2022)
Xtriage (Phenix)	:	2.0
EDS	:	3.0
Buster-report	:	wwPDB partial adaption of 1.1.7 (2018)
Percentile statistics	:	20250101.v01 (using entries in the PDB archive January 1st 2025)
CCP4	:	9.0.010 (Gargrove)
Density-Fitness	:	1.0.12
Ideal geometry (proteins)	:	Engh & Huber (2001)
Ideal geometry (DNA, RNA)	:	Parkinson et al. (1996)
Validation Pipeline (wwPDB-VP)	:	2.49

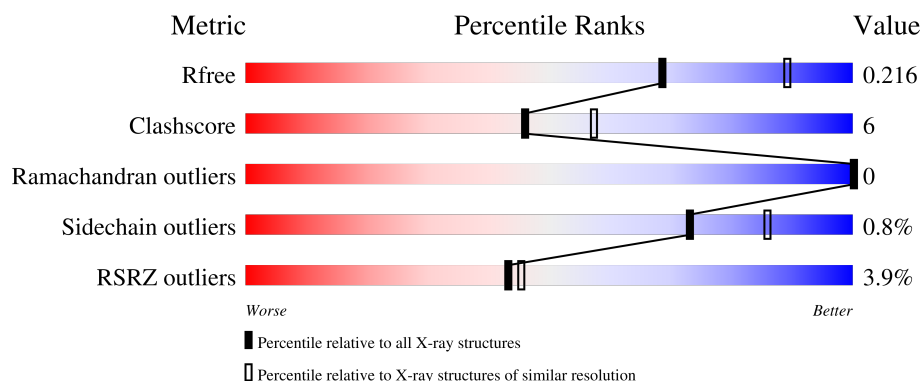
1 Overall quality at a glance

The following experimental techniques were used to determine the structure:

X-RAY DIFFRACTION

The reported resolution of this entry is 2.31 Å.

Percentile scores (ranging between 0-100) for global validation metrics of the entry are shown in the following graphic. The table shows the number of entries on which the scores are based.



Metric	Whole archive (#Entries)	Similar resolution (#Entries, resolution range(Å))
R_{free}	180053	6319 (2.30-2.30)
Clashscore	190562	6919 (2.30-2.30)
Ramachandran outliers	187476	6854 (2.30-2.30)
Sidechain outliers	187428	6854 (2.30-2.30)
RSRZ outliers	180081	6325 (2.30-2.30)

The table below summarises the geometric issues observed across the polymeric chains and their fit to the electron density. The red, orange, yellow and green segments of the lower bar indicate the fraction of residues that contain outliers for ≥ 3 , 2, 1 and 0 types of geometric quality criteria respectively. A grey segment represents the fraction of residues that are not modelled. The numeric value for each fraction is indicated below the corresponding segment, with a dot representing fractions $\leq 5\%$. The upper red bar (where present) indicates the fraction of residues that have poor fit to the electron density. The numeric value is given above the bar.

Mol	Chain	Length	Quality of chain
1	A	542	<div> <div>4%</div> <div>87%</div> <div>10%</div> <div>..</div> </div>
1	B	542	<div> <div>4%</div> <div>88%</div> <div>10%</div> <div>..</div> </div>
2	C	2	<div> <div>50%</div> <div>50%</div> </div>
3	D	3	<div> <div>33%</div> <div>67%</div> </div>

The following table lists non-polymeric compounds, carbohydrate monomers and non-standard

residues in protein, DNA, RNA chains that are outliers for geometric or electron-density-fit criteria:

Mol	Type	Chain	Res	Chirality	Geometry	Clashes	Electron density
5	WW2	B	602	-	-	X	-
6	7PE	B	603	-	-	X	-

2 Entry composition [i](#)

There are 7 unique types of molecules in this entry. The entry contains 9161 atoms, of which 0 are hydrogens and 0 are deuteriums.

In the tables below, the ZeroOcc column contains the number of atoms modelled with zero occupancy, the AltConf column contains the number of residues with at least one atom in alternate conformation and the Trace column contains the number of residues modelled with at most 2 atoms.

- Molecule 1 is a protein called Acetylcholinesterase.

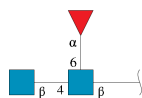
Mol	Chain	Residues	Atoms					ZeroOcc	AltConf	Trace
1	A	533	Total	C	N	O	S	0	0	0
			4143	2662	722	746	13			
1	B	533	Total	C	N	O	S	0	1	0
			4146	2663	722	748	13			

- Molecule 2 is an oligosaccharide called alpha-L-fucopyranose-(1-6)-2-acetamido-2-deoxy-beta-D-glucopyranose.



Mol	Chain	Residues	Atoms				ZeroOcc	AltConf	Trace
2	C	2	Total	C	N	O	0	0	0
			24	14	1	9			

- Molecule 3 is an oligosaccharide called 2-acetamido-2-deoxy-beta-D-glucopyranose-(1-4)-[alpha-L-fucopyranose-(1-6)]2-acetamido-2-deoxy-beta-D-glucopyranose.



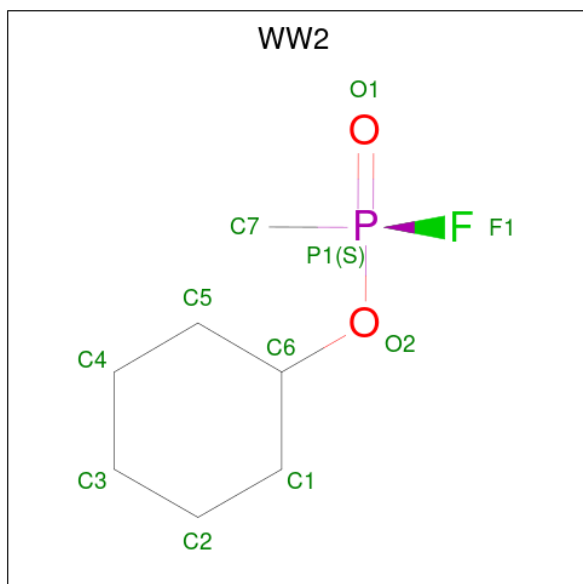
Mol	Chain	Residues	Atoms				ZeroOcc	AltConf	Trace
3	D	3	Total	C	N	O	0	0	0
			38	22	2	14			

- Molecule 4 is 2-acetamido-2-deoxy-beta-D-glucopyranose (CCD ID: NAG) (formula: C₈H₁₅NO₆).



Mol	Chain	Residues	Atoms				ZeroOcc	AltConf
4	A	1	Total	C	N	O	0	0
			14	8	1	5		
4	B	1	Total	C	N	O	0	0
			14	8	1	5		

- Molecule 5 is cyclohexyl (S)-methylphosphonofluoridoate (CCD ID: WW2) (formula: $C_7H_{14}FO_2P$) (labeled as "Ligand of Interest" by depositor).



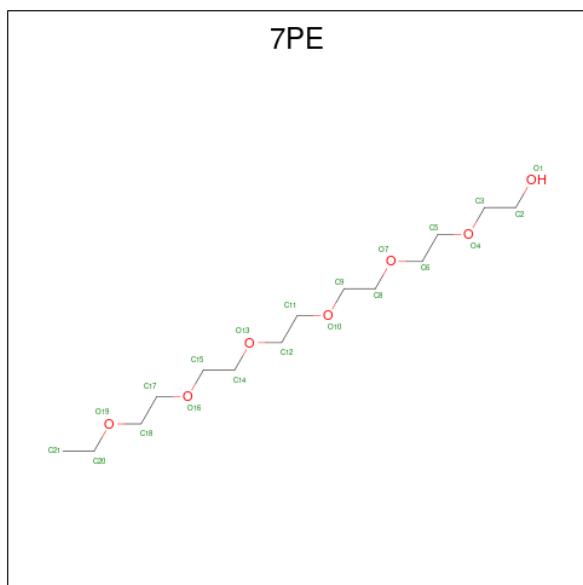
Mol	Chain	Residues	Atoms				ZeroOcc	AltConf
5	A	1	Total	C	O	P	0	0
			10	7	2	1		

Continued on next page...

Continued from previous page...

Mol	Chain	Residues	Atoms				ZeroOcc	AltConf
5	B	1	Total	C	O	P	0	0
			10	7	2	1		

- Molecule 6 is 2-(2-(2-(2-(2-ETHOXYETHOXY)ETHOXY)ETHOXY)ETHOXY)ETHOXY)ETHANOL (CCD ID: 7PE) (formula: C₁₄H₃₀O₇).



Mol	Chain	Residues	Atoms			ZeroOcc	AltConf
6	B	1	Total	C	O	0	0
			21	14	7		

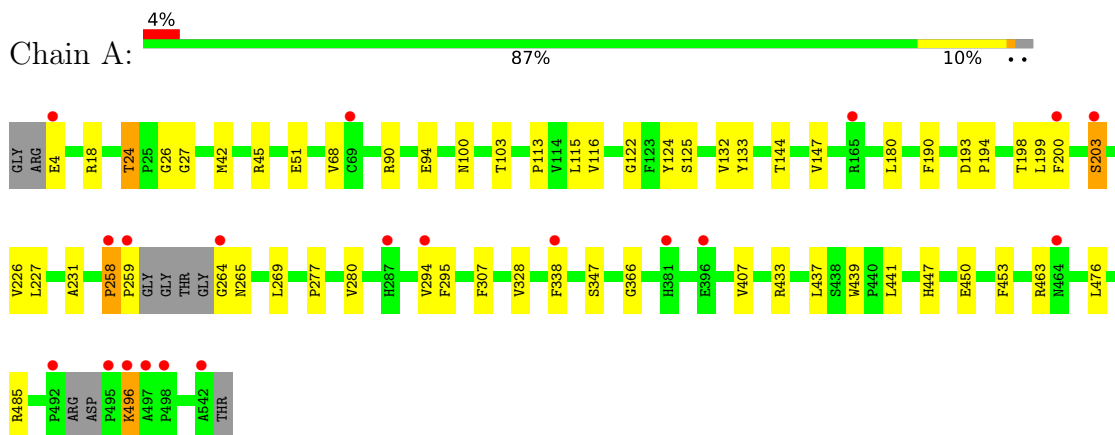
- Molecule 7 is water.

Mol	Chain	Residues	Atoms		ZeroOcc	AltConf
7	A	405	Total	O	0	0
			405	405		
7	B	336	Total	O	0	0
			336	336		

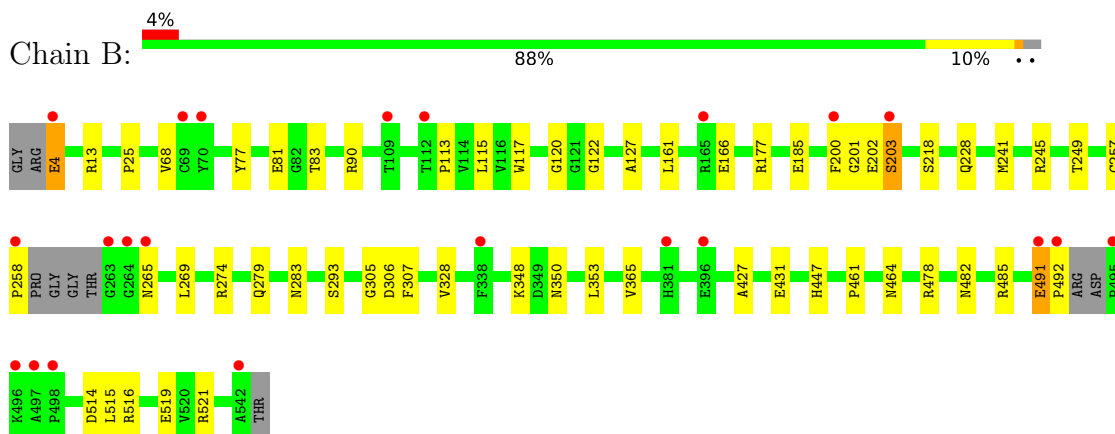
3 Residue-property plots [i](#)

These plots are drawn for all protein, RNA, DNA and oligosaccharide chains in the entry. The first graphic for a chain summarises the proportions of the various outlier classes displayed in the second graphic. The second graphic shows the sequence view annotated by issues in geometry and electron density. Residues are color-coded according to the number of geometric quality criteria for which they contain at least one outlier: green = 0, yellow = 1, orange = 2 and red = 3 or more. A red dot above a residue indicates a poor fit to the electron density ($RSRZ > 2$). Stretches of 2 or more consecutive residues without any outlier are shown as a green connector. Residues present in the sample, but not in the model, are shown in grey.

- Molecule 1: Acetylcholinesterase



- Molecule 1: Acetylcholinesterase



- Molecule 2: alpha-L-fucopyranose-(1-6)-2-acetamido-2-deoxy-beta-D-glucopyranose



- Molecule 3: 2-acetamido-2-deoxy-beta-D-glucopyranose-(1-4)-[alpha-L-fucopyranose-(1-6)]2-acetamido-2-deoxy-beta-D-glucopyranose

Chain D:

33%

67%



MAG1
MAG2
FUC3

4 Data and refinement statistics

Property	Value	Source
Space group	P 31 2 1	Depositor
Cell constants a, b, c, α , β , γ	104.69Å 104.69Å 323.80Å 90.00° 90.00° 120.00°	Depositor
Resolution (Å)	40.71 – 2.31 40.71 – 2.31	Depositor EDS
% Data completeness (in resolution range)	99.6 (40.71-2.31) 99.6 (40.71-2.31)	Depositor EDS
R_{merge}	0.08	Depositor
R_{sym}	(Not available)	Depositor
$\langle I/\sigma(I) \rangle$ ¹	3.83 (at 2.32Å)	Xtriage
Refinement program	PHENIX 1.9_1692	Depositor
R, R_{free}	0.178 , 0.211 0.188 , 0.216	Depositor DCC
R_{free} test set	4570 reflections (4.99%)	wwPDB-VP
Wilson B-factor (Å ²)	37.9	Xtriage
Anisotropy	0.472	Xtriage
Bulk solvent k_{sol} (e/Å ³), B_{sol} (Å ²)	0.31 , 43.1	EDS
L-test for twinning ²	$\langle L \rangle = 0.50$, $\langle L^2 \rangle = 0.34$	Xtriage
Estimated twinning fraction	0.015 for -h,-k,l	Xtriage
F_o, F_c correlation	0.96	EDS
Total number of atoms	9161	wwPDB-VP
Average B, all atoms (Å ²)	40.0	wwPDB-VP

Xtriage's analysis on translational NCS is as follows: *The largest off-origin peak in the Patterson function is 2.32% of the height of the origin peak. No significant pseudotranslation is detected.*

¹Intensities estimated from amplitudes.

²Theoretical values of $\langle |L| \rangle$, $\langle L^2 \rangle$ for acentric reflections are 0.5, 0.333 respectively for untwinned datasets, and 0.375, 0.2 for perfectly twinned datasets.

5 Model quality [i](#)

5.1 Standard geometry [i](#)

Bond lengths and bond angles in the following residue types are not validated in this section: WW2, NAG, FUC, 7PE

The Z score for a bond length (or angle) is the number of standard deviations the observed value is removed from the expected value. A bond length (or angle) with $|Z| > 5$ is considered an outlier worth inspection. RMSZ is the root-mean-square of all Z scores of the bond lengths (or angles).

Mol	Chain	Bond lengths		Bond angles	
		RMSZ	$\# Z > 5$	RMSZ	$\# Z > 5$
1	A	0.58	5/4270 (0.1%)	0.78	5/5836 (0.1%)
1	B	0.59	3/4275 (0.1%)	0.76	1/5841 (0.0%)
All	All	0.59	8/8545 (0.1%)	0.77	6/11677 (0.1%)

All (8) bond length outliers are listed below:

Mol	Chain	Res	Type	Atoms	Z	Observed(Å)	Ideal(Å)
1	A	231	ALA	C-O	-6.48	1.17	1.24
1	B	307	PHE	C-O	-6.14	1.17	1.24
1	A	407	VAL	C-O	-5.94	1.17	1.24
1	A	124	TYR	C-O	-5.76	1.16	1.24
1	A	307	PHE	C-O	-5.43	1.17	1.24
1	B	120	GLY	C-O	-5.37	1.18	1.23
1	B	201	GLY	C-O	-5.25	1.18	1.23
1	A	125	SER	C-O	-5.11	1.18	1.23

All (6) bond angle outliers are listed below:

Mol	Chain	Res	Type	Atoms	Z	Observed(°)	Ideal(°)
1	A	258	PRO	N-CA-C	10.10	123.03	110.70
1	A	450	GLU	N-CA-C	-6.35	105.85	113.97
1	A	496	LYS	N-CA-C	-5.82	106.22	113.38
1	B	203	SER	CB-CA-C	-5.33	110.45	116.63
1	A	203	SER	CB-CA-C	-5.30	110.48	116.63
1	A	407	VAL	N-CA-C	5.12	119.99	109.34

There are no chirality outliers.

There are no planarity outliers.

5.2 Too-close contacts ⓘ

In the following table, the Non-H and H(model) columns list the number of non-hydrogen atoms and hydrogen atoms in the chain respectively. The H(added) column lists the number of hydrogen atoms added and optimized by MolProbity. The Clashes column lists the number of clashes within the asymmetric unit, whereas Symm-Clashes lists symmetry-related clashes.

Mol	Chain	Non-H	H(model)	H(added)	Clashes	Symm-Clashes
1	A	4143	0	4024	38	0
1	B	4146	0	4026	48	0
2	C	24	0	21	1	0
3	D	38	0	33	5	0
4	A	14	0	13	0	0
4	B	14	0	13	5	0
5	A	10	0	11	5	0
5	B	10	0	11	12	0
6	B	21	0	30	11	0
7	A	405	0	0	3	1
7	B	336	0	0	4	1
All	All	9161	0	8182	97	1

The all-atom clashscore is defined as the number of clashes found per 1000 atoms (including hydrogen atoms). The all-atom clashscore for this structure is 6.

All (97) close contacts within the same asymmetric unit are listed below, sorted by their clash magnitude.

Atom-1	Atom-2	Interatomic distance (Å)	Clash overlap (Å)
1:B:203:SER:CB	5:B:602:WW2:H5	1.49	1.40
3:D:1:NAG:H61	3:D:2:NAG:H2	1.36	1.06
1:B:203:SER:CB	5:B:602:WW2:C5	2.35	1.05
1:B:203:SER:HB2	5:B:602:WW2:C5	1.90	1.01
1:A:122:GLY:N	5:A:602:WW2:O1	1.99	0.96
1:A:258:PRO:HB2	1:A:259:PRO:HD3	1.48	0.96
1:B:203:SER:HB2	5:B:602:WW2:H5	0.94	0.94
1:B:202:GLU:OE1	5:B:602:WW2:H4A	1.68	0.91
1:B:447:HIS:CD2	5:B:602:WW2:H6	2.06	0.90
1:B:202:GLU:OE1	5:B:602:WW2:C4	2.22	0.88
1:B:305:GLY:HA3	6:B:603:7PE:H141	1.55	0.86
1:B:350:ASN:OD1	3:D:1:NAG:N2	2.12	0.77
1:B:113:PRO:HG3	1:B:485:ARG:HG2	1.67	0.75
1:A:4:GLU:OE2	1:A:18:ARG:NH1	2.24	0.71
1:A:203:SER:HB2	5:A:602:WW2:H1A	1.72	0.70
1:A:259:PRO:HG2	1:A:269:LEU:HD12	1.74	0.69

Continued on next page...

Continued from previous page...

Atom-1	Atom-2	Interatomic distance (Å)	Clash overlap (Å)
1:B:241:MET:CE	6:B:603:7PE:H211	2.22	0.69
1:B:464:ASN:OD1	4:B:601:NAG:O7	2.11	0.68
3:D:1:NAG:H61	3:D:2:NAG:C2	2.21	0.67
6:B:603:7PE:H91	7:B:861:HOH:O	1.93	0.67
1:B:447:HIS:NE2	5:B:602:WW2:H6	2.11	0.66
1:B:306:ASP:HB2	6:B:603:7PE:H61	1.77	0.64
1:A:203:SER:CB	5:A:602:WW2:H1A	2.27	0.64
1:B:122:GLY:N	5:B:602:WW2:O1	2.31	0.64
6:B:603:7PE:H62	6:B:603:7PE:O10	1.98	0.63
1:B:68:VAL:HG23	1:B:90:ARG:HB2	1.82	0.61
1:B:478:ARG:NH1	1:B:491:GLU:OE2	2.30	0.61
1:A:24:THR:HG22	1:A:26:GLY:H	1.66	0.61
1:B:202:GLU:OE1	5:B:602:WW2:H4	2.00	0.61
1:A:347:SER:HB2	2:C:1:NAG:H62	1.82	0.61
1:B:161:LEU:HD11	1:B:269:LEU:HD22	1.83	0.60
1:A:45:ARG:HH21	1:A:51:GLU:HG3	1.67	0.59
1:A:265:ASN:ND2	7:A:707:HOH:O	2.35	0.58
1:A:103:THR:HG21	1:A:190:PHE:HB3	1.85	0.58
1:B:241:MET:HE2	6:B:603:7PE:H211	1.85	0.58
1:A:42:MET:HE3	1:A:94:GLU:HB2	1.85	0.58
1:A:180:LEU:HD21	1:A:199:LEU:HD21	1.85	0.58
1:B:166[A]:GLU:OE2	1:B:274:ARG:NH2	2.37	0.58
1:B:482:ASN:HD21	1:B:491:GLU:HG3	1.69	0.57
6:B:603:7PE:H112	7:B:861:HOH:O	2.04	0.57
3:D:1:NAG:O7	3:D:1:NAG:H3	2.05	0.57
1:A:264:GLY:N	7:A:710:HOH:O	2.36	0.57
1:B:464:ASN:OD1	4:B:601:NAG:C7	2.53	0.56
1:A:113:PRO:HG2	1:A:144:THR:HG22	1.87	0.56
1:B:447:HIS:HD2	5:B:602:WW2:H6	1.69	0.56
1:A:115:LEU:HB3	1:A:200:PHE:CE2	2.43	0.54
1:B:353:LEU:H	3:D:1:NAG:H83	1.72	0.54
1:A:463:ARG:NH1	7:A:705:HOH:O	2.34	0.54
1:B:115:LEU:HB3	1:B:200:PHE:CE2	2.43	0.53
1:A:122:GLY:CA	5:A:602:WW2:O1	2.57	0.52
6:B:603:7PE:O16	6:B:603:7PE:H213	2.10	0.52
1:B:431:GLU:OE1	1:B:521:ARG:NH1	2.41	0.52
1:B:203:SER:HB3	5:B:602:WW2:C5	2.35	0.52
1:B:241:MET:HE1	6:B:603:7PE:H211	1.92	0.52
1:A:113:PRO:HG3	1:A:485:ARG:HG2	1.93	0.50
1:B:514:ASP:OD1	1:B:515:LEU:N	2.38	0.50
1:A:433:ARG:NH2	1:A:439:TRP:O	2.44	0.49

Continued on next page...

Continued from previous page...

Atom-1	Atom-2	Interatomic distance (Å)	Clash overlap (Å)
4:B:601:NAG:H5	4:B:601:NAG:N2	2.27	0.49
1:B:482:ASN:ND2	1:B:491:GLU:HG3	2.27	0.49
1:A:258:PRO:HB2	1:A:259:PRO:CD	2.32	0.49
1:B:25:PRO:HG3	1:B:461:PRO:HD3	1.95	0.48
1:A:453:PHE:HB3	1:A:476:LEU:HD12	1.96	0.48
1:A:294:VAL:HG12	1:A:366:GLY:HA2	1.95	0.47
1:A:277:PRO:O	1:A:280:VAL:HG22	2.15	0.47
1:B:13:ARG:HD2	1:B:185:GLU:HB3	1.97	0.47
1:B:491:GLU:HG2	1:B:492:PRO:HD2	1.97	0.47
4:B:601:NAG:H5	4:B:601:NAG:HN2	1.79	0.47
1:B:117:TRP:HE3	1:B:200:PHE:CD1	2.32	0.46
1:B:4:GLU:N	7:B:708:HOH:O	2.48	0.46
1:A:68:VAL:HG23	1:A:90:ARG:HB2	1.98	0.46
1:B:306:ASP:HB2	6:B:603:7PE:C6	2.44	0.46
1:A:433:ARG:CZ	1:A:437:LEU:HD23	2.46	0.46
1:A:116:VAL:HB	1:A:199:LEU:HD23	1.97	0.45
1:A:294:VAL:HG22	1:A:338:PHE:HB3	2.00	0.44
1:B:202:GLU:HA	1:B:228:GLN:O	2.18	0.43
1:B:516:ARG:NH2	1:B:519:GLU:OE1	2.51	0.43
1:B:177:ARG:HD3	1:B:218:SER:OG	2.18	0.43
1:A:24:THR:HB	1:A:27:GLY:O	2.18	0.43
6:B:603:7PE:H172	6:B:603:7PE:H202	1.85	0.43
1:A:115:LEU:HD23	1:A:198:THR:HB	1.99	0.43
1:B:279:GLN:NE2	1:B:283:ASN:OD1	2.40	0.43
4:B:601:NAG:N2	4:B:601:NAG:C5	2.82	0.42
1:B:328:VAL:O	1:B:427:ALA:HA	2.19	0.42
1:B:245:ARG:O	1:B:249:THR:HG23	2.19	0.42
1:A:132:VAL:HG13	1:A:133:TYR:CD2	2.55	0.42
1:A:227:LEU:HB2	1:A:328:VAL:HG12	2.01	0.42
1:A:447:HIS:CD2	5:A:602:WW2:H1	2.55	0.42
1:B:68:VAL:HG13	1:B:127:ALA:HB2	2.01	0.42
1:B:265:ASN:OD1	7:B:701:HOH:O	2.21	0.42
1:A:200:PHE:CB	1:A:226:VAL:HB	2.50	0.41
1:A:100:ASN:O	1:A:147:VAL:HA	2.20	0.41
1:B:257:CYS:HA	1:B:258:PRO:HA	1.82	0.41
1:B:293:SER:HA	1:B:365:VAL:HG13	2.01	0.41
1:A:42:MET:HE2	1:A:42:MET:HB3	1.97	0.41
1:A:193:ASP:HA	1:A:194:PRO:HD2	1.95	0.41
1:B:77:TYR:CZ	1:B:348:LYS:HG2	2.56	0.41
1:A:496:LYS:HB2	1:A:496:LYS:HE3	1.76	0.41

All (1) symmetry-related close contacts are listed below. The label for Atom-2 includes the sym-

metry operator and encoded unit-cell translations to be applied.

Atom-1	Atom-2	Interatomic distance (Å)	Clash overlap (Å)
7:A:1008:HOH:O	7:B:803:HOH:O[1_455]	0.26	1.94

5.3 Torsion angles [i](#)

5.3.1 Protein backbone [i](#)

In the following table, the Percentiles column shows the percent Ramachandran outliers of the chain as a percentile score with respect to all X-ray entries followed by that with respect to entries of similar resolution.

The Analysed column shows the number of residues for which the backbone conformation was analysed, and the total number of residues.

Mol	Chain	Analysed	Favoured	Allowed	Outliers	Percentiles	
1	A	527/542 (97%)	511 (97%)	16 (3%)	0	100	100
1	B	528/542 (97%)	513 (97%)	15 (3%)	0	100	100
All	All	1055/1084 (97%)	1024 (97%)	31 (3%)	0	100	100

There are no Ramachandran outliers to report.

5.3.2 Protein sidechains [i](#)

In the following table, the Percentiles column shows the percent sidechain outliers of the chain as a percentile score with respect to all X-ray entries followed by that with respect to entries of similar resolution.

The Analysed column shows the number of residues for which the sidechain conformation was analysed, and the total number of residues.

Mol	Chain	Analysed	Rotameric	Outliers	Percentiles	
1	A	432/437 (99%)	429 (99%)	3 (1%)	76	87
1	B	432/437 (99%)	428 (99%)	4 (1%)	70	84
All	All	864/874 (99%)	857 (99%)	7 (1%)	73	86

All (7) residues with a non-rotameric sidechain are listed below:

Mol	Chain	Res	Type
1	A	24	THR

Continued on next page...

Continued from previous page...

Mol	Chain	Res	Type
1	A	295	PHE
1	A	441	LEU
1	B	4	GLU
1	B	81	GLU
1	B	83	THR
1	B	491	GLU

Sometimes sidechains can be flipped to improve hydrogen bonding and reduce clashes. All (11) such sidechains are listed below:

Mol	Chain	Res	Type
1	A	279	GLN
1	A	421	GLN
1	A	508	GLN
1	B	184	GLN
1	B	265	ASN
1	B	287	HIS
1	B	325	GLN
1	B	369	GLN
1	B	381	HIS
1	B	413	GLN
1	B	474	GLN

5.3.3 RNA ⓘ

There are no RNA molecules in this entry.

5.4 Non-standard residues in protein, DNA, RNA chains ⓘ

There are no non-standard protein/DNA/RNA residues in this entry.

5.5 Carbohydrates ⓘ

5 monosaccharides are modelled in this entry.

In the following table, the Counts columns list the number of bonds (or angles) for which Mogul statistics could be retrieved, the number of bonds (or angles) that are observed in the model and the number of bonds (or angles) that are defined in the Chemical Component Dictionary. The Link column lists molecule types, if any, to which the group is linked. The Z score for a bond length (or angle) is the number of standard deviations the observed value is removed from the

expected value. A bond length (or angle) with $|Z| > 2$ is considered an outlier worth inspection. RMSZ is the root-mean-square of all Z scores of the bond lengths (or angles).

Mol	Type	Chain	Res	Link	Bond lengths			Bond angles		
					Counts	RMSZ	$\# Z > 2$	Counts	RMSZ	$\# Z > 2$
2	NAG	C	1	2	14,14,15	1.04	0	17,19,21	1.67	4 (23%)
2	FUC	C	2	2	10,10,11	0.72	0	14,14,16	1.48	3 (21%)
3	NAG	D	1	3	14,14,15	0.77	0	17,19,21	1.90	4 (23%)
3	NAG	D	2	3	14,14,15	0.47	0	17,19,21	2.19	5 (29%)
3	FUC	D	3	3	10,10,11	0.27	0	14,14,16	0.59	0

In the following table, the Chirals column lists the number of chiral outliers, the number of chiral centers analysed, the number of these observed in the model and the number defined in the Chemical Component Dictionary. Similar counts are reported in the Torsion and Rings columns. '-' means no outliers of that kind were identified.

Mol	Type	Chain	Res	Link	Chirals	Torsions	Rings
2	NAG	C	1	2	-	2/6/23/26	0/1/1/1
2	FUC	C	2	2	-	-	0/1/1/1
3	NAG	D	1	3	-	5/6/23/26	0/1/1/1
3	NAG	D	2	3	-	4/6/23/26	0/1/1/1
3	FUC	D	3	3	-	-	0/1/1/1

There are no bond length outliers.

All (16) bond angle outliers are listed below:

Mol	Chain	Res	Type	Atoms	Z	Observed(°)	Ideal(°)
3	D	1	NAG	C1-O5-C5	5.03	118.93	112.19
3	D	2	NAG	C1-C2-N2	5.00	118.32	110.43
3	D	2	NAG	O5-C1-C2	-4.82	103.84	111.29
2	C	1	NAG	O4-C4-C3	-3.76	101.50	110.38
3	D	1	NAG	C1-C2-N2	-3.69	104.61	110.43
2	C	2	FUC	C2-C3-C4	-2.92	105.73	110.86
2	C	1	NAG	O5-C1-C2	-2.91	106.79	111.29
2	C	1	NAG	C2-N2-C7	-2.87	119.06	122.90
3	D	2	NAG	C4-C3-C2	-2.82	106.89	111.02
3	D	2	NAG	C3-C4-C5	-2.73	105.28	110.23
3	D	1	NAG	O3-C3-C2	-2.60	104.00	109.40
3	D	1	NAG	C4-C3-C2	2.46	114.62	111.02
2	C	2	FUC	C1-C2-C3	-2.31	106.28	109.64
2	C	2	FUC	C3-C4-C5	-2.19	106.48	109.81
3	D	2	NAG	C1-O5-C5	2.17	115.09	112.19
2	C	1	NAG	O3-C3-C4	-2.08	105.47	110.38

There are no chirality outliers.

All (11) torsion outliers are listed below:

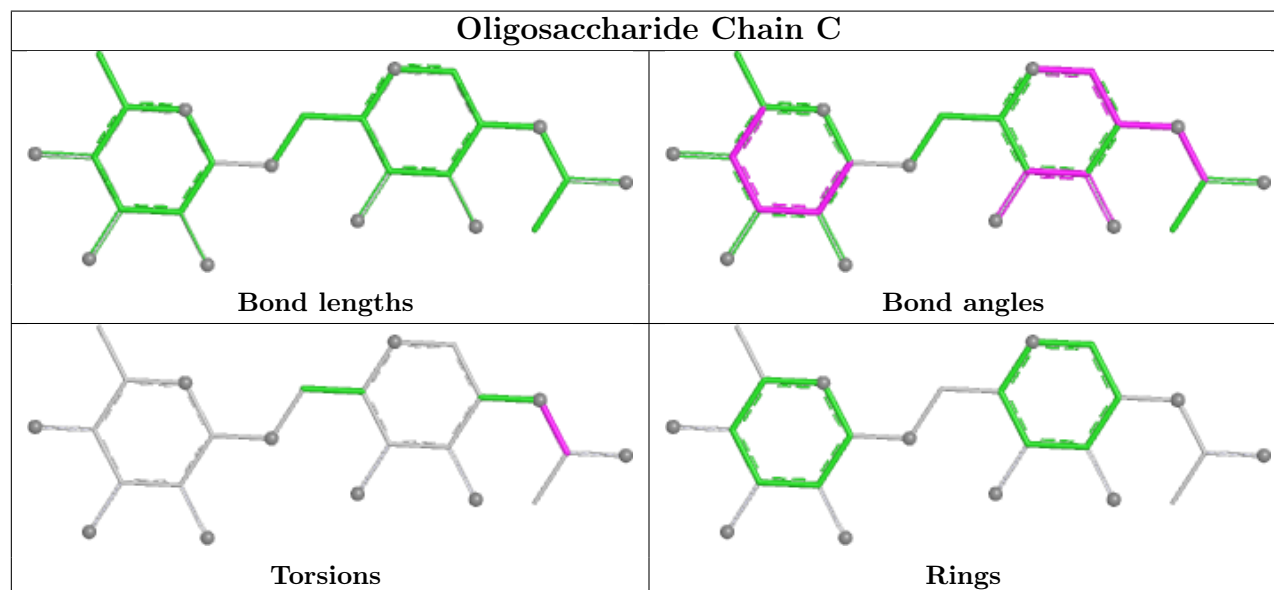
Mol	Chain	Res	Type	Atoms
3	D	1	NAG	C3-C2-N2-C7
3	D	1	NAG	C8-C7-N2-C2
3	D	1	NAG	O7-C7-N2-C2
3	D	2	NAG	C8-C7-N2-C2
3	D	2	NAG	O7-C7-N2-C2
3	D	1	NAG	O5-C5-C6-O6
3	D	1	NAG	C4-C5-C6-O6
2	C	1	NAG	C8-C7-N2-C2
2	C	1	NAG	O7-C7-N2-C2
3	D	2	NAG	C1-C2-N2-C7
3	D	2	NAG	C3-C2-N2-C7

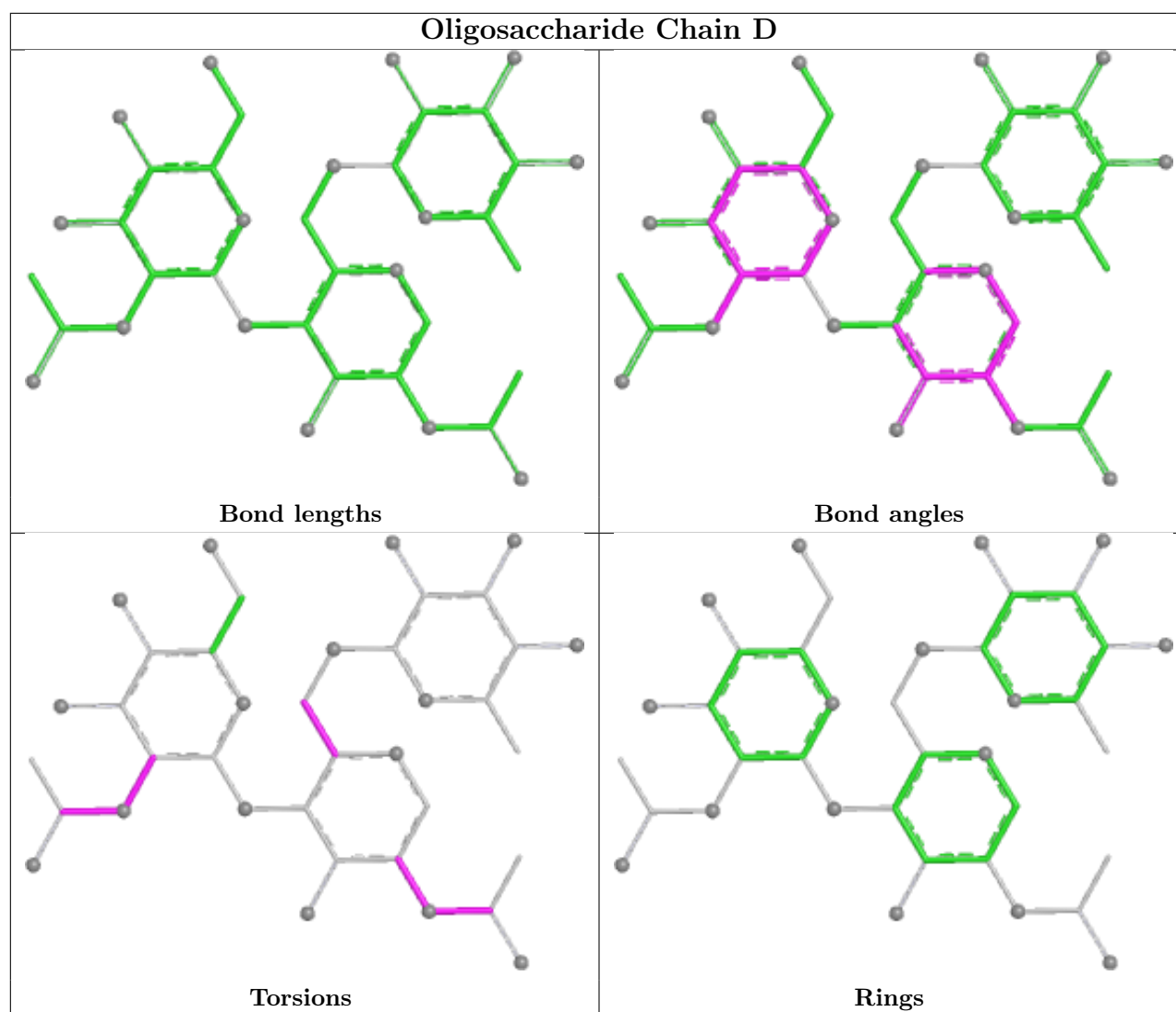
There are no ring outliers.

3 monomers are involved in 6 short contacts:

Mol	Chain	Res	Type	Clashes	Symm-Clashes
3	D	1	NAG	5	0
3	D	2	NAG	2	0
2	C	1	NAG	1	0

The following is a two-dimensional graphical depiction of Mogul quality analysis of bond lengths, bond angles, torsion angles, and ring geometry for oligosaccharide.





5.6 Ligand geometry [i](#)

5 ligands are modelled in this entry.

In the following table, the Counts columns list the number of bonds (or angles) for which Mogul statistics could be retrieved, the number of bonds (or angles) that are observed in the model and the number of bonds (or angles) that are defined in the Chemical Component Dictionary. The Link column lists molecule types, if any, to which the group is linked. The Z score for a bond length (or angle) is the number of standard deviations the observed value is removed from the expected value. A bond length (or angle) with $|Z| > 2$ is considered an outlier worth inspection. RMSZ is the root-mean-square of all Z scores of the bond lengths (or angles).

Mol	Type	Chain	Res	Link	Bond lengths			Bond angles		
					Counts	RMSZ	$\# Z > 2$	Counts	RMSZ	$\# Z > 2$
5	WW2	A	602	1	7,10,11	0.82	0	8,12,15	0.36	0
6	7PE	B	603	-	20,20,20	0.66	0	19,19,19	0.34	0
4	NAG	A	601	-	14,14,15	0.71	0	17,19,21	1.76	5 (29%)

Mol	Type	Chain	Res	Link	Bond lengths			Bond angles		
					Counts	RMSZ	# Z > 2	Counts	RMSZ	# Z > 2
5	WW2	B	602	1	7,10,11	0.81	0	8,12,15	0.34	0
4	NAG	B	601	-	14,14,15	0.29	0	17,19,21	0.69	0

In the following table, the Chirals column lists the number of chiral outliers, the number of chiral centers analysed, the number of these observed in the model and the number defined in the Chemical Component Dictionary. Similar counts are reported in the Torsion and Rings columns. '-' means no outliers of that kind were identified.

Mol	Type	Chain	Res	Link	Chirals	Torsions	Rings
5	WW2	A	602	1	-	1/2/12/13	0/1/1/1
6	7PE	B	603	-	-	11/18/18/18	-
4	NAG	A	601	-	-	4/6/23/26	0/1/1/1
5	WW2	B	602	1	-	1/2/12/13	0/1/1/1
4	NAG	B	601	-	-	2/6/23/26	0/1/1/1

There are no bond length outliers.

All (5) bond angle outliers are listed below:

Mol	Chain	Res	Type	Atoms	Z	Observed(°)	Ideal(°)
4	A	601	NAG	C2-N2-C7	-4.25	117.21	122.90
4	A	601	NAG	C3-C4-C5	-3.19	104.44	110.23
4	A	601	NAG	O5-C5-C6	2.58	112.68	107.66
4	A	601	NAG	O5-C1-C2	-2.49	107.44	111.29
4	A	601	NAG	C4-C3-C2	-2.16	107.85	111.02

There are no chirality outliers.

All (19) torsion outliers are listed below:

Mol	Chain	Res	Type	Atoms
5	A	602	WW2	C5-C6-O2-P1
6	B	603	7PE	C17-C18-O19-C20
6	B	603	7PE	C11-C12-O13-C14
6	B	603	7PE	O10-C11-C12-O13
6	B	603	7PE	O4-C5-C6-O7
4	B	601	NAG	C8-C7-N2-C2
4	B	601	NAG	O7-C7-N2-C2
6	B	603	7PE	O13-C14-C15-O16
4	A	601	NAG	C4-C5-C6-O6
6	B	603	7PE	O1-C2-C3-O4
4	A	601	NAG	O5-C5-C6-O6

Continued on next page...

Continued from previous page...

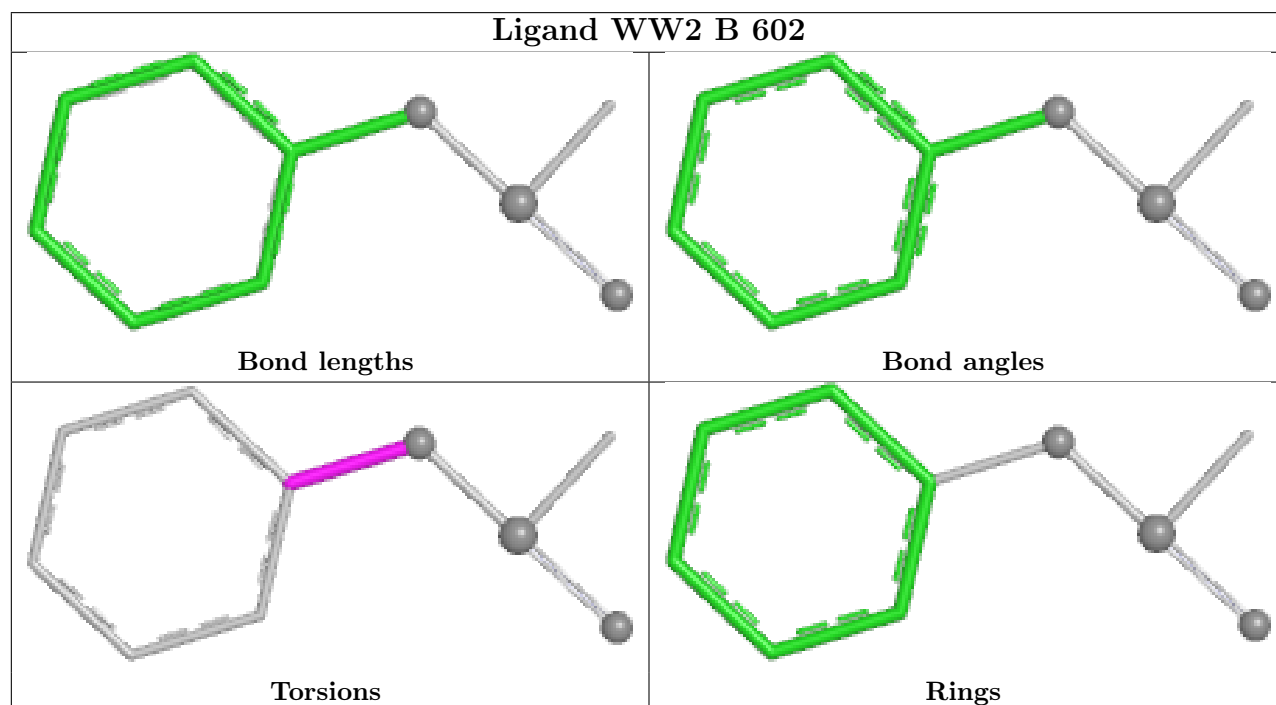
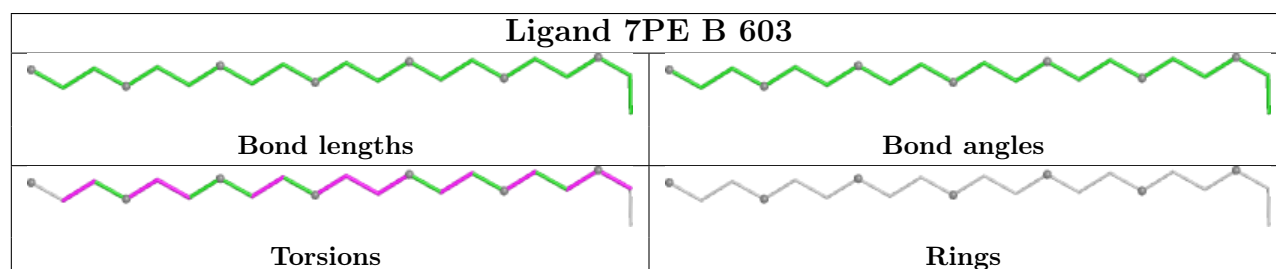
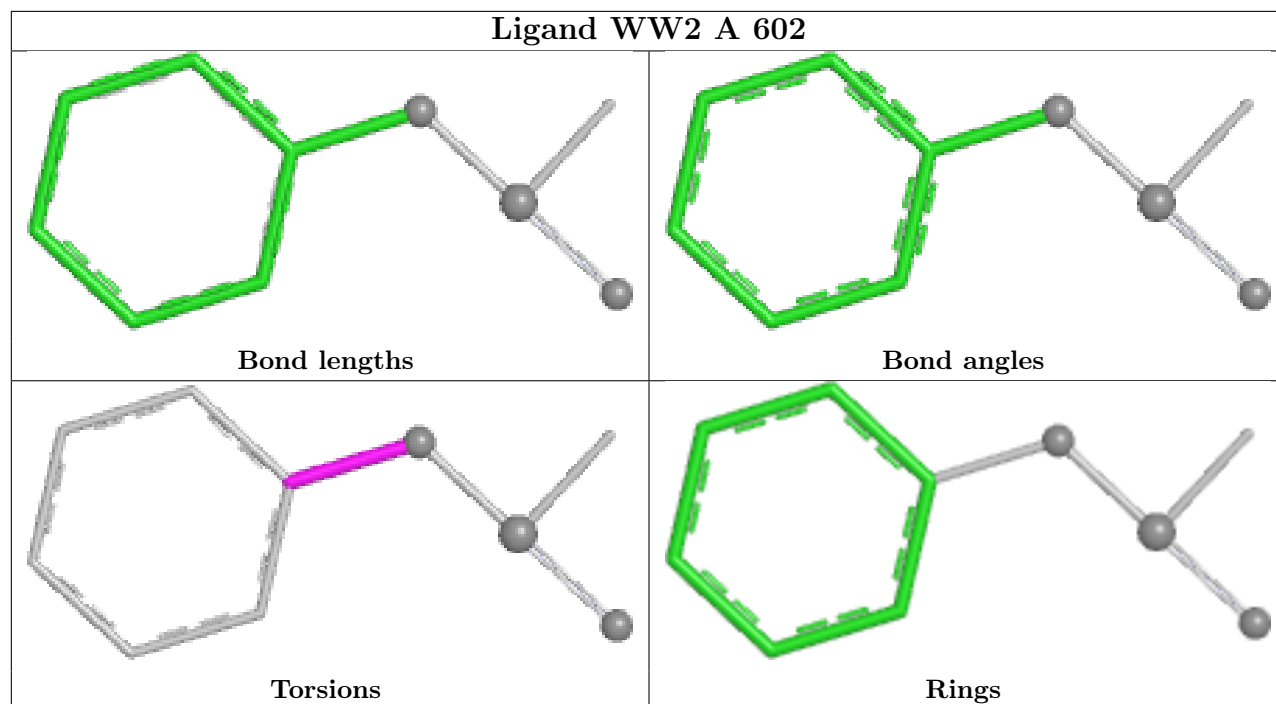
Mol	Chain	Res	Type	Atoms
6	B	603	7PE	C18-C17-O16-C15
5	B	602	WW2	C1-C6-O2-P1
4	A	601	NAG	C8-C7-N2-C2
6	B	603	7PE	C6-C5-O4-C3
6	B	603	7PE	C12-C11-O10-C9
6	B	603	7PE	C21-C20-O19-C18
6	B	603	7PE	O7-C8-C9-O10
4	A	601	NAG	O7-C7-N2-C2

There are no ring outliers.

4 monomers are involved in 33 short contacts:

Mol	Chain	Res	Type	Clashes	Symm-Clashes
5	A	602	WW2	5	0
6	B	603	7PE	11	0
5	B	602	WW2	12	0
4	B	601	NAG	5	0

The following is a two-dimensional graphical depiction of Mogul quality analysis of bond lengths, bond angles, torsion angles, and ring geometry for all instances of the Ligand of Interest. In addition, ligands with molecular weight > 250 and outliers as shown on the validation Tables will also be included. For torsion angles, if less than 5% of the Mogul distribution of torsion angles is within 10 degrees of the torsion angle in question, then that torsion angle is considered an outlier. Any bond that is central to one or more torsion angles identified as an outlier by Mogul will be highlighted in the graph. For rings, the root-mean-square deviation (RMSD) between the ring in question and similar rings identified by Mogul is calculated over all ring torsion angles. If the average RMSD is greater than 60 degrees and the minimal RMSD between the ring in question and any Mogul-identified rings is also greater than 60 degrees, then that ring is considered an outlier. The outliers are highlighted in purple. The color gray indicates Mogul did not find sufficient equivalents in the CSD to analyse the geometry.



5.7 Other polymers [i](#)

There are no such residues in this entry.

5.8 Polymer linkage issues [i](#)

There are no chain breaks in this entry.

6 Fit of model and data

6.1 Protein, DNA and RNA chains

In the following table, the column labelled ‘#RSRZ> 2’ contains the number (and percentage) of RSRZ outliers, followed by percent RSRZ outliers for the chain as percentile scores relative to all X-ray entries and entries of similar resolution. The OWAB column contains the minimum, median, 95th percentile and maximum values of the occupancy-weighted average B-factor per residue. The column labelled ‘Q< 0.9’ lists the number of (and percentage) of residues with an average occupancy less than 0.9.

Mol	Chain	Analysed	<RSRZ>	#RSRZ>2	OWAB(Å ²)	Q<0.9
1	A	533/542 (98%)	-0.07	20 (3%) 44 46	21, 34, 59, 116	0
1	B	533/542 (98%)	0.03	22 (4%) 41 43	21, 36, 63, 135	1 (0%)
All	All	1066/1084 (98%)	-0.02	42 (3%) 43 45	21, 35, 62, 135	1 (0%)

All (42) RSRZ outliers are listed below:

Mol	Chain	Res	Type	RSRZ
1	A	492	PRO	8.3
1	B	495	PRO	7.5
1	A	259	PRO	7.3
1	A	264	GLY	7.0
1	B	492	PRO	6.2
1	B	263	GLY	5.6
1	A	495	PRO	5.4
1	B	496	LYS	5.2
1	B	258	PRO	5.2
1	B	497	ALA	5.1
1	B	70	TYR	4.9
1	B	542	ALA	4.7
1	A	497	ALA	4.3
1	A	542	ALA	4.0
1	B	4	GLU	3.9
1	B	200	PHE	3.7
1	B	264	GLY	3.5
1	A	496	LYS	3.4
1	B	381	HIS	3.4
1	B	165	ARG	3.2
1	A	338	PHE	3.0
1	A	203	SER	3.0
1	B	491	GLU	2.9
1	A	69	CYS	2.9

Continued on next page...

Continued from previous page...

Mol	Chain	Res	Type	RSRZ
1	A	381	HIS	2.8
1	A	287	HIS	2.7
1	B	498	PRO	2.7
1	A	258	PRO	2.7
1	B	265	ASN	2.6
1	A	498	PRO	2.6
1	A	4	GLU	2.5
1	A	396	GLU	2.5
1	B	203	SER	2.4
1	B	396	GLU	2.4
1	B	112	THR	2.3
1	A	200	PHE	2.2
1	A	464	ASN	2.2
1	B	69	CYS	2.2
1	A	294	VAL	2.2
1	A	165	ARG	2.2
1	B	109	THR	2.2
1	B	338	PHE	2.2

6.2 Non-standard residues in protein, DNA, RNA chains [i](#)

There are no non-standard protein/DNA/RNA residues in this entry.

6.3 Carbohydrates [i](#)

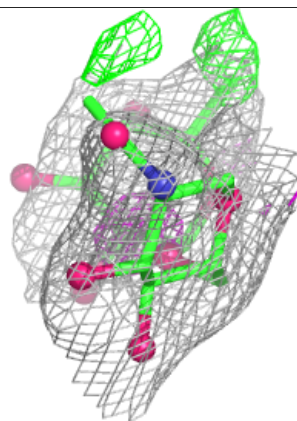
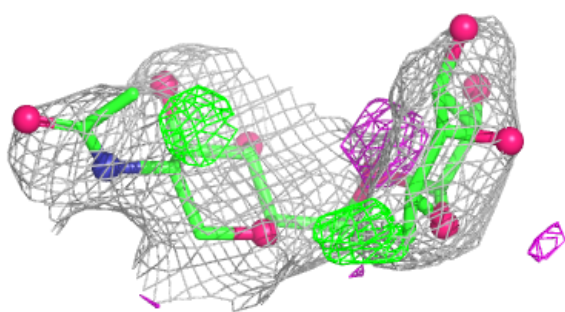
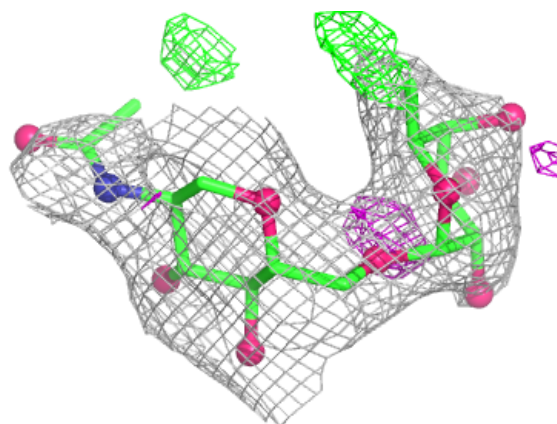
In the following table, the Atoms column lists the number of modelled atoms in the group and the number defined in the chemical component dictionary. The B-factors column lists the minimum, median, 95th percentile and maximum values of B factors of atoms in the group. The column labelled 'Q< 0.9' lists the number of atoms with occupancy less than 0.9.

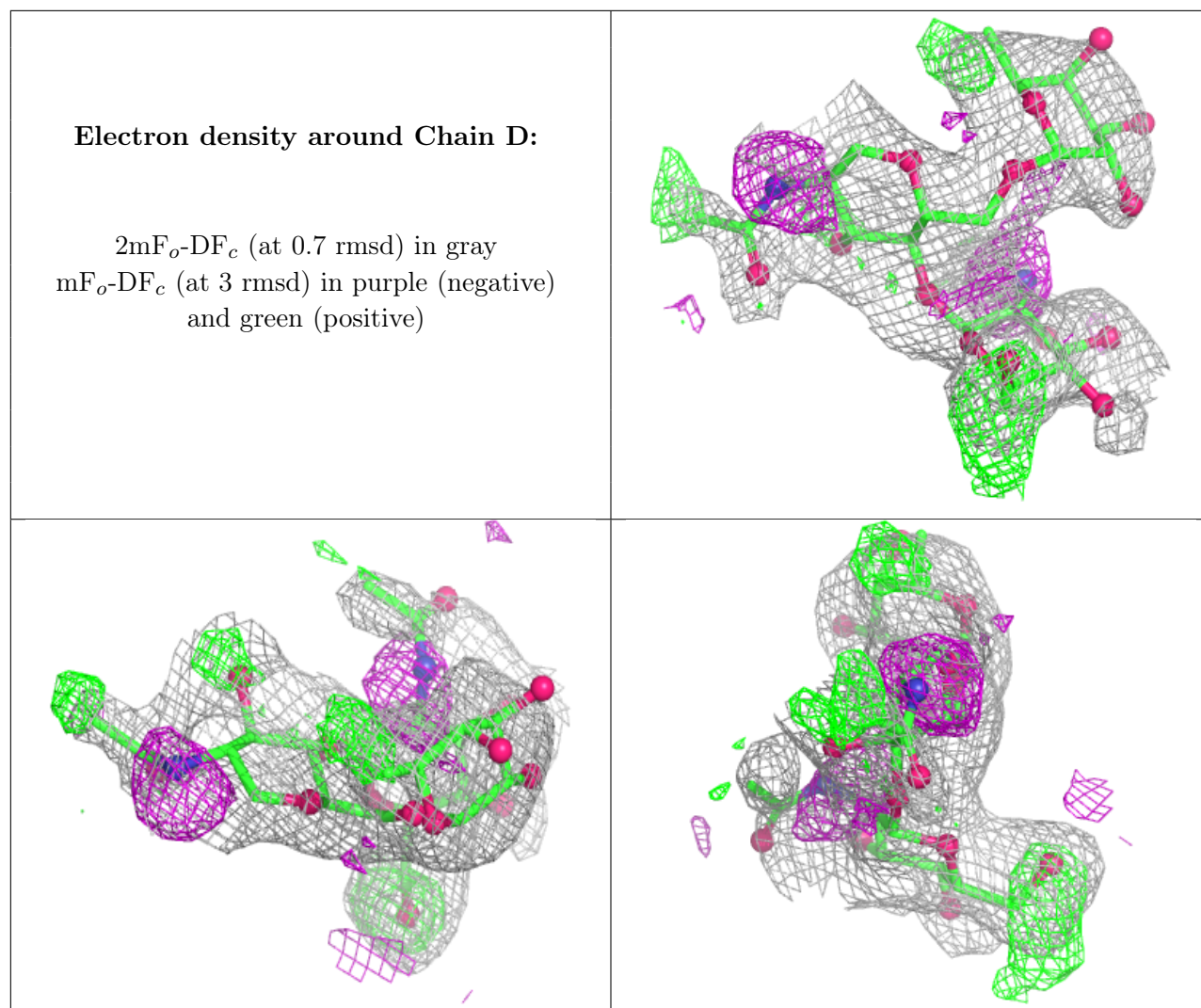
Mol	Type	Chain	Res	Atoms	RSCC	RSR	B-factors(\AA^2)	Q<0.9
3	NAG	D	2	14/15	0.38	0.25	99,111,116,117	0
3	NAG	D	1	14/15	0.67	0.25	104,122,126,128	0
2	FUC	C	2	10/11	0.67	0.20	110,112,117,119	0
3	FUC	D	3	10/11	0.67	0.19	98,104,106,109	0
2	NAG	C	1	14/15	0.78	0.17	74,90,119,124	0

The following is a graphical depiction of the model fit to experimental electron density for oligosaccharide. Each fit is shown from different orientation to approximate a three-dimensional view.

Electron density around Chain C:

$2mF_o-DF_c$ (at 0.7 rmsd) in gray
 mF_o-DF_c (at 3 rmsd) in purple (negative)
and green (positive)





6.4 Ligands ⓘ

In the following table, the Atoms column lists the number of modelled atoms in the group and the number defined in the chemical component dictionary. The B-factors column lists the minimum, median, 95th percentile and maximum values of B factors of atoms in the group. The column labelled 'Q< 0.9' lists the number of atoms with occupancy less than 0.9.

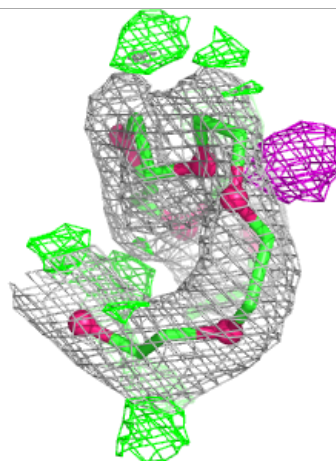
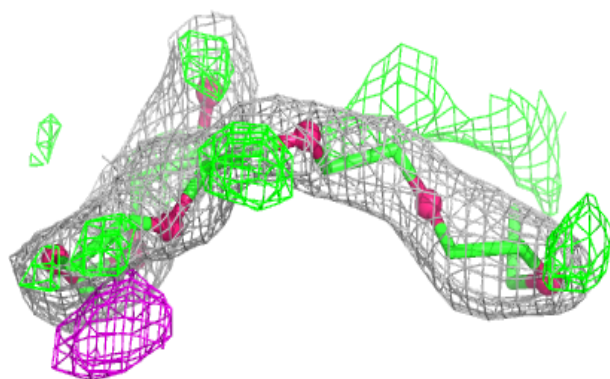
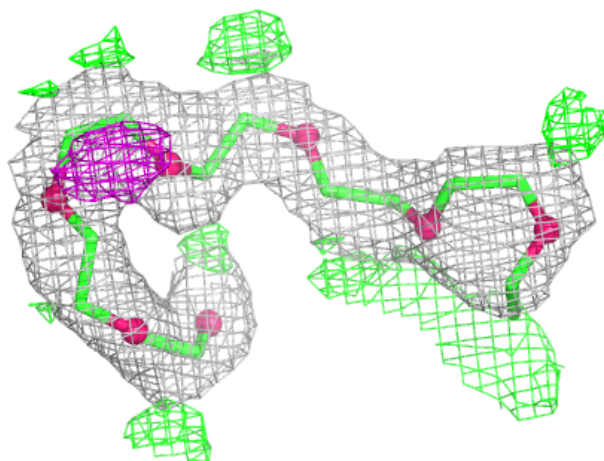
Mol	Type	Chain	Res	Atoms	RSCC	RSR	B-factors(Å ²)	Q<0.9
4	NAG	B	601	14/15	0.28	0.29	117,124,130,131	0
6	7PE	B	603	21/21	0.74	0.28	66,88,96,97	0
4	NAG	A	601	14/15	0.76	0.19	117,125,128,128	0
5	WW2	B	602	10/11	0.85	0.26	27,58,61,64	0
5	WW2	A	602	10/11	0.87	0.21	32,53,59,61	0

The following is a graphical depiction of the model fit to experimental electron density of all instances of the Ligand of Interest. In addition, ligands with molecular weight > 250 and outliers as shown on the geometry validation Tables will also be included. Each fit is shown from different

orientation to approximate a three-dimensional view.

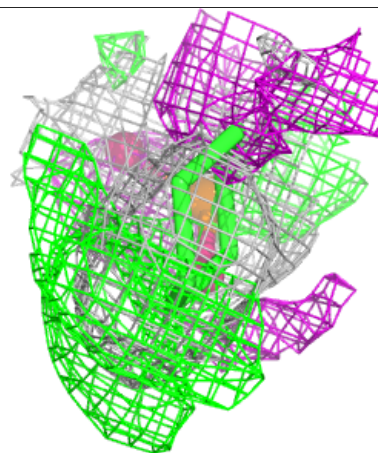
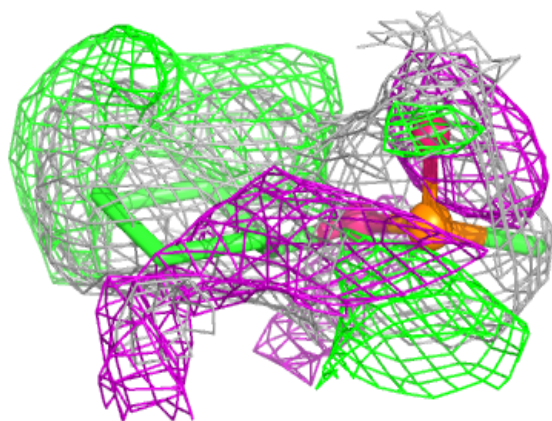
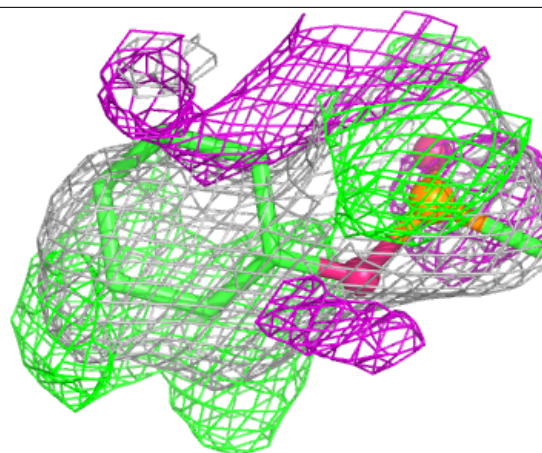
Electron density around 7PE B 603:

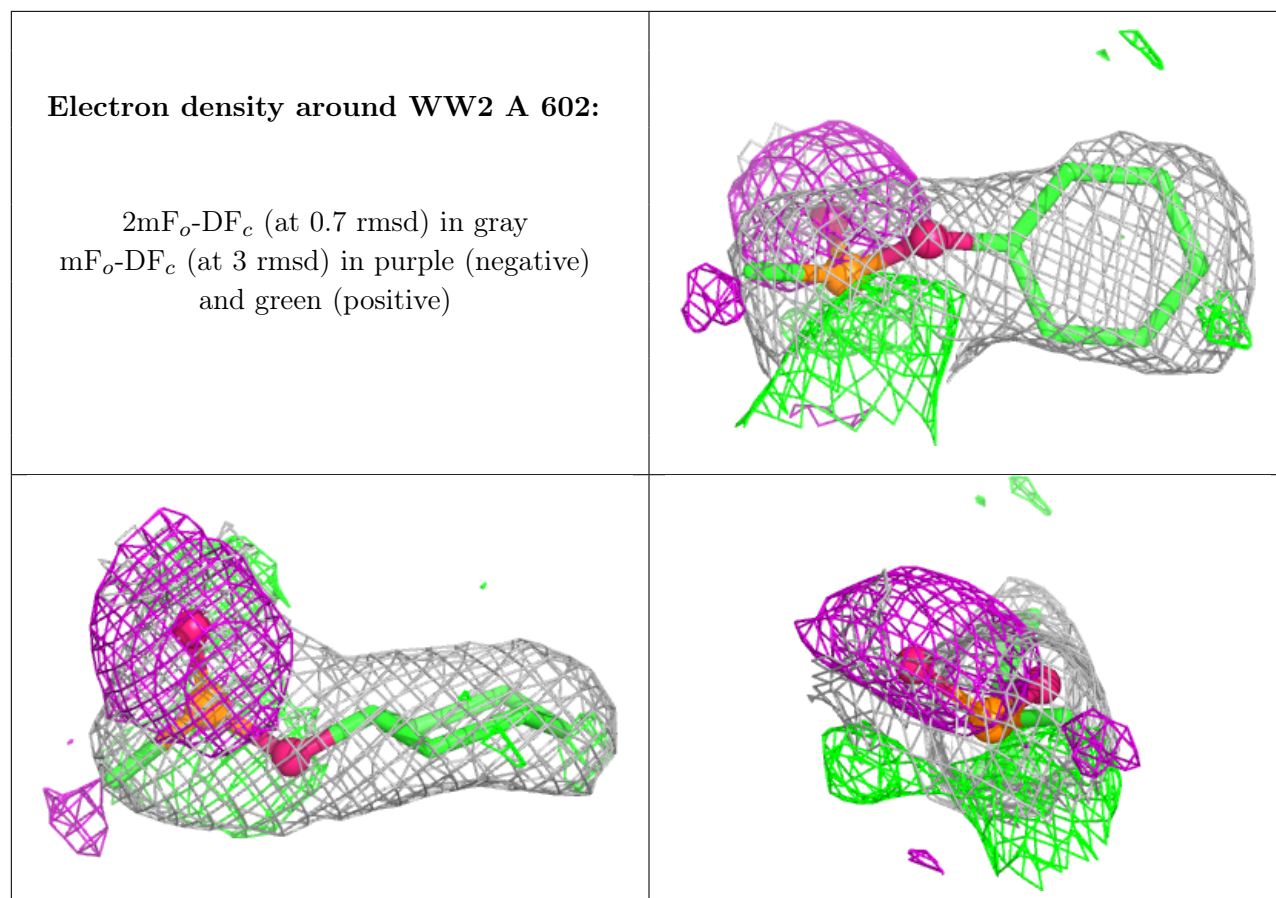
$2mF_o-DF_c$ (at 0.7 rmsd) in gray
 mF_o-DF_c (at 3 rmsd) in purple (negative)
and green (positive)



Electron density around WW2 B 602:

$2mF_o-DF_c$ (at 0.7 rmsd) in gray
 mF_o-DF_c (at 3 rmsd) in purple (negative)
and green (positive)





6.5 Other polymers ⓘ

There are no such residues in this entry.