



Full wwPDB X-ray Structure Validation Report ⓘ

Mar 5, 2026 – 09:22 AM UTC

PDB ID : 7B56 / pdb_00007b56
Title : Crystal structure of CaMKII-actinin complex bound to AMPPNP
Authors : Zhu, J.; Gold, M.
Deposited on : 2020-12-03
Resolution : 1.45 Å(reported)

This is a Full wwPDB X-ray Structure Validation Report for a publicly released PDB entry.

We welcome your comments at validation@mail.wwpdb.org

A user guide is available at

<https://www.wwpdb.org/validation/2017/XrayValidationReportHelp>

with specific help available everywhere you see the ⓘ symbol.

The types of validation reports are described at

<http://www.wwpdb.org/validation/2017/FAQs#types>.

The following versions of software and data (see [references ⓘ](#)) were used in the production of this report:

MolProbity	:	4-5-2 with Phenix2.0
Mogul	:	2022.3.0, CSD as543be (2022)
Xtriage (Phenix)	:	2.0
EDS	:	3.0
Buster-report	:	wwPDB partial adaption of 1.1.7 (2018)
Percentile statistics	:	20250101.v01 (using entries in the PDB archive January 1st 2025)
CCP4	:	9.0.010 (Gargrove)
Density-Fitness	:	1.0.12
Ideal geometry (proteins)	:	Engh & Huber (2001)
Ideal geometry (DNA, RNA)	:	Parkinson et al. (1996)
Validation Pipeline (wwPDB-VP)	:	2.49

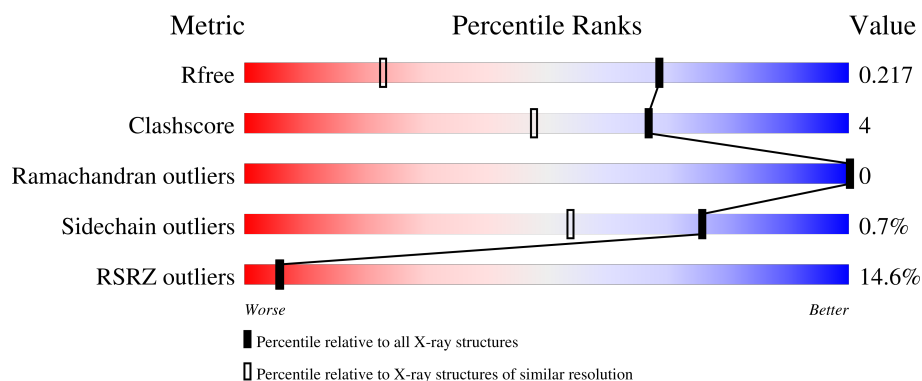
1 Overall quality at a glance

The following experimental techniques were used to determine the structure:

X-RAY DIFFRACTION

The reported resolution of this entry is 1.45 Å.

Percentile scores (ranging between 0-100) for global validation metrics of the entry are shown in the following graphic. The table shows the number of entries on which the scores are based.



Metric	Whole archive (#Entries)	Similar resolution (#Entries, resolution range(Å))
R_{free}	180053	1756 (1.46-1.46)
Clashscore	190562	1795 (1.46-1.46)
Ramachandran outliers	187476	1776 (1.46-1.46)
Sidechain outliers	187428	1776 (1.46-1.46)
RSRZ outliers	180081	1756 (1.46-1.46)

The table below summarises the geometric issues observed across the polymeric chains and their fit to the electron density. The red, orange, yellow and green segments of the lower bar indicate the fraction of residues that contain outliers for ≥ 3 , 2, 1 and 0 types of geometric quality criteria respectively. A grey segment represents the fraction of residues that are not modelled. The numeric value for each fraction is indicated below the corresponding segment, with a dot representing fractions $\leq 5\%$. The upper red bar (where present) indicates the fraction of residues that have poor fit to the electron density. The numeric value is given above the bar.

Mol	Chain	Length	Quality of chain
1	B	317	<div> <div>7%</div> <div>91%</div> <div>• •</div> </div>
2	A	73	<div> <div>44%</div> <div>79%</div> <div>14%</div> <div>7%</div> </div>

2 Entry composition

There are 6 unique types of molecules in this entry. The entry contains 3416 atoms, of which 0 are hydrogens and 0 are deuteriums.

In the tables below, the ZeroOcc column contains the number of atoms modelled with zero occupancy, the AltConf column contains the number of residues with at least one atom in alternate conformation and the Trace column contains the number of residues modelled with at most 2 atoms.

- Molecule 1 is a protein called Calcium/calmodulin-dependent protein kinase type II subunit alpha.

Mol	Chain	Residues	Atoms					ZeroOcc	AltConf	Trace
1	B	303	Total	C	N	O	S	0	4	0
			2416	1545	425	432	14			

There are 4 discrepancies between the modelled and reference sequences:

Chain	Residue	Modelled	Actual	Comment	Reference
B	-1	SER	-	expression tag	UNP P11798
B	0	MET	-	expression tag	UNP P11798
B	305	ALA	THR	engineered mutation	UNP P11798
B	306	ALA	THR	engineered mutation	UNP P11798

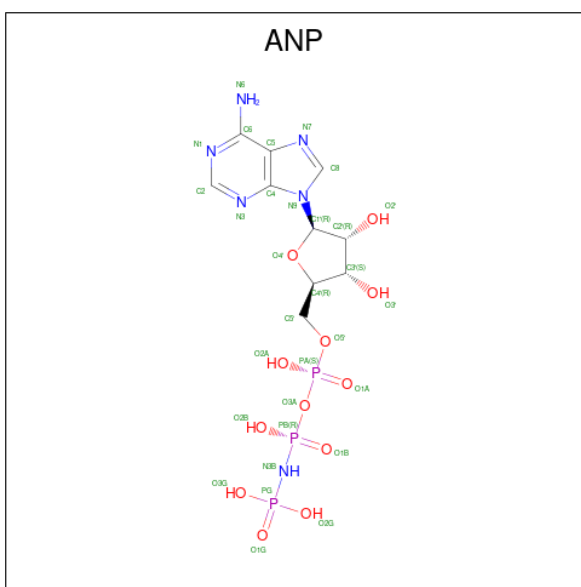
- Molecule 2 is a protein called Alpha-actinin-2.

Mol	Chain	Residues	Atoms					ZeroOcc	AltConf	Trace
2	A	68	Total	C	N	O	S	0	1	0
			515	327	85	101	2			

There are 3 discrepancies between the modelled and reference sequences:

Chain	Residue	Modelled	Actual	Comment	Reference
A	822	SER	-	expression tag	UNP P35609
A	823	ASN	-	expression tag	UNP P35609
A	824	ALA	-	expression tag	UNP P35609

- Molecule 3 is PHOSPHOAMINOPHOSPHONIC ACID-ADENYLATE ESTER (CCD ID: ANP) (formula: C₁₀H₁₇N₆O₁₂P₃) (labeled as "Ligand of Interest" by depositor).

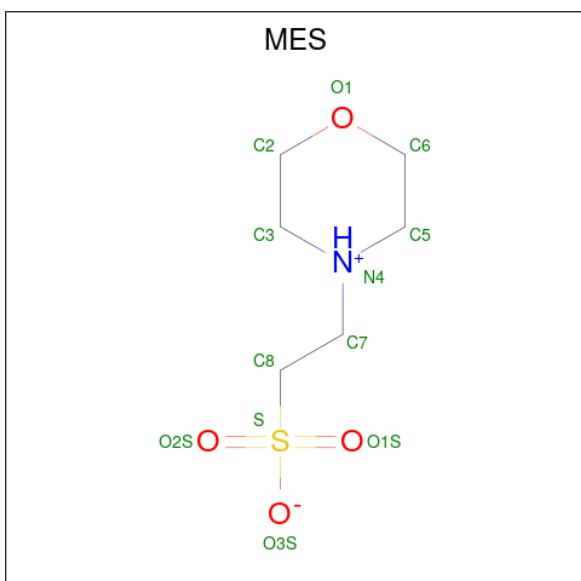


Mol	Chain	Residues	Atoms					ZeroOcc	AltConf
3	B	1	Total	C	N	O	P	0	0
			31	10	6	12	3		

- Molecule 4 is MAGNESIUM ION (CCD ID: MG) (formula: Mg) (labeled as "Ligand of Interest" by depositor).

Mol	Chain	Residues	Atoms		ZeroOcc	AltConf
4	B	1	Total	Mg	0	0
			1	1		

- Molecule 5 is 2-(N-MORPHOLINO)-ETHANESULFONIC ACID (CCD ID: MES) (formula: C₆H₁₃NO₄S) (labeled as "Ligand of Interest" by depositor).

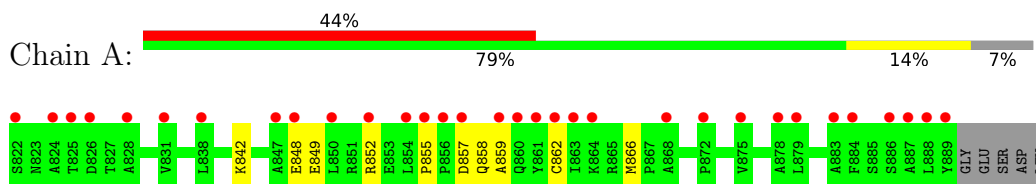


Mol	Chain	Residues	Atoms					ZeroOcc	AltConf
5	B	1	Total	C	N	O	S	0	0
			12	6	1	4	1		

- Molecule 6 is water.

Mol	Chain	Residues	Atoms		ZeroOcc	AltConf
6	B	406	Total	O	0	0
			406	406		
6	A	35	Total	O	0	0
			35	35		

- Molecule 1: Calcium/calmodulin-dependent protein kinase type II subunit alpha



4 Data and refinement statistics

Property	Value	Source
Space group	P 21 21 21	Depositor
Cell constants a, b, c, α , β , γ	64.43Å 72.51Å 92.00Å 90.00° 90.00° 90.00°	Depositor
Resolution (Å)	52.77 – 1.45 52.77 – 1.45	Depositor EDS
% Data completeness (in resolution range)	99.8 (52.77-1.45) 94.7 (52.77-1.45)	Depositor EDS
R_{merge}	(Not available)	Depositor
R_{sym}	(Not available)	Depositor
$\langle I/\sigma(I) \rangle$ ¹	1.23 (at 1.45Å)	Xtriage
Refinement program	PHENIX 1.18.2_3874	Depositor
R, R_{free}	0.190 , 0.215 0.193 , 0.217	Depositor DCC
R_{free} test set	2000 reflections (2.60%)	wwPDB-VP
Wilson B-factor (Å ²)	21.0	Xtriage
Anisotropy	0.407	Xtriage
Bulk solvent k_{sol} (e/Å ³), B_{sol} (Å ²)	0.32 , 27.6	EDS
L-test for twinning ²	$\langle L \rangle = 0.49$, $\langle L^2 \rangle = 0.32$	Xtriage
Estimated twinning fraction	No twinning to report.	Xtriage
F_o, F_c correlation	0.96	EDS
Total number of atoms	3416	wwPDB-VP
Average B, all atoms (Å ²)	30.0	wwPDB-VP

Xtriage's analysis on translational NCS is as follows: *The largest off-origin peak in the Patterson function is 5.05% of the height of the origin peak. No significant pseudotranslation is detected.*

¹Intensities estimated from amplitudes.

²Theoretical values of $\langle |L| \rangle$, $\langle L^2 \rangle$ for acentric reflections are 0.5, 0.333 respectively for untwinned datasets, and 0.375, 0.2 for perfectly twinned datasets.

5 Model quality

5.1 Standard geometry

Bond lengths and bond angles in the following residue types are not validated in this section: ANP, MG, MES

The Z score for a bond length (or angle) is the number of standard deviations the observed value is removed from the expected value. A bond length (or angle) with $|Z| > 5$ is considered an outlier worth inspection. RMSZ is the root-mean-square of all Z scores of the bond lengths (or angles).

Mol	Chain	Bond lengths		Bond angles	
		RMSZ	$\# Z > 5$	RMSZ	$\# Z > 5$
1	B	0.28	0/2477	0.53	1/3355 (0.0%)
2	A	0.17	0/527	0.35	0/719
All	All	0.26	0/3004	0.51	1/4074 (0.0%)

There are no bond length outliers.

All (1) bond angle outliers are listed below:

Mol	Chain	Res	Type	Atoms	Z	Observed(°)	Ideal(°)
1	B	196	LEU	CA-CB-CG	-6.50	93.57	116.30

There are no chirality outliers.

There are no planarity outliers.

5.2 Too-close contacts

In the following table, the Non-H and H(model) columns list the number of non-hydrogen atoms and hydrogen atoms in the chain respectively. The H(added) column lists the number of hydrogen atoms added and optimized by MolProbity. The Clashes column lists the number of clashes within the asymmetric unit, whereas Symm-Clashes lists symmetry-related clashes.

Mol	Chain	Non-H	H(model)	H(added)	Clashes	Symm-Clashes
1	B	2416	0	2389	13	0
2	A	515	0	492	9	0
3	B	31	0	13	0	0
4	B	1	0	0	0	0
5	B	12	0	12	0	0
6	A	35	0	0	3	0
6	B	406	0	0	8	1
All	All	3416	0	2906	22	1

The all-atom clashscore is defined as the number of clashes found per 1000 atoms (including hydrogen atoms). The all-atom clashscore for this structure is 4.

All (22) close contacts within the same asymmetric unit are listed below, sorted by their clash magnitude.

Atom-1	Atom-2	Interatomic distance (Å)	Clash overlap (Å)
1:B:115[A]:CYS:SG	6:B:784:HOH:O	2.26	0.92
2:A:858:GLN:O	6:A:901:HOH:O	1.95	0.84
1:B:115[A]:CYS:SG	6:B:827:HOH:O	2.48	0.72
1:B:164:GLU:O	1:B:167:GLN:HG3	2.02	0.59
2:A:862:CYS:HB3	2:A:866:MET:HE3	1.85	0.58
1:B:297:ARG:NH1	6:B:507:HOH:O	2.37	0.57
1:B:76:HIS:HE1	6:B:787:HOH:O	1.88	0.56
2:A:862:CYS:N	6:A:901:HOH:O	2.06	0.56
2:A:855:PRO:HB2	2:A:857:ASP:OD1	2.07	0.54
1:B:186:ARG:NH2	6:B:513:HOH:O	2.41	0.53
1:B:164:GLU:H	1:B:167:GLN:HE21	1.57	0.52
2:A:857:ASP:OD1	2:A:858:GLN:N	2.42	0.51
2:A:849:GLU:HG2	2:A:852:ARG:HH12	1.75	0.51
1:B:78:SER:OG	6:B:501:HOH:O	2.20	0.50
1:B:139:GLU:OE2	1:B:297:ARG:HD2	2.11	0.50
1:B:106:TYR:HA	1:B:282:HIS:CE1	2.48	0.48
1:B:148:LYS:NZ	6:B:515:HOH:O	2.45	0.48
1:B:18:GLU:HA	1:B:28:ARG:HG2	2.01	0.43
2:A:849:GLU:HG2	2:A:852:ARG:NH1	2.33	0.43
1:B:256:PRO:HD3	6:B:508:HOH:O	2.18	0.42
2:A:842:LYS:NZ	2:A:849:GLU:OE2	2.38	0.42
2:A:859:ALA:C	6:A:901:HOH:O	2.64	0.40

All (1) symmetry-related close contacts are listed below. The label for Atom-2 includes the symmetry operator and encoded unit-cell translations to be applied.

Atom-1	Atom-2	Interatomic distance (Å)	Clash overlap (Å)
6:B:501:HOH:O	6:B:544:HOH:O[2_555]	2.18	0.02

5.3 Torsion angles ⓘ

5.3.1 Protein backbone ⓘ

In the following table, the Percentiles column shows the percent Ramachandran outliers of the chain as a percentile score with respect to all X-ray entries followed by that with respect to entries of similar resolution.

The Analysed column shows the number of residues for which the backbone conformation was analysed, and the total number of residues.

Mol	Chain	Analysed	Favoured	Allowed	Outliers	Percentiles	
1	B	305/317 (96%)	298 (98%)	7 (2%)	0	100	100
2	A	67/73 (92%)	66 (98%)	1 (2%)	0	100	100
All	All	372/390 (95%)	364 (98%)	8 (2%)	0	100	100

There are no Ramachandran outliers to report.

5.3.2 Protein sidechains ⓘ

In the following table, the Percentiles column shows the percent sidechain outliers of the chain as a percentile score with respect to all X-ray entries followed by that with respect to entries of similar resolution.

The Analysed column shows the number of residues for which the sidechain conformation was analysed, and the total number of residues.

Mol	Chain	Analysed	Rotameric	Outliers	Percentiles	
1	B	251/267 (94%)	250 (100%)	1 (0%)	84	70
2	A	52/58 (90%)	51 (98%)	1 (2%)	50	17
All	All	303/325 (93%)	301 (99%)	2 (1%)	76	54

All (2) residues with a non-rotameric sidechain are listed below:

Mol	Chain	Res	Type
1	B	196	LEU
2	A	848	GLU

Sometimes sidechains can be flipped to improve hydrogen bonding and reduce clashes. All (2) such sidechains are listed below:

Mol	Chain	Res	Type
1	B	76	HIS
1	B	167	GLN

5.3.3 RNA ⓘ

There are no RNA molecules in this entry.

5.4 Non-standard residues in protein, DNA, RNA chains [i](#)

There are no non-standard protein/DNA/RNA residues in this entry.

5.5 Carbohydrates [i](#)

There are no oligosaccharides in this entry.

5.6 Ligand geometry [i](#)

Of 3 ligands modelled in this entry, 1 is monoatomic - leaving 2 for Mogul analysis.

In the following table, the Counts columns list the number of bonds (or angles) for which Mogul statistics could be retrieved, the number of bonds (or angles) that are observed in the model and the number of bonds (or angles) that are defined in the Chemical Component Dictionary. The Link column lists molecule types, if any, to which the group is linked. The Z score for a bond length (or angle) is the number of standard deviations the observed value is removed from the expected value. A bond length (or angle) with $|Z| > 2$ is considered an outlier worth inspection. RMSZ is the root-mean-square of all Z scores of the bond lengths (or angles).

Mol	Type	Chain	Res	Link	Bond lengths			Bond angles		
					Counts	RMSZ	# $ Z > 2$	Counts	RMSZ	# $ Z > 2$
5	MES	B	403	-	12,12,12	2.22	1 (8%)	15,16,16	1.77	3 (20%)
3	ANP	B	401	4	33,33,33	0.92	3 (9%)	45,52,52	0.67	1 (2%)

In the following table, the Chirals column lists the number of chiral outliers, the number of chiral centers analysed, the number of these observed in the model and the number defined in the Chemical Component Dictionary. Similar counts are reported in the Torsion and Rings columns. '-' means no outliers of that kind were identified.

Mol	Type	Chain	Res	Link	Chirals	Torsions	Rings
5	MES	B	403	-	-	1/6/14/14	0/1/1/1
3	ANP	B	401	4	-	2/18/38/38	0/3/3/3

All (4) bond length outliers are listed below:

Mol	Chain	Res	Type	Atoms	Z	Observed(Å)	Ideal(Å)
5	B	403	MES	C8-S	-7.41	1.67	1.77
3	B	401	ANP	PG-O1G	3.05	1.50	1.46
3	B	401	ANP	PG-N3B	2.73	1.70	1.63
3	B	401	ANP	PB-N3B	2.23	1.69	1.63

All (4) bond angle outliers are listed below:

Mol	Chain	Res	Type	Atoms	Z	Observed(°)	Ideal(°)
5	B	403	MES	C5-N4-C3	4.73	119.04	108.84
5	B	403	MES	O2S-S-C8	2.38	110.32	106.73
5	B	403	MES	O3S-S-C8	2.12	110.15	106.00
3	B	401	ANP	O2B-PB-O3A	2.02	111.38	104.64

There are no chirality outliers.

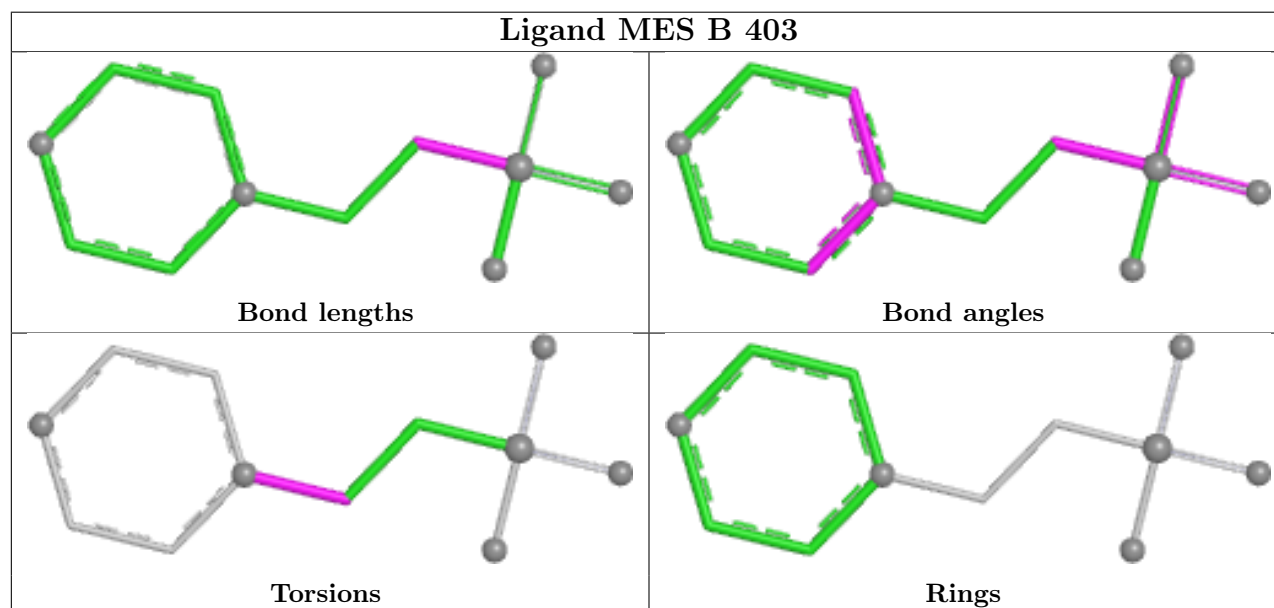
All (3) torsion outliers are listed below:

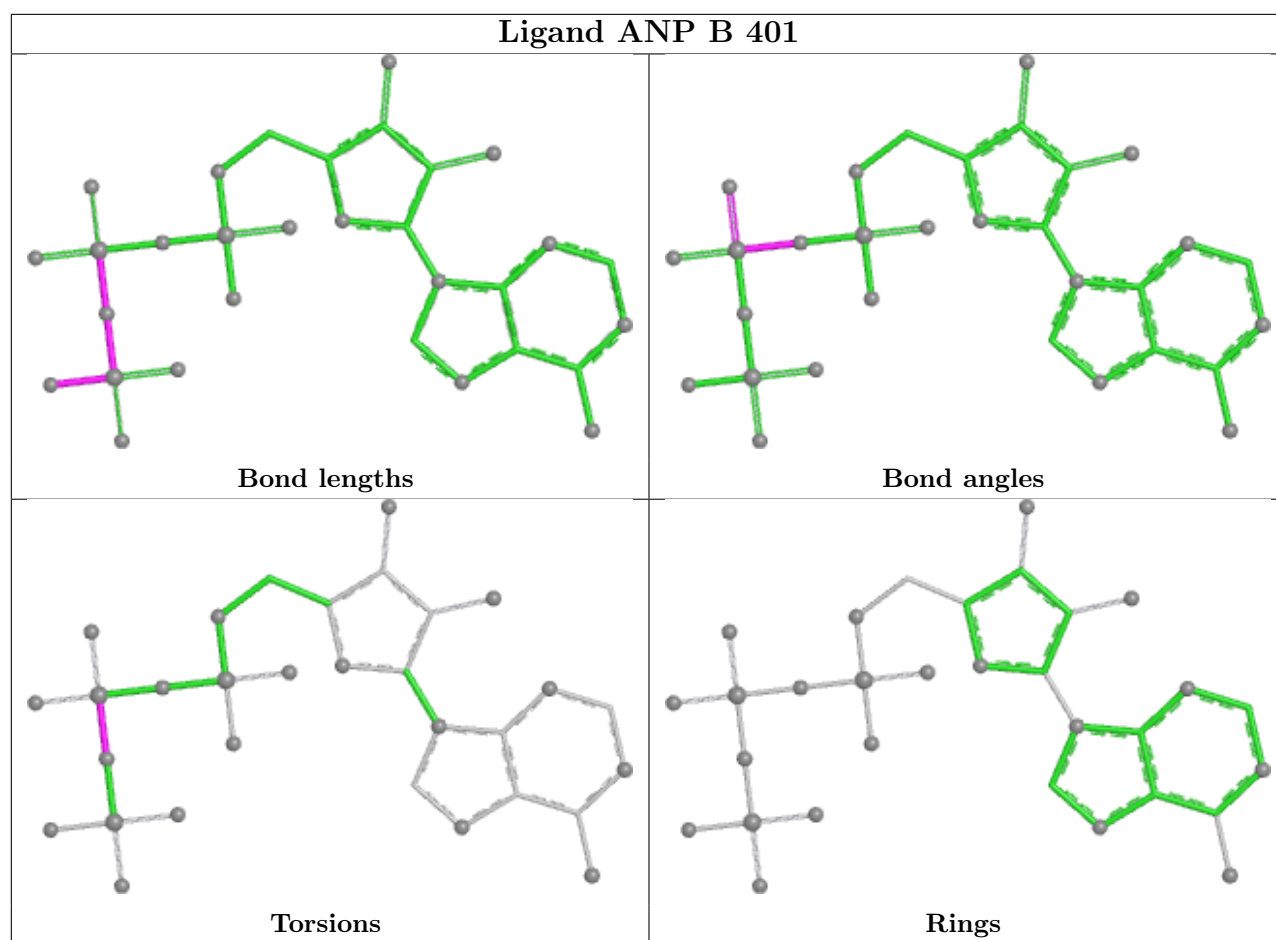
Mol	Chain	Res	Type	Atoms
3	B	401	ANP	PG-N3B-PB-O1B
3	B	401	ANP	PG-N3B-PB-O3A
5	B	403	MES	C8-C7-N4-C3

There are no ring outliers.

No monomer is involved in short contacts.

The following is a two-dimensional graphical depiction of Mogul quality analysis of bond lengths, bond angles, torsion angles, and ring geometry for all instances of the Ligand of Interest. In addition, ligands with molecular weight > 250 and outliers as shown on the validation Tables will also be included. For torsion angles, if less than 5% of the Mogul distribution of torsion angles is within 10 degrees of the torsion angle in question, then that torsion angle is considered an outlier. Any bond that is central to one or more torsion angles identified as an outlier by Mogul will be highlighted in the graph. For rings, the root-mean-square deviation (RMSD) between the ring in question and similar rings identified by Mogul is calculated over all ring torsion angles. If the average RMSD is greater than 60 degrees and the minimal RMSD between the ring in question and any Mogul-identified rings is also greater than 60 degrees, then that ring is considered an outlier. The outliers are highlighted in purple. The color gray indicates Mogul did not find sufficient equivalents in the CSD to analyse the geometry.





5.7 Other polymers [i](#)

There are no such residues in this entry.

5.8 Polymer linkage issues [i](#)

There are no chain breaks in this entry.

6 Fit of model and data ⓘ

6.1 Protein, DNA and RNA chains ⓘ

In the following table, the column labelled ‘#RSRZ > 2’ contains the number (and percentage) of RSRZ outliers, followed by percent RSRZ outliers for the chain as percentile scores relative to all X-ray entries and entries of similar resolution. The OWAB column contains the minimum, median, 95th percentile and maximum values of the occupancy-weighted average B-factor per residue. The column labelled ‘Q < 0.9’ lists the number of (and percentage) of residues with an average occupancy less than 0.9.

Mol	Chain	Analysed	<RSRZ>	#RSRZ>2	OWAB(Å ²)	Q<0.9
1	B	303/317 (95%)	0.45	22 (7%) 21 20	10, 24, 41, 71	4 (1%)
2	A	68/73 (93%)	2.18	32 (47%) 0 0	23, 42, 54, 58	1 (1%)
All	All	371/390 (95%)	0.77	54 (14%) 6 6	10, 26, 50, 71	5 (1%)

All (54) RSRZ outliers are listed below:

Mol	Chain	Res	Type	RSRZ
2	A	824	ALA	6.7
2	A	859	ALA	5.9
1	B	306	ALA	5.5
2	A	889	TYR	5.5
1	B	6	CYS	5.4
1	B	173	PHE	5.0
1	B	214	TRP	4.7
1	B	305	ALA	4.5
1	B	303	ILE	4.4
1	B	5	THR	4.4
1	B	24	PHE	4.4
1	B	304	LEU	4.3
2	A	887	ALA	4.2
2	A	825	THR	3.9
2	A	888	LEU	3.8
1	B	307	MET	3.7
2	A	854	LEU	3.7
1	B	302	ALA	3.6
2	A	857	ASP	3.5
2	A	856	PRO	3.5
2	A	861	TYR	3.4
2	A	855	PRO	3.4
2	A	826	ASP	3.3
2	A	863	ILE	3.2

Continued on next page...

Continued from previous page...

Mol	Chain	Res	Type	RSRZ
1	B	297	ARG	3.2
2	A	822	SER	3.2
2	A	828	ALA	3.2
2	A	864	LYS	3.0
2	A	862	CYS	3.0
2	A	886	SER	2.9
2	A	847	ALA	2.7
2	A	831	VAL	2.7
1	B	34	LEU	2.6
1	B	47	LYS	2.6
2	A	850	LEU	2.5
1	B	167	GLN	2.5
2	A	868	ALA	2.4
1	B	301	GLY	2.4
2	A	838	LEU	2.4
2	A	872	PRO	2.3
2	A	875	VAL	2.3
2	A	860	GLN	2.3
2	A	884	PHE	2.2
2	A	883	ALA	2.2
2	A	852	ARG	2.2
2	A	848	GLU	2.2
1	B	66	LEU	2.1
1	B	147	LEU	2.1
1	B	254	ILE	2.1
1	B	23	ALA	2.1
2	A	879	LEU	2.1
1	B	52	ARG	2.1
2	A	878	ALA	2.0
1	B	82	GLU	2.0

6.2 Non-standard residues in protein, DNA, RNA chains [i](#)

There are no non-standard protein/DNA/RNA residues in this entry.

6.3 Carbohydrates [i](#)

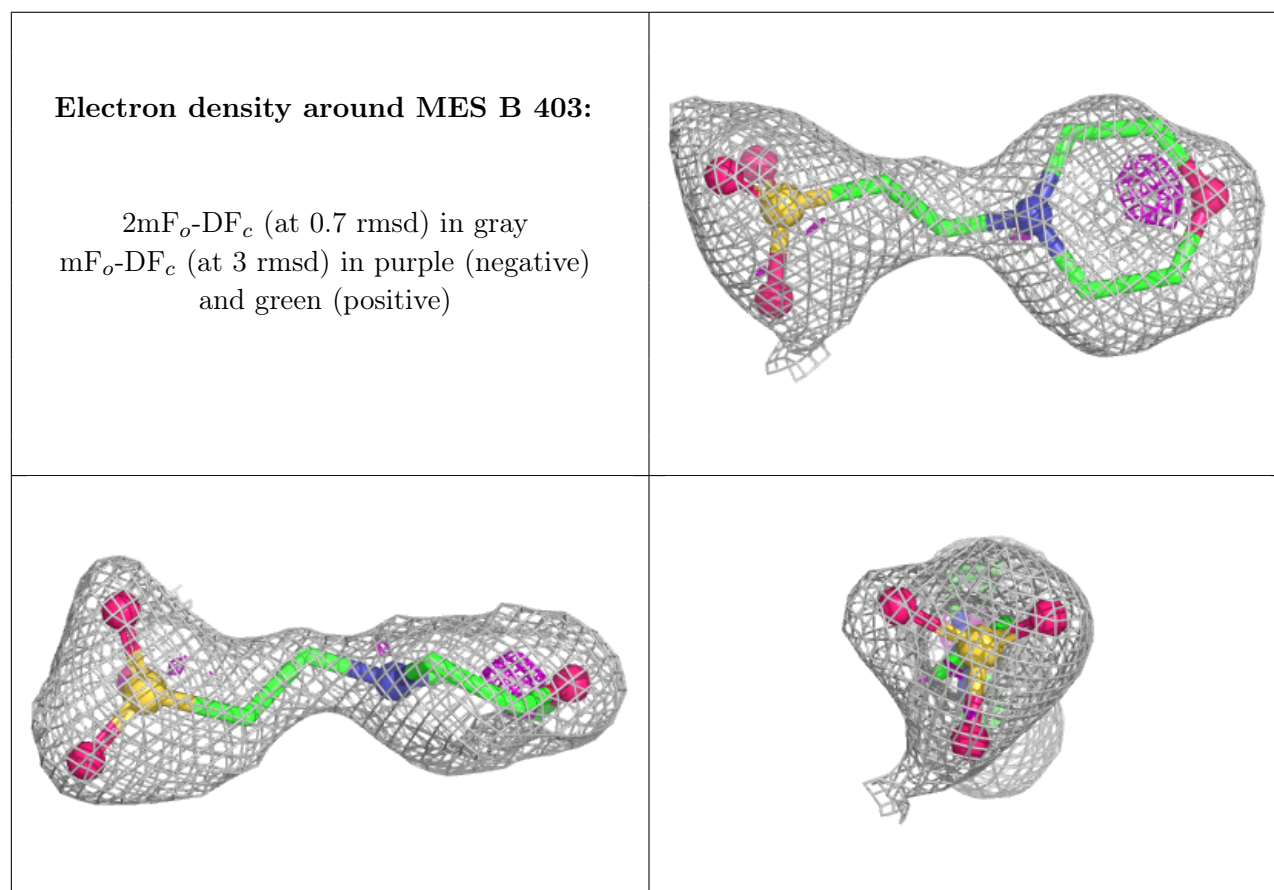
There are no oligosaccharides in this entry.

6.4 Ligands [i](#)

In the following table, the Atoms column lists the number of modelled atoms in the group and the number defined in the chemical component dictionary. The B-factors column lists the minimum, median, 95th percentile and maximum values of B factors of atoms in the group. The column labelled 'Q< 0.9' lists the number of atoms with occupancy less than 0.9.

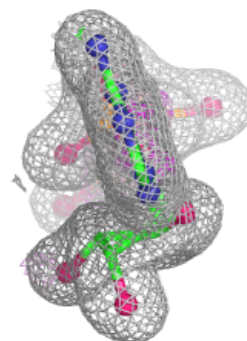
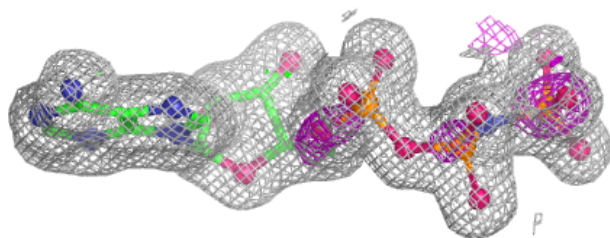
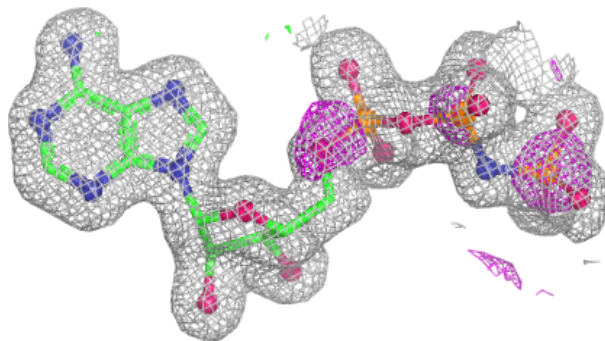
Mol	Type	Chain	Res	Atoms	RSCC	RSR	B-factors(\AA^2)	Q<0.9
5	MES	B	403	12/12	0.88	0.13	36,49,53,55	0
3	ANP	B	401	31/31	0.97	0.06	18,22,26,28	0
4	MG	B	402	1/1	0.99	0.09	24,24,24,24	0

The following is a graphical depiction of the model fit to experimental electron density of all instances of the Ligand of Interest. In addition, ligands with molecular weight > 250 and outliers as shown on the geometry validation Tables will also be included. Each fit is shown from different orientation to approximate a three-dimensional view.



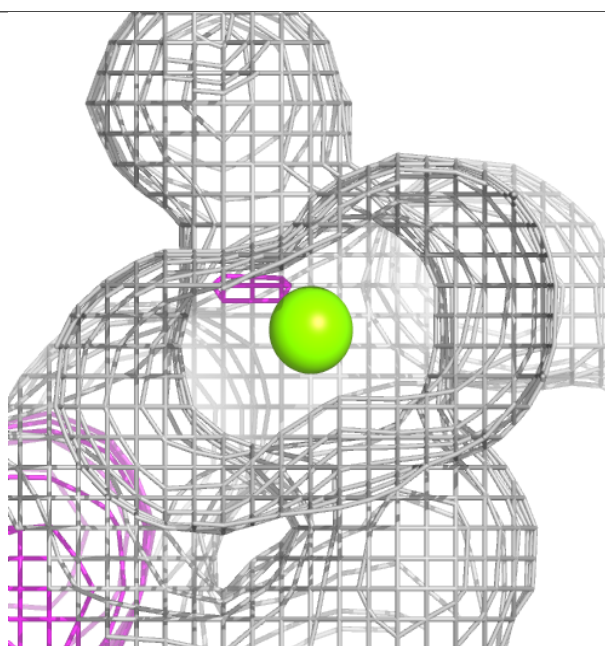
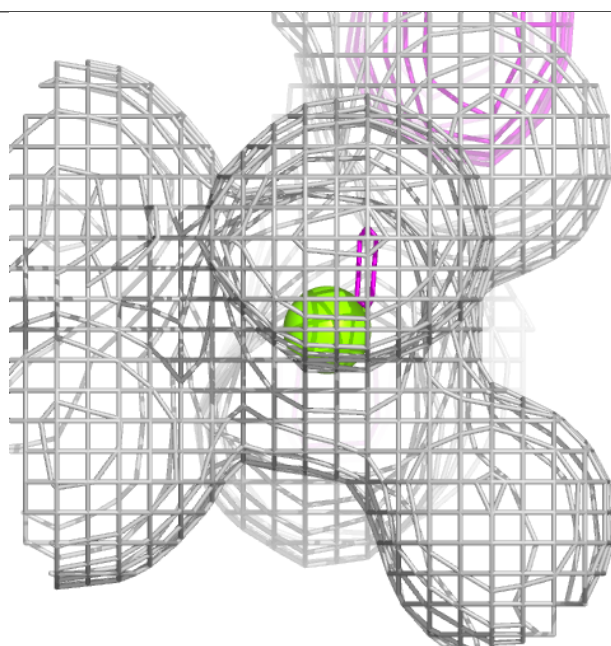
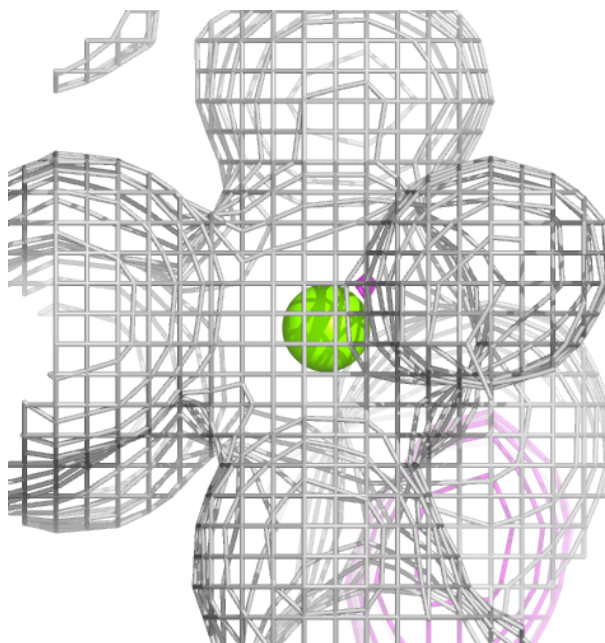
Electron density around ANP B 401:

$2mF_o-DF_c$ (at 0.7 rmsd) in gray
 mF_o-DF_c (at 3 rmsd) in purple (negative)
and green (positive)



Electron density around MG B 402:

$2mF_o-DF_c$ (at 0.7 rmsd) in gray
 mF_o-DF_c (at 3 rmsd) in purple (negative)
and green (positive)



6.5 Other polymers [i](#)

There are no such residues in this entry.