



Full wwPDB X-ray Structure Validation Report ⓘ

Mar 5, 2026 – 08:22 PM UTC

PDB ID : 7DLI / pdb_00007dli
Title : Crystal structure of mouse CRY1 in complex with KL001 compound
Authors : Miller, S.A.; Aikawa, Y.; Hirota, T.
Deposited on : 2020-11-27
Resolution : 2.20 Å(reported)

This is a Full wwPDB X-ray Structure Validation Report for a publicly released PDB entry.

We welcome your comments at validation@mail.wwpdb.org

A user guide is available at

<https://www.wwpdb.org/validation/2017/XrayValidationReportHelp>

with specific help available everywhere you see the ⓘ symbol.

The types of validation reports are described at

<http://www.wwpdb.org/validation/2017/FAQs#types>.

The following versions of software and data (see [references ⓘ](#)) were used in the production of this report:

MolProbity : 4-5-2 with Phenix2.0
Mogul : 2022.3.0, CSD as543be (2022)
Xtriage (Phenix) : 2.0
EDS : 3.0
Buster-report : wwPDB partial adaption of 1.1.7 (2018)
Percentile statistics : 20250101.v01 (using entries in the PDB archive January 1st 2025)
CCP4 : 9.0.010 (Gargrove)
Density-Fitness : 1.0.12
Ideal geometry (proteins) : Engh & Huber (2001)
Ideal geometry (DNA, RNA) : Parkinson et al. (1996)
Validation Pipeline (wwPDB-VP) : 2.49

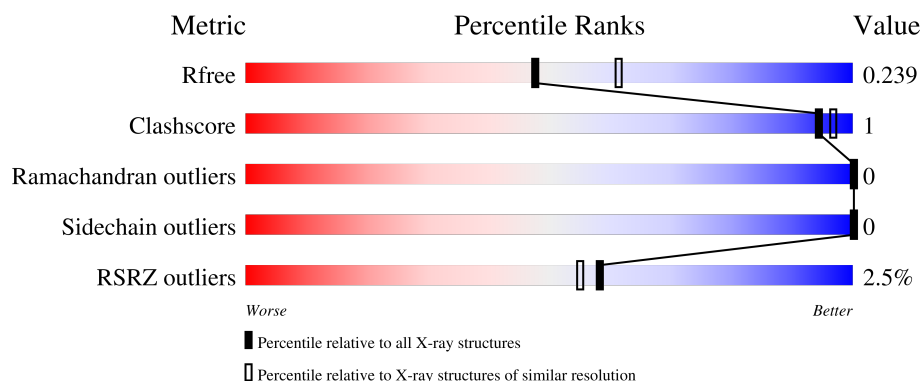
1 Overall quality at a glance

The following experimental techniques were used to determine the structure:

X-RAY DIFFRACTION

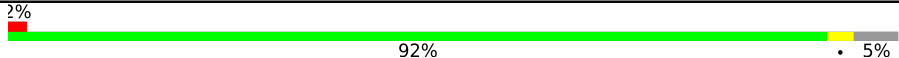
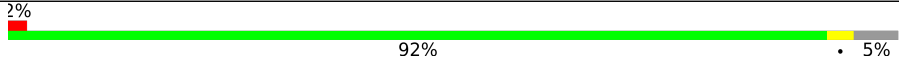
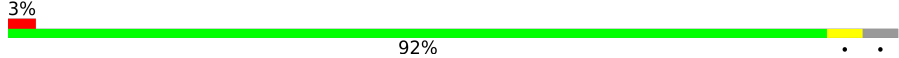
The reported resolution of this entry is 2.20 Å.

Percentile scores (ranging between 0-100) for global validation metrics of the entry are shown in the following graphic. The table shows the number of entries on which the scores are based.



Metric	Whole archive (#Entries)	Similar resolution (#Entries, resolution range(Å))
R_{free}	180053	6164 (2.20-2.20)
Clashscore	190562	6851 (2.20-2.20)
Ramachandran outliers	187476	6768 (2.20-2.20)
Sidechain outliers	187428	6769 (2.20-2.20)
RSRZ outliers	180081	6166 (2.20-2.20)

The table below summarises the geometric issues observed across the polymeric chains and their fit to the electron density. The red, orange, yellow and green segments of the lower bar indicate the fraction of residues that contain outliers for ≥ 3 , 2, 1 and 0 types of geometric quality criteria respectively. A grey segment represents the fraction of residues that are not modelled. The numeric value for each fraction is indicated below the corresponding segment, with a dot representing fractions $\leq 5\%$. The upper red bar (where present) indicates the fraction of residues that have poor fit to the electron density. The numeric value is given above the bar.

Mol	Chain	Length	Quality of chain
1	A	498	
1	B	498	
1	C	498	

2 Entry composition

There are 4 unique types of molecules in this entry. The entry contains 11251 atoms, of which 0 are hydrogens and 0 are deuteriums.

In the tables below, the ZeroOcc column contains the number of atoms modelled with zero occupancy, the AltConf column contains the number of residues with at least one atom in alternate conformation and the Trace column contains the number of residues modelled with at most 2 atoms.

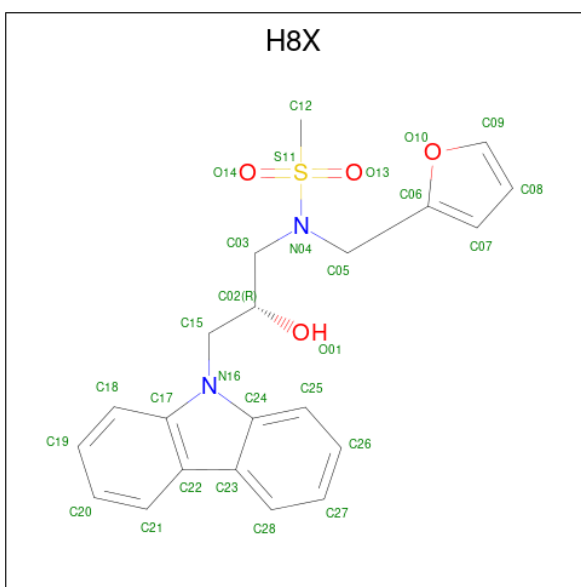
- Molecule 1 is a protein called Cryptochrome-1.

Mol	Chain	Residues	Atoms					ZeroOcc	AltConf	Trace
1	A	472	Total	C	N	O	S	0	0	0
			3575	2306	609	641	19			
1	B	475	Total	C	N	O	S	0	0	0
			3579	2304	610	644	21			
1	C	476	Total	C	N	O	S	0	0	0
			3609	2339	607	643	20			

There are 6 discrepancies between the modelled and reference sequences:

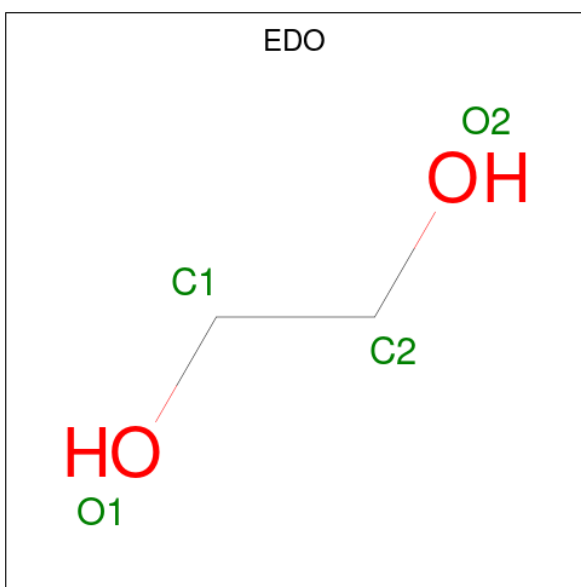
Chain	Residue	Modelled	Actual	Comment	Reference
A	-1	GLY	-	expression tag	UNP P97784
A	0	THR	-	expression tag	UNP P97784
B	-1	GLY	-	expression tag	UNP P97784
B	0	THR	-	expression tag	UNP P97784
C	-1	GLY	-	expression tag	UNP P97784
C	0	THR	-	expression tag	UNP P97784

- Molecule 2 is N-[(2R)-3-carbazol-9-yl-2-oxidanyl-propyl]-N-(furan-2-ylmethyl)methane sulfonamide (CCD ID: H8X) (formula: C₂₁H₂₂N₂O₄S) (labeled as "Ligand of Interest" by depositor).



Mol	Chain	Residues	Atoms					ZeroOcc	AltConf
2	A	1	Total	C	N	O	S	0	0
			28	21	2	4	1		
2	B	1	Total	C	N	O	S	0	0
			28	21	2	4	1		
2	C	1	Total	C	N	O	S	0	0
			28	21	2	4	1		

- Molecule 3 is 1,2-ETHANEDIOL (CCD ID: EDO) (formula: C₂H₆O₂).



Mol	Chain	Residues	Atoms			ZeroOcc	AltConf
3	C	1	Total	C	O	0	0
			4	2	2		

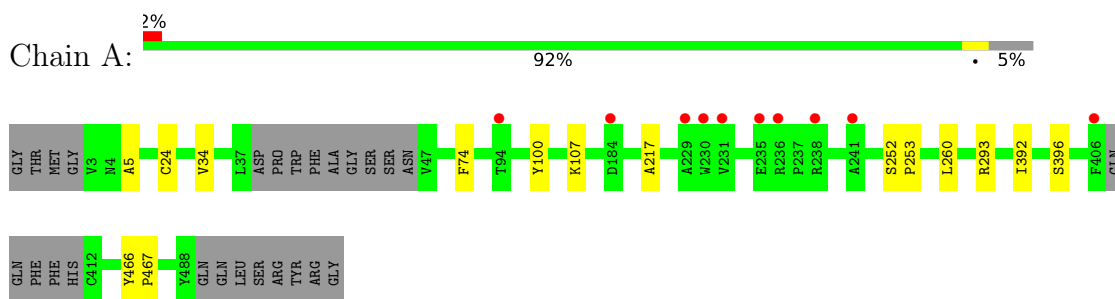
- Molecule 4 is water.

Mol	Chain	Residues	Atoms		ZeroOcc	AltConf
4	A	129	Total 129	O 129	0	0
4	B	143	Total 143	O 143	0	0
4	C	128	Total 128	O 128	0	0

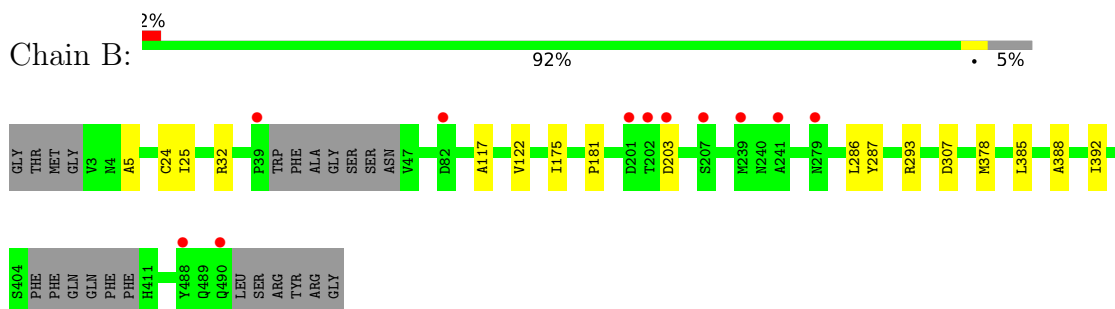
3 Residue-property plots [i](#)

These plots are drawn for all protein, RNA, DNA and oligosaccharide chains in the entry. The first graphic for a chain summarises the proportions of the various outlier classes displayed in the second graphic. The second graphic shows the sequence view annotated by issues in geometry and electron density. Residues are color-coded according to the number of geometric quality criteria for which they contain at least one outlier: green = 0, yellow = 1, orange = 2 and red = 3 or more. A red dot above a residue indicates a poor fit to the electron density ($RSRZ > 2$). Stretches of 2 or more consecutive residues without any outlier are shown as a green connector. Residues present in the sample, but not in the model, are shown in grey.

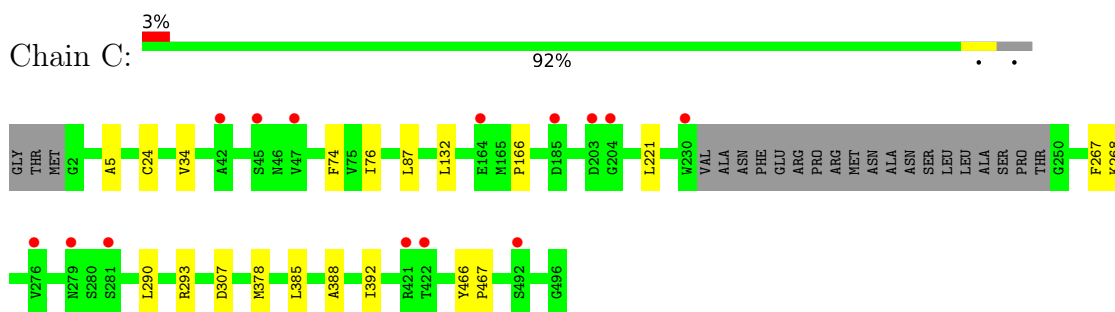
• Molecule 1: Cryptochrome-1



• Molecule 1: Cryptochrome-1



• Molecule 1: Cryptochrome-1



4 Data and refinement statistics

Property	Value	Source
Space group	P 21 21 21	Depositor
Cell constants a, b, c, α , β , γ	78.60Å 134.82Å 145.59Å 90.00° 90.00° 90.00°	Depositor
Resolution (Å)	51.17 – 2.20 51.17 – 2.20	Depositor EDS
% Data completeness (in resolution range)	98.8 (51.17-2.20) 98.8 (51.17-2.20)	Depositor EDS
R_{merge}	0.07	Depositor
R_{sym}	(Not available)	Depositor
$\langle I/\sigma(I) \rangle$ ¹	4.43 (at 2.20Å)	Xtriage
Refinement program	REFMAC 5.8.0257, PHENIX 1.18.2_3874	Depositor
R, R_{free}	0.190 , 0.230 0.198 , 0.239	Depositor DCC
R_{free} test set	3996 reflections (5.05%)	wwPDB-VP
Wilson B-factor (Å ²)	25.7	Xtriage
Anisotropy	0.552	Xtriage
Bulk solvent k_{sol} (e/Å ³), B_{sol} (Å ²)	0.36 , 48.7	EDS
L-test for twinning ²	$\langle L \rangle = 0.49$, $\langle L^2 \rangle = 0.32$	Xtriage
Estimated twinning fraction	No twinning to report.	Xtriage
F_o, F_c correlation	0.94	EDS
Total number of atoms	11251	wwPDB-VP
Average B, all atoms (Å ²)	30.0	wwPDB-VP

Xtriage's analysis on translational NCS is as follows: *The largest off-origin peak in the Patterson function is 4.70% of the height of the origin peak. No significant pseudotranslation is detected.*

¹Intensities estimated from amplitudes.

²Theoretical values of $\langle |L| \rangle$, $\langle L^2 \rangle$ for acentric reflections are 0.5, 0.333 respectively for untwinned datasets, and 0.375, 0.2 for perfectly twinned datasets.

5 Model quality

5.1 Standard geometry

Bond lengths and bond angles in the following residue types are not validated in this section: EDO, H8X

The Z score for a bond length (or angle) is the number of standard deviations the observed value is removed from the expected value. A bond length (or angle) with $|Z| > 5$ is considered an outlier worth inspection. RMSZ is the root-mean-square of all Z scores of the bond lengths (or angles).

Mol	Chain	Bond lengths		Bond angles	
		RMSZ	# Z >5	RMSZ	# Z >5
1	A	0.35	0/3679	0.55	0/5041
1	B	0.39	0/3679	0.55	0/5035
1	C	0.37	0/3718	0.55	0/5087
All	All	0.37	0/11076	0.55	0/15163

There are no bond length outliers.

There are no bond angle outliers.

There are no chirality outliers.

There are no planarity outliers.

5.2 Too-close contacts

In the following table, the Non-H and H(model) columns list the number of non-hydrogen atoms and hydrogen atoms in the chain respectively. The H(added) column lists the number of hydrogen atoms added and optimized by MolProbity. The Clashes column lists the number of clashes within the asymmetric unit, whereas Symm-Clashes lists symmetry-related clashes.

Mol	Chain	Non-H	H(model)	H(added)	Clashes	Symm-Clashes
1	A	3575	0	3292	8	0
1	B	3579	0	3305	9	1
1	C	3609	0	3314	10	0
2	A	28	0	0	1	0
2	B	28	0	0	0	1
2	C	28	0	0	0	0
3	C	4	0	6	0	0
4	A	129	0	0	0	0
4	B	143	0	0	0	0
4	C	128	0	0	0	0
All	All	11251	0	9917	27	1

The all-atom clashscore is defined as the number of clashes found per 1000 atoms (including hydrogen atoms). The all-atom clashscore for this structure is 1.

All (27) close contacts within the same asymmetric unit are listed below, sorted by their clash magnitude.

Atom-1	Atom-2	Interatomic distance (Å)	Clash overlap (Å)
1:C:293:ARG:HG3	1:C:392:ILE:HD11	1.82	0.61
1:B:32:ARG:NH2	1:B:181:PRO:HG2	2.17	0.58
1:C:385:LEU:HB3	1:C:388:ALA:HB2	1.87	0.57
1:A:34:VAL:HG12	1:A:74:PHE:HB2	1.88	0.55
1:A:293:ARG:HG3	1:A:392:ILE:HD11	1.89	0.55
1:B:293:ARG:HG3	1:B:392:ILE:HD11	1.89	0.54
1:A:252:SER:OG	1:A:253:PRO:HD3	2.12	0.49
1:C:5:ALA:HB1	1:C:24:CYS:SG	2.53	0.48
1:B:117:ALA:HB1	1:B:122:VAL:HB	1.96	0.47
1:A:466:TYR:CD1	1:A:467:PRO:HD2	2.50	0.47
1:B:385:LEU:HD23	1:B:388:ALA:HB2	1.96	0.47
1:C:307:ASP:O	1:C:378:MET:HE1	2.15	0.47
1:B:32:ARG:CZ	1:B:181:PRO:HG2	2.45	0.46
1:B:286:LEU:HD23	1:B:287:TYR:CZ	2.51	0.44
1:B:5:ALA:HB1	1:B:24:CYS:SG	2.57	0.44
1:C:76:ILE:HD13	1:C:87:LEU:HD11	2.00	0.44
1:C:221:LEU:HD21	1:C:268:LYS:HG3	2.00	0.43
1:A:100:TYR:OH	1:A:107:LYS:HD3	2.18	0.43
1:A:5:ALA:HB1	1:A:24:CYS:SG	2.58	0.43
1:C:166:PRO:HD3	1:C:267:PHE:CE1	2.53	0.43
1:C:34:VAL:HG12	1:C:74:PHE:HB2	2.01	0.43
1:B:307:ASP:HB2	1:B:378:MET:HE1	2.00	0.43
1:A:217:ALA:HB1	1:A:260:LEU:HB2	2.01	0.42
1:B:25:ILE:HD13	1:B:175:ILE:HD13	2.01	0.42
1:A:396:SER:OG	2:A:501:H8X:O01	2.34	0.41
1:C:132:LEU:HD11	1:C:290:LEU:HB3	2.02	0.41
1:C:466:TYR:CD1	1:C:467:PRO:HD2	2.57	0.40

All (1) symmetry-related close contacts are listed below. The label for Atom-2 includes the symmetry operator and encoded unit-cell translations to be applied.

Atom-1	Atom-2	Interatomic distance (Å)	Clash overlap (Å)
1:B:203:ASP:CB	2:B:501:H8X:O14[4_455]	1.38	0.82

5.3 Torsion angles

5.3.1 Protein backbone

In the following table, the Percentiles column shows the percent Ramachandran outliers of the chain as a percentile score with respect to all X-ray entries followed by that with respect to entries of similar resolution.

The Analysed column shows the number of residues for which the backbone conformation was analysed, and the total number of residues.

Mol	Chain	Analysed	Favoured	Allowed	Outliers	Percentiles	
1	A	466/498 (94%)	457 (98%)	9 (2%)	0	100	100
1	B	469/498 (94%)	461 (98%)	8 (2%)	0	100	100
1	C	472/498 (95%)	462 (98%)	10 (2%)	0	100	100
All	All	1407/1494 (94%)	1380 (98%)	27 (2%)	0	100	100

There are no Ramachandran outliers to report.

5.3.2 Protein sidechains

In the following table, the Percentiles column shows the percent sidechain outliers of the chain as a percentile score with respect to all X-ray entries followed by that with respect to entries of similar resolution.

The Analysed column shows the number of residues for which the sidechain conformation was analysed, and the total number of residues.

Mol	Chain	Analysed	Rotameric	Outliers	Percentiles	
1	A	347/431 (80%)	347 (100%)	0	100	100
1	B	347/431 (80%)	347 (100%)	0	100	100
1	C	347/431 (80%)	347 (100%)	0	100	100
All	All	1041/1293 (80%)	1041 (100%)	0	100	100

There are no protein residues with a non-rotameric sidechain to report.

Sometimes sidechains can be flipped to improve hydrogen bonding and reduce clashes. All (3) such sidechains are listed below:

Mol	Chain	Res	Type
1	A	242	ASN
1	B	393	ASN
1	C	4	ASN

5.3.3 RNA ⓘ

There are no RNA molecules in this entry.

5.4 Non-standard residues in protein, DNA, RNA chains ⓘ

There are no non-standard protein/DNA/RNA residues in this entry.

5.5 Carbohydrates ⓘ

There are no oligosaccharides in this entry.

5.6 Ligand geometry ⓘ

4 ligands are modelled in this entry.

In the following table, the Counts columns list the number of bonds (or angles) for which Mogul statistics could be retrieved, the number of bonds (or angles) that are observed in the model and the number of bonds (or angles) that are defined in the Chemical Component Dictionary. The Link column lists molecule types, if any, to which the group is linked. The Z score for a bond length (or angle) is the number of standard deviations the observed value is removed from the expected value. A bond length (or angle) with $|Z| > 2$ is considered an outlier worth inspection. RMSZ is the root-mean-square of all Z scores of the bond lengths (or angles).

Mol	Type	Chain	Res	Link	Bond lengths			Bond angles		
					Counts	RMSZ	$\# Z > 2$	Counts	RMSZ	$\# Z > 2$
3	EDO	C	501	-	3,3,3	0.60	0	2,2,2	0.77	0
2	H8X	B	501	-	31,31,31	1.68	6 (19%)	41,45,45	1.33	8 (19%)
2	H8X	C	502	-	31,31,31	1.51	5 (16%)	41,45,45	1.27	2 (4%)
2	H8X	A	501	-	31,31,31	1.54	4 (12%)	41,45,45	1.44	6 (14%)

In the following table, the Chirals column lists the number of chiral outliers, the number of chiral centers analysed, the number of these observed in the model and the number defined in the Chemical Component Dictionary. Similar counts are reported in the Torsion and Rings columns. '-' means no outliers of that kind were identified.

Mol	Type	Chain	Res	Link	Chirals	Torsions	Rings
3	EDO	C	501	-	-	1/1/1/1	-
2	H8X	B	501	-	-	1/18/18/18	0/4/4/4
2	H8X	C	502	-	-	2/18/18/18	0/4/4/4
2	H8X	A	501	-	-	7/18/18/18	0/4/4/4

All (15) bond length outliers are listed below:

Mol	Chain	Res	Type	Atoms	Z	Observed(Å)	Ideal(Å)
2	B	501	H8X	S11-N04	4.53	1.71	1.63
2	A	501	H8X	C15-C02	4.30	1.63	1.52
2	B	501	H8X	C24-N16	4.15	1.45	1.38
2	A	501	H8X	S11-N04	4.09	1.70	1.63
2	C	502	H8X	C12-S11	-3.63	1.68	1.75
2	B	501	H8X	C12-S11	-3.57	1.68	1.75
2	A	501	H8X	C12-S11	-3.35	1.68	1.75
2	C	502	H8X	C03-C02	3.18	1.60	1.52
2	C	502	H8X	C03-N04	3.13	1.53	1.47
2	C	502	H8X	C05-N04	2.87	1.51	1.47
2	B	501	H8X	C15-C02	2.85	1.59	1.52
2	C	502	H8X	S11-N04	2.78	1.68	1.63
2	B	501	H8X	C05-C06	2.43	1.53	1.48
2	B	501	H8X	C03-C02	2.36	1.58	1.52
2	A	501	H8X	C15-N16	-2.16	1.43	1.46

All (16) bond angle outliers are listed below:

Mol	Chain	Res	Type	Atoms	Z	Observed(°)	Ideal(°)
2	C	502	H8X	C02-C03-N04	5.49	120.72	113.24
2	A	501	H8X	C02-C03-N04	3.91	118.57	113.24
2	B	501	H8X	O14-S11-N04	3.65	110.07	107.02
2	A	501	H8X	C12-S11-N04	-3.64	102.99	107.27
2	A	501	H8X	O14-S11-N04	3.57	110.00	107.02
2	A	501	H8X	C03-C02-C15	3.55	119.76	110.78
2	B	501	H8X	C12-S11-N04	-3.32	103.38	107.27
2	C	502	H8X	C12-S11-N04	-3.09	103.64	107.27
2	A	501	H8X	O13-S11-C12	2.51	111.75	108.30
2	B	501	H8X	C03-C02-C15	2.43	116.92	110.78
2	B	501	H8X	O13-S11-N04	2.18	108.84	107.02
2	B	501	H8X	O14-S11-O13	-2.13	115.27	118.46
2	B	501	H8X	C02-C03-N04	2.10	116.10	113.24
2	B	501	H8X	C05-N04-C03	-2.10	111.43	116.35
2	A	501	H8X	C05-N04-C03	-2.08	111.47	116.35
2	B	501	H8X	C24-N16-C17	-2.05	106.28	108.43

There are no chirality outliers.

All (11) torsion outliers are listed below:

Mol	Chain	Res	Type	Atoms
2	A	501	H8X	C15-C02-C03-N04

Continued on next page...

Continued from previous page...

Mol	Chain	Res	Type	Atoms
2	A	501	H8X	O01-C02-C03-N04
2	A	501	H8X	C03-N04-S11-C12
2	A	501	H8X	C03-N04-S11-O13
2	A	501	H8X	C05-N04-S11-C12
2	A	501	H8X	C05-N04-S11-O13
2	A	501	H8X	C05-N04-S11-O14
3	C	501	EDO	O1-C1-C2-O2
2	B	501	H8X	C03-C02-C15-N16
2	C	502	H8X	C15-C02-C03-N04
2	C	502	H8X	C02-C15-N16-C17

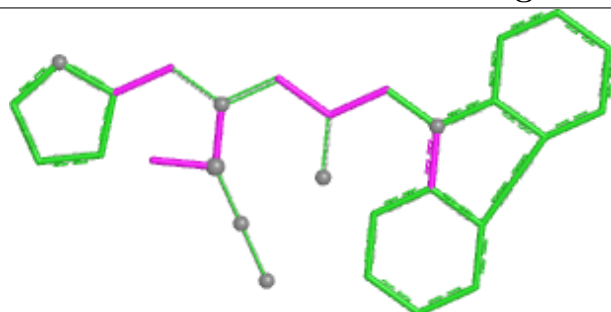
There are no ring outliers.

2 monomers are involved in 2 short contacts:

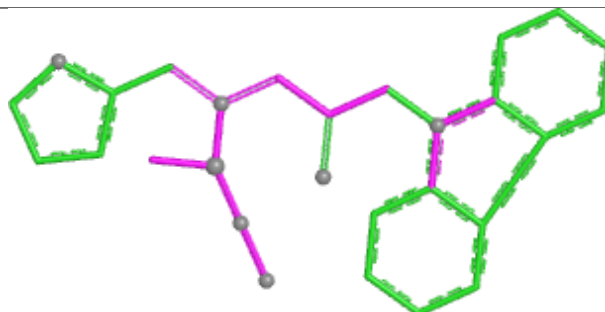
Mol	Chain	Res	Type	Clashes	Symm-Clashes
2	B	501	H8X	0	1
2	A	501	H8X	1	0

The following is a two-dimensional graphical depiction of Mogul quality analysis of bond lengths, bond angles, torsion angles, and ring geometry for all instances of the Ligand of Interest. In addition, ligands with molecular weight > 250 and outliers as shown on the validation Tables will also be included. For torsion angles, if less than 5% of the Mogul distribution of torsion angles is within 10 degrees of the torsion angle in question, then that torsion angle is considered an outlier. Any bond that is central to one or more torsion angles identified as an outlier by Mogul will be highlighted in the graph. For rings, the root-mean-square deviation (RMSD) between the ring in question and similar rings identified by Mogul is calculated over all ring torsion angles. If the average RMSD is greater than 60 degrees and the minimal RMSD between the ring in question and any Mogul-identified rings is also greater than 60 degrees, then that ring is considered an outlier. The outliers are highlighted in purple. The color gray indicates Mogul did not find sufficient equivalents in the CSD to analyse the geometry.

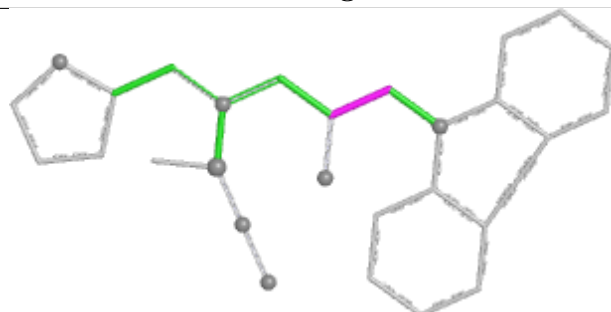
Ligand H8X B 501



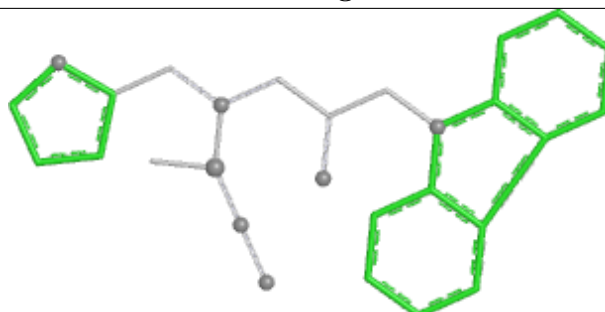
Bond lengths



Bond angles

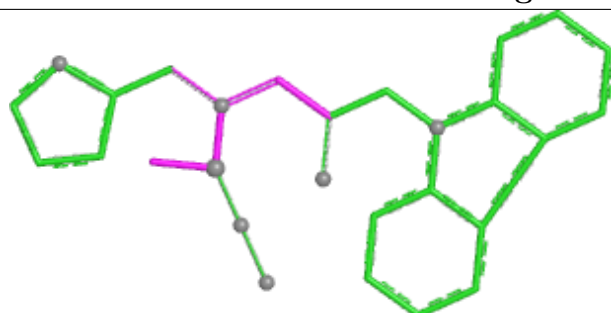


Torsions

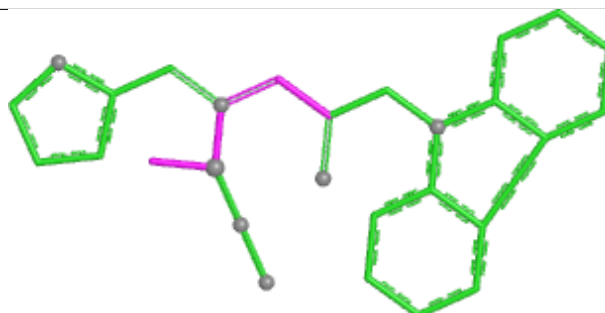


Rings

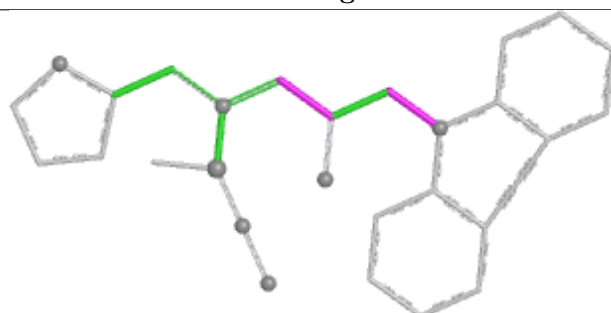
Ligand H8X C 502



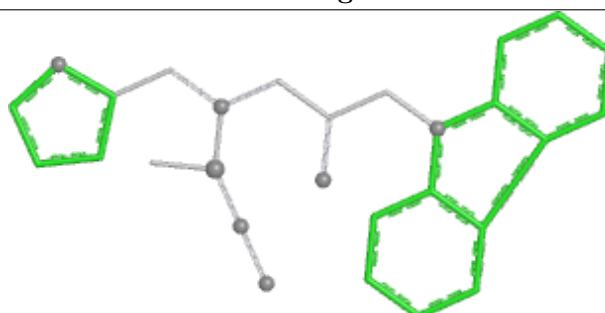
Bond lengths



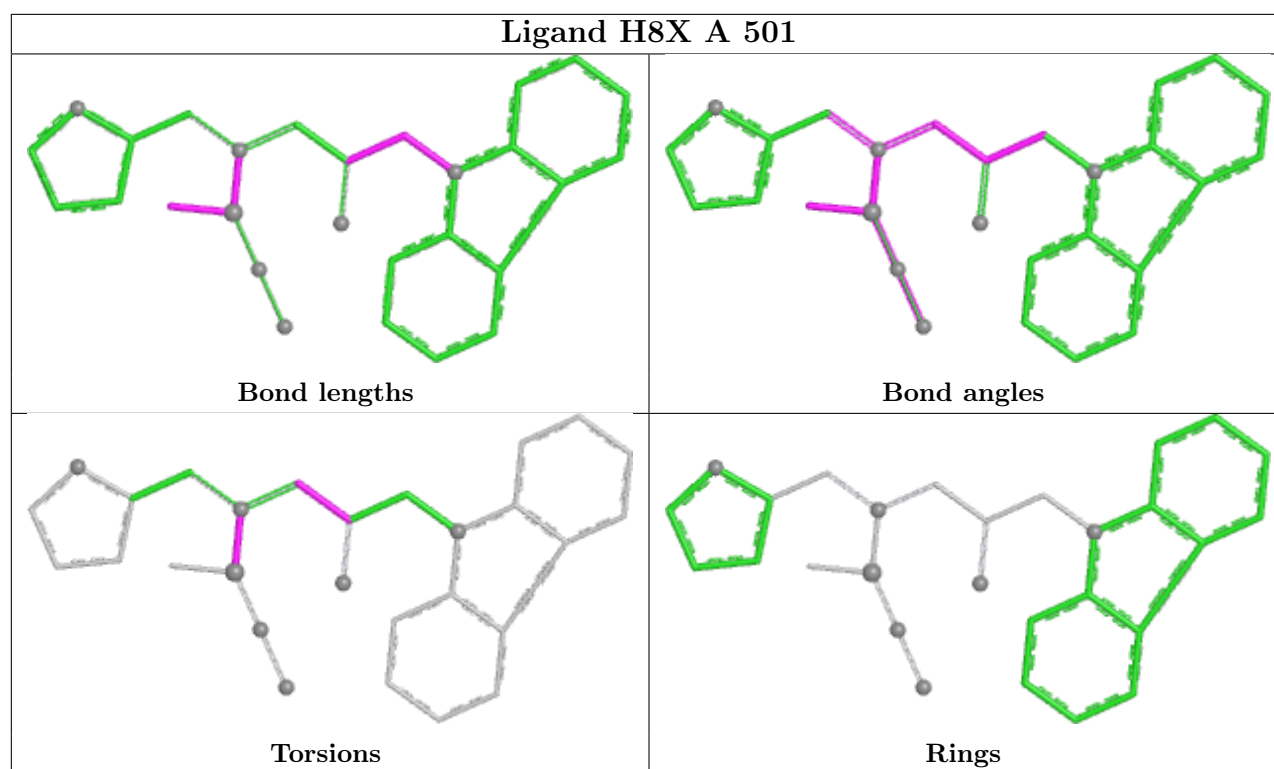
Bond angles



Torsions



Rings



5.7 Other polymers [i](#)

There are no such residues in this entry.

5.8 Polymer linkage issues [i](#)

There are no chain breaks in this entry.

6 Fit of model and data

6.1 Protein, DNA and RNA chains

In the following table, the column labelled ‘#RSRZ > 2’ contains the number (and percentage) of RSRZ outliers, followed by percent RSRZ outliers for the chain as percentile scores relative to all X-ray entries and entries of similar resolution. The OWAB column contains the minimum, median, 95th percentile and maximum values of the occupancy-weighted average B-factor per residue. The column labelled ‘Q < 0.9’ lists the number of (and percentage) of residues with an average occupancy less than 0.9.

Mol	Chain	Analysed	<RSRZ>	#RSRZ>2	OWAB(Å ²)	Q<0.9
1	A	472/498 (94%)	-0.01	10 (2%) 63 60	18, 30, 51, 66	1 (0%)
1	B	475/498 (95%)	-0.11	11 (2%) 61 58	14, 28, 49, 77	0
1	C	476/498 (95%)	-0.05	14 (2%) 53 50	15, 29, 52, 65	0
All	All	1423/1494 (95%)	-0.06	35 (2%) 58 55	14, 29, 51, 77	1 (0%)

All (35) RSRZ outliers are listed below:

Mol	Chain	Res	Type	RSRZ
1	C	47	VAL	5.3
1	B	203	ASP	4.2
1	B	279	ASN	3.4
1	A	406	PHE	3.4
1	A	241	ALA	3.3
1	C	230	TRP	3.3
1	C	45	SER	3.1
1	A	231	VAL	3.1
1	B	39	PRO	3.1
1	A	184	ASP	3.0
1	C	279	ASN	2.9
1	A	230	TRP	2.8
1	B	239	MET	2.6
1	C	42	ALA	2.5
1	B	202	THR	2.5
1	C	422	THR	2.5
1	B	241	ALA	2.5
1	B	490	GLN	2.5
1	B	488	TYR	2.4
1	C	276	VAL	2.4
1	A	229	ALA	2.4
1	C	281	SER	2.4
1	C	164	GLU	2.4

Continued on next page...

Continued from previous page...

Mol	Chain	Res	Type	RSRZ
1	C	204	GLY	2.3
1	B	207	SER	2.3
1	B	82	ASP	2.3
1	B	201	ASP	2.3
1	C	185	ASP	2.3
1	C	203	ASP	2.3
1	A	236	ARG	2.2
1	C	421	ARG	2.2
1	A	94	THR	2.1
1	C	492	SER	2.1
1	A	235	GLU	2.0
1	A	238	ARG	2.0

6.2 Non-standard residues in protein, DNA, RNA chains [i](#)

There are no non-standard protein/DNA/RNA residues in this entry.

6.3 Carbohydrates [i](#)

There are no oligosaccharides in this entry.

6.4 Ligands [i](#)

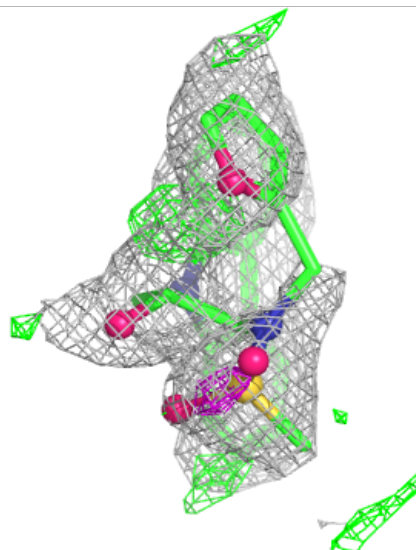
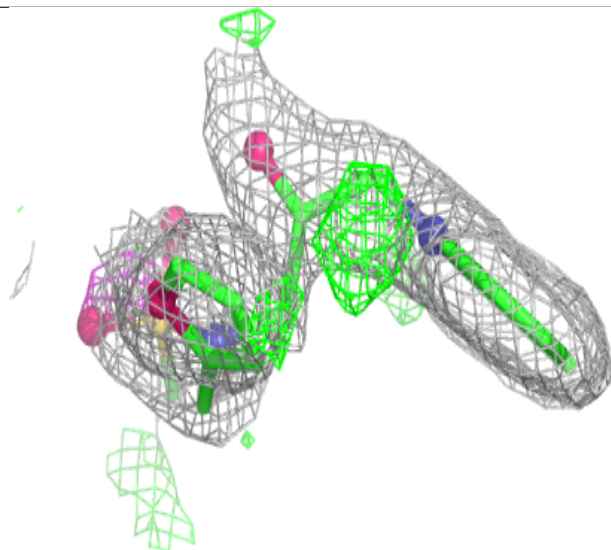
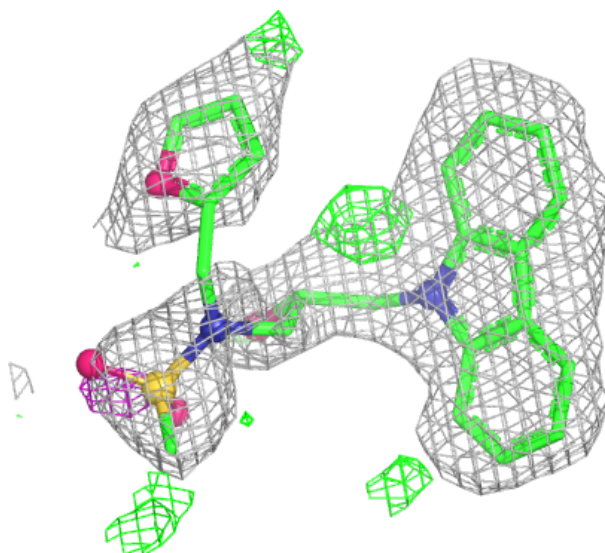
In the following table, the Atoms column lists the number of modelled atoms in the group and the number defined in the chemical component dictionary. The B-factors column lists the minimum, median, 95th percentile and maximum values of B factors of atoms in the group. The column labelled 'Q< 0.9' lists the number of atoms with occupancy less than 0.9.

Mol	Type	Chain	Res	Atoms	RSCC	RSR	B-factors(\AA^2)	Q<0.9
2	H8X	B	501	28/28	0.81	0.15	18,26,46,59	28
2	H8X	A	501	28/28	0.86	0.14	20,35,60,65	0
2	H8X	C	502	28/28	0.89	0.11	20,27,33,40	28
3	EDO	C	501	4/4	0.96	0.07	27,30,33,40	0

The following is a graphical depiction of the model fit to experimental electron density of all instances of the Ligand of Interest. In addition, ligands with molecular weight > 250 and outliers as shown on the geometry validation Tables will also be included. Each fit is shown from different orientation to approximate a three-dimensional view.

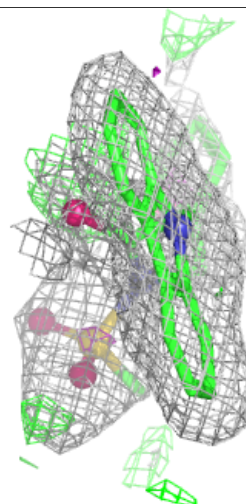
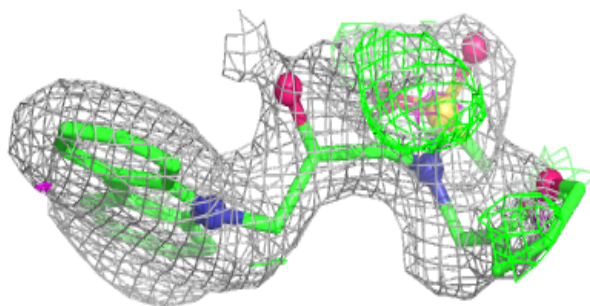
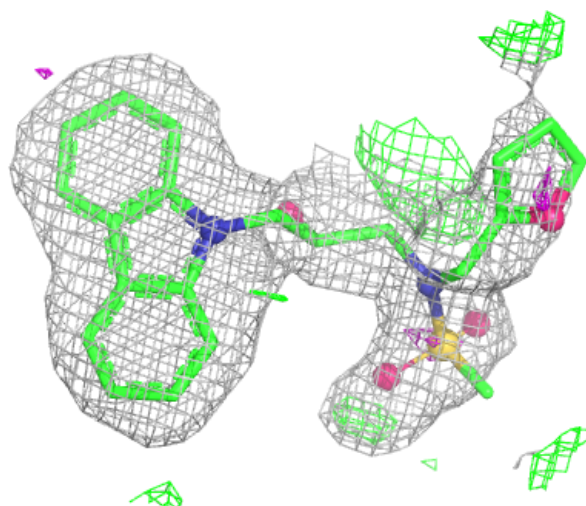
Electron density around H8X B 501:

$2mF_o-DF_c$ (at 0.7 rmsd) in gray
 mF_o-DF_c (at 3 rmsd) in purple (negative)
and green (positive)



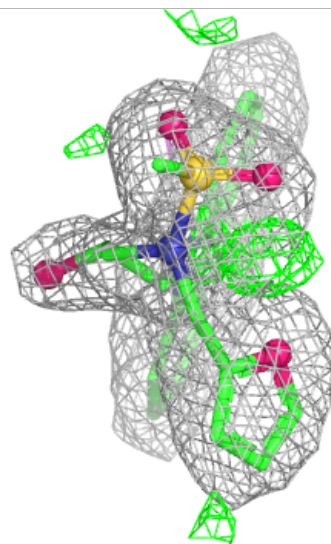
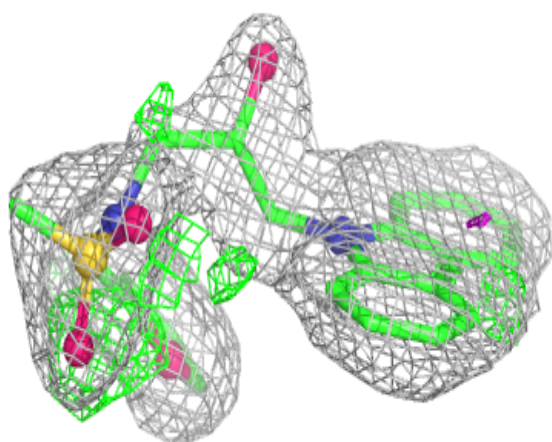
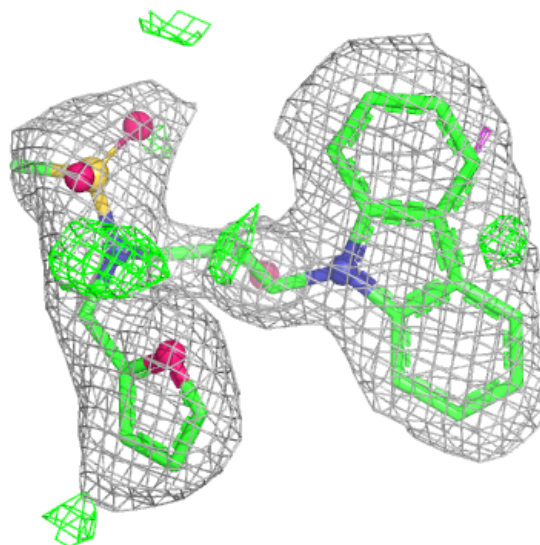
Electron density around H8X A 501:

$2mF_o-DF_c$ (at 0.7 rmsd) in gray
 mF_o-DF_c (at 3 rmsd) in purple (negative)
and green (positive)



Electron density around H8X C 502:

$2mF_o-DF_c$ (at 0.7 rmsd) in gray
 mF_o-DF_c (at 3 rmsd) in purple (negative)
and green (positive)



6.5 Other polymers [i](#)

There are no such residues in this entry.