



# Full wwPDB X-ray Structure Validation Report ⓘ

Mar 9, 2026 – 03:09 PM UTC

PDB ID : 7E38 / pdb\_00007e38  
Title : Crystal structure of deoxypodophyllotoxin synthase from *Sinopodophyllum hexandrum* in complex with yatein and succinate  
Authors : Wu, M.-H.; Chang, W.-c.; Chien, T.-C.; Chan, N.-L.  
Deposited on : 2021-02-08  
Resolution : 2.05 Å(reported)

This is a Full wwPDB X-ray Structure Validation Report for a publicly released PDB entry.

We welcome your comments at [validation@mail.wwpdb.org](mailto:validation@mail.wwpdb.org)

A user guide is available at

<https://www.wwpdb.org/validation/2017/XrayValidationReportHelp>

with specific help available everywhere you see the ⓘ symbol.

The types of validation reports are described at

<http://www.wwpdb.org/validation/2017/FAQs#types>.

---

The following versions of software and data (see [references ⓘ](#)) were used in the production of this report:

MolProbity	:	4-5-2 with Phenix2.0
Mogul	:	2022.3.0, CSD as543be (2022)
Xtriage (Phenix)	:	2.0
EDS	:	3.0
Buster-report	:	wwPDB partial adaption of 1.1.7 (2018)
Percentile statistics	:	20250101.v01 (using entries in the PDB archive January 1st 2025)
CCP4	:	9.0.010 (Gargrove)
Density-Fitness	:	1.0.12
Ideal geometry (proteins)	:	Engh & Huber (2001)
Ideal geometry (DNA, RNA)	:	Parkinson et al. (1996)
Validation Pipeline (wwPDB-VP)	:	2.49

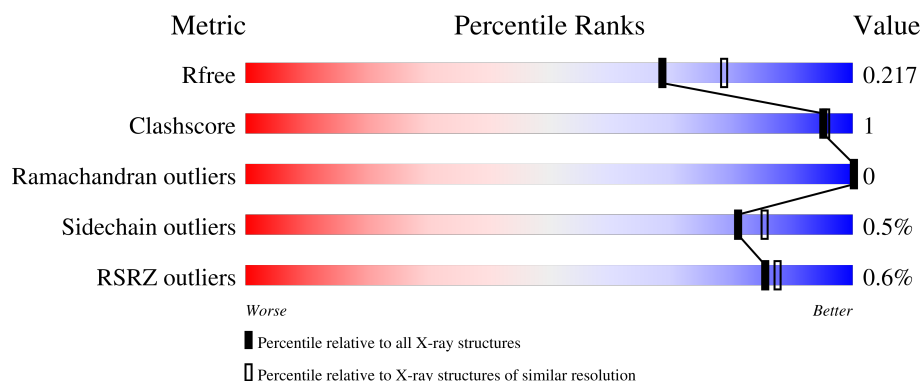
# 1 Overall quality at a glance

The following experimental techniques were used to determine the structure:

*X-RAY DIFFRACTION*

The reported resolution of this entry is 2.05 Å.

Percentile scores (ranging between 0-100) for global validation metrics of the entry are shown in the following graphic. The table shows the number of entries on which the scores are based.



Metric	Whole archive (#Entries)	Similar resolution (#Entries, resolution range(Å))
$R_{free}$	180053	2260 (2.04-2.04)
Clashscore	190562	2333 (2.04-2.04)
Ramachandran outliers	187476	2318 (2.04-2.04)
Sidechain outliers	187428	2318 (2.04-2.04)
RSRZ outliers	180081	2260 (2.04-2.04)

The table below summarises the geometric issues observed across the polymeric chains and their fit to the electron density. The red, orange, yellow and green segments of the lower bar indicate the fraction of residues that contain outliers for  $\geq 3$ , 2, 1 and 0 types of geometric quality criteria respectively. A grey segment represents the fraction of residues that are not modelled. The numeric value for each fraction is indicated below the corresponding segment, with a dot representing fractions  $\leq 5\%$ . The upper red bar (where present) indicates the fraction of residues that have poor fit to the electron density. The numeric value is given above the bar.

Mol	Chain	Length	Quality of chain
1	A	318	<div> <div>%</div> <div> <div></div> <div>94%</div> <div></div> </div> </div>
1	B	318	<div> <div>%</div> <div> <div></div> <div>92%</div> <div></div> </div> </div>

## 2 Entry composition

There are 6 unique types of molecules in this entry. The entry contains 5552 atoms, of which 0 are hydrogens and 0 are deuteriums.

In the tables below, the ZeroOcc column contains the number of atoms modelled with zero occupancy, the AltConf column contains the number of residues with at least one atom in alternate conformation and the Trace column contains the number of residues modelled with at most 2 atoms.

- Molecule 1 is a protein called Deoxypodophyllotoxin synthase.

Mol	Chain	Residues	Atoms					ZeroOcc	AltConf	Trace
1	A	313	Total	C	N	O	S	0	3	0
			2517	1601	426	473	17			
1	B	305	Total	C	N	O	S	0	3	0
			2450	1558	416	460	16			

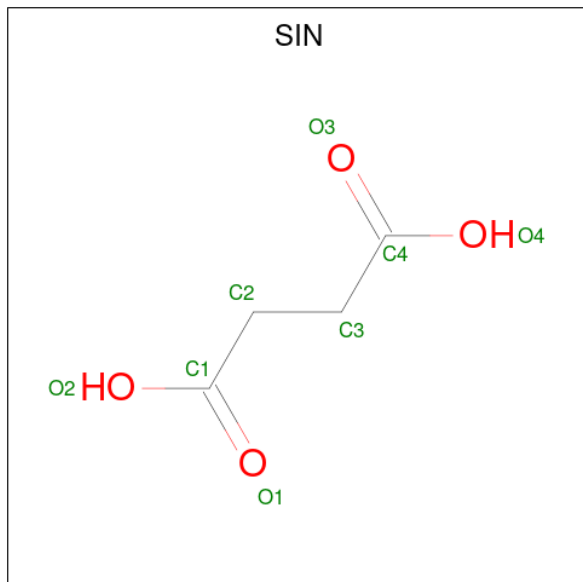
There are 16 discrepancies between the modelled and reference sequences:

Chain	Residue	Modelled	Actual	Comment	Reference
A	311	LEU	-	expression tag	UNP A0A0N9HQ36
A	312	GLU	-	expression tag	UNP A0A0N9HQ36
A	313	HIS	-	expression tag	UNP A0A0N9HQ36
A	314	HIS	-	expression tag	UNP A0A0N9HQ36
A	315	HIS	-	expression tag	UNP A0A0N9HQ36
A	316	HIS	-	expression tag	UNP A0A0N9HQ36
A	317	HIS	-	expression tag	UNP A0A0N9HQ36
A	318	HIS	-	expression tag	UNP A0A0N9HQ36
B	311	LEU	-	expression tag	UNP A0A0N9HQ36
B	312	GLU	-	expression tag	UNP A0A0N9HQ36
B	313	HIS	-	expression tag	UNP A0A0N9HQ36
B	314	HIS	-	expression tag	UNP A0A0N9HQ36
B	315	HIS	-	expression tag	UNP A0A0N9HQ36
B	316	HIS	-	expression tag	UNP A0A0N9HQ36
B	317	HIS	-	expression tag	UNP A0A0N9HQ36
B	318	HIS	-	expression tag	UNP A0A0N9HQ36

- Molecule 2 is FE (III) ION (CCD ID: FE) (formula: Fe).

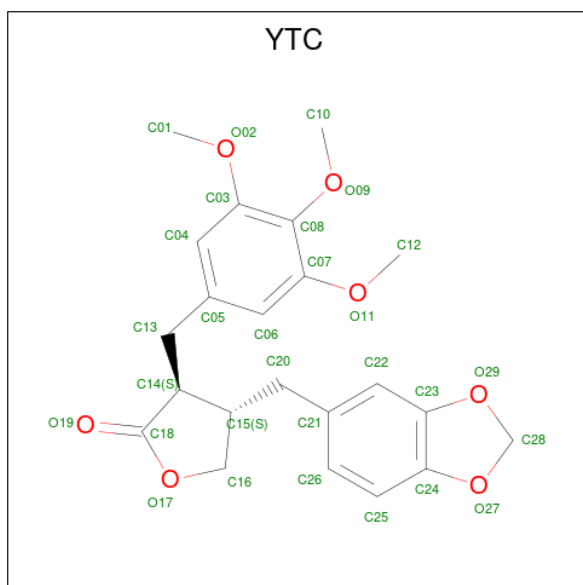
Mol	Chain	Residues	Atoms		ZeroOcc	AltConf
2	A	1	Total	Fe	0	0
			1	1		
2	B	1	Total	Fe	0	0
			1	1		

- Molecule 3 is SUCCINIC ACID (CCD ID: SIN) (formula:  $C_4H_6O_4$ ) (labeled as "Ligand of Interest" by depositor).



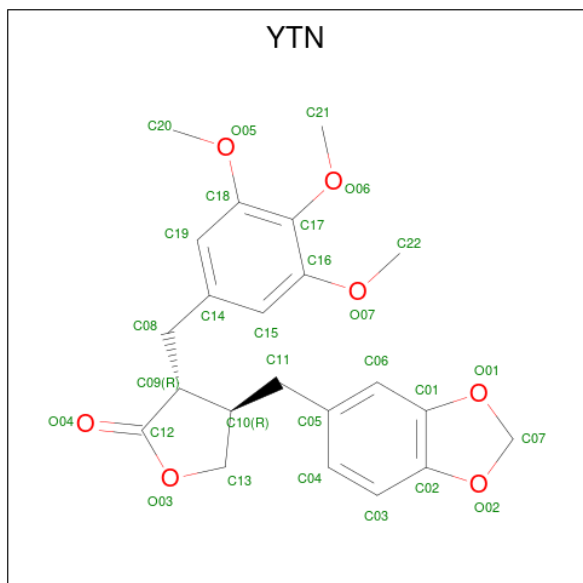
Mol	Chain	Residues	Atoms			ZeroOcc	AltConf
3	A	1	Total	C	O	0	0
			8	4	4		
3	B	1	Total	C	O	0	0
			8	4	4		

- Molecule 4 is (3 {S},4 {S})-4-(1,3-benzodioxol-5-ylmethyl)-3-[(3,4,5-trimethoxyphenyl)methyl]oxolan-2-one (CCD ID: YTC) (formula:  $C_{22}H_{24}O_7$ ) (labeled as "Ligand of Interest" by depositor).



Mol	Chain	Residues	Atoms			ZeroOcc	AltConf
4	A	1	Total	C	O	0	1
			29	22	7		
4	B	1	Total	C	O	0	1
			29	22	7		

- Molecule 5 is (3 {R},4 {R})-4-(1,3-benzodioxol-5-ylmethyl)-3-[(3,4,5-trimethoxyphenyl)methyl]oxolan-2-one (CCD ID: YTN) (formula: C<sub>22</sub>H<sub>24</sub>O<sub>7</sub>) (labeled as "Ligand of Interest" by depositor).



Mol	Chain	Residues	Atoms			ZeroOcc	AltConf
5	A	1	Total	C	O	0	1
			29	22	7		
5	B	1	Total	C	O	0	1
			29	22	7		

- Molecule 6 is water.

Mol	Chain	Residues	Atoms		ZeroOcc	AltConf
6	A	231	Total	O	0	0
			231	231		
6	B	220	Total	O	0	0
			220	220		

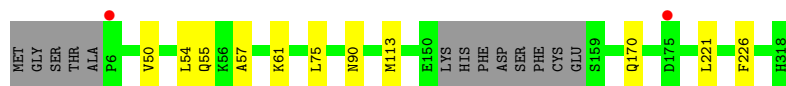
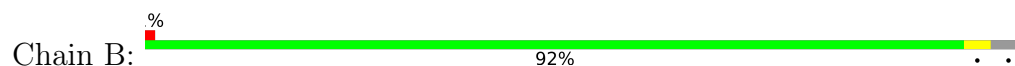
### 3 Residue-property plots [i](#)

These plots are drawn for all protein, RNA, DNA and oligosaccharide chains in the entry. The first graphic for a chain summarises the proportions of the various outlier classes displayed in the second graphic. The second graphic shows the sequence view annotated by issues in geometry and electron density. Residues are color-coded according to the number of geometric quality criteria for which they contain at least one outlier: green = 0, yellow = 1, orange = 2 and red = 3 or more. A red dot above a residue indicates a poor fit to the electron density ( $RSRZ > 2$ ). Stretches of 2 or more consecutive residues without any outlier are shown as a green connector. Residues present in the sample, but not in the model, are shown in grey.

- Molecule 1: Deoxypodophyllotoxin synthase



- Molecule 1: Deoxypodophyllotoxin synthase



## 4 Data and refinement statistics

Property	Value	Source
Space group	P 31 2 1	Depositor
Cell constants a, b, c, $\alpha$ , $\beta$ , $\gamma$	100.76Å 100.76Å 172.60Å 90.00° 90.00° 120.00°	Depositor
Resolution (Å)	19.89 – 2.05 19.89 – 2.05	Depositor EDS
% Data completeness (in resolution range)	97.2 (19.89-2.05) 97.1 (19.89-2.05)	Depositor EDS
$R_{merge}$	(Not available)	Depositor
$R_{sym}$	0.10	Depositor
$\langle I/\sigma(I) \rangle$ <sup>1</sup>	3.79 (at 2.06Å)	Xtriage
Refinement program	PHENIX 1.19rc4_4035	Depositor
R, $R_{free}$	0.180 , 0.217 0.179 , 0.217	Depositor DCC
$R_{free}$ test set	1995 reflections (3.09%)	wwPDB-VP
Wilson B-factor (Å <sup>2</sup> )	22.2	Xtriage
Anisotropy	0.450	Xtriage
Bulk solvent $k_{sol}$ (e/Å <sup>3</sup> ), $B_{sol}$ (Å <sup>2</sup> )	0.40 , 43.3	EDS
L-test for twinning <sup>2</sup>	$\langle  L  \rangle = 0.50$ , $\langle L^2 \rangle = 0.33$	Xtriage
Estimated twinning fraction	0.019 for -h,-k,l	Xtriage
$F_o, F_c$ correlation	0.95	EDS
Total number of atoms	5552	wwPDB-VP
Average B, all atoms (Å <sup>2</sup> )	24.0	wwPDB-VP

Xtriage's analysis on translational NCS is as follows: *The largest off-origin peak in the Patterson function is 3.12% of the height of the origin peak. No significant pseudotranslation is detected.*

<sup>1</sup>Intensities estimated from amplitudes.

<sup>2</sup>Theoretical values of  $\langle |L| \rangle$ ,  $\langle L^2 \rangle$  for acentric reflections are 0.5, 0.333 respectively for untwinned datasets, and 0.375, 0.2 for perfectly twinned datasets.

## 5 Model quality

### 5.1 Standard geometry

Bond lengths and bond angles in the following residue types are not validated in this section: YTN, YTC, SIN, FE

The Z score for a bond length (or angle) is the number of standard deviations the observed value is removed from the expected value. A bond length (or angle) with  $|Z| > 5$  is considered an outlier worth inspection. RMSZ is the root-mean-square of all Z scores of the bond lengths (or angles).

Mol	Chain	Bond lengths		Bond angles	
		RMSZ	# Z  >5	RMSZ	# Z  >5
1	A	0.11	0/2589	0.28	0/3503
1	B	0.11	0/2518	0.30	0/3408
All	All	0.11	0/5107	0.29	0/6911

There are no bond length outliers.

There are no bond angle outliers.

There are no chirality outliers.

There are no planarity outliers.

### 5.2 Too-close contacts

In the following table, the Non-H and H(model) columns list the number of non-hydrogen atoms and hydrogen atoms in the chain respectively. The H(added) column lists the number of hydrogen atoms added and optimized by MolProbity. The Clashes column lists the number of clashes within the asymmetric unit, whereas Symm-Clashes lists symmetry-related clashes.

Mol	Chain	Non-H	H(model)	H(added)	Clashes	Symm-Clashes
1	A	2517	0	2463	7	0
1	B	2450	0	2407	5	0
2	A	1	0	0	0	0
2	B	1	0	0	0	0
3	A	8	0	4	0	0
3	B	8	0	4	0	0
4	A	29	0	0	0	0
4	B	29	0	0	0	0
5	A	29	0	0	0	0
5	B	29	0	0	0	0
6	A	231	0	0	0	0

*Continued on next page...*



*Continued from previous page...*

Mol	Chain	Non-H	H(model)	H(added)	Clashes	Symm-Clashes
6	B	220	0	0	0	0
All	All	5552	0	4878	12	0

The all-atom clashscore is defined as the number of clashes found per 1000 atoms (including hydrogen atoms). The all-atom clashscore for this structure is 1.

All (12) close contacts within the same asymmetric unit are listed below, sorted by their clash magnitude.

Atom-1	Atom-2	Interatomic distance (Å)	Clash overlap (Å)
1:B:75:LEU:HB2	1:B:113:MET:HE1	1.87	0.55
1:B:50:VAL:HG13	1:B:54:LEU:HD23	1.93	0.49
1:A:132:MET:HE2	1:A:192:ILE:HG21	1.94	0.48
1:A:260:ASP:OD1	1:A:261:ILE:N	2.47	0.48
1:B:90:ASN:HA	1:B:170:GLN:HE21	1.81	0.46
1:B:57:ALA:O	1:B:61:LYS:HG2	2.16	0.46
1:A:281:GLU:OE1	1:A:283:THR:OG1	2.24	0.44
1:A:258:PRO:HG3	1:A:262:ILE:HG12	1.99	0.43
1:A:80:PRO:HB3	1:A:86:THR:HG23	1.99	0.42
1:A:138:ILE:O	1:A:142:MET:HG3	2.19	0.42
1:A:192:ILE:HG12	1:A:220:VAL:HG22	2.04	0.40
1:B:50:VAL:HG12	1:B:55[B]:GLN:HG3	2.02	0.40

There are no symmetry-related clashes.

## 5.3 Torsion angles ⓘ

### 5.3.1 Protein backbone ⓘ

In the following table, the Percentiles column shows the percent Ramachandran outliers of the chain as a percentile score with respect to all X-ray entries followed by that with respect to entries of similar resolution.

The Analysed column shows the number of residues for which the backbone conformation was analysed, and the total number of residues.

Mol	Chain	Analysed	Favoured	Allowed	Outliers	Percentiles	
1	A	314/318 (99%)	308 (98%)	6 (2%)	0	100	100
1	B	304/318 (96%)	299 (98%)	5 (2%)	0	100	100
All	All	618/636 (97%)	607 (98%)	11 (2%)	0	100	100

There are no Ramachandran outliers to report.

### 5.3.2 Protein sidechains ⓘ

In the following table, the Percentiles column shows the percent sidechain outliers of the chain as a percentile score with respect to all X-ray entries followed by that with respect to entries of similar resolution.

The Analysed column shows the number of residues for which the sidechain conformation was analysed, and the total number of residues.

Mol	Chain	Analysed	Rotameric	Outliers	Percentiles	
1	A	281/281 (100%)	280 (100%)	1 (0%)	84	88
1	B	273/281 (97%)	271 (99%)	2 (1%)	76	80
All	All	554/562 (99%)	551 (100%)	3 (0%)	81	85

All (3) residues with a non-rotameric sidechain are listed below:

Mol	Chain	Res	Type
1	A	226	PHE
1	B	221	LEU
1	B	226	PHE

Sometimes sidechains can be flipped to improve hydrogen bonding and reduce clashes. All (5) such sidechains are listed below:

Mol	Chain	Res	Type
1	A	170	GLN
1	A	217	ASN
1	A	247	GLN
1	B	170	GLN
1	B	217	ASN

### 5.3.3 RNA ⓘ

There are no RNA molecules in this entry.

## 5.4 Non-standard residues in protein, DNA, RNA chains ⓘ

There are no non-standard protein/DNA/RNA residues in this entry.

## 5.5 Carbohydrates [i](#)

There are no oligosaccharides in this entry.

## 5.6 Ligand geometry [i](#)

Of 8 ligands modelled in this entry, 2 are monoatomic - leaving 6 for Mogul analysis.

In the following table, the Counts columns list the number of bonds (or angles) for which Mogul statistics could be retrieved, the number of bonds (or angles) that are observed in the model and the number of bonds (or angles) that are defined in the Chemical Component Dictionary. The Link column lists molecule types, if any, to which the group is linked. The Z score for a bond length (or angle) is the number of standard deviations the observed value is removed from the expected value. A bond length (or angle) with  $|Z| > 2$  is considered an outlier worth inspection. RMSZ is the root-mean-square of all Z scores of the bond lengths (or angles).

Mol	Type	Chain	Res	Link	Bond lengths			Bond angles		
					Counts	RMSZ	# $ Z  > 2$	Counts	RMSZ	# $ Z  > 2$
3	SIN	B	402	2	7,7,7	1.16	0	8,8,8	1.51	1 (12%)
5	YTN	B	404[B]	-	32,32,32	1.77	9 (28%)	44,45,45	1.65	11 (25%)
4	YTC	A	403[A]	-	32,32,32	1.73	8 (25%)	44,45,45	1.58	10 (22%)
4	YTC	B	403[A]	-	32,32,32	1.72	7 (21%)	44,45,45	1.62	11 (25%)
5	YTN	A	404[B]	-	32,32,32	1.77	8 (25%)	44,45,45	1.63	11 (25%)
3	SIN	A	402	2	7,7,7	1.15	0	8,8,8	1.42	1 (12%)

In the following table, the Chirals column lists the number of chiral outliers, the number of chiral centers analysed, the number of these observed in the model and the number defined in the Chemical Component Dictionary. Similar counts are reported in the Torsion and Rings columns. '-' means no outliers of that kind were identified.

Mol	Type	Chain	Res	Link	Chirals	Torsions	Rings
3	SIN	B	402	2	-	2/5/5/5	-
5	YTN	B	404[B]	-	-	5/14/33/33	0/4/4/4
4	YTC	A	403[A]	-	-	4/14/33/33	0/4/4/4
4	YTC	B	403[A]	-	-	4/14/33/33	0/4/4/4
5	YTN	A	404[B]	-	-	5/14/33/33	0/4/4/4
3	SIN	A	402	2	-	2/5/5/5	-

All (32) bond length outliers are listed below:

Mol	Chain	Res	Type	Atoms	Z	Observed(Å)	Ideal(Å)
5	B	404[B]	YTN	O03-C12	5.94	1.47	1.35

*Continued on next page...*

*Continued from previous page...*

Mol	Chain	Res	Type	Atoms	Z	Observed(Å)	Ideal(Å)
5	A	404[B]	YTN	O03-C12	5.88	1.47	1.35
4	A	403[A]	YTC	O17-C18	5.88	1.47	1.35
4	B	403[A]	YTC	O17-C18	5.84	1.47	1.35
5	A	404[B]	YTN	C09-C10	-2.50	1.48	1.54
5	B	404[B]	YTN	C09-C10	-2.50	1.48	1.54
5	B	404[B]	YTN	O03-C13	-2.50	1.40	1.45
4	B	403[A]	YTC	C14-C18	-2.48	1.47	1.51
5	A	404[B]	YTN	O03-C13	-2.47	1.40	1.45
4	B	403[A]	YTC	O17-C16	-2.46	1.40	1.45
4	A	403[A]	YTC	O17-C16	-2.41	1.41	1.45
4	A	403[A]	YTC	O27-C24	2.41	1.42	1.38
5	B	404[B]	YTN	O01-C01	2.39	1.42	1.38
5	A	404[B]	YTN	O01-C01	2.39	1.42	1.38
5	A	404[B]	YTN	O02-C02	2.37	1.42	1.38
4	A	403[A]	YTC	O29-C23	2.36	1.42	1.38
4	B	403[A]	YTC	O29-C23	2.34	1.42	1.38
5	A	404[B]	YTN	C08-C09	2.32	1.57	1.54
4	B	403[A]	YTC	C14-C15	-2.31	1.49	1.54
4	A	403[A]	YTC	C14-C18	-2.31	1.48	1.51
4	A	403[A]	YTC	C14-C15	-2.30	1.49	1.54
5	B	404[B]	YTN	O02-C02	2.28	1.41	1.38
4	B	403[A]	YTC	O27-C24	2.25	1.41	1.38
5	B	404[B]	YTN	C09-C12	-2.22	1.48	1.51
5	A	404[B]	YTN	C09-C12	-2.20	1.48	1.51
5	B	404[B]	YTN	C08-C09	2.17	1.57	1.54
5	A	404[B]	YTN	O07-C16	2.15	1.40	1.37
4	A	403[A]	YTC	O11-C07	2.10	1.40	1.37
4	A	403[A]	YTC	O02-C03	2.04	1.40	1.37
5	B	404[B]	YTN	O05-C18	2.01	1.40	1.37
4	B	403[A]	YTC	O02-C03	2.00	1.40	1.37
5	B	404[B]	YTN	O07-C16	2.00	1.40	1.37

All (45) bond angle outliers are listed below:

Mol	Chain	Res	Type	Atoms	Z	Observed(°)	Ideal(°)
4	B	403[A]	YTC	O17-C18-O19	4.71	126.43	121.43
5	B	404[B]	YTN	O03-C12-O04	4.56	126.27	121.43
4	A	403[A]	YTC	O17-C18-O19	4.43	126.14	121.43
5	A	404[B]	YTN	O03-C12-O04	4.42	126.12	121.43
5	A	404[B]	YTN	C11-C10-C13	-3.22	108.21	112.66
5	B	404[B]	YTN	C11-C10-C13	-3.15	108.32	112.66
5	B	404[B]	YTN	O05-C18-C17	3.07	120.39	115.14

*Continued on next page...*

*Continued from previous page...*

Mol	Chain	Res	Type	Atoms	Z	Observed(°)	Ideal(°)
5	A	404[B]	YTN	O01-C01-C06	3.01	131.86	127.86
4	A	403[A]	YTC	O29-C23-C22	2.97	131.80	127.86
4	B	403[A]	YTC	C21-C20-C15	-2.86	109.14	113.61
5	B	404[B]	YTN	O03-C12-C09	-2.84	106.52	110.19
4	B	403[A]	YTC	O29-C23-C22	2.82	131.60	127.86
4	A	403[A]	YTC	C20-C15-C16	-2.79	108.80	112.66
4	B	403[A]	YTC	C16-C15-C14	2.77	105.72	101.42
5	B	404[B]	YTN	O01-C01-C06	2.77	131.54	127.86
5	A	404[B]	YTN	O03-C12-C09	-2.68	106.73	110.19
5	A	404[B]	YTN	O05-C18-C17	2.68	119.73	115.14
4	A	403[A]	YTC	C16-C15-C14	2.68	105.57	101.42
4	B	403[A]	YTC	O17-C18-C14	-2.67	106.73	110.19
5	B	404[B]	YTN	C14-C08-C09	2.59	119.60	113.67
4	A	403[A]	YTC	O17-C18-C14	-2.58	106.86	110.19
5	B	404[B]	YTN	O05-C18-C19	-2.53	119.71	124.08
5	A	404[B]	YTN	O07-C16-C17	2.53	119.47	115.14
3	A	402	SIN	C2-C3-C4	-2.52	106.98	113.67
5	A	404[B]	YTN	C14-C08-C09	2.52	119.43	113.67
4	B	403[A]	YTC	C20-C15-C16	-2.50	109.21	112.66
4	A	403[A]	YTC	O02-C03-C08	2.50	119.43	115.14
4	A	403[A]	YTC	C21-C20-C15	-2.42	109.82	113.61
4	B	403[A]	YTC	O02-C03-C08	2.42	119.28	115.14
5	A	404[B]	YTN	O05-C18-C19	-2.39	119.96	124.08
5	B	404[B]	YTN	C05-C11-C10	-2.37	109.90	113.61
4	B	403[A]	YTC	O11-C07-C08	2.33	119.12	115.14
5	A	404[B]	YTN	C20-O05-C18	-2.29	114.15	117.51
4	A	403[A]	YTC	O11-C07-C08	2.29	119.06	115.14
5	A	404[B]	YTN	C05-C11-C10	-2.28	110.05	113.61
3	B	402	SIN	C2-C3-C4	-2.21	107.80	113.67
4	A	403[A]	YTC	O27-C24-C25	2.18	131.93	127.72
5	B	404[B]	YTN	C20-O05-C18	-2.13	114.39	117.51
5	A	404[B]	YTN	O02-C02-C03	2.11	131.78	127.72
5	B	404[B]	YTN	C13-O03-C12	-2.09	108.23	110.31
4	B	403[A]	YTC	C13-C14-C18	-2.08	108.73	112.35
5	B	404[B]	YTN	O07-C16-C17	2.04	118.63	115.14
4	B	403[A]	YTC	O02-C03-C04	-2.03	120.59	124.08
4	A	403[A]	YTC	O02-C03-C04	-2.01	120.61	124.08
4	B	403[A]	YTC	O27-C24-C25	2.00	131.58	127.72

There are no chirality outliers.

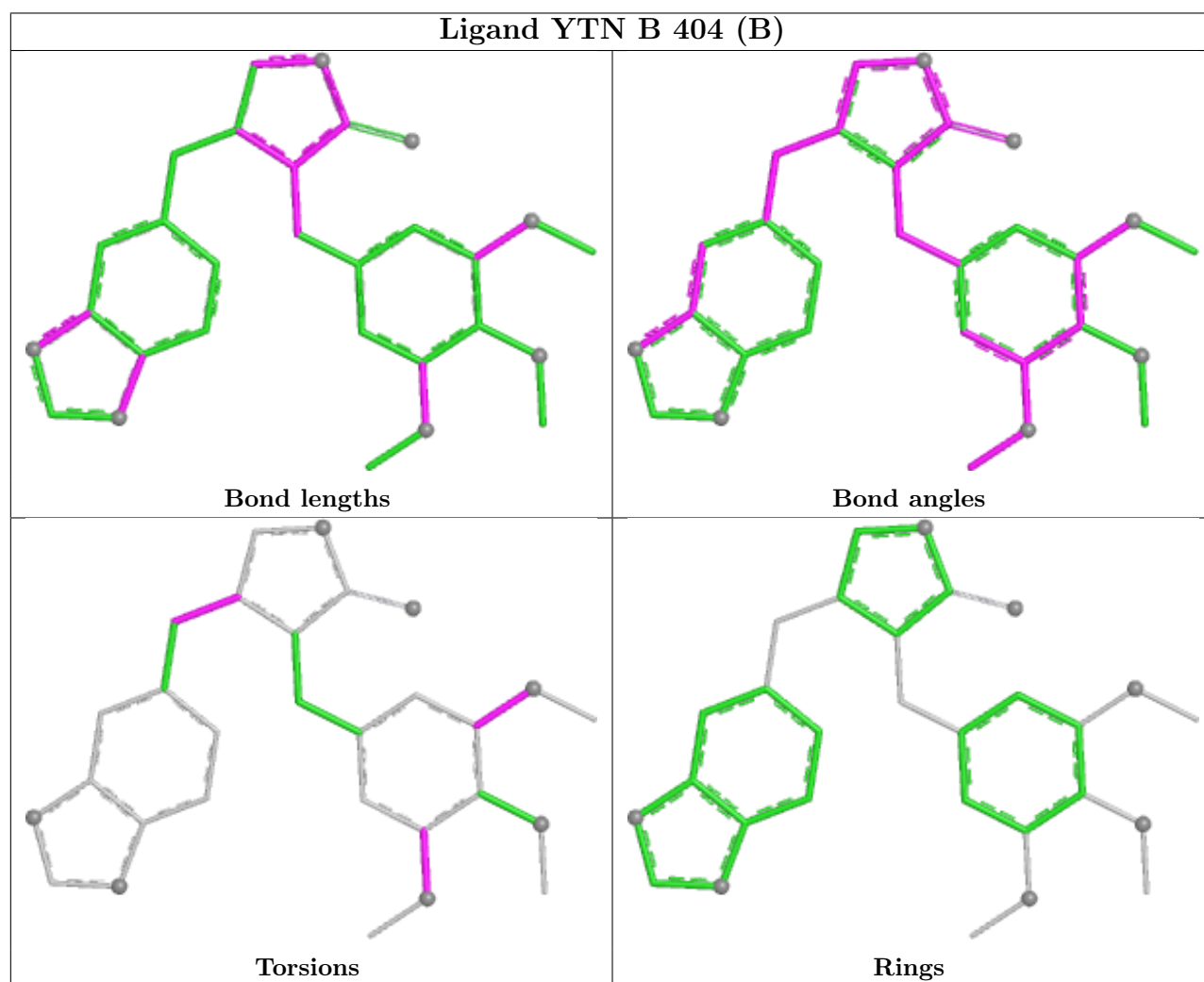
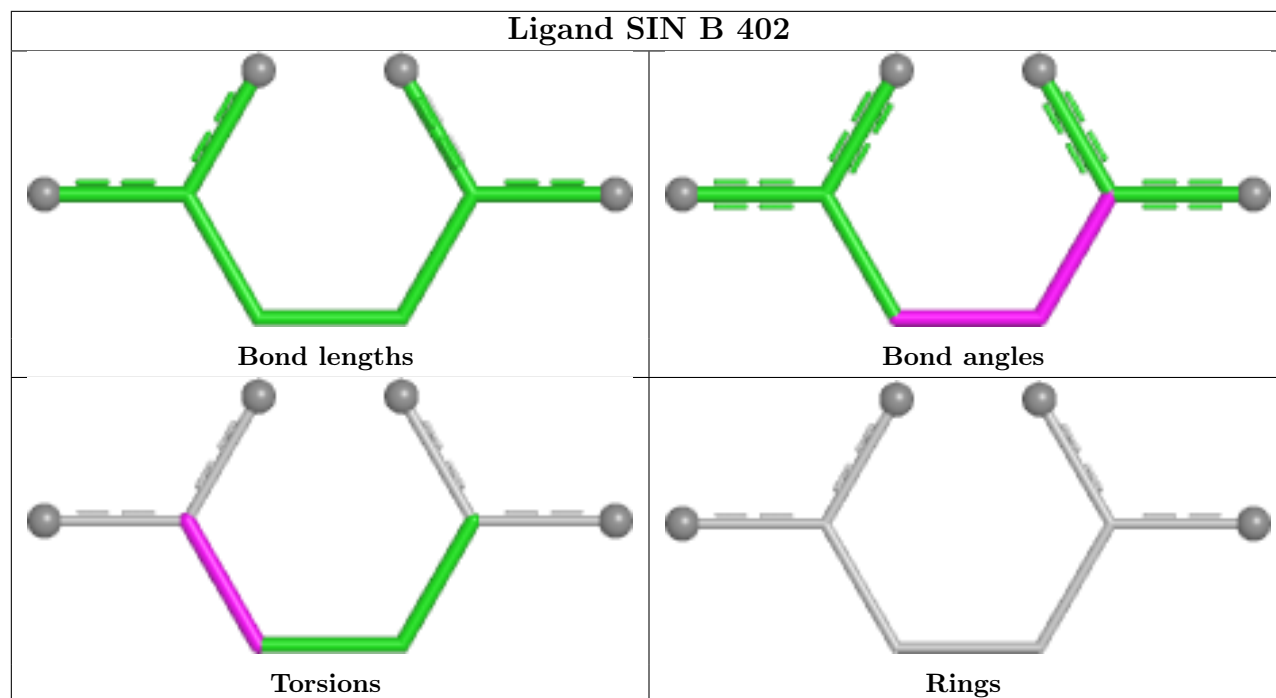
All (22) torsion outliers are listed below:

Mol	Chain	Res	Type	Atoms
4	A	403[A]	YTC	C05-C13-C14-C15
4	A	403[A]	YTC	C05-C13-C14-C18
4	B	403[A]	YTC	C05-C13-C14-C15
4	B	403[A]	YTC	C05-C13-C14-C18
5	A	404[B]	YTN	C09-C10-C11-C05
5	B	404[B]	YTN	C09-C10-C11-C05
5	B	404[B]	YTN	C17-C18-O05-C20
5	A	404[B]	YTN	C17-C18-O05-C20
5	B	404[B]	YTN	C19-C18-O05-C20
5	A	404[B]	YTN	C19-C18-O05-C20
4	A	403[A]	YTC	C08-C07-O11-C12
4	B	403[A]	YTC	C08-C03-O02-C01
5	B	404[B]	YTN	C17-C16-O07-C22
4	A	403[A]	YTC	C06-C07-O11-C12
4	B	403[A]	YTC	C04-C03-O02-C01
5	B	404[B]	YTN	C15-C16-O07-C22
3	B	402	SIN	O1-C1-C2-C3
3	B	402	SIN	O2-C1-C2-C3
3	A	402	SIN	O2-C1-C2-C3
3	A	402	SIN	O1-C1-C2-C3
5	A	404[B]	YTN	C09-C08-C14-C15
5	A	404[B]	YTN	C09-C08-C14-C19

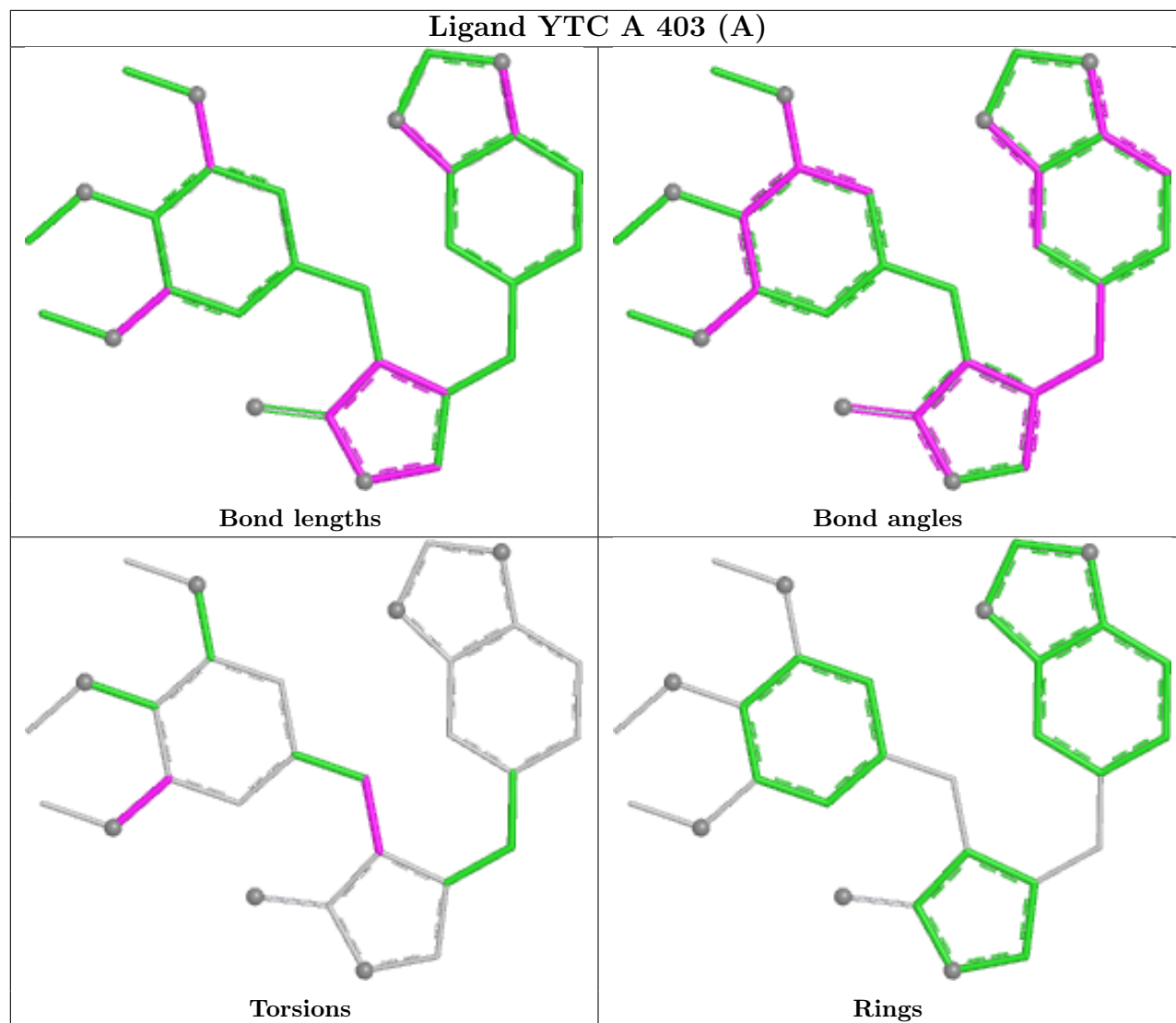
There are no ring outliers.

No monomer is involved in short contacts.

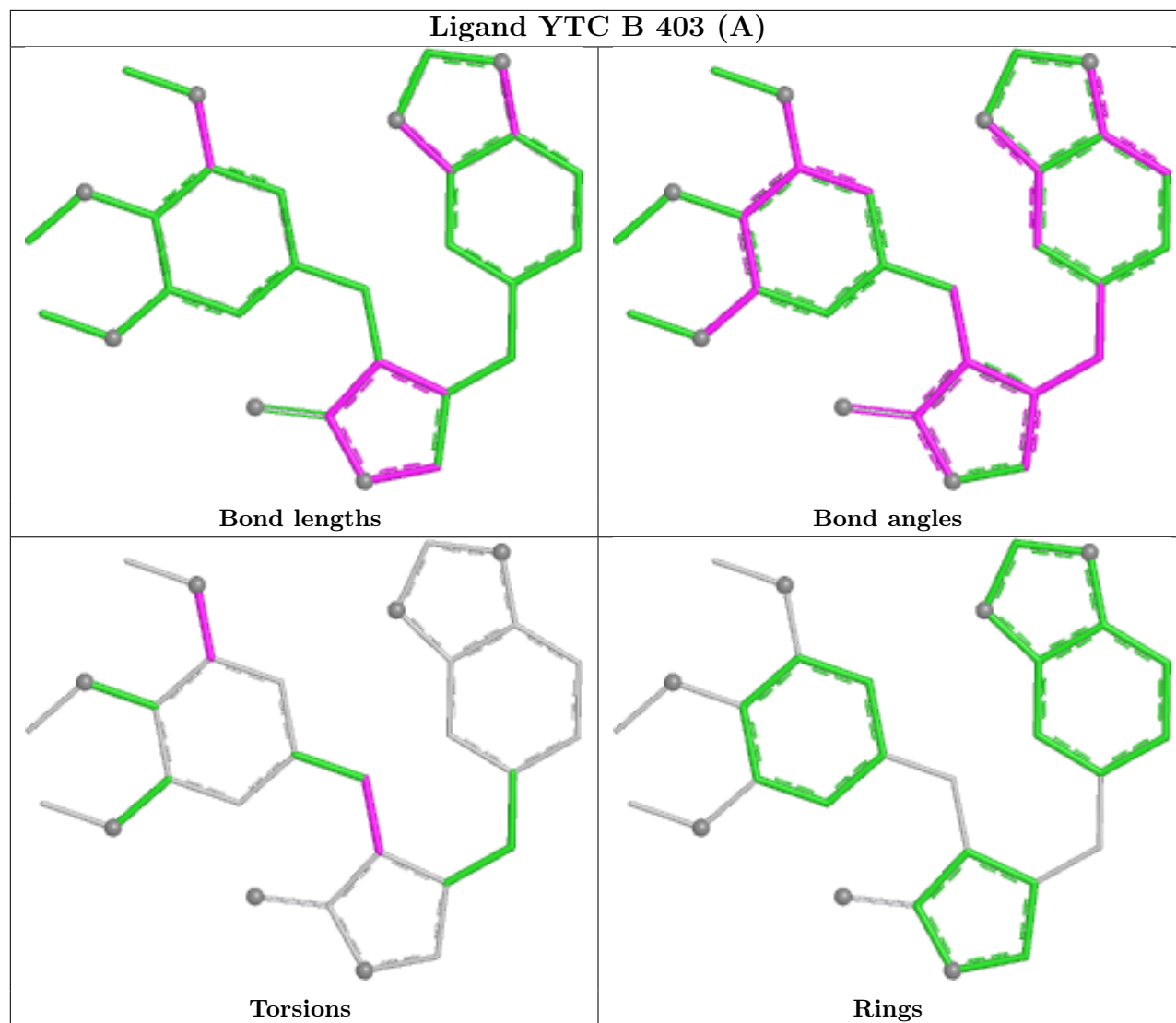
The following is a two-dimensional graphical depiction of Mogul quality analysis of bond lengths, bond angles, torsion angles, and ring geometry for all instances of the Ligand of Interest. In addition, ligands with molecular weight > 250 and outliers as shown on the validation Tables will also be included. For torsion angles, if less than 5% of the Mogul distribution of torsion angles is within 10 degrees of the torsion angle in question, then that torsion angle is considered an outlier. Any bond that is central to one or more torsion angles identified as an outlier by Mogul will be highlighted in the graph. For rings, the root-mean-square deviation (RMSD) between the ring in question and similar rings identified by Mogul is calculated over all ring torsion angles. If the average RMSD is greater than 60 degrees and the minimal RMSD between the ring in question and any Mogul-identified rings is also greater than 60 degrees, then that ring is considered an outlier. The outliers are highlighted in purple. The color gray indicates Mogul did not find sufficient equivalents in the CSD to analyse the geometry.



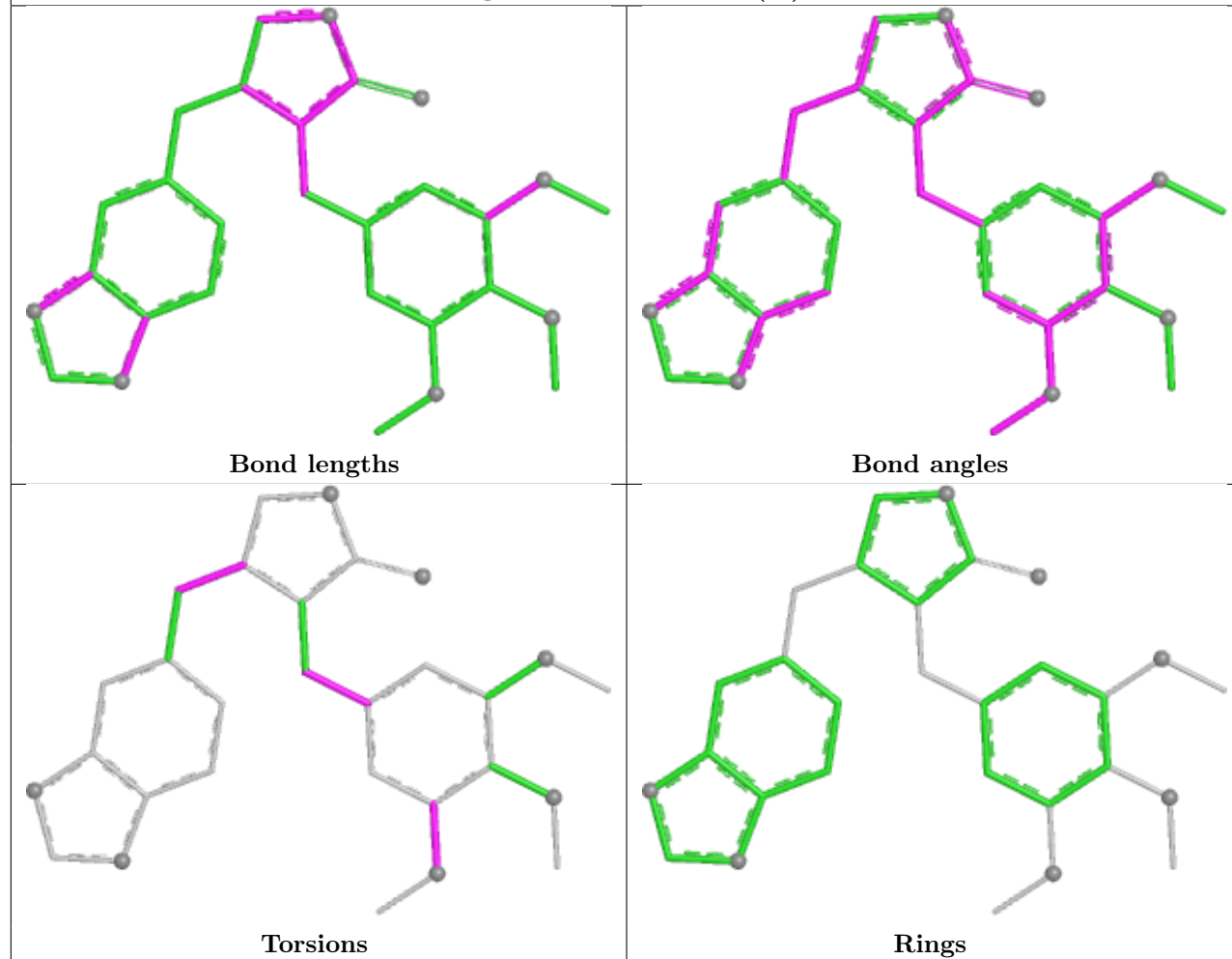
## Ligand YTC A 403 (A)



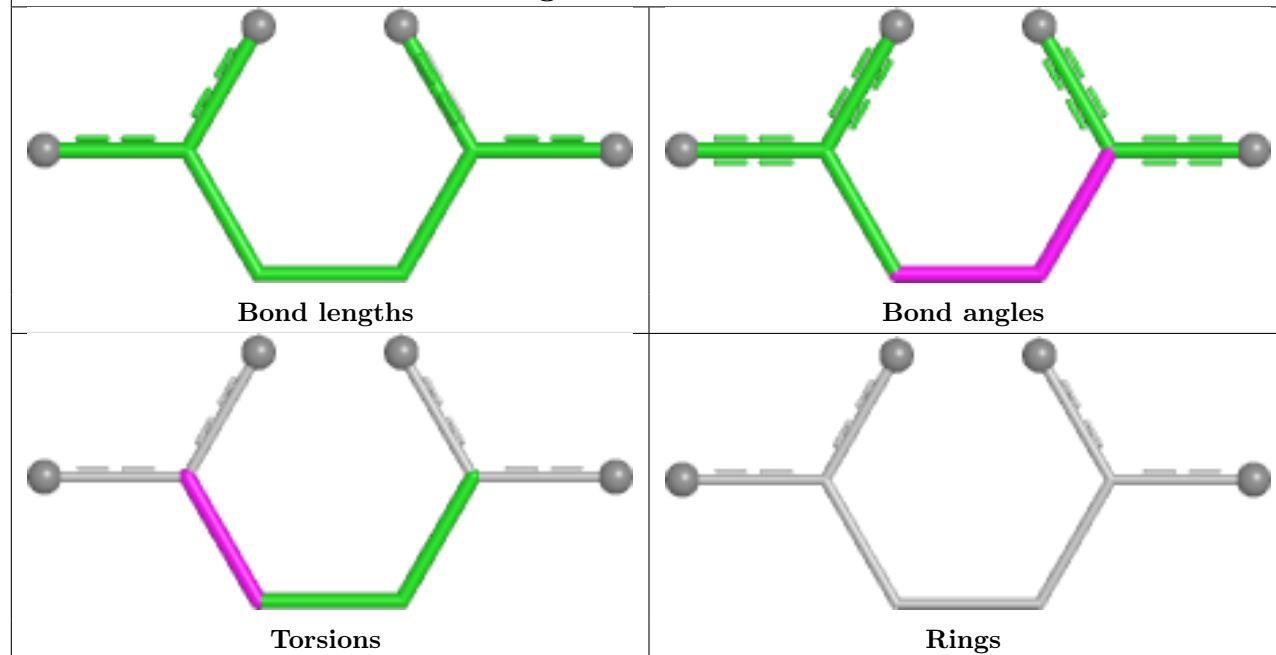




## Ligand YTN A 404 (B)



## Ligand SIN A 402



## 5.7 Other polymers [i](#)

There are no such residues in this entry.

## 5.8 Polymer linkage issues [i](#)

There are no chain breaks in this entry.

## 6 Fit of model and data [i](#)

### 6.1 Protein, DNA and RNA chains [i](#)

In the following table, the column labelled ‘#RSRZ> 2’ contains the number (and percentage) of RSRZ outliers, followed by percent RSRZ outliers for the chain as percentile scores relative to all X-ray entries and entries of similar resolution. The OWAB column contains the minimum, median, 95<sup>th</sup> percentile and maximum values of the occupancy-weighted average B-factor per residue. The column labelled ‘Q< 0.9’ lists the number of (and percentage) of residues with an average occupancy less than 0.9.

Mol	Chain	Analysed	<RSRZ>	#RSRZ>2	OWAB(Å <sup>2</sup> )	Q<0.9
1	A	313/318 (98%)	-0.38	2 (0%) 85 87	12, 22, 37, 60	3 (0%)
1	B	305/318 (95%)	-0.33	2 (0%) 84 85	13, 21, 39, 52	3 (0%)
All	All	618/636 (97%)	-0.35	4 (0%) 85 87	12, 22, 38, 60	6 (0%)

All (4) RSRZ outliers are listed below:

Mol	Chain	Res	Type	RSRZ
1	A	6	PRO	3.4
1	B	6	PRO	2.9
1	B	175	ASP	2.7
1	A	22	GLY	2.0

### 6.2 Non-standard residues in protein, DNA, RNA chains [i](#)

There are no non-standard protein/DNA/RNA residues in this entry.

### 6.3 Carbohydrates [i](#)

There are no oligosaccharides in this entry.

### 6.4 Ligands [i](#)

In the following table, the Atoms column lists the number of modelled atoms in the group and the number defined in the chemical component dictionary. The B-factors column lists the minimum, median, 95<sup>th</sup> percentile and maximum values of B factors of atoms in the group. The column labelled ‘Q< 0.9’ lists the number of atoms with occupancy less than 0.9.

Mol	Type	Chain	Res	Atoms	RSCC	RSR	B-factors(Å <sup>2</sup> )	Q<0.9
5	YTN	B	404[B]	29/29	0.86	0.11	19,26,28,30	29

*Continued on next page...*

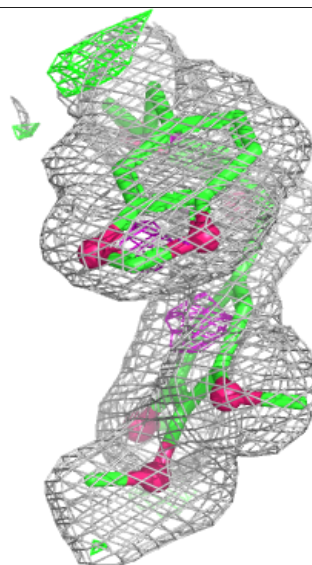
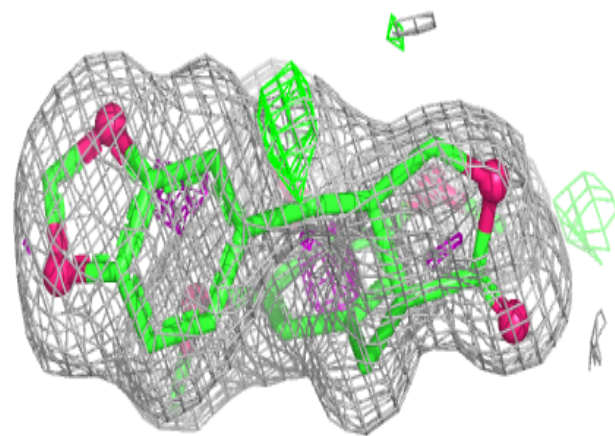
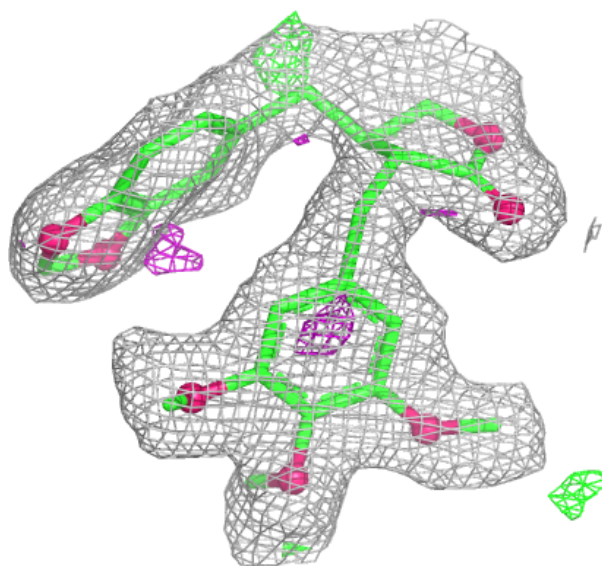
*Continued from previous page...*

Mol	Type	Chain	Res	Atoms	RSCC	RSR	B-factors( $\text{\AA}^2$ )	Q<0.9
3	SIN	B	402	8/8	0.87	0.15	21,38,48,52	0
4	YTC	B	403[A]	29/29	0.88	0.09	19,25,28,30	29
3	SIN	A	402	8/8	0.88	0.15	20,42,46,48	0
5	YTN	A	404[B]	29/29	0.89	0.10	22,24,28,29	29
4	YTC	A	403[A]	29/29	0.90	0.09	21,25,29,29	29
2	FE	A	401	1/1	0.98	0.14	45,45,45,45	0
2	FE	B	401	1/1	0.99	0.17	46,46,46,46	0

The following is a graphical depiction of the model fit to experimental electron density of all instances of the Ligand of Interest. In addition, ligands with molecular weight > 250 and outliers as shown on the geometry validation Tables will also be included. Each fit is shown from different orientation to approximate a three-dimensional view.

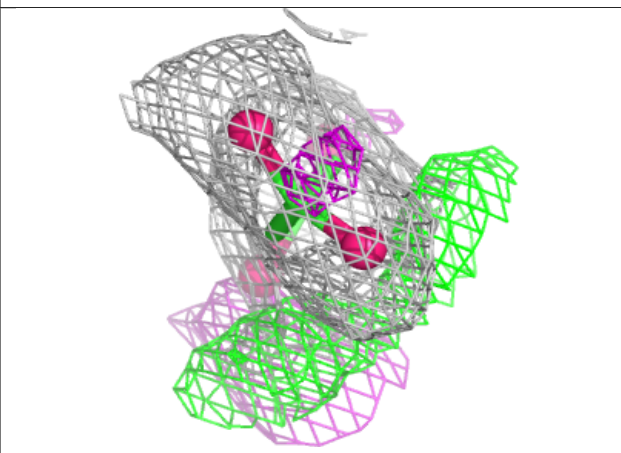
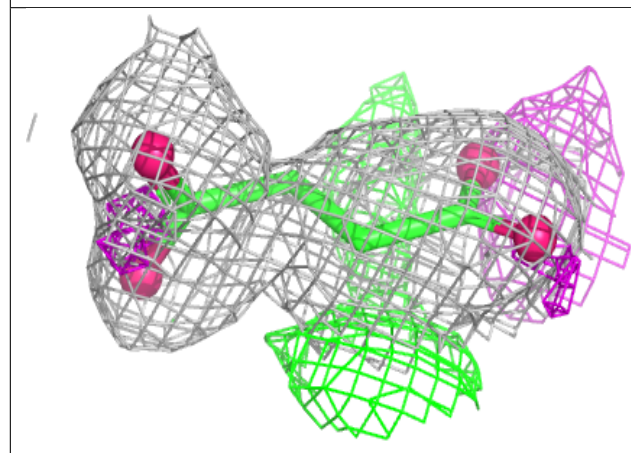
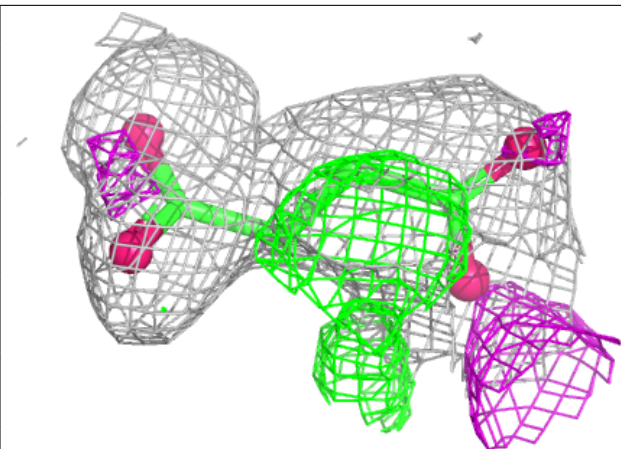
**Electron density around YTN B 404 (B):**

2mF<sub>o</sub>-DF<sub>c</sub> (at 0.7 rmsd) in gray  
mF<sub>o</sub>-DF<sub>c</sub> (at 3 rmsd) in purple (negative)  
and green (positive)



**Electron density around SIN B 402:**

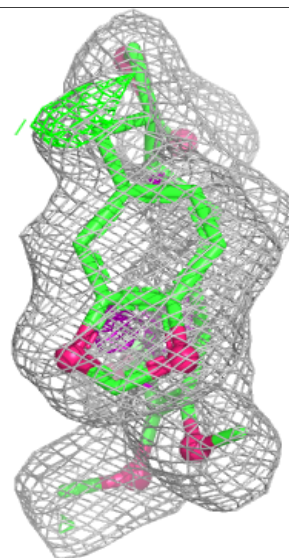
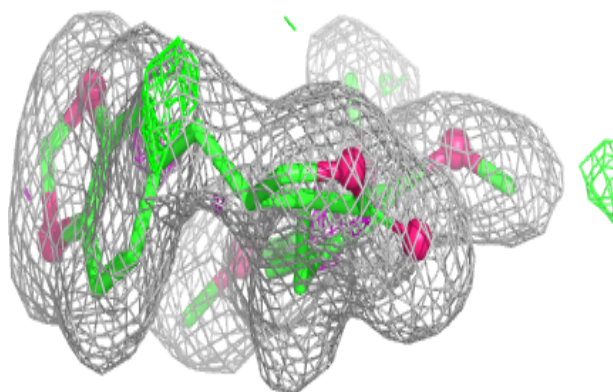
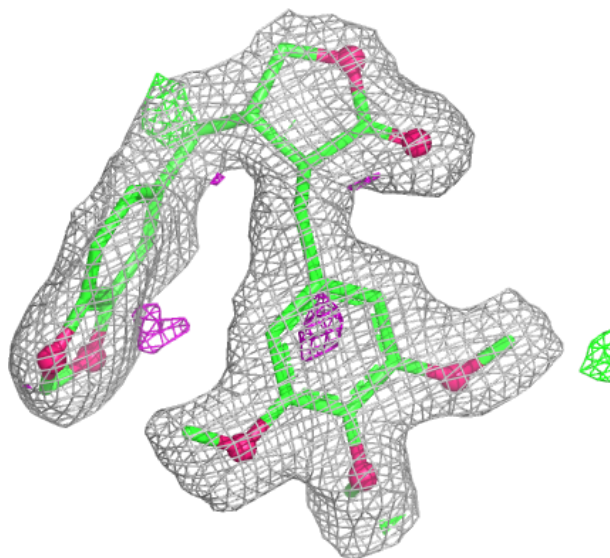
$2mF_o-DF_c$  (at 0.7 rmsd) in gray  
 $mF_o-DF_c$  (at 3 rmsd) in purple (negative)  
and green (positive)





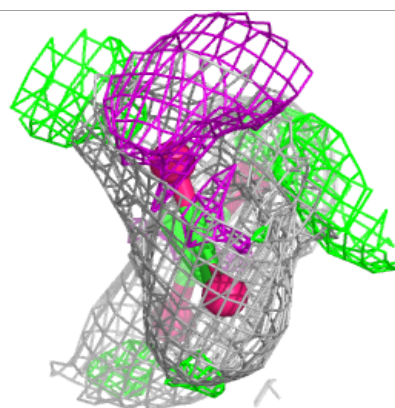
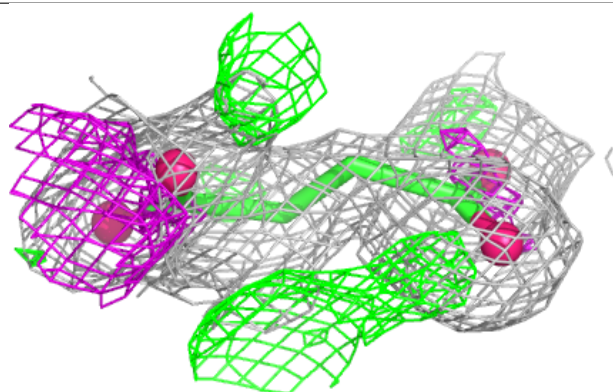
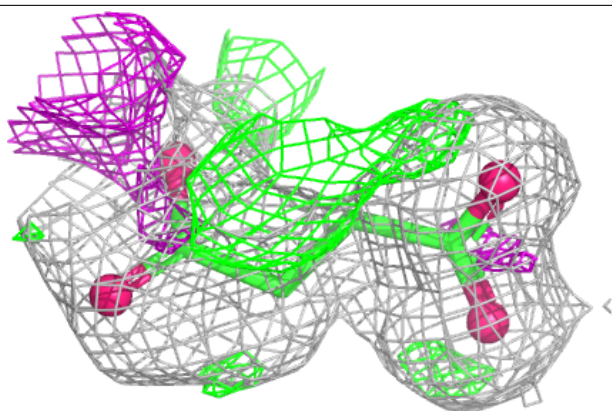
**Electron density around YTC B 403 (A):**

$2mF_o-DF_c$  (at 0.7 rmsd) in gray  
 $mF_o-DF_c$  (at 3 rmsd) in purple (negative)  
and green (positive)



**Electron density around SIN A 402:**

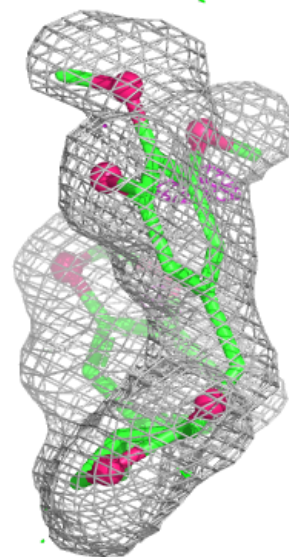
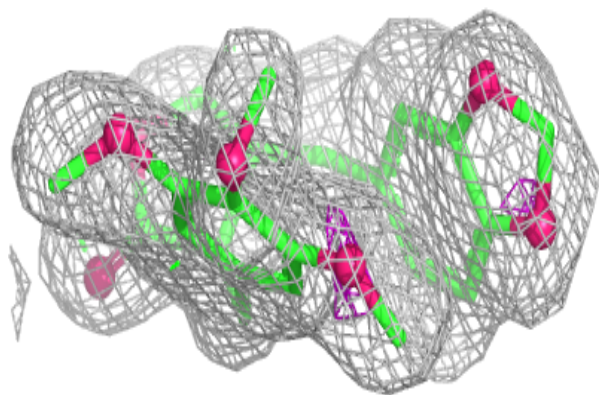
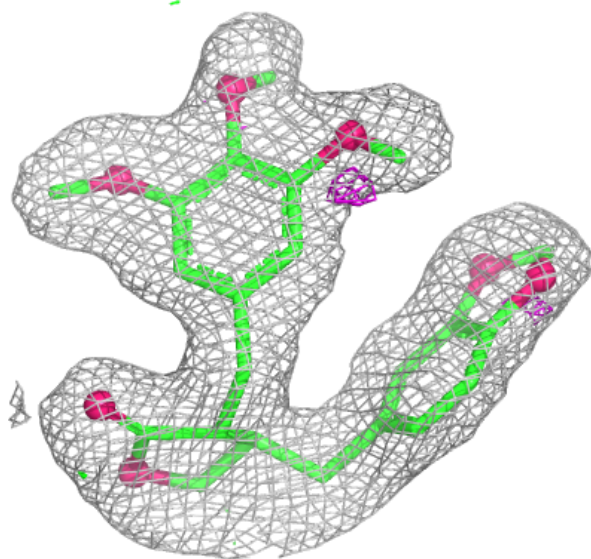
$2mF_o-DF_c$  (at 0.7 rmsd) in gray  
 $mF_o-DF_c$  (at 3 rmsd) in purple (negative)  
and green (positive)

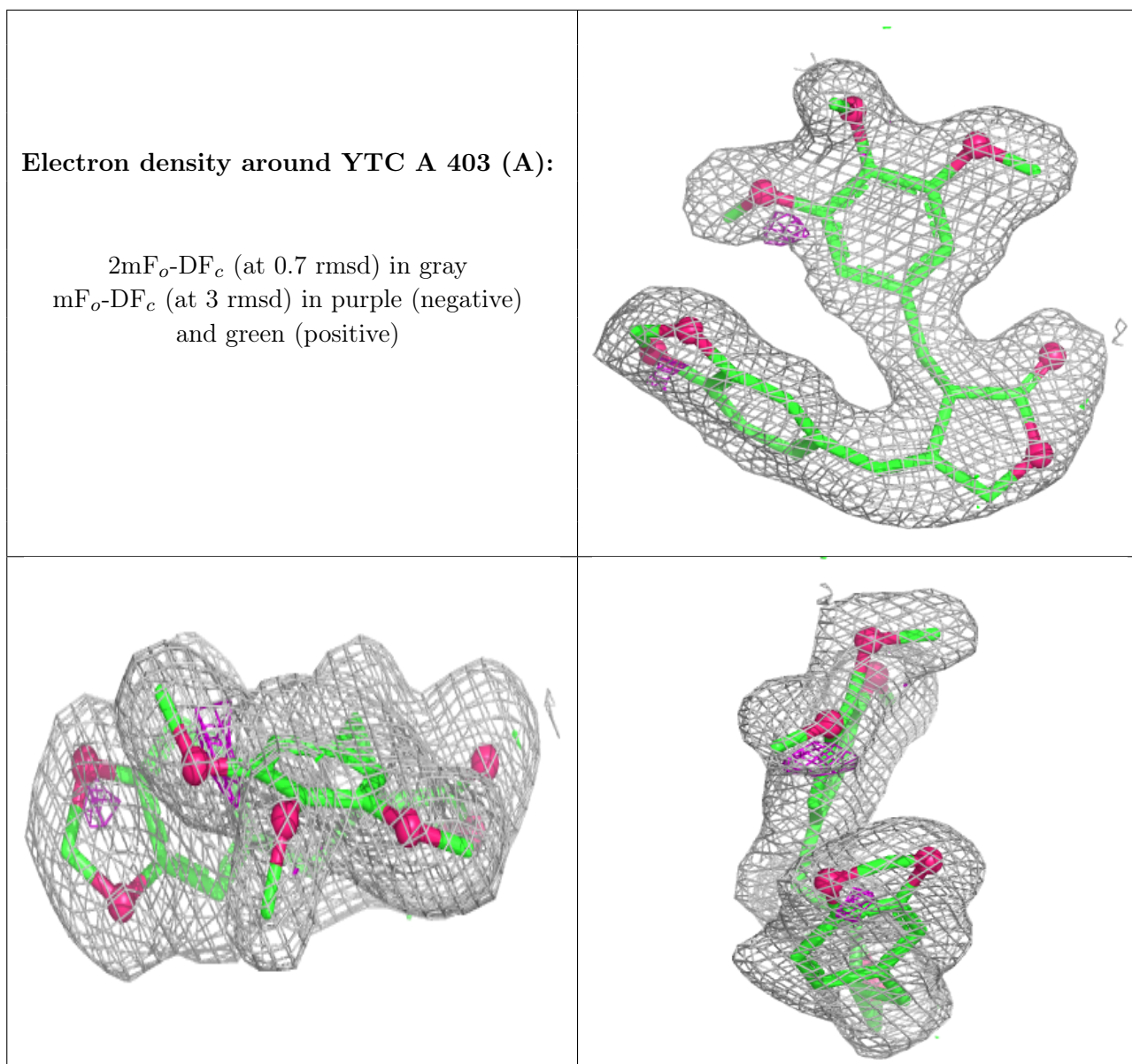




**Electron density around YTN A 404 (B):**

$2mF_o-DF_c$  (at 0.7 rmsd) in gray  
 $mF_o-DF_c$  (at 3 rmsd) in purple (negative)  
and green (positive)





## 6.5 Other polymers [i](#)

There are no such residues in this entry.