



## Full wwPDB EM Validation Report ⓘ

Mar 9, 2026 – 02:35 AM UTC

PDB ID : 7EPD / pdb\_00007epd  
EMDB ID : EMD-31238  
Title : Cryo-EM structure of inactive mGlu2-7 heterodimer  
Authors : Du, J.; Wang, D.; Fan, H.; Tai, L.; Lin, S.; Han, S.; Sun, F.; Wu, B.; Zhao, Q.  
Deposited on : 2021-04-26  
Resolution : 3.90 Å(reported)

This is a Full wwPDB EM Validation Report for a publicly released PDB entry.

We welcome your comments at [validation@mail.wwpdb.org](mailto:validation@mail.wwpdb.org)

A user guide is available at

<https://www.wwpdb.org/validation/2017/EMValidationReportHelp>

with specific help available everywhere you see the ⓘ symbol.

The types of validation reports are described at

<http://www.wwpdb.org/validation/2017/FAQs#types>.

---

The following versions of software and data (see [references ⓘ](#)) were used in the production of this report:

EMDB validation analysis : 0.0.1.dev132  
MolProbity : 4-5-2 with Phenix2.0  
Percentile statistics : 20250101.v01 (using entries in the PDB archive January 1st 2025)  
EM percentile statistics : 202505.v01 (Using data in the EMDB archive up until May 2025)  
MapQ : 1.9.13  
Ideal geometry (proteins) : Engh & Huber (2001)  
Ideal geometry (DNA, RNA) : Parkinson et al. (1996)  
Validation Pipeline (wwPDB-VP) : 2.49

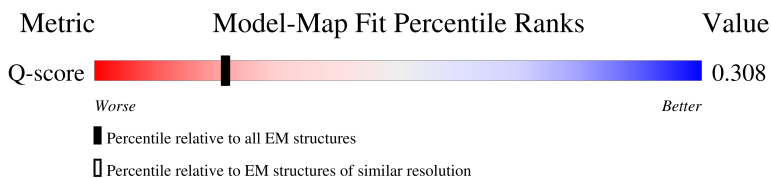
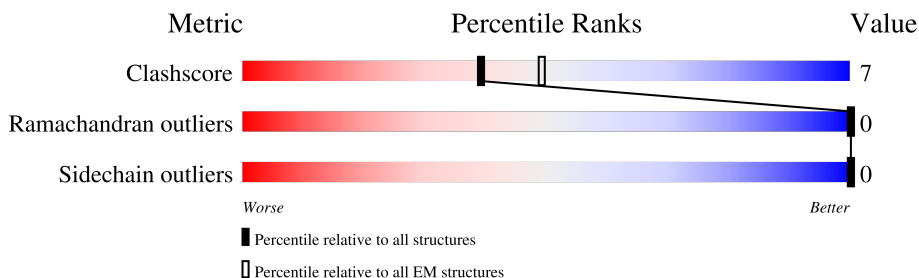
# 1 Overall quality at a glance

The following experimental techniques were used to determine the structure:

*ELECTRON MICROSCOPY*

The reported resolution of this entry is 3.90 Å.

Percentile scores (ranging between 0-100) for global validation metrics of the entry are shown in the following graphic. The table shows the number of entries on which the scores are based.



Metric	Whole archive (#Entries)	EM structures (#Entries)	Similar EM resolution (#Entries, resolution range(Å))
Clashscore	229148	23984	-
Ramachandran outliers	224038	23583	-
Sidechain outliers	223484	23102	-
Q-score	-	25397	8855 ( 3.40 - 4.40 )

The table below summarises the geometric issues observed across the polymeric chains and their fit to the map. The red, orange, yellow and green segments of the bar indicate the fraction of residues that contain outliers for  $\geq 3$ , 2, 1 and 0 types of geometric quality criteria respectively. A grey segment represents the fraction of residues that are not modelled. The numeric value for each fraction is indicated below the corresponding segment, with a dot representing fractions  $\leq 5\%$ . The upper red bar (where present) indicates the fraction of residues that have poor fit to the EM map (all-atom inclusion  $< 40\%$ ). The numeric value is given above the bar.

Mol	Chain	Length	Quality of chain
1	A	947	<div> <div>13%</div> <div>71%</div> <div>11%</div> <div>18%</div> </div>
2	B	967	<div> <div>8%</div> <div>69%</div> <div>13%</div> <div>18%</div> </div>

## 2 Entry composition

There are 2 unique types of molecules in this entry. The entry contains 10710 atoms, of which 0 are hydrogens and 0 are deuteriums.

In the tables below, the AltConf column contains the number of residues with at least one atom in alternate conformation and the Trace column contains the number of residues modelled with at most 2 atoms.

- Molecule 1 is a protein called Metabotropic glutamate receptor 2,Peptidylprolyl isomerase.

Mol	Chain	Residues	Atoms					AltConf	Trace
1	A	777	Total	C	N	O	S	0	0
			5332	3338	963	1002	29		

There are 35 discrepancies between the modelled and reference sequences:

Chain	Residue	Modelled	Actual	Comment	Reference
A	9	ASP	-	expression tag	UNP Q14416
A	10	TYR	-	expression tag	UNP Q14416
A	11	LYS	-	expression tag	UNP Q14416
A	12	ASP	-	expression tag	UNP Q14416
A	13	ASP	-	expression tag	UNP Q14416
A	14	ASP	-	expression tag	UNP Q14416
A	15	ASP	-	expression tag	UNP Q14416
A	16	GLY	-	expression tag	UNP Q14416
A	17	ALA	-	expression tag	UNP Q14416
A	18	PRO	-	expression tag	UNP Q14416
A	655	TYR	ASN	engineered mutation	UNP Q14416
A	815	TYR	HIS	engineered mutation	UNP Q14416
A	826	ALA	-	linker	UNP Q14416
A	827	ALA	-	linker	UNP Q14416
A	828	ALA	-	linker	UNP Q14416
A	936	GLU	-	expression tag	UNP Q0VDC6
A	937	PHE	-	expression tag	UNP Q0VDC6
A	938	LEU	-	expression tag	UNP Q0VDC6
A	939	GLU	-	expression tag	UNP Q0VDC6
A	940	VAL	-	expression tag	UNP Q0VDC6
A	941	LEU	-	expression tag	UNP Q0VDC6
A	942	PHE	-	expression tag	UNP Q0VDC6
A	943	GLN	-	expression tag	UNP Q0VDC6
A	944	GLY	-	expression tag	UNP Q0VDC6
A	945	PRO	-	expression tag	UNP Q0VDC6
A	946	HIS	-	expression tag	UNP Q0VDC6
A	947	HIS	-	expression tag	UNP Q0VDC6
A	948	HIS	-	expression tag	UNP Q0VDC6

*Continued on next page...*

*Continued from previous page...*

Chain	Residue	Modelled	Actual	Comment	Reference
A	949	HIS	-	expression tag	UNP Q0VDC6
A	950	HIS	-	expression tag	UNP Q0VDC6
A	951	HIS	-	expression tag	UNP Q0VDC6
A	952	HIS	-	expression tag	UNP Q0VDC6
A	953	HIS	-	expression tag	UNP Q0VDC6
A	954	HIS	-	expression tag	UNP Q0VDC6
A	955	HIS	-	expression tag	UNP Q0VDC6

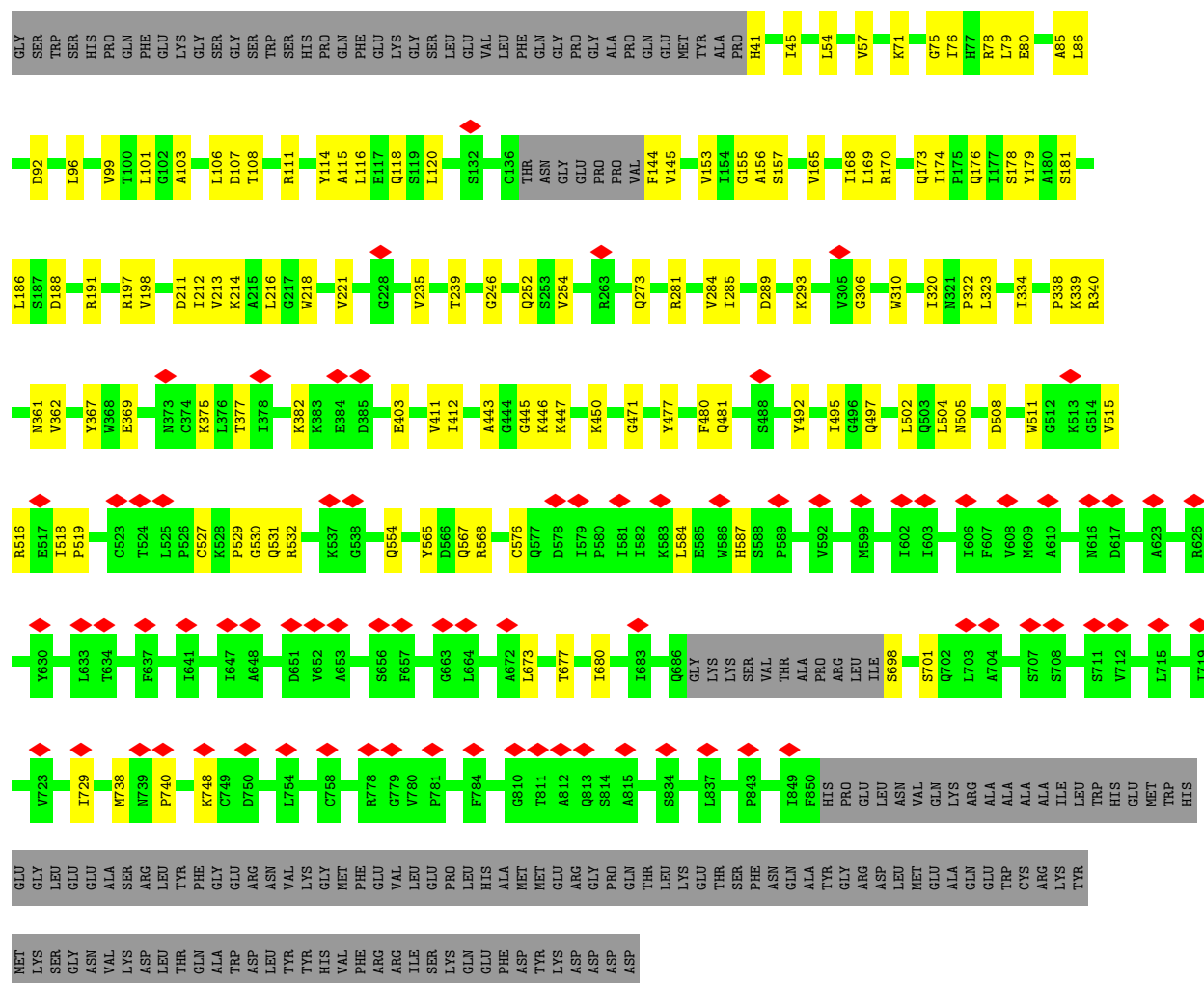
- Molecule 2 is a protein called Isoform 3 of Metabotropic glutamate receptor 7.

Mol	Chain	Residues	Atoms					AltConf	Trace
2	B	792	Total	C	N	O	S	0	0
			5378	3361	962	1026	29		



- Molecule 1: Metabotropic glutamate receptor 2, Peptidylprolyl isomerase





## 4 Experimental information

Property	Value	Source
EM reconstruction method	SINGLE PARTICLE	Depositor
Imposed symmetry	POINT, Not provided	
Number of particles used	1113538	Depositor
Resolution determination method	FSC 0.143 CUT-OFF	Depositor
CTF correction method	NONE	Depositor
Microscope	FEI TITAN KRIOS	Depositor
Voltage (kV)	300	Depositor
Electron dose ( $e^-/\text{\AA}^2$ )	2.1875	Depositor
Minimum defocus (nm)	Not provided	
Maximum defocus (nm)	Not provided	
Magnification	Not provided	
Image detector	GATAN K3 BIOQUANTUM (6k x 4k)	Depositor
Maximum map value	0.177	Depositor
Minimum map value	-0.038	Depositor
Average map value	0.000	Depositor
Map value standard deviation	0.002	Depositor
Recommended contour level	0.012	Depositor
Map size ( $\text{\AA}$ )	321.86, 321.86, 317.68	wwPDB
Map dimensions	308, 308, 304	wwPDB
Map angles ( $^\circ$ )	90.0, 90.0, 90.0	wwPDB
Pixel spacing ( $\text{\AA}$ )	1.045, 1.045, 1.045	Depositor

## 5 Model quality

### 5.1 Standard geometry

The Z score for a bond length (or angle) is the number of standard deviations the observed value is removed from the expected value. A bond length (or angle) with  $|Z| > 5$  is considered an outlier worth inspection. RMSZ is the root-mean-square of all Z scores of the bond lengths (or angles).

Mol	Chain	Bond lengths		Bond angles	
		RMSZ	$\# Z  > 5$	RMSZ	$\# Z  > 5$
1	A	0.09	0/5438	0.26	0/7432
2	B	0.08	0/5481	0.26	0/7504
All	All	0.09	0/10919	0.26	0/14936

There are no bond length outliers.

There are no bond angle outliers.

There are no chirality outliers.

There are no planarity outliers.

### 5.2 Too-close contacts

In the following table, the Non-H and H(model) columns list the number of non-hydrogen atoms and hydrogen atoms in the chain respectively. The H(added) column lists the number of hydrogen atoms added and optimized by MolProbity. The Clashes column lists the number of clashes within the asymmetric unit, whereas Symm-Clashes lists symmetry-related clashes.

Mol	Chain	Non-H	H(model)	H(added)	Clashes	Symm-Clashes
1	A	5332	0	4612	66	0
2	B	5378	0	4511	81	0
All	All	10710	0	9123	143	0

The all-atom clashscore is defined as the number of clashes found per 1000 atoms (including hydrogen atoms). The all-atom clashscore for this structure is 7.

All (143) close contacts within the same asymmetric unit are listed below, sorted by their clash magnitude.

Atom-1	Atom-2	Interatomic distance (Å)	Clash overlap (Å)
1:A:255:ARG:O	1:A:259:GLN:HB2	1.94	0.67
2:B:369:GLU:HG3	2:B:375:LYS:HG2	1.78	0.65

*Continued on next page...*



*Continued from previous page...*

Atom-1	Atom-2	Interatomic distance (Å)	Clash overlap (Å)
2:B:54:LEU:HB2	2:B:155:GLY:HA3	1.81	0.62
2:B:114:TYR:O	2:B:118:GLN:NE2	2.32	0.61
2:B:281:ARG:HB2	2:B:519:PRO:HB3	1.82	0.61
1:A:42:GLN:HA	1:A:93:SER:HB2	1.83	0.61
2:B:495:ILE:HG22	2:B:504:LEU:HB2	1.81	0.61
2:B:211:ASP:HB3	2:B:502:LEU:HD21	1.82	0.61
1:A:78:LEU:HD21	1:A:389:ALA:HB1	1.83	0.60
2:B:252:GLN:NE2	2:B:273:GLN:OE1	2.35	0.59
2:B:153:VAL:HG12	2:B:155:GLY:H	1.67	0.59
2:B:338:PRO:HA	2:B:477:TYR:HA	1.84	0.59
2:B:41:HIS:HB3	2:B:362:VAL:HG21	1.83	0.58
2:B:515:VAL:HG23	2:B:516:ARG:HE	1.69	0.56
1:A:221:ILE:HG21	1:A:240:LYS:HE3	1.86	0.56
1:A:510:LYS:HA	1:A:522:CYS:HA	1.87	0.56
2:B:45:ILE:HD12	2:B:103:ALA:HB3	1.87	0.56
2:B:567:GLN:HB3	2:B:576:CYS:HB3	1.86	0.55
2:B:181:SER:O	2:B:197:ARG:NH2	2.39	0.55
2:B:86:LEU:HD13	2:B:103:ALA:HB2	1.88	0.55
1:A:452:ARG:HH11	1:A:475:ALA:HB2	1.71	0.55
1:A:183:ARG:NH1	1:A:448:ASP:OD1	2.40	0.55
1:A:419:TYR:HA	1:A:423:VAL:HB	1.89	0.55
2:B:165:VAL:HG11	2:B:176:GLN:HE21	1.72	0.54
2:B:511:TRP:HE3	2:B:515:VAL:HG11	1.72	0.54
1:A:204:TRP:NE1	1:A:496:PRO:O	2.40	0.54
1:A:163:ILE:HG22	1:A:182:ALA:HB3	1.89	0.54
1:A:183:ARG:HD2	1:A:187:PRO:HD3	1.89	0.54
1:A:221:ILE:O	1:A:225:GLU:HG2	2.09	0.53
1:A:172:LEU:HB2	1:A:183:ARG:NH2	2.23	0.53
2:B:505:ASN:HB2	2:B:508:ASP:HB2	1.90	0.53
2:B:673:LEU:O	2:B:677:THR:HG23	2.09	0.53
1:A:157:LEU:HD13	2:B:116:LEU:HD11	1.90	0.53
2:B:76:ILE:HD12	2:B:79:LEU:HD21	1.91	0.53
2:B:281:ARG:NH1	2:B:306:GLY:O	2.42	0.53
1:A:279:LEU:HD12	1:A:304:VAL:HG21	1.91	0.52
1:A:395:MET:HE3	1:A:418:LEU:HD12	1.91	0.52
2:B:170:ARG:NH1	2:B:191:ARG:O	2.42	0.52
2:B:527:CYS:HB2	2:B:532:ARG:HD2	1.91	0.52
2:B:169:LEU:HG	2:B:174:ILE:HG13	1.92	0.51
1:A:485:ILE:HB	1:A:488:ALA:HB3	1.92	0.51
2:B:481:GLN:HB2	2:B:495:ILE:HD11	1.91	0.51
1:A:110:LEU:HD11	2:B:120:LEU:HD23	1.92	0.51

*Continued on next page...*

*Continued from previous page...*

Atom-1	Atom-2	Interatomic distance (Å)	Clash overlap (Å)
2:B:293:LYS:HG2	2:B:322:PRO:HA	1.92	0.51
2:B:377:THR:HG23	2:B:382:LYS:HD3	1.93	0.50
2:B:108:THR:HG22	2:B:115:ALA:HA	1.94	0.50
2:B:502:LEU:HD12	2:B:504:LEU:HD23	1.94	0.50
1:A:143:SER:HG	1:A:165:TYR:HH	1.49	0.49
1:A:199:LEU:HD13	1:A:204:TRP:HE3	1.77	0.49
2:B:106:LEU:HD23	2:B:118:GLN:HG3	1.95	0.49
1:A:418:LEU:HA	1:A:422:PHE:HD2	1.76	0.49
2:B:254:VAL:HG11	2:B:273:GLN:HE22	1.77	0.49
1:A:155:LEU:HD23	1:A:162:GLN:HB2	1.93	0.49
1:A:436:ASP:N	1:A:436:ASP:OD1	2.46	0.49
1:A:157:LEU:HD21	2:B:168:ILE:HG23	1.95	0.49
2:B:339:LYS:HD3	2:B:497:GLN:HE22	1.77	0.48
2:B:565:TYR:O	2:B:567:GLN:NE2	2.46	0.48
2:B:698:SER:O	2:B:698:SER:OG	2.31	0.48
1:A:501:SER:HB3	1:A:521:LEU:HG	1.95	0.48
2:B:188:ASP:N	2:B:188:ASP:OD1	2.47	0.48
2:B:71:LYS:HZ3	2:B:367:TYR:HB2	1.78	0.48
2:B:179:TYR:CG	2:B:411:VAL:HG12	2.49	0.48
1:A:204:TRP:CE2	1:A:265:VAL:HG21	2.50	0.47
2:B:495:ILE:O	2:B:505:ASN:ND2	2.47	0.47
2:B:197:ARG:N	2:B:471:GLY:O	2.46	0.47
2:B:340:ARG:NH2	2:B:403:GLU:OE2	2.47	0.47
2:B:531:GLN:O	2:B:532:ARG:NE	2.45	0.47
1:A:629:THR:O	1:A:633:THR:HG23	2.13	0.47
2:B:698:SER:OG	2:B:701:SER:OG	2.31	0.47
1:A:119:HIS:HA	2:B:144:PHE:HD2	1.80	0.47
2:B:289:ASP:O	2:B:293:LYS:HG3	2.15	0.47
1:A:156:ARG:HG3	1:A:179:ASP:HB2	1.96	0.47
1:A:411:ARG:HB2	1:A:412:PRO:HD3	1.97	0.47
2:B:518:ILE:HG13	2:B:519:PRO:HD3	1.96	0.47
1:A:294:SER:OG	1:A:295:ASP:N	2.47	0.46
2:B:530:GLY:O	2:B:554:GLN:NE2	2.48	0.46
2:B:568:ARG:NH2	2:B:740:PRO:O	2.49	0.46
1:A:297:TRP:HE1	1:A:304:VAL:HG11	1.80	0.46
1:A:250:PHE:HA	1:A:253:VAL:HG12	1.98	0.46
1:A:146:ASP:N	1:A:146:ASP:OD1	2.48	0.46
2:B:214:LYS:NZ	2:B:246:GLY:O	2.46	0.46
2:B:212:ILE:HD11	2:B:334:ILE:HD11	1.97	0.45
2:B:320:ILE:HD13	2:B:492:TYR:HE2	1.81	0.45
1:A:165:TYR:HA	1:A:184:THR:HG22	1.98	0.45

*Continued on next page...*

*Continued from previous page...*

Atom-1	Atom-2	Interatomic distance (Å)	Clash overlap (Å)
2:B:480:PHE:HD2	2:B:492:TYR:HB3	1.80	0.45
2:B:443:ALA:HB1	2:B:447:LYS:HD2	1.98	0.45
1:A:105:PHE:HD2	1:A:136:ILE:HG21	1.82	0.45
2:B:235:VAL:O	2:B:239:THR:HG23	2.17	0.45
1:A:315:ILE:HG22	1:A:457:THR:HB	1.99	0.45
2:B:157:SER:HB2	2:B:179:TYR:OH	2.17	0.45
1:A:143:SER:HA	1:A:166:ALA:HB3	1.99	0.45
1:A:632:CYS:HB2	1:A:721:CYS:HB2	1.65	0.45
2:B:75:GLY:HA2	2:B:78:ARG:HD2	1.98	0.45
1:A:94:LYS:HE3	1:A:97:HIS:HB2	1.99	0.44
1:A:246:SER:OG	1:A:247:ARG:N	2.50	0.44
1:A:650:LEU:O	1:A:654:THR:HG23	2.17	0.44
2:B:677:THR:HA	2:B:680:ILE:HG12	1.99	0.44
2:B:173:GLN:HB3	2:B:445:GLY:H	1.83	0.44
1:A:28:LEU:N	1:A:86:ALA:O	2.47	0.44
2:B:221:VAL:HG21	2:B:284:VAL:HG13	1.98	0.44
2:B:80:GLU:OE2	2:B:361:ASN:ND2	2.50	0.44
2:B:85:ALA:HB2	2:B:412:ILE:HG23	1.99	0.44
1:A:255:ARG:HD3	1:A:285:LEU:HD11	1.99	0.44
2:B:323:LEU:H	2:B:323:LEU:HD23	1.83	0.44
2:B:96:LEU:HD23	2:B:99:VAL:HG13	2.00	0.43
1:A:35:GLY:HA3	1:A:105:PHE:HE2	1.82	0.43
2:B:57:VAL:HG22	2:B:107:ASP:OD1	2.18	0.43
2:B:101:LEU:HD12	2:B:101:LEU:HA	1.88	0.43
2:B:285:ILE:HD11	2:B:310:TRP:HD1	1.84	0.43
1:A:377:LYS:HA	1:A:380:PHE:HD2	1.84	0.43
1:A:405:ARG:HD3	1:A:405:ARG:H	1.84	0.43
1:A:144:TYR:HB2	1:A:147:VAL:HG12	2.01	0.42
2:B:213:VAL:HG13	2:B:218:TRP:CD1	2.53	0.42
1:A:715:GLU:HB3	1:A:717:VAL:HG12	2.00	0.42
1:A:59:ILE:HG13	1:A:348:PHE:HB2	2.02	0.42
1:A:191:GLN:HE22	1:A:295:ASP:H	1.68	0.42
2:B:92:ASP:OD1	2:B:92:ASP:N	2.50	0.42
2:B:216:LEU:HD12	2:B:216:LEU:HA	1.87	0.42
2:B:529:PRO:HD2	2:B:532:ARG:HG2	2.01	0.42
1:A:35:GLY:N	1:A:138:GLY:O	2.53	0.42
1:A:505:LEU:HG	1:A:506:GLN:H	1.83	0.41
2:B:179:TYR:HA	2:B:198:VAL:HG12	2.02	0.41
2:B:738:MET:HG2	2:B:740:PRO:HD2	2.02	0.41
2:B:111:ARG:HD3	2:B:111:ARG:HA	1.94	0.41
2:B:186:LEU:HD11	2:B:197:ARG:HD2	2.02	0.41

*Continued on next page...*

Continued from previous page...

Atom-1	Atom-2	Interatomic distance (Å)	Clash overlap (Å)
1:A:509:VAL:HG11	1:A:537:CYS:HB2	2.02	0.41
1:A:814:LEU:O	1:A:819:PHE:N	2.44	0.41
2:B:446:LYS:O	2:B:450:LYS:HG2	2.20	0.41
1:A:171:LYS:HE2	1:A:171:LYS:HB3	1.91	0.41
1:A:174:ASP:OD1	1:A:176:SER:OG	2.36	0.41
1:A:165:TYR:CG	1:A:381:VAL:HG12	2.55	0.41
2:B:144:PHE:CD2	2:B:145:VAL:HG13	2.56	0.41
1:A:481:ASP:OD1	1:A:481:ASP:N	2.47	0.41
1:A:321:SER:O	1:A:321:SER:OG	2.37	0.40
2:B:156:ALA:O	2:B:178:SER:OG	2.37	0.40
2:B:729:ILE:HG22	2:B:748:LYS:O	2.21	0.40
1:A:414:ASN:ND2	1:A:417:ARG:HB3	2.37	0.40
1:A:161:PRO:HA	1:A:180:TYR:HB3	2.03	0.40
2:B:584:LEU:HA	2:B:587:HIS:CE1	2.56	0.40
1:A:174:ASP:CG	1:A:176:SER:OG	2.65	0.40
1:A:675:SER:HA	1:A:676:PRO:HD3	1.98	0.40
1:A:683:CYS:O	1:A:687:ILE:HG12	2.21	0.40
1:A:64:ALA:HB1	1:A:378:ILE:HG23	2.02	0.40

There are no symmetry-related clashes.

## 5.3 Torsion angles

### 5.3.1 Protein backbone

In the following table, the Percentiles column shows the percent Ramachandran outliers of the chain as a percentile score with respect to all PDB entries followed by that with respect to all EM entries.

The Analysed column shows the number of residues for which the backbone conformation was analysed, and the total number of residues.

Mol	Chain	Analysed	Favoured	Allowed	Outliers	Percentiles	
1	A	771/947 (81%)	740 (96%)	31 (4%)	0	100	100
2	B	786/967 (81%)	754 (96%)	32 (4%)	0	100	100
All	All	1557/1914 (81%)	1494 (96%)	63 (4%)	0	100	100

There are no Ramachandran outliers to report.

### 5.3.2 Protein sidechains

In the following table, the Percentiles column shows the percent sidechain outliers of the chain as a percentile score with respect to all PDB entries followed by that with respect to all EM entries.

The Analysed column shows the number of residues for which the sidechain conformation was analysed, and the total number of residues.

Mol	Chain	Analysed	Rotameric	Outliers	Percentiles	
1	A	443/777 (57%)	443 (100%)	0	100	100
2	B	440/834 (53%)	440 (100%)	0	100	100
All	All	883/1611 (55%)	883 (100%)	0	100	100

There are no protein residues with a non-rotameric sidechain to report.

Sometimes sidechains can be flipped to improve hydrogen bonding and reduce clashes. All (20) such sidechains are listed below:

Mol	Chain	Res	Type
1	A	286	ASN
1	A	342	ASN
1	A	439	ASN
1	A	454	ASN
2	B	98	ASN
2	B	118	GLN
2	B	173	GLN
2	B	205	GLN
2	B	252	GLN
2	B	273	GLN
2	B	294	GLN
2	B	326	HIS
2	B	404	GLN
2	B	420	HIS
2	B	426	ASN
2	B	468	ASN
2	B	497	GLN
2	B	505	ASN
2	B	554	GLN
2	B	567	GLN

### 5.3.3 RNA

There are no RNA molecules in this entry.

## 5.4 Non-standard residues in protein, DNA, RNA chains [i](#)

There are no non-standard protein/DNA/RNA residues in this entry.

## 5.5 Carbohydrates [i](#)

There are no oligosaccharides in this entry.

## 5.6 Ligand geometry [i](#)

There are no ligands in this entry.

## 5.7 Other polymers [i](#)

There are no such residues in this entry.

## 5.8 Polymer linkage issues [i](#)

There are no chain breaks in this entry.

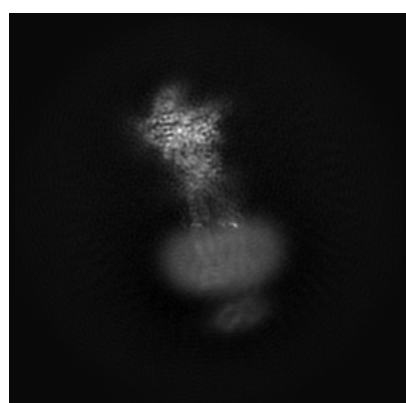
## 6 Map visualisation [i](#)

This section contains visualisations of the EMDB entry EMD-31238. These allow visual inspection of the internal detail of the map and identification of artifacts.

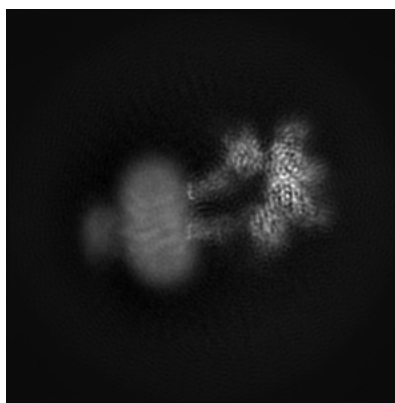
No raw map or half-maps were deposited for this entry and therefore no images, graphs, etc. pertaining to the raw map can be shown.

### 6.1 Orthogonal projections [i](#)

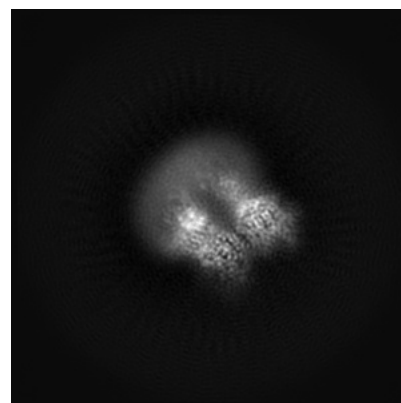
#### 6.1.1 Primary map



X



Y

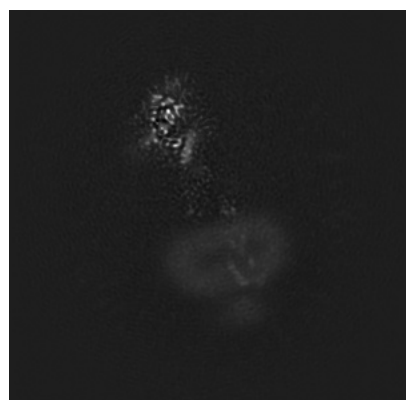


Z

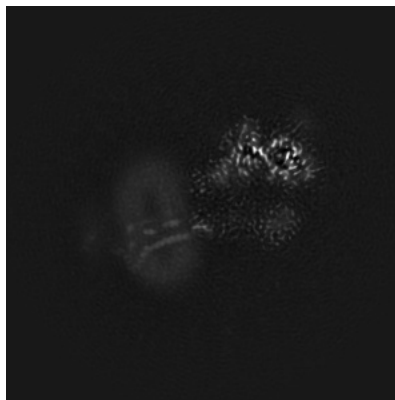
The images above show the map projected in three orthogonal directions.

### 6.2 Central slices [i](#)

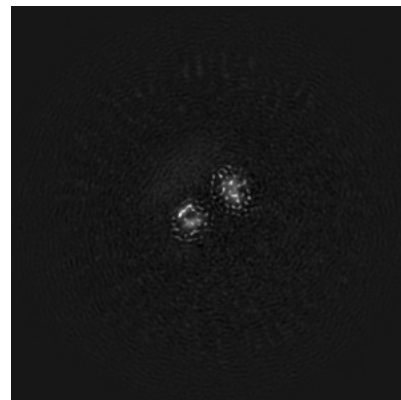
#### 6.2.1 Primary map



X Index: 154



Y Index: 154

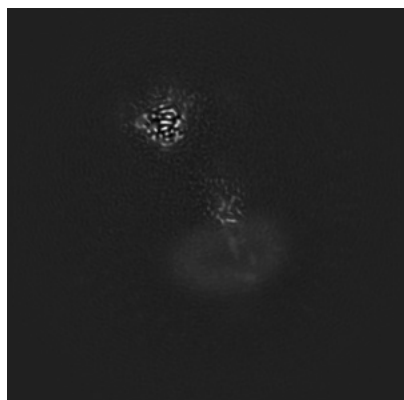


Z Index: 152

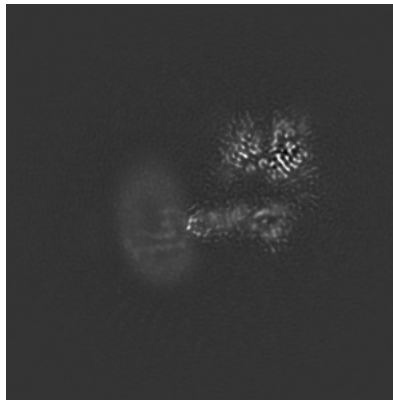
The images above show central slices of the map in three orthogonal directions.

## 6.3 Largest variance slices [i](#)

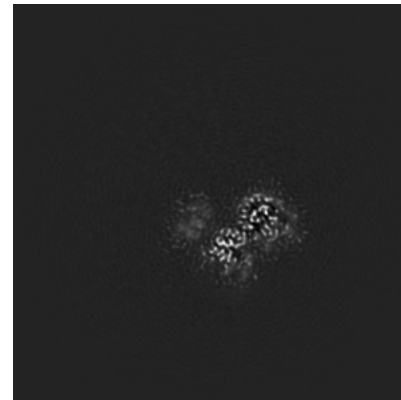
### 6.3.1 Primary map



X Index: 164



Y Index: 145

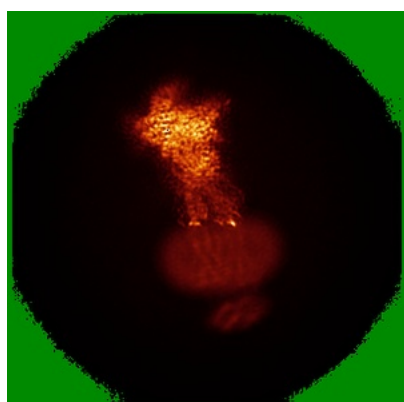


Z Index: 212

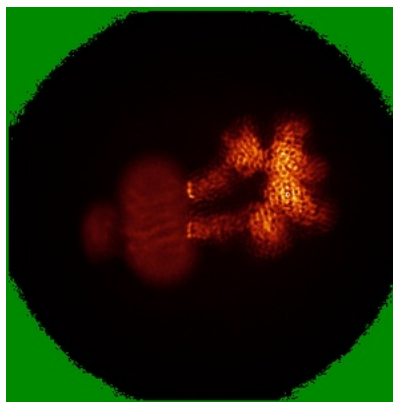
The images above show the largest variance slices of the map in three orthogonal directions.

## 6.4 Orthogonal standard-deviation projections (False-color) [i](#)

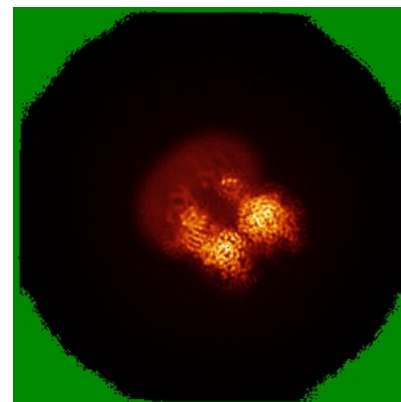
### 6.4.1 Primary map



X



Y



Z

The images above show the map standard deviation projections with false color in three orthogonal directions. Minimum values are shown in green, max in blue, and dark to light orange shades represent small to large values respectively.



## 6.5 Orthogonal surface views

This section was not generated.

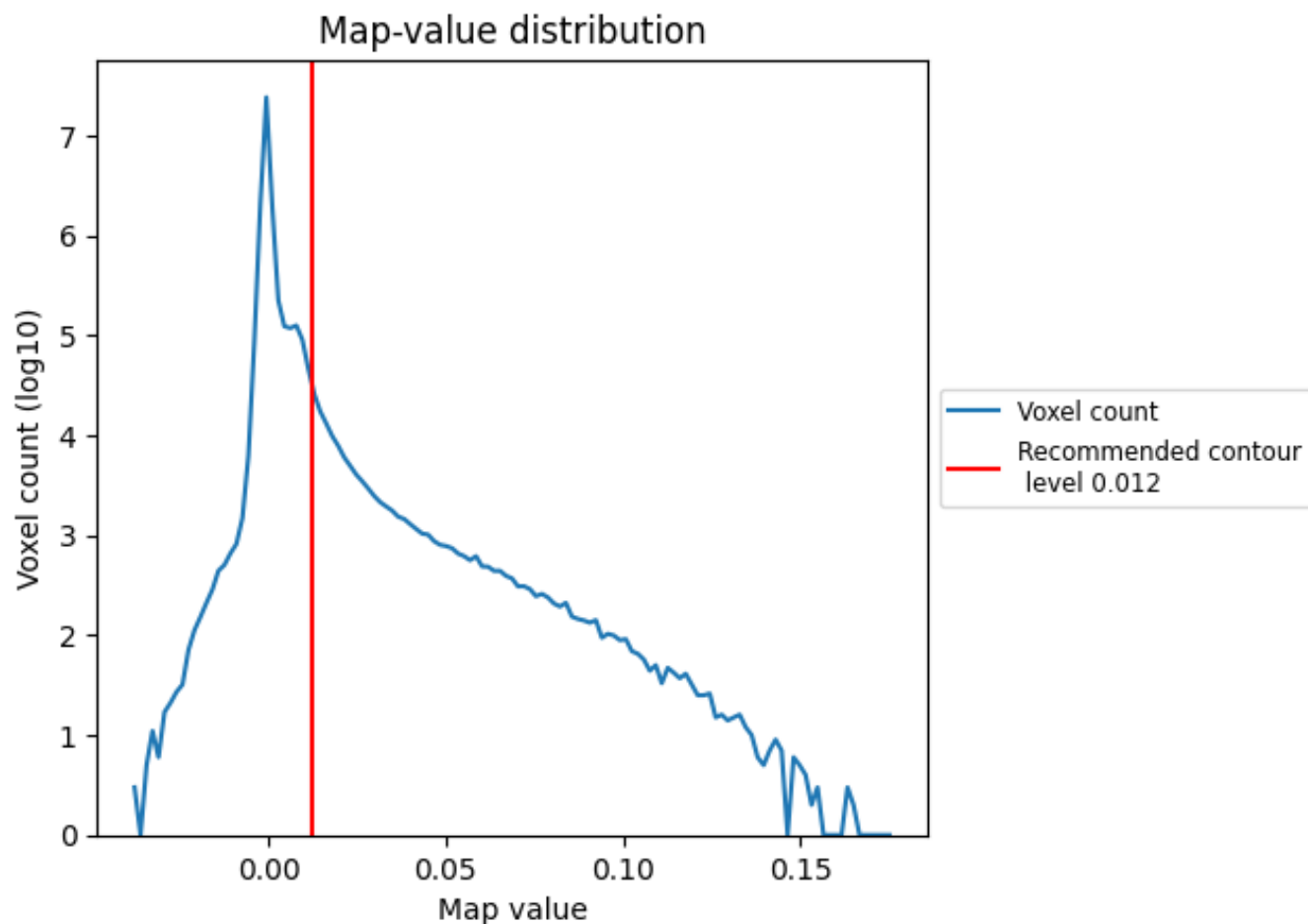
## 6.6 Mask visualisation

This section was not generated. No masks/segmentation were deposited.

## 7 Map analysis [i](#)

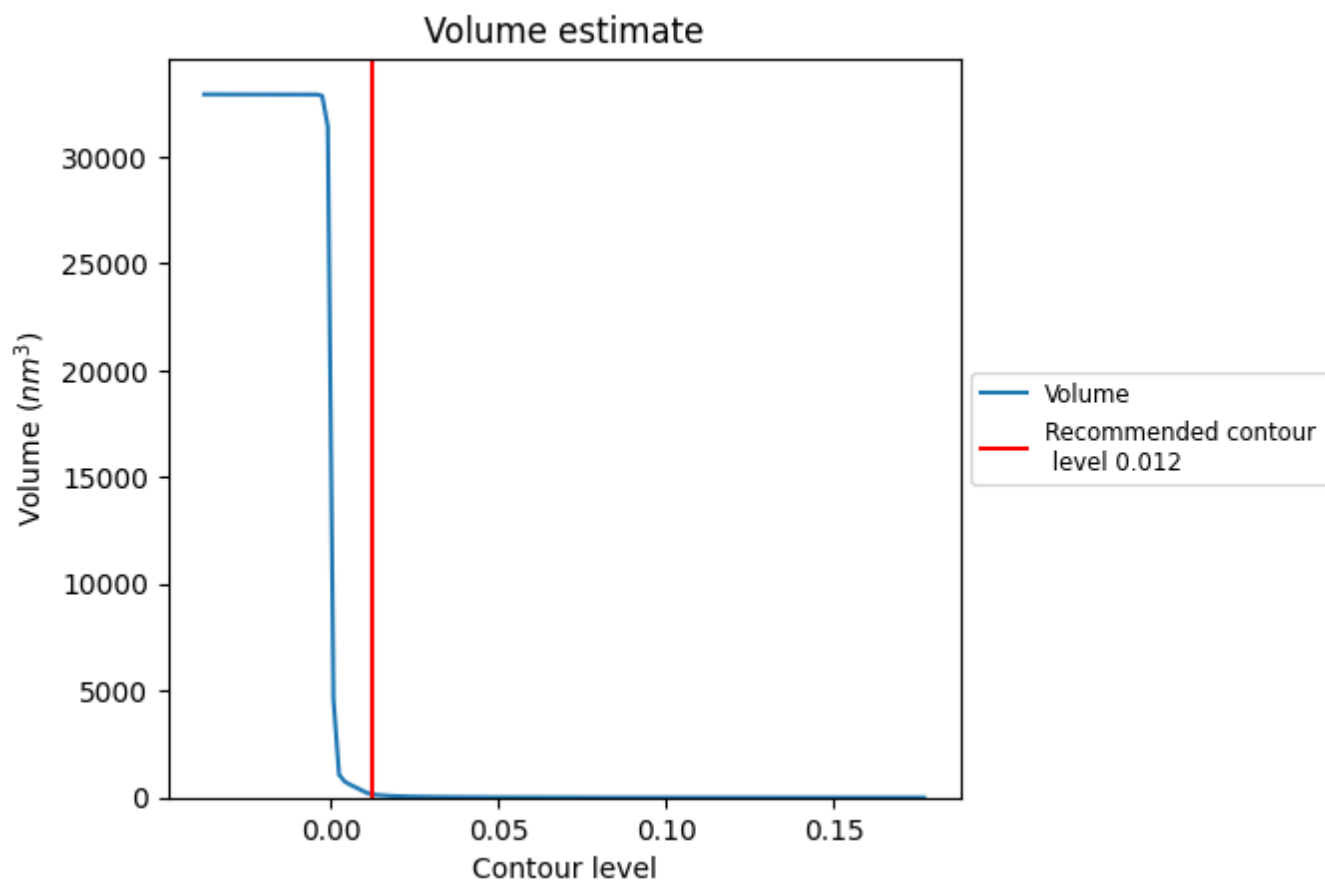
This section contains the results of statistical analysis of the map.

### 7.1 Map-value distribution [i](#)



The map-value distribution is plotted in 128 intervals along the x-axis. The y-axis is logarithmic. A spike in this graph at zero usually indicates that the volume has been masked.

## 7.2 Volume estimate [i](#)



The volume at the recommended contour level is 168 nm<sup>3</sup>; this corresponds to an approximate mass of 152 kDa.

The volume estimate graph shows how the enclosed volume varies with the contour level. The recommended contour level is shown as a vertical line and the intersection between the line and the curve gives the volume of the enclosed surface at the given level.

## 7.3 Rotationally averaged power spectrum [i](#)

This section was not generated. The rotationally averaged power spectrum is only generated for cubic maps.

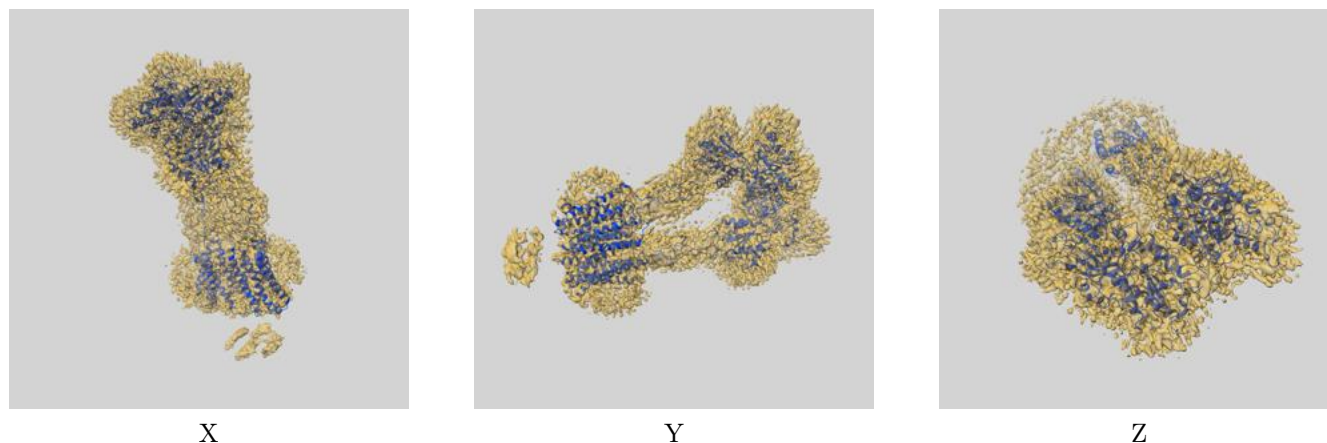
## 8 Fourier-Shell correlation ⓘ

This section was not generated. No FSC curve or half-maps provided.

## 9 Map-model fit [i](#)

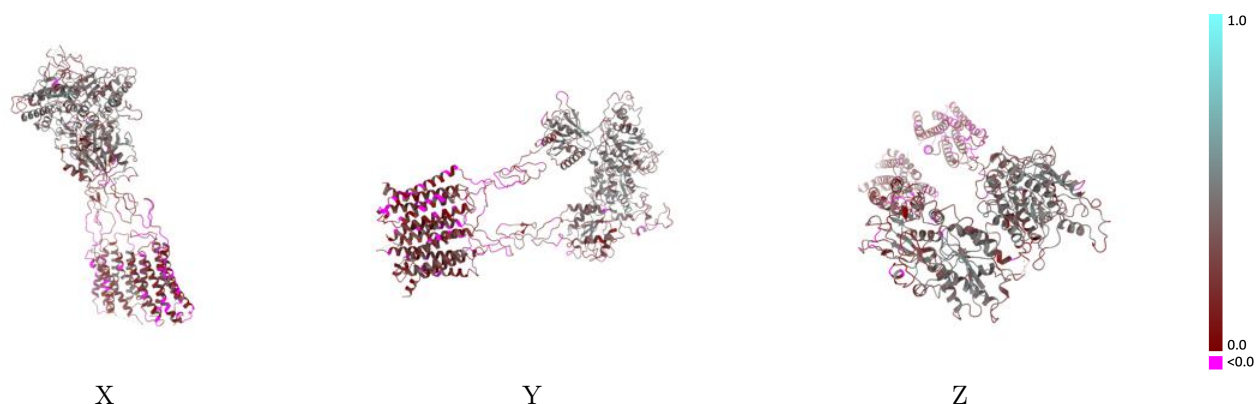
This section contains information regarding the fit between EMDB map EMD-31238 and PDB model 7EPD. Per-residue inclusion information can be found in section [3](#) on page [5](#).

### 9.1 Map-model overlay [i](#)



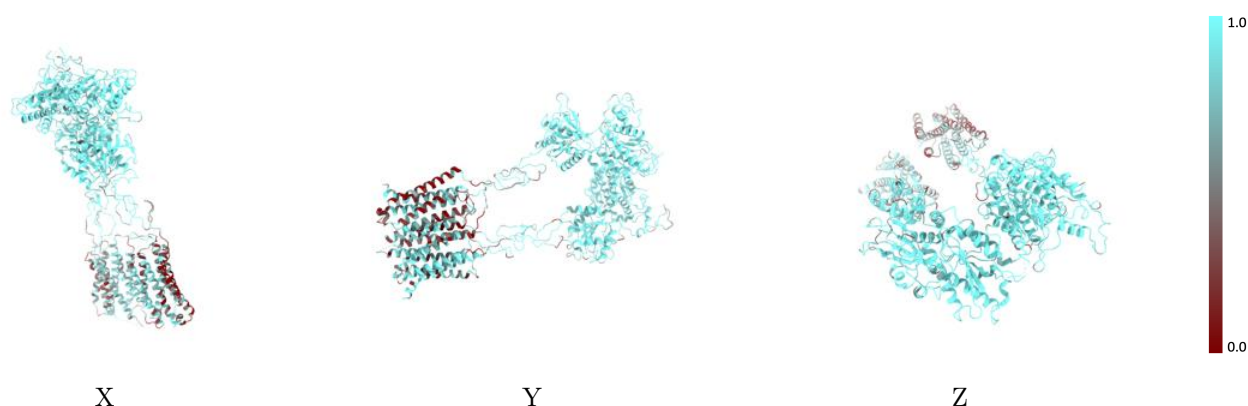
The images above show the 3D surface view of the map at the recommended contour level 0.012 at 50% transparency in yellow overlaid with a ribbon representation of the model coloured in blue. These images allow for the visual assessment of the quality of fit between the atomic model and the map.

## 9.2 Q-score mapped to coordinate model [i](#)



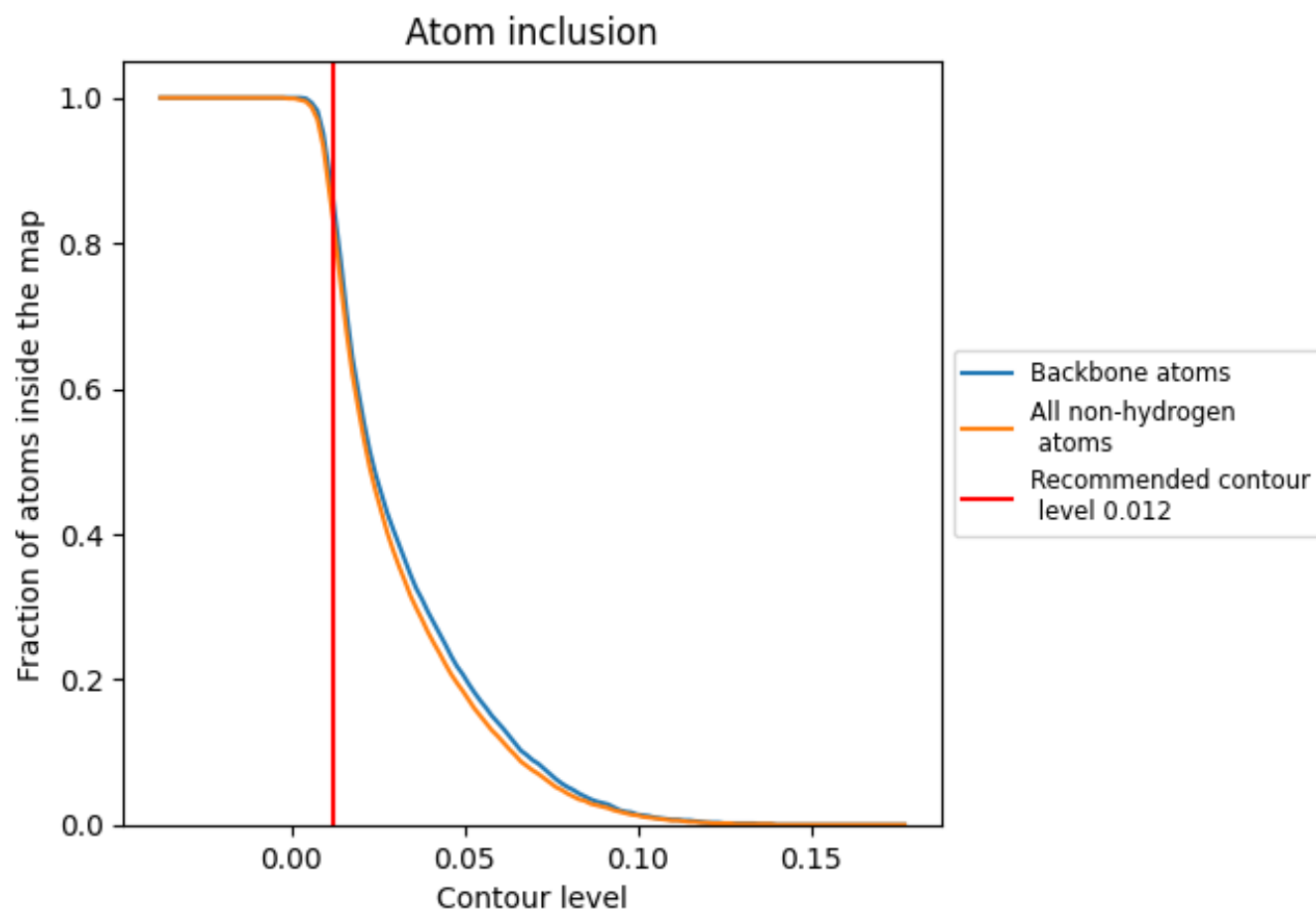
The images above show the model with each residue coloured according to its Q-score. This shows their resolvability in the map with higher Q-score values reflecting better resolvability. Please note: Q-score is calculating the resolvability of atoms, and thus high values are only expected at resolutions at which atoms can be resolved. Low Q-score values may therefore be expected for many entries.

## 9.3 Atom inclusion mapped to coordinate model [i](#)



The images above show the model with each residue coloured according to its atom inclusion. This shows to what extent they are inside the map at the recommended contour level (0.012).

## 9.4 Atom inclusion [i](#)



At the recommended contour level, 86% of all backbone atoms, 83% of all non-hydrogen atoms, are inside the map.

9.5 Map-model fit summary ⓘ

The table lists the average atom inclusion at the recommended contour level (0.012) and Q-score for the entire model and for each chain.

Chain	Atom inclusion	Q-score
All	<div></div> 0.8310	<div></div> 0.3080
A	<div></div> 0.8170	<div></div> 0.3160
B	<div></div> 0.8440	<div></div> 0.3010

