



Full wwPDB X-ray Structure Validation Report ⓘ

Apr 26, 2026 – 03:48 AM EDT

PDB ID : 7K8G / pdb_00007k8g
Title : Crystal structure of bovine RPE65 in complex with 4-fluoro-MB-004 and palmitate
Authors : Kiser, P.D.
Deposited on : 2020-09-27
Resolution : 1.95 Å(reported)

This is a Full wwPDB X-ray Structure Validation Report for a publicly released PDB entry.

We welcome your comments at validation@mail.wwpdb.org

A user guide is available at

<https://www.wwpdb.org/validation/2017/XrayValidationReportHelp>

with specific help available everywhere you see the ⓘ symbol.

The types of validation reports are described at

<http://www.wwpdb.org/validation/2017/FAQs#types>.

The following versions of software and data (see [references ⓘ](#)) were used in the production of this report:

MolProbity	:	4-5-2 with Phenix2.0
Mogul	:	2022.3.0, CSD as543be (2022)
Xtriage (Phenix)	:	2.0
EDS	:	3.0
Buster-report	:	wwPDB partial adaption of 1.1.7 (2018)
Percentile statistics	:	20250101.v01 (using entries in the PDB archive January 1st 2025)
CCP4	:	9.0.010 (Gargrove)
Density-Fitness	:	1.0.12
Ideal geometry (proteins)	:	Engh & Huber (2001)
Ideal geometry (DNA, RNA)	:	Parkinson et al. (1996)
Validation Pipeline (wwPDB-VP)	:	2.49

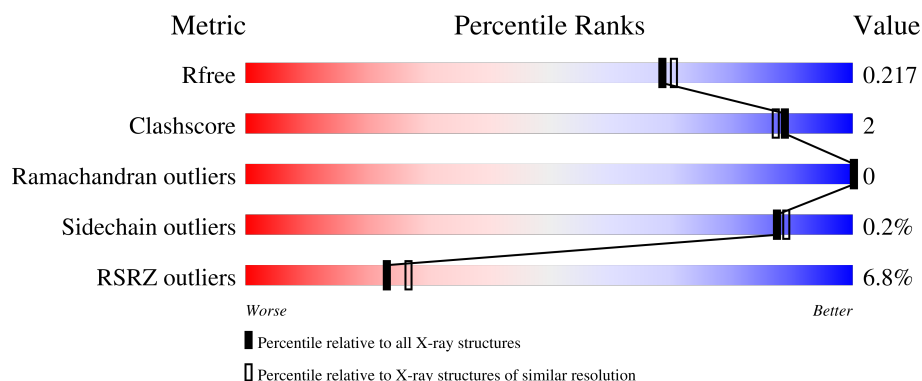
1 Overall quality at a glance

The following experimental techniques were used to determine the structure:

X-RAY DIFFRACTION

The reported resolution of this entry is 1.95 Å.

Percentile scores (ranging between 0-100) for global validation metrics of the entry are shown in the following graphic. The table shows the number of entries on which the scores are based.



Metric	Whole archive (#Entries)	Similar resolution (#Entries, resolution range(Å))
R_{free}	180053	3494 (1.96-1.96)
Clashscore	190562	3612 (1.96-1.96)
Ramachandran outliers	187476	3587 (1.96-1.96)
Sidechain outliers	187428	3587 (1.96-1.96)
RSRZ outliers	180081	3495 (1.96-1.96)

The table below summarises the geometric issues observed across the polymeric chains and their fit to the electron density. The red, orange, yellow and green segments of the lower bar indicate the fraction of residues that contain outliers for ≥ 3 , 2, 1 and 0 types of geometric quality criteria respectively. A grey segment represents the fraction of residues that are not modelled. The numeric value for each fraction is indicated below the corresponding segment, with a dot representing fractions $\leq 5\%$. The upper red bar (where present) indicates the fraction of residues that have poor fit to the electron density. The numeric value is given above the bar.

Mol	Chain	Length	Quality of chain
1	A	533	<div> <div>7%</div> <div>90%</div> <div>6%</div> </div>
1	B	533	<div> <div>6%</div> <div>91%</div> <div>6%</div> </div>

2 Entry composition

There are 5 unique types of molecules in this entry. The entry contains 9220 atoms, of which 0 are hydrogens and 0 are deuteriums.

In the tables below, the ZeroOcc column contains the number of atoms modelled with zero occupancy, the AltConf column contains the number of residues with at least one atom in alternate conformation and the Trace column contains the number of residues modelled with at most 2 atoms.

- Molecule 1 is a protein called Retinoid isomerohydrolase.

Mol	Chain	Residues	Atoms					ZeroOcc	AltConf	Trace
1	A	499	Total	C	N	O	S	0	12	0
			4109	2649	680	762	18			
1	B	502	Total	C	N	O	S	0	13	0
			4144	2671	686	770	17			

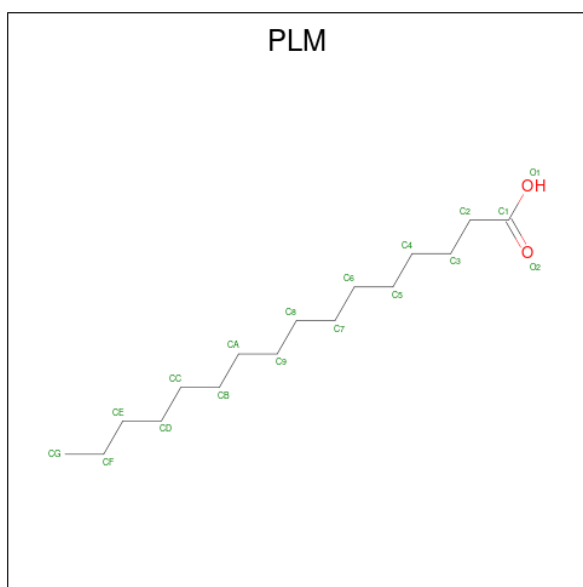
There are 4 discrepancies between the modelled and reference sequences:

Chain	Residue	Modelled	Actual	Comment	Reference
A	1	ACE	-	acetylation	UNP Q28175
A	341	LEU	SER	conflict	UNP Q28175
B	1	ACE	-	acetylation	UNP Q28175
B	341	LEU	SER	conflict	UNP Q28175

- Molecule 2 is FE (II) ION (CCD ID: FE2) (formula: Fe) (labeled as "Ligand of Interest" by depositor).

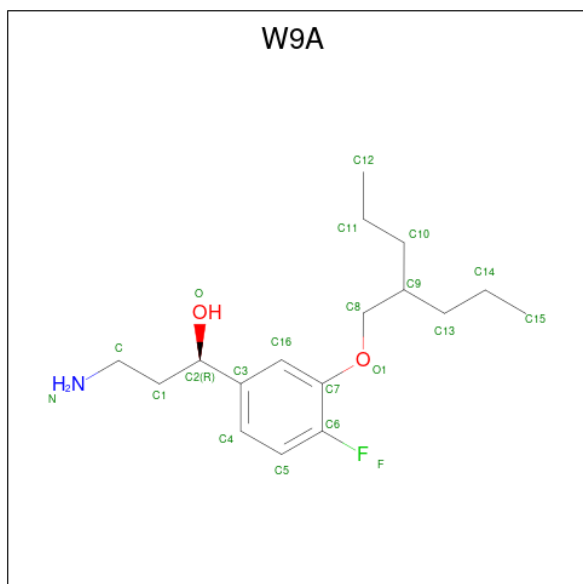
Mol	Chain	Residues	Atoms		ZeroOcc	AltConf
2	A	1	Total	Fe	0	0
			1	1		
2	B	1	Total	Fe	0	0
			1	1		

- Molecule 3 is PALMITIC ACID (CCD ID: PLM) (formula: C₁₆H₃₂O₂) (labeled as "Ligand of Interest" by depositor).



Mol	Chain	Residues	Atoms			ZeroOcc	AltConf
3	A	1	Total	C	O	0	1
			36	32	4		
3	B	1	Total	C	O	0	1
			36	32	4		

- Molecule 4 is (1R)-3-amino-1-{4-fluoro-3-[(2-propylpentyl)oxy]phenyl}propan-1-ol (CCD ID: W9A) (formula: C₁₇H₂₈FN₂O₂) (labeled as "Ligand of Interest" by depositor).



Mol	Chain	Residues	Atoms					ZeroOcc	AltConf
4	A	1	Total	C	F	N	O	0	0
			21	17	1	1	2		

Continued on next page...

Continued from previous page...

Mol	Chain	Residues	Atoms					ZeroOcc	AltConf
4	B	1	Total	C	F	N	O	0	0
			21	17	1	1	2		

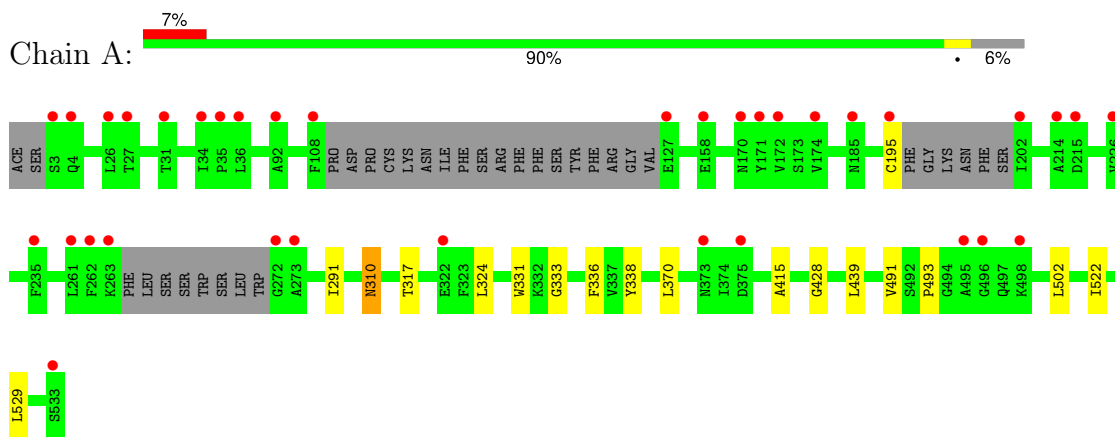
- Molecule 5 is water.

Mol	Chain	Residues	Atoms		ZeroOcc	AltConf
5	A	415	Total	O	0	0
			415	415		
5	B	436	Total	O	0	0
			436	436		

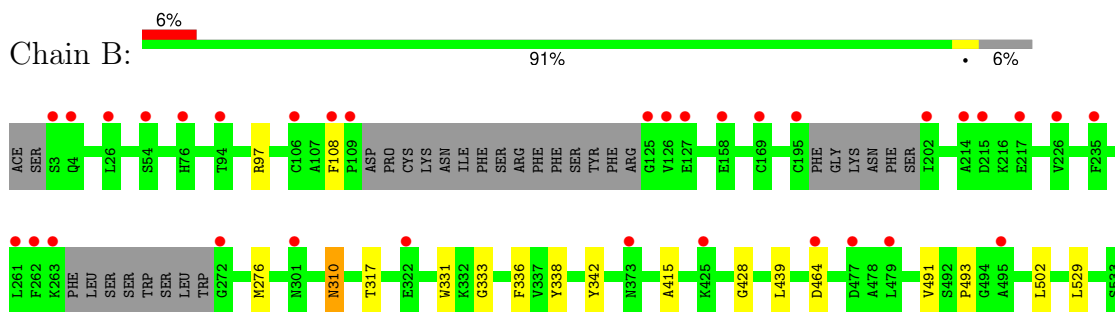
3 Residue-property plots [i](#)

These plots are drawn for all protein, RNA, DNA and oligosaccharide chains in the entry. The first graphic for a chain summarises the proportions of the various outlier classes displayed in the second graphic. The second graphic shows the sequence view annotated by issues in geometry and electron density. Residues are color-coded according to the number of geometric quality criteria for which they contain at least one outlier: green = 0, yellow = 1, orange = 2 and red = 3 or more. A red dot above a residue indicates a poor fit to the electron density ($RSRZ > 2$). Stretches of 2 or more consecutive residues without any outlier are shown as a green connector. Residues present in the sample, but not in the model, are shown in grey.

- Molecule 1: Retinoid isomerohydrolase



- Molecule 1: Retinoid isomerohydrolase



4 Data and refinement statistics

Property	Value	Source
Space group	P 65	Depositor
Cell constants a, b, c, α , β , γ	175.51Å 175.51Å 86.66Å 90.00° 90.00° 120.00°	Depositor
Resolution (Å)	47.88 – 1.95 47.88 – 1.95	Depositor EDS
% Data completeness (in resolution range)	99.7 (47.88-1.95) 99.7 (47.88-1.95)	Depositor EDS
R_{merge}	0.16	Depositor
R_{sym}	(Not available)	Depositor
$\langle I/\sigma(I) \rangle$ ¹	1.18 (at 1.95Å)	Xtriage
Refinement program	REFMAC 5.8.0258	Depositor
R, R_{free}	0.194 , 0.211 0.199 , 0.217	Depositor DCC
R_{free} test set	5639 reflections (5.10%)	wwPDB-VP
Wilson B-factor (Å ²)	32.8	Xtriage
Anisotropy	0.236	Xtriage
Bulk solvent k_{sol} (e/Å ³), B_{sol} (Å ²)	0.35 , 34.8	EDS
L-test for twinning ²	$\langle L \rangle = 0.50$, $\langle L^2 \rangle = 0.34$	Xtriage
Estimated twinning fraction	0.024 for h,-h-k,-l	Xtriage
F_o, F_c correlation	0.96	EDS
Total number of atoms	9220	wwPDB-VP
Average B, all atoms (Å ²)	40.0	wwPDB-VP

Xtriage's analysis on translational NCS is as follows: *The largest off-origin peak in the Patterson function is 2.66% of the height of the origin peak. No significant pseudotranslation is detected.*

¹Intensities estimated from amplitudes.

²Theoretical values of $\langle |L| \rangle$, $\langle L^2 \rangle$ for acentric reflections are 0.5, 0.333 respectively for untwinned datasets, and 0.375, 0.2 for perfectly twinned datasets.

5 Model quality [i](#)

5.1 Standard geometry [i](#)

Bond lengths and bond angles in the following residue types are not validated in this section: PLM, W9A, FE2

The Z score for a bond length (or angle) is the number of standard deviations the observed value is removed from the expected value. A bond length (or angle) with $|Z| > 5$ is considered an outlier worth inspection. RMSZ is the root-mean-square of all Z scores of the bond lengths (or angles).

Mol	Chain	Bond lengths		Bond angles	
		RMSZ	$\# Z > 5$	RMSZ	$\# Z > 5$
1	A	0.99	1/4227 (0.0%)	1.20	1/5750 (0.0%)
1	B	0.98	0/4260	1.20	1/5792 (0.0%)
All	All	0.99	1/8487 (0.0%)	1.20	2/11542 (0.0%)

All (1) bond length outliers are listed below:

Mol	Chain	Res	Type	Atoms	Z	Observed(Å)	Ideal(Å)
1	A	522	ILE	N-CA	5.04	1.49	1.45

All (2) bond angle outliers are listed below:

Mol	Chain	Res	Type	Atoms	Z	Observed(°)	Ideal(°)
1	B	333	GLY	CA-C-O	-5.39	117.96	122.33
1	A	333	GLY	CA-C-O	-5.34	118.00	122.33

There are no chirality outliers.

There are no planarity outliers.

5.2 Too-close contacts [i](#)

In the following table, the Non-H and H(model) columns list the number of non-hydrogen atoms and hydrogen atoms in the chain respectively. The H(added) column lists the number of hydrogen atoms added and optimized by MolProbity. The Clashes column lists the number of clashes within the asymmetric unit, whereas Symm-Clashes lists symmetry-related clashes.

Mol	Chain	Non-H	H(model)	H(added)	Clashes	Symm-Clashes
1	A	4109	0	4005	11	0
1	B	4144	0	4038	10	0
2	A	1	0	0	0	0

Continued on next page...

Continued from previous page...

Mol	Chain	Non-H	H(model)	H(added)	Clashes	Symm-Clashes
2	B	1	0	0	0	0
3	A	36	0	62	7	0
3	B	36	0	62	4	0
4	A	21	0	0	0	0
4	B	21	0	0	0	0
5	A	415	0	0	0	0
5	B	436	0	0	0	0
All	All	9220	0	8167	32	0

The all-atom clashscore is defined as the number of clashes found per 1000 atoms (including hydrogen atoms). The all-atom clashscore for this structure is 2.

All (32) close contacts within the same asymmetric unit are listed below, sorted by their clash magnitude.

Atom-1	Atom-2	Interatomic distance (Å)	Clash overlap (Å)
3:A:602[A]:PLM:HF2	3:A:602[A]:PLM:CB	2.11	0.80
3:B:602[A]:PLM:HF2	3:B:602[A]:PLM:HB1	1.64	0.79
3:A:602[A]:PLM:HF2	3:A:602[A]:PLM:HB1	1.68	0.74
1:A:291[B]:ILE:HD13	1:A:324:LEU:HD12	1.74	0.69
3:A:602[A]:PLM:CB	3:A:602[A]:PLM:CF	2.69	0.68
3:A:602[A]:PLM:HB1	3:A:602[A]:PLM:CF	2.29	0.62
3:A:602[A]:PLM:HF2	3:A:602[A]:PLM:HB2	1.81	0.60
3:B:602[A]:PLM:H41	3:B:602[A]:PLM:O2	2.01	0.58
1:B:310:ASN:HB2	1:B:331:TRP:HB2	1.91	0.53
1:A:195[B]:CYS:O	1:A:195[B]:CYS:SG	2.68	0.52
1:A:310:ASN:HB2	1:A:331:TRP:HB2	1.92	0.51
3:B:602[B]:PLM:HB2	3:B:602[B]:PLM:HG2	1.93	0.50
1:A:291[B]:ILE:CD1	1:A:324:LEU:HD12	2.41	0.50
1:B:491:VAL:HG12	1:B:493:PRO:HD3	1.94	0.50
1:A:491:VAL:HG12	1:A:493:PRO:HD3	1.95	0.49
1:B:276[B]:MET:HG2	1:B:342:TYR:OH	2.13	0.48
3:A:602[A]:PLM:CF	3:A:602[A]:PLM:HB2	2.43	0.47
3:B:602[B]:PLM:HG2	3:B:602[B]:PLM:CB	2.47	0.45
1:A:529:LEU:C	1:A:529:LEU:HD12	2.43	0.44
3:A:602[A]:PLM:H61	3:A:602[A]:PLM:H32	1.82	0.44
1:B:97:ARG:NH1	1:B:108:PHE:O	2.51	0.44
1:B:529:LEU:C	1:B:529:LEU:HD12	2.43	0.43
1:B:415:ALA:HB3	1:B:439:LEU:HB2	2.01	0.42
1:A:415:ALA:HB3	1:A:439:LEU:HB2	2.01	0.42
1:A:502:LEU:C	1:A:502:LEU:HD13	2.44	0.42
1:A:291[B]:ILE:HD11	1:A:370:LEU:HD23	2.02	0.42

Continued on next page...

Continued from previous page...

Atom-1	Atom-2	Interatomic distance (Å)	Clash overlap (Å)
1:B:336:PHE:CZ	1:B:338:TYR:CD2	3.08	0.42
1:B:502:LEU:C	1:B:502:LEU:HD13	2.44	0.42
1:A:317:THR:O	1:A:428:GLY:HA2	2.21	0.41
1:A:336:PHE:CZ	1:A:338:TYR:CD2	3.08	0.41
1:B:464[B]:ASP:O	1:B:464[B]:ASP:CG	2.63	0.41
1:B:317:THR:O	1:B:428:GLY:HA2	2.20	0.41

There are no symmetry-related clashes.

5.3 Torsion angles [i](#)

5.3.1 Protein backbone [i](#)

In the following table, the Percentiles column shows the percent Ramachandran outliers of the chain as a percentile score with respect to all X-ray entries followed by that with respect to entries of similar resolution.

The Analysed column shows the number of residues for which the backbone conformation was analysed, and the total number of residues.

Mol	Chain	Analysed	Favoured	Allowed	Outliers	Percentiles	
1	A	502/533 (94%)	491 (98%)	11 (2%)	0	100	100
1	B	506/533 (95%)	494 (98%)	12 (2%)	0	100	100
All	All	1008/1066 (95%)	985 (98%)	23 (2%)	0	100	100

There are no Ramachandran outliers to report.

5.3.2 Protein sidechains [i](#)

In the following table, the Percentiles column shows the percent sidechain outliers of the chain as a percentile score with respect to all X-ray entries followed by that with respect to entries of similar resolution.

The Analysed column shows the number of residues for which the sidechain conformation was analysed, and the total number of residues.

Mol	Chain	Analysed	Rotameric	Outliers	Percentiles	
1	A	455/474 (96%)	454 (100%)	1 (0%)	87	89
1	B	458/474 (97%)	457 (100%)	1 (0%)	87	89

Continued on next page...

Continued from previous page...

Mol	Chain	Analysed	Rotameric	Outliers	Percentiles	
All	All	913/948 (96%)	911 (100%)	2 (0%)	87	89

All (2) residues with a non-rotameric sidechain are listed below:

Mol	Chain	Res	Type
1	A	310	ASN
1	B	310	ASN

Sometimes sidechains can be flipped to improve hydrogen bonding and reduce clashes. All (10) such sidechains are listed below:

Mol	Chain	Res	Type
1	A	4	GLN
1	A	64	GLN
1	A	175	ASN
1	A	248	ASN
1	A	424	GLN
1	B	4	GLN
1	B	80	HIS
1	B	175	ASN
1	B	228	GLN
1	B	248	ASN

5.3.3 RNA [i](#)

There are no RNA molecules in this entry.

5.4 Non-standard residues in protein, DNA, RNA chains [i](#)

There are no non-standard protein/DNA/RNA residues in this entry.

5.5 Carbohydrates [i](#)

There are no oligosaccharides in this entry.

5.6 Ligand geometry [i](#)

Of 8 ligands modelled in this entry, 2 are monoatomic - leaving 6 for Mogul analysis.

In the following table, the Counts columns list the number of bonds (or angles) for which Mogul statistics could be retrieved, the number of bonds (or angles) that are observed in the model and the number of bonds (or angles) that are defined in the Chemical Component Dictionary. The Link column lists molecule types, if any, to which the group is linked. The Z score for a bond length (or angle) is the number of standard deviations the observed value is removed from the expected value. A bond length (or angle) with $|Z| > 2$ is considered an outlier worth inspection. RMSZ is the root-mean-square of all Z scores of the bond lengths (or angles).

Mol	Type	Chain	Res	Link	Bond lengths			Bond angles		
					Counts	RMSZ	$\# Z > 2$	Counts	RMSZ	$\# Z > 2$
3	PLM	A	602[B]	2	17,17,17	0.54	0	17,17,17	0.48	0
3	PLM	A	602[A]	2	17,17,17	0.56	0	17,17,17	0.47	0
4	W9A	B	603	-	21,21,21	0.18	0	25,26,26	0.30	0
4	W9A	A	603	-	21,21,21	0.16	0	25,26,26	0.35	0
3	PLM	B	602[B]	2	17,17,17	0.53	0	17,17,17	0.49	0
3	PLM	B	602[A]	2	17,17,17	0.55	0	17,17,17	0.50	0

In the following table, the Chirals column lists the number of chiral outliers, the number of chiral centers analysed, the number of these observed in the model and the number defined in the Chemical Component Dictionary. Similar counts are reported in the Torsion and Rings columns. '-' means no outliers of that kind were identified.

Mol	Type	Chain	Res	Link	Chirals	Torsions	Rings
3	PLM	A	602[B]	2	-	9/15/15/15	-
3	PLM	A	602[A]	2	-	6/15/15/15	-
4	W9A	B	603	-	-	5/18/18/18	0/1/1/1
4	W9A	A	603	-	-	6/18/18/18	0/1/1/1
3	PLM	B	602[B]	2	-	9/15/15/15	-
3	PLM	B	602[A]	2	-	5/15/15/15	-

There are no bond length outliers.

There are no bond angle outliers.

There are no chirality outliers.

All (40) torsion outliers are listed below:

Mol	Chain	Res	Type	Atoms
4	A	603	W9A	C6-C7-O1-C8
3	A	602[A]	PLM	C1-C2-C3-C4
3	B	602[A]	PLM	CB-CC-CD-CE
3	A	602[A]	PLM	CB-CC-CD-CE
3	B	602[A]	PLM	C1-C2-C3-C4
3	A	602[A]	PLM	C6-C7-C8-C9

Continued on next page...

Continued from previous page...

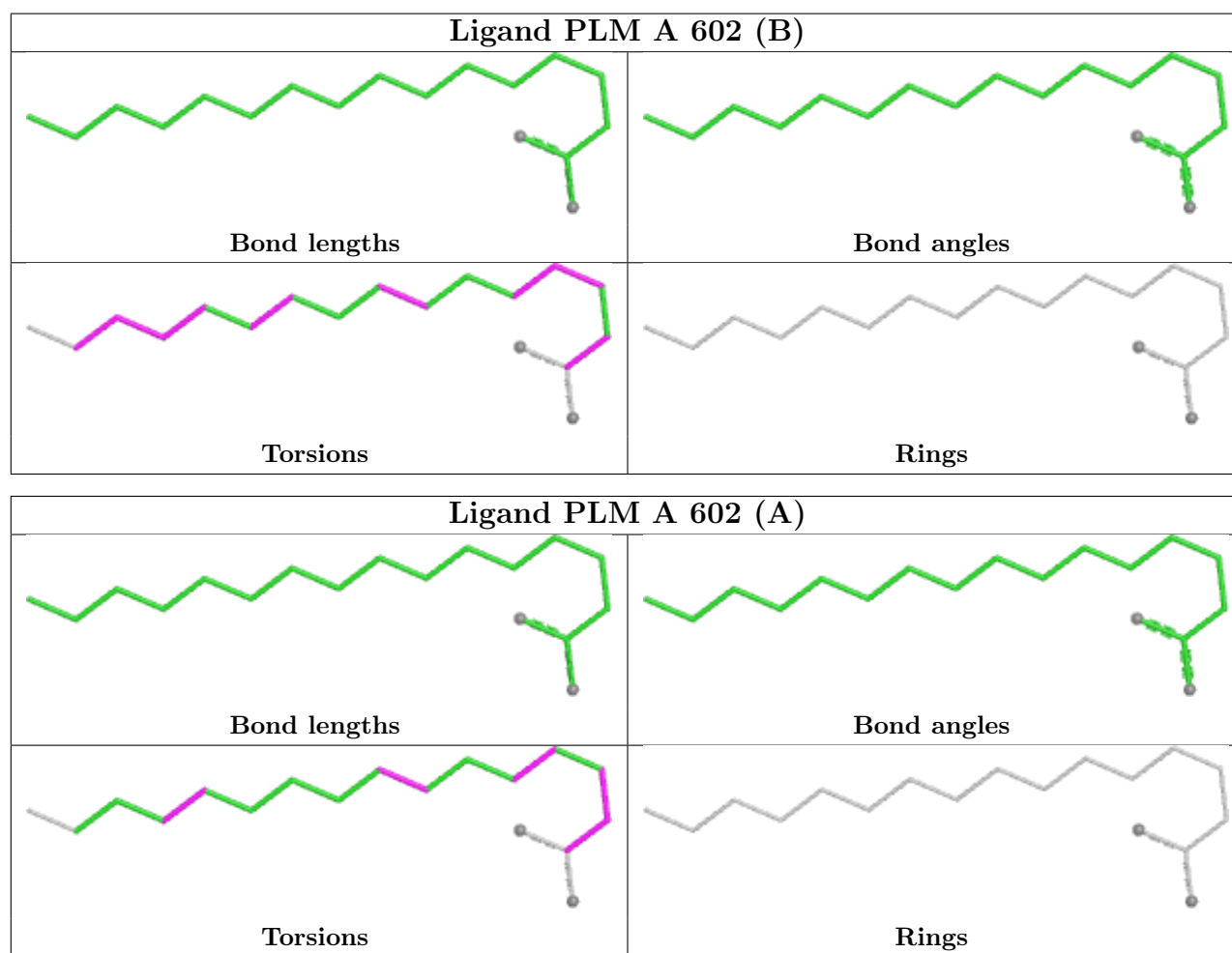
Mol	Chain	Res	Type	Atoms
3	B	602[B]	PLM	C6-C7-C8-C9
3	A	602[B]	PLM	CC-CD-CE-CF
3	B	602[B]	PLM	CC-CD-CE-CF
4	B	603	W9A	C9-C13-C14-C15
4	A	603	W9A	C9-C13-C14-C15
3	A	602[B]	PLM	C9-CA-CB-CC
3	A	602[B]	PLM	CD-CE-CF-CG
3	B	602[B]	PLM	CD-CE-CF-CG
3	A	602[B]	PLM	C2-C3-C4-C5
3	A	602[B]	PLM	C6-C7-C8-C9
4	B	603	W9A	C6-C7-O1-C8
3	B	602[B]	PLM	C2-C3-C4-C5
3	A	602[B]	PLM	CB-CC-CD-CE
3	B	602[B]	PLM	C1-C2-C3-C4
4	B	603	W9A	O-C2-C3-C4
3	B	602[A]	PLM	C9-CA-CB-CC
3	A	602[A]	PLM	O2-C1-C2-C3
4	B	603	W9A	O-C2-C3-C16
3	A	602[B]	PLM	O2-C1-C2-C3
3	A	602[A]	PLM	C3-C4-C5-C6
3	A	602[A]	PLM	O1-C1-C2-C3
4	A	603	W9A	O-C2-C3-C4
3	B	602[A]	PLM	C4-C5-C6-C7
3	B	602[A]	PLM	C5-C6-C7-C8
3	A	602[B]	PLM	O1-C1-C2-C3
3	A	602[B]	PLM	C3-C4-C5-C6
3	B	602[B]	PLM	C9-CA-CB-CC
3	B	602[B]	PLM	C3-C4-C5-C6
4	A	603	W9A	O-C2-C3-C16
3	B	602[B]	PLM	O1-C1-C2-C3
3	B	602[B]	PLM	O2-C1-C2-C3
4	B	603	W9A	C1-C2-C3-C4
4	A	603	W9A	C1-C2-C3-C4
4	A	603	W9A	C16-C7-O1-C8

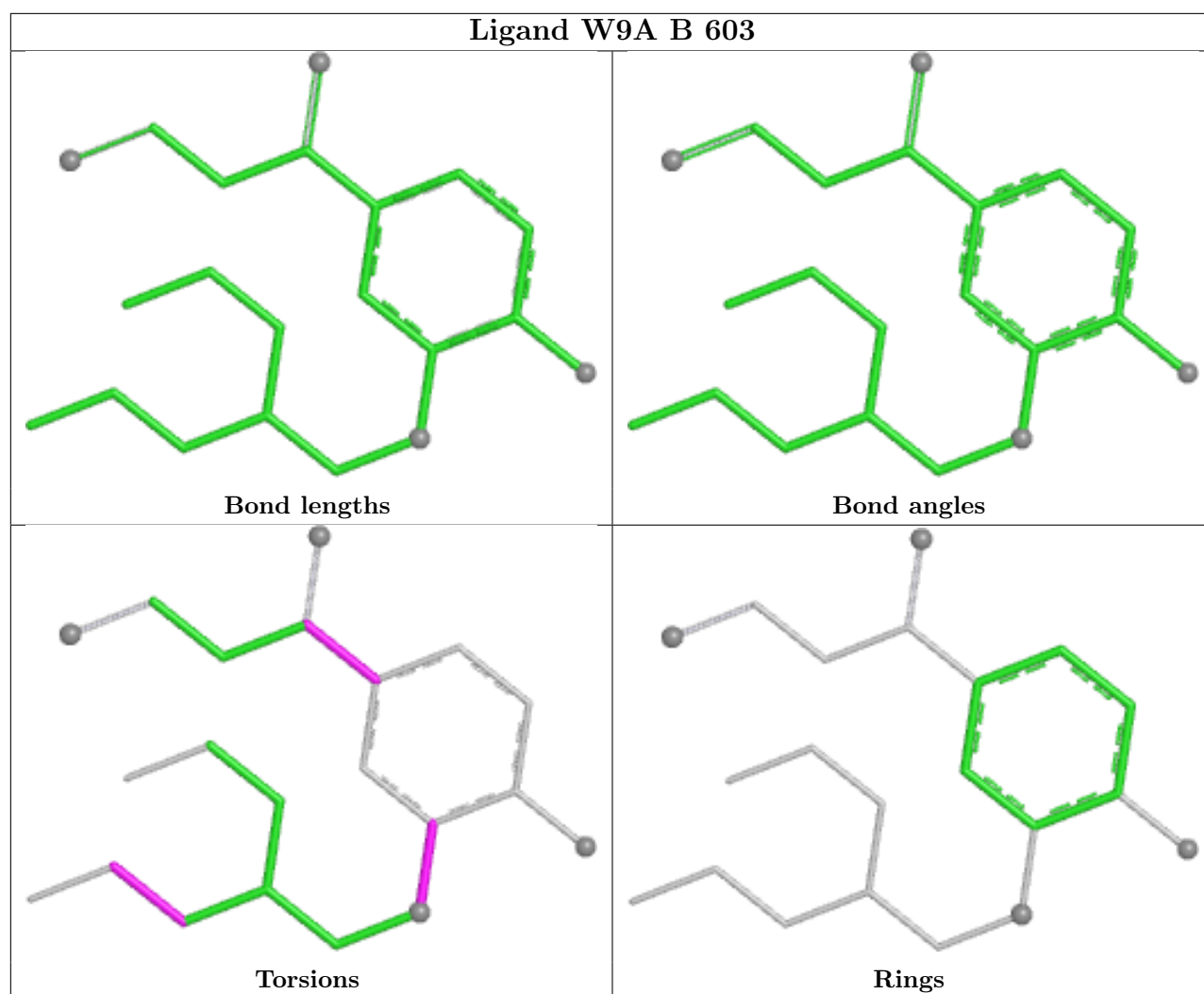
There are no ring outliers.

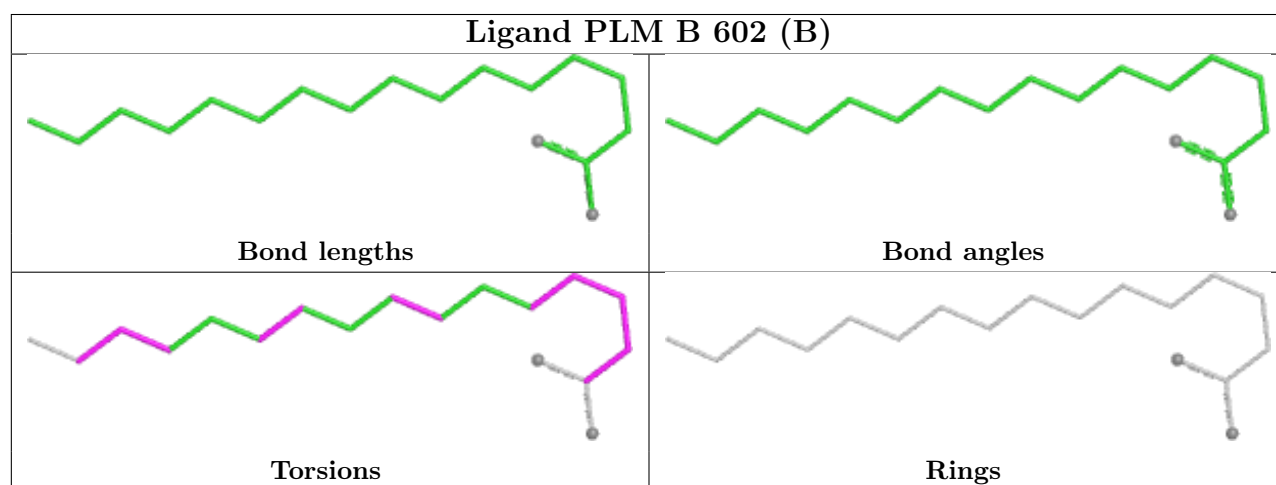
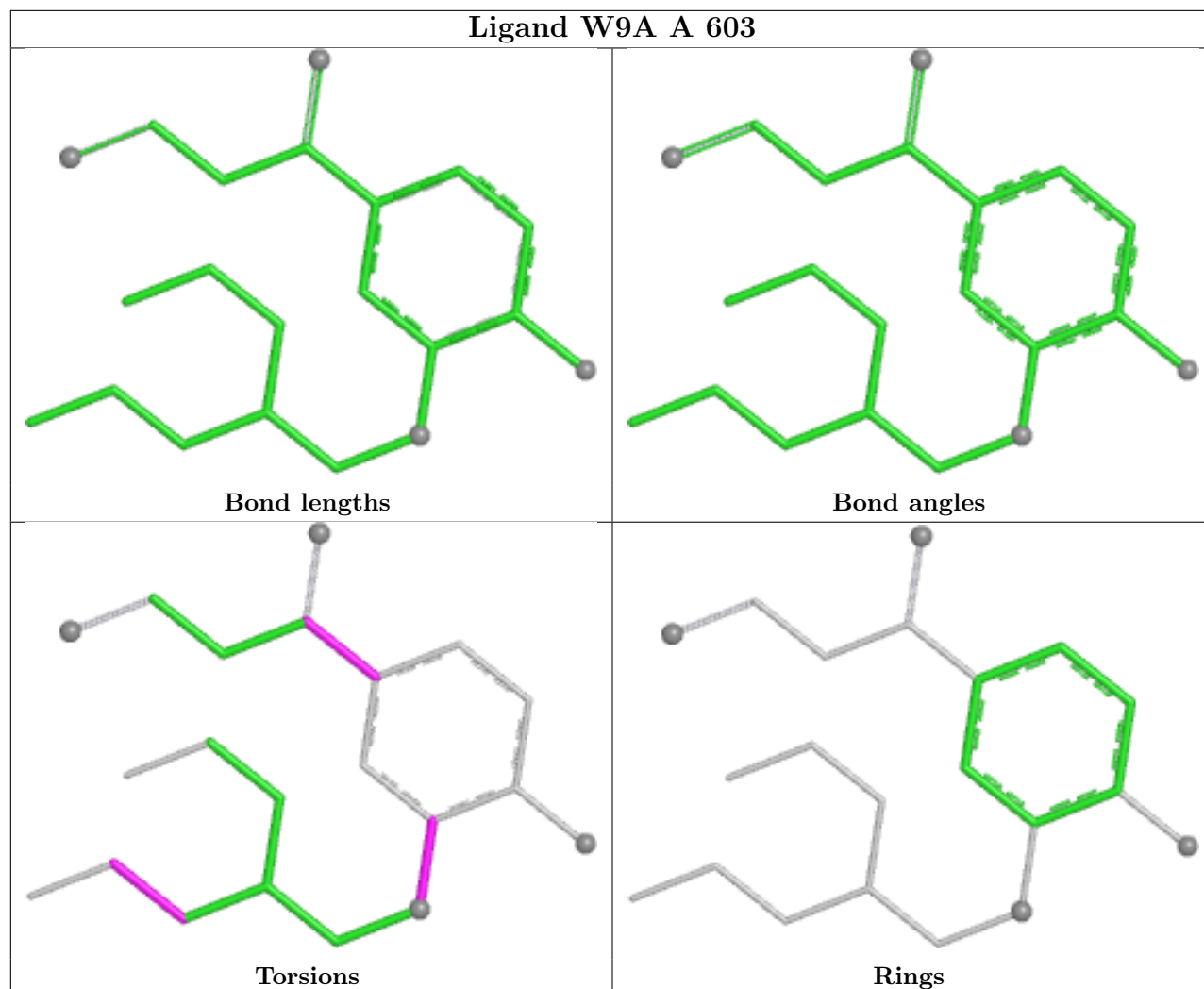
3 monomers are involved in 11 short contacts:

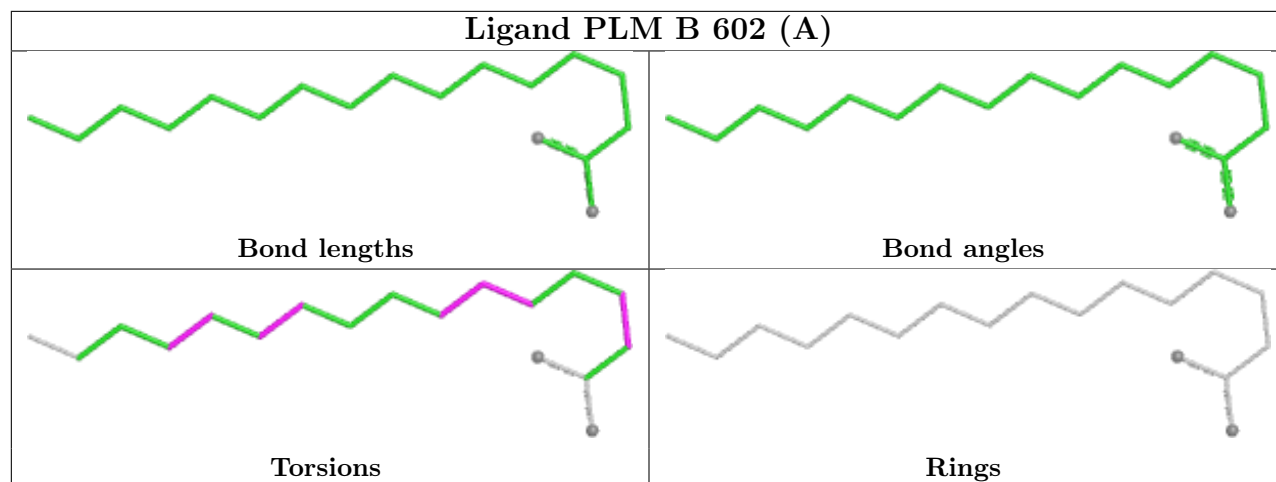
Mol	Chain	Res	Type	Clashes	Symm-Clashes
3	A	602[A]	PLM	7	0
3	B	602[B]	PLM	2	0
3	B	602[A]	PLM	2	0

The following is a two-dimensional graphical depiction of Mogul quality analysis of bond lengths, bond angles, torsion angles, and ring geometry for all instances of the Ligand of Interest. In addition, ligands with molecular weight > 250 and outliers as shown on the validation Tables will also be included. For torsion angles, if less than 5% of the Mogul distribution of torsion angles is within 10 degrees of the torsion angle in question, then that torsion angle is considered an outlier. Any bond that is central to one or more torsion angles identified as an outlier by Mogul will be highlighted in the graph. For rings, the root-mean-square deviation (RMSD) between the ring in question and similar rings identified by Mogul is calculated over all ring torsion angles. If the average RMSD is greater than 60 degrees and the minimal RMSD between the ring in question and any Mogul-identified rings is also greater than 60 degrees, then that ring is considered an outlier. The outliers are highlighted in purple. The color gray indicates Mogul did not find sufficient equivalents in the CSD to analyse the geometry.









5.7 Other polymers [i](#)

There are no such residues in this entry.

5.8 Polymer linkage issues [i](#)

There are no chain breaks in this entry.

6 Fit of model and data

6.1 Protein, DNA and RNA chains

In the following table, the column labelled ‘#RSRZ > 2’ contains the number (and percentage) of RSRZ outliers, followed by percent RSRZ outliers for the chain as percentile scores relative to all X-ray entries and entries of similar resolution. The OWAB column contains the minimum, median, 95th percentile and maximum values of the occupancy-weighted average B-factor per residue. The column labelled ‘Q < 0.9’ lists the number of (and percentage) of residues with an average occupancy less than 0.9.

Mol	Chain	Analysed	<RSRZ>	#RSRZ>2	OWAB(Å ²)	Q<0.9
1	A	499/533 (93%)	0.58	35 (7%) 22 26	15, 38, 57, 82	12 (2%)
1	B	502/533 (94%)	0.45	33 (6%) 24 28	15, 37, 53, 84	13 (2%)
All	All	1001/1066 (93%)	0.52	68 (6%) 23 27	15, 38, 56, 84	25 (2%)

All (68) RSRZ outliers are listed below:

Mol	Chain	Res	Type	RSRZ
1	B	126	VAL	5.7
1	A	108	PHE	5.3
1	A	261	LEU	5.2
1	B	261	LEU	5.1
1	A	262	PHE	5.1
1	B	108	PHE	5.0
1	B	262	PHE	5.0
1	B	125	GLY	4.3
1	A	35	PRO	4.3
1	A	272	GLY	4.2
1	A	533	SER	4.1
1	B	109	PRO	4.1
1	B	235	PHE	4.0
1	A	26	LEU	3.7
1	A	214	ALA	3.6
1	B	202	ILE	3.6
1	B	263	LYS	3.5
1	A	202	ILE	3.5
1	A	263	LYS	3.4
1	B	373	ASN	3.3
1	B	272	GLY	3.3
1	B	495	ALA	3.2
1	A	195[A]	CYS	3.2
1	A	31[A]	THR	3.1

Continued on next page...

Continued from previous page...

Mol	Chain	Res	Type	RSRZ
1	A	495	ALA	3.1
1	A	127	GLU	3.1
1	A	4	GLN	3.0
1	A	322	GLU	2.9
1	B	226	VAL	2.8
1	B	477	ASP	2.8
1	A	496	GLY	2.8
1	B	26	LEU	2.8
1	B	195[A]	CYS	2.8
1	A	170	ASN	2.7
1	A	235	PHE	2.7
1	A	215	ASP	2.6
1	A	226	VAL	2.6
1	A	375	ASP	2.5
1	B	214	ALA	2.4
1	A	498	LYS	2.4
1	B	215	ASP	2.4
1	A	27	THR	2.4
1	B	76	HIS	2.4
1	A	171	TYR	2.3
1	A	34	ILE	2.3
1	B	3	SER	2.3
1	B	54	SER	2.3
1	A	373	ASN	2.3
1	A	3	SER	2.3
1	A	172	VAL	2.3
1	B	127	GLU	2.2
1	A	174	VAL	2.2
1	B	106[A]	CYS	2.2
1	A	92	ALA	2.2
1	A	185	ASN	2.1
1	B	4	GLN	2.1
1	B	158	GLU	2.1
1	B	301	ASN	2.1
1	B	464[A]	ASP	2.1
1	B	425[A]	LYS	2.1
1	A	36	LEU	2.1
1	B	217	GLU	2.0
1	B	322	GLU	2.0
1	B	169	CYS	2.0
1	B	479	LEU	2.0
1	A	273	ALA	2.0

Continued on next page...

Continued from previous page...

Mol	Chain	Res	Type	RSRZ
1	A	158	GLU	2.0
1	B	94	THR	2.0

6.2 Non-standard residues in protein, DNA, RNA chains [i](#)

There are no non-standard protein/DNA/RNA residues in this entry.

6.3 Carbohydrates [i](#)

There are no oligosaccharides in this entry.

6.4 Ligands [i](#)

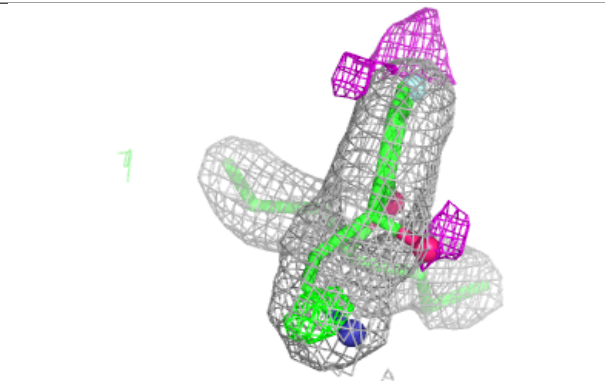
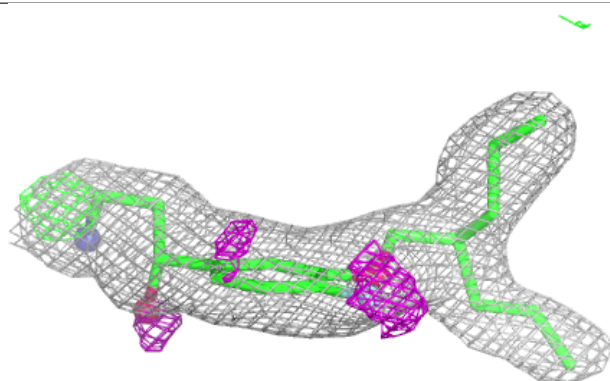
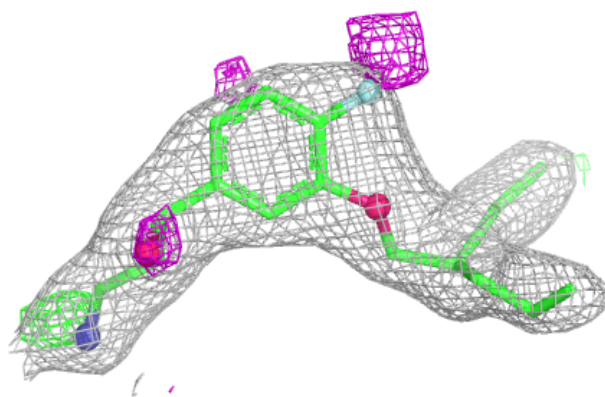
In the following table, the Atoms column lists the number of modelled atoms in the group and the number defined in the chemical component dictionary. The B-factors column lists the minimum, median, 95th percentile and maximum values of B factors of atoms in the group. The column labelled 'Q< 0.9' lists the number of atoms with occupancy less than 0.9.

Mol	Type	Chain	Res	Atoms	RSCC	RSR	B-factors(Å ²)	Q<0.9
4	W9A	A	603	21/21	0.87	0.18	50,53,57,57	0
4	W9A	B	603	21/21	0.89	0.15	45,49,52,52	0
3	PLM	A	602[A]	18/18	0.93	0.17	43,45,46,46	18
3	PLM	A	602[B]	18/18	0.93	0.17	55,55,57,58	18
3	PLM	B	602[A]	18/18	0.94	0.17	43,46,47,48	18
3	PLM	B	602[B]	18/18	0.94	0.17	45,45,48,48	18
2	FE2	A	601	1/1	1.00	0.01	30,30,30,30	0
2	FE2	B	601	1/1	1.00	0.01	28,28,28,28	0

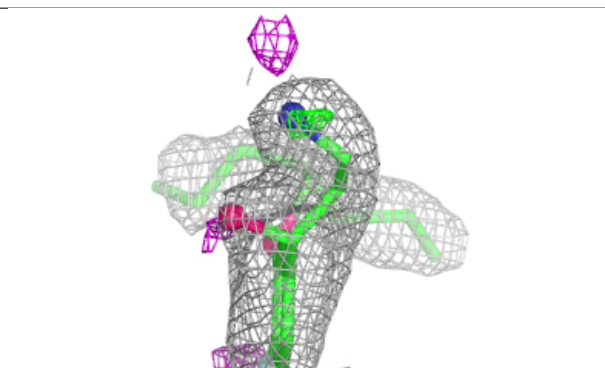
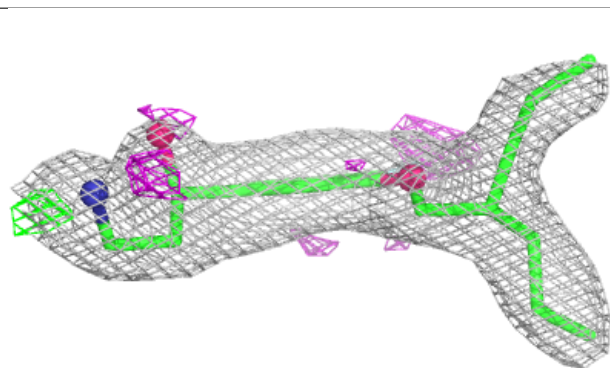
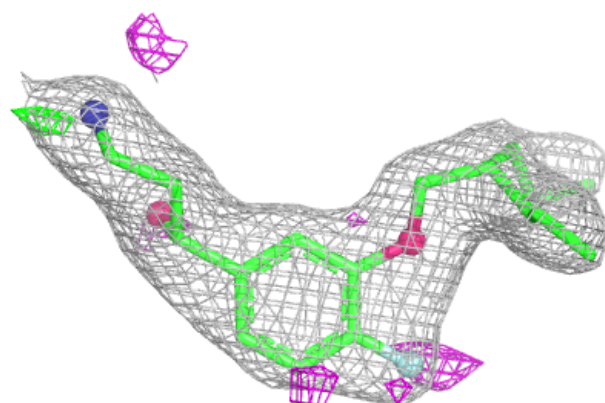
The following is a graphical depiction of the model fit to experimental electron density of all instances of the Ligand of Interest. In addition, ligands with molecular weight > 250 and outliers as shown on the geometry validation Tables will also be included. Each fit is shown from different orientation to approximate a three-dimensional view.

Electron density around W9A A 603:

$2mF_o-DF_c$ (at 0.7 rmsd) in gray
 mF_o-DF_c (at 3 rmsd) in purple (negative)
and green (positive)

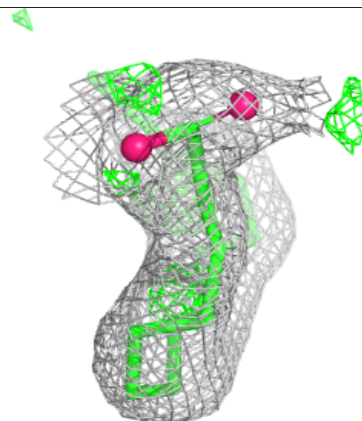
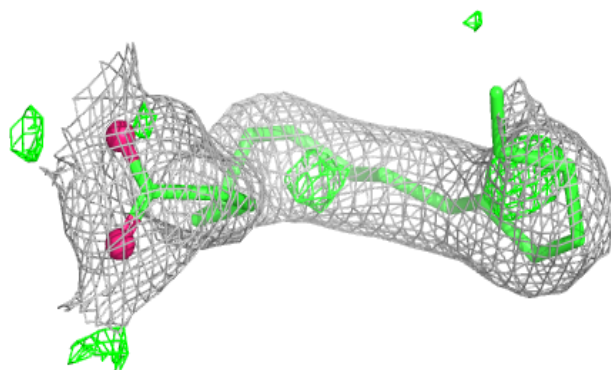
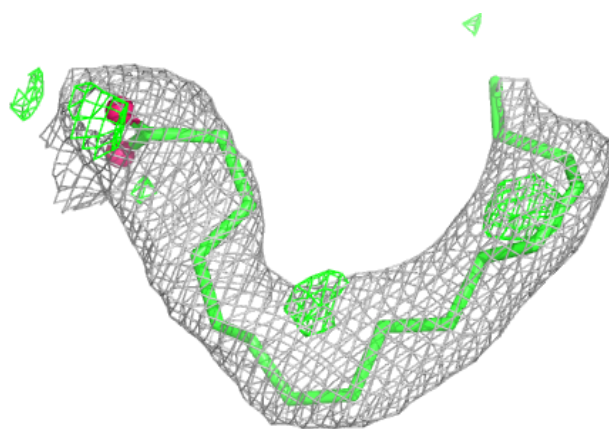
**Electron density around W9A B 603:**

$2mF_o-DF_c$ (at 0.7 rmsd) in gray
 mF_o-DF_c (at 3 rmsd) in purple (negative)
and green (positive)

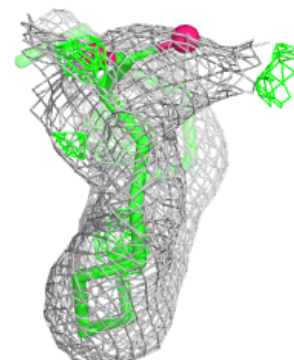
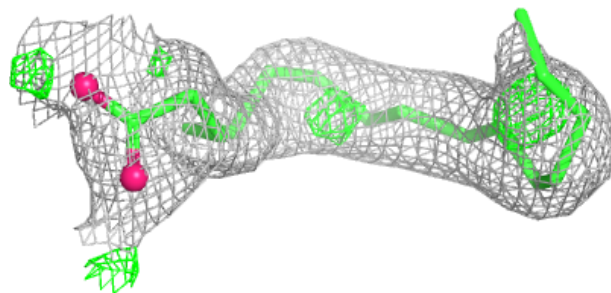
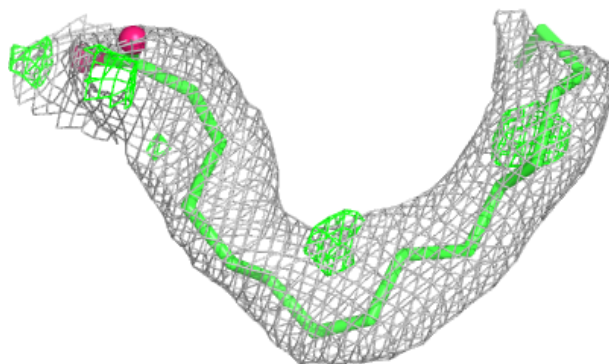


Electron density around PLM A 602 (A):

$2mF_o-DF_c$ (at 0.7 rmsd) in gray
 mF_o-DF_c (at 3 rmsd) in purple (negative)
and green (positive)

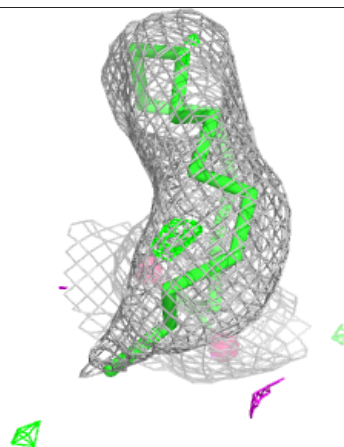
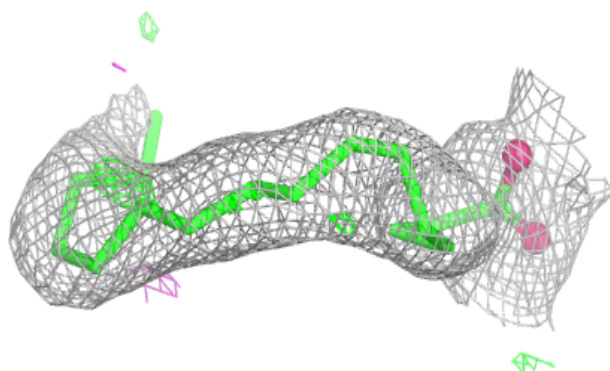
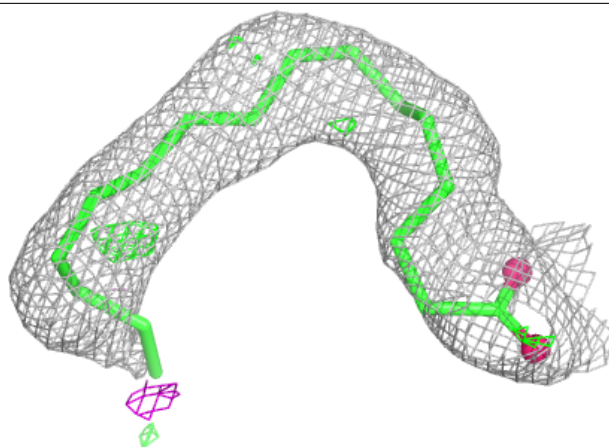
**Electron density around PLM A 602 (B):**

$2mF_o-DF_c$ (at 0.7 rmsd) in gray
 mF_o-DF_c (at 3 rmsd) in purple (negative)
and green (positive)

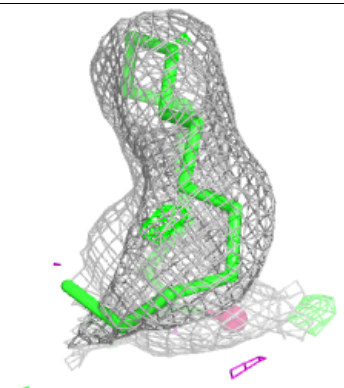
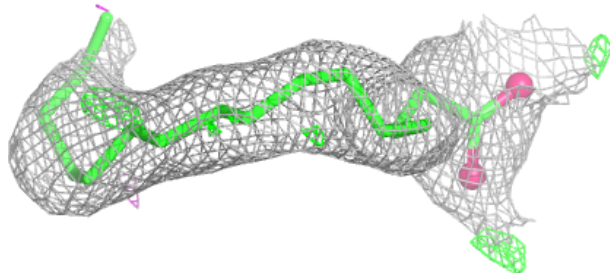
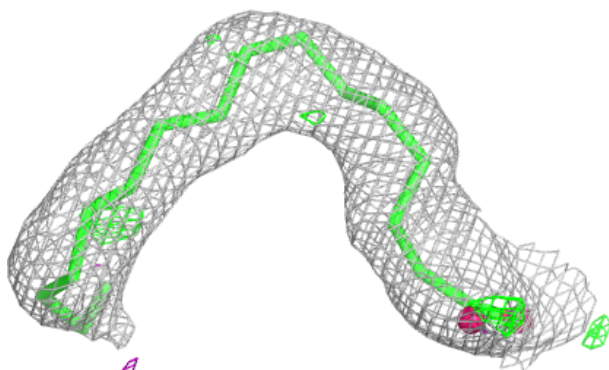


Electron density around PLM B 602 (A):

$2mF_o-DF_c$ (at 0.7 rmsd) in gray
 mF_o-DF_c (at 3 rmsd) in purple (negative)
and green (positive)

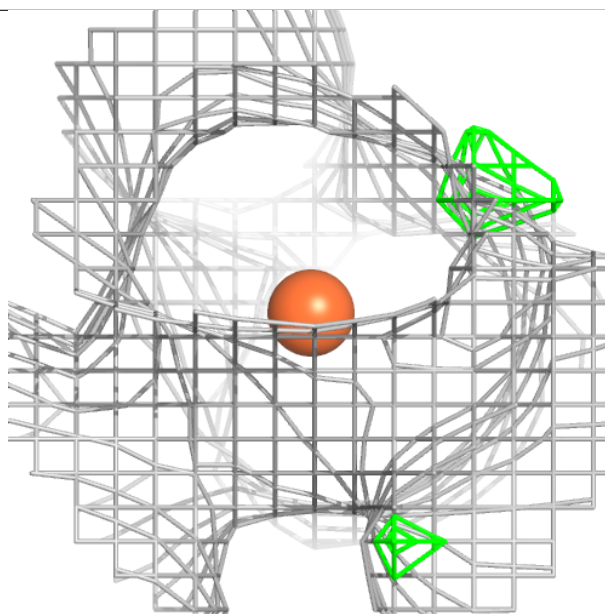
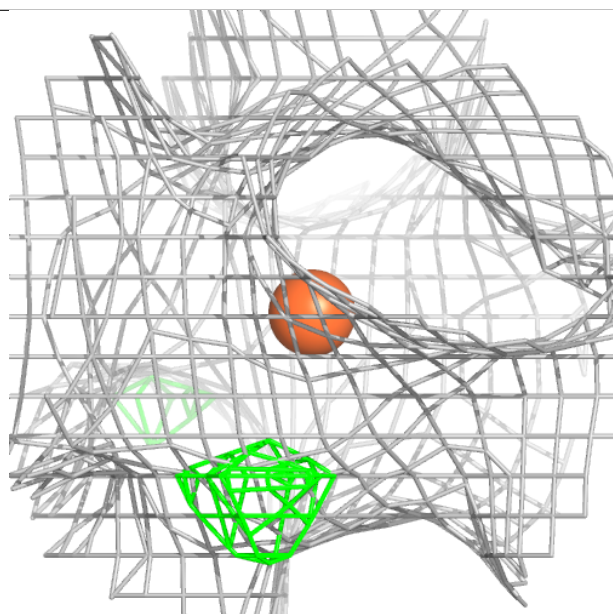
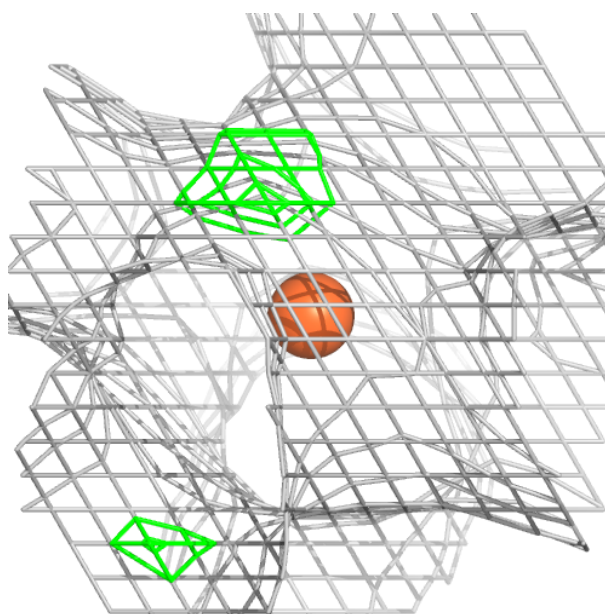
**Electron density around PLM B 602 (B):**

$2mF_o-DF_c$ (at 0.7 rmsd) in gray
 mF_o-DF_c (at 3 rmsd) in purple (negative)
and green (positive)



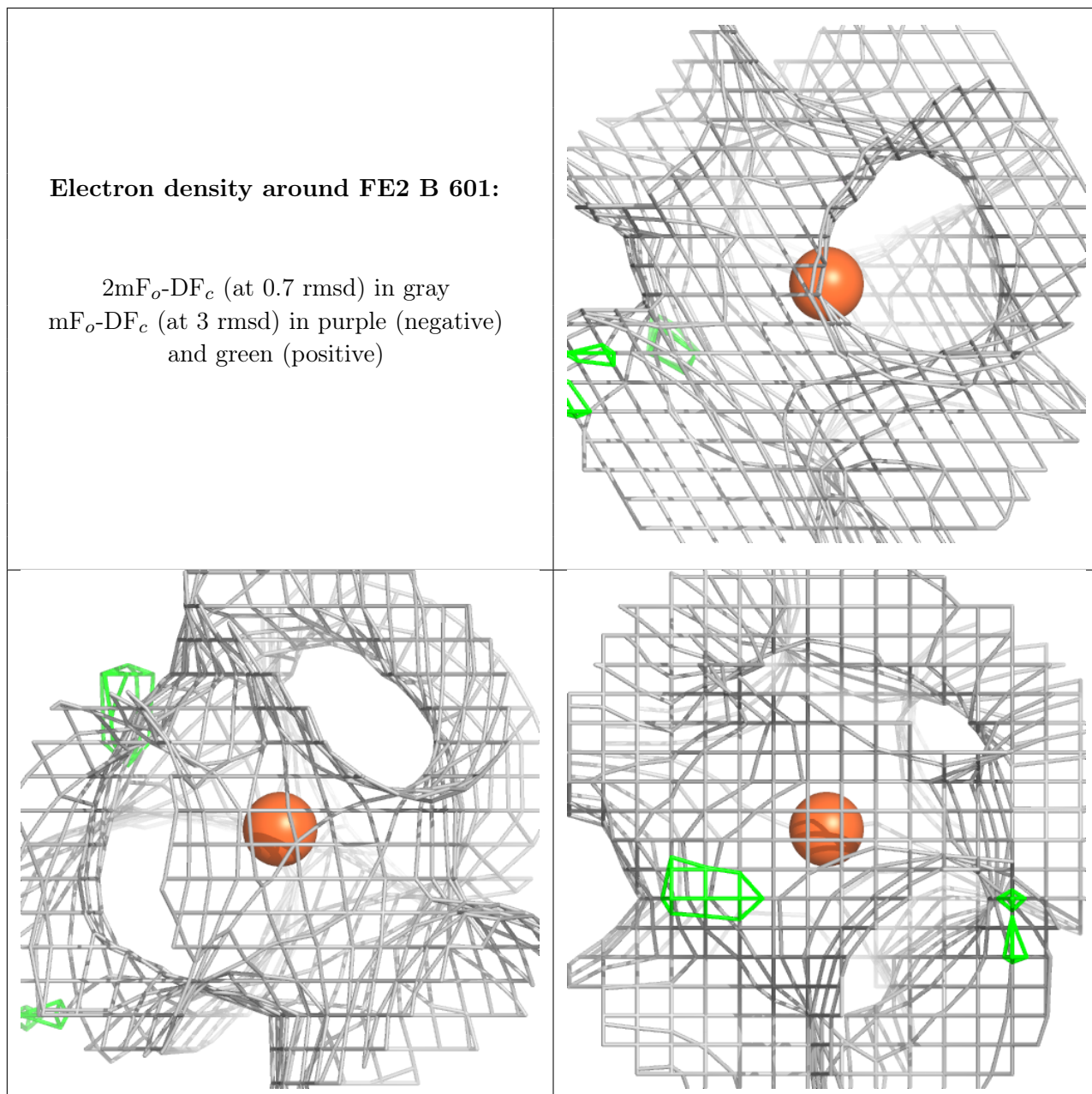
Electron density around FE2 A 601:

$2mF_o-DF_c$ (at 0.7 rmsd) in gray
 mF_o-DF_c (at 3 rmsd) in purple (negative)
and green (positive)



Electron density around FE2 B 601:

$2mF_o-DF_c$ (at 0.7 rmsd) in gray
 mF_o-DF_c (at 3 rmsd) in purple (negative)
and green (positive)



6.5 Other polymers ⓘ

There are no such residues in this entry.