



Full wwPDB EM Validation Report ⓘ

Mar 8, 2026 – 06:17 AM UTC

PDB ID : 8CAI / pdb_00008cai
EMDB ID : EMD-16526
Title : Streptomycin and Hygromycin B bound to the 30S body
Authors : Paternoga, H.; Crowe-McAuliffe, C.; Novacek, J.; Wilson, D.N.
Deposited on : 2023-01-24
Resolution : 2.08 Å(reported)

This is a Full wwPDB EM Validation Report for a publicly released PDB entry.

We welcome your comments at validation@mail.wwpdb.org

A user guide is available at

<https://www.wwpdb.org/validation/2017/EMValidationReportHelp>

with specific help available everywhere you see the ⓘ symbol.

The types of validation reports are described at

<http://www.wwpdb.org/validation/2017/FAQs#types>.

The following versions of software and data (see [references ⓘ](#)) were used in the production of this report:

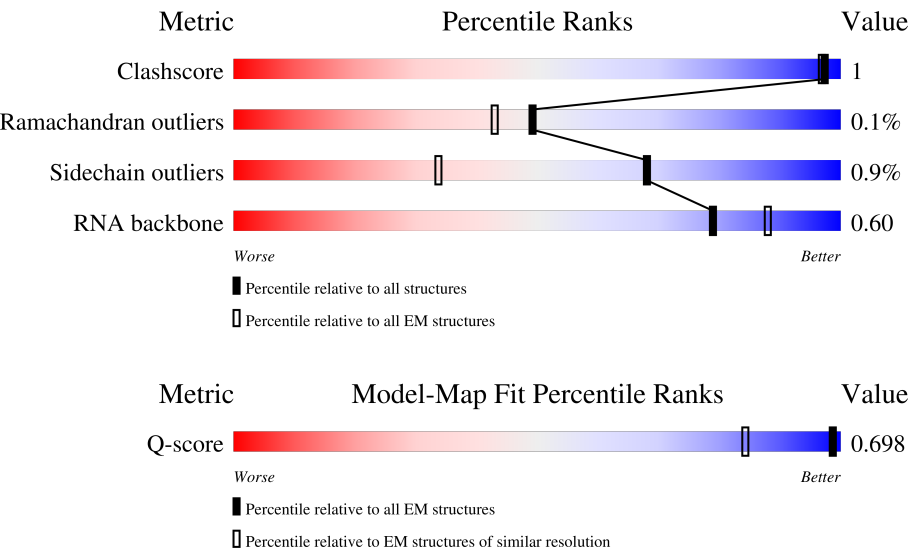
EMDB validation analysis : 0.0.1.dev132
Mogul : 2022.3.0, CSD as543be (2022)
MolProbity : 4-5-2 with Phenix2.0
Buster-report : wwPDB partial adaption of 1.1.7 (2018)
Percentile statistics : 20250101.v01 (using entries in the PDB archive January 1st 2025)
EM percentile statistics : 202505.v01 (Using data in the EMDB archive up until May 2025)
MapQ : 1.9.13
Ideal geometry (proteins) : Engh & Huber (2001)
Ideal geometry (DNA, RNA) : Parkinson et al. (1996)
Validation Pipeline (wwPDB-VP) : 2.49

1 Overall quality at a glance i

The following experimental techniques were used to determine the structure:
ELECTRON MICROSCOPY

The reported resolution of this entry is 2.08 Å.

Percentile scores (ranging between 0-100) for global validation metrics of the entry are shown in the following graphic. The table shows the number of entries on which the scores are based.



Metric	Whole archive (#Entries)	EM structures (#Entries)	Similar EM resolution (#Entries, resolution range(Å))
Clashscore	229148	23984	-
Ramachandran outliers	224038	23583	-
Sidechain outliers	223484	23102	-
RNA backbone	8273	3508	-
Q-score	-	25397	1976 (1.58 - 2.58)

The table below summarises the geometric issues observed across the polymeric chains and their fit to the map. The red, orange, yellow and green segments of the bar indicate the fraction of residues that contain outliers for ≥ 3 , 2, 1 and 0 types of geometric quality criteria respectively. A grey segment represents the fraction of residues that are not modelled. The numeric value for each fraction is indicated below the corresponding segment, with a dot representing fractions $\leq 5\%$. The upper red bar (where present) indicates the fraction of residues that have poor fit to the EM map (all-atom inclusion $< 40\%$). The numeric value is given above the bar.

Mol	Chain	Length	Quality of chain
1	A	1540	<div><div>5%</div><div>61%</div><div>11%</div><div>28%</div></div>
2	B	241	<div><div>78%</div><div>79%</div><div>7%</div><div>14%</div></div>
3	C	233	<div><div>22%</div><div>26%</div><div>73%</div></div>

Continued on next page...

Continued from previous page...

Mol	Chain	Length	Quality of chain
4	D	206	
5	E	167	
6	F	131	
7	H	130	
8	K	129	
9	L	124	
10	O	89	
11	P	82	
12	Q	84	
13	R	75	
14	T	87	
15	U	71	

2 Entry composition

There are 21 unique types of molecules in this entry. The entry contains 37814 atoms, of which 0 are hydrogens and 0 are deuteriums.

In the tables below, the AltConf column contains the number of residues with at least one atom in alternate conformation and the Trace column contains the number of residues modelled with at most 2 atoms.

- Molecule 1 is a RNA chain called 16S rRNA.

Mol	Chain	Residues	Atoms					AltConf	Trace
1	A	1114	Total	C	N	O	P	0	0
			23941	10680	4404	7743	1114		

- Molecule 2 is a protein called 30S ribosomal protein S2.

Mol	Chain	Residues	Atoms					AltConf	Trace
2	B	207	Total	C	N	O	S	0	0
			1616	1023	291	295	7		

- Molecule 3 is a protein called Small ribosomal subunit protein uS3.

Mol	Chain	Residues	Atoms					AltConf	Trace
3	C	64	Total	C	N	O	S	0	0
			511	321	101	87	2		

- Molecule 4 is a protein called Small ribosomal subunit protein uS4.

Mol	Chain	Residues	Atoms					AltConf	Trace
4	D	205	Total	C	N	O	S	0	0
			1643	1026	315	298	4		

- Molecule 5 is a protein called Small ribosomal subunit protein uS5.

Mol	Chain	Residues	Atoms					AltConf	Trace
5	E	154	Total	C	N	O	S	0	0
			1135	706	215	208	6		

- Molecule 6 is a protein called Small ribosomal subunit protein bS6, non-modified isoform.

Mol	Chain	Residues	Atoms					AltConf	Trace
6	F	103	Total	C	N	O	S	0	0
			839	530	151	151	7		

- Molecule 7 is a protein called Small ribosomal subunit protein uS8.

Mol	Chain	Residues	Atoms					AltConf	Trace
7	H	129	Total	C	N	O	S	0	0
			979	616	173	184	6		

- Molecule 8 is a protein called Small ribosomal subunit protein uS11.

Mol	Chain	Residues	Atoms					AltConf	Trace
8	K	117	Total	C	N	O	S	0	0
			877	540	173	161	3		

There is a discrepancy between the modelled and reference sequences:

Chain	Residue	Modelled	Actual	Comment	Reference
K	119	IAS	ASN	modified residue	UNP P0A7R9

- Molecule 9 is a protein called Small ribosomal subunit protein uS12.

Mol	Chain	Residues	Atoms					AltConf	Trace
9	L	117	Total	C	N	O	S	0	0
			910	562	185	158	5		

- Molecule 10 is a protein called Small ribosomal subunit protein uS15.

Mol	Chain	Residues	Atoms					AltConf	Trace
10	O	88	Total	C	N	O	S	0	0
			714	439	144	130	1		

- Molecule 11 is a protein called 30S ribosomal protein S16.

Mol	Chain	Residues	Atoms					AltConf	Trace
11	P	81	Total	C	N	O	S	0	0
			643	403	127	112	1		

- Molecule 12 is a protein called Small ribosomal subunit protein uS17.

Mol	Chain	Residues	Atoms					AltConf	Trace
12	Q	79	Total	C	N	O	S	0	0
			641	406	120	112	3		

- Molecule 13 is a protein called Small ribosomal subunit protein bS18.

Mol	Chain	Residues	Atoms				AltConf	Trace
13	R	54	Total	C	N	O	0	0
			446	283	85	78		

- Molecule 14 is a protein called 30S ribosomal protein S20.

Mol	Chain	Residues	Atoms					AltConf	Trace
14	T	86	Total	C	N	O	S	0	0
			670	414	138	115	3		

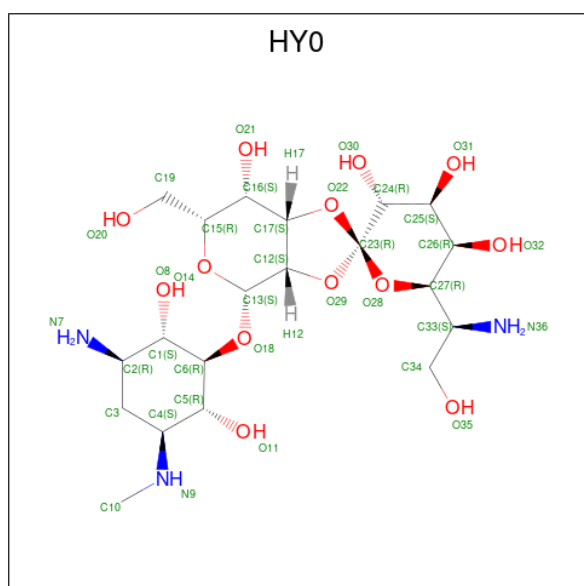
- Molecule 15 is a protein called Small ribosomal subunit protein bS21.

Mol	Chain	Residues	Atoms					AltConf	Trace
15	U	69	Total	C	N	O	S	0	0
			577	357	124	95	1		

- Molecule 16 is POTASSIUM ION (CCD ID: K) (formula: K).

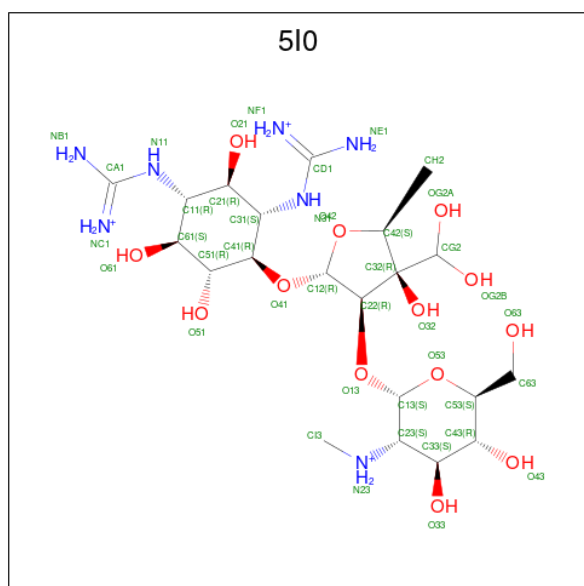
Mol	Chain	Residues	Atoms		AltConf
16	A	27	Total	K	0
			27	27	
16	D	1	Total	K	0
			1	1	
16	F	1	Total	K	0
			1	1	

- Molecule 17 is HYGROMYCIN B VARIANT (CCD ID: HY0) (formula: C₂₀H₃₇N₃O₁₃) (labeled as "Ligand of Interest" by depositor).



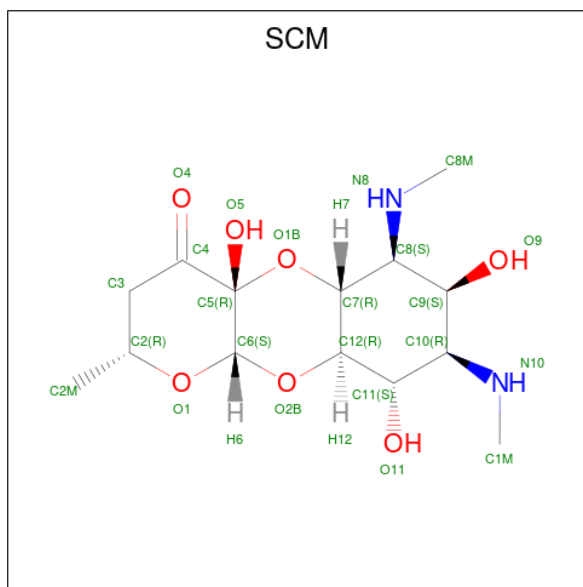
Mol	Chain	Residues	Atoms				AltConf
17	A	1	Total 36	C 20	N 3	O 13	0
17	A	1	Total 36	C 20	N 3	O 13	0
17	A	1	Total 36	C 20	N 3	O 13	0

- Molecule 18 is [(2 {S},3 {S},4 {S},5 {R},6 {S})-2-[(2 {R},3 {R},4 {R},5 {S})-2-[(1 {R},2 {S},3 {R},4 {R},5 {S},6 {R})-2,4-bis[[azaniumylidene(azanyl)methyl]amino]-3,5,6-tris(oxidanyl)cyclohexyl]oxy-4-[bis(oxidanyl)methyl]-5-methyl-4-oxidanyl-oxolan-3-yl]oxy-6-(hydroxymethyl)-4,5-bis(oxidanyl)oxan-3-yl]-methyl-azanium (CCD ID: 5I0) (formula: C₂₁H₄₄N₇O₁₃) (labeled as "Ligand of Interest" by depositor).



Mol	Chain	Residues	Atoms				AltConf
18	A	1	Total	C	N	O	0
			41	21	7	13	

- Molecule 19 is SPECTINOMYCIN (CCD ID: SCM) (formula: $\text{C}_{14}\text{H}_{24}\text{N}_2\text{O}_7$) (labeled as "Ligand of Interest" by depositor).



Mol	Chain	Residues	Atoms				AltConf
19	A	1	Total	C	N	O	0
			23	14	2	7	

- Molecule 20 is MAGNESIUM ION (CCD ID: MG) (formula: Mg).

Mol	Chain	Residues	Atoms		AltConf
20	A	55	Total	Mg	0
			55	55	

- Molecule 21 is water.

Mol	Chain	Residues	Atoms		AltConf
21	A	1270	Total	O	0
			1270	1270	
21	B	1	Total	O	0
			1	1	
21	C	2	Total	O	0
			2	2	
21	D	6	Total	O	0
			6	6	
21	E	9	Total	O	0
			9	9	
21	F	1	Total	O	0
			1	1	
21	H	24	Total	O	0
			24	24	

Continued on next page...

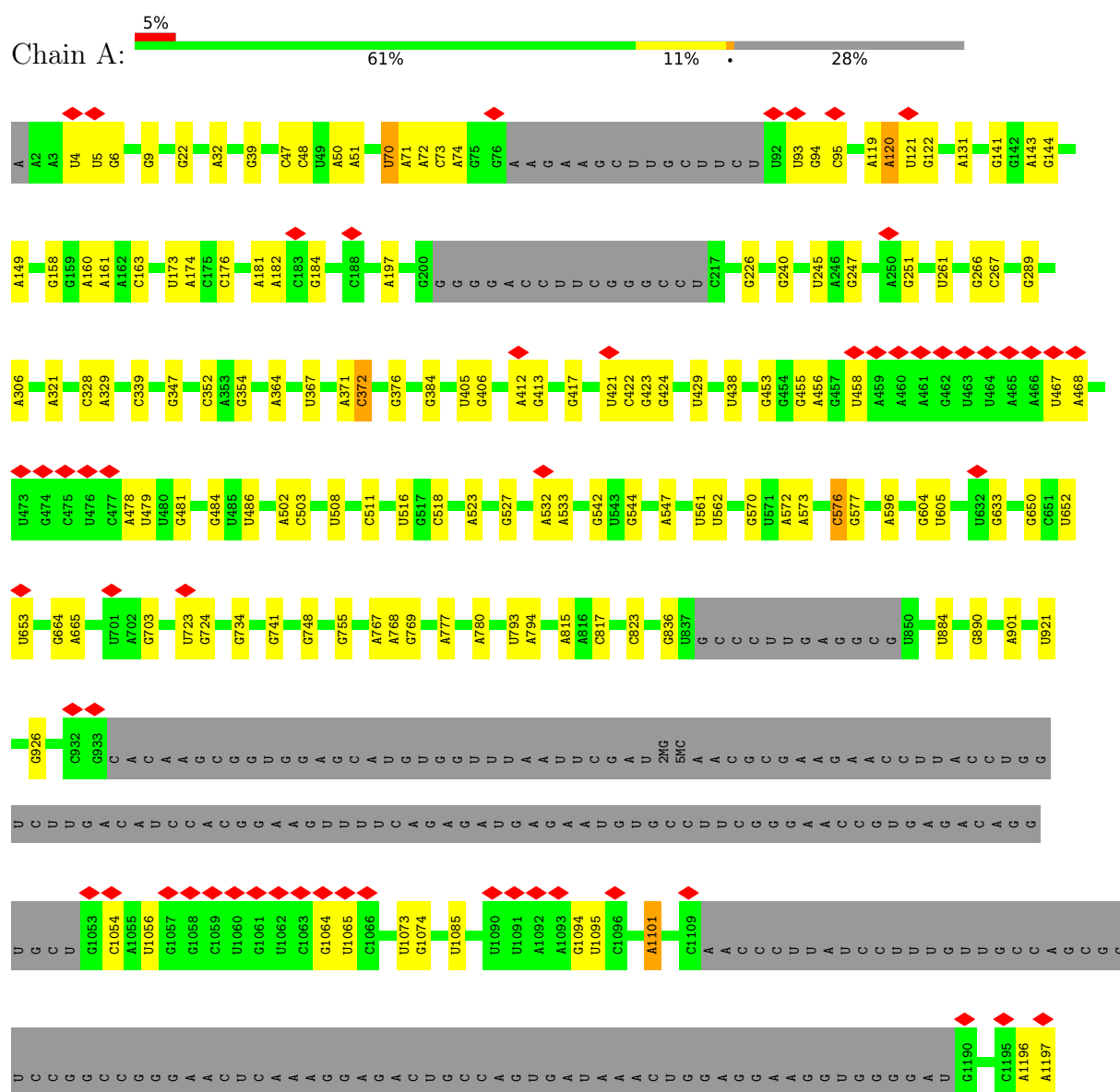
Continued from previous page...

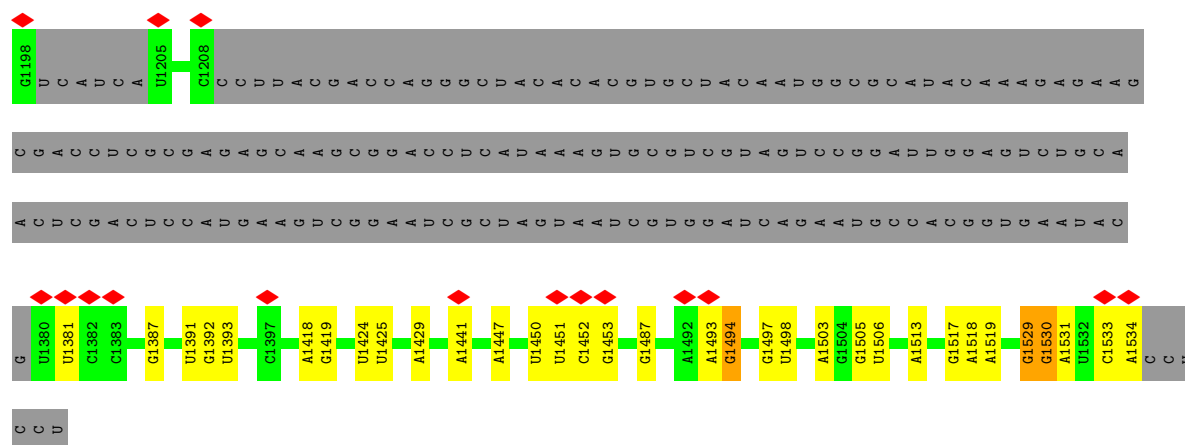
Mol	Chain	Residues	Atoms		AltConf
21	K	9	Total 9	O 9	0
21	L	15	Total 15	O 15	0
21	O	16	Total 16	O 16	0
21	P	17	Total 17	O 17	0
21	Q	11	Total 11	O 11	0
21	R	6	Total 6	O 6	0
21	T	24	Total 24	O 24	0
21	U	5	Total 5	O 5	0

3 Residue-property plots

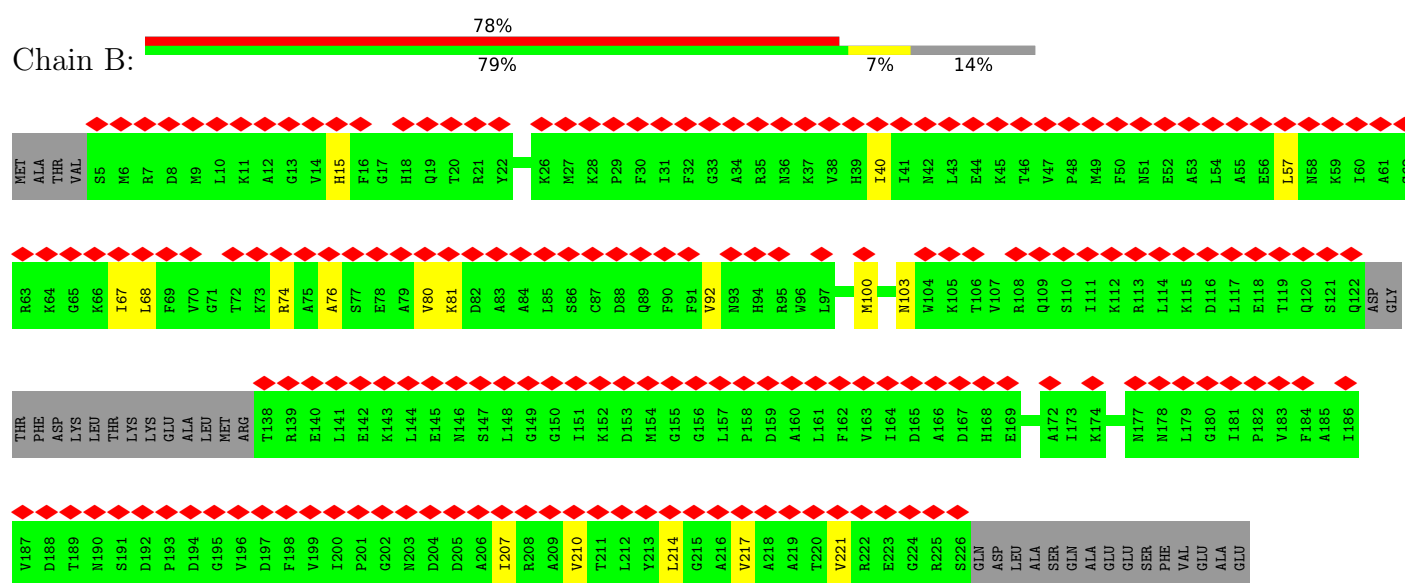
These plots are drawn for all protein, RNA, DNA and oligosaccharide chains in the entry. The first graphic for a chain summarises the proportions of the various outlier classes displayed in the second graphic. The second graphic shows the sequence view annotated by issues in geometry and atom inclusion in map density. Residues are color-coded according to the number of geometric quality criteria for which they contain at least one outlier: green = 0, yellow = 1, orange = 2 and red = 3 or more. A red diamond above a residue indicates a poor fit to the EM map for this residue (all-atom inclusion < 40%). Stretches of 2 or more consecutive residues without any outlier are shown as a green connector. Residues present in the sample, but not in the model, are shown in grey.

• Molecule 1: 16S rRNA

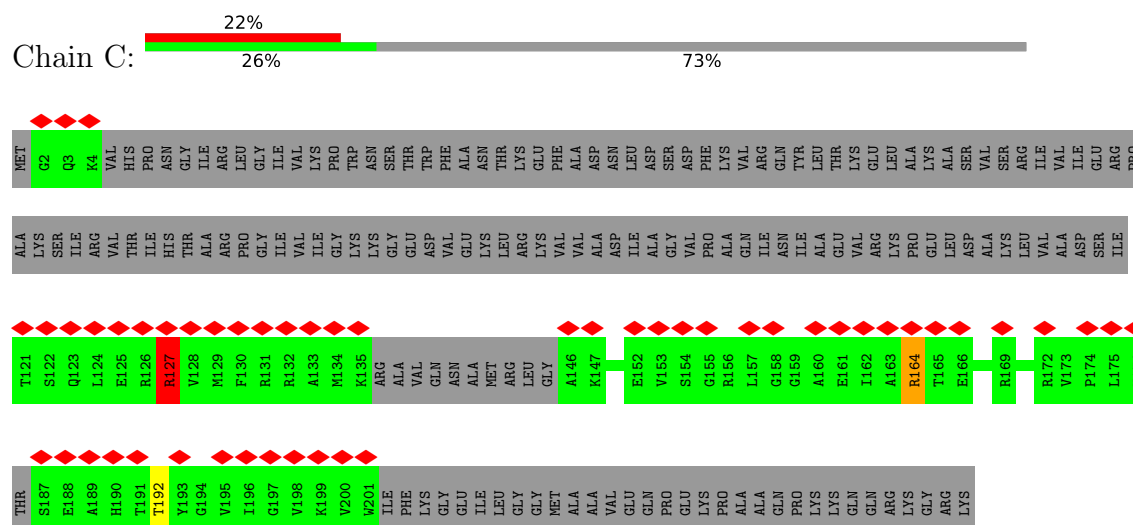




• Molecule 2: 30S ribosomal protein S2



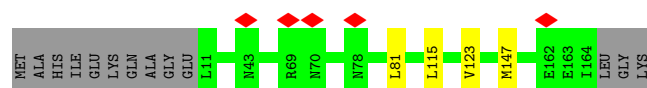
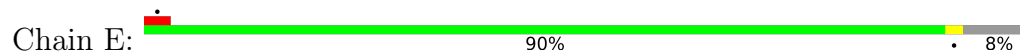
• Molecule 3: Small ribosomal subunit protein uS3



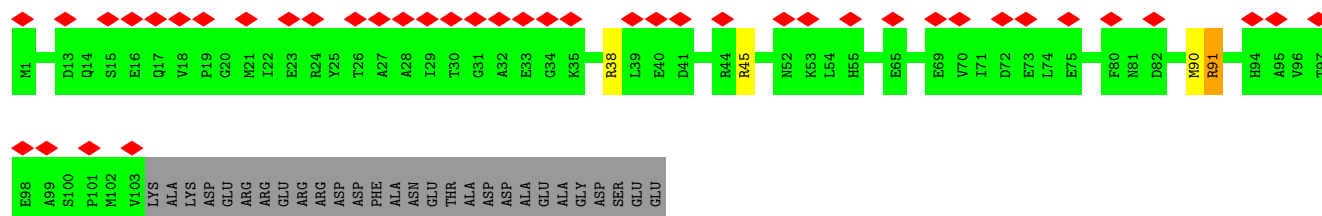
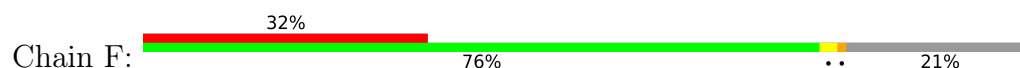
• Molecule 4: Small ribosomal subunit protein uS4



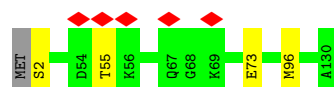
- Molecule 5: Small ribosomal subunit protein uS5



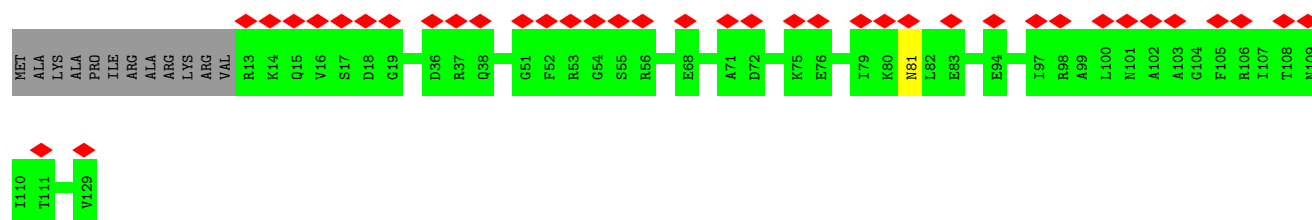
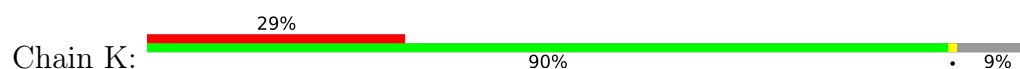
- Molecule 6: Small ribosomal subunit protein bS6, non-modified isoform



- Molecule 7: Small ribosomal subunit protein uS8

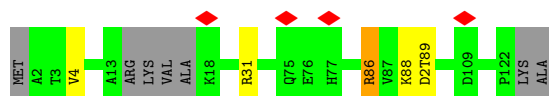


- Molecule 8: Small ribosomal subunit protein uS11



- Molecule 9: Small ribosomal subunit protein uS12

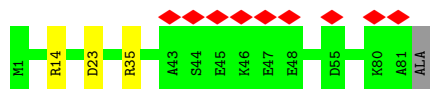




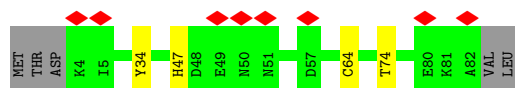
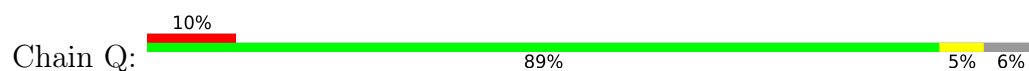
- Molecule 10: Small ribosomal subunit protein uS15



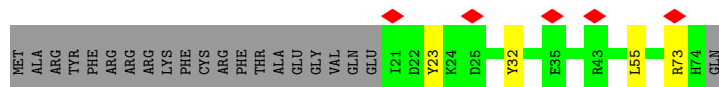
- Molecule 11: 30S ribosomal protein S16



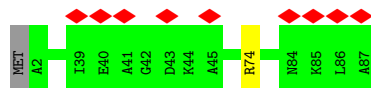
- Molecule 12: Small ribosomal subunit protein uS17



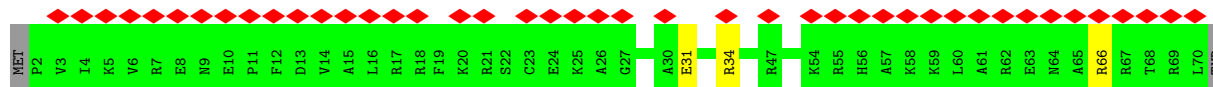
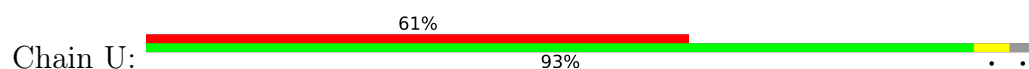
- Molecule 13: Small ribosomal subunit protein bS18



- Molecule 14: 30S ribosomal protein S20



- Molecule 15: Small ribosomal subunit protein bS21



4 Experimental information

Property	Value	Source
EM reconstruction method	SINGLE PARTICLE	Depositor
Imposed symmetry	POINT, Not provided	
Number of particles used	514855	Depositor
Resolution determination method	FSC 0.143 CUT-OFF	Depositor
CTF correction method	PHASE FLIPPING AND AMPLITUDE CORRECTION	Depositor
Microscope	FEI TITAN KRIOS	Depositor
Voltage (kV)	300	Depositor
Electron dose ($e^-/\text{\AA}^2$)	44	Depositor
Minimum defocus (nm)	400	Depositor
Maximum defocus (nm)	1600	Depositor
Magnification	Not provided	
Image detector	GATAN K2 SUMMIT (4k x 4k)	Depositor
Maximum map value	0.269	Depositor
Minimum map value	-0.090	Depositor
Average map value	0.000	Depositor
Map value standard deviation	0.003	Depositor
Recommended contour level	0.03	Depositor
Map size (Å)	390.144, 390.144, 390.144	wwPDB
Map dimensions	512, 512, 512	wwPDB
Map angles (°)	90.0, 90.0, 90.0	wwPDB
Pixel spacing (Å)	0.762, 0.762, 0.762	Depositor

5 Model quality [i](#)

5.1 Standard geometry [i](#)

Bond lengths and bond angles in the following residue types are not validated in this section: 5I0, 4OC, MA6, 5MC, PSU, G7M, 2MG, UR3, IAS, SCM, K, D2T, MG, HY0

The Z score for a bond length (or angle) is the number of standard deviations the observed value is removed from the expected value. A bond length (or angle) with $|Z| > 5$ is considered an outlier worth inspection. RMSZ is the root-mean-square of all Z scores of the bond lengths (or angles).

Mol	Chain	Bond lengths		Bond angles	
		RMSZ	# $ Z > 5$	RMSZ	# $ Z > 5$
1	A	0.52	1/26575 (0.0%)	0.94	28/41442 (0.1%)
2	B	0.54	0/1645	1.06	0/2217
3	C	0.52	0/517	0.88	0/686
4	D	0.50	0/1665	1.04	0/2227
5	E	0.53	0/1148	0.99	0/1545
6	F	0.52	0/858	0.97	0/1160
7	H	0.51	0/989	0.93	0/1326
8	K	0.56	0/884	0.97	0/1191
9	L	0.50	0/912	0.87	0/1223
10	O	0.48	0/722	1.07	0/964
11	P	0.49	0/653	0.96	1/877 (0.1%)
12	Q	0.49	0/650	0.88	0/871
13	R	0.51	0/453	1.02	0/609
14	T	0.50	0/676	1.08	0/895
15	U	0.50	0/584	1.10	0/774
All	All	0.52	1/38931 (0.0%)	0.96	29/58007 (0.0%)

Chiral center outliers are detected by calculating the chiral volume of a chiral center and verifying if the center is modelled as a planar moiety or with the opposite hand. A planarity outlier is detected by checking planarity of atoms in a peptide group, atoms in a mainchain group or atoms of a sidechain that are expected to be planar.

Mol	Chain	#Chirality outliers	#Planarity outliers
2	B	0	1
3	C	0	2
4	D	0	3
6	F	0	3
9	L	0	2
10	O	0	1
11	P	0	2
14	T	0	1

Continued on next page...

Continued from previous page...

Mol	Chain	#Chirality outliers	#Planarity outliers
15	U	0	2
All	All	0	17

All (1) bond length outliers are listed below:

Mol	Chain	Res	Type	Atoms	Z	Observed(Å)	Ideal(Å)
1	A	1498	UR3	O3'-P	5.03	1.61	1.56

All (29) bond angle outliers are listed below:

Mol	Chain	Res	Type	Atoms	Z	Observed(°)	Ideal(°)
1	A	780	A	O3'-P-O5'	-8.00	92.00	104.00
1	A	836	G	O3'-P-O5'	-7.45	92.82	104.00
1	A	561	U	O3'-P-O5'	-7.09	93.36	104.00
1	A	921	U	O3'-P-O5'	-7.08	93.37	104.00
1	A	176	C	O3'-P-O5'	-6.86	93.72	104.00
1	A	544	G	O3'-P-O5'	-6.85	93.73	104.00
1	A	455	G	O3'-P-O5'	-6.78	93.82	104.00
1	A	456	A	O3'-P-O5'	-6.68	93.97	104.00
1	A	143	A	O3'-P-O5'	-6.36	94.46	104.00
1	A	1529	G	O3'-P-O5'	-6.35	94.47	104.00
1	A	1450	U	O3'-P-O5'	-6.08	94.88	104.00
1	A	120	A	O3'-P-O5'	-6.00	95.01	104.00
1	A	901	A	O3'-P-O5'	-5.80	95.30	104.00
1	A	173	U	O3'-P-O5'	-5.66	95.51	104.00
1	A	438	U	O3'-P-O5'	-5.64	95.54	104.00
1	A	576	C	O3'-P-O5'	-5.55	95.67	104.00
1	A	158	G	O3'-P-O5'	-5.51	95.74	104.00
1	A	141	G	O3'-P-O5'	-5.46	95.80	104.00
1	A	652	U	O3'-P-O5'	-5.41	95.88	104.00
1	A	120	A	C4'-C3'-O3'	5.32	117.38	109.40
1	A	523	A	O3'-P-O5'	-5.31	96.04	104.00
1	A	70	U	C2'-C3'-O3'	5.26	117.39	109.50
1	A	329	A	O3'-P-O5'	-5.25	96.13	104.00
11	P	23	ASP	CA-CB-CG	5.24	117.84	112.60
1	A	1393	U	O3'-P-O5'	-5.21	96.19	104.00
1	A	508	U	O3'-P-O5'	-5.15	96.28	104.00
1	A	261	U	O3'-P-O5'	-5.05	96.43	104.00
1	A	570	G	C4'-C3'-O3'	-5.04	105.45	113.00
1	A	364	A	O3'-P-O5'	-5.00	96.49	104.00

There are no chirality outliers.

All (17) planarity outliers are listed below:

Mol	Chain	Res	Type	Group
2	B	74	ARG	Sidechain
3	C	127	ARG	Sidechain
3	C	164	ARG	Sidechain
4	D	184	ARG	Sidechain
4	D	188	ARG	Sidechain
4	D	44	ARG	Sidechain
6	F	38	ARG	Sidechain
6	F	45	ARG	Sidechain
6	F	91	ARG	Sidechain
9	L	31	ARG	Sidechain
9	L	86	ARG	Sidechain
10	O	17	ARG	Sidechain
11	P	14	ARG	Sidechain
11	P	35	ARG	Sidechain
14	T	74	ARG	Sidechain
15	U	34	ARG	Sidechain
15	U	66	ARG	Sidechain

5.2 Too-close contacts ⓘ

In the following table, the Non-H and H(model) columns list the number of non-hydrogen atoms and hydrogen atoms in the chain respectively. The H(added) column lists the number of hydrogen atoms added and optimized by MolProbity. The Clashes column lists the number of clashes within the asymmetric unit, whereas Symm-Clashes lists symmetry-related clashes.

Mol	Chain	Non-H	H(model)	H(added)	Clashes	Symm-Clashes
1	A	23941	0	12054	18	0
2	B	1616	0	1634	9	0
3	C	511	0	524	1	0
4	D	1643	0	1706	4	0
5	E	1135	0	1179	2	0
6	F	839	0	833	2	0
7	H	979	0	1031	1	0
8	K	877	0	884	0	0
9	L	910	0	958	1	0
10	O	714	0	734	1	0
11	P	643	0	661	0	0
12	Q	641	0	682	3	0
13	R	446	0	472	2	0
14	T	670	0	719	0	0
15	U	577	0	620	0	0

Continued on next page...

Continued from previous page...

Mol	Chain	Non-H	H(model)	H(added)	Clashes	Symm-Clashes
16	A	27	0	0	0	0
16	D	1	0	0	0	0
16	F	1	0	0	0	0
17	A	108	0	106	1	0
18	A	41	0	0	0	0
19	A	23	0	24	1	0
20	A	55	0	0	0	0
21	A	1270	0	0	0	0
21	B	1	0	0	0	0
21	C	2	0	0	0	0
21	D	6	0	0	0	0
21	E	9	0	0	0	0
21	F	1	0	0	0	0
21	H	24	0	0	0	0
21	K	9	0	0	0	0
21	L	15	0	0	0	0
21	O	16	0	0	0	0
21	P	17	0	0	0	0
21	Q	11	0	0	0	0
21	R	6	0	0	0	0
21	T	24	0	0	0	0
21	U	5	0	0	0	0
All	All	37814	0	24821	38	0

The all-atom clashscore is defined as the number of clashes found per 1000 atoms (including hydrogen atoms). The all-atom clashscore for this structure is 1.

All (38) close contacts within the same asymmetric unit are listed below, sorted by their clash magnitude.

Atom-1	Atom-2	Interatomic distance (Å)	Clash overlap (Å)
3:C:127:ARG:HH22	3:C:192:THR:HG23	1.55	0.70
2:B:214:LEU:HA	2:B:217:VAL:HG22	1.77	0.66
1:A:823:C:HO2'	7:H:2:SER:N	2.01	0.57
2:B:80:VAL:HA	2:B:214:LEU:HD22	1.85	0.56
1:A:664:G:H22	1:A:741:G:H1	1.56	0.53
1:A:769:G:H4'	1:A:1513:A:H4'	1.91	0.53
2:B:68:LEU:HD11	2:B:92:VAL:HG23	1.90	0.52
13:R:32:TYR:HB3	13:R:55:LEU:HD21	1.93	0.51
1:A:1391:U:H2'	1:A:1392:G:C8	2.46	0.51
9:L:4:VAL:HG23	12:Q:34:TYR:HB3	1.93	0.51
1:A:1073:U:O2'	2:B:103:ASN:ND2	2.46	0.48

Continued on next page...

Continued from previous page...

Atom-1	Atom-2	Interatomic distance (Å)	Clash overlap (Å)
4:D:124:MET:HE3	4:D:146:ARG:HG2	1.95	0.48
6:F:91:ARG:HG3	6:F:91:ARG:HH11	1.78	0.48
12:Q:47:HIS:HB3	12:Q:74:THR:HG22	1.96	0.48
6:F:90:MET:HE1	13:R:23:TYR:CZ	2.49	0.47
4:D:107:PHE:HB3	4:D:145:ILE:HD11	1.99	0.45
1:A:502:A:H2'	1:A:503:C:O4'	2.17	0.45
2:B:210:VAL:HG12	2:B:214:LEU:HD23	1.97	0.45
2:B:76:ALA:HB2	2:B:207:ILE:HD13	1.99	0.45
1:A:1387:G:H5''	19:A:1607:SCM:H8M3	1.97	0.45
5:E:115:LEU:HD13	5:E:123:VAL:HG11	1.99	0.44
2:B:92:VAL:HG21	2:B:100:MET:SD	2.57	0.44
1:A:1530:G:H2'	1:A:1531:A:C8	2.54	0.42
5:E:81:LEU:HD22	5:E:147:MET:HE1	2.02	0.42
1:A:371:A:H2'	1:A:372:C:O4'	2.19	0.42
12:Q:64:CYS:SG	12:Q:74:THR:HG23	2.59	0.42
1:A:405:U:O4	4:D:2:ALA:N	2.53	0.42
1:A:542:G:H5'	4:D:39:GLY:HA3	2.02	0.42
1:A:1424:U:H2'	1:A:1425:U:O4'	2.20	0.41
1:A:149:A:C2	1:A:174:A:C2	3.08	0.41
2:B:15:HIS:HB2	2:B:40:ILE:HG23	2.02	0.41
1:A:767:A:H2'	1:A:768:A:O4'	2.20	0.41
1:A:1494:G:OP1	17:A:1603:HY0:N36	2.53	0.40
1:A:160:A:H2'	1:A:161:A:O4'	2.21	0.40
1:A:604:G:H2'	1:A:605:U:O4'	2.21	0.40
1:A:1074:G:O2'	1:A:1101:A:N1	2.52	0.40
10:O:25:THR:HG21	10:O:70:LEU:HB2	2.02	0.40
2:B:67:ILE:HG13	2:B:221:VAL:HG21	2.02	0.40

There are no symmetry-related clashes.

5.3 Torsion angles [i](#)

5.3.1 Protein backbone [i](#)

In the following table, the Percentiles column shows the percent Ramachandran outliers of the chain as a percentile score with respect to all PDB entries followed by that with respect to all EM entries.

The Analysed column shows the number of residues for which the backbone conformation was analysed, and the total number of residues.

Mol	Chain	Analysed	Favoured	Allowed	Outliers	Percentiles	
2	B	203/241 (84%)	190 (94%)	13 (6%)	0	100	100
3	C	56/233 (24%)	55 (98%)	1 (2%)	0	100	100
4	D	203/206 (98%)	199 (98%)	4 (2%)	0	100	100
5	E	152/167 (91%)	147 (97%)	5 (3%)	0	100	100
6	F	101/131 (77%)	96 (95%)	5 (5%)	0	100	100
7	H	127/130 (98%)	121 (95%)	6 (5%)	0	100	100
8	K	113/129 (88%)	106 (94%)	7 (6%)	0	100	100
9	L	112/124 (90%)	110 (98%)	2 (2%)	0	100	100
10	O	86/89 (97%)	84 (98%)	2 (2%)	0	100	100
11	P	79/82 (96%)	75 (95%)	4 (5%)	0	100	100
12	Q	77/84 (92%)	74 (96%)	3 (4%)	0	100	100
13	R	52/75 (69%)	50 (96%)	1 (2%)	1 (2%)	6	2
14	T	84/87 (97%)	83 (99%)	1 (1%)	0	100	100
15	U	67/71 (94%)	65 (97%)	2 (3%)	0	100	100
All	All	1512/1849 (82%)	1455 (96%)	56 (4%)	1 (0%)	49	49

All (1) Ramachandran outliers are listed below:

Mol	Chain	Res	Type
13	R	73	ARG

5.3.2 Protein sidechains ⓘ

In the following table, the Percentiles column shows the percent sidechain outliers of the chain as a percentile score with respect to all PDB entries followed by that with respect to all EM entries.

The Analysed column shows the number of residues for which the sidechain conformation was analysed, and the total number of residues.

Mol	Chain	Analysed	Rotameric	Outliers	Percentiles	
2	B	171/199 (86%)	169 (99%)	2 (1%)	63	70
3	C	51/190 (27%)	49 (96%)	2 (4%)	28	29
4	D	172/173 (99%)	172 (100%)	0	100	100
5	E	117/126 (93%)	117 (100%)	0	100	100
6	F	90/112 (80%)	90 (100%)	0	100	100

Continued on next page...

Continued from previous page...

Mol	Chain	Analysed	Rotameric	Outliers	Percentiles	
7	H	104/105 (99%)	101 (97%)	3 (3%)	37	40
8	K	89/98 (91%)	88 (99%)	1 (1%)	65	73
9	L	98/103 (95%)	96 (98%)	2 (2%)	48	54
10	O	76/77 (99%)	76 (100%)	0	100	100
11	P	65/65 (100%)	65 (100%)	0	100	100
12	Q	73/78 (94%)	73 (100%)	0	100	100
13	R	47/65 (72%)	47 (100%)	0	100	100
14	T	65/66 (98%)	65 (100%)	0	100	100
15	U	59/61 (97%)	58 (98%)	1 (2%)	53	60
All	All	1277/1518 (84%)	1266 (99%)	11 (1%)	68	77

All (11) residues with a non-rotameric sidechain are listed below:

Mol	Chain	Res	Type
2	B	57	LEU
2	B	81	LYS
3	C	127	ARG
3	C	164	ARG
7	H	55	THR
7	H	73	GLU
7	H	96	MET
8	K	81	ASN
9	L	86	ARG
9	L	88	LYS
15	U	31	GLU

Sometimes sidechains can be flipped to improve hydrogen bonding and reduce clashes. All (19) such sidechains are listed below:

Mol	Chain	Res	Type
2	B	58	ASN
2	B	89	GLN
2	B	93	ASN
2	B	103	ASN
2	B	146	ASN
3	C	123	GLN
4	D	40	GLN
4	D	41	HIS
5	E	97	GLN

Continued on next page...

Continued from previous page...

Mol	Chain	Res	Type
6	F	63	ASN
7	H	4	GLN
8	K	118	HIS
9	L	112	GLN
10	O	35	GLN
10	O	40	GLN
11	P	40	ASN
11	P	59	HIS
14	T	3	ASN
14	T	13	GLN

5.3.3 RNA ⓘ

Mol	Chain	Analysed	Backbone Outliers	Pucker Outliers
1	A	1106/1540 (71%)	124 (11%)	12 (1%)

All (124) RNA backbone outliers are listed below:

Mol	Chain	Res	Type
1	A	4	U
1	A	5	U
1	A	6	G
1	A	9	G
1	A	22	G
1	A	32	A
1	A	39	G
1	A	47	C
1	A	48	C
1	A	50	A
1	A	51	A
1	A	71	A
1	A	72	A
1	A	73	C
1	A	74	A
1	A	93	U
1	A	94	G
1	A	95	C
1	A	119	A
1	A	120	A
1	A	121	U
1	A	122	G

Continued on next page...

Continued from previous page...

Mol	Chain	Res	Type
1	A	131	A
1	A	144	G
1	A	163	C
1	A	181	A
1	A	182	A
1	A	184	G
1	A	197	A
1	A	226	G
1	A	240	G
1	A	245	U
1	A	247	G
1	A	251	G
1	A	266	G
1	A	267	C
1	A	289	G
1	A	306	A
1	A	321	A
1	A	328	C
1	A	339	C
1	A	347	G
1	A	352	C
1	A	354	G
1	A	367	U
1	A	372	C
1	A	376	G
1	A	384	G
1	A	406	G
1	A	412	A
1	A	413	G
1	A	417	G
1	A	421	U
1	A	422	C
1	A	423	G
1	A	424	G
1	A	429	U
1	A	453	G
1	A	458	U
1	A	467	U
1	A	468	A
1	A	478	A
1	A	479	U
1	A	481	G

Continued on next page...

Continued from previous page...

Mol	Chain	Res	Type
1	A	484	G
1	A	486	U
1	A	511	C
1	A	518	C
1	A	532	A
1	A	533	A
1	A	547	A
1	A	562	U
1	A	572	A
1	A	573	A
1	A	576	C
1	A	577	G
1	A	596	A
1	A	633	G
1	A	650	G
1	A	653	U
1	A	665	A
1	A	703	G
1	A	723	U
1	A	724	G
1	A	734	G
1	A	748	G
1	A	755	G
1	A	777	A
1	A	793	U
1	A	794	A
1	A	815	A
1	A	817	C
1	A	890	G
1	A	926	G
1	A	1054	C
1	A	1056	U
1	A	1064	G
1	A	1065	U
1	A	1085	U
1	A	1094	G
1	A	1095	U
1	A	1101	A
1	A	1196	A
1	A	1197	A
1	A	1381	U
1	A	1418	A

Continued on next page...

Continued from previous page...

Mol	Chain	Res	Type
1	A	1419	G
1	A	1429	A
1	A	1441	A
1	A	1451	U
1	A	1452	C
1	A	1453	G
1	A	1487	G
1	A	1493	A
1	A	1494	G
1	A	1497	G
1	A	1503	A
1	A	1505	G
1	A	1506	U
1	A	1517	G
1	A	1529	G
1	A	1530	G
1	A	1533	C
1	A	1534	A

All (12) RNA pucker outliers are listed below:

Mol	Chain	Res	Type
1	A	5	U
1	A	70	U
1	A	73	C
1	A	119	A
1	A	120	A
1	A	251	G
1	A	412	A
1	A	532	A
1	A	653	U
1	A	793	U
1	A	884	U
1	A	1447	A

5.4 Non-standard residues in protein, DNA, RNA chains ⓘ

11 non-standard protein/DNA/RNA residues are modelled in this entry.

In the following table, the Counts columns list the number of bonds (or angles) for which Mogul statistics could be retrieved, the number of bonds (or angles) that are observed in the model and the number of bonds (or angles) that are defined in the Chemical Component Dictionary. The

Link column lists molecule types, if any, to which the group is linked. The Z score for a bond length (or angle) is the number of standard deviations the observed value is removed from the expected value. A bond length (or angle) with $|Z| > 2$ is considered an outlier worth inspection. RMSZ is the root-mean-square of all Z scores of the bond lengths (or angles).

Mol	Type	Chain	Res	Link	Bond lengths			Bond angles		
					Counts	RMSZ	# Z > 2	Counts	RMSZ	# Z > 2
1	2MG	A	1516	1	23,26,27	0.41	0	33,38,41	0.65	0
1	2MG	A	1207	1	23,26,27	0.50	0	33,38,41	0.42	0
1	4OC	A	1402	1	20,23,24	0.42	0	25,32,35	0.65	0
8	IAS	K	119	8	6,7,8	0.96	0	3,8,10	0.75	0
1	G7M	A	527	1	23,26,27	0.74	1 (4%)	34,39,42	0.73	0
1	5MC	A	1407	1	19,22,23	0.40	0	26,32,35	0.84	0
1	MA6	A	1519	1	23,26,27	0.28	0	33,38,41	0.93	2 (6%)
1	UR3	A	1498	16,1	19,22,23	0.31	0	26,32,35	0.86	2 (7%)
9	D2T	L	89	9	8,9,10	0.92	0	6,11,13	1.83	3 (50%)
1	MA6	A	1518	1	23,26,27	0.28	0	33,38,41	0.82	1 (3%)
1	PSU	A	516	20,1	18,21,22	1.06	1 (5%)	21,30,33	0.67	0

In the following table, the Chirals column lists the number of chiral outliers, the number of chiral centers analysed, the number of these observed in the model and the number defined in the Chemical Component Dictionary. Similar counts are reported in the Torsion and Rings columns. '-' means no outliers of that kind were identified.

Mol	Type	Chain	Res	Link	Chirals	Torsions	Rings
1	2MG	A	1516	1	-	0/9/27/28	0/3/3/3
1	2MG	A	1207	1	-	0/9/27/28	0/3/3/3
1	4OC	A	1402	1	-	0/9/29/30	0/2/2/2
8	IAS	K	119	8	-	0/7/7/8	-
1	G7M	A	527	1	-	1/7/25/26	0/3/3/3
1	5MC	A	1407	1	-	0/7/25/26	0/2/2/2
1	MA6	A	1519	1	-	2/11/29/30	0/3/3/3
1	UR3	A	1498	16,1	-	0/7/25/26	0/2/2/2
9	D2T	L	89	9	-	4/7/12/14	-
1	MA6	A	1518	1	-	0/11/29/30	0/3/3/3
1	PSU	A	516	20,1	-	0/7/25/26	0/2/2/2

All (2) bond length outliers are listed below:

Mol	Chain	Res	Type	Atoms	Z	Observed(Å)	Ideal(Å)
1	A	516	PSU	C6-C5	4.22	1.40	1.35
1	A	527	G7M	C8-N7	2.70	1.37	1.33

All (8) bond angle outliers are listed below:

Mol	Chain	Res	Type	Atoms	Z	Observed(°)	Ideal(°)
1	A	1519	MA6	C2-N1-C6	3.08	119.34	111.83
1	A	1518	MA6	C2-N1-C6	3.03	119.23	111.83
9	L	89	D2T	O-C-CA	-2.62	118.03	124.77
9	L	89	D2T	OD2-CG-CB	2.44	118.43	113.15
1	A	1498	UR3	C4-N3-C2	-2.40	122.64	124.58
1	A	1498	UR3	C6-N1-C2	-2.40	119.84	121.80
9	L	89	D2T	OD1-CG-CB	-2.36	117.49	122.44
1	A	1519	MA6	C2'-C3'-C4'	-2.19	98.38	102.61

There are no chirality outliers.

All (7) torsion outliers are listed below:

Mol	Chain	Res	Type	Atoms
9	L	89	D2T	CG-CB-SB-CB1
9	L	89	D2T	CA-CB-CG-OD1
9	L	89	D2T	CA-CB-CG-OD2
1	A	1519	MA6	O4'-C4'-C5'-O5'
1	A	1519	MA6	C3'-C4'-C5'-O5'
9	L	89	D2T	SB-CB-CG-OD2
1	A	527	G7M	C4'-C5'-O5'-P

There are no ring outliers.

No monomer is involved in short contacts.

5.5 Carbohydrates [i](#)

There are no oligosaccharides in this entry.

5.6 Ligand geometry [i](#)

Of 89 ligands modelled in this entry, 84 are monoatomic - leaving 5 for Mogul analysis.

In the following table, the Counts columns list the number of bonds (or angles) for which Mogul statistics could be retrieved, the number of bonds (or angles) that are observed in the model and the number of bonds (or angles) that are defined in the Chemical Component Dictionary. The Link column lists molecule types, if any, to which the group is linked. The Z score for a bond length (or angle) is the number of standard deviations the observed value is removed from the expected value. A bond length (or angle) with $|Z| > 2$ is considered an outlier worth inspection. RMSZ is the root-mean-square of all Z scores of the bond lengths (or angles).

Mol	Type	Chain	Res	Link	Bond lengths			Bond angles		
					Counts	RMSZ	# Z > 2	Counts	RMSZ	# Z > 2
19	SCM	A	1607	-	23,25,25	0.32	0	27,39,39	0.95	2 (7%)
17	HY0	A	1603	16	36,39,39	0.58	1 (2%)	44,60,60	0.83	2 (4%)
17	HY0	A	1605	16	36,39,39	0.68	1 (2%)	44,60,60	0.70	0
17	HY0	A	1604	16	36,39,39	0.55	1 (2%)	44,60,60	0.62	0
18	5I0	A	1606	-	42,43,43	0.36	0	54,65,65	0.99	4 (7%)

In the following table, the Chirals column lists the number of chiral outliers, the number of chiral centers analysed, the number of these observed in the model and the number defined in the Chemical Component Dictionary. Similar counts are reported in the Torsion and Rings columns. '-' means no outliers of that kind were identified.

Mol	Type	Chain	Res	Link	Chirals	Torsions	Rings
19	SCM	A	1607	-	-	0/4/57/57	0/3/3/3
17	HY0	A	1603	16	-	0/12/87/87	0/4/4/4
17	HY0	A	1605	16	-	2/12/87/87	0/4/4/4
17	HY0	A	1604	16	-	0/12/87/87	0/4/4/4
18	5I0	A	1606	-	-	1/26/90/90	0/3/3/3

All (3) bond length outliers are listed below:

Mol	Chain	Res	Type	Atoms	Z	Observed(Å)	Ideal(Å)
17	A	1605	HY0	O28-C23	3.22	1.44	1.40
17	A	1604	HY0	O28-C23	2.51	1.43	1.40
17	A	1603	HY0	O28-C23	2.46	1.43	1.40

All (8) bond angle outliers are listed below:

Mol	Chain	Res	Type	Atoms	Z	Observed(°)	Ideal(°)
17	A	1603	HY0	C23-O28-C27	3.12	117.95	112.00
18	A	1606	5I0	O42-C12-C22	-2.91	104.20	107.31
19	A	1607	SCM	O2B-C6-O1	-2.80	105.16	107.40
18	A	1606	5I0	N31-CD1-NF1	2.58	125.00	120.58
18	A	1606	5I0	N11-CA1-NC1	-2.35	116.55	120.58
18	A	1606	5I0	NB1-CA1-N11	2.34	124.73	119.58
17	A	1603	HY0	O28-C27-C26	2.23	111.62	108.50
19	A	1607	SCM	C6-O2B-C12	2.19	115.73	111.01

There are no chirality outliers.

All (3) torsion outliers are listed below:

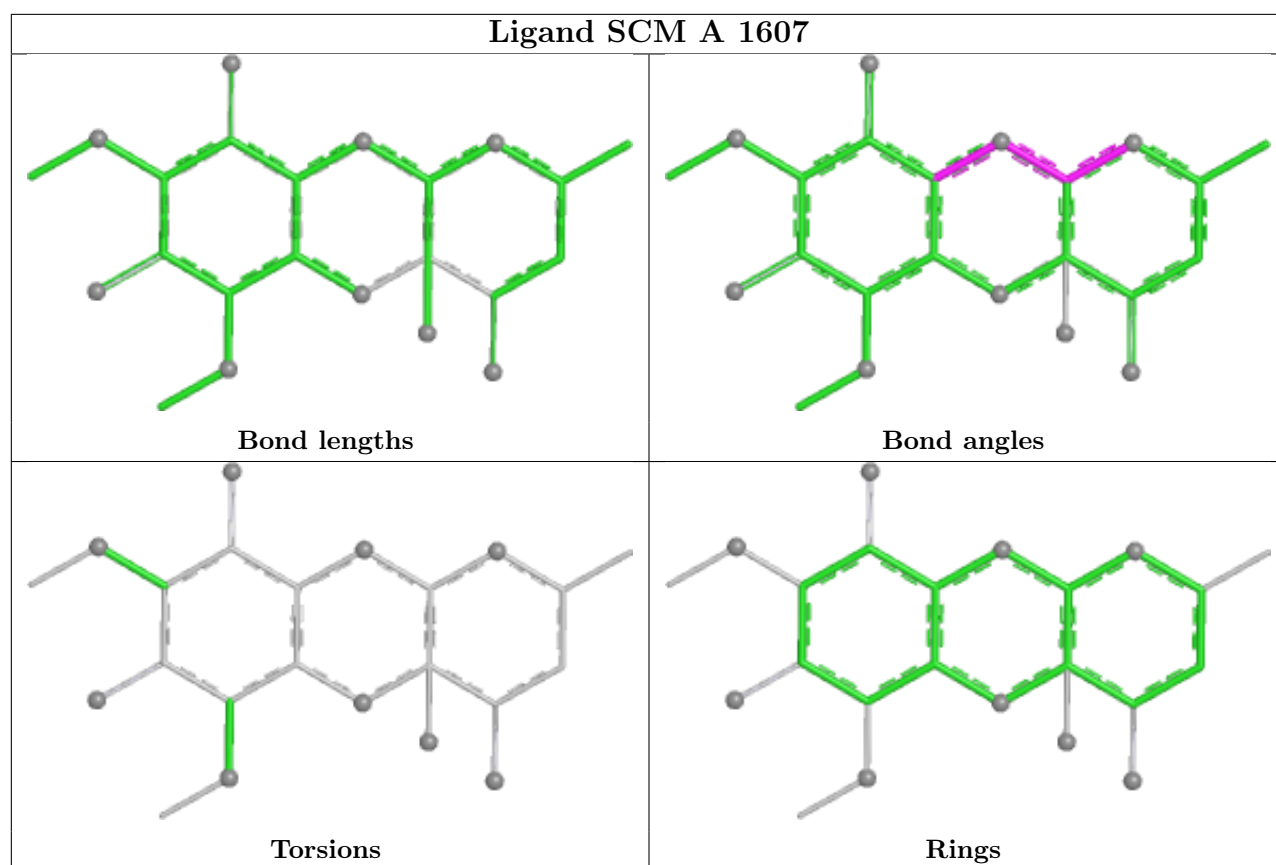
Mol	Chain	Res	Type	Atoms
17	A	1605	HY0	C3-C4-N9-C10
17	A	1605	HY0	C5-C4-N9-C10
18	A	1606	5I0	C13-C23-N23-CI3

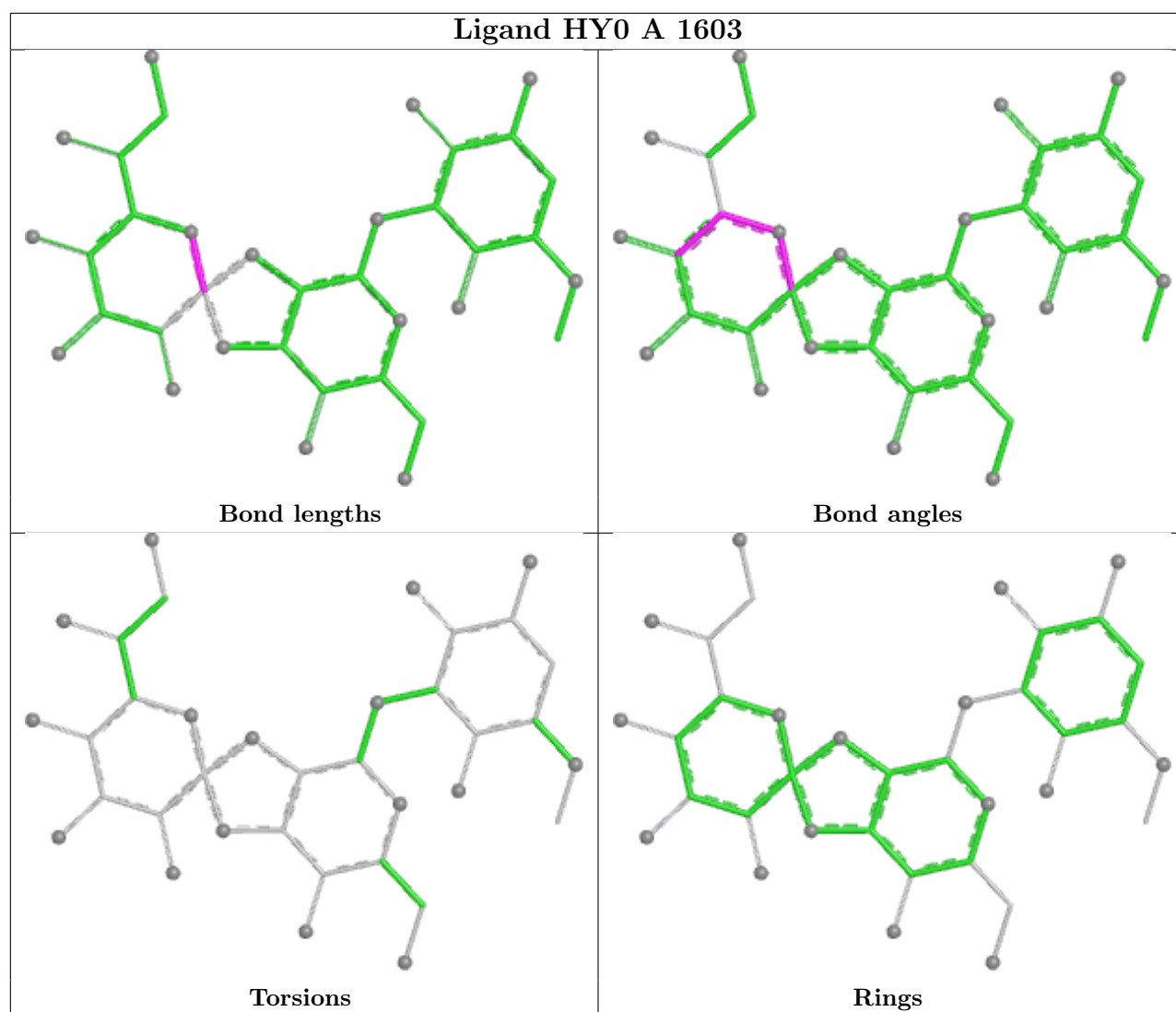
There are no ring outliers.

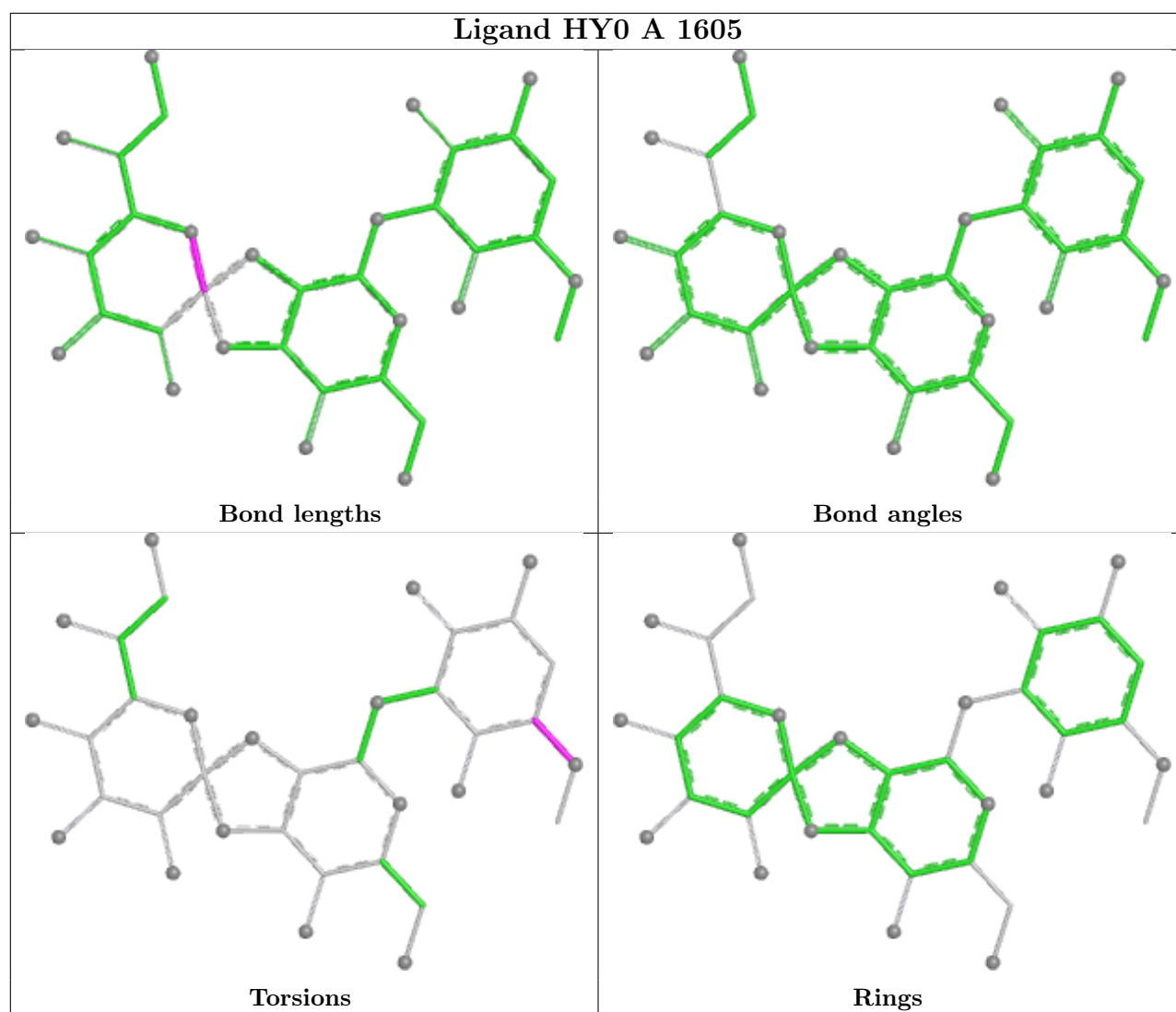
2 monomers are involved in 2 short contacts:

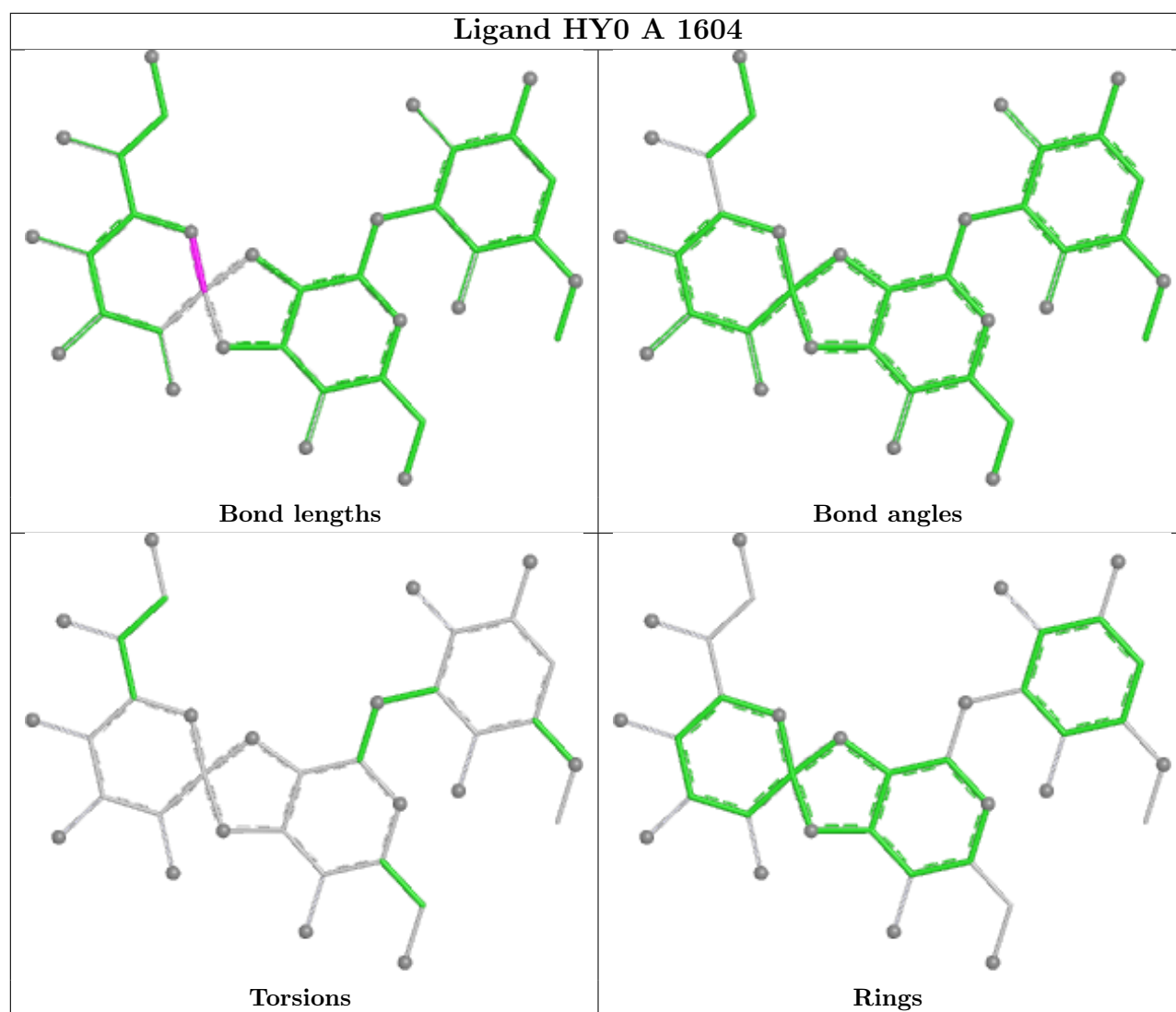
Mol	Chain	Res	Type	Clashes	Symm-Clashes
19	A	1607	SCM	1	0
17	A	1603	HY0	1	0

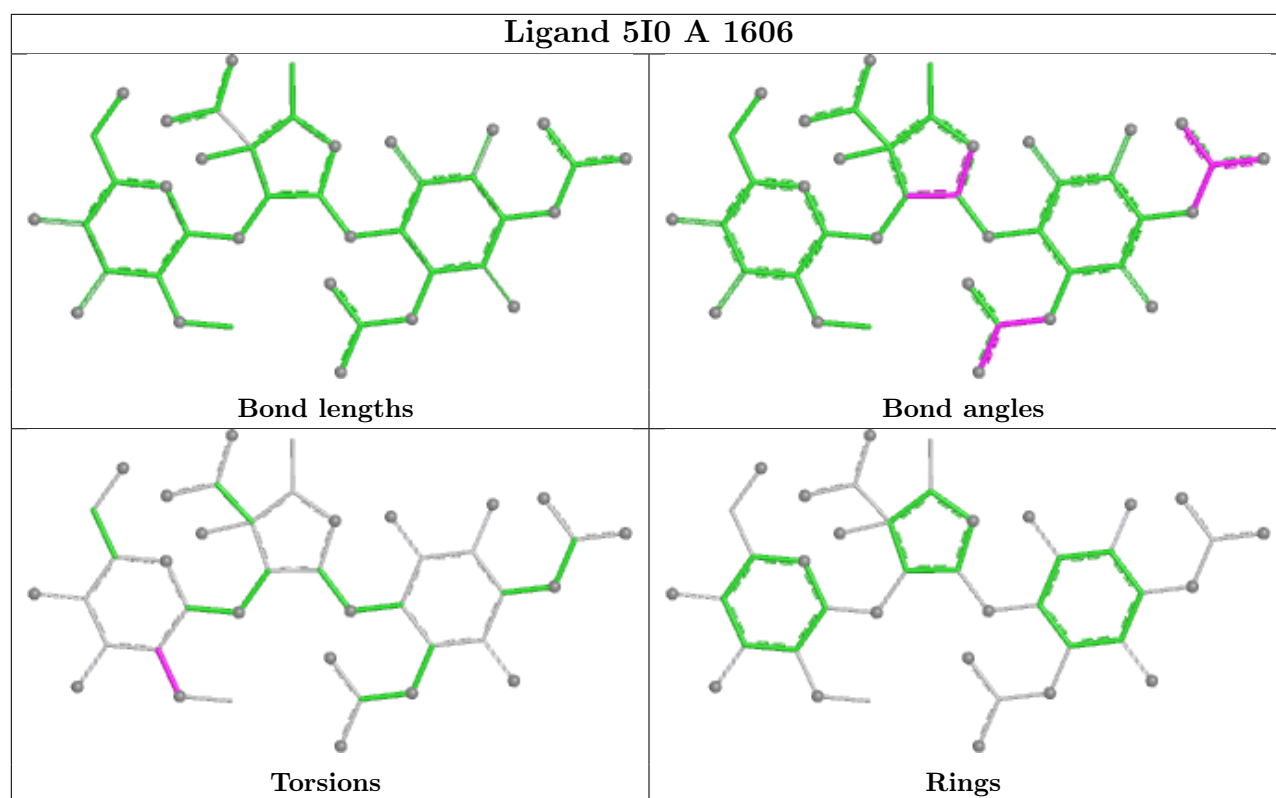
The following is a two-dimensional graphical depiction of Mogul quality analysis of bond lengths, bond angles, torsion angles, and ring geometry for all instances of the Ligand of Interest. In addition, ligands with molecular weight > 250 and outliers as shown on the validation Tables will also be included. For torsion angles, if less than 5% of the Mogul distribution of torsion angles is within 10 degrees of the torsion angle in question, then that torsion angle is considered an outlier. Any bond that is central to one or more torsion angles identified as an outlier by Mogul will be highlighted in the graph. For rings, the root-mean-square deviation (RMSD) between the ring in question and similar rings identified by Mogul is calculated over all ring torsion angles. If the average RMSD is greater than 60 degrees and the minimal RMSD between the ring in question and any Mogul-identified rings is also greater than 60 degrees, then that ring is considered an outlier. The outliers are highlighted in purple. The color gray indicates Mogul did not find sufficient equivalents in the CSD to analyse the geometry.











5.7 Other polymers [i](#)

There are no such residues in this entry.

5.8 Polymer linkage issues [i](#)

There are no chain breaks in this entry.

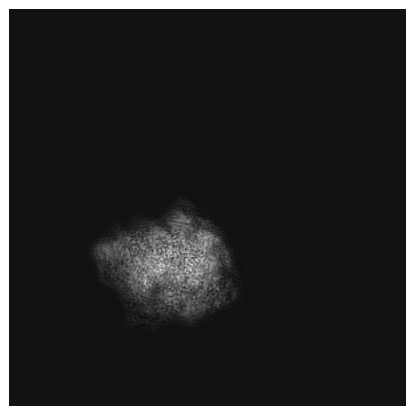
6 Map visualisation [i](#)

This section contains visualisations of the EMDB entry EMD-16526. These allow visual inspection of the internal detail of the map and identification of artifacts.

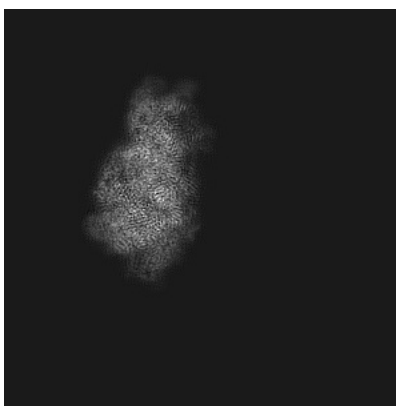
Images derived from a raw map, generated by summing the deposited half-maps, are presented below the corresponding image components of the primary map to allow further visual inspection and comparison with those of the primary map.

6.1 Orthogonal projections [i](#)

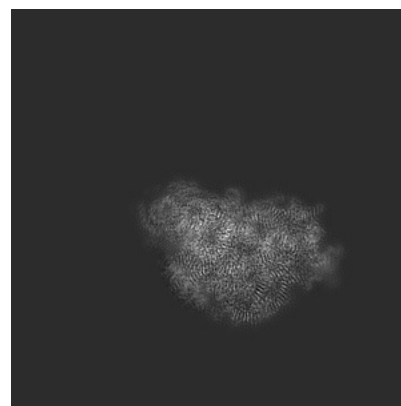
6.1.1 Primary map



X

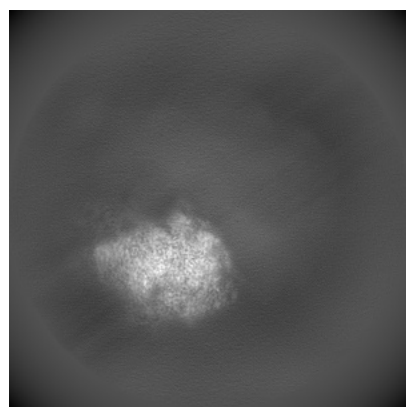


Y

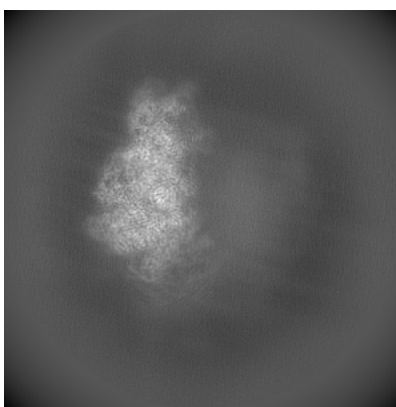


Z

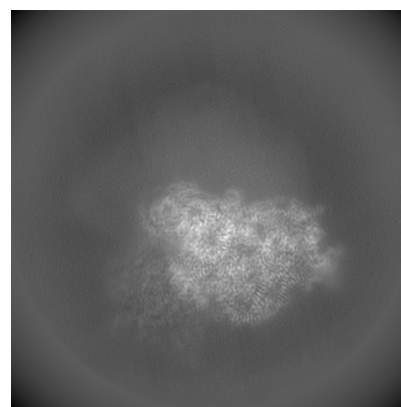
6.1.2 Raw map



X



Y

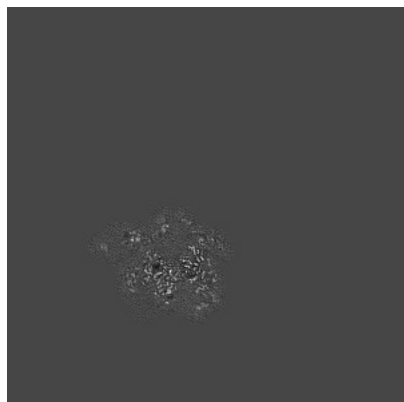


Z

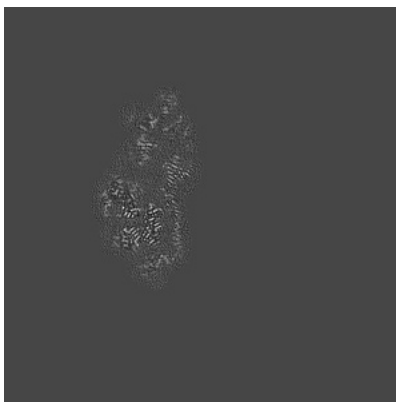
The images above show the map projected in three orthogonal directions.

6.2 Central slices [i](#)

6.2.1 Primary map



X Index: 256

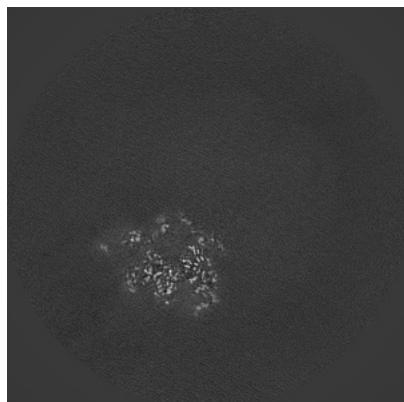


Y Index: 256

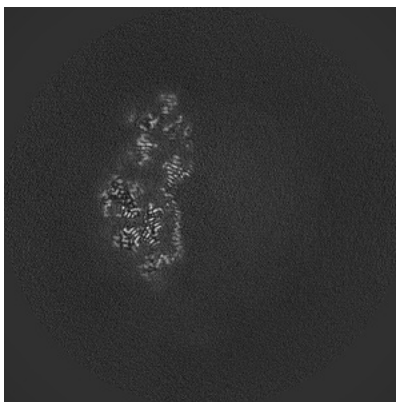


Z Index: 256

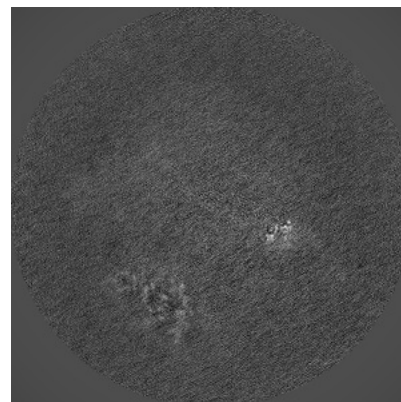
6.2.2 Raw map



X Index: 256



Y Index: 256

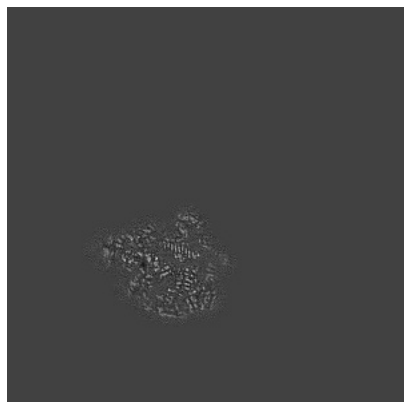


Z Index: 256

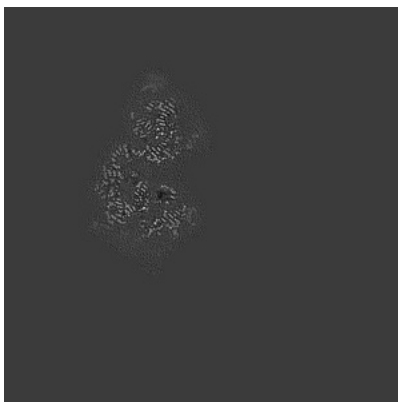
The images above show central slices of the map in three orthogonal directions.

6.3 Largest variance slices [i](#)

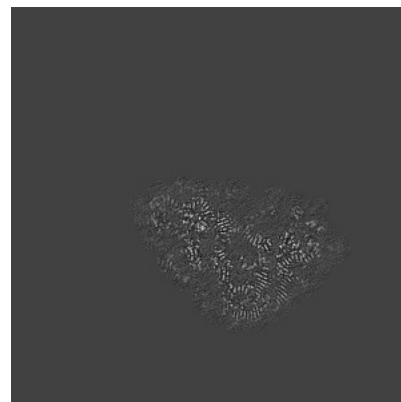
6.3.1 Primary map



X Index: 277

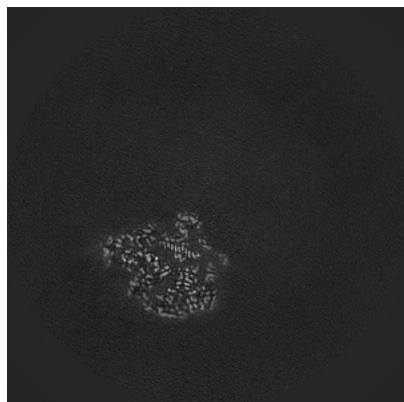


Y Index: 205

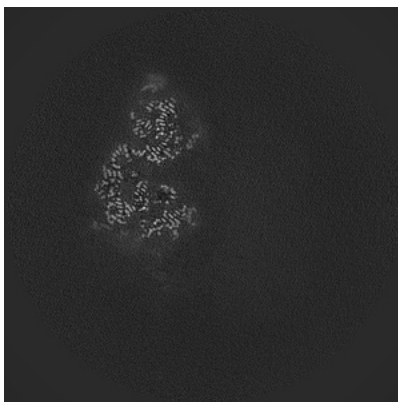


Z Index: 195

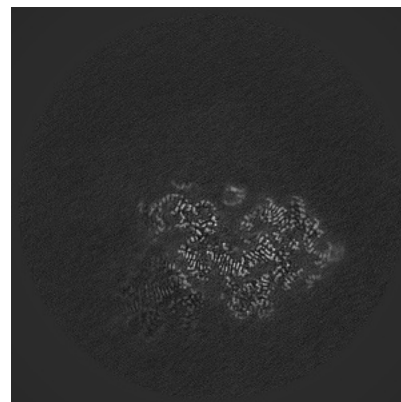
6.3.2 Raw map



X Index: 277



Y Index: 205

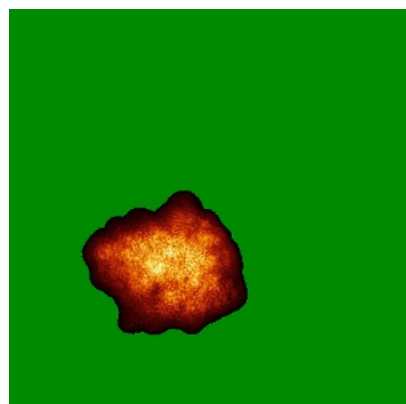


Z Index: 184

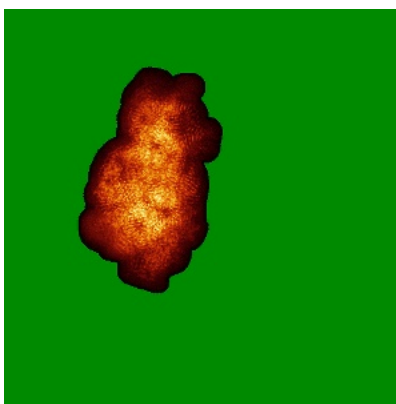
The images above show the largest variance slices of the map in three orthogonal directions.

6.4 Orthogonal standard-deviation projections (False-color) [i](#)

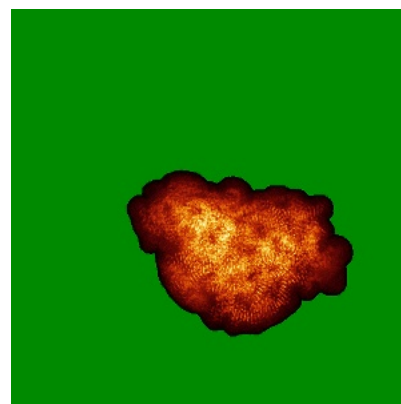
6.4.1 Primary map



X

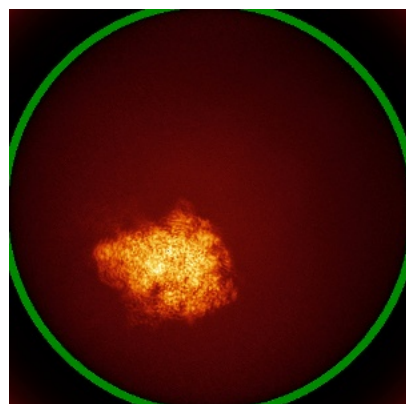


Y

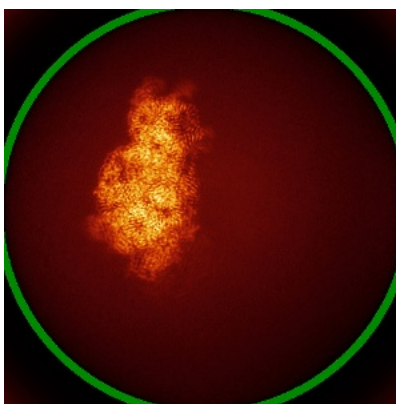


Z

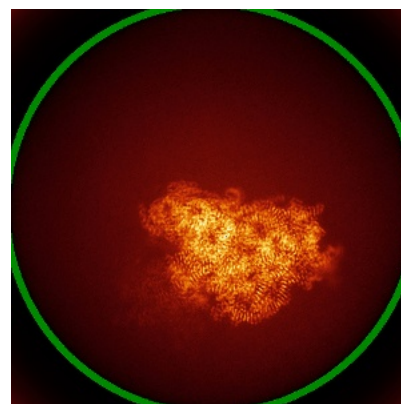
6.4.2 Raw map



X



Y



Z

The images above show the map standard deviation projections with false color in three orthogonal directions. Minimum values are shown in green, max in blue, and dark to light orange shades represent small to large values respectively.

6.5 Orthogonal surface views [i](#)

6.5.1 Primary map



X



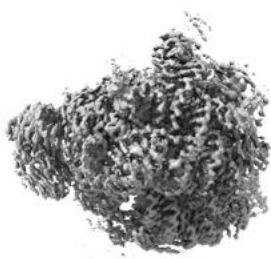
Y



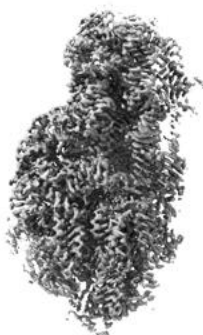
Z

The images above show the 3D surface view of the map at the recommended contour level 0.03. These images, in conjunction with the slice images, may facilitate assessment of whether an appropriate contour level has been provided.

6.5.2 Raw map



X



Y



Z

These images show the 3D surface of the raw map. The raw map's contour level was selected so that its surface encloses the same volume as the primary map does at its recommended contour level.

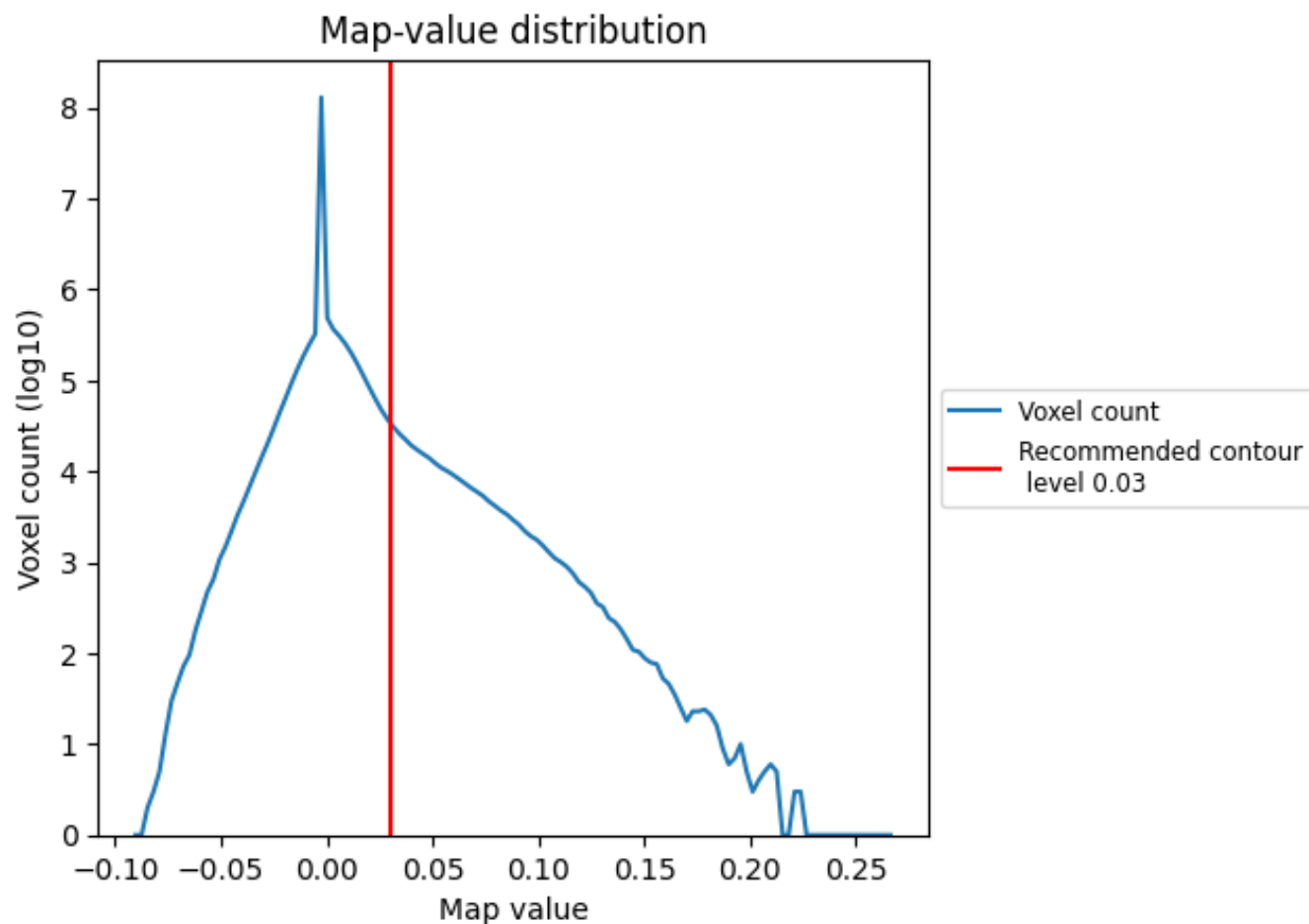
6.6 Mask visualisation [i](#)

This section was not generated. No masks/segmentation were deposited.

7 Map analysis [i](#)

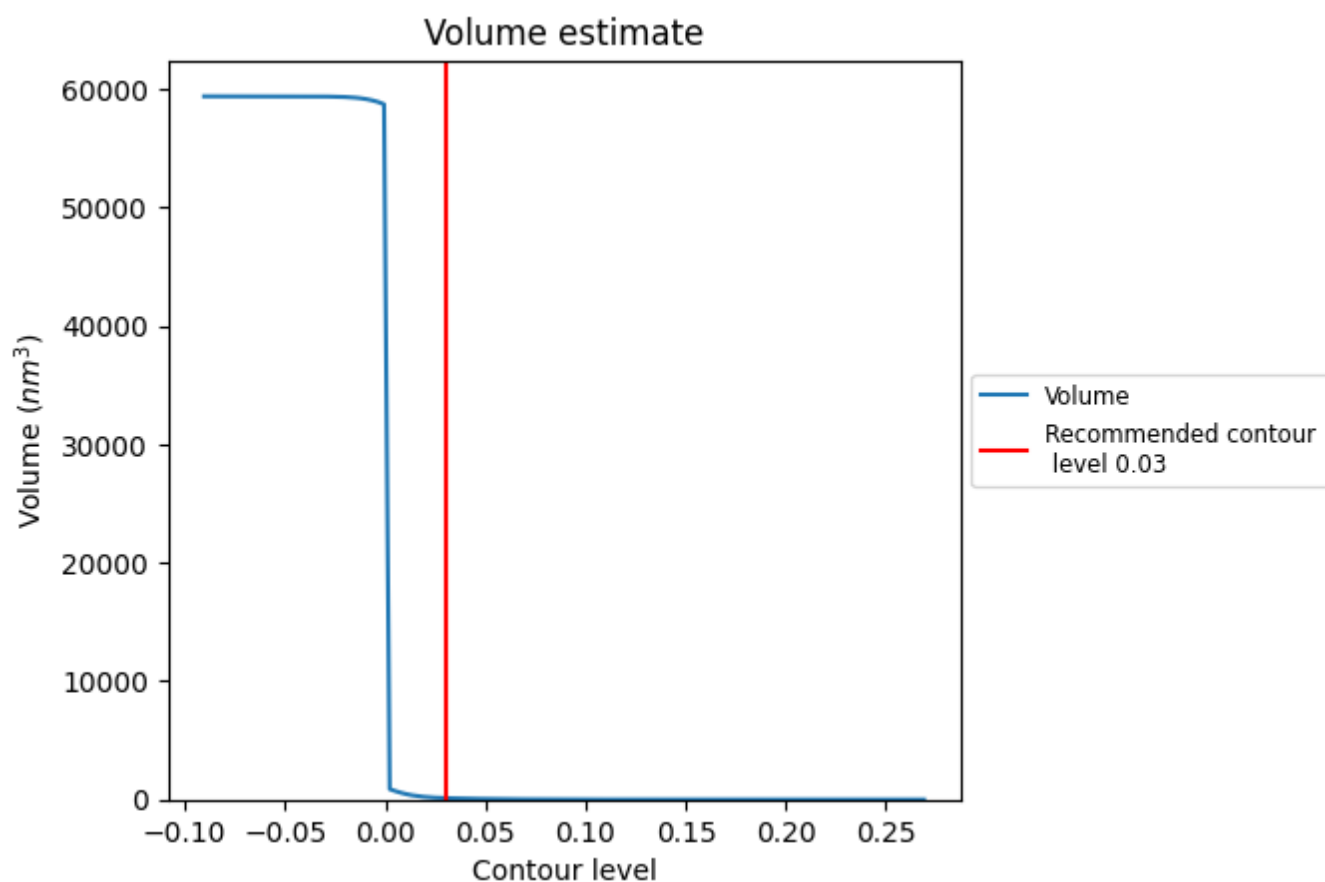
This section contains the results of statistical analysis of the map.

7.1 Map-value distribution [i](#)



The map-value distribution is plotted in 128 intervals along the x-axis. The y-axis is logarithmic. A spike in this graph at zero usually indicates that the volume has been masked.

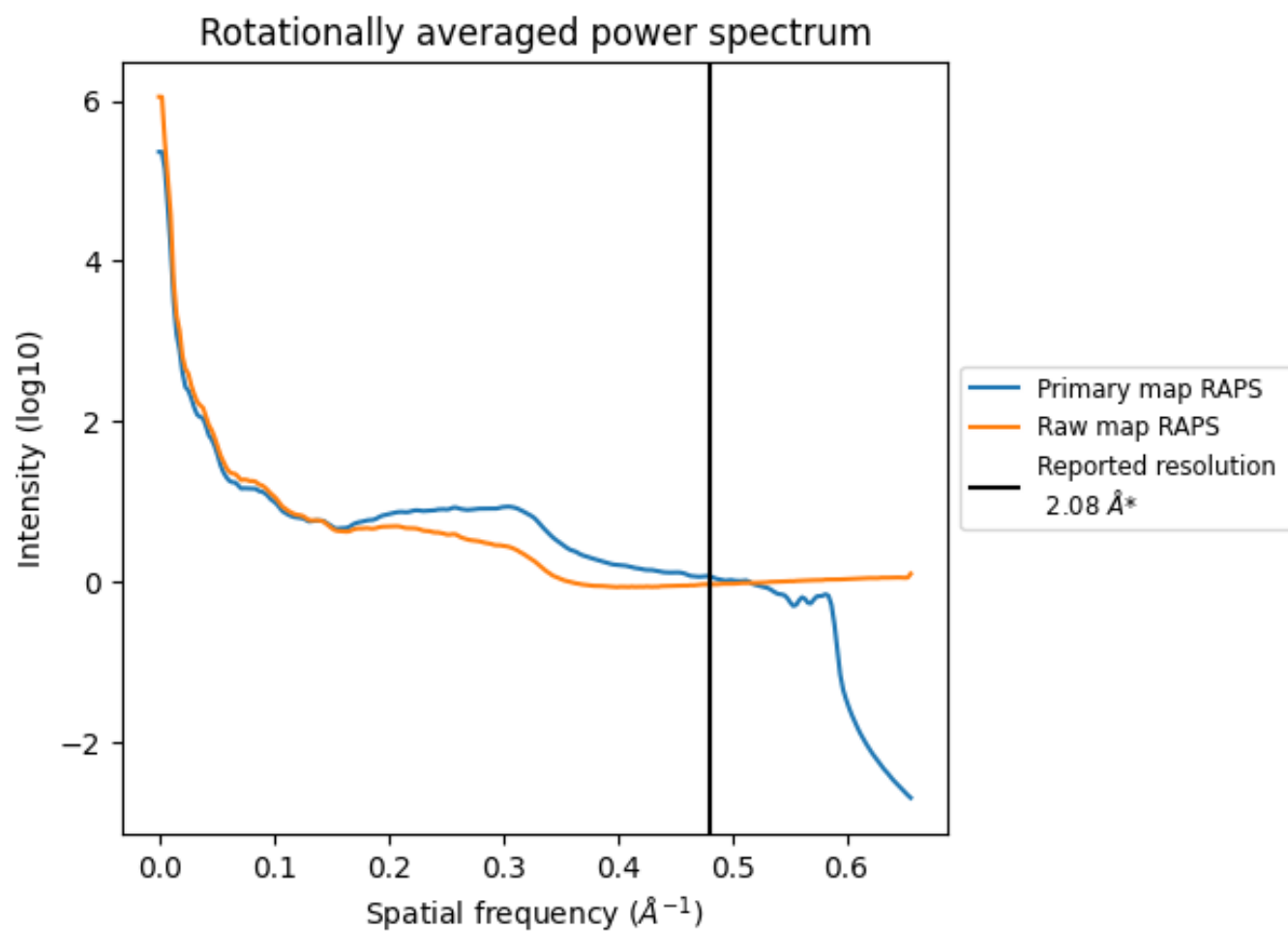
7.2 Volume estimate [i](#)



The volume at the recommended contour level is 123 nm^3 ; this corresponds to an approximate mass of 111 kDa.

The volume estimate graph shows how the enclosed volume varies with the contour level. The recommended contour level is shown as a vertical line and the intersection between the line and the curve gives the volume of the enclosed surface at the given level.

7.3 Rotationally averaged power spectrum ⓘ

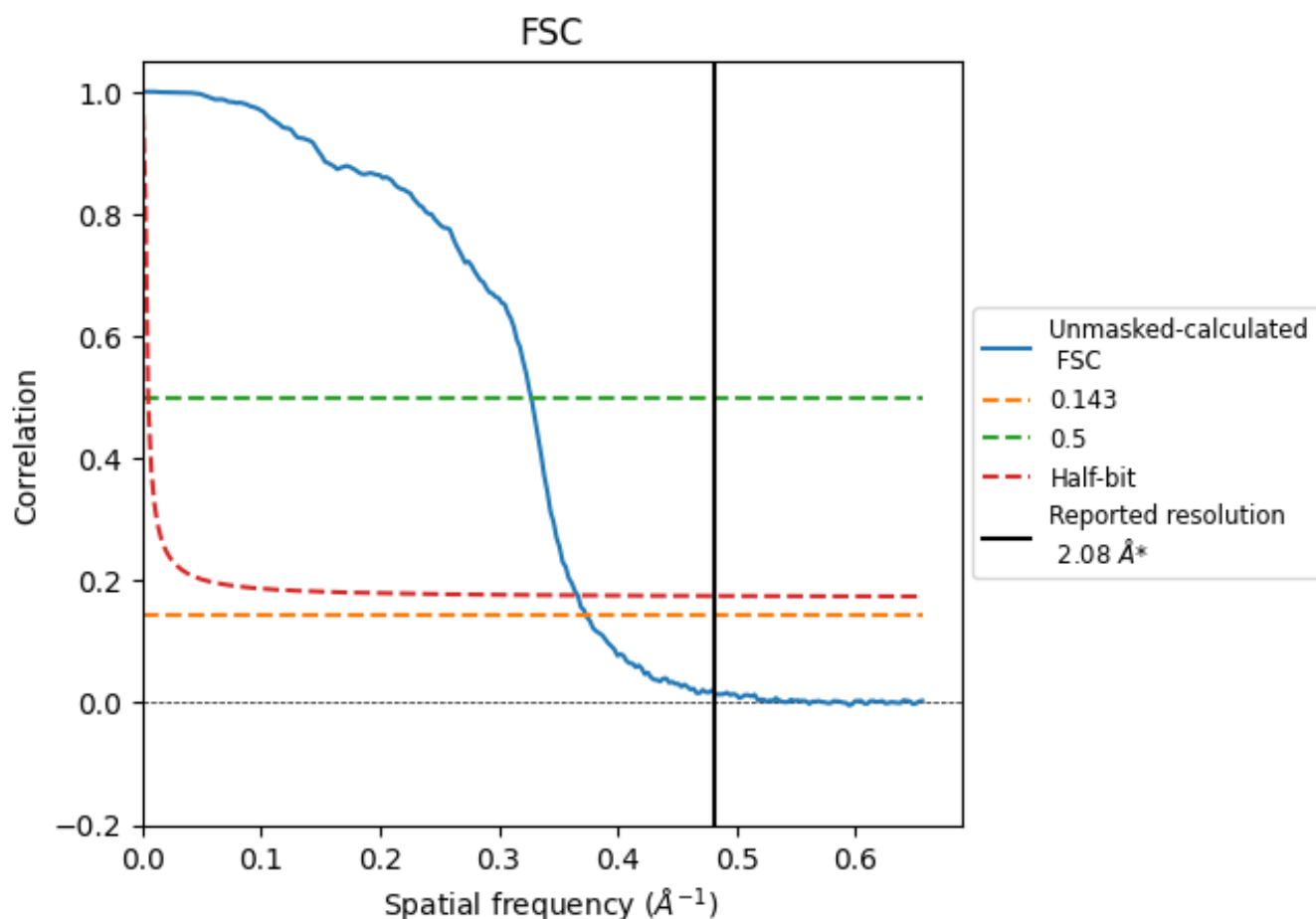


*Reported resolution corresponds to spatial frequency of 0.481 \AA^{-1}

8 Fourier-Shell correlation [i](#)

Fourier-Shell Correlation (FSC) is the most commonly used method to estimate the resolution of single-particle and subtomogram-averaged maps. The shape of the curve depends on the imposed symmetry, mask and whether or not the two 3D reconstructions used were processed from a common reference. The reported resolution is shown as a black line. A curve is displayed for the half-bit criterion in addition to lines showing the 0.143 gold standard cut-off and 0.5 cut-off.

8.1 FSC [i](#)



*Reported resolution corresponds to spatial frequency of 0.481 \AA^{-1}

8.2 Resolution estimates [i](#)

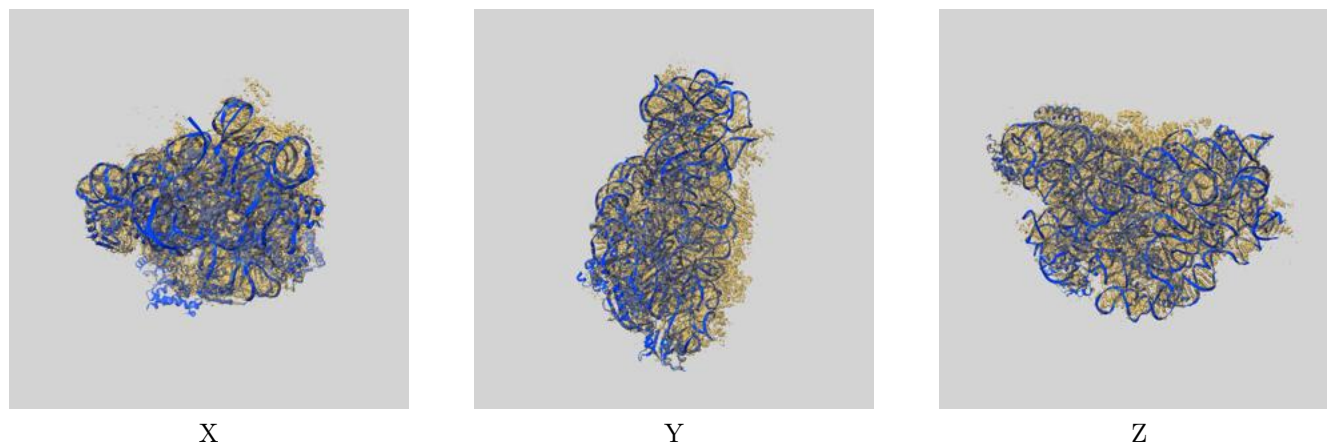
Resolution estimate (Å)	Estimation criterion (FSC cut-off)		
	0.143	0.5	Half-bit
Reported by author	2.08	-	-
Author-provided FSC curve	-	-	-
Unmasked-calculated*	2.68	3.06	2.73

*Resolution estimate based on FSC curve calculated by comparison of deposited half-maps. The value from deposited half-maps intersecting FSC 0.143 CUT-OFF 2.68 differs from the reported value 2.08 by more than 10 %

9 Map-model fit [i](#)

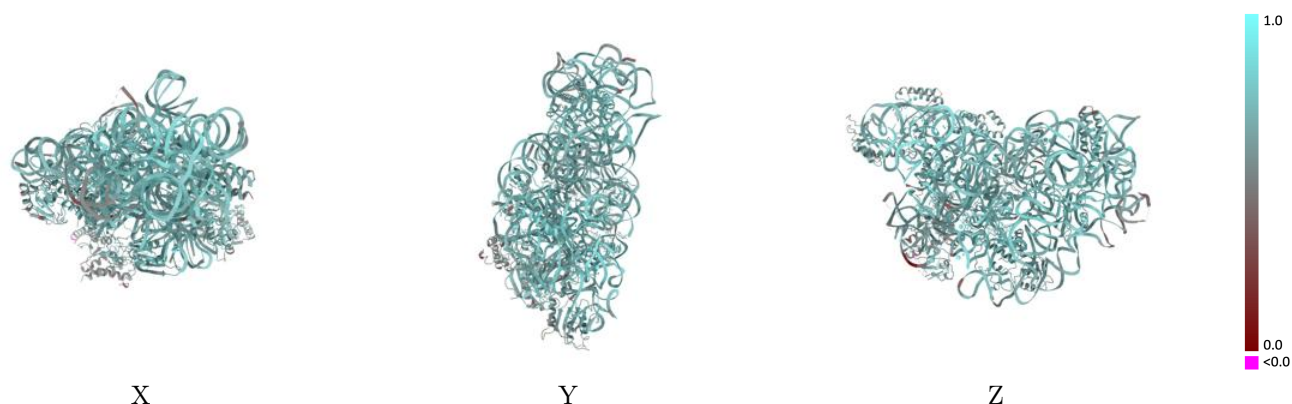
This section contains information regarding the fit between EMDB map EMD-16526 and PDB model 8CAI. Per-residue inclusion information can be found in section [3](#) on page [10](#).

9.1 Map-model overlay [i](#)



The images above show the 3D surface view of the map at the recommended contour level 0.03 at 50% transparency in yellow overlaid with a ribbon representation of the model coloured in blue. These images allow for the visual assessment of the quality of fit between the atomic model and the map.

9.2 Q-score mapped to coordinate model [i](#)



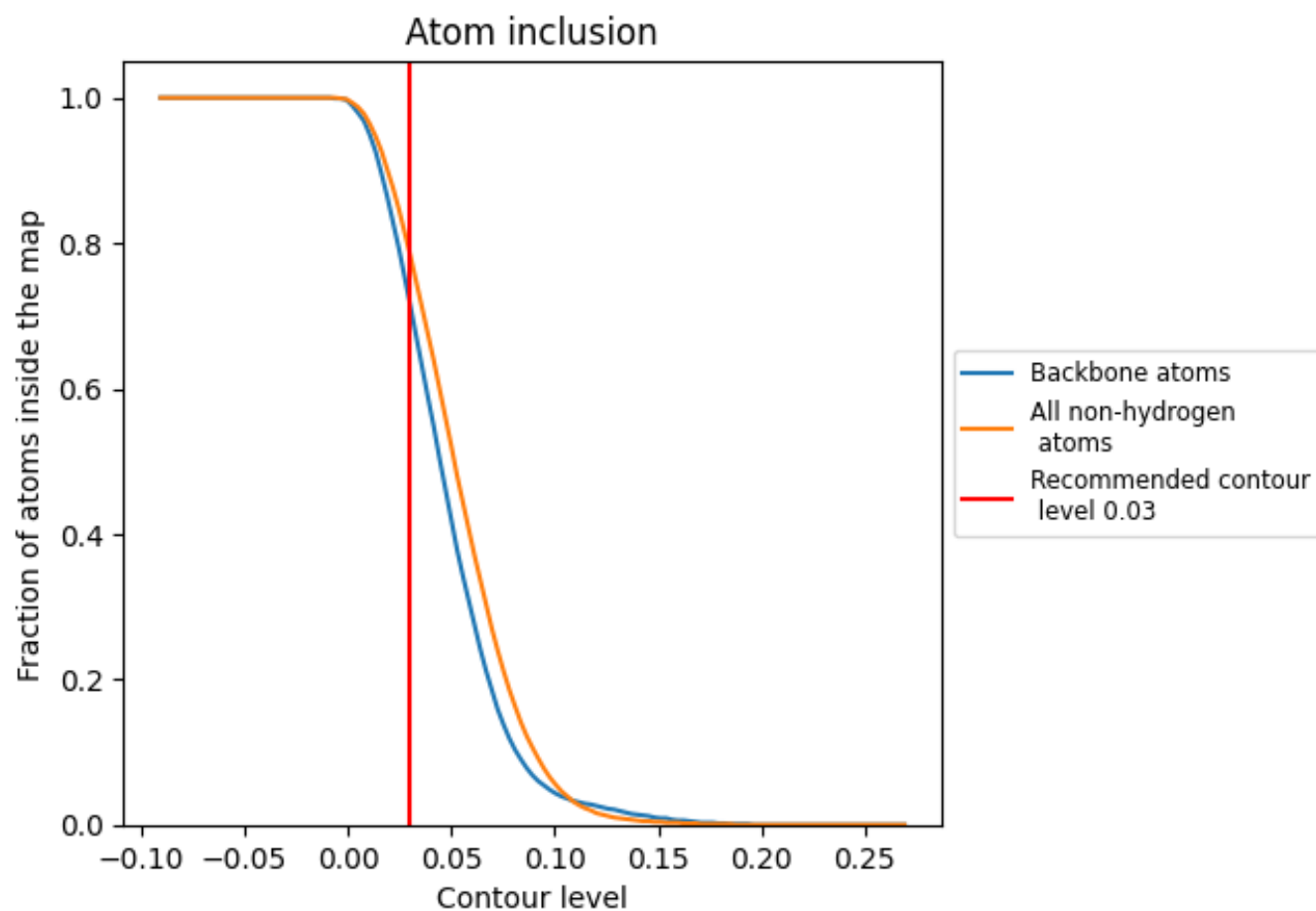
The images above show the model with each residue coloured according to its Q-score. This shows their resolvability in the map with higher Q-score values reflecting better resolvability. Please note: Q-score is calculating the resolvability of atoms, and thus high values are only expected at resolutions at which atoms can be resolved. Low Q-score values may therefore be expected for many entries.

9.3 Atom inclusion mapped to coordinate model [i](#)



The images above show the model with each residue coloured according to its atom inclusion. This shows to what extent they are inside the map at the recommended contour level (0.03).

































9.4 Atom inclusion [i](#)



At the recommended contour level, 72% of all backbone atoms, 79% of all non-hydrogen atoms, are inside the map.

9.5 Map-model fit summary

The table lists the average atom inclusion at the recommended contour level (0.03) and Q-score for the entire model and for each chain.

Chain	Atom inclusion	Q-score
All	 0.7870	 0.6980
A	 0.8720	 0.7160
B	 0.1510	 0.5310
C	 0.2710	 0.6110
D	 0.6870	 0.6800
E	 0.8090	 0.7070
F	 0.5130	 0.6240
H	 0.8250	 0.7250
K	 0.5850	 0.6430
L	 0.8610	 0.7370
O	 0.7710	 0.7090
P	 0.8290	 0.7330
Q	 0.7330	 0.6780
R	 0.7680	 0.6980
T	 0.7850	 0.7130
U	 0.3590	 0.5760

