



# Full wwPDB X-ray Structure Validation Report ⓘ

Mar 12, 2026 – 02:50 AM UTC

PDB ID : 8CFJ / pdb\_00008cfj  
Title : Crystal structure of S-adenosyl-L-homocysteine hydrolase from *P. aeruginosa* in complex with F2X-Entry library fragment D10  
Authors : Malecki, P.H.; Gawel, M.; Stepniewska, M.; Brzezinski, K.  
Deposited on : 2023-02-03  
Resolution : 1.64 Å(reported)

This is a Full wwPDB X-ray Structure Validation Report for a publicly released PDB entry.

We welcome your comments at [validation@mail.wwpdb.org](mailto:validation@mail.wwpdb.org)

A user guide is available at

<https://www.wwpdb.org/validation/2017/XrayValidationReportHelp>

with specific help available everywhere you see the ⓘ symbol.

The types of validation reports are described at

<http://www.wwpdb.org/validation/2017/FAQs#types>.

---

The following versions of software and data (see [references ⓘ](#)) were used in the production of this report:

MolProbity	:	4-5-2 with Phenix2.0
Mogul	:	2022.3.0, CSD as543be (2022)
Xtriage (Phenix)	:	2.0
EDS	:	3.0
Buster-report	:	wwPDB partial adaption of 1.1.7 (2018)
Percentile statistics	:	20250101.v01 (using entries in the PDB archive January 1st 2025)
CCP4	:	9.0.010 (Gargrove)
Density-Fitness	:	1.0.12
Ideal geometry (proteins)	:	Engh & Huber (2001)
Ideal geometry (DNA, RNA)	:	Parkinson et al. (1996)
Validation Pipeline (wwPDB-VP)	:	2.49

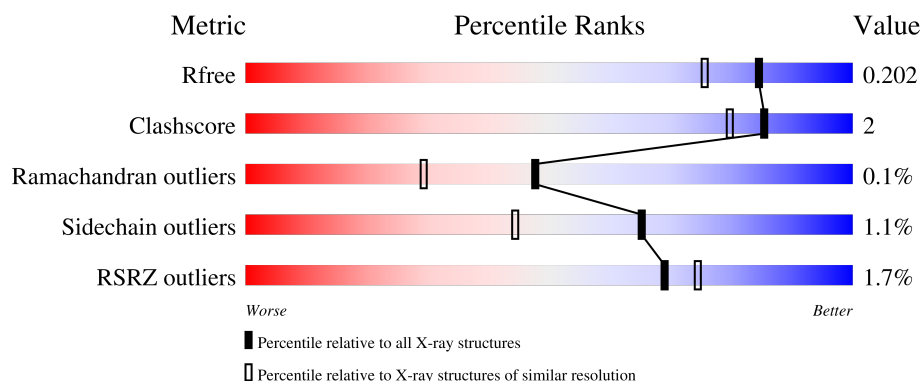
# 1 Overall quality at a glance

The following experimental techniques were used to determine the structure:

*X-RAY DIFFRACTION*

The reported resolution of this entry is 1.64 Å.

Percentile scores (ranging between 0-100) for global validation metrics of the entry are shown in the following graphic. The table shows the number of entries on which the scores are based.



Metric	Whole archive (#Entries)	Similar resolution (#Entries, resolution range(Å))
$R_{free}$	180053	1141 (1.64-1.64)
Clashscore	190562	1171 (1.64-1.64)
Ramachandran outliers	187476	1151 (1.64-1.64)
Sidechain outliers	187428	1150 (1.64-1.64)
RSRZ outliers	180081	1141 (1.64-1.64)

The table below summarises the geometric issues observed across the polymeric chains and their fit to the electron density. The red, orange, yellow and green segments of the lower bar indicate the fraction of residues that contain outliers for  $\geq 3$ , 2, 1 and 0 types of geometric quality criteria respectively. A grey segment represents the fraction of residues that are not modelled. The numeric value for each fraction is indicated below the corresponding segment, with a dot representing fractions  $\leq 5\%$ . The upper red bar (where present) indicates the fraction of residues that have poor fit to the electron density. The numeric value is given above the bar.

Mol	Chain	Length	Quality of chain
1	A	472	<div> <div>2%</div> <div> <div></div> <div>93%</div> <div>5% . .</div> </div> </div>
1	B	472	<div> <div></div> <div> <div>92%</div> <div>6% .</div> </div> </div>
1	C	472	<div> <div>5%</div> <div> <div></div> <div>90%</div> <div>7% .</div> </div> </div>
1	D	472	<div> <div></div> <div> <div>94%</div> <div>. .</div> </div> </div>

## 2 Entry composition

There are 9 unique types of molecules in this entry. The entry contains 16356 atoms, of which 0 are hydrogens and 0 are deuteriums.

In the tables below, the ZeroOcc column contains the number of atoms modelled with zero occupancy, the AltConf column contains the number of residues with at least one atom in alternate conformation and the Trace column contains the number of residues modelled with at most 2 atoms.

- Molecule 1 is a protein called Adenosylhomocysteinase.

Mol	Chain	Residues	Atoms					ZeroOcc	AltConf	Trace
1	A	464	Total	C	N	O	S	0	7	0
			3612	2279	623	687	23			
1	B	461	Total	C	N	O	S	0	7	0
			3597	2270	624	681	22			
1	C	460	Total	C	N	O	S	0	6	0
			3588	2262	620	683	23			
1	D	462	Total	C	N	O	S	0	6	0
			3596	2266	623	684	23			

There are 12 discrepancies between the modelled and reference sequences:

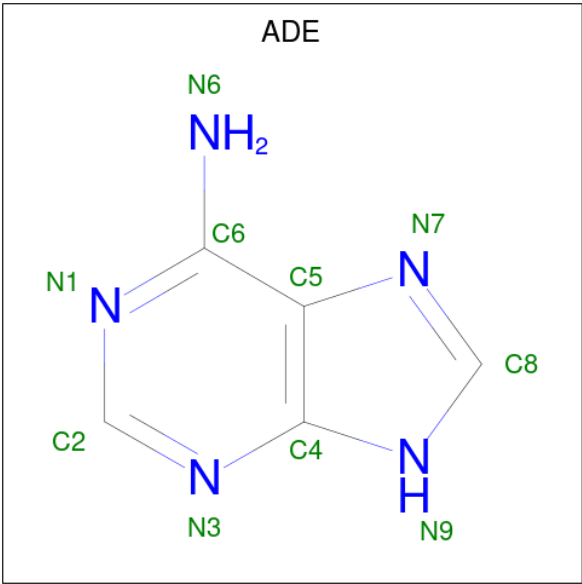
Chain	Residue	Modelled	Actual	Comment	Reference
A	-2	SER	-	expression tag	UNP Q9I685
A	-1	ASN	-	expression tag	UNP Q9I685
A	0	ALA	-	expression tag	UNP Q9I685
B	-2	SER	-	expression tag	UNP Q9I685
B	-1	ASN	-	expression tag	UNP Q9I685
B	0	ALA	-	expression tag	UNP Q9I685
C	-2	SER	-	expression tag	UNP Q9I685
C	-1	ASN	-	expression tag	UNP Q9I685
C	0	ALA	-	expression tag	UNP Q9I685
D	-2	SER	-	expression tag	UNP Q9I685
D	-1	ASN	-	expression tag	UNP Q9I685
D	0	ALA	-	expression tag	UNP Q9I685

- Molecule 2 is NICOTINAMIDE-ADENINE-DINUCLEOTIDE (CCD ID: NAD) (formula:  $C_{21}H_{27}N_7O_{14}P_2$ ).



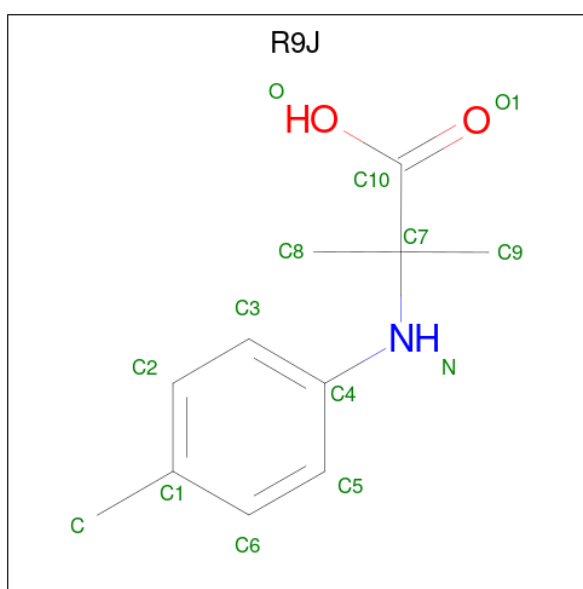
Mol	Chain	Residues	Atoms					ZeroOcc	AltConf
2	A	1	Total	C	N	O	P	0	0
			44	21	7	14	2		
2	B	1	Total	C	N	O	P	0	0
			44	21	7	14	2		
2	C	1	Total	C	N	O	P	0	0
			44	21	7	14	2		
2	D	1	Total	C	N	O	P	0	0
			44	21	7	14	2		

- Molecule 3 is ADENINE (CCD ID: ADE) (formula: C<sub>5</sub>H<sub>5</sub>N<sub>5</sub>).



Mol	Chain	Residues	Atoms			ZeroOcc	AltConf
3	A	1	Total	C	N	0	0
			10	5	5		
3	B	1	Total	C	N	0	0
			10	5	5		
3	C	1	Total	C	N	0	0
			10	5	5		
3	D	1	Total	C	N	0	0
			10	5	5		

- Molecule 4 is 2-methyl-N-(4-methylphenyl)-L-alanine (CCD ID: R9J) (formula:  $C_{11}H_{15}NO_2$ ) (labeled as "Ligand of Interest" by depositor).



Mol	Chain	Residues	Atoms				ZeroOcc	AltConf
4	A	1	Total	C	N	O	0	0
			14	11	1	2		

- Molecule 5 is GLYCEROL (CCD ID: GOL) (formula:  $C_3H_8O_3$ ).

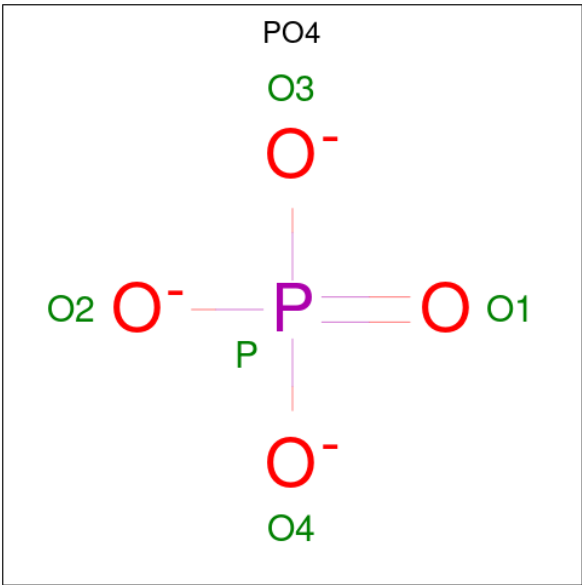


Mol	Chain	Residues	Atoms			ZeroOcc	AltConf
5	A	1	Total	C	O	0	0
			6	3	3		
5	B	1	Total	C	O	0	0
			6	3	3		
5	B	1	Total	C	O	0	0
			6	3	3		
5	B	1	Total	C	O	0	0
			6	3	3		

- Molecule 6 is POTASSIUM ION (CCD ID: K) (formula: K).

Mol	Chain	Residues	Atoms		ZeroOcc	AltConf
6	A	1	Total	K	0	0
			1	1		
6	B	1	Total	K	0	0
			1	1		
6	C	1	Total	K	0	0
			1	1		
6	D	1	Total	K	0	0
			1	1		

- Molecule 7 is PHOSPHATE ION (CCD ID: PO4) (formula: O<sub>4</sub>P).



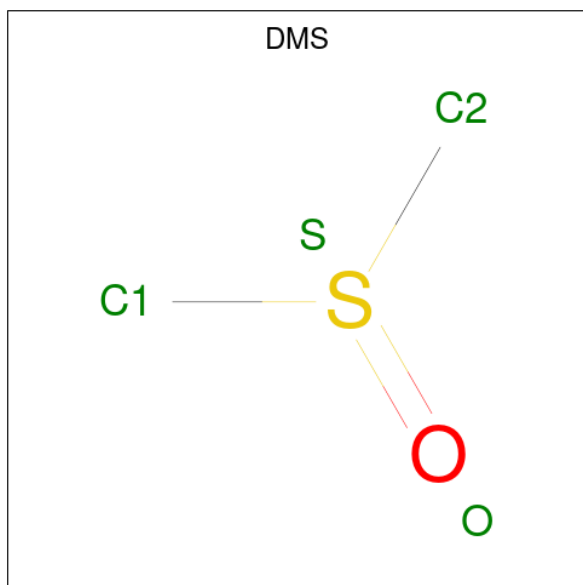
Mol	Chain	Residues	Atoms			ZeroOcc	AltConf
7	A	1	Total	O	P	0	0
			5	4	1		
			Total	O	P		
			5	4	1		
			Total	O	P		
7	B	1	Total	O	P	0	0
			5	4	1		
			Total	O	P		
			5	4	1		
			Total	O	P		
7	C	1	Total	O	P	0	0
			5	4	1		
			Total	O	P		
			5	4	1		
			Total	O	P		
7	D	1	Total	O	P	0	0
			5	4	1		
			Total	O	P		
			5	4	1		
			Total	O	P		

Continued on next page...

Continued from previous page...

Mol	Chain	Residues	Atoms			ZeroOcc	AltConf
7	D	1	Total	O	P	0	0
			5	4	1		
7	D	1	Total	O	P	0	0
			5	4	1		
7	D	1	Total	O	P	0	0
			5	4	1		

- Molecule 8 is DIMETHYL SULFOXIDE (CCD ID: DMS) (formula: C<sub>2</sub>H<sub>6</sub>OS).



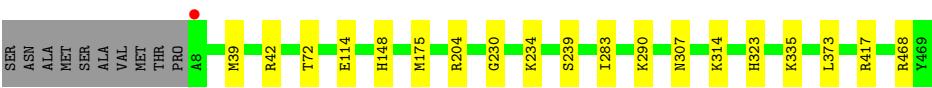
Mol	Chain	Residues	Atoms				ZeroOcc	AltConf
8	D	1	Total	C	O	S	0	0
			4	2	1	1		

- Molecule 9 is water.

Mol	Chain	Residues	Atoms		ZeroOcc	AltConf
9	A	385	Total	O	0	16
			400	400		
9	B	420	Total	O	0	14
			433	433		
9	C	349	Total	O	0	9
			358	358		
9	D	410	Total	O	0	16
			425	425		







## 4 Data and refinement statistics

Property	Value	Source
Space group	P 1 21 1	Depositor
Cell constants a, b, c, $\alpha$ , $\beta$ , $\gamma$	74.11Å 132.72Å 99.03Å 90.00° 101.41° 90.00°	Depositor
Resolution (Å)	27.39 – 1.64 27.39 – 1.64	Depositor EDS
% Data completeness (in resolution range)	97.2 (27.39-1.64) 97.4 (27.39-1.64)	Depositor EDS
$R_{merge}$	0.11	Depositor
$R_{sym}$	(Not available)	Depositor
$\langle I/\sigma(I) \rangle$ <sup>1</sup>	1.11 (at 1.64Å)	Xtriage
Refinement program	PHENIX 1.19.2-4158	Depositor
R, $R_{free}$	0.168 , 0.201 0.168 , 0.202	Depositor DCC
$R_{free}$ test set	2341 reflections (1.05%)	wwPDB-VP
Wilson B-factor (Å <sup>2</sup> )	23.7	Xtriage
Anisotropy	0.165	Xtriage
Bulk solvent $k_{sol}$ (e/Å <sup>3</sup> ), $B_{sol}$ (Å <sup>2</sup> )	0.39 , 56.1	EDS
L-test for twinning <sup>2</sup>	$\langle  L  \rangle = 0.51$ , $\langle L^2 \rangle = 0.34$	Xtriage
Estimated twinning fraction	No twinning to report.	Xtriage
$F_o, F_c$ correlation	0.97	EDS
Total number of atoms	16356	wwPDB-VP
Average B, all atoms (Å <sup>2</sup> )	31.0	wwPDB-VP

Xtriage's analysis on translational NCS is as follows: *The largest off-origin peak in the Patterson function is 4.02% of the height of the origin peak. No significant pseudotranslation is detected.*

<sup>1</sup>Intensities estimated from amplitudes.

<sup>2</sup>Theoretical values of  $\langle |L| \rangle$ ,  $\langle L^2 \rangle$  for acentric reflections are 0.5, 0.333 respectively for untwinned datasets, and 0.375, 0.2 for perfectly twinned datasets.

## 5 Model quality [i](#)

### 5.1 Standard geometry [i](#)

Bond lengths and bond angles in the following residue types are not validated in this section: NAD, GOL, DMS, K, PO4, R9J, ADE

The Z score for a bond length (or angle) is the number of standard deviations the observed value is removed from the expected value. A bond length (or angle) with  $|Z| > 5$  is considered an outlier worth inspection. RMSZ is the root-mean-square of all Z scores of the bond lengths (or angles).

Mol	Chain	Bond lengths		Bond angles	
		RMSZ	$\# Z  > 5$	RMSZ	$\# Z  > 5$
1	A	0.27	0/3691	0.46	0/4989
1	B	0.29	0/3678	0.48	0/4969
1	C	0.25	0/3663	0.43	0/4951
1	D	0.27	0/3668	0.46	0/4957
All	All	0.27	0/14700	0.46	0/19866

There are no bond length outliers.

There are no bond angle outliers.

There are no chirality outliers.

There are no planarity outliers.

### 5.2 Too-close contacts [i](#)

In the following table, the Non-H and H(model) columns list the number of non-hydrogen atoms and hydrogen atoms in the chain respectively. The H(added) column lists the number of hydrogen atoms added and optimized by MolProbity. The Clashes column lists the number of clashes within the asymmetric unit, whereas Symm-Clashes lists symmetry-related clashes.

Mol	Chain	Non-H	H(model)	H(added)	Clashes	Symm-Clashes
1	A	3612	0	3633	17	0
1	B	3597	0	3626	14	0
1	C	3588	0	3599	23	0
1	D	3596	0	3605	12	0
2	A	44	0	26	1	0
2	B	44	0	26	1	0
2	C	44	0	26	0	0
2	D	44	0	26	1	0
3	A	10	0	4	0	0

*Continued on next page...*

*Continued from previous page...*

Mol	Chain	Non-H	H(model)	H(added)	Clashes	Symm-Clashes
3	B	10	0	4	0	0
3	C	10	0	4	0	0
3	D	10	0	4	0	0
4	A	14	0	0	1	0
5	A	6	0	8	0	0
5	B	18	0	24	1	0
6	A	1	0	0	0	0
6	B	1	0	0	0	0
6	C	1	0	0	0	0
6	D	1	0	0	0	0
7	A	20	0	0	1	0
7	B	20	0	0	0	0
7	C	25	0	0	0	0
7	D	20	0	0	1	0
8	D	4	0	6	0	0
9	A	400	0	0	1	0
9	B	433	0	0	1	0
9	C	358	0	0	1	0
9	D	425	0	0	0	0
All	All	16356	0	14621	64	0

The all-atom clashscore is defined as the number of clashes found per 1000 atoms (including hydrogen atoms). The all-atom clashscore for this structure is 2.

All (64) close contacts within the same asymmetric unit are listed below, sorted by their clash magnitude.

Atom-1	Atom-2	Interatomic distance (Å)	Clash overlap (Å)
1:C:189:ASN:HA	1:C:194:LYS:HD2	1.72	0.71
1:B:396:LEU:HD13	1:B:427:LEU:HD22	1.78	0.66
1:A:351:ARG:NH2	7:A:506:PO4:O4	2.31	0.63
1:D:39[A]:MET:HE1	1:D:42:ARG:CZ	2.30	0.62
1:C:409:LEU:HD11	1:C:417:ARG:HH11	1.69	0.57
1:B:373:LEU:HD22	2:B:502:NAD:N7N	2.19	0.57
1:A:6:THR:N	1:A:100:ALA:O	2.38	0.56
1:B:14:LYS:NZ	9:B:603[A]:HOH:O	2.39	0.56
1:A:273:ASN:ND2	4:A:503:R9J:O1	2.36	0.56
1:C:39[A]:MET:HE1	1:C:42:ARG:CZ	2.36	0.56
1:A:39[A]:MET:HE1	1:A:42:ARG:CZ	2.38	0.53
1:C:121[B]:GLU:OE1	1:C:151:TYR:OH	2.25	0.53
1:C:197:ASN:HA	1:C:201:TYR:HD2	1.74	0.52
1:C:160:GLY:HA3	1:C:401:LEU:HD13	1.92	0.52

*Continued on next page...*

*Continued from previous page...*

Atom-1	Atom-2	Interatomic distance (Å)	Clash overlap (Å)
1:B:400:HIS:O	1:B:404[B]:GLN:HG2	2.09	0.51
1:D:373:LEU:HD22	2:D:502:NAD:N7N	2.26	0.51
1:A:160:GLY:HA3	1:A:401:LEU:HD13	1.93	0.51
1:D:314:LYS:HG3	7:D:505:PO4:O3	2.10	0.51
1:C:204[B]:ARG:HA	1:C:239:SER:HB2	1.93	0.51
1:D:204[B]:ARG:HA	1:D:239:SER:HB2	1.93	0.51
1:C:148:HIS:CD2	1:C:182:LYS:HG2	2.46	0.50
1:A:121:GLU:OE1	1:A:151:TYR:OH	2.26	0.50
1:A:189:ASN:HA	1:A:194:LYS:HD2	1.93	0.50
1:C:204[A]:ARG:HA	1:C:239:SER:HB2	1.94	0.49
1:D:204[A]:ARG:HA	1:D:239:SER:HB2	1.94	0.49
1:B:44:LYS:HD3	1:B:45:TYR:CE2	2.47	0.49
1:D:148:HIS:CG	1:D:175:MET:HE1	2.48	0.48
1:C:194:LYS:C	1:C:194:LYS:HD3	2.39	0.48
1:A:174[B]:ASP:OD1	1:A:177:LYS:NZ	2.46	0.48
1:C:44:LYS:HE2	1:C:45:TYR:CE2	2.49	0.47
1:D:42:ARG:HG3	1:D:72:THR:HG23	1.97	0.47
1:C:171:ARG:O	1:C:175:MET:HG3	2.14	0.46
1:A:409:LEU:O	1:A:414:LYS:HE3	2.15	0.46
1:B:160:GLY:HA3	1:B:401:LEU:HD13	1.98	0.45
1:A:373:LEU:HD23	2:A:501:NAD:N7N	2.32	0.45
1:B:449:LYS:HD3	9:C:875:HOH:O	2.15	0.45
1:C:318:VAL:HG12	1:C:328:ILE:HD13	1.99	0.44
1:B:318:VAL:HG12	1:B:328:ILE:HD13	2.00	0.44
1:C:197:ASN:O	1:C:201:TYR:HB2	2.18	0.44
1:A:283:ILE:HG13	1:A:307:ASN:HB3	2.00	0.44
1:D:283:ILE:HG13	1:D:307:ASN:HB3	2.00	0.43
1:A:189:ASN:O	1:A:195:SER:HB3	2.18	0.43
1:B:189:ASN:HA	1:B:194:LYS:HD2	1.99	0.43
1:B:290:LYS:HB3	1:B:290:LYS:HE3	1.75	0.43
1:A:197:ASN:HA	1:A:201:TYR:HD2	1.83	0.43
1:C:155:LEU:HD23	1:C:158:ILE:HD12	2.00	0.43
1:C:323:HIS:HA	1:C:373:LEU:HD21	1.99	0.43
1:A:196[A]:LYS:HE3	1:D:468:ARG:HB2	2.00	0.43
1:C:118:TRP:O	1:C:122:GLN:HG2	2.19	0.43
1:A:373:LEU:HD12	9:A:695:HOH:O	2.18	0.43
1:C:189:ASN:O	1:C:195:SER:HB3	2.19	0.42
1:D:230:GLY:O	1:D:234:LYS:HG3	2.20	0.42
1:A:194:LYS:HD3	1:A:194:LYS:C	2.45	0.42
1:C:197:ASN:HA	1:C:201:TYR:CD2	2.54	0.41
1:B:468:ARG:HB2	1:C:196:LYS:HE3	2.03	0.41

*Continued on next page...*

Continued from previous page...

Atom-1	Atom-2	Interatomic distance (Å)	Clash overlap (Å)
1:C:55:LYS:HB3	1:C:131:TRP:CH2	2.55	0.41
1:A:318:VAL:HG12	1:A:328:ILE:HD13	2.02	0.41
1:B:380:THR:HG22	5:B:501:GOL:H32	2.02	0.41
1:B:204[B]:ARG:HA	1:B:239:SER:HB2	2.03	0.41
1:C:60:ILE:O	1:C:61:HIS:C	2.64	0.41
1:C:148:HIS:CD2	1:C:175:MET:HE1	2.55	0.41
1:D:323:HIS:HA	1:D:373:LEU:HD21	2.03	0.40
1:B:429:GLU:OE1	1:B:461:PRO:HA	2.22	0.40
1:D:148:HIS:CD2	1:D:175:MET:HE1	2.57	0.40

There are no symmetry-related clashes.

## 5.3 Torsion angles [i](#)

### 5.3.1 Protein backbone [i](#)

In the following table, the Percentiles column shows the percent Ramachandran outliers of the chain as a percentile score with respect to all X-ray entries followed by that with respect to entries of similar resolution.

The Analysed column shows the number of residues for which the backbone conformation was analysed, and the total number of residues.

Mol	Chain	Analysed	Favoured	Allowed	Outliers	Percentiles	
1	A	469/472 (99%)	454 (97%)	14 (3%)	1 (0%)	43	27
1	B	466/472 (99%)	454 (97%)	12 (3%)	0	100	100
1	C	464/472 (98%)	453 (98%)	10 (2%)	1 (0%)	43	27
1	D	466/472 (99%)	457 (98%)	9 (2%)	0	100	100
All	All	1865/1888 (99%)	1818 (98%)	45 (2%)	2 (0%)	48	29

All (2) Ramachandran outliers are listed below:

Mol	Chain	Res	Type
1	C	61	HIS
1	A	355	ASP

### 5.3.2 Protein sidechains ⓘ

In the following table, the Percentiles column shows the percent sidechain outliers of the chain as a percentile score with respect to all X-ray entries followed by that with respect to entries of similar resolution.

The Analysed column shows the number of residues for which the sidechain conformation was analysed, and the total number of residues.

Mol	Chain	Analysed	Rotameric	Outliers	Percentiles	
1	A	386/385 (100%)	383 (99%)	3 (1%)	73	58
1	B	384/385 (100%)	378 (98%)	6 (2%)	55	30
1	C	383/385 (100%)	379 (99%)	4 (1%)	68	49
1	D	382/385 (99%)	378 (99%)	4 (1%)	68	49
All	All	1535/1540 (100%)	1518 (99%)	17 (1%)	65	44

All (17) residues with a non-rotameric sidechain are listed below:

Mol	Chain	Res	Type
1	A	6	THR
1	A	42	ARG
1	A	197	ASN
1	B	42	ARG
1	B	165	THR
1	B	166	THR
1	B	177	LYS
1	B	335	LYS
1	B	417	ARG
1	C	166	THR
1	C	290	LYS
1	C	335	LYS
1	C	373	LEU
1	D	114	GLU
1	D	290	LYS
1	D	335	LYS
1	D	417	ARG

Sometimes sidechains can be flipped to improve hydrogen bonding and reduce clashes. All (7) such sidechains are listed below:

Mol	Chain	Res	Type
1	B	170	HIS
1	B	197	ASN

*Continued on next page...*



*Continued from previous page...*

Mol	Chain	Res	Type
1	B	361	ASN
1	B	445	GLN
1	C	170	HIS
1	D	170	HIS
1	D	445	GLN

### 5.3.3 RNA [i](#)

There are no RNA molecules in this entry.

## 5.4 Non-standard residues in protein, DNA, RNA chains [i](#)

There are no non-standard protein/DNA/RNA residues in this entry.

## 5.5 Carbohydrates [i](#)

There are no oligosaccharides in this entry.

## 5.6 Ligand geometry [i](#)

Of 35 ligands modelled in this entry, 4 are monoatomic - leaving 31 for Mogul analysis.

In the following table, the Counts columns list the number of bonds (or angles) for which Mogul statistics could be retrieved, the number of bonds (or angles) that are observed in the model and the number of bonds (or angles) that are defined in the Chemical Component Dictionary. The Link column lists molecule types, if any, to which the group is linked. The Z score for a bond length (or angle) is the number of standard deviations the observed value is removed from the expected value. A bond length (or angle) with  $|Z| > 2$  is considered an outlier worth inspection. RMSZ is the root-mean-square of all Z scores of the bond lengths (or angles).

Mol	Type	Chain	Res	Link	Bond lengths			Bond angles		
					Counts	RMSZ	$\# Z  > 2$	Counts	RMSZ	$\# Z  > 2$
7	PO4	A	508	-	4,4,4	1.05	0	6,6,6	0.36	0
5	GOL	A	504	-	5,5,5	0.86	0	5,5,5	1.16	0
7	PO4	D	505	-	4,4,4	1.09	0	6,6,6	0.56	0
8	DMS	D	501	-	3,3,3	0.71	0	3,3,3	0.75	0
7	PO4	D	506	-	4,4,4	0.98	0	6,6,6	0.48	0
7	PO4	A	509	-	4,4,4	1.04	0	6,6,6	0.55	0
7	PO4	A	507	-	4,4,4	1.03	0	6,6,6	0.53	0
2	NAD	B	502	-	46,48,48	0.33	0	64,73,73	0.48	0
7	PO4	B	508	-	4,4,4	0.84	0	6,6,6	1.12	0

Mol	Type	Chain	Res	Link	Bond lengths			Bond angles		
					Counts	RMSZ	# Z  > 2	Counts	RMSZ	# Z  > 2
3	ADE	D	503	-	11,11,11	0.59	0	15,15,15	0.40	0
5	GOL	B	505	-	5,5,5	1.09	0	5,5,5	0.94	0
7	PO4	C	505	-	4,4,4	0.98	0	6,6,6	0.49	0
3	ADE	C	502	-	11,11,11	0.57	0	15,15,15	0.40	0
7	PO4	B	509	-	4,4,4	0.89	0	6,6,6	0.53	0
7	PO4	D	507	-	4,4,4	0.99	0	6,6,6	0.66	0
7	PO4	D	508	-	4,4,4	0.91	0	6,6,6	0.54	0
5	GOL	B	501	-	5,5,5	1.21	0	5,5,5	0.85	0
7	PO4	C	504	-	4,4,4	0.98	0	6,6,6	0.64	0
2	NAD	D	502	-	46,48,48	0.36	0	64,73,73	0.52	0
7	PO4	C	508	-	4,4,4	0.85	0	6,6,6	0.87	0
4	R9J	A	503	-	14,14,14	0.96	1 (7%)	20,20,20	0.99	1 (5%)
7	PO4	C	507	-	4,4,4	0.94	0	6,6,6	0.71	0
7	PO4	B	510	-	4,4,4	0.80	0	6,6,6	0.51	0
3	ADE	B	503	-	11,11,11	0.44	0	15,15,15	0.40	0
7	PO4	A	506	-	4,4,4	1.01	0	6,6,6	0.76	0
7	PO4	B	507	-	4,4,4	1.04	0	6,6,6	0.47	0
7	PO4	C	506	-	4,4,4	0.98	0	6,6,6	0.57	0
5	GOL	B	504	-	5,5,5	1.26	1 (20%)	5,5,5	1.06	0
2	NAD	C	501	-	46,48,48	0.41	0	64,73,73	0.52	0
2	NAD	A	501	-	46,48,48	0.40	0	64,73,73	0.51	0
3	ADE	A	502	-	11,11,11	0.57	0	15,15,15	0.40	0

In the following table, the Chirals column lists the number of chiral outliers, the number of chiral centers analysed, the number of these observed in the model and the number defined in the Chemical Component Dictionary. Similar counts are reported in the Torsion and Rings columns. '-' means no outliers of that kind were identified.

Mol	Type	Chain	Res	Link	Chirals	Torsions	Rings
5	GOL	A	504	-	-	2/4/4/4	-
2	NAD	B	502	-	-	4/30/62/62	0/5/5/5
5	GOL	B	501	-	-	0/4/4/4	-
3	ADE	B	503	-	-	-	0/2/2/2
3	ADE	D	503	-	-	-	0/2/2/2
2	NAD	D	502	-	-	4/30/62/62	0/5/5/5
5	GOL	B	505	-	-	0/4/4/4	-
4	R9J	A	503	-	-	7/11/11/11	0/1/1/1
5	GOL	B	504	-	-	3/4/4/4	-
2	NAD	C	501	-	-	5/30/62/62	0/5/5/5
2	NAD	A	501	-	-	4/30/62/62	0/5/5/5
3	ADE	C	502	-	-	-	0/2/2/2

Continued on next page...

*Continued from previous page...*

Mol	Type	Chain	Res	Link	Chirals	Torsions	Rings
3	ADE	A	502	-	-	-	0/2/2/2

All (2) bond length outliers are listed below:

Mol	Chain	Res	Type	Atoms	Z	Observed(Å)	Ideal(Å)
4	A	503	R9J	C4-N	2.84	1.45	1.40
5	B	504	GOL	O2-C2	-2.10	1.37	1.43

All (1) bond angle outliers are listed below:

Mol	Chain	Res	Type	Atoms	Z	Observed(°)	Ideal(°)
4	A	503	R9J	C9-C7-N	2.15	113.49	109.12

There are no chirality outliers.

All (29) torsion outliers are listed below:

Mol	Chain	Res	Type	Atoms
2	A	501	NAD	O4D-C1D-N1N-C2N
2	A	501	NAD	O4D-C1D-N1N-C6N
2	A	501	NAD	C2D-C1D-N1N-C2N
2	A	501	NAD	C2D-C1D-N1N-C6N
2	B	502	NAD	O4D-C1D-N1N-C2N
2	B	502	NAD	O4D-C1D-N1N-C6N
2	B	502	NAD	C2D-C1D-N1N-C2N
2	B	502	NAD	C2D-C1D-N1N-C6N
2	C	501	NAD	O4D-C1D-N1N-C2N
2	C	501	NAD	O4D-C1D-N1N-C6N
2	C	501	NAD	C2D-C1D-N1N-C2N
2	C	501	NAD	C2D-C1D-N1N-C6N
2	D	502	NAD	O4D-C1D-N1N-C2N
2	D	502	NAD	O4D-C1D-N1N-C6N
2	D	502	NAD	C2D-C1D-N1N-C2N
2	D	502	NAD	C2D-C1D-N1N-C6N
4	A	503	R9J	C8-C7-N-C4
5	A	504	GOL	O1-C1-C2-C3
4	A	503	R9J	C10-C7-N-C4
5	A	504	GOL	O1-C1-C2-O2
5	B	504	GOL	O1-C1-C2-C3
5	B	504	GOL	O1-C1-C2-O2
4	A	503	R9J	O1-C10-C7-C9
4	A	503	R9J	O-C10-C7-C9

*Continued on next page...*

*Continued from previous page...*

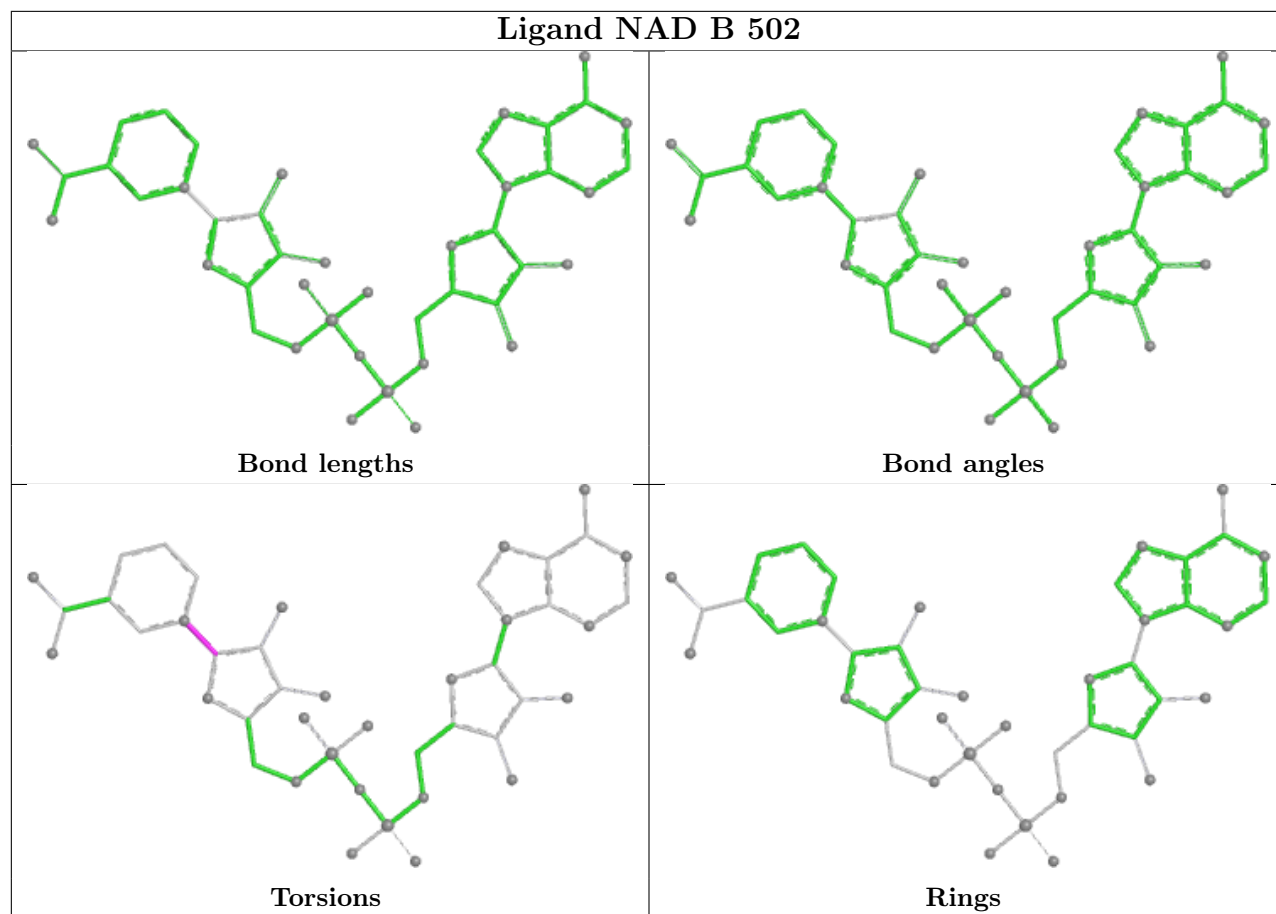
Mol	Chain	Res	Type	Atoms
4	A	503	R9J	O1-C10-C7-N
5	B	504	GOL	O2-C2-C3-O3
4	A	503	R9J	O-C10-C7-N
4	A	503	R9J	C3-C4-N-C7
2	C	501	NAD	O4B-C4B-C5B-O5B

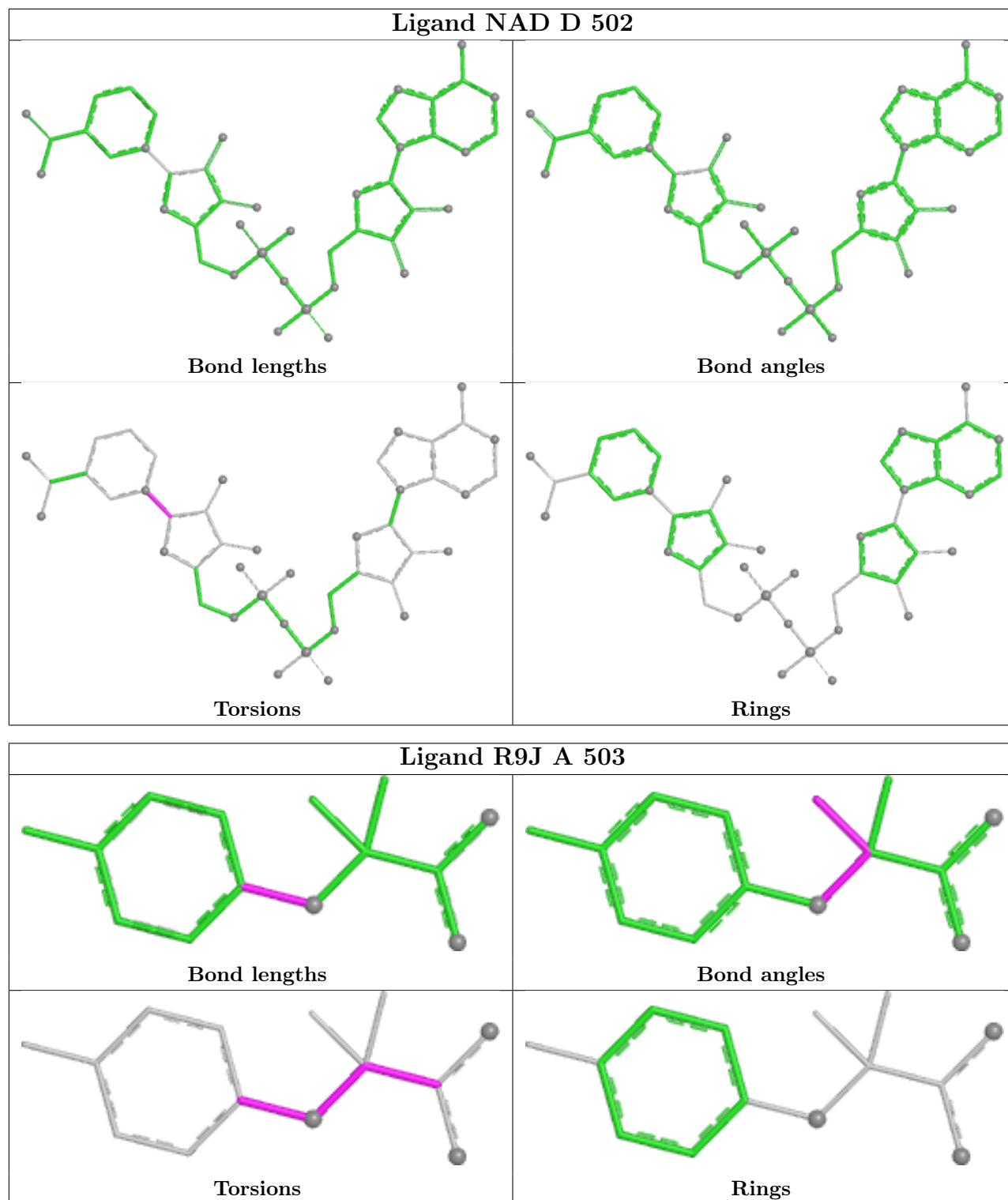
There are no ring outliers.

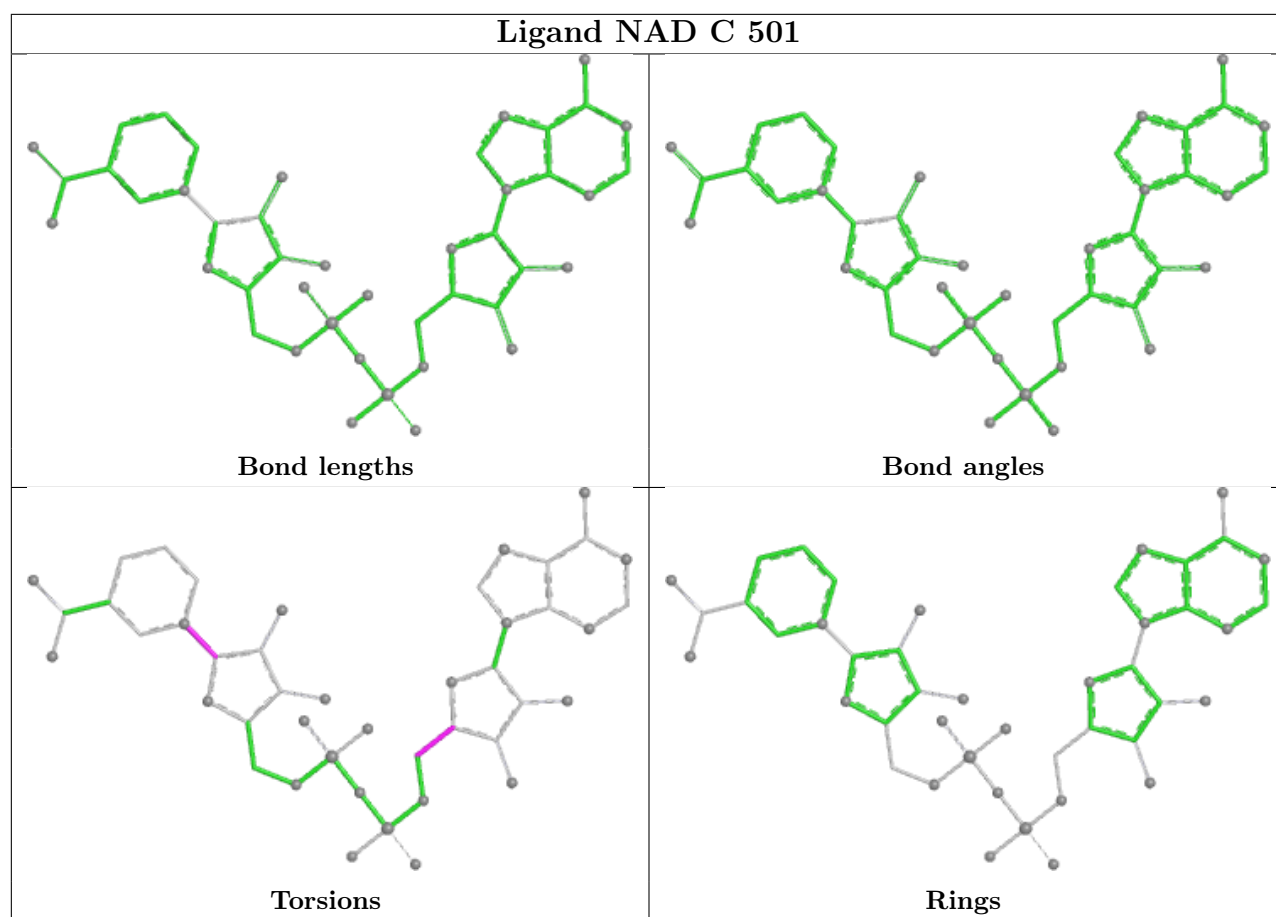
7 monomers are involved in 7 short contacts:

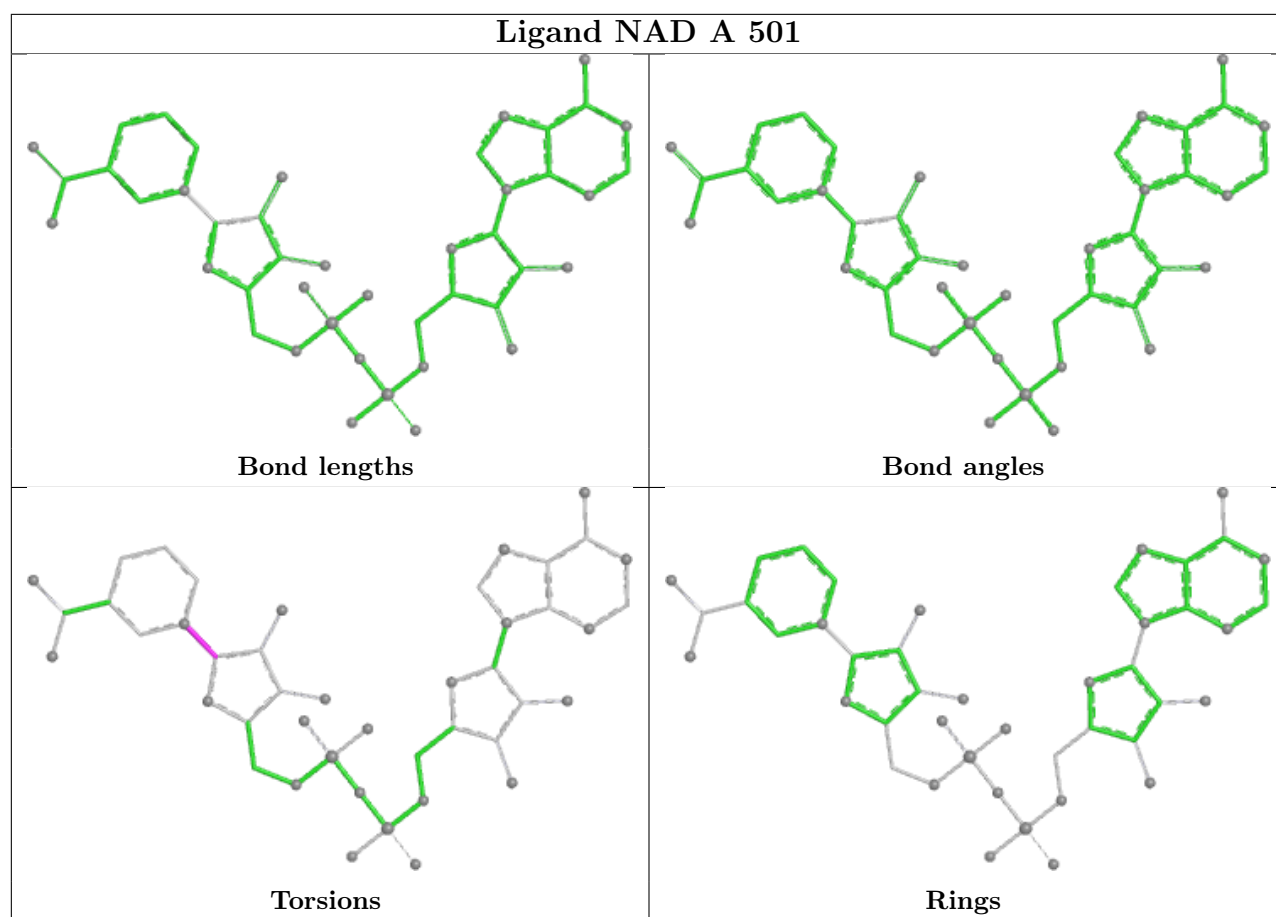
Mol	Chain	Res	Type	Clashes	Symm-Clashes
7	D	505	PO4	1	0
2	B	502	NAD	1	0
5	B	501	GOL	1	0
2	D	502	NAD	1	0
4	A	503	R9J	1	0
7	A	506	PO4	1	0
2	A	501	NAD	1	0

The following is a two-dimensional graphical depiction of Mogul quality analysis of bond lengths, bond angles, torsion angles, and ring geometry for all instances of the Ligand of Interest. In addition, ligands with molecular weight > 250 and outliers as shown on the validation Tables will also be included. For torsion angles, if less than 5% of the Mogul distribution of torsion angles is within 10 degrees of the torsion angle in question, then that torsion angle is considered an outlier. Any bond that is central to one or more torsion angles identified as an outlier by Mogul will be highlighted in the graph. For rings, the root-mean-square deviation (RMSD) between the ring in question and similar rings identified by Mogul is calculated over all ring torsion angles. If the average RMSD is greater than 60 degrees and the minimal RMSD between the ring in question and any Mogul-identified rings is also greater than 60 degrees, then that ring is considered an outlier. The outliers are highlighted in purple. The color gray indicates Mogul did not find sufficient equivalents in the CSD to analyse the geometry.









## 5.7 Other polymers [i](#)

There are no such residues in this entry.

## 5.8 Polymer linkage issues [i](#)

There are no chain breaks in this entry.



## 6 Fit of model and data

### 6.1 Protein, DNA and RNA chains

In the following table, the column labelled ‘#RSRZ> 2’ contains the number (and percentage) of RSRZ outliers, followed by percent RSRZ outliers for the chain as percentile scores relative to all X-ray entries and entries of similar resolution. The OWAB column contains the minimum, median, 95<sup>th</sup> percentile and maximum values of the occupancy-weighted average B-factor per residue. The column labelled ‘Q< 0.9’ lists the number of (and percentage) of residues with an average occupancy less than 0.9.

Mol	Chain	Analysed	<RSRZ>	#RSRZ>2	OWAB(Å <sup>2</sup> )	Q<0.9
1	A	464/472 (98%)	-0.19	8 (1%) 69 74	10, 28, 52, 97	7 (1%)
1	B	461/472 (97%)	-0.39	1 (0%) 91 92	11, 26, 44, 70	7 (1%)
1	C	460/472 (97%)	0.06	22 (4%) 35 41	10, 32, 63, 100	6 (1%)
1	D	462/472 (97%)	-0.32	1 (0%) 91 92	12, 28, 45, 71	6 (1%)
All	All	1847/1888 (97%)	-0.21	32 (1%) 69 74	10, 28, 52, 100	26 (1%)

All (32) RSRZ outliers are listed below:

Mol	Chain	Res	Type	RSRZ
1	C	411	ALA	3.4
1	C	172	LEU	3.2
1	A	6	THR	3.0
1	C	165	THR	3.0
1	C	412	ALA	3.0
1	D	8	ALA	2.9
1	A	412	ALA	2.9
1	C	418	LEU	2.9
1	A	278	GLY	2.7
1	C	152	PRO	2.7
1	C	417	ARG	2.6
1	A	181	LEU	2.6
1	C	409	LEU	2.6
1	C	176	LEU	2.5
1	B	9	GLY	2.4
1	A	415	ALA	2.4
1	C	183	VAL	2.4
1	C	167	THR	2.3
1	C	169	VAL	2.3
1	C	166	THR	2.3
1	C	413	GLU	2.2

*Continued on next page...*

*Continued from previous page...*

Mol	Chain	Res	Type	RSRZ
1	A	411	ALA	2.2
1	C	168	GLY	2.2
1	C	406	TYR	2.2
1	C	180	THR	2.2
1	C	155	LEU	2.1
1	C	181	LEU	2.1
1	C	146	ILE	2.1
1	A	196[A]	LYS	2.1
1	A	410	PRO	2.0
1	C	410	PRO	2.0
1	C	416	LYS	2.0

## 6.2 Non-standard residues in protein, DNA, RNA chains [i](#)

There are no non-standard protein/DNA/RNA residues in this entry.

## 6.3 Carbohydrates [i](#)

There are no oligosaccharides in this entry.

## 6.4 Ligands [i](#)

In the following table, the Atoms column lists the number of modelled atoms in the group and the number defined in the chemical component dictionary. The B-factors column lists the minimum, median, 95<sup>th</sup> percentile and maximum values of B factors of atoms in the group. The column labelled 'Q< 0.9' lists the number of atoms with occupancy less than 0.9.

Mol	Type	Chain	Res	Atoms	RSCC	RSR	B-factors(Å <sup>2</sup> )	Q<0.9
8	DMS	D	501	4/4	0.77	0.13	34,35,54,75	0
5	GOL	B	504	6/6	0.80	0.13	37,39,44,44	0
7	PO4	C	505	5/5	0.82	0.12	42,43,45,61	0
4	R9J	A	503	14/14	0.85	0.13	36,39,43,44	14
7	PO4	C	508	5/5	0.86	0.12	26,30,38,40	5
7	PO4	A	508	5/5	0.89	0.10	32,34,37,45	0
7	PO4	D	507	5/5	0.90	0.14	39,39,40,42	5
7	PO4	A	509	5/5	0.90	0.10	36,39,43,46	5
7	PO4	B	507	5/5	0.91	0.12	37,38,41,46	5
7	PO4	D	505	5/5	0.91	0.14	34,37,39,40	5
5	GOL	B	505	6/6	0.91	0.09	33,40,41,41	0
7	PO4	C	506	5/5	0.91	0.10	38,40,43,46	5

*Continued on next page...*

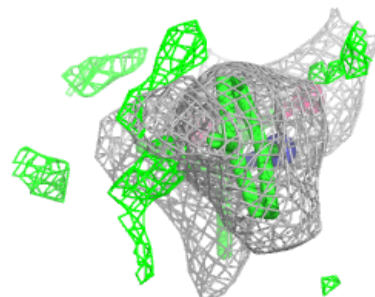
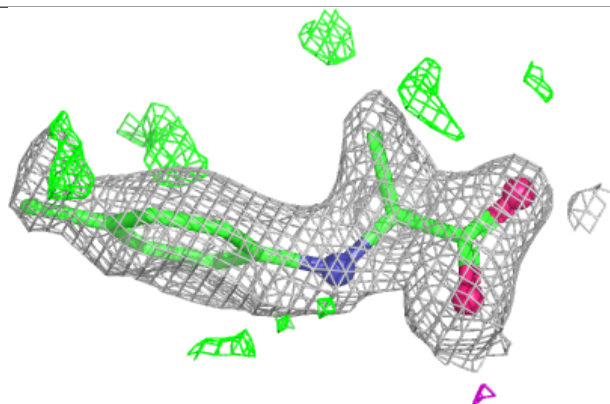
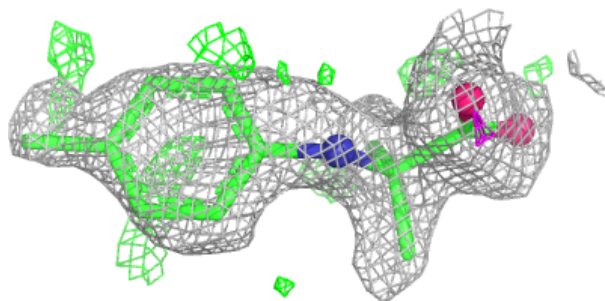
*Continued from previous page...*

Mol	Type	Chain	Res	Atoms	RSCC	RSR	B-factors( $\text{\AA}^2$ )	Q<0.9
7	PO4	A	506	5/5	0.92	0.13	34,34,37,41	5
7	PO4	C	504	5/5	0.92	0.12	34,36,39,41	5
7	PO4	D	506	5/5	0.92	0.11	25,27,33,40	0
5	GOL	A	504	6/6	0.92	0.09	35,37,40,41	0
5	GOL	B	501	6/6	0.92	0.09	30,35,38,42	0
7	PO4	B	508	5/5	0.93	0.10	22,25,27,31	5
7	PO4	B	509	5/5	0.93	0.10	33,34,40,44	5
7	PO4	C	507	5/5	0.96	0.07	31,38,40,44	0
3	ADE	C	502	10/10	0.97	0.05	25,28,30,32	0
3	ADE	D	503	10/10	0.97	0.05	21,24,25,25	0
7	PO4	A	507	5/5	0.98	0.05	28,33,35,36	5
2	NAD	C	501	44/44	0.98	0.05	19,23,28,29	0
2	NAD	D	502	44/44	0.98	0.05	21,23,26,31	0
3	ADE	A	502	10/10	0.98	0.04	20,21,24,24	0
3	ADE	B	503	10/10	0.98	0.04	21,22,24,24	0
2	NAD	A	501	44/44	0.98	0.04	19,21,24,24	0
7	PO4	B	510	5/5	0.98	0.05	22,26,28,29	5
7	PO4	D	508	5/5	0.98	0.09	28,31,33,34	0
2	NAD	B	502	44/44	0.98	0.04	18,22,26,30	0
6	K	A	505	1/1	0.99	0.03	21,21,21,21	0
6	K	C	503	1/1	0.99	0.06	25,25,25,25	0
6	K	D	504	1/1	0.99	0.03	23,23,23,23	0
6	K	B	506	1/1	1.00	0.05	20,20,20,20	0

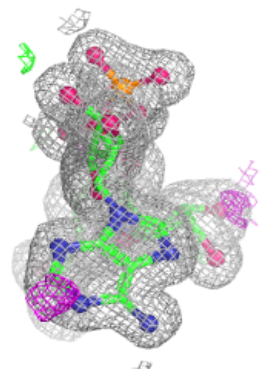
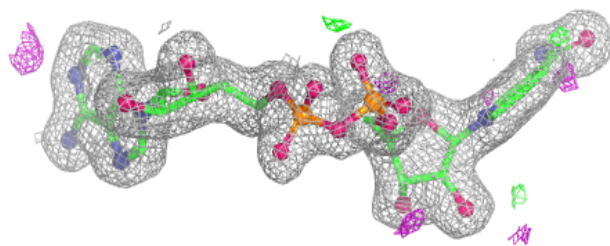
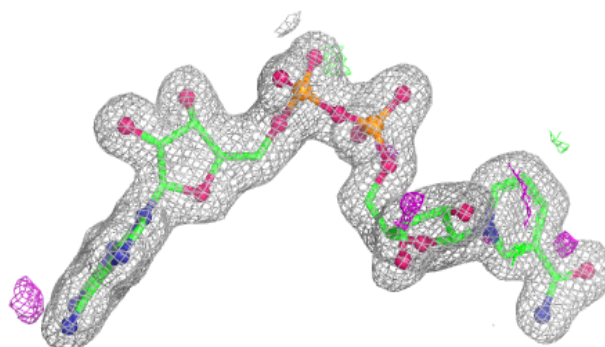
The following is a graphical depiction of the model fit to experimental electron density of all instances of the Ligand of Interest. In addition, ligands with molecular weight > 250 and outliers as shown on the geometry validation Tables will also be included. Each fit is shown from different orientation to approximate a three-dimensional view.

**Electron density around R9J A 503:**

$2mF_o-DF_c$  (at 0.7 rmsd) in gray  
 $mF_o-DF_c$  (at 3 rmsd) in purple (negative)  
and green (positive)

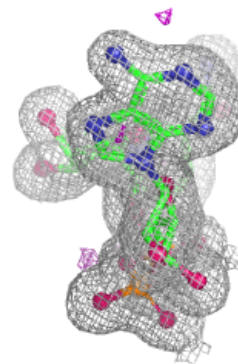
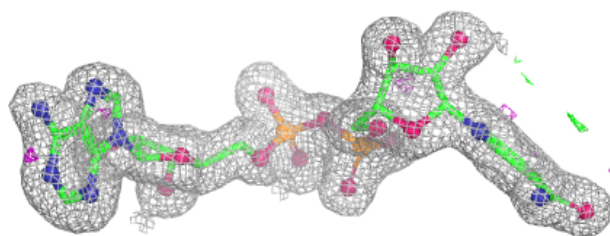
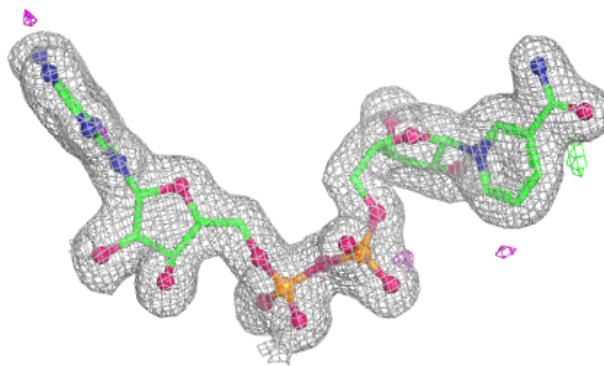
**Electron density around NAD C 501:**

$2mF_o-DF_c$  (at 0.7 rmsd) in gray  
 $mF_o-DF_c$  (at 3 rmsd) in purple (negative)  
and green (positive)

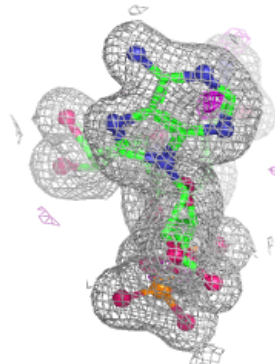
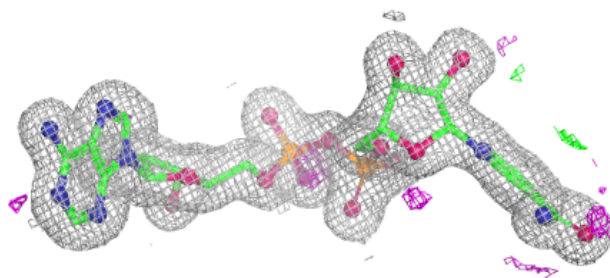
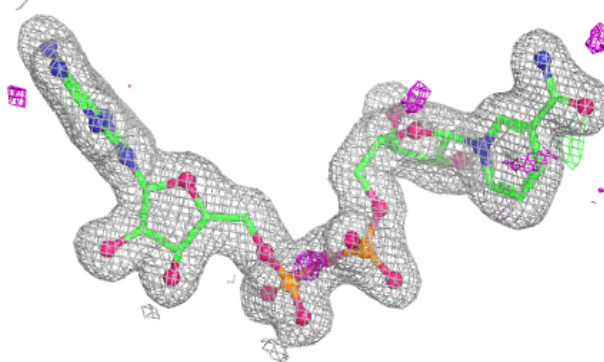


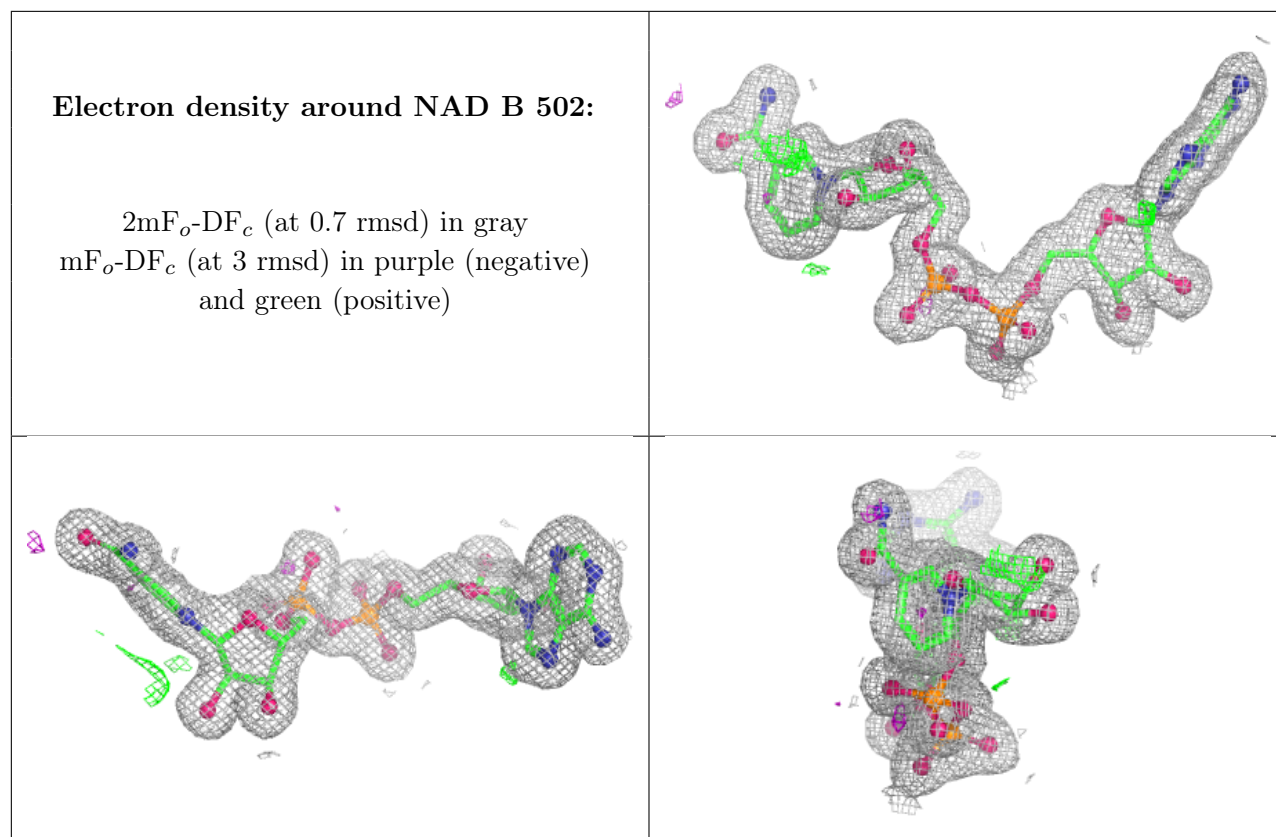
**Electron density around NAD D 502:**

$2mF_o-DF_c$  (at 0.7 rmsd) in gray  
 $mF_o-DF_c$  (at 3 rmsd) in purple (negative)  
and green (positive)

**Electron density around NAD A 501:**

$2mF_o-DF_c$  (at 0.7 rmsd) in gray  
 $mF_o-DF_c$  (at 3 rmsd) in purple (negative)  
and green (positive)





## 6.5 Other polymers [i](#)

There are no such residues in this entry.