



Full wwPDB X-ray Structure Validation Report ⓘ

Mar 6, 2026 – 09:27 PM UTC

PDB ID : 8DSE / pdb_00008dse
Title : Human NAMPT in complex with substrate NAM and activator quercitrin
Authors : Ratia, K.; Xiong, R.; Shen, Z.; Thatcher, G.R.
Deposited on : 2022-07-22
Resolution : 1.43 Å(reported)

This is a Full wwPDB X-ray Structure Validation Report for a publicly released PDB entry.

We welcome your comments at validation@mail.wwpdb.org

A user guide is available at

<https://www.wwpdb.org/validation/2017/XrayValidationReportHelp>

with specific help available everywhere you see the ⓘ symbol.

The types of validation reports are described at

<http://www.wwpdb.org/validation/2017/FAQs#types>.

The following versions of software and data (see [references ⓘ](#)) were used in the production of this report:

MolProbity : 4-5-2 with Phenix2.0
Mogul : 2022.3.0, CSD as543be (2022)
Xtriage (Phenix) : 2.0
EDS : 3.0
Buster-report : wwPDB partial adaption of 1.1.7 (2018)
Percentile statistics : 20250101.v01 (using entries in the PDB archive January 1st 2025)
CCP4 : 9.0.010 (Gargrove)
Density-Fitness : 1.0.12
Ideal geometry (proteins) : Engh & Huber (2001)
Ideal geometry (DNA, RNA) : Parkinson et al. (1996)
Validation Pipeline (wwPDB-VP) : 2.49

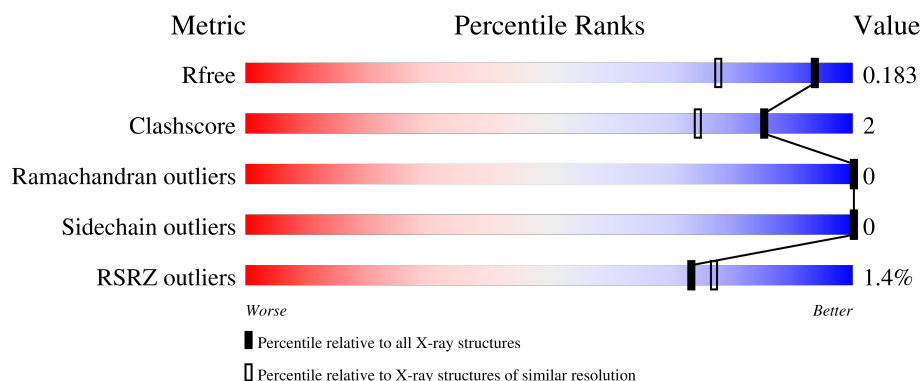
1 Overall quality at a glance

The following experimental techniques were used to determine the structure:

X-RAY DIFFRACTION



The reported resolution of this entry is 1.43 Å.

Percentile scores (ranging between 0-100) for global validation metrics of the entry are shown in the following graphic. The table shows the number of entries on which the scores are based.



Metric	Whole archive (#Entries)	Similar resolution (#Entries, resolution range(Å))
R_{free}	180053	4041 (1.44-1.40)
Clashscore	190562	4154 (1.44-1.40)
Ramachandran outliers	187476	4083 (1.44-1.40)
Sidechain outliers	187428	4082 (1.44-1.40)
RSRZ outliers	180081	4039 (1.44-1.40)

The table below summarises the geometric issues observed across the polymeric chains and their fit to the electron density. The red, orange, yellow and green segments of the lower bar indicate the fraction of residues that contain outliers for ≥ 3 , 2, 1 and 0 types of geometric quality criteria respectively. A grey segment represents the fraction of residues that are not modelled. The numeric value for each fraction is indicated below the corresponding segment, with a dot representing fractions $\leq 5\%$. The upper red bar (where present) indicates the fraction of residues that have poor fit to the electron density. The numeric value is given above the bar.

Mol	Chain	Length	Quality of chain
1	A	499	
1	B	499	

The following table lists non-polymeric compounds, carbohydrate monomers and non-standard residues in protein, DNA, RNA chains that are outliers for geometric or electron-density-fit criteria:

Mol	Type	Chain	Res	Chirality	Geometry	Clashes	Electron density
5	QCT	B	1103[D]	-	-	X	-

2 Entry composition

There are 6 unique types of molecules in this entry. The entry contains 8561 atoms, of which 0 are hydrogens and 0 are deuteriums.

In the tables below, the ZeroOcc column contains the number of atoms modelled with zero occupancy, the AltConf column contains the number of residues with at least one atom in alternate conformation and the Trace column contains the number of residues modelled with at most 2 atoms.

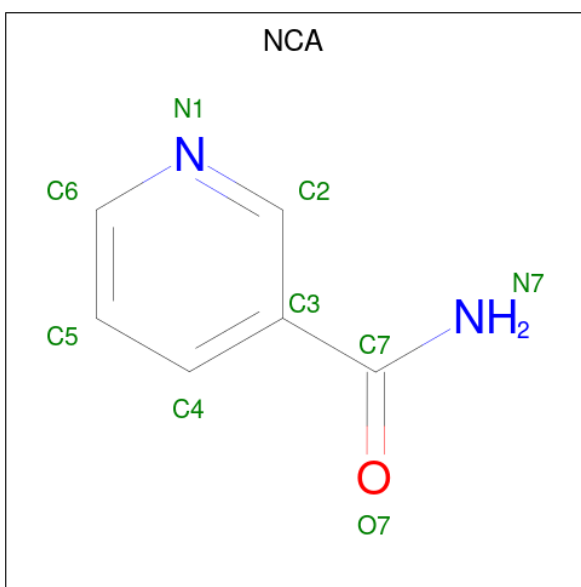
- Molecule 1 is a protein called Nicotinamide phosphoribosyltransferase.

Mol	Chain	Residues	Atoms					ZeroOcc	AltConf	Trace
1	A	468	Total	C	N	O	S	0	3	0
			3743	2411	616	709	7			
1	B	469	Total	C	N	O	S	0	1	0
			3751	2414	619	711	7			

There are 16 discrepancies between the modelled and reference sequences:

Chain	Residue	Modelled	Actual	Comment	Reference
A	492	LEU	-	expression tag	UNP P43490
A	493	GLU	-	expression tag	UNP P43490
A	494	HIS	-	expression tag	UNP P43490
A	495	HIS	-	expression tag	UNP P43490
A	496	HIS	-	expression tag	UNP P43490
A	497	HIS	-	expression tag	UNP P43490
A	498	HIS	-	expression tag	UNP P43490
A	499	HIS	-	expression tag	UNP P43490
B	492	LEU	-	expression tag	UNP P43490
B	493	GLU	-	expression tag	UNP P43490
B	494	HIS	-	expression tag	UNP P43490
B	495	HIS	-	expression tag	UNP P43490
B	496	HIS	-	expression tag	UNP P43490
B	497	HIS	-	expression tag	UNP P43490
B	498	HIS	-	expression tag	UNP P43490
B	499	HIS	-	expression tag	UNP P43490

- Molecule 2 is NICOTINAMIDE (CCD ID: NCA) (formula: C₆H₆N₂O).

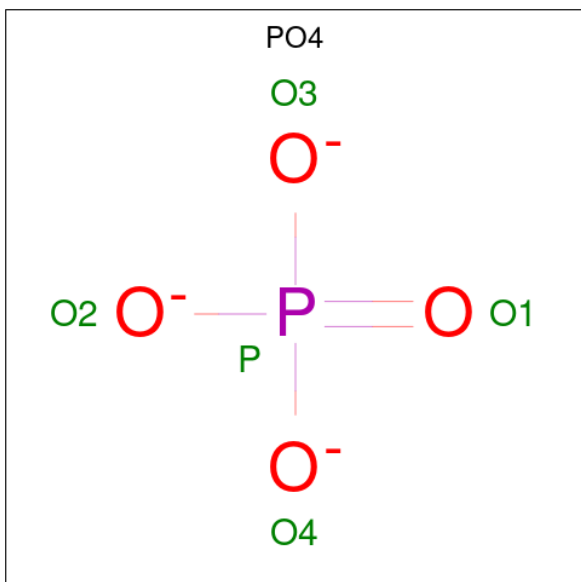


Mol	Chain	Residues	Atoms				ZeroOcc	AltConf
2	A	1	Total	C	N	O	0	0
			9	6	2	1		
2	B	1	Total	C	N	O	0	0
			9	6	2	1		

- Molecule 3 is CHLORIDE ION (CCD ID: CL) (formula: Cl).

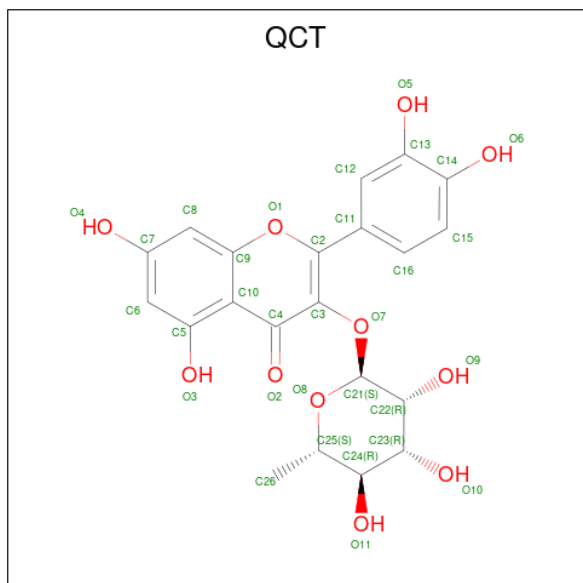
Mol	Chain	Residues	Atoms		ZeroOcc	AltConf
3	A	3	Total	Cl	0	0
			3	3		

- Molecule 4 is PHOSPHATE ION (CCD ID: PO4) (formula: O₄P).



Mol	Chain	Residues	Atoms	ZeroOcc	AltConf
4	A	1	Total O P 5 4 1	0	0
4	B	1	Total O P 5 4 1	0	0

- Molecule 5 is 2-(3,4-dihydroxyphenyl)-5,7-dihydroxy-4-oxo-4H-chromen-3-yl 6-deoxy- α -L-mannopyranoside (CCD ID: QCT) (formula: $C_{21}H_{20}O_{11}$) (labeled as "Ligand of Interest" by depositor).



Mol	Chain	Residues	Atoms	ZeroOcc	AltConf
5	A	1	Total C O 32 21 11	0	1
5	B	1	Total C O 32 21 11	0	1

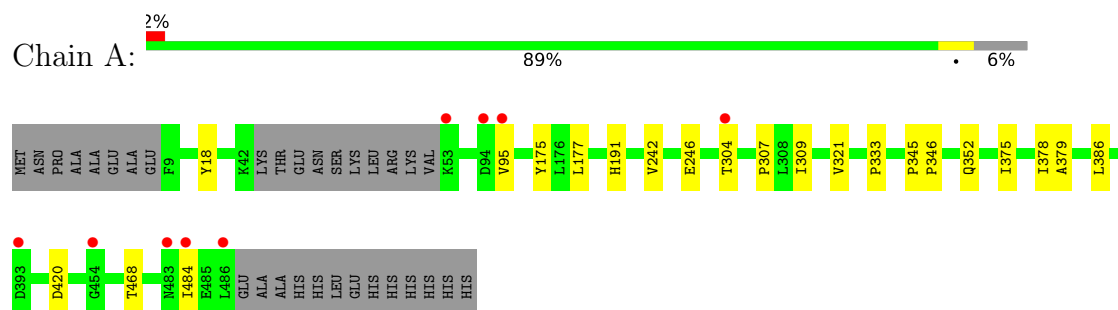
- Molecule 6 is water.

Mol	Chain	Residues	Atoms	ZeroOcc	AltConf
6	A	492	Total O 492 492	0	11
6	B	480	Total O 480 480	0	9

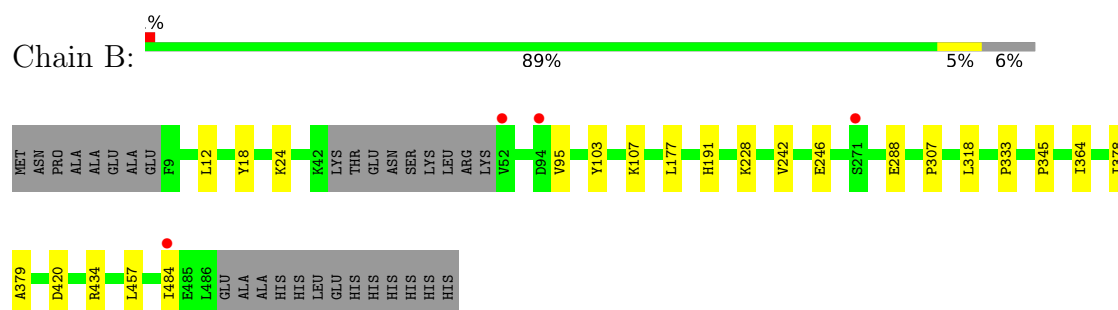
3 Residue-property plots [i](#)

These plots are drawn for all protein, RNA, DNA and oligosaccharide chains in the entry. The first graphic for a chain summarises the proportions of the various outlier classes displayed in the second graphic. The second graphic shows the sequence view annotated by issues in geometry and electron density. Residues are color-coded according to the number of geometric quality criteria for which they contain at least one outlier: green = 0, yellow = 1, orange = 2 and red = 3 or more. A red dot above a residue indicates a poor fit to the electron density ($RSRZ > 2$). Stretches of 2 or more consecutive residues without any outlier are shown as a green connector. Residues present in the sample, but not in the model, are shown in grey.

- Molecule 1: Nicotinamide phosphoribosyltransferase



- Molecule 1: Nicotinamide phosphoribosyltransferase



4 Data and refinement statistics

Property	Value	Source
Space group	P 1 21 1	Depositor
Cell constants a, b, c, α , β , γ	60.87Å 106.79Å 82.69Å 90.00° 96.61° 90.00°	Depositor
Resolution (Å)	19.86 – 1.43 19.86 – 1.43	Depositor EDS
% Data completeness (in resolution range)	98.5 (19.86-1.43) 98.5 (19.86-1.43)	Depositor EDS
R_{merge}	0.08	Depositor
R_{sym}	(Not available)	Depositor
$\langle I/\sigma(I) \rangle$ ¹	1.32 (at 1.43Å)	Xtriage
Refinement program	PHENIX 1.16_3549	Depositor
R, R_{free}	0.165 , 0.183 0.165 , 0.183	Depositor DCC
R_{free} test set	9588 reflections (4.94%)	wwPDB-VP
Wilson B-factor (Å ²)	14.5	Xtriage
Anisotropy	0.328	Xtriage
Bulk solvent k_{sol} (e/Å ³), B_{sol} (Å ²)	0.39 , 39.2	EDS
L-test for twinning ²	$\langle L \rangle = 0.50$, $\langle L^2 \rangle = 0.33$	Xtriage
Estimated twinning fraction	No twinning to report.	Xtriage
F_o, F_c correlation	0.97	EDS
Total number of atoms	8561	wwPDB-VP
Average B, all atoms (Å ²)	18.0	wwPDB-VP

Xtriage's analysis on translational NCS is as follows: *The largest off-origin peak in the Patterson function is 4.30% of the height of the origin peak. No significant pseudotranslation is detected.*

¹Intensities estimated from amplitudes.

²Theoretical values of $\langle |L| \rangle$, $\langle L^2 \rangle$ for acentric reflections are 0.5, 0.333 respectively for untwinned datasets, and 0.375, 0.2 for perfectly twinned datasets.

5 Model quality [i](#)

5.1 Standard geometry [i](#)

Bond lengths and bond angles in the following residue types are not validated in this section: CL, PO4, NCA, QCT

The Z score for a bond length (or angle) is the number of standard deviations the observed value is removed from the expected value. A bond length (or angle) with $|Z| > 5$ is considered an outlier worth inspection. RMSZ is the root-mean-square of all Z scores of the bond lengths (or angles).

Mol	Chain	Bond lengths		Bond angles	
		RMSZ	# Z >5	RMSZ	# Z >5
1	A	0.29	0/3840	0.57	4/5207 (0.1%)
1	B	0.27	0/3842	0.56	3/5208 (0.1%)
All	All	0.28	0/7682	0.57	7/10415 (0.1%)

There are no bond length outliers.

All (7) bond angle outliers are listed below:

Mol	Chain	Res	Type	Atoms	Z	Observed(°)	Ideal(°)
1	A	468	THR	N-CA-C	8.02	120.10	111.36
1	A	420	ASP	CA-C-N	6.46	126.39	119.28
1	A	420	ASP	C-N-CA	6.46	126.39	119.28
1	B	420	ASP	CA-C-N	6.07	125.95	119.28
1	B	420	ASP	C-N-CA	6.07	125.95	119.28
1	A	386	LEU	N-CA-C	5.91	117.80	111.36
1	B	288	GLU	N-CA-C	5.90	117.51	111.14

There are no chirality outliers.

There are no planarity outliers.

5.2 Too-close contacts [i](#)

In the following table, the Non-H and H(model) columns list the number of non-hydrogen atoms and hydrogen atoms in the chain respectively. The H(added) column lists the number of hydrogen atoms added and optimized by MolProbity. The Clashes column lists the number of clashes within the asymmetric unit, whereas Symm-Clashes lists symmetry-related clashes.

Mol	Chain	Non-H	H(model)	H(added)	Clashes	Symm-Clashes
1	A	3743	0	3711	15	0
1	B	3751	0	3724	20	0

Continued on next page...

Continued from previous page...

Mol	Chain	Non-H	H(model)	H(added)	Clashes	Symm-Clashes
2	A	9	0	6	0	0
2	B	9	0	6	0	0
3	A	3	0	0	0	0
4	A	5	0	0	0	0
4	B	5	0	0	0	0
5	A	32	0	14	6	0
5	B	32	0	15	9	0
6	A	492	0	0	0	0
6	B	480	0	0	0	0
All	All	8561	0	7476	33	0

The all-atom clashscore is defined as the number of clashes found per 1000 atoms (including hydrogen atoms). The all-atom clashscore for this structure is 2.

All (33) close contacts within the same asymmetric unit are listed below, sorted by their clash magnitude.

Atom-1	Atom-2	Interatomic distance (Å)	Clash overlap (Å)
1:B:307:PRO:CG	5:B:1103[D]:QCT:H261	2.08	0.82
1:B:307:PRO:HG2	5:B:1103[D]:QCT:H261	1.64	0.79
1:A:177:LEU:HD22	1:A:484:ILE:HD11	1.66	0.78
1:A:304:THR:HG22	1:A:346:PRO:HB2	1.79	0.63
1:B:307:PRO:HG2	5:B:1103[D]:QCT:C26	2.29	0.62
1:B:307:PRO:CG	5:B:1103[D]:QCT:C26	2.79	0.60
1:A:307:PRO:HG2	5:A:1005[D]:QCT:C26	2.32	0.60
1:B:307:PRO:HG3	5:B:1103[D]:QCT:H261	1.86	0.57
1:A:309:ILE:HD11	5:A:1005[D]:QCT:H262	1.86	0.57
1:A:307:PRO:CG	5:A:1005[D]:QCT:C26	2.85	0.55
1:B:333:PRO:O	1:B:345:PRO:HD3	2.07	0.54
1:B:177:LEU:HD22	1:B:484:ILE:HD11	1.90	0.52
1:B:191:HIS:CE1	5:B:1103[D]:QCT:C6	2.92	0.51
1:A:307:PRO:CG	5:A:1005[D]:QCT:H261	2.41	0.51
1:B:307:PRO:HG3	5:B:1103[D]:QCT:C26	2.41	0.50
1:A:333:PRO:O	1:A:345:PRO:HD3	2.15	0.47
1:A:18:TYR:CE2	1:B:246:GLU:HB3	2.51	0.46
1:A:95:VAL:O	1:A:95:VAL:HG22	2.16	0.46
1:A:191:HIS:CE1	5:A:1005[D]:QCT:C6	2.99	0.45
1:B:24:LYS:HE3	1:B:95:VAL:HG23	1.98	0.45
1:A:246:GLU:HB3	1:B:18:TYR:CE2	2.52	0.45
1:B:103:TYR:CZ	1:B:107:LYS:HD2	2.51	0.45
1:A:242:VAL:HG22	5:A:1005[D]:QCT:C6	2.47	0.44
1:A:175:TYR:HB3	1:A:375:ILE:HG13	2.00	0.43

Continued on next page...

Continued from previous page...

Atom-1	Atom-2	Interatomic distance (Å)	Clash overlap (Å)
1:B:242:VAL:HG22	5:B:1103[D]:QCT:C6	2.49	0.43
1:B:378:ILE:HG13	1:B:379:ALA:N	2.33	0.42
1:A:321:VAL:HG23	1:A:352:GLN:HE21	1.84	0.42
1:B:12:LEU:HD12	1:B:12:LEU:N	2.35	0.42
1:B:434:ARG:HG2	1:B:457:LEU:HD11	2.02	0.41
1:B:228:LYS:HB3	1:B:228:LYS:HE3	1.88	0.41
1:B:318:LEU:HD13	1:B:364:ILE:HA	2.03	0.41
1:A:378:ILE:HG13	1:A:379:ALA:N	2.35	0.41
1:B:191:HIS:CE1	5:B:1103[D]:QCT:C5	3.04	0.40

There are no symmetry-related clashes.

5.3 Torsion angles [i](#)

5.3.1 Protein backbone [i](#)

In the following table, the Percentiles column shows the percent Ramachandran outliers of the chain as a percentile score with respect to all X-ray entries followed by that with respect to entries of similar resolution.

The Analysed column shows the number of residues for which the backbone conformation was analysed, and the total number of residues.

Mol	Chain	Analysed	Favoured	Allowed	Outliers	Percentiles	
1	A	467/499 (94%)	457 (98%)	10 (2%)	0	100	100
1	B	466/499 (93%)	458 (98%)	8 (2%)	0	100	100
All	All	933/998 (94%)	915 (98%)	18 (2%)	0	100	100

There are no Ramachandran outliers to report.

5.3.2 Protein sidechains [i](#)

In the following table, the Percentiles column shows the percent sidechain outliers of the chain as a percentile score with respect to all X-ray entries followed by that with respect to entries of similar resolution.

The Analysed column shows the number of residues for which the sidechain conformation was analysed, and the total number of residues.

Mol	Chain	Analysed	Rotameric	Outliers	Percentiles	
1	A	410/438 (94%)	410 (100%)	0	100	100
1	B	412/438 (94%)	412 (100%)	0	100	100
All	All	822/876 (94%)	822 (100%)	0	100	100

There are no protein residues with a non-rotameric sidechain to report.

Sometimes sidechains can be flipped to improve hydrogen bonding and reduce clashes. All (9) such sidechains are listed below:

Mol	Chain	Res	Type
1	A	214	ASN
1	A	305	GLN
1	A	359	ASN
1	A	370	GLN
1	A	412	ASN
1	A	481	GLN
1	B	111	HIS
1	B	285	ASN
1	B	481	GLN

5.3.3 RNA [i](#)

There are no RNA molecules in this entry.

5.4 Non-standard residues in protein, DNA, RNA chains [i](#)

There are no non-standard protein/DNA/RNA residues in this entry.

5.5 Carbohydrates [i](#)

There are no oligosaccharides in this entry.

5.6 Ligand geometry [i](#)

Of 9 ligands modelled in this entry, 3 are monoatomic - leaving 6 for Mogul analysis.

In the following table, the Counts columns list the number of bonds (or angles) for which Mogul statistics could be retrieved, the number of bonds (or angles) that are observed in the model and the number of bonds (or angles) that are defined in the Chemical Component Dictionary. The Link column lists molecule types, if any, to which the group is linked. The Z score for a bond length (or angle) is the number of standard deviations the observed value is removed from the

expected value. A bond length (or angle) with $|Z| > 2$ is considered an outlier worth inspection. RMSZ is the root-mean-square of all Z scores of the bond lengths (or angles).

Mol	Type	Chain	Res	Link	Bond lengths			Bond angles		
					Counts	RMSZ	$\# Z > 2$	Counts	RMSZ	$\# Z > 2$
5	QCT	A	1005[D]	-	35,35,35	1.71	9 (25%)	53,53,53	2.62	23 (43%)
2	NCA	B	1101	-	9,9,9	2.29	2 (22%)	11,11,11	1.57	3 (27%)
5	QCT	B	1103[D]	-	35,35,35	2.22	12 (34%)	53,53,53	2.55	21 (39%)
4	PO4	B	1102	-	4,4,4	0.91	0	6,6,6	0.61	0
2	NCA	A	1001	-	9,9,9	2.37	2 (22%)	11,11,11	1.53	3 (27%)
4	PO4	A	1003	-	4,4,4	0.83	0	6,6,6	0.27	0

In the following table, the Chirals column lists the number of chiral outliers, the number of chiral centers analysed, the number of these observed in the model and the number defined in the Chemical Component Dictionary. Similar counts are reported in the Torsion and Rings columns. '-' means no outliers of that kind were identified.

Mol	Type	Chain	Res	Link	Chirals	Torsions	Rings
2	NCA	A	1001	-	-	0/4/4/4	0/1/1/1
2	NCA	B	1101	-	-	0/4/4/4	0/1/1/1
5	QCT	A	1005[D]	-	-	1/8/28/28	0/4/4/4
5	QCT	B	1103[D]	-	-	0/8/28/28	0/4/4/4

All (25) bond length outliers are listed below:

Mol	Chain	Res	Type	Atoms	Z	Observed(Å)	Ideal(Å)
2	A	1001	NCA	C7-N7	6.04	1.44	1.33
2	B	1101	NCA	C7-N7	6.03	1.44	1.33
5	B	1103[D]	QCT	C26-C25	5.22	1.64	1.51
5	B	1103[D]	QCT	O10-C23	-4.52	1.31	1.43
5	B	1103[D]	QCT	O3-C5	-4.43	1.27	1.36
5	B	1103[D]	QCT	O11-C24	-4.03	1.33	1.43
5	A	1005[D]	QCT	C14-C13	3.89	1.46	1.40
5	B	1103[D]	QCT	C16-C15	-3.86	1.32	1.38
5	B	1103[D]	QCT	O6-C14	-3.36	1.29	1.36
5	A	1005[D]	QCT	C26-C25	3.19	1.59	1.51
5	A	1005[D]	QCT	O9-C22	-3.03	1.35	1.43
5	B	1103[D]	QCT	C3-C4	2.96	1.56	1.47
5	A	1005[D]	QCT	O11-C24	-2.70	1.36	1.43
5	A	1005[D]	QCT	O10-C23	-2.61	1.36	1.43
5	B	1103[D]	QCT	O8-C21	-2.46	1.35	1.41
5	A	1005[D]	QCT	C22-C23	2.33	1.58	1.52
5	A	1005[D]	QCT	C3-C2	-2.32	1.32	1.37
2	A	1001	NCA	O7-C7	-2.31	1.19	1.24

Continued on next page...

Continued from previous page...

Mol	Chain	Res	Type	Atoms	Z	Observed(Å)	Ideal(Å)
5	B	1103[D]	QCT	C3-C2	-2.28	1.32	1.37
5	A	1005[D]	QCT	O3-C5	-2.24	1.31	1.36
5	A	1005[D]	QCT	C8-C9	2.22	1.42	1.38
5	B	1103[D]	QCT	O2-C4	-2.20	1.18	1.23
5	B	1103[D]	QCT	C8-C9	2.18	1.42	1.38
2	B	1101	NCA	O7-C7	-2.06	1.20	1.24
5	B	1103[D]	QCT	O5-C13	-2.03	1.32	1.36

All (50) bond angle outliers are listed below:

Mol	Chain	Res	Type	Atoms	Z	Observed(°)	Ideal(°)
5	A	1005[D]	QCT	C11-C12-C13	7.54	126.67	120.09
5	B	1103[D]	QCT	C11-C12-C13	7.02	126.22	120.09
5	A	1005[D]	QCT	C16-C11-C12	-5.25	113.17	119.25
5	A	1005[D]	QCT	C15-C14-C13	-5.09	114.23	119.66
5	B	1103[D]	QCT	C21-O8-C25	5.00	122.16	113.63
5	B	1103[D]	QCT	C15-C14-C13	-4.94	114.39	119.66
5	B	1103[D]	QCT	O1-C9-C8	4.85	122.70	115.83
5	A	1005[D]	QCT	O1-C9-C8	4.84	122.69	115.83
5	B	1103[D]	QCT	O8-C25-C26	4.82	117.42	106.74
5	A	1005[D]	QCT	C12-C11-C2	4.80	127.43	120.65
5	B	1103[D]	QCT	C12-C11-C2	4.76	127.38	120.65
5	B	1103[D]	QCT	C16-C11-C12	-4.57	113.96	119.25
5	B	1103[D]	QCT	C16-C15-C14	4.26	124.76	120.50
5	A	1005[D]	QCT	C21-O8-C25	4.18	120.76	113.63
5	A	1005[D]	QCT	C21-O7-C3	4.07	124.81	115.60
5	A	1005[D]	QCT	C5-C10-C9	3.99	121.22	117.41
5	A	1005[D]	QCT	O7-C3-C4	-3.93	114.64	118.24
5	A	1005[D]	QCT	O8-C25-C26	3.68	114.91	106.74
5	B	1103[D]	QCT	O7-C3-C4	-3.65	114.90	118.24
5	A	1005[D]	QCT	C9-O1-C2	3.58	126.15	120.67
5	B	1103[D]	QCT	O7-C3-C2	3.53	124.31	119.80
5	A	1005[D]	QCT	C16-C15-C14	3.52	124.02	120.50
5	A	1005[D]	QCT	O7-C3-C2	3.45	124.21	119.80
5	B	1103[D]	QCT	C5-C10-C9	3.44	120.69	117.41
5	A	1005[D]	QCT	O1-C2-C11	3.43	115.68	110.87
5	B	1103[D]	QCT	C9-O1-C2	3.10	125.42	120.67
5	B	1103[D]	QCT	O1-C2-C11	3.00	115.07	110.87
5	A	1005[D]	QCT	C24-C23-C22	2.97	116.04	110.83
5	B	1103[D]	QCT	O7-C21-C22	2.95	116.05	107.49
2	B	1101	NCA	C3-C2-N1	-2.89	119.21	123.50
2	A	1001	NCA	C3-C2-N1	-2.69	119.50	123.50

Continued on next page...

Continued from previous page...

Mol	Chain	Res	Type	Atoms	Z	Observed(°)	Ideal(°)
2	B	1101	NCA	C4-C3-C2	2.61	120.52	117.61
5	B	1103[D]	QCT	C11-C2-C3	-2.57	125.19	128.52
5	A	1005[D]	QCT	C26-C25-C24	-2.53	108.45	113.08
2	A	1001	NCA	C4-C3-C2	2.50	120.40	117.61
5	A	1005[D]	QCT	C15-C16-C11	2.50	123.47	120.80
2	B	1101	NCA	C6-N1-C2	2.46	121.17	116.85
5	B	1103[D]	QCT	C8-C9-C10	-2.42	117.57	121.79
2	A	1001	NCA	C6-N1-C2	2.27	120.83	116.85
5	B	1103[D]	QCT	C21-O7-C3	2.21	120.59	115.60
5	A	1005[D]	QCT	C6-C5-C10	-2.18	118.48	120.92
5	A	1005[D]	QCT	C5-C6-C7	2.16	121.67	119.67
5	B	1103[D]	QCT	O6-C14-C15	2.15	125.12	119.36
5	B	1103[D]	QCT	O10-C23-C24	-2.13	105.36	110.38
5	A	1005[D]	QCT	C8-C9-C10	-2.11	118.12	121.79
5	A	1005[D]	QCT	C11-C2-C3	-2.10	125.80	128.52
5	A	1005[D]	QCT	O6-C14-C15	2.06	124.89	119.36
5	A	1005[D]	QCT	O1-C9-C10	-2.04	119.19	121.19
5	B	1103[D]	QCT	C12-C13-C14	-2.02	118.01	119.89
5	B	1103[D]	QCT	C9-C8-C7	2.02	122.17	118.98

There are no chirality outliers.

All (1) torsion outliers are listed below:

Mol	Chain	Res	Type	Atoms
5	A	1005[D]	QCT	O8-C21-O7-C3

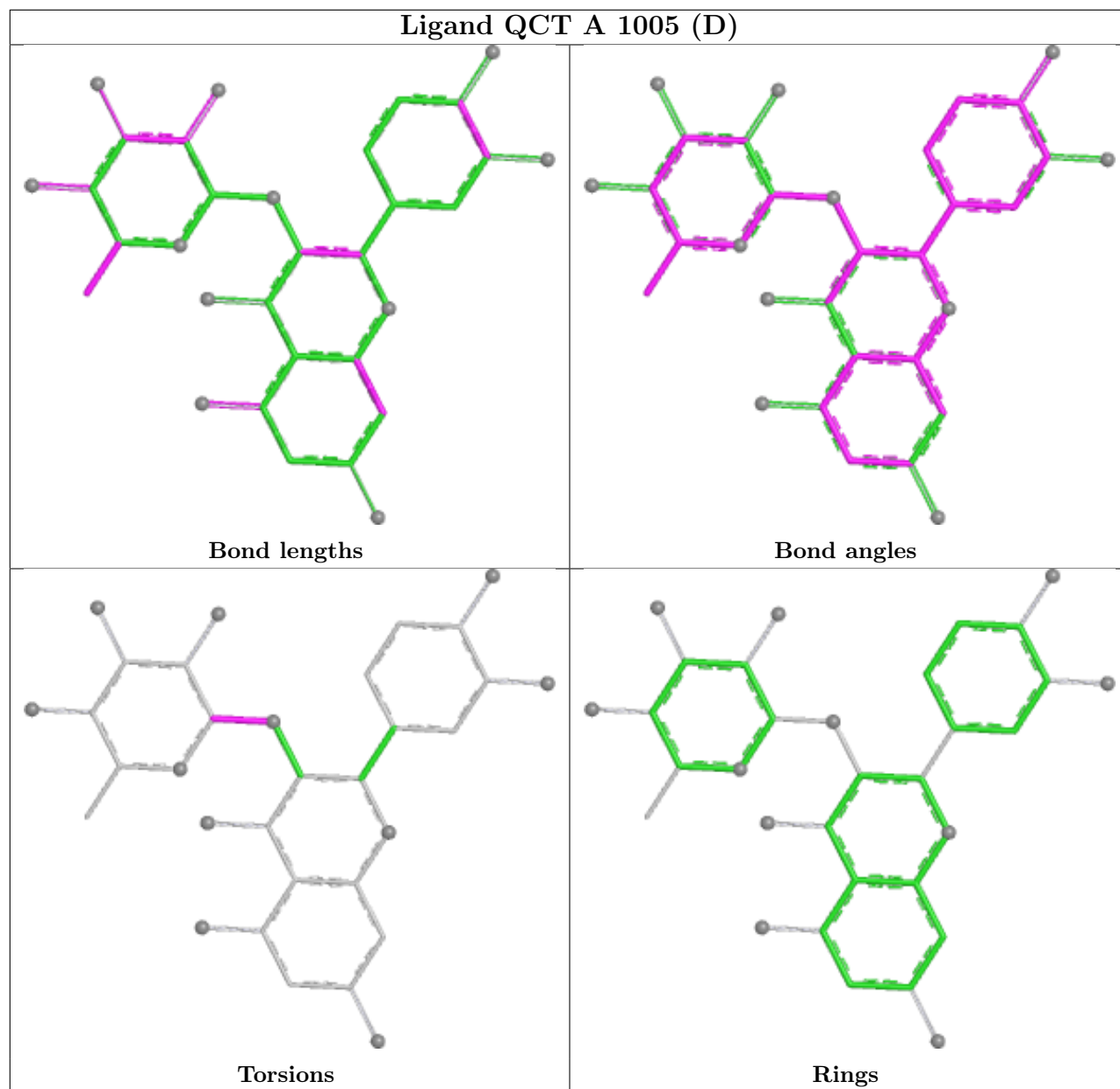
There are no ring outliers.

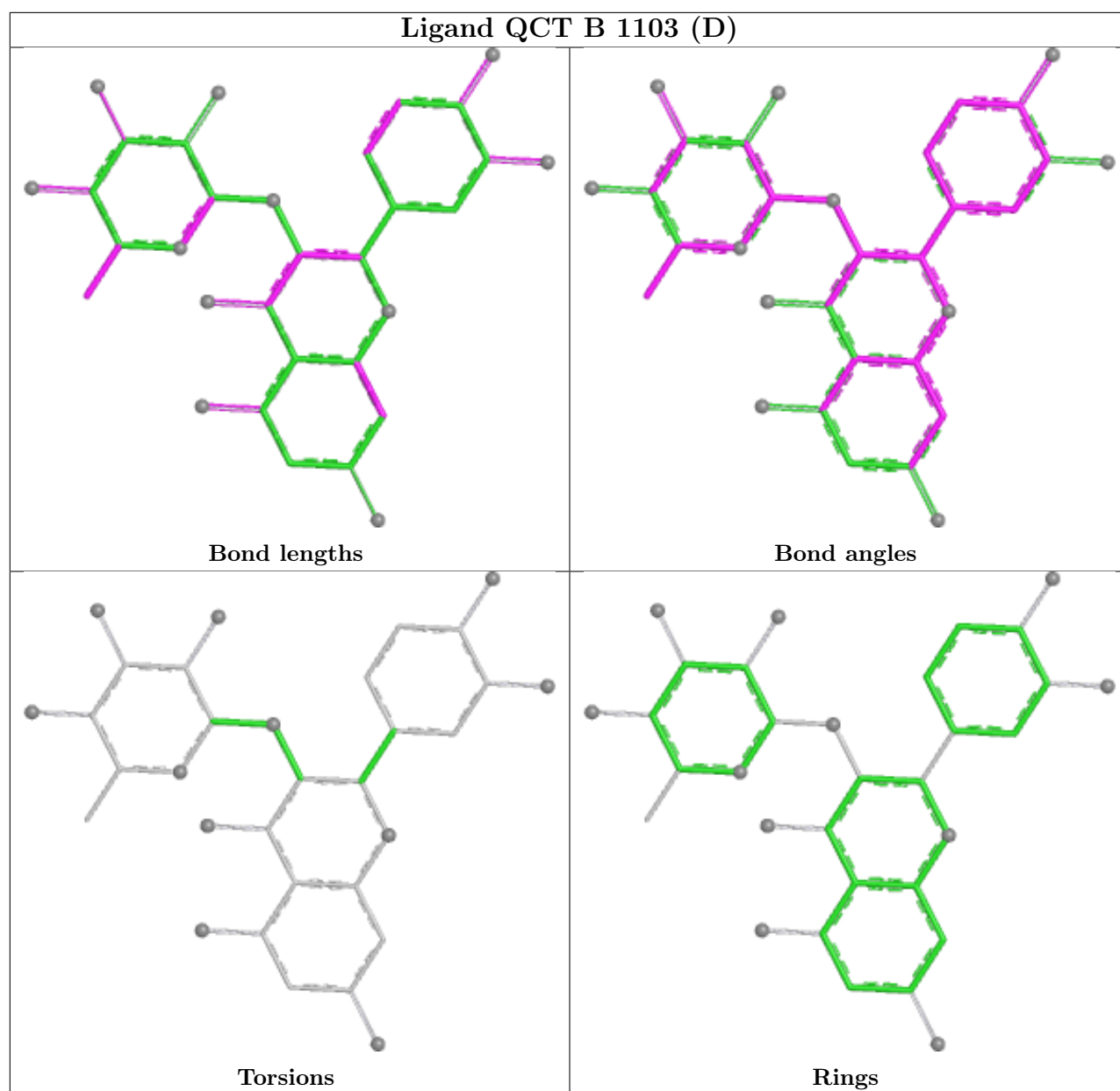
2 monomers are involved in 15 short contacts:

Mol	Chain	Res	Type	Clashes	Symm-Clashes
5	A	1005[D]	QCT	6	0
5	B	1103[D]	QCT	9	0

The following is a two-dimensional graphical depiction of Mogul quality analysis of bond lengths, bond angles, torsion angles, and ring geometry for all instances of the Ligand of Interest. In addition, ligands with molecular weight > 250 and outliers as shown on the validation Tables will also be included. For torsion angles, if less than 5% of the Mogul distribution of torsion angles is within 10 degrees of the torsion angle in question, then that torsion angle is considered an outlier. Any bond that is central to one or more torsion angles identified as an outlier by Mogul will be highlighted in the graph. For rings, the root-mean-square deviation (RMSD) between the ring in question and similar rings identified by Mogul is calculated over all ring torsion angles. If the average RMSD is greater than 60 degrees and the minimal RMSD between the ring in question and

any Mogul-identified rings is also greater than 60 degrees, then that ring is considered an outlier. The outliers are highlighted in purple. The color gray indicates Mogul did not find sufficient equivalents in the CSD to analyse the geometry.





5.7 Other polymers [i](#)

There are no such residues in this entry.

5.8 Polymer linkage issues [i](#)

There are no chain breaks in this entry.

6 Fit of model and data [i](#)

6.1 Protein, DNA and RNA chains [i](#)

In the following table, the column labelled ‘#RSRZ > 2’ contains the number (and percentage) of RSRZ outliers, followed by percent RSRZ outliers for the chain as percentile scores relative to all X-ray entries and entries of similar resolution. The OWAB column contains the minimum, median, 95th percentile and maximum values of the occupancy-weighted average B-factor per residue. The column labelled ‘Q < 0.9’ lists the number of (and percentage) of residues with an average occupancy less than 0.9.

Mol	Chain	Analysed	<RSRZ>	#RSRZ>2	OWAB(Å ²)	Q<0.9
1	A	468/499 (93%)	-0.19	9 (1%) 66 70	8, 16, 27, 43	3 (0%)
1	B	469/499 (93%)	-0.22	4 (0%) 81 84	7, 15, 28, 40	1 (0%)
All	All	937/998 (93%)	-0.21	13 (1%) 73 77	7, 16, 28, 43	4 (0%)

All (13) RSRZ outliers are listed below:

Mol	Chain	Res	Type	RSRZ
1	A	486	LEU	3.9
1	B	52	VAL	3.4
1	A	94	ASP	3.3
1	A	484	ILE	2.9
1	B	94	ASP	2.9
1	A	304	THR	2.8
1	B	484	ILE	2.6
1	B	271	SER	2.3
1	A	53	LYS	2.3
1	A	483	ASN	2.3
1	A	454	GLY	2.1
1	A	393	ASP	2.1
1	A	95	VAL	2.0

6.2 Non-standard residues in protein, DNA, RNA chains [i](#)

There are no non-standard protein/DNA/RNA residues in this entry.

6.3 Carbohydrates [i](#)

There are no oligosaccharides in this entry.

6.4 Ligands

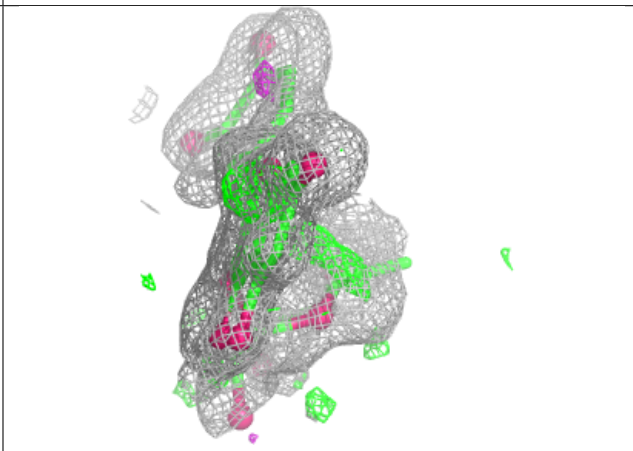
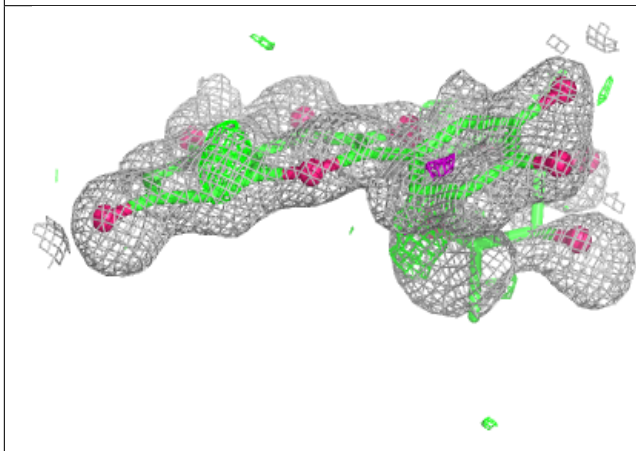
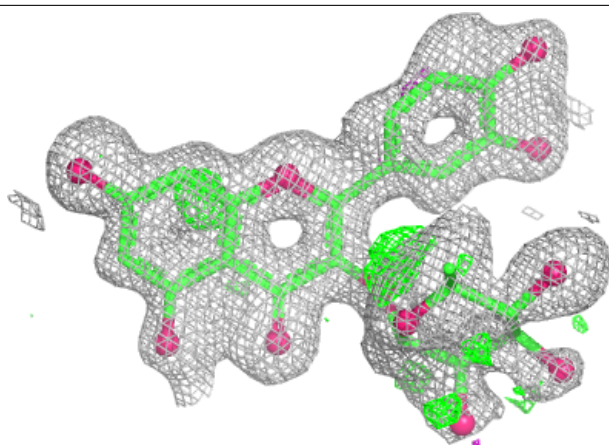
In the following table, the Atoms column lists the number of modelled atoms in the group and the number defined in the chemical component dictionary. The B-factors column lists the minimum, median, 95th percentile and maximum values of B factors of atoms in the group. The column labelled 'Q< 0.9' lists the number of atoms with occupancy less than 0.9.

Mol	Type	Chain	Res	Atoms	RSCC	RSR	B-factors(Å ²)	Q<0.9
5	QCT	A	1005[D]	32/32	0.85	0.12	14,19,31,34	32
5	QCT	B	1103[D]	32/32	0.85	0.11	15,19,29,30	32
3	CL	A	1002	1/1	0.94	0.09	32,32,32,32	1
4	PO4	A	1003	5/5	0.96	0.09	18,22,25,27	5
4	PO4	B	1102	5/5	0.96	0.09	20,23,25,29	5
2	NCA	A	1001	9/9	0.97	0.05	11,12,12,13	0
2	NCA	B	1101	9/9	0.98	0.04	11,12,13,13	0
3	CL	A	1004	1/1	0.99	0.04	15,15,15,15	1
3	CL	A	1006	1/1	0.99	0.03	14,14,14,14	1

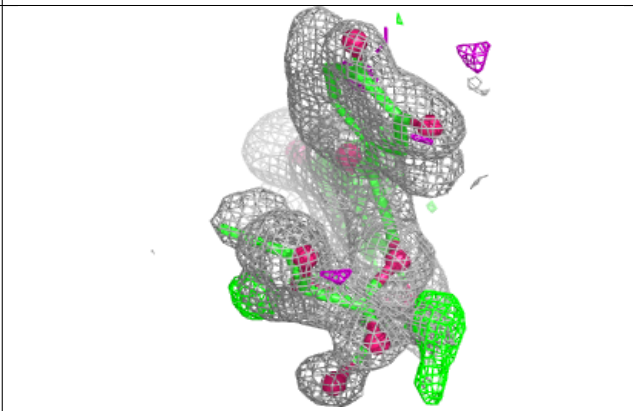
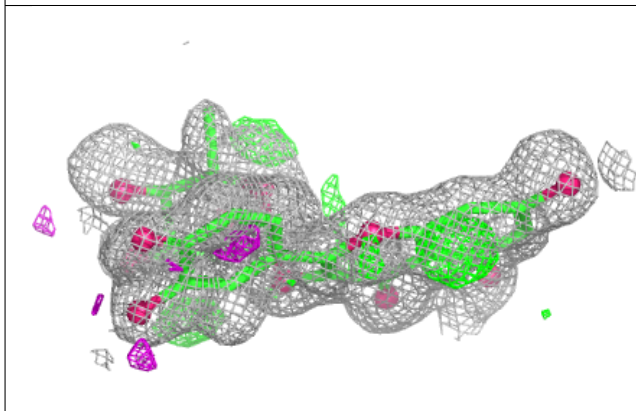
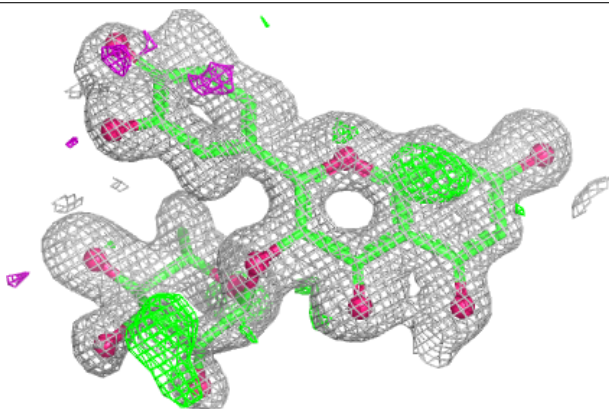
The following is a graphical depiction of the model fit to experimental electron density of all instances of the Ligand of Interest. In addition, ligands with molecular weight > 250 and outliers as shown on the geometry validation Tables will also be included. Each fit is shown from different orientation to approximate a three-dimensional view.

Electron density around QCT A 1005 (D):

$2mF_o-DF_c$ (at 0.7 rmsd) in gray
 mF_o-DF_c (at 3 rmsd) in purple (negative)
and green (positive)

**Electron density around QCT B 1103 (D):**

$2mF_o-DF_c$ (at 0.7 rmsd) in gray
 mF_o-DF_c (at 3 rmsd) in purple (negative)
and green (positive)



6.5 Other polymers [i](#)

There are no such residues in this entry.