



Full wwPDB X-ray Structure Validation Report ⓘ

Mar 9, 2026 – 04:04 PM UTC

PDB ID : 8GFC / pdb_00008gfc
Title : Crystal structure of soluble lytic transglycosylase Cj0843 of *Campylobacter jejuni* in complex with Fv17b inhibitor
Authors : van den Akker, F.; Kumar, V.
Deposited on : 2023-03-08
Resolution : 2.48 Å(reported)

This is a Full wwPDB X-ray Structure Validation Report for a publicly released PDB entry.

We welcome your comments at validation@mail.wwpdb.org

A user guide is available at

<https://www.wwpdb.org/validation/2017/XrayValidationReportHelp>

with specific help available everywhere you see the ⓘ symbol.

The types of validation reports are described at

<http://www.wwpdb.org/validation/2017/FAQs#types>.

The following versions of software and data (see [references ⓘ](#)) were used in the production of this report:

MolProbity	:	4-5-2 with Phenix2.0
Mogul	:	2022.3.0, CSD as543be (2022)
Xtriage (Phenix)	:	2.0
EDS	:	3.0
Buster-report	:	wwPDB partial adaption of 1.1.7 (2018)
Percentile statistics	:	20250101.v01 (using entries in the PDB archive January 1st 2025)
CCP4	:	9.0.010 (Gargrove)
Density-Fitness	:	1.0.12
Ideal geometry (proteins)	:	Engh & Huber (2001)
Ideal geometry (DNA, RNA)	:	Parkinson et al. (1996)
Validation Pipeline (wwPDB-VP)	:	2.49

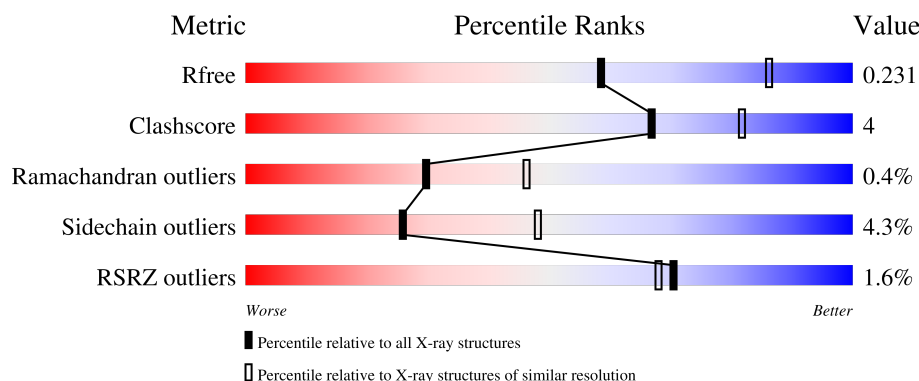
1 Overall quality at a glance

The following experimental techniques were used to determine the structure:

X-RAY DIFFRACTION


The reported resolution of this entry is 2.48 Å.

Percentile scores (ranging between 0-100) for global validation metrics of the entry are shown in the following graphic. The table shows the number of entries on which the scores are based.



Metric	Whole archive (#Entries)	Similar resolution (#Entries, resolution range(Å))
R_{free}	180053	7589 (2.50-2.46)
Clashscore	190562	8295 (2.50-2.46)
Ramachandran outliers	187476	8164 (2.50-2.46)
Sidechain outliers	187428	8166 (2.50-2.46)
RSRZ outliers	180081	7593 (2.50-2.46)

The table below summarises the geometric issues observed across the polymeric chains and their fit to the electron density. The red, orange, yellow and green segments of the lower bar indicate the fraction of residues that contain outliers for ≥ 3 , 2, 1 and 0 types of geometric quality criteria respectively. A grey segment represents the fraction of residues that are not modelled. The numeric value for each fraction is indicated below the corresponding segment, with a dot representing fractions $\leq 5\%$. The upper red bar (where present) indicates the fraction of residues that have poor fit to the electron density. The numeric value is given above the bar.

Mol	Chain	Length	Quality of chain
1	A	544	

2 Entry composition

There are 5 unique types of molecules in this entry. The entry contains 4400 atoms, of which 0 are hydrogens and 0 are deuteriums.

In the tables below, the ZeroOcc column contains the number of atoms modelled with zero occupancy, the AltConf column contains the number of residues with at least one atom in alternate conformation and the Trace column contains the number of residues modelled with at most 2 atoms.

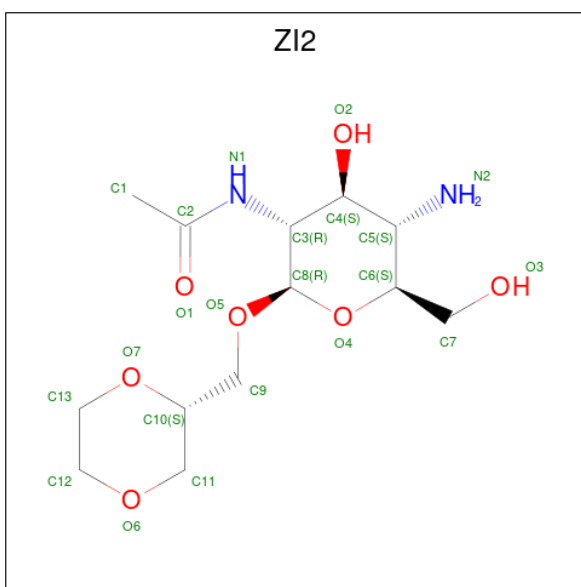
- Molecule 1 is a protein called Lytic transglycosylase domain-containing protein.

Mol	Chain	Residues	Atoms					ZeroOcc	AltConf	Trace
			Total	C	N	O	S			
1	A	513	4251	2756	699	782	14	0	0	0

There are 21 discrepancies between the modelled and reference sequences:

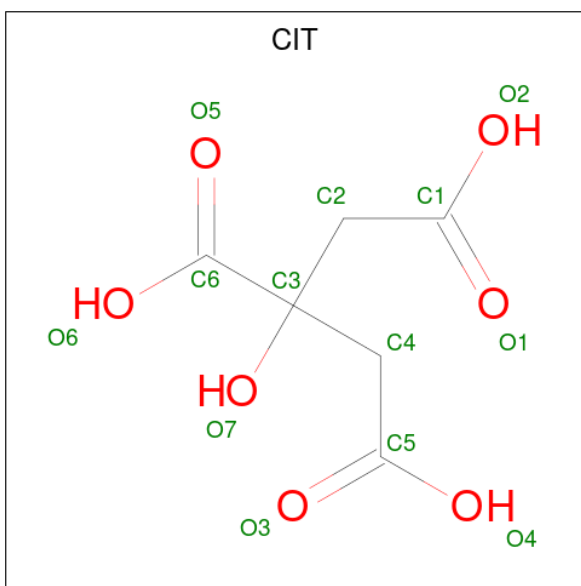
Chain	Residue	Modelled	Actual	Comment	Reference
A	-2	MET	-	expression tag	UNP A0A3I4HTM2
A	-1	GLY	-	expression tag	UNP A0A3I4HTM2
A	0	SER	-	expression tag	UNP A0A3I4HTM2
A	1	SER	-	expression tag	UNP A0A3I4HTM2
A	2	HIS	-	expression tag	UNP A0A3I4HTM2
A	3	HIS	-	expression tag	UNP A0A3I4HTM2
A	4	HIS	-	expression tag	UNP A0A3I4HTM2
A	5	HIS	-	expression tag	UNP A0A3I4HTM2
A	6	HIS	-	expression tag	UNP A0A3I4HTM2
A	7	HIS	-	expression tag	UNP A0A3I4HTM2
A	8	SER	-	expression tag	UNP A0A3I4HTM2
A	9	SER	-	expression tag	UNP A0A3I4HTM2
A	10	GLY	-	expression tag	UNP A0A3I4HTM2
A	11	LEU	-	expression tag	UNP A0A3I4HTM2
A	12	VAL	-	expression tag	UNP A0A3I4HTM2
A	13	PRO	-	expression tag	UNP A0A3I4HTM2
A	14	ARG	-	expression tag	UNP A0A3I4HTM2
A	15	GLY	-	expression tag	UNP A0A3I4HTM2
A	16	SER	-	expression tag	UNP A0A3I4HTM2
A	17	HIS	-	expression tag	UNP A0A3I4HTM2
A	18	MET	-	expression tag	UNP A0A3I4HTM2

- Molecule 2 is [(2S)-1,4-dioxan-2-yl]methyl 2-acetamido-4-amino-2,4-dideoxy-beta-D-glucopyranoside (CCD ID: ZI2) (formula: C₁₃H₂₄N₂O₇) (labeled as "Ligand of Interest" by depositor).



Mol	Chain	Residues	Atoms				ZeroOcc	AltConf
2	A	1	Total	C	N	O	0	0
			22	13	2	7		

- Molecule 3 is CITRIC ACID (CCD ID: CIT) (formula: $C_6H_8O_7$).



Mol	Chain	Residues	Atoms			ZeroOcc	AltConf
3	A	1	Total	C	O	0	0
			13	6	7		

- Molecule 4 is DIMETHYL SULFOXIDE (CCD ID: DMS) (formula: C_2H_6OS).



Mol	Chain	Residues	Atoms				ZeroOcc	AltConf
4	A	1	Total	C	O	S	0	0
			4	2	1	1		
4	A	1	Total	C	O	S	0	0
			4	2	1	1		

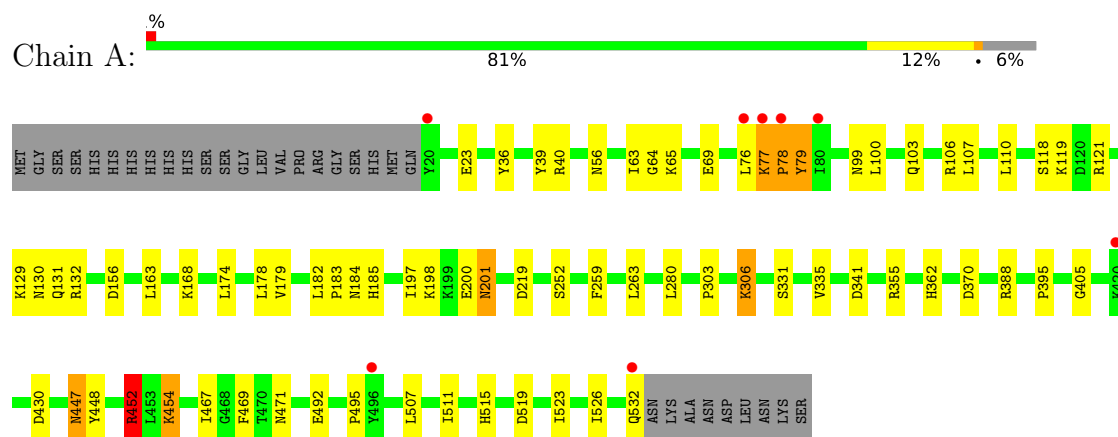
- Molecule 5 is water.

Mol	Chain	Residues	Atoms		ZeroOcc	AltConf
5	A	106	Total	O	0	0
			106	106		

3 Residue-property plots [i](#)

These plots are drawn for all protein, RNA, DNA and oligosaccharide chains in the entry. The first graphic for a chain summarises the proportions of the various outlier classes displayed in the second graphic. The second graphic shows the sequence view annotated by issues in geometry and electron density. Residues are color-coded according to the number of geometric quality criteria for which they contain at least one outlier: green = 0, yellow = 1, orange = 2 and red = 3 or more. A red dot above a residue indicates a poor fit to the electron density ($RSRZ > 2$). Stretches of 2 or more consecutive residues without any outlier are shown as a green connector. Residues present in the sample, but not in the model, are shown in grey.

- Molecule 1: Lytic transglycosylase domain-containing protein



4 Data and refinement statistics

Property	Value	Source
Space group	I 2 3	Depositor
Cell constants a, b, c, α , β , γ	176.49Å 176.49Å 176.49Å 90.00° 90.00° 90.00°	Depositor
Resolution (Å)	39.47 – 2.48 39.47 – 2.48	Depositor EDS
% Data completeness (in resolution range)	99.3 (39.47-2.48) 99.3 (39.47-2.48)	Depositor EDS
R_{merge}	0.15	Depositor
R_{sym}	(Not available)	Depositor
$\langle I/\sigma(I) \rangle$ ¹	1.09 (at 2.48Å)	Xtriage
Refinement program	REFMAC 5.8.0349	Depositor
R, R_{free}	0.178 , 0.215 (Not available) , 0.231	Depositor DCC
R_{free} test set	1660 reflections (5.15%)	wwPDB-VP
Wilson B-factor (Å ²)	58.4	Xtriage
Anisotropy	0.000	Xtriage
Bulk solvent k_{sol} (e/Å ³), B_{sol} (Å ²)	0.31 , 34.0	EDS
L-test for twinning ²	$\langle L \rangle = 0.51$, $\langle L^2 \rangle = 0.35$	Xtriage
Estimated twinning fraction	0.015 for -l,-k,-h	Xtriage
F_o, F_c correlation	0.97	EDS
Total number of atoms	4400	wwPDB-VP
Average B, all atoms (Å ²)	69.0	wwPDB-VP

Xtriage's analysis on translational NCS is as follows: *The largest off-origin peak in the Patterson function is 2.04% of the height of the origin peak. No significant pseudotranslation is detected.*

¹Intensities estimated from amplitudes.

²Theoretical values of $\langle |L| \rangle$, $\langle L^2 \rangle$ for acentric reflections are 0.5, 0.333 respectively for untwinned datasets, and 0.375, 0.2 for perfectly twinned datasets.

5 Model quality

5.1 Standard geometry

Bond lengths and bond angles in the following residue types are not validated in this section: ZI2, DMS, CIT

The Z score for a bond length (or angle) is the number of standard deviations the observed value is removed from the expected value. A bond length (or angle) with $|Z| > 5$ is considered an outlier worth inspection. RMSZ is the root-mean-square of all Z scores of the bond lengths (or angles).

Mol	Chain	Bond lengths		Bond angles	
		RMSZ	$\# Z > 5$	RMSZ	$\# Z > 5$
1	A	0.58	3/4352 (0.1%)	1.06	5/5872 (0.1%)

Chiral center outliers are detected by calculating the chiral volume of a chiral center and verifying if the center is modelled as a planar moiety or with the opposite hand. A planarity outlier is detected by checking planarity of atoms in a peptide group, atoms in a mainchain group or atoms of a sidechain that are expected to be planar.

Mol	Chain	#Chirality outliers	#Planarity outliers
1	A	0	7

All (3) bond length outliers are listed below:

Mol	Chain	Res	Type	Atoms	Z	Observed(Å)	Ideal(Å)
1	A	185	HIS	CE1-NE2	5.36	1.38	1.32
1	A	515	HIS	CE1-NE2	5.09	1.37	1.32
1	A	362	HIS	CE1-NE2	5.07	1.37	1.32

All (5) bond angle outliers are listed below:

Mol	Chain	Res	Type	Atoms	Z	Observed(°)	Ideal(°)
1	A	156	ASP	CA-CB-CG	5.57	118.17	112.60
1	A	519	ASP	CA-CB-CG	5.43	118.03	112.60
1	A	201	ASN	CB-CA-C	5.28	115.59	111.00
1	A	492	GLU	CB-CG-CD	5.24	121.51	112.60
1	A	430	ASP	CA-CB-CG	5.03	117.63	112.60

There are no chirality outliers.

All (7) planarity outliers are listed below:

Mol	Chain	Res	Type	Group
1	A	106	ARG	Sidechain
1	A	121	ARG	Sidechain
1	A	132	ARG	Sidechain
1	A	355	ARG	Sidechain
1	A	388	ARG	Sidechain
1	A	452	ARG	Sidechain
1	A	77	LYS	Peptide

5.2 Too-close contacts [i](#)

In the following table, the Non-H and H(model) columns list the number of non-hydrogen atoms and hydrogen atoms in the chain respectively. The H(added) column lists the number of hydrogen atoms added and optimized by MolProbity. The Clashes column lists the number of clashes within the asymmetric unit, whereas Symm-Clashes lists symmetry-related clashes.

Mol	Chain	Non-H	H(model)	H(added)	Clashes	Symm-Clashes
1	A	4251	0	4257	32	0
2	A	22	0	0	0	0
3	A	13	0	5	0	0
4	A	8	0	12	0	0
5	A	106	0	0	2	0
All	All	4400	0	4274	32	0

The all-atom clashscore is defined as the number of clashes found per 1000 atoms (including hydrogen atoms). The all-atom clashscore for this structure is 4.

All (32) close contacts within the same asymmetric unit are listed below, sorted by their clash magnitude.

Atom-1	Atom-2	Interatomic distance (Å)	Clash overlap (Å)
1:A:56:ASN:HD21	1:A:76:LEU:HD21	1.46	0.81
1:A:303:PRO:HB3	1:A:341:ASP:OD1	1.96	0.65
1:A:447:ASN:ND2	5:A:701:HOH:O	2.33	0.62
1:A:56:ASN:HD21	1:A:76:LEU:CD2	2.16	0.57
1:A:306:LYS:CE	1:A:306:LYS:HA	2.34	0.57
1:A:182:LEU:N	1:A:183:PRO:CD	2.70	0.54
1:A:280:LEU:C	1:A:280:LEU:HD23	2.32	0.54
1:A:77:LYS:C	1:A:78:PRO:O	2.52	0.53
1:A:448:TYR:CE1	1:A:452:ARG:NH2	2.78	0.52
1:A:110:LEU:HD23	1:A:163:LEU:HD23	1.92	0.51
1:A:36:TYR:CZ	1:A:40:ARG:HD2	2.46	0.51
1:A:511:ILE:HG13	1:A:523:ILE:HD12	1.94	0.50

Continued on next page...

Continued from previous page...

Atom-1	Atom-2	Interatomic distance (Å)	Clash overlap (Å)
1:A:65:LYS:O	1:A:69:GLU:HB2	2.12	0.50
1:A:395:PRO:O	1:A:405:GLY:HA2	2.12	0.50
1:A:448:TYR:CE1	1:A:452:ARG:CZ	2.96	0.48
1:A:306:LYS:HA	1:A:306:LYS:HE2	1.95	0.48
1:A:259:PHE:CE2	1:A:263:LEU:HD22	2.49	0.48
1:A:78:PRO:HB3	1:A:79:TYR:HA	1.96	0.47
1:A:467:ILE:HG12	1:A:471:ASN:ND2	2.29	0.46
1:A:78:PRO:CB	1:A:79:TYR:HA	2.46	0.45
1:A:507:LEU:HD11	1:A:526:ILE:HG21	1.98	0.44
1:A:77:LYS:N	1:A:78:PRO:CD	2.80	0.44
1:A:182:LEU:N	1:A:183:PRO:HD3	2.32	0.44
1:A:331:SER:O	1:A:335:VAL:HG23	2.19	0.43
1:A:63:ILE:HG22	1:A:64:GLY:N	2.34	0.42
1:A:99:ASN:O	1:A:103:GLN:HG3	2.20	0.42
1:A:36:TYR:O	1:A:39:TYR:HB3	2.20	0.41
1:A:200:GLU:O	1:A:201:ASN:C	2.64	0.41
1:A:197:ILE:CG2	1:A:495:PRO:HA	2.51	0.41
1:A:103:GLN:O	1:A:107:LEU:HG	2.21	0.40
1:A:174:LEU:HD22	1:A:178:LEU:HD23	2.03	0.40
1:A:184:ASN:HB3	5:A:789:HOH:O	2.21	0.40

There are no symmetry-related clashes.

5.3 Torsion angles [i](#)

5.3.1 Protein backbone [i](#)

In the following table, the Percentiles column shows the percent Ramachandran outliers of the chain as a percentile score with respect to all X-ray entries followed by that with respect to entries of similar resolution.

The Analysed column shows the number of residues for which the backbone conformation was analysed, and the total number of residues.

Mol	Chain	Analysed	Favoured	Allowed	Outliers	Percentiles
1	A	511/544 (94%)	493 (96%)	16 (3%)	2 (0%)	30 46

All (2) Ramachandran outliers are listed below:

Mol	Chain	Res	Type
1	A	78	PRO

Continued on next page...

Continued from previous page...

Mol	Chain	Res	Type
1	A	454	LYS

5.3.2 Protein sidechains ⓘ

In the following table, the Percentiles column shows the percent sidechain outliers of the chain as a percentile score with respect to all X-ray entries followed by that with respect to entries of similar resolution.

The Analysed column shows the number of residues for which the sidechain conformation was analysed, and the total number of residues.

Mol	Chain	Analysed	Rotameric	Outliers	Percentiles	
1	A	469/496 (95%)	449 (96%)	20 (4%)	26	48

All (20) residues with a non-rotameric sidechain are listed below:

Mol	Chain	Res	Type
1	A	23	GLU
1	A	79	TYR
1	A	100	LEU
1	A	118	SER
1	A	119	LYS
1	A	129	LYS
1	A	130	ASN
1	A	131	GLN
1	A	168	LYS
1	A	179	VAL
1	A	198	LYS
1	A	219	ASP
1	A	252	SER
1	A	306	LYS
1	A	370	ASP
1	A	447	ASN
1	A	452	ARG
1	A	454	LYS
1	A	469	PHE
1	A	532	GLN

Sometimes sidechains can be flipped to improve hydrogen bonding and reduce clashes. All (10) such sidechains are listed below:

Mol	Chain	Res	Type
1	A	56	ASN
1	A	103	GLN
1	A	193	GLN
1	A	253	ASN
1	A	319	GLN
1	A	343	GLN
1	A	389	GLN
1	A	471	ASN
1	A	497	GLN
1	A	532	GLN

5.3.3 RNA [i](#)

There are no RNA molecules in this entry.

5.4 Non-standard residues in protein, DNA, RNA chains [i](#)

There are no non-standard protein/DNA/RNA residues in this entry.

5.5 Carbohydrates [i](#)

There are no oligosaccharides in this entry.

5.6 Ligand geometry [i](#)

4 ligands are modelled in this entry.

In the following table, the Counts columns list the number of bonds (or angles) for which Mogul statistics could be retrieved, the number of bonds (or angles) that are observed in the model and the number of bonds (or angles) that are defined in the Chemical Component Dictionary. The Link column lists molecule types, if any, to which the group is linked. The Z score for a bond length (or angle) is the number of standard deviations the observed value is removed from the expected value. A bond length (or angle) with $|Z| > 2$ is considered an outlier worth inspection. RMSZ is the root-mean-square of all Z scores of the bond lengths (or angles).

Mol	Type	Chain	Res	Link	Bond lengths			Bond angles		
					Counts	RMSZ	$\# Z > 2$	Counts	RMSZ	$\# Z > 2$
4	DMS	A	604	-	3,3,3	0.41	0	3,3,3	0.31	0
3	CIT	A	602	-	12,12,12	1.26	1 (8%)	17,17,17	1.29	3 (17%)
2	ZI2	A	601	-	23,23,23	0.43	0	26,31,31	1.28	3 (11%)
4	DMS	A	603	-	3,3,3	0.23	0	3,3,3	0.23	0

In the following table, the Chirals column lists the number of chiral outliers, the number of chiral centers analysed, the number of these observed in the model and the number defined in the Chemical Component Dictionary. Similar counts are reported in the Torsion and Rings columns. '-' means no outliers of that kind were identified.

Mol	Type	Chain	Res	Link	Chirals	Torsions	Rings
3	CIT	A	602	-	-	2/16/16/16	-
2	ZI2	A	601	-	-	3/11/39/39	0/2/2/2

All (1) bond length outliers are listed below:

Mol	Chain	Res	Type	Atoms	Z	Observed(Å)	Ideal(Å)
3	A	602	CIT	C3-C6	2.91	1.56	1.53

All (6) bond angle outliers are listed below:

Mol	Chain	Res	Type	Atoms	Z	Observed(°)	Ideal(°)
2	A	601	ZI2	O7-C10-C11	3.52	113.03	109.56
2	A	601	ZI2	C8-C3-N1	2.73	115.50	110.92
3	A	602	CIT	O5-C6-C3	-2.55	117.14	122.09
3	A	602	CIT	O6-C6-C3	2.44	117.81	113.14
3	A	602	CIT	O3-C5-C4	-2.42	116.11	122.95
2	A	601	ZI2	O4-C8-O5	-2.29	104.64	110.04

There are no chirality outliers.

All (5) torsion outliers are listed below:

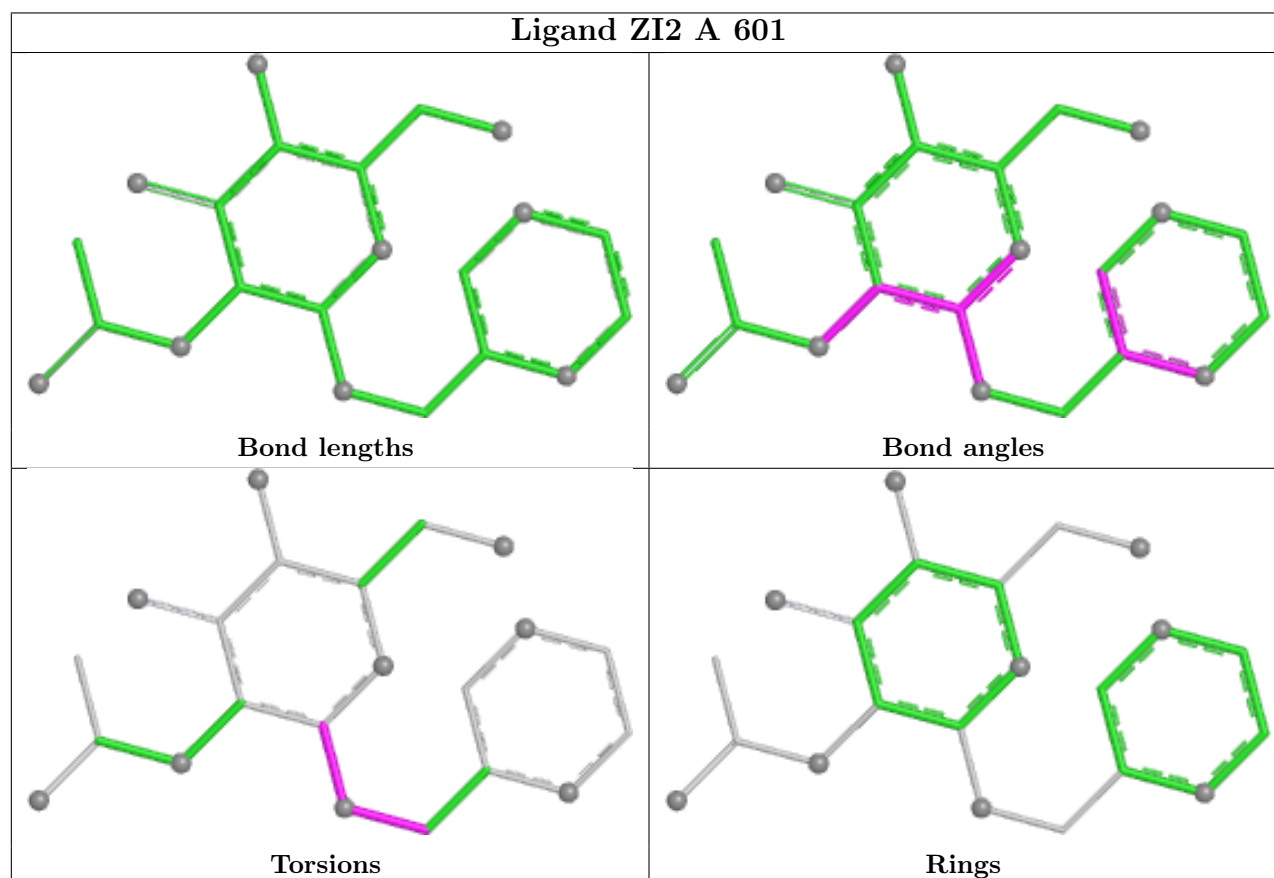
Mol	Chain	Res	Type	Atoms
2	A	601	ZI2	C3-C8-O5-C9
3	A	602	CIT	C3-C4-C5-O3
3	A	602	CIT	C3-C4-C5-O4
2	A	601	ZI2	C10-C9-O5-C8
2	A	601	ZI2	O4-C8-O5-C9

There are no ring outliers.

No monomer is involved in short contacts.

The following is a two-dimensional graphical depiction of Mogul quality analysis of bond lengths, bond angles, torsion angles, and ring geometry for all instances of the Ligand of Interest. In addition, ligands with molecular weight > 250 and outliers as shown on the validation Tables will also be included. For torsion angles, if less than 5% of the Mogul distribution of torsion angles is within 10 degrees of the torsion angle in question, then that torsion angle is considered an outlier. Any bond that is central to one or more torsion angles identified as an outlier by Mogul will be

highlighted in the graph. For rings, the root-mean-square deviation (RMSD) between the ring in question and similar rings identified by Mogul is calculated over all ring torsion angles. If the average RMSD is greater than 60 degrees and the minimal RMSD between the ring in question and any Mogul-identified rings is also greater than 60 degrees, then that ring is considered an outlier. The outliers are highlighted in purple. The color gray indicates Mogul did not find sufficient equivalents in the CSD to analyse the geometry.



5.7 Other polymers [i](#)

There are no such residues in this entry.

5.8 Polymer linkage issues [i](#)

There are no chain breaks in this entry.

6 Fit of model and data [i](#)

6.1 Protein, DNA and RNA chains [i](#)

In the following table, the column labelled ‘#RSRZ> 2’ contains the number (and percentage) of RSRZ outliers, followed by percent RSRZ outliers for the chain as percentile scores relative to all X-ray entries and entries of similar resolution. The OWAB column contains the minimum, median, 95th percentile and maximum values of the occupancy-weighted average B-factor per residue. The column labelled ‘Q< 0.9’ lists the number of (and percentage) of residues with an average occupancy less than 0.9.

Mol	Chain	Analysed	<RSRZ>	#RSRZ>2	OWAB(Å ²)	Q<0.9
1	A	513/544 (94%)	-0.16	8 (1%) 70 68	46, 64, 105, 155	0

All (8) RSRZ outliers are listed below:

Mol	Chain	Res	Type	RSRZ
1	A	76	LEU	4.7
1	A	496	TYR	3.4
1	A	20	TYR	3.3
1	A	420	LYS	3.0
1	A	77	LYS	2.8
1	A	80	ILE	2.6
1	A	532	GLN	2.5
1	A	78	PRO	2.3

6.2 Non-standard residues in protein, DNA, RNA chains [i](#)

There are no non-standard protein/DNA/RNA residues in this entry.

6.3 Carbohydrates [i](#)

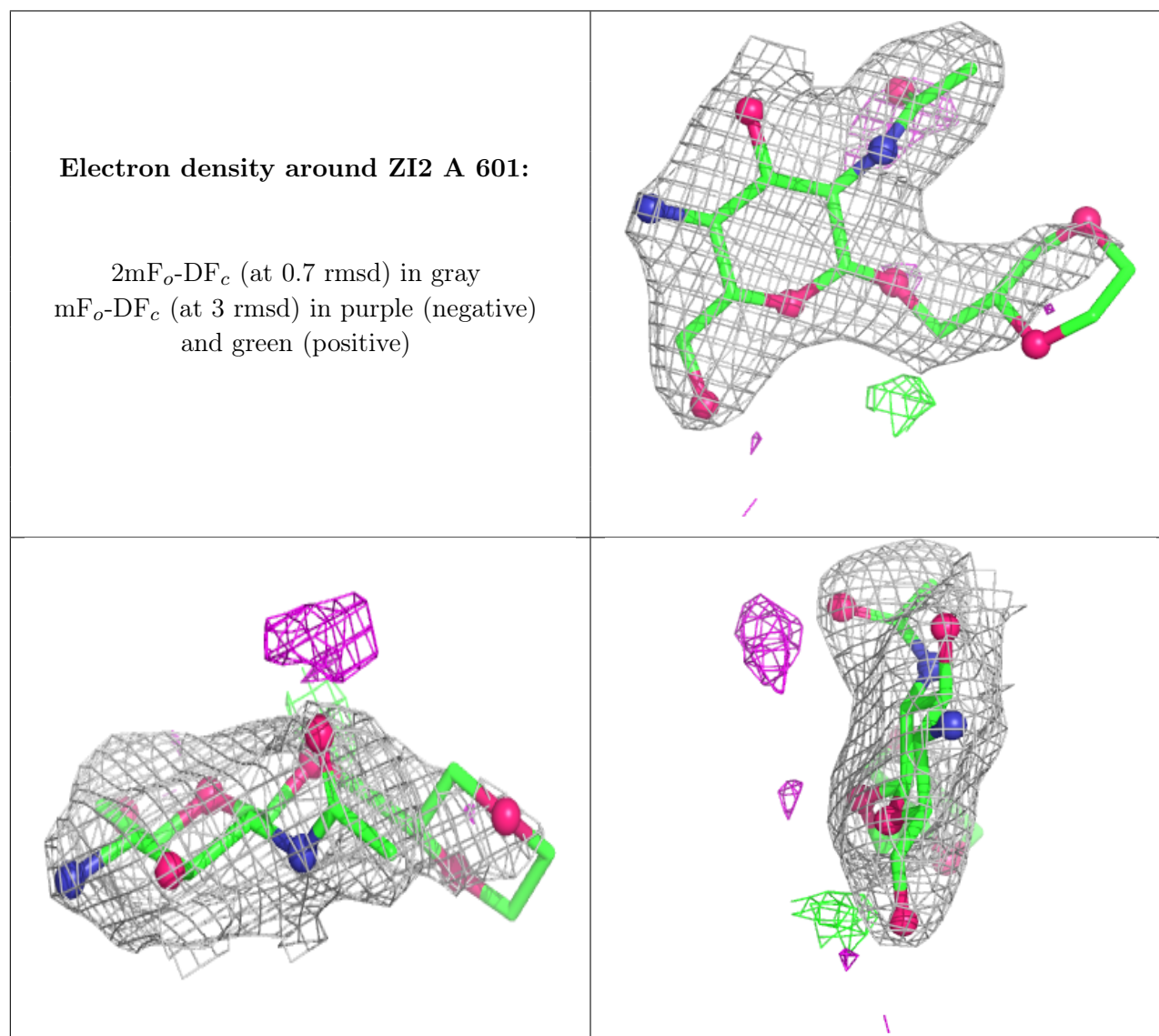
There are no oligosaccharides in this entry.

6.4 Ligands [i](#)

In the following table, the Atoms column lists the number of modelled atoms in the group and the number defined in the chemical component dictionary. The B-factors column lists the minimum, median, 95th percentile and maximum values of B factors of atoms in the group. The column labelled ‘Q< 0.9’ lists the number of atoms with occupancy less than 0.9.

Mol	Type	Chain	Res	Atoms	RSCC	RSR	B-factors(\AA^2)	Q<0.9
3	CIT	A	602	13/13	0.81	0.11	84,104,124,125	0
2	ZI2	A	601	22/22	0.92	0.13	55,68,127,132	0
4	DMS	A	603	4/4	0.97	0.13	76,79,79,89	0
4	DMS	A	604	4/4	0.97	0.11	61,71,72,73	0

The following is a graphical depiction of the model fit to experimental electron density of all instances of the Ligand of Interest. In addition, ligands with molecular weight > 250 and outliers as shown on the geometry validation Tables will also be included. Each fit is shown from different orientation to approximate a three-dimensional view.



6.5 Other polymers ⓘ

There are no such residues in this entry.