



Full wwPDB X-ray Structure Validation Report ⓘ

Mar 14, 2026 – 01:01 PM UTC

PDB ID : 8QKE / pdb_00008qke
Title : PvSub1 Catalytic Domain in Complex with Peptidomimetic Inhibitor (MH-13)
Authors : Batista, F.A.; Martinez, M.; Bouillon, A.; Mechaly, A.; Alzari, P.M.; Haouz, A.; Barale, J.C.
Deposited on : 2023-09-15
Resolution : 1.50 Å(reported)

This is a Full wwPDB X-ray Structure Validation Report for a publicly released PDB entry.

We welcome your comments at validation@mail.wwpdb.org

A user guide is available at

<https://www.wwpdb.org/validation/2017/XrayValidationReportHelp>

with specific help available everywhere you see the ⓘ symbol.

The types of validation reports are described at

<http://www.wwpdb.org/validation/2017/FAQs#types>.

The following versions of software and data (see [references ⓘ](#)) were used in the production of this report:

MolProbity	:	4-5-2 with Phenix2.0
Mogul	:	2022.3.0, CSD as543be (2022)
Xtriage (Phenix)	:	2.0
EDS	:	3.0
Percentile statistics	:	20250101.v01 (using entries in the PDB archive January 1st 2025)
CCP4	:	9.0.010 (Gargrove)
Density-Fitness	:	1.0.12
Ideal geometry (proteins)	:	Engh & Huber (2001)
Ideal geometry (DNA, RNA)	:	Parkinson et al. (1996)
Validation Pipeline (wwPDB-VP)	:	2.49

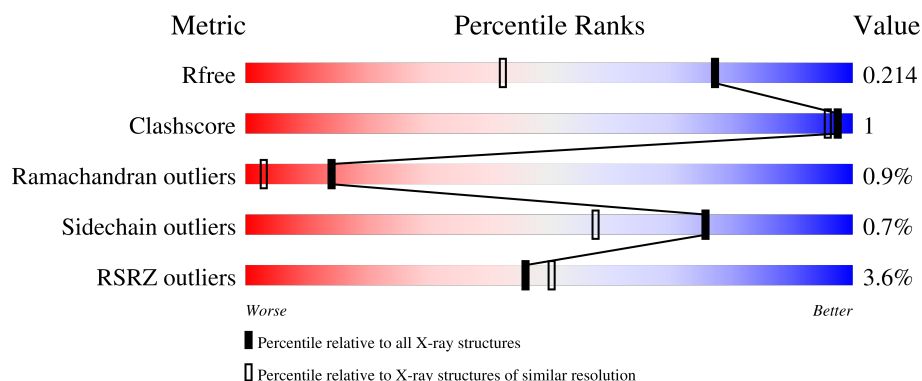
1 Overall quality at a glance

The following experimental techniques were used to determine the structure:

X-RAY DIFFRACTION

The reported resolution of this entry is 1.50 Å.

Percentile scores (ranging between 0-100) for global validation metrics of the entry are shown in the following graphic. The table shows the number of entries on which the scores are based.



Metric	Whole archive (#Entries)	Similar resolution (#Entries, resolution range(Å))
R_{free}	180053	4037 (1.50-1.50)
Clashscore	190562	4235 (1.50-1.50)
Ramachandran outliers	187476	4153 (1.50-1.50)
Sidechain outliers	187428	4150 (1.50-1.50)
RSRZ outliers	180081	4039 (1.50-1.50)

The table below summarises the geometric issues observed across the polymeric chains and their fit to the electron density. The red, orange, yellow and green segments of the lower bar indicate the fraction of residues that contain outliers for ≥ 3 , 2, 1 and 0 types of geometric quality criteria respectively. A grey segment represents the fraction of residues that are not modelled. The numeric value for each fraction is indicated below the corresponding segment, with a dot representing fractions $\leq 5\%$. The upper red bar (where present) indicates the fraction of residues that have poor fit to the electron density. The numeric value is given above the bar.

Mol	Chain	Length	Quality of chain
1	A	631	<div> <div>2%</div> <div>51%</div> <div>47%</div> </div>
1	B	631	<div> <div>2%</div> <div>52%</div> <div>47%</div> </div>
2	C	7	<div> <div>14%</div> <div>71%</div> <div>29%</div> </div>
2	D	7	<div> <div>14%</div> <div>71%</div> <div>29%</div> </div>

2 Entry composition

There are 6 unique types of molecules in this entry. The entry contains 5698 atoms, of which 0 are hydrogens and 0 are deuteriums.

In the tables below, the ZeroOcc column contains the number of atoms modelled with zero occupancy, the AltConf column contains the number of residues with at least one atom in alternate conformation and the Trace column contains the number of residues modelled with at most 2 atoms.

- Molecule 1 is a protein called subtilisin.

Mol	Chain	Residues	Atoms					ZeroOcc	AltConf	Trace
1	A	333	Total	C	N	O	S	0	1	0
			2582	1619	455	496	12			
1	B	336	Total	C	N	O	S	0	0	0
			2603	1631	458	502	12			

There are 58 discrepancies between the modelled and reference sequences:

Chain	Residue	Modelled	Actual	Comment	Reference
A	6	MET	-	initiating methionine	UNP E6Y8B9
A	7	LYS	-	expression tag	UNP E6Y8B9
A	8	LEU	-	expression tag	UNP E6Y8B9
A	9	CYS	-	expression tag	UNP E6Y8B9
A	10	ILE	-	expression tag	UNP E6Y8B9
A	11	LEU	-	expression tag	UNP E6Y8B9
A	12	LEU	-	expression tag	UNP E6Y8B9
A	13	ALA	-	expression tag	UNP E6Y8B9
A	14	VAL	-	expression tag	UNP E6Y8B9
A	15	VAL	-	expression tag	UNP E6Y8B9
A	16	ALA	-	expression tag	UNP E6Y8B9
A	17	PHE	-	expression tag	UNP E6Y8B9
A	18	VAL	-	expression tag	UNP E6Y8B9
A	19	GLY	-	expression tag	UNP E6Y8B9
A	20	LEU	-	expression tag	UNP E6Y8B9
A	21	SER	-	expression tag	UNP E6Y8B9
A	22	LEU	-	expression tag	UNP E6Y8B9
A	23	GLY	-	expression tag	UNP E6Y8B9
A	24	ARG	-	expression tag	UNP E6Y8B9
A	25	SER	-	expression tag	UNP E6Y8B9
A	361	SER	ASN	engineered mutation	UNP E6Y8B9
A	432	SER	ASN	engineered mutation	UNP E6Y8B9
A	445	SER	ASN	engineered mutation	UNP E6Y8B9
A	631	HIS	-	expression tag	UNP E6Y8B9
A	632	HIS	-	expression tag	UNP E6Y8B9

Continued on next page...

Continued from previous page...

Chain	Residue	Modelled	Actual	Comment	Reference
A	633	HIS	-	expression tag	UNP E6Y8B9
A	634	HIS	-	expression tag	UNP E6Y8B9
A	635	HIS	-	expression tag	UNP E6Y8B9
A	636	HIS	-	expression tag	UNP E6Y8B9
B	6	MET	-	initiating methionine	UNP E6Y8B9
B	7	LYS	-	expression tag	UNP E6Y8B9
B	8	LEU	-	expression tag	UNP E6Y8B9
B	9	CYS	-	expression tag	UNP E6Y8B9
B	10	ILE	-	expression tag	UNP E6Y8B9
B	11	LEU	-	expression tag	UNP E6Y8B9
B	12	LEU	-	expression tag	UNP E6Y8B9
B	13	ALA	-	expression tag	UNP E6Y8B9
B	14	VAL	-	expression tag	UNP E6Y8B9
B	15	VAL	-	expression tag	UNP E6Y8B9
B	16	ALA	-	expression tag	UNP E6Y8B9
B	17	PHE	-	expression tag	UNP E6Y8B9
B	18	VAL	-	expression tag	UNP E6Y8B9
B	19	GLY	-	expression tag	UNP E6Y8B9
B	20	LEU	-	expression tag	UNP E6Y8B9
B	21	SER	-	expression tag	UNP E6Y8B9
B	22	LEU	-	expression tag	UNP E6Y8B9
B	23	GLY	-	expression tag	UNP E6Y8B9
B	24	ARG	-	expression tag	UNP E6Y8B9
B	25	SER	-	expression tag	UNP E6Y8B9
B	361	SER	ASN	engineered mutation	UNP E6Y8B9
B	432	SER	ASN	engineered mutation	UNP E6Y8B9
B	445	SER	ASN	engineered mutation	UNP E6Y8B9
B	631	HIS	-	expression tag	UNP E6Y8B9
B	632	HIS	-	expression tag	UNP E6Y8B9
B	633	HIS	-	expression tag	UNP E6Y8B9
B	634	HIS	-	expression tag	UNP E6Y8B9
B	635	HIS	-	expression tag	UNP E6Y8B9
B	636	HIS	-	expression tag	UNP E6Y8B9

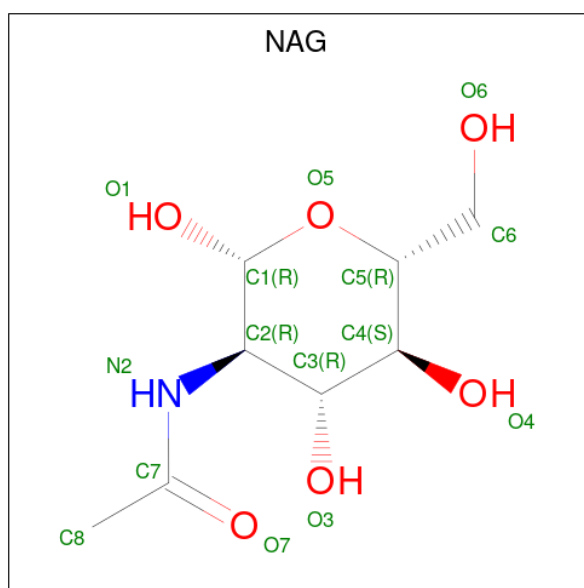
- Molecule 2 is a protein called Peptidomimetic Inhibitor (MH-13).

Mol	Chain	Residues	Atoms				ZeroOcc	AltConf	Trace
2	C	7	Total	C	N	O	0	0	0
			44	27	6	11			
2	D	7	Total	C	N	O	0	0	0
			44	27	6	11			

- Molecule 3 is CALCIUM ION (CCD ID: CA) (formula: Ca).

Mol	Chain	Residues	Atoms		ZeroOcc	AltConf
3	A	3	Total	Ca	0	0
			3	3		
3	B	3	Total	Ca	0	0
			3	3		

- Molecule 4 is 2-acetamido-2-deoxy-beta-D-glucopyranose (CCD ID: NAG) (formula: C₈H₁₅NO₆).



Mol	Chain	Residues	Atoms				ZeroOcc	AltConf
4	A	1	Total	C	N	O	0	0
			14	8	1	5		

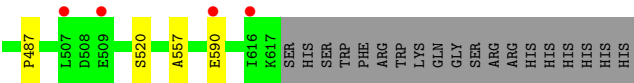
- Molecule 5 is SULFATE ION (CCD ID: SO4) (formula: O₄S).



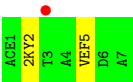
Mol	Chain	Residues	Atoms			ZeroOcc	AltConf
5	A	1	Total	O	S	0	0
			5	4	1		
5	B	1	Total	O	S	0	0
			5	4	1		

- Molecule 6 is water.

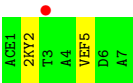
Mol	Chain	Residues	Atoms		ZeroOcc	AltConf
6	A	209	Total	O	0	0
			209	209		
6	B	181	Total	O	0	0
			181	181		
6	C	3	Total	O	0	0
			3	3		
6	D	2	Total	O	0	0
			2	2		



● Molecule 2: Peptidomimetic Inhibitor (MH-13)



● Molecule 2: Peptidomimetic Inhibitor (MH-13)



4 Data and refinement statistics

Property	Value	Source
Space group	P 1	Depositor
Cell constants a, b, c, α , β , γ	53.02Å 54.71Å 69.14Å 69.39° 78.52° 75.02°	Depositor
Resolution (Å)	21.65 – 1.50 21.65 – 1.50	Depositor EDS
% Data completeness (in resolution range)	94.4 (21.65-1.50) 94.4 (21.65-1.50)	Depositor EDS
R_{merge}	(Not available)	Depositor
R_{sym}	(Not available)	Depositor
$\langle I/\sigma(I) \rangle$ ¹	0.99 (at 1.50Å)	Xtriage
Refinement program	BUSTER 2.10.4	Depositor
R, R_{free}	0.209 , 0.226 0.199 , 0.214	Depositor DCC
R_{free} test set	5232 reflections (4.72%)	wwPDB-VP
Wilson B-factor (Å ²)	25.8	Xtriage
Anisotropy	0.209	Xtriage
Bulk solvent k_{sol} (e/Å ³), B_{sol} (Å ²)	0.41 , 39.7	EDS
L-test for twinning ²	$\langle L \rangle = 0.51$, $\langle L^2 \rangle = 0.35$	Xtriage
Estimated twinning fraction	No twinning to report.	Xtriage
F_o, F_c correlation	0.97	EDS
Total number of atoms	5698	wwPDB-VP
Average B, all atoms (Å ²)	30.0	wwPDB-VP

Xtriage's analysis on translational NCS is as follows: *The largest off-origin peak in the Patterson function is 6.84% of the height of the origin peak. No significant pseudotranslation is detected.*

¹Intensities estimated from amplitudes.

²Theoretical values of $\langle |L| \rangle$, $\langle L^2 \rangle$ for acentric reflections are 0.5, 0.333 respectively for untwinned datasets, and 0.375, 0.2 for perfectly twinned datasets.

5 Model quality [i](#)

5.1 Standard geometry [i](#)

Bond lengths and bond angles in the following residue types are not validated in this section: SO4, 2KY, ACE, NAG, 5XU, CA, VEF

The Z score for a bond length (or angle) is the number of standard deviations the observed value is removed from the expected value. A bond length (or angle) with $|Z| > 5$ is considered an outlier worth inspection. RMSZ is the root-mean-square of all Z scores of the bond lengths (or angles).

Mol	Chain	Bond lengths		Bond angles	
		RMSZ	$\# Z > 5$	RMSZ	$\# Z > 5$
1	A	0.75	0/2634	0.95	0/3575
1	B	0.73	0/2652	0.95	0/3600
2	C	0.39	0/18	0.89	0/22
2	D	0.36	0/18	0.89	0/22
All	All	0.74	0/5322	0.95	0/7219

Chiral center outliers are detected by calculating the chiral volume of a chiral center and verifying if the center is modelled as a planar moiety or with the opposite hand. A planarity outlier is detected by checking planarity of atoms in a peptide group, atoms in a mainchain group or atoms of a sidechain that are expected to be planar.

Mol	Chain	#Chirality outliers	#Planarity outliers
2	C	0	2
2	D	0	2
All	All	0	4

There are no bond length outliers.

There are no bond angle outliers.

There are no chirality outliers.

All (4) planarity outliers are listed below:

Mol	Chain	Res	Type	Group
2	C	5	VEF	Peptide,Mainchain
2	D	5	VEF	Peptide,Mainchain

5.2 Too-close contacts ⓘ

In the following table, the Non-H and H(model) columns list the number of non-hydrogen atoms and hydrogen atoms in the chain respectively. The H(added) column lists the number of hydrogen atoms added and optimized by MolProbity. The Clashes column lists the number of clashes within the asymmetric unit, whereas Symm-Clashes lists symmetry-related clashes.

Mol	Chain	Non-H	H(model)	H(added)	Clashes	Symm-Clashes
1	A	2582	0	2528	4	0
1	B	2603	0	2543	4	0
2	C	44	0	25	0	0
2	D	44	0	24	0	0
3	A	3	0	0	0	0
3	B	3	0	0	0	0
4	A	14	0	13	0	0
5	A	5	0	0	0	0
5	B	5	0	0	0	0
6	A	209	0	0	0	0
6	B	181	0	0	0	0
6	C	3	0	0	0	0
6	D	2	0	0	0	0
All	All	5698	0	5133	8	0

The all-atom clashscore is defined as the number of clashes found per 1000 atoms (including hydrogen atoms). The all-atom clashscore for this structure is 1.

All (8) close contacts within the same asymmetric unit are listed below, sorted by their clash magnitude.

Atom-1	Atom-2	Interatomic distance (Å)	Clash overlap (Å)
1:B:311:LYS:H	1:B:429:HIS:HD2	1.26	0.81
1:B:311:LYS:H	1:B:429:HIS:CD2	2.15	0.53
1:B:460:VAL:HG21	1:B:487:PRO:HD2	1.96	0.48
1:A:460:VAL:HG21	1:A:487:PRO:HD2	1.97	0.47
1:A:393:VAL:HB	1:A:557:ALA:CB	2.48	0.43
1:A:290:LEU:HD22	1:A:295:LEU:HD22	2.00	0.42
1:B:393:VAL:HB	1:B:557:ALA:CB	2.50	0.42
1:A:335:LYS:HB2	1:A:346:ASP:HB3	2.03	0.41

There are no symmetry-related clashes.

5.3 Torsion angles

5.3.1 Protein backbone

In the following table, the Percentiles column shows the percent Ramachandran outliers of the chain as a percentile score with respect to all X-ray entries followed by that with respect to entries of similar resolution.

The Analysed column shows the number of residues for which the backbone conformation was analysed, and the total number of residues.

Mol	Chain	Analysed	Favoured	Allowed	Outliers	Percentiles	
1	A	330/631 (52%)	320 (97%)	7 (2%)	3 (1%)	14	3
1	B	332/631 (53%)	319 (96%)	10 (3%)	3 (1%)	14	3
2	C	3/7 (43%)	3 (100%)	0	0	100	100
2	D	3/7 (43%)	3 (100%)	0	0	100	100
All	All	668/1276 (52%)	645 (97%)	17 (2%)	6 (1%)	14	3

All (6) Ramachandran outliers are listed below:

Mol	Chain	Res	Type
1	A	371	TYR
1	B	371	TYR
1	A	520	SER
1	B	520	SER
1	A	463	SER
1	B	463	SER

5.3.2 Protein sidechains

In the following table, the Percentiles column shows the percent sidechain outliers of the chain as a percentile score with respect to all X-ray entries followed by that with respect to entries of similar resolution.

The Analysed column shows the number of residues for which the sidechain conformation was analysed, and the total number of residues.

Mol	Chain	Analysed	Rotameric	Outliers	Percentiles	
1	A	288/551 (52%)	286 (99%)	2 (1%)	76	57
1	B	290/551 (53%)	288 (99%)	2 (1%)	76	57
2	C	2/2 (100%)	2 (100%)	0	100	100
2	D	2/2 (100%)	2 (100%)	0	100	100

Continued on next page...

Continued from previous page...

Mol	Chain	Analysed	Rotameric	Outliers	Percentiles	
All	All	582/1106 (53%)	578 (99%)	4 (1%)	76	57

All (4) residues with a non-rotameric sidechain are listed below:

Mol	Chain	Res	Type
1	A	277	TYR
1	A	341	LYS
1	B	278	LYS
1	B	590	GLU

Sometimes sidechains can be flipped to improve hydrogen bonding and reduce clashes. All (8) such sidechains are listed below:

Mol	Chain	Res	Type
1	A	516	ASN
1	A	605	ASN
1	B	285	ASN
1	B	299	GLN
1	B	338	HIS
1	B	429	HIS
1	B	532	ASN
1	B	605	ASN

5.3.3 RNA ⓘ

There are no RNA molecules in this entry.

5.4 Non-standard residues in protein, DNA, RNA chains ⓘ

6 non-standard protein/DNA/RNA residues are modelled in this entry.

In the following table, the Counts columns list the number of bonds (or angles) for which Mogul statistics could be retrieved, the number of bonds (or angles) that are observed in the model and the number of bonds (or angles) that are defined in the Chemical Component Dictionary. The Link column lists molecule types, if any, to which the group is linked. The Z score for a bond length (or angle) is the number of standard deviations the observed value is removed from the expected value. A bond length (or angle) with $|Z| > 2$ is considered an outlier worth inspection. RMSZ is the root-mean-square of all Z scores of the bond lengths (or angles).

Mol	Type	Chain	Res	Link	Bond lengths			Bond angles		
					Counts	RMSZ	$\# Z > 2$	Counts	RMSZ	$\# Z > 2$
2	5XU	C	7	2	3,4,4	0.35	0	2,4,4	0.29	0

Mol	Type	Chain	Res	Link	Bond lengths			Bond angles		
					Counts	RMSZ	# Z > 2	Counts	RMSZ	# Z > 2
2	2KY	C	2	2	8,9,10	0.51	0	6,11,13	1.15	1 (16%)
2	2KY	D	2	2	8,9,10	0.53	0	6,11,13	1.21	1 (16%)
2	VEF	C	5	2,1	4,6,8	0.58	0	3,7,12	0.86	0
2	5XU	D	7	2	3,4,4	0.38	0	2,4,4	0.43	0
2	VEF	D	5	2,1	4,6,8	0.50	0	3,7,12	0.59	0

In the following table, the Chirals column lists the number of chiral outliers, the number of chiral centers analysed, the number of these observed in the model and the number defined in the Chemical Component Dictionary. Similar counts are reported in the Torsion and Rings columns. '-' means no outliers of that kind were identified.

Mol	Type	Chain	Res	Link	Chirals	Torsions	Rings
2	5XU	C	7	2	-	0/1/2/2	-
2	2KY	C	2	2	-	2/3/13/15	0/1/1/1
2	2KY	D	2	2	-	2/3/13/15	0/1/1/1
2	VEF	C	5	2,1	-	1/5/6/12	-
2	5XU	D	7	2	-	1/1/2/2	-
2	VEF	D	5	2,1	-	1/5/6/12	-

There are no bond length outliers.

All (2) bond angle outliers are listed below:

Mol	Chain	Res	Type	Atoms	Z	Observed(°)	Ideal(°)
2	D	2	2KY	C35-C34-C33	-2.31	98.83	104.88
2	C	2	2KY	C35-C34-C33	-2.26	98.97	104.88

There are no chirality outliers.

All (7) torsion outliers are listed below:

Mol	Chain	Res	Type	Atoms
2	C	2	2KY	C34-C33-CA-C
2	C	2	2KY	C37-C33-CA-C
2	D	2	2KY	C34-C33-CA-C
2	D	2	2KY	C37-C33-CA-C
2	D	7	5XU	O-C-CA-CB
2	C	5	VEF	O-C-C2-CA
2	D	5	VEF	O-C-C2-CA

There are no ring outliers.

No monomer is involved in short contacts.

5.5 Carbohydrates [i](#)

There are no oligosaccharides in this entry.

5.6 Ligand geometry [i](#)

Of 9 ligands modelled in this entry, 6 are monoatomic - leaving 3 for Mogul analysis.

In the following table, the Counts columns list the number of bonds (or angles) for which Mogul statistics could be retrieved, the number of bonds (or angles) that are observed in the model and the number of bonds (or angles) that are defined in the Chemical Component Dictionary. The Link column lists molecule types, if any, to which the group is linked. The Z score for a bond length (or angle) is the number of standard deviations the observed value is removed from the expected value. A bond length (or angle) with $|Z| > 2$ is considered an outlier worth inspection. RMSZ is the root-mean-square of all Z scores of the bond lengths (or angles).

Mol	Type	Chain	Res	Link	Bond lengths			Bond angles		
					Counts	RMSZ	$\# Z > 2$	Counts	RMSZ	$\# Z > 2$
5	SO4	A	905	-	4,4,4	0.31	0	6,6,6	0.41	0
5	SO4	B	904	-	4,4,4	0.28	0	6,6,6	0.37	0
4	NAG	A	904	1	14,14,15	0.31	0	17,19,21	0.63	0

In the following table, the Chirals column lists the number of chiral outliers, the number of chiral centers analysed, the number of these observed in the model and the number defined in the Chemical Component Dictionary. Similar counts are reported in the Torsion and Rings columns. '-' means no outliers of that kind were identified.

Mol	Type	Chain	Res	Link	Chirals	Torsions	Rings
4	NAG	A	904	1	-	2/6/23/26	0/1/1/1

There are no bond length outliers.

There are no bond angle outliers.

There are no chirality outliers.

All (2) torsion outliers are listed below:

Mol	Chain	Res	Type	Atoms
4	A	904	NAG	C8-C7-N2-C2
4	A	904	NAG	O7-C7-N2-C2

There are no ring outliers.

No monomer is involved in short contacts.

5.7 Other polymers [i](#)

There are no such residues in this entry.

5.8 Polymer linkage issues [i](#)

There are no chain breaks in this entry.

6 Fit of model and data

6.1 Protein, DNA and RNA chains

In the following table, the column labelled ‘#RSRZ> 2’ contains the number (and percentage) of RSRZ outliers, followed by percent RSRZ outliers for the chain as percentile scores relative to all X-ray entries and entries of similar resolution. The OWAB column contains the minimum, median, 95th percentile and maximum values of the occupancy-weighted average B-factor per residue. The column labelled ‘Q< 0.9’ lists the number of (and percentage) of residues with an average occupancy less than 0.9.

Mol	Chain	Analysed	<RSRZ>	#RSRZ>2			OWAB(Å ²)	Q<0.9
1	A	333/631 (52%)	0.35	12 (3%)	46	50	19, 26, 40, 52	1 (0%)
1	B	336/631 (53%)	0.46	10 (2%)	52	56	21, 29, 44, 60	0
2	C	3/7 (42%)	0.85	1 (33%)	1	1	24, 24, 28, 35	0
2	D	3/7 (42%)	0.94	1 (33%)	1	1	27, 27, 32, 40	0
All	All	675/1276 (52%)	0.41	24 (3%)	46	50	19, 28, 43, 60	1 (0%)

All (24) RSRZ outliers are listed below:

Mol	Chain	Res	Type	RSRZ
1	A	277	TYR	8.8
1	B	507	LEU	5.0
1	B	277	TYR	5.0
1	A	340	ARG	3.3
1	A	507	LEU	3.3
1	B	509	GLU	2.8
1	B	468	ASP	2.7
1	B	590	GLU	2.6
1	B	616	ILE	2.6
1	A	347	SER	2.5
1	B	410	LEU	2.4
1	A	476	ALA	2.3
1	B	307	VAL	2.3
2	D	3	THR	2.3
1	A	466	ALA	2.3
1	A	612	ALA	2.2
2	C	3	THR	2.2
1	A	448	VAL	2.2
1	A	335	LYS	2.2
1	A	349	GLY	2.2
1	A	343	VAL	2.2

Continued on next page...

Continued from previous page...

Mol	Chain	Res	Type	RSRZ
1	B	438	ASP	2.1
1	B	475	ILE	2.0
1	A	521	ASN	2.0

6.2 Non-standard residues in protein, DNA, RNA chains [i](#)

In the following table, the Atoms column lists the number of modelled atoms in the group and the number defined in the chemical component dictionary. The B-factors column lists the minimum, median, 95th percentile and maximum values of B factors of atoms in the group. The column labelled 'Q< 0.9' lists the number of atoms with occupancy less than 0.9.

Mol	Type	Chain	Res	Atoms	RSCC	RSR	B-factors(Å ²)	Q<0.9
2	5XU	D	7	5/5	0.73	0.16	30,34,37,38	0
2	5XU	C	7	5/5	0.79	0.16	28,32,35,36	0
2	2KY	D	2	9/10	0.89	0.11	41,42,42,42	0
2	2KY	C	2	9/10	0.90	0.10	33,34,35,35	0
2	VEF	C	5	7/9	0.96	0.06	21,22,23,23	0
2	VEF	D	5	7/9	0.96	0.06	24,25,26,27	0

6.3 Carbohydrates [i](#)

There are no oligosaccharides in this entry.

6.4 Ligands [i](#)

In the following table, the Atoms column lists the number of modelled atoms in the group and the number defined in the chemical component dictionary. The B-factors column lists the minimum, median, 95th percentile and maximum values of B factors of atoms in the group. The column labelled 'Q< 0.9' lists the number of atoms with occupancy less than 0.9.

Mol	Type	Chain	Res	Atoms	RSCC	RSR	B-factors(Å ²)	Q<0.9
4	NAG	A	904	14/15	0.79	0.13	37,41,44,44	0
5	SO4	A	905	5/5	0.85	0.10	59,60,60,60	0
3	CA	A	903	1/1	0.95	0.07	30,30,30,30	0
3	CA	A	902	1/1	0.97	0.05	28,28,28,28	0
3	CA	B	903	1/1	0.97	0.06	29,29,29,29	0
5	SO4	B	904	5/5	0.97	0.06	35,35,36,36	0
3	CA	B	901	1/1	0.98	0.05	24,24,24,24	0
3	CA	A	901	1/1	0.99	0.04	22,22,22,22	0
3	CA	B	902	1/1	1.00	0.04	26,26,26,26	0

6.5 Other polymers [i](#)

There are no such residues in this entry.