



Full wwPDB X-ray Structure Validation Report ⓘ

Mar 29, 2026 – 02:44 PM UTC

PDB ID : 8XF8 / pdb_00008xf8
Title : High-resolution structure of the siderophore periplasmic binding protein FtsB from *Streptococcus pyogenes* with ferrioxamine B
Authors : Caaveiro, J.M.M.; Fernandez-Perez, J.; Tsumoto, K.
Deposited on : 2023-12-13
Resolution : 1.15 Å(reported)

This is a Full wwPDB X-ray Structure Validation Report for a publicly released PDB entry.

We welcome your comments at validation@mail.wwpdb.org

A user guide is available at

<https://www.wwpdb.org/validation/2017/XrayValidationReportHelp>

with specific help available everywhere you see the ⓘ symbol.

The types of validation reports are described at

<http://www.wwpdb.org/validation/2017/FAQs#types>.

The following versions of software and data (see [references ⓘ](#)) were used in the production of this report:

MolProbity	:	FAILED
Mogul	:	2022.3.0, CSD as543be (2022)
Xtriage (Phenix)	:	2.0
EDS	:	3.0
Buster-report	:	wwPDB partial adaption of 1.1.7 (2018)
Percentile statistics	:	20250101.v01 (using entries in the PDB archive January 1st 2025)
CCP4	:	9.0.010 (Gargrove)
Density-Fitness	:	1.0.12
Ideal geometry (proteins)	:	Engh & Huber (2001)
Ideal geometry (DNA, RNA)	:	Parkinson et al. (1996)
Validation Pipeline (wwPDB-VP)	:	2.49

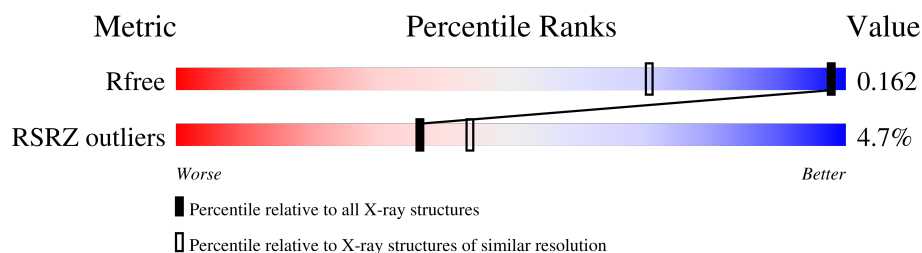
1 Overall quality at a glance

The following experimental techniques were used to determine the structure:

X-RAY DIFFRACTION

The reported resolution of this entry is 1.15 Å.

Percentile scores (ranging between 0-100) for global validation metrics of the entry are shown in the following graphic. The table shows the number of entries on which the scores are based.



Metric	Whole archive (#Entries)	Similar resolution (#Entries, resolution range(Å))
R_{free}	180053	1380 (1.16-1.12)
RSRZ outliers	180081	1379 (1.16-1.12)

MolProbity failed to run properly - the sequence quality summary graphics cannot be shown.

2 Entry composition [i](#)

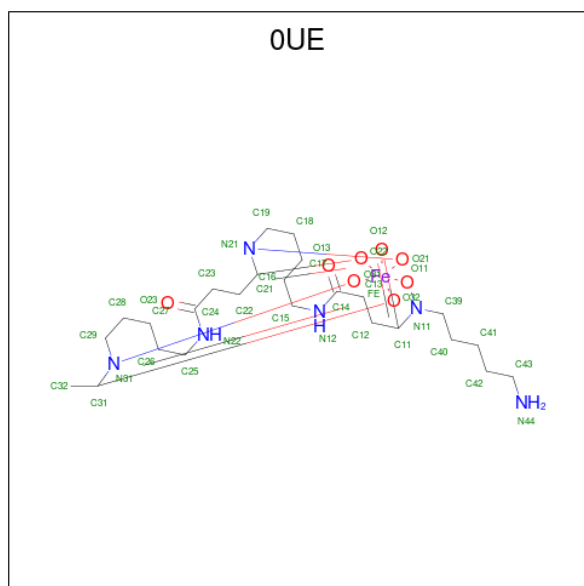
There are 7 unique types of molecules in this entry. The entry contains 2813 atoms, of which 0 are hydrogens and 0 are deuteriums.

In the tables below, the ZeroOcc column contains the number of atoms modelled with zero occupancy, the AltConf column contains the number of residues with at least one atom in alternate conformation and the Trace column contains the number of residues modelled with at most 2 atoms.

- Molecule 1 is a protein called Iron-hydroxamate ABC transporter substrate-binding protein FtsB.

Mol	Chain	Residues	Atoms					ZeroOcc	AltConf	Trace
1	A	279	Total	C	N	O	S	0	21	0
			2338	1530	368	435	5			

- Molecule 2 is Ferrioxamine B (CCD ID: 0UE) (formula: $C_{25}H_{45}FeN_6O_8$) (labeled as "Ligand of Interest" by depositor).

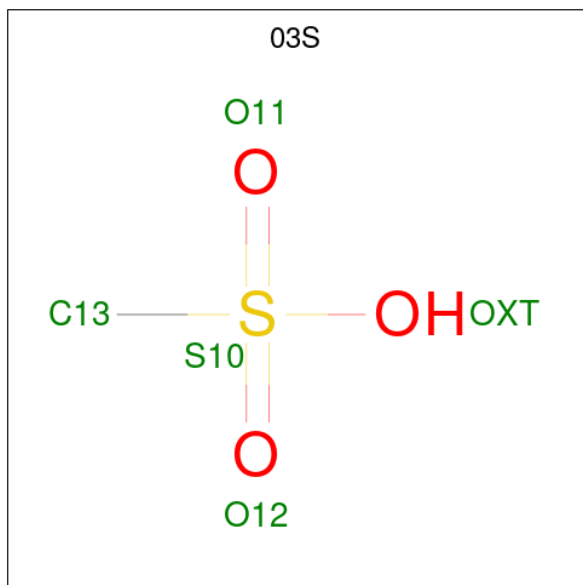


- Molecule 4 is 1,2-ETHANEDIOL (CCD ID: EDO) (formula: $C_2H_6O_2$).



Mol	Chain	Residues	Atoms			ZeroOcc	AltConf
4	A	1	Total	C	O	0	0
			4	2	2		

- Molecule 5 is methanesulfonic acid (CCD ID: 03S) (formula: CH_4O_3S).



Mol	Chain	Residues	Atoms				ZeroOcc	AltConf
5	A	1	Total	C	O	S	0	0
			5	1	3	1		

- Molecule 6 is SODIUM ION (CCD ID: NA) (formula: Na).

Mol	Chain	Residues	Atoms		ZeroOcc	AltConf
6	A	2	Total 2	Na 2	0	0

- Molecule 7 is water.

Mol	Chain	Residues	Atoms		ZeroOcc	AltConf
7	A	415	Total 419	O 419	0	10

MolProbity failed to run properly - this section is therefore empty.

3 Data and refinement statistics

Property	Value	Source
Space group	P 65	Depositor
Cell constants a, b, c, α , β , γ	76.22Å 76.22Å 102.50Å 90.00° 90.00° 120.00°	Depositor
Resolution (Å)	40.50 – 1.15 40.50 – 1.15	Depositor EDS
% Data completeness (in resolution range)	94.9 (40.50-1.15) 94.9 (40.50-1.15)	Depositor EDS
R_{merge}	0.06	Depositor
R_{sym}	(Not available)	Depositor
$\langle I/\sigma(I) \rangle$ ¹	2.33 (at 1.15Å)	Xtriage
Refinement program	REFMAC 5.8.0419	Depositor
R, R_{free}	0.135 , 0.153 0.144 , 0.162	Depositor DCC
R_{free} test set	2277 reflections (1.91%)	wwPDB-VP
Wilson B-factor (Å ²)	12.3	Xtriage
Anisotropy	0.077	Xtriage
Bulk solvent k_{sol} (e/Å ³), B_{sol} (Å ²)	0.34 , 46.5	EDS
L-test for twinning ²	$\langle L \rangle = 0.50$, $\langle L^2 \rangle = 0.33$	Xtriage
Estimated twinning fraction	0.037 for h,-h-k,-l	Xtriage
F_o, F_c correlation	0.98	EDS
Total number of atoms	2813	wwPDB-VP
Average B, all atoms (Å ²)	16.0	wwPDB-VP

Xtriage's analysis on translational NCS is as follows: *The largest off-origin peak in the Patterson function is 3.94% of the height of the origin peak. No significant pseudotranslation is detected.*

¹Intensities estimated from amplitudes.

²Theoretical values of $\langle |L| \rangle$, $\langle L^2 \rangle$ for acentric reflections are 0.5, 0.333 respectively for untwinned datasets, and 0.375, 0.2 for perfectly twinned datasets.

4 Model quality [i](#)

4.1 Standard geometry [i](#)

MolProbity failed to run properly - this section is therefore empty.

4.2 Too-close contacts [i](#)

MolProbity failed to run properly - this section is therefore empty.

4.3 Torsion angles [i](#)

4.3.1 Protein backbone [i](#)

MolProbity failed to run properly - this section is therefore empty.

4.3.2 Protein sidechains [i](#)

MolProbity failed to run properly - this section is therefore empty.

4.3.3 RNA [i](#)

MolProbity failed to run properly - this section is therefore empty.

4.4 Non-standard residues in protein, DNA, RNA chains [i](#)

There are no non-standard protein/DNA/RNA residues in this entry.

4.5 Carbohydrates [i](#)

There are no oligosaccharides in this entry.

4.6 Ligand geometry [i](#)

Of 10 ligands modelled in this entry, 7 are monoatomic - leaving 3 for Mogul analysis.

In the following table, the Counts columns list the number of bonds (or angles) for which Mogul statistics could be retrieved, the number of bonds (or angles) that are observed in the model and the number of bonds (or angles) that are defined in the Chemical Component Dictionary. The Link column lists molecule types, if any, to which the group is linked. The Z score for a bond

length (or angle) is the number of standard deviations the observed value is removed from the expected value. A bond length (or angle) with $|Z| > 2$ is considered an outlier worth inspection. RMSZ is the root-mean-square of all Z scores of the bond lengths (or angles).

Mol	Type	Chain	Res	Link	Bond lengths			Bond angles		
					Counts	RMSZ	# $ Z > 2$	Counts	RMSZ	# $ Z > 2$
2	0UE	A	401	-	44,44,44	1.66	7 (15%)	44,66,66	1.85	7 (15%)
4	EDO	A	406	-	3,3,3	0.09	0	2,2,2	0.22	0
5	03S	A	407	-	4,4,4	1.60	2 (50%)	6,6,6	1.21	1 (16%)

In the following table, the Chirals column lists the number of chiral outliers, the number of chiral centers analysed, the number of these observed in the model and the number defined in the Chemical Component Dictionary. Similar counts are reported in the Torsion and Rings columns. '-' means no outliers of that kind were identified.

Mol	Type	Chain	Res	Link	Chirals	Torsions	Rings
2	0UE	A	401	-	2/2/9/11	1/34/88/88	0/3/5/5
4	EDO	A	406	-	-	1/1/1/1	-

All (9) bond length outliers are listed below:

Mol	Chain	Res	Type	Atoms	Z	Observed(Å)	Ideal(Å)
2	A	401	0UE	O31-N31	-4.76	1.30	1.38
2	A	401	0UE	O21-N21	-4.68	1.30	1.38
2	A	401	0UE	O11-N11	-4.63	1.30	1.38
2	A	401	0UE	C11-N11	3.91	1.37	1.31
2	A	401	0UE	C21-N21	3.51	1.36	1.31
2	A	401	0UE	O32-FE	-3.24	1.95	2.04
2	A	401	0UE	C31-N31	2.65	1.39	1.31
5	A	407	03S	O12-S10	2.09	1.51	1.44
5	A	407	03S	O11-S10	2.01	1.51	1.44

All (8) bond angle outliers are listed below:

Mol	Chain	Res	Type	Atoms	Z	Observed(°)	Ideal(°)
2	A	401	0UE	O12-C11-N11	-6.41	113.48	118.38
2	A	401	0UE	O22-C21-N21	-5.67	114.05	118.38
2	A	401	0UE	O11-N11-C11	3.90	118.97	116.42
2	A	401	0UE	C39-N11-C11	-3.59	124.65	128.89
2	A	401	0UE	C22-C21-N21	3.52	125.47	121.07
2	A	401	0UE	C12-C11-N11	3.37	125.29	121.07
5	A	407	03S	O12-S10-O11	-2.62	102.64	114.80
2	A	401	0UE	O21-N21-C21	2.19	117.85	116.42

All (2) chirality outliers are listed below:

Mol	Chain	Res	Type	Atom
2	A	401	0UE	N21
2	A	401	0UE	N31

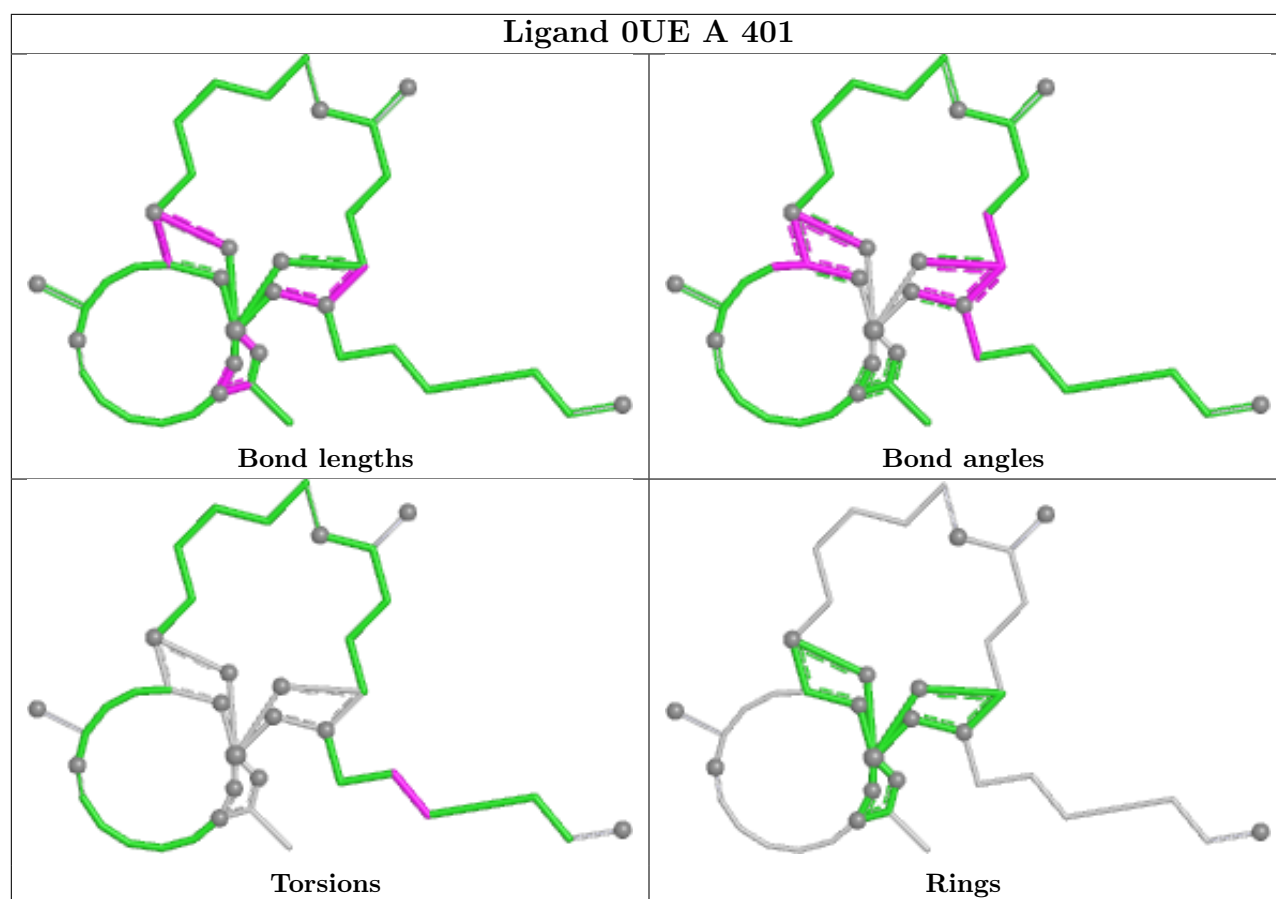
All (2) torsion outliers are listed below:

Mol	Chain	Res	Type	Atoms
4	A	406	EDO	O1-C1-C2-O2
2	A	401	0UE	C39-C40-C41-C42

There are no ring outliers.

No monomer is involved in short contacts.

The following is a two-dimensional graphical depiction of Mogul quality analysis of bond lengths, bond angles, torsion angles, and ring geometry for all instances of the Ligand of Interest. In addition, ligands with molecular weight > 250 and outliers as shown on the validation Tables will also be included. For torsion angles, if less than 5% of the Mogul distribution of torsion angles is within 10 degrees of the torsion angle in question, then that torsion angle is considered an outlier. Any bond that is central to one or more torsion angles identified as an outlier by Mogul will be highlighted in the graph. For rings, the root-mean-square deviation (RMSD) between the ring in question and similar rings identified by Mogul is calculated over all ring torsion angles. If the average RMSD is greater than 60 degrees and the minimal RMSD between the ring in question and any Mogul-identified rings is also greater than 60 degrees, then that ring is considered an outlier. The outliers are highlighted in purple. The color gray indicates Mogul did not find sufficient equivalents in the CSD to analyse the geometry.



4.7 Other polymers [i](#)

There are no such residues in this entry.

4.8 Polymer linkage issues [i](#)

There are no chain breaks in this entry.

5 Fit of model and data [i](#)

5.1 Protein, DNA and RNA chains [i](#)

In the following table, the column labelled ‘#RSRZ > 2’ contains the number (and percentage) of RSRZ outliers, followed by percent RSRZ outliers for the chain as percentile scores relative to all X-ray entries and entries of similar resolution. The OWAB column contains the minimum, median, 95th percentile and maximum values of the occupancy-weighted average B-factor per residue. The column labelled ‘Q < 0.9’ lists the number of (and percentage) of residues with an average occupancy less than 0.9.

Mol	Chain	Analysed	<RSRZ>	#RSRZ > 2		OWAB(Å ²)	Q < 0.9
1	A	279/283 (98%)	0.17	13 (4%)	36 44	5, 12, 26, 38	21 (7%)

All (13) RSRZ outliers are listed below:

Mol	Chain	Res	Type	RSRZ
1	A	310	ASN	3.9
1	A	255	ASP	3.6
1	A	258	GLY	3.2
1	A	265	LYS	3.0
1	A	260	ALA	3.0
1	A	267	TRP	2.7
1	A	263	GLU	2.6
1	A	266	LEU	2.5
1	A	256	LYS	2.5
1	A	238	GLU	2.4
1	A	259	SER	2.3
1	A	254	ASP	2.3
1	A	237	GLN	2.2

5.2 Non-standard residues in protein, DNA, RNA chains [i](#)

There are no non-standard protein/DNA/RNA residues in this entry.

5.3 Carbohydrates [i](#)

There are no oligosaccharides in this entry.

5.4 Ligands ⓘ

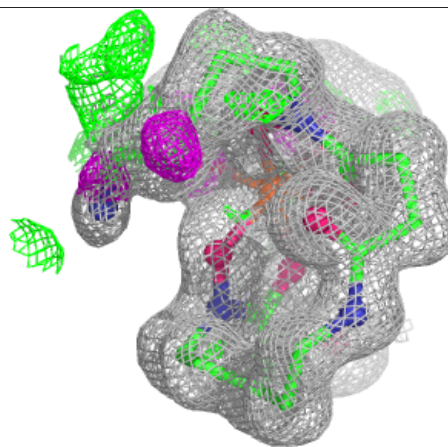
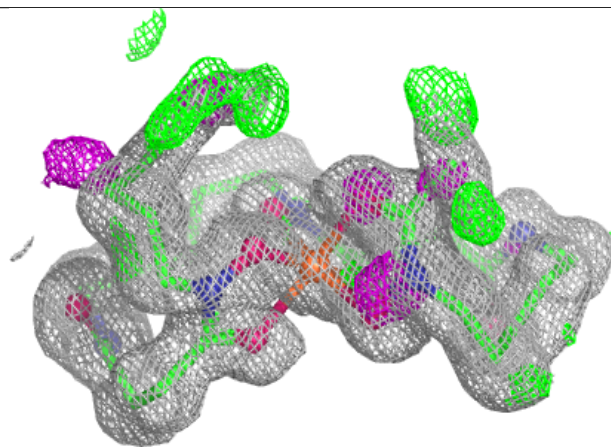
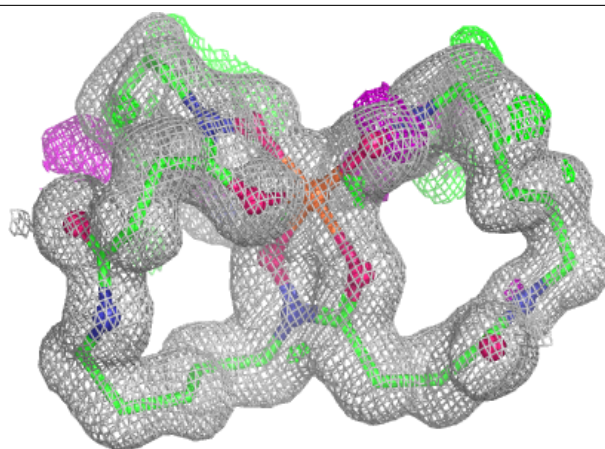
In the following table, the Atoms column lists the number of modelled atoms in the group and the number defined in the chemical component dictionary. The B-factors column lists the minimum, median, 95th percentile and maximum values of B factors of atoms in the group. The column labelled 'Q< 0.9' lists the number of atoms with occupancy less than 0.9.

Mol	Type	Chain	Res	Atoms	RSCC	RSR	B-factors(Å ²)	Q<0.9
4	EDO	A	406	4/4	0.70	0.19	33,33,35,36	0
3	ZN	A	405	1/1	0.72	0.23	39,39,39,39	1
6	NA	A	409	1/1	0.89	0.15	31,31,31,31	1
5	03S	A	407	5/5	0.90	0.13	31,31,32,34	5
6	NA	A	408	1/1	0.98	0.20	24,24,24,24	0
2	0UE	A	401	40/40	0.98	0.07	11,14,22,25	0
3	ZN	A	403[A]	1/1	1.00	0.02	14,14,14,14	1
3	ZN	A	403[B]	1/1	1.00	0.02	12,12,12,12	1
3	ZN	A	404	1/1	1.00	0.01	13,13,13,13	0
3	ZN	A	402	1/1	1.00	0.07	13,13,13,13	1

The following is a graphical depiction of the model fit to experimental electron density of all instances of the Ligand of Interest. In addition, ligands with molecular weight > 250 and outliers as shown on the geometry validation Tables will also be included. Each fit is shown from different orientation to approximate a three-dimensional view.

Electron density around 0UE A 401:

$2mF_o-DF_c$ (at 0.7 rmsd) in gray
 mF_o-DF_c (at 3 rmsd) in purple (negative)
and green (positive)



5.5 Other polymers [i](#)

There are no such residues in this entry.