



Full wwPDB X-ray Structure Validation Report ⓘ

Mar 8, 2026 – 12:47 PM UTC

PDB ID : 9BFV / pdb_00009bfv
Title : Tri-complex of Compound-23, KRAS G12C, and CypA
Authors : Tomlinson, A.C.A.; Knox, J.E.; Yano, J.K.
Deposited on : 2024-04-18
Resolution : 1.20 Å(reported)

This is a Full wwPDB X-ray Structure Validation Report for a publicly released PDB entry.

We welcome your comments at validation@mail.wwpdb.org

A user guide is available at

<https://www.wwpdb.org/validation/2017/XrayValidationReportHelp>

with specific help available everywhere you see the ⓘ symbol.

The types of validation reports are described at

<http://www.wwpdb.org/validation/2017/FAQs#types>.

The following versions of software and data (see [references ⓘ](#)) were used in the production of this report:

MolProbity : 4-5-2 with Phenix2.0
Mogul : 2022.3.0, CSD as543be (2022)
Xtriage (Phenix) : 2.0
EDS : 3.0
Buster-report : wwPDB partial adaption of 1.1.7 (2018)
Percentile statistics : 20250101.v01 (using entries in the PDB archive January 1st 2025)
CCP4 : 9.0.010 (Gargrove)
Density-Fitness : 1.0.12
Ideal geometry (proteins) : Engh & Huber (2001)
Ideal geometry (DNA, RNA) : Parkinson et al. (1996)
Validation Pipeline (wwPDB-VP) : 2.49

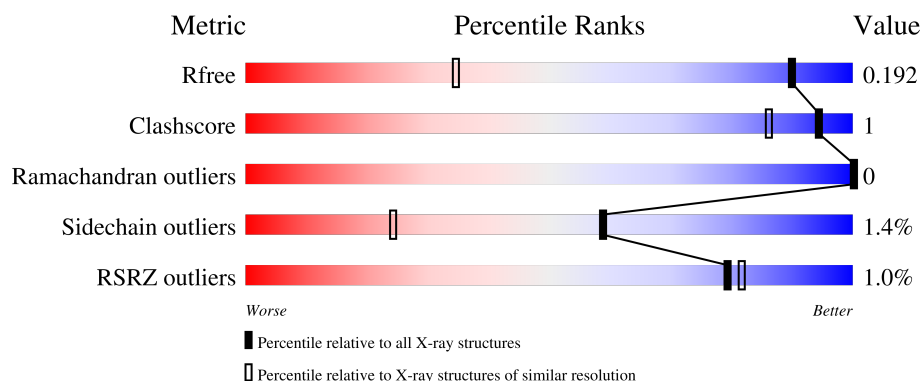
1 Overall quality at a glance

The following experimental techniques were used to determine the structure:

X-RAY DIFFRACTION

The reported resolution of this entry is 1.20 Å.

Percentile scores (ranging between 0-100) for global validation metrics of the entry are shown in the following graphic. The table shows the number of entries on which the scores are based.



Metric	Whole archive (#Entries)	Similar resolution (#Entries, resolution range(Å))
R_{free}	180053	1216 (1.20-1.20)
Clashscore	190562	1265 (1.20-1.20)
Ramachandran outliers	187476	1226 (1.20-1.20)
Sidechain outliers	187428	1226 (1.20-1.20)
RSRZ outliers	180081	1214 (1.20-1.20)

The table below summarises the geometric issues observed across the polymeric chains and their fit to the electron density. The red, orange, yellow and green segments of the lower bar indicate the fraction of residues that contain outliers for ≥ 3 , 2, 1 and 0 types of geometric quality criteria respectively. A grey segment represents the fraction of residues that are not modelled. The numeric value for each fraction is indicated below the corresponding segment, with a dot representing fractions $\leq 5\%$. The upper red bar (where present) indicates the fraction of residues that have poor fit to the electron density. The numeric value is given above the bar.

Mol	Chain	Length	Quality of chain
1	A	170	<div> <div>%</div> <div>92% 8%</div> </div>
1	B	170	<div> <div>2%</div> <div>96% .</div> </div>
2	C	166	<div> <div>98% ..</div> </div>
2	D	166	<div> <div>%</div> <div>94% 5% .</div> </div>

The following table lists non-polymeric compounds, carbohydrate monomers and non-standard

residues in protein, DNA, RNA chains that are outliers for geometric or electron-density-fit criteria:

Mol	Type	Chain	Res	Chirality	Geometry	Clashes	Electron density
4	A1AOV	A	202	X	-	-	-
4	A1AOV	B	202	X	-	-	-

2 Entry composition

There are 6 unique types of molecules in this entry. The entry contains 6463 atoms, of which 0 are hydrogens and 0 are deuteriums.

In the tables below, the ZeroOcc column contains the number of atoms modelled with zero occupancy, the AltConf column contains the number of residues with at least one atom in alternate conformation and the Trace column contains the number of residues modelled with at most 2 atoms.

- Molecule 1 is a protein called GTPase KRas.

Mol	Chain	Residues	Atoms					ZeroOcc	AltConf	Trace
1	A	170	Total	C	N	O	S	0	6	0
			1392	872	236	274	10			
1	B	170	Total	C	N	O	S	0	4	0
			1382	866	236	270	10			

There are 4 discrepancies between the modelled and reference sequences:

Chain	Residue	Modelled	Actual	Comment	Reference
A	0	SER	-	expression tag	UNP P01116
A	12	CYS	GLY	engineered mutation	UNP P01116
B	0	SER	-	expression tag	UNP P01116
B	12	CYS	GLY	engineered mutation	UNP P01116

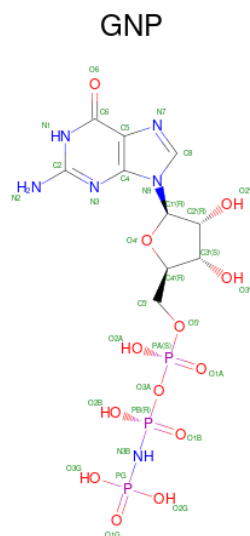
- Molecule 2 is a protein called Peptidyl-prolyl cis-trans isomerase A.

Mol	Chain	Residues	Atoms					ZeroOcc	AltConf	Trace
2	D	164	Total	C	N	O	S	0	5	0
			1287	818	223	236	10			
2	C	165	Total	C	N	O	S	0	2	0
			1276	808	219	239	10			

There are 2 discrepancies between the modelled and reference sequences:

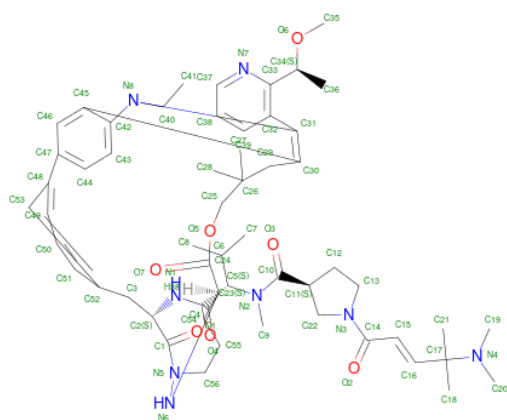
Chain	Residue	Modelled	Actual	Comment	Reference
D	0	SER	-	expression tag	UNP P62937
C	0	SER	-	expression tag	UNP P62937

- Molecule 3 is PHOSPHOAMINOPHOSPHONIC ACID-GUANYLATE ESTER (CCD ID: GNP) (formula: C₁₀H₁₇N₆O₁₃P₃).



Mol	Chain	Residues	Atoms					ZeroOcc	AltConf
3	A	1	Total 32	C 10	N 6	O 13	P 3	0	0
3	B	1	Total 32	C 10	N 6	O 13	P 3	0	0

- Molecule 4 is (3R)-1-[(2E)-4-(dimethylamino)-4-methylpent-2-enoyl]-N-[(2S)-1-{[(1P,8R,10R,14S,21M)-22-ethyl-21-{2-[(1R)-1-methoxyethyl]pyridin-3-yl}-18,18-dimethyl-9,15-dioxo-16-oxa-10,22,28-triazapentacyclo[18.5.2.1 2,6 .1 10,14 .0 23,27]nonacosa-1(25),2(29),3,5,20,23,26-heptaen-8-yl]amino}-3-methyl-1-oxobutan-2-yl]-N-methylpyrrolidine-3-carboxamide (non-preferred name) (CCD ID: A1AOV) (formula: C₅₆H₇₆N₈O₇) (labeled as "Ligand of Interest" by depositor).



Mol	Chain	Residues	Atoms				ZeroOcc	AltConf
4	A	1	Total	C	N	O	0	0
			71	56	8	7		
4	B	1	Total	C	N	O	0	0
			71	56	8	7		

- Molecule 5 is MAGNESIUM ION (CCD ID: MG) (formula: Mg).

Mol	Chain	Residues	Atoms		ZeroOcc	AltConf
5	A	1	Total	Mg	0	0
			1	1		
5	B	1	Total	Mg	0	0
			1	1		

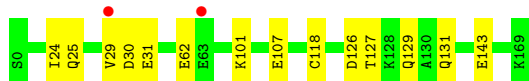
- Molecule 6 is water.

Mol	Chain	Residues	Atoms		ZeroOcc	AltConf
6	A	251	Total	O	0	7
			258	258		
6	B	196	Total	O	0	1
			197	197		
6	D	239	Total	O	0	3
			242	242		
6	C	220	Total	O	0	1
			221	221		

3 Residue-property plots [i](#)

These plots are drawn for all protein, RNA, DNA and oligosaccharide chains in the entry. The first graphic for a chain summarises the proportions of the various outlier classes displayed in the second graphic. The second graphic shows the sequence view annotated by issues in geometry and electron density. Residues are color-coded according to the number of geometric quality criteria for which they contain at least one outlier: green = 0, yellow = 1, orange = 2 and red = 3 or more. A red dot above a residue indicates a poor fit to the electron density ($RSRZ > 2$). Stretches of 2 or more consecutive residues without any outlier are shown as a green connector. Residues present in the sample, but not in the model, are shown in grey.

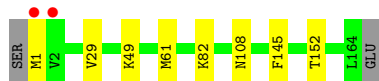
- Molecule 1: GTPase KRas



- Molecule 1: GTPase KRas



- Molecule 2: Peptidyl-prolyl cis-trans isomerase A



- Molecule 2: Peptidyl-prolyl cis-trans isomerase A



4 Data and refinement statistics

Property	Value	Source
Space group	P 1 21 1	Depositor
Cell constants a, b, c, α , β , γ	48.04Å 105.18Å 66.22Å 90.00° 90.86° 90.00°	Depositor
Resolution (Å)	48.03 – 1.20 48.03 – 1.20	Depositor EDS
% Data completeness (in resolution range)	96.8 (48.03-1.20) 96.8 (48.03-1.20)	Depositor EDS
R_{merge}	0.06	Depositor
R_{sym}	(Not available)	Depositor
$\langle I/\sigma(I) \rangle$ ¹	1.11 (at 1.20Å)	Xtriage
Refinement program	PHENIX 1.20.1_4487	Depositor
R, R_{free}	0.149 , 0.189 0.165 , 0.192	Depositor DCC
R_{free} test set	9857 reflections (4.98%)	wwPDB-VP
Wilson B-factor (Å ²)	15.7	Xtriage
Anisotropy	0.082	Xtriage
Bulk solvent k_{sol} (e/Å ³), B_{sol} (Å ²)	0.34 , 48.0	EDS
L-test for twinning ²	$\langle L \rangle = 0.48$, $\langle L^2 \rangle = 0.31$	Xtriage
Estimated twinning fraction	0.078 for h,-k,-l	Xtriage
F_o, F_c correlation	0.98	EDS
Total number of atoms	6463	wwPDB-VP
Average B, all atoms (Å ²)	24.0	wwPDB-VP

Xtriage's analysis on translational NCS is as follows: *The largest off-origin peak in the Patterson function is 4.33% of the height of the origin peak. No significant pseudotranslation is detected.*

¹Intensities estimated from amplitudes.

²Theoretical values of $\langle |L| \rangle$, $\langle L^2 \rangle$ for acentric reflections are 0.5, 0.333 respectively for untwinned datasets, and 0.375, 0.2 for perfectly twinned datasets.

5 Model quality [i](#)

5.1 Standard geometry [i](#)

Bond lengths and bond angles in the following residue types are not validated in this section: A1AOV, GNP, MG

The Z score for a bond length (or angle) is the number of standard deviations the observed value is removed from the expected value. A bond length (or angle) with $|Z| > 5$ is considered an outlier worth inspection. RMSZ is the root-mean-square of all Z scores of the bond lengths (or angles).

Mol	Chain	Bond lengths		Bond angles	
		RMSZ	$\# Z > 5$	RMSZ	$\# Z > 5$
1	A	0.32	0/1428	0.52	0/1923
1	B	0.30	0/1412	0.48	0/1899
2	C	0.28	0/1307	0.52	0/1751
2	D	0.28	0/1325	0.51	0/1775
All	All	0.30	0/5472	0.51	0/7348

There are no bond length outliers.

There are no bond angle outliers.

There are no chirality outliers.

There are no planarity outliers.

5.2 Too-close contacts [i](#)

In the following table, the Non-H and H(model) columns list the number of non-hydrogen atoms and hydrogen atoms in the chain respectively. The H(added) column lists the number of hydrogen atoms added and optimized by MolProbity. The Clashes column lists the number of clashes within the asymmetric unit, whereas Symm-Clashes lists symmetry-related clashes.

Mol	Chain	Non-H	H(model)	H(added)	Clashes	Symm-Clashes
1	A	1392	0	1382	6	0
1	B	1382	0	1377	3	0
2	C	1276	0	1248	0	0
2	D	1287	0	1274	5	0
3	A	32	0	13	0	0
3	B	32	0	13	0	0
4	A	71	0	0	0	0
4	B	71	0	0	0	0
5	A	1	0	0	0	0

Continued on next page...

Continued from previous page...

Mol	Chain	Non-H	H(model)	H(added)	Clashes	Symm-Clashes
5	B	1	0	0	0	0
6	A	258	0	0	0	0
6	B	197	0	0	0	0
6	C	221	0	0	0	0
6	D	242	0	0	2	0
All	All	6463	0	5307	14	0

The all-atom clashscore is defined as the number of clashes found per 1000 atoms (including hydrogen atoms). The all-atom clashscore for this structure is 1.

All (14) close contacts within the same asymmetric unit are listed below, sorted by their clash magnitude.

Atom-1	Atom-2	Interatomic distance (Å)	Clash overlap (Å)
1:A:29:VAL:HG12	1:A:31:GLU:H	1.64	0.61
1:A:126:ASP:HB2	1:A:129[B]:GLN:HG3	1.88	0.54
1:A:101:LYS:HE3	1:A:107:GLU:HA	1.92	0.52
1:B:101:LYS:HE3	1:B:107:GLU:HA	1.93	0.51
2:D:1:MET:HE3	2:D:1:MET:HA	1.97	0.47
2:D:82:LYS:HG3	6:D:215:HOH:O	2.14	0.46
2:D:49:LYS:NZ	6:D:202:HOH:O	2.49	0.45
1:B:79:LEU:HG	1:B:114:VAL:HG21	2.00	0.44
2:D:82:LYS:HA	2:D:108:ASN:O	2.19	0.43
1:B:5[B]:LYS:NZ	1:B:74:THR:HB	2.33	0.43
1:A:24:ILE:HG22	1:A:25:GLN:HG3	2.01	0.42
2:D:145:PHE:O	2:D:152:THR:HA	2.19	0.42
1:A:118[B]:CYS:SG	1:A:143:GLU:HB3	2.60	0.41
1:A:127:THR:O	1:A:131:GLN:HG3	2.22	0.40

There are no symmetry-related clashes.

5.3 Torsion angles [i](#)

5.3.1 Protein backbone [i](#)

In the following table, the Percentiles column shows the percent Ramachandran outliers of the chain as a percentile score with respect to all X-ray entries followed by that with respect to entries of similar resolution.

The Analysed column shows the number of residues for which the backbone conformation was analysed, and the total number of residues.

Mol	Chain	Analysed	Favoured	Allowed	Outliers	Percentiles	
1	A	174/170 (102%)	172 (99%)	2 (1%)	0	100	100
1	B	172/170 (101%)	167 (97%)	5 (3%)	0	100	100
2	C	165/166 (99%)	160 (97%)	5 (3%)	0	100	100
2	D	167/166 (101%)	162 (97%)	5 (3%)	0	100	100
All	All	678/672 (101%)	661 (98%)	17 (2%)	0	100	100

There are no Ramachandran outliers to report.

5.3.2 Protein sidechains ⓘ

In the following table, the Percentiles column shows the percent sidechain outliers of the chain as a percentile score with respect to all X-ray entries followed by that with respect to entries of similar resolution.

The Analysed column shows the number of residues for which the sidechain conformation was analysed, and the total number of residues.

Mol	Chain	Analysed	Rotameric	Outliers	Percentiles	
1	A	157/151 (104%)	154 (98%)	3 (2%)	50	13
1	B	155/151 (103%)	154 (99%)	1 (1%)	78	52
2	C	135/134 (101%)	132 (98%)	3 (2%)	45	10
2	D	137/134 (102%)	135 (98%)	2 (2%)	57	21
All	All	584/570 (102%)	575 (98%)	9 (2%)	59	21

All (9) residues with a non-rotameric sidechain are listed below:

Mol	Chain	Res	Type
1	A	30[A]	ASP
1	A	30[B]	ASP
1	A	62	GLU
1	B	142	ILE
2	D	29	VAL
2	D	61	MET
2	C	29	VAL
2	C	61	MET
2	C	165	GLU

Sometimes sidechains can be flipped to improve hydrogen bonding and reduce clashes. All (3) such sidechains are listed below:

Mol	Chain	Res	Type
1	A	95	HIS
1	A	166	HIS
1	B	22	GLN

5.3.3 RNA ⓘ

There are no RNA molecules in this entry.

5.4 Non-standard residues in protein, DNA, RNA chains ⓘ

There are no non-standard protein/DNA/RNA residues in this entry.

5.5 Carbohydrates ⓘ

There are no oligosaccharides in this entry.

5.6 Ligand geometry ⓘ

Of 6 ligands modelled in this entry, 2 are monoatomic - leaving 4 for Mogul analysis.

In the following table, the Counts columns list the number of bonds (or angles) for which Mogul statistics could be retrieved, the number of bonds (or angles) that are observed in the model and the number of bonds (or angles) that are defined in the Chemical Component Dictionary. The Link column lists molecule types, if any, to which the group is linked. The Z score for a bond length (or angle) is the number of standard deviations the observed value is removed from the expected value. A bond length (or angle) with $|Z| > 2$ is considered an outlier worth inspection. RMSZ is the root-mean-square of all Z scores of the bond lengths (or angles).

Mol	Type	Chain	Res	Link	Bond lengths			Bond angles		
					Counts	RMSZ	# $ Z > 2$	Counts	RMSZ	# $ Z > 2$
3	GNP	A	201	5	34,34,34	0.99	4 (11%)	47,54,54	0.81	1 (2%)
4	A1AOV	B	202	1	74,77,77	1.73	7 (9%)	92,114,114	1.20	12 (13%)
4	A1AOV	A	202	1	74,77,77	1.72	7 (9%)	92,114,114	1.11	9 (9%)
3	GNP	B	201	5	34,34,34	1.19	5 (14%)	47,54,54	0.84	1 (2%)

In the following table, the Chirals column lists the number of chiral outliers, the number of chiral centers analysed, the number of these observed in the model and the number defined in the Chemical Component Dictionary. Similar counts are reported in the Torsion and Rings columns. '-' means no outliers of that kind were identified.

Mol	Type	Chain	Res	Link	Chirals	Torsions	Rings
3	GNP	A	201	5	-	3/18/38/38	0/3/3/3
4	A1AOV	B	202	1	1/1/17/21	9/80/102/102	0/5/7/7
4	A1AOV	A	202	1	1/1/17/21	10/80/102/102	0/5/7/7
3	GNP	B	201	5	-	3/18/38/38	0/3/3/3

All (23) bond length outliers are listed below:

Mol	Chain	Res	Type	Atoms	Z	Observed(Å)	Ideal(Å)
4	A	202	A1AOV	N6-N5	-9.41	1.33	1.43
4	B	202	A1AOV	N6-N5	-9.13	1.33	1.43
4	B	202	A1AOV	C31-C30	7.09	1.49	1.37
4	A	202	A1AOV	C31-C30	6.82	1.48	1.37
4	A	202	A1AOV	O5-C24	4.72	1.43	1.33
4	B	202	A1AOV	O5-C24	4.53	1.42	1.33
4	A	202	A1AOV	C31-N8	-3.55	1.33	1.39
4	B	202	A1AOV	C31-N8	-3.52	1.33	1.39
3	B	201	GNP	PG-O1G	3.41	1.51	1.46
4	B	202	A1AOV	C42-N8	-3.23	1.33	1.39
4	A	202	A1AOV	C42-N8	-3.19	1.33	1.39
3	B	201	GNP	PB-O1B	2.98	1.50	1.46
3	B	201	GNP	PG-O3G	-2.89	1.49	1.56
3	A	201	GNP	PB-O1B	2.82	1.50	1.46
3	A	201	GNP	PG-O1G	2.64	1.50	1.46
4	B	202	A1AOV	C45-C30	-2.63	1.39	1.44
4	A	202	A1AOV	C45-C30	-2.55	1.39	1.44
3	B	201	GNP	PB-O2B	-2.54	1.50	1.56
3	B	201	GNP	PG-O2G	-2.47	1.50	1.56
3	A	201	GNP	PB-O2B	-2.23	1.50	1.56
3	A	201	GNP	PG-O2G	-2.20	1.51	1.56
4	A	202	A1AOV	C32-C33	-2.08	1.39	1.41
4	B	202	A1AOV	C32-C33	-2.03	1.39	1.41

All (23) bond angle outliers are listed below:

Mol	Chain	Res	Type	Atoms	Z	Observed(°)	Ideal(°)
3	B	201	GNP	O2B-PB-O1B	4.19	118.85	109.87
3	A	201	GNP	O2B-PB-O1B	3.97	118.37	109.87
4	B	202	A1AOV	C45-C30-C31	-3.33	104.37	107.12
4	A	202	A1AOV	C45-C30-C31	-3.31	104.38	107.12
4	B	202	A1AOV	C42-N8-C31	3.07	110.83	108.37
4	A	202	A1AOV	C16-C15-C14	2.92	130.40	119.03
4	B	202	A1AOV	C32-C31-C30	-2.82	125.40	128.34

Continued on next page...

Continued from previous page...

Mol	Chain	Res	Type	Atoms	Z	Observed(°)	Ideal(°)
4	B	202	A1AOV	C11-C10-N2	-2.71	115.62	119.30
4	A	202	A1AOV	C17-C16-C15	-2.69	116.88	125.79
4	A	202	A1AOV	C32-C31-C30	-2.63	125.60	128.34
4	B	202	A1AOV	O5-C24-O7	-2.58	119.42	124.14
4	A	202	A1AOV	C42-N8-C31	2.50	110.37	108.37
4	A	202	A1AOV	O5-C24-O7	-2.49	119.58	124.14
4	B	202	A1AOV	C37-N7-C33	2.48	121.85	116.92
4	B	202	A1AOV	C16-C15-C14	2.47	128.65	119.03
4	A	202	A1AOV	C11-C10-N2	-2.31	116.16	119.30
4	B	202	A1AOV	C13-N3-C22	2.29	115.06	112.38
4	B	202	A1AOV	C17-C16-C15	-2.26	118.30	125.79
4	A	202	A1AOV	C37-N7-C33	2.26	121.41	116.92
4	B	202	A1AOV	C43-C42-C45	-2.04	119.67	121.95
4	B	202	A1AOV	C41-C40-N8	-2.02	104.45	111.57
4	A	202	A1AOV	C13-N3-C22	2.01	114.73	112.38
4	B	202	A1AOV	O5-C24-C23	2.01	116.30	111.58

All (2) chirality outliers are listed below:

Mol	Chain	Res	Type	Atom
4	A	202	A1AOV	N5
4	B	202	A1AOV	N5

All (25) torsion outliers are listed below:

Mol	Chain	Res	Type	Atoms
3	A	201	GNP	PB-N3B-PG-O1G
3	A	201	GNP	PG-N3B-PB-O1B
3	A	201	GNP	PA-O3A-PB-O1B
3	B	201	GNP	PG-N3B-PB-O1B
3	B	201	GNP	PA-O3A-PB-O1B
4	A	202	A1AOV	C32-C33-C34-C36
4	A	202	A1AOV	C33-C34-O6-C35
4	B	202	A1AOV	C32-C33-C34-C36
4	A	202	A1AOV	N1-C2-C3-C52
4	B	202	A1AOV	O2-C14-C15-C16
4	B	202	A1AOV	N1-C2-C3-C52
4	A	202	A1AOV	C1-C2-C3-C52
4	A	202	A1AOV	O2-C14-C15-C16
4	A	202	A1AOV	C32-C33-C34-O6
4	B	202	A1AOV	C32-C33-C34-O6
4	B	202	A1AOV	N3-C14-C15-C16

Continued on next page...

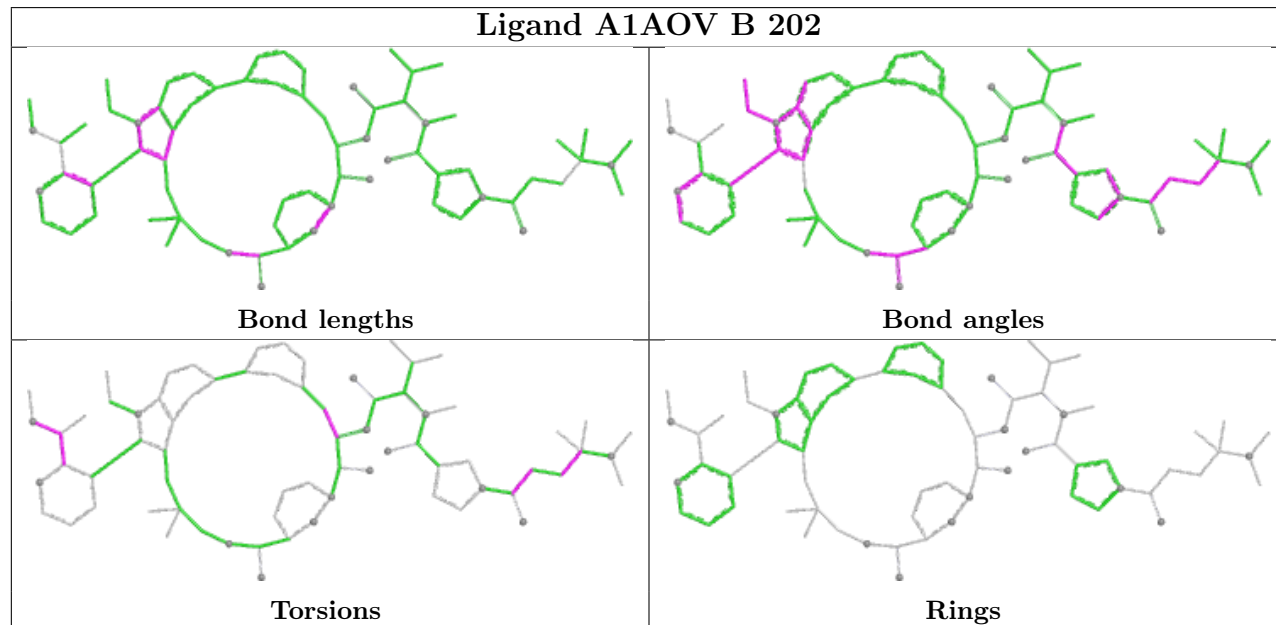
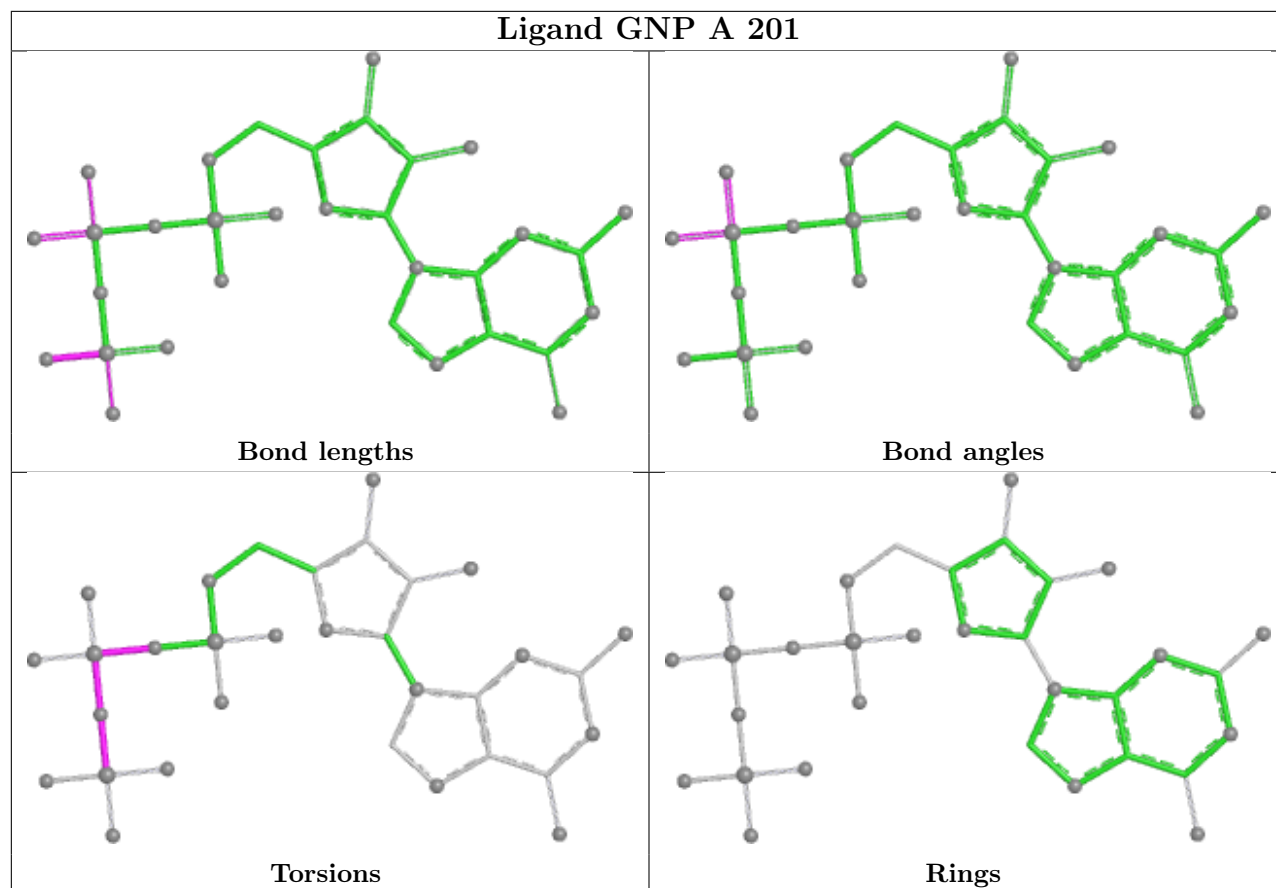
Continued from previous page...

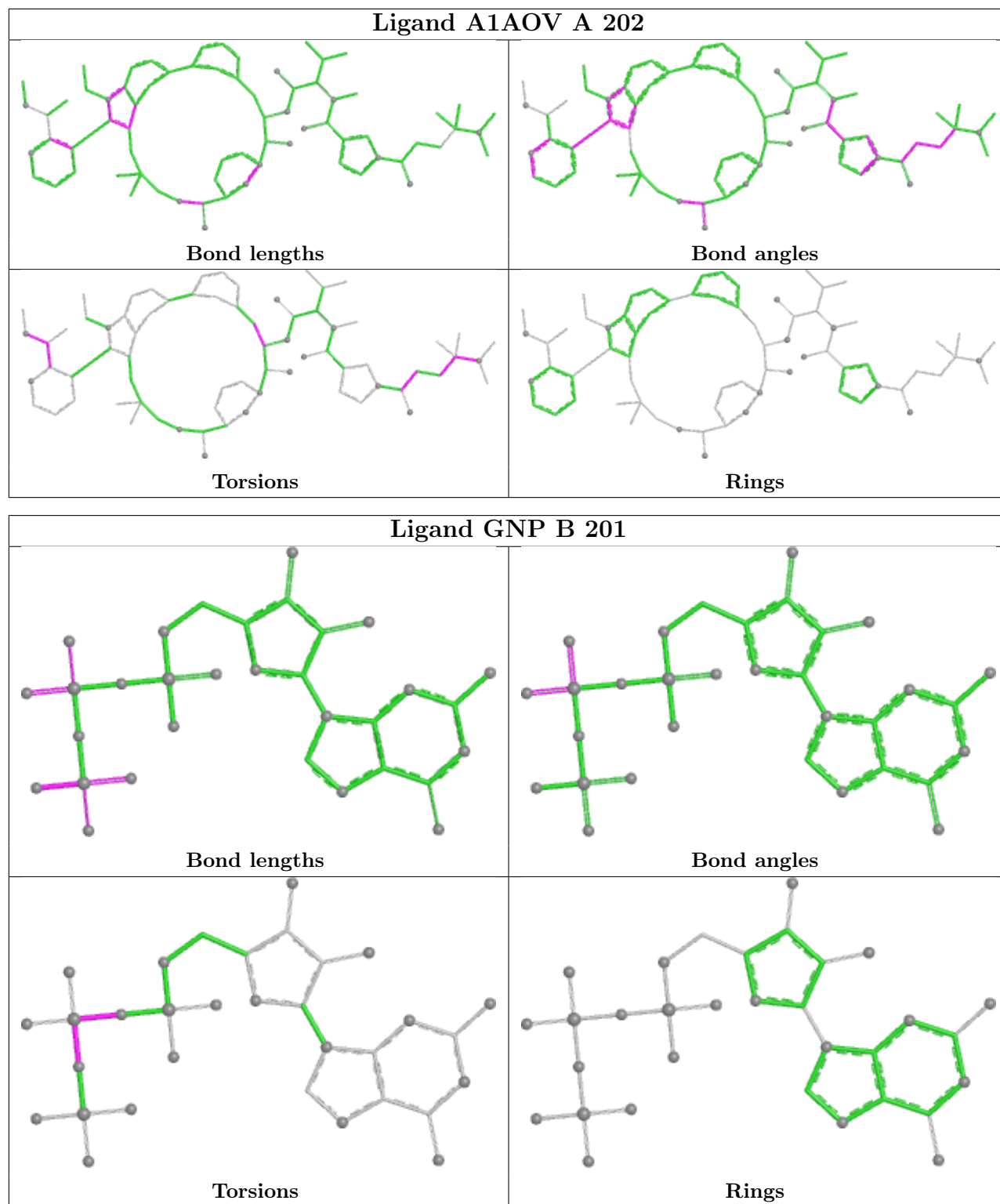
Mol	Chain	Res	Type	Atoms
4	B	202	A1AOV	C1-C2-C3-C52
4	A	202	A1AOV	N3-C14-C15-C16
4	A	202	A1AOV	C18-C17-N4-C20
4	B	202	A1AOV	C15-C16-C17-C18
4	B	202	A1AOV	C33-C34-O6-C35
3	B	201	GNP	PA-O3A-PB-O2B
4	A	202	A1AOV	C15-C16-C17-C18
4	B	202	A1AOV	C15-C16-C17-C21
4	A	202	A1AOV	C18-C17-N4-C19

There are no ring outliers.

No monomer is involved in short contacts.

The following is a two-dimensional graphical depiction of Mogul quality analysis of bond lengths, bond angles, torsion angles, and ring geometry for all instances of the Ligand of Interest. In addition, ligands with molecular weight > 250 and outliers as shown on the validation Tables will also be included. For torsion angles, if less than 5% of the Mogul distribution of torsion angles is within 10 degrees of the torsion angle in question, then that torsion angle is considered an outlier. Any bond that is central to one or more torsion angles identified as an outlier by Mogul will be highlighted in the graph. For rings, the root-mean-square deviation (RMSD) between the ring in question and similar rings identified by Mogul is calculated over all ring torsion angles. If the average RMSD is greater than 60 degrees and the minimal RMSD between the ring in question and any Mogul-identified rings is also greater than 60 degrees, then that ring is considered an outlier. The outliers are highlighted in purple. The color gray indicates Mogul did not find sufficient equivalents in the CSD to analyse the geometry.





5.7 Other polymers ⓘ

There are no such residues in this entry.

5.8 Polymer linkage issues ⓘ

There are no chain breaks in this entry.

6 Fit of model and data [i](#)

6.1 Protein, DNA and RNA chains [i](#)

In the following table, the column labelled ‘#RSRZ> 2’ contains the number (and percentage) of RSRZ outliers, followed by percent RSRZ outliers for the chain as percentile scores relative to all X-ray entries and entries of similar resolution. The OWAB column contains the minimum, median, 95th percentile and maximum values of the occupancy-weighted average B-factor per residue. The column labelled ‘Q< 0.9’ lists the number of (and percentage) of residues with an average occupancy less than 0.9.

Mol	Chain	Analysed	<RSRZ>	#RSRZ>2	OWAB(Å ²)	Q<0.9
1	A	170/170 (100%)	-0.03	2 (1%) 76 78	10, 19, 39, 61	6 (3%)
1	B	170/170 (100%)	0.24	3 (1%) 67 68	10, 23, 43, 49	4 (2%)
2	C	165/166 (99%)	-0.22	0 100 100	8, 18, 27, 60	2 (1%)
2	D	164/166 (98%)	-0.21	2 (1%) 76 78	7, 18, 29, 64	5 (3%)
All	All	669/672 (99%)	-0.05	7 (1%) 79 82	7, 19, 39, 64	17 (2%)

All (7) RSRZ outliers are listed below:

Mol	Chain	Res	Type	RSRZ
2	D	1	MET	2.8
1	B	0	SER	2.5
2	D	2	VAL	2.4
1	A	29	VAL	2.2
1	B	142	ILE	2.1
1	B	26	ASN	2.1
1	A	63	GLU	2.0

6.2 Non-standard residues in protein, DNA, RNA chains [i](#)

There are no non-standard protein/DNA/RNA residues in this entry.

6.3 Carbohydrates [i](#)

There are no oligosaccharides in this entry.

6.4 Ligands ⓘ

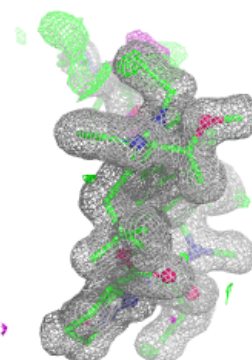
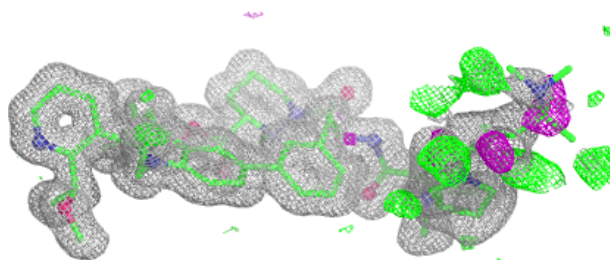
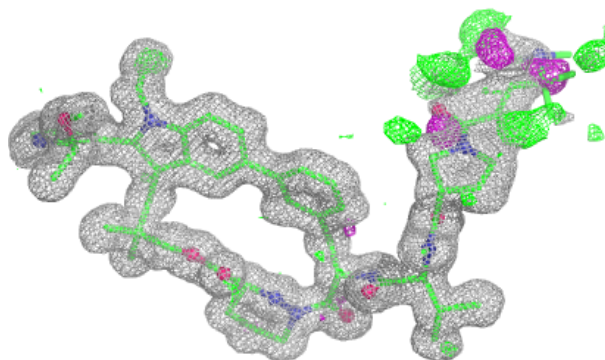
In the following table, the Atoms column lists the number of modelled atoms in the group and the number defined in the chemical component dictionary. The B-factors column lists the minimum, median, 95th percentile and maximum values of B factors of atoms in the group. The column labelled 'Q<0.9' lists the number of atoms with occupancy less than 0.9.

Mol	Type	Chain	Res	Atoms	RSCC	RSR	B-factors(Å ²)	Q<0.9
4	A1AOV	B	202	71/71	0.97	0.08	12,16,54,62	0
4	A1AOV	A	202	71/71	0.98	0.07	11,14,49,61	0
3	GNP	A	201	32/32	0.99	0.04	13,16,20,22	0
3	GNP	B	201	32/32	0.99	0.05	18,25,30,30	0
5	MG	B	203	1/1	0.99	0.03	18,18,18,18	0
5	MG	A	203	1/1	1.00	0.03	13,13,13,13	0

The following is a graphical depiction of the model fit to experimental electron density of all instances of the Ligand of Interest. In addition, ligands with molecular weight > 250 and outliers as shown on the geometry validation Tables will also be included. Each fit is shown from different orientation to approximate a three-dimensional view.

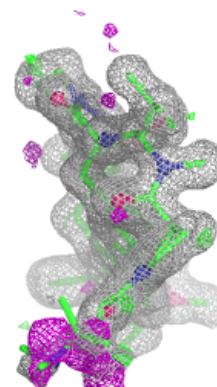
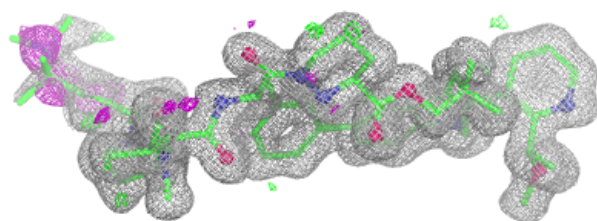
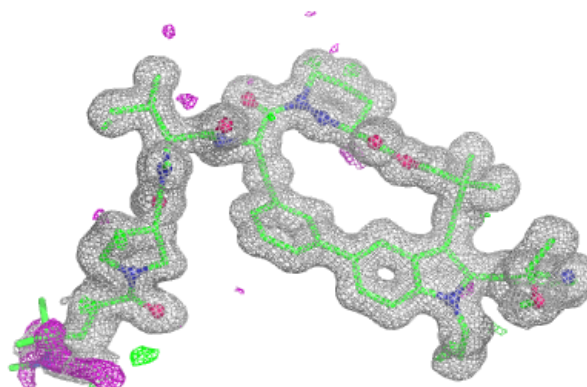
Electron density around A1AOV B 202:

2mF_o-DF_c (at 0.7 rmsd) in gray
mF_o-DF_c (at 3 rmsd) in purple (negative)
and green (positive)

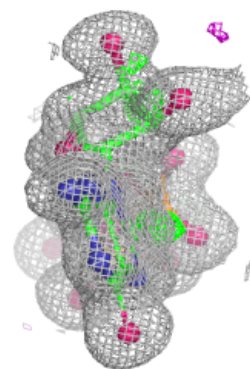
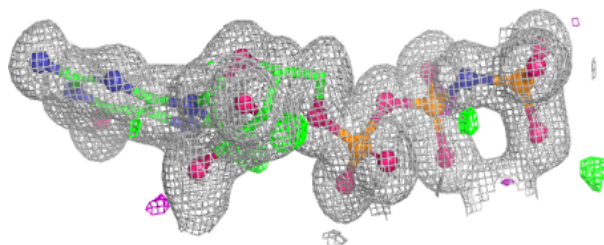
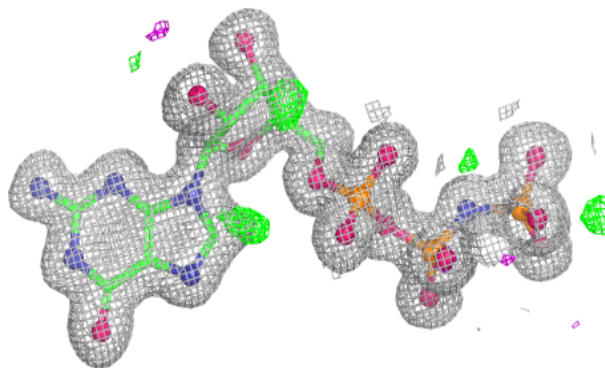


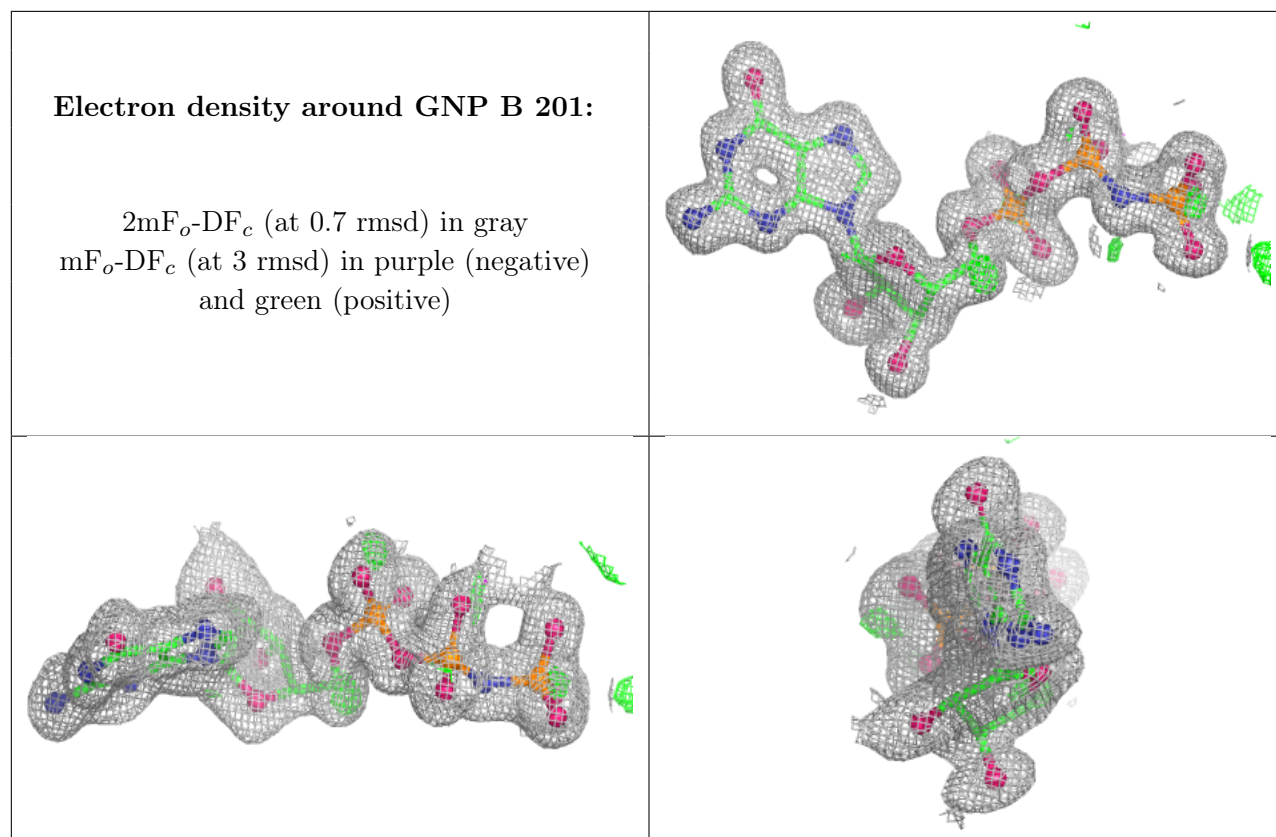
Electron density around A1AOV A 202:

$2mF_o-DF_c$ (at 0.7 rmsd) in gray
 mF_o-DF_c (at 3 rmsd) in purple (negative)
and green (positive)

**Electron density around GNP A 201:**

$2mF_o-DF_c$ (at 0.7 rmsd) in gray
 mF_o-DF_c (at 3 rmsd) in purple (negative)
and green (positive)





6.5 Other polymers [i](#)

There are no such residues in this entry.