



Full wwPDB EM Validation Report ⓘ

Apr 19, 2026 – 04:48 PM JST

PDB ID : 9LWJ / pdb_00009lwj
EMDB ID : EMD-63447
Title : The head-arm region of HBx-Smc5/6 ubiquitination complex
Authors : Tong, C.; Lili, D.; Hongshuai, L.; Jinhong, Z.; Qian, X.; Lanfeng, W.
Deposited on : 2025-02-15
Resolution : 7.19 Å(reported)

This is a Full wwPDB EM Validation Report for a publicly released PDB entry.

We welcome your comments at validation@mail.wwpdb.org

A user guide is available at

<https://www.wwpdb.org/validation/2017/EMValidationReportHelp>

with specific help available everywhere you see the ⓘ symbol.

The types of validation reports are described at

<http://www.wwpdb.org/validation/2017/FAQs#types>.

The following versions of software and data (see [references ⓘ](#)) were used in the production of this report:

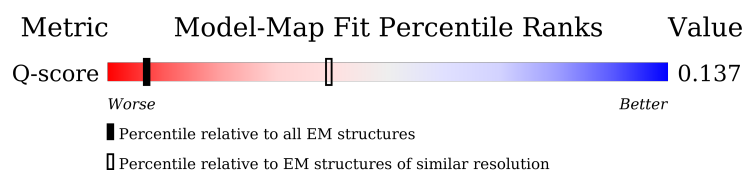
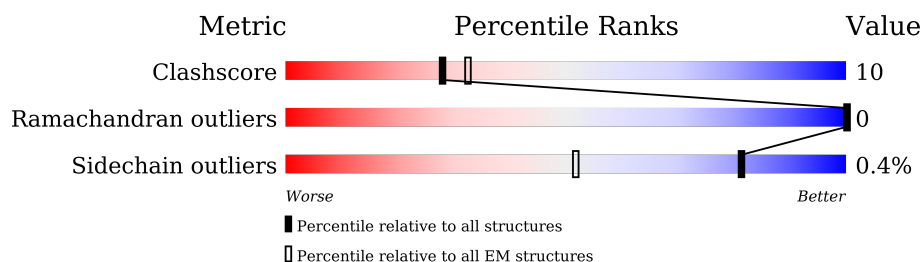
EMDB validation analysis : 0.0.1.dev132
MolProbity : 4-5-2 with Phenix2.0
Percentile statistics : 20250101.v01 (using entries in the PDB archive January 1st 2025)
EM percentile statistics : 202505.v01 (Using data in the EMDB archive up until May 2025)
MapQ : 1.9.13
Ideal geometry (proteins) : Engh & Huber (2001)
Ideal geometry (DNA, RNA) : Parkinson et al. (1996)
Validation Pipeline (wwPDB-VP) : 2.49

1 Overall quality at a glance

The following experimental techniques were used to determine the structure:
ELECTRON MICROSCOPY

The reported resolution of this entry is 7.19 Å.

Percentile scores (ranging between 0-100) for global validation metrics of the entry are shown in the following graphic. The table shows the number of entries on which the scores are based.



Metric	Whole archive (#Entries)	EM structures (#Entries)	Similar EM resolution (#Entries, resolution range(Å))
Clashscore	229148	23984	-
Ramachandran outliers	224038	23583	-
Sidechain outliers	223484	23102	-
Q-score	-	25397	412 (6.70 - 7.64)

The table below summarises the geometric issues observed across the polymeric chains and their fit to the map. The red, orange, yellow and green segments of the bar indicate the fraction of residues that contain outliers for ≥ 3 , 2, 1 and 0 types of geometric quality criteria respectively. A grey segment represents the fraction of residues that are not modelled. The numeric value for each fraction is indicated below the corresponding segment, with a dot representing fractions $\leq 5\%$. The upper red bar (where present) indicates the fraction of residues that have poor fit to the EM map (all-atom inclusion $< 40\%$). The numeric value is given above the bar.

Mol	Chain	Length	Quality of chain
1	A	1091	
2	B	1140	
3	C	154	
4	D	333	

Continued on next page...

Continued from previous page...

Mol	Chain	Length	Quality of chain
5	E	304	<div><div></div><div>56%15%29%</div></div>
6	F	266	<div><div></div><div>70%20%11%</div></div>
7	G	760	<div><div></div><div>14%75%19%5%</div></div>
8	H	108	<div><div></div><div>8%66%18%17%</div></div>
9	I	1101	<div><div></div><div>46%15%39%</div></div>
10	J	247	<div><div></div><div>9%42%12%46%</div></div>

2 Entry composition

There are 11 unique types of molecules in this entry. The entry contains 33722 atoms, of which 0 are hydrogens and 0 are deuteriums.

In the tables below, the AltConf column contains the number of residues with at least one atom in alternate conformation and the Trace column contains the number of residues modelled with at most 2 atoms.

- Molecule 1 is a protein called Structural maintenance of chromosomes protein 6.

Mol	Chain	Residues	Atoms					AltConf	Trace
1	A	656	Total	C	N	O	S	0	0
			5310	3303	951	1022	34		

- Molecule 2 is a protein called DNA damage-binding protein 1.

Mol	Chain	Residues	Atoms					AltConf	Trace
2	B	1140	Total	C	N	O	S	0	0
			8918	5642	1503	1724	49		

- Molecule 3 is a protein called Protein X.

Mol	Chain	Residues	Atoms					AltConf	Trace
3	C	103	Total	C	N	O	S	0	0
			793	504	143	139	7		

- Molecule 4 is a protein called EP300-interacting inhibitor of differentiation 3.

Mol	Chain	Residues	Atoms					AltConf	Trace
4	D	225	Total	C	N	O	S	0	0
			1840	1176	307	348	9		

- Molecule 5 is a protein called Non-structural maintenance of chromosomes element 3 homolog.

Mol	Chain	Residues	Atoms					AltConf	Trace
5	E	215	Total	C	N	O	S	0	0
			1787	1154	306	322	5		

- Molecule 6 is a protein called Non-structural maintenance of chromosomes element 1 homolog.

Mol	Chain	Residues	Atoms					AltConf	Trace
6	F	237	Total	C	N	O	S	0	0
			1928	1220	333	361	14		

- Molecule 7 is a protein called Cullin-4A.

Mol	Chain	Residues	Atoms					AltConf	Trace
7	G	719	Total	C	N	O	S	0	0
			5898	3753	1023	1088	34		

There is a discrepancy between the modelled and reference sequences:

Chain	Residue	Modelled	Actual	Comment	Reference
G	760	GLY	-	expression tag	UNP Q13619

- Molecule 8 is a protein called E3 ubiquitin-protein ligase RBX1.

Mol	Chain	Residues	Atoms					AltConf	Trace
8	H	90	Total	C	N	O	S	0	0
			746	472	137	128	9		

- Molecule 9 is a protein called Structural maintenance of chromosomes protein 5.

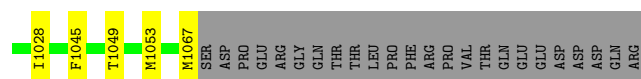
Mol	Chain	Residues	Atoms					AltConf	Trace
9	I	667	Total	C	N	O	S	0	0
			5443	3411	953	1046	33		

- Molecule 10 is a protein called E3 SUMO-protein ligase NSE2.

Mol	Chain	Residues	Atoms					AltConf	Trace
10	J	133	Total	C	N	O	S	0	0
			1053	660	178	210	5		

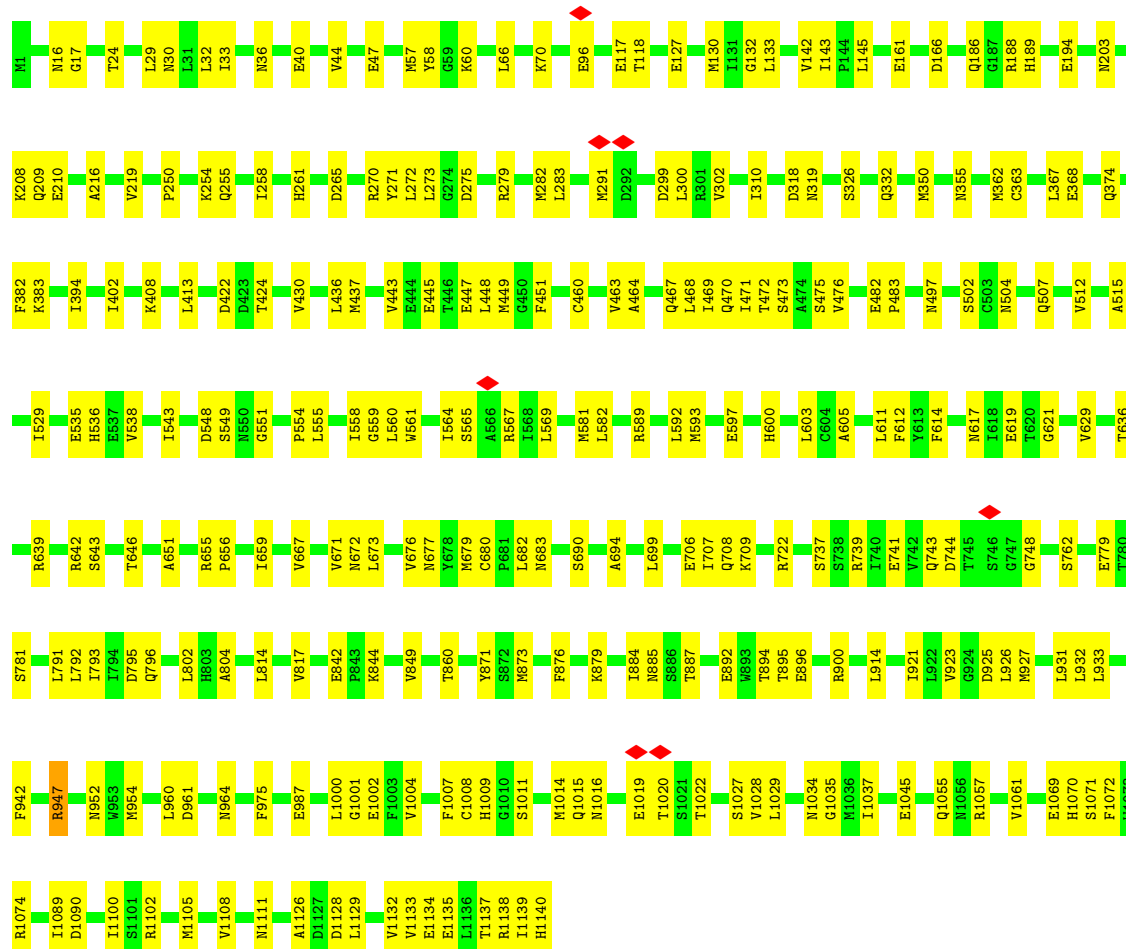
- Molecule 11 is ZINC ION (CCD ID: ZN) (formula: Zn) (labeled as "Ligand of Interest" by depositor).

Mol	Chain	Residues	Atoms		AltConf
11	C	1	Total	Zn	0
			1	1	
11	F	2	Total	Zn	0
			2	2	
11	H	3	Total	Zn	0
			3	3	



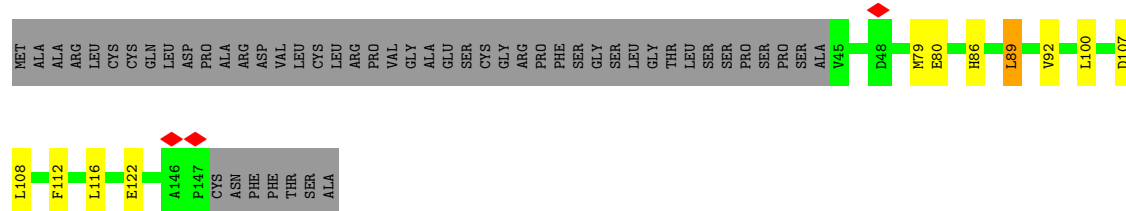
• Molecule 2: DNA damage-binding protein 1

Chain B: 77% 23%



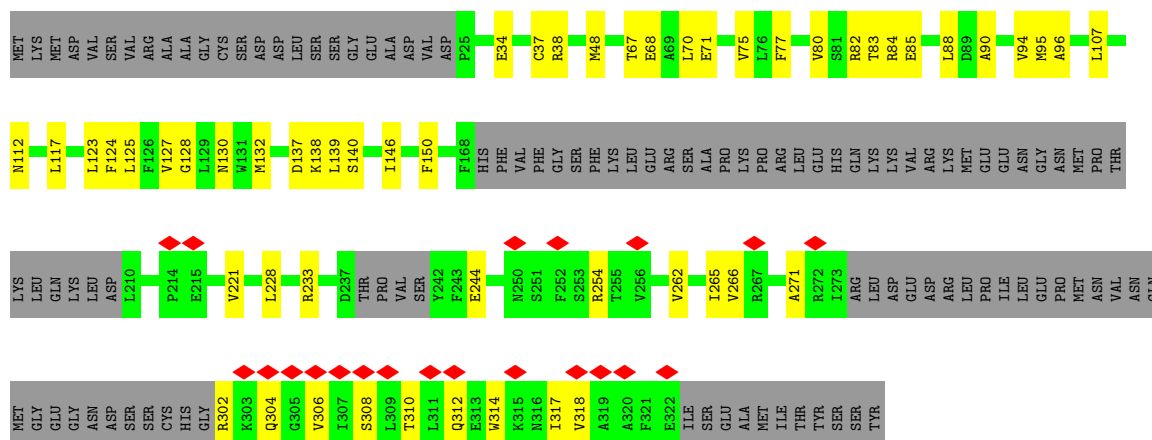
• Molecule 3: Protein X

Chain C: 60% 6% 33%



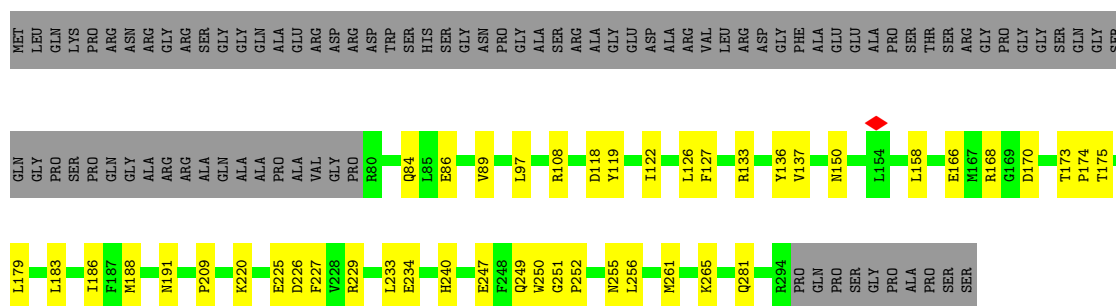
• Molecule 4: EP300-interacting inhibitor of differentiation 3

Chain D: 6% 51% 16% 32%



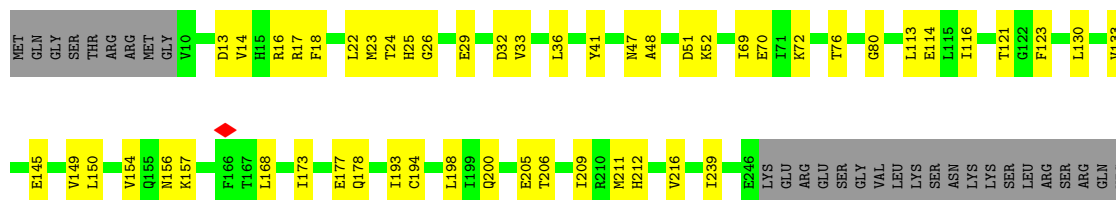
- Molecule 5: Non-structural maintenance of chromosomes element 3 homolog

Chain E: 56% 15% 29%



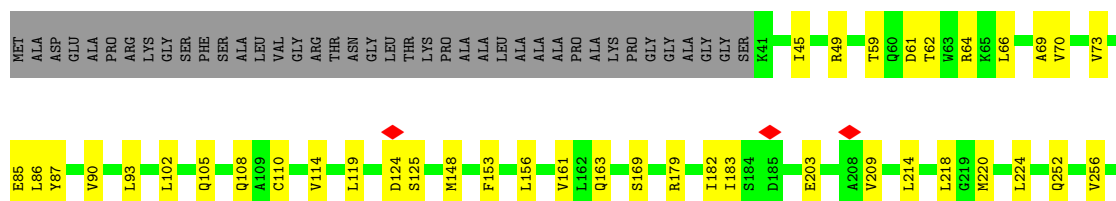
- Molecule 6: Non-structural maintenance of chromosomes element 1 homolog

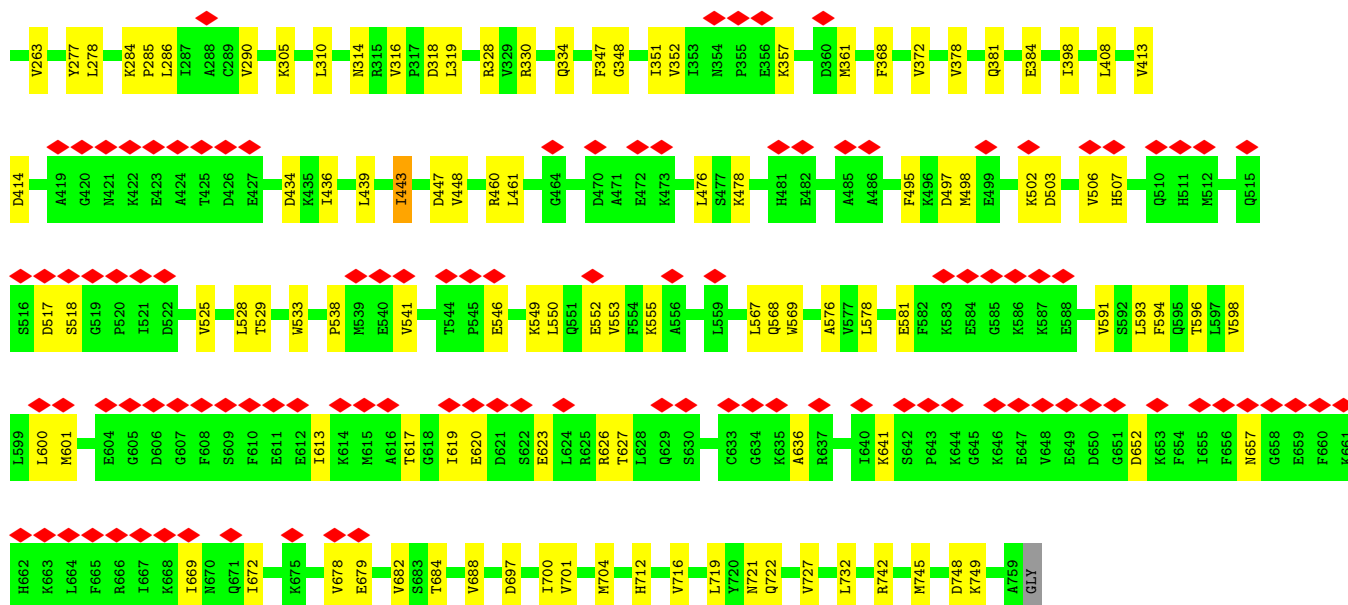
Chain F: 70% 20% 11%



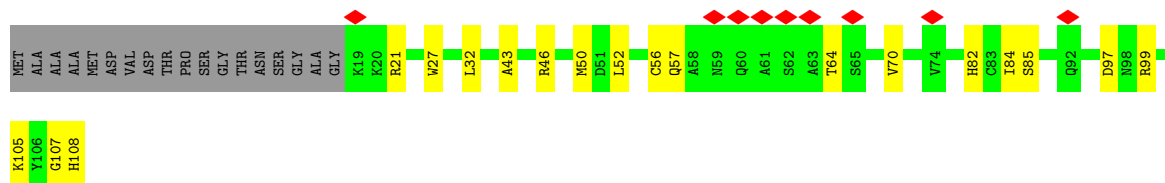
- Molecule 7: Cullin-4A

Chain G: 14% 75% 19% 5%

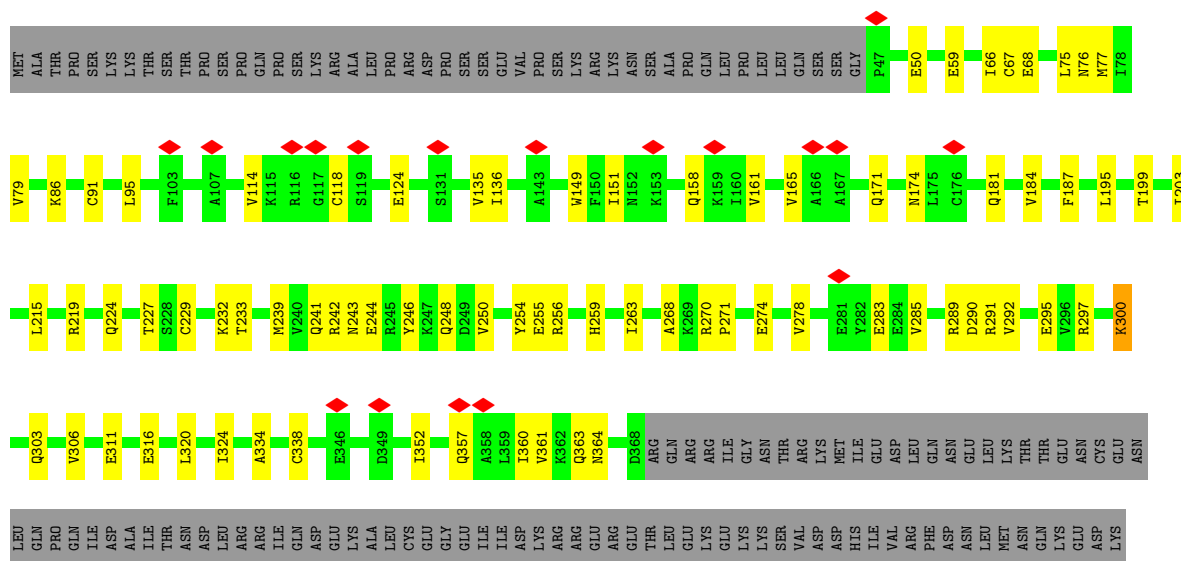




• Molecule 8: E3 ubiquitin-protein ligase RBX1



• Molecule 9: Structural maintenance of chromosomes protein 5



4 Experimental information

Property	Value	Source
EM reconstruction method	SINGLE PARTICLE	Depositor
Imposed symmetry	POINT, Not provided	
Number of particles used	20327	Depositor
Resolution determination method	FSC 0.143 CUT-OFF	Depositor
CTF correction method	NONE	Depositor
Microscope	TFS KRIOS	Depositor
Voltage (kV)	300	Depositor
Electron dose ($e^-/\text{\AA}^2$)	48.5	Depositor
Minimum defocus (nm)	1200	Depositor
Maximum defocus (nm)	2200	Depositor
Magnification	Not provided	
Image detector	TFS FALCON 4i (4k x 4k)	Depositor
Maximum map value	7.717	Depositor
Minimum map value	-3.440	Depositor
Average map value	-0.001	Depositor
Map value standard deviation	0.135	Depositor
Recommended contour level	1	Depositor
Map size (\AA)	1043.84, 1043.84, 1043.84	wwPDB
Map dimensions	560, 560, 560	wwPDB
Map angles ($^\circ$)	90.0, 90.0, 90.0	wwPDB
Pixel spacing (\AA)	1.864, 1.864, 1.864	Depositor

5 Model quality [i](#)

5.1 Standard geometry [i](#)

Bond lengths and bond angles in the following residue types are not validated in this section: ZN

The Z score for a bond length (or angle) is the number of standard deviations the observed value is removed from the expected value. A bond length (or angle) with $|Z| > 5$ is considered an outlier worth inspection. RMSZ is the root-mean-square of all Z scores of the bond lengths (or angles).

Mol	Chain	Bond lengths		Bond angles	
		RMSZ	$\# Z > 5$	RMSZ	$\# Z > 5$
1	A	0.11	0/5376	0.24	0/7182
2	B	0.13	0/9083	0.27	0/12306
3	C	0.38	0/811	0.53	0/1097
4	D	0.26	0/1874	0.38	0/2522
5	E	0.14	0/1827	0.31	0/2465
6	F	0.19	0/1966	0.30	0/2656
7	G	0.12	0/6006	0.25	0/8068
8	H	0.39	0/768	0.54	2/1040 (0.2%)
9	I	0.14	0/5521	0.31	1/7415 (0.0%)
10	J	0.10	0/1066	0.19	0/1429
All	All	0.16	0/34298	0.29	3/46180 (0.0%)

There are no bond length outliers.

All (3) bond angle outliers are listed below:

Mol	Chain	Res	Type	Atoms	Z	Observed(°)	Ideal(°)
9	I	818	GLU	CA-C-O	-6.11	114.02	120.80
8	H	50	MET	CA-C-N	-5.04	116.29	122.84
8	H	50	MET	C-N-CA	-5.04	116.29	122.84

There are no chirality outliers.

There are no planarity outliers.

5.2 Too-close contacts [i](#)

In the following table, the Non-H and H(model) columns list the number of non-hydrogen atoms and hydrogen atoms in the chain respectively. The H(added) column lists the number of hydrogen atoms added and optimized by MolProbity. The Clashes column lists the number of clashes within the asymmetric unit, whereas Symm-Clashes lists symmetry-related clashes.

Mol	Chain	Non-H	H(model)	H(added)	Clashes	Symm-Clashes
1	A	5310	0	5357	95	0
2	B	8918	0	8879	200	0
3	C	793	0	804	8	0
4	D	1840	0	1801	39	0
5	E	1787	0	1824	39	0
6	F	1928	0	1910	38	0
7	G	5898	0	5977	107	0
8	H	746	0	699	15	0
9	I	5443	0	5506	116	0
10	J	1053	0	1053	21	0
11	C	1	0	0	0	0
11	F	2	0	0	0	0
11	H	3	0	0	0	0
All	All	33722	0	33810	645	0

The all-atom clashscore is defined as the number of clashes found per 1000 atoms (including hydrogen atoms). The all-atom clashscore for this structure is 10.

All (645) close contacts within the same asymmetric unit are listed below, sorted by their clash magnitude.

Atom-1	Atom-2	Interatomic distance (Å)	Clash overlap (Å)
7:G:517:ASP:OD2	7:G:550:LEU:CD2	2.26	0.84
7:G:700:ILE:HD11	7:G:719:LEU:HD11	1.64	0.79
2:B:671:VAL:HG12	2:B:673:LEU:HD23	1.65	0.79
7:G:183:ILE:HD13	7:G:224:LEU:HD21	1.65	0.78
7:G:719:LEU:HD13	7:G:732:LEU:HD22	1.65	0.78
2:B:362:MET:HE2	2:B:1029:LEU:HD11	1.65	0.78
5:E:188:MET:SD	5:E:281:GLN:NE2	2.57	0.77
9:I:794:GLN:O	9:I:798:THR:HG23	1.84	0.76
10:J:27:LEU:HD11	10:J:75:LEU:HD22	1.67	0.76
7:G:626:ARG:NH2	7:G:679:GLU:OE2	2.20	0.75
2:B:743:GLN:NE2	2:B:781:SER:O	2.20	0.74
1:A:342:ARG:NH2	1:A:345:GLU:OE1	2.21	0.74
7:G:434:ASP:OD1	7:G:478:LYS:NZ	2.21	0.74
2:B:597:GLU:OE1	2:B:597:GLU:N	2.22	0.72
2:B:70:LYS:NZ	2:B:127:GLU:O	2.22	0.72
2:B:655:ARG:NH2	2:B:1019:GLU:OE1	2.23	0.71
4:D:68:GLU:OE1	4:D:68:GLU:N	2.23	0.71
4:D:254:ARG:NH1	9:I:1062:TYR:OH	2.23	0.71
2:B:933:LEU:HD11	2:B:942:PHE:HB3	1.73	0.71
7:G:330:ARG:O	7:G:334:GLN:NE2	2.23	0.71
1:A:284:ASN:ND2	1:A:859:GLU:OE1	2.24	0.71

Continued on next page...

Continued from previous page...

Atom-1	Atom-2	Interatomic distance (Å)	Clash overlap (Å)
9:I:892:GLU:OE2	9:I:896:ARG:NH1	2.24	0.71
2:B:706:GLU:OE1	2:B:707:ILE:N	2.24	0.71
1:A:49:GLU:N	1:A:49:GLU:OE1	2.23	0.71
1:A:307:LEU:O	1:A:311:MET:HG2	1.90	0.70
1:A:335:ILE:HD12	1:A:790:LEU:HD22	1.72	0.70
5:E:84:GLN:OE1	5:E:84:GLN:N	2.25	0.70
9:I:295:GLU:N	9:I:295:GLU:OE1	2.25	0.70
1:A:227:MET:HE1	1:A:923:MET:SD	2.30	0.70
7:G:85:GLU:N	7:G:85:GLU:OE1	2.25	0.69
2:B:1137:THR:O	2:B:1140:HIS:ND1	2.24	0.69
2:B:1022:THR:HG21	2:B:1139:ILE:HD11	1.73	0.69
9:I:290:ASP:OD2	9:I:291:ARG:NH2	2.25	0.69
7:G:517:ASP:OD2	7:G:550:LEU:HD21	1.93	0.69
2:B:469:ILE:HD11	2:B:476:VAL:HG22	1.74	0.69
6:F:72:LYS:NZ	6:F:177:GLU:OE2	2.25	0.69
6:F:200:GLN:OE1	6:F:200:GLN:N	2.26	0.69
2:B:473:SER:O	2:B:497:ASN:ND2	2.25	0.69
2:B:1011:SER:O	2:B:1015:GLN:NE2	2.26	0.68
2:B:565:SER:OG	2:B:567:ARG:NH1	2.27	0.68
2:B:892:GLU:OE2	2:B:900:ARG:NH2	2.27	0.68
4:D:34:GLU:OE2	4:D:38:ARG:NE	2.27	0.68
5:E:226:ASP:OD1	5:E:229:ARG:NH2	2.28	0.67
7:G:105:GLN:OE1	7:G:108:GLN:NE2	2.28	0.67
2:B:402:ILE:HG23	7:G:45:ILE:HD11	1.77	0.67
7:G:517:ASP:OD2	7:G:550:LEU:HD23	1.93	0.67
5:E:251:GLY:O	5:E:255:ASN:ND2	2.28	0.67
5:E:281:GLN:N	5:E:281:GLN:OE1	2.27	0.67
9:I:283:GLU:OE1	9:I:283:GLU:N	2.27	0.67
9:I:263:ILE:HD11	9:I:875:GLU:HB2	1.77	0.67
9:I:733:ARG:NH1	9:I:736:SER:OG	2.28	0.67
2:B:445:GLU:OE2	7:G:49:ARG:N	2.28	0.66
2:B:166:ASP:OD2	2:B:219:VAL:N	2.28	0.66
2:B:925:ASP:OD1	2:B:926:LEU:N	2.29	0.66
2:B:558:ILE:HG22	2:B:569:LEU:HD23	1.78	0.65
2:B:208:LYS:NZ	2:B:209:GLN:O	2.30	0.65
7:G:66:LEU:HD11	7:G:153:PHE:CZ	2.32	0.65
1:A:264:LEU:HD21	1:A:881:GLU:HB2	1.79	0.65
9:I:1008:GLN:N	9:I:1008:GLN:OE1	2.30	0.65
2:B:814:LEU:HD12	2:B:871:TYR:HD1	1.61	0.65
4:D:83:THR:OG1	4:D:84:ARG:NH1	2.30	0.65
1:A:264:LEU:HD21	1:A:881:GLU:CB	2.26	0.64

Continued on next page...

Continued from previous page...

Atom-1	Atom-2	Interatomic distance (Å)	Clash overlap (Å)
2:B:258:ILE:HD13	2:B:275:ASP:OD1	1.97	0.64
7:G:361:MET:HE2	7:G:408:LEU:CD1	2.27	0.64
2:B:952:ASN:OD1	2:B:954:MET:HE3	1.98	0.64
2:B:1057:ARG:NH2	2:B:1111:ASN:O	2.30	0.64
9:I:867:GLU:N	9:I:867:GLU:OE1	2.30	0.64
9:I:363:GLN:OE1	9:I:363:GLN:N	2.30	0.64
9:I:741:GLU:O	9:I:745:GLN:NE2	2.30	0.64
1:A:1018:ASP:OD1	1:A:1019:VAL:N	2.30	0.64
9:I:746:LYS:O	9:I:750:VAL:HG23	1.98	0.64
1:A:794:ALA:O	1:A:798:LYS:N	2.29	0.63
1:A:365:VAL:HG22	9:I:357:GLN:O	1.99	0.63
2:B:779:GLU:N	2:B:779:GLU:OE1	2.30	0.63
2:B:954:MET:HA	2:B:954:MET:HE2	1.81	0.63
2:B:1102:ARG:NH1	2:B:1105:MET:SD	2.71	0.63
9:I:263:ILE:HD12	9:I:872:LEU:HD12	1.80	0.63
1:A:372:ASN:OD1	1:A:373:GLU:N	2.31	0.63
4:D:221:VAL:HG23	4:D:228:LEU:HD13	1.80	0.63
9:I:316:GLU:N	9:I:316:GLU:OE1	2.31	0.63
9:I:300:LYS:HD2	9:I:798:THR:HG22	1.80	0.62
1:A:756:GLU:N	1:A:756:GLU:OE1	2.33	0.62
8:H:70:VAL:HG23	8:H:108:HIS:CE1	2.33	0.62
6:F:150:LEU:O	6:F:154:VAL:HG23	1.99	0.62
2:B:656:PRO:HG3	2:B:676:VAL:HG12	1.82	0.62
6:F:29:GLU:O	6:F:33:VAL:HG23	1.99	0.62
1:A:42:ALA:N	1:A:69:SER:HG	1.98	0.61
2:B:394:ILE:HD11	2:B:671:VAL:HG22	1.82	0.61
4:D:90:ALA:O	4:D:94:VAL:HG23	2.00	0.61
2:B:60:LYS:NZ	2:B:1001:GLY:O	2.32	0.61
5:E:174:PRO:O	5:E:175:THR:OG1	2.17	0.61
8:H:43:ALA:O	8:H:46:ARG:NH1	2.33	0.61
2:B:1004:VAL:HG21	2:B:1007:PHE:HE1	1.65	0.61
7:G:328:ARG:O	7:G:330:ARG:NH2	2.33	0.61
4:D:233:ARG:NH1	9:I:67:CYS:SG	2.74	0.61
9:I:255:GLU:O	9:I:259:HIS:ND1	2.32	0.61
2:B:1055:GLN:NE2	2:B:1090:ASP:OD1	2.34	0.61
9:I:158:GLN:OE1	9:I:158:GLN:N	2.34	0.61
9:I:239:MET:HB3	9:I:900:ILE:HD11	1.82	0.61
9:I:181:GLN:O	9:I:184:VAL:HG22	2.01	0.61
2:B:987:GLU:OE1	2:B:987:GLU:N	2.33	0.60
5:E:234:GLU:N	5:E:234:GLU:OE1	2.34	0.60
6:F:47:ASN:OD1	6:F:48:ALA:N	2.33	0.60

Continued on next page...

Continued from previous page...

Atom-1	Atom-2	Interatomic distance (Å)	Clash overlap (Å)
2:B:273:LEU:HD23	2:B:283:LEU:HD23	1.82	0.60
4:D:271:ALA:O	4:D:302:ARG:NH1	2.34	0.60
1:A:292:ALA:O	1:A:296:ASN:ND2	2.34	0.60
9:I:303:GLN:O	9:I:306:VAL:HG22	2.01	0.60
9:I:772:LEU:HD13	10:J:104:VAL:HG21	1.83	0.60
9:I:947:PHE:O	9:I:951:GLN:N	2.35	0.60
7:G:93:LEU:HD22	7:G:102:LEU:HD22	1.84	0.60
2:B:642:ARG:NH1	2:B:643:SER:O	2.35	0.60
9:I:285:VAL:HG22	9:I:845:THR:HG21	1.83	0.60
1:A:256:GLU:OE2	9:I:878:ARG:NE	2.34	0.60
6:F:113:LEU:HD12	6:F:114:GLU:N	2.17	0.60
7:G:439:LEU:O	7:G:443:ILE:N	2.35	0.60
7:G:182:ILE:HB	7:G:183:ILE:HD12	1.84	0.59
1:A:157:LYS:NZ	1:A:161:GLY:O	2.22	0.59
4:D:37:CYS:SG	4:D:82:ARG:NH1	2.75	0.59
7:G:742:ARG:NH1	8:H:64:THR:OG1	2.35	0.59
2:B:603:LEU:HB2	2:B:611:LEU:HD11	1.85	0.59
7:G:203:GLU:OE2	7:G:209:VAL:HG22	2.01	0.59
9:I:311:GLU:N	9:I:311:GLU:OE1	2.35	0.59
2:B:535:GLU:N	2:B:535:GLU:OE1	2.35	0.59
2:B:188:ARG:NH1	2:B:216:ALA:O	2.34	0.59
2:B:582:LEU:HD11	2:B:614:PHE:HE2	1.67	0.59
2:B:145:LEU:O	2:B:145:LEU:HD23	2.03	0.59
9:I:1009:GLU:OE1	9:I:1009:GLU:N	2.35	0.59
1:A:243:ARG:NH2	1:A:905:LEU:HD13	2.18	0.59
1:A:361:ASN:O	1:A:365:VAL:HG23	2.02	0.59
7:G:517:ASP:OD1	7:G:518:SER:N	2.36	0.59
9:I:76:ASN:OD1	9:I:1048:GLN:NE2	2.35	0.59
1:A:306:ARG:O	1:A:310:LYS:NZ	2.35	0.58
2:B:161:GLU:OE1	2:B:161:GLU:N	2.36	0.58
7:G:361:MET:HE2	7:G:408:LEU:HD12	1.85	0.58
2:B:1004:VAL:HG21	2:B:1007:PHE:CE1	2.39	0.58
10:J:112:GLN:OE1	10:J:115:ASN:ND2	2.36	0.58
6:F:14:VAL:HG11	6:F:41:TYR:CD2	2.38	0.58
9:I:232:LYS:NZ	9:I:906:GLU:OE1	2.37	0.58
2:B:469:ILE:HD11	2:B:476:VAL:CG2	2.33	0.58
2:B:639:ARG:NH1	2:B:679:MET:O	2.35	0.58
2:B:667:VAL:HG11	2:B:709:LYS:HE3	1.85	0.58
2:B:1045:GLU:N	2:B:1045:GLU:OE1	2.36	0.58
9:I:219:ARG:NH1	9:I:964:GLU:O	2.36	0.58
2:B:894:THR:HG22	2:B:895:THR:N	2.19	0.58

Continued on next page...

Continued from previous page...

Atom-1	Atom-2	Interatomic distance (Å)	Clash overlap (Å)
4:D:244:GLU:OE1	4:D:244:GLU:N	2.35	0.58
9:I:68:GLU:OE1	9:I:68:GLU:N	2.36	0.58
2:B:447:GLU:N	2:B:447:GLU:OE1	2.37	0.58
9:I:761:THR:HG23	10:J:75:LEU:HD21	1.86	0.58
1:A:804:ALA:O	1:A:808:VAL:HG23	2.03	0.57
1:A:169:GLU:OE1	1:A:169:GLU:N	2.36	0.57
2:B:589:ARG:NH1	7:G:87:TYR:OH	2.37	0.57
2:B:133:LEU:HD23	2:B:143:ILE:HD13	1.85	0.57
10:J:67:GLU:O	10:J:71:LEU:HD23	2.03	0.57
7:G:541:VAL:HG12	7:G:619:ILE:HD11	1.87	0.57
2:B:954:MET:HE1	2:B:975:PHE:CZ	2.39	0.57
9:I:244:GLU:OE2	9:I:248:GLN:NE2	2.37	0.57
9:I:951:GLN:OE1	9:I:1032:ARG:NH2	2.37	0.57
2:B:272:LEU:C	2:B:273:LEU:HD22	2.30	0.57
3:C:80:GLU:N	3:C:80:GLU:OE1	2.38	0.57
2:B:36:ASN:OD1	2:B:1034:ASN:ND2	2.38	0.56
2:B:504:ASN:ND2	2:B:551:GLY:O	2.38	0.56
7:G:163:GLN:N	7:G:163:GLN:OE1	2.37	0.56
2:B:512:VAL:HG23	2:B:512:VAL:O	2.05	0.56
1:A:918:LEU:HD23	4:D:70:LEU:HD23	1.86	0.56
7:G:748:ASP:OD1	7:G:749:LYS:N	2.39	0.56
9:I:1063:SER:N	9:I:1066:MET:SD	2.78	0.56
2:B:672:ASN:C	2:B:673:LEU:HD22	2.31	0.56
5:E:108:ARG:NH1	5:E:150:ASN:OD1	2.39	0.56
2:B:739:ARG:NH2	2:B:741:GLU:OE2	2.39	0.56
5:E:261:MET:SD	5:E:265:LYS:NZ	2.79	0.55
2:B:29:LEU:HD23	2:B:44:VAL:HG21	1.88	0.55
2:B:1015:GLN:OE1	2:B:1015:GLN:N	2.39	0.55
9:I:803:ILE:O	9:I:806:ASP:N	2.39	0.55
2:B:1022:THR:HG22	2:B:1135:GLU:CG	2.37	0.55
7:G:567:LEU:HD23	7:G:567:LEU:H	1.72	0.55
2:B:504:ASN:N	2:B:507:GLN:O	2.38	0.55
2:B:947:ARG:CZ	2:B:947:ARG:HA	2.36	0.55
1:A:887:ASP:OD1	1:A:888:ARG:N	2.39	0.55
5:E:126:LEU:HD12	5:E:127:PHE:N	2.21	0.55
1:A:792:GLU:N	1:A:792:GLU:OE1	2.40	0.55
4:D:139:LEU:O	4:D:140:SER:OG	2.15	0.55
1:A:248:LYS:O	1:A:252:VAL:HG23	2.07	0.55
1:A:1067:MET:SD	1:A:1067:MET:N	2.80	0.55
2:B:582:LEU:HD11	2:B:614:PHE:CE2	2.42	0.55
5:E:133:ARG:O	5:E:137:VAL:HG22	2.07	0.55

Continued on next page...

Continued from previous page...

Atom-1	Atom-2	Interatomic distance (Å)	Clash overlap (Å)
5:E:183:LEU:HD12	5:E:250:TRP:CD2	2.42	0.55
7:G:69:ALA:O	7:G:73:VAL:HG23	2.06	0.55
8:H:105:LYS:NZ	8:H:107:GLY:O	2.39	0.55
7:G:252:GLN:N	7:G:252:GLN:OE1	2.40	0.54
9:I:744:VAL:HG23	10:J:55:VAL:HG12	1.90	0.54
1:A:293:ILE:HD11	1:A:839:LYS:HG3	1.88	0.54
2:B:194:GLU:O	2:B:203:ASN:ND2	2.40	0.54
7:G:546:GLU:N	7:G:546:GLU:OE1	2.38	0.54
8:H:32:LEU:HD23	8:H:32:LEU:H	1.72	0.54
10:J:75:LEU:O	10:J:79:VAL:HG23	2.07	0.54
5:E:166:GLU:O	6:F:25:HIS:NE2	2.39	0.54
2:B:362:MET:HE1	2:B:1008:CYS:HB3	1.88	0.54
4:D:137:ASP:OD1	4:D:138:LYS:N	2.41	0.54
7:G:697:ASP:O	7:G:701:VAL:HG23	2.08	0.54
2:B:299:ASP:OD1	2:B:300:LEU:N	2.37	0.54
2:B:617:ASN:O	2:B:621:GLY:N	2.40	0.54
2:B:1022:THR:HG22	2:B:1135:GLU:HG2	1.89	0.54
4:D:124:PHE:O	4:D:127:VAL:HG12	2.07	0.54
7:G:581:GLU:OE1	8:H:21:ARG:NH2	2.41	0.54
9:I:833:GLN:N	9:I:833:GLN:OE1	2.41	0.54
7:G:86:LEU:O	7:G:90:VAL:HG23	2.07	0.54
9:I:66:ILE:HD12	9:I:66:ILE:H	1.73	0.54
1:A:971:VAL:HG11	1:A:995:SER:HB3	1.89	0.54
2:B:482:GLU:OE1	2:B:482:GLU:N	2.40	0.54
7:G:45:ILE:HD12	7:G:45:ILE:H	1.73	0.54
7:G:727:VAL:HG11	7:G:732:LEU:HD21	1.90	0.54
1:A:311:MET:SD	1:A:818:TYR:HB3	2.47	0.54
7:G:66:LEU:O	7:G:70:VAL:HG23	2.08	0.54
10:J:62:ASP:O	10:J:66:VAL:HG23	2.07	0.54
2:B:619:GLU:OE1	2:B:619:GLU:N	2.40	0.53
7:G:684:THR:O	7:G:688:VAL:HG23	2.08	0.53
8:H:84:ILE:O	8:H:85:SER:OG	2.17	0.53
1:A:905:LEU:O	1:A:909:VAL:HG23	2.08	0.53
2:B:642:ARG:NH1	2:B:646:THR:O	2.42	0.53
1:A:952:ARG:HH22	1:A:1028:ILE:HG22	1.74	0.53
2:B:408:LYS:HE3	2:B:430:VAL:HG22	1.90	0.53
7:G:256:VAL:HG21	7:G:305:LYS:O	2.08	0.53
2:B:961:ASP:OD2	2:B:964:ASN:ND2	2.41	0.53
4:D:262:VAL:O	4:D:266:VAL:HG23	2.08	0.53
3:C:100:LEU:H	3:C:100:LEU:HD23	1.74	0.53
7:G:378:VAL:O	7:G:381:GLN:NE2	2.42	0.53

Continued on next page...

Continued from previous page...

Atom-1	Atom-2	Interatomic distance (Å)	Clash overlap (Å)
2:B:436:LEU:HD21	2:B:443:VAL:HB	1.91	0.53
6:F:193:ILE:HG12	6:F:211:MET:HE1	1.91	0.53
4:D:123:LEU:HD12	4:D:124:PHE:N	2.24	0.53
9:I:956:VAL:O	9:I:971:ILE:HD11	2.10	0.53
10:J:40:THR:O	10:J:44:VAL:HG23	2.09	0.52
7:G:318:ASP:OD1	7:G:319:LEU:N	2.42	0.52
7:G:721:ASN:OD1	7:G:722:GLN:N	2.43	0.52
1:A:342:ARG:HD3	1:A:783:ILE:HG23	1.92	0.52
2:B:589:ARG:N	2:B:605:ALA:O	2.42	0.52
2:B:677:ASN:N	2:B:694:ALA:O	2.39	0.52
1:A:369:ARG:NH1	9:I:364:ASN:OD1	2.42	0.52
2:B:96:GLU:OE1	2:B:96:GLU:N	2.39	0.52
5:E:158:LEU:HD12	5:E:158:LEU:O	2.09	0.52
7:G:593:LEU:HD11	8:H:27:TRP:CD1	2.45	0.52
9:I:929:LEU:O	9:I:933:LYS:N	2.39	0.52
5:E:136:TYR:O	6:F:16:ARG:NH2	2.41	0.52
9:I:161:VAL:O	9:I:165:VAL:HG22	2.09	0.52
2:B:593:MET:HE3	2:B:600:HIS:HB3	1.92	0.52
5:E:240:HIS:O	5:E:240:HIS:ND1	2.42	0.52
1:A:44:GLU:OE1	1:A:44:GLU:N	2.42	0.52
2:B:291:MET:SD	2:B:291:MET:N	2.82	0.52
2:B:1129:LEU:O	2:B:1133:VAL:HG23	2.10	0.52
9:I:1064:GLU:N	9:I:1064:GLU:OE1	2.38	0.52
10:J:27:LEU:HD23	10:J:79:VAL:HG22	1.92	0.52
2:B:629:VAL:HG23	2:B:1138:ARG:HH21	1.73	0.51
2:B:842:GLU:O	2:B:844:LYS:NZ	2.37	0.51
7:G:502:LYS:O	7:G:506:VAL:HG23	2.09	0.51
7:G:503:ASP:O	7:G:507:HIS:ND1	2.40	0.51
1:A:57:MET:O	1:A:111:LYS:NZ	2.29	0.51
1:A:261:ILE:HG21	1:A:888:ARG:HG3	1.92	0.51
2:B:209:GLN:NE2	2:B:210:GLU:O	2.43	0.51
2:B:744:ASP:O	2:B:748:GLY:N	2.43	0.51
1:A:152:ARG:NH2	1:A:154:TYR:OH	2.44	0.51
7:G:110:CYS:O	7:G:114:VAL:HG23	2.10	0.51
9:I:959:HIS:NE2	9:I:961:GLU:OE2	2.43	0.51
1:A:243:ARG:CZ	1:A:905:LEU:HD13	2.40	0.51
1:A:312:GLU:O	1:A:316:VAL:HG23	2.11	0.51
2:B:422:ASP:N	2:B:683:ASN:O	2.43	0.51
7:G:73:VAL:HG13	7:G:148:MET:SD	2.51	0.51
7:G:414:ASP:OD1	7:G:460:ARG:NH2	2.44	0.51
2:B:250:PRO:O	2:B:254:LYS:NZ	2.34	0.51

Continued on next page...

Continued from previous page...

Atom-1	Atom-2	Interatomic distance (Å)	Clash overlap (Å)
4:D:125:LEU:HD13	4:D:130:ASN:HA	1.93	0.51
6:F:145:GLU:O	6:F:149:VAL:HG23	2.10	0.51
7:G:316:VAL:HG11	7:G:378:VAL:HG11	1.90	0.51
9:I:59:GLU:HB2	9:I:66:ILE:HD11	1.92	0.51
1:A:114:GLN:N	1:A:114:GLN:OE1	2.43	0.51
1:A:342:ARG:O	1:A:346:CYS:N	2.39	0.51
1:A:1049:THR:HG21	1:A:1053:MET:HE1	1.93	0.51
2:B:449:MET:SD	2:B:449:MET:N	2.81	0.51
5:E:209:PRO:HB2	5:E:220:LYS:HE3	1.93	0.51
6:F:23:MET:SD	6:F:24:THR:N	2.83	0.51
2:B:255:GLN:OE1	2:B:279:ARG:NH1	2.43	0.51
4:D:132:MET:HG3	4:D:132:MET:O	2.10	0.51
1:A:282:VAL:HG12	1:A:864:ALA:HB1	1.93	0.51
9:I:320:LEU:CD1	9:I:777:VAL:HG21	2.41	0.50
1:A:350:LYS:O	1:A:354:VAL:HG23	2.10	0.50
2:B:402:ILE:O	2:B:699:LEU:N	2.38	0.50
9:I:1025:MET:SD	9:I:1026:ASP:N	2.85	0.50
1:A:1018:ASP:HB3	1:A:1021:MET:HE1	1.92	0.50
9:I:242:ARG:NH2	9:I:246:TYR:OH	2.44	0.50
9:I:268:ALA:HB2	9:I:826:VAL:HG21	1.93	0.50
9:I:908:LYS:O	9:I:912:VAL:HG23	2.11	0.50
1:A:937:LEU:HD12	1:A:938:THR:N	2.27	0.50
2:B:1061:VAL:HG21	2:B:1108:VAL:HG22	1.94	0.50
3:C:122:GLU:N	3:C:122:GLU:OE1	2.44	0.50
9:I:250:VAL:HG22	9:I:254:TYR:CZ	2.47	0.50
7:G:368:PHE:O	7:G:372:VAL:HG23	2.10	0.50
7:G:476:LEU:HD21	7:G:495:PHE:CE1	2.46	0.50
2:B:368:GLU:OE2	2:B:374:GLN:NE2	2.44	0.50
2:B:1069:GLU:OE1	2:B:1071:SER:N	2.41	0.50
7:G:497:ASP:OD1	7:G:529:THR:OG1	2.22	0.50
7:G:576:ALA:CB	7:G:596:THR:HG21	2.41	0.50
2:B:707:ILE:N	2:B:707:ILE:HD12	2.27	0.50
2:B:1000:LEU:O	2:B:1074:ARG:NH1	2.45	0.50
2:B:1069:GLU:OE2	2:B:1072:PHE:N	2.39	0.50
5:E:168:ARG:NE	6:F:24:THR:O	2.43	0.50
1:A:227:MET:HE2	1:A:227:MET:HA	1.94	0.49
2:B:132:GLY:C	2:B:133:LEU:HD22	2.36	0.49
5:E:158:LEU:HD13	6:F:17:ARG:HH12	1.77	0.49
10:J:52:GLN:HA	10:J:142:LEU:HD11	1.94	0.49
2:B:350:MET:SD	2:B:350:MET:N	2.85	0.49
4:D:71:GLU:O	4:D:75:VAL:HG23	2.11	0.49

Continued on next page...

Continued from previous page...

Atom-1	Atom-2	Interatomic distance (Å)	Clash overlap (Å)
7:G:286:LEU:O	7:G:290:VAL:HG23	2.12	0.49
10:J:45:ALA:HA	10:J:48:LEU:HD12	1.93	0.49
2:B:133:LEU:HD23	2:B:143:ILE:CD1	2.42	0.49
2:B:884:ILE:HG22	2:B:885:ASN:H	1.76	0.49
1:A:311:MET:SD	1:A:818:TYR:CB	3.00	0.49
1:A:961:ASP:OD2	1:A:964:ASN:ND2	2.46	0.49
2:B:954:MET:HE1	2:B:975:PHE:HZ	1.76	0.49
9:I:871:LEU:HD13	9:I:874:GLU:OE2	2.11	0.49
6:F:205:GLU:HG3	6:F:206:THR:HG23	1.94	0.49
6:F:212:HIS:O	6:F:216:VAL:HG23	2.12	0.49
7:G:528:LEU:HD22	7:G:533:TRP:CZ2	2.48	0.49
10:J:51:SER:OG	10:J:53:THR:OG1	2.21	0.49
2:B:679:MET:SD	2:B:680:CYS:N	2.85	0.49
6:F:22:LEU:O	6:F:26:GLY:N	2.38	0.49
7:G:259:TYR:O	7:G:263:VAL:HG23	2.13	0.49
1:A:71:VAL:HG23	1:A:1045:PHE:HB2	1.94	0.49
2:B:332:GLN:N	2:B:332:GLN:OE1	2.46	0.49
2:B:876:PHE:N	2:B:879:LYS:O	2.43	0.49
4:D:85:GLU:OE1	4:D:85:GLU:N	2.45	0.49
9:I:334:ALA:HB1	9:I:760:CYS:HB2	1.95	0.49
2:B:258:ILE:HG21	2:B:273:LEU:HD12	1.94	0.49
6:F:198:LEU:H	6:F:198:LEU:HD23	1.77	0.49
2:B:40:GLU:OE1	2:B:40:GLU:N	2.46	0.48
6:F:76:THR:O	6:F:80:GLY:N	2.41	0.48
7:G:124:ASP:OD1	7:G:125:SER:N	2.45	0.48
1:A:128:ASP:OD1	1:A:129:ASP:N	2.45	0.48
2:B:472:THR:OG1	2:B:475:SER:O	2.28	0.48
2:B:1105:MET:HE1	2:B:1126:ALA:HB1	1.95	0.48
2:B:849:VAL:HG13	2:B:860:THR:HG23	1.95	0.48
9:I:956:VAL:O	9:I:956:VAL:HG22	2.14	0.48
2:B:1055:GLN:HG3	2:B:1089:ILE:HD11	1.96	0.48
7:G:183:ILE:HG22	7:G:183:ILE:O	2.13	0.48
9:I:243:ASN:ND2	9:I:900:ILE:HD12	2.28	0.48
7:G:601:MET:HE1	7:G:617:THR:HG23	1.94	0.48
7:G:669:ILE:O	7:G:669:ILE:HG22	2.13	0.48
9:I:764:HIS:O	9:I:768:VAL:HG23	2.13	0.48
9:I:907:LEU:C	9:I:907:LEU:HD23	2.38	0.48
1:A:90:ILE:HD11	1:A:188:VAL:HG11	1.96	0.48
1:A:324:LYS:NZ	1:A:807:GLU:OE2	2.44	0.48
1:A:369:ARG:HG3	9:I:361:VAL:HG22	1.96	0.48
9:I:729:GLU:OE1	9:I:729:GLU:N	2.44	0.48

Continued on next page...

Continued from previous page...

Atom-1	Atom-2	Interatomic distance (Å)	Clash overlap (Å)
9:I:882:PHE:HB2	9:I:885:LEU:HD11	1.96	0.48
1:A:216:LEU:HD11	1:A:937:LEU:HD21	1.96	0.48
2:B:659:ILE:N	2:B:659:ILE:HD12	2.28	0.48
7:G:316:VAL:CG1	7:G:378:VAL:HG11	2.44	0.48
7:G:636:ALA:O	7:G:657:ASN:ND2	2.46	0.48
9:I:171:GLN:NE2	9:I:174:ASN:OD1	2.47	0.48
2:B:762:SER:O	2:B:804:ALA:N	2.46	0.48
1:A:264:LEU:HD21	1:A:881:GLU:HB3	1.96	0.48
7:G:161:VAL:HG11	7:G:169:SER:HA	1.95	0.48
8:H:97:ASP:OD2	8:H:99:ARG:NE	2.47	0.48
10:J:58:GLU:OE1	10:J:58:GLU:N	2.42	0.48
1:A:217:GLU:OE1	1:A:217:GLU:N	2.40	0.48
9:I:338:CYS:SG	9:I:753:LEU:HB2	2.54	0.48
2:B:471:ILE:HG13	2:B:476:VAL:HG23	1.96	0.47
4:D:314:TRP:O	4:D:318:VAL:HG23	2.13	0.47
6:F:14:VAL:HG11	6:F:41:TYR:HD2	1.78	0.47
6:F:178:GLN:OE1	6:F:178:GLN:N	2.41	0.47
1:A:238:HIS:ND1	9:I:241:GLN:HG3	2.29	0.47
2:B:16:ASN:OD1	2:B:17:GLY:N	2.47	0.47
7:G:361:MET:HE2	7:G:408:LEU:HD13	1.95	0.47
2:B:326:SER:O	2:B:355:ASN:ND2	2.48	0.47
9:I:324:ILE:HD11	9:I:774:ASN:HB2	1.96	0.47
1:A:261:ILE:HD13	1:A:888:ARG:HA	1.95	0.47
2:B:283:LEU:CD1	2:B:302:VAL:HG22	2.44	0.47
2:B:318:ASP:OD1	2:B:319:ASN:N	2.47	0.47
4:D:112:ASN:ND2	5:E:188:MET:O	2.44	0.47
7:G:384:GLU:OE1	7:G:384:GLU:N	2.42	0.47
9:I:86:LYS:HD2	9:I:1052:ILE:HG23	1.97	0.47
9:I:324:ILE:HD11	9:I:774:ASN:CB	2.43	0.47
1:A:282:VAL:HG12	1:A:864:ALA:CB	2.45	0.47
1:A:894:GLN:OE1	1:A:894:GLN:N	2.44	0.47
2:B:682:LEU:HD11	2:B:690:SER:HB2	1.97	0.47
5:E:247:GLU:OE1	5:E:247:GLU:N	2.48	0.47
9:I:136:ILE:HD11	9:I:149:TRP:HB2	1.96	0.47
9:I:751:THR:HG21	10:J:59:TYR:HA	1.95	0.47
2:B:582:LEU:HD12	2:B:612:PHE:CD2	2.49	0.47
7:G:578:LEU:HD12	7:G:591:VAL:HG11	1.97	0.47
1:A:999:PHE:CE2	1:A:1003:LEU:HD11	2.50	0.47
2:B:932:LEU:H	2:B:947:ARG:NH2	2.13	0.47
2:B:795:ASP:OD1	2:B:796:GLN:N	2.48	0.47
4:D:95:MET:SD	4:D:96:ALA:N	2.88	0.47

Continued on next page...

Continued from previous page...

Atom-1	Atom-2	Interatomic distance (Å)	Clash overlap (Å)
6:F:130:LEU:O	6:F:133:VAL:HG22	2.14	0.47
7:G:218:LEU:HD22	7:G:277:TYR:HD2	1.80	0.47
2:B:529:ILE:N	2:B:529:ILE:HD12	2.29	0.47
9:I:956:VAL:HG23	9:I:973:ILE:HG13	1.97	0.47
10:J:20:VAL:HG22	10:J:86:ILE:HD11	1.97	0.47
9:I:773:GLN:O	9:I:777:VAL:HG23	2.16	0.46
2:B:186:GLN:OE1	2:B:186:GLN:N	2.45	0.46
1:A:286:ILE:HG21	1:A:843:LEU:HB2	1.97	0.46
2:B:143:ILE:HD12	2:B:143:ILE:N	2.30	0.46
2:B:792:LEU:HD12	2:B:792:LEU:N	2.30	0.46
2:B:1020:THR:OG1	2:B:1022:THR:HG23	2.15	0.46
4:D:48:MET:HE1	4:D:88:LEU:HD11	1.98	0.46
7:G:398:ILE:HG21	7:G:443:ILE:HA	1.96	0.46
7:G:704:MET:SD	7:G:745:MET:HE3	2.56	0.46
2:B:258:ILE:HD12	2:B:273:LEU:HB3	1.98	0.46
2:B:362:MET:SD	2:B:363:CYS:N	2.89	0.46
2:B:894:THR:HG22	2:B:895:THR:H	1.79	0.46
5:E:168:ARG:NH2	6:F:24:THR:O	2.46	0.46
2:B:914:LEU:CD2	2:B:923:VAL:HG22	2.46	0.46
2:B:932:LEU:H	2:B:947:ARG:HH21	1.64	0.46
7:G:314:ASN:O	7:G:314:ASN:ND2	2.48	0.46
9:I:761:THR:CG2	10:J:75:LEU:HD21	2.46	0.46
2:B:166:ASP:OD2	2:B:219:VAL:HG12	2.16	0.46
2:B:382:PHE:O	2:B:383:LYS:HG2	2.15	0.46
9:I:229:CYS:O	9:I:233:THR:HG23	2.16	0.46
2:B:536:HIS:HB2	2:B:560:LEU:HD12	1.98	0.46
2:B:559:GLY:C	2:B:560:LEU:HD22	2.41	0.46
7:G:59:THR:O	7:G:62:THR:OG1	2.29	0.46
8:H:52:LEU:HB3	8:H:56:CYS:CB	2.46	0.46
9:I:973:ILE:N	9:I:973:ILE:HD12	2.31	0.46
10:J:85:THR:O	10:J:89:VAL:HG23	2.16	0.46
1:A:91:VAL:HG12	1:A:97:ALA:HB2	1.97	0.46
1:A:911:THR:HG23	1:A:914:LYS:HE3	1.98	0.46
1:A:939:LEU:HD23	1:A:942:LYS:HE3	1.98	0.46
2:B:413:LEU:HD11	2:B:460:CYS:SG	2.56	0.46
6:F:13:ASP:OD1	6:F:16:ARG:NH1	2.49	0.46
7:G:102:LEU:HD23	7:G:156:LEU:CD1	2.46	0.46
9:I:124:GLU:OE2	9:I:135:VAL:HG21	2.16	0.46
2:B:603:LEU:O	2:B:603:LEU:HD12	2.15	0.46
9:I:958:LEU:HA	9:I:971:ILE:HD12	1.98	0.46
2:B:130:MET:HE2	2:B:142:VAL:HG13	1.99	0.45

Continued on next page...

Continued from previous page...

Atom-1	Atom-2	Interatomic distance (Å)	Clash overlap (Å)
2:B:467:GLN:C	2:B:468:LEU:HD12	2.41	0.45
2:B:884:ILE:N	2:B:887:THR:O	2.42	0.45
2:B:894:THR:CG2	2:B:895:THR:N	2.78	0.45
6:F:211:MET:HB2	6:F:211:MET:HE2	1.78	0.45
2:B:57:MET:HE3	2:B:58:TYR:H	1.81	0.45
9:I:297:ARG:HA	9:I:300:LYS:HG2	1.99	0.45
2:B:699:LEU:HD23	2:B:699:LEU:C	2.41	0.45
7:G:594:PHE:O	7:G:598:VAL:HG23	2.16	0.45
9:I:91:CYS:O	9:I:95:LEU:HD23	2.16	0.45
1:A:258:PHE:HD1	1:A:892:MET:HE1	1.81	0.45
2:B:448:LEU:HD23	2:B:451:PHE:CE2	2.51	0.45
4:D:127:VAL:HG21	4:D:150:PHE:CD1	2.51	0.45
7:G:61:ASP:OD1	7:G:64:ARG:NE	2.44	0.45
7:G:102:LEU:HD23	7:G:156:LEU:HD12	1.98	0.45
9:I:215:LEU:HD11	9:I:924:VAL:HG12	1.98	0.45
2:B:722:ARG:NH1	2:B:737:SER:C	2.74	0.45
7:G:310:LEU:C	7:G:310:LEU:HD23	2.42	0.45
7:G:156:LEU:HD23	7:G:156:LEU:C	2.42	0.45
8:H:52:LEU:HB3	8:H:56:CYS:HB2	1.98	0.45
9:I:75:LEU:HD23	9:I:75:LEU:C	2.41	0.45
2:B:817:VAL:HG12	2:B:873:MET:SD	2.56	0.45
3:C:112:PHE:O	3:C:116:LEU:HD23	2.16	0.45
6:F:69:ILE:HD12	6:F:69:ILE:N	2.32	0.45
7:G:549:LYS:O	7:G:553:VAL:HG23	2.16	0.45
9:I:289:ARG:HA	9:I:292:VAL:HG12	1.98	0.45
9:I:791:ALA:O	9:I:795:LEU:HD23	2.17	0.45
2:B:791:LEU:C	2:B:792:LEU:HD12	2.41	0.45
2:B:1009:HIS:HA	2:B:1028:VAL:HG12	1.99	0.45
3:C:79:MET:SD	3:C:79:MET:N	2.89	0.45
7:G:555:LYS:HD3	7:G:567:LEU:HD21	1.99	0.45
1:A:911:THR:HG22	1:A:915:PHE:CE2	2.52	0.45
2:B:554:PRO:HG2	2:B:555:LEU:HD12	1.99	0.45
1:A:369:ARG:HG2	9:I:361:VAL:HG13	1.98	0.45
2:B:437:MET:HA	2:B:437:MET:HE2	1.98	0.45
9:I:1029:ASN:O	9:I:1033:VAL:HG23	2.17	0.45
2:B:502:SER:OG	2:B:543:ILE:HG22	2.18	0.44
9:I:352:ILE:HD12	9:I:742:ILE:HD12	1.99	0.44
9:I:864:THR:OG1	9:I:867:GLU:OE1	2.28	0.44
2:B:960:LEU:HD23	2:B:960:LEU:C	2.42	0.44
2:B:1014:MET:SD	2:B:1016:ASN:N	2.89	0.44
5:E:118:ASP:OD1	5:E:119:TYR:N	2.51	0.44

Continued on next page...

Continued from previous page...

Atom-1	Atom-2	Interatomic distance (Å)	Clash overlap (Å)
6:F:14:VAL:HG12	6:F:18:PHE:CZ	2.52	0.44
1:A:183:ASP:OD1	1:A:184:ASN:N	2.50	0.44
2:B:117:GLU:O	2:B:118:THR:OG1	2.33	0.44
7:G:214:LEU:O	7:G:218:LEU:HD13	2.18	0.44
10:J:49:VAL:HG21	10:J:133:LEU:CD1	2.48	0.44
4:D:146:ILE:HG22	4:D:146:ILE:O	2.17	0.44
5:E:233:LEU:HD12	5:E:249:GLN:O	2.17	0.44
6:F:173:ILE:HD12	6:F:173:ILE:N	2.33	0.44
6:F:209:ILE:HD12	6:F:209:ILE:N	2.32	0.44
7:G:357:LYS:O	7:G:361:MET:N	2.51	0.44
2:B:424:THR:HG23	2:B:437:MET:HE1	1.99	0.44
3:C:86:HIS:O	3:C:86:HIS:ND1	2.46	0.44
6:F:239:ILE:N	6:F:239:ILE:HD12	2.33	0.44
7:G:413:VAL:CG2	7:G:436:ILE:HG21	2.48	0.44
6:F:198:LEU:HD23	6:F:198:LEU:N	2.33	0.44
7:G:600:LEU:C	7:G:600:LEU:HD12	2.42	0.44
7:G:742:ARG:NH2	8:H:82:HIS:HE2	2.16	0.44
9:I:263:ILE:HD12	9:I:872:LEU:CD1	2.47	0.44
2:B:265:ASP:OD1	2:B:270:ARG:NH2	2.50	0.44
2:B:362:MET:HE1	2:B:1008:CYS:CB	2.47	0.44
2:B:884:ILE:HG22	2:B:885:ASN:N	2.33	0.44
2:B:1009:HIS:ND1	2:B:1027:SER:O	2.49	0.44
5:E:179:LEU:O	5:E:183:LEU:HD23	2.18	0.44
2:B:548:ASP:O	2:B:549:SER:OG	2.32	0.44
7:G:347:PHE:CE2	7:G:351:ILE:HD11	2.52	0.44
9:I:77:MET:HE1	9:I:79:VAL:CG2	2.48	0.44
2:B:1128:ASP:O	2:B:1132:VAL:HG23	2.18	0.43
6:F:51:ASP:OD1	6:F:52:LYS:N	2.46	0.43
7:G:61:ASP:O	7:G:64:ARG:HG3	2.18	0.43
1:A:261:ILE:HG21	1:A:888:ARG:CG	2.48	0.43
2:B:130:MET:CE	2:B:142:VAL:HG13	2.49	0.43
2:B:682:LEU:C	2:B:682:LEU:HD12	2.43	0.43
2:B:394:ILE:CD1	2:B:671:VAL:HG22	2.48	0.43
2:B:424:THR:HG23	2:B:437:MET:CE	2.47	0.43
3:C:89:LEU:HA	3:C:92:VAL:HG22	2.01	0.43
2:B:24:THR:OG1	2:B:30:ASN:OD1	2.27	0.43
3:C:107:ASP:OD1	3:C:108:LEU:N	2.52	0.43
4:D:308:SER:H	4:D:312:GLN:HB3	1.82	0.43
7:G:576:ALA:HB3	7:G:596:THR:HG21	1.99	0.43
2:B:842:GLU:OE2	2:B:885:ASN:ND2	2.48	0.43
5:E:173:THR:N	5:E:174:PRO:HD2	2.34	0.43

Continued on next page...

Continued from previous page...

Atom-1	Atom-2	Interatomic distance (Å)	Clash overlap (Å)
9:I:768:VAL:HG11	10:J:78:TYR:HE2	1.84	0.43
9:I:995:GLU:O	9:I:998:VAL:HG12	2.19	0.43
7:G:461:LEU:HD12	7:G:498:MET:HE1	2.00	0.43
9:I:270:ARG:CG	9:I:271:PRO:HD3	2.49	0.43
1:A:154:TYR:O	1:A:166:THR:OG1	2.33	0.43
2:B:564:ILE:HD12	2:B:564:ILE:N	2.33	0.43
2:B:603:LEU:HD12	2:B:603:LEU:C	2.43	0.43
2:B:672:ASN:O	2:B:673:LEU:HD22	2.18	0.43
4:D:107:LEU:C	4:D:107:LEU:HD23	2.43	0.43
1:A:343:ALA:HB3	1:A:344:PRO:HD3	2.00	0.43
2:B:36:ASN:ND2	2:B:1002:GLU:OE2	2.50	0.43
2:B:512:VAL:HG23	2:B:515:ALA:HB3	2.01	0.43
2:B:1070:HIS:NE2	2:B:1090:ASP:OD2	2.52	0.43
6:F:121:THR:HG23	6:F:123:PHE:H	1.84	0.43
7:G:218:LEU:HD23	7:G:278:LEU:HA	2.00	0.43
7:G:712:HIS:O	7:G:716:VAL:HG23	2.18	0.43
9:I:50:GLU:OE1	9:I:50:GLU:N	2.43	0.43
9:I:77:MET:HE1	9:I:79:VAL:HG22	2.01	0.43
9:I:803:ILE:O	9:I:804:GLU:C	2.62	0.43
5:E:252:PRO:O	5:E:256:LEU:HD23	2.19	0.43
9:I:728:LEU:C	9:I:728:LEU:HD23	2.44	0.43
1:A:997:VAL:O	1:A:1001:LEU:HD23	2.19	0.43
2:B:894:THR:CG2	2:B:895:THR:H	2.30	0.43
6:F:32:ASP:O	6:F:36:LEU:HD23	2.19	0.43
9:I:114:VAL:HG21	9:I:118:CYS:O	2.19	0.43
2:B:1035:GLY:O	2:B:1037:ILE:HD12	2.19	0.42
7:G:119:LEU:HD23	7:G:119:LEU:C	2.43	0.42
9:I:841:THR:OG1	9:I:854:LEU:O	2.37	0.42
9:I:920:ASN:O	9:I:924:VAL:HG23	2.18	0.42
9:I:1036:MET:O	9:I:1040:THR:HG22	2.19	0.42
2:B:47:GLU:OE1	2:B:47:GLU:N	2.52	0.42
2:B:592:LEU:HB3	2:B:603:LEU:HD11	2.01	0.42
5:E:122:ILE:HG23	5:E:126:LEU:HD23	2.01	0.42
5:E:158:LEU:HD12	5:E:158:LEU:C	2.44	0.42
1:A:1053:MET:SD	1:A:1053:MET:N	2.79	0.42
4:D:262:VAL:HA	4:D:265:ILE:HG22	2.00	0.42
6:F:156:ASN:O	6:F:157:LYS:HB3	2.19	0.42
7:G:284:LYS:HB2	7:G:285:PRO:HD3	2.02	0.42
2:B:482:GLU:HB2	2:B:483:PRO:HD3	2.00	0.42
4:D:304:GLN:OE1	4:D:304:GLN:N	2.47	0.42
7:G:218:LEU:HD22	7:G:277:TYR:CD2	2.54	0.42

Continued on next page...

Continued from previous page...

Atom-1	Atom-2	Interatomic distance (Å)	Clash overlap (Å)
9:I:274:GLU:O	9:I:278:VAL:HG23	2.19	0.42
1:A:311:MET:HE1	1:A:819:GLU:HB3	2.02	0.42
7:G:447:ASP:OD1	7:G:448:VAL:N	2.53	0.42
9:I:199:THR:O	9:I:203:ILE:HG22	2.19	0.42
1:A:283:VAL:HG13	1:A:843:LEU:HD11	2.01	0.42
2:B:188:ARG:O	2:B:189:HIS:ND1	2.52	0.42
2:B:581:MET:C	2:B:582:LEU:HD22	2.45	0.42
5:E:186:ILE:CD1	5:E:233:LEU:HD11	2.49	0.42
6:F:70:GLU:OE1	6:F:70:GLU:N	2.52	0.42
7:G:601:MET:HE1	7:G:613:ILE:HG23	2.00	0.42
8:H:52:LEU:HB2	8:H:57:GLN:NE2	2.34	0.42
1:A:983:ASP:OD2	1:A:986:ALA:N	2.52	0.42
2:B:33:ILE:N	2:B:33:ILE:HD12	2.34	0.42
2:B:367:LEU:C	2:B:367:LEU:HD23	2.44	0.42
1:A:914:LYS:NZ	4:D:67:THR:OG1	2.53	0.42
1:A:967:LEU:HD23	1:A:968:SER:N	2.34	0.42
10:J:129:PHE:O	10:J:133:LEU:HD23	2.20	0.42
1:A:62:LEU:HD21	1:A:65:PHE:CE2	2.55	0.42
1:A:918:LEU:O	1:A:921:GLU:HG3	2.20	0.42
4:D:117:LEU:HD23	4:D:117:LEU:C	2.45	0.42
7:G:538:PRO:HG3	8:H:32:LEU:HD21	2.01	0.42
1:A:279:ALA:HB1	1:A:850:ALA:HB2	2.02	0.42
1:A:369:ARG:HH21	9:I:360:ILE:HG22	1.85	0.42
5:E:119:TYR:HB3	5:E:122:ILE:HG22	2.01	0.42
5:E:158:LEU:HD13	6:F:17:ARG:NH1	2.34	0.42
2:B:219:VAL:HG13	2:B:219:VAL:O	2.20	0.41
2:B:793:ILE:O	2:B:802:LEU:N	2.51	0.41
2:B:1100:ILE:N	2:B:1100:ILE:HD12	2.34	0.41
5:E:86:GLU:HA	5:E:89:VAL:HG22	2.01	0.41
6:F:116:ILE:HG21	6:F:168:LEU:HD22	2.02	0.41
9:I:270:ARG:N	9:I:271:PRO:CD	2.83	0.41
2:B:463:VAL:HG12	2:B:464:ALA:N	2.35	0.41
2:B:538:VAL:O	2:B:561:TRP:NE1	2.53	0.41
7:G:678:VAL:O	7:G:682:VAL:HG23	2.20	0.41
1:A:781:ASP:OD1	1:A:782:ALA:N	2.53	0.41
2:B:707:ILE:HG22	2:B:707:ILE:O	2.19	0.41
4:D:317:ILE:HD12	4:D:317:ILE:N	2.35	0.41
5:E:170:ASP:OD1	5:E:170:ASP:N	2.54	0.41
7:G:93:LEU:C	7:G:93:LEU:HD23	2.45	0.41
1:A:203:GLU:OE2	1:A:985:ARG:NH1	2.53	0.41
8:H:32:LEU:HD23	8:H:32:LEU:N	2.35	0.41

Continued on next page...

Continued from previous page...

Atom-1	Atom-2	Interatomic distance (Å)	Clash overlap (Å)
4:D:123:LEU:HD12	4:D:123:LEU:C	2.46	0.41
5:E:183:LEU:HD12	5:E:250:TRP:CE3	2.56	0.41
1:A:294:ARG:HA	1:A:297:ILE:HG22	2.02	0.41
4:D:306:VAL:HG22	4:D:306:VAL:O	2.20	0.41
5:E:179:LEU:HD13	5:E:227:PHE:CD1	2.55	0.41
5:E:186:ILE:HG22	5:E:191:ASN:HA	2.03	0.41
7:G:568:GLN:OE1	7:G:568:GLN:N	2.54	0.41
9:I:136:ILE:HD12	9:I:151:ILE:HG22	2.02	0.41
9:I:320:LEU:HD11	9:I:777:VAL:HG21	2.01	0.41
5:E:97:LEU:HD12	5:E:97:LEU:C	2.46	0.41
1:A:937:LEU:HA	1:A:940:ARG:HG2	2.03	0.41
2:B:271:TYR:O	2:B:282:MET:HE3	2.21	0.41
2:B:894:THR:HG21	2:B:896:GLU:OE2	2.21	0.41
4:D:128:GLY:O	4:D:130:ASN:ND2	2.53	0.41
7:G:623:GLU:O	7:G:627:THR:HG23	2.21	0.41
2:B:310:ILE:HD12	2:B:310:ILE:N	2.35	0.41
2:B:927:MET:SD	2:B:927:MET:N	2.94	0.41
2:B:1134:GLU:O	2:B:1138:ARG:HG2	2.21	0.41
4:D:48:MET:CE	4:D:88:LEU:HD11	2.51	0.41
4:D:127:VAL:HG21	4:D:150:PHE:HD1	1.85	0.41
5:E:170:ASP:N	5:E:173:THR:OG1	2.54	0.41
7:G:641:LYS:NZ	7:G:652:ASP:OD2	2.42	0.41
9:I:187:PHE:HD2	9:I:195:LEU:HD11	1.86	0.41
9:I:229:CYS:HA	9:I:232:LYS:HG2	2.03	0.41
9:I:844:PRO:HD2	9:I:853:SER:HA	2.03	0.41
9:I:899:GLU:O	9:I:903:LEU:HD13	2.20	0.41
1:A:91:VAL:O	1:A:144:GLN:NE2	2.54	0.41
1:A:836:LEU:C	1:A:836:LEU:HD23	2.46	0.41
2:B:32:LEU:HD11	2:B:66:LEU:HD21	2.02	0.41
2:B:636:THR:HG21	2:B:651:ALA:HB1	2.04	0.41
7:G:619:ILE:HG22	7:G:620:GLU:N	2.35	0.41
7:G:669:ILE:HG23	7:G:672:ILE:HD12	2.03	0.41
9:I:224:GLN:O	9:I:227:THR:HG22	2.21	0.41
9:I:256:ARG:HD3	9:I:885:LEU:HD13	2.03	0.41
9:I:865:LEU:HD12	9:I:865:LEU:N	2.36	0.41
1:A:227:MET:HE2	1:A:227:MET:CA	2.51	0.40
1:A:368:ASN:HB2	9:I:361:VAL:HG21	2.02	0.40
2:B:923:VAL:O	2:B:931:LEU:N	2.46	0.40
2:B:1029:LEU:C	2:B:1029:LEU:HD12	2.46	0.40
7:G:525:VAL:HG11	7:G:569:TRP:HE1	1.86	0.40
9:I:181:GLN:NE2	9:I:1020:GLU:O	2.54	0.40

Continued on next page...

Continued from previous page...

Atom-1	Atom-2	Interatomic distance (Å)	Clash overlap (Å)
4:D:77:PHE:O	4:D:80:VAL:HG22	2.21	0.40
7:G:45:ILE:HD12	7:G:45:ILE:N	2.37	0.40
7:G:179:ARG:NH1	7:G:224:LEU:O	2.55	0.40
7:G:348:GLY:O	7:G:352:VAL:HG22	2.21	0.40
1:A:381:ASP:OD1	1:A:382:GLU:N	2.54	0.40
1:A:961:ASP:O	1:A:965:GLU:N	2.55	0.40
2:B:261:HIS:HA	2:B:273:LEU:HD13	2.04	0.40
2:B:470:GLN:N	2:B:470:GLN:OE1	2.55	0.40
2:B:921:ILE:N	2:B:921:ILE:HD12	2.36	0.40

There are no symmetry-related clashes.

5.3 Torsion angles [i](#)

5.3.1 Protein backbone [i](#)

In the following table, the Percentiles column shows the percent Ramachandran outliers of the chain as a percentile score with respect to all PDB entries followed by that with respect to all EM entries.

The Analysed column shows the number of residues for which the backbone conformation was analysed, and the total number of residues.

Mol	Chain	Analysed	Favoured	Allowed	Outliers	Percentiles	
1	A	652/1091 (60%)	647 (99%)	5 (1%)	0	100	100
2	B	1138/1140 (100%)	1096 (96%)	42 (4%)	0	100	100
3	C	101/154 (66%)	96 (95%)	5 (5%)	0	100	100
4	D	217/333 (65%)	210 (97%)	7 (3%)	0	100	100
5	E	213/304 (70%)	207 (97%)	6 (3%)	0	100	100
6	F	235/266 (88%)	230 (98%)	5 (2%)	0	100	100
7	G	717/760 (94%)	700 (98%)	17 (2%)	0	100	100
8	H	88/108 (82%)	83 (94%)	5 (6%)	0	100	100
9	I	663/1101 (60%)	650 (98%)	13 (2%)	0	100	100
10	J	131/247 (53%)	131 (100%)	0	0	100	100
All	All	4155/5504 (76%)	4050 (98%)	105 (2%)	0	100	100

There are no Ramachandran outliers to report.

5.3.2 Protein sidechains ⓘ

In the following table, the Percentiles column shows the percent sidechain outliers of the chain as a percentile score with respect to all PDB entries followed by that with respect to all EM entries.

The Analysed column shows the number of residues for which the sidechain conformation was analysed, and the total number of residues.

Mol	Chain	Analysed	Rotameric	Outliers	Percentiles	
1	A	585/979 (60%)	583 (100%)	2 (0%)	86	86
2	B	999/999 (100%)	997 (100%)	2 (0%)	87	87
3	C	86/127 (68%)	85 (99%)	1 (1%)	63	75
4	D	200/296 (68%)	199 (100%)	1 (0%)	81	83
5	E	195/257 (76%)	194 (100%)	1 (0%)	81	83
6	F	216/242 (89%)	215 (100%)	1 (0%)	81	83
7	G	656/679 (97%)	653 (100%)	3 (0%)	81	83
8	H	79/90 (88%)	79 (100%)	0	100	100
9	I	615/1023 (60%)	612 (100%)	3 (0%)	81	83
10	J	120/222 (54%)	120 (100%)	0	100	100
All	All	3751/4914 (76%)	3737 (100%)	14 (0%)	81	84

All (14) residues with a non-rotameric sidechain are listed below:

Mol	Chain	Res	Type
1	A	53	LEU
1	A	957	LYS
2	B	708	GLN
2	B	947	ARG
3	C	89	LEU
4	D	310	THR
5	E	225	GLU
6	F	194	CYS
7	G	220	MET
7	G	443	ILE
7	G	552	GLU
9	I	300	LYS
9	I	780	GLU
9	I	926	GLU

Sometimes sidechains can be flipped to improve hydrogen bonding and reduce clashes. All (23) such sidechains are listed below:

Mol	Chain	Res	Type
1	A	314	GLN
2	B	36	ASN
2	B	877	ASN
2	B	904	ASN
2	B	1005	ASN
2	B	1034	ASN
2	B	1077	HIS
4	D	53	GLN
5	E	82	GLN
6	F	192	ASN
7	G	108	GLN
7	G	262	HIS
7	G	321	GLN
9	I	171	GLN
9	I	209	HIS
9	I	212	HIS
9	I	241	GLN
9	I	319	ASN
9	I	840	GLN
9	I	902	GLN
9	I	916	GLN
9	I	940	ASN
10	J	83	GLN

5.3.3 RNA [i](#)

There are no RNA molecules in this entry.

5.4 Non-standard residues in protein, DNA, RNA chains [i](#)

There are no non-standard protein/DNA/RNA residues in this entry.

5.5 Carbohydrates [i](#)

There are no oligosaccharides in this entry.

5.6 Ligand geometry [i](#)

Of 6 ligands modelled in this entry, 6 are monoatomic - leaving 0 for Mogul analysis.

There are no bond length outliers.

There are no bond angle outliers.

There are no chirality outliers.

There are no torsion outliers.

There are no ring outliers.

No monomer is involved in short contacts.

5.7 Other polymers

There are no such residues in this entry.

5.8 Polymer linkage issues

There are no chain breaks in this entry.

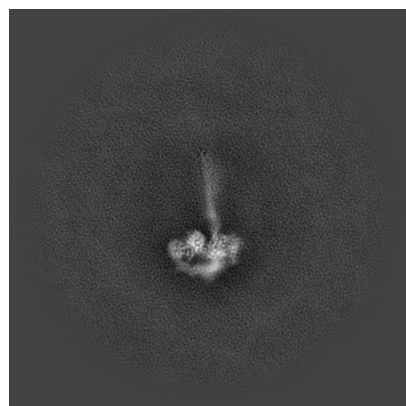
6 Map visualisation [i](#)

This section contains visualisations of the EMDB entry EMD-63447. These allow visual inspection of the internal detail of the map and identification of artifacts.

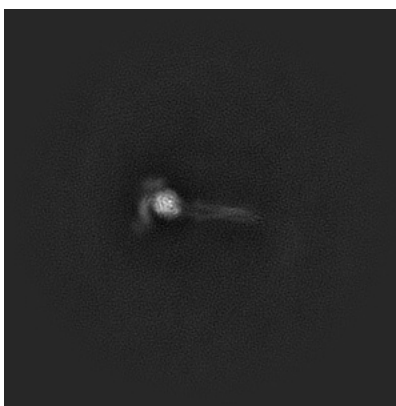
Images derived from a raw map, generated by summing the deposited half-maps, are presented below the corresponding image components of the primary map to allow further visual inspection and comparison with those of the primary map.

6.1 Orthogonal projections [i](#)

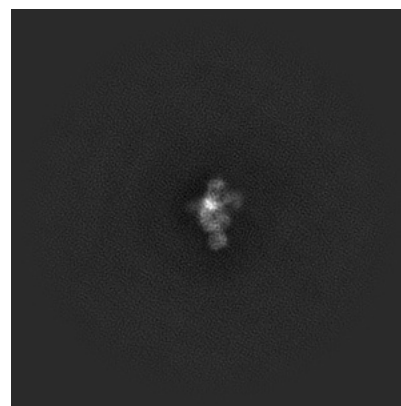
6.1.1 Primary map



X

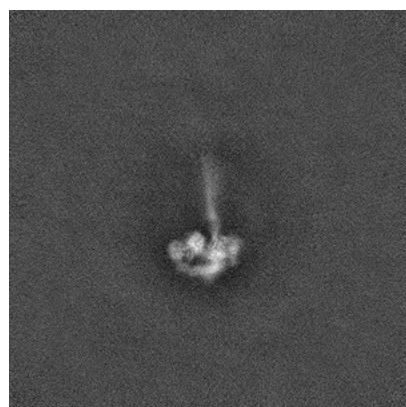


Y

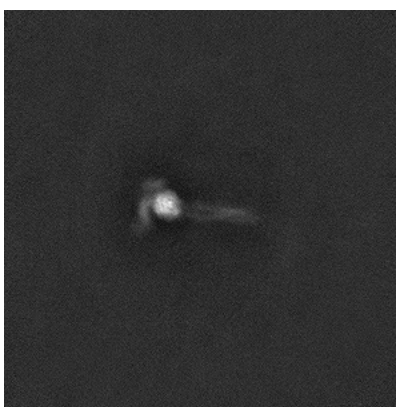


Z

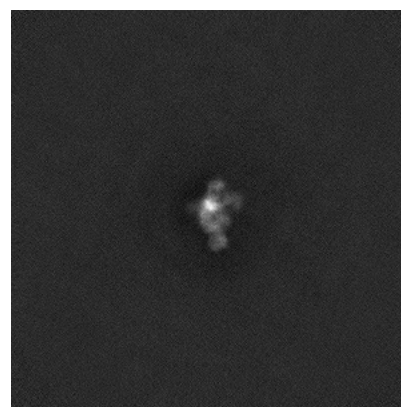
6.1.2 Raw map



X



Y

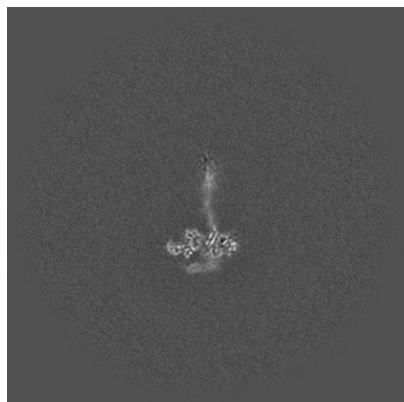


Z

The images above show the map projected in three orthogonal directions.

6.2 Central slices [i](#)

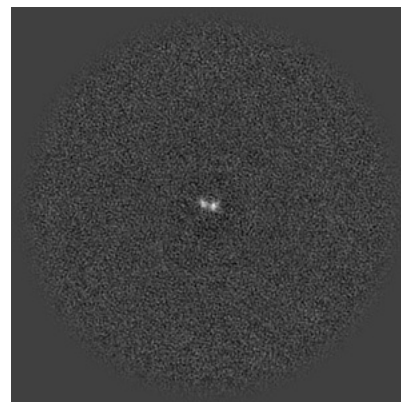
6.2.1 Primary map



X Index: 280

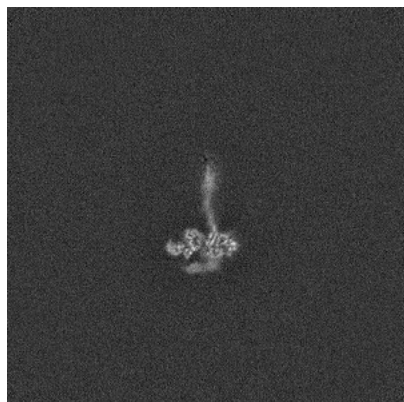


Y Index: 280



Z Index: 280

6.2.2 Raw map



X Index: 280



Y Index: 280

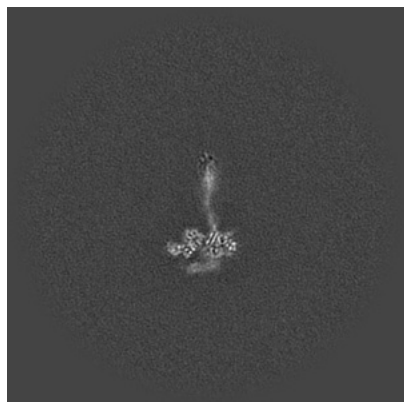


Z Index: 280

The images above show central slices of the map in three orthogonal directions.

6.3 Largest variance slices [i](#)

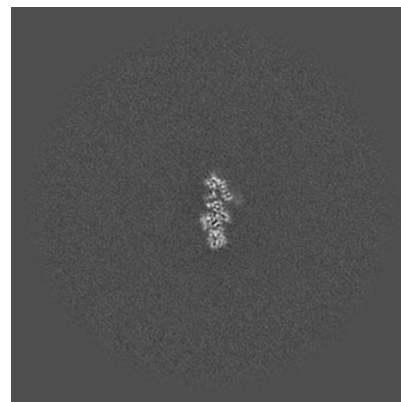
6.3.1 Primary map



X Index: 279

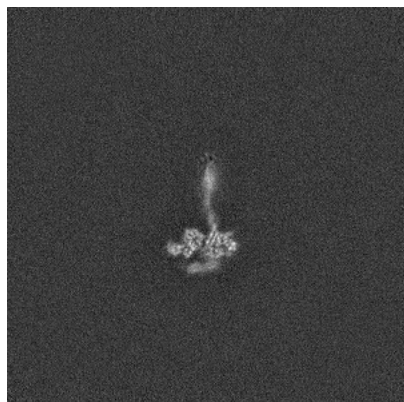


Y Index: 287

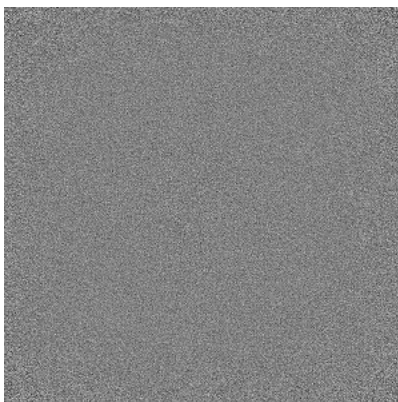


Z Index: 225

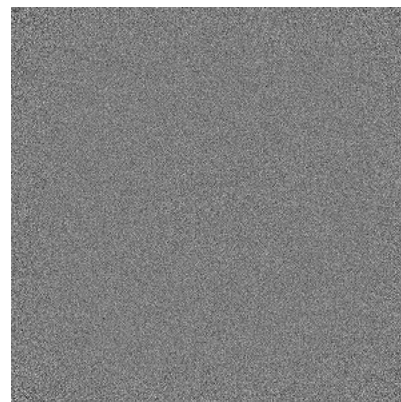
6.3.2 Raw map



X Index: 279



Y Index: 0

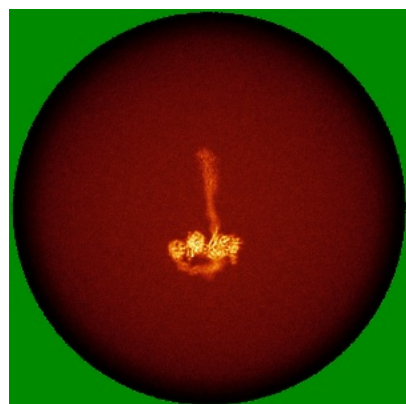


Z Index: 0

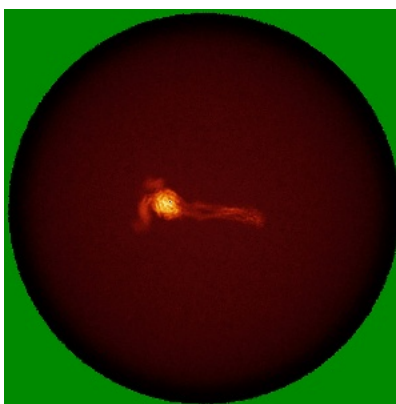
The images above show the largest variance slices of the map in three orthogonal directions.

6.4 Orthogonal standard-deviation projections (False-color) [i](#)

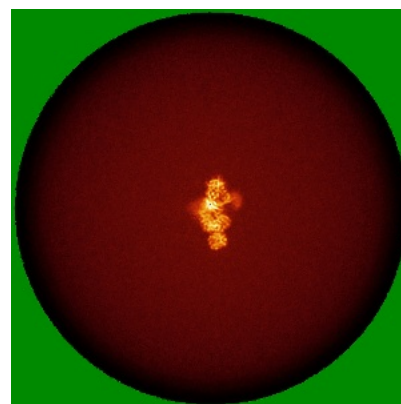
6.4.1 Primary map



X

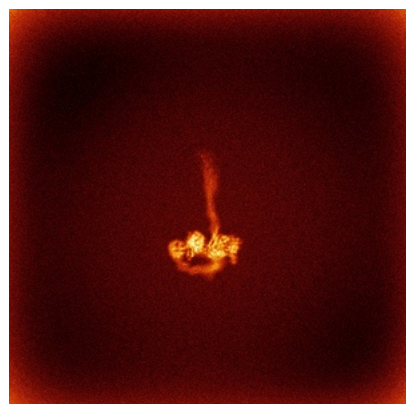


Y

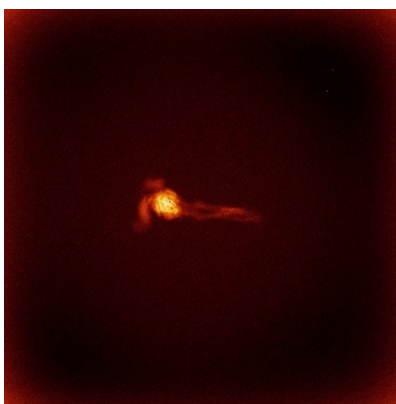


Z

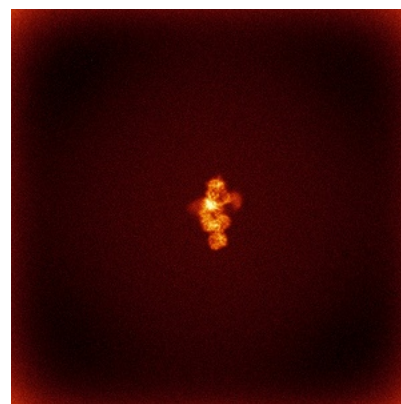
6.4.2 Raw map



X



Y

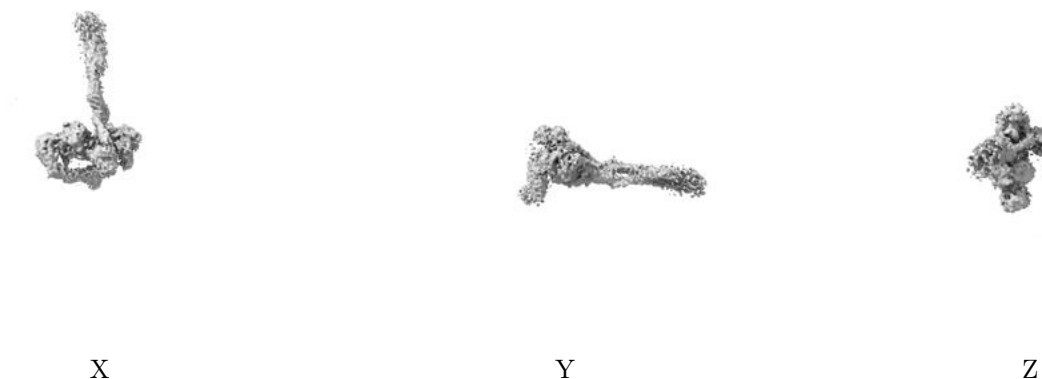


Z

The images above show the map standard deviation projections with false color in three orthogonal directions. Minimum values are shown in green, max in blue, and dark to light orange shades represent small to large values respectively.

6.5 Orthogonal surface views [i](#)

6.5.1 Primary map



The images above show the 3D surface view of the map at the recommended contour level 1.0. These images, in conjunction with the slice images, may facilitate assessment of whether an appropriate contour level has been provided.

6.5.2 Raw map



These images show the 3D surface of the raw map. The raw map's contour level was selected so that its surface encloses the same volume as the primary map does at its recommended contour level.

6.6 Mask visualisation [i](#)

This section shows the 3D surface view of the primary map at 50% transparency overlaid with the specified mask at 0% transparency

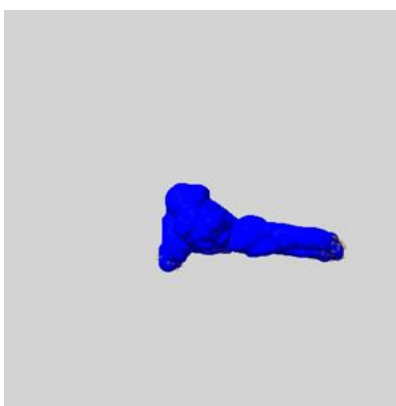
A mask typically either:

- Encompasses the whole structure
- Separates out a domain, a functional unit, a monomer or an area of interest from a larger structure

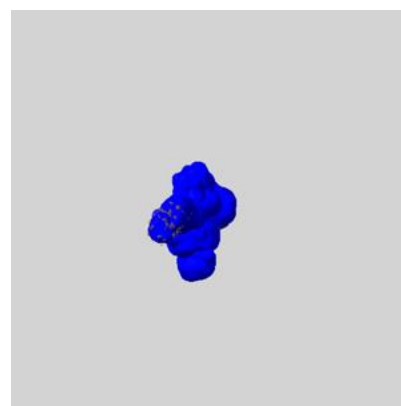
6.6.1 emd_63447_msk_1.map [i](#)



X



Y

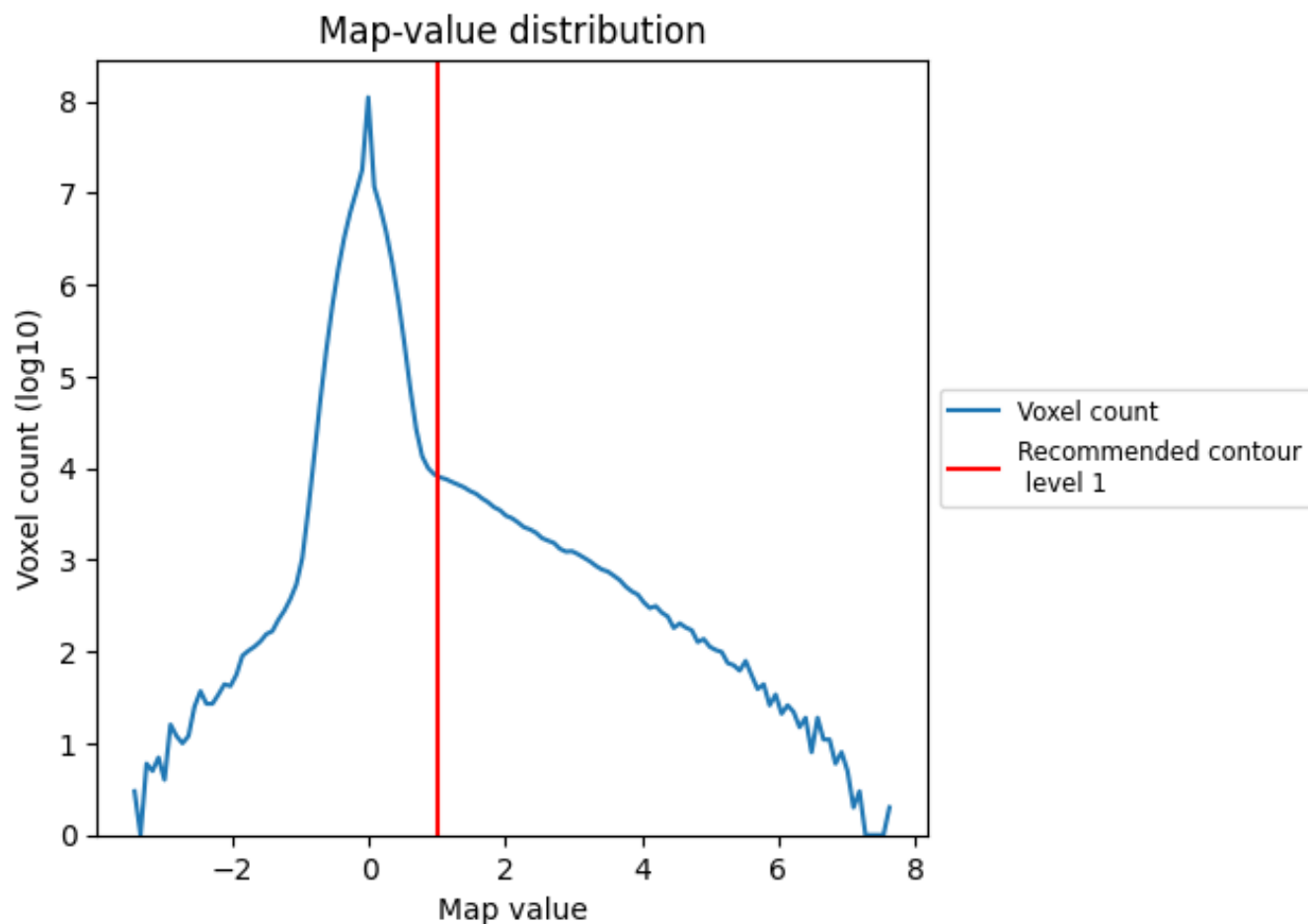


Z

7 Map analysis [i](#)

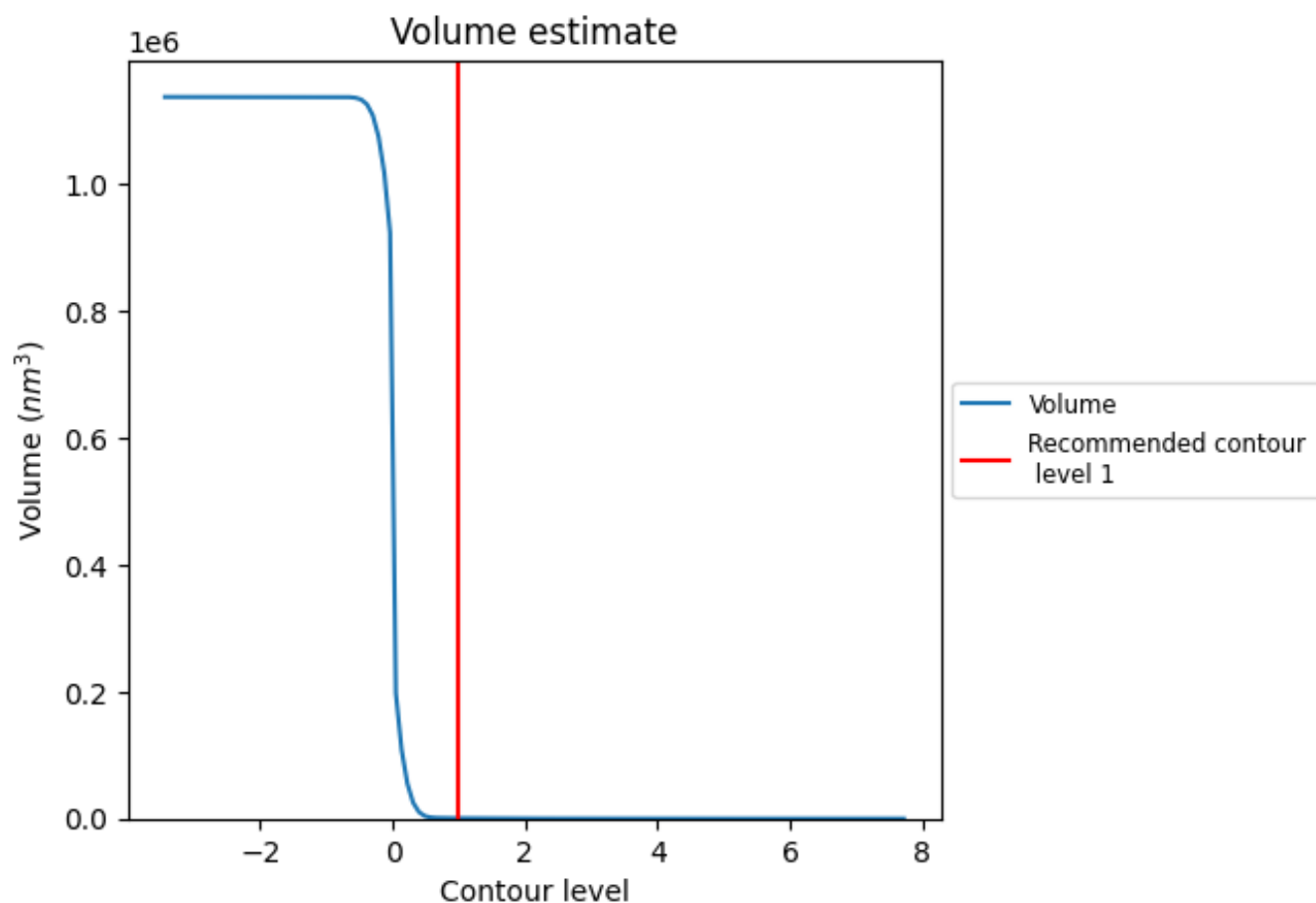
This section contains the results of statistical analysis of the map.

7.1 Map-value distribution [i](#)



The map-value distribution is plotted in 128 intervals along the x-axis. The y-axis is logarithmic. A spike in this graph at zero usually indicates that the volume has been masked.

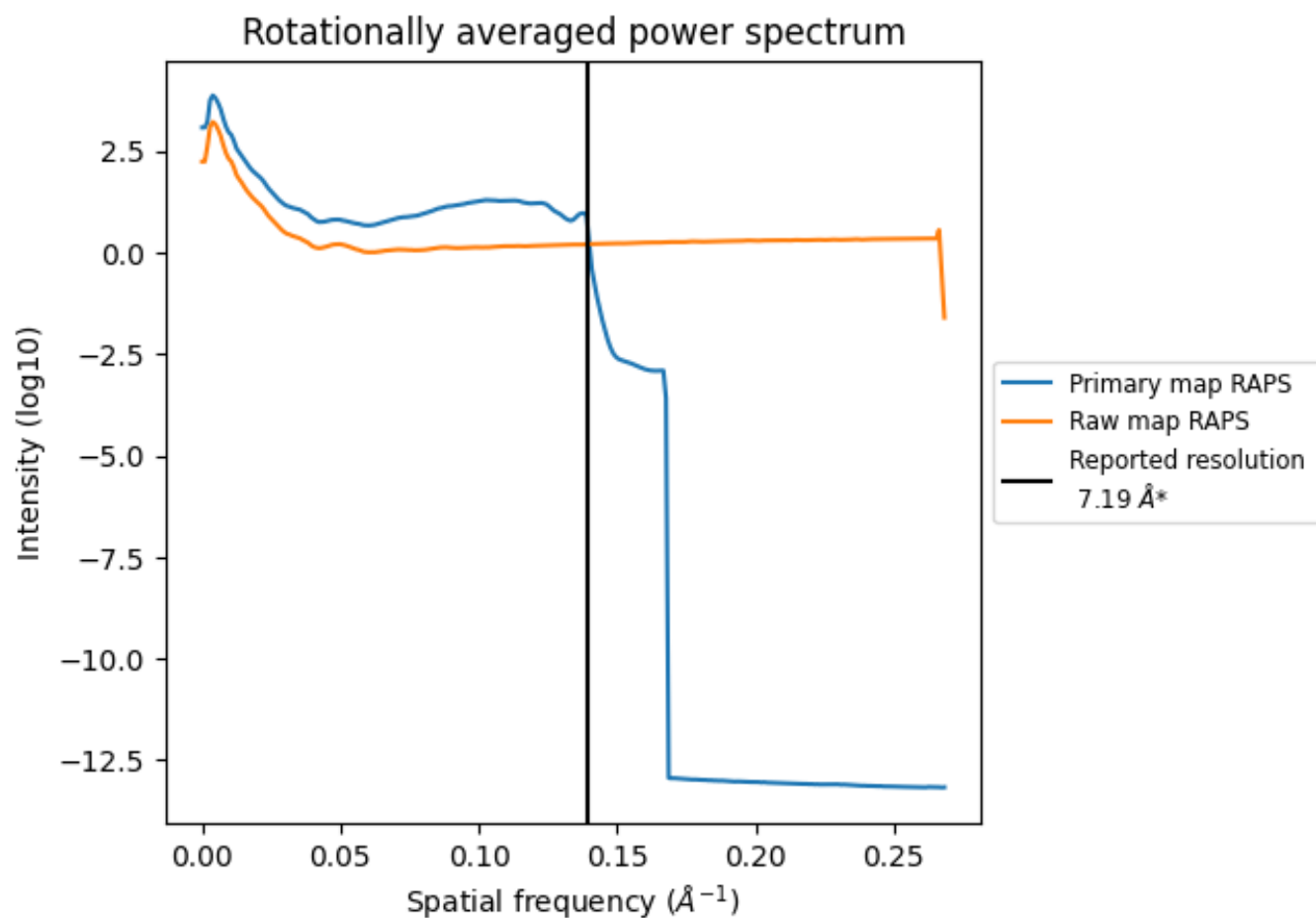
7.2 Volume estimate [i](#)



The volume at the recommended contour level is 657 nm³; this corresponds to an approximate mass of 593 kDa.

The volume estimate graph shows how the enclosed volume varies with the contour level. The recommended contour level is shown as a vertical line and the intersection between the line and the curve gives the volume of the enclosed surface at the given level.

7.3 Rotationally averaged power spectrum ⓘ

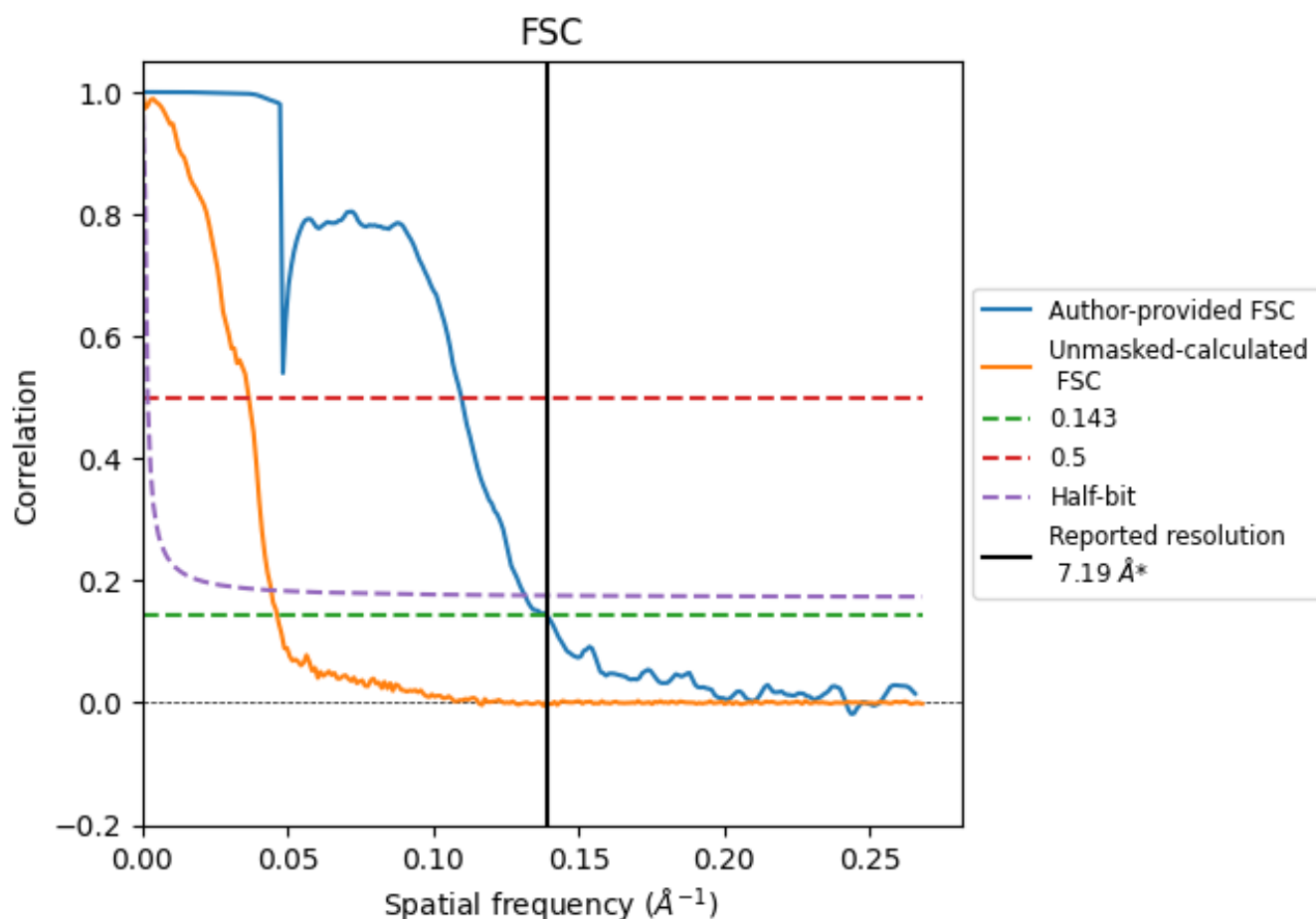


*Reported resolution corresponds to spatial frequency of 0.139 Å⁻¹

8 Fourier-Shell correlation [i](#)

Fourier-Shell Correlation (FSC) is the most commonly used method to estimate the resolution of single-particle and subtomogram-averaged maps. The shape of the curve depends on the imposed symmetry, mask and whether or not the two 3D reconstructions used were processed from a common reference. The reported resolution is shown as a black line. A curve is displayed for the half-bit criterion in addition to lines showing the 0.143 gold standard cut-off and 0.5 cut-off.

8.1 FSC [i](#)



*Reported resolution corresponds to spatial frequency of 0.139 Å⁻¹

8.2 Resolution estimates [i](#)

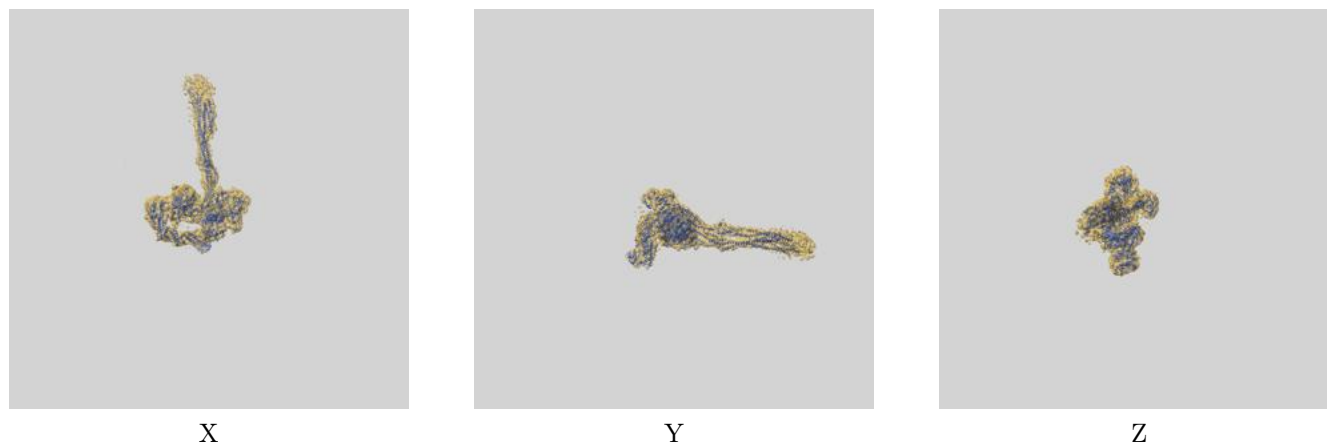
Resolution estimate (Å)	Estimation criterion (FSC cut-off)		
	0.143	0.5	Half-bit
Reported by author	7.19	-	-
Author-provided FSC curve	7.19	9.11	7.59
Unmasked-calculated*	21.55	27.32	22.57

*Resolution estimate based on FSC curve calculated by comparison of deposited half-maps. The value from deposited half-maps intersecting FSC 0.143 CUT-OFF 21.55 differs from the reported value 7.19 by more than 10 %

9 Map-model fit [i](#)

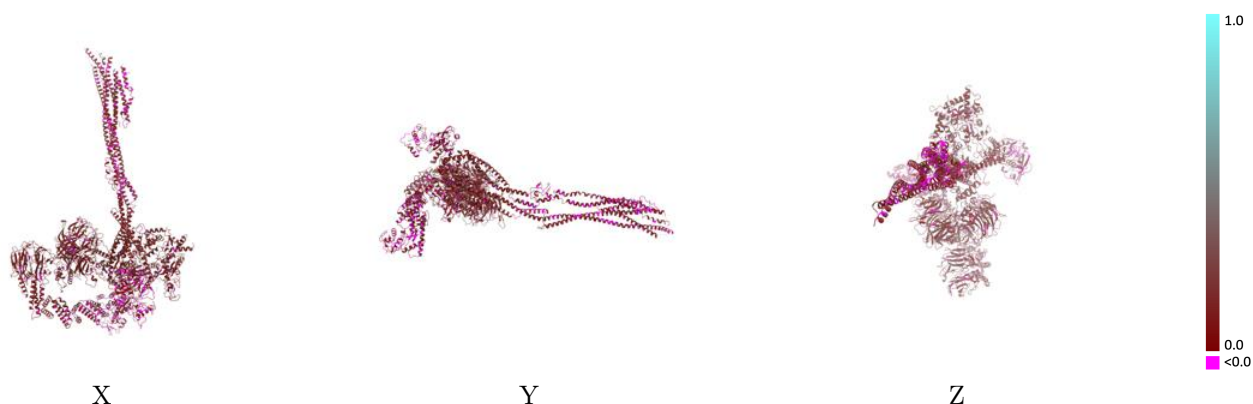
This section contains information regarding the fit between EMDB map EMD-63447 and PDB model 9LWJ. Per-residue inclusion information can be found in section 3 on page 6.

9.1 Map-model overlay [i](#)



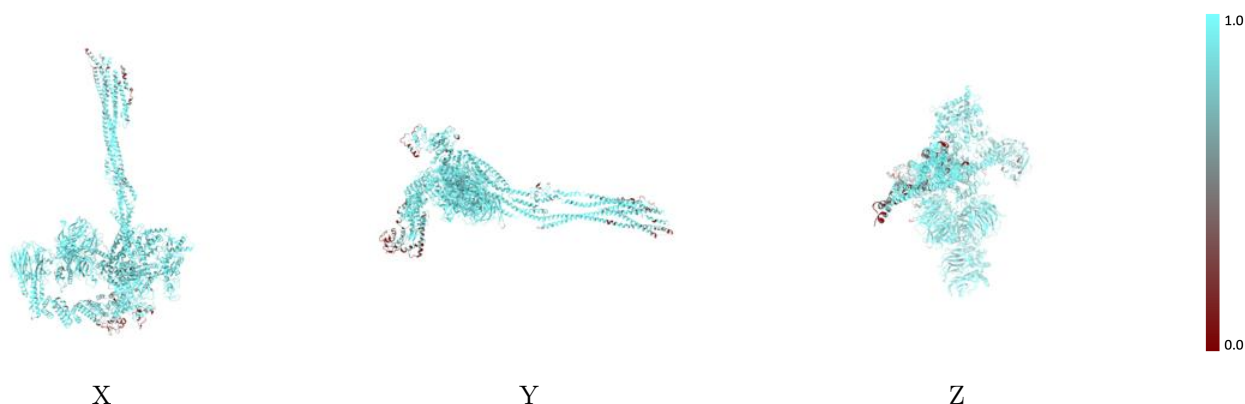
The images above show the 3D surface view of the map at the recommended contour level 1.0 at 50% transparency in yellow overlaid with a ribbon representation of the model coloured in blue. These images allow for the visual assessment of the quality of fit between the atomic model and the map.

9.2 Q-score mapped to coordinate model [i](#)



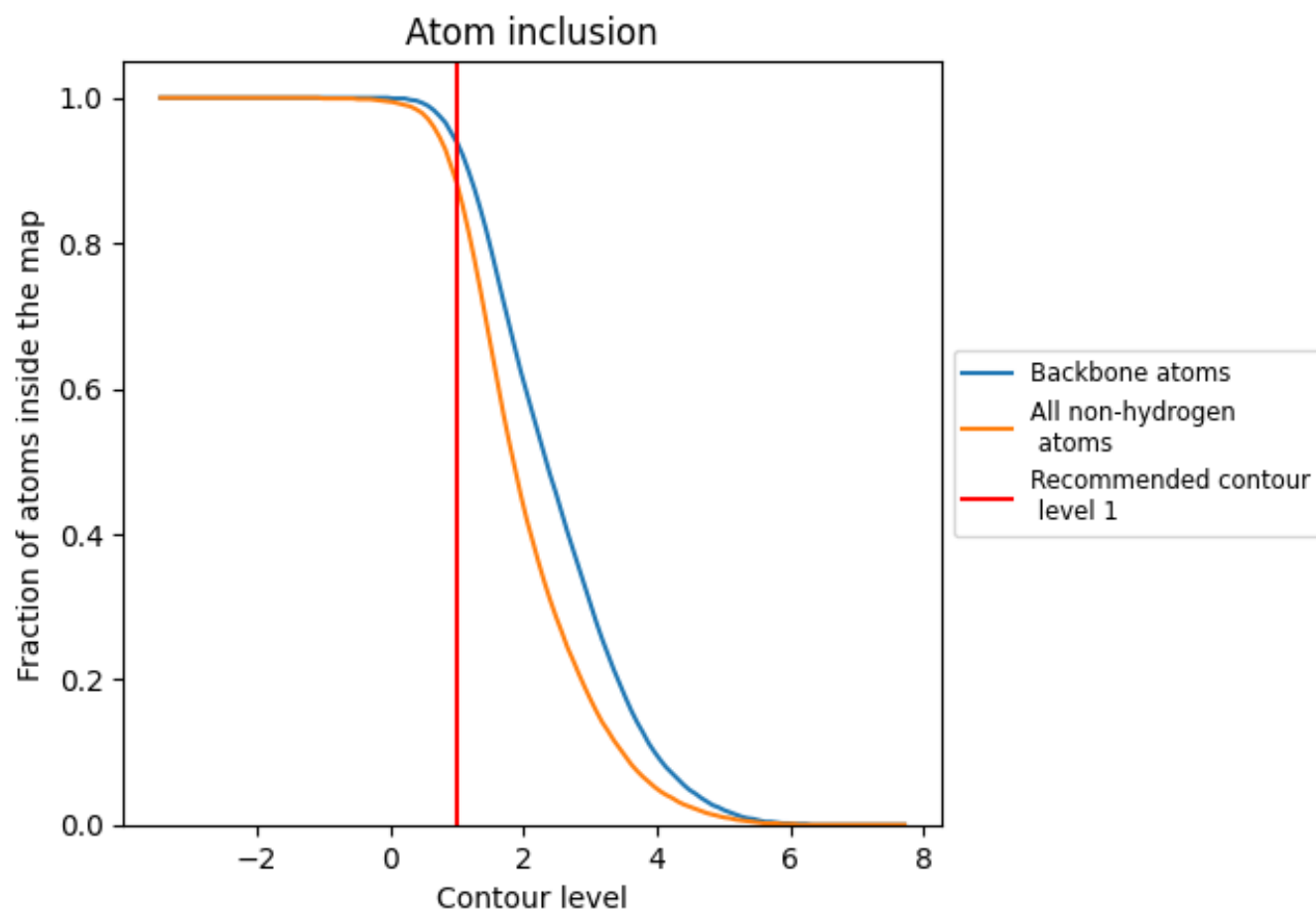
The images above show the model with each residue coloured according to its Q-score. This shows their resolvability in the map with higher Q-score values reflecting better resolvability. Please note: Q-score is calculating the resolvability of atoms, and thus high values are only expected at resolutions at which atoms can be resolved. Low Q-score values may therefore be expected for many entries.

9.3 Atom inclusion mapped to coordinate model [i](#)



The images above show the model with each residue coloured according to its atom inclusion. This shows to what extent they are inside the map at the recommended contour level (1).























9.4 Atom inclusion [i](#)



At the recommended contour level, 94% of all backbone atoms, 88% of all non-hydrogen atoms, are inside the map.

9.5 Map-model fit summary

The table lists the average atom inclusion at the recommended contour level (1) and Q-score for the entire model and for each chain.

Chain	Atom inclusion	Q-score
All	 0.8840	 0.1370
A	 0.8820	 0.1380
B	 0.9470	 0.1680
C	 0.8870	 0.1710
D	 0.8260	 0.1190
E	 0.9330	 0.1780
F	 0.9370	 0.1550
G	 0.7840	 0.1040
H	 0.8630	 0.0690
I	 0.8940	 0.1220
J	 0.7880	 0.0830

