



Full wwPDB X-ray Structure Validation Report ⓘ

Mar 5, 2026 – 08:18 PM UTC

PDB ID : 1DGB / pdb_00001dgb
Title : HUMAN ERYTHROCYTE CATALASE
Authors : Putnam, C.D.; Arvai, A.S.; Bourne, Y.; Tainer, J.A.
Deposited on : 1999-11-23
Resolution : 2.20 Å(reported)

This is a Full wwPDB X-ray Structure Validation Report for a publicly released PDB entry.

We welcome your comments at validation@mail.wwpdb.org

A user guide is available at

<https://www.wwpdb.org/validation/2017/XrayValidationReportHelp>

with specific help available everywhere you see the ⓘ symbol.

The types of validation reports are described at

<http://www.wwpdb.org/validation/2017/FAQs#types>.

The following versions of software and data (see [references ⓘ](#)) were used in the production of this report:

MolProbity : 4-5-2 with Phenix2.0
Mogul : 2022.3.0, CSD as543be (2022)
Xtriage (Phenix) : 2.0
EDS : 3.0
Buster-report : wwPDB partial adaption of 1.1.7 (2018)
Percentile statistics : 20250101.v01 (using entries in the PDB archive January 1st 2025)
CCP4 : 9.0.010 (Gargrove)
Density-Fitness : 1.0.12
Ideal geometry (proteins) : Engh & Huber (2001)
Ideal geometry (DNA, RNA) : Parkinson et al. (1996)
Validation Pipeline (wwPDB-VP) : 2.49

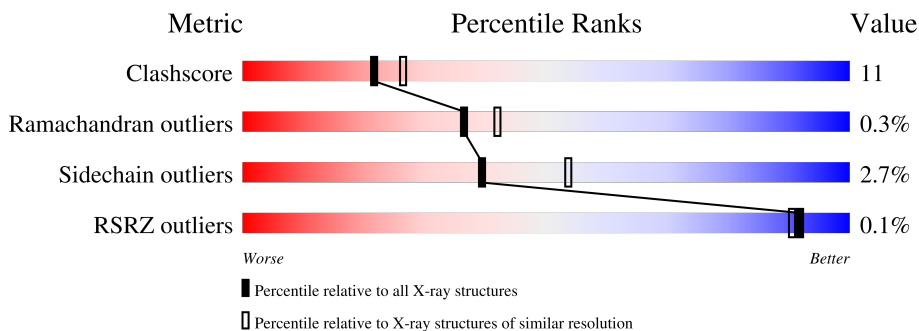
1 Overall quality at a glance

The following experimental techniques were used to determine the structure:

X-RAY DIFFRACTION

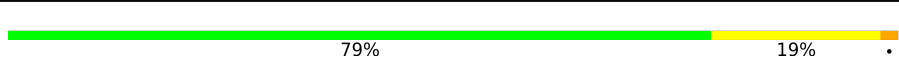


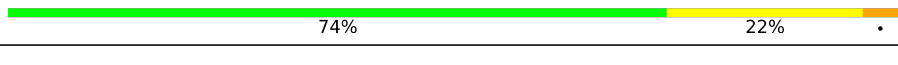
The reported resolution of this entry is 2.20 Å.

Percentile scores (ranging between 0-100) for global validation metrics of the entry are shown in the following graphic. The table shows the number of entries on which the scores are based.



Metric	Whole archive (#Entries)	Similar resolution (#Entries, resolution range(Å))
Clashscore	190562	6851 (2.20-2.20)
Ramachandran outliers	187476	6768 (2.20-2.20)
Sidechain outliers	187428	6769 (2.20-2.20)
RSRZ outliers	180081	6166 (2.20-2.20)

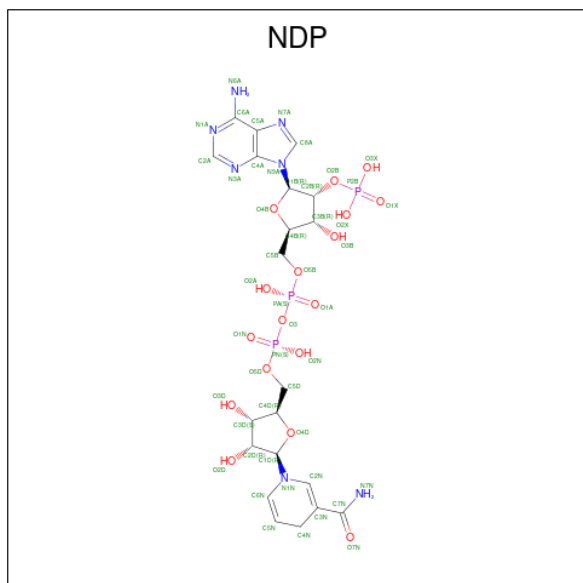
The table below summarises the geometric issues observed across the polymeric chains and their fit to the electron density. The red, orange, yellow and green segments of the lower bar indicate the fraction of residues that contain outliers for ≥ 3 , 2, 1 and 0 types of geometric quality criteria respectively. A grey segment represents the fraction of residues that are not modelled. The numeric value for each fraction is indicated below the corresponding segment, with a dot representing fractions $\leq 5\%$. The upper red bar (where present) indicates the fraction of residues that have poor fit to the electron density. The numeric value is given above the bar.

Mol	Chain	Length	Quality of chain
1	A	498	 79% 19%
1	B	498	 75% 24%
1	C	498	 75% 22%
1	D	498	 74% 22%

Continued from previous page...

Mol	Chain	Residues	Atoms				ZeroOcc	AltConf	
2	C	1	Total	C	Fe	N	O	0	0
			43	34	1	4	4		
2	D	1	Total	C	Fe	N	O	0	0
			43	34	1	4	4		

- Molecule 3 is NADPH DIHYDRO-NICOTINAMIDE-ADENINE-DINUCLEOTIDE PHOSPHATE (CCD ID: NDP) (formula: $C_{21}H_{30}N_7O_{17}P_3$).



Mol	Chain	Residues	Atoms				ZeroOcc	AltConf	
3	A	1	Total	C	N	O	P	0	0
			48	21	7	17	3		
3	C	1	Total	C	N	O	P	0	0
			48	21	7	17	3		

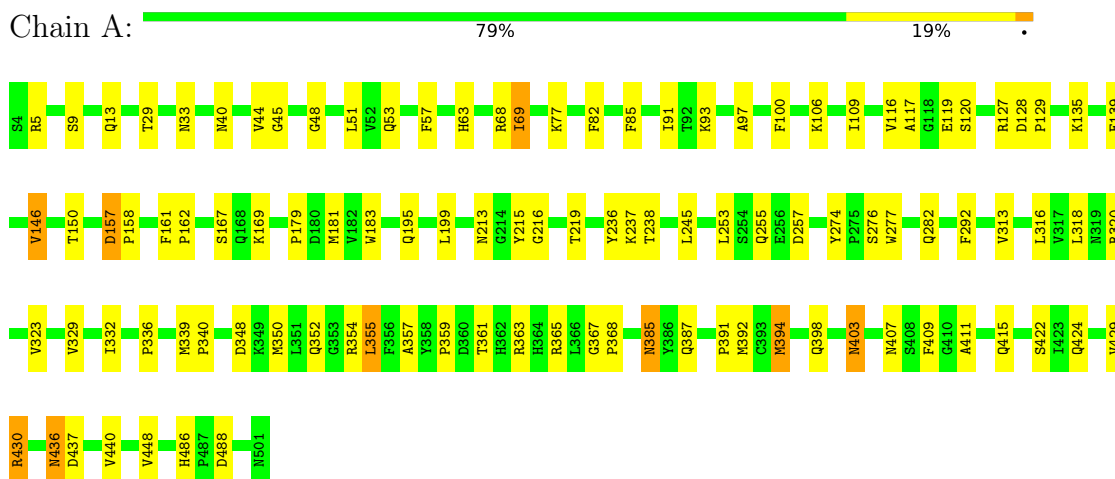
- Molecule 4 is water.

Mol	Chain	Residues	Atoms		ZeroOcc	AltConf
4	A	309	Total	O	0	0
			309	309		
4	B	263	Total	O	0	0
			263	263		
4	C	266	Total	O	0	0
			266	266		
4	D	271	Total	O	0	0
			271	271		

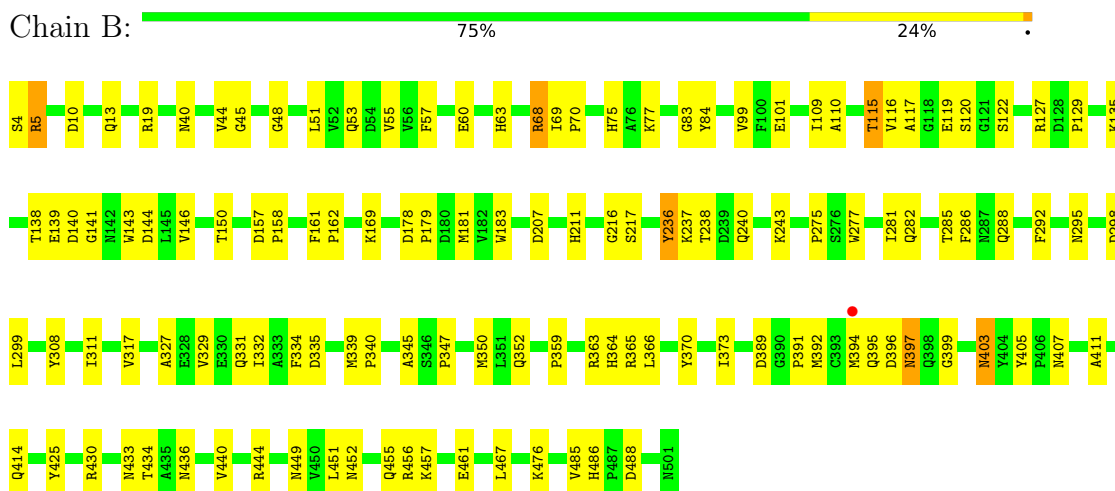
3 Residue-property plots

These plots are drawn for all protein, RNA, DNA and oligosaccharide chains in the entry. The first graphic for a chain summarises the proportions of the various outlier classes displayed in the second graphic. The second graphic shows the sequence view annotated by issues in geometry and electron density. Residues are color-coded according to the number of geometric quality criteria for which they contain at least one outlier: green = 0, yellow = 1, orange = 2 and red = 3 or more. A red dot above a residue indicates a poor fit to the electron density ($RSRZ > 2$). Stretches of 2 or more consecutive residues without any outlier are shown as a green connector. Residues present in the sample, but not in the model, are shown in grey.

- Molecule 1: CATALASE

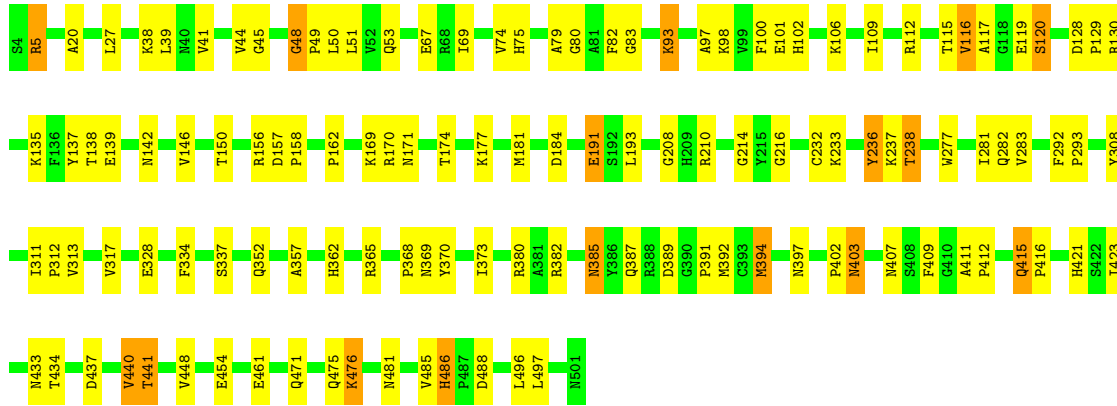


- Molecule 1: CATALASE

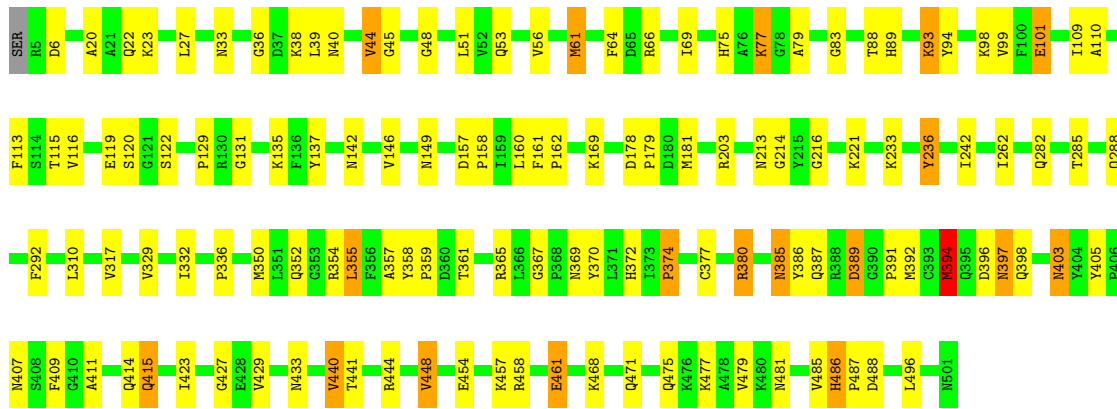


- Molecule 1: CATALASE





● Molecule 1: CATALASE



4 Data and refinement statistics

Property	Value	Source
Space group	P 21 21 21	Depositor
Cell constants a, b, c, α , β , γ	83.50Å 139.93Å 227.89Å 90.00° 90.00° 90.00°	Depositor
Resolution (Å)	20.00 – 2.20 20.00 – 2.20	Depositor EDS
% Data completeness (in resolution range)	(Not available) (20.00-2.20) 90.5 (20.00-2.20)	Depositor EDS
R_{merge}	(Not available)	Depositor
R_{sym}	0.07	Depositor
$\langle I/\sigma(I) \rangle$ ¹	0.11 (at 2.19Å)	Xtrriage
Refinement program	X-PLOR 3.851	Depositor
R, R_{free}	0.172 , 0.227 0.169 , (Not available)	Depositor DCC
R_{free} test set	No test flags present.	wwPDB-VP
Wilson B-factor (Å ²)	64.4	Xtrriage
Anisotropy	0.051	Xtrriage
Bulk solvent k_{sol} (e/Å ³), B_{sol} (Å ²)	0.31 , 54.2	EDS
L-test for twinning ²	$\langle L \rangle = 0.47$, $\langle L^2 \rangle = 0.30$	Xtrriage
Estimated twinning fraction	No twinning to report.	Xtrriage
F_o, F_c correlation	0.98	EDS
Total number of atoms	17443	wwPDB-VP
Average B, all atoms (Å ²)	63.0	wwPDB-VP

Xtrriage's analysis on translational NCS is as follows: *The largest off-origin peak in the Patterson function is 3.82% of the height of the origin peak. No significant pseudotranslation is detected.*

¹Intensities estimated from amplitudes.

²Theoretical values of $\langle |L| \rangle$, $\langle L^2 \rangle$ for acentric reflections are 0.5, 0.333 respectively for untwinned datasets, and 0.375, 0.2 for perfectly twinned datasets.

5 Model quality i

5.1 Standard geometry i

Bond lengths and bond angles in the following residue types are not validated in this section: NDP, HEM

The Z score for a bond length (or angle) is the number of standard deviations the observed value is removed from the expected value. A bond length (or angle) with $|Z| > 5$ is considered an outlier worth inspection. RMSZ is the root-mean-square of all Z scores of the bond lengths (or angles).

Mol	Chain	Bond lengths		Bond angles	
		RMSZ	# Z >5	RMSZ	# Z >5
1	A	0.46	0/4137	1.00	31/5619 (0.6%)
1	B	0.47	0/4137	0.99	16/5619 (0.3%)
1	C	0.47	0/4137	1.04	25/5619 (0.4%)
1	D	0.48	1/4131 (0.0%)	1.02	28/5611 (0.5%)
All	All	0.47	1/16542 (0.0%)	1.01	100/22468 (0.4%)

All (1) bond length outliers are listed below:

Mol	Chain	Res	Type	Atoms	Z	Observed(Å)	Ideal(Å)
1	D	61	MET	SD-CE	-5.41	1.66	1.79

All (100) bond angle outliers are listed below:

Mol	Chain	Res	Type	Atoms	Z	Observed(°)	Ideal(°)
1	C	440	VAL	N-CA-C	11.19	120.46	111.62
1	D	216	GLY	N-CA-C	-7.85	104.92	114.66
1	D	415	GLN	CA-C-N	7.77	129.55	119.84
1	D	415	GLN	C-N-CA	7.77	129.55	119.84
1	A	436	ASN	N-CA-C	7.66	121.46	112.72
1	D	440	VAL	N-CA-C	7.66	117.67	111.62
1	C	116	VAL	N-CA-C	7.39	117.46	111.62
1	C	357	ALA	N-CA-C	7.39	119.98	111.11
1	A	157	ASP	CA-C-N	7.30	126.83	119.24
1	A	157	ASP	C-N-CA	7.30	126.83	119.24
1	C	216	GLY	N-CA-C	-7.19	105.75	114.66
1	D	394	MET	N-CA-C	7.13	121.69	112.92
1	C	394	MET	N-CA-C	7.12	121.82	113.20
1	C	48	GLY	CA-C-N	6.94	126.90	120.03
1	C	48	GLY	C-N-CA	6.94	126.90	120.03
1	B	216	GLY	N-CA-C	-6.74	106.30	114.66

Continued on next page...

Continued from previous page...

Mol	Chain	Res	Type	Atoms	Z	Observed(°)	Ideal(°)
1	D	427	GLY	N-CA-C	-6.72	103.91	111.63
1	A	29	THR	N-CA-C	-6.71	101.88	110.53
1	C	177	LYS	N-CA-C	-6.66	100.57	110.23
1	A	448	VAL	N-CA-C	6.66	117.28	110.82
1	C	117	ALA	N-CA-C	6.57	118.32	111.03
1	A	216	GLY	N-CA-C	-6.54	106.75	115.32
1	C	184	ASP	N-CA-C	-6.51	104.11	111.14
1	B	117	ALA	N-CA-C	6.41	118.06	111.14
1	D	6	ASP	CA-C-N	6.39	125.89	119.24
1	D	6	ASP	C-N-CA	6.39	125.89	119.24
1	B	449	ASN	N-CA-C	6.21	120.94	112.68
1	A	409	PHE	N-CA-C	6.15	120.41	112.41
1	B	308	TYR	CA-C-N	6.13	126.14	119.89
1	B	308	TYR	C-N-CA	6.13	126.14	119.89
1	B	101	GLU	N-CA-C	6.10	120.27	112.34
1	A	323	VAL	N-CA-C	-6.09	105.13	111.58
1	D	45	GLY	CA-C-N	6.07	125.55	119.24
1	D	45	GLY	C-N-CA	6.07	125.55	119.24
1	A	440	VAL	N-CA-C	6.04	121.90	109.34
1	A	146	VAL	N-CA-C	6.01	112.64	106.21
1	C	308	TYR	CA-C-N	5.99	125.95	119.78
1	C	308	TYR	C-N-CA	5.99	125.95	119.78
1	C	45	GLY	CA-C-N	5.96	125.44	119.24
1	C	45	GLY	C-N-CA	5.96	125.44	119.24
1	C	448	VAL	N-CA-C	5.95	116.59	110.82
1	A	437	ASP	N-CA-C	-5.88	102.89	110.19
1	A	357	ALA	N-CA-C	5.85	118.16	111.02
1	B	68	ARG	N-CA-C	5.80	118.87	110.28
1	D	377	CYS	N-CA-C	5.79	117.11	109.93
1	A	430	ARG	N-CA-C	5.78	115.74	108.45
1	D	448	VAL	N-CA-C	5.78	117.29	111.00
1	C	120[A]	SER	N-CA-C	5.67	119.29	112.38
1	C	120[B]	SER	N-CA-C	5.67	119.29	112.38
1	B	45	GLY	CA-C-N	5.66	125.12	119.24
1	B	45	GLY	C-N-CA	5.66	125.12	119.24
1	D	357	ALA	N-CA-C	5.63	120.61	111.37
1	A	117	ALA	N-CA-C	5.55	117.41	111.36
1	A	282	GLN	N-CA-C	-5.53	101.17	109.95
1	B	115	THR	N-CA-C	-5.51	101.48	109.31
1	D	22	GLN	N-CA-C	5.51	118.46	110.42
1	C	415	GLN	CA-C-N	5.49	126.70	119.84
1	C	415	GLN	C-N-CA	5.49	126.70	119.84

Continued on next page...

Continued from previous page...

Mol	Chain	Res	Type	Atoms	Z	Observed(°)	Ideal(°)
1	D	486	HIS	CA-C-N	5.47	125.56	119.32
1	D	486	HIS	C-N-CA	5.47	125.56	119.32
1	A	183	TRP	N-CA-C	5.41	118.09	111.82
1	D	33	ASN	CA-C-N	5.38	125.30	119.76
1	D	33	ASN	C-N-CA	5.38	125.30	119.76
1	D	101	GLU	N-CA-C	5.36	119.31	112.34
1	B	399	GLY	N-CA-C	5.35	121.08	111.34
1	D	409	PHE	N-CA-C	5.34	119.40	111.87
1	C	157	ASP	CA-C-N	5.33	125.40	119.32
1	C	157	ASP	C-N-CA	5.33	125.40	119.32
1	A	292	PHE	CA-C-N	5.30	125.62	119.47
1	A	292	PHE	C-N-CA	5.30	125.62	119.47
1	B	436	ASN	N-CA-C	5.28	119.35	113.02
1	B	292	PHE	CA-C-N	5.25	126.41	119.84
1	B	292	PHE	C-N-CA	5.25	126.41	119.84
1	A	33	ASN	CA-C-N	5.25	125.17	119.76
1	A	33	ASN	C-N-CA	5.25	125.17	119.76
1	D	389	ASP	CB-CA-C	-5.25	108.96	115.89
1	A	69	ILE	N-CA-C	-5.22	103.11	109.01
1	A	219	THR	N-CA-C	-5.22	100.80	109.46
1	D	389	ASP	N-CA-C	5.20	117.75	109.02
1	B	282	GLN	N-CA-C	-5.19	101.70	109.95
1	A	367	GLY	CA-C-N	5.19	124.63	119.24
1	A	367	GLY	C-N-CA	5.19	124.63	119.24
1	C	409	PHE	N-CA-C	5.18	119.15	112.41
1	C	485	VAL	N-CA-C	-5.17	105.67	110.53
1	B	440	VAL	N-CA-C	5.16	120.07	109.34
1	D	367	GLY	CA-C-N	5.14	124.58	119.24
1	D	367	GLY	C-N-CA	5.14	124.58	119.24
1	A	48	GLY	CA-C-N	5.14	125.11	120.03
1	A	48	GLY	C-N-CA	5.14	125.11	120.03
1	C	486	HIS	CA-C-N	5.13	124.57	119.24
1	C	486	HIS	C-N-CA	5.13	124.57	119.24
1	A	45	GLY	CA-C-N	5.11	124.90	119.28
1	A	45	GLY	C-N-CA	5.11	124.90	119.28
1	D	23	LYS	N-CA-C	-5.10	103.95	110.53
1	D	292	PHE	CA-C-N	5.10	126.22	119.84
1	D	292	PHE	C-N-CA	5.10	126.22	119.84
1	D	56	VAL	N-CA-C	-5.08	105.02	110.36
1	A	257	ASP	CA-C-N	5.02	124.68	119.56
1	A	257	ASP	C-N-CA	5.02	124.68	119.56
1	A	93	LYS	N-CA-C	-5.00	106.68	112.89

There are no chirality outliers.

There are no planarity outliers.

5.2 Too-close contacts

In the following table, the Non-H and H(model) columns list the number of non-hydrogen atoms and hydrogen atoms in the chain respectively. The H(added) column lists the number of hydrogen atoms added and optimized by MolProbity. The Clashes column lists the number of clashes within the asymmetric unit, whereas Symm-Clashes lists symmetry-related clashes.

Mol	Chain	Non-H	H(model)	H(added)	Clashes	Symm-Clashes
1	A	4018	0	3845	85	0
1	B	4018	0	3845	111	0
1	C	4018	0	3845	104	0
1	D	4012	0	3840	109	0
2	A	43	0	30	1	0
2	B	43	0	30	0	0
2	C	43	0	30	0	0
2	D	43	0	30	1	0
3	A	48	0	26	0	0
3	C	48	0	26	0	0
4	A	309	0	0	18	0
4	B	263	0	0	10	0
4	C	266	0	0	12	0
4	D	271	0	0	15	0
All	All	17443	0	15547	343	0

The all-atom clashscore is defined as the number of clashes found per 1000 atoms (including hydrogen atoms). The all-atom clashscore for this structure is 11.

All (343) close contacts within the same asymmetric unit are listed below, sorted by their clash magnitude.

Atom-1	Atom-2	Interatomic distance (Å)	Clash overlap (Å)
1:B:138:THR:HG22	1:B:140:ASP:H	1.17	1.05
1:B:452:ASN:H	1:B:455:GLN:HE21	0.99	0.92
1:A:13:GLN:HE21	1:C:471:GLN:HE22	1.12	0.92
1:A:120[B]:SER:O	1:C:120[B]:SER:O	1.89	0.91
1:A:53:GLN:HE21	1:D:352:GLN:HE22	1.19	0.89
1:A:385:ASN:H	1:A:398:GLN:HE22	1.19	0.88
1:A:116:VAL:HG21	1:A:129:PRO:HG2	1.58	0.84
1:B:392:MET:SD	1:B:394:MET:HE1	2.18	0.83
1:B:486:HIS:HD2	1:B:488:ASP:H	1.25	0.82

Continued on next page...

Continued from previous page...

Atom-1	Atom-2	Interatomic distance (Å)	Clash overlap (Å)
1:B:13:GLN:HE21	1:D:471:GLN:HE22	1.27	0.81
1:B:452:ASN:H	1:B:455:GLN:NE2	1.78	0.81
1:D:392:MET:HE3	1:D:394:MET:HE1	1.61	0.81
1:B:138:THR:HG22	1:B:140:ASP:N	1.95	0.80
1:B:407:ASN:HD21	1:B:411:ALA:HB3	1.48	0.79
1:A:63:HIS:HE1	1:D:369:ASN:HD21	1.31	0.78
1:D:389:ASP:H	1:D:397:ASN:HD21	1.32	0.78
1:B:116:VAL:HG21	1:B:129:PRO:HG2	1.66	0.77
1:B:452:ASN:N	1:B:455:GLN:HE21	1.81	0.74
1:A:13:GLN:NE2	1:C:471:GLN:HE22	1.85	0.73
1:B:63:HIS:HE1	1:C:369:ASN:HD21	1.34	0.73
1:B:53:GLN:HE21	1:C:352:GLN:HE22	1.37	0.72
1:B:120[B]:SER:O	1:D:119:GLU:HB2	1.89	0.72
1:C:385:ASN:HD22	1:C:387:GLN:H	1.36	0.72
1:D:486:HIS:HD2	1:D:488:ASP:H	1.36	0.72
1:D:352:GLN:HA	1:D:355:LEU:HD22	1.72	0.71
1:C:486:HIS:HD2	1:C:488:ASP:H	1.37	0.71
1:A:392:MET:HE1	1:D:370:TYR:HA	1.73	0.71
1:A:486:HIS:HD2	1:A:488:ASP:H	1.39	0.70
1:A:13:GLN:HE21	1:C:471:GLN:NE2	1.89	0.70
1:A:486:HIS:CD2	1:A:488:ASP:H	2.09	0.70
1:D:385:ASN:H	1:D:398:GLN:HE22	1.37	0.69
1:B:392:MET:HE1	1:C:370:TYR:HA	1.74	0.69
1:D:158:PRO:HG3	1:D:350:MET:HA	1.74	0.69
1:B:366:LEU:O	1:C:392:MET:HE3	1.93	0.68
1:C:475:GLN:HE21	1:C:497:LEU:HD13	1.58	0.68
1:B:158:PRO:HG3	1:B:350:MET:HA	1.75	0.68
1:C:382:ARG:HG3	1:C:382:ARG:HH11	1.58	0.67
1:B:425:TYR:HA	4:B:1356:HOH:O	1.94	0.67
1:D:454:GLU:HB3	1:D:458:ARG:HH21	1.61	0.66
1:D:169:LYS:HB3	4:D:1401:HOH:O	1.93	0.66
1:C:486:HIS:CD2	1:C:488:ASP:H	2.13	0.66
1:B:352:GLN:HE22	1:C:53:GLN:HE21	1.44	0.65
1:B:486:HIS:CD2	1:B:488:ASP:H	2.13	0.65
1:C:385:ASN:ND2	1:C:387:GLN:H	1.95	0.65
1:A:9:SER:HB3	4:A:1307:HOH:O	1.98	0.64
1:B:138:THR:HB	1:B:141:GLY:O	1.98	0.64
1:D:116:VAL:HG21	1:D:129:PRO:HG2	1.79	0.64
1:B:68:ARG:HA	4:B:1292:HOH:O	1.98	0.64
1:D:157:ASP:HB3	1:D:160:LEU:HD12	1.79	0.63
1:D:486:HIS:CD2	1:D:488:ASP:H	2.17	0.63

Continued on next page...

Continued from previous page...

Atom-1	Atom-2	Interatomic distance (Å)	Clash overlap (Å)
1:B:407:ASN:ND2	1:B:411:ALA:HB3	2.14	0.63
1:A:407:ASN:HD21	1:A:411:ALA:HB3	1.63	0.62
1:A:181:MET:HE3	1:B:403:ASN:HD21	1.63	0.62
1:B:63:HIS:HE1	1:C:369:ASN:ND2	1.98	0.62
1:B:63:HIS:HD2	4:B:1237:HOH:O	1.82	0.62
1:B:53:GLN:HE21	1:C:352:GLN:NE2	1.95	0.61
1:A:53:GLN:HE21	1:D:352:GLN:NE2	1.95	0.61
1:D:407:ASN:HD21	1:D:411:ALA:HB3	1.65	0.61
1:B:352:GLN:NE2	1:C:53:GLN:HE21	1.99	0.61
1:A:120[B]:SER:O	1:C:119:GLU:HB2	2.00	0.61
1:B:237:LYS:HE2	4:B:1423:HOH:O	2.00	0.61
1:D:385:ASN:ND2	1:D:387:GLN:H	1.99	0.60
1:B:44:VAL:HG12	1:D:429:VAL:HG22	1.83	0.60
1:D:161:PHE:HB3	1:D:162:PRO:HD3	1.84	0.60
1:C:83:GLY:HA3	1:C:317:VAL:O	2.02	0.59
4:A:1345:HOH:O	1:B:53:GLN:HG3	2.02	0.59
1:B:329:VAL:O	1:B:332:ILE:HG22	2.02	0.59
1:D:385:ASN:HD22	1:D:385:ASN:C	2.11	0.59
1:A:361:THR:HG21	2:A:1200:HEM:HBA1	1.83	0.59
1:A:392:MET:SD	1:A:394:MET:HE1	2.43	0.59
1:B:394:MET:HG2	1:C:394:MET:HG3	1.84	0.59
1:C:407:ASN:HD21	1:C:411:ALA:HB3	1.68	0.59
1:C:233:LYS:HB2	1:C:282:GLN:HB2	1.84	0.59
1:A:385:ASN:ND2	1:A:387:GLN:H	1.99	0.58
1:A:352:GLN:O	1:A:355:LEU:HB2	2.03	0.58
1:B:120[B]:SER:O	1:D:119:GLU:CB	2.51	0.58
4:A:1494:HOH:O	1:D:53:GLN:HG3	2.04	0.57
1:A:385:ASN:C	1:A:385:ASN:HD22	2.12	0.57
1:A:486:HIS:HD2	1:A:488:ASP:N	2.00	0.56
1:B:83:GLY:HA3	1:B:317:VAL:O	2.06	0.56
1:B:63:HIS:CE1	1:C:369:ASN:HD21	2.21	0.56
1:A:158:PRO:HG3	1:A:350:MET:HA	1.88	0.56
1:A:237:LYS:HE3	4:A:1533:HOH:O	2.04	0.56
1:D:454:GLU:HB3	1:D:458:ARG:NH2	2.21	0.56
1:A:403:ASN:HD21	1:B:181:MET:HE3	1.71	0.56
1:C:106:LYS:HE3	4:C:1485:HOH:O	2.07	0.55
1:D:385:ASN:HD22	1:D:387:GLN:H	1.54	0.55
1:C:137:TYR:HA	1:C:142:ASN:ND2	2.21	0.55
1:C:49:PRO:HB2	1:D:51:LEU:HD12	1.88	0.55
1:B:389:ASP:H	1:B:397:ASN:HD21	1.53	0.55
1:B:19:ARG:HG3	1:B:19:ARG:HH11	1.72	0.55

Continued on next page...

Continued from previous page...

Atom-1	Atom-2	Interatomic distance (Å)	Clash overlap (Å)
1:C:191:GLU:H	1:C:191:GLU:CD	2.15	0.55
1:A:329:VAL:O	1:A:332:ILE:HG22	2.06	0.54
1:A:352:GLN:HE22	1:D:53:GLN:HE21	1.55	0.54
1:A:394:MET:SD	1:D:394:MET:HE2	2.47	0.54
1:B:116:VAL:CG2	1:B:129:PRO:HG2	2.37	0.54
1:C:75:HIS:HA	1:C:115:THR:O	2.08	0.54
1:C:146:VAL:HG22	1:C:334:PHE:HB3	1.89	0.54
1:B:44:VAL:O	1:B:48:GLY:HA3	2.08	0.54
1:C:139:GLU:HA	1:C:380:ARG:O	2.08	0.54
1:B:451:LEU:HA	1:B:455:GLN:NE2	2.22	0.54
1:A:352:GLN:HA	1:A:355:LEU:HD22	1.90	0.54
1:C:476:LYS:HE3	1:C:476:LYS:HA	1.89	0.54
1:B:161:PHE:HB3	1:B:162:PRO:HD3	1.90	0.53
1:B:13:GLN:NE2	1:D:471:GLN:HE22	2.03	0.53
1:C:128:ASP:O	1:C:130:ARG:NH1	2.41	0.53
1:B:395:GLN:HG3	1:B:396:ASP:H	1.72	0.53
1:C:237:LYS:HE2	4:C:1483:HOH:O	2.07	0.53
1:A:403:ASN:HD21	1:B:181:MET:CE	2.22	0.53
1:D:39:LEU:HB2	4:D:1378:HOH:O	2.09	0.52
1:A:394:MET:HG2	1:D:394:MET:HG2	1.91	0.52
1:B:110:ALA:HB3	1:B:135:LYS:HB3	1.90	0.52
1:B:169:LYS:HB3	4:B:1256:HOH:O	2.08	0.52
1:D:203:ARG:HE	1:D:242:ILE:HG21	1.74	0.52
1:D:444:ARG:HD3	1:D:485:VAL:O	2.10	0.52
1:C:334:PHE:O	1:C:362:HIS:HE1	1.92	0.52
1:B:391:PRO:HG3	1:C:69:ILE:HG22	1.92	0.52
1:D:329:VAL:O	1:D:332:ILE:HG22	2.10	0.52
1:A:486:HIS:CD2	1:A:488:ASP:HB2	2.45	0.52
1:B:486:HIS:HD2	1:B:488:ASP:N	2.00	0.52
1:B:75:HIS:HA	1:B:115:THR:O	2.10	0.51
1:C:403:ASN:HD21	1:D:181:MET:HE3	1.75	0.51
1:A:40:ASN:CG	1:C:433:ASN:HA	2.35	0.51
1:A:63:HIS:HE1	1:D:369:ASN:ND2	2.03	0.51
1:D:415:GLN:HG3	1:D:415:GLN:O	2.10	0.51
1:C:50:LEU:HD12	1:C:51:LEU:H	1.76	0.51
1:D:365:ARG:HD2	4:D:1326:HOH:O	2.10	0.51
1:A:213:ASN:OD1	1:A:238:THR:HG22	2.10	0.51
1:C:403:ASN:C	1:C:403:ASN:HD22	2.16	0.51
1:B:392:MET:HE2	1:C:373:ILE:HD11	1.92	0.51
1:D:83:GLY:HA3	1:D:317:VAL:O	2.10	0.51
1:C:5:ARG:H	1:C:5:ARG:HD2	1.76	0.50

Continued on next page...

Continued from previous page...

Atom-1	Atom-2	Interatomic distance (Å)	Clash overlap (Å)
1:A:429:VAL:HG13	1:C:51:LEU:HD22	1.92	0.50
1:C:116:VAL:HG21	1:C:129:PRO:HG2	1.93	0.50
1:B:211:HIS:CG	1:B:243:LYS:HB3	2.47	0.50
1:C:93:LYS:HB2	1:C:93:LYS:NZ	2.26	0.50
1:C:402:PRO:HA	4:C:1362:HOH:O	2.11	0.50
1:D:88:THR:OG1	1:D:89:HIS:HD2	1.95	0.50
1:D:93:LYS:HE3	1:D:94:TYR:CZ	2.46	0.50
1:B:146:VAL:HG22	1:B:334:PHE:HB3	1.94	0.50
1:A:40:ASN:OD1	1:C:433:ASN:HA	2.10	0.50
1:A:82:PHE:HB2	1:A:320:ARG:HB3	1.94	0.50
1:B:40:ASN:ND2	1:D:433:ASN:HA	2.26	0.50
1:B:285:THR:OG1	1:B:288:GLN:HG3	2.11	0.50
1:B:359:PRO:O	1:B:363:ARG:HG3	2.11	0.50
1:A:51:LEU:HD23	1:B:51:LEU:HD13	1.94	0.50
1:D:358:TYR:O	1:D:361:THR:HG22	2.12	0.50
1:D:109:ILE:HA	1:D:135:LYS:O	2.12	0.50
1:B:127:ARG:NH1	4:B:1419:HOH:O	2.44	0.49
1:C:208:GLY:HA3	4:C:1471:HOH:O	2.11	0.49
1:B:444:ARG:HD3	1:B:485:VAL:O	2.11	0.49
1:B:236:TYR:N	1:B:236:TYR:CD2	2.80	0.49
1:D:61:MET:HE1	1:D:64:PHE:CD2	2.47	0.49
1:D:61:MET:CE	1:D:64:PHE:CD2	2.96	0.49
1:A:63:HIS:HD2	4:D:1397:HOH:O	1.95	0.49
1:A:97:ALA:HB3	1:A:100:PHE:CD2	2.47	0.49
1:B:452:ASN:O	1:B:456:ARG:HG3	2.12	0.49
1:A:391:PRO:HG3	1:D:69:ILE:HG22	1.93	0.49
1:B:217:SER:HB3	1:B:299:LEU:HD11	1.95	0.49
1:B:285:THR:HB	4:B:1445:HOH:O	2.11	0.49
1:A:161:PHE:HB3	1:A:162:PRO:HD3	1.94	0.49
1:B:373:ILE:HD11	1:C:392:MET:HE2	1.94	0.49
1:B:286:PHE:N	1:B:286:PHE:CD1	2.81	0.48
1:D:214:GLY:HA3	1:D:236:TYR:CE1	2.48	0.48
1:D:352:GLN:O	1:D:355:LEU:HB2	2.13	0.48
1:D:481:ASN:HB2	4:D:1301:HOH:O	2.12	0.48
1:B:138:THR:CG2	1:B:139:GLU:N	2.77	0.48
1:B:77:LYS:HD2	1:B:122:SER:O	2.14	0.48
1:B:286:PHE:N	1:B:286:PHE:HD1	2.11	0.48
1:B:55:VAL:HG11	1:C:337:SER:HB2	1.95	0.48
1:B:144:ASP:HB2	1:B:335:ASP:O	2.13	0.48
1:D:407:ASN:ND2	1:D:411:ALA:HB3	2.28	0.48
1:A:350:MET:O	1:A:354:ARG:HG3	2.14	0.48

Continued on next page...

Continued from previous page...

Atom-1	Atom-2	Interatomic distance (Å)	Clash overlap (Å)
1:C:109:ILE:HA	1:C:135:LYS:O	2.13	0.48
1:C:238:THR:HA	1:C:277:TRP:CD1	2.48	0.47
1:D:389:ASP:N	1:D:397:ASN:HD21	2.07	0.47
1:D:440:VAL:HG23	1:D:441:THR:N	2.28	0.47
1:C:80:GLY:HA3	4:C:1446:HOH:O	2.13	0.47
1:D:405:TYR:OH	1:D:414:GLN:HG2	2.15	0.47
1:A:85:PHE:O	1:A:106:LYS:HA	2.14	0.47
1:B:394:MET:CG	1:C:394:MET:HG3	2.45	0.47
1:D:461:GLU:HA	1:D:496:LEU:HD13	1.95	0.47
1:A:415:GLN:O	1:D:36:GLY:HA2	2.14	0.47
1:A:238:THR:HA	1:A:277:TRP:CD1	2.49	0.47
1:A:352:GLN:NE2	1:D:53:GLN:HE21	2.13	0.47
1:D:98:LYS:HD3	4:D:1442:HOH:O	2.14	0.47
1:A:69:ILE:HG22	1:D:391:PRO:HG3	1.96	0.47
1:A:116:VAL:CG2	1:A:129:PRO:HG2	2.38	0.47
1:A:128:ASP:OD2	1:A:129:PRO:HD2	2.15	0.47
1:A:359:PRO:HG2	4:A:1392:HOH:O	2.14	0.47
1:A:53:GLN:NE2	4:A:1488:HOH:O	2.48	0.46
1:A:385:ASN:HD22	1:A:387:GLN:H	1.63	0.46
1:A:436:ASN:HB2	4:A:1595:HOH:O	2.15	0.46
1:B:178:ASP:HA	1:B:179:PRO:HD2	1.81	0.46
1:C:461:GLU:HA	1:C:496:LEU:HD13	1.95	0.46
1:B:19:ARG:HG3	1:B:19:ARG:NH1	2.30	0.46
1:C:181:MET:HE3	1:D:403:ASN:HD21	1.80	0.46
1:B:433:ASN:HA	1:D:40:ASN:ND2	2.30	0.46
1:D:350:MET:HE3	2:D:1203:HEM:HAB	1.97	0.46
1:D:359:PRO:HG2	4:D:1308:HOH:O	2.15	0.46
1:C:486:HIS:HD2	1:C:488:ASP:N	2.10	0.46
1:D:444:ARG:O	1:D:448:VAL:HG23	2.15	0.46
1:C:97:ALA:HB3	1:C:100:PHE:CD2	2.51	0.46
1:D:233:LYS:HB2	1:D:282:GLN:HB2	1.98	0.46
1:B:119:GLU:HB2	1:D:120[B]:SER:O	2.16	0.45
1:C:475:GLN:NE2	1:C:497:LEU:HD13	2.30	0.45
1:D:285:THR:OG1	1:D:288:GLN:HG3	2.15	0.45
1:C:232:CYS:HA	1:C:282:GLN:O	2.16	0.45
1:D:352:GLN:HG3	4:D:1448:HOH:O	2.16	0.45
1:D:457:LYS:O	1:D:461:GLU:HG2	2.16	0.45
1:A:215:TYR:HB3	4:A:1389:HOH:O	2.17	0.45
1:A:394:MET:HE3	1:D:372:HIS:HB2	1.97	0.45
1:C:365:ARG:HD2	4:C:1308:HOH:O	2.17	0.45
1:D:110:ALA:HB3	1:D:135:LYS:HB3	1.99	0.45

Continued on next page...

Continued from previous page...

Atom-1	Atom-2	Interatomic distance (Å)	Clash overlap (Å)
1:A:57:PHE:CE1	1:C:158:PRO:HB2	2.51	0.45
1:B:138:THR:HG22	1:B:139:GLU:N	2.32	0.45
1:C:415:GLN:HA	1:C:416:PRO:HD3	1.87	0.45
1:B:370:TYR:HA	1:C:392:MET:HE1	1.98	0.45
1:A:339:MET:HA	1:A:340:PRO:HD3	1.73	0.45
1:A:365:ARG:HD2	4:A:1449:HOH:O	2.16	0.45
1:C:210:ARG:HD2	4:C:1365:HOH:O	2.16	0.45
1:A:195:GLN:HA	1:A:195:GLN:OE1	2.17	0.45
1:C:171:ASN:HB3	1:C:174:THR:OG1	2.16	0.45
1:C:193:LEU:HD11	1:C:481:ASN:HB3	1.98	0.45
1:D:98:LYS:O	1:D:101:GLU:HG2	2.16	0.45
1:C:389:ASP:H	1:C:397:ASN:HD21	1.65	0.45
1:A:336:PRO:HD2	4:A:1508:HOH:O	2.16	0.45
1:C:283:VAL:HG23	1:C:311:ILE:HD12	1.98	0.45
1:C:403:ASN:C	1:C:403:ASN:ND2	2.72	0.45
1:A:91:ILE:HG21	1:A:313:VAL:HG22	1.99	0.44
1:C:214:GLY:HA3	1:C:236:TYR:CE1	2.52	0.44
1:A:146:VAL:HB	1:A:354:ARG:HH22	1.81	0.44
1:B:366:LEU:C	1:C:392:MET:HE3	2.42	0.44
1:D:77:LYS:NZ	1:D:122:SER:O	2.46	0.44
1:A:368:PRO:HD2	4:A:1431:HOH:O	2.18	0.44
1:D:392:MET:HB3	1:D:394:MET:HE1	1.98	0.44
1:A:68:ARG:HA	4:A:1314:HOH:O	2.17	0.44
1:A:429:VAL:HG23	1:B:425:TYR:HD2	1.83	0.44
1:C:44:VAL:HG13	1:C:44:VAL:O	2.18	0.44
1:D:221:LYS:NZ	1:D:423:ILE:HD11	2.33	0.44
1:B:359:PRO:HG2	4:B:1384:HOH:O	2.17	0.44
1:D:79:ALA:HB2	1:D:262:ILE:HG12	2.00	0.44
1:B:44:VAL:O	1:B:44:VAL:HG23	2.18	0.44
1:C:382:ARG:HG3	1:C:382:ARG:NH1	2.29	0.44
1:D:329:VAL:HA	4:D:1418:HOH:O	2.18	0.44
1:D:27:LEU:HD21	1:D:38:LYS:HD3	1.99	0.43
1:B:53:GLN:NE2	1:C:352:GLN:HE22	2.11	0.43
1:C:385:ASN:HD22	1:C:385:ASN:C	2.25	0.43
1:A:385:ASN:HA	1:D:27:LEU:HD13	2.01	0.43
1:B:143:TRP:HB2	1:B:340:PRO:HD3	2.00	0.43
1:D:149:ASN:HA	1:D:213:ASN:O	2.18	0.43
1:A:179:PRO:HG2	4:A:1560:HOH:O	2.17	0.43
1:C:74:VAL:O	1:C:75:HIS:HB2	2.18	0.43
1:C:411:ALA:HB1	1:C:412:PRO:HD2	2.00	0.43
1:D:75:HIS:CE1	1:D:116:VAL:HG22	2.53	0.43

Continued on next page...

Continued from previous page...

Atom-1	Atom-2	Interatomic distance (Å)	Clash overlap (Å)
1:A:157:ASP:HA	1:A:158:PRO:HD3	1.83	0.43
1:B:434:THR:H	1:D:40:ASN:HD21	1.64	0.43
1:D:486:HIS:HD2	1:D:488:ASP:N	2.11	0.43
1:B:476:LYS:HA	1:B:476:LYS:HD3	1.77	0.43
1:C:102:HIS:HB2	4:C:1350:HOH:O	2.18	0.43
1:C:169:LYS:HB3	1:C:170:ARG:H	1.69	0.43
1:C:281:ILE:HG23	1:C:313:VAL:HG21	2.01	0.43
1:C:137:TYR:HA	1:C:142:ASN:HD22	1.83	0.43
1:B:405:TYR:OH	1:B:414:GLN:HG2	2.19	0.43
1:C:27:LEU:HD21	1:C:38:LYS:HD3	2.00	0.43
1:D:44:VAL:O	1:D:48:GLY:HA3	2.19	0.43
1:B:211:HIS:CB	1:B:243:LYS:HB3	2.49	0.43
1:C:79:ALA:O	1:C:112:ARG:HA	2.19	0.43
1:D:61:MET:CE	1:D:64:PHE:HD2	2.31	0.43
1:D:329:VAL:HG22	4:D:1418:HOH:O	2.18	0.43
1:A:245:LEU:HA	4:A:1482:HOH:O	2.19	0.42
1:B:486:HIS:CD2	1:B:488:ASP:HB3	2.54	0.42
1:D:113:PHE:HA	1:D:131:GLY:O	2.18	0.42
1:A:430:ARG:HB2	4:A:1594:HOH:O	2.18	0.42
1:C:421:HIS:CE1	1:C:423:ILE:HG12	2.54	0.42
1:D:458:ARG:HG2	4:D:1241:HOH:O	2.18	0.42
1:A:109:ILE:HA	1:A:135:LYS:O	2.19	0.42
1:B:327:ALA:HA	1:B:331:GLN:HE21	1.84	0.42
1:D:75:HIS:HA	1:D:115:THR:O	2.19	0.42
1:A:274:TYR:HB3	1:A:318:LEU:O	2.20	0.42
1:A:359:PRO:O	1:A:363:ARG:HG3	2.20	0.42
1:B:352:GLN:HE22	1:C:53:GLN:NE2	2.11	0.42
1:C:39:LEU:HB2	4:C:1354:HOH:O	2.20	0.42
1:D:157:ASP:HA	1:D:158:PRO:HD3	1.91	0.42
1:D:380:ARG:HB3	1:D:380:ARG:HH11	1.84	0.42
1:A:169:LYS:HB3	4:A:1390:HOH:O	2.18	0.42
1:C:98:LYS:O	1:C:101:GLU:HG2	2.19	0.42
1:B:57:PHE:CE1	1:D:158:PRO:HB2	2.55	0.42
1:B:157:ASP:HA	1:B:158:PRO:HD3	1.94	0.42
1:B:60:GLU:HB3	4:B:1220:HOH:O	2.19	0.42
1:C:82:PHE:HZ	1:C:328:GLU:HB3	1.84	0.42
1:C:44:VAL:HG21	1:D:44:VAL:HG21	2.00	0.41
1:C:311:ILE:HA	1:C:312:PRO:HD2	1.86	0.41
1:D:146:VAL:HB	1:D:354:ARG:HH22	1.84	0.41
1:D:282:GLN:HG3	1:D:310:LEU:HD23	2.01	0.41
1:D:386:TYR:CE1	1:D:405:TYR:HB2	2.55	0.41

Continued on next page...

Continued from previous page...

Atom-1	Atom-2	Interatomic distance (Å)	Clash overlap (Å)
1:B:5:ARG:HD3	1:B:10:ASP:OD1	2.21	0.41
1:B:51:LEU:N	1:B:51:LEU:HD22	2.35	0.41
1:B:457:LYS:HE2	1:B:461:GLU:OE2	2.20	0.41
1:C:292:PHE:HA	1:C:293:PRO:HD3	1.93	0.41
1:D:116:VAL:CG2	1:D:129:PRO:HG2	2.48	0.41
1:D:486:HIS:HA	1:D:487:PRO:HD3	1.90	0.41
1:B:84:TYR:N	1:B:109:ILE:HG12	2.35	0.41
1:A:253:LEU:C	1:A:255:GLN:N	2.78	0.41
1:C:44:VAL:O	1:C:48:GLY:HA3	2.20	0.41
1:D:336:PRO:HD2	4:D:1309:HOH:O	2.20	0.41
1:D:477:LYS:HA	4:D:1449:HOH:O	2.20	0.41
1:A:119:GLU:HB2	1:C:120[B]:SER:O	2.20	0.41
1:B:40:ASN:CG	1:D:433:ASN:HA	2.46	0.41
1:C:53:GLN:NE2	4:C:1521:HOH:O	2.52	0.41
1:C:368:PRO:HB2	1:C:391:PRO:HD2	2.02	0.41
1:A:385:ASN:H	1:A:398:GLN:NE2	2.01	0.41
1:B:69:ILE:HG22	1:C:391:PRO:HG3	2.03	0.41
1:B:183:TRP:CD2	1:B:467:LEU:HD13	2.56	0.41
1:B:240:GLN:OE1	1:B:275:PRO:HA	2.21	0.41
1:B:394:MET:HE2	1:C:394:MET:HG2	2.02	0.41
1:D:137:TYR:HA	1:D:142:ASN:OD1	2.21	0.41
1:D:157:ASP:HB3	1:D:160:LEU:CD1	2.48	0.41
1:A:127:ARG:HD2	1:A:199:LEU:O	2.21	0.41
1:C:5:ARG:H	1:C:5:ARG:CD	2.33	0.41
1:D:475:GLN:O	1:D:479:VAL:HG23	2.21	0.41
1:B:70:PRO:HB2	1:B:365:ARG:HB2	2.03	0.41
1:B:207:ASP:HB3	1:B:243:LYS:HG2	2.01	0.41
1:B:281:ILE:HG13	1:B:311:ILE:HB	2.02	0.41
1:B:347:PRO:HG3	4:B:1424:HOH:O	2.20	0.41
1:B:389:ASP:H	1:B:397:ASN:ND2	2.19	0.41
1:D:178:ASP:HA	1:D:179:PRO:HD2	1.89	0.41
1:B:339:MET:HE1	1:B:345:ALA:HB2	2.03	0.40
1:C:156:ARG:HD2	1:C:434:THR:O	2.21	0.40
1:A:403:ASN:N	1:A:403:ASN:HD22	2.19	0.40
1:B:238:THR:HA	1:B:277:TRP:CD1	2.56	0.40
1:B:364:HIS:CD2	1:D:66:ARG:HA	2.56	0.40
1:C:382:ARG:NH1	1:C:382:ARG:CG	2.83	0.40
1:A:348:ASP:HA	4:A:1473:HOH:O	2.21	0.40
1:D:53:GLN:NE2	4:D:1393:HOH:O	2.55	0.40
1:A:167:SER:HA	1:A:181:MET:HE2	2.02	0.40
1:A:276:SER:HA	1:A:316:LEU:O	2.21	0.40

Continued on next page...

Continued from previous page...

Atom-1	Atom-2	Interatomic distance (Å)	Clash overlap (Å)
1:C:162:PRO:HD2	4:C:1416:HOH:O	2.22	0.40
1:D:233:LYS:HD2	4:D:1272:HOH:O	2.22	0.40
1:A:422:SER:HA	4:A:1334:HOH:O	2.21	0.40
1:B:295:ASN:HB3	1:B:298:ASP:HB2	2.03	0.40
1:C:233:LYS:HD2	4:C:1432:HOH:O	2.20	0.40
1:C:440:VAL:O	1:C:441:THR:C	2.64	0.40

There are no symmetry-related clashes.

5.3 Torsion angles [i](#)

5.3.1 Protein backbone [i](#)

In the following table, the Percentiles column shows the percent Ramachandran outliers of the chain as a percentile score with respect to all X-ray entries followed by that with respect to entries of similar resolution.

The Analysed column shows the number of residues for which the backbone conformation was analysed, and the total number of residues.

Mol	Chain	Analysed	Favoured	Allowed	Outliers	Percentiles	
1	A	498/498 (100%)	463 (93%)	35 (7%)	0	100	100
1	B	498/498 (100%)	468 (94%)	30 (6%)	0	100	100
1	C	498/498 (100%)	466 (94%)	30 (6%)	2 (0%)	30	34
1	D	497/498 (100%)	467 (94%)	27 (5%)	3 (1%)	21	23
All	All	1991/1992 (100%)	1864 (94%)	122 (6%)	5 (0%)	36	42

All (5) Ramachandran outliers are listed below:

Mol	Chain	Res	Type
1	D	396	ASP
1	C	20	ALA
1	D	20	ALA
1	C	441	THR
1	D	374	PRO

5.3.2 Protein sidechains [i](#)

In the following table, the Percentiles column shows the percent sidechain outliers of the chain as a percentile score with respect to all X-ray entries followed by that with respect to entries of similar resolution.

The Analysed column shows the number of residues for which the sidechain conformation was analysed, and the total number of residues.

Mol	Chain	Analysed	Rotameric	Outliers	Percentiles	
1	A	430/429 (100%)	419 (97%)	11 (3%)	40	55
1	B	430/429 (100%)	422 (98%)	8 (2%)	50	66
1	C	430/429 (100%)	416 (97%)	14 (3%)	33	45
1	D	429/429 (100%)	415 (97%)	14 (3%)	33	45
All	All	1719/1716 (100%)	1672 (97%)	47 (3%)	39	53

All (47) residues with a non-rotameric sidechain are listed below:

Mol	Chain	Res	Type
1	A	5	ARG
1	A	44	VAL
1	A	77	LYS
1	A	139	GLU
1	A	150	THR
1	A	236	TYR
1	A	355	LEU
1	A	385	ASN
1	A	394	MET
1	A	403	ASN
1	A	424	GLN
1	B	4	SER
1	B	5	ARG
1	B	99	VAL
1	B	150	THR
1	B	236	TYR
1	B	397	ASN
1	B	403	ASN
1	B	430	ARG
1	C	5	ARG
1	C	41	VAL
1	C	67	GLU
1	C	93	LYS
1	C	138	THR

Continued on next page...

Continued from previous page...

Mol	Chain	Res	Type
1	C	150	THR
1	C	191	GLU
1	C	236	TYR
1	C	238	THR
1	C	385	ASN
1	C	403	ASN
1	C	437	ASP
1	C	454	GLU
1	C	476	LYS
1	D	44	VAL
1	D	77	LYS
1	D	93	LYS
1	D	99	VAL
1	D	236	TYR
1	D	355	LEU
1	D	374	PRO
1	D	380	ARG
1	D	385	ASN
1	D	394	MET
1	D	397	ASN
1	D	403	ASN
1	D	461	GLU
1	D	468	LYS

Sometimes sidechains can be flipped to improve hydrogen bonding and reduce clashes. All (66) such sidechains are listed below:

Mol	Chain	Res	Type
1	A	13	GLN
1	A	53	GLN
1	A	63	HIS
1	A	102	HIS
1	A	168	GLN
1	A	226	ASN
1	A	338	ASN
1	A	369	ASN
1	A	385	ASN
1	A	395	GLN
1	A	397	ASN
1	A	398	GLN
1	A	403	ASN
1	A	415	GLN
1	A	424	GLN

Continued on next page...

Continued from previous page...

Mol	Chain	Res	Type
1	A	486	HIS
1	B	13	GLN
1	B	33	ASN
1	B	40	ASN
1	B	53	GLN
1	B	63	HIS
1	B	211	HIS
1	B	226	ASN
1	B	287	ASN
1	B	338	ASN
1	B	369	ASN
1	B	397	ASN
1	B	403	ASN
1	B	421	HIS
1	B	455	GLN
1	B	475	GLN
1	B	486	HIS
1	B	501	ASN
1	C	40	ASN
1	C	53	GLN
1	C	142	ASN
1	C	168	GLN
1	C	226	ASN
1	C	338	ASN
1	C	369	ASN
1	C	385	ASN
1	C	397	ASN
1	C	403	ASN
1	C	415	GLN
1	C	475	GLN
1	C	486	HIS
1	C	501	ASN
1	D	14	HIS
1	D	40	ASN
1	D	53	GLN
1	D	89	HIS
1	D	168	GLN
1	D	211	HIS
1	D	255	GLN
1	D	305	HIS
1	D	338	ASN
1	D	369	ASN

Continued on next page...

Continued from previous page...

Mol	Chain	Res	Type
1	D	385	ASN
1	D	397	ASN
1	D	398	GLN
1	D	403	ASN
1	D	415	GLN
1	D	475	GLN
1	D	486	HIS
1	D	492	HIS
1	D	501	ASN

5.3.3 RNA [i](#)

There are no RNA molecules in this entry.

5.4 Non-standard residues in protein, DNA, RNA chains [i](#)

There are no non-standard protein/DNA/RNA residues in this entry.

5.5 Carbohydrates [i](#)

There are no oligosaccharides in this entry.

5.6 Ligand geometry [i](#)

6 ligands are modelled in this entry.

In the following table, the Counts columns list the number of bonds (or angles) for which Mogul statistics could be retrieved, the number of bonds (or angles) that are observed in the model and the number of bonds (or angles) that are defined in the Chemical Component Dictionary. The Link column lists molecule types, if any, to which the group is linked. The Z score for a bond length (or angle) is the number of standard deviations the observed value is removed from the expected value. A bond length (or angle) with $|Z| > 2$ is considered an outlier worth inspection. RMSZ is the root-mean-square of all Z scores of the bond lengths (or angles).

Mol	Type	Chain	Res	Link	Bond lengths			Bond angles		
					Counts	RMSZ	$\# Z > 2$	Counts	RMSZ	$\# Z > 2$
3	NDP	A	1300	-	51,52,52	1.32	6 (11%)	71,80,80	1.53	10 (14%)
2	HEM	C	1202	1	50,50,50	1.76	11 (22%)	67,82,82	1.26	6 (8%)
2	HEM	A	1200	1	50,50,50	1.60	11 (22%)	67,82,82	1.29	10 (14%)
2	HEM	D	1203	1	50,50,50	1.56	9 (18%)	67,82,82	1.51	9 (13%)

Mol	Type	Chain	Res	Link	Bond lengths			Bond angles		
					Counts	RMSZ	# Z > 2	Counts	RMSZ	# Z > 2
2	HEM	B	1201	1	50,50,50	1.56	8 (16%)	67,82,82	1.35	11 (16%)
3	NDP	C	1301	-	51,52,52	1.33	5 (9%)	71,80,80	1.58	7 (9%)

In the following table, the Chirals column lists the number of chiral outliers, the number of chiral centers analysed, the number of these observed in the model and the number defined in the Chemical Component Dictionary. Similar counts are reported in the Torsion and Rings columns. '-' means no outliers of that kind were identified.

Mol	Type	Chain	Res	Link	Chirals	Torsions	Rings
3	NDP	A	1300	-	-	3/34/77/77	0/5/5/5
2	HEM	C	1202	1	-	4/14/54/54	-
2	HEM	A	1200	1	-	6/14/54/54	-
2	HEM	D	1203	1	-	4/14/54/54	-
2	HEM	B	1201	1	-	4/14/54/54	-
3	NDP	C	1301	-	-	1/34/77/77	0/5/5/5

All (50) bond length outliers are listed below:

Mol	Chain	Res	Type	Atoms	Z	Observed(Å)	Ideal(Å)
2	C	1202	HEM	FE-NA	-5.05	1.78	1.95
2	C	1202	HEM	FE-ND	-4.99	1.79	1.94
3	C	1301	NDP	C4N-C3N	-4.79	1.40	1.50
2	D	1203	HEM	FE-ND	-4.61	1.80	1.94
3	A	1300	NDP	C4N-C3N	-4.48	1.41	1.50
2	B	1201	HEM	FE-NB	-3.96	1.82	1.94
2	A	1200	HEM	CHA-C1A	-3.45	1.31	1.39
3	C	1301	NDP	C5A-N7A	-3.40	1.32	1.39
2	B	1201	HEM	CHB-C1B	-3.28	1.31	1.38
3	A	1300	NDP	C5A-N7A	-3.27	1.33	1.39
2	A	1200	HEM	FE-ND	-3.16	1.85	1.94
3	C	1301	NDP	C4N-C5N	-3.05	1.41	1.49
3	A	1300	NDP	C4N-C5N	-3.04	1.41	1.49
2	D	1203	HEM	CHD-C4C	-3.00	1.32	1.38
2	B	1201	HEM	CHB-C4A	-2.97	1.32	1.39
2	D	1203	HEM	C2A-C3A	-2.91	1.31	1.38
3	A	1300	NDP	C7N-C3N	2.87	1.54	1.48
2	A	1200	HEM	CHA-C4D	-2.81	1.32	1.38
2	A	1200	HEM	C3D-C2D	-2.77	1.30	1.36
3	C	1301	NDP	C7N-C3N	2.69	1.54	1.48
2	B	1201	HEM	C2A-C3A	-2.67	1.31	1.38
2	C	1202	HEM	CHC-C1C	-2.67	1.33	1.38

Continued on next page...

Continued from previous page...

Mol	Chain	Res	Type	Atoms	Z	Observed(Å)	Ideal(Å)
2	D	1203	HEM	CHD-C1D	-2.64	1.33	1.39
2	D	1203	HEM	FE-NA	-2.58	1.86	1.95
2	D	1203	HEM	CHC-C4B	-2.56	1.33	1.39
2	A	1200	HEM	FE-NA	-2.55	1.86	1.95
2	C	1202	HEM	C2A-C3A	-2.54	1.32	1.38
2	A	1200	HEM	CHD-C4C	-2.51	1.33	1.38
2	B	1201	HEM	C3C-C2C	-2.46	1.32	1.37
2	B	1201	HEM	CHC-C1C	-2.45	1.33	1.38
2	C	1202	HEM	CHA-C4D	-2.41	1.33	1.38
3	C	1301	NDP	C6N-C5N	2.40	1.40	1.33
3	A	1300	NDP	C4A-N9A	-2.38	1.32	1.37
2	D	1203	HEM	CHC-C1C	-2.35	1.33	1.38
2	A	1200	HEM	CHD-C1D	-2.32	1.33	1.39
2	A	1200	HEM	C2A-C3A	-2.31	1.32	1.38
2	D	1203	HEM	C4C-NC	-2.31	1.35	1.39
2	B	1201	HEM	C4A-NA	-2.22	1.35	1.39
3	A	1300	NDP	C6N-C5N	2.20	1.39	1.33
2	A	1200	HEM	CHB-C4A	-2.16	1.34	1.39
2	C	1202	HEM	C4D-ND	-2.16	1.36	1.40
2	A	1200	HEM	CHB-C1B	-2.15	1.34	1.38
2	C	1202	HEM	C1C-C2C	-2.14	1.41	1.45
2	B	1201	HEM	C4C-NC	-2.12	1.35	1.39
2	A	1200	HEM	FE-NB	-2.09	1.88	1.94
2	C	1202	HEM	CHB-C4A	-2.05	1.34	1.39
2	C	1202	HEM	CHB-C1B	-2.04	1.34	1.38
2	D	1203	HEM	CHA-C1A	-2.03	1.34	1.39
2	C	1202	HEM	CHC-C4B	-2.03	1.34	1.39
2	C	1202	HEM	CHD-C1D	-2.02	1.34	1.39

All (53) bond angle outliers are listed below:

Mol	Chain	Res	Type	Atoms	Z	Observed(°)	Ideal(°)
3	C	1301	NDP	C5A-C4A-N3A	-6.27	118.09	126.72
3	C	1301	NDP	N3A-C4A-N9A	5.71	136.87	127.17
3	A	1300	NDP	C5A-C4A-N3A	-5.58	119.03	126.72
2	D	1203	HEM	C3B-C4B-NB	4.75	112.88	109.47
3	A	1300	NDP	N3A-C4A-N9A	4.34	134.55	127.17
3	C	1301	NDP	C6A-C5A-C4A	3.91	122.52	117.18
3	C	1301	NDP	C6A-C5A-N7A	-3.78	124.81	132.09
3	A	1300	NDP	N3A-C2A-N1A	-3.71	122.97	128.58
3	C	1301	NDP	N3A-C2A-N1A	-3.61	123.12	128.58
3	A	1300	NDP	C6A-C5A-N7A	-3.58	125.19	132.09

Continued on next page...

Continued from previous page...

Mol	Chain	Res	Type	Atoms	Z	Observed(°)	Ideal(°)
2	B	1201	HEM	C3B-C4B-NB	3.43	111.93	109.47
2	B	1201	HEM	C2B-C1B-NB	3.23	113.55	109.84
2	D	1203	HEM	C3D-C4D-ND	3.12	113.59	110.17
3	A	1300	NDP	C6A-C5A-C4A	3.08	121.38	117.18
3	C	1301	NDP	C2A-N3A-C4A	3.06	119.31	111.83
2	D	1203	HEM	C3B-C2B-C1B	2.96	108.63	106.41
3	A	1300	NDP	C2A-N3A-C4A	2.92	118.96	111.83
2	D	1203	HEM	C4A-C3A-C2A	2.81	110.03	106.82
2	C	1202	HEM	CMD-C2D-C1D	-2.80	120.66	125.03
2	C	1202	HEM	C3D-C4D-ND	2.79	113.23	110.17
2	C	1202	HEM	C3B-C4B-NB	2.79	111.47	109.47
2	D	1203	HEM	C4B-C3B-C2B	-2.77	104.73	107.28
2	A	1200	HEM	C3D-C4D-ND	2.68	113.11	110.17
2	B	1201	HEM	C3D-C4D-ND	2.63	113.05	110.17
2	A	1200	HEM	CAD-C3D-C4D	2.57	129.18	124.70
2	A	1200	HEM	C1D-C2D-C3D	2.52	109.63	106.98
2	B	1201	HEM	C1D-C2D-C3D	2.47	109.57	106.98
2	D	1203	HEM	C1C-CHC-C4B	-2.45	120.81	126.02
2	A	1200	HEM	CHA-C4D-C3D	-2.45	120.71	125.23
2	B	1201	HEM	CHA-C4D-C3D	-2.34	120.91	125.23
3	C	1301	NDP	O3X-P2B-O2X	2.32	116.50	107.80
2	C	1202	HEM	C3B-C2B-C1B	2.29	108.13	106.41
3	A	1300	NDP	C4A-N9A-C8A	2.29	108.14	105.74
2	B	1201	HEM	C3C-C2C-C1C	-2.28	104.89	107.05
2	C	1202	HEM	C4D-C3D-C2D	-2.28	103.58	106.89
2	D	1203	HEM	C2A-C1A-NA	2.27	112.67	110.15
2	A	1200	HEM	C3B-C4B-NB	2.26	111.09	109.47
2	B	1201	HEM	C3B-C2B-C1B	-2.26	104.71	106.41
2	A	1200	HEM	CMA-C3A-C4A	-2.24	122.01	125.42
2	A	1200	HEM	CMA-C3A-C2A	2.23	130.36	125.62
2	B	1201	HEM	C1B-NB-C4B	-2.21	102.59	105.21
2	D	1203	HEM	C4D-ND-C1D	-2.21	102.59	105.21
2	A	1200	HEM	C4D-ND-C1D	-2.20	102.60	105.21
2	A	1200	HEM	C2A-C1A-NA	2.20	112.59	110.15
3	A	1300	NDP	O3X-P2B-O2X	2.19	116.03	107.80
2	A	1200	HEM	C4D-C3D-C2D	-2.16	103.75	106.89
2	B	1201	HEM	C2A-C1A-NA	2.15	112.53	110.15
3	A	1300	NDP	N9A-C8A-N7A	-2.06	111.02	113.94
2	D	1203	HEM	C4D-C3D-C2D	-2.05	103.91	106.89
3	A	1300	NDP	C3N-C2N-N1N	-2.03	120.22	123.20
2	C	1202	HEM	C1C-CHC-C4B	-2.03	121.71	126.02
2	B	1201	HEM	C4D-C3D-C2D	-2.02	103.95	106.89

Continued on next page...

Continued from previous page...

Mol	Chain	Res	Type	Atoms	Z	Observed(°)	Ideal(°)
2	B	1201	HEM	C4A-NA-C1A	-2.00	102.56	105.82

There are no chirality outliers.

All (22) torsion outliers are listed below:

Mol	Chain	Res	Type	Atoms
3	A	1300	NDP	O4D-C1D-N1N-C6N
3	C	1301	NDP	O4D-C1D-N1N-C6N
3	A	1300	NDP	C2B-C1B-N9A-C8A
2	A	1200	HEM	C2B-C3B-CAB-CBB
2	B	1201	HEM	CAD-CBD-CGD-O2D
2	B	1201	HEM	CAD-CBD-CGD-O1D
2	C	1202	HEM	CAD-CBD-CGD-O2D
2	A	1200	HEM	CAD-CBD-CGD-O2D
2	C	1202	HEM	CAD-CBD-CGD-O1D
2	A	1200	HEM	CAD-CBD-CGD-O1D
2	D	1203	HEM	CAD-CBD-CGD-O2D
2	D	1203	HEM	CAD-CBD-CGD-O1D
2	A	1200	HEM	C4B-C3B-CAB-CBB
2	A	1200	HEM	CAA-CBA-CGA-O1A
2	B	1201	HEM	CAA-CBA-CGA-O2A
2	D	1203	HEM	CAA-CBA-CGA-O2A
2	B	1201	HEM	CAA-CBA-CGA-O1A
2	D	1203	HEM	CAA-CBA-CGA-O1A
2	A	1200	HEM	CAA-CBA-CGA-O2A
3	A	1300	NDP	O4B-C1B-N9A-C8A
2	C	1202	HEM	CAA-CBA-CGA-O1A
2	C	1202	HEM	C2B-C3B-CAB-CBB

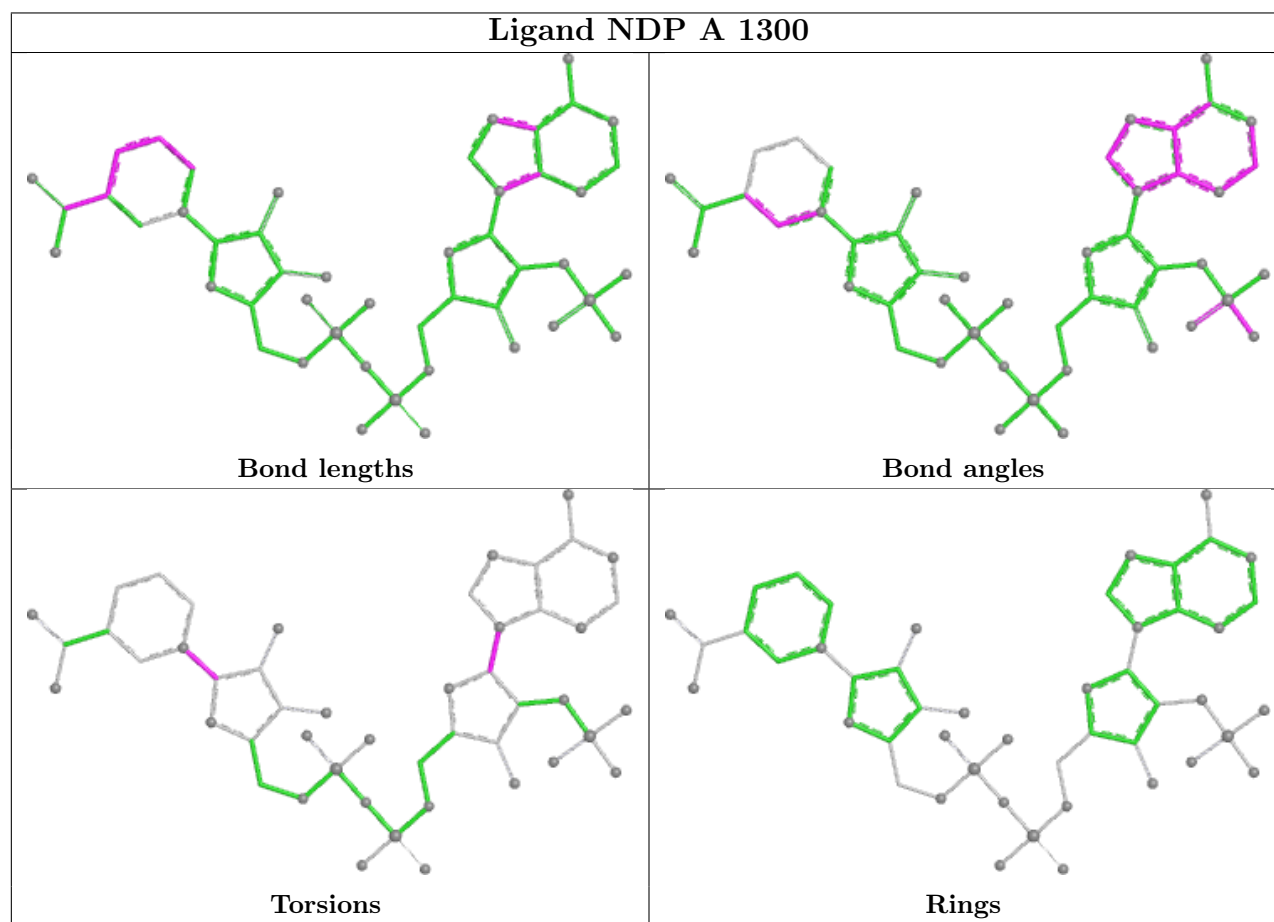
There are no ring outliers.

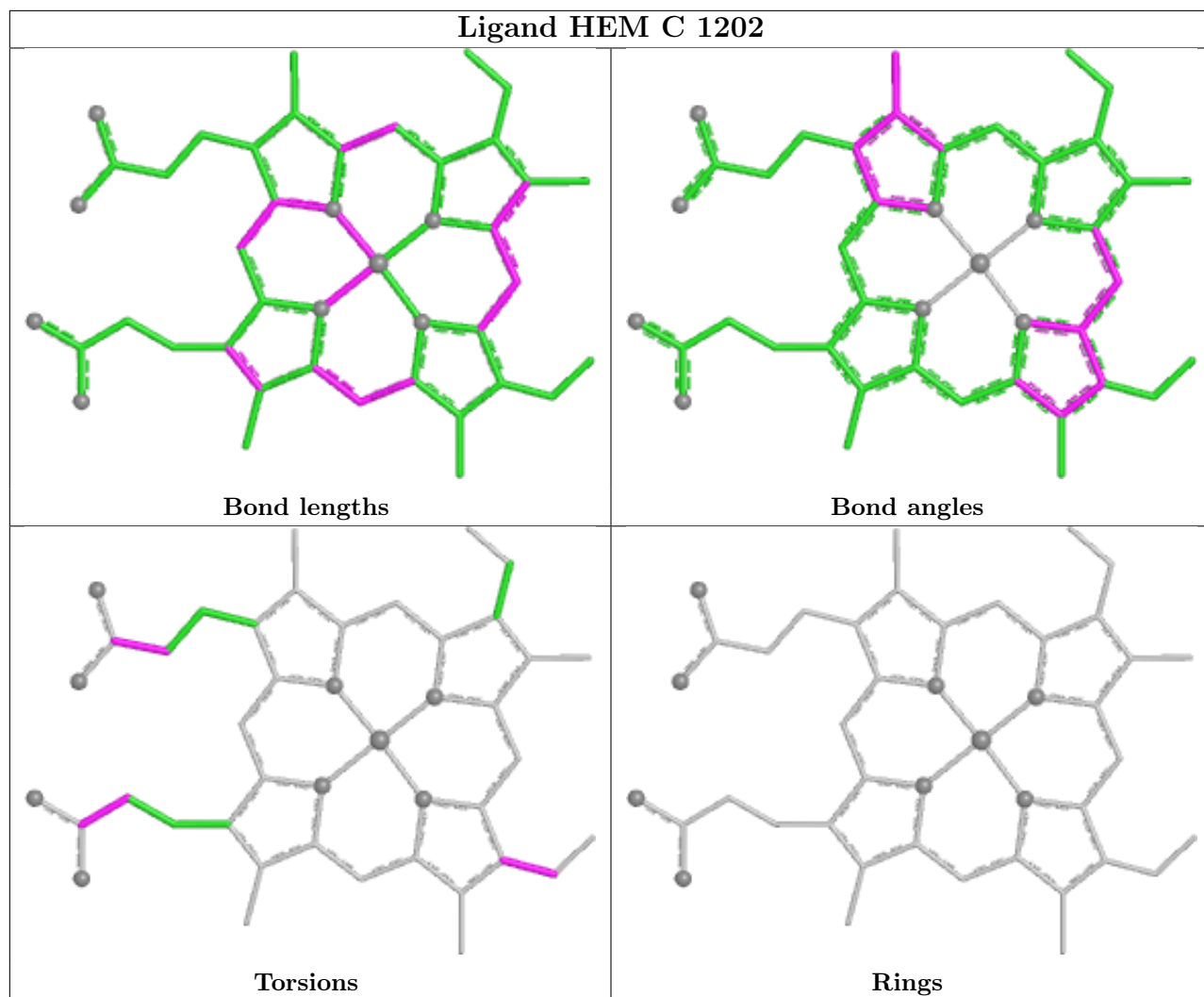
2 monomers are involved in 2 short contacts:

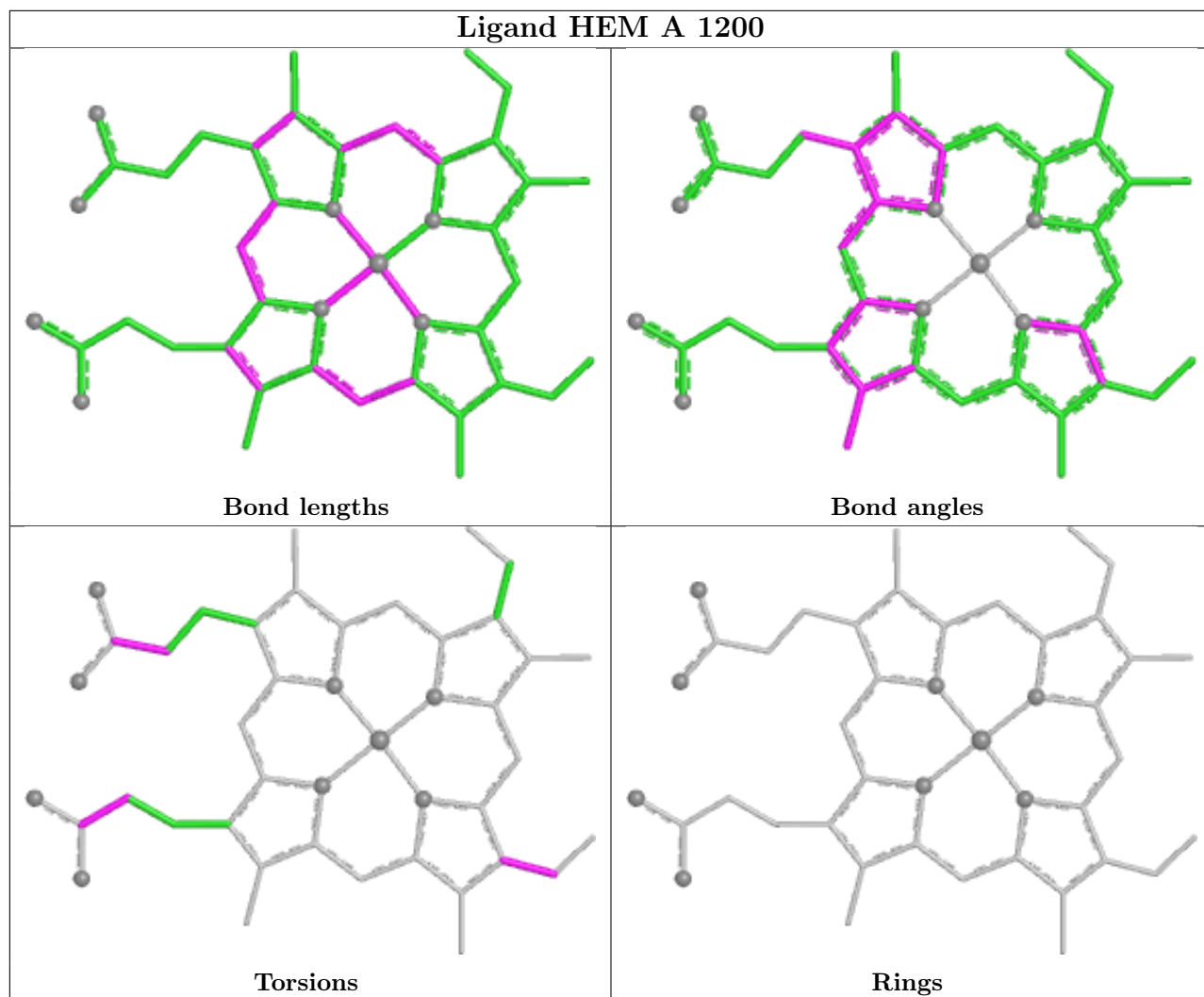
Mol	Chain	Res	Type	Clashes	Symm-Clashes
2	A	1200	HEM	1	0
2	D	1203	HEM	1	0

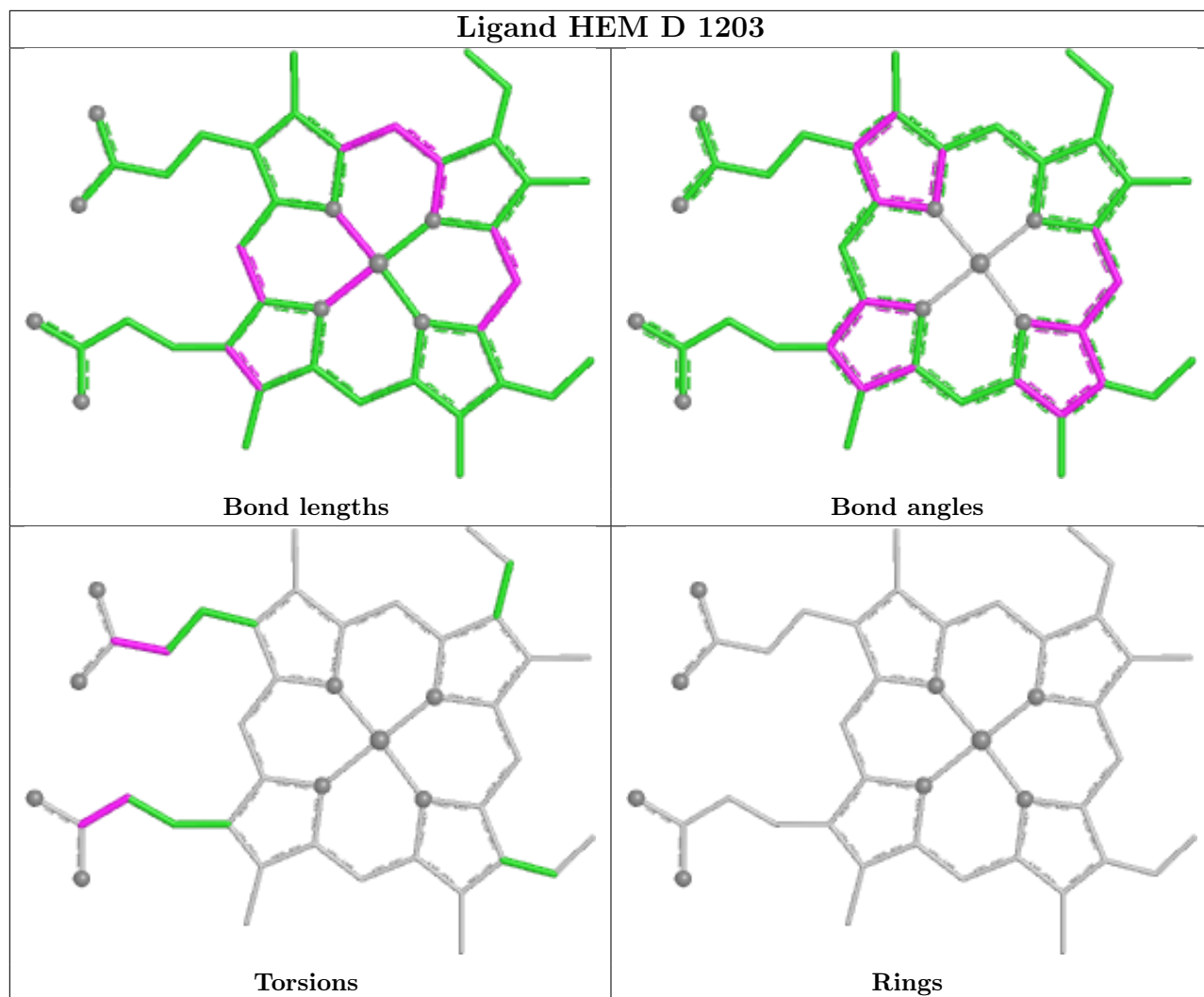
The following is a two-dimensional graphical depiction of Mogul quality analysis of bond lengths, bond angles, torsion angles, and ring geometry for all instances of the Ligand of Interest. In addition, ligands with molecular weight > 250 and outliers as shown on the validation Tables will also be included. For torsion angles, if less than 5% of the Mogul distribution of torsion angles is within 10 degrees of the torsion angle in question, then that torsion angle is considered an outlier. Any bond that is central to one or more torsion angles identified as an outlier by Mogul will be

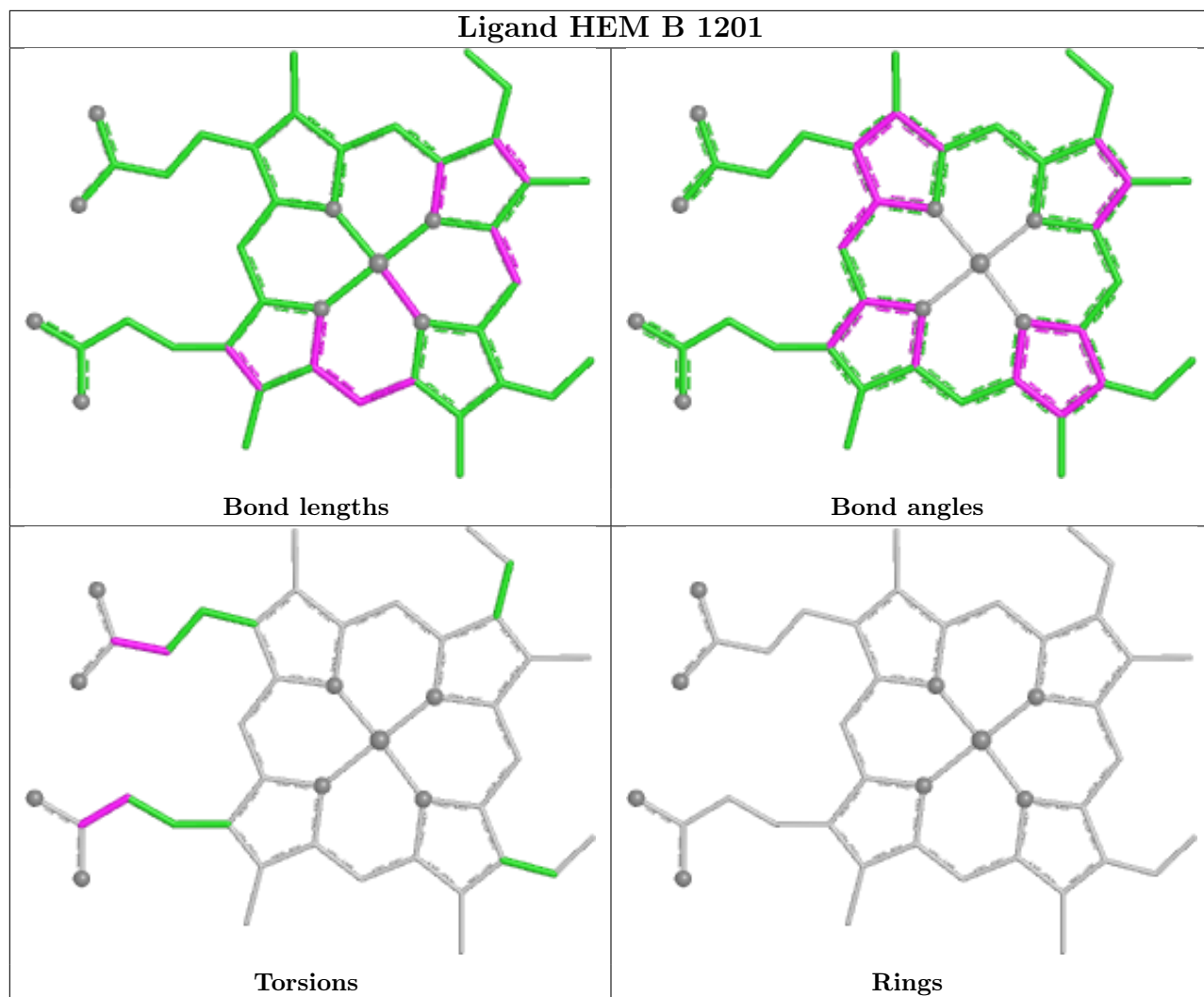
highlighted in the graph. For rings, the root-mean-square deviation (RMSD) between the ring in question and similar rings identified by Mogul is calculated over all ring torsion angles. If the average RMSD is greater than 60 degrees and the minimal RMSD between the ring in question and any Mogul-identified rings is also greater than 60 degrees, then that ring is considered an outlier. The outliers are highlighted in purple. The color gray indicates Mogul did not find sufficient equivalents in the CSD to analyse the geometry.

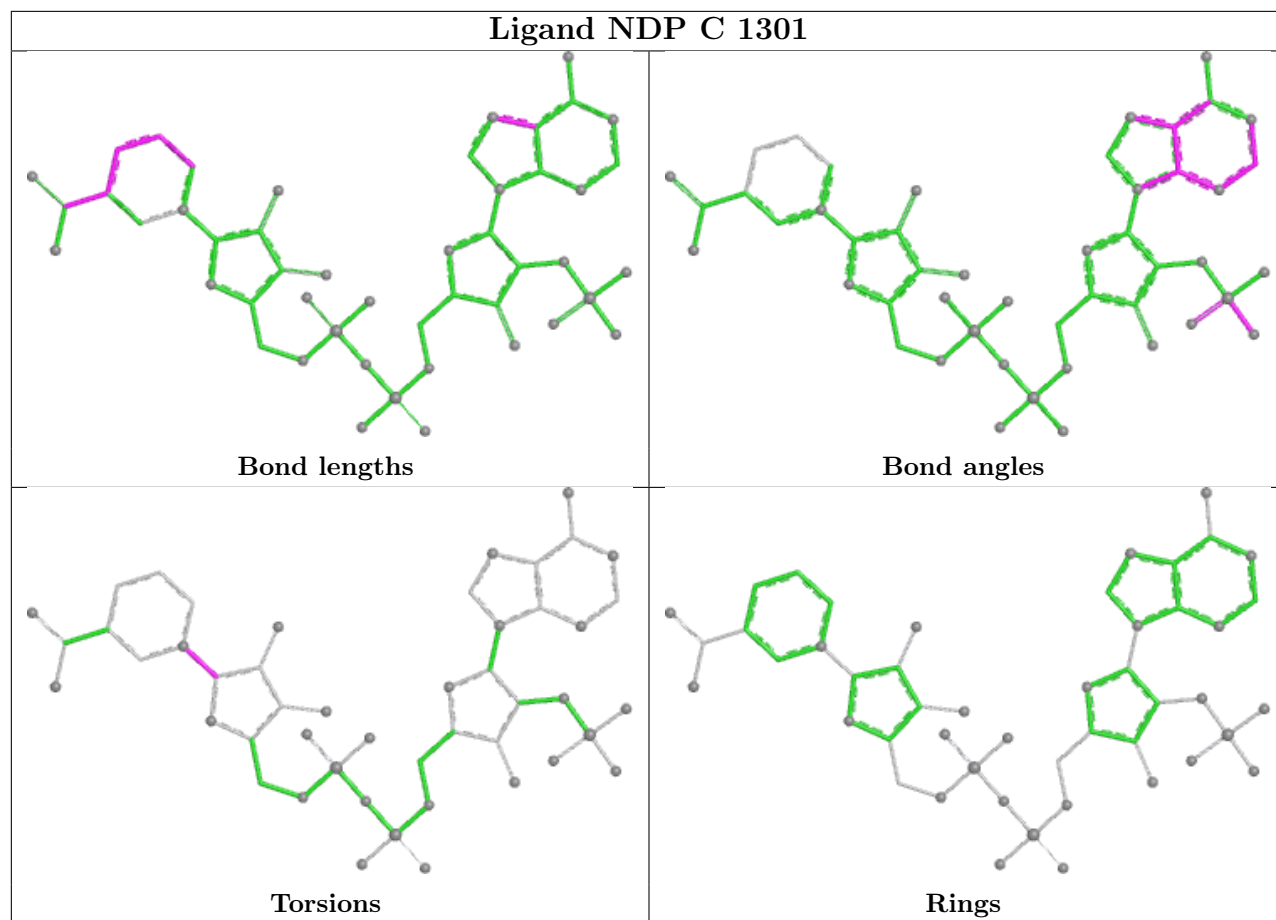












5.7 Other polymers [\(i\)](#)

There are no such residues in this entry.

5.8 Polymer linkage issues [\(i\)](#)

There are no chain breaks in this entry.

6 Fit of model and data [i](#)

6.1 Protein, DNA and RNA chains [i](#)

In the following table, the column labelled '#RSRZ > 2' contains the number (and percentage) of RSRZ outliers, followed by percent RSRZ outliers for the chain as percentile scores relative to all X-ray entries and entries of similar resolution. The OWAB column contains the minimum, median, 95th percentile and maximum values of the occupancy-weighted average B-factor per residue. The column labelled 'Q < 0.9' lists the number of (and percentage) of residues with an average occupancy less than 0.9.

Mol	Chain	Analysed	<RSRZ>	#RSRZ>2	OWAB(Å ²)	Q<0.9
1	A	498/498 (100%)	-0.57	0 100 100	29, 62, 71, 83	2 (0%)
1	B	498/498 (100%)	-0.57	1 (0%) 91 90	30, 62, 72, 82	2 (0%)
1	C	498/498 (100%)	-0.56	0 100 100	30, 62, 74, 86	2 (0%)
1	D	497/498 (99%)	-0.57	0 100 100	29, 61, 73, 85	2 (0%)
All	All	1991/1992 (99%)	-0.57	1 (0%) 92 90	29, 62, 73, 86	8 (0%)

All (1) RSRZ outliers are listed below:

Mol	Chain	Res	Type	RSRZ
1	B	394	MET	3.1

6.2 Non-standard residues in protein, DNA, RNA chains [i](#)

There are no non-standard protein/DNA/RNA residues in this entry.

6.3 Carbohydrates [i](#)

There are no oligosaccharides in this entry.

6.4 Ligands [i](#)

In the following table, the Atoms column lists the number of modelled atoms in the group and the number defined in the chemical component dictionary. The B-factors column lists the minimum, median, 95th percentile and maximum values of B factors of atoms in the group. The column labelled 'Q < 0.9' lists the number of atoms with occupancy less than 0.9.

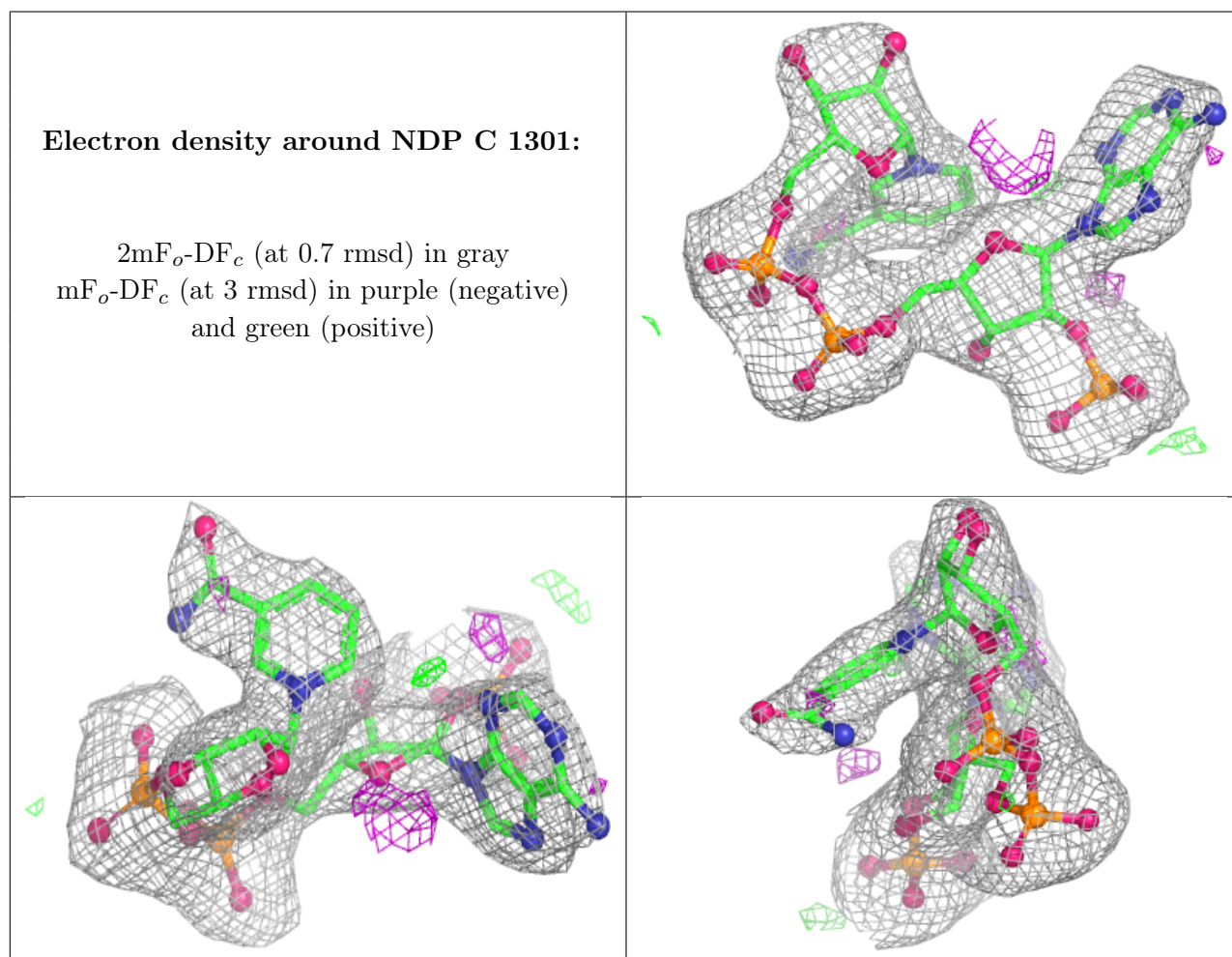
Mol	Type	Chain	Res	Atoms	RSCC	RSR	B-factors(Å ²)	Q<0.9
3	NDP	C	1301	48/48	0.95	0.07	73,79,83,83	0

Continued on next page...

Continued from previous page...

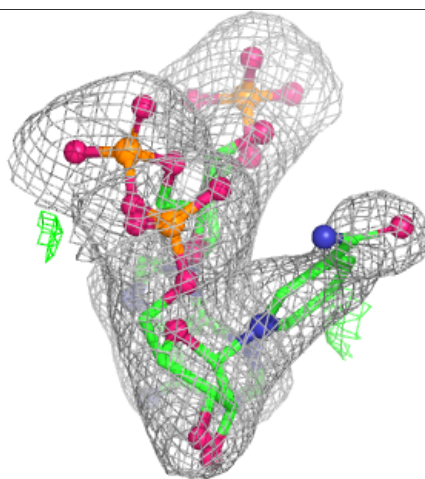
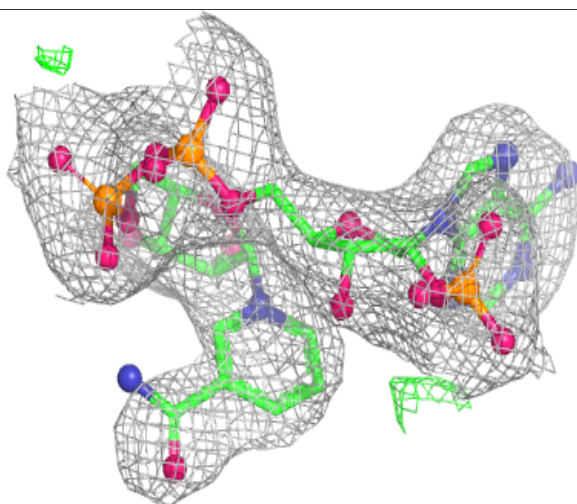
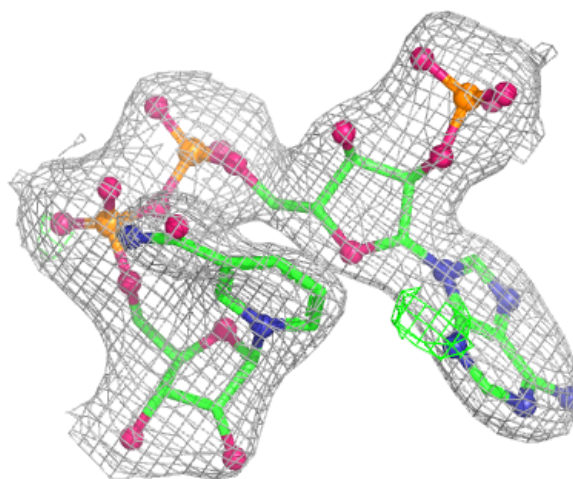
Mol	Type	Chain	Res	Atoms	RSCC	RSR	B-factors(\AA^2)	Q<0.9
3	NDP	A	1300	48/48	0.96	0.06	67,71,74,74	0
2	HEM	C	1202	43/43	0.98	0.06	58,60,61,61	0
2	HEM	D	1203	43/43	0.98	0.06	54,56,56,57	0
2	HEM	A	1200	43/43	0.98	0.05	56,57,58,58	0
2	HEM	B	1201	43/43	0.98	0.06	56,57,58,59	0

The following is a graphical depiction of the model fit to experimental electron density of all instances of the Ligand of Interest. In addition, ligands with molecular weight > 250 and outliers as shown on the geometry validation Tables will also be included. Each fit is shown from different orientation to approximate a three-dimensional view.



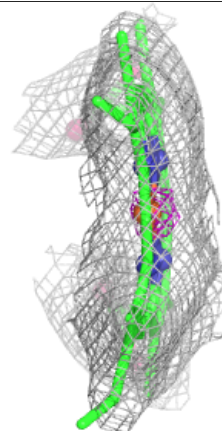
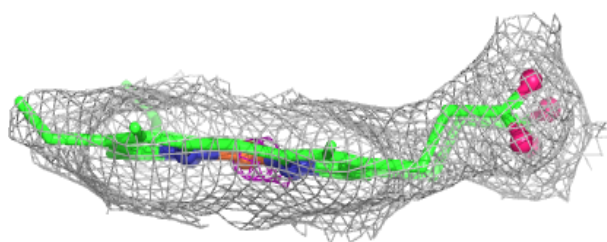
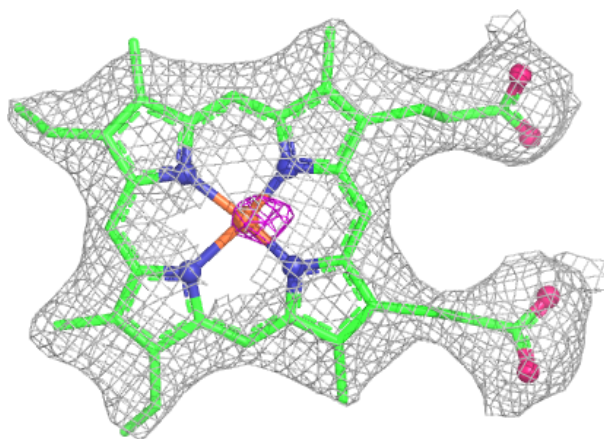
Electron density around NDP A 1300:

$2mF_o-DF_c$ (at 0.7 rmsd) in gray
 mF_o-DF_c (at 3 rmsd) in purple (negative)
and green (positive)

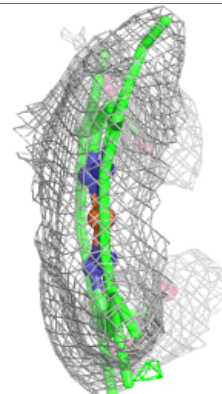
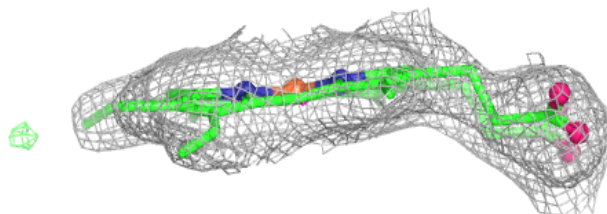
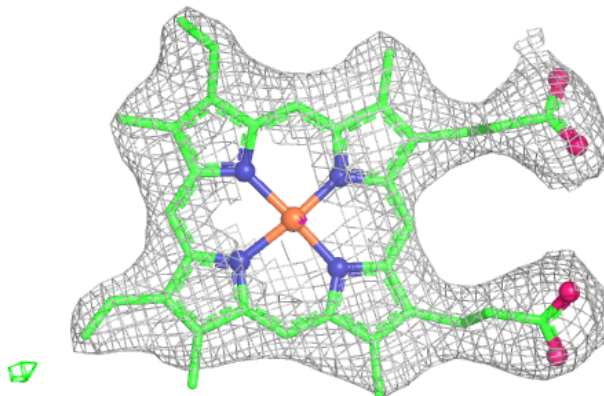


Electron density around HEM C 1202:

$2mF_o-DF_c$ (at 0.7 rmsd) in gray
 mF_o-DF_c (at 3 rmsd) in purple (negative)
and green (positive)

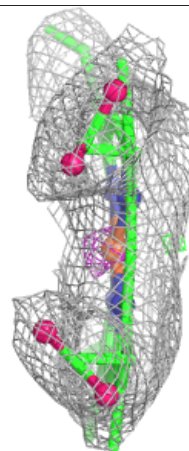
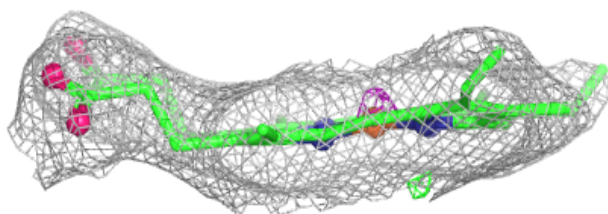
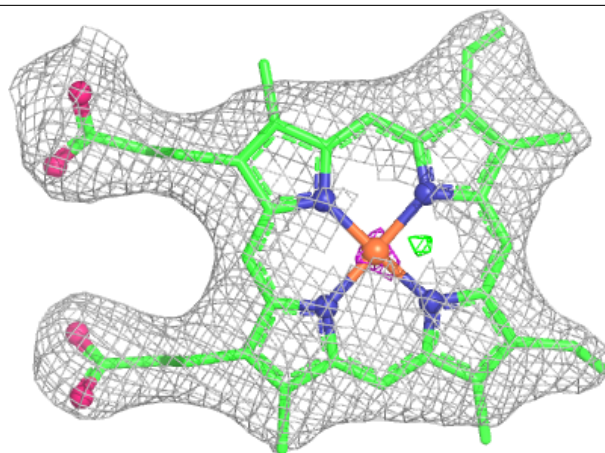
**Electron density around HEM D 1203:**

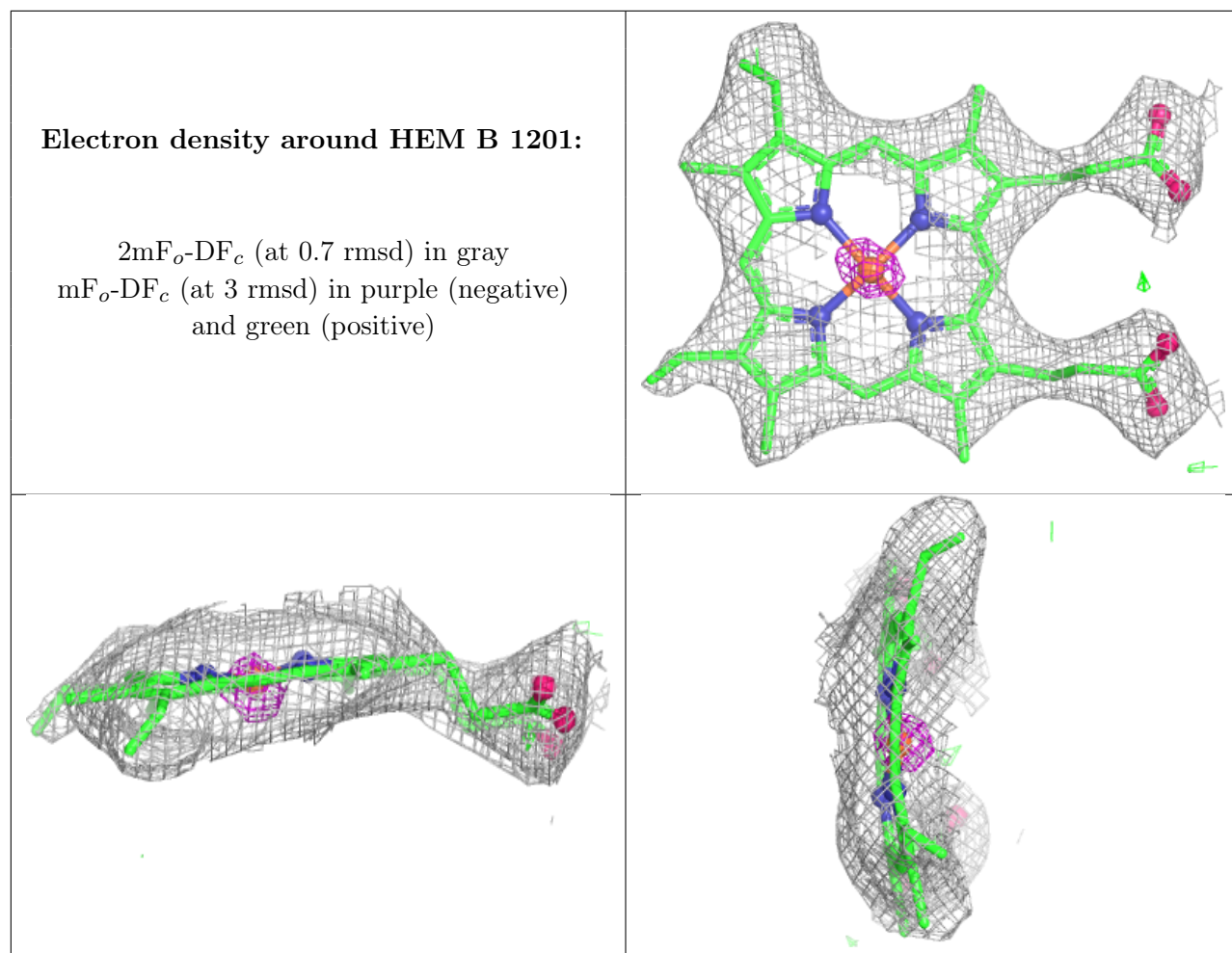
$2mF_o-DF_c$ (at 0.7 rmsd) in gray
 mF_o-DF_c (at 3 rmsd) in purple (negative)
and green (positive)



Electron density around HEM A 1200:

$2mF_o-DF_c$ (at 0.7 rmsd) in gray
 mF_o-DF_c (at 3 rmsd) in purple (negative)
and green (positive)





6.5 Other polymers [i](#)

There are no such residues in this entry.