



Full wwPDB X-ray Structure Validation Report ⓘ

Mar 6, 2026 – 11:46 PM UTC

PDB ID : 1IAY / pdb_00001iay
Title : CRYSTAL STRUCTURE OF ACC SYNTHASE COMPLEXED WITH CO-FACTOR PLP AND INHIBITOR AVG
Authors : Huai, Q.; Xia, Y.; Chen, Y.; Callahan, B.; Li, N.; Ke, H.
Deposited on : 2001-03-24
Resolution : 2.70 Å (reported)

This is a Full wwPDB X-ray Structure Validation Report for a publicly released PDB entry.

We welcome your comments at validation@mail.wwpdb.org

A user guide is available at

<https://www.wwpdb.org/validation/2017/XrayValidationReportHelp>

with specific help available everywhere you see the ⓘ symbol.

The types of validation reports are described at

<http://www.wwpdb.org/validation/2017/FAQs#types>.

The following versions of software and data (see [references ⓘ](#)) were used in the production of this report:

MolProbity : 4-5-2 with Phenix2.0
Mogul : 2022.3.0, CSD as543be (2022)
Xtriage (Phenix) : 2.0
EDS : 3.0
Percentile statistics : 20250101.v01 (using entries in the PDB archive January 1st 2025)
CCP4 : 9.0.010 (Gargrove)
Density-Fitness : 1.0.12
Ideal geometry (proteins) : Engh & Huber (2001)
Ideal geometry (DNA, RNA) : Parkinson et al. (1996)
Validation Pipeline (wwPDB-VP) : 2.49

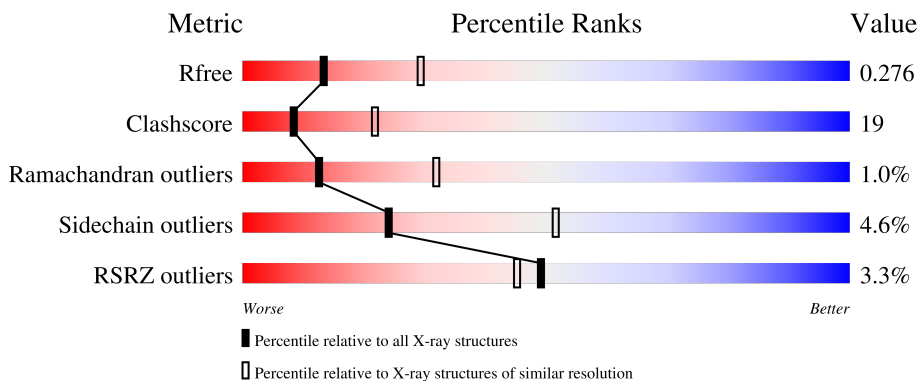
1 Overall quality at a glance

The following experimental techniques were used to determine the structure:

X-RAY DIFFRACTION

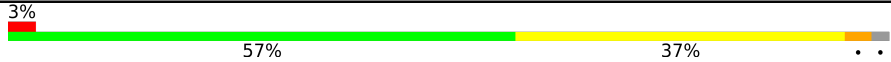
The reported resolution of this entry is 2.70 Å.

Percentile scores (ranging between 0-100) for global validation metrics of the entry are shown in the following graphic. The table shows the number of entries on which the scores are based.



Metric	Whole archive (#Entries)	Similar resolution (#Entries, resolution range(Å))
R_{free}	180053	3538 (2.70-2.70)
Clashscore	190562	3843 (2.70-2.70)
Ramachandran outliers	187476	3778 (2.70-2.70)
Sidechain outliers	187428	3778 (2.70-2.70)
RSRZ outliers	180081	3538 (2.70-2.70)

The table below summarises the geometric issues observed across the polymeric chains and their fit to the electron density. The red, orange, yellow and green segments of the lower bar indicate the fraction of residues that contain outliers for ≥ 3 , 2, 1 and 0 types of geometric quality criteria respectively. A grey segment represents the fraction of residues that are not modelled. The numeric value for each fraction is indicated below the corresponding segment, with a dot representing fractions $\leq 5\%$. The upper red bar (where present) indicates the fraction of residues that have poor fit to the electron density. The numeric value is given above the bar.

Mol	Chain	Length	Quality of chain
1	A	428	

2 Entry composition [i](#)

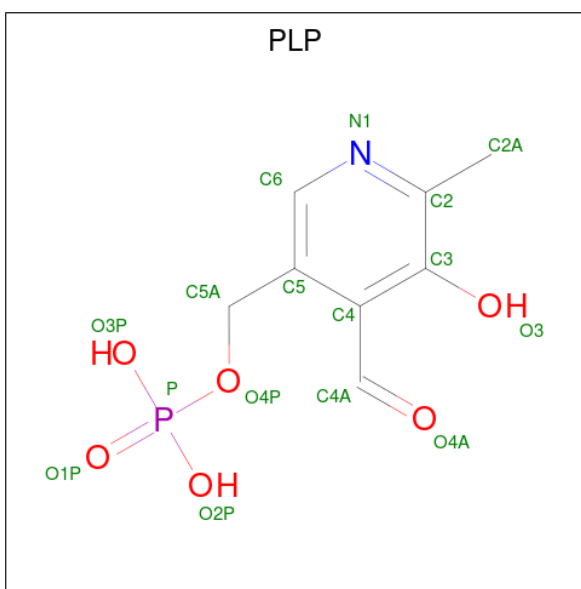
There are 4 unique types of molecules in this entry. The entry contains 3394 atoms, of which 0 are hydrogens and 0 are deuteriums.

In the tables below, the ZeroOcc column contains the number of atoms modelled with zero occupancy, the AltConf column contains the number of residues with at least one atom in alternate conformation and the Trace column contains the number of residues modelled with at most 2 atoms.

- Molecule 1 is a protein called 1-AMINOCYCLOPROPANE-1-CARBOXYLATE SYNTHASE 2.

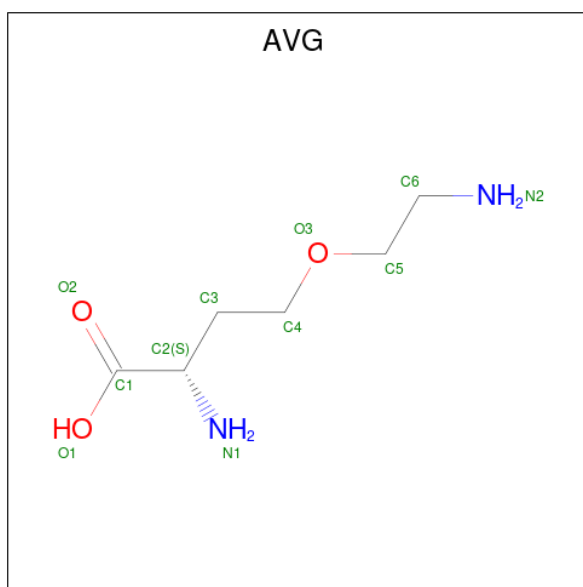
Mol	Chain	Residues	Atoms					ZeroOcc	AltConf	Trace
			Total	C	N	O	S			
1	A	419	3322	2118	568	614	22	0	0	0

- Molecule 2 is PYRIDOXAL-5'-PHOSPHATE (CCD ID: PLP) (formula: C₈H₁₀NO₆P).



Mol	Chain	Residues	Atoms					ZeroOcc	AltConf
			Total	C	N	O	P		
2	A	1	15	8	1	5	1	0	0

- Molecule 3 is 2-AMINO-4-(2-AMINO-ETHOXY)-BUTYRIC ACID (CCD ID: AVG) (formula: C₆H₁₄N₂O₃).



Mol	Chain	Residues	Atoms				ZeroOcc	AltConf
			Total	C	N	O		
3	A	1	11	6	2	3	0	0

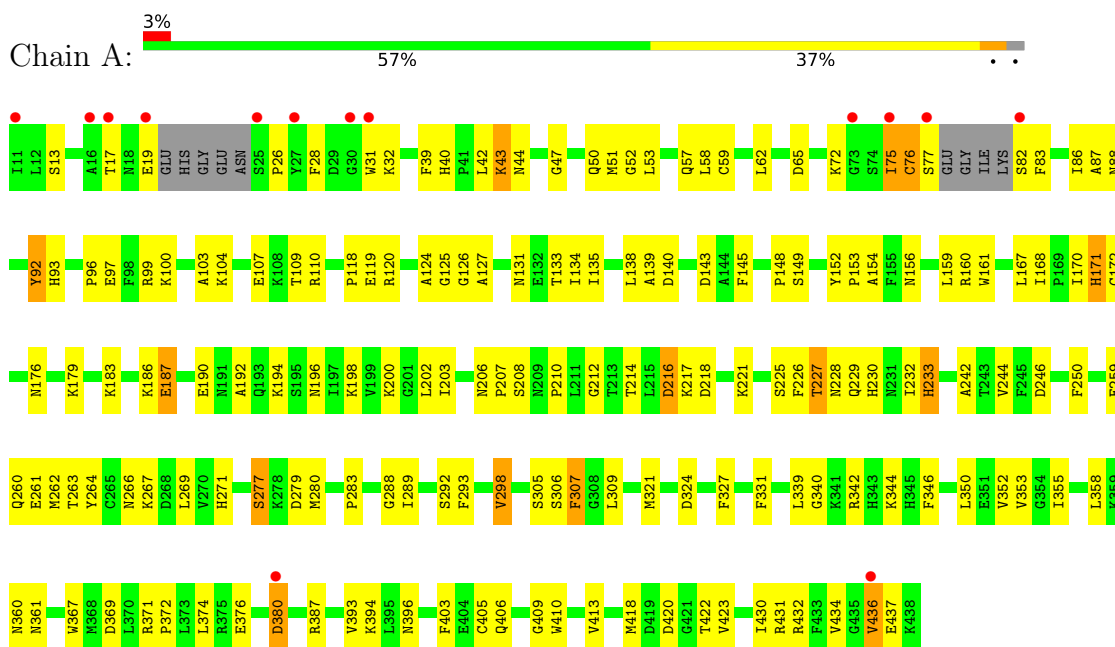
- Molecule 4 is water.

Mol	Chain	Residues	Atoms		ZeroOcc	AltConf
			Total	O		
4	A	46	46	46	0	0

3 Residue-property plots

These plots are drawn for all protein, RNA, DNA and oligosaccharide chains in the entry. The first graphic for a chain summarises the proportions of the various outlier classes displayed in the second graphic. The second graphic shows the sequence view annotated by issues in geometry and electron density. Residues are color-coded according to the number of geometric quality criteria for which they contain at least one outlier: green = 0, yellow = 1, orange = 2 and red = 3 or more. A red dot above a residue indicates a poor fit to the electron density ($RSRZ > 2$). Stretches of 2 or more consecutive residues without any outlier are shown as a green connector. Residues present in the sample, but not in the model, are shown in grey.

• Molecule 1: 1-AMINOCYCLOPROPANE-1-CARBOXYLATE SYNTHASE 2



4 Data and refinement statistics

Property	Value	Source
Space group	P 62 2 2	Depositor
Cell constants a, b, c, α , β , γ	123.10Å 123.10Å 106.80Å 90.00° 90.00° 120.00°	Depositor
Resolution (Å)	50.00 – 2.70 50.00 – 2.70	Depositor EDS
% Data completeness (in resolution range)	(Not available) (50.00-2.70) 87.2 (50.00-2.70)	Depositor EDS
R_{merge}	0.11	Depositor
R_{sym}	(Not available)	Depositor
$\langle I/\sigma(I) \rangle$ ¹	1.03 (at 2.45Å)	Xtrriage
Refinement program	CNS	Depositor
R, R_{free}	0.215 , 0.290 0.211 , 0.276	Depositor DCC
R_{free} test set	1354 reflections (10.27%)	wwPDB-VP
Wilson B-factor (Å ²)	30.5	Xtrriage
Anisotropy	0.085	Xtrriage
Bulk solvent k_{sol} (e/Å ³), B_{sol} (Å ²)	0.33 , 47.5	EDS
L-test for twinning ²	$\langle L \rangle = 0.49$, $\langle L^2 \rangle = 0.32$	Xtrriage
Estimated twinning fraction	No twinning to report.	Xtrriage
F_o, F_c correlation	0.92	EDS
Total number of atoms	3394	wwPDB-VP
Average B, all atoms (Å ²)	31.0	wwPDB-VP

Xtrriage's analysis on translational NCS is as follows: *The largest off-origin peak in the Patterson function is 5.17% of the height of the origin peak. No significant pseudotranslation is detected.*

¹Intensities estimated from amplitudes.

²Theoretical values of $\langle |L| \rangle$, $\langle L^2 \rangle$ for acentric reflections are 0.5, 0.333 respectively for untwinned datasets, and 0.375, 0.2 for perfectly twinned datasets.

5 Model quality i

5.1 Standard geometry i

Bond lengths and bond angles in the following residue types are not validated in this section: AVG, PLP

The Z score for a bond length (or angle) is the number of standard deviations the observed value is removed from the expected value. A bond length (or angle) with $|Z| > 5$ is considered an outlier worth inspection. RMSZ is the root-mean-square of all Z scores of the bond lengths (or angles).

Mol	Chain	Bond lengths		Bond angles	
		RMSZ	# Z >5	RMSZ	# Z >5
1	A	0.45	0/3396	0.96	14/4589 (0.3%)

There are no bond length outliers.

All (14) bond angle outliers are listed below:

Mol	Chain	Res	Type	Atoms	Z	Observed(°)	Ideal(°)
1	A	93	HIS	N-CA-C	-8.55	102.84	113.28
1	A	92	TYR	N-CA-C	6.04	120.33	113.15
1	A	405	CYS	N-CA-C	-5.89	101.69	110.23
1	A	394	LYS	N-CA-C	5.60	119.12	111.39
1	A	393	VAL	N-CA-C	-5.47	106.49	113.22
1	A	307	PHE	N-CA-C	-5.40	107.06	113.97
1	A	208	SER	N-CA-C	5.34	118.64	110.20
1	A	233	HIS	N-CA-C	5.29	117.69	110.55
1	A	352	VAL	N-CA-C	-5.23	105.50	110.42
1	A	260	GLN	N-CA-C	5.15	116.58	111.07
1	A	43	LYS	N-CA-C	5.08	116.50	111.07
1	A	171	HIS	N-CA-C	5.07	117.59	110.23
1	A	277	SER	N-CA-C	5.04	117.50	111.71
1	A	264	TYR	N-CA-C	5.00	119.02	113.02

There are no chirality outliers.

There are no planarity outliers.

5.2 Too-close contacts i

In the following table, the Non-H and H(model) columns list the number of non-hydrogen atoms and hydrogen atoms in the chain respectively. The H(added) column lists the number of hydrogen

atoms added and optimized by MolProbity. The Clashes column lists the number of clashes within the asymmetric unit, whereas Symm-Clashes lists symmetry-related clashes.

Mol	Chain	Non-H	H(model)	H(added)	Clashes	Symm-Clashes
1	A	3322	0	3283	127	0
2	A	15	0	7	1	0
3	A	11	0	13	0	0
4	A	46	0	0	2	0
All	All	3394	0	3303	127	0

The all-atom clashscore is defined as the number of clashes found per 1000 atoms (including hydrogen atoms). The all-atom clashscore for this structure is 19.

All (127) close contacts within the same asymmetric unit are listed below, sorted by their clash magnitude.

Atom-1	Atom-2	Interatomic distance (Å)	Clash overlap (Å)
1:A:228:ASN:HD21	1:A:266:ASN:H	1.18	0.91
1:A:58:LEU:HD12	1:A:339:LEU:HD23	1.60	0.82
1:A:152:TYR:CE2	1:A:154:ALA:HB3	2.17	0.79
1:A:194:LYS:HA	1:A:194:LYS:HE2	1.65	0.79
1:A:13:SER:O	1:A:17:THR:HG22	1.83	0.77
1:A:76:CYS:HB3	1:A:83:PHE:HB2	1.69	0.74
1:A:100:LYS:HE3	1:A:104:LYS:HE3	1.71	0.73
1:A:432:ARG:CZ	1:A:436:VAL:HG21	2.20	0.72
1:A:212:GLY:O	1:A:360:ASN:HB2	1.88	0.72
1:A:353:VAL:CG1	1:A:431:ARG:HG3	2.19	0.71
1:A:353:VAL:HG11	1:A:431:ARG:HA	1.73	0.70
1:A:277:SER:OG	1:A:283:PRO:HA	1.91	0.70
1:A:342:ARG:HH12	1:A:420:ASP:HA	1.57	0.70
1:A:156:ASN:O	1:A:160:ARG:HD3	1.92	0.70
1:A:228:ASN:HD21	1:A:266:ASN:N	1.89	0.70
1:A:149:SER:O	1:A:172:CYS:HB2	1.92	0.69
1:A:156:ASN:HB3	1:A:160:ARG:HH11	1.59	0.67
1:A:76:CYS:HB2	1:A:82:SER:N	2.09	0.67
1:A:156:ASN:HB3	1:A:160:ARG:NH1	2.10	0.66
1:A:50:GLN:HE22	1:A:396:ASN:HD22	1.43	0.66
1:A:50:GLN:HE21	1:A:52:GLY:H	1.44	0.66
1:A:198:LYS:HE2	1:A:200:LYS:NZ	2.11	0.66
1:A:242:ALA:HB3	1:A:279:ASP:HB2	1.77	0.65
1:A:246:ASP:O	1:A:361:ASN:HB2	1.97	0.65
1:A:244:VAL:HG21	1:A:250:PHE:HB2	1.80	0.64
1:A:298:VAL:HG22	4:A:504:HOH:O	1.98	0.64
1:A:194:LYS:HE2	1:A:194:LYS:CA	2.27	0.63

Continued on next page...

Continued from previous page...

Atom-1	Atom-2	Interatomic distance (Å)	Clash overlap (Å)
1:A:152:TYR:CZ	1:A:154:ALA:HB3	2.33	0.63
1:A:103:ALA:O	1:A:107:GLU:HG3	1.99	0.63
1:A:227:THR:HG23	1:A:232:ILE:O	1.99	0.62
1:A:346:PHE:CE2	1:A:350:LEU:HD11	2.34	0.62
1:A:233:HIS:CD2	1:A:269:LEU:HA	2.35	0.62
1:A:97:GLU:H	1:A:97:GLU:CD	2.08	0.62
1:A:206:ASN:HA	1:A:207:PRO:C	2.26	0.61
1:A:40:HIS:CD2	1:A:43:LYS:H	2.18	0.61
1:A:50:GLN:HE22	1:A:396:ASN:ND2	1.99	0.61
1:A:40:HIS:CD2	1:A:42:LEU:H	2.20	0.59
1:A:430:ILE:O	1:A:434:VAL:HG23	2.02	0.59
1:A:31:TRP:HZ3	1:A:53:LEU:HD21	1.66	0.59
1:A:40:HIS:HD2	1:A:42:LEU:H	1.50	0.58
1:A:50:GLN:NE2	1:A:52:GLY:H	2.01	0.58
1:A:127:ALA:HB3	2:A:500:PLP:O4P	2.04	0.57
1:A:371:ARG:N	1:A:372:PRO:HD2	2.18	0.57
1:A:221:LYS:HE2	1:A:259:GLU:OE1	2.05	0.56
1:A:168:ILE:HD13	1:A:192:ALA:HB2	1.89	0.55
1:A:120:ARG:NH1	1:A:292:SER:O	2.42	0.53
1:A:242:ALA:HB3	1:A:279:ASP:CB	2.39	0.53
1:A:198:LYS:HE2	1:A:200:LYS:HZ3	1.74	0.52
1:A:374:LEU:HD11	1:A:409:GLY:CA	2.38	0.52
1:A:148:PRO:HA	1:A:170:ILE:HB	1.92	0.52
1:A:271:HIS:HD1	1:A:292:SER:HG	1.54	0.52
1:A:202:LEU:HD23	1:A:203:ILE:N	2.25	0.52
1:A:280:MET:HE1	1:A:321:MET:HE3	1.91	0.51
1:A:176:ASN:ND2	1:A:179:LYS:HB2	2.25	0.51
1:A:100:LYS:CE	1:A:104:LYS:HE3	2.40	0.51
1:A:120:ARG:NH1	1:A:298:VAL:HG21	2.26	0.51
1:A:183:LYS:O	1:A:187:GLU:HB2	2.11	0.51
1:A:51:MET:HE2	1:A:413:VAL:HG12	1.94	0.50
1:A:207:PRO:HG3	1:A:214:THR:HG22	1.94	0.50
1:A:353:VAL:HG11	1:A:431:ARG:HG3	1.94	0.49
1:A:40:HIS:HD2	1:A:42:LEU:N	2.10	0.49
1:A:227:THR:HG22	1:A:228:ASN:N	2.26	0.49
1:A:131:ASN:O	1:A:134:ILE:HG22	2.13	0.49
1:A:171:HIS:HA	1:A:406:GLN:OE1	2.12	0.49
1:A:229:GLN:C	1:A:230:HIS:HD2	2.20	0.49
1:A:99:ARG:HD2	1:A:118:PRO:O	2.12	0.49
1:A:432:ARG:NH1	1:A:436:VAL:HG21	2.27	0.48
1:A:228:ASN:ND2	1:A:266:ASN:H	1.99	0.48

Continued on next page...

Continued from previous page...

Atom-1	Atom-2	Interatomic distance (Å)	Clash overlap (Å)
1:A:39:PHE:HA	1:A:47:GLY:HA3	1.95	0.48
1:A:353:VAL:HG23	1:A:355:ILE:HG13	1.94	0.48
1:A:76:CYS:SG	1:A:76:CYS:O	2.71	0.48
1:A:261:GLU:O	1:A:262:MET:HE2	2.14	0.48
1:A:217:LYS:HE2	1:A:259:GLU:OE2	2.14	0.47
1:A:226:PHE:CE1	1:A:230:HIS:CE1	3.02	0.47
1:A:369:ASP:HB2	1:A:410:TRP:CZ3	2.48	0.47
1:A:72:LYS:CG	1:A:77:SER:HB2	2.44	0.47
1:A:140:ASP:N	1:A:143:ASP:OD2	2.38	0.47
1:A:267:LYS:HB3	1:A:293:PHE:HB3	1.96	0.47
1:A:131:ASN:O	1:A:135:ILE:HG12	2.14	0.47
1:A:138:LEU:HD13	1:A:233:HIS:CG	2.49	0.47
1:A:288:GLY:C	1:A:289:ILE:HD12	2.40	0.47
1:A:109:THR:HB	1:A:110:ARG:NH1	2.29	0.47
1:A:198:LYS:HE2	1:A:200:LYS:HZ2	1.79	0.47
1:A:305:SER:O	1:A:309:LEU:HG	2.14	0.47
1:A:28:PHE:O	1:A:32:LYS:HG3	2.15	0.46
1:A:143:ASP:HB3	1:A:200:LYS:HG2	1.98	0.46
1:A:216:ASP:OD1	1:A:218:ASP:N	2.49	0.46
1:A:138:LEU:HD11	1:A:271:HIS:CD2	2.50	0.46
1:A:51:MET:HE2	1:A:413:VAL:CG1	2.46	0.46
1:A:40:HIS:HB3	1:A:44:ASN:H	1.81	0.45
1:A:156:ASN:CB	1:A:160:ARG:HH11	2.26	0.45
1:A:139:ALA:HB1	1:A:143:ASP:HB2	1.98	0.44
1:A:31:TRP:C	1:A:31:TRP:CD1	2.95	0.44
1:A:59:CYS:HB2	1:A:331:PHE:CE1	2.52	0.44
1:A:153:PRO:HD3	1:A:403:PHE:CD2	2.52	0.44
1:A:194:LYS:C	1:A:196:ASN:H	2.25	0.44
1:A:305:SER:C	1:A:307:PHE:H	2.25	0.44
1:A:340:GLY:O	1:A:344:LYS:HD3	2.17	0.44
1:A:229:GLN:C	1:A:230:HIS:CD2	2.95	0.43
1:A:72:LYS:O	1:A:77:SER:HB3	2.19	0.43
1:A:374:LEU:HB3	1:A:376:GLU:O	2.19	0.43
1:A:267:LYS:N	1:A:267:LYS:CD	2.82	0.43
1:A:100:LYS:HD3	1:A:118:PRO:HG3	2.01	0.43
1:A:131:ASN:HB3	1:A:159:LEU:HD21	2.01	0.43
1:A:380:ASP:OD1	1:A:380:ASP:N	2.48	0.43
1:A:160:ARG:HD2	1:A:167:LEU:HD12	2.01	0.43
1:A:266:ASN:HB3	1:A:269:LEU:HD12	2.00	0.43
1:A:324:ASP:OD2	1:A:327:PHE:HB2	2.18	0.43
1:A:97:GLU:CD	1:A:97:GLU:N	2.76	0.42

Continued on next page...

Continued from previous page...

Atom-1	Atom-2	Interatomic distance (Å)	Clash overlap (Å)
1:A:186:LYS:O	1:A:190:GLU:HG3	2.19	0.42
1:A:57:GLN:C	1:A:59:CYS:H	2.27	0.42
1:A:387:ARG:HA	1:A:387:ARG:HD3	1.73	0.42
1:A:124:ALA:O	1:A:126:GLY:N	2.53	0.42
1:A:39:PHE:HB2	1:A:47:GLY:C	2.44	0.41
1:A:358:LEU:HB3	1:A:367:TRP:HB3	2.02	0.41
1:A:261:GLU:C	1:A:262:MET:HE2	2.45	0.41
1:A:75:ILE:O	1:A:75:ILE:HG13	2.20	0.41
1:A:109:THR:HG23	1:A:242:ALA:HB2	2.03	0.41
1:A:342:ARG:NH1	1:A:423:VAL:HG21	2.35	0.41
1:A:369:ASP:OD1	1:A:369:ASP:C	2.64	0.41
1:A:86:ILE:HG13	1:A:87:ALA:N	2.36	0.41
1:A:436:VAL:O	1:A:437:GLU:HG2	2.21	0.41
1:A:50:GLN:NE2	1:A:396:ASN:HD22	2.14	0.41
1:A:418:MET:HG3	1:A:422:THR:HB	2.03	0.40
1:A:75:ILE:HG13	4:A:526:HOH:O	2.22	0.40
1:A:19:GLU:OE1	1:A:161:TRP:CZ2	2.75	0.40
1:A:59:CYS:O	1:A:62:LEU:N	2.48	0.40

There are no symmetry-related clashes.

5.3 Torsion angles [i](#)

5.3.1 Protein backbone [i](#)

In the following table, the Percentiles column shows the percent Ramachandran outliers of the chain as a percentile score with respect to all X-ray entries followed by that with respect to entries of similar resolution.

The Analysed column shows the number of residues for which the backbone conformation was analysed, and the total number of residues.

Mol	Chain	Analysed	Favoured	Allowed	Outliers	Percentiles
1	A	413/428 (96%)	383 (93%)	26 (6%)	4 (1%)	12 32

All (4) Ramachandran outliers are listed below:

Mol	Chain	Res	Type
1	A	436	VAL
1	A	26	PRO
1	A	75	ILE

Continued on next page...

Continued from previous page...

Mol	Chain	Res	Type
1	A	125	GLY

5.3.2 Protein sidechains [i](#)

In the following table, the Percentiles column shows the percent sidechain outliers of the chain as a percentile score with respect to all X-ray entries followed by that with respect to entries of similar resolution.

The Analysed column shows the number of residues for which the sidechain conformation was analysed, and the total number of residues.

Mol	Chain	Analysed	Rotameric	Outliers	Percentiles
1	A	366/373 (98%)	349 (95%)	17 (5%)	24 51

All (17) residues with a non-rotameric sidechain are listed below:

Mol	Chain	Res	Type
1	A	65	ASP
1	A	76	CYS
1	A	88	ASN
1	A	92	TYR
1	A	96	PRO
1	A	119	GLU
1	A	133	THR
1	A	145	PHE
1	A	187	GLU
1	A	210	PRO
1	A	216	ASP
1	A	225	SER
1	A	227	THR
1	A	263	THR
1	A	298	VAL
1	A	306	SER
1	A	380	ASP

Sometimes sidechains can be flipped to improve hydrogen bonding and reduce clashes. All (11) such sidechains are listed below:

Mol	Chain	Res	Type
1	A	18	ASN
1	A	40	HIS
1	A	50	GLN

Continued on next page...

Continued from previous page...

Mol	Chain	Res	Type
1	A	88	ASN
1	A	171	HIS
1	A	193	GLN
1	A	228	ASN
1	A	229	GLN
1	A	230	HIS
1	A	233	HIS
1	A	396	ASN

5.3.3 RNA [i](#)

There are no RNA molecules in this entry.

5.4 Non-standard residues in protein, DNA, RNA chains [i](#)

There are no non-standard protein/DNA/RNA residues in this entry.

5.5 Carbohydrates [i](#)

There are no oligosaccharides in this entry.

5.6 Ligand geometry [i](#)

2 ligands are modelled in this entry.

In the following table, the Counts columns list the number of bonds (or angles) for which Mogul statistics could be retrieved, the number of bonds (or angles) that are observed in the model and the number of bonds (or angles) that are defined in the Chemical Component Dictionary. The Link column lists molecule types, if any, to which the group is linked. The Z score for a bond length (or angle) is the number of standard deviations the observed value is removed from the expected value. A bond length (or angle) with $|Z| > 2$ is considered an outlier worth inspection. RMSZ is the root-mean-square of all Z scores of the bond lengths (or angles).

Mol	Type	Chain	Res	Link	Bond lengths			Bond angles		
					Counts	RMSZ	$\# Z > 2$	Counts	RMSZ	$\# Z > 2$
2	PLP	A	500	1	15,15,16	1.13	0	21,22,23	0.88	1 (4%)
3	AVG	A	501	-	9,10,10	1.48	2 (22%)	7,11,11	1.04	1 (14%)

In the following table, the Chirals column lists the number of chiral outliers, the number of chiral centers analysed, the number of these observed in the model and the number defined in the

Chemical Component Dictionary. Similar counts are reported in the Torsion and Rings columns. '-' means no outliers of that kind were identified.

Mol	Type	Chain	Res	Link	Chirals	Torsions	Rings
2	PLP	A	500	1	-	0/6/6/8	0/1/1/1
3	AVG	A	501	-	-	5/10/10/10	-

All (2) bond length outliers are listed below:

Mol	Chain	Res	Type	Atoms	Z	Observed(Å)	Ideal(Å)
3	A	501	AVG	O2-C1	3.09	1.31	1.22
3	A	501	AVG	O1-C1	-2.13	1.23	1.30

All (2) bond angle outliers are listed below:

Mol	Chain	Res	Type	Atoms	Z	Observed(°)	Ideal(°)
2	A	500	PLP	C5-C6-N1	-2.03	120.53	123.83
3	A	501	AVG	O1-C1-O2	-2.02	119.49	124.08

There are no chirality outliers.

All (5) torsion outliers are listed below:

Mol	Chain	Res	Type	Atoms
3	A	501	AVG	C6-C5-O3-C4
3	A	501	AVG	C3-C4-O3-C5
3	A	501	AVG	C1-C2-C3-C4
3	A	501	AVG	O1-C1-C2-N1
3	A	501	AVG	C2-C3-C4-O3

There are no ring outliers.

1 monomer is involved in 1 short contact:

Mol	Chain	Res	Type	Clashes	Symm-Clashes
2	A	500	PLP	1	0

5.7 Other polymers [i](#)

There are no such residues in this entry.

5.8 Polymer linkage issues

There are no chain breaks in this entry.

6 Fit of model and data [i](#)

6.1 Protein, DNA and RNA chains [i](#)

In the following table, the column labelled ‘#RSRZ > 2’ contains the number (and percentage) of RSRZ outliers, followed by percent RSRZ outliers for the chain as percentile scores relative to all X-ray entries and entries of similar resolution. The OWAB column contains the minimum, median, 95th percentile and maximum values of the occupancy-weighted average B-factor per residue. The column labelled ‘Q < 0.9’ lists the number of (and percentage) of residues with an average occupancy less than 0.9.

Mol	Chain	Analysed	<RSRZ>	#RSRZ>2	OWAB(Å ²)	Q<0.9
1	A	419/428 (97%)	0.04	14 (3%) 49 45	10, 27, 57, 75	0

All (14) RSRZ outliers are listed below:

Mol	Chain	Res	Type	RSRZ
1	A	75	ILE	4.2
1	A	17	THR	3.6
1	A	31	TRP	3.5
1	A	19	GLU	3.4
1	A	380	ASP	3.4
1	A	27	TYR	3.3
1	A	77	SER	2.8
1	A	11	ILE	2.4
1	A	25	SER	2.3
1	A	82	SER	2.2
1	A	436	VAL	2.2
1	A	73	GLY	2.2
1	A	30	GLY	2.1
1	A	16	ALA	2.1

6.2 Non-standard residues in protein, DNA, RNA chains [i](#)

There are no non-standard protein/DNA/RNA residues in this entry.

6.3 Carbohydrates [i](#)

There are no oligosaccharides in this entry.

6.4 Ligands [i](#)

In the following table, the Atoms column lists the number of modelled atoms in the group and the number defined in the chemical component dictionary. The B-factors column lists the minimum, median, 95th percentile and maximum values of B factors of atoms in the group. The column labelled 'Q< 0.9' lists the number of atoms with occupancy less than 0.9.

Mol	Type	Chain	Res	Atoms	RSCC	RSR	B-factors(Å ²)	Q<0.9
3	AVG	A	501	11/11	0.68	0.24	72,73,74,75	0
2	PLP	A	500	15/16	0.81	0.27	46,48,65,66	1

6.5 Other polymers [i](#)

There are no such residues in this entry.