



# Full wwPDB X-ray Structure Validation Report ⓘ

Mar 8, 2026 – 05:37 PM UTC

PDB ID : 1ZWI / pdb\_00001zwi  
Title : Structure of mutant KcsA potassium channel  
Authors : Cordero-Morales, J.F.; Cuello, L.G.; Zhao, Y.; Jogini, V.; Cortes, D.M.; Roux, B.; Perozo, E.  
Deposited on : 2005-06-03  
Resolution : 2.50 Å(reported)

This is a Full wwPDB X-ray Structure Validation Report for a publicly released PDB entry.

We welcome your comments at [validation@mail.wwpdb.org](mailto:validation@mail.wwpdb.org)

A user guide is available at

<https://www.wwpdb.org/validation/2017/XrayValidationReportHelp>

with specific help available everywhere you see the ⓘ symbol.

The types of validation reports are described at

<http://www.wwpdb.org/validation/2017/FAQs#types>.

---

The following versions of software and data (see [references ⓘ](#)) were used in the production of this report:

MolProbity : 4-5-2 with Phenix2.0  
Mogul : 2022.3.0, CSD as543be (2022)  
Xtrriage (Phenix) : 2.0  
EDS : 3.0  
Buster-report : wwPDB partial adaption of 1.1.7 (2018)  
Percentile statistics : 20250101.v01 (using entries in the PDB archive January 1st 2025)  
CCP4 : 9.0.010 (Gargrove)  
Density-Fitness : 1.0.12  
Ideal geometry (proteins) : Engh & Huber (2001)  
Ideal geometry (DNA, RNA) : Parkinson et al. (1996)  
Validation Pipeline (wwPDB-VP) : 2.49

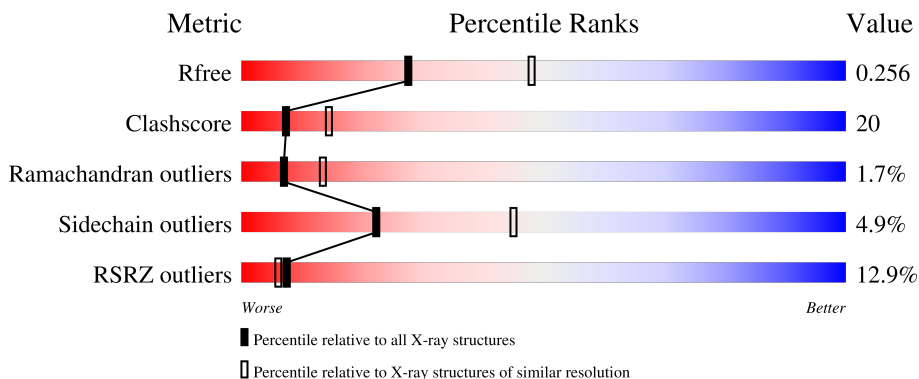
# 1 Overall quality at a glance

The following experimental techniques were used to determine the structure:

*X-RAY DIFFRACTION*

The reported resolution of this entry is 2.50 Å.

Percentile scores (ranging between 0-100) for global validation metrics of the entry are shown in the following graphic. The table shows the number of entries on which the scores are based.



Metric	Whole archive (#Entries)	Similar resolution (#Entries, resolution range(Å))
$R_{free}$	180053	5829 (2.50-2.50)
Clashscore	190562	6492 (2.50-2.50)
Ramachandran outliers	187476	6378 (2.50-2.50)
Sidechain outliers	187428	6380 (2.50-2.50)
RSRZ outliers	180081	5833 (2.50-2.50)

The table below summarises the geometric issues observed across the polymeric chains and their fit to the electron density. The red, orange, yellow and green segments of the lower bar indicate the fraction of residues that contain outliers for  $\geq 3$ , 2, 1 and 0 types of geometric quality criteria respectively. A grey segment represents the fraction of residues that are not modelled. The numeric value for each fraction is indicated below the corresponding segment, with a dot representing fractions  $\leq 5\%$ . The upper red bar (where present) indicates the fraction of residues that have poor fit to the electron density. The numeric value is given above the bar.

Mol	Chain	Length	Quality of chain
1	A	219	
2	B	212	
3	C	103	

## 2 Entry composition [i](#)

There are 7 unique types of molecules in this entry. The entry contains 4150 atoms, of which 0 are hydrogens and 0 are deuteriums.

In the tables below, the ZeroOcc column contains the number of atoms modelled with zero occupancy, the AltConf column contains the number of residues with at least one atom in alternate conformation and the Trace column contains the number of residues modelled with at most 2 atoms.

- Molecule 1 is a protein called monoclonal antibody, heavy chain.

Mol	Chain	Residues	Atoms					ZeroOcc	AltConf	Trace
			Total	C	N	O	S			
1	A	219	1648	1042	275	325	6	0	0	0

- Molecule 2 is a protein called monoclonal antibody light chain.

Mol	Chain	Residues	Atoms					ZeroOcc	AltConf	Trace
			Total	C	N	O	S			
2	B	212	1649	1023	283	338	5	0	0	0

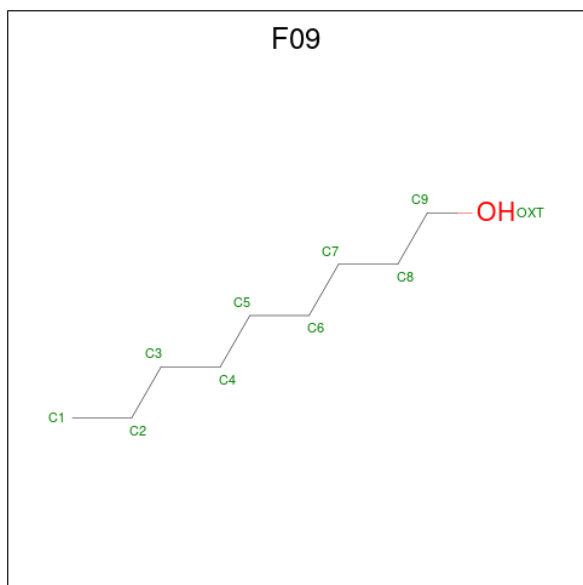
- Molecule 3 is a protein called Voltage-gated potassium channel.

Mol	Chain	Residues	Atoms					ZeroOcc	AltConf	Trace
			Total	C	N	O	S			
3	C	103	768	502	133	131	2	0	0	0

There are 3 discrepancies between the modelled and reference sequences:

Chain	Residue	Modelled	Actual	Comment	Reference
C	71	ALA	GLU	engineered mutation	UNP P0A334
C	90	CYS	LEU	engineered mutation	UNP P0A334
C	124	ALA	-	cloning artifact	UNP P0A334

- Molecule 4 is NONAN-1-OL (CCD ID: F09) (formula: C<sub>9</sub>H<sub>20</sub>O).

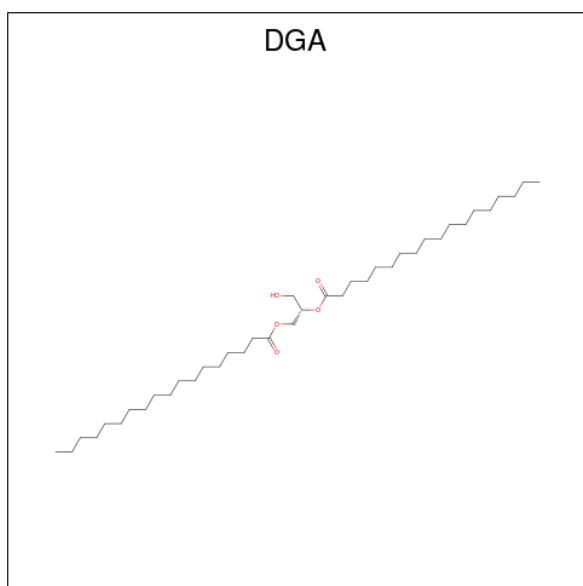


Mol	Chain	Residues	Atoms			ZeroOcc	AltConf
4	A	1	Total	C	O	0	0
			10	9	1		

- Molecule 5 is POTASSIUM ION (CCD ID: K) (formula: K).

Mol	Chain	Residues	Atoms		ZeroOcc	AltConf
5	C	7	Total	K	0	0
			7	7		

- Molecule 6 is DIACYL GLYCEROL (CCD ID: DGA) (formula: C<sub>39</sub>H<sub>76</sub>O<sub>5</sub>).



Mol	Chain	Residues	Atoms			ZeroOcc	AltConf
6	C	1	Total	C	O	0	0
			31	26	5		

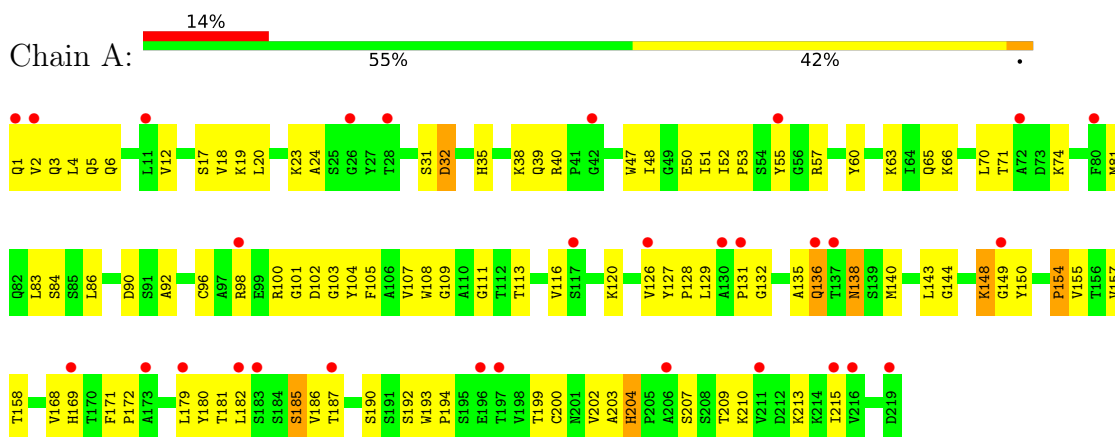
- Molecule 7 is water.

Mol	Chain	Residues	Atoms		ZeroOcc	AltConf
7	A	7	Total	O	0	0
			7	7		
7	B	15	Total	O	0	0
			15	15		
7	C	15	Total	O	0	0
			15	15		

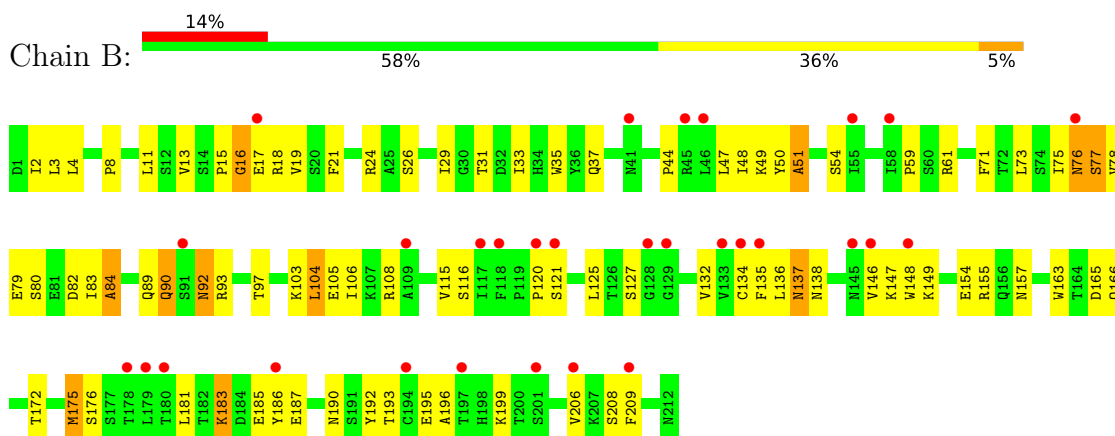
### 3 Residue-property plots [i](#)

These plots are drawn for all protein, RNA, DNA and oligosaccharide chains in the entry. The first graphic for a chain summarises the proportions of the various outlier classes displayed in the second graphic. The second graphic shows the sequence view annotated by issues in geometry and electron density. Residues are color-coded according to the number of geometric quality criteria for which they contain at least one outlier: green = 0, yellow = 1, orange = 2 and red = 3 or more. A red dot above a residue indicates a poor fit to the electron density ( $RSRZ > 2$ ). Stretches of 2 or more consecutive residues without any outlier are shown as a green connector. Residues present in the sample, but not in the model, are shown in grey.

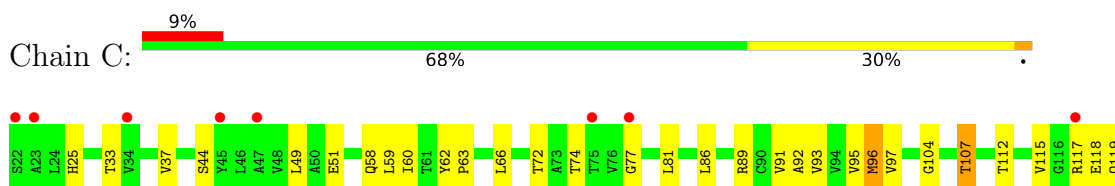
- Molecule 1: monoclonal antibody, heavy chain



- Molecule 2: monoclonal antibody light chain



- Molecule 3: Voltage-gated potassium channel





## 4 Data and refinement statistics i

Property	Value	Source
Space group	I 4	Depositor
Cell constants a, b, c, $\alpha$ , $\beta$ , $\gamma$	155.98Å 155.98Å 75.96Å 90.00° 90.00° 90.00°	Depositor
Resolution (Å)	50.00 – 2.50 50.00 – 2.50	Depositor EDS
% Data completeness (in resolution range)	85.7 (50.00-2.50) 85.6 (50.00-2.50)	Depositor EDS
$R_{merge}$	(Not available)	Depositor
$R_{sym}$	(Not available)	Depositor
$\langle I/\sigma(I) \rangle$ <sup>1</sup>	1.45 (at 2.39Å)	Xtrriage
Refinement program	CNS	Depositor
R, $R_{free}$	0.243 , 0.256 0.246 , 0.256	Depositor DCC
$R_{free}$ test set	1818 reflections (6.02%)	wwPDB-VP
Wilson B-factor (Å <sup>2</sup> )	60.5	Xtrriage
Anisotropy	0.502	Xtrriage
Bulk solvent $k_{sol}$ (e/Å <sup>3</sup> ), $B_{sol}$ (Å <sup>2</sup> )	0.27 , 35.9	EDS
L-test for twinning <sup>2</sup>	$\langle  L  \rangle = 0.49$ , $\langle L^2 \rangle = 0.32$	Xtrriage
Estimated twinning fraction	0.034 for -k,-h,-l	Xtrriage
$F_o, F_c$ correlation	0.94	EDS
Total number of atoms	4150	wwPDB-VP
Average B, all atoms (Å <sup>2</sup> )	83.0	wwPDB-VP

Xtrriage's analysis on translational NCS is as follows: *The largest off-origin peak in the Patterson function is 3.69% of the height of the origin peak. No significant pseudotranslation is detected.*

<sup>1</sup>Intensities estimated from amplitudes.

<sup>2</sup>Theoretical values of  $\langle |L| \rangle$ ,  $\langle L^2 \rangle$  for acentric reflections are 0.5, 0.333 respectively for untwinned datasets, and 0.375, 0.2 for perfectly twinned datasets.

## 5 Model quality [i](#)

### 5.1 Standard geometry [i](#)

Bond lengths and bond angles in the following residue types are not validated in this section: K, DGA, F09

The Z score for a bond length (or angle) is the number of standard deviations the observed value is removed from the expected value. A bond length (or angle) with  $|Z| > 5$  is considered an outlier worth inspection. RMSZ is the root-mean-square of all Z scores of the bond lengths (or angles).

Mol	Chain	Bond lengths		Bond angles	
		RMSZ	# Z  >5	RMSZ	# Z  >5
1	A	0.44	0/1692	0.98	5/2312 (0.2%)
2	B	0.45	0/1686	0.90	3/2287 (0.1%)
3	C	0.59	0/787	1.07	3/1080 (0.3%)
All	All	0.48	0/4165	0.97	11/5679 (0.2%)

There are no bond length outliers.

All (11) bond angle outliers are listed below:

Mol	Chain	Res	Type	Atoms	Z	Observed(°)	Ideal(°)
3	C	60	ILE	N-CA-C	12.37	124.99	111.88
1	A	204	HIS	CA-C-N	7.89	129.70	119.84
1	A	204	HIS	C-N-CA	7.89	129.70	119.84
1	A	103	GLY	N-CA-C	7.48	123.99	115.08
1	A	32	ASP	N-CA-C	6.52	119.73	109.96
2	B	137	ASN	N-CA-C	6.15	119.73	109.95
3	C	74	THR	N-CA-C	-5.61	106.40	113.18
2	B	92	ASN	N-CA-C	5.46	117.03	111.14
1	A	66	LYS	N-CA-C	5.33	116.83	109.15
3	C	77	GLY	N-CA-C	5.15	125.39	113.18
2	B	138	ASN	N-CA-C	5.03	118.38	111.54

There are no chirality outliers.

There are no planarity outliers.

### 5.2 Too-close contacts [i](#)

In the following table, the Non-H and H(model) columns list the number of non-hydrogen atoms and hydrogen atoms in the chain respectively. The H(added) column lists the number of hydrogen

atoms added and optimized by MolProbity. The Clashes column lists the number of clashes within the asymmetric unit, whereas Symm-Clashes lists symmetry-related clashes.

Mol	Chain	Non-H	H(model)	H(added)	Clashes	Symm-Clashes
1	A	1648	0	1616	70	0
2	B	1649	0	1576	84	0
3	C	768	0	787	24	0
4	A	10	0	19	0	0
5	C	7	0	0	0	0
6	C	31	0	44	0	0
7	A	7	0	0	0	0
7	B	15	0	0	1	0
7	C	15	0	0	0	0
All	All	4150	0	4042	167	0

The all-atom clashscore is defined as the number of clashes found per 1000 atoms (including hydrogen atoms). The all-atom clashscore for this structure is 20.

All (167) close contacts within the same asymmetric unit are listed below, sorted by their clash magnitude.

Atom-1	Atom-2	Interatomic distance (Å)	Clash overlap (Å)
1:A:148:LYS:HB3	1:A:181:THR:HG23	1.59	0.84
3:C:44:SER:OG	3:C:66:LEU:HA	1.88	0.74
1:A:136:GLN:NE2	1:A:136:GLN:H	1.86	0.73
1:A:6:GLN:HE21	1:A:109:GLY:HA3	1.55	0.72
2:B:155:ARG:HE	2:B:157:ASN:HB2	1.54	0.72
2:B:76:ASN:O	2:B:77:SER:HB3	1.89	0.72
2:B:33:ILE:HG22	2:B:51:ALA:HB2	1.71	0.71
1:A:81:MET:HE3	1:A:83:LEU:HG	1.73	0.71
2:B:147:LYS:HB3	2:B:195:GLU:HB2	1.73	0.70
2:B:183:LYS:O	2:B:187:GLU:HG2	1.92	0.70
1:A:136:GLN:H	1:A:136:GLN:HE21	1.40	0.69
1:A:31:SER:HB2	3:C:62:TYR:CE1	2.27	0.69
2:B:163:TRP:CD1	2:B:175:MET:HG3	2.27	0.69
1:A:207:SER:O	1:A:209:THR:HG23	1.95	0.67
1:A:140:MET:HE3	1:A:187:THR:HG22	1.77	0.67
1:A:6:GLN:NE2	1:A:111:GLY:H	1.93	0.66
2:B:90:GLN:HE22	2:B:93:ARG:H	1.43	0.66
2:B:106:ILE:H	2:B:166:GLN:HE22	1.44	0.66
1:A:104:TYR:CE2	2:B:49:LYS:HD2	2.31	0.65
2:B:37:GLN:HB2	2:B:47:LEU:HD11	1.79	0.65
1:A:4:LEU:HD23	1:A:96:CYS:SG	2.37	0.64
2:B:103:LYS:HE2	2:B:104:LEU:O	1.97	0.64

*Continued on next page...*

*Continued from previous page...*

Atom-1	Atom-2	Interatomic distance (Å)	Clash overlap (Å)
1:A:193:TRP:CD1	1:A:194:PRO:HA	2.33	0.64
1:A:20:LEU:HD12	1:A:81:MET:HE2	1.79	0.63
2:B:92:ASN:ND2	2:B:93:ARG:HG3	2.13	0.63
2:B:148:TRP:O	2:B:155:ARG:N	2.32	0.62
1:A:182:LEU:C	1:A:182:LEU:HD12	2.25	0.62
2:B:115:VAL:HG22	2:B:136:LEU:CD1	2.31	0.61
3:C:33:THR:O	3:C:37:VAL:HG23	2.01	0.60
1:A:129:LEU:HB2	1:A:144:GLY:O	2.02	0.59
2:B:83:ILE:CD1	2:B:166:GLN:HE21	2.15	0.59
1:A:102:ASP:O	2:B:50:TYR:OH	2.21	0.59
1:A:18:VAL:HG22	1:A:19:LYS:N	2.18	0.58
2:B:108:ARG:HD3	2:B:172:THR:HG22	1.86	0.58
1:A:81:MET:HE3	1:A:83:LEU:CG	2.33	0.58
1:A:113:THR:HB	1:A:154:PRO:HD3	1.86	0.57
2:B:93:ARG:HG2	3:C:58:GLN:HG2	1.86	0.57
1:A:157:VAL:HG22	1:A:202:VAL:HG22	1.86	0.57
2:B:76:ASN:N	2:B:76:ASN:HD22	2.02	0.57
2:B:92:ASN:HD22	2:B:93:ARG:HG3	1.68	0.57
2:B:19:VAL:HG12	2:B:75:ILE:HB	1.85	0.57
1:A:17:SER:CB	1:A:84:SER:HA	2.35	0.57
1:A:138:ASN:HD22	1:A:138:ASN:H	1.55	0.55
1:A:32:ASP:O	1:A:53:PRO:HD2	2.07	0.55
2:B:120:PRO:HD3	2:B:132:VAL:HG22	1.89	0.54
1:A:12:VAL:O	1:A:116:VAL:HA	2.08	0.54
2:B:108:ARG:HH11	2:B:172:THR:HG23	1.72	0.54
2:B:84:ALA:O	2:B:103:LYS:HD2	2.07	0.54
1:A:98:ARG:HB3	1:A:107:VAL:HG12	1.90	0.54
2:B:83:ILE:HD13	2:B:166:GLN:HE21	1.73	0.54
1:A:101:GLY:HA3	3:C:62:TYR:CE1	2.43	0.53
1:A:155:VAL:CG2	1:A:182:LEU:HD21	2.38	0.53
3:C:117:ARG:HD2	3:C:117:ARG:C	2.34	0.53
1:A:136:GLN:HG2	1:A:136:GLN:O	2.08	0.53
2:B:115:VAL:HG22	2:B:136:LEU:HD13	1.91	0.53
1:A:98:ARG:HD3	1:A:100:ARG:CZ	2.39	0.53
2:B:136:LEU:HD11	2:B:196:ALA:HB2	1.91	0.53
2:B:108:ARG:NH1	2:B:172:THR:CG2	2.73	0.52
2:B:89:GLN:HA	2:B:97:THR:O	2.10	0.52
1:A:35:HIS:CG	1:A:105:PHE:HE2	2.28	0.52
1:A:86:LEU:HD22	1:A:90:ASP:HB3	1.92	0.52
3:C:118:GLU:O	3:C:122:ARG:HG3	2.10	0.52
1:A:52:ILE:O	1:A:52:ILE:HG23	2.10	0.51

*Continued on next page...*

*Continued from previous page...*

Atom-1	Atom-2	Interatomic distance (Å)	Clash overlap (Å)
2:B:135:PHE:HB3	2:B:137:ASN:OD1	2.09	0.51
2:B:78:VAL:HG12	2:B:79:GLU:N	2.26	0.51
1:A:17:SER:HB2	1:A:84:SER:HA	1.92	0.51
1:A:128:PRO:HG3	1:A:213:LYS:HD2	1.93	0.50
3:C:51:GLU:HG3	3:C:59:LEU:HB3	1.94	0.50
2:B:155:ARG:HH21	2:B:157:ASN:HB2	1.76	0.50
1:A:38:LYS:HB2	1:A:48:ILE:HD11	1.93	0.49
1:A:168:VAL:HA	1:A:185:SER:O	2.13	0.49
2:B:19:VAL:CG1	2:B:75:ILE:HB	2.43	0.49
1:A:47:TRP:CZ2	1:A:50:GLU:HG2	2.47	0.49
3:C:93:VAL:O	3:C:97:VAL:HG23	2.12	0.49
2:B:104:LEU:HD22	2:B:105:GLU:N	2.27	0.49
2:B:35:TRP:CE2	2:B:73:LEU:HB2	2.48	0.49
2:B:76:ASN:N	2:B:76:ASN:ND2	2.61	0.48
1:A:86:LEU:HD22	1:A:90:ASP:CB	2.42	0.48
2:B:61:ARG:HD3	2:B:77:SER:O	2.13	0.48
1:A:169:HIS:CD2	2:B:137:ASN:ND2	2.81	0.48
3:C:89:ARG:O	3:C:92:ALA:HB3	2.14	0.48
1:A:6:GLN:NE2	1:A:109:GLY:HA3	2.27	0.47
3:C:72:THR:CG2	3:C:96:MET:HG3	2.44	0.47
2:B:33:ILE:HG21	2:B:71:PHE:CD2	2.50	0.47
2:B:59:PRO:C	2:B:61:ARG:H	2.22	0.47
1:A:35:HIS:O	1:A:96:CYS:HA	2.14	0.47
2:B:108:ARG:NH1	2:B:172:THR:HG23	2.30	0.47
2:B:16:GLY:O	2:B:77:SER:HA	2.15	0.47
2:B:186:TYR:HD1	2:B:192:TYR:HH	1.61	0.46
2:B:15:PRO:C	2:B:17:GLU:H	2.23	0.46
1:A:155:VAL:HG12	1:A:204:HIS:HD2	1.79	0.46
1:A:199:THR:HG23	1:A:213:LYS:C	2.39	0.46
2:B:146:VAL:HA	2:B:195:GLU:O	2.16	0.46
3:C:117:ARG:C	3:C:117:ARG:CD	2.88	0.46
1:A:47:TRP:HZ2	1:A:50:GLU:HG2	1.81	0.46
1:A:155:VAL:CG1	1:A:204:HIS:HD2	2.28	0.46
3:C:91:VAL:O	3:C:95:VAL:HG23	2.16	0.46
2:B:149:LYS:HA	2:B:154:GLU:HA	1.98	0.46
2:B:146:VAL:HG13	2:B:146:VAL:O	2.15	0.46
1:A:108:TRP:CE2	2:B:44:PRO:HB2	2.51	0.46
1:A:203:ALA:HA	1:A:210:LYS:HA	1.98	0.46
2:B:2:ILE:HD13	2:B:29:ILE:CG2	2.46	0.46
1:A:40:ARG:HA	1:A:92:ALA:CB	2.46	0.45
2:B:61:ARG:HG3	2:B:76:ASN:O	2.17	0.45

*Continued on next page...*

*Continued from previous page...*

Atom-1	Atom-2	Interatomic distance (Å)	Clash overlap (Å)
2:B:33:ILE:CG2	2:B:51:ALA:HB2	2.43	0.45
3:C:62:TYR:HB2	3:C:63:PRO:HD3	1.98	0.45
1:A:155:VAL:HG12	1:A:204:HIS:CD2	2.52	0.45
2:B:183:LYS:HB3	2:B:183:LYS:NZ	2.32	0.45
2:B:195:GLU:HG2	2:B:206:VAL:HG12	2.00	0.44
3:C:117:ARG:HD2	3:C:117:ARG:O	2.16	0.44
2:B:83:ILE:HD11	2:B:166:GLN:HE21	1.82	0.44
1:A:149:GLY:C	1:A:179:LEU:HD22	2.43	0.44
2:B:4:LEU:HA	2:B:24:ARG:O	2.18	0.44
3:C:25:HIS:CD2	3:C:112:THR:HG21	2.51	0.44
2:B:33:ILE:HD12	2:B:89:GLN:O	2.17	0.44
2:B:47:LEU:C	2:B:48:ILE:HG12	2.42	0.44
1:A:193:TRP:CG	1:A:194:PRO:HA	2.53	0.44
1:A:63:LYS:HG3	7:B:214:HOH:O	2.17	0.44
2:B:181:LEU:HD22	2:B:185:GLU:CG	2.48	0.44
2:B:187:GLU:HA	2:B:187:GLU:OE2	2.18	0.43
1:A:39:GLN:O	1:A:92:ALA:HB1	2.17	0.43
3:C:121:ARG:O	3:C:121:ARG:HG2	2.19	0.43
1:A:51:ILE:HG13	1:A:57:ARG:O	2.18	0.43
2:B:106:ILE:H	2:B:166:GLN:NE2	2.13	0.43
1:A:18:VAL:CG2	1:A:19:LYS:N	2.82	0.43
1:A:138:ASN:O	1:A:190:SER:HB3	2.19	0.43
1:A:140:MET:CE	1:A:187:THR:HG22	2.48	0.43
2:B:115:VAL:HG12	2:B:116:SER:N	2.34	0.43
3:C:104:GLY:HA2	3:C:107:THR:HG23	2.00	0.43
2:B:21:PHE:HD1	2:B:73:LEU:O	2.01	0.43
1:A:3:GLN:O	1:A:24:ALA:HA	2.18	0.42
2:B:3:LEU:HB3	2:B:26:SER:OG	2.19	0.42
2:B:155:ARG:HH12	2:B:181:LEU:HD21	1.84	0.42
2:B:104:LEU:CD2	2:B:105:GLU:N	2.82	0.42
2:B:181:LEU:HD22	2:B:185:GLU:HG2	2.00	0.42
2:B:186:TYR:HD1	2:B:192:TYR:OH	2.02	0.42
3:C:62:TYR:O	3:C:63:PRO:C	2.62	0.42
3:C:86:LEU:HD12	3:C:86:LEU:O	2.20	0.42
1:A:6:GLN:HE21	1:A:109:GLY:CA	2.25	0.42
2:B:106:ILE:N	2:B:166:GLN:HE22	2.14	0.42
2:B:116:SER:O	2:B:134:CYS:HA	2.20	0.42
1:A:143:LEU:HB3	1:A:215:ILE:HG21	2.01	0.42
2:B:104:LEU:CD2	2:B:105:GLU:H	2.33	0.42
3:C:115:VAL:O	3:C:119:GLN:HG2	2.19	0.42
1:A:171:PHE:HA	1:A:172:PRO:HD3	1.91	0.42

*Continued on next page...*

Continued from previous page...

Atom-1	Atom-2	Interatomic distance (Å)	Clash overlap (Å)
2:B:92:ASN:HD21	3:C:58:GLN:HE21	1.68	0.42
1:A:149:GLY:HA2	1:A:179:LEU:HD13	2.02	0.41
1:A:55:TYR:CD2	3:C:49:LEU:HD21	2.55	0.41
1:A:60:TYR:HE2	1:A:70:LEU:HG	1.86	0.41
2:B:165:ASP:O	2:B:166:GLN:C	2.62	0.41
2:B:13:VAL:HG23	2:B:17:GLU:CD	2.45	0.41
2:B:61:ARG:HH11	2:B:82:ASP:CG	2.27	0.41
2:B:125:LEU:C	2:B:127:SER:H	2.29	0.41
1:A:1:GLN:N	1:A:1:GLN:CD	2.78	0.41
2:B:93:ARG:HG2	3:C:58:GLN:CG	2.50	0.41
2:B:193:THR:HG22	2:B:208:SER:OG	2.20	0.41
1:A:5:GLN:HB2	1:A:23:LYS:HG2	2.03	0.41
1:A:53:PRO:O	1:A:74:LYS:NZ	2.49	0.41
2:B:17:GLU:HG2	2:B:18:ARG:H	1.86	0.41
1:A:127:TYR:HB3	2:B:121:SER:OG	2.21	0.41
1:A:150:TYR:CE1	1:A:180:TYR:HB2	2.55	0.41
1:A:132:GLY:O	1:A:135:ALA:HB3	2.21	0.40
2:B:192:TYR:HB2	2:B:209:PHE:CE2	2.56	0.40
2:B:11:LEU:HD23	2:B:19:VAL:CG2	2.51	0.40
2:B:8:PRO:HG2	2:B:11:LEU:HD13	2.03	0.40
2:B:31:THR:O	2:B:50:TYR:HA	2.20	0.40
2:B:175:MET:HG2	2:B:176:SER:H	1.87	0.40

There are no symmetry-related clashes.

## 5.3 Torsion angles [i](#)

### 5.3.1 Protein backbone [i](#)

In the following table, the Percentiles column shows the percent Ramachandran outliers of the chain as a percentile score with respect to all X-ray entries followed by that with respect to entries of similar resolution.

The Analysed column shows the number of residues for which the backbone conformation was analysed, and the total number of residues.

Mol	Chain	Analysed	Favoured	Allowed	Outliers	Percentiles	
1	A	217/219 (99%)	196 (90%)	18 (8%)	3 (1%)	9	17
2	B	210/212 (99%)	188 (90%)	16 (8%)	6 (3%)	3	5
3	C	101/103 (98%)	97 (96%)	4 (4%)	0	100	100

Continued on next page...

*Continued from previous page...*

Mol	Chain	Analysed	Favoured	Allowed	Outliers	Percentiles
All	All	528/534 (99%)	481 (91%)	38 (7%)	9 (2%)	7 13

All (9) Ramachandran outliers are listed below:

Mol	Chain	Res	Type
2	B	199	LYS
2	B	16	GLY
1	A	192	SER
2	B	51	ALA
2	B	77	SER
1	A	131	PRO
2	B	80	SER
1	A	2	VAL
2	B	84	ALA

### 5.3.2 Protein sidechains [i](#)

In the following table, the Percentiles column shows the percent sidechain outliers of the chain as a percentile score with respect to all X-ray entries followed by that with respect to entries of similar resolution.

The Analysed column shows the number of residues for which the sidechain conformation was analysed, and the total number of residues.

Mol	Chain	Analysed	Rotameric	Outliers	Percentiles
1	A	185/185 (100%)	173 (94%)	12 (6%)	15 32
2	B	190/190 (100%)	183 (96%)	7 (4%)	30 57
3	C	73/73 (100%)	70 (96%)	3 (4%)	27 53
All	All	448/448 (100%)	426 (95%)	22 (5%)	22 45

All (22) residues with a non-rotameric sidechain are listed below:

Mol	Chain	Res	Type
1	A	65	GLN
1	A	71	THR
1	A	120	LYS
1	A	126	VAL
1	A	136	GLN
1	A	138	ASN
1	A	148	LYS

*Continued on next page...*

*Continued from previous page...*

Mol	Chain	Res	Type
1	A	154	PRO
1	A	158	THR
1	A	185	SER
1	A	186	VAL
1	A	200	CYS
2	B	54	SER
2	B	76	ASN
2	B	90	GLN
2	B	104	LEU
2	B	175	MET
2	B	183	LYS
2	B	190	ASN
3	C	81	LEU
3	C	96	MET
3	C	107	THR

Sometimes sidechains can be flipped to improve hydrogen bonding and reduce clashes. All (16) such sidechains are listed below:

Mol	Chain	Res	Type
1	A	5	GLN
1	A	6	GLN
1	A	59	ASN
1	A	136	GLN
1	A	138	ASN
1	A	169	HIS
2	B	41	ASN
2	B	76	ASN
2	B	85	ASN
2	B	90	GLN
2	B	92	ASN
2	B	138	ASN
2	B	166	GLN
2	B	189	HIS
2	B	190	ASN
3	C	25	HIS

### 5.3.3 RNA [i](#)

There are no RNA molecules in this entry.

## 5.4 Non-standard residues in protein, DNA, RNA chains [i](#)

There are no non-standard protein/DNA/RNA residues in this entry.

## 5.5 Carbohydrates [i](#)

There are no oligosaccharides in this entry.

## 5.6 Ligand geometry [i](#)

Of 9 ligands modelled in this entry, 7 are monoatomic - leaving 2 for Mogul analysis.

In the following table, the Counts columns list the number of bonds (or angles) for which Mogul statistics could be retrieved, the number of bonds (or angles) that are observed in the model and the number of bonds (or angles) that are defined in the Chemical Component Dictionary. The Link column lists molecule types, if any, to which the group is linked. The Z score for a bond length (or angle) is the number of standard deviations the observed value is removed from the expected value. A bond length (or angle) with  $|Z| > 2$  is considered an outlier worth inspection. RMSZ is the root-mean-square of all Z scores of the bond lengths (or angles).

Mol	Type	Chain	Res	Link	Bond lengths			Bond angles		
					Counts	RMSZ	# $ Z  > 2$	Counts	RMSZ	# $ Z  > 2$
4	F09	A	1002	-	9,9,9	1.15	1 (11%)	8,8,8	0.70	0
6	DGA	C	1001	-	30,30,43	1.43	3 (10%)	32,32,45	1.20	3 (9%)

In the following table, the Chirals column lists the number of chiral outliers, the number of chiral centers analysed, the number of these observed in the model and the number defined in the Chemical Component Dictionary. Similar counts are reported in the Torsion and Rings columns. '-' means no outliers of that kind were identified.

Mol	Type	Chain	Res	Link	Chirals	Torsions	Rings
4	F09	A	1002	-	-	4/7/7/7	-
6	DGA	C	1001	-	-	14/32/32/45	-

All (4) bond length outliers are listed below:

Mol	Chain	Res	Type	Atoms	Z	Observed(Å)	Ideal(Å)
6	C	1001	DGA	OG1-CA1	4.81	1.47	1.33
6	C	1001	DGA	OG2-CB1	4.08	1.45	1.34
4	A	1002	F09	OXT-C9	-3.25	1.25	1.42
6	C	1001	DGA	CG3-CG2	2.55	1.57	1.51

All (3) bond angle outliers are listed below:

Mol	Chain	Res	Type	Atoms	Z	Observed(°)	Ideal(°)
6	C	1001	DGA	OG2-CB1-CB2	4.06	120.26	111.48
6	C	1001	DGA	CB6-CB5-CB4	2.61	127.58	114.37
6	C	1001	DGA	CB5-CB4-CB3	2.23	125.64	114.37

There are no chirality outliers.

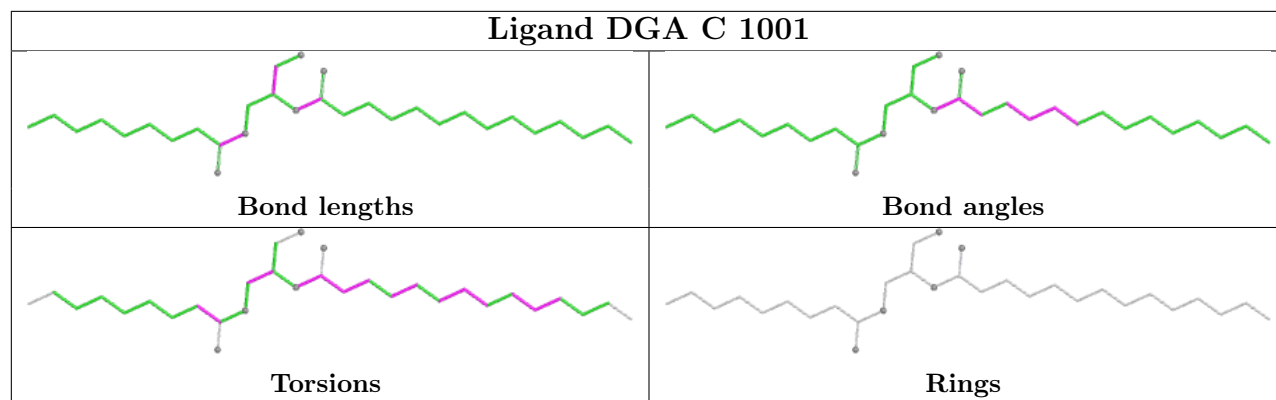
All (18) torsion outliers are listed below:

Mol	Chain	Res	Type	Atoms
6	C	1001	DGA	CB2-CB1-OG2-CG2
6	C	1001	DGA	OB1-CB1-OG2-CG2
6	C	1001	DGA	CB3-CB4-CB5-CB6
6	C	1001	DGA	CB1-CB2-CB3-CB4
6	C	1001	DGA	CB5-CB6-CB7-CB8
6	C	1001	DGA	CB9-CAB-CBB-CCB
6	C	1001	DGA	OG1-CG1-CG2-OG2
4	A	1002	F09	C7-C8-C9-OXT
4	A	1002	F09	C2-C3-C4-C5
6	C	1001	DGA	CB6-CB7-CB8-CB9
6	C	1001	DGA	CBB-CAB-CB9-CB8
6	C	1001	DGA	OG1-CG1-CG2-CG3
4	A	1002	F09	C1-C2-C3-C4
4	A	1002	F09	C3-C4-C5-C6
6	C	1001	DGA	OG2-CB1-CB2-CB3
6	C	1001	DGA	OG1-CA1-CA2-CA3
6	C	1001	DGA	OA1-CA1-CA2-CA3
6	C	1001	DGA	OB1-CB1-CB2-CB3

There are no ring outliers.

No monomer is involved in short contacts.

The following is a two-dimensional graphical depiction of Mogul quality analysis of bond lengths, bond angles, torsion angles, and ring geometry for all instances of the Ligand of Interest. In addition, ligands with molecular weight > 250 and outliers as shown on the validation Tables will also be included. For torsion angles, if less than 5% of the Mogul distribution of torsion angles is within 10 degrees of the torsion angle in question, then that torsion angle is considered an outlier. Any bond that is central to one or more torsion angles identified as an outlier by Mogul will be highlighted in the graph. For rings, the root-mean-square deviation (RMSD) between the ring in question and similar rings identified by Mogul is calculated over all ring torsion angles. If the average RMSD is greater than 60 degrees and the minimal RMSD between the ring in question and any Mogul-identified rings is also greater than 60 degrees, then that ring is considered an outlier. The outliers are highlighted in purple. The color gray indicates Mogul did not find sufficient equivalents in the CSD to analyse the geometry.



## 5.7 Other polymers [i](#)

There are no such residues in this entry.

## 5.8 Polymer linkage issues [i](#)

There are no chain breaks in this entry.

## 6 Fit of model and data

### 6.1 Protein, DNA and RNA chains

In the following table, the column labelled ‘#RSRZ > 2’ contains the number (and percentage) of RSRZ outliers, followed by percent RSRZ outliers for the chain as percentile scores relative to all X-ray entries and entries of similar resolution. The OWAB column contains the minimum, median, 95<sup>th</sup> percentile and maximum values of the occupancy-weighted average B-factor per residue. The column labelled ‘Q < 0.9’ lists the number of (and percentage) of residues with an average occupancy less than 0.9.

Mol	Chain	Analysed	<RSRZ>	#RSRZ>2	OWAB(Å <sup>2</sup> )	Q<0.9
1	A	219/219 (100%)	1.20	30 (13%) <b>6</b> <b>5</b>	56, 93, 113, 124	0
2	B	212/212 (100%)	0.94	30 (14%) <b>6</b> <b>5</b>	42, 86, 121, 129	0
3	C	103/103 (100%)	0.67	9 (8%) <b>16</b> <b>14</b>	43, 57, 90, 99	0
All	All	534/534 (100%)	1.00	69 (12%) <b>7</b> <b>6</b>	42, 86, 117, 129	0

All (69) RSRZ outliers are listed below:

Mol	Chain	Res	Type	RSRZ
1	A	215	ILE	3.7
2	B	76	ASN	3.7
1	A	117	SER	3.6
3	C	22	SER	3.6
1	A	1	GLN	3.6
3	C	124	ALA	3.6
1	A	28	THR	3.5
2	B	128	GLY	3.5
2	B	117	ILE	3.5
2	B	17	GLU	3.4
2	B	133	VAL	3.4
2	B	135	PHE	3.3
1	A	216	VAL	3.2
1	A	80	PHE	3.2
2	B	118	PHE	3.2
1	A	137	THR	3.1
1	A	136	GLN	2.9
1	A	149	GLY	2.9
1	A	183	SER	2.8
2	B	179	LEU	2.8
1	A	130	ALA	2.7
2	B	178	THR	2.7
1	A	206	ALA	2.7

*Continued on next page...*

*Continued from previous page...*

<b>Mol</b>	<b>Chain</b>	<b>Res</b>	<b>Type</b>	<b>RSRZ</b>
1	A	26	GLY	2.7
3	C	45	TYR	2.7
1	A	187	THR	2.7
1	A	11	LEU	2.6
2	B	109	ALA	2.5
1	A	169	HIS	2.5
2	B	45	ARG	2.5
2	B	186	TYR	2.5
2	B	55	ILE	2.5
2	B	58	ILE	2.5
1	A	72	ALA	2.5
2	B	145	ASN	2.5
2	B	209	PHE	2.4
3	C	47	ALA	2.4
3	C	75	THR	2.4
2	B	201	SER	2.4
1	A	42	GLY	2.4
2	B	41	ASN	2.4
2	B	91	SER	2.3
3	C	117	ARG	2.3
1	A	2	VAL	2.3
2	B	120	PRO	2.3
2	B	121	SER	2.3
2	B	148	TRP	2.3
2	B	206	VAL	2.3
1	A	179	LEU	2.2
1	A	196	GLU	2.2
1	A	131	PRO	2.2
1	A	173	ALA	2.2
1	A	55	TYR	2.2
1	A	211	VAL	2.2
2	B	180	THR	2.2
2	B	129	GLY	2.2
1	A	126	VAL	2.1
2	B	146	VAL	2.1
1	A	182	LEU	2.1
1	A	197	THR	2.1
2	B	197	THR	2.1
3	C	77	GLY	2.1
1	A	98	ARG	2.1
2	B	46	LEU	2.1
3	C	23	ALA	2.0

*Continued on next page...*

*Continued from previous page...*

Mol	Chain	Res	Type	RSRZ
1	A	219	ASP	2.0
2	B	134	CYS	2.0
2	B	194	CYS	2.0
3	C	34	VAL	2.0

## 6.2 Non-standard residues in protein, DNA, RNA chains [i](#)

There are no non-standard protein/DNA/RNA residues in this entry.

## 6.3 Carbohydrates [i](#)

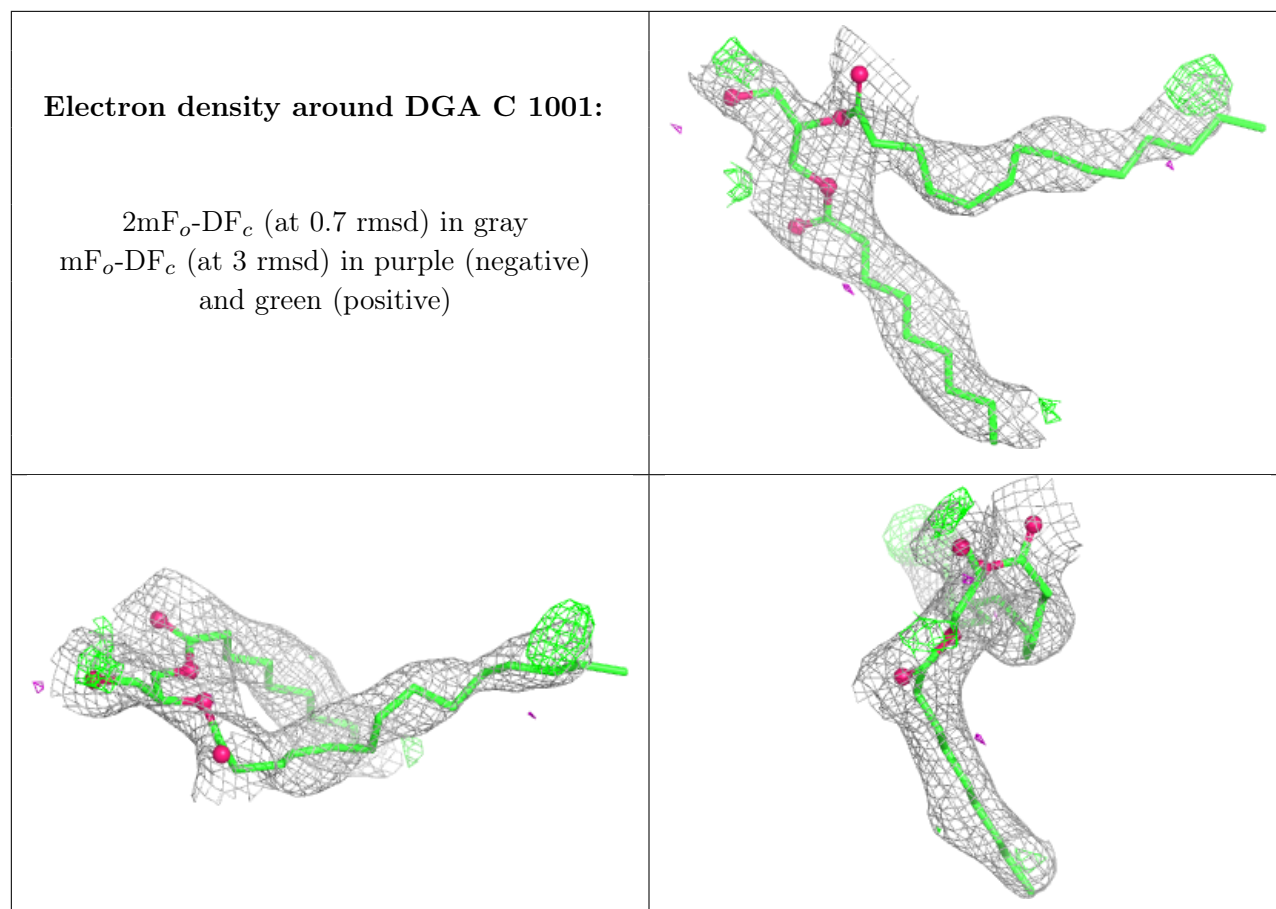
There are no oligosaccharides in this entry.

## 6.4 Ligands [i](#)

In the following table, the Atoms column lists the number of modelled atoms in the group and the number defined in the chemical component dictionary. The B-factors column lists the minimum, median, 95<sup>th</sup> percentile and maximum values of B factors of atoms in the group. The column labelled 'Q< 0.9' lists the number of atoms with occupancy less than 0.9.

Mol	Type	Chain	Res	Atoms	RSCC	RSR	B-factors(Å <sup>2</sup> )	Q<0.9
6	DGA	C	1001	31/44	0.75	0.20	90,109,121,125	0
5	K	C	5003	1/1	0.81	0.10	58,58,58,58	1
4	F09	A	1002	10/10	0.84	0.19	90,96,103,103	0
5	K	C	5006	1/1	0.86	0.07	123,123,123,123	1
5	K	C	5007	1/1	0.91	0.16	147,147,147,147	1
5	K	C	5004	1/1	0.93	0.21	59,59,59,59	1
5	K	C	5002	1/1	0.94	0.14	59,59,59,59	1
5	K	C	5001	1/1	0.97	0.19	68,68,68,68	1
5	K	C	5005	1/1	0.98	0.40	98,98,98,98	1

The following is a graphical depiction of the model fit to experimental electron density of all instances of the Ligand of Interest. In addition, ligands with molecular weight > 250 and outliers as shown on the geometry validation Tables will also be included. Each fit is shown from different orientation to approximate a three-dimensional view.



## 6.5 Other polymers [i](#)

There are no such residues in this entry.