



Full wwPDB X-ray Structure Validation Report ⓘ

Apr 5, 2026 – 02:16 AM JST

PDB ID : 22FE / pdb_000022fe
Title : Crystal structure of thioredoxin glutathione reductase from *Schistosoma japonicum* with the U597C mutation in complex with GSH
Authors : Wang, S.Q.; Huang, S.Q.; Lin, T.W.
Deposited on : 2026-01-08
Resolution : 2.12 Å (reported)

This is a Full wwPDB X-ray Structure Validation Report for a publicly released PDB entry.

We welcome your comments at validation@mail.wwpdb.org

A user guide is available at

<https://www.wwpdb.org/validation/2017/XrayValidationReportHelp>

with specific help available everywhere you see the ⓘ symbol.

The types of validation reports are described at

<http://www.wwpdb.org/validation/2017/FAQs#types>.

The following versions of software and data (see [references ⓘ](#)) were used in the production of this report:

MolProbity : 4-5-2 with Phenix2.0
Mogul : 1.8.5 (274361), CSD as541be (2020)
Xtrriage (Phenix) : 2.0
EDS : 3.0
buster-report : 1.1.7 (2018)
Percentile statistics : 20231227.v01 (using entries in the PDB archive December 27th 2023)
CCP4 : 9.0.010 (Gargrove)
Density-Fitness : 1.0.12
Ideal geometry (proteins) : Engh & Huber (2001)
Ideal geometry (DNA, RNA) : Parkinson et al. (1996)
Validation Pipeline (wwPDB-VP) : 2.48.1

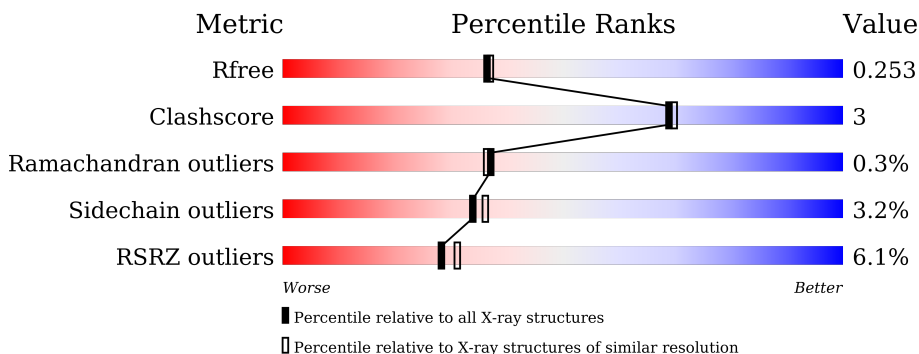
1 Overall quality at a glance

The following experimental techniques were used to determine the structure:

X-RAY DIFFRACTION

The reported resolution of this entry is 2.12 Å.

Percentile scores (ranging between 0-100) for global validation metrics of the entry are shown in the following graphic. The table shows the number of entries on which the scores are based.



Metric	Whole archive (#Entries)	Similar resolution (#Entries, resolution range(Å))
R_{free}	164625	7689 (2.14-2.10)
Clashscore	180529	8431 (2.14-2.10)
Ramachandran outliers	177936	8366 (2.14-2.10)
Sidechain outliers	177891	8367 (2.14-2.10)
RSRZ outliers	164620	7689 (2.14-2.10)

The table below summarises the geometric issues observed across the polymeric chains and their fit to the electron density. The red, orange, yellow and green segments of the lower bar indicate the fraction of residues that contain outliers for ≥ 3 , 2, 1 and 0 types of geometric quality criteria respectively. A grey segment represents the fraction of residues that are not modelled. The numeric value for each fraction is indicated below the corresponding segment, with a dot representing fractions $\leq 5\%$. The upper red bar (where present) indicates the fraction of residues that have poor fit to the electron density. The numeric value is given above the bar.

Mol	Chain	Length	Quality of chain
1	A	598	 12% 88% 10% ..
1	B	598	 12% 89% 8% ..

2 Entry composition [i](#)

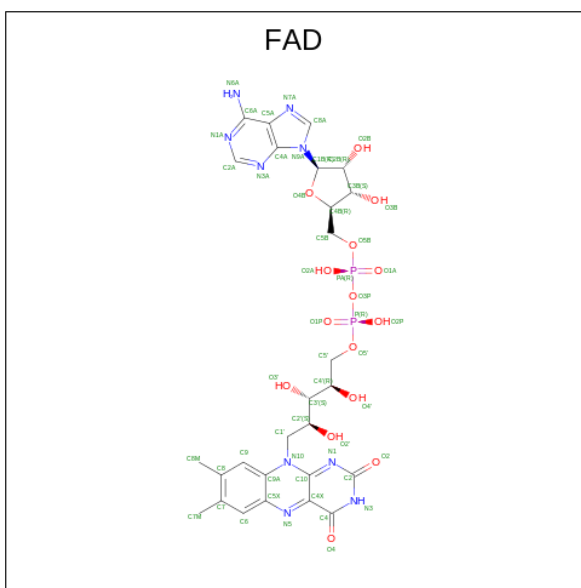
There are 6 unique types of molecules in this entry. The entry contains 9337 atoms, of which 0 are hydrogens and 0 are deuteriums.

In the tables below, the ZeroOcc column contains the number of atoms modelled with zero occupancy, the AltConf column contains the number of residues with at least one atom in alternate conformation and the Trace column contains the number of residues modelled with at most 2 atoms.

- Molecule 1 is a protein called thioredoxin-disulfide reductase (NADPH).

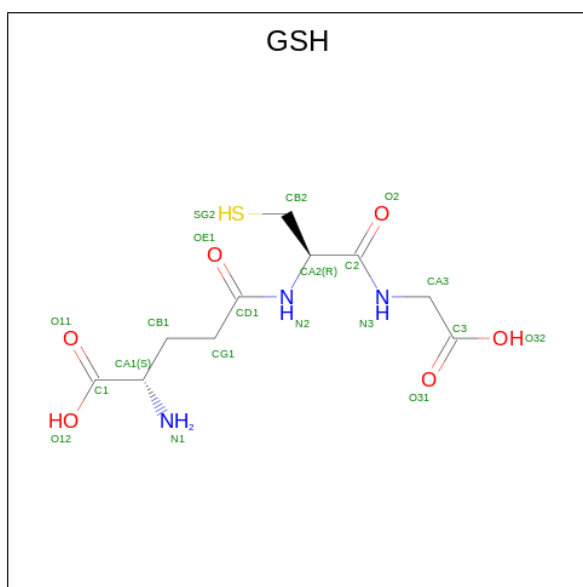
Mol	Chain	Residues	Atoms					ZeroOcc	AltConf	Trace
			Total	C	N	O	S			
1	A	591	Total 4536	C 2868	N 773	O 871	S 24	0	2	0
1	B	592	Total 4534	C 2867	N 770	O 872	S 25	0	1	0

- Molecule 2 is FLAVIN-ADENINE DINUCLEOTIDE (CCD ID: FAD) (formula: $C_{27}H_{33}N_9O_{15}P_2$) (labeled as "Ligand of Interest" by depositor).



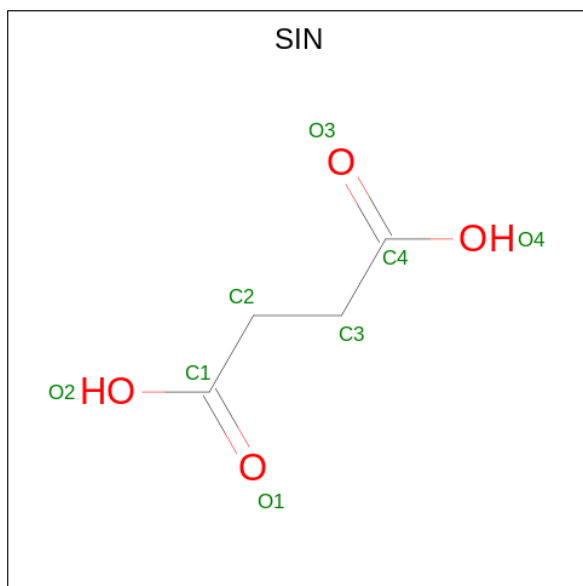
Mol	Chain	Residues	Atoms					ZeroOcc	AltConf
			Total	C	N	O	P		
2	A	1	Total 53	C 27	N 9	O 15	P 2	0	0
2	B	1	Total 53	C 27	N 9	O 15	P 2	0	0

- Molecule 3 is Glutathione (CCD ID: GSH) (formula: $C_{10}H_{17}N_3O_6S$).



Mol	Chain	Residues	Atoms					ZeroOcc	AltConf
			Total	C	N	O	S		
3	A	1	20	10	3	6	1	0	0

- Molecule 4 is SUCCINIC ACID (CCD ID: SIN) (formula: $C_4H_6O_4$) (labeled as "Ligand of Interest" by depositor).



Mol	Chain	Residues	Atoms			ZeroOcc	AltConf
			Total	C	O		
4	A	1	8	4	4	0	0

- Molecule 5 is SODIUM ION (CCD ID: NA) (formula: Na).

Mol	Chain	Residues	Atoms	ZeroOcc	AltConf
5	A	1	Total Na 1 1	0	0

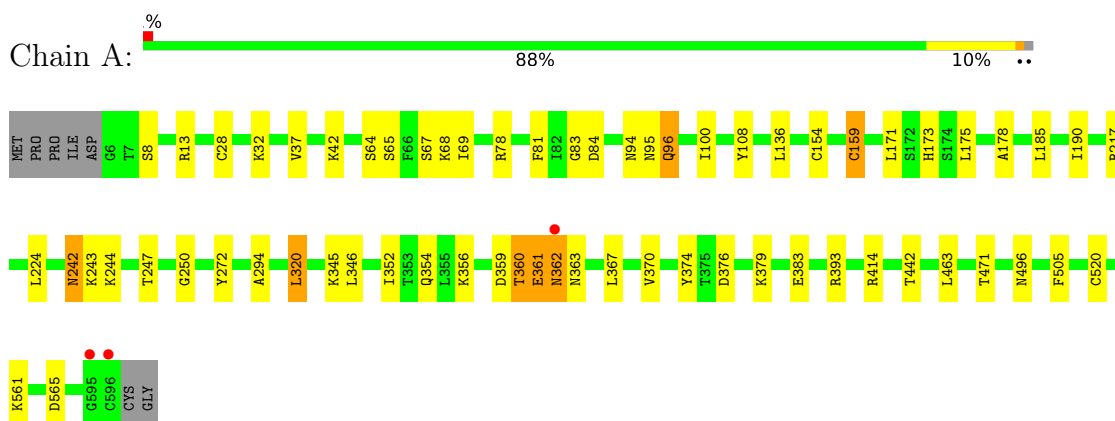
- Molecule 6 is water.

Mol	Chain	Residues	Atoms	ZeroOcc	AltConf
6	A	87	Total O 87 87	0	0
6	B	45	Total O 45 45	0	0

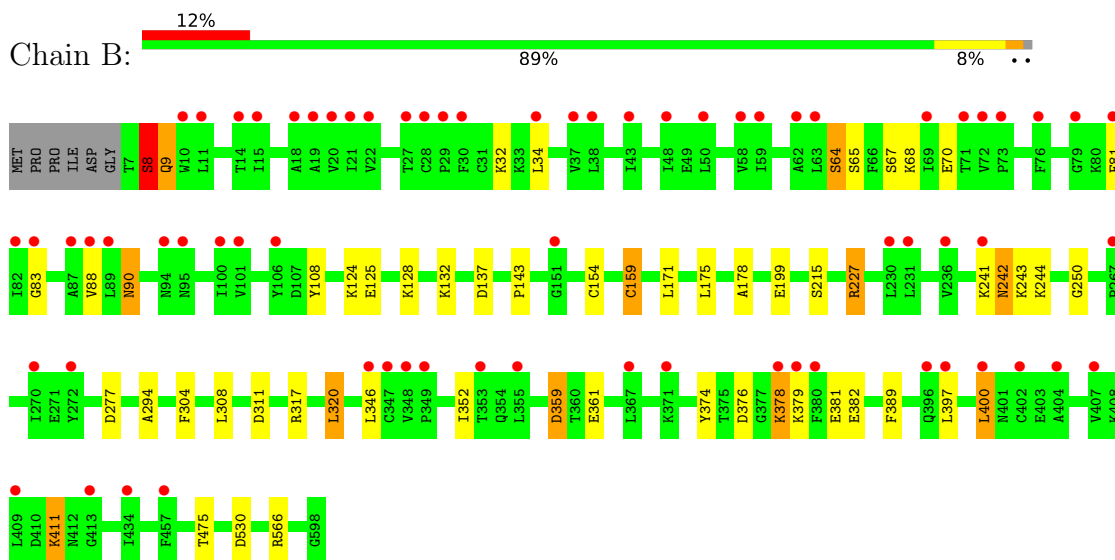
3 Residue-property plots i

These plots are drawn for all protein, RNA, DNA and oligosaccharide chains in the entry. The first graphic for a chain summarises the proportions of the various outlier classes displayed in the second graphic. The second graphic shows the sequence view annotated by issues in geometry and electron density. Residues are color-coded according to the number of geometric quality criteria for which they contain at least one outlier: green = 0, yellow = 1, orange = 2 and red = 3 or more. A red dot above a residue indicates a poor fit to the electron density ($RSRZ > 2$). Stretches of 2 or more consecutive residues without any outlier are shown as a green connector. Residues present in the sample, but not in the model, are shown in grey.

- Molecule 1: thioredoxin-disulfide reductase (NADPH)



- Molecule 1: thioredoxin-disulfide reductase (NADPH)



4 Data and refinement statistics

Property	Value	Source
Space group	P 21 21 21	Depositor
Cell constants a, b, c, α , β , γ	84.56Å 87.58Å 185.60Å 90.00° 90.00° 90.00°	Depositor
Resolution (Å)	50.93 – 2.12 50.93 – 2.12	Depositor EDS
% Data completeness (in resolution range)	100.0 (50.93-2.12) 100.0 (50.93-2.12)	Depositor EDS
R_{merge}	(Not available)	Depositor
R_{sym}	(Not available)	Depositor
$\langle I/\sigma(I) \rangle$ ¹	1.80 (at 2.12Å)	Xtrriage
Refinement program	REFMAC 5.8.0425	Depositor
R, R_{free}	0.209 , 0.248 0.217 , 0.253	Depositor DCC
R_{free} test set	3952 reflections (5.00%)	wwPDB-VP
Wilson B-factor (Å ²)	44.9	Xtrriage
Anisotropy	0.228	Xtrriage
Bulk solvent k_{sol} (e/Å ³), B_{sol} (Å ²)	0.35 , 38.7	EDS
L-test for twinning ²	$\langle L \rangle = 0.51$, $\langle L^2 \rangle = 0.34$	Xtrriage
Estimated twinning fraction	0.009 for k,h,-l	Xtrriage
F_o, F_c correlation	0.96	EDS
Total number of atoms	9337	wwPDB-VP
Average B, all atoms (Å ²)	56.0	wwPDB-VP

Xtrriage's analysis on translational NCS is as follows: *The largest off-origin peak in the Patterson function is 3.49% of the height of the origin peak. No significant pseudotranslation is detected.*

¹Intensities estimated from amplitudes.

²Theoretical values of $\langle |L| \rangle$, $\langle L^2 \rangle$ for acentric reflections are 0.5, 0.333 respectively for untwinned datasets, and 0.375, 0.2 for perfectly twinned datasets.

5 Model quality [i](#)

5.1 Standard geometry [i](#)

Bond lengths and bond angles in the following residue types are not validated in this section: GSH, NA, FAD, SIN

The Z score for a bond length (or angle) is the number of standard deviations the observed value is removed from the expected value. A bond length (or angle) with $|Z| > 5$ is considered an outlier worth inspection. RMSZ is the root-mean-square of all Z scores of the bond lengths (or angles).

Mol	Chain	Bond lengths		Bond angles	
		RMSZ	# Z >5	RMSZ	# Z >5
1	A	0.71	0/4624	1.18	12/6261 (0.2%)
1	B	0.66	0/4622	1.13	9/6259 (0.1%)
All	All	0.69	0/9246	1.15	21/12520 (0.2%)

Chiral center outliers are detected by calculating the chiral volume of a chiral center and verifying if the center is modelled as a planar moiety or with the opposite hand. A planarity outlier is detected by checking planarity of atoms in a peptide group, atoms in a mainchain group or atoms of a sidechain that are expected to be planar.

Mol	Chain	#Chirality outliers	#Planarity outliers
1	A	0	2
1	B	0	3
All	All	0	5

There are no bond length outliers.

All (21) bond angle outliers are listed below:

Mol	Chain	Res	Type	Atoms	Z	Observed(°)	Ideal(°)
1	A	471	THR	CA-CB-OG1	-7.66	98.11	109.60
1	A	471	THR	OG1-CB-CG2	7.11	123.52	109.30
1	A	95	ASN	CB-CA-C	-6.64	102.11	111.80
1	A	360	THR	CA-CB-OG1	6.23	118.94	109.60
1	B	90	ASN	CB-CA-C	6.20	120.51	110.96
1	A	361	GLU	CB-CA-C	6.04	122.45	110.42
1	A	393	ARG	CD-NE-CZ	5.99	132.79	124.40
1	B	311	ASP	CB-CA-C	5.91	120.55	110.81
1	B	378	LYS	CB-CA-C	5.87	121.80	109.65
1	B	376	ASP	CA-CB-CG	5.84	118.44	112.60
1	A	363	ASN	CA-CB-CG	-5.61	107.00	112.60
1	A	496	ASN	CA-CB-CG	-5.58	107.02	112.60

Continued on next page...

Continued from previous page...

Mol	Chain	Res	Type	Atoms	Z	Observed(°)	Ideal(°)
1	B	199	GLU	CB-CG-CD	5.56	122.05	112.60
1	B	359	ASP	CA-CB-CG	5.52	118.12	112.60
1	B	277	ASP	CA-CB-CG	5.47	118.07	112.60
1	A	360	THR	N-CA-CB	5.42	119.87	110.39
1	B	530	ASP	CA-CB-CG	5.27	117.87	112.60
1	B	132	LYS	CB-CA-C	5.23	118.86	110.29
1	A	376	ASP	CA-CB-CG	5.11	117.71	112.60
1	A	356	LYS	CB-CA-C	-5.08	101.57	109.20
1	A	414	ARG	CG-CD-NE	-5.05	100.90	112.00

There are no chirality outliers.

All (5) planarity outliers are listed below:

Mol	Chain	Res	Type	Group
1	A	217	ARG	Sidechain
1	A	78	ARG	Sidechain
1	B	227	ARG	Sidechain
1	B	317	ARG	Sidechain
1	B	566	ARG	Sidechain

5.2 Too-close contacts

In the following table, the Non-H and H(model) columns list the number of non-hydrogen atoms and hydrogen atoms in the chain respectively. The H(added) column lists the number of hydrogen atoms added and optimized by MolProbity. The Clashes column lists the number of clashes within the asymmetric unit, whereas Symm-Clashes lists symmetry-related clashes.

Mol	Chain	Non-H	H(model)	H(added)	Clashes	Symm-Clashes
1	A	4536	0	4521	34	0
1	B	4534	0	4514	33	0
2	A	53	0	31	0	0
2	B	53	0	31	3	0
3	A	20	0	15	3	0
4	A	8	0	4	0	0
5	A	1	0	0	0	0
6	A	87	0	0	0	0
6	B	45	0	0	0	0
All	All	9337	0	9116	61	0

The all-atom clashscore is defined as the number of clashes found per 1000 atoms (including hydrogen atoms). The all-atom clashscore for this structure is 3.

All (61) close contacts within the same asymmetric unit are listed below, sorted by their clash magnitude.

Atom-1	Atom-2	Interatomic distance (Å)	Clash overlap (Å)
1:A:28:CYS:SG	3:A:602:GSH:SG2	2.67	0.75
1:B:352:ILE:HD11	1:B:389:PHE:HZ	1.54	0.73
1:A:175:LEU:HD23	1:B:175:LEU:HD23	1.71	0.72
1:B:137:ASP:HA	2:B:601:FAD:H8A	1.73	0.70
1:B:359:ASP:OD1	1:B:361:GLU:HB3	1.93	0.69
1:B:242:ASN:HD21	1:B:244:LYS:HG3	1.61	0.66
1:A:242:ASN:HD21	1:A:244:LYS:HG3	1.60	0.65
1:B:242:ASN:ND2	1:B:244:LYS:HG3	2.14	0.62
1:B:352:ILE:HD11	1:B:389:PHE:CZ	2.33	0.60
1:A:175:LEU:CD2	1:B:175:LEU:HD23	2.30	0.60
1:B:241:LYS:HA	1:B:241:LYS:HE2	1.83	0.60
1:B:67:SER:O	1:B:68:LYS:HB2	2.03	0.57
1:B:381:GLU:O	1:B:382[B]:GLU:HG2	2.05	0.57
1:A:67:SER:O	1:A:68:LYS:HB2	2.05	0.55
1:A:242:ASN:ND2	1:A:244:LYS:HG3	2.20	0.54
1:A:294:ALA:HB1	1:A:320:LEU:HD12	1.89	0.53
1:A:362:ASN:OD1	1:A:362:ASN:N	2.41	0.53
1:B:108:TYR:O	1:B:250:GLY:HA2	2.09	0.53
1:A:242:ASN:C	1:A:242:ASN:HD22	2.16	0.52
1:A:42:LYS:N	1:A:42:LYS:HD2	2.24	0.52
1:A:185:LEU:HD12	1:A:190:ILE:CD1	2.38	0.52
1:B:242:ASN:C	1:B:242:ASN:HD22	2.18	0.52
1:A:561:LYS:NZ	1:A:565:ASP:OD1	2.44	0.50
1:B:294:ALA:HB1	1:B:320:LEU:HD12	1.92	0.50
1:B:81:PHE:CZ	1:B:83:GLY:HA2	2.46	0.50
1:B:411:LYS:HD3	1:B:411:LYS:C	2.37	0.49
1:A:154:CYS:SG	1:A:159:CYS:CB	3.00	0.49
1:A:13:ARG:HG2	1:A:13:ARG:HH21	1.79	0.48
1:B:154:CYS:SG	1:B:159:CYS:CB	3.01	0.48
1:B:64:SER:OG	1:B:70:GLU:CG	2.63	0.46
1:B:227:ARG:HG3	2:B:601:FAD:N6A	2.31	0.46
1:B:137:ASP:OD1	2:B:601:FAD:H1B	2.15	0.46
1:A:175:LEU:HD23	1:B:175:LEU:CD2	2.43	0.45
1:B:125:GLU:O	1:B:128:LYS:HB2	2.15	0.45
1:B:346:LEU:O	1:B:374:TYR:HA	2.16	0.45
1:A:84:ASP:HB2	3:A:602:GSH:O11	2.17	0.45
1:A:346:LEU:O	1:A:374:TYR:HA	2.17	0.45
1:A:94:ASN:HB3	1:A:96:GLN:OE1	2.17	0.44
1:A:175:LEU:CD2	1:B:175:LEU:CD2	2.95	0.44
1:A:352:ILE:HD12	1:A:370:VAL:HG22	1.99	0.44

Continued on next page...

Continued from previous page...

Atom-1	Atom-2	Interatomic distance (Å)	Clash overlap (Å)
1:A:28:CYS:HG	3:A:602:GSH:CB2	2.30	0.44
1:A:81:PHE:CZ	1:A:83:GLY:HA2	2.53	0.43
1:A:359:ASP:OD1	1:A:361:GLU:HG2	2.17	0.43
1:B:397:LEU:HD22	1:B:400:LEU:HD22	1.99	0.43
1:A:64:SER:HB3	1:A:69:ILE:O	2.19	0.43
1:A:367:LEU:HD11	1:A:383:GLU:HG3	2.01	0.43
1:B:64:SER:OG	1:B:70:GLU:HG2	2.18	0.43
1:A:505:PHE:CZ	1:A:520:CYS:HB3	2.55	0.42
1:A:108:TYR:O	1:A:250:GLY:HA2	2.19	0.42
1:A:272:TYR:CE1	1:A:354:GLN:HB2	2.55	0.42
1:B:304:PHE:O	1:B:308:LEU:HG	2.20	0.42
1:A:178:ALA:HA	1:B:171:LEU:HD13	2.02	0.41
1:B:34:LEU:HD11	1:B:88:VAL:HG11	2.01	0.41
1:A:171:LEU:HD13	1:B:178:ALA:HA	2.02	0.41
1:B:9:GLN:CD	1:B:9:GLN:H	2.26	0.41
1:A:242:ASN:ND2	1:A:244:LYS:CG	2.83	0.41
1:B:8:SER:HB3	1:B:9:GLN:H	1.75	0.41
1:A:96:GLN:O	1:A:100:ILE:HG13	2.21	0.40
1:B:124:LYS:HD3	1:B:215:SER:OG	2.21	0.40
1:A:13:ARG:HG2	1:A:13:ARG:NH2	2.37	0.40
1:A:136:LEU:CD2	1:A:224:LEU:HD12	2.51	0.40

There are no symmetry-related clashes.

5.3 Torsion angles [i](#)

5.3.1 Protein backbone [i](#)

In the following table, the Percentiles column shows the percent Ramachandran outliers of the chain as a percentile score with respect to all X-ray entries followed by that with respect to entries of similar resolution.

The Analysed column shows the number of residues for which the backbone conformation was analysed, and the total number of residues.

Mol	Chain	Analysed	Favoured	Allowed	Outliers	Percentiles
1	A	591/598 (99%)	572 (97%)	18 (3%)	1 (0%)	44 44
1	B	591/598 (99%)	568 (96%)	21 (4%)	2 (0%)	37 36
All	All	1182/1196 (99%)	1140 (96%)	39 (3%)	3 (0%)	37 36

All (3) Ramachandran outliers are listed below:

Mol	Chain	Res	Type
1	B	8	SER
1	A	243	LYS
1	B	243	LYS

5.3.2 Protein sidechains [i](#)

In the following table, the Percentiles column shows the percent sidechain outliers of the chain as a percentile score with respect to all X-ray entries followed by that with respect to entries of similar resolution.

The Analysed column shows the number of residues for which the sidechain conformation was analysed, and the total number of residues.

Mol	Chain	Analysed	Rotameric	Outliers	Percentiles	
1	A	492/496 (99%)	476 (97%)	16 (3%)	33	35
1	B	492/496 (99%)	477 (97%)	15 (3%)	36	38
All	All	984/992 (99%)	953 (97%)	31 (3%)	34	36

All (31) residues with a non-rotameric sidechain are listed below:

Mol	Chain	Res	Type
1	A	8	SER
1	A	32	LYS
1	A	37	VAL
1	A	65	SER
1	A	96	GLN
1	A	159	CYS
1	A	173	HIS
1	A	242	ASN
1	A	247	THR
1	A	320	LEU
1	A	345	LYS
1	A	360	THR
1	A	362	ASN
1	A	379	LYS
1	A	442	THR
1	A	463	LEU
1	B	8	SER
1	B	9	GLN
1	B	32	LYS
1	B	64	SER

Continued on next page...

Continued from previous page...

Mol	Chain	Res	Type
1	B	65	SER
1	B	90	ASN
1	B	143	PRO
1	B	159	CYS
1	B	242	ASN
1	B	320	LEU
1	B	378	LYS
1	B	379	LYS
1	B	400	LEU
1	B	411	LYS
1	B	475	THR

Sometimes sidechains can be flipped to improve hydrogen bonding and reduce clashes. All (21) such sidechains are listed below:

Mol	Chain	Res	Type
1	A	93	ASN
1	A	156	ASN
1	A	204	HIS
1	A	209	ASN
1	A	225	ASN
1	A	237	GLN
1	A	242	ASN
1	A	354	GLN
1	A	447	HIS
1	B	9	GLN
1	B	92	HIS
1	B	93	ASN
1	B	156	ASN
1	B	180	HIS
1	B	204	HIS
1	B	209	ASN
1	B	225	ASN
1	B	242	ASN
1	B	354	GLN
1	B	447	HIS
1	B	496	ASN

5.3.3 RNA

There are no RNA molecules in this entry.

5.4 Non-standard residues in protein, DNA, RNA chains [i](#)

There are no non-standard protein/DNA/RNA residues in this entry.

5.5 Carbohydrates [i](#)

There are no oligosaccharides in this entry.

5.6 Ligand geometry [i](#)

Of 5 ligands modelled in this entry, 1 is monoatomic - leaving 4 for Mogul analysis.

In the following table, the Counts columns list the number of bonds (or angles) for which Mogul statistics could be retrieved, the number of bonds (or angles) that are observed in the model and the number of bonds (or angles) that are defined in the Chemical Component Dictionary. The Link column lists molecule types, if any, to which the group is linked. The Z score for a bond length (or angle) is the number of standard deviations the observed value is removed from the expected value. A bond length (or angle) with $|Z| > 2$ is considered an outlier worth inspection. RMSZ is the root-mean-square of all Z scores of the bond lengths (or angles).

Mol	Type	Chain	Res	Link	Bond lengths			Bond angles		
					Counts	RMSZ	# Z > 2	Counts	RMSZ	# Z > 2
4	SIN	A	603	-	7,7,7	1.44	1 (14%)	8,8,8	2.15	3 (37%)
2	FAD	A	601	-	53,58,58	0.68	0	68,89,89	0.80	0
2	FAD	B	601	-	53,58,58	0.68	0	68,89,89	1.12	4 (5%)
3	GSH	A	602	-	18,19,19	0.72	0	23,24,24	1.17	2 (8%)

In the following table, the Chirals column lists the number of chiral outliers, the number of chiral centers analysed, the number of these observed in the model and the number defined in the Chemical Component Dictionary. Similar counts are reported in the Torsion and Rings columns. '2' means no outliers of that kind were identified.

Mol	Type	Chain	Res	Link	Chirals	Torsions	Rings
4	SIN	A	603	-	-	3/5/5/5	-
2	FAD	A	601	-	-	3/30/50/50	0/6/6/6
2	FAD	B	601	-	-	6/30/50/50	0/6/6/6
3	GSH	A	602	-	-	2/24/24/24	-

All (1) bond length outliers are listed below:

Mol	Chain	Res	Type	Atoms	Z	Observed(Å)	Ideal(Å)
4	A	603	SIN	O3-C4	2.25	1.29	1.22

All (9) bond angle outliers are listed below:

Mol	Chain	Res	Type	Atoms	Z	Observed(°)	Ideal(°)
4	A	603	SIN	C2-C3-C4	4.39	123.05	113.60
2	B	601	FAD	O4B-C1B-C2B	-4.32	100.62	106.93
3	A	602	GSH	O32-C3-CA3	3.33	124.29	112.74
3	A	602	GSH	O31-C3-CA3	-3.04	110.42	122.68
2	B	601	FAD	C1B-N9A-C4A	2.82	131.59	126.64
4	A	603	SIN	C3-C2-C1	2.46	118.90	113.60
4	A	603	SIN	O2-C1-C2	2.36	121.60	114.03
2	B	601	FAD	C4A-C5A-N7A	2.28	111.77	109.40
2	B	601	FAD	C3B-C2B-C1B	-2.12	97.78	100.98

There are no chirality outliers.

All (14) torsion outliers are listed below:

Mol	Chain	Res	Type	Atoms
2	B	601	FAD	C5B-O5B-PA-O1A
2	B	601	FAD	C5B-O5B-PA-O2A
2	B	601	FAD	C5B-O5B-PA-O3P
4	A	603	SIN	C1-C2-C3-C4
2	B	601	FAD	PA-O3P-P-O1P
2	A	601	FAD	PA-O3P-P-O5'
2	B	601	FAD	PA-O3P-P-O5'
2	A	601	FAD	P-O3P-PA-O1A
2	B	601	FAD	O4B-C4B-C5B-O5B
3	A	602	GSH	O32-C3-CA3-N3
3	A	602	GSH	CA1-CB1-CG1-CD1
2	A	601	FAD	O4B-C4B-C5B-O5B
4	A	603	SIN	O2-C1-C2-C3
4	A	603	SIN	O1-C1-C2-C3

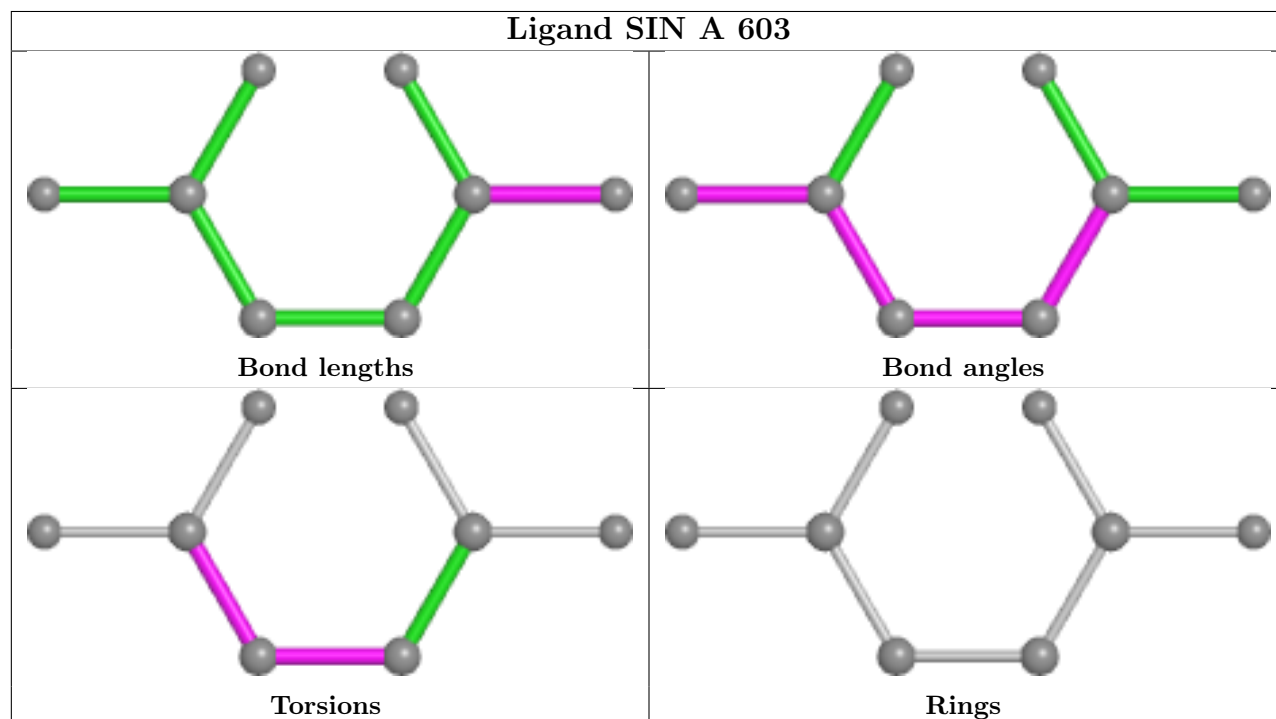
There are no ring outliers.

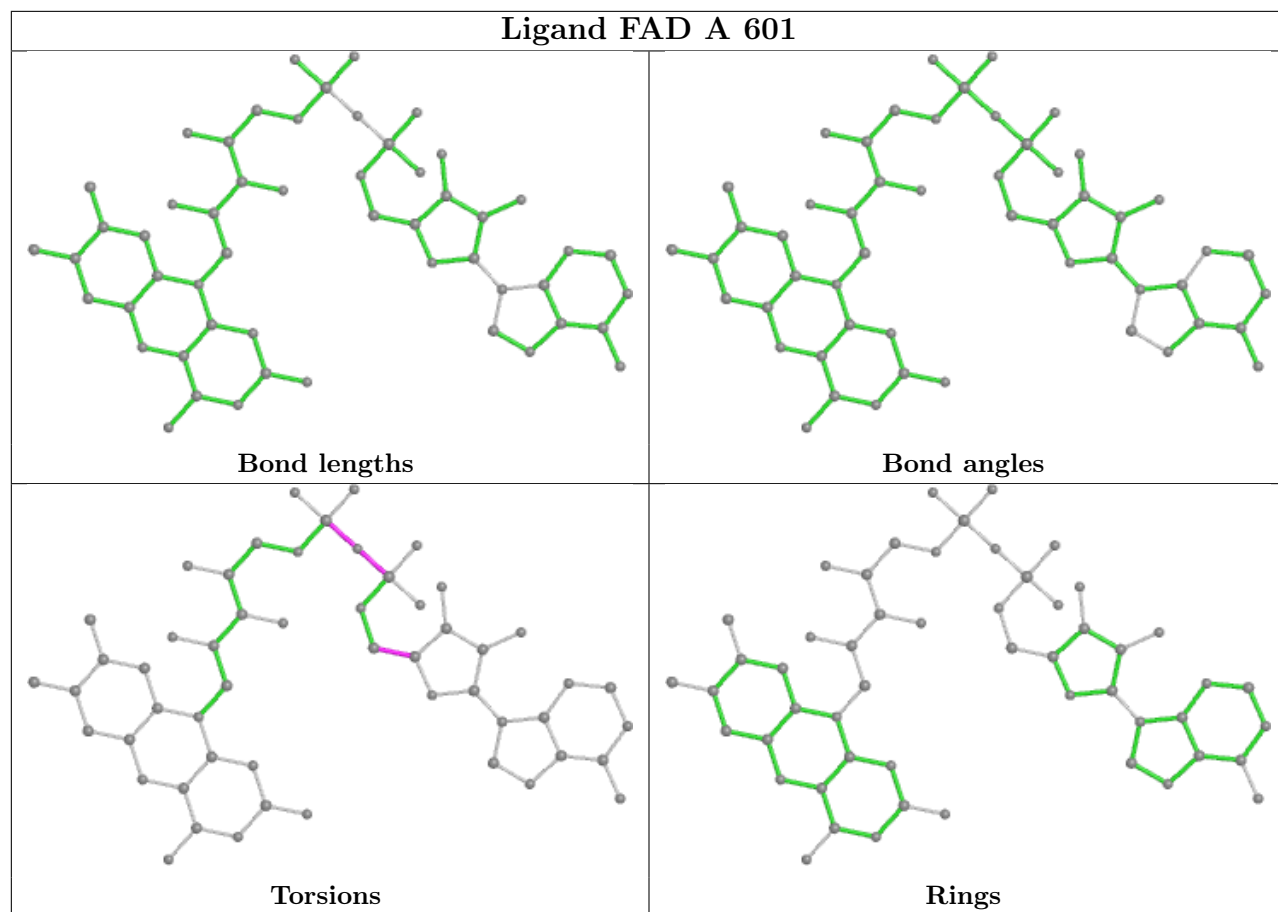
2 monomers are involved in 6 short contacts:

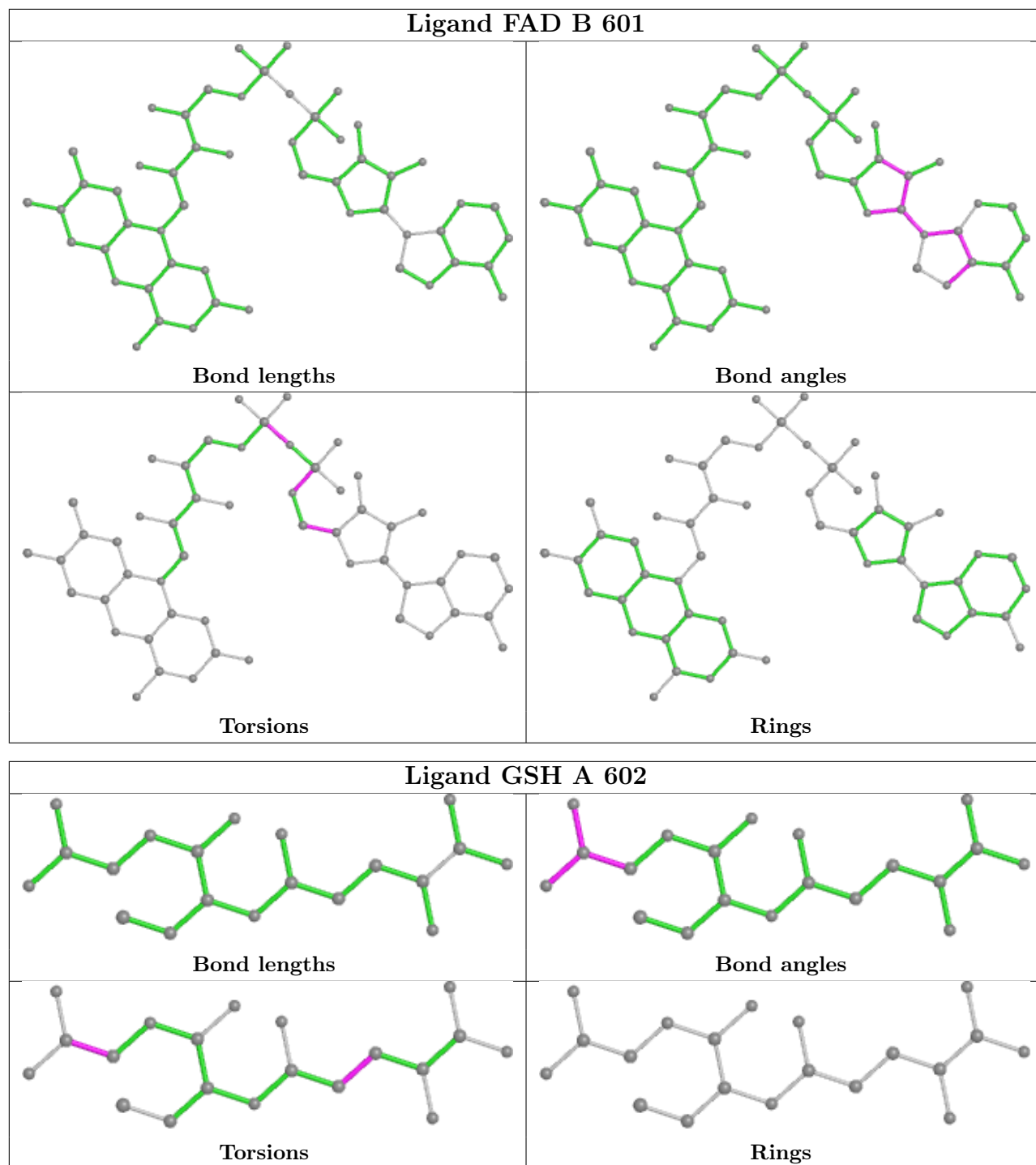
Mol	Chain	Res	Type	Clashes	Symm-Clashes
2	B	601	FAD	3	0
3	A	602	GSH	3	0

The following is a two-dimensional graphical depiction of Mogul quality analysis of bond lengths, bond angles, torsion angles, and ring geometry for all instances of the Ligand of Interest. In addition, ligands with molecular weight > 250 and outliers as shown on the validation Tables will also be included. For torsion angles, if less than 5% of the Mogul distribution of torsion angles is within 10 degrees of the torsion angle in question, then that torsion angle is considered an outlier.

Any bond that is central to one or more torsion angles identified as an outlier by Mogul will be highlighted in the graph. For rings, the root-mean-square deviation (RMSD) between the ring in question and similar rings identified by Mogul is calculated over all ring torsion angles. If the average RMSD is greater than 60 degrees and the minimal RMSD between the ring in question and any Mogul-identified rings is also greater than 60 degrees, then that ring is considered an outlier. The outliers are highlighted in purple. The color gray indicates Mogul did not find sufficient equivalents in the CSD to analyse the geometry.







5.7 Other polymers [\(i\)](#)

There are no such residues in this entry.

5.8 Polymer linkage issues [\(i\)](#)

There are no chain breaks in this entry.

6 Fit of model and data

6.1 Protein, DNA and RNA chains

In the following table, the column labelled ‘#RSRZ > 2’ contains the number (and percentage) of RSRZ outliers, followed by percent RSRZ outliers for the chain as percentile scores relative to all X-ray entries and entries of similar resolution. The OWAB column contains the minimum, median, 95th percentile and maximum values of the occupancy-weighted average B-factor per residue. The column labelled ‘Q < 0.9’ lists the number of (and percentage) of residues with an average occupancy less than 0.9.

Mol	Chain	Analysed	<RSRZ>	#RSRZ>2	OWAB(Å ²)	Q<0.9
1	A	591/598 (98%)	0.04	3 (0%) 87 88	19, 46, 74, 111	2 (0%)
1	B	592/598 (98%)	0.79	69 (11%) 10 12	31, 59, 102, 131	1 (0%)
All	All	1183/1196 (98%)	0.42	72 (6%) 28 31	19, 52, 93, 131	3 (0%)

All (72) RSRZ outliers are listed below:

Mol	Chain	Res	Type	RSRZ
1	B	29	PRO	4.8
1	B	10	TRP	4.4
1	B	59	ILE	4.4
1	B	37	VAL	4.2
1	B	30	PHE	4.1
1	B	15	ILE	4.0
1	B	76	PHE	3.9
1	B	72	VAL	3.8
1	B	11	LEU	3.7
1	B	27	THR	3.6
1	B	50	LEU	3.6
1	B	83	GLY	3.5
1	B	63	LEU	3.4
1	B	434	ILE	3.3
1	B	18	ALA	3.2
1	B	88	VAL	3.2
1	B	62	ALA	3.2
1	B	81	PHE	3.1
1	B	409	LEU	3.1
1	B	95	ASN	3.1
1	B	38	LEU	3.0
1	B	34	LEU	3.0
1	B	14	THR	2.9
1	B	400	LEU	2.9

Continued on next page...

Continued from previous page...

Mol	Chain	Res	Type	RSRZ
1	B	43	ILE	2.9
1	B	73	PRO	2.8
1	B	353	THR	2.8
1	A	362	ASN	2.8
1	B	21	ILE	2.8
1	B	402	CYS	2.7
1	B	71	THR	2.7
1	B	236	VAL	2.7
1	A	595	GLY	2.6
1	B	151	GLY	2.5
1	B	380	PHE	2.5
1	B	348	VAL	2.5
1	B	404	ALA	2.5
1	B	89	LEU	2.5
1	B	101	VAL	2.5
1	B	28	CYS	2.4
1	B	241	LYS	2.4
1	B	231	LEU	2.4
1	B	378	LYS	2.4
1	B	349	PRO	2.4
1	B	367	LEU	2.3
1	B	397	LEU	2.3
1	B	407	VAL	2.3
1	B	413	GLY	2.3
1	B	48	ILE	2.3
1	B	19	ALA	2.3
1	B	58	VAL	2.2
1	B	457	PHE	2.2
1	B	230	LEU	2.2
1	B	100	ILE	2.2
1	B	106	TYR	2.2
1	B	69	ILE	2.2
1	B	82	ILE	2.1
1	B	87	ALA	2.1
1	B	94	ASN	2.1
1	B	267	PRO	2.1
1	A	596	CYS	2.1
1	B	22	VAL	2.1
1	B	379	LYS	2.1
1	B	346	LEU	2.1
1	B	355	LEU	2.1
1	B	79	GLY	2.1

Continued on next page...

Continued from previous page...

Mol	Chain	Res	Type	RSRZ
1	B	396	GLN	2.1
1	B	371	LYS	2.1
1	B	270	ILE	2.1
1	B	272	TYR	2.0
1	B	347	CYS	2.0
1	B	20	VAL	2.0

6.2 Non-standard residues in protein, DNA, RNA chains [i](#)

There are no non-standard protein/DNA/RNA residues in this entry.

6.3 Carbohydrates [i](#)

There are no oligosaccharides in this entry.

6.4 Ligands [i](#)

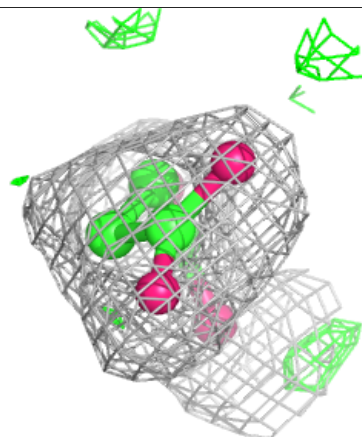
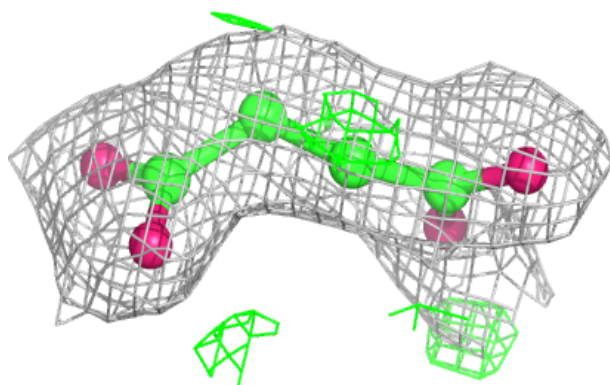
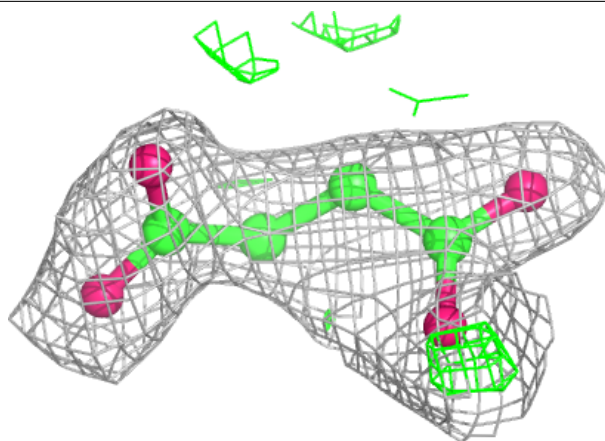
In the following table, the Atoms column lists the number of modelled atoms in the group and the number defined in the chemical component dictionary. The B-factors column lists the minimum, median, 95th percentile and maximum values of B factors of atoms in the group. The column labelled 'Q<0.9' lists the number of atoms with occupancy less than 0.9.

Mol	Type	Chain	Res	Atoms	RSCC	RSR	B-factors(Å ²)	Q<0.9
4	SIN	A	603	8/8	0.78	0.17	56,71,78,93	0
3	GSH	A	602	20/20	0.87	0.11	58,64,72,75	0
2	FAD	B	601	53/53	0.90	0.12	45,64,99,107	0
2	FAD	A	601	53/53	0.95	0.08	38,45,51,55	0
5	NA	A	604	1/1	0.99	0.05	44,44,44,44	0

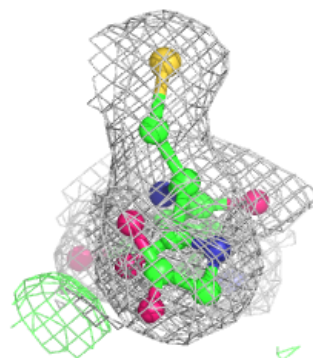
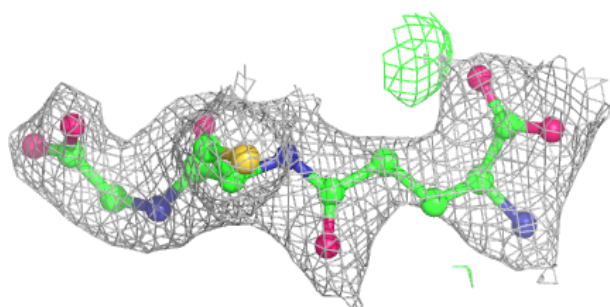
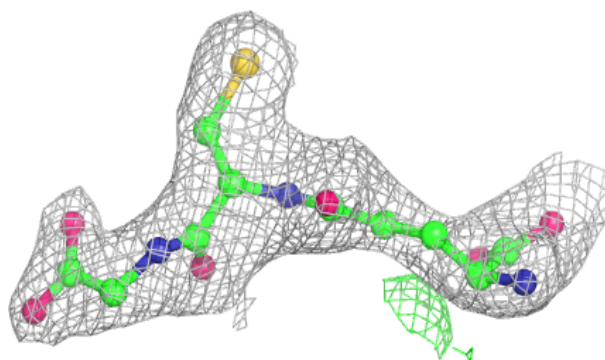
The following is a graphical depiction of the model fit to experimental electron density of all instances of the Ligand of Interest. In addition, ligands with molecular weight > 250 and outliers as shown on the geometry validation Tables will also be included. Each fit is shown from different orientation to approximate a three-dimensional view.

Electron density around SIN A 603:

$2mF_o-DF_c$ (at 0.7 rmsd) in gray
 mF_o-DF_c (at 3 rmsd) in purple (negative)
and green (positive)

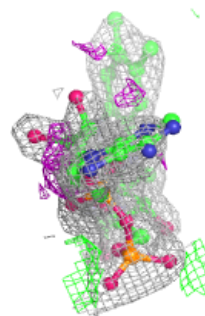
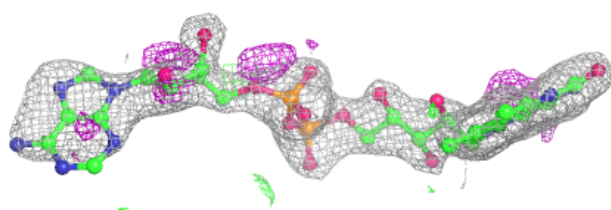
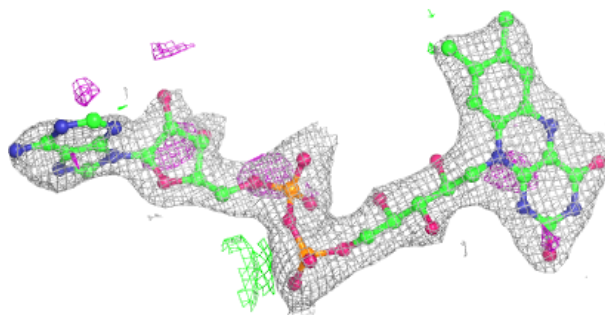
**Electron density around GSH A 602:**

$2mF_o-DF_c$ (at 0.7 rmsd) in gray
 mF_o-DF_c (at 3 rmsd) in purple (negative)
and green (positive)

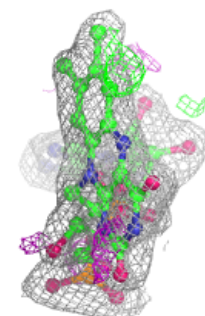
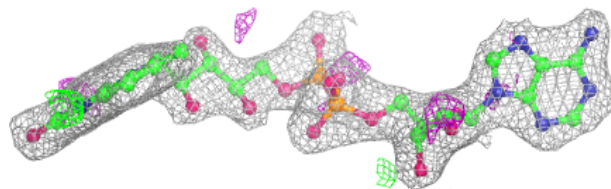
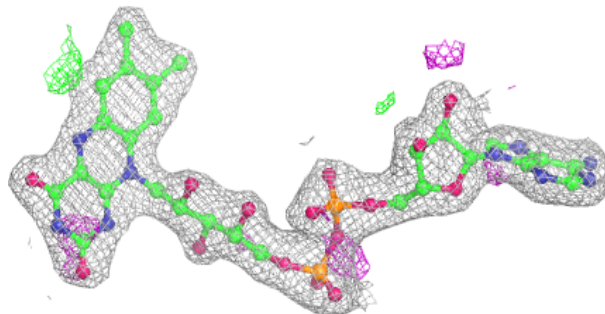


Electron density around FAD B 601:

$2mF_o-DF_c$ (at 0.7 rmsd) in gray
 mF_o-DF_c (at 3 rmsd) in purple (negative)
and green (positive)

**Electron density around FAD A 601:**

$2mF_o-DF_c$ (at 0.7 rmsd) in gray
 mF_o-DF_c (at 3 rmsd) in purple (negative)
and green (positive)



6.5 Other polymers [i](#)

There are no such residues in this entry.