



# Full wwPDB X-ray Structure Validation Report ⓘ

Mar 12, 2026 – 02:50 PM UTC

PDB ID : 3BSO / pdb\_00003bso  
Title : Norwalk Virus polymerase bound to cytidine 5'-triphosphate and primer-template RNA  
Authors : Zamyatkin, D.F.; Ng, K.K.S.  
Deposited on : 2007-12-26  
Resolution : 1.74 Å (reported)

This is a Full wwPDB X-ray Structure Validation Report for a publicly released PDB entry.

We welcome your comments at [validation@mail.wwpdb.org](mailto:validation@mail.wwpdb.org)

A user guide is available at

<https://www.wwpdb.org/validation/2017/XrayValidationReportHelp>

with specific help available everywhere you see the ⓘ symbol.

The types of validation reports are described at

<http://www.wwpdb.org/validation/2017/FAQs#types>.

---

The following versions of software and data (see [references ⓘ](#)) were used in the production of this report:

MolProbity : 4-5-2 with Phenix2.0  
Mogul : 2022.3.0, CSD as543be (2022)  
Xtrriage (Phenix) : 2.0  
EDS : 3.0  
Buster-report : wwPDB partial adaption of 1.1.7 (2018)  
Percentile statistics : 20250101.v01 (using entries in the PDB archive January 1st 2025)  
CCP4 : 9.0.010 (Gargrove)  
Density-Fitness : 1.0.12  
Ideal geometry (proteins) : Engh & Huber (2001)  
Ideal geometry (DNA, RNA) : Parkinson et al. (1996)  
Validation Pipeline (wwPDB-VP) : 2.49

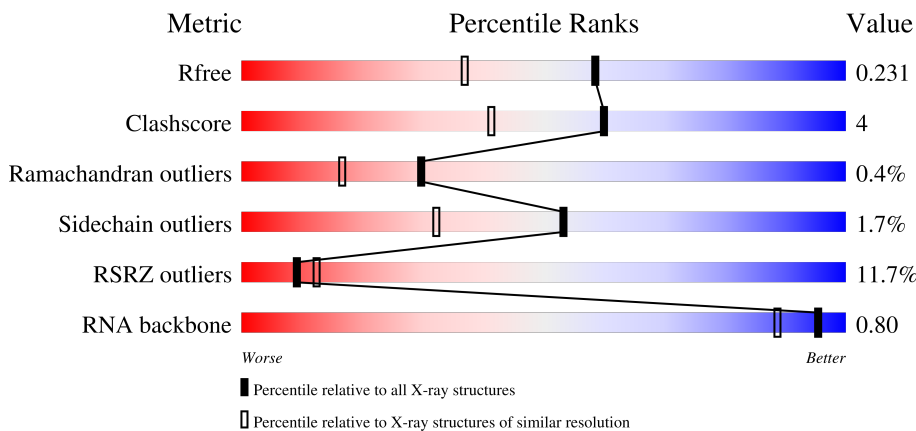
# 1 Overall quality at a glance i

The following experimental techniques were used to determine the structure:

*X-RAY DIFFRACTION*

The reported resolution of this entry is 1.74 Å.

Percentile scores (ranging between 0-100) for global validation metrics of the entry are shown in the following graphic. The table shows the number of entries on which the scores are based.



Metric	Whole archive (#Entries)	Similar resolution (#Entries, resolution range(Å))
$R_{free}$	180053	1187 (1.74-1.74)
Clashscore	190562	1207 (1.74-1.74)
Ramachandran outliers	187476	1200 (1.74-1.74)
Sidechain outliers	187428	1200 (1.74-1.74)
RSRZ outliers	180081	1188 (1.74-1.74)
RNA backbone	3983	1062 (2.20-1.28)

The table below summarises the geometric issues observed across the polymeric chains and their fit to the electron density. The red, orange, yellow and green segments of the lower bar indicate the fraction of residues that contain outliers for  $\geq 3$ , 2, 1 and 0 types of geometric quality criteria respectively. A grey segment represents the fraction of residues that are not modelled. The numeric value for each fraction is indicated below the corresponding segment, with a dot representing fractions  $\leq 5\%$ . The upper red bar (where present) indicates the fraction of residues that have poor fit to the electron density. The numeric value is given above the bar.

Mol	Chain	Length	Quality of chain
1	A	510	<div style="display: flex; align-items: center;"> <div style="width: 11%; height: 10px; background-color: red; margin-right: 5px;"></div> <div style="width: 86%; height: 10px; background-color: green; margin-right: 5px;"></div> <div style="width: 8%; height: 10px; background-color: yellow; margin-right: 5px;"></div> <div style="width: 6%; height: 10px; background-color: grey;"></div> </div> <p style="text-align: center;">11%      86%      8%      6%</p>
2	P	8	<div style="display: flex; align-items: center;"> <div style="width: 12%; height: 10px; background-color: red; margin-right: 5px;"></div> <div style="width: 88%; height: 10px; background-color: green; margin-right: 5px;"></div> <div style="width: 12%; height: 10px; background-color: grey;"></div> </div> <p style="text-align: center;">12%      88%      12%</p>
3	T	9	<div style="display: flex; align-items: center;"> <div style="width: 11%; height: 10px; background-color: red; margin-right: 5px;"></div> <div style="width: 78%; height: 10px; background-color: green; margin-right: 5px;"></div> <div style="width: 22%; height: 10px; background-color: yellow;"></div> </div> <p style="text-align: center;">11%      78%      22%</p>

## 2 Entry composition [i](#)

There are 7 unique types of molecules in this entry. The entry contains 4557 atoms, of which 0 are hydrogens and 0 are deuteriums.

In the tables below, the ZeroOcc column contains the number of atoms modelled with zero occupancy, the AltConf column contains the number of residues with at least one atom in alternate conformation and the Trace column contains the number of residues modelled with at most 2 atoms.

- Molecule 1 is a protein called RNA dependent RNA polymerase.

Mol	Chain	Residues	Atoms					ZeroOcc	AltConf	Trace
			Total	C	N	O	S			
1	A	479	3762	2394	646	701	21	0	0	0

There is a discrepancy between the modelled and reference sequences:

Chain	Residue	Modelled	Actual	Comment	Reference
A	2	SER	GLY	engineered mutation	UNP Q70ET3

- Molecule 2 is a RNA chain called RNA (5'-R(\*UP\*GP\*CP\*CP\*CP\*GP\*GP\*G)-3').

Mol	Chain	Residues	Atoms					ZeroOcc	AltConf	Trace
			Total	C	N	O	P			
2	P	7	152	67	29	49	7	0	0	0

- Molecule 3 is a RNA chain called RNA (5'-R(P\*UP\*GP\*CP\*CP\*CP\*GP\*GP\*GP\*C)-3').

Mol	Chain	Residues	Atoms					ZeroOcc	AltConf	Trace
			Total	C	N	O	P			
3	T	9	192	85	34	64	9	0	0	0

- Molecule 4 is GLYCEROL (CCD ID: GOL) (formula: C<sub>3</sub>H<sub>8</sub>O<sub>3</sub>).

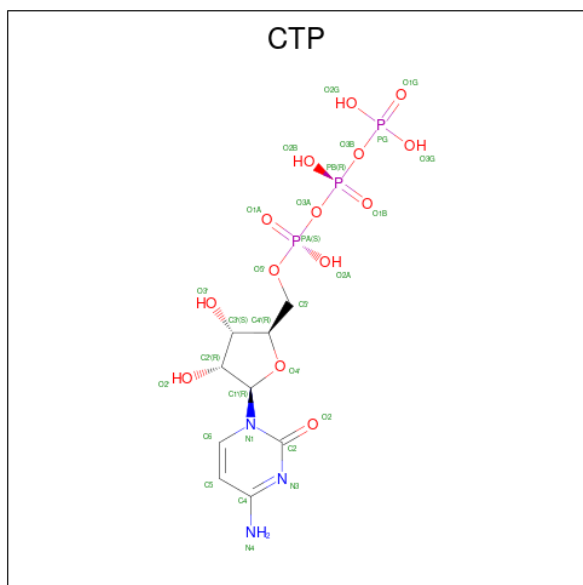


Mol	Chain	Residues	Atoms	ZeroOcc	AltConf
4	A	1	Total C O 6 3 3	0	0
4	A	1	Total C O 6 3 3	0	0
4	P	1	Total C O 6 3 3	0	0
4	T	1	Total C O 6 3 3	0	0

- Molecule 5 is MANGANESE (II) ION (CCD ID: MN) (formula: Mn).

Mol	Chain	Residues	Atoms	ZeroOcc	AltConf
5	A	3	Total Mn 3 3	0	0

- Molecule 6 is CYTIDINE-5'-TRIPHOSPHATE (CCD ID: CTP) (formula: C<sub>9</sub>H<sub>16</sub>N<sub>3</sub>O<sub>14</sub>P<sub>3</sub>).



Mol	Chain	Residues	Atoms					ZeroOcc	AltConf
			Total	C	N	O	P		
6	A	1	29	9	3	14	3	0	0

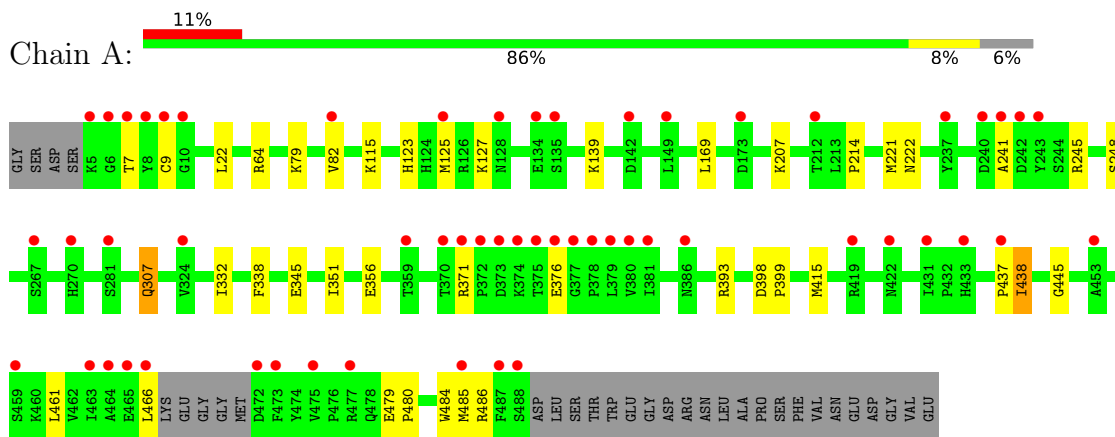
- Molecule 7 is water.

Mol	Chain	Residues	Atoms		ZeroOcc	AltConf
7	A	346	Total	O	0	0
			346	346		
7	P	15	Total	O	0	0
			15	15		
7	T	34	Total	O	0	0
			34	34		

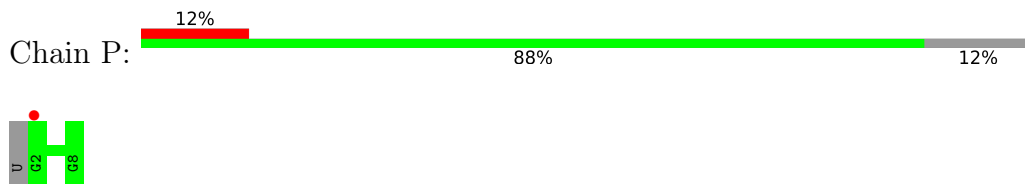
### 3 Residue-property plots [i](#)

These plots are drawn for all protein, RNA, DNA and oligosaccharide chains in the entry. The first graphic for a chain summarises the proportions of the various outlier classes displayed in the second graphic. The second graphic shows the sequence view annotated by issues in geometry and electron density. Residues are color-coded according to the number of geometric quality criteria for which they contain at least one outlier: green = 0, yellow = 1, orange = 2 and red = 3 or more. A red dot above a residue indicates a poor fit to the electron density ( $RSRZ > 2$ ). Stretches of 2 or more consecutive residues without any outlier are shown as a green connector. Residues present in the sample, but not in the model, are shown in grey.

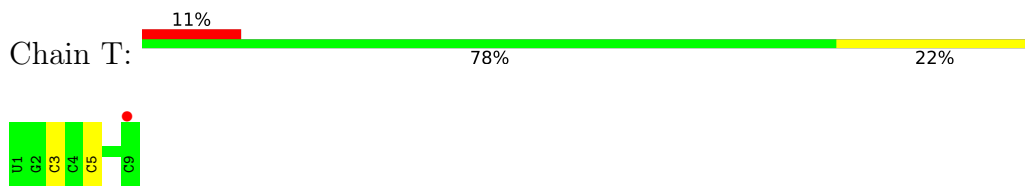
- Molecule 1: RNA dependent RNA polymerase



- Molecule 2: RNA (5'-R(\*UP\*GP\*CP\*CP\*CP\*GP\*GP\*G)-3')



- Molecule 3: RNA (5'-R(P\*UP\*GP\*CP\*CP\*CP\*GP\*GP\*GP\*C)-3')



## 4 Data and refinement statistics

Property	Value	Source
Space group	P 21 21 21	Depositor
Cell constants a, b, c, $\alpha$ , $\beta$ , $\gamma$	75.10Å 93.47Å 96.54Å 90.00° 90.00° 90.00°	Depositor
Resolution (Å)	60.00 – 1.74 60.00 – 1.74	Depositor EDS
% Data completeness (in resolution range)	98.2 (60.00-1.74) 98.1 (60.00-1.74)	Depositor EDS
$R_{merge}$	0.04	Depositor
$R_{sym}$	0.04	Depositor
$\langle I/\sigma(I) \rangle$ <sup>1</sup>	2.24 (at 1.74Å)	Xtrriage
Refinement program	REFMAC 5.2.0019	Depositor
R, $R_{free}$	0.201 , 0.232 0.199 , 0.231	Depositor DCC
$R_{free}$ test set	3486 reflections (4.96%)	wwPDB-VP
Wilson B-factor (Å <sup>2</sup> )	29.0	Xtrriage
Anisotropy	0.511	Xtrriage
Bulk solvent $k_{sol}$ (e/Å <sup>3</sup> ), $B_{sol}$ (Å <sup>2</sup> )	0.36 , 36.6	EDS
L-test for twinning <sup>2</sup>	$\langle  L  \rangle = 0.50$ , $\langle L^2 \rangle = 0.33$	Xtrriage
Estimated twinning fraction	0.011 for -h,l,k	Xtrriage
$F_o, F_c$ correlation	0.96	EDS
Total number of atoms	4557	wwPDB-VP
Average B, all atoms (Å <sup>2</sup> )	38.0	wwPDB-VP

Xtrriage's analysis on translational NCS is as follows: *The largest off-origin peak in the Patterson function is 3.75% of the height of the origin peak. No significant pseudotranslation is detected.*

<sup>1</sup>Intensities estimated from amplitudes.

<sup>2</sup>Theoretical values of  $\langle |L| \rangle$ ,  $\langle L^2 \rangle$  for acentric reflections are 0.5, 0.333 respectively for untwinned datasets, and 0.375, 0.2 for perfectly twinned datasets.

## 5 Model quality [i](#)

### 5.1 Standard geometry [i](#)

Bond lengths and bond angles in the following residue types are not validated in this section: GOL, MN, CTP

The Z score for a bond length (or angle) is the number of standard deviations the observed value is removed from the expected value. A bond length (or angle) with  $|Z| > 5$  is considered an outlier worth inspection. RMSZ is the root-mean-square of all Z scores of the bond lengths (or angles).

Mol	Chain	Bond lengths		Bond angles	
		RMSZ	# Z  >5	RMSZ	# Z  >5
1	A	0.46	0/3859	0.73	0/5234
2	P	0.53	0/169	0.82	0/262
3	T	0.47	0/213	0.96	0/330
All	All	0.47	0/4241	0.75	0/5826

There are no bond length outliers.

There are no bond angle outliers.

There are no chirality outliers.

There are no planarity outliers.

### 5.2 Too-close contacts [i](#)

In the following table, the Non-H and H(model) columns list the number of non-hydrogen atoms and hydrogen atoms in the chain respectively. The H(added) column lists the number of hydrogen atoms added and optimized by MolProbity. The Clashes column lists the number of clashes within the asymmetric unit, whereas Symm-Clashes lists symmetry-related clashes.

Mol	Chain	Non-H	H(model)	H(added)	Clashes	Symm-Clashes
1	A	3762	0	3753	33	0
2	P	152	0	77	0	0
3	T	192	0	99	3	0
4	A	12	0	16	0	0
4	P	6	0	8	1	0
4	T	6	0	8	2	0
5	A	3	0	0	0	0
6	A	29	0	12	0	0
7	A	346	0	0	1	0
7	P	15	0	0	0	0

*Continued on next page...*

*Continued from previous page...*

Mol	Chain	Non-H	H(model)	H(added)	Clashes	Symm-Clashes
7	T	34	0	0	0	0
All	All	4557	0	3973	35	0

The all-atom clashscore is defined as the number of clashes found per 1000 atoms (including hydrogen atoms). The all-atom clashscore for this structure is 4.

All (35) close contacts within the same asymmetric unit are listed below, sorted by their clash magnitude.

Atom-1	Atom-2	Interatomic distance (Å)	Clash overlap (Å)
1:A:445:GLY:HA3	1:A:485:MET:CE	1.75	1.16
1:A:445:GLY:HA3	1:A:485:MET:HE3	1.16	1.11
1:A:221:MET:HG2	1:A:393:ARG:HD3	1.36	1.03
1:A:445:GLY:CA	1:A:485:MET:HE3	1.93	0.98
1:A:221:MET:HG2	1:A:393:ARG:CD	1.97	0.92
1:A:307:GLN:HE21	1:A:307:GLN:H	1.33	0.76
1:A:123:HIS:HB3	1:A:125:MET:HE2	1.71	0.72
1:A:445:GLY:HA3	1:A:485:MET:HE2	1.72	0.70
1:A:221:MET:CG	1:A:393:ARG:HD3	2.23	0.65
3:T:3:C:H5	4:T:10:GOL:H12	1.68	0.58
1:A:125:MET:HE1	1:A:139:LYS:HB2	1.87	0.57
1:A:9:CYS:SG	1:A:64:ARG:HG2	2.44	0.56
1:A:79:LYS:O	1:A:82:VAL:HG22	2.07	0.54
1:A:241:ALA:HB3	1:A:345:GLU:OE2	2.08	0.54
1:A:445:GLY:C	1:A:485:MET:HE3	2.32	0.54
1:A:479:GLU:HB2	1:A:480:PRO:HD3	1.89	0.54
1:A:398:ASP:HB2	1:A:399:PRO:CD	2.38	0.53
1:A:484:TRP:HZ3	1:A:485:MET:CE	2.23	0.52
1:A:307:GLN:H	1:A:307:GLN:NE2	2.06	0.51
1:A:169:LEU:HD11	4:P:9:GOL:H11	1.93	0.51
1:A:207:LYS:HE2	3:T:5:C:H5"	1.93	0.50
1:A:245:ARG:HB3	1:A:248:SER:OG	2.12	0.50
1:A:398:ASP:HB2	1:A:399:PRO:HD2	1.93	0.49
1:A:214:PRO:HB3	1:A:338:PHE:HB2	1.94	0.48
1:A:484:TRP:CZ3	1:A:485:MET:HE2	2.48	0.48
1:A:79:LYS:HB3	1:A:82:VAL:HG22	2.00	0.43
1:A:415:MET:HE2	1:A:461:LEU:HB3	2.00	0.43
1:A:438:ILE:H	1:A:438:ILE:HG13	1.57	0.42
1:A:484:TRP:HZ3	1:A:485:MET:HE1	1.85	0.42
1:A:484:TRP:CZ3	1:A:485:MET:CE	3.02	0.42
1:A:115:LYS:HA	1:A:127:LYS:HB2	2.02	0.41
3:T:3:C:C5	4:T:10:GOL:H12	2.51	0.41

*Continued on next page...*

Continued from previous page...

Atom-1	Atom-2	Interatomic distance (Å)	Clash overlap (Å)
1:A:398:ASP:CG	1:A:486:ARG:HH12	2.28	0.41
1:A:222:ASN:ND2	7:A:791:HOH:O	2.54	0.41
1:A:332:ILE:HD13	1:A:351:ILE:HD13	2.03	0.41

There are no symmetry-related clashes.

## 5.3 Torsion angles [i](#)

### 5.3.1 Protein backbone [i](#)

In the following table, the Percentiles column shows the percent Ramachandran outliers of the chain as a percentile score with respect to all X-ray entries followed by that with respect to entries of similar resolution.

The Analysed column shows the number of residues for which the backbone conformation was analysed, and the total number of residues.

Mol	Chain	Analysed	Favoured	Allowed	Outliers	Percentiles
1	A	475/510 (93%)	463 (98%)	10 (2%)	2 (0%)	30 16

All (2) Ramachandran outliers are listed below:

Mol	Chain	Res	Type
1	A	376	GLU
1	A	437	PRO

### 5.3.2 Protein sidechains [i](#)

In the following table, the Percentiles column shows the percent sidechain outliers of the chain as a percentile score with respect to all X-ray entries followed by that with respect to entries of similar resolution.

The Analysed column shows the number of residues for which the sidechain conformation was analysed, and the total number of residues.

Mol	Chain	Analysed	Rotameric	Outliers	Percentiles
1	A	414/439 (94%)	407 (98%)	7 (2%)	53 32

All (7) residues with a non-rotameric sidechain are listed below:

Mol	Chain	Res	Type
1	A	7	THR
1	A	22	LEU
1	A	307	GLN
1	A	356	GLU
1	A	371	ARG
1	A	438	ILE
1	A	466	LEU

Sometimes sidechains can be flipped to improve hydrogen bonding and reduce clashes. All (6) such sidechains are listed below:

Mol	Chain	Res	Type
1	A	92	ASN
1	A	123	HIS
1	A	307	GLN
1	A	414	GLN
1	A	433	HIS
1	A	435	GLN

### 5.3.3 RNA [i](#)

Mol	Chain	Analysed	Backbone Outliers	Pucker Outliers
2	P	6/8 (75%)	0	0
3	T	8/9 (88%)	0	0
All	All	14/17 (82%)	0	0

There are no RNA backbone outliers to report.

There are no RNA pucker outliers to report.

## 5.4 Non-standard residues in protein, DNA, RNA chains [i](#)

There are no non-standard protein/DNA/RNA residues in this entry.

## 5.5 Carbohydrates [i](#)

There are no oligosaccharides in this entry.

## 5.6 Ligand geometry [i](#)

Of 8 ligands modelled in this entry, 3 are monoatomic - leaving 5 for Mogul analysis.

In the following table, the Counts columns list the number of bonds (or angles) for which Mogul statistics could be retrieved, the number of bonds (or angles) that are observed in the model and the number of bonds (or angles) that are defined in the Chemical Component Dictionary. The Link column lists molecule types, if any, to which the group is linked. The Z score for a bond length (or angle) is the number of standard deviations the observed value is removed from the expected value. A bond length (or angle) with  $|Z| > 2$  is considered an outlier worth inspection. RMSZ is the root-mean-square of all Z scores of the bond lengths (or angles).

Mol	Type	Chain	Res	Link	Bond lengths			Bond angles		
					Counts	RMSZ	# Z  > 2	Counts	RMSZ	# Z  > 2
6	CTP	A	514	5	29,30,30	1.02	2 (6%)	43,47,47	0.73	0
4	GOL	P	9	-	5,5,5	0.32	0	5,5,5	0.60	0
4	GOL	T	10	-	5,5,5	0.37	0	5,5,5	0.63	0
4	GOL	A	515	-	5,5,5	0.37	0	5,5,5	0.22	0
4	GOL	A	516	-	5,5,5	0.37	0	5,5,5	0.30	0

In the following table, the Chirals column lists the number of chiral outliers, the number of chiral centers analysed, the number of these observed in the model and the number defined in the Chemical Component Dictionary. Similar counts are reported in the Torsion and Rings columns. '-' means no outliers of that kind were identified.

Mol	Type	Chain	Res	Link	Chirals	Torsions	Rings
6	CTP	A	514	5	-	1/22/38/38	0/2/2/2
4	GOL	P	9	-	-	4/4/4/4	-
4	GOL	T	10	-	-	4/4/4/4	-
4	GOL	A	515	-	-	2/4/4/4	-
4	GOL	A	516	-	-	1/4/4/4	-

All (2) bond length outliers are listed below:

Mol	Chain	Res	Type	Atoms	Z	Observed(Å)	Ideal(Å)
6	A	514	CTP	PB-O3A	3.51	1.63	1.59
6	A	514	CTP	PA-O3A	3.41	1.63	1.59

There are no bond angle outliers.

There are no chirality outliers.

All (12) torsion outliers are listed below:

Mol	Chain	Res	Type	Atoms
4	T	10	GOL	O1-C1-C2-C3
4	T	10	GOL	C1-C2-C3-O3
4	A	515	GOL	C1-C2-C3-O3

*Continued on next page...*

*Continued from previous page...*

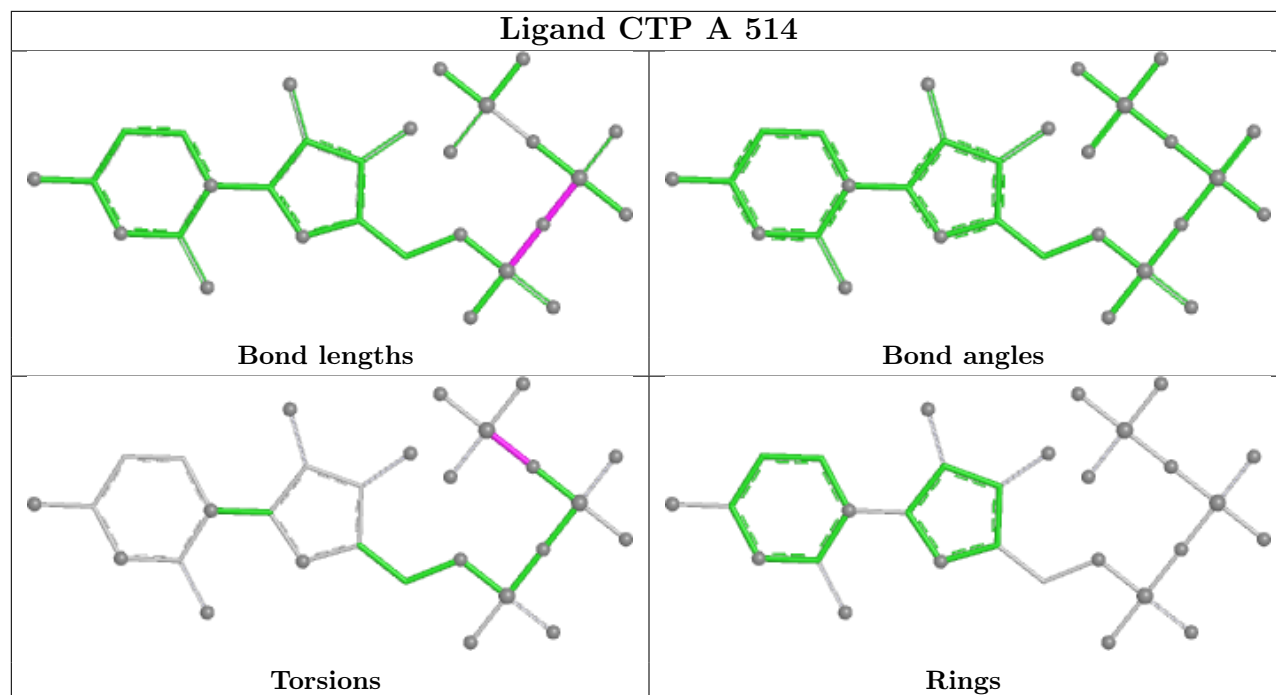
Mol	Chain	Res	Type	Atoms
4	A	516	GOL	O1-C1-C2-C3
4	P	9	GOL	O1-C1-C2-C3
4	P	9	GOL	C1-C2-C3-O3
4	P	9	GOL	O2-C2-C3-O3
4	T	10	GOL	O1-C1-C2-O2
4	A	515	GOL	O2-C2-C3-O3
4	T	10	GOL	O2-C2-C3-O3
6	A	514	CTP	PB-O3B-PG-O1G
4	P	9	GOL	O1-C1-C2-O2

There are no ring outliers.

2 monomers are involved in 3 short contacts:

Mol	Chain	Res	Type	Clashes	Symm-Clashes
4	P	9	GOL	1	0
4	T	10	GOL	2	0

The following is a two-dimensional graphical depiction of Mogul quality analysis of bond lengths, bond angles, torsion angles, and ring geometry for all instances of the Ligand of Interest. In addition, ligands with molecular weight > 250 and outliers as shown on the validation Tables will also be included. For torsion angles, if less than 5% of the Mogul distribution of torsion angles is within 10 degrees of the torsion angle in question, then that torsion angle is considered an outlier. Any bond that is central to one or more torsion angles identified as an outlier by Mogul will be highlighted in the graph. For rings, the root-mean-square deviation (RMSD) between the ring in question and similar rings identified by Mogul is calculated over all ring torsion angles. If the average RMSD is greater than 60 degrees and the minimal RMSD between the ring in question and any Mogul-identified rings is also greater than 60 degrees, then that ring is considered an outlier. The outliers are highlighted in purple. The color gray indicates Mogul did not find sufficient equivalents in the CSD to analyse the geometry.



## 5.7 Other polymers [i](#)

There are no such residues in this entry.

## 5.8 Polymer linkage issues [i](#)

There are no chain breaks in this entry.

## 6 Fit of model and data

### 6.1 Protein, DNA and RNA chains

In the following table, the column labelled ‘#RSRZ> 2’ contains the number (and percentage) of RSRZ outliers, followed by percent RSRZ outliers for the chain as percentile scores relative to all X-ray entries and entries of similar resolution. The OWAB column contains the minimum, median, 95<sup>th</sup> percentile and maximum values of the occupancy-weighted average B-factor per residue. The column labelled ‘Q< 0.9’ lists the number of (and percentage) of residues with an average occupancy less than 0.9.

Mol	Chain	Analysed	<RSRZ>	#RSRZ>2	OWAB(Å <sup>2</sup> )	Q<0.9
1	A	479/510 (93%)	0.82	56 (11%) <b>9</b> <b>12</b>	22, 34, 59, 93	0
2	P	7/8 (87%)	0.17	1 (14%) <b>6</b> <b>8</b>	27, 30, 51, 94	0
3	T	9/9 (100%)	0.51	1 (11%) <b>10</b> <b>14</b>	24, 26, 48, 92	0
All	All	495/527 (93%)	0.81	58 (11%) <b>9</b> <b>12</b>	22, 34, 59, 94	0

All (58) RSRZ outliers are listed below:

Mol	Chain	Res	Type	RSRZ
1	A	466	LEU	10.0
1	A	375	THR	8.2
1	A	378	PRO	6.6
1	A	372	PRO	5.5
1	A	473	PHE	5.4
1	A	437	PRO	5.2
1	A	241	ALA	4.9
1	A	377	GLY	4.9
1	A	488	SER	4.7
3	T	9	C	4.7
1	A	374	LYS	4.7
1	A	270	HIS	4.1
1	A	240	ASP	4.1
1	A	173	ASP	3.9
1	A	9	CYS	3.9
1	A	6	GLY	3.9
1	A	379	LEU	3.9
1	A	212	THR	3.8
1	A	149	LEU	3.8
1	A	82	VAL	3.7
1	A	373	ASP	3.7
1	A	370	THR	3.5
1	A	242	ASP	3.4

*Continued on next page...*

*Continued from previous page...*

Mol	Chain	Res	Type	RSRZ
1	A	464	ALA	3.4
1	A	376	GLU	3.4
1	A	371	ARG	3.3
1	A	5	LYS	3.1
1	A	477	ARG	3.0
1	A	472	ASP	2.9
1	A	7	THR	2.9
1	A	8	TYR	2.9
1	A	433	HIS	2.8
1	A	125	MET	2.7
1	A	380	VAL	2.7
1	A	465	GLU	2.6
1	A	134	GLU	2.6
1	A	10	GLY	2.5
1	A	386	ASN	2.5
1	A	459	SER	2.5
1	A	487	PHE	2.4
1	A	463	ILE	2.4
1	A	237	TYR	2.3
1	A	135	SER	2.3
1	A	485	MET	2.3
1	A	267	SER	2.2
1	A	142	ASP	2.2
1	A	381	ILE	2.2
1	A	453	ALA	2.2
1	A	431	ILE	2.2
1	A	324	VAL	2.2
2	P	2	G	2.2
1	A	475	VAL	2.1
1	A	422	ASN	2.1
1	A	359	THR	2.1
1	A	243	TYR	2.1
1	A	281	SER	2.1
1	A	128	ASN	2.0
1	A	419	ARG	2.0

## 6.2 Non-standard residues in protein, DNA, RNA chains

There are no non-standard protein/DNA/RNA residues in this entry.

### 6.3 Carbohydrates [i](#)

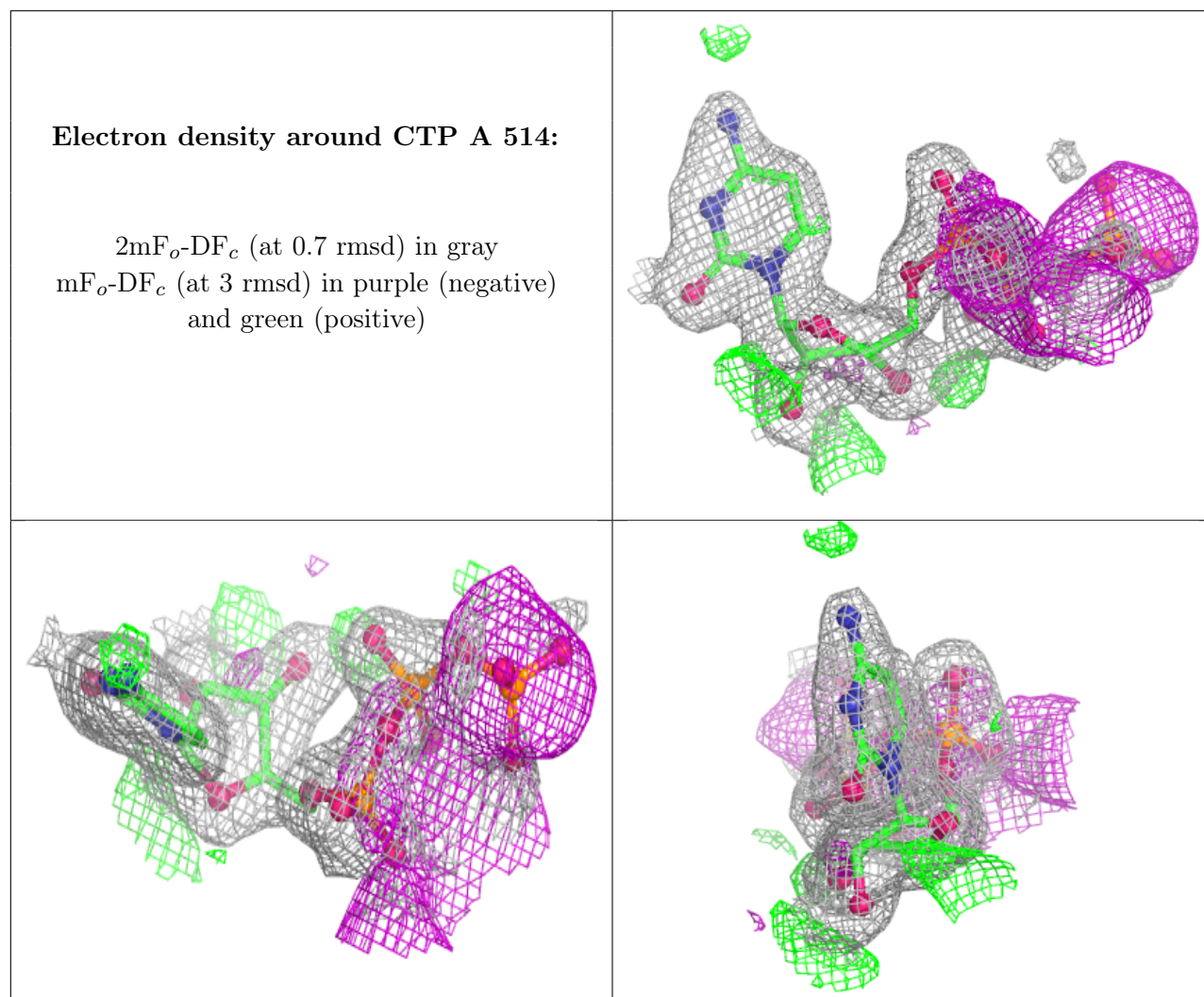
There are no oligosaccharides in this entry.

### 6.4 Ligands [i](#)

In the following table, the Atoms column lists the number of modelled atoms in the group and the number defined in the chemical component dictionary. The B-factors column lists the minimum, median, 95<sup>th</sup> percentile and maximum values of B factors of atoms in the group. The column labelled 'Q< 0.9' lists the number of atoms with occupancy less than 0.9.

Mol	Type	Chain	Res	Atoms	RSCC	RSR	B-factors(Å <sup>2</sup> )	Q<0.9
4	GOL	A	516	6/6	0.78	0.17	45,56,58,60	0
6	CTP	A	514	29/29	0.82	0.15	27,32,63,72	0
4	GOL	P	9	6/6	0.84	0.21	40,55,59,59	0
4	GOL	A	515	6/6	0.88	0.15	33,56,57,62	0
4	GOL	T	10	6/6	0.89	0.11	34,43,45,48	0
5	MN	A	512	1/1	0.98	0.25	40,40,40,40	0
5	MN	A	513	1/1	0.99	0.05	29,29,29,29	0
5	MN	A	511	1/1	0.99	0.22	36,36,36,36	0

The following is a graphical depiction of the model fit to experimental electron density of all instances of the Ligand of Interest. In addition, ligands with molecular weight > 250 and outliers as shown on the geometry validation Tables will also be included. Each fit is shown from different orientation to approximate a three-dimensional view.



## 6.5 Other polymers [i](#)

There are no such residues in this entry.