



Full wwPDB X-ray Structure Validation Report ⓘ

Feb 12, 2026 – 12:32 PM EST

PDB ID : 3KZS / pdb_00003kzs
Title : Crystal structure of glycosyl hydrolase family 5 (NP_809925.1) from BACTEROIDES THETA IOTAOMICRON VPI-5482 at 2.10 Å resolution
Authors : Joint Center for Structural Genomics (JCSG)
Deposited on : 2009-12-08
Resolution : 2.10 Å (reported)

This is a Full wwPDB X-ray Structure Validation Report for a publicly released PDB entry.

We welcome your comments at validation@mail.wwpdb.org

A user guide is available at

<https://www.wwpdb.org/validation/2017/XrayValidationReportHelp>

with specific help available everywhere you see the ⓘ symbol.

The types of validation reports are described at

<http://www.wwpdb.org/validation/2017/FAQs#types>.

The following versions of software and data (see [references ⓘ](#)) were used in the production of this report:

MolProbity : 4-5-2 with Phenix2.0
Mogul : 2022.3.0, CSD as543be (2022)
Xtriage (Phenix) : 2.0
EDS : 3.0
Percentile statistics : 20231227.v01 (using entries in the PDB archive December 27th 2023)
CCP4 : 9.0.010 (Gargrove)
Density-Fitness : 1.0.12
Ideal geometry (proteins) : Engh & Huber (2001)
Ideal geometry (DNA, RNA) : Parkinson et al. (1996)
Validation Pipeline (wwPDB-VP) : 2.48

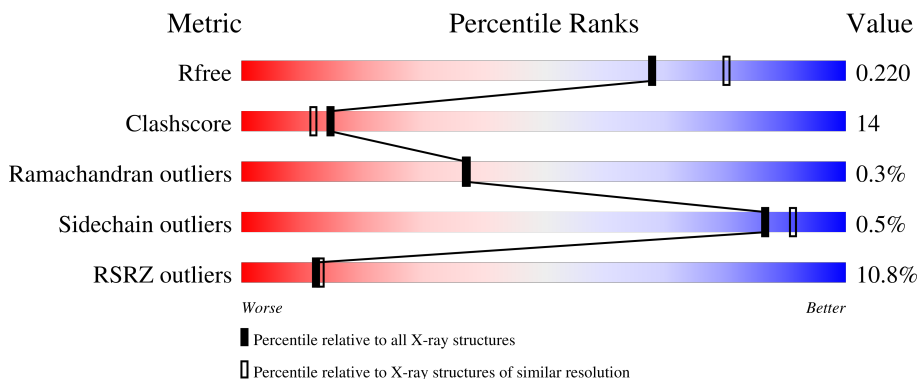
1 Overall quality at a glance i

The following experimental techniques were used to determine the structure:

X-RAY DIFFRACTION

The reported resolution of this entry is 2.10 Å.

Percentile scores (ranging between 0-100) for global validation metrics of the entry are shown in the following graphic. The table shows the number of entries on which the scores are based.



Metric	Whole archive (#Entries)	Similar resolution (#Entries, resolution range(Å))
R_{free}	164625	6234 (2.10-2.10)
Clashscore	180529	6893 (2.10-2.10)
Ramachandran outliers	177936	6839 (2.10-2.10)
Sidechain outliers	177891	6840 (2.10-2.10)
RSRZ outliers	164620	6234 (2.10-2.10)

The table below summarises the geometric issues observed across the polymeric chains and their fit to the electron density. The red, orange, yellow and green segments of the lower bar indicate the fraction of residues that contain outliers for ≥ 3 , 2, 1 and 0 types of geometric quality criteria respectively. A grey segment represents the fraction of residues that are not modelled. The numeric value for each fraction is indicated below the corresponding segment, with a dot representing fractions $\leq 5\%$. The upper red bar (where present) indicates the fraction of residues that have poor fit to the electron density. The numeric value is given above the bar.

Mol	Chain	Length	Quality of chain
1	A	463	<div style="display: flex; align-items: center;"> <div style="width: 2%; height: 10px; background-color: red; margin-right: 2px;"></div> <div style="width: 89%; height: 10px; background-color: green; margin-right: 2px;"></div> <div style="width: 10%; height: 10px; background-color: yellow; margin-right: 2px;"></div> <div style="width: 1%; height: 10px; background-color: grey; margin-right: 2px;"></div> </div> <p style="margin-left: 20px;">2% 89% 10% .</p>
1	B	463	<div style="display: flex; align-items: center;"> <div style="width: 2%; height: 10px; background-color: red; margin-right: 2px;"></div> <div style="width: 90%; height: 10px; background-color: green; margin-right: 2px;"></div> <div style="width: 8%; height: 10px; background-color: yellow; margin-right: 2px;"></div> <div style="width: 1%; height: 10px; background-color: grey; margin-right: 2px;"></div> </div> <p style="margin-left: 20px;">2% 90% 8% .</p>
1	C	463	<div style="display: flex; align-items: center;"> <div style="width: 2%; height: 10px; background-color: red; margin-right: 2px;"></div> <div style="width: 89%; height: 10px; background-color: green; margin-right: 2px;"></div> <div style="width: 9%; height: 10px; background-color: yellow; margin-right: 2px;"></div> <div style="width: 1%; height: 10px; background-color: grey; margin-right: 2px;"></div> </div> <p style="margin-left: 20px;">2% 89% 9% .</p>
1	D	463	<div style="display: flex; align-items: center;"> <div style="width: 36%; height: 10px; background-color: red; margin-right: 2px;"></div> <div style="width: 39%; height: 10px; background-color: green; margin-right: 2px;"></div> <div style="width: 58%; height: 10px; background-color: yellow; margin-right: 2px;"></div> <div style="width: 2%; height: 10px; background-color: grey; margin-right: 2px;"></div> </div> <p style="margin-left: 20px;">36% 39% 58% ..</p>

The following table lists non-polymeric compounds, carbohydrate monomers and non-standard

residues in protein, DNA, RNA chains that are outliers for geometric or electron-density-fit criteria:

Mol	Type	Chain	Res	Chirality	Geometry	Clashes	Electron density
3	MRD	B	485	-	-	X	-

2 Entry composition

There are 5 unique types of molecules in this entry. The entry contains 20249 atoms, of which 0 are hydrogens and 0 are deuteriums.

In the tables below, the ZeroOcc column contains the number of atoms modelled with zero occupancy, the AltConf column contains the number of residues with at least one atom in alternate conformation and the Trace column contains the number of residues modelled with at most 2 atoms.

- Molecule 1 is a protein called DUF4038 domain-containing protein.

Mol	Chain	Residues	Atoms						ZeroOcc	AltConf	Trace
			Total	C	N	O	S	Se			
1	A	457	3838	2459	649	712	3	15	0	14	0
1	B	456	3799	2434	643	704	3	15	0	9	0
1	C	456	3808	2440	645	705	3	15	0	10	0
1	D	457	7436	4756	1264	1380	6	30	0	457	0

There are 4 discrepancies between the modelled and reference sequences:

Chain	Residue	Modelled	Actual	Comment	Reference
A	0	GLY	-	expression tag	UNP Q8A905
B	0	GLY	-	expression tag	UNP Q8A905
C	0	GLY	-	expression tag	UNP Q8A905
D	0	GLY	-	expression tag	UNP Q8A905

- Molecule 2 is SULFATE ION (CCD ID: SO4) (formula: O₄S).



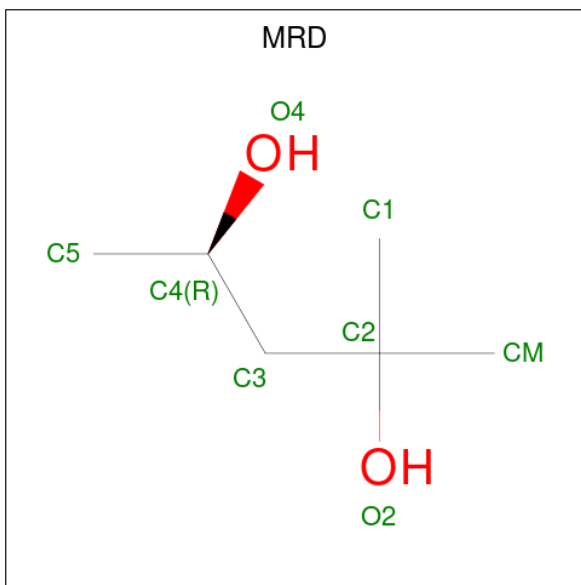
Mol	Chain	Residues	Atoms			ZeroOcc	AltConf
2	A	1	Total	O	S	0	0
			5	4	1		
2	A	1	Total	O	S	0	0
			5	4	1		
2	A	1	Total	O	S	0	0
			5	4	1		
2	A	1	Total	O	S	0	0
			5	4	1		
2	A	1	Total	O	S	0	0
			5	4	1		
2	B	1	Total	O	S	0	0
			5	4	1		
2	B	1	Total	O	S	0	0
			5	4	1		
2	B	1	Total	O	S	0	0
			5	4	1		
2	B	1	Total	O	S	0	0
			5	4	1		
2	C	1	Total	O	S	0	0
			5	4	1		
2	C	1	Total	O	S	0	0
			5	4	1		
2	C	1	Total	O	S	0	0
			5	4	1		

Continued on next page...

Continued from previous page...

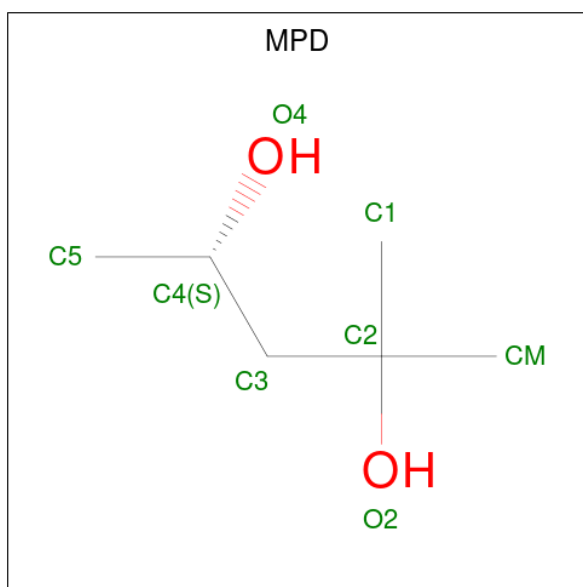
Mol	Chain	Residues	Atoms	ZeroOcc	AltConf
2	C	1	Total O S 5 4 1	0	0
2	C	1	Total O S 5 4 1	0	0

- Molecule 3 is (4R)-2-METHYLPENTANE-2,4-DIOL (CCD ID: MRD) (formula: C₆H₁₄O₂).



Mol	Chain	Residues	Atoms	ZeroOcc	AltConf
3	A	1	Total C O 8 6 2	0	0
3	A	1	Total C O 8 6 2	0	0
3	A	1	Total C O 8 6 2	0	0
3	B	1	Total C O 8 6 2	0	0
3	B	1	Total C O 8 6 2	0	0
3	B	1	Total C O 8 6 2	0	0
3	C	1	Total C O 8 6 2	0	0
3	C	1	Total C O 8 6 2	0	0

- Molecule 4 is (4S)-2-METHYL-2,4-PENTANEDIOL (CCD ID: MPD) (formula: C₆H₁₄O₂).



Mol	Chain	Residues	Atoms	ZeroOcc	AltConf
4	C	1	Total C O 8 6 2	0	0
4	C	1	Total C O 8 6 2	0	0

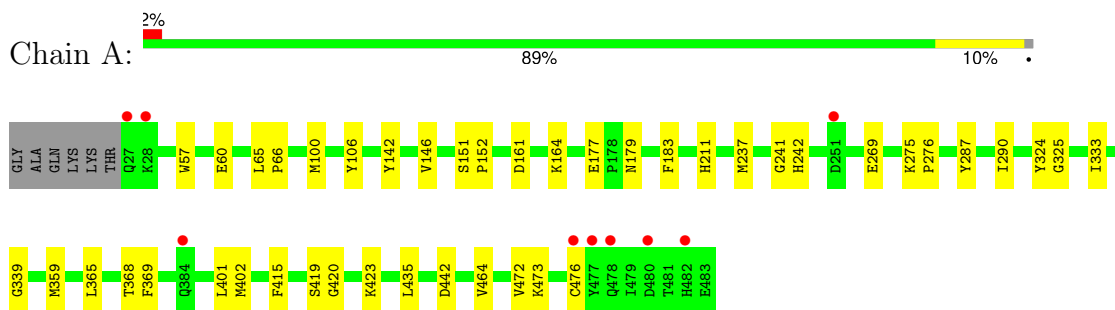
- Molecule 5 is water.

Mol	Chain	Residues	Atoms	ZeroOcc	AltConf
5	A	404	Total O 404 404	0	0
5	B	352	Total O 352 352	0	0
5	C	411	Total O 411 411	0	0
5	D	41	Total O 41 41	0	0

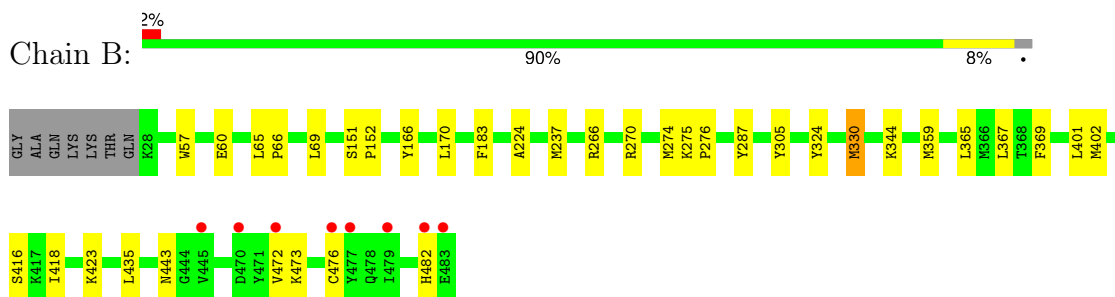
3 Residue-property plots [i](#)

These plots are drawn for all protein, RNA, DNA and oligosaccharide chains in the entry. The first graphic for a chain summarises the proportions of the various outlier classes displayed in the second graphic. The second graphic shows the sequence view annotated by issues in geometry and electron density. Residues are color-coded according to the number of geometric quality criteria for which they contain at least one outlier: green = 0, yellow = 1, orange = 2 and red = 3 or more. A red dot above a residue indicates a poor fit to the electron density ($RSRZ > 2$). Stretches of 2 or more consecutive residues without any outlier are shown as a green connector. Residues present in the sample, but not in the model, are shown in grey.

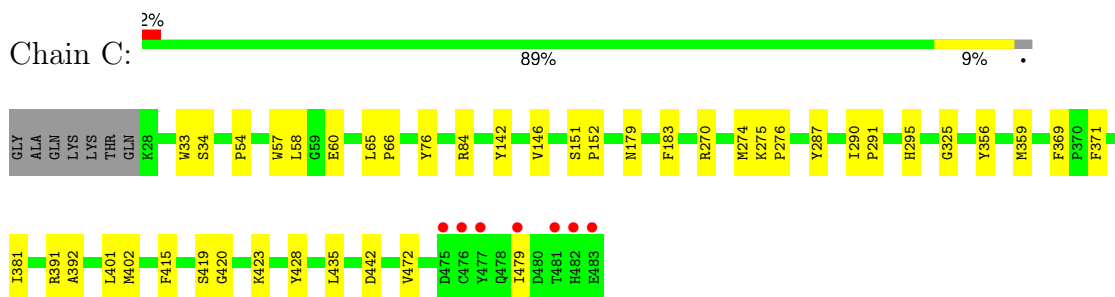
- Molecule 1: DUF4038 domain-containing protein



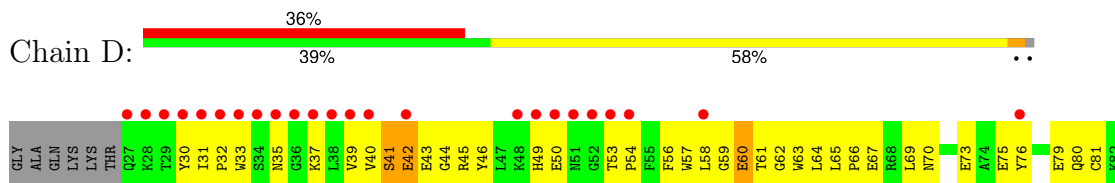
- Molecule 1: DUF4038 domain-containing protein

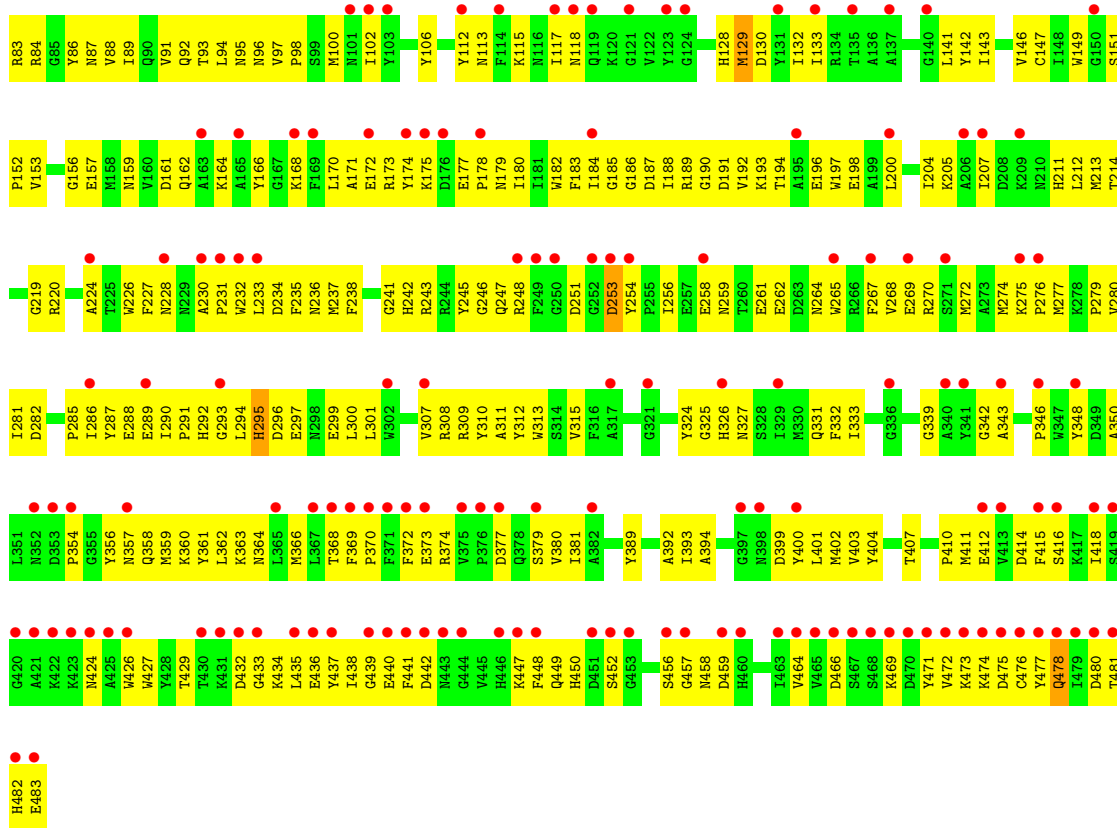


- Molecule 1: DUF4038 domain-containing protein



- Molecule 1: DUF4038 domain-containing protein





4 Data and refinement statistics

Property	Value	Source
Space group	H 3 2	Depositor
Cell constants a, b, c, α , β , γ	261.33Å 261.33Å 183.87Å 90.00° 90.00° 120.00°	Depositor
Resolution (Å)	85.18 – 2.10 85.18 – 2.10	Depositor EDS
% Data completeness (in resolution range)	100.0 (85.18-2.10) 100.0 (85.18-2.10)	Depositor EDS
R_{merge}	(Not available)	Depositor
R_{sym}	0.12	Depositor
$\langle I/\sigma(I) \rangle$ ¹	2.30 (at 2.10Å)	Xtrriage
Refinement program	REFMAC 5.5.0053	Depositor
R, R_{free}	0.185 , 0.222 0.186 , 0.220	Depositor DCC
R_{free} test set	6991 reflections (5.02%)	wwPDB-VP
Wilson B-factor (Å ²)	24.9	Xtrriage
Anisotropy	0.178	Xtrriage
Bulk solvent k_{sol} (e/Å ³), B_{sol} (Å ²)	0.36 , 58.0	EDS
L-test for twinning ²	$\langle L \rangle = 0.49$, $\langle L^2 \rangle = 0.32$	Xtrriage
Estimated twinning fraction	No twinning to report.	Xtrriage
F_o, F_c correlation	0.94	EDS
Total number of atoms	20249	wwPDB-VP
Average B, all atoms (Å ²)	27.0	wwPDB-VP

Xtrriage's analysis on translational NCS is as follows: *The largest off-origin peak in the Patterson function is 2.20% of the height of the origin peak. No significant pseudotranslation is detected.*

¹Intensities estimated from amplitudes.

²Theoretical values of $\langle |L| \rangle$, $\langle L^2 \rangle$ for acentric reflections are 0.5, 0.333 respectively for untwinned datasets, and 0.375, 0.2 for perfectly twinned datasets.

5 Model quality [i](#)

5.1 Standard geometry [i](#)

Bond lengths and bond angles in the following residue types are not validated in this section: MRD, SO4, MPD

The Z score for a bond length (or angle) is the number of standard deviations the observed value is removed from the expected value. A bond length (or angle) with $|Z| > 5$ is considered an outlier worth inspection. RMSZ is the root-mean-square of all Z scores of the bond lengths (or angles).

Mol	Chain	Bond lengths		Bond angles	
		RMSZ	# Z >5	RMSZ	# Z >5
1	A	0.87	0/3982	0.68	0/5363
1	B	0.84	1/3929 (0.0%)	0.67	0/5295
1	C	0.85	0/3941	0.68	1/5310 (0.0%)
1	D	0.35	0/7634	0.54	0/10294
All	All	0.70	1/19486 (0.0%)	0.63	1/26262 (0.0%)

All (1) bond length outliers are listed below:

Mol	Chain	Res	Type	Atoms	Z	Observed(Å)	Ideal(Å)
1	B	330	MSE	CB-CG	-5.14	1.37	1.52

All (1) bond angle outliers are listed below:

Mol	Chain	Res	Type	Atoms	Z	Observed(°)	Ideal(°)
1	C	34	SER	N-CA-C	-5.29	106.09	112.54

There are no chirality outliers.

There are no planarity outliers.

5.2 Too-close contacts [i](#)

In the following table, the Non-H and H(model) columns list the number of non-hydrogen atoms and hydrogen atoms in the chain respectively. The H(added) column lists the number of hydrogen atoms added and optimized by MolProbity. The Clashes column lists the number of clashes within the asymmetric unit, whereas Symm-Clashes lists symmetry-related clashes.

Mol	Chain	Non-H	H(model)	H(added)	Clashes	Symm-Clashes
1	A	3838	0	3621	36	0
1	B	3799	0	3573	29	0

Continued on next page...

Continued from previous page...

Mol	Chain	Non-H	H(model)	H(added)	Clashes	Symm-Clashes
1	C	3808	0	3586	29	0
1	D	7436	0	6920	398	0
2	A	30	0	0	0	0
2	B	25	0	0	0	0
2	C	25	0	0	1	0
3	A	24	0	42	5	0
3	B	24	0	42	7	0
3	C	16	0	28	4	0
4	C	16	0	28	5	0
5	A	404	0	0	2	0
5	B	352	0	0	0	0
5	C	411	0	0	2	0
5	D	41	0	0	4	0
All	All	20249	0	17840	505	0

The all-atom clashscore is defined as the number of clashes found per 1000 atoms (including hydrogen atoms). The all-atom clashscore for this structure is 14.

All (505) close contacts within the same asymmetric unit are listed below, sorted by their clash magnitude.

Atom-1	Atom-2	Interatomic distance (Å)	Clash overlap (Å)
3:A:485:MRD:HMC2	3:A:485:MRD:C5	1.50	1.40
3:A:485:MRD:H5C3	3:A:485:MRD:CM	1.51	1.36
1:D:42[A]:GLU:OE1	1:D:43[A]:GLU:N	1.63	1.32
1:D:65[A]:LEU:HD13	1:D:69[A]:LEU:HD12	1.31	1.12
1:D:65[A]:LEU:CD1	1:D:69[A]:LEU:HD12	1.81	1.10
1:D:359[A]:MSE:HA	1:D:359[A]:MSE:HE2	1.37	1.01
1:D:401[B]:LEU:HD11	1:D:464[B]:VAL:HB	1.42	1.01
1:D:42[A]:GLU:OE1	1:D:42[A]:GLU:C	2.04	0.99
1:D:435[A]:LEU:HD21	1:D:472[A]:VAL:HG11	1.42	0.99
1:D:359[B]:MSE:HE2	1:D:359[B]:MSE:HA	1.47	0.95
1:D:42[A]:GLU:OE1	1:D:43[A]:GLU:CA	2.15	0.94
1:D:370[A]:PRO:HB3	1:D:373[A]:GLU:OE2	1.70	0.92
1:D:185[B]:GLY:HA2	1:D:197[B]:TRP:CH2	2.05	0.92
1:B:344:LYS:HE3	3:C:484:MRD:HMC1	1.53	0.91
1:D:369[A]:PHE:CD1	1:D:402[A]:MSE:CE	2.54	0.91
1:D:401[A]:LEU:HD12	1:D:401[A]:LEU:O	1.72	0.90
1:D:354[A]:PRO:O	1:D:358[A]:GLN:HG3	1.74	0.88
1:D:401[B]:LEU:CD1	1:D:464[B]:VAL:HB	2.03	0.88
1:D:129[A]:MSE:HE3	1:D:129[A]:MSE:HA	1.55	0.88
1:D:168[A]:LYS:O	1:D:172[A]:GLU:HG2	1.75	0.87

Continued on next page...

Continued from previous page...

Atom-1	Atom-2	Interatomic distance (Å)	Clash overlap (Å)
1:D:477[A]:TYR:O	1:D:478[A]:GLN:HB3	1.75	0.86
1:D:149[A]:TRP:O	1:D:152[A]:PRO:HD2	1.77	0.85
1:D:369[B]:PHE:CD1	1:D:402[B]:MSE:CE	2.59	0.85
1:D:58[B]:LEU:HD11	1:D:359[B]:MSE:HB3	1.60	0.84
1:D:369[B]:PHE:CE1	1:D:402[B]:MSE:CE	2.60	0.83
1:D:129[B]:MSE:HE3	1:D:129[B]:MSE:HA	1.59	0.83
1:D:253[B]:ASP:OD1	1:D:254[B]:TYR:N	2.13	0.81
1:D:333[B]:ILE:HD11	1:D:339[B]:GLY:HA2	1.62	0.81
1:D:435[A]:LEU:O	1:D:477[A]:TYR:HA	1.81	0.80
1:D:275[B]:LYS:HA	1:D:276[B]:PRO:C	2.06	0.80
1:D:477[B]:TYR:C	1:D:478[B]:GLN:HG2	2.05	0.80
1:D:286[B]:ILE:HD13	1:D:310[B]:TYR:CE1	2.17	0.79
1:D:364[A]:ASN:HA	1:D:482[A]:HIS:CB	2.12	0.79
1:D:171[B]:ALA:O	1:D:175[B]:LYS:HB3	1.82	0.79
1:B:305:TYR:CE2	3:B:485:MRD:H1C1	2.18	0.78
1:D:41[A]:SER:HB3	1:D:43[A]:GLU:OE2	1.83	0.78
1:D:233[B]:LEU:C	1:D:233[B]:LEU:HD23	2.08	0.78
4:C:17:MPD:H52	4:C:17:MPD:HM1	1.64	0.78
1:D:435[A]:LEU:HD21	1:D:472[A]:VAL:CG1	2.14	0.78
1:D:369[B]:PHE:CD1	1:D:402[B]:MSE:HE3	2.19	0.77
3:A:485:MRD:HMC2	3:A:485:MRD:H5C3	0.78	0.77
1:D:65[A]:LEU:HD12	1:D:69[A]:LEU:HD12	1.68	0.76
1:D:185[B]:GLY:HA2	1:D:197[B]:TRP:CZ3	2.20	0.76
1:D:42[A]:GLU:OE1	1:D:43[A]:GLU:HA	1.87	0.73
1:D:212[B]:LEU:HA	1:D:234[B]:ASP:OD2	1.89	0.73
1:D:369[B]:PHE:CE1	1:D:402[B]:MSE:HE2	2.24	0.73
1:A:269:GLU:HG3	5:A:487:HOH:O	1.87	0.73
1:D:233[A]:LEU:C	1:D:233[A]:LEU:HD23	2.13	0.73
1:A:100:MSE:HE1	1:A:106:TYR:CE1	2.24	0.73
1:D:233[B]:LEU:HD21	1:D:235[B]:PHE:C	2.14	0.73
1:D:369[A]:PHE:CE1	1:D:402[A]:MSE:HE2	2.24	0.73
1:D:370[B]:PRO:HB3	1:D:373[B]:GLU:OE2	1.89	0.73
1:D:401[A]:LEU:HD12	1:D:401[A]:LEU:C	2.14	0.72
1:D:473[A]:LYS:HB2	1:D:476[A]:CYS:HB2	1.70	0.72
1:D:65[B]:LEU:CD1	1:D:69[B]:LEU:HD12	2.19	0.72
1:C:270:ARG:NH1	5:C:1146:HOH:O	2.23	0.72
1:D:159[A]:ASN:OD1	1:D:162[A]:GLN:HG3	1.90	0.72
1:D:435[B]:LEU:HD21	1:D:472[B]:VAL:HG11	1.71	0.71
1:C:419:SER:O	1:C:423:LYS:HE2	1.91	0.71
1:D:477[B]:TYR:O	1:D:478[B]:GLN:CB	2.39	0.71
1:D:292[B]:HIS:HD2	1:D:300[B]:LEU:O	1.74	0.71

Continued on next page...

Continued from previous page...

Atom-1	Atom-2	Interatomic distance (Å)	Clash overlap (Å)
1:C:415:PHE:O	1:C:423:LYS:NZ	2.24	0.71
1:D:183[B]:PHE:CE2	1:D:237[B]:MSE:HE1	2.24	0.71
1:D:435[B]:LEU:HD21	1:D:472[B]:VAL:CG1	2.21	0.70
1:D:401[B]:LEU:HD11	1:D:464[B]:VAL:CB	2.21	0.70
1:D:333[B]:ILE:CD1	1:D:339[B]:GLY:HA2	2.21	0.70
1:D:427[A]:TRP:NE1	1:D:438[A]:ILE:HD11	2.07	0.70
1:D:359[A]:MSE:HA	1:D:359[A]:MSE:CE	2.18	0.69
1:D:63[B]:TRP:HZ3	1:D:146[B]:VAL:HG21	1.57	0.69
1:D:270[A]:ARG:O	1:D:274[A]:MSE:HE3	1.91	0.69
1:D:282[B]:ASP:OD2	1:D:285[B]:PRO:HB3	1.93	0.68
1:D:287[A]:TYR:CD1	1:D:325[A]:GLY:HA3	2.29	0.68
1:D:196[A]:GLU:OE1	1:D:196[A]:GLU:N	2.25	0.68
1:D:427[A]:TRP:CD1	1:D:438[A]:ILE:HD11	2.28	0.68
1:D:205[B]:LYS:NZ	1:D:232[B]:TRP:O	2.27	0.67
1:D:69[A]:LEU:HD11	1:D:332[A]:PHE:CE1	2.29	0.67
1:D:369[A]:PHE:CE1	1:D:402[A]:MSE:CE	2.78	0.67
1:D:381[A]:ILE:HD13	1:D:392[A]:ALA:HB3	1.76	0.67
1:D:100[B]:MSE:HE1	1:D:106[B]:TYR:CE1	2.31	0.66
1:D:228[B]:ASN:ND2	1:D:274[B]:MSE:CB	2.59	0.66
1:A:415:PHE:O	1:A:423:LYS:NZ	2.28	0.66
1:D:161[A]:ASP:HA	1:D:164[A]:LYS:HE2	1.77	0.66
1:D:364[A]:ASN:ND2	1:D:481[A]:THR:HA	2.11	0.66
1:D:477[B]:TYR:O	1:D:478[B]:GLN:CG	2.44	0.65
1:D:288[A]:GLU:HG2	1:D:289[A]:GLU:HG2	1.77	0.65
1:D:194[B]:THR:O	1:D:198[B]:GLU:HG2	1.96	0.65
1:D:477[A]:TYR:O	1:D:478[A]:GLN:CB	2.45	0.65
1:D:219[A]:GLY:O	1:D:220[A]:ARG:HB2	1.96	0.65
1:D:200[A]:LEU:O	1:D:204[A]:ILE:HG13	1.97	0.64
1:D:133[B]:ILE:HD12	1:D:174[B]:TYR:CE1	2.32	0.64
1:D:172[A]:GLU:OE2	1:D:207[A]:ILE:HD13	1.97	0.64
1:D:142[A]:TYR:HA	1:D:179[A]:ASN:HB2	1.79	0.64
1:B:367:LEU:HD13	1:B:482[A]:HIS:ND1	2.13	0.64
1:D:291[A]:PRO:HA	1:D:301[A]:LEU:HD23	1.79	0.64
1:D:84[A]:ARG:HD2	1:D:356[A]:TYR:CE2	2.32	0.64
1:D:286[A]:ILE:HD13	1:D:310[A]:TYR:CE1	2.32	0.64
1:D:228[B]:ASN:ND2	1:D:274[B]:MSE:HB3	2.12	0.64
1:D:238[B]:PHE:CE1	1:D:282[B]:ASP:CG	2.76	0.63
1:D:35[B]:ASN:ND2	1:D:53[B]:THR:HG21	2.13	0.63
1:D:130[A]:ASP:OD2	1:D:173[A]:ARG:NH2	2.31	0.63
1:D:86[A]:TYR:O	1:D:141[A]:LEU:CD2	2.46	0.63
1:B:275:LYS:HA	1:B:276:PRO:C	2.24	0.63

Continued on next page...

Continued from previous page...

Atom-1	Atom-2	Interatomic distance (Å)	Clash overlap (Å)
1:D:60[B]:GLU:OE2	1:D:61[B]:THR:N	2.29	0.62
1:D:290[B]:ILE:CD1	1:D:294[B]:LEU:CD2	2.77	0.62
1:D:359[B]:MSE:HA	1:D:359[B]:MSE:CE	2.28	0.62
1:A:435:LEU:HD21	1:A:472:VAL:HG11	1.80	0.62
3:A:485:MRD:HMC2	3:A:485:MRD:H5C2	1.71	0.62
1:D:369[A]:PHE:CD1	1:D:402[A]:MSE:HE3	2.32	0.62
1:D:65[B]:LEU:HB3	1:D:66[B]:PRO:HD3	1.80	0.62
1:D:477[B]:TYR:O	1:D:478[B]:GLN:HG2	1.98	0.62
3:A:485:MRD:H5C3	3:A:485:MRD:HMC1	1.71	0.62
1:D:149[B]:TRP:CZ2	1:D:187[B]:ASP:HB2	2.34	0.62
1:D:363[A]:LYS:HE2	1:D:482[A]:HIS:O	2.00	0.62
1:D:437[B]:TYR:CZ	1:D:439[B]:GLY:HA2	2.35	0.62
1:D:149[A]:TRP:CZ2	1:D:187[A]:ASP:CB	2.83	0.62
1:D:172[B]:GLU:OE2	1:D:207[B]:ILE:HD13	2.00	0.62
1:B:65:LEU:HD13	1:B:69:LEU:HD12	1.82	0.61
1:D:275[A]:LYS:HA	1:D:276[A]:PRO:C	2.24	0.61
1:D:286[B]:ILE:CD1	1:D:310[B]:TYR:CE1	2.82	0.61
1:D:333[A]:ILE:HG13	1:D:343[A]:ALA:HB1	1.80	0.61
1:A:365:LEU:HD11	1:A:402:MSE:HE2	1.81	0.61
1:B:369:PHE:CE1	1:B:402:MSE:CE	2.82	0.61
1:D:475[B]:ASP:OD1	1:D:475[B]:ASP:O	2.17	0.61
1:D:362[A]:LEU:O	1:D:366[A]:MSE:HG2	2.00	0.61
1:D:113[B]:ASN:OD1	1:D:115[B]:LYS:CG	2.48	0.61
1:D:450[A]:HIS:CE1	1:D:452[A]:SER:HB3	2.36	0.61
1:D:171[A]:ALA:O	1:D:175[A]:LYS:HB3	2.01	0.61
1:D:42[A]:GLU:C	1:D:42[A]:GLU:CD	2.69	0.60
3:B:18:MRD:H1C1	3:B:18:MRD:H5C3	1.82	0.60
1:D:60[A]:GLU:OE2	1:D:61[A]:THR:N	2.34	0.60
1:D:228[B]:ASN:HD22	1:D:274[B]:MSE:HB3	1.65	0.60
1:D:290[B]:ILE:HD11	1:D:294[B]:LEU:CD2	2.31	0.60
1:D:477[B]:TYR:O	1:D:478[B]:GLN:HB3	2.01	0.60
1:C:391:ARG:HH21	4:C:485:MPD:H53	1.65	0.60
1:D:238[B]:PHE:CE1	1:D:282[B]:ASP:CB	2.85	0.60
1:D:424[A]:ASN:ND2	1:D:474[A]:LYS:HE2	2.17	0.60
1:D:149[A]:TRP:CZ2	1:D:187[A]:ASP:HB2	2.37	0.60
1:D:63[B]:TRP:HB3	1:D:92[B]:GLN:HG3	1.83	0.60
1:D:65[A]:LEU:N	1:D:66[A]:PRO:CD	2.64	0.60
1:A:435:LEU:HD21	1:A:472:VAL:CG1	2.31	0.60
1:D:414[B]:ASP:OD1	1:D:416[B]:SER:OG	2.18	0.60
1:A:275:LYS:HA	1:A:276:PRO:C	2.27	0.59
1:D:369[A]:PHE:CD1	1:D:402[A]:MSE:HE1	2.36	0.59

Continued on next page...

Continued from previous page...

Atom-1	Atom-2	Interatomic distance (Å)	Clash overlap (Å)
1:C:369:PHE:CD1	1:C:402:MSE:CE	2.85	0.59
1:D:190[B]:GLY:O	1:D:194[B]:THR:OG1	2.20	0.59
1:C:275:LYS:HA	1:C:276:PRO:C	2.28	0.59
1:D:46[B]:TYR:HE1	1:D:374[B]:ARG:NH2	2.00	0.59
1:D:142[B]:TYR:HA	1:D:179[B]:ASN:HB2	1.83	0.59
1:D:214[A]:THR:HB	1:D:235[A]:PHE:CZ	2.37	0.59
1:D:308[B]:ARG:HE	1:D:459[B]:ASP:CG	2.10	0.59
1:C:76:TYR:OH	3:C:484:MRD:H1C1	2.03	0.59
1:D:381[B]:ILE:HD13	1:D:392[B]:ALA:HB3	1.84	0.58
1:D:63[A]:TRP:HB3	1:D:92[A]:GLN:HG3	1.85	0.58
1:C:391:ARG:HE	4:C:485:MPD:H31	1.67	0.58
1:D:401[B]:LEU:HD12	1:D:401[B]:LEU:O	2.04	0.58
1:D:84[B]:ARG:CD	1:D:356[B]:TYR:CE2	2.86	0.58
1:D:42[B]:GLU:C	1:D:42[B]:GLU:CD	2.72	0.58
1:D:236[B]:ASN:ND2	5:D:584:HOH:O	2.35	0.57
1:D:65[B]:LEU:HD12	1:D:69[B]:LEU:HD12	1.85	0.57
1:D:180[A]:ILE:HB	1:D:211[A]:HIS:CD2	2.40	0.57
1:D:377[A]:ASP:OD1	1:D:379[A]:SER:OG	2.17	0.57
1:D:149[A]:TRP:O	1:D:152[A]:PRO:CD	2.51	0.56
1:D:185[B]:GLY:HA2	1:D:197[B]:TRP:CZ2	2.40	0.56
1:D:149[A]:TRP:CZ2	1:D:187[A]:ASP:HB3	2.41	0.56
1:D:151[B]:SER:HB2	1:D:152[B]:PRO:CD	2.35	0.56
1:D:228[B]:ASN:ND2	1:D:274[B]:MSE:HB2	2.21	0.56
1:D:435[A]:LEU:CD2	1:D:472[A]:VAL:CG1	2.83	0.56
1:A:369:PHE:CE1	1:A:402:MSE:CE	2.88	0.56
1:B:65:LEU:HB3	1:B:66:PRO:HD3	1.88	0.56
1:D:238[B]:PHE:CZ	1:D:282[B]:ASP:HB2	2.40	0.56
1:D:309[B]:ARG:O	1:D:313[B]:TRP:HB2	2.04	0.56
1:D:399[A]:ASP:OD2	1:D:469[A]:LYS:HG3	2.06	0.56
1:D:63[B]:TRP:CZ3	1:D:146[B]:VAL:HG21	2.38	0.56
1:B:369:PHE:CD1	1:B:402:MSE:CE	2.89	0.56
1:D:401[A]:LEU:HG	1:D:418[A]:ILE:HD13	1.88	0.56
1:D:168[A]:LYS:O	1:D:172[A]:GLU:CG	2.51	0.56
1:D:224[B]:ALA:O	1:D:228[B]:ASN:HB2	2.06	0.56
1:D:401[A]:LEU:C	1:D:401[A]:LEU:CD1	2.79	0.56
1:D:399[B]:ASP:OD2	1:D:471[B]:TYR:OH	2.23	0.55
1:B:305:TYR:CZ	3:B:485:MRD:H1C1	2.41	0.55
1:D:57[A]:TRP:CD1	1:D:57[A]:TRP:C	2.85	0.55
1:D:89[B]:ILE:HG22	1:D:91[B]:VAL:HG13	1.89	0.55
1:D:129[A]:MSE:HE3	1:D:132[A]:ILE:HD12	1.87	0.55
1:D:264[B]:ASN:HA	1:D:267[B]:PHE:CD2	2.42	0.55

Continued on next page...

Continued from previous page...

Atom-1	Atom-2	Interatomic distance (Å)	Clash overlap (Å)
4:C:485:MPD:H52	4:C:485:MPD:HM1	1.87	0.55
1:D:40[A]:VAL:HG23	5:D:756:HOH:O	2.06	0.55
1:D:117[A]:ILE:HG23	1:D:118[A]:ASN:OD1	2.06	0.55
4:C:17:MPD:H52	4:C:17:MPD:CM	2.35	0.55
1:D:70[A]:ASN:HB3	1:D:102[A]:ILE:HD13	1.89	0.55
1:D:364[A]:ASN:CG	1:D:481[A]:THR:HA	2.31	0.55
1:D:57[B]:TRP:CD1	1:D:57[B]:TRP:C	2.85	0.55
1:D:258[A]:GLU:O	1:D:259[A]:ASN:HB2	2.06	0.55
1:D:333[B]:ILE:CD1	1:D:339[B]:GLY:CA	2.84	0.55
1:D:429[A]:THR:OG1	1:D:432[A]:ASP:OD1	2.23	0.55
1:A:65:LEU:HB3	1:A:66:PRO:HD3	1.89	0.55
1:D:146[A]:VAL:HA	1:D:183[A]:PHE:HB2	1.89	0.54
1:C:435:LEU:HD21	1:C:472:VAL:HG11	1.89	0.54
1:D:100[A]:MSE:HE1	1:D:106[A]:TYR:CE1	2.42	0.54
1:D:287[B]:TYR:CD1	1:D:325[B]:GLY:HA3	2.41	0.54
1:D:459[B]:ASP:OD1	1:D:459[B]:ASP:N	2.41	0.54
1:A:419:SER:O	1:A:423:LYS:HE2	2.08	0.54
1:C:420:GLY:O	1:C:423:LYS:HE3	2.07	0.54
1:D:46[B]:TYR:HE1	1:D:374[B]:ARG:HH21	1.56	0.54
1:D:290[A]:ILE:HG12	1:D:291[A]:PRO:HD2	1.89	0.54
1:D:290[B]:ILE:HD11	1:D:294[B]:LEU:HD22	1.90	0.54
1:D:129[A]:MSE:HA	1:D:129[A]:MSE:CE	2.32	0.54
1:D:84[B]:ARG:HD2	1:D:356[B]:TYR:CE2	2.44	0.53
1:D:287[B]:TYR:O	1:D:290[B]:ILE:HG22	2.07	0.53
1:D:466[B]:ASP:HB3	1:D:469[B]:LYS:HG2	1.90	0.53
1:B:57:TRP:CD1	1:B:57:TRP:C	2.86	0.53
1:D:146[A]:VAL:HG22	1:D:183[A]:PHE:HB3	1.90	0.53
1:D:370[B]:PRO:HD3	1:D:471[B]:TYR:CE1	2.43	0.53
1:D:233[B]:LEU:C	1:D:233[B]:LEU:CD2	2.79	0.53
1:D:238[B]:PHE:HE1	1:D:282[B]:ASP:CG	2.16	0.53
1:D:292[B]:HIS:CD2	1:D:300[B]:LEU:HB2	2.43	0.53
1:D:40[B]:VAL:O	1:D:41[B]:SER:C	2.51	0.53
1:D:245[B]:TYR:HA	1:D:261[B]:GLU:OE1	2.09	0.53
1:D:92[B]:GLN:HA	1:D:146[B]:VAL:HB	1.91	0.53
1:D:394[A]:ALA:HB2	1:D:403[A]:VAL:HG22	1.91	0.53
1:D:403[A]:VAL:HG11	1:D:411[A]:MSE:SE	2.59	0.53
1:A:359:MSE:HA	1:A:359:MSE:HE2	1.91	0.52
1:C:442:ASP:C	1:C:442:ASP:OD1	2.52	0.52
1:A:473:LYS:HB2	1:A:476:CYS:HB2	1.91	0.52
1:D:185[B]:GLY:CA	1:D:197[B]:TRP:CZ3	2.92	0.52
1:D:331[A]:GLN:CD	1:D:333[A]:ILE:HD11	2.34	0.52

Continued on next page...

Continued from previous page...

Atom-1	Atom-2	Interatomic distance (Å)	Clash overlap (Å)
1:D:359[B]:MSE:HE2	1:D:359[B]:MSE:CA	2.31	0.52
1:D:466[A]:ASP:HB3	1:D:469[A]:LYS:HG2	1.91	0.52
1:D:79[A]:GLU:O	1:D:83[A]:ARG:HG3	2.09	0.52
1:D:401[B]:LEU:HD12	1:D:401[B]:LEU:C	2.35	0.52
1:D:57[B]:TRP:CZ2	1:D:88[B]:VAL:HG11	2.44	0.52
1:D:401[A]:LEU:HD11	1:D:464[A]:VAL:HB	1.90	0.52
1:D:369[A]:PHE:O	1:D:370[A]:PRO:C	2.53	0.52
1:D:41[B]:SER:HB3	1:D:43[B]:GLU:OE2	2.09	0.52
1:D:389[B]:TYR:O	1:D:407[B]:THR:HG23	2.10	0.52
1:C:65:LEU:HB3	1:C:66:PRO:HD3	1.92	0.52
1:D:228[B]:ASN:ND2	5:D:1115:HOH:O	2.42	0.52
1:D:84[A]:ARG:CD	1:D:356[A]:TYR:CE2	2.92	0.52
1:D:205[A]:LYS:HE3	1:D:213[A]:MSE:HE3	1.92	0.52
1:B:435:LEU:HD21	1:B:472:VAL:HG11	1.91	0.52
1:D:233[A]:LEU:HD21	1:D:235[A]:PHE:C	2.35	0.52
1:D:233[B]:LEU:HD23	1:D:235[B]:PHE:N	2.25	0.52
1:D:369[B]:PHE:O	1:D:370[B]:PRO:C	2.53	0.52
1:D:242[A]:HIS:ND1	1:D:286[A]:ILE:HA	2.25	0.51
1:D:87[B]:ASN:HA	1:D:141[B]:LEU:HD22	1.91	0.51
1:D:89[A]:ILE:HB	1:D:143[A]:ILE:HD13	1.93	0.51
1:A:100:MSE:HE1	1:A:106:TYR:CD1	2.45	0.51
1:D:171[B]:ALA:HB1	1:D:207[B]:ILE:HB	1.93	0.51
1:B:359:MSE:HE2	1:B:359:MSE:HA	1.93	0.51
1:D:427[B]:TRP:HB2	1:D:436[B]:GLU:HB3	1.92	0.51
1:D:233[A]:LEU:C	1:D:233[A]:LEU:CD2	2.83	0.51
1:D:67[A]:GLU:OE2	1:D:92[A]:GLN:O	2.29	0.51
1:D:146[A]:VAL:HG22	1:D:183[A]:PHE:CB	2.41	0.50
1:C:369:PHE:CE1	1:C:402:MSE:CE	2.94	0.50
1:D:40[B]:VAL:O	1:D:41[B]:SER:O	2.28	0.50
1:D:295[B]:HIS:O	1:D:296[B]:ASP:C	2.54	0.50
1:D:63[B]:TRP:HB3	1:D:92[B]:GLN:NE2	2.27	0.50
1:D:64[B]:LEU:HA	1:D:67[B]:GLU:OE1	2.10	0.50
1:D:333[B]:ILE:HD11	1:D:339[B]:GLY:CA	2.35	0.50
1:D:456[A]:SER:OG	1:D:458[A]:ASN:ND2	2.40	0.50
1:D:58[A]:LEU:HD11	1:D:359[A]:MSE:HB3	1.92	0.50
1:D:186[B]:GLY:H	1:D:188[B]:ILE:HG22	1.75	0.50
1:D:331[B]:GLN:HG3	1:D:333[B]:ILE:HG12	1.94	0.50
1:B:369:PHE:CD1	1:B:402:MSE:HE3	2.47	0.50
1:D:86[A]:TYR:O	1:D:141[A]:LEU:HD22	2.11	0.50
1:D:369[B]:PHE:CD1	1:D:402[B]:MSE:HE1	2.43	0.50
1:D:190[A]:GLY:HA3	1:D:226[A]:TRP:CD2	2.47	0.49

Continued on next page...

Continued from previous page...

Atom-1	Atom-2	Interatomic distance (Å)	Clash overlap (Å)
1:D:264[B]:ASN:HA	1:D:267[B]:PHE:HD2	1.76	0.49
1:D:427[B]:TRP:CD2	1:D:450[B]:HIS:HD2	2.30	0.49
1:D:41[B]:SER:OG	1:D:43[B]:GLU:OE1	2.24	0.49
1:D:233[B]:LEU:HD21	1:D:235[B]:PHE:O	2.11	0.49
1:D:292[B]:HIS:CD2	1:D:300[B]:LEU:O	2.60	0.49
1:A:287:TYR:CD1	1:A:325:GLY:HA3	2.48	0.49
1:D:95[A]:ASN:O	1:D:96[A]:ASN:ND2	2.45	0.49
1:D:192[B]:VAL:O	1:D:193[B]:LYS:HB2	2.12	0.49
1:D:214[A]:THR:HB	1:D:235[A]:PHE:CE2	2.47	0.49
1:D:293[B]:GLY:O	1:D:294[B]:LEU:HB2	2.12	0.49
1:D:456[B]:SER:OG	1:D:458[B]:ASN:ND2	2.45	0.49
1:D:164[B]:LYS:O	1:D:168[B]:LYS:HG3	2.13	0.49
1:D:346[A]:PRO:HB3	1:D:348[A]:TYR:CZ	2.48	0.49
1:D:333[A]:ILE:CD1	1:D:339[A]:GLY:HA3	2.43	0.49
1:B:401:LEU:C	1:B:401:LEU:HD12	2.38	0.49
1:C:401:LEU:C	1:C:401:LEU:HD12	2.38	0.49
1:A:420:GLY:O	1:A:423:LYS:HE3	2.13	0.49
1:D:189[A]:ARG:HB2	1:D:192[A]:VAL:HG23	1.94	0.49
1:D:333[A]:ILE:HD12	1:D:339[A]:GLY:HA3	1.95	0.49
1:B:224:ALA:HB1	1:B:274:MSE:HE3	1.95	0.48
1:D:146[A]:VAL:O	1:D:147[A]:CYS:C	2.56	0.48
1:D:238[B]:PHE:CE1	1:D:282[B]:ASP:HB2	2.48	0.48
1:D:364[A]:ASN:OD1	1:D:482[A]:HIS:N	2.30	0.48
1:D:76[B]:TYR:CE1	1:D:80[B]:GLN:NE2	2.82	0.48
1:D:184[B]:ILE:HG22	1:D:185[B]:GLY:N	2.27	0.48
1:D:373[B]:GLU:OE1	1:D:373[B]:GLU:N	2.47	0.48
1:D:153[B]:VAL:O	1:D:156[B]:GLY:N	2.44	0.48
1:C:369:PHE:CE1	1:C:402:MSE:HE2	2.49	0.48
1:D:213[A]:MSE:N	1:D:234[A]:ASP:OD2	2.46	0.48
1:D:227[A]:PHE:HB2	1:D:233[A]:LEU:CD1	2.44	0.48
1:B:435:LEU:HD21	1:B:472:VAL:CG1	2.44	0.48
1:D:94[B]:LEU:HD12	1:D:166[B]:TYR:CZ	2.49	0.48
1:D:112[B]:TYR:OH	1:D:157[B]:GLU:O	2.23	0.48
1:D:324[A]:TYR:CG	1:D:325[A]:GLY:N	2.81	0.48
1:D:359[A]:MSE:HE2	1:D:359[A]:MSE:CA	2.27	0.48
1:D:435[A]:LEU:HB3	1:D:478[A]:GLN:N	2.29	0.48
1:D:254[A]:TYR:CE2	1:D:256[A]:ILE:HG13	2.49	0.47
1:A:57:TRP:CD1	1:A:57:TRP:C	2.92	0.47
1:D:65[A]:LEU:N	1:D:66[A]:PRO:HD3	2.29	0.47
1:D:412[A]:GLU:HG2	1:D:447[A]:LYS:HB2	1.97	0.47
1:D:248[A]:ARG:CD	1:D:254[A]:TYR:CE1	2.97	0.47

Continued on next page...

Continued from previous page...

Atom-1	Atom-2	Interatomic distance (Å)	Clash overlap (Å)
1:D:33[B]:TRP:CH2	1:D:179[B]:ASN:HB3	2.50	0.47
1:D:194[B]:THR:O	1:D:198[B]:GLU:CG	2.62	0.47
1:D:373[A]:GLU:OE1	1:D:373[A]:GLU:N	2.45	0.47
1:D:437[B]:TYR:CE2	1:D:439[B]:GLY:HA2	2.49	0.47
1:D:84[A]:ARG:O	1:D:360[A]:LYS:HB3	2.14	0.47
1:D:326[B]:HIS:CE1	1:D:350[B]:ALA:HB1	2.50	0.47
1:D:432[B]:ASP:OD2	1:D:434[B]:LYS:HD2	2.14	0.47
1:A:142:TYR:HA	1:A:179:ASN:HB2	1.97	0.47
1:D:63[B]:TRP:HA	1:D:91[B]:VAL:HA	1.96	0.47
1:D:129[B]:MSE:HA	1:D:129[B]:MSE:CE	2.39	0.47
1:D:172[B]:GLU:OE1	1:D:172[B]:GLU:HA	2.14	0.47
1:C:57:TRP:CD1	1:C:57:TRP:C	2.93	0.47
1:D:33[B]:TRP:CZ3	1:D:179[B]:ASN:HB3	2.50	0.47
1:D:84[B]:ARG:NE	1:D:357[B]:ASN:OD1	2.39	0.46
1:D:251[B]:ASP:OD1	1:D:251[B]:ASP:O	2.33	0.46
1:C:381:ILE:HD13	1:C:392:ALA:HB3	1.98	0.46
1:D:415[B]:PHE:CZ	1:D:448[B]:PHE:CZ	3.04	0.46
1:D:151[A]:SER:N	1:D:152[A]:PRO:HD2	2.31	0.46
1:D:177[A]:GLU:O	1:D:211[A]:HIS:NE2	2.48	0.46
1:D:286[B]:ILE:CD1	1:D:310[B]:TYR:CD1	2.99	0.46
1:C:33:TRP:CH2	1:C:179:ASN:HB3	2.51	0.46
1:D:65[A]:LEU:HB3	1:D:66[A]:PRO:HD3	1.98	0.46
1:D:290[B]:ILE:HG12	1:D:291[B]:PRO:HD2	1.98	0.46
1:D:427[A]:TRP:CE2	1:D:438[A]:ILE:HD11	2.50	0.46
1:D:130[A]:ASP:OD1	1:D:174[A]:TYR:HE1	1.99	0.46
1:D:293[A]:GLY:O	1:D:294[A]:LEU:HB2	2.16	0.46
1:D:280[A]:VAL:HG22	1:D:281[A]:ILE:N	2.30	0.46
1:D:308[B]:ARG:NH2	1:D:457[B]:GLY:O	2.49	0.46
1:D:65[A]:LEU:HD12	1:D:69[A]:LEU:HB2	1.98	0.46
1:D:172[B]:GLU:CD	1:D:207[B]:ILE:HG21	2.41	0.46
1:D:173[B]:ARG:HD3	1:D:174[B]:TYR:CE2	2.51	0.46
1:D:312[A]:TYR:CE2	1:D:362[A]:LEU:HD13	2.51	0.46
1:D:70[A]:ASN:OD1	1:D:73[A]:GLU:HG3	2.15	0.46
1:D:153[B]:VAL:HG12	1:D:193[B]:LYS:HG3	1.97	0.46
1:D:164[A]:LYS:O	1:D:168[A]:LYS:HG3	2.16	0.46
1:D:265[A]:TRP:CZ3	1:D:269[A]:GLU:OE2	2.69	0.46
1:D:45[B]:ARG:NH1	5:D:1186:HOH:O	2.27	0.45
1:D:76[B]:TYR:O	1:D:80[B]:GLN:HG2	2.15	0.45
1:A:161:ASP:HA	1:A:164[A]:LYS:CE	2.47	0.45
1:C:435:LEU:HD21	1:C:472:VAL:CG1	2.45	0.45
1:A:369:PHE:CE1	1:A:402:MSE:HE3	2.51	0.45

Continued on next page...

Continued from previous page...

Atom-1	Atom-2	Interatomic distance (Å)	Clash overlap (Å)
1:D:65[A]:LEU:HD13	1:D:69[A]:LEU:CD1	2.22	0.45
1:D:290[B]:ILE:HD13	1:D:294[B]:LEU:HD21	1.98	0.45
1:D:238[B]:PHE:CE1	1:D:282[B]:ASP:OD1	2.70	0.45
1:D:414[B]:ASP:CG	1:D:416[B]:SER:HG	2.20	0.45
1:D:59[B]:GLY:HA2	1:D:88[B]:VAL:O	2.16	0.45
1:D:288[A]:GLU:HB2	1:D:307[A]:VAL:HG21	1.97	0.45
1:D:297[B]:GLU:HG3	1:D:342[B]:GLY:HA3	1.99	0.45
1:D:414[B]:ASP:OD1	1:D:414[B]:ASP:C	2.58	0.45
1:D:246[B]:GLY:N	1:D:261[B]:GLU:OE1	2.45	0.45
1:D:248[B]:ARG:CZ	1:D:254[B]:TYR:CD1	3.00	0.45
1:A:183:PHE:CE2	1:A:237:MSE:HE1	2.52	0.45
1:A:333:ILE:HD11	1:A:339:GLY:HA3	1.99	0.45
1:C:151:SER:HB2	1:C:152:PRO:CD	2.47	0.45
1:D:133[A]:ILE:HG21	1:D:180[A]:ILE:HD11	1.99	0.45
1:D:170[B]:LEU:HB3	1:D:182[B]:TRP:CH2	2.52	0.45
1:D:410[B]:PRO:HG3	1:D:449[B]:GLN:CD	2.42	0.45
5:A:739:HOH:O	3:B:485:MRD:H5C1	2.16	0.45
1:C:84:ARG:CD	1:C:356:TYR:CE2	3.00	0.44
1:D:97[A]:VAL:HB	1:D:157[A]:GLU:OE1	2.17	0.44
1:D:248[B]:ARG:HD3	1:D:254[B]:TYR:CZ	2.52	0.44
1:A:401:LEU:C	1:A:401:LEU:HD12	2.42	0.44
1:B:344:LYS:CE	3:C:484:MRD:HMC1	2.35	0.44
1:D:41[A]:SER:CB	1:D:43[A]:GLU:OE2	2.59	0.44
1:D:75[A]:GLU:C	1:D:75[A]:GLU:OE1	2.60	0.44
1:D:369[A]:PHE:HD1	1:D:402[A]:MSE:HE1	1.80	0.44
1:D:180[A]:ILE:HB	1:D:211[A]:HIS:NE2	2.33	0.44
1:D:183[A]:PHE:CE2	1:D:237[A]:MSE:HE1	2.53	0.44
1:D:46[A]:TYR:OH	1:D:374[A]:ARG:O	2.25	0.44
1:D:238[B]:PHE:CE1	1:D:282[B]:ASP:HA	2.53	0.44
1:D:288[A]:GLU:O	1:D:289[A]:GLU:HB2	2.16	0.44
1:D:450[A]:HIS:ND1	1:D:452[A]:SER:OG	2.30	0.44
1:A:146:VAL:HA	1:A:183:PHE:HB2	2.00	0.44
1:C:58:LEU:HD11	1:C:359:MSE:HB3	2.00	0.44
1:D:86[A]:TYR:O	1:D:141[A]:LEU:HD21	2.18	0.44
1:D:149[B]:TRP:O	1:D:152[B]:PRO:HG2	2.18	0.44
1:D:370[B]:PRO:HB2	1:D:400[B]:TYR:HE1	1.83	0.44
1:D:296[B]:ASP:HB3	1:D:299[B]:GLU:HG2	1.99	0.44
1:B:416:SER:HA	1:B:443:ASN:OD1	2.18	0.44
1:C:146:VAL:HA	1:C:183:PHE:HB2	1.99	0.44
1:C:295:HIS:NE2	2:C:1:SO4:O3	2.50	0.44
1:A:151:SER:HB2	1:A:152:PRO:CD	2.48	0.43

Continued on next page...

Continued from previous page...

Atom-1	Atom-2	Interatomic distance (Å)	Clash overlap (Å)
1:B:65:LEU:CD1	1:B:69:LEU:HD12	2.46	0.43
1:D:241[A]:GLY:HA2	1:D:242[A]:HIS:HA	1.73	0.43
1:D:268[B]:VAL:O	1:D:272[B]:MSE:HG3	2.17	0.43
1:D:288[B]:GLU:HG2	1:D:289[B]:GLU:HG2	2.00	0.43
1:D:290[B]:ILE:CD1	1:D:294[B]:LEU:HD21	2.48	0.43
3:B:485:MRD:H5C3	3:B:485:MRD:HMC1	2.00	0.43
1:D:44[B]:GLY:O	1:D:277[B]:MSE:HE3	2.19	0.43
1:D:97[A]:VAL:HA	1:D:98[A]:PRO:HA	1.73	0.43
1:D:87[B]:ASN:HA	1:D:141[B]:LEU:CD2	2.48	0.43
1:D:130[A]:ASP:OD1	1:D:174[A]:TYR:CE1	2.72	0.43
1:D:177[B]:GLU:O	1:D:211[B]:HIS:NE2	2.50	0.43
1:D:189[B]:ARG:NH2	1:D:191[B]:ASP:OD2	2.43	0.43
1:D:280[B]:VAL:HG22	1:D:281[B]:ILE:N	2.33	0.43
1:C:54:PRO:HB3	1:C:371:PHE:CD2	2.53	0.43
1:D:254[A]:TYR:CE2	1:D:256[A]:ILE:CG1	3.02	0.43
1:A:368:THR:O	1:A:368:THR:HG22	2.18	0.43
1:D:65[B]:LEU:N	1:D:66[B]:PRO:CD	2.81	0.43
1:A:100:MSE:HE2	1:A:100:MSE:HB2	1.75	0.43
1:D:146[B]:VAL:HA	1:D:183[B]:PHE:HB2	2.01	0.43
1:D:327[B]:ASN:O	1:D:331[B]:GLN:HG2	2.19	0.43
1:D:370[A]:PRO:HB2	1:D:400[A]:TYR:HE1	1.84	0.43
1:D:374[B]:ARG:HB2	1:D:400[B]:TYR:OH	2.18	0.43
1:D:459[A]:ASP:OD1	1:D:459[A]:ASP:N	2.51	0.43
1:B:166:TYR:CZ	1:B:170:LEU:HD11	2.54	0.43
1:B:183:PHE:CE2	1:B:237:MSE:HE1	2.53	0.43
1:D:324[B]:TYR:CD1	1:D:324[B]:TYR:C	2.96	0.43
1:D:227[A]:PHE:HB2	1:D:233[A]:LEU:HD12	2.01	0.43
1:D:380[B]:VAL:HB	1:D:394[B]:ALA:CB	2.49	0.43
1:D:151[B]:SER:HB2	1:D:152[B]:PRO:HD3	2.00	0.43
1:D:166[B]:TYR:CE2	1:D:170[B]:LEU:HD11	2.54	0.43
1:A:177:GLU:O	1:A:211:HIS:NE2	2.52	0.42
3:B:485:MRD:HMC1	3:B:485:MRD:C5	2.49	0.42
1:C:428:TYR:CE1	1:C:479:ILE:HD12	2.54	0.42
1:D:63[A]:TRP:HZ3	1:D:146[A]:VAL:HG21	1.85	0.42
1:D:97[B]:VAL:HA	1:D:98[B]:PRO:HA	1.76	0.42
1:A:241:GLY:HA2	1:A:242:HIS:HA	1.89	0.42
1:D:128[A]:HIS:O	1:D:132[A]:ILE:HG13	2.20	0.42
1:D:149[A]:TRP:O	1:D:152[A]:PRO:CG	2.67	0.42
1:D:243[A]:ARG:HD3	1:D:247[A]:GLN:O	2.19	0.42
1:D:296[A]:ASP:HB3	1:D:299[A]:GLU:CG	2.49	0.42
1:D:179[B]:ASN:O	1:D:180[B]:ILE:HD13	2.19	0.42

Continued on next page...

Continued from previous page...

Atom-1	Atom-2	Interatomic distance (Å)	Clash overlap (Å)
1:D:212[B]:LEU:HD22	1:D:234[B]:ASP:CG	2.44	0.42
1:D:426[A]:TRP:CD1	1:D:437[A]:TYR:HA	2.55	0.42
1:A:324:TYR:CD1	1:A:324:TYR:C	2.97	0.42
1:D:56[B]:PHE:CE1	1:D:366[B]:MSE:HG3	2.54	0.42
1:D:95[B]:ASN:O	1:D:96[B]:ASN:ND2	2.52	0.42
1:C:287:TYR:CD1	1:C:325:GLY:HA3	2.55	0.42
1:D:311[B]:ALA:HB1	1:D:362[B]:LEU:HD22	2.02	0.42
1:D:315[A]:VAL:HG21	1:D:362[A]:LEU:HD21	2.00	0.42
1:B:418:ILE:O	1:B:423:LYS:NZ	2.53	0.42
1:D:39[B]:VAL:HG12	1:D:40[B]:VAL:N	2.35	0.42
1:D:333[B]:ILE:HD12	1:D:339[B]:GLY:CA	2.50	0.42
1:D:401[B]:LEU:HD11	1:D:464[B]:VAL:CG2	2.50	0.42
1:A:369:PHE:CD1	1:A:402:MSE:HE3	2.55	0.42
1:B:473:LYS:HB2	1:B:476:CYS:SG	2.60	0.42
1:D:161[B]:ASP:HA	1:D:164[B]:LYS:HE2	2.02	0.42
1:D:415[B]:PHE:HZ	1:D:448[B]:PHE:CZ	2.38	0.42
1:C:290:ILE:HG12	1:C:291:PRO:HD2	2.01	0.42
1:D:361[B]:TYR:CD1	1:D:433[B]:GLY:HA3	2.54	0.42
1:B:324:TYR:CD1	1:B:324:TYR:C	2.97	0.41
1:D:75[A]:GLU:C	1:D:75[A]:GLU:CD	2.89	0.41
1:D:230[B]:ALA:HA	1:D:231[B]:PRO:HD3	1.87	0.41
1:D:30[B]:TYR:CG	1:D:483[B]:GLU:HB2	2.55	0.41
1:D:62[B]:GLY:O	1:D:91[B]:VAL:HG12	2.20	0.41
1:D:324[B]:TYR:CG	1:D:325[B]:GLY:N	2.89	0.41
1:D:354[A]:PRO:O	1:D:358[A]:GLN:CG	2.57	0.41
1:D:440[A]:GLU:C	1:D:441[A]:PHE:CD1	2.98	0.41
1:D:60[A]:GLU:HG3	1:D:81[A]:CYS:SG	2.60	0.41
1:D:149[A]:TRP:CH2	1:D:187[A]:ASP:HB2	2.54	0.41
1:D:212[B]:LEU:CA	1:D:234[B]:ASP:OD2	2.64	0.41
1:D:308[B]:ARG:NH2	1:D:459[B]:ASP:OD1	2.53	0.41
1:D:130[B]:ASP:OD2	1:D:173[B]:ARG:NH2	2.51	0.41
1:A:401:LEU:HG	1:A:464:VAL:HB	2.03	0.41
1:B:266:ARG:O	1:B:270:ARG:HG3	2.21	0.41
1:B:365:LEU:HD11	1:B:402:MSE:HE2	2.02	0.41
1:D:31[A]:ILE:HA	1:D:32[A]:PRO:HD3	1.92	0.41
1:D:247[B]:GLN:NE2	1:D:292[B]:HIS:O	2.39	0.41
1:D:43[A]:GLU:N	1:D:43[A]:GLU:CD	2.79	0.41
1:D:130[B]:ASP:OD1	1:D:174[B]:TYR:OH	2.30	0.41
1:B:305:TYR:CD2	3:B:485:MRD:H1C1	2.55	0.41
1:D:245[B]:TYR:CZ	1:D:262[B]:GLU:HB2	2.56	0.41
1:D:437[A]:TYR:CZ	1:D:439[A]:GLY:HA2	2.55	0.41

Continued on next page...

Continued from previous page...

Atom-1	Atom-2	Interatomic distance (Å)	Clash overlap (Å)
1:D:480[A]:ASP:O	1:D:481[A]:THR:C	2.63	0.41
1:A:365:LEU:HD11	1:A:402:MSE:CE	2.49	0.41
1:A:369:PHE:CD1	1:A:402:MSE:CE	3.04	0.41
1:C:142:TYR:HA	1:C:179:ASN:HB2	2.03	0.41
3:C:20:MRD:H3C1	5:C:1059:HOH:O	2.21	0.41
1:D:69[B]:LEU:HD22	1:D:73[B]:GLU:HB3	2.03	0.41
1:D:92[A]:GLN:O	1:D:93[A]:THR:C	2.64	0.41
1:D:177[B]:GLU:HA	1:D:178[B]:PRO:HD2	1.88	0.41
1:D:296[A]:ASP:HB3	1:D:299[A]:GLU:HG2	2.02	0.41
1:D:241[B]:GLY:HA2	1:D:242[B]:HIS:HA	1.82	0.41
1:D:393[A]:ILE:CG2	1:D:404[A]:TYR:HB3	2.51	0.41
1:D:393[A]:ILE:HG22	1:D:404[A]:TYR:HB3	2.02	0.41
1:D:45[A]:ARG:O	1:D:279[A]:PRO:HB3	2.21	0.40
1:D:164[A]:LYS:HE3	1:D:164[A]:LYS:HB2	1.88	0.40
1:D:377[B]:ASP:OD1	1:D:379[B]:SER:OG	2.26	0.40
1:D:311[B]:ALA:O	1:D:315[B]:VAL:HG23	2.22	0.40
1:A:333:ILE:HD11	1:A:339:GLY:CA	2.51	0.40
1:A:442:ASP:OD1	1:A:442:ASP:C	2.64	0.40
1:B:151:SER:HB2	1:B:152:PRO:CD	2.52	0.40
1:B:287:TYR:CE2	1:B:330:MSE:HG3	2.56	0.40
1:D:37[B]:LYS:O	1:D:49[B]:HIS:HA	2.22	0.40
1:D:168[B]:LYS:O	1:D:172[B]:GLU:HG2	2.21	0.40
1:D:248[B]:ARG:CD	1:D:254[B]:TYR:CZ	3.04	0.40
1:D:248[A]:ARG:CZ	1:D:254[A]:TYR:CD1	3.04	0.40
1:D:331[A]:GLN:OE1	1:D:333[A]:ILE:HD11	2.22	0.40
1:D:415[B]:PHE:CD2	1:D:464[B]:VAL:HG11	2.57	0.40
1:A:287:TYR:O	1:A:290:ILE:HG22	2.22	0.40
1:D:37[A]:LYS:HG2	1:D:50[A]:GLU:OE1	2.22	0.40
1:D:42[A]:GLU:C	1:D:44[A]:GLY:N	2.77	0.40
1:D:54[A]:PRO:HG3	1:D:372[A]:PHE:CE2	2.56	0.40
1:D:65[B]:LEU:HD13	1:D:69[B]:LEU:HD12	2.03	0.40
1:D:368[A]:THR:O	1:D:368[A]:THR:HG22	2.22	0.40
1:D:370[A]:PRO:CB	1:D:373[A]:GLU:OE2	2.56	0.40
1:D:424[A]:ASN:O	1:D:464[A]:VAL:HG13	2.22	0.40

There are no symmetry-related clashes.

5.3 Torsion angles [i](#)

5.3.1 Protein backbone [i](#)

In the following table, the Percentiles column shows the percent Ramachandran outliers of the chain as a percentile score with respect to all X-ray entries followed by that with respect to entries of similar resolution.

The Analysed column shows the number of residues for which the backbone conformation was analysed, and the total number of residues.

Mol	Chain	Analysed	Favoured	Allowed	Outliers	Percentiles	
1	A	469/463 (101%)	452 (96%)	17 (4%)	0	100	100
1	B	463/463 (100%)	444 (96%)	19 (4%)	0	100	100
1	C	464/463 (100%)	444 (96%)	20 (4%)	0	100	100
1	D	910/463 (196%)	834 (92%)	66 (7%)	10 (1%)	12	8
All	All	2306/1852 (124%)	2174 (94%)	122 (5%)	10 (0%)	37	29

All (10) Ramachandran outliers are listed below:

Mol	Chain	Res	Type
1	D	41[A]	SER
1	D	41[B]	SER
1	D	295[A]	HIS
1	D	295[B]	HIS
1	D	478[A]	GLN
1	D	478[B]	GLN
1	D	253[A]	ASP
1	D	253[B]	ASP
1	D	442[A]	ASP
1	D	442[B]	ASP

5.3.2 Protein sidechains [i](#)

In the following table, the Percentiles column shows the percent sidechain outliers of the chain as a percentile score with respect to all X-ray entries followed by that with respect to entries of similar resolution.

The Analysed column shows the number of residues for which the sidechain conformation was analysed, and the total number of residues.

Mol	Chain	Analysed	Rotameric	Outliers	Percentiles	
1	A	401/380 (106%)	400 (100%)	1 (0%)	92	95

Continued on next page...

Continued from previous page...

Mol	Chain	Analysed	Rotameric	Outliers	Percentiles	
1	B	395/380 (104%)	394 (100%)	1 (0%)	91	94
1	C	396/380 (104%)	394 (100%)	2 (0%)	86	91
1	D	758/380 (200%)	752 (99%)	6 (1%)	79	84
All	All	1950/1520 (128%)	1940 (100%)	10 (0%)	86	91

All (10) residues with a non-rotameric sidechain are listed below:

Mol	Chain	Res	Type
1	A	60	GLU
1	B	60	GLU
1	C	60	GLU
1	C	274	MSE
1	D	42[A]	GLU
1	D	42[B]	GLU
1	D	60[A]	GLU
1	D	60[B]	GLU
1	D	129[A]	MSE
1	D	129[B]	MSE

Sometimes sidechains can be flipped to improve hydrogen bonding and reduce clashes. All (9) such sidechains are listed below:

Mol	Chain	Res	Type
1	A	236	ASN
1	A	295	HIS
1	A	327	ASN
1	B	210	ASN
1	C	116	ASN
1	C	210	ASN
1	C	236	ASN
1	C	298	ASN
1	C	458	ASN

5.3.3 RNA [i](#)

There are no RNA molecules in this entry.

5.4 Non-standard residues in protein, DNA, RNA chains [i](#)

There are no non-standard protein/DNA/RNA residues in this entry.

5.5 Carbohydrates [i](#)

There are no oligosaccharides in this entry.

5.6 Ligand geometry [i](#)

26 ligands are modelled in this entry.

In the following table, the Counts columns list the number of bonds (or angles) for which Mogul statistics could be retrieved, the number of bonds (or angles) that are observed in the model and the number of bonds (or angles) that are defined in the Chemical Component Dictionary. The Link column lists molecule types, if any, to which the group is linked. The Z score for a bond length (or angle) is the number of standard deviations the observed value is removed from the expected value. A bond length (or angle) with $|Z| > 2$ is considered an outlier worth inspection. RMSZ is the root-mean-square of all Z scores of the bond lengths (or angles).

Mol	Type	Chain	Res	Link	Bond lengths			Bond angles		
					Counts	RMSZ	$\# Z > 2$	Counts	RMSZ	$\# Z > 2$
2	SO4	A	12	-	4,4,4	0.25	0	6,6,6	0.09	0
2	SO4	C	14	-	4,4,4	0.20	0	6,6,6	0.12	0
2	SO4	C	4	-	4,4,4	0.22	0	6,6,6	0.12	0
2	SO4	A	9	-	4,4,4	0.18	0	6,6,6	0.11	0
3	MRD	A	19	-	7,7,7	0.51	0	9,10,10	0.17	0
2	SO4	B	13	-	4,4,4	0.24	0	6,6,6	0.12	0
3	MRD	C	20	-	7,7,7	0.57	0	9,10,10	0.23	0
3	MRD	C	484	-	7,7,7	0.30	0	9,10,10	0.31	0
2	SO4	A	15	-	4,4,4	1.36	0	6,6,6	0.30	0
3	MRD	B	18	-	7,7,7	0.50	0	9,10,10	0.30	0
2	SO4	C	11	-	4,4,4	0.31	0	6,6,6	0.11	0
2	SO4	B	7	-	4,4,4	0.27	0	6,6,6	0.11	0
2	SO4	A	3	-	4,4,4	0.21	0	6,6,6	0.16	0
3	MRD	B	484	-	7,7,7	0.38	0	9,10,10	0.25	0
2	SO4	B	16	-	4,4,4	0.29	0	6,6,6	0.12	0
2	SO4	C	1	-	4,4,4	0.22	0	6,6,6	0.08	0
2	SO4	B	2	-	4,4,4	0.25	0	6,6,6	0.09	0
3	MRD	A	484	-	7,7,7	0.45	0	9,10,10	0.13	0
4	MPD	C	485	-	7,7,7	0.43	0	9,10,10	0.12	0
2	SO4	B	10	-	4,4,4	0.19	0	6,6,6	0.12	0
2	SO4	A	5	-	4,4,4	0.23	0	6,6,6	0.11	0
2	SO4	A	6	-	4,4,4	0.23	0	6,6,6	0.12	0
2	SO4	C	8	-	4,4,4	0.27	0	6,6,6	0.10	0
3	MRD	B	485	-	7,7,7	0.37	0	9,10,10	0.20	0
4	MPD	C	17	-	7,7,7	0.43	0	9,10,10	0.28	0
3	MRD	A	485	-	7,7,7	0.48	0	9,10,10	0.19	0

In the following table, the Chirals column lists the number of chiral outliers, the number of chiral centers analysed, the number of these observed in the model and the number defined in the Chemical Component Dictionary. Similar counts are reported in the Torsion and Rings columns. '-' means no outliers of that kind were identified.

Mol	Type	Chain	Res	Link	Chirals	Torsions	Rings
3	MRD	A	19	-	-	3/5/5/5	-
3	MRD	C	20	-	-	0/5/5/5	-
3	MRD	C	484	-	-	2/5/5/5	-
3	MRD	B	485	-	-	3/5/5/5	-
3	MRD	B	18	-	-	4/5/5/5	-
3	MRD	A	484	-	-	0/5/5/5	-
4	MPD	C	17	-	-	4/5/5/5	-
4	MPD	C	485	-	-	4/5/5/5	-
3	MRD	B	484	-	-	0/5/5/5	-
3	MRD	A	485	-	-	4/5/5/5	-

There are no bond length outliers.

There are no bond angle outliers.

There are no chirality outliers.

All (24) torsion outliers are listed below:

Mol	Chain	Res	Type	Atoms
3	A	485	MRD	CM-C2-C3-C4
3	A	485	MRD	C2-C3-C4-O4
3	A	485	MRD	C2-C3-C4-C5
3	B	18	MRD	C2-C3-C4-O4
3	B	18	MRD	C2-C3-C4-C5
3	C	484	MRD	C2-C3-C4-O4
3	C	484	MRD	C2-C3-C4-C5
4	C	17	MPD	CM-C2-C3-C4
4	C	17	MPD	C2-C3-C4-O4
4	C	17	MPD	C2-C3-C4-C5
4	C	485	MPD	C2-C3-C4-O4
4	C	485	MPD	C2-C3-C4-C5
3	A	19	MRD	CM-C2-C3-C4
3	A	485	MRD	C1-C2-C3-C4
3	B	485	MRD	C1-C2-C3-C4
4	C	17	MPD	C1-C2-C3-C4
4	C	485	MPD	CM-C2-C3-C4
3	A	19	MRD	C2-C3-C4-C5
3	B	485	MRD	O2-C2-C3-C4

Continued on next page...

Continued from previous page...

Mol	Chain	Res	Type	Atoms
3	A	19	MRD	C1-C2-C3-C4
3	B	18	MRD	C1-C2-C3-C4
3	B	18	MRD	CM-C2-C3-C4
3	B	485	MRD	CM-C2-C3-C4
4	C	485	MPD	C1-C2-C3-C4

There are no ring outliers.

8 monomers are involved in 22 short contacts:

Mol	Chain	Res	Type	Clashes	Symm-Clashes
3	C	20	MRD	1	0
3	C	484	MRD	3	0
3	B	18	MRD	1	0
2	C	1	SO4	1	0
4	C	485	MPD	3	0
3	B	485	MRD	6	0
4	C	17	MPD	2	0
3	A	485	MRD	5	0

5.7 Other polymers [i](#)

There are no such residues in this entry.

5.8 Polymer linkage issues [i](#)

There are no chain breaks in this entry.

6 Fit of model and data [i](#)

6.1 Protein, DNA and RNA chains [i](#)

In the following table, the column labelled ‘#RSRZ > 2’ contains the number (and percentage) of RSRZ outliers, followed by percent RSRZ outliers for the chain as percentile scores relative to all X-ray entries and entries of similar resolution. The OWAB column contains the minimum, median, 95th percentile and maximum values of the occupancy-weighted average B-factor per residue. The column labelled ‘Q < 0.9’ lists the number of (and percentage) of residues with an average occupancy less than 0.9.

Mol	Chain	Analysed	<RSRZ>	#RSRZ>2	OWAB(Å ²)	Q<0.9
1	A	442/463 (95%)	-0.36	9 (2%) 64 66	11, 20, 38, 55	14 (3%)
1	B	441/463 (95%)	-0.18	8 (1%) 67 69	13, 23, 42, 60	9 (2%)
1	C	441/463 (95%)	-0.42	7 (1%) 70 71	10, 20, 36, 57	10 (2%)
1	D	442/463 (95%)	1.85	167 (37%) 1 1	13, 16, 21, 30	442 (100%)
All	All	1766/1852 (95%)	0.23	191 (10%) 12 13	10, 19, 37, 60	475 (26%)

All (191) RSRZ outliers are listed below:

Mol	Chain	Res	Type	RSRZ
1	D	382[A]	ALA	6.8
1	D	482[A]	HIS	6.5
1	D	479[A]	ILE	6.4
1	D	471[A]	TYR	5.7
1	D	477[A]	TYR	5.5
1	D	443[A]	ASN	5.1
1	D	419[A]	SER	5.1
1	B	477[A]	TYR	4.9
1	B	482[A]	HIS	4.8
1	C	477[A]	TYR	4.6
1	D	474[A]	LYS	4.6
1	D	418[A]	ILE	4.5
1	D	465[A]	VAL	4.5
1	A	482[A]	HIS	4.4
1	D	375[A]	VAL	4.4
1	D	317[A]	ALA	4.4
1	D	480[A]	ASP	4.4
1	D	253[A]	ASP	4.4
1	D	433[A]	GLY	4.3
1	D	439[A]	GLY	4.3
1	C	476	CYS	4.3

Continued on next page...

Continued from previous page...

Mol	Chain	Res	Type	RSRZ
1	D	397[A]	GLY	4.3
1	D	343[A]	ALA	4.2
1	D	423[A]	LYS	4.2
1	D	230[A]	ALA	4.2
1	D	207[A]	ILE	4.2
1	D	37[A]	LYS	4.2
1	D	289[A]	GLU	4.1
1	D	30[A]	TYR	4.1
1	D	39[A]	VAL	4.1
1	D	165[A]	ALA	4.1
1	D	475[A]	ASP	4.1
1	D	469[A]	LYS	4.0
1	D	372[A]	PHE	4.0
1	D	476[A]	CYS	4.0
1	D	441[A]	PHE	4.0
1	D	472[A]	VAL	4.0
1	D	473[A]	LYS	4.0
1	D	368[A]	THR	3.9
1	D	370[A]	PRO	3.9
1	D	54[A]	PRO	3.9
1	D	31[A]	ILE	3.9
1	D	421[A]	ALA	3.8
1	D	442[A]	ASP	3.8
1	D	435[A]	LEU	3.8
1	B	476	CYS	3.8
1	D	400[A]	TYR	3.8
1	D	481[A]	THR	3.8
1	D	150[A]	GLY	3.7
1	D	103[A]	TYR	3.7
1	D	437[A]	TYR	3.7
1	D	468[A]	SER	3.7
1	D	478[A]	GLN	3.7
1	D	206[A]	ALA	3.7
1	D	112[A]	TYR	3.7
1	D	36[A]	GLY	3.7
1	D	33[A]	TRP	3.6
1	D	302[A]	TRP	3.6
1	C	482[A]	HIS	3.6
1	A	477[A]	TYR	3.5
1	D	28[A]	LYS	3.5
1	D	169[A]	PHE	3.5
1	D	422[A]	LYS	3.5

Continued on next page...

Continued from previous page...

Mol	Chain	Res	Type	RSRZ
1	D	231[A]	PRO	3.5
1	D	346[A]	PRO	3.5
1	D	467[A]	SER	3.5
1	D	42[A]	GLU	3.4
1	D	131[A]	TYR	3.4
1	D	174[A]	TYR	3.4
1	D	52[A]	GLY	3.4
1	B	483	GLU	3.4
1	D	195[A]	ALA	3.3
1	D	118[A]	ASN	3.3
1	D	276[A]	PRO	3.3
1	D	252[A]	GLY	3.3
1	D	265[A]	TRP	3.3
1	D	27[A]	GLN	3.3
1	D	51[A]	ASN	3.3
1	D	415[A]	PHE	3.3
1	D	121[A]	GLY	3.2
1	D	326[A]	HIS	3.2
1	D	53[A]	THR	3.2
1	D	228[A]	ASN	3.2
1	D	209[A]	LYS	3.2
1	D	412[A]	GLU	3.2
1	D	470[A]	ASP	3.1
1	D	444[A]	GLY	3.1
1	D	452[A]	SER	3.1
1	D	178[A]	PRO	3.1
1	D	340[A]	ALA	3.1
1	D	29[A]	THR	3.1
1	D	176[A]	ASP	3.1
1	D	307[A]	VAL	3.1
1	D	447[A]	LYS	3.1
1	D	371[A]	PHE	3.0
1	D	50[A]	GLU	3.0
1	D	233[A]	LEU	3.0
1	D	232[A]	TRP	3.0
1	D	483[A]	GLU	3.0
1	D	420[A]	GLY	3.0
1	D	58[A]	LEU	2.9
1	D	365[A]	LEU	2.9
1	A	27	GLN	2.9
1	D	140[A]	GLY	2.9
1	D	413[A]	VAL	2.9

Continued on next page...

Continued from previous page...

Mol	Chain	Res	Type	RSRZ
1	D	369[A]	PHE	2.9
1	D	446[A]	HIS	2.9
1	A	384	GLN	2.9
1	D	463[A]	ILE	2.8
1	D	172[A]	GLU	2.8
1	D	457[A]	GLY	2.8
1	B	470	ASP	2.8
1	D	34[A]	SER	2.8
1	D	440[A]	GLU	2.8
1	D	114[A]	PHE	2.7
1	D	133[A]	ILE	2.7
1	D	329[A]	ILE	2.7
1	A	476	CYS	2.7
1	D	40[A]	VAL	2.7
1	D	269[A]	GLU	2.7
1	D	184[A]	ILE	2.7
1	D	286[A]	ILE	2.7
1	D	32[A]	PRO	2.7
1	C	483	GLU	2.7
1	D	398[A]	ASN	2.7
1	D	453[A]	GLY	2.7
1	D	102[A]	ILE	2.7
1	D	117[A]	ILE	2.7
1	D	38[A]	LEU	2.6
1	D	163[A]	ALA	2.6
1	D	451[A]	ASP	2.6
1	A	251	ASP	2.6
1	D	248[A]	ARG	2.6
1	D	168[A]	LYS	2.6
1	D	35[A]	ASN	2.6
1	D	101[A]	ASN	2.6
1	D	426[A]	TRP	2.5
1	D	416[A]	SER	2.5
1	D	258[A]	GLU	2.5
1	D	377[A]	ASP	2.5
1	D	352[A]	ASN	2.5
1	D	49[A]	HIS	2.4
1	D	249[A]	PHE	2.4
1	D	137[A]	ALA	2.4
1	D	293[A]	GLY	2.4
1	D	353[A]	ASP	2.4
1	D	466[A]	ASP	2.4

Continued on next page...

Continued from previous page...

Mol	Chain	Res	Type	RSRZ
1	D	367[A]	LEU	2.4
1	D	271[A]	SER	2.4
1	D	456[A]	SER	2.4
1	D	341[A]	TYR	2.4
1	A	480	ASP	2.4
1	D	354[A]	PRO	2.3
1	D	321[A]	GLY	2.3
1	D	336[A]	GLY	2.3
1	B	479	ILE	2.3
1	D	373[A]	GLU	2.3
1	D	76[A]	TYR	2.3
1	D	123[A]	TYR	2.3
1	D	424[A]	ASN	2.3
1	B	472	VAL	2.3
1	D	200[A]	LEU	2.3
1	D	430[A]	THR	2.3
1	D	459[A]	ASP	2.2
1	D	464[A]	VAL	2.2
1	D	124[A]	GLY	2.2
1	D	175[A]	LYS	2.2
1	D	119[A]	GLN	2.2
1	D	425[A]	ALA	2.2
1	D	436[A]	GLU	2.2
1	C	475	ASP	2.2
1	D	250[A]	GLY	2.2
1	D	254[A]	TYR	2.2
1	D	348[A]	TYR	2.2
1	D	432[A]	ASP	2.2
1	B	445	VAL	2.2
1	D	267[A]	PHE	2.2
1	D	448[A]	PHE	2.2
1	C	479	ILE	2.1
1	D	135[A]	THR	2.1
1	D	275[A]	LYS	2.1
1	D	431[A]	LYS	2.1
1	D	224[A]	ALA	2.1
1	D	460[A]	HIS	2.1
1	D	48[A]	LYS	2.1
1	C	481	THR	2.1
1	D	379[A]	SER	2.1
1	D	357[A]	ASN	2.1
1	A	478	GLN	2.1

Continued on next page...

Continued from previous page...

Mol	Chain	Res	Type	RSRZ
1	A	28	LYS	2.0
1	D	376[A]	PRO	2.0

6.2 Non-standard residues in protein, DNA, RNA chains [i](#)

There are no non-standard protein/DNA/RNA residues in this entry.

6.3 Carbohydrates [i](#)

There are no oligosaccharides in this entry.

6.4 Ligands [i](#)

In the following table, the Atoms column lists the number of modelled atoms in the group and the number defined in the chemical component dictionary. The B-factors column lists the minimum, median, 95th percentile and maximum values of B factors of atoms in the group. The column labelled 'Q<0.9' lists the number of atoms with occupancy less than 0.9.

Mol	Type	Chain	Res	Atoms	RSCC	RSR	B-factors(Å ²)	Q<0.9
2	SO4	B	13	5/5	0.63	0.19	83,83,84,84	0
2	SO4	A	15	5/5	0.70	0.18	22,22,26,36	0
2	SO4	A	6	5/5	0.71	0.19	74,74,75,76	0
3	MRD	C	484	8/8	0.76	0.29	74,76,77,78	0
2	SO4	A	12	5/5	0.78	0.18	67,67,69,69	0
4	MPD	C	485	8/8	0.78	0.20	38,44,46,46	0
3	MRD	B	485	8/8	0.83	0.24	51,53,55,57	0
2	SO4	B	7	5/5	0.84	0.14	74,74,75,76	0
4	MPD	C	17	8/8	0.86	0.19	47,47,48,49	0
3	MRD	A	19	8/8	0.87	0.16	37,41,44,46	0
3	MRD	A	485	8/8	0.88	0.16	45,46,48,48	0
3	MRD	B	18	8/8	0.88	0.18	48,49,51,53	0
3	MRD	C	20	8/8	0.89	0.12	29,34,37,39	0
2	SO4	C	8	5/5	0.89	0.12	63,64,65,65	0
3	MRD	B	484	8/8	0.90	0.10	34,36,38,41	0
2	SO4	A	3	5/5	0.91	0.13	54,55,56,57	0
2	SO4	B	16	5/5	0.93	0.08	56,57,58,59	0
3	MRD	A	484	8/8	0.93	0.10	32,35,40,42	0
2	SO4	A	9	5/5	0.94	0.09	43,44,44,45	0
2	SO4	C	14	5/5	0.94	0.10	57,58,59,60	0
2	SO4	A	5	5/5	0.94	0.11	50,51,53,55	0

Continued on next page...

Continued from previous page...

Mol	Type	Chain	Res	Atoms	RSCC	RSR	B-factors(\AA^2)	Q<0.9
2	SO4	B	2	5/5	0.95	0.09	46,47,49,49	0
2	SO4	B	10	5/5	0.95	0.08	38,39,40,41	0
2	SO4	C	11	5/5	0.96	0.07	36,37,38,38	0
2	SO4	C	1	5/5	0.96	0.08	44,45,47,47	0
2	SO4	C	4	5/5	0.97	0.08	41,42,46,46	0

6.5 Other polymers [i](#)

There are no such residues in this entry.