



Full wwPDB X-ray Structure Validation Report ⓘ

Apr 28, 2025 – 03:44 PM EDT

PDB ID : 3MS2 / pdb_00003ms2
Title : Glycogen phosphorylase complexed with 4-methylbenzaldehyde-4-(beta-D-glucopyranosyl) thiosemicarbazone
Authors : Alexacou, K.-M.
Deposited on : 2010-04-29
Resolution : 2.10 Å(reported)

This is a Full wwPDB X-ray Structure Validation Report for a publicly released PDB entry.

We welcome your comments at validation@mail.wwpdb.org

A user guide is available at

<https://www.wwpdb.org/validation/2017/XrayValidationReportHelp>

with specific help available everywhere you see the ⓘ symbol.

The types of validation reports are described at

<http://www.wwpdb.org/validation/2017/FAQs#types>.

The following versions of software and data (see [references ⓘ](#)) were used in the production of this report:

MolProbity	:	4-5-2 with Phenix2.0rc1
Mogul	:	2022.3.0, CSD as543be (2022)
Xtriage (Phenix)	:	2.0rc1
EDS	:	3.0
buster-report	:	1.1.7 (2018)
Percentile statistics	:	20231227.v01 (using entries in the PDB archive December 27th 2023)
CCP4	:	9.0.006 (Gargrove)
Density-Fitness	:	1.0.12
Ideal geometry (proteins)	:	Engh & Huber (2001)
Ideal geometry (DNA, RNA)	:	Parkinson et al. (1996)
Validation Pipeline (wwPDB-VP)	:	2.43.1

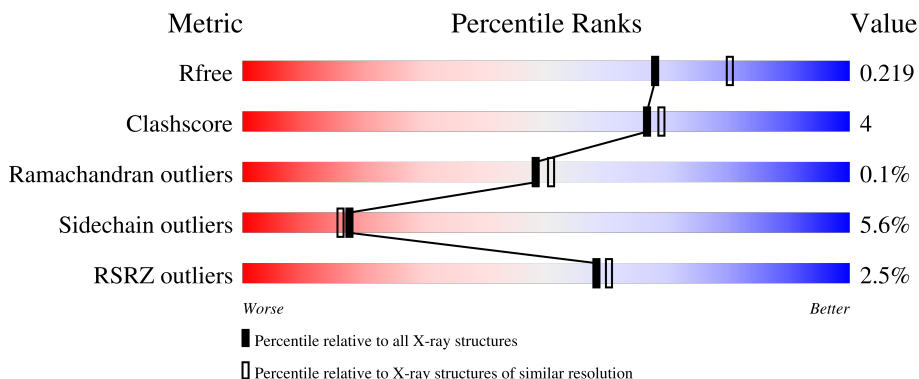
1 Overall quality at a glance

The following experimental techniques were used to determine the structure:

X-RAY DIFFRACTION


The reported resolution of this entry is 2.10 Å.

Percentile scores (ranging between 0-100) for global validation metrics of the entry are shown in the following graphic. The table shows the number of entries on which the scores are based.



Metric	Whole archive (#Entries)	Similar resolution (#Entries, resolution range(Å))
R_{free}	164625	6234 (2.10-2.10)
Clashscore	180529	6893 (2.10-2.10)
Ramachandran outliers	177936	6839 (2.10-2.10)
Sidechain outliers	177891	6840 (2.10-2.10)
RSRZ outliers	164620	6234 (2.10-2.10)

The table below summarises the geometric issues observed across the polymeric chains and their fit to the electron density. The red, orange, yellow and green segments of the lower bar indicate the fraction of residues that contain outliers for ≥ 3 , 2, 1 and 0 types of geometric quality criteria respectively. A grey segment represents the fraction of residues that are not modelled. The numeric value for each fraction is indicated below the corresponding segment, with a dot representing fractions $\leq 5\%$. The upper red bar (where present) indicates the fraction of residues that have poor fit to the electron density. The numeric value is given above the bar.

Mol	Chain	Length	Quality of chain
1	A	842	

2 Entry composition [i](#)

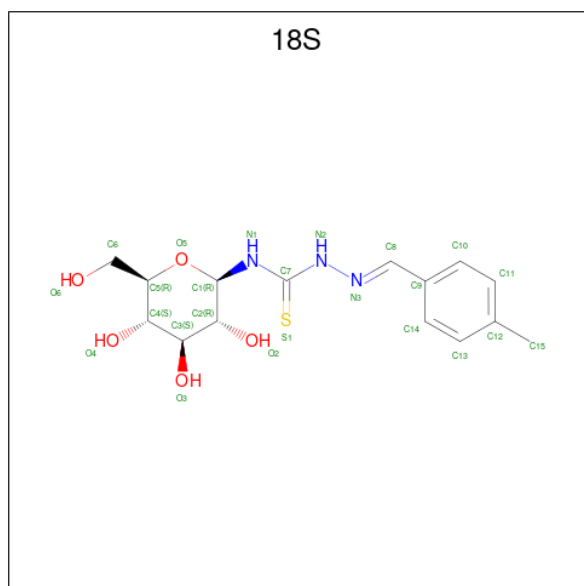
There are 3 unique types of molecules in this entry. The entry contains 6924 atoms, of which 0 are hydrogens and 0 are deuteriums.

In the tables below, the ZeroOcc column contains the number of atoms modelled with zero occupancy, the AltConf column contains the number of residues with at least one atom in alternate conformation and the Trace column contains the number of residues modelled with at most 2 atoms.

- Molecule 1 is a protein called Glycogen phosphorylase, muscle form.

Mol	Chain	Residues	Atoms						ZeroOcc	AltConf	Trace
1	A	811	Total	C	N	O	P	S	0	1	0
			6614	4215	1164	1205	1	29			

- Molecule 2 is N-((2E)-2-[(4-methylphenyl)methylidene]hydrazino)carbonothioyl)-beta-D-glucopyranosylamine (CCD ID: 18S) (formula: C₁₅H₂₁N₃O₅S).



Mol	Chain	Residues	Atoms					ZeroOcc	AltConf
2	A	1	Total	C	N	O	S	0	0
			24	15	3	5	1		
2	A	1	Total	C	N	O	S	0	0
			24	15	3	5	1		

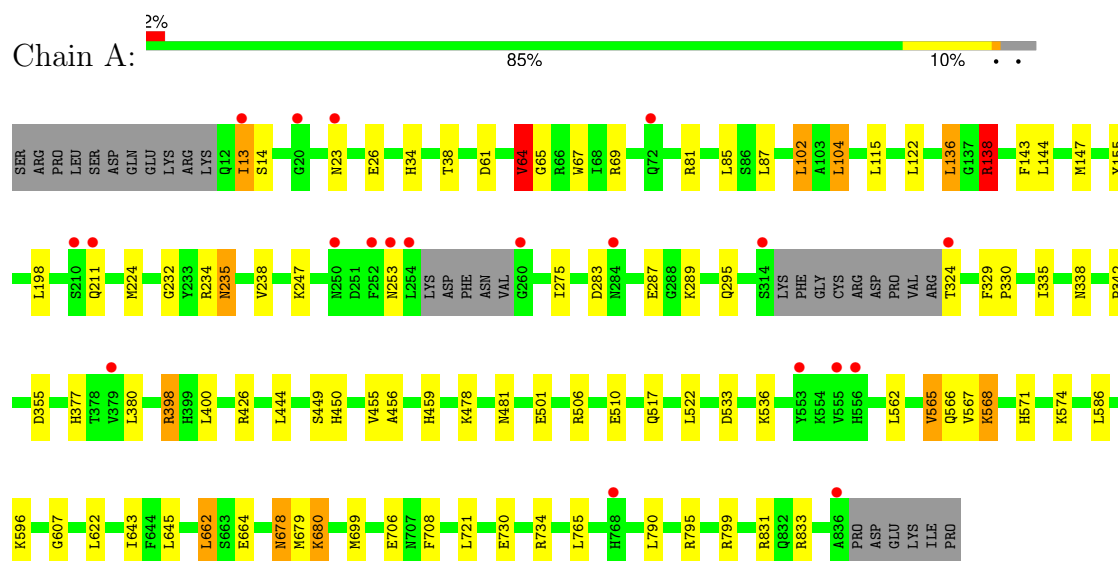
- Molecule 3 is water.

Mol	Chain	Residues	Atoms		ZeroOcc	AltConf
3	A	262	Total	O	0	0
			262	262		

3 Residue-property plots [i](#)

These plots are drawn for all protein, RNA, DNA and oligosaccharide chains in the entry. The first graphic for a chain summarises the proportions of the various outlier classes displayed in the second graphic. The second graphic shows the sequence view annotated by issues in geometry and electron density. Residues are color-coded according to the number of geometric quality criteria for which they contain at least one outlier: green = 0, yellow = 1, orange = 2 and red = 3 or more. A red dot above a residue indicates a poor fit to the electron density ($RSRZ > 2$). Stretches of 2 or more consecutive residues without any outlier are shown as a green connector. Residues present in the sample, but not in the model, are shown in grey.

- Molecule 1: Glycogen phosphorylase, muscle form



4 Data and refinement statistics

Property	Value	Source
Space group	P 43 21 2	Depositor
Cell constants a, b, c, α , β , γ	127.58Å 127.58Å 115.58Å 90.00° 90.00° 90.00°	Depositor
Resolution (Å)	34.26 – 2.10 34.26 – 2.10	Depositor EDS
% Data completeness (in resolution range)	88.4 (34.26-2.10) 88.3 (34.26-2.10)	Depositor EDS
R_{merge}	0.09	Depositor
R_{sym}	(Not available)	Depositor
$\langle I/\sigma(I) \rangle$ ¹	2.69 (at 2.10Å)	Xtriage
Refinement program	REFMAC 5.2.0019, CNS	Depositor
R, R_{free}	0.183 , 0.223 0.181 , 0.219	Depositor DCC
R_{free} test set	2509 reflections (5.06%)	wwPDB-VP
Wilson B-factor (Å ²)	31.1	Xtriage
Anisotropy	0.019	Xtriage
Bulk solvent k_{sol} (e/Å ³), B_{sol} (Å ²)	0.30 , 25.1	EDS
L-test for twinning ²	$\langle L \rangle = 0.50$, $\langle L^2 \rangle = 0.34$	Xtriage
Estimated twinning fraction	No twinning to report.	Xtriage
F_o, F_c correlation	0.96	EDS
Total number of atoms	6924	wwPDB-VP
Average B, all atoms (Å ²)	34.0	wwPDB-VP

Xtriage's analysis on translational NCS is as follows: *The largest off-origin peak in the Patterson function is 3.21% of the height of the origin peak. No significant pseudotranslation is detected.*

¹Intensities estimated from amplitudes.

²Theoretical values of $\langle |L| \rangle$, $\langle L^2 \rangle$ for acentric reflections are 0.5, 0.333 respectively for untwinned datasets, and 0.375, 0.2 for perfectly twinned datasets.

5 Model quality [i](#)

5.1 Standard geometry [i](#)

Bond lengths and bond angles in the following residue types are not validated in this section: 18S, LLP

The Z score for a bond length (or angle) is the number of standard deviations the observed value is removed from the expected value. A bond length (or angle) with $|Z| > 5$ is considered an outlier worth inspection. RMSZ is the root-mean-square of all Z scores of the bond lengths (or angles).

Mol	Chain	Bond lengths		Bond angles	
		RMSZ	$\# Z > 5$	RMSZ	$\# Z > 5$
1	A	0.58	0/6741	0.84	4/9122 (0.0%)

There are no bond length outliers.

All (4) bond angle outliers are listed below:

Mol	Chain	Res	Type	Atoms	Z	Observed($^{\circ}$)	Ideal($^{\circ}$)
1	A	565	VAL	N-CA-C	6.72	117.52	108.11
1	A	64	VAL	N-CA-C	5.65	115.84	110.53
1	A	14	SER	N-CA-C	5.45	117.22	111.28
1	A	138	ARG	NE-CZ-NH2	5.23	123.91	119.20

There are no chirality outliers.

There are no planarity outliers.

5.2 Too-close contacts [i](#)

In the following table, the Non-H and H(model) columns list the number of non-hydrogen atoms and hydrogen atoms in the chain respectively. The H(added) column lists the number of hydrogen atoms added and optimized by MolProbity. The Clashes column lists the number of clashes within the asymmetric unit, whereas Symm-Clashes lists symmetry-related clashes.

Mol	Chain	Non-H	H(model)	H(added)	Clashes	Symm-Clashes
1	A	6614	0	6545	48	0
2	A	48	0	42	1	0
3	A	262	0	0	3	0
All	All	6924	0	6587	48	0

The all-atom clashscore is defined as the number of clashes found per 1000 atoms (including hydrogen atoms). The all-atom clashscore for this structure is 4.

All (48) close contacts within the same asymmetric unit are listed below, sorted by their clash magnitude.

Atom-1	Atom-2	Interatomic distance (Å)	Clash overlap (Å)
1:A:730:GLU:O	1:A:734:ARG:HG3	1.84	0.77
1:A:138:ARG:O	1:A:138:ARG:HD3	1.86	0.75
1:A:355:ASP:OD1	1:A:398:ARG:HD3	1.87	0.74
1:A:455:VAL:H	1:A:459:HIS:HD2	1.42	0.67
1:A:34:HIS:HE1	1:A:61:ASP:OD1	1.79	0.65
1:A:329:PHE:HB3	1:A:330:PRO:HD3	1.79	0.65
1:A:678:ASN:HD22	1:A:679:MET:H	1.42	0.65
1:A:13:ILE:HD12	1:A:501:GLU:HB2	1.80	0.63
1:A:506:ARG:NH1	1:A:533:ASP:OD2	2.36	0.59
1:A:235:ASN:H	1:A:235:ASN:HD22	1.50	0.57
1:A:449:SER:O	1:A:478:LYS:HE2	2.05	0.56
1:A:144:LEU:HD23	1:A:147:MET:CE	2.35	0.56
1:A:450:HIS:HD2	3:A:898:HOH:O	1.89	0.54
1:A:64:VAL:HG12	2:A:920:18S:H13	1.90	0.52
1:A:102:LEU:HB3	1:A:104:LEU:HD22	1.91	0.52
1:A:680:LLP:O3	1:A:680:LLP:NZ	2.43	0.51
1:A:136:LEU:C	1:A:136:LEU:HD23	2.36	0.51
1:A:144:LEU:HA	1:A:147:MET:CE	2.41	0.51
1:A:562:LEU:HD21	1:A:662:LEU:HB2	1.93	0.50
1:A:144:LEU:HD23	1:A:147:MET:HE1	1.94	0.50
1:A:568:LYS:HG3	1:A:574:LYS:HD3	1.93	0.50
1:A:450:HIS:HE1	3:A:902:HOH:O	1.94	0.50
1:A:678:ASN:ND2	1:A:679:MET:H	2.10	0.48
1:A:699:MET:HE2	1:A:708:PHE:HZ	1.79	0.48
1:A:678:ASN:HD22	1:A:679:MET:N	2.11	0.48
1:A:65:GLY:O	1:A:69:ARG:HG2	2.15	0.47
1:A:678:ASN:HD22	1:A:678:ASN:N	2.12	0.47
1:A:34:HIS:HD2	1:A:38:THR:OG1	1.97	0.47
1:A:568:LYS:HE2	3:A:944:HOH:O	2.15	0.46
1:A:85:LEU:HD13	1:A:335:ILE:HG23	1.97	0.46
1:A:283:ASP:OD2	1:A:571[B]:HIS:HE1	1.98	0.46
1:A:287:GLU:HB3	1:A:289:LYS:HG2	1.97	0.46
1:A:143:PHE:O	1:A:147:MET:HG3	2.16	0.45
1:A:275:ILE:O	1:A:295:GLN:HG2	2.17	0.45
1:A:144:LEU:HA	1:A:147:MET:HE2	1.98	0.44
1:A:235:ASN:HD22	1:A:235:ASN:N	2.13	0.44
1:A:81:ARG:HG2	1:A:155:TYR:HE2	1.82	0.44
1:A:232:GLY:HA3	1:A:235:ASN:HD21	1.83	0.43
1:A:67:TRP:HA	1:A:238:VAL:HB	2.01	0.43
1:A:456:ALA:C	1:A:481:ASN:HD21	2.27	0.43

Continued on next page...

Continued from previous page...

Atom-1	Atom-2	Interatomic distance (Å)	Clash overlap (Å)
1:A:338:ASN:OD1	1:A:377:HIS:NE2	2.52	0.42
1:A:283:ASP:OD2	1:A:571[B]:HIS:CE1	2.73	0.42
1:A:567:VAL:O	1:A:568:LYS:HB3	2.20	0.42
1:A:566:GLN:HB2	1:A:664:GLU:HB2	2.01	0.41
1:A:795:ARG:O	1:A:799:ARG:HG3	2.20	0.41
1:A:568:LYS:O	1:A:607:GLY:HA3	2.21	0.41
1:A:224:MET:HE3	1:A:247:LYS:HG3	2.03	0.40
1:A:510:GLU:HB3	1:A:517:GLN:HE22	1.86	0.40

There are no symmetry-related clashes.

5.3 Torsion angles [i](#)

5.3.1 Protein backbone [i](#)

In the following table, the Percentiles column shows the percent Ramachandran outliers of the chain as a percentile score with respect to all X-ray entries followed by that with respect to entries of similar resolution.

The Analysed column shows the number of residues for which the backbone conformation was analysed, and the total number of residues.

Mol	Chain	Analysed	Favoured	Allowed	Outliers	Percentiles	
1	A	805/842 (96%)	784 (97%)	20 (2%)	1 (0%)	48	51

All (1) Ramachandran outliers are listed below:

Mol	Chain	Res	Type
1	A	342	PRO

5.3.2 Protein sidechains [i](#)

In the following table, the Percentiles column shows the percent sidechain outliers of the chain as a percentile score with respect to all X-ray entries followed by that with respect to entries of similar resolution.

The Analysed column shows the number of residues for which the sidechain conformation was analysed, and the total number of residues.

Mol	Chain	Analysed	Rotameric	Outliers	Percentiles	
1	A	701/730 (96%)	662 (94%)	39 (6%)	17	16

All (39) residues with a non-rotameric sidechain are listed below:

Mol	Chain	Res	Type
1	A	13	ILE
1	A	23	ASN
1	A	26	GLU
1	A	64	VAL
1	A	87	LEU
1	A	102	LEU
1	A	104	LEU
1	A	115	LEU
1	A	122	LEU
1	A	136	LEU
1	A	138	ARG
1	A	198	LEU
1	A	211	GLN
1	A	234	ARG
1	A	235	ASN
1	A	253	ASN
1	A	324	THR
1	A	380	LEU
1	A	398	ARG
1	A	400	LEU
1	A	426	ARG
1	A	444	LEU
1	A	522	LEU
1	A	536	LYS
1	A	565	VAL
1	A	568	LYS
1	A	586	LEU
1	A	596	LYS
1	A	622	LEU
1	A	643	ILE
1	A	645	LEU
1	A	662	LEU
1	A	678	ASN
1	A	706	GLU
1	A	721	LEU
1	A	765	LEU
1	A	790	LEU
1	A	831	ARG

Continued on next page...

Continued from previous page...

Mol	Chain	Res	Type
1	A	833	ARG

Sometimes sidechains can be flipped to improve hydrogen bonding and reduce clashes. All (19) such sidechains are listed below:

Mol	Chain	Res	Type
1	A	34	HIS
1	A	62	HIS
1	A	72	GLN
1	A	211	GLN
1	A	235	ASN
1	A	270	ASN
1	A	325	ASN
1	A	412	ASN
1	A	450	HIS
1	A	453	ASN
1	A	459	HIS
1	A	481	ASN
1	A	484	ASN
1	A	566	GLN
1	A	579	ASN
1	A	614	HIS
1	A	678	ASN
1	A	727	ASN
1	A	767	HIS

5.3.3 RNA ⓘ

There are no RNA molecules in this entry.

5.4 Non-standard residues in protein, DNA, RNA chains ⓘ

1 non-standard protein/DNA/RNA residue is modelled in this entry.

In the following table, the Counts columns list the number of bonds (or angles) for which Mogul statistics could be retrieved, the number of bonds (or angles) that are observed in the model and the number of bonds (or angles) that are defined in the Chemical Component Dictionary. The Link column lists molecule types, if any, to which the group is linked. The Z score for a bond length (or angle) is the number of standard deviations the observed value is removed from the expected value. A bond length (or angle) with $|Z| > 2$ is considered an outlier worth inspection. RMSZ is the root-mean-square of all Z scores of the bond lengths (or angles).

Mol	Type	Chain	Res	Link	Bond lengths			Bond angles		
					Counts	RMSZ	# Z > 2	Counts	RMSZ	# Z > 2
1	LLP	A	680	1	23,24,25	1.63	5 (21%)	25,32,34	1.39	4 (16%)

In the following table, the Chirals column lists the number of chiral outliers, the number of chiral centers analysed, the number of these observed in the model and the number defined in the Chemical Component Dictionary. Similar counts are reported in the Torsion and Rings columns. '-' means no outliers of that kind were identified.

Mol	Type	Chain	Res	Link	Chirals	Torsions	Rings
1	LLP	A	680	1	-	1/16/17/19	0/1/1/1

All (5) bond length outliers are listed below:

Mol	Chain	Res	Type	Atoms	Z	Observed(Å)	Ideal(Å)
1	A	680	LLP	O3-C3	-5.15	1.25	1.36
1	A	680	LLP	C4-C4'	2.59	1.52	1.46
1	A	680	LLP	C2-N1	2.54	1.38	1.33
1	A	680	LLP	P-OP2	-2.20	1.46	1.54
1	A	680	LLP	C4'-NZ	2.08	1.34	1.27

All (4) bond angle outliers are listed below:

Mol	Chain	Res	Type	Atoms	Z	Observed(°)	Ideal(°)
1	A	680	LLP	C4-C4'-NZ	-2.82	111.02	124.04
1	A	680	LLP	C5-C6-N1	-2.55	119.68	123.83
1	A	680	LLP	OP3-P-OP2	2.35	116.63	107.80
1	A	680	LLP	CE-NZ-C4'	-2.30	111.36	118.72

There are no chirality outliers.

All (1) torsion outliers are listed below:

Mol	Chain	Res	Type	Atoms
1	A	680	LLP	C4-C5-C5'-OP4

There are no ring outliers.

1 monomer is involved in 1 short contact:

Mol	Chain	Res	Type	Clashes	Symm-Clashes
1	A	680	LLP	1	0

5.5 Carbohydrates [i](#)

There are no oligosaccharides in this entry.

5.6 Ligand geometry [i](#)

2 ligands are modelled in this entry.

In the following table, the Counts columns list the number of bonds (or angles) for which Mogul statistics could be retrieved, the number of bonds (or angles) that are observed in the model and the number of bonds (or angles) that are defined in the Chemical Component Dictionary. The Link column lists molecule types, if any, to which the group is linked. The Z score for a bond length (or angle) is the number of standard deviations the observed value is removed from the expected value. A bond length (or angle) with $|Z| > 2$ is considered an outlier worth inspection. RMSZ is the root-mean-square of all Z scores of the bond lengths (or angles).

Mol	Type	Chain	Res	Link	Bond lengths			Bond angles		
					Counts	RMSZ	$\# Z > 2$	Counts	RMSZ	$\# Z > 2$
2	18S	A	920	-	25,25,25	2.19	1 (4%)	34,34,34	1.59	4 (11%)
2	18S	A	998	-	25,25,25	2.32	3 (12%)	34,34,34	1.27	3 (8%)

In the following table, the Chirals column lists the number of chiral outliers, the number of chiral centers analysed, the number of these observed in the model and the number defined in the Chemical Component Dictionary. Similar counts are reported in the Torsion and Rings columns. '-' means no outliers of that kind were identified.

Mol	Type	Chain	Res	Link	Chirals	Torsions	Rings
2	18S	A	920	-	-	2/12/32/32	0/2/2/2
2	18S	A	998	-	-	1/12/32/32	0/2/2/2

All (4) bond length outliers are listed below:

Mol	Chain	Res	Type	Atoms	Z	Observed(Å)	Ideal(Å)
2	A	998	18S	N2-N3	-10.84	1.24	1.38
2	A	920	18S	N2-N3	-10.33	1.25	1.38
2	A	998	18S	C7-S1	2.10	1.72	1.68
2	A	998	18S	C1-N1	2.06	1.46	1.43

All (7) bond angle outliers are listed below:

Mol	Chain	Res	Type	Atoms	Z	Observed(°)	Ideal(°)
2	A	920	18S	C5-O5-C1	4.88	119.26	112.47
2	A	998	18S	C7-N2-N3	4.49	125.37	120.27

Continued on next page...

Continued from previous page...

Mol	Chain	Res	Type	Atoms	Z	Observed(°)	Ideal(°)
2	A	920	18S	O5-C1-N1	-3.60	101.53	108.12
2	A	920	18S	C2-C1-N1	-2.32	108.26	111.25
2	A	920	18S	C8-N3-N2	2.31	120.04	115.97
2	A	998	18S	C1-N1-C7	-2.27	120.05	123.68
2	A	998	18S	S1-C7-N2	2.02	123.59	119.70

There are no chirality outliers.

All (3) torsion outliers are listed below:

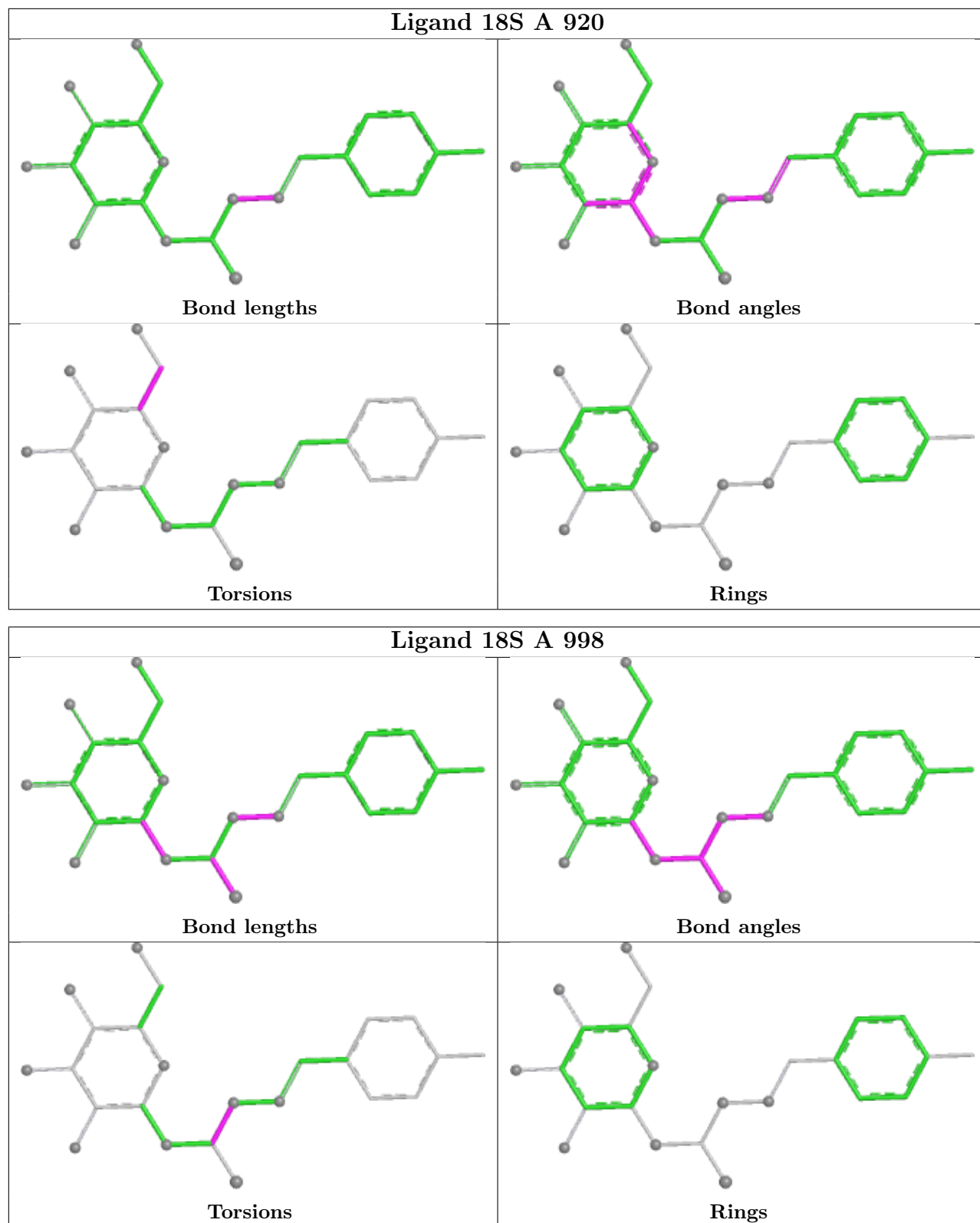
Mol	Chain	Res	Type	Atoms
2	A	920	18S	O5-C5-C6-O6
2	A	920	18S	C4-C5-C6-O6
2	A	998	18S	N1-C7-N2-N3

There are no ring outliers.

1 monomer is involved in 1 short contact:

Mol	Chain	Res	Type	Clashes	Symm-Clashes
2	A	920	18S	1	0

The following is a two-dimensional graphical depiction of Mogul quality analysis of bond lengths, bond angles, torsion angles, and ring geometry for all instances of the Ligand of Interest. In addition, ligands with molecular weight > 250 and outliers as shown on the validation Tables will also be included. For torsion angles, if less than 5% of the Mogul distribution of torsion angles is within 10 degrees of the torsion angle in question, then that torsion angle is considered an outlier. Any bond that is central to one or more torsion angles identified as an outlier by Mogul will be highlighted in the graph. For rings, the root-mean-square deviation (RMSD) between the ring in question and similar rings identified by Mogul is calculated over all ring torsion angles. If the average RMSD is greater than 60 degrees and the minimal RMSD between the ring in question and any Mogul-identified rings is also greater than 60 degrees, then that ring is considered an outlier. The outliers are highlighted in purple. The color gray indicates Mogul did not find sufficient equivalents in the CSD to analyse the geometry.



5.7 Other polymers ⓘ

There are no such residues in this entry.

5.8 Polymer linkage issues ⓘ

There are no chain breaks in this entry.

6 Fit of model and data [i](#)

6.1 Protein, DNA and RNA chains [i](#)

In the following table, the column labelled ‘#RSRZ> 2’ contains the number (and percentage) of RSRZ outliers, followed by percent RSRZ outliers for the chain as percentile scores relative to all X-ray entries and entries of similar resolution. The OWAB column contains the minimum, median, 95th percentile and maximum values of the occupancy-weighted average B-factor per residue. The column labelled ‘Q< 0.9’ lists the number of (and percentage) of residues with an average occupancy less than 0.9.

Mol	Chain	Analysed	<RSRZ>	#RSRZ>2	OWAB(Å ²)	Q<0.9
1	A	810/842 (96%)	-0.12	20 (2%) 58 60	17, 33, 51, 73	1 (0%)

All (20) RSRZ outliers are listed below:

Mol	Chain	Res	Type	RSRZ
1	A	252	PHE	6.2
1	A	324	THR	4.5
1	A	253	ASN	4.0
1	A	555	VAL	3.8
1	A	254	LEU	3.7
1	A	556	HIS	3.2
1	A	314	SER	2.8
1	A	284	ASN	2.7
1	A	13	ILE	2.7
1	A	260	GLY	2.4
1	A	250	ASN	2.3
1	A	211	GLN	2.3
1	A	553	TYR	2.3
1	A	379	VAL	2.2
1	A	20	GLY	2.2
1	A	72	GLN	2.2
1	A	210	SER	2.2
1	A	23	ASN	2.1
1	A	768	HIS	2.1
1	A	836	ALA	2.1

6.2 Non-standard residues in protein, DNA, RNA chains [i](#)

In the following table, the Atoms column lists the number of modelled atoms in the group and the number defined in the chemical component dictionary. The B-factors column lists the minimum, median, 95th percentile and maximum values of B factors of atoms in the group. The column

labelled 'Q< 0.9' lists the number of atoms with occupancy less than 0.9.

Mol	Type	Chain	Res	Atoms	RSCC	RSR	B-factors(\AA^2)	Q<0.9
1	LLP	A	680	24/25	0.97	0.06	22,24,29,33	0

6.3 Carbohydrates [i](#)

There are no monosaccharides in this entry.

6.4 Ligands [i](#)

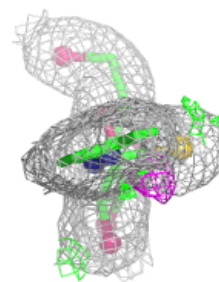
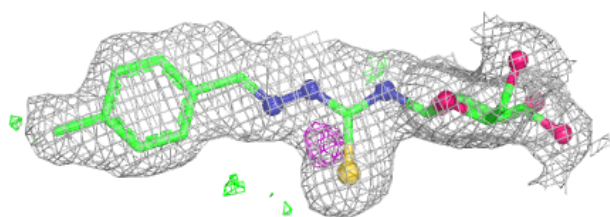
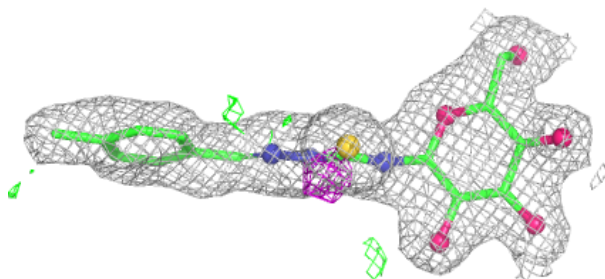
In the following table, the Atoms column lists the number of modelled atoms in the group and the number defined in the chemical component dictionary. The B-factors column lists the minimum, median, 95th percentile and maximum values of B factors of atoms in the group. The column labelled 'Q< 0.9' lists the number of atoms with occupancy less than 0.9.

Mol	Type	Chain	Res	Atoms	RSCC	RSR	B-factors(\AA^2)	Q<0.9
2	18S	A	998	24/24	0.94	0.08	22,29,44,44	0
2	18S	A	920	24/24	0.95	0.08	28,32,35,38	0

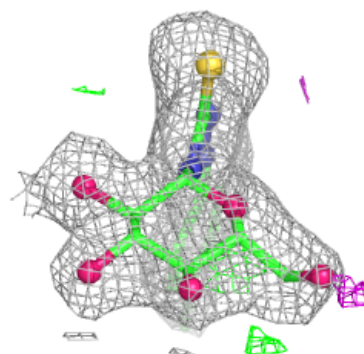
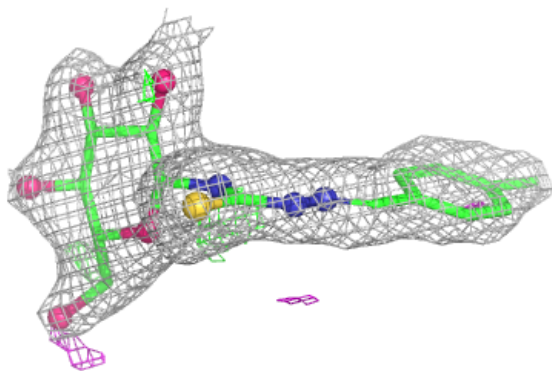
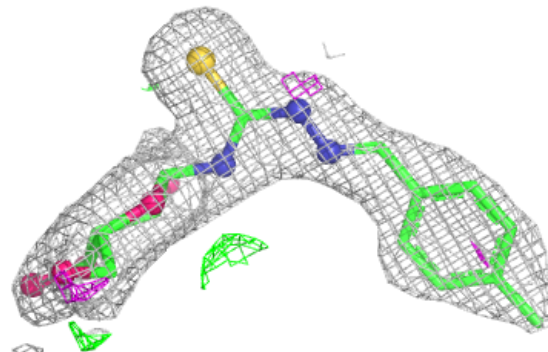
The following is a graphical depiction of the model fit to experimental electron density of all instances of the Ligand of Interest. In addition, ligands with molecular weight > 250 and outliers as shown on the geometry validation Tables will also be included. Each fit is shown from different orientation to approximate a three-dimensional view.

Electron density around 18S A 998:

$2mF_o-DF_c$ (at 0.7 rmsd) in gray
 mF_o-DF_c (at 3 rmsd) in purple (negative)
and green (positive)

**Electron density around 18S A 920:**

$2mF_o-DF_c$ (at 0.7 rmsd) in gray
 mF_o-DF_c (at 3 rmsd) in purple (negative)
and green (positive)



6.5 Other polymers [i](#)

There are no such residues in this entry.