



Full wwPDB X-ray Structure Validation Report ⓘ

Mar 5, 2026 – 12:54 AM UTC

PDB ID : 3NXX / pdb_00003nxx
Title : Preferential Selection of Isomer Binding from Chiral Mixtures: Alternate Binding Modes Observed for the E- and Z-isomers of a Series of 5-Substituted 2,4-Diaminofuro-2,3-d]pyrimidines as Ternary Complexes with NADPH and Human Dihydrofolate Reductase
Authors : Cody, V.
Deposited on : 2010-07-14
Resolution : 1.35 Å(reported)

This is a Full wwPDB X-ray Structure Validation Report for a publicly released PDB entry.

We welcome your comments at validation@mail.wwpdb.org

A user guide is available at

<https://www.wwpdb.org/validation/2017/XrayValidationReportHelp>

with specific help available everywhere you see the ⓘ symbol.

The types of validation reports are described at

<http://www.wwpdb.org/validation/2017/FAQs#types>.

The following versions of software and data (see [references](#) ①) were used in the production of this report:

MolProbity : 4-5-2 with Phenix2.0
Mogul : 2022.3.0, CSD as543be (2022)
Xtrriage (Phenix) : 2.0
EDS : 3.0
Buster-report : wwPDB partial adaption of 1.1.7 (2018)
Percentile statistics : 20250101.v01 (using entries in the PDB archive January 1st 2025)
CCP4 : 9.0.010 (Gargrove)
Density-Fitness : 1.0.12
Ideal geometry (proteins) : Engh & Huber (2001)
Ideal geometry (DNA, RNA) : Parkinson et al. (1996)
Validation Pipeline (wwPDB-VP) : 2.49

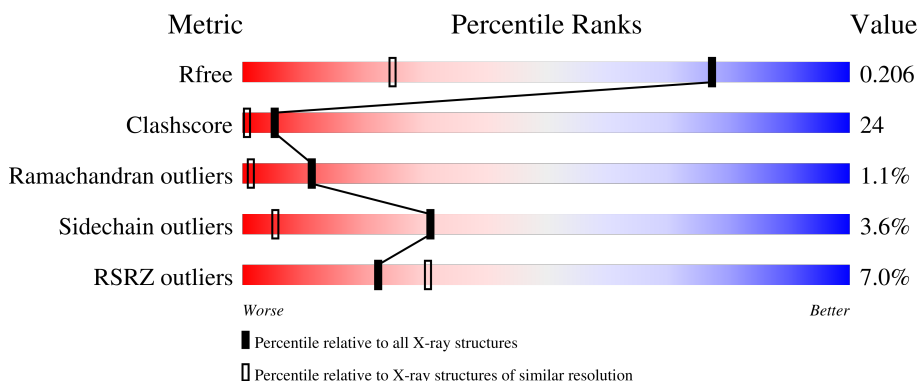
1 Overall quality at a glance i

The following experimental techniques were used to determine the structure:

X-RAY DIFFRACTION

The reported resolution of this entry is 1.35 Å.

Percentile scores (ranging between 0-100) for global validation metrics of the entry are shown in the following graphic. The table shows the number of entries on which the scores are based.



Metric	Whole archive (#Entries)	Similar resolution (#Entries, resolution range(Å))
R_{free}	180053	1216 (1.36-1.36)
Clashscore	190562	1232 (1.36-1.36)
Ramachandran outliers	187476	1220 (1.36-1.36)
Sidechain outliers	187428	1220 (1.36-1.36)
RSRZ outliers	180081	1214 (1.36-1.36)

The table below summarises the geometric issues observed across the polymeric chains and their fit to the electron density. The red, orange, yellow and green segments of the lower bar indicate the fraction of residues that contain outliers for ≥ 3 , 2, 1 and 0 types of geometric quality criteria respectively. A grey segment represents the fraction of residues that are not modelled. The numeric value for each fraction is indicated below the corresponding segment, with a dot representing fractions $\leq 5\%$. The upper red bar (where present) indicates the fraction of residues that have poor fit to the electron density. The numeric value is given above the bar.

Mol	Chain	Length	Quality of chain
1	A	186	

The following table lists non-polymeric compounds, carbohydrate monomers and non-standard residues in protein, DNA, RNA chains that are outliers for geometric or electron-density-fit criteria:

Mol	Type	Chain	Res	Chirality	Geometry	Clashes	Electron density
3	D2D	A	188[A]	-	-	X	-

Continued on next page...

Continued from previous page...

Mol	Type	Chain	Res	Chirality	Geometry	Clashes	Electron density
3	D2D	A	189[B]	-	-	X	-

2 Entry composition [i](#)

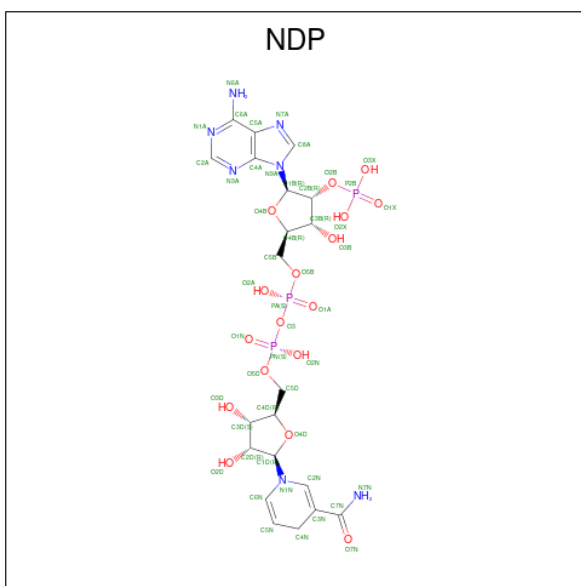
There are 4 unique types of molecules in this entry. The entry contains 1849 atoms, of which 0 are hydrogens and 0 are deuteriums.

In the tables below, the ZeroOcc column contains the number of atoms modelled with zero occupancy, the AltConf column contains the number of residues with at least one atom in alternate conformation and the Trace column contains the number of residues modelled with at most 2 atoms.

- Molecule 1 is a protein called Dihydrofolate reductase.

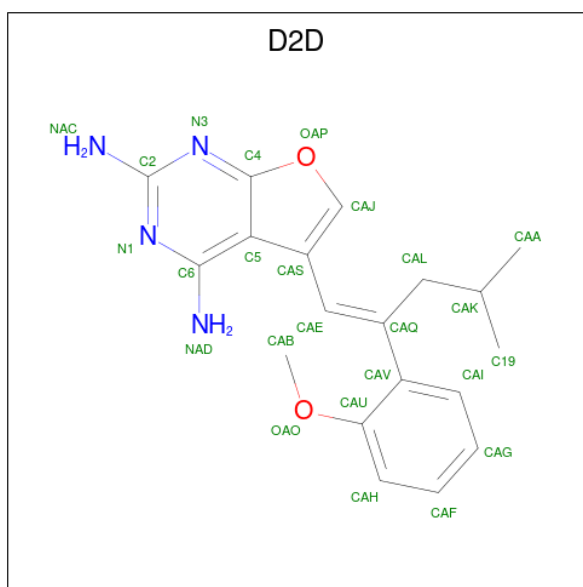
Mol	Chain	Residues	Atoms					ZeroOcc	AltConf	Trace
			Total	C	N	O	S			
1	A	186	1514	969	255	283	7	0	2	0

- Molecule 2 is NADPH DIHYDRO-NICOTINAMIDE-ADENINE-DINUCLEOTIDE PHOSPHATE (CCD ID: NDP) (formula: $C_{21}H_{30}N_7O_{17}P_3$).



Mol	Chain	Residues	Atoms					ZeroOcc	AltConf
			Total	C	N	O	P		
2	A	1	48	21	7	17	3	0	0

- Molecule 3 is 5-[(1E)-2-(2-methoxyphenyl)-4-methylpent-1-en-1-yl]furo[2,3-d]pyrimidine-2,4-diamine (CCD ID: D2D) (formula: $C_{19}H_{22}N_4O_2$).



Mol	Chain	Residues	Atoms				ZeroOcc	AltConf
3	A	1	Total	C	N	O	0	1
			25	19	4	2		
3	A	1	Total	C	N	O	0	1
			25	19	4	2		

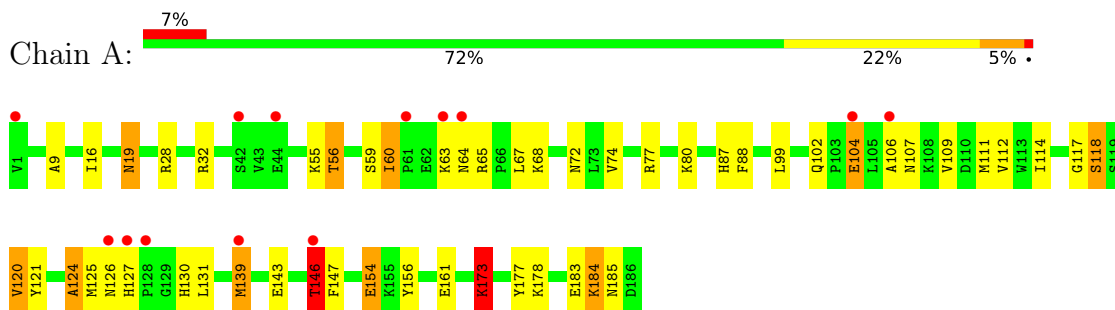
- Molecule 4 is water.

Mol	Chain	Residues	Atoms		ZeroOcc	AltConf
4	A	237	Total	O	0	0
			237	237		

3 Residue-property plots [i](#)

These plots are drawn for all protein, RNA, DNA and oligosaccharide chains in the entry. The first graphic for a chain summarises the proportions of the various outlier classes displayed in the second graphic. The second graphic shows the sequence view annotated by issues in geometry and electron density. Residues are color-coded according to the number of geometric quality criteria for which they contain at least one outlier: green = 0, yellow = 1, orange = 2 and red = 3 or more. A red dot above a residue indicates a poor fit to the electron density ($RSRZ > 2$). Stretches of 2 or more consecutive residues without any outlier are shown as a green connector. Residues present in the sample, but not in the model, are shown in grey.

- Molecule 1: Dihydrofolate reductase



4 Data and refinement statistics

Property	Value	Source
Space group	H 3	Depositor
Cell constants a, b, c, α , β , γ	84.35Å 84.35Å 77.66Å 90.00° 90.00° 120.00°	Depositor
Resolution (Å)	26.01 – 1.35 26.01 – 1.35	Depositor EDS
% Data completeness (in resolution range)	100.0 (26.01-1.35) 100.0 (26.01-1.35)	Depositor EDS
R_{merge}	0.06	Depositor
R_{sym}	0.06	Depositor
$\langle I/\sigma(I) \rangle$ ¹	3.46 (at 1.35Å)	Xtrriage
Refinement program	REFMAC 5.5.0088	Depositor
R, R_{free}	0.188 , 0.208 0.185 , 0.206	Depositor DCC
R_{free} test set	2282 reflections (5.04%)	wwPDB-VP
Wilson B-factor (Å ²)	13.2	Xtrriage
Anisotropy	0.020	Xtrriage
Bulk solvent k_{sol} (e/Å ³), B_{sol} (Å ²)	0.39 , 42.5	EDS
L-test for twinning ²	$\langle L \rangle = 0.49$, $\langle L^2 \rangle = 0.32$	Xtrriage
Estimated twinning fraction	0.025 for h,-h-k,-l	Xtrriage
F_o, F_c correlation	0.96	EDS
Total number of atoms	1849	wwPDB-VP
Average B, all atoms (Å ²)	16.0	wwPDB-VP

Xtrriage's analysis on translational NCS is as follows: *The largest off-origin peak in the Patterson function is 6.32% of the height of the origin peak. No significant pseudotranslation is detected.*

¹Intensities estimated from amplitudes.

²Theoretical values of $\langle |L| \rangle$, $\langle L^2 \rangle$ for acentric reflections are 0.5, 0.333 respectively for untwinned datasets, and 0.375, 0.2 for perfectly twinned datasets.

5 Model quality [i](#)

5.1 Standard geometry [i](#)

Bond lengths and bond angles in the following residue types are not validated in this section: D2D, NDP

The Z score for a bond length (or angle) is the number of standard deviations the observed value is removed from the expected value. A bond length (or angle) with $|Z| > 5$ is considered an outlier worth inspection. RMSZ is the root-mean-square of all Z scores of the bond lengths (or angles).

Mol	Chain	Bond lengths		Bond angles	
		RMSZ	# Z >5	RMSZ	# Z >5
1	A	1.82	18/1549 (1.2%)	1.53	13/2089 (0.6%)

Chiral center outliers are detected by calculating the chiral volume of a chiral center and verifying if the center is modelled as a planar moiety or with the opposite hand. A planarity outlier is detected by checking planarity of atoms in a peptide group, atoms in a mainchain group or atoms of a sidechain that are expected to be planar.

Mol	Chain	#Chirality outliers	#Planarity outliers
1	A	0	1

All (18) bond length outliers are listed below:

Mol	Chain	Res	Type	Atoms	Z	Observed(Å)	Ideal(Å)
1	A	111	MET	SD-CE	-15.49	1.40	1.79
1	A	161	GLU	N-CA	8.54	1.57	1.46
1	A	65	ARG	CA-C	8.21	1.63	1.52
1	A	60	ILE	CA-C	7.29	1.58	1.53
1	A	139	MET	CG-SD	7.26	1.98	1.80
1	A	146	THR	CB-OG1	-6.86	1.32	1.43
1	A	173	LYS	CB-CG	-6.50	1.32	1.52
1	A	88	PHE	C-O	6.41	1.31	1.23
1	A	124	ALA	CA-CB	-6.28	1.43	1.53
1	A	109	VAL	N-CA	6.08	1.54	1.46
1	A	120	VAL	CA-CB	6.02	1.61	1.54
1	A	19	ASN	CA-CB	5.81	1.62	1.53
1	A	185	ASN	CA-C	-5.79	1.47	1.53
1	A	112	VAL	CA-CB	-5.62	1.47	1.54
1	A	56	THR	N-CA	5.42	1.52	1.46
1	A	19	ASN	N-CA	5.35	1.54	1.46
1	A	74	VAL	CA-C	-5.14	1.46	1.52
1	A	125	MET	SD-CE	-5.05	1.67	1.79

All (13) bond angle outliers are listed below:

Mol	Chain	Res	Type	Atoms	Z	Observed(°)	Ideal(°)
1	A	125	MET	CB-CG-SD	-14.06	70.53	112.70
1	A	60	ILE	N-CA-C	-9.93	100.09	108.63
1	A	111	MET	CG-SD-CE	-9.03	81.03	100.90
1	A	146	THR	N-CA-CB	7.62	118.34	108.96
1	A	146	THR	N-CA-C	-6.99	99.43	109.29
1	A	127	HIS	CA-CB-CG	6.51	120.31	113.80
1	A	146	THR	CA-CB-OG1	6.46	119.30	109.60
1	A	161	GLU	CA-CB-CG	-6.21	101.68	114.10
1	A	143	GLU	O-C-N	6.11	130.40	123.06
1	A	106	ALA	N-CA-C	6.03	119.46	111.75
1	A	127	HIS	N-CA-CB	-5.97	102.41	110.23
1	A	146	THR	CB-CA-C	5.31	121.03	114.40
1	A	154	GLU	CA-CB-CG	5.02	124.14	114.10

There are no chirality outliers.

All (1) planarity outliers are listed below:

Mol	Chain	Res	Type	Group
1	A	146	THR	Mainchain

5.2 Too-close contacts [i](#)

In the following table, the Non-H and H(model) columns list the number of non-hydrogen atoms and hydrogen atoms in the chain respectively. The H(added) column lists the number of hydrogen atoms added and optimized by MolProbity. The Clashes column lists the number of clashes within the asymmetric unit, whereas Symm-Clashes lists symmetry-related clashes.

Mol	Chain	Non-H	H(model)	H(added)	Clashes	Symm-Clashes
1	A	1514	0	1519	64	1
2	A	48	0	26	6	0
3	A	50	0	44	20	0
4	A	237	0	0	22	4
All	All	1849	0	1589	78	4

The all-atom clashscore is defined as the number of clashes found per 1000 atoms (including hydrogen atoms). The all-atom clashscore for this structure is 24.

All (78) close contacts within the same asymmetric unit are listed below, sorted by their clash magnitude.

Atom-1	Atom-2	Interatomic distance (Å)	Clash overlap (Å)
1:A:120:VAL:HG23	4:A:423:HOH:O	1.09	1.23
3:A:188[A]:D2D:CAU	3:A:188[A]:D2D:H20	1.76	1.14
3:A:189[B]:D2D:CAI	3:A:189[B]:D2D:H20	1.78	1.12
3:A:189[B]:D2D:H20	3:A:189[B]:D2D:HAI	1.29	1.12
1:A:178:LYS:HE2	4:A:208:HOH:O	0.89	1.06
1:A:68:LYS:HE3	4:A:224:HOH:O	1.59	1.01
1:A:139:MET:CE	1:A:178:LYS:HG2	1.96	0.96
1:A:139:MET:CE	1:A:178:LYS:CG	2.43	0.95
3:A:189[B]:D2D:HAI	3:A:189[B]:D2D:C19	1.97	0.94
1:A:139:MET:HE1	1:A:178:LYS:HB3	1.47	0.94
3:A:188[A]:D2D:H20	3:A:188[A]:D2D:OAO	1.67	0.92
1:A:139:MET:HE2	1:A:178:LYS:CG	2.00	0.92
1:A:72:ASN:H	1:A:87:HIS:HD2	1.15	0.91
1:A:77:ARG:HD3	4:A:408:HOH:O	1.70	0.89
1:A:173:LYS:HE3	4:A:396:HOH:O	1.74	0.85
1:A:139:MET:HE2	1:A:178:LYS:HG2	1.58	0.84
1:A:139:MET:CE	1:A:178:LYS:CB	2.56	0.84
1:A:139:MET:HE2	1:A:178:LYS:CD	2.07	0.84
1:A:19:ASN:OD1	4:A:197:HOH:O	1.96	0.84
2:A:187:NDP:H42N	3:A:188[A]:D2D:CAJ	2.08	0.84
3:A:188[A]:D2D:CAU	3:A:188[A]:D2D:C19	2.55	0.83
1:A:139:MET:HE3	1:A:178:LYS:N	1.92	0.83
1:A:139:MET:CE	1:A:178:LYS:HB3	2.07	0.83
1:A:126:ASN:OD1	4:A:247:HOH:O	1.97	0.82
1:A:19:ASN:HA	4:A:197:HOH:O	1.80	0.81
1:A:173:LYS:CE	4:A:396:HOH:O	2.25	0.81
1:A:178:LYS:CE	4:A:208:HOH:O	1.64	0.81
1:A:156:TYR:CZ	1:A:184:LYS:HD2	2.16	0.80
1:A:130:HIS:HE1	1:A:183:GLU:OE1	1.62	0.80
1:A:102:GLN:HB2	4:A:241:HOH:O	1.81	0.79
1:A:126:ASN:CG	4:A:300:HOH:O	2.27	0.78
1:A:139:MET:HE3	1:A:178:LYS:HG2	1.67	0.76
1:A:72:ASN:H	1:A:87:HIS:CD2	2.02	0.75
3:A:188[A]:D2D:C19	3:A:188[A]:D2D:CAV	2.65	0.74
1:A:60:ILE:HG12	3:A:188[A]:D2D:HAAA	1.71	0.71
1:A:9:ALA:H	2:A:187:NDP:H72N	1.37	0.71
1:A:77:ARG:CD	4:A:408:HOH:O	2.35	0.68
1:A:56:THR:HG23	3:A:189[B]:D2D:H22	1.75	0.67
1:A:104:GLU:OE2	4:A:204:HOH:O	2.12	0.67
1:A:131:LEU:HB3	1:A:184:LYS:HD3	1.76	0.67
1:A:28:ARG:HD2	1:A:32:ARG:NH1	2.11	0.65
1:A:156:TYR:CE2	1:A:184:LYS:HD2	2.30	0.65

Continued on next page...

Continued from previous page...

Atom-1	Atom-2	Interatomic distance (Å)	Clash overlap (Å)
2:A:187:NDP:H42N	3:A:189[B]:D2D:CAJ	2.28	0.62
2:A:187:NDP:H42N	3:A:188[A]:D2D:HAJ	1.82	0.62
1:A:80:LYS:HD3	4:A:402:HOH:O	2.01	0.61
1:A:55:LYS:HE2	4:A:238:HOH:O	2.01	0.60
1:A:139:MET:HE3	1:A:177:TYR:C	2.26	0.59
1:A:139:MET:HE2	1:A:178:LYS:HD3	1.82	0.57
1:A:63:LYS:HE3	1:A:64:ASN:HD21	1.70	0.57
1:A:67:LEU:HD21	3:A:188[A]:D2D:HAA	1.85	0.57
1:A:63:LYS:HG3	1:A:64:ASN:ND2	2.22	0.55
1:A:59[B]:SER:O	3:A:189[B]:D2D:HAG	2.06	0.55
1:A:130:HIS:HD2	4:A:314:HOH:O	1.90	0.54
3:A:189[B]:D2D:HAI	3:A:189[B]:D2D:CAK	2.37	0.54
1:A:126:ASN:ND2	4:A:300:HOH:O	2.43	0.52
1:A:16:ILE:O	2:A:187:NDP:H2N	2.10	0.52
1:A:130:HIS:CE1	1:A:183:GLU:OE1	2.53	0.51
1:A:117:GLY:O	1:A:118[B]:SER:C	2.54	0.51
1:A:139:MET:HE3	1:A:178:LYS:CB	2.37	0.50
1:A:68:LYS:CE	4:A:224:HOH:O	2.33	0.50
1:A:118[B]:SER:O	1:A:121:TYR:N	2.46	0.49
1:A:60:ILE:HG12	3:A:189[B]:D2D:HAK	1.95	0.48
1:A:139:MET:CE	1:A:178:LYS:CD	2.84	0.47
1:A:72:ASN:N	1:A:87:HIS:HD2	1.97	0.47
3:A:188[A]:D2D:CAV	3:A:188[A]:D2D:H21	2.43	0.47
1:A:117:GLY:O	1:A:118[B]:SER:O	2.33	0.46
1:A:139:MET:HE3	1:A:178:LYS:CG	2.31	0.46
3:A:189[B]:D2D:H21	3:A:189[B]:D2D:CAE	2.46	0.45
1:A:59[A]:SER:HB3	3:A:188[A]:D2D:HAG	1.98	0.45
1:A:67:LEU:HD21	3:A:188[A]:D2D:CAA	2.45	0.45
1:A:120:VAL:N	4:A:423:HOH:O	2.49	0.45
1:A:55:LYS:CE	4:A:238:HOH:O	2.62	0.43
1:A:139:MET:CE	1:A:177:TYR:C	2.92	0.43
1:A:139:MET:CE	1:A:178:LYS:HD3	2.48	0.43
1:A:114:ILE:HD13	1:A:124:ALA:HB2	2.01	0.43
2:A:187:NDP:H52A	2:A:187:NDP:H8A	2.02	0.42
1:A:139:MET:HE2	1:A:178:LYS:CE	2.49	0.41
1:A:173:LYS:HE2	4:A:396:HOH:O	2.09	0.40

All (4) symmetry-related close contacts are listed below. The label for Atom-2 includes the symmetry operator and encoded unit-cell translations to be applied.

Atom-1	Atom-2	Interatomic distance (Å)	Clash overlap (Å)
1:A:154:GLU:OE2	4:A:249:HOH:O[6_445]	1.12	1.08
4:A:250:HOH:O	4:A:387:HOH:O[8_444]	1.52	0.68
4:A:342:HOH:O	4:A:394:HOH:O[8_444]	1.61	0.59
4:A:248:HOH:O	4:A:383:HOH:O[8_444]	1.82	0.38

5.3 Torsion angles [i](#)

5.3.1 Protein backbone [i](#)

In the following table, the Percentiles column shows the percent Ramachandran outliers of the chain as a percentile score with respect to all X-ray entries followed by that with respect to entries of similar resolution.

The Analysed column shows the number of residues for which the backbone conformation was analysed, and the total number of residues.

Mol	Chain	Analysed	Favoured	Allowed	Outliers	Percentiles
1	A	186/186 (100%)	178 (96%)	5 (3%)	3 (2%)	7 1

All (3) Ramachandran outliers are listed below:

Mol	Chain	Res	Type
1	A	118[A]	SER
1	A	118[B]	SER
1	A	147	PHE

5.3.2 Protein sidechains [i](#)

In the following table, the Percentiles column shows the percent sidechain outliers of the chain as a percentile score with respect to all X-ray entries followed by that with respect to entries of similar resolution.

The Analysed column shows the number of residues for which the sidechain conformation was analysed, and the total number of residues.

Mol	Chain	Analysed	Rotameric	Outliers	Percentiles
1	A	170/168 (101%)	164 (96%)	6 (4%)	32 6

All (6) residues with a non-rotameric sidechain are listed below:

Mol	Chain	Res	Type
1	A	99	LEU
1	A	104	GLU
1	A	107	ASN
1	A	146	THR
1	A	173	LYS
1	A	184	LYS

Sometimes sidechains can be flipped to improve hydrogen bonding and reduce clashes. All (6) such sidechains are listed below:

Mol	Chain	Res	Type
1	A	12	GLN
1	A	19	ASN
1	A	64	ASN
1	A	87	HIS
1	A	130	HIS
1	A	185	ASN

5.3.3 RNA [i](#)

There are no RNA molecules in this entry.

5.4 Non-standard residues in protein, DNA, RNA chains [i](#)

There are no non-standard protein/DNA/RNA residues in this entry.

5.5 Carbohydrates [i](#)

There are no oligosaccharides in this entry.

5.6 Ligand geometry [i](#)

3 ligands are modelled in this entry.

In the following table, the Counts columns list the number of bonds (or angles) for which Mogul statistics could be retrieved, the number of bonds (or angles) that are observed in the model and the number of bonds (or angles) that are defined in the Chemical Component Dictionary. The Link column lists molecule types, if any, to which the group is linked. The Z score for a bond length (or angle) is the number of standard deviations the observed value is removed from the expected value. A bond length (or angle) with $|Z| > 2$ is considered an outlier worth inspection. RMSZ is the root-mean-square of all Z scores of the bond lengths (or angles).

Mol	Type	Chain	Res	Link	Bond lengths			Bond angles		
					Counts	RMSZ	# Z > 2	Counts	RMSZ	# Z > 2
2	NDP	A	187	-	51,52,52	2.04	11 (21%)	71,80,80	1.85	16 (22%)
3	D2D	A	189[B]	-	26,27,27	1.58	5 (19%)	28,38,38	2.61	9 (32%)
3	D2D	A	188[A]	-	26,27,27	1.60	4 (15%)	28,38,38	2.41	10 (35%)

In the following table, the Chirals column lists the number of chiral outliers, the number of chiral centers analysed, the number of these observed in the model and the number defined in the Chemical Component Dictionary. Similar counts are reported in the Torsion and Rings columns. '-' means no outliers of that kind were identified.

Mol	Type	Chain	Res	Link	Chirals	Torsions	Rings
2	NDP	A	187	-	-	2/34/77/77	0/5/5/5
3	D2D	A	189[B]	-	-	4/14/14/14	0/3/3/3
3	D2D	A	188[A]	-	-	4/14/14/14	0/3/3/3

All (20) bond length outliers are listed below:

Mol	Chain	Res	Type	Atoms	Z	Observed(Å)	Ideal(Å)
2	A	187	NDP	O7N-C7N	6.53	1.39	1.24
2	A	187	NDP	C4N-C3N	-5.02	1.40	1.50
3	A	189[B]	D2D	CAV-CAQ	-5.01	1.43	1.49
2	A	187	NDP	PA-O3	4.99	1.64	1.59
3	A	188[A]	D2D	CAV-CAQ	-4.79	1.44	1.49
2	A	187	NDP	P2B-O2B	-3.74	1.53	1.59
3	A	188[A]	D2D	OAO-CAU	3.37	1.42	1.37
2	A	187	NDP	C5D-C4D	2.93	1.60	1.51
2	A	187	NDP	C7N-N7N	-2.84	1.25	1.33
2	A	187	NDP	PA-O2A	-2.72	1.42	1.55
2	A	187	NDP	C8A-N7A	2.68	1.36	1.31
2	A	187	NDP	O4B-C4B	2.60	1.50	1.45
3	A	189[B]	D2D	CAE-CAQ	2.60	1.39	1.34
3	A	189[B]	D2D	C5-CAS	-2.55	1.40	1.45
3	A	189[B]	D2D	C5-C6	-2.52	1.39	1.42
2	A	187	NDP	C5A-N7A	-2.49	1.34	1.39
2	A	187	NDP	PN-O3	2.45	1.62	1.59
3	A	188[A]	D2D	C5-C4	-2.42	1.36	1.39
3	A	189[B]	D2D	OAP-C4	-2.33	1.34	1.37
3	A	188[A]	D2D	OAP-C4	-2.07	1.34	1.37

All (35) bond angle outliers are listed below:

Mol	Chain	Res	Type	Atoms	Z	Observed(°)	Ideal(°)
3	A	188[A]	D2D	OAP-C4-C5	7.14	114.61	110.00
3	A	189[B]	D2D	OAP-C4-C5	7.13	114.60	110.00
2	A	187	NDP	N9A-C8A-N7A	-5.92	105.53	113.94
3	A	189[B]	D2D	CAK-CAL-CAQ	-5.81	104.34	114.57
2	A	187	NDP	C6N-N1N-C2N	4.65	124.30	119.32
3	A	189[B]	D2D	C4-OAP-CAJ	-4.62	102.85	105.80
2	A	187	NDP	C5A-N7A-C8A	4.49	110.51	103.45
2	A	187	NDP	N3A-C2A-N1A	-4.00	122.52	128.58
3	A	188[A]	D2D	CAB-OAO-CAU	4.00	123.38	117.51
3	A	189[B]	D2D	OAP-C4-N3	3.94	121.30	119.20
2	A	187	NDP	C5A-C4A-N3A	-3.92	121.32	126.72
2	A	187	NDP	C4A-N9A-C8A	3.88	109.81	105.74
3	A	188[A]	D2D	OAP-C4-N3	3.47	121.05	119.20
3	A	188[A]	D2D	CAG-CAF-CAH	3.43	124.47	120.24
3	A	189[B]	D2D	OAO-CAU-CAH	-3.26	118.80	124.30
3	A	189[B]	D2D	N3-C2-N1	-3.20	120.58	125.48
3	A	189[B]	D2D	C2-N1-C6	3.17	121.09	117.28
2	A	187	NDP	O7N-C7N-N7N	-3.16	115.81	122.89
3	A	188[A]	D2D	OAO-CAU-CAH	-3.15	118.98	124.30
2	A	187	NDP	C1D-N1N-C2N	-3.14	115.97	121.14
2	A	187	NDP	N3A-C4A-N9A	3.06	132.37	127.17
3	A	188[A]	D2D	N3-C2-N1	-2.88	121.06	125.48
3	A	188[A]	D2D	C2-N1-C6	2.77	120.60	117.28
2	A	187	NDP	C3N-C2N-N1N	-2.73	119.19	123.20
3	A	188[A]	D2D	NAC-C2-N1	2.68	121.24	117.22
3	A	189[B]	D2D	CAB-OAO-CAU	-2.58	113.73	117.51
2	A	187	NDP	C2A-N3A-C4A	2.58	118.13	111.83
3	A	188[A]	D2D	OAO-CAU-CAV	2.55	120.26	116.55
2	A	187	NDP	C4A-N9A-C1B	-2.51	120.77	126.63
3	A	189[B]	D2D	OAO-CAU-CAV	2.48	120.16	116.55
2	A	187	NDP	C4A-C5A-N7A	-2.45	107.78	110.58
3	A	188[A]	D2D	C4-OAP-CAJ	-2.32	104.32	105.80
2	A	187	NDP	O2N-PN-O1N	2.24	122.87	112.44
2	A	187	NDP	O3D-C3D-C2D	-2.21	104.73	111.82
2	A	187	NDP	C5B-C4B-C3B	-2.20	107.29	115.21

There are no chirality outliers.

All (10) torsion outliers are listed below:

Mol	Chain	Res	Type	Atoms
3	A	188[A]	D2D	CAQ-CAE-CAS-C5
3	A	188[A]	D2D	CAQ-CAE-CAS-CAJ
3	A	189[B]	D2D	CAQ-CAE-CAS-CAJ

Continued on next page...

Continued from previous page...

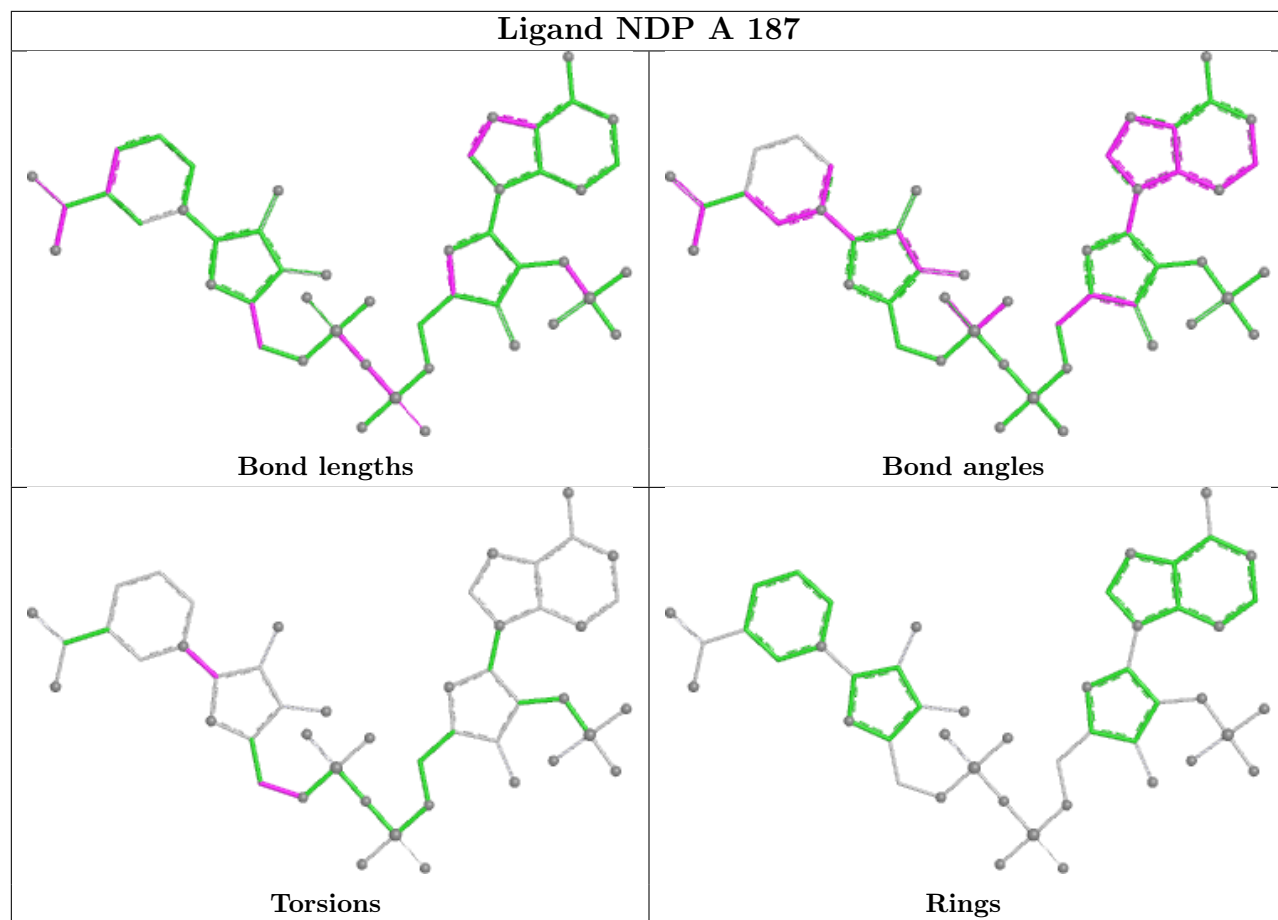
Mol	Chain	Res	Type	Atoms
3	A	189[B]	D2D	CAA-CAK-CAL-CAQ
3	A	188[A]	D2D	CAA-CAK-CAL-CAQ
3	A	189[B]	D2D	C19-CAK-CAL-CAQ
3	A	189[B]	D2D	CAQ-CAE-CAS-C5
3	A	188[A]	D2D	C19-CAK-CAL-CAQ
2	A	187	NDP	O4D-C1D-N1N-C2N
2	A	187	NDP	C4D-C5D-O5D-PN

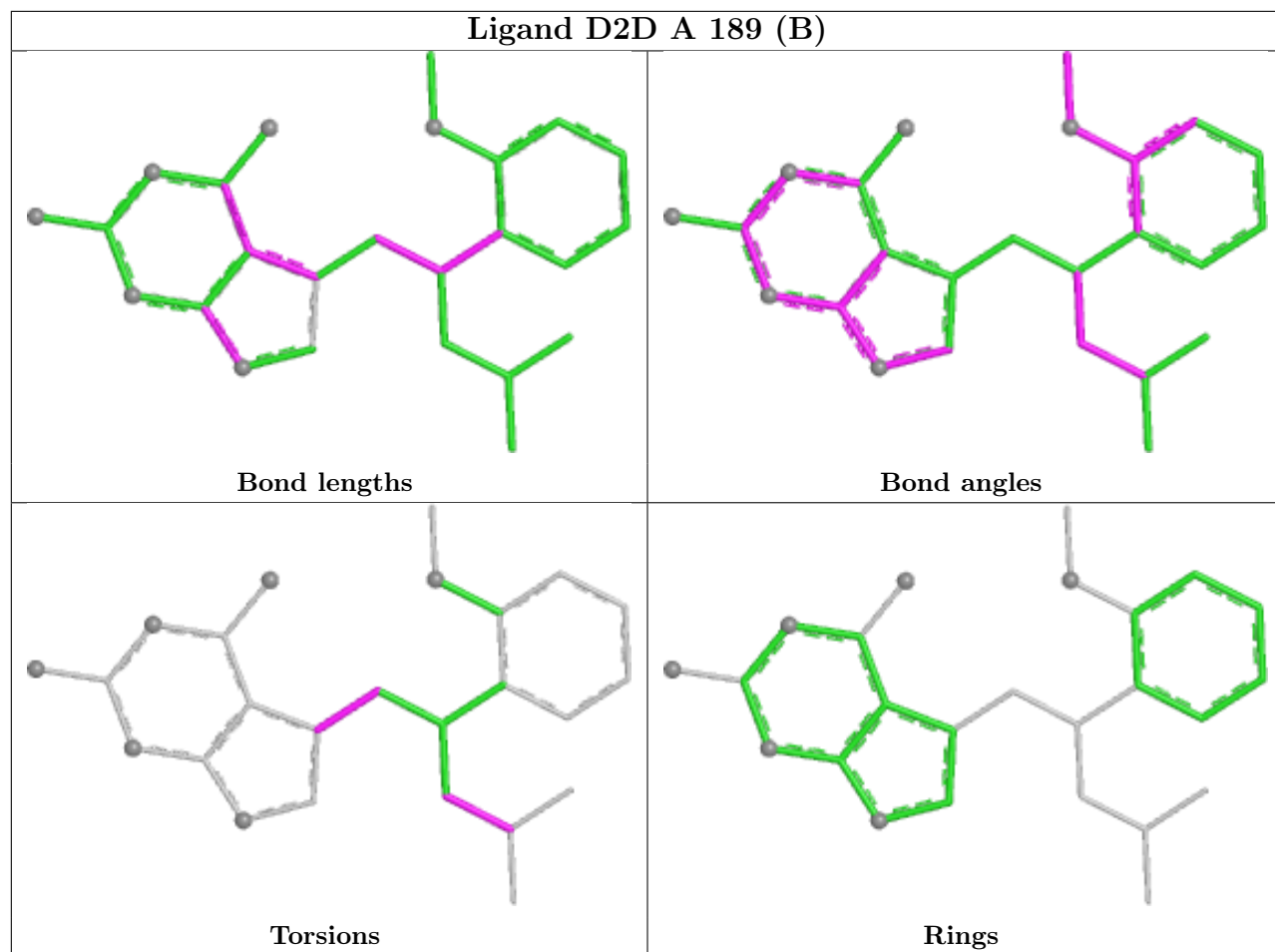
There are no ring outliers.

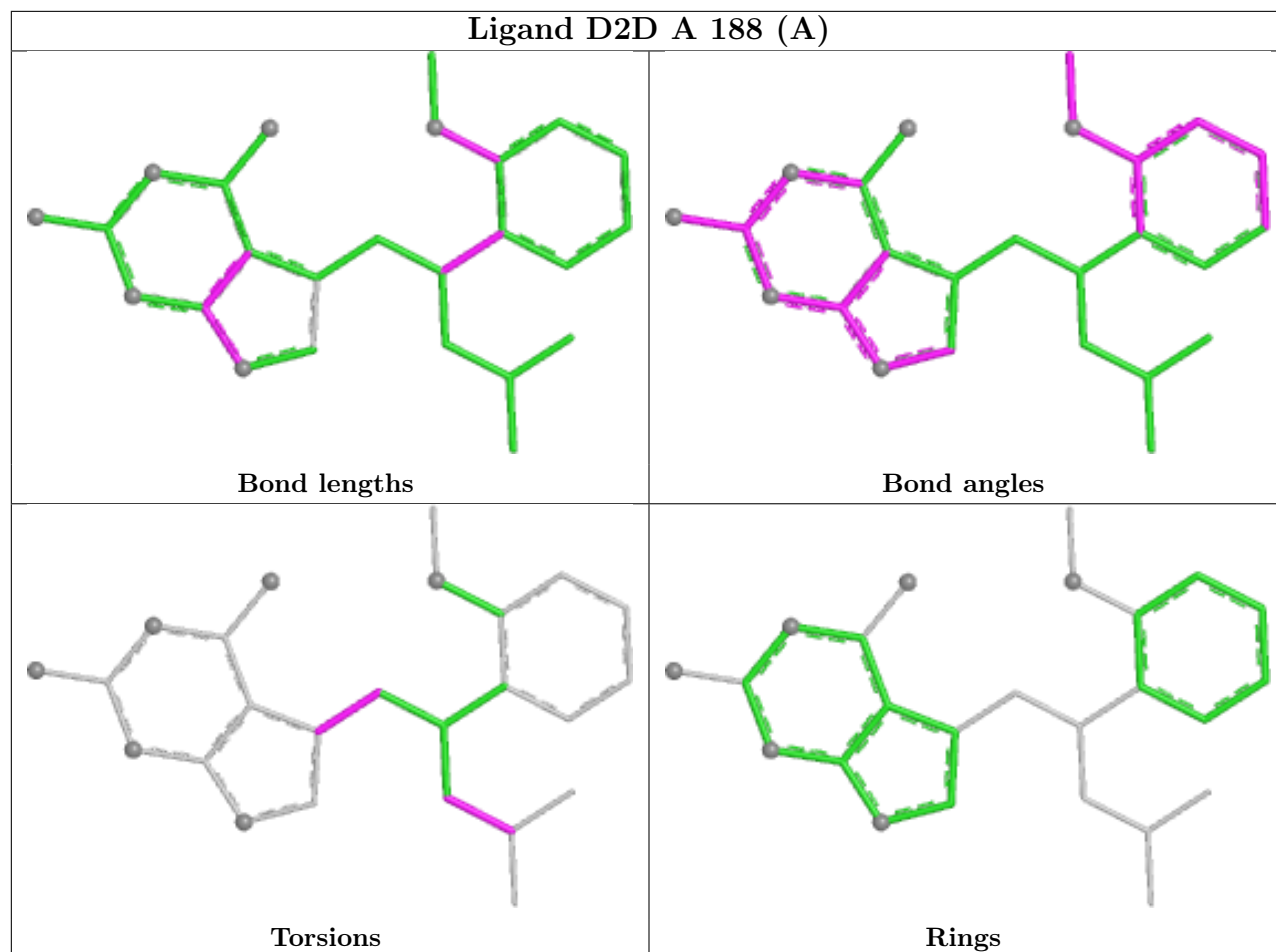
3 monomers are involved in 23 short contacts:

Mol	Chain	Res	Type	Clashes	Symm-Clashes
2	A	187	NDP	6	0
3	A	189[B]	D2D	9	0
3	A	188[A]	D2D	11	0

The following is a two-dimensional graphical depiction of Mogul quality analysis of bond lengths, bond angles, torsion angles, and ring geometry for all instances of the Ligand of Interest. In addition, ligands with molecular weight > 250 and outliers as shown on the validation Tables will also be included. For torsion angles, if less than 5% of the Mogul distribution of torsion angles is within 10 degrees of the torsion angle in question, then that torsion angle is considered an outlier. Any bond that is central to one or more torsion angles identified as an outlier by Mogul will be highlighted in the graph. For rings, the root-mean-square deviation (RMSD) between the ring in question and similar rings identified by Mogul is calculated over all ring torsion angles. If the average RMSD is greater than 60 degrees and the minimal RMSD between the ring in question and any Mogul-identified rings is also greater than 60 degrees, then that ring is considered an outlier. The outliers are highlighted in purple. The color gray indicates Mogul did not find sufficient equivalents in the CSD to analyse the geometry.







5.7 Other polymers [\(i\)](#)

There are no such residues in this entry.

5.8 Polymer linkage issues [\(i\)](#)

There are no chain breaks in this entry.

6 Fit of model and data [i](#)

6.1 Protein, DNA and RNA chains [i](#)

In the following table, the column labelled ‘#RSRZ > 2’ contains the number (and percentage) of RSRZ outliers, followed by percent RSRZ outliers for the chain as percentile scores relative to all X-ray entries and entries of similar resolution. The OWAB column contains the minimum, median, 95th percentile and maximum values of the occupancy-weighted average B-factor per residue. The column labelled ‘Q < 0.9’ lists the number of (and percentage) of residues with an average occupancy less than 0.9.

Mol	Chain	Analysed	<RSRZ>	#RSRZ>2	OWAB(Å ²)	Q<0.9
1	A	186/186 (100%)	0.25	13 (6%) 22 30	6, 13, 31, 44	2 (1%)

All (13) RSRZ outliers are listed below:

Mol	Chain	Res	Type	RSRZ
1	A	146	THR	5.3
1	A	64	ASN	4.1
1	A	128	PRO	3.5
1	A	63	LYS	3.1
1	A	42	SER	2.9
1	A	127	HIS	2.7
1	A	44	GLU	2.7
1	A	126	ASN	2.4
1	A	61	PRO	2.4
1	A	1	VAL	2.3
1	A	106	ALA	2.3
1	A	139	MET	2.1
1	A	104	GLU	2.1

6.2 Non-standard residues in protein, DNA, RNA chains [i](#)

There are no non-standard protein/DNA/RNA residues in this entry.

6.3 Carbohydrates [i](#)

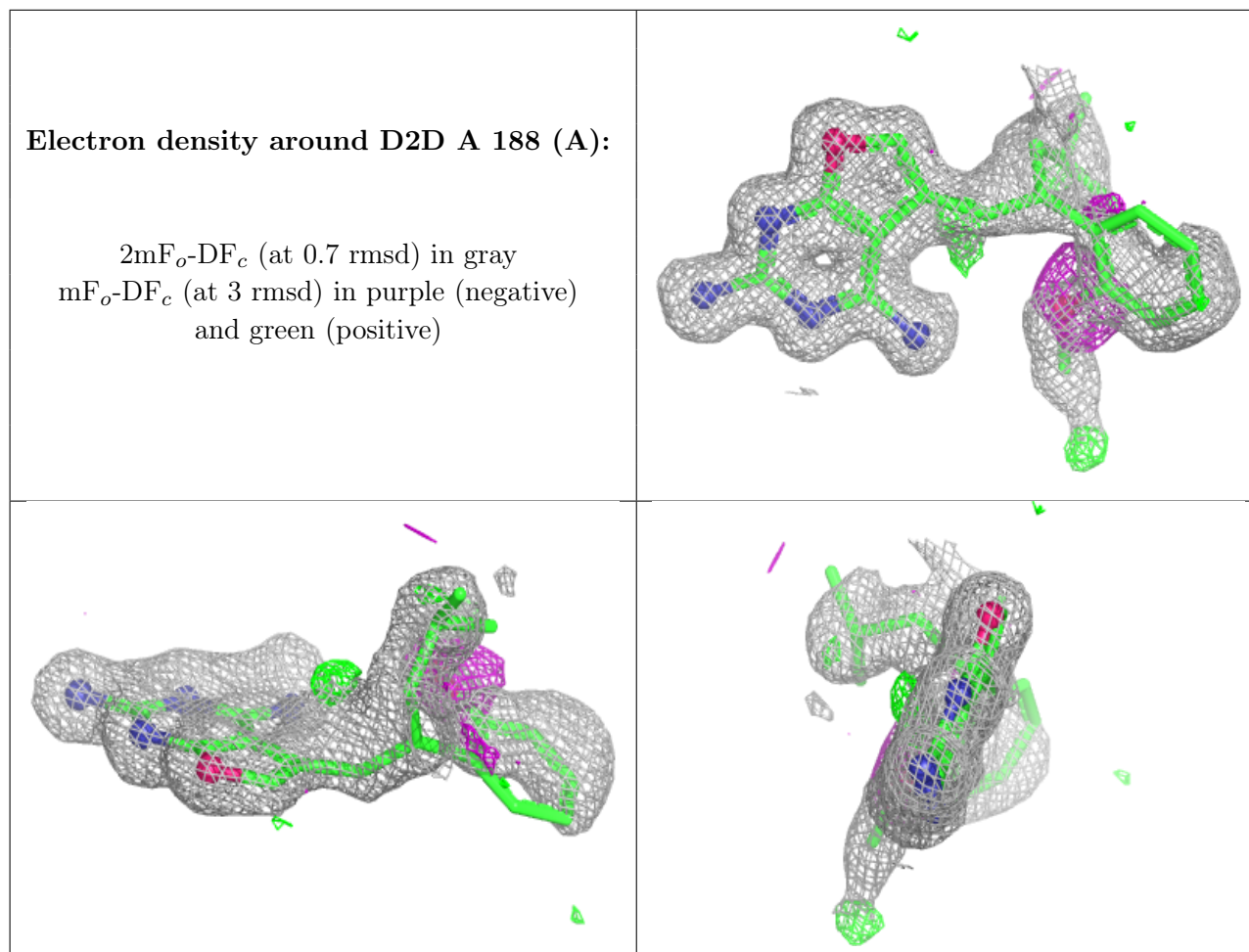
There are no oligosaccharides in this entry.

6.4 Ligands [i](#)

In the following table, the Atoms column lists the number of modelled atoms in the group and the number defined in the chemical component dictionary. The B-factors column lists the minimum, median, 95th percentile and maximum values of B factors of atoms in the group. The column labelled 'Q<0.9' lists the number of atoms with occupancy less than 0.9.

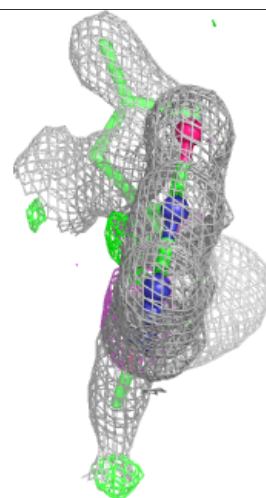
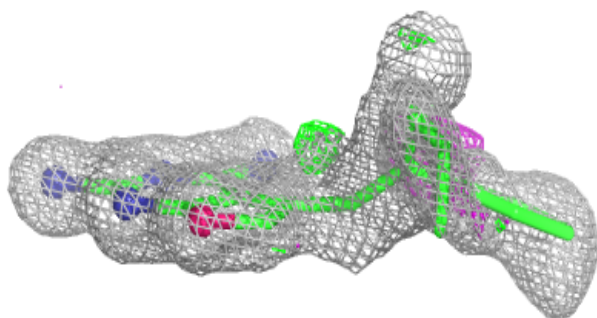
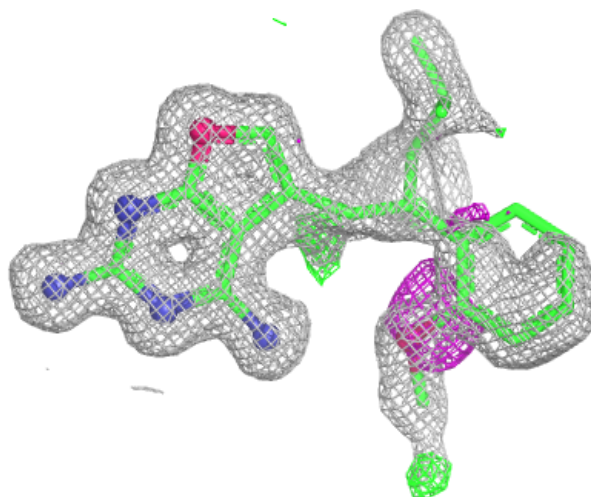
Mol	Type	Chain	Res	Atoms	RSCC	RSR	B-factors(Å ²)	Q<0.9
3	D2D	A	188[A]	25/25	0.89	0.14	7,16,24,31	25
3	D2D	A	189[B]	25/25	0.89	0.14	8,18,26,27	25
2	NDP	A	187	48/48	0.97	0.07	7,14,19,24	0

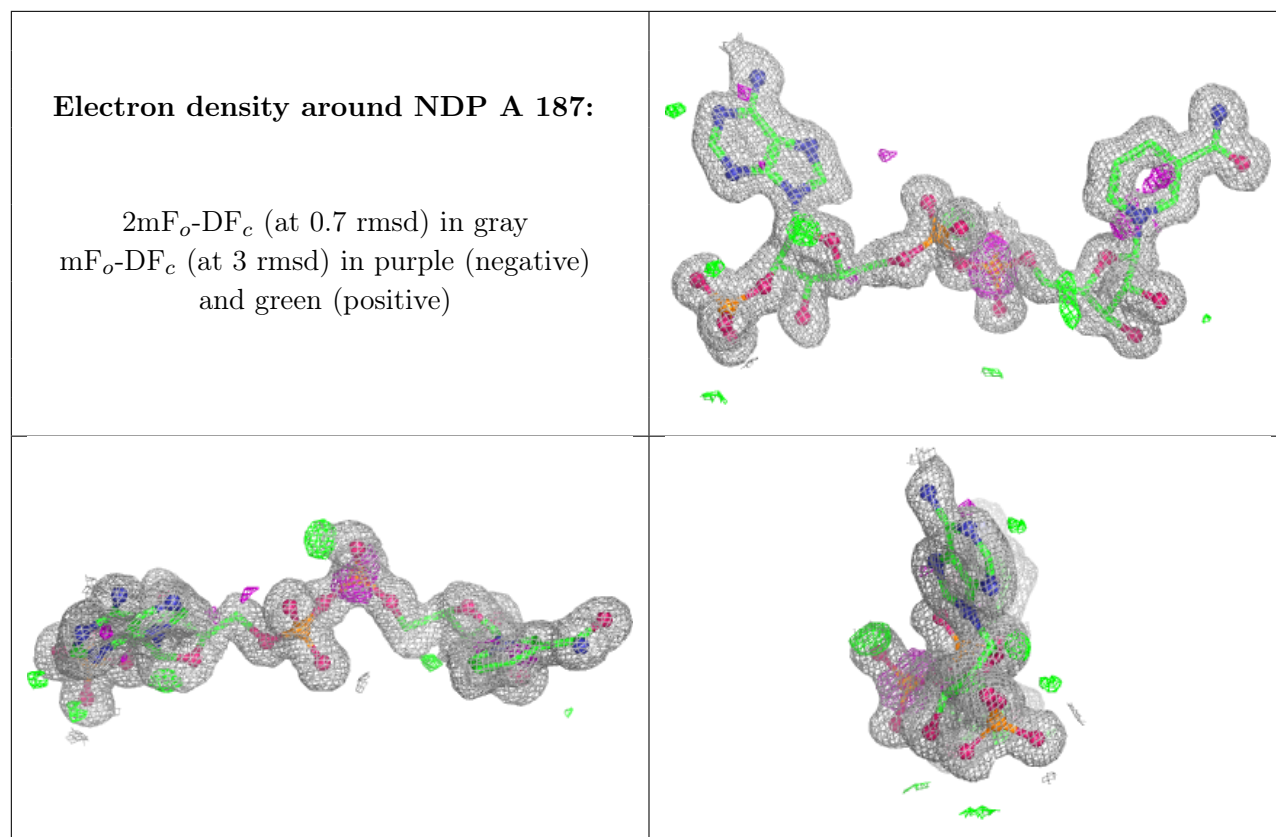
The following is a graphical depiction of the model fit to experimental electron density of all instances of the Ligand of Interest. In addition, ligands with molecular weight > 250 and outliers as shown on the geometry validation Tables will also be included. Each fit is shown from different orientation to approximate a three-dimensional view.



Electron density around D2D A 189 (B):

$2mF_o-DF_c$ (at 0.7 rmsd) in gray
 mF_o-DF_c (at 3 rmsd) in purple (negative)
and green (positive)





6.5 Other polymers [i](#)

There are no such residues in this entry.