



Full wwPDB X-ray Structure Validation Report ⓘ

Mar 19, 2025 – 12:48 PM EDT

PDB ID : 3SNE
Title : Crystal structure of SARS coronavirus main protease complexed with Ac-ESTLQ-H (Soaking)
Authors : Zhu, L.; Hilgenfeld, R.
Deposited on : 2011-06-29
Resolution : 2.60 Å (reported)

This is a Full wwPDB X-ray Structure Validation Report for a publicly released PDB entry.

We welcome your comments at validation@mail.wwpdb.org

A user guide is available at

<https://www.wwpdb.org/validation/2017/XrayValidationReportHelp>

with specific help available everywhere you see the ⓘ symbol.

The types of validation reports are described at

<http://www.wwpdb.org/validation/2017/FAQs#types>.

The following versions of software and data (see [references ⓘ](#)) were used in the production of this report:

MolProbity : 4.02b-467
Mogul : 2022.3.0, CSD as543be (2022)
Xtriage (Phenix) : 1.21
EDS : 3.0
Percentile statistics : 20231227.v01 (using entries in the PDB archive December 27th 2023)
CCP4 : 9.0.004 (Gargrove)
Density-Fitness : 1.0.11
Ideal geometry (proteins) : Engh & Huber (2001)
Ideal geometry (DNA, RNA) : Parkinson et al. (1996)
Validation Pipeline (wwPDB-VP) : 2.41.4

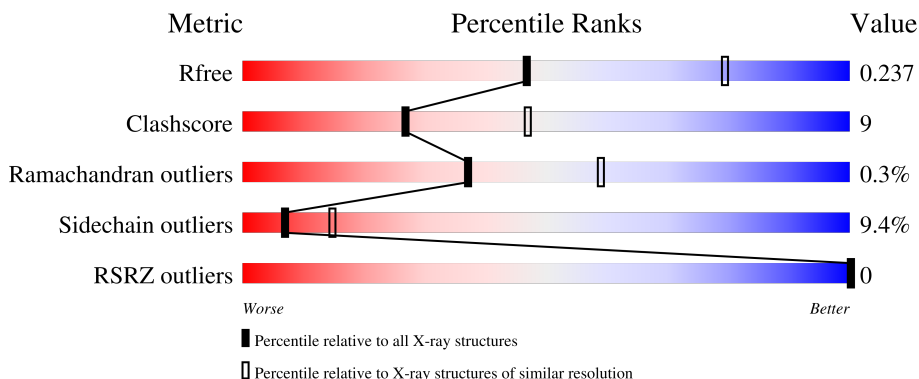
1 Overall quality at a glance

The following experimental techniques were used to determine the structure:

X-RAY DIFFRACTION



The reported resolution of this entry is 2.60 Å.

Percentile scores (ranging between 0-100) for global validation metrics of the entry are shown in the following graphic. The table shows the number of entries on which the scores are based.



Metric	Whole archive (#Entries)	Similar resolution (#Entries, resolution range(Å))
R_{free}	164625	3775 (2.60-2.60)
Clashscore	180529	4181 (2.60-2.60)
Ramachandran outliers	177936	4129 (2.60-2.60)
Sidechain outliers	177891	4129 (2.60-2.60)
RSRZ outliers	164620	3775 (2.60-2.60)

The table below summarises the geometric issues observed across the polymeric chains and their fit to the electron density. The red, orange, yellow and green segments of the lower bar indicate the fraction of residues that contain outliers for ≥ 3 , 2, 1 and 0 types of geometric quality criteria respectively. A grey segment represents the fraction of residues that are not modelled. The numeric value for each fraction is indicated below the corresponding segment, with a dot representing fractions $\leq 5\%$. The upper red bar (where present) indicates the fraction of residues that have poor fit to the electron density. The numeric value is given above the bar.

Mol	Chain	Length	Quality of chain
1	A	306	 78% 20%
2	H	6	 50% 50%

2 Entry composition [i](#)

There are 4 unique types of molecules in this entry. The entry contains 2509 atoms, of which 0 are hydrogens and 0 are deuteriums.

In the tables below, the ZeroOcc column contains the number of atoms modelled with zero occupancy, the AltConf column contains the number of residues with at least one atom in alternate conformation and the Trace column contains the number of residues modelled with at most 2 atoms.

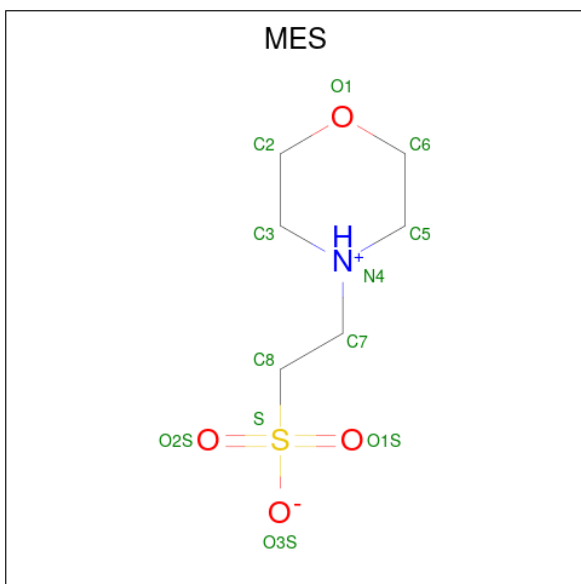
- Molecule 1 is a protein called 3C-like proteinase.

Mol	Chain	Residues	Atoms					ZeroOcc	AltConf	Trace
			Total	C	N	O	S			
1	A	306	2376	1503	405	445	23	0	1	0

- Molecule 2 is a protein called Peptide aldehyde inhibitor Ac-ESTLQ-H.

Mol	Chain	Residues	Atoms				ZeroOcc	AltConf	Trace
			Total	C	N	O			
2	H	6	42	25	6	11	0	0	0

- Molecule 3 is 2-(N-MORPHOLINO)-ETHANESULFONIC ACID (three-letter code: MES) (formula: C₆H₁₃NO₄S).



Mol	Chain	Residues	Atoms					ZeroOcc	AltConf
			Total	C	N	O	S		
3	A	1	12	6	1	4	1	0	0

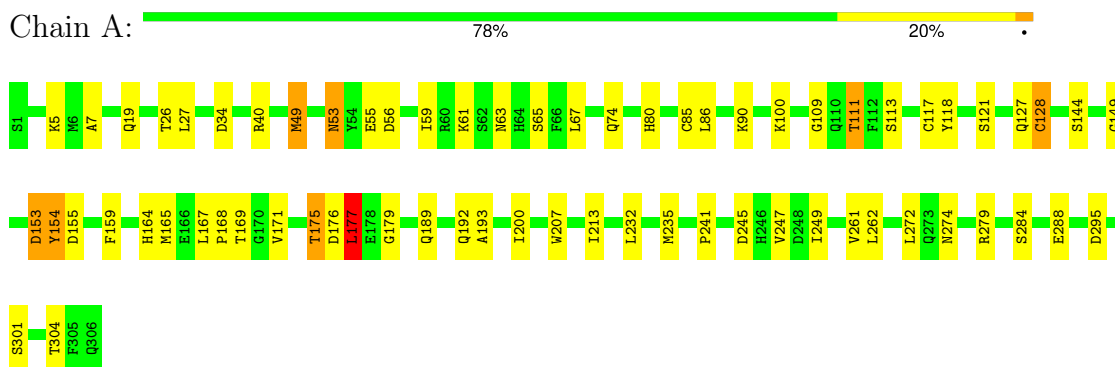
- Molecule 4 is water.

Mol	Chain	Residues	Atoms		ZeroOcc	AltConf
4	A	79	Total	O	0	0
			79	79		

3 Residue-property plots [i](#)

These plots are drawn for all protein, RNA, DNA and oligosaccharide chains in the entry. The first graphic for a chain summarises the proportions of the various outlier classes displayed in the second graphic. The second graphic shows the sequence view annotated by issues in geometry and electron density. Residues are color-coded according to the number of geometric quality criteria for which they contain at least one outlier: green = 0, yellow = 1, orange = 2 and red = 3 or more. A red dot above a residue indicates a poor fit to the electron density ($RSRZ > 2$). Stretches of 2 or more consecutive residues without any outlier are shown as a green connector. Residues present in the sample, but not in the model, are shown in grey.

- Molecule 1: 3C-like proteinase



- Molecule 2: Peptide aldehyde inhibitor Ac-ESTLQ-H



4 Data and refinement statistics

Property	Value	Source
Space group	C 1 2 1	Depositor
Cell constants a, b, c, α , β , γ	108.91Å 81.36Å 53.40Å 90.00° 104.35° 90.00°	Depositor
Resolution (Å)	32.21 – 2.60 32.21 – 2.60	Depositor EDS
% Data completeness (in resolution range)	99.8 (32.21-2.60) 99.8 (32.21-2.60)	Depositor EDS
R_{merge}	(Not available)	Depositor
R_{sym}	(Not available)	Depositor
$\langle I/\sigma(I) \rangle$ ¹	2.34 (at 2.61Å)	Xtrriage
Refinement program	REFMAC 5.5.0110	Depositor
R, R_{free}	0.188 , 0.241 0.186 , 0.237	Depositor DCC
R_{free} test set	695 reflections (4.98%)	wwPDB-VP
Wilson B-factor (Å ²)	43.7	Xtrriage
Anisotropy	0.032	Xtrriage
Bulk solvent k_{sol} (e/Å ³), B_{sol} (Å ²)	0.30 , 30.5	EDS
L-test for twinning ²	$\langle L \rangle = 0.47$, $\langle L^2 \rangle = 0.29$	Xtrriage
Estimated twinning fraction	No twinning to report.	Xtrriage
F_o, F_c correlation	0.94	EDS
Total number of atoms	2509	wwPDB-VP
Average B, all atoms (Å ²)	38.0	wwPDB-VP

Xtrriage's analysis on translational NCS is as follows: *The largest off-origin peak in the Patterson function is 5.90% of the height of the origin peak. No significant pseudotranslation is detected.*

¹Intensities estimated from amplitudes.

²Theoretical values of $\langle |L| \rangle$, $\langle L^2 \rangle$ for acentric reflections are 0.5, 0.333 respectively for untwinned datasets, and 0.375, 0.2 for perfectly twinned datasets.

5 Model quality [i](#)

5.1 Standard geometry [i](#)

Bond lengths and bond angles in the following residue types are not validated in this section: ECC, MES, ACE

The Z score for a bond length (or angle) is the number of standard deviations the observed value is removed from the expected value. A bond length (or angle) with $|Z| > 5$ is considered an outlier worth inspection. RMSZ is the root-mean-square of all Z scores of the bond lengths (or angles).

Mol	Chain	Bond lengths		Bond angles	
		RMSZ	# $ Z > 5$	RMSZ	# $ Z > 5$
1	A	0.90	2/2432 (0.1%)	0.85	2/3302 (0.1%)
2	H	0.90	0/30	0.88	0/40
All	All	0.90	2/2462 (0.1%)	0.85	2/3342 (0.1%)

All (2) bond length outliers are listed below:

Mol	Chain	Res	Type	Atoms	Z	Observed(Å)	Ideal(Å)
1	A	117	CYS	CB-SG	-5.99	1.72	1.82
1	A	128	CYS	CB-SG	-5.30	1.73	1.81

All (2) bond angle outliers are listed below:

Mol	Chain	Res	Type	Atoms	Z	Observed(°)	Ideal(°)
1	A	193	ALA	N-CA-CB	5.64	118.00	110.10
1	A	177	LEU	CA-CB-CG	-5.36	102.98	115.30

There are no chirality outliers.

There are no planarity outliers.

5.2 Too-close contacts [i](#)

In the following table, the Non-H and H(model) columns list the number of non-hydrogen atoms and hydrogen atoms in the chain respectively. The H(added) column lists the number of hydrogen atoms added and optimized by MolProbity. The Clashes column lists the number of clashes within the asymmetric unit, whereas Symm-Clashes lists symmetry-related clashes.

Mol	Chain	Non-H	H(model)	H(added)	Clashes	Symm-Clashes
1	A	2376	0	2330	44	0
2	H	42	0	40	6	0

Continued on next page...

Continued from previous page...

Mol	Chain	Non-H	H(model)	H(added)	Clashes	Symm-Clashes
3	A	12	0	12	0	0
4	A	79	0	0	2	0
All	All	2509	0	2382	44	0

The all-atom clashscore is defined as the number of clashes found per 1000 atoms (including hydrogen atoms). The all-atom clashscore for this structure is 9.

All (44) close contacts within the same asymmetric unit are listed below, sorted by their clash magnitude.

Atom-1	Atom-2	Interatomic distance (Å)	Clash overlap (Å)
1:A:49[A]:MET:HA	1:A:49[A]:MET:HE3	1.28	1.12
1:A:49[A]:MET:HA	1:A:49[A]:MET:CE	1.81	1.08
1:A:175:THR:HG22	1:A:176:ASP:O	1.67	0.93
1:A:159:PHE:HB3	1:A:177:LEU:HD13	1.48	0.92
1:A:175:THR:CG2	1:A:176:ASP:O	2.20	0.90
1:A:49[A]:MET:SD	2:H:4:LEU:HD12	2.23	0.79
1:A:111:THR:HG21	1:A:295:ASP:OD2	1.87	0.73
1:A:159:PHE:HB3	1:A:177:LEU:CD1	2.18	0.72
1:A:159:PHE:CB	1:A:177:LEU:HD13	2.19	0.72
1:A:49[A]:MET:SD	2:H:4:LEU:CD1	2.79	0.69
1:A:49[A]:MET:CE	1:A:49[A]:MET:CA	2.64	0.68
1:A:49[A]:MET:HA	1:A:49[A]:MET:HE2	1.78	0.66
1:A:85:CYS:O	1:A:164:HIS:HE1	1.79	0.64
1:A:19:GLN:HE21	1:A:26:THR:HG21	1.62	0.63
1:A:153:ASP:O	1:A:154:TYR:HB2	2.00	0.60
1:A:113:SER:O	1:A:149:GLY:HA2	2.03	0.59
1:A:63:ASN:OD1	1:A:80:HIS:HD2	1.86	0.59
1:A:155:ASP:OD1	1:A:155:ASP:N	2.30	0.57
1:A:175:THR:CG2	1:A:176:ASP:N	2.67	0.57
1:A:165:MET:HB3	2:H:4:LEU:HD23	1.87	0.55
1:A:207:TRP:CD2	1:A:288:GLU:HB3	2.44	0.53
1:A:86:LEU:HG	1:A:179:GLY:HA2	1.90	0.52
1:A:34:ASP:OD1	1:A:90:LYS:NZ	2.36	0.52
1:A:213:ILE:HA	1:A:304:THR:HG23	1.92	0.52
1:A:245:ASP:O	1:A:249:ILE:HG13	2.11	0.51
1:A:40:ARG:HD3	1:A:85:CYS:HA	1.92	0.50
1:A:53:ASN:HD22	1:A:56:ASP:H	1.61	0.49
1:A:118:TYR:CE1	1:A:144:SER:HB3	2.48	0.48
1:A:109:GLY:HA2	1:A:200:ILE:HD13	1.97	0.47
1:A:165:MET:CB	2:H:4:LEU:HD23	2.44	0.47
1:A:49[A]:MET:CA	1:A:49[A]:MET:HE2	2.42	0.46

Continued on next page...

Continued from previous page...

Atom-1	Atom-2	Interatomic distance (Å)	Clash overlap (Å)
1:A:153:ASP:O	1:A:154:TYR:CB	2.64	0.46
1:A:7:ALA:HA	1:A:127:GLN:NE2	2.31	0.45
1:A:168:PRO:HG3	2:H:1:GLU:O	2.17	0.44
1:A:61:LYS:HE2	4:A:1073:HOH:O	2.17	0.43
1:A:175:THR:HG23	1:A:176:ASP:N	2.33	0.43
1:A:189:GLN:HG2	2:H:2:SER:O	2.19	0.42
1:A:207:TRP:CE2	1:A:288:GLU:HB3	2.55	0.42
1:A:55:GLU:HB2	4:A:1088:HOH:O	2.19	0.42
1:A:247:VAL:HG13	1:A:261:VAL:HG11	2.02	0.42
1:A:175:THR:HG23	1:A:176:ASP:O	2.12	0.42
1:A:167:LEU:HB3	1:A:168:PRO:HD2	2.03	0.41
1:A:169:THR:HB	1:A:171:VAL:HG22	2.03	0.41
1:A:19:GLN:HE21	1:A:26:THR:CG2	2.30	0.40

There are no symmetry-related clashes.

5.3 Torsion angles [i](#)

5.3.1 Protein backbone [i](#)

In the following table, the Percentiles column shows the percent Ramachandran outliers of the chain as a percentile score with respect to all X-ray entries followed by that with respect to entries of similar resolution.

The Analysed column shows the number of residues for which the backbone conformation was analysed, and the total number of residues.

Mol	Chain	Analysed	Favoured	Allowed	Outliers	Percentiles	
1	A	305/306 (100%)	293 (96%)	11 (4%)	1 (0%)	37	59
2	H	4/6 (67%)	3 (75%)	1 (25%)	0	100	100
All	All	309/312 (99%)	296 (96%)	12 (4%)	1 (0%)	37	59

All (1) Ramachandran outliers are listed below:

Mol	Chain	Res	Type
1	A	154	TYR

5.3.2 Protein sidechains [i](#)

In the following table, the Percentiles column shows the percent sidechain outliers of the chain as a percentile score with respect to all X-ray entries followed by that with respect to entries of similar resolution.

The Analysed column shows the number of residues for which the sidechain conformation was analysed, and the total number of residues.

Mol	Chain	Analysed	Rotameric	Outliers	Percentiles	
1	A	264/263 (100%)	238 (90%)	26 (10%)	6	13
2	H	4/4 (100%)	4 (100%)	0	100	100
All	All	268/267 (100%)	242 (90%)	26 (10%)	7	14

All (26) residues with a non-rotameric sidechain are listed below:

Mol	Chain	Res	Type
1	A	5	LYS
1	A	27	LEU
1	A	49[A]	MET
1	A	49[B]	MET
1	A	53	ASN
1	A	59	ILE
1	A	65	SER
1	A	67	LEU
1	A	74	GLN
1	A	100	LYS
1	A	111	THR
1	A	121	SER
1	A	128	CYS
1	A	153	ASP
1	A	175	THR
1	A	177	LEU
1	A	192	GLN
1	A	232	LEU
1	A	235	MET
1	A	241	PRO
1	A	262	LEU
1	A	272	LEU
1	A	274	ASN
1	A	279	ARG
1	A	284	SER
1	A	301	SER

Sometimes sidechains can be flipped to improve hydrogen bonding and reduce clashes. All (8) such sidechains are listed below:

Mol	Chain	Res	Type
1	A	19	GLN
1	A	53	ASN
1	A	74	GLN
1	A	80	HIS
1	A	127	GLN
1	A	164	HIS
1	A	256	GLN
1	A	273	GLN

5.3.3 RNA [i](#)

There are no RNA molecules in this entry.

5.4 Non-standard residues in protein, DNA, RNA chains [i](#)

1 non-standard protein/DNA/RNA residue is modelled in this entry.

In the following table, the Counts columns list the number of bonds (or angles) for which Mogul statistics could be retrieved, the number of bonds (or angles) that are observed in the model and the number of bonds (or angles) that are defined in the Chemical Component Dictionary. The Link column lists molecule types, if any, to which the group is linked. The Z score for a bond length (or angle) is the number of standard deviations the observed value is removed from the expected value. A bond length (or angle) with $|Z| > 2$ is considered an outlier worth inspection. RMSZ is the root-mean-square of all Z scores of the bond lengths (or angles).

Mol	Type	Chain	Res	Link	Bond lengths			Bond angles		
					Counts	RMSZ	# Z > 2	Counts	RMSZ	# Z > 2
2	ECC	H	5	2,1	8,8,8	0.63	0	8,9,9	0.84	0

In the following table, the Chirals column lists the number of chiral outliers, the number of chiral centers analysed, the number of these observed in the model and the number defined in the Chemical Component Dictionary. Similar counts are reported in the Torsion and Rings columns. '-' means no outliers of that kind were identified.

Mol	Type	Chain	Res	Link	Chirals	Torsions	Rings
2	ECC	H	5	2,1	-	2/7/7/7	-

There are no bond length outliers.

There are no bond angle outliers.

There are no chirality outliers.

All (2) torsion outliers are listed below:

Mol	Chain	Res	Type	Atoms
2	H	5	ECC	O-C-CA-N
2	H	5	ECC	O-C-CA-CB

There are no ring outliers.

No monomer is involved in short contacts.

5.5 Carbohydrates [i](#)

There are no oligosaccharides in this entry.

5.6 Ligand geometry [i](#)

1 ligand is modelled in this entry.

In the following table, the Counts columns list the number of bonds (or angles) for which Mogul statistics could be retrieved, the number of bonds (or angles) that are observed in the model and the number of bonds (or angles) that are defined in the Chemical Component Dictionary. The Link column lists molecule types, if any, to which the group is linked. The Z score for a bond length (or angle) is the number of standard deviations the observed value is removed from the expected value. A bond length (or angle) with $|Z| > 2$ is considered an outlier worth inspection. RMSZ is the root-mean-square of all Z scores of the bond lengths (or angles).

Mol	Type	Chain	Res	Link	Bond lengths			Bond angles		
					Counts	RMSZ	# Z > 2	Counts	RMSZ	# Z > 2
3	MES	A	2308	-	12,12,12	1.81	1 (8%)	15,16,16	5.89	11 (73%)

In the following table, the Chirals column lists the number of chiral outliers, the number of chiral centers analysed, the number of these observed in the model and the number defined in the Chemical Component Dictionary. Similar counts are reported in the Torsion and Rings columns. '-' means no outliers of that kind were identified.

Mol	Type	Chain	Res	Link	Chirals	Torsions	Rings
3	MES	A	2308	-	-	1/6/14/14	0/1/1/1

All (1) bond length outliers are listed below:

Mol	Chain	Res	Type	Atoms	Z	Observed(Å)	Ideal(Å)
3	A	2308	MES	C8-S	-5.77	1.69	1.77

All (11) bond angle outliers are listed below:

Mol	Chain	Res	Type	Atoms	Z	Observed(°)	Ideal(°)
3	A	2308	MES	O2S-S-C8	-12.73	87.49	106.73
3	A	2308	MES	O1S-S-C8	-12.72	87.50	106.73
3	A	2308	MES	O3S-S-C8	-9.69	87.05	106.00
3	A	2308	MES	C7-N4-C3	4.86	124.20	111.24
3	A	2308	MES	C5-N4-C3	4.61	118.77	108.84
3	A	2308	MES	C2-C3-N4	-4.09	103.91	110.12
3	A	2308	MES	C6-C5-N4	-3.08	105.45	110.12
3	A	2308	MES	O2S-S-O1S	2.86	123.12	113.82
3	A	2308	MES	O3S-S-O1S	2.85	118.53	111.40
3	A	2308	MES	O3S-S-O2S	2.53	117.72	111.40
3	A	2308	MES	C7-N4-C5	2.16	117.01	111.24

There are no chirality outliers.

All (1) torsion outliers are listed below:

Mol	Chain	Res	Type	Atoms
3	A	2308	MES	C8-C7-N4-C3

There are no ring outliers.

No monomer is involved in short contacts.

5.7 Other polymers [i](#)

There are no such residues in this entry.

5.8 Polymer linkage issues [i](#)

There are no chain breaks in this entry.

6 Fit of model and data [i](#)

6.1 Protein, DNA and RNA chains [i](#)

In the following table, the column labelled '#RSRZ > 2' contains the number (and percentage) of RSRZ outliers, followed by percent RSRZ outliers for the chain as percentile scores relative to all X-ray entries and entries of similar resolution. The OWAB column contains the minimum, median, 95th percentile and maximum values of the occupancy-weighted average B-factor per residue. The column labelled 'Q < 0.9' lists the number of (and percentage) of residues with an average occupancy less than 0.9.

Mol	Chain	Analysed	<RSRZ>	#RSRZ>2	OWAB(Å ²)	Q<0.9
1	A	306/306 (100%)	-0.67	0 100 100	18, 37, 55, 66	3 (0%)
2	H	4/6 (66%)	0.70	0 100 100	63, 68, 73, 76	0
All	All	310/312 (99%)	-0.65	0 100 100	18, 37, 57, 76	3 (0%)

There are no RSRZ outliers to report.

6.2 Non-standard residues in protein, DNA, RNA chains [i](#)

In the following table, the Atoms column lists the number of modelled atoms in the group and the number defined in the chemical component dictionary. The B-factors column lists the minimum, median, 95th percentile and maximum values of B factors of atoms in the group. The column labelled 'Q < 0.9' lists the number of atoms with occupancy less than 0.9.

Mol	Type	Chain	Res	Atoms	RSCC	RSR	B-factors(Å ²)	Q<0.9
2	ECC	H	5	9/9	0.92	0.10	41,46,50,54	0

6.3 Carbohydrates [i](#)

There are no monosaccharides in this entry.

6.4 Ligands [i](#)

In the following table, the Atoms column lists the number of modelled atoms in the group and the number defined in the chemical component dictionary. The B-factors column lists the minimum, median, 95th percentile and maximum values of B factors of atoms in the group. The column labelled 'Q < 0.9' lists the number of atoms with occupancy less than 0.9.

Mol	Type	Chain	Res	Atoms	RSCC	RSR	B-factors(Å ²)	Q<0.9
3	MES	A	2308	12/12	0.90	0.17	53,56,58,59	12

6.5 Other polymers [i](#)

There are no such residues in this entry.