



Full wwPDB X-ray Structure Validation Report ⓘ

Sep 8, 2025 – 09:15 PM JST

PDB ID : 4X1P / pdb_00004x1p
Title : The crystal structure of mupain-1-17 in complex with murinised human uPA at pH4.6
Authors : Jiang, L.; Zhao, B.; Xu, P.; Andreasen, P.; Huang, M.
Deposited on : 2014-11-25
Resolution : 1.60 Å(reported)

This is a Full wwPDB X-ray Structure Validation Report for a publicly released PDB entry.

We welcome your comments at validation@mail.wwpdb.org

A user guide is available at

<https://www.wwpdb.org/validation/2017/XrayValidationReportHelp>

with specific help available everywhere you see the ⓘ symbol.

The types of validation reports are described at

<http://www.wwpdb.org/validation/2017/FAQs#types>.

The following versions of software and data (see [references ⓘ](#)) were used in the production of this report:

MolProbity : 4-5-2 with Phenix2.0rc1
Mogul : 1.8.5 (274361), CSD as541be (2020)
Xtriage (Phenix) : 2.0rc1
EDS : 3.0
Percentile statistics : 20231227.v01 (using entries in the PDB archive December 27th 2023)
CCP4 : 9.0.006 (Gargrove)
Density-Fitness : 1.0.12
Ideal geometry (proteins) : Engh & Huber (2001)
Ideal geometry (DNA, RNA) : Parkinson et al. (1996)
Validation Pipeline (wwPDB-VP) : 2.45.1

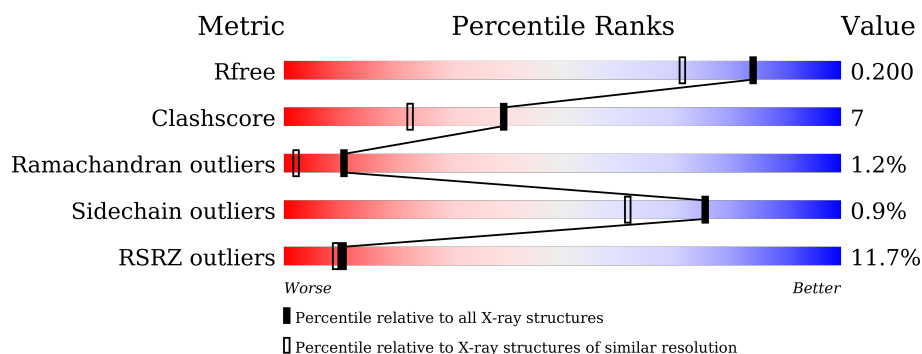
1 Overall quality at a glance

The following experimental techniques were used to determine the structure:

X-RAY DIFFRACTION

The reported resolution of this entry is 1.60 Å.

Percentile scores (ranging between 0-100) for global validation metrics of the entry are shown in the following graphic. The table shows the number of entries on which the scores are based.



Metric	Whole archive (#Entries)	Similar resolution (#Entries, resolution range(Å))
R_{free}	164625	4274 (1.60-1.60)
Clashscore	180529	4682 (1.60-1.60)
Ramachandran outliers	177936	4583 (1.60-1.60)
Sidechain outliers	177891	4582 (1.60-1.60)
RSRZ outliers	164620	4272 (1.60-1.60)

The table below summarises the geometric issues observed across the polymeric chains and their fit to the electron density. The red, orange, yellow and green segments of the lower bar indicate the fraction of residues that contain outliers for ≥ 3 , 2, 1 and 0 types of geometric quality criteria respectively. A grey segment represents the fraction of residues that are not modelled. The numeric value for each fraction is indicated below the corresponding segment, with a dot representing fractions $\leq 5\%$. The upper red bar (where present) indicates the fraction of residues that have poor fit to the electron density. The numeric value is given above the bar.

Mol	Chain	Length	Quality of chain
1	U	247	<div> <div>9%</div> <div>80%</div> <div>17%</div> <div>.</div> </div>
2	P	10	<div> <div>70%</div> <div>60%</div> <div>10%</div> <div>20%</div> <div>10%</div> </div>

The following table lists non-polymeric compounds, carbohydrate monomers and non-standard residues in protein, DNA, RNA chains that are outliers for geometric or electron-density-fit criteria:

Mol	Type	Chain	Res	Chirality	Geometry	Clashes	Electron density
2	DAL	P	6	X	-	-	-

2 Entry composition [i](#)

There are 6 unique types of molecules in this entry. The entry contains 2247 atoms, of which 0 are hydrogens and 0 are deuteriums.

In the tables below, the ZeroOcc column contains the number of atoms modelled with zero occupancy, the AltConf column contains the number of residues with at least one atom in alternate conformation and the Trace column contains the number of residues modelled with at most 2 atoms.

- Molecule 1 is a protein called Urokinase-type plasminogen activator.

Mol	Chain	Residues	Atoms					ZeroOcc	AltConf	Trace
			Total	C	N	O	S			
1	U	247	1953	1234	339	365	15	0	0	0

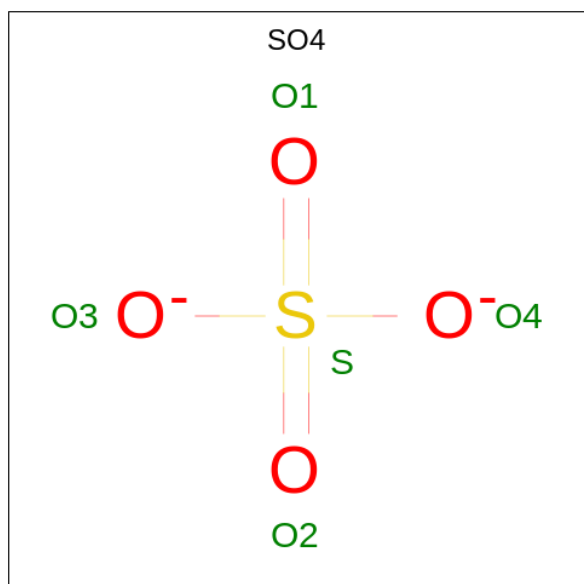
There are 3 discrepancies between the modelled and reference sequences:

Chain	Residue	Modelled	Actual	Comment	Reference
U	99	TYR	HIS	engineered mutation	UNP P00749
U	122	ALA	CYS	engineered mutation	UNP P00749
U	145	GLN	ASN	engineered mutation	UNP P00749

- Molecule 2 is a protein called MUPAIN-1-17.

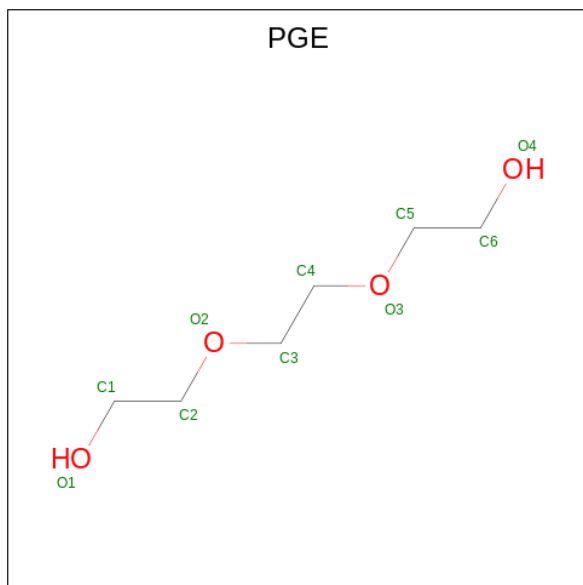
Mol	Chain	Residues	Atoms					ZeroOcc	AltConf	Trace
			Total	C	N	O	S			
2	P	10	81	51	11	16	3	0	1	0

- Molecule 3 is SULFATE ION (CCD ID: SO4) (formula: O₄S).



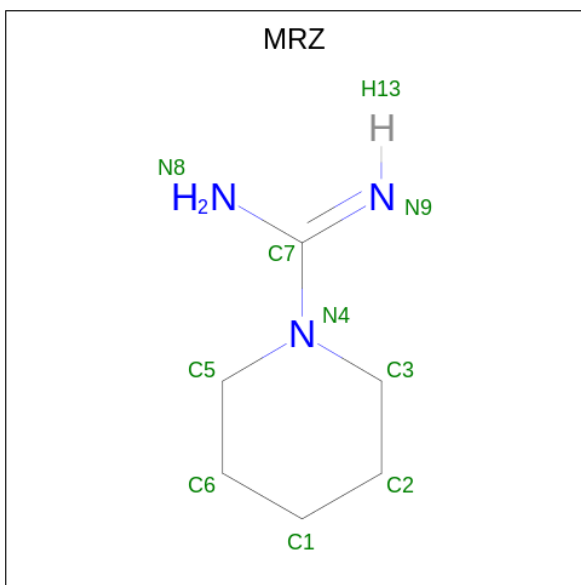
Mol	Chain	Residues	Atoms			ZeroOcc	AltConf
3	U	1	Total	O	S	0	0
			5	4	1		
3	U	1	Total	O	S	0	0
			5	4	1		

- Molecule 4 is TRIETHYLENE GLYCOL (CCD ID: PGE) (formula: $C_6H_{14}O_4$).



Mol	Chain	Residues	Atoms			ZeroOcc	AltConf
4	U	1	Total	C	O	0	0
			10	6	4		
4	U	1	Total	C	O	0	0
			10	6	4		

- Molecule 5 is piperidine-1-carboximidamide (CCD ID: MRZ) (formula: $C_6H_{13}N_3$).



Mol	Chain	Residues	Atoms			ZeroOcc	AltConf
5	P	1	Total	C	N	0	0
			9	6	3		

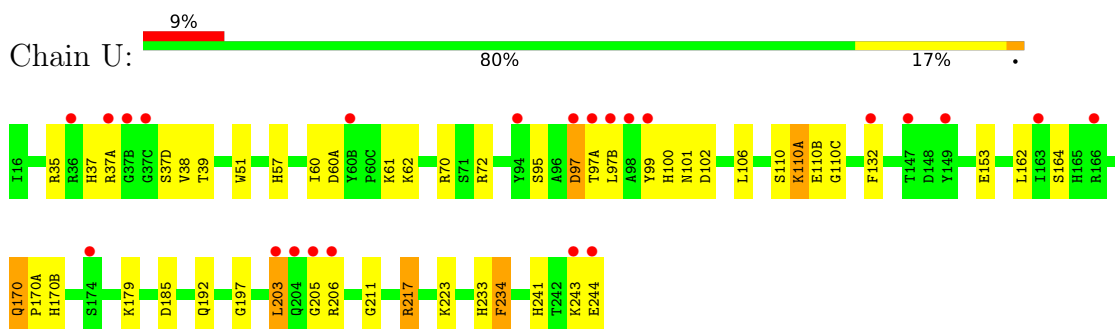
- Molecule 6 is water.

Mol	Chain	Residues	Atoms		ZeroOcc	AltConf
6	U	169	Total	O	0	0
			169	169		
6	P	5	Total	O	0	0
			5	5		

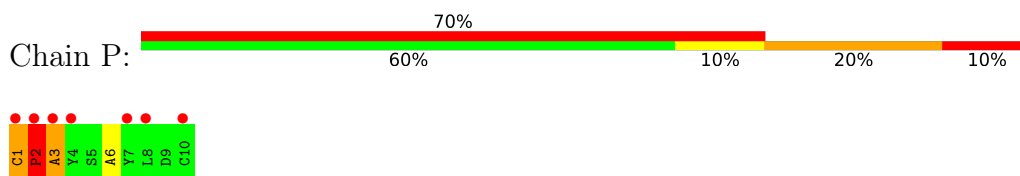
3 Residue-property plots [i](#)

These plots are drawn for all protein, RNA, DNA and oligosaccharide chains in the entry. The first graphic for a chain summarises the proportions of the various outlier classes displayed in the second graphic. The second graphic shows the sequence view annotated by issues in geometry and electron density. Residues are color-coded according to the number of geometric quality criteria for which they contain at least one outlier: green = 0, yellow = 1, orange = 2 and red = 3 or more. A red dot above a residue indicates a poor fit to the electron density ($RSRZ > 2$). Stretches of 2 or more consecutive residues without any outlier are shown as a green connector. Residues present in the sample, but not in the model, are shown in grey.

- Molecule 1: Urokinase-type plasminogen activator



- Molecule 2: MUPAIN-1-17



4 Data and refinement statistics

Property	Value	Source
Space group	H 3	Depositor
Cell constants a, b, c, α , β , γ	121.08Å 121.08Å 43.24Å 90.00° 90.00° 120.00°	Depositor
Resolution (Å)	50.00 – 1.60 50.00 – 1.60	Depositor EDS
% Data completeness (in resolution range)	(Not available) (50.00-1.60) 100.0 (50.00-1.60)	Depositor EDS
R_{merge}	(Not available)	Depositor
R_{sym}	(Not available)	Depositor
$\langle I/\sigma(I) \rangle$ ¹	2.05 (at 1.50Å)	Xtriage
Refinement program	REFMAC 5.6.0117	Depositor
R, R_{free}	0.181 , 0.211 0.199 , 0.200	Depositor DCC
R_{free} test set	1904 reflections (4.99%)	wwPDB-VP
Wilson B-factor (Å ²)	13.9	Xtriage
Anisotropy	0.008	Xtriage
Bulk solvent k_{sol} (e/Å ³), B_{sol} (Å ²)	0.40 , 45.8	EDS
L-test for twinning ²	$\langle L \rangle = 0.50$, $\langle L^2 \rangle = 0.33$	Xtriage
Estimated twinning fraction	0.015 for h,-h-k,-l	Xtriage
F_o, F_c correlation	0.95	EDS
Total number of atoms	2247	wwPDB-VP
Average B, all atoms (Å ²)	23.0	wwPDB-VP

Xtriage's analysis on translational NCS is as follows: *The largest off-origin peak in the Patterson function is 5.56% of the height of the origin peak. No significant pseudotranslation is detected.*

¹Intensities estimated from amplitudes.

²Theoretical values of $\langle |L| \rangle$, $\langle L^2 \rangle$ for acentric reflections are 0.5, 0.333 respectively for untwinned datasets, and 0.375, 0.2 for perfectly twinned datasets.

5 Model quality

5.1 Standard geometry

Bond lengths and bond angles in the following residue types are not validated in this section: DAL, MRZ, PGE, SO4

The Z score for a bond length (or angle) is the number of standard deviations the observed value is removed from the expected value. A bond length (or angle) with $|Z| > 5$ is considered an outlier worth inspection. RMSZ is the root-mean-square of all Z scores of the bond lengths (or angles).

Mol	Chain	Bond lengths		Bond angles	
		RMSZ	$\# Z > 5$	RMSZ	$\# Z > 5$
1	U	1.72	36/2002 (1.8%)	1.46	14/2712 (0.5%)
2	P	1.05	0/76	1.50	4/100 (4.0%)
All	All	1.70	36/2078 (1.7%)	1.46	18/2812 (0.6%)

Chiral center outliers are detected by calculating the chiral volume of a chiral center and verifying if the center is modelled as a planar moiety or with the opposite hand. A planarity outlier is detected by checking planarity of atoms in a peptide group, atoms in a mainchain group or atoms of a sidechain that are expected to be planar.

Mol	Chain	#Chirality outliers	#Planarity outliers
1	U	0	2
2	P	1	1
All	All	1	3

All (36) bond length outliers are listed below:

Mol	Chain	Res	Type	Atoms	Z	Observed(Å)	Ideal(Å)
1	U	110(B)	GLU	C-N	14.06	1.58	1.33
1	U	99	TYR	C-O	-9.15	1.13	1.23
1	U	110(C)	GLY	C-N	8.54	1.53	1.34
1	U	110	SER	C-N	8.13	1.52	1.34
1	U	57	HIS	CE1-NE2	7.75	1.40	1.32
1	U	110(A)	LYS	C-N	7.63	1.51	1.34
1	U	39	THR	C-O	-7.45	1.14	1.23
1	U	185	ASP	C-N	7.39	1.48	1.34
1	U	35	ARG	C-O	-7.37	1.15	1.24
1	U	60	ILE	C-N	7.25	1.50	1.34
1	U	62	LYS	C-N	7.04	1.50	1.34
1	U	233	HIS	ND1-CE1	7.03	1.39	1.32
1	U	95	SER	C-O	-6.88	1.15	1.23
1	U	100	HIS	C-O	-6.71	1.15	1.23

Continued on next page...

Continued from previous page...

Mol	Chain	Res	Type	Atoms	Z	Observed(Å)	Ideal(Å)
1	U	170(B)	HIS	CE1-NE2	6.70	1.39	1.32
1	U	170(B)	HIS	CG-CD2	6.06	1.42	1.35
1	U	60(A)	ASP	C-N	5.97	1.47	1.34
1	U	170	GLN	C-N	5.89	1.45	1.34
1	U	170(A)	PRO	C-N	5.82	1.47	1.34
1	U	37	HIS	CG-ND1	-5.77	1.31	1.38
1	U	51	TRP	N-CA	5.75	1.53	1.46
1	U	211	GLY	CA-C	5.71	1.57	1.51
1	U	234	PHE	CA-CB	5.68	1.62	1.53
1	U	233	HIS	CG-CD2	5.64	1.42	1.35
1	U	100	HIS	CG-ND1	-5.59	1.32	1.38
1	U	38	VAL	C-O	-5.59	1.18	1.24
1	U	101	ASN	CA-C	-5.39	1.46	1.53
1	U	97	ASP	CA-C	-5.38	1.46	1.52
1	U	164	SER	N-CA	5.33	1.52	1.45
1	U	37(D)	SER	C-O	-5.29	1.17	1.23
1	U	234	PHE	N-CA	5.17	1.51	1.46
1	U	192	GLN	C-O	5.08	1.30	1.23
1	U	102	ASP	CA-CB	5.05	1.59	1.52
1	U	51	TRP	CD2-CE2	5.04	1.50	1.41
1	U	197	GLY	N-CA	5.02	1.52	1.44
1	U	217	ARG	C-N	-5.02	1.24	1.33

All (18) bond angle outliers are listed below:

Mol	Chain	Res	Type	Atoms	Z	Observed(°)	Ideal(°)
1	U	110(A)	LYS	O-C-N	-11.70	103.97	122.70
1	U	110(C)	GLY	O-C-N	-11.22	104.75	122.70
1	U	243	LYS	N-CA-C	-8.17	102.45	111.36
1	U	110(A)	LYS	C-N-CA	7.46	140.34	121.70
1	U	110(A)	LYS	N-CA-C	-6.86	103.83	111.71
1	U	62	LYS	O-C-N	-6.12	112.92	122.70
1	U	110(C)	GLY	CA-C-N	6.03	130.45	117.20
1	U	110(A)	LYS	CA-C-N	5.86	130.08	117.20
2	P	2	PRO	CA-C-N	5.59	131.76	121.70
2	P	2	PRO	C-N-CA	5.59	131.76	121.70
1	U	97	ASP	N-CA-C	-5.51	100.98	109.52
1	U	110(C)	GLY	N-CA-C	-5.39	105.52	114.48
1	U	223	LYS	O-C-N	5.31	131.19	122.70
1	U	205	GLY	CA-C-N	-5.19	115.56	122.72
1	U	205	GLY	C-N-CA	-5.19	115.56	122.72
1	U	170	GLN	O-C-N	-5.15	111.32	121.10

Continued on next page...

Continued from previous page...

Mol	Chain	Res	Type	Atoms	Z	Observed(°)	Ideal(°)
2	P	1	CYS	CA-C-N	5.01	126.10	119.84
2	P	1	CYS	C-N-CA	5.01	126.10	119.84

All (1) chirality outliers are listed below:

Mol	Chain	Res	Type	Atom
2	P	6	DAL	CA

All (3) planarity outliers are listed below:

Mol	Chain	Res	Type	Group
2	P	6	DAL	Mainchain
1	U	110(A)	LYS	Mainchain
1	U	170	GLN	Mainchain

5.2 Too-close contacts [i](#)

In the following table, the Non-H and H(model) columns list the number of non-hydrogen atoms and hydrogen atoms in the chain respectively. The H(added) column lists the number of hydrogen atoms added and optimized by MolProbity. The Clashes column lists the number of clashes within the asymmetric unit, whereas Symm-Clashes lists symmetry-related clashes.

Mol	Chain	Non-H	H(model)	H(added)	Clashes	Symm-Clashes
1	U	1953	0	1903	22	0
2	P	81	0	66	5	0
3	U	10	0	0	0	0
4	U	20	0	28	0	0
5	P	9	0	11	0	0
6	P	5	0	0	0	0
6	U	169	0	0	7	0
All	All	2247	0	2008	27	0

The all-atom clashscore is defined as the number of clashes found per 1000 atoms (including hydrogen atoms). The all-atom clashscore for this structure is 7.

All (27) close contacts within the same asymmetric unit are listed below, sorted by their clash magnitude.

Atom-1	Atom-2	Interatomic distance (Å)	Clash overlap (Å)
1:U:37(A):ARG:H	1:U:37(A):ARG:CD	1.52	1.23
1:U:37(A):ARG:HD3	1:U:37(A):ARG:N	1.63	1.13

Continued on next page...

Continued from previous page...

Atom-1	Atom-2	Interatomic distance (Å)	Clash overlap (Å)
1:U:37(A):ARG:H	1:U:37(A):ARG:HD3	0.80	0.95
1:U:206:ARG:HG2	6:U:567:HOH:O	1.70	0.90
2:P:2:PRO:HA	2:P:3:ALA:HB2	1.59	0.81
1:U:72:ARG:NH2	1:U:153:GLU:HG3	2.02	0.74
1:U:72:ARG:NH2	1:U:153:GLU:CG	2.52	0.73
1:U:37(A):ARG:CD	1:U:37(A):ARG:N	2.34	0.71
1:U:97:ASP:O	1:U:97(B):LEU:N	2.28	0.65
1:U:72:ARG:CZ	1:U:153:GLU:HG3	2.27	0.63
2:P:2:PRO:HA	2:P:3:ALA:CB	2.31	0.60
1:U:72:ARG:NH2	1:U:153:GLU:HG2	2.17	0.59
1:U:97:ASP:OD1	1:U:97:ASP:C	2.49	0.55
2:P:2:PRO:CA	2:P:3:ALA:HB2	2.36	0.53
1:U:70:ARG:CG	6:U:402:HOH:O	2.58	0.52
1:U:97:ASP:O	1:U:97:ASP:OD1	2.29	0.50
1:U:179:LYS:HE2	1:U:234:PHE:CZ	2.48	0.49
2:P:2:PRO:CA	2:P:3:ALA:CB	2.91	0.49
1:U:70:ARG:HG2	6:U:402:HOH:O	2.13	0.48
1:U:241:HIS:O	1:U:244:GLU:HB2	2.13	0.48
1:U:217:ARG:HD2	6:U:510:HOH:O	2.18	0.43
1:U:70:ARG:HG3	6:U:402:HOH:O	2.18	0.43
2:P:1:CYS:O	2:P:2:PRO:O	2.37	0.42
1:U:132:PHE:CD1	1:U:132:PHE:C	2.98	0.41
1:U:106:LEU:HD12	1:U:106:LEU:N	2.35	0.41
1:U:61:LYS:HB2	6:U:422:HOH:O	2.21	0.41
1:U:203:LEU:HD11	6:U:537:HOH:O	2.20	0.40

There are no symmetry-related clashes.

5.3 Torsion angles

5.3.1 Protein backbone

In the following table, the Percentiles column shows the percent Ramachandran outliers of the chain as a percentile score with respect to all X-ray entries followed by that with respect to entries of similar resolution.

The Analysed column shows the number of residues for which the backbone conformation was analysed, and the total number of residues.

Mol	Chain	Analysed	Favoured	Allowed	Outliers	Percentiles
1	U	245/247 (99%)	234 (96%)	10 (4%)	1 (0%)	30 14

Continued on next page...

Continued from previous page...

Mol	Chain	Analysed	Favoured	Allowed	Outliers	Percentiles	
2	P	7/10 (70%)	4 (57%)	1 (14%)	2 (29%)	0	0
All	All	252/257 (98%)	238 (94%)	11 (4%)	3 (1%)	11	2

All (3) Ramachandran outliers are listed below:

Mol	Chain	Res	Type
1	U	97(A)	THR
2	P	2	PRO
2	P	3	ALA

5.3.2 Protein sidechains ⓘ

In the following table, the Percentiles column shows the percent sidechain outliers of the chain as a percentile score with respect to all X-ray entries followed by that with respect to entries of similar resolution.

The Analysed column shows the number of residues for which the sidechain conformation was analysed, and the total number of residues.

Mol	Chain	Analysed	Rotameric	Outliers	Percentiles	
1	U	215/215 (100%)	213 (99%)	2 (1%)	75	62
2	P	9/8 (112%)	9 (100%)	0	100	100
All	All	224/223 (100%)	222 (99%)	2 (1%)	75	62

All (2) residues with a non-rotameric sidechain are listed below:

Mol	Chain	Res	Type
1	U	162	LEU
1	U	203	LEU

Sometimes sidechains can be flipped to improve hydrogen bonding and reduce clashes. All (3) such sidechains are listed below:

Mol	Chain	Res	Type
1	U	87	ASN
1	U	113	GLN
1	U	128	ASN

5.3.3 RNA ⓘ

There are no RNA molecules in this entry.

5.4 Non-standard residues in protein, DNA, RNA chains ⓘ

1 non-standard protein/DNA/RNA residue is modelled in this entry.

In the following table, the Chirals column lists the number of chiral outliers, the number of chiral centers analysed, the number of these observed in the model and the number defined in the Chemical Component Dictionary. Similar counts are reported in the Torsion and Rings columns. '-' means no outliers of that kind were identified.

Mol	Type	Chain	Res	Link	Chirals	Torsions	Rings
2	DAL	P	6	2	1/1/1/2	-	-

There are no bond length outliers.

There are no bond angle outliers.

All (1) chirality outliers are listed below:

Mol	Chain	Res	Type	Atom
2	P	6	DAL	CA

There are no torsion outliers.

There are no ring outliers.

No monomer is involved in short contacts.

5.5 Carbohydrates ⓘ

There are no oligosaccharides in this entry.

5.6 Ligand geometry ⓘ

5 ligands are modelled in this entry.

In the following table, the Counts columns list the number of bonds (or angles) for which Mogul statistics could be retrieved, the number of bonds (or angles) that are observed in the model and the number of bonds (or angles) that are defined in the Chemical Component Dictionary. The Link column lists molecule types, if any, to which the group is linked. The Z score for a bond length (or angle) is the number of standard deviations the observed value is removed from the expected value. A bond length (or angle) with $|Z| > 2$ is considered an outlier worth inspection. RMSZ is the root-mean-square of all Z scores of the bond lengths (or angles).

Mol	Type	Chain	Res	Link	Bond lengths			Bond angles		
					Counts	RMSZ	# Z > 2	Counts	RMSZ	# Z > 2
3	SO4	U	302	-	4,4,4	0.50	0	6,6,6	0.75	0
4	PGE	U	303	-	9,9,9	0.65	0	8,8,8	0.95	0
4	PGE	U	304	-	9,9,9	0.72	0	8,8,8	0.69	0
5	MRZ	P	100	-	9,9,9	2.15	3 (33%)	10,11,11	3.78	4 (40%)
3	SO4	U	301	-	4,4,4	0.18	0	6,6,6	1.22	1 (16%)

In the following table, the Chirals column lists the number of chiral outliers, the number of chiral centers analysed, the number of these observed in the model and the number defined in the Chemical Component Dictionary. Similar counts are reported in the Torsion and Rings columns. '-' means no outliers of that kind were identified.

Mol	Type	Chain	Res	Link	Chirals	Torsions	Rings
4	PGE	U	303	-	-	3/7/7/7	-
4	PGE	U	304	-	-	3/7/7/7	-
5	MRZ	P	100	-	-	0/4/12/12	0/1/1/1

All (3) bond length outliers are listed below:

Mol	Chain	Res	Type	Atoms	Z	Observed(Å)	Ideal(Å)
5	P	100	MRZ	C7-N9	4.41	1.41	1.29
5	P	100	MRZ	C7-N4	3.51	1.43	1.35
5	P	100	MRZ	C7-N8	3.01	1.41	1.34

All (5) bond angle outliers are listed below:

Mol	Chain	Res	Type	Atoms	Z	Observed(°)	Ideal(°)
5	P	100	MRZ	C3-N4-C5	8.46	128.91	112.62
5	P	100	MRZ	C1-C2-C3	7.35	125.39	111.19
5	P	100	MRZ	C1-C6-C5	2.57	116.16	111.19
5	P	100	MRZ	C3-N4-C7	-2.33	112.28	118.91
3	U	301	SO4	O3-S-O2	-2.02	98.78	109.31

There are no chirality outliers.

All (6) torsion outliers are listed below:

Mol	Chain	Res	Type	Atoms
4	U	303	PGE	C3-C4-O3-C5
4	U	304	PGE	C3-C4-O3-C5
4	U	303	PGE	O2-C3-C4-O3
4	U	304	PGE	C1-C2-O2-C3

Continued on next page...

Continued from previous page...

Mol	Chain	Res	Type	Atoms
4	U	303	PGE	C6-C5-O3-C4
4	U	304	PGE	O2-C3-C4-O3

There are no ring outliers.

No monomer is involved in short contacts.

5.7 Other polymers [i](#)

There are no such residues in this entry.

5.8 Polymer linkage issues [i](#)

There are no chain breaks in this entry.

6 Fit of model and data

6.1 Protein, DNA and RNA chains

In the following table, the column labelled ‘#RSRZ > 2’ contains the number (and percentage) of RSRZ outliers, followed by percent RSRZ outliers for the chain as percentile scores relative to all X-ray entries and entries of similar resolution. The OWAB column contains the minimum, median, 95th percentile and maximum values of the occupancy-weighted average B-factor per residue. The column labelled ‘Q < 0.9’ lists the number of (and percentage) of residues with an average occupancy less than 0.9.

Mol	Chain	Analysed	<RSRZ>	#RSRZ>2		OWAB(Å ²)	Q<0.9
1	U	247/247 (100%)	0.60	23 (9%)	16 14	11, 18, 41, 75	0
2	P	9/10 (90%)	3.44	7 (77%)	0 0	21, 35, 68, 90	1 (11%)
All	All	256/257 (99%)	0.70	30 (11%)	10 9	11, 19, 45, 90	1 (0%)

All (30) RSRZ outliers are listed below:

Mol	Chain	Res	Type	RSRZ
1	U	97(A)	THR	6.1
2	P	2	PRO	5.9
2	P	3	ALA	5.0
1	U	99	TYR	4.9
2	P	10[A]	CYS	4.4
2	P	4	TYR	4.3
2	P	1	CYS	4.1
1	U	205	GLY	3.5
1	U	97(B)	LEU	3.4
1	U	203	LEU	3.3
1	U	37(B)	GLY	3.3
1	U	244	GLU	3.3
1	U	166	ARG	3.3
2	P	7	TYR	3.2
1	U	206	ARG	3.1
1	U	37(C)	GLY	3.1
1	U	149	TYR	3.0
1	U	243	LYS	2.9
1	U	97	ASP	2.9
1	U	204	GLN	2.8
1	U	98	ALA	2.8
1	U	163	ILE	2.7
1	U	94	TYR	2.7
1	U	37(A)	ARG	2.7

Continued on next page...

Continued from previous page...

Mol	Chain	Res	Type	RSRZ
2	P	8	LEU	2.7
1	U	132	PHE	2.6
1	U	174	SER	2.3
1	U	36	ARG	2.3
1	U	147	THR	2.2
1	U	60(B)	TYR	2.1

6.2 Non-standard residues in protein, DNA, RNA chains [i](#)

In the following table, the Atoms column lists the number of modelled atoms in the group and the number defined in the chemical component dictionary. The B-factors column lists the minimum, median, 95th percentile and maximum values of B factors of atoms in the group. The column labelled 'Q< 0.9' lists the number of atoms with occupancy less than 0.9.

Mol	Type	Chain	Res	Atoms	RSCC	RSR	B-factors(Å ²)	Q<0.9
2	DAL	P	6	5/6	0.87	0.12	18,19,20,21	0

6.3 Carbohydrates [i](#)

There are no oligosaccharides in this entry.

6.4 Ligands [i](#)

In the following table, the Atoms column lists the number of modelled atoms in the group and the number defined in the chemical component dictionary. The B-factors column lists the minimum, median, 95th percentile and maximum values of B factors of atoms in the group. The column labelled 'Q< 0.9' lists the number of atoms with occupancy less than 0.9.

Mol	Type	Chain	Res	Atoms	RSCC	RSR	B-factors(Å ²)	Q<0.9
4	PGE	U	304	10/10	0.68	0.26	37,68,70,74	0
4	PGE	U	303	10/10	0.72	0.23	41,64,75,75	0
3	SO4	U	302	5/5	0.87	0.13	30,30,34,35	0
5	MRZ	P	100	9/9	0.90	0.11	14,16,18,22	0
3	SO4	U	301	5/5	0.96	0.09	21,22,23,30	0

6.5 Other polymers [i](#)

There are no such residues in this entry.