



Full wwPDB X-ray Structure Validation Report ⓘ

Mar 6, 2026 – 06:28 PM UTC

PDB ID : 5H1T / pdb_00005h1t
Title : Complex structure of TRIM24 PHD-bromodomain and inhibitor 1
Authors : Liu, J.
Deposited on : 2016-10-11
Resolution : 1.95 Å(reported)

This is a Full wwPDB X-ray Structure Validation Report for a publicly released PDB entry.

We welcome your comments at validation@mail.wwpdb.org

A user guide is available at

<https://www.wwpdb.org/validation/2017/XrayValidationReportHelp>

with specific help available everywhere you see the ⓘ symbol.

The types of validation reports are described at

<http://www.wwpdb.org/validation/2017/FAQs#types>.

The following versions of software and data (see [references ⓘ](#)) were used in the production of this report:

MolProbity : 4-5-2 with Phenix2.0
Mogul : 2022.3.0, CSD as543be (2022)
Xtrriage (Phenix) : 2.0
EDS : 3.0
Percentile statistics : 20250101.v01 (using entries in the PDB archive January 1st 2025)
CCP4 : 9.0.010 (Gargrove)
Density-Fitness : 1.0.12
Ideal geometry (proteins) : Engh & Huber (2001)
Ideal geometry (DNA, RNA) : Parkinson et al. (1996)
Validation Pipeline (wwPDB-VP) : 2.49

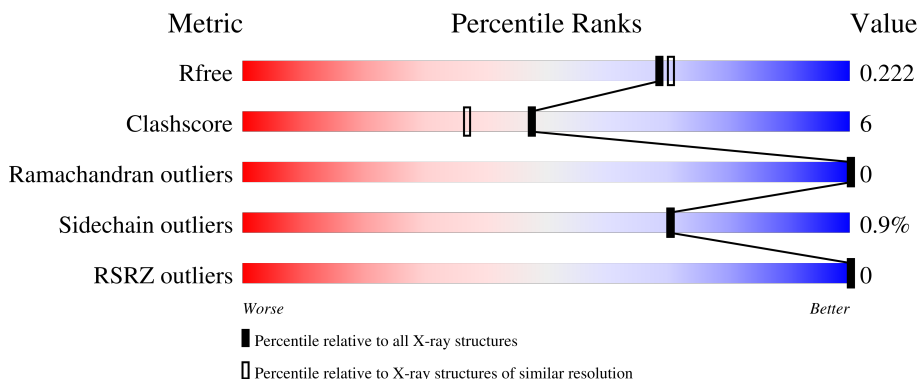
1 Overall quality at a glance

The following experimental techniques were used to determine the structure:

X-RAY DIFFRACTION

The reported resolution of this entry is 1.95 Å.

Percentile scores (ranging between 0-100) for global validation metrics of the entry are shown in the following graphic. The table shows the number of entries on which the scores are based.



Metric	Whole archive (#Entries)	Similar resolution (#Entries, resolution range(Å))
R_{free}	180053	3494 (1.96-1.96)
Clashscore	190562	3612 (1.96-1.96)
Ramachandran outliers	187476	3587 (1.96-1.96)
Sidechain outliers	187428	3587 (1.96-1.96)
RSRZ outliers	180081	3495 (1.96-1.96)

The table below summarises the geometric issues observed across the polymeric chains and their fit to the electron density. The red, orange, yellow and green segments of the lower bar indicate the fraction of residues that contain outliers for ≥ 3 , 2, 1 and 0 types of geometric quality criteria respectively. A grey segment represents the fraction of residues that are not modelled. The numeric value for each fraction is indicated below the corresponding segment, with a dot representing fractions $\leq 5\%$. The upper red bar (where present) indicates the fraction of residues that have poor fit to the electron density. The numeric value is given above the bar.

Mol	Chain	Length	Quality of chain
1	A	183	 80% 14% 6%
1	B	183	 86% 10% ..
1	C	183	 85% 12% ..
1	D	183	 83% 11% 6%

The following table lists non-polymeric compounds, carbohydrate monomers and non-standard

residues in protein, DNA, RNA chains that are outliers for geometric or electron-density-fit criteria:

Mol	Type	Chain	Res	Chirality	Geometry	Clashes	Electron density
4	DMS	A	1104	-	-	X	-

2 Entry composition [i](#)

There are 5 unique types of molecules in this entry. The entry contains 6010 atoms, of which 12 are hydrogens and 0 are deuteriums.

In the tables below, the ZeroOcc column contains the number of atoms modelled with zero occupancy, the AltConf column contains the number of residues with at least one atom in alternate conformation and the Trace column contains the number of residues modelled with at most 2 atoms.

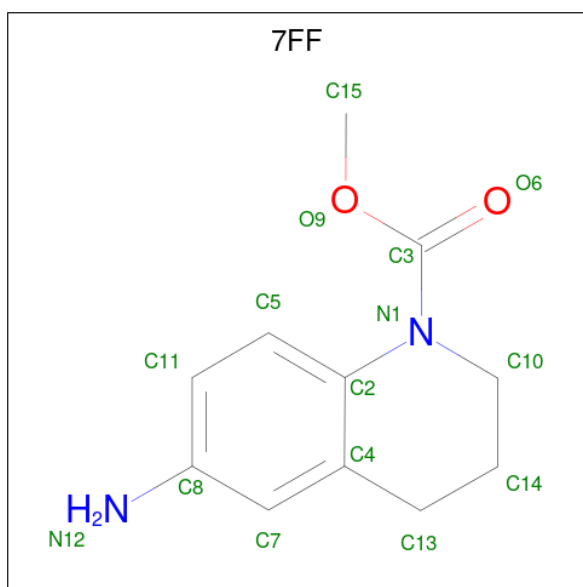
- Molecule 1 is a protein called Transcription intermediary factor 1-alpha.

Mol	Chain	Residues	Atoms					ZeroOcc	AltConf	Trace
			Total	C	N	O	S			
1	A	172	1396	898	223	261	14	0	0	0
1	B	178	1446	927	229	275	15	0	0	0
1	C	178	1442	925	229	273	15	0	0	0
1	D	172	1396	897	222	263	14	0	0	0

- Molecule 2 is ZINC ION (CCD ID: ZN) (formula: Zn).

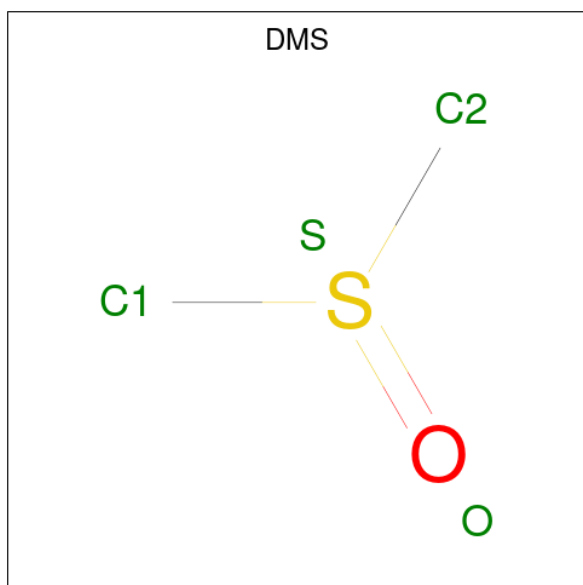
Mol	Chain	Residues	Atoms		ZeroOcc	AltConf
2	A	2	Total	Zn	0	0
			2	2		
2	B	2	Total	Zn	0	0
			2	2		
2	C	2	Total	Zn	0	0
			2	2		
2	D	2	Total	Zn	0	0
			2	2		

- Molecule 3 is methyl 6-azanyl-3,4-dihydro-2H-quinoline-1-carboxylate (CCD ID: 7FF) (formula: C₁₁H₁₄N₂O₂).



Mol	Chain	Residues	Atoms				ZeroOcc	AltConf
			Total	C	N	O		
3	A	1	Total	C	N	O	0	0
			15	11	2	2		
3	B	1	Total	C	N	O	0	0
			15	11	2	2		
3	C	1	Total	C	N	O	0	0
			15	11	2	2		
3	D	1	Total	C	N	O	0	0
			15	11	2	2		

- Molecule 4 is DIMETHYL SULFOXIDE (CCD ID: DMS) (formula: C₂H₆OS).



Mol	Chain	Residues	Atoms					ZeroOcc	AltConf
4	A	1	Total	C	H	O	S	0	0
			10	2	6	1	1		
4	B	1	Total	C	H	O	S	0	0
			10	2	6	1	1		

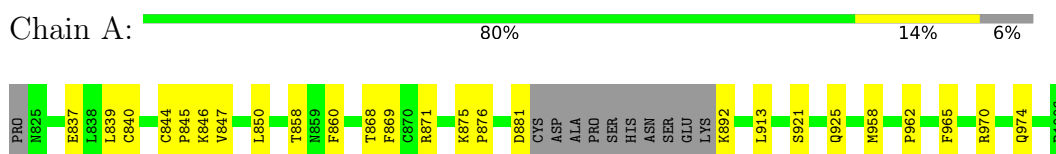
- Molecule 5 is water.

Mol	Chain	Residues	Atoms		ZeroOcc	AltConf
5	A	53	Total	O	0	0
			53	53		
5	B	71	Total	O	0	0
			71	71		
5	C	74	Total	O	0	0
			74	74		
5	D	44	Total	O	0	0
			44	44		

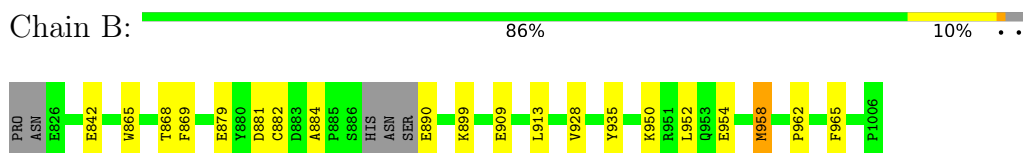
3 Residue-property plots [i](#)

These plots are drawn for all protein, RNA, DNA and oligosaccharide chains in the entry. The first graphic for a chain summarises the proportions of the various outlier classes displayed in the second graphic. The second graphic shows the sequence view annotated by issues in geometry and electron density. Residues are color-coded according to the number of geometric quality criteria for which they contain at least one outlier: green = 0, yellow = 1, orange = 2 and red = 3 or more. A red dot above a residue indicates a poor fit to the electron density ($RSRZ > 2$). Stretches of 2 or more consecutive residues without any outlier are shown as a green connector. Residues present in the sample, but not in the model, are shown in grey.

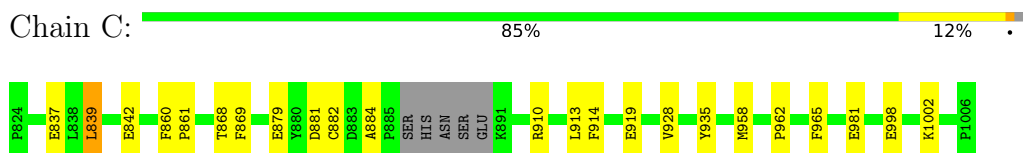
- Molecule 1: Transcription intermediary factor 1-alpha



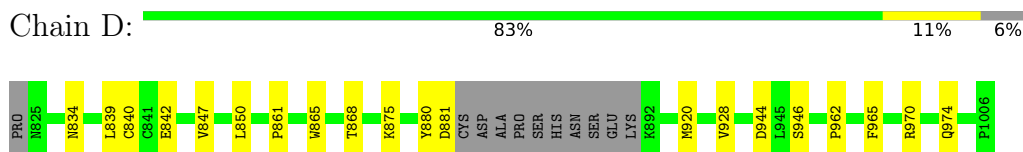
- Molecule 1: Transcription intermediary factor 1-alpha



- Molecule 1: Transcription intermediary factor 1-alpha



- Molecule 1: Transcription intermediary factor 1-alpha



4 Data and refinement statistics i

Property	Value	Source
Space group	P 1	Depositor
Cell constants a, b, c, α , β , γ	36.73Å 48.61Å 123.45Å 86.56° 81.47° 67.81°	Depositor
Resolution (Å)	31.40 – 1.95 31.40 – 1.95	Depositor EDS
% Data completeness (in resolution range)	92.3 (31.40-1.95) 92.3 (31.40-1.95)	Depositor EDS
R_{merge}	0.09	Depositor
R_{sym}	(Not available)	Depositor
$\langle I/\sigma(I) \rangle$ ¹	2.17 (at 1.95Å)	Xtriage
Refinement program	PHENIX (1.10_2155: ???)	Depositor
R, R_{free}	0.177 , 0.220 0.182 , 0.222	Depositor DCC
R_{free} test set	2680 reflections (4.71%)	wwPDB-VP
Wilson B-factor (Å ²)	24.6	Xtriage
Anisotropy	0.398	Xtriage
Bulk solvent k_{sol} (e/Å ³), B_{sol} (Å ²)	0.38 , 31.5	EDS
L-test for twinning ²	$\langle L \rangle = 0.51$, $\langle L^2 \rangle = 0.34$	Xtriage
Estimated twinning fraction	0.478 for h,h-k,h-l 0.017 for -h,-h+k,-l 0.018 for -h,-k,-h+l	Xtriage
F_o, F_c correlation	0.97	EDS
Total number of atoms	6010	wwPDB-VP
Average B, all atoms (Å ²)	36.0	wwPDB-VP

Xtriage's analysis on translational NCS is as follows: *The largest off-origin peak in the Patterson function is 8.69% of the height of the origin peak. No significant pseudotranslation is detected.*

¹Intensities estimated from amplitudes.

²Theoretical values of $\langle |L| \rangle$, $\langle L^2 \rangle$ for acentric reflections are 0.5, 0.333 respectively for untwinned datasets, and 0.375, 0.2 for perfectly twinned datasets.

5 Model quality [i](#)

5.1 Standard geometry [i](#)

Bond lengths and bond angles in the following residue types are not validated in this section: ZN, 7FF, DMS

The Z score for a bond length (or angle) is the number of standard deviations the observed value is removed from the expected value. A bond length (or angle) with $|Z| > 5$ is considered an outlier worth inspection. RMSZ is the root-mean-square of all Z scores of the bond lengths (or angles).

Mol	Chain	Bond lengths		Bond angles	
		RMSZ	# Z >5	RMSZ	# Z >5
1	A	0.31	0/1431	0.49	0/1936
1	B	0.37	0/1482	0.54	0/2004
1	C	0.36	0/1479	0.52	0/2002
1	D	0.31	0/1431	0.48	0/1937
All	All	0.34	0/5823	0.50	0/7879

There are no bond length outliers.

There are no bond angle outliers.

There are no chirality outliers.

There are no planarity outliers.

5.2 Too-close contacts [i](#)

In the following table, the Non-H and H(model) columns list the number of non-hydrogen atoms and hydrogen atoms in the chain respectively. The H(added) column lists the number of hydrogen atoms added and optimized by MolProbity. The Clashes column lists the number of clashes within the asymmetric unit, whereas Symm-Clashes lists symmetry-related clashes.

Mol	Chain	Non-H	H(model)	H(added)	Clashes	Symm-Clashes
1	A	1396	0	1356	22	0
1	B	1446	0	1403	12	0
1	C	1442	0	1395	15	0
1	D	1396	0	1349	15	0
2	A	2	0	0	0	0
2	B	2	0	0	0	0
2	C	2	0	0	0	0
2	D	2	0	0	0	0
3	A	15	0	0	0	0

Continued on next page...

Continued from previous page...

Mol	Chain	Non-H	H(model)	H(added)	Clashes	Symm-Clashes
3	B	15	0	0	0	0
3	C	15	0	0	0	0
3	D	15	0	0	1	0
4	A	4	6	6	6	0
4	B	4	6	6	0	0
5	A	53	0	0	0	0
5	B	71	0	0	1	1
5	C	74	0	0	4	1
5	D	44	0	0	0	0
All	All	5998	12	5515	63	1

The all-atom clashscore is defined as the number of clashes found per 1000 atoms (including hydrogen atoms). The all-atom clashscore for this structure is 6.

All (63) close contacts within the same asymmetric unit are listed below, sorted by their clash magnitude.

Atom-1	Atom-2	Interatomic distance (Å)	Clash overlap (Å)
1:D:920:MET:HA	1:D:920:MET:HE2	1.45	0.98
1:B:958:MET:HG3	5:B:1205:HOH:O	1.78	0.82
1:C:879:GLU:OE1	1:C:884:ALA:HA	1.80	0.82
1:A:839:LEU:HD11	1:A:850:LEU:HD23	1.61	0.82
1:A:846:LYS:NZ	4:A:1104:DMS:S	2.53	0.82
1:C:837:GLU:HG3	1:C:860:PHE:CZ	2.23	0.73
1:A:846:LYS:HZ1	4:A:1104:DMS:H11	1.55	0.70
1:D:842:GLU:HG2	1:D:865:TRP:O	1.93	0.68
1:A:858:THR:HG22	1:A:881:ASP:CG	2.19	0.67
1:A:844:CYS:HB2	1:A:845:PRO:HD2	1.81	0.61
1:C:842:GLU:HG2	5:C:1256:HOH:O	2.01	0.61
1:A:839:LEU:CD1	1:A:850:LEU:HD23	2.32	0.60
1:A:846:LYS:NZ	4:A:1104:DMS:H11	2.17	0.59
1:D:880:TYR:O	1:D:881:ASP:HB3	2.03	0.59
1:A:846:LYS:HZ1	4:A:1104:DMS:C1	2.18	0.57
1:C:958:MET:HG2	5:C:1211:HOH:O	2.04	0.57
1:B:842:GLU:HG2	1:B:865:TRP:O	2.06	0.56
1:A:840:CYS:HA	1:A:847:VAL:HG12	1.88	0.55
1:D:920:MET:HA	1:D:920:MET:CE	2.30	0.55
1:A:846:LYS:NZ	4:A:1104:DMS:C1	2.71	0.54
1:B:890:GLU:N	1:B:890:GLU:OE1	2.41	0.54
1:A:839:LEU:HD11	1:A:850:LEU:CD2	2.36	0.53
1:A:837:GLU:HB3	1:A:860:PHE:CZ	2.44	0.53
1:D:880:TYR:O	1:D:881:ASP:CB	2.55	0.53

Continued on next page...

Continued from previous page...

Atom-1	Atom-2	Interatomic distance (Å)	Clash overlap (Å)
1:D:962:PRO:HA	1:D:965:PHE:CE2	2.44	0.53
1:B:950:LYS:O	1:B:954:GLU:HG3	2.10	0.52
1:C:962:PRO:HA	1:C:965:PHE:CE2	2.45	0.51
1:D:944:ASP:OD2	1:D:946:SER:OG	2.27	0.51
1:C:928:VAL:HG21	1:C:935:TYR:CZ	2.47	0.50
1:C:919:GLU:HG3	5:C:1254:HOH:O	2.10	0.50
1:B:928:VAL:HG21	1:B:935:TYR:CZ	2.47	0.50
1:C:981:GLU:HG2	5:C:1250:HOH:O	2.10	0.50
1:A:869:PHE:CZ	1:A:913:LEU:HG	2.48	0.49
1:D:928:VAL:HG22	3:D:1103:7FF:C15	2.43	0.48
1:D:920:MET:HE2	1:D:920:MET:CA	2.30	0.48
1:C:998:GLU:O	1:C:1002:LYS:HG3	2.14	0.47
1:A:921:SER:O	1:A:925:GLN:HG3	2.14	0.47
1:D:840:CYS:HA	1:D:847:VAL:HG12	1.96	0.47
1:A:962:PRO:HA	1:A:965:PHE:CE2	2.50	0.47
1:D:970:ARG:O	1:D:974:GLN:HG3	2.14	0.46
1:A:958:MET:HE3	1:A:958:MET:HB2	1.66	0.46
1:A:970:ARG:O	1:A:974:GLN:HG3	2.17	0.45
1:B:881:ASP:OD1	1:B:882:CYS:N	2.50	0.44
1:A:875:LYS:HG3	1:A:875:LYS:O	2.15	0.44
1:B:879:GLU:OE2	1:B:884:ALA:HA	2.17	0.44
1:C:837:GLU:OE1	1:D:834:ASN:ND2	2.51	0.44
1:B:899:LYS:HE2	1:B:899:LYS:HB3	1.75	0.44
1:A:858:THR:HG22	1:A:881:ASP:OD1	2.17	0.44
1:B:909:GLU:HG3	1:B:952:LEU:HD21	2.00	0.44
1:D:839:LEU:CD2	1:D:861:PRO:HD3	2.48	0.44
1:D:839:LEU:HG	1:D:850:LEU:HD23	1.99	0.44
1:C:839:LEU:HD21	1:C:861:PRO:HD3	2.01	0.43
1:A:871:ARG:HD2	1:A:876:PRO:HB3	2.01	0.43
1:B:869:PHE:CZ	1:B:913:LEU:HG	2.54	0.42
1:D:875:LYS:HB3	1:D:875:LYS:HE2	1.85	0.42
1:A:892:LYS:N	1:A:892:LYS:HD3	2.35	0.41
1:C:910:ARG:HG2	1:C:914:PHE:CE2	2.55	0.41
1:A:846:LYS:NZ	4:A:1104:DMS:H21	2.35	0.41
1:B:958:MET:HB2	1:B:958:MET:HE2	1.70	0.41
1:C:869:PHE:CZ	1:C:913:LEU:HG	2.56	0.41
1:B:962:PRO:HA	1:B:965:PHE:CE2	2.56	0.41
1:C:881:ASP:OD1	1:C:882:CYS:N	2.55	0.40
1:C:839:LEU:CD2	1:C:861:PRO:HD3	2.52	0.40

All (1) symmetry-related close contacts are listed below. The label for Atom-2 includes the symmetry operator and encoded unit-cell translations to be applied.

Atom-1	Atom-2	Interatomic distance (Å)	Clash overlap (Å)
5:B:1264:HOH:O	5:C:1206:HOH:O[1_455]	2.01	0.19

5.3 Torsion angles [i](#)

5.3.1 Protein backbone [i](#)

In the following table, the Percentiles column shows the percent Ramachandran outliers of the chain as a percentile score with respect to all X-ray entries followed by that with respect to entries of similar resolution.

The Analysed column shows the number of residues for which the backbone conformation was analysed, and the total number of residues.

Mol	Chain	Analysed	Favoured	Allowed	Outliers	Percentiles	
1	A	168/183 (92%)	166 (99%)	2 (1%)	0	100	100
1	B	174/183 (95%)	173 (99%)	1 (1%)	0	100	100
1	C	174/183 (95%)	173 (99%)	1 (1%)	0	100	100
1	D	168/183 (92%)	167 (99%)	1 (1%)	0	100	100
All	All	684/732 (93%)	679 (99%)	5 (1%)	0	100	100

There are no Ramachandran outliers to report.

5.3.2 Protein sidechains [i](#)

In the following table, the Percentiles column shows the percent sidechain outliers of the chain as a percentile score with respect to all X-ray entries followed by that with respect to entries of similar resolution.

The Analysed column shows the number of residues for which the sidechain conformation was analysed, and the total number of residues.

Mol	Chain	Analysed	Rotameric	Outliers	Percentiles	
1	A	159/171 (93%)	158 (99%)	1 (1%)	78	79
1	B	166/171 (97%)	164 (99%)	2 (1%)	63	61
1	C	165/171 (96%)	163 (99%)	2 (1%)	63	61
1	D	159/171 (93%)	158 (99%)	1 (1%)	78	79
All	All	649/684 (95%)	643 (99%)	6 (1%)	70	70

All (6) residues with a non-rotameric sidechain are listed below:

Mol	Chain	Res	Type
1	A	868	THR
1	B	868	THR
1	B	958	MET
1	C	839	LEU
1	C	868	THR
1	D	868	THR

Sometimes sidechains can be flipped to improve hydrogen bonding and reduce clashes. All (2) such sidechains are listed below:

Mol	Chain	Res	Type
1	B	834	ASN
1	B	974	GLN

5.3.3 RNA [i](#)

There are no RNA molecules in this entry.

5.4 Non-standard residues in protein, DNA, RNA chains [i](#)

There are no non-standard protein/DNA/RNA residues in this entry.

5.5 Carbohydrates [i](#)

There are no oligosaccharides in this entry.

5.6 Ligand geometry [i](#)

Of 14 ligands modelled in this entry, 8 are monoatomic - leaving 6 for Mogul analysis.

In the following table, the Counts columns list the number of bonds (or angles) for which Mogul statistics could be retrieved, the number of bonds (or angles) that are observed in the model and the number of bonds (or angles) that are defined in the Chemical Component Dictionary. The Link column lists molecule types, if any, to which the group is linked. The Z score for a bond length (or angle) is the number of standard deviations the observed value is removed from the expected value. A bond length (or angle) with $|Z| > 2$ is considered an outlier worth inspection. RMSZ is the root-mean-square of all Z scores of the bond lengths (or angles).

Mol	Type	Chain	Res	Link	Bond lengths			Bond angles		
					Counts	RMSZ	$\# Z > 2$	Counts	RMSZ	$\# Z > 2$
4	DMS	B	1104	-	3,3,3	0.74	0	3,3,3	0.59	0

Mol	Type	Chain	Res	Link	Bond lengths			Bond angles		
					Counts	RMSZ	# Z > 2	Counts	RMSZ	# Z > 2
3	7FF	A	1103	-	16,16,16	2.67	7 (43%)	22,22,22	2.43	6 (27%)
3	7FF	C	1103	-	16,16,16	2.48	7 (43%)	22,22,22	2.57	4 (18%)
3	7FF	B	1103	-	16,16,16	2.51	7 (43%)	22,22,22	2.43	3 (13%)
4	DMS	A	1104	-	3,3,3	0.75	0	3,3,3	1.13	0
3	7FF	D	1103	-	16,16,16	2.63	6 (37%)	22,22,22	2.01	6 (27%)

In the following table, the Chirals column lists the number of chiral outliers, the number of chiral centers analysed, the number of these observed in the model and the number defined in the Chemical Component Dictionary. Similar counts are reported in the Torsion and Rings columns. '-' means no outliers of that kind were identified.

Mol	Type	Chain	Res	Link	Chirals	Torsions	Rings
3	7FF	C	1103	-	-	2/6/16/16	0/2/2/2
3	7FF	B	1103	-	-	0/6/16/16	0/2/2/2
3	7FF	D	1103	-	-	4/6/16/16	0/2/2/2
3	7FF	A	1103	-	-	4/6/16/16	0/2/2/2

All (27) bond length outliers are listed below:

Mol	Chain	Res	Type	Atoms	Z	Observed(Å)	Ideal(Å)
3	A	1103	7FF	C3-N1	6.48	1.46	1.37
3	D	1103	7FF	C3-N1	6.21	1.46	1.37
3	B	1103	7FF	C3-N1	5.92	1.45	1.37
3	C	1103	7FF	C3-N1	5.53	1.45	1.37
3	A	1103	7FF	C2-N1	5.12	1.50	1.41
3	D	1103	7FF	C2-N1	4.88	1.49	1.41
3	C	1103	7FF	C2-N1	4.37	1.48	1.41
3	B	1103	7FF	C2-N1	3.81	1.47	1.41
3	B	1103	7FF	C13-C4	3.72	1.57	1.51
3	D	1103	7FF	O9-C3	3.69	1.40	1.34
3	B	1103	7FF	O9-C3	3.65	1.40	1.34
3	C	1103	7FF	O9-C3	3.55	1.40	1.34
3	C	1103	7FF	C13-C4	3.44	1.57	1.51
3	D	1103	7FF	C13-C4	3.28	1.56	1.51
3	A	1103	7FF	O9-C3	3.27	1.39	1.34
3	A	1103	7FF	C13-C4	3.21	1.56	1.51
3	D	1103	7FF	O9-C15	-2.28	1.40	1.45
3	C	1103	7FF	O9-C15	-2.27	1.40	1.45
3	D	1103	7FF	C8-N12	2.27	1.46	1.38
3	B	1103	7FF	C10-N1	-2.26	1.43	1.47
3	A	1103	7FF	O9-C15	-2.25	1.40	1.45

Continued on next page...

Continued from previous page...

Mol	Chain	Res	Type	Atoms	Z	Observed(Å)	Ideal(Å)
3	A	1103	7FF	C8-N12	2.21	1.46	1.38
3	C	1103	7FF	C8-N12	2.21	1.46	1.38
3	B	1103	7FF	C8-N12	2.20	1.46	1.38
3	C	1103	7FF	C10-N1	-2.07	1.44	1.47
3	A	1103	7FF	C10-N1	-2.07	1.44	1.47
3	B	1103	7FF	O9-C15	-2.03	1.40	1.45

All (19) bond angle outliers are listed below:

Mol	Chain	Res	Type	Atoms	Z	Observed(°)	Ideal(°)
3	B	1103	7FF	O9-C3-N1	9.53	120.61	111.42
3	C	1103	7FF	O9-C3-N1	9.31	120.39	111.42
3	A	1103	7FF	O9-C3-N1	8.39	119.51	111.42
3	D	1103	7FF	O9-C3-N1	6.42	117.61	111.42
3	C	1103	7FF	O6-C3-N1	-4.94	118.25	124.28
3	B	1103	7FF	O6-C3-N1	-4.54	118.74	124.28
3	A	1103	7FF	C15-O9-C3	-3.91	110.91	115.29
3	D	1103	7FF	C14-C10-N1	3.57	116.53	109.95
3	C	1103	7FF	C14-C10-N1	3.34	116.11	109.95
3	A	1103	7FF	O9-C3-O6	-3.27	118.67	124.60
3	A	1103	7FF	C14-C10-N1	3.20	115.83	109.95
3	D	1103	7FF	C2-N1-C3	-2.75	116.57	122.86
3	C	1103	7FF	C2-N1-C3	-2.52	117.08	122.86
3	A	1103	7FF	C7-C4-C2	2.25	121.06	118.95
3	D	1103	7FF	O9-C3-O6	-2.19	120.63	124.60
3	B	1103	7FF	O9-C3-O6	-2.18	120.65	124.60
3	D	1103	7FF	C7-C4-C2	2.11	120.92	118.95
3	D	1103	7FF	O6-C3-N1	-2.06	121.76	124.28
3	A	1103	7FF	O6-C3-N1	-2.03	121.80	124.28

There are no chirality outliers.

All (10) torsion outliers are listed below:

Mol	Chain	Res	Type	Atoms
3	A	1103	7FF	O6-C3-N1-C10
3	A	1103	7FF	O9-C3-N1-C10
3	A	1103	7FF	N1-C3-O9-C15
3	A	1103	7FF	O6-C3-O9-C15
3	D	1103	7FF	O6-C3-N1-C10
3	D	1103	7FF	O9-C3-N1-C10
3	D	1103	7FF	N1-C3-O9-C15
3	D	1103	7FF	O6-C3-O9-C15

Continued on next page...

Continued from previous page...

Mol	Chain	Res	Type	Atoms
3	C	1103	7FF	O6-C3-N1-C10
3	C	1103	7FF	O9-C3-N1-C10

There are no ring outliers.

2 monomers are involved in 7 short contacts:

Mol	Chain	Res	Type	Clashes	Symm-Clashes
4	A	1104	DMS	6	0
3	D	1103	7FF	1	0

5.7 Other polymers [i](#)

There are no such residues in this entry.

5.8 Polymer linkage issues [i](#)

There are no chain breaks in this entry.

6 Fit of model and data [i](#)

6.1 Protein, DNA and RNA chains [i](#)

In the following table, the column labelled ‘#RSRZ > 2’ contains the number (and percentage) of RSRZ outliers, followed by percent RSRZ outliers for the chain as percentile scores relative to all X-ray entries and entries of similar resolution. The OWAB column contains the minimum, median, 95th percentile and maximum values of the occupancy-weighted average B-factor per residue. The column labelled ‘Q < 0.9’ lists the number of (and percentage) of residues with an average occupancy less than 0.9.

Mol	Chain	Analysed	<RSRZ>	#RSRZ>2	OWAB(Å ²)	Q<0.9
1	A	172/183 (93%)	-1.13	0 100 100	21, 35, 64, 92	0
1	B	178/183 (97%)	-1.26	0 100 100	16, 29, 61, 92	0
1	C	178/183 (97%)	-1.22	0 100 100	17, 29, 59, 98	0
1	D	172/183 (93%)	-1.16	0 100 100	22, 35, 68, 93	0
All	All	700/732 (95%)	-1.19	0 100 100	16, 32, 65, 98	0

There are no RSRZ outliers to report.

6.2 Non-standard residues in protein, DNA, RNA chains [i](#)

There are no non-standard protein/DNA/RNA residues in this entry.

6.3 Carbohydrates [i](#)

There are no oligosaccharides in this entry.

6.4 Ligands [i](#)

In the following table, the Atoms column lists the number of modelled atoms in the group and the number defined in the chemical component dictionary. The B-factors column lists the minimum, median, 95th percentile and maximum values of B factors of atoms in the group. The column labelled ‘Q < 0.9’ lists the number of atoms with occupancy less than 0.9.

Mol	Type	Chain	Res	Atoms	RSCC	RSR	B-factors(Å ²)	Q<0.9
3	7FF	D	1103	15/15	0.97	0.07	41,75,82,83	0
4	DMS	A	1104	4/4	0.97	0.07	63,76,76,76	0
3	7FF	A	1103	15/15	0.98	0.06	43,69,79,80	0
4	DMS	B	1104	4/4	0.98	0.06	60,72,77,79	0

Continued on next page...

Continued from previous page...

Mol	Type	Chain	Res	Atoms	RSCC	RSR	B-factors(\AA^2)	Q<0.9
3	7FF	C	1103	15/15	0.99	0.04	32,44,62,68	0
3	7FF	B	1103	15/15	0.99	0.04	27,33,65,68	0
2	ZN	D	1101	1/1	1.00	0.02	34,34,34,34	0
2	ZN	D	1102	1/1	1.00	0.03	39,39,39,39	0
2	ZN	A	1101	1/1	1.00	0.02	35,35,35,35	0
2	ZN	A	1102	1/1	1.00	0.02	38,38,38,38	0
2	ZN	B	1101	1/1	1.00	0.01	28,28,28,28	0
2	ZN	B	1102	1/1	1.00	0.02	30,30,30,30	0
2	ZN	C	1101	1/1	1.00	0.01	30,30,30,30	0
2	ZN	C	1102	1/1	1.00	0.01	28,28,28,28	0

6.5 Other polymers [i](#)

There are no such residues in this entry.