



## Full wwPDB EM Validation Report ⓘ

Mar 20, 2026 – 01:01 AM UTC

PDB ID : 5H3O / pdb\_00005h3o  
EMDB ID : EMD-6656  
Title : Structure of a eukaryotic cyclic nucleotide-gated channel  
Authors : Li, M.; Zhou, X.; Wang, S.; Michailidis, I.; Gong, Y.; Su, D.; Li, H.; Li, X.;  
Yang, J.  
Deposited on : 2016-10-26  
Resolution : 3.50 Å(reported)

This is a Full wwPDB EM Validation Report for a publicly released PDB entry.

We welcome your comments at [validation@mail.wwpdb.org](mailto:validation@mail.wwpdb.org)

A user guide is available at

<https://www.wwpdb.org/validation/2017/EMValidationReportHelp>

with specific help available everywhere you see the ⓘ symbol.

The types of validation reports are described at

<http://www.wwpdb.org/validation/2017/FAQs#types>.

---

The following versions of software and data (see [references ⓘ](#)) were used in the production of this report:

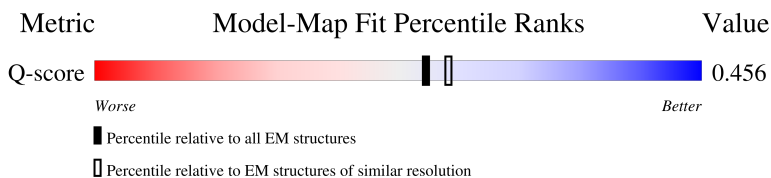
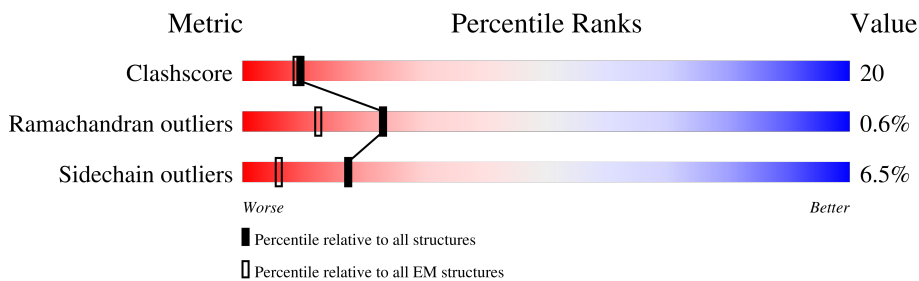
EMDB validation analysis : 0.0.1.dev132  
Mogul : 2022.3.0, CSD as543be (2022)  
MolProbity : 4-5-2 with Phenix2.0  
Buster-report : wwPDB partial adaption of 1.1.7 (2018)  
Percentile statistics : 20250101.v01 (using entries in the PDB archive January 1st 2025)  
EM percentile statistics : 202505.v01 (Using data in the EMDB archive up until May 2025)  
MapQ : 1.9.13  
Ideal geometry (proteins) : Engh & Huber (2001)  
Ideal geometry (DNA, RNA) : Parkinson et al. (1996)  
Validation Pipeline (wwPDB-VP) : 2.49

# 1 Overall quality at a glance

The following experimental techniques were used to determine the structure:  
*ELECTRON MICROSCOPY*

The reported resolution of this entry is 3.50 Å.

Percentile scores (ranging between 0-100) for global validation metrics of the entry are shown in the following graphic. The table shows the number of entries on which the scores are based.



Metric	Whole archive (#Entries)	EM structures (#Entries)	Similar EM resolution (#Entries, resolution range(Å))
Clashscore	229148	23984	-
Ramachandran outliers	224038	23583	-
Sidechain outliers	223484	23102	-
Q-score	-	25397	13950 ( 3.00 - 4.00 )

The table below summarises the geometric issues observed across the polymeric chains and their fit to the map. The red, orange, yellow and green segments of the bar indicate the fraction of residues that contain outliers for  $\geq 3$ , 2, 1 and 0 types of geometric quality criteria respectively. A grey segment represents the fraction of residues that are not modelled. The numeric value for each fraction is indicated below the corresponding segment, with a dot representing fractions  $\leq 5\%$ . The upper red bar (where present) indicates the fraction of residues that have poor fit to the EM map (all-atom inclusion  $< 40\%$ ). The numeric value is given above the bar.

Mol	Chain	Length	Quality of chain
1	A	738	
1	B	738	
1	C	738	
1	D	738	

## 2 Entry composition

There are 3 unique types of molecules in this entry. The entry contains 16958 atoms, of which 0 are hydrogens and 0 are deuteriums.

In the tables below, the AltConf column contains the number of residues with at least one atom in alternate conformation and the Trace column contains the number of residues modelled with at most 2 atoms.

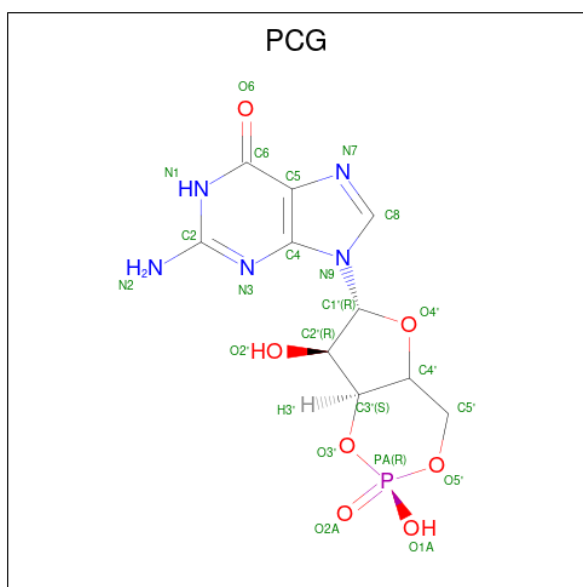
- Molecule 1 is a protein called Cyclic nucleotide-gated cation channel.

Mol	Chain	Residues	Atoms					AltConf	Trace
			Total	C	N	O	S		
1	A	510	4215	2742	708	741	24	0	0
1	B	510	4216	2742	708	742	24	0	0
1	C	510	4216	2742	708	742	24	0	0
1	D	510	4216	2742	708	742	24	0	0

There are 20 discrepancies between the modelled and reference sequences:

Chain	Residue	Modelled	Actual	Comment	Reference
A	-4	GLY	-	expression tag	UNP Q03611
A	-3	GLY	-	expression tag	UNP Q03611
A	-2	GLY	-	expression tag	UNP Q03611
A	-1	GLY	-	expression tag	UNP Q03611
A	0	SER	-	expression tag	UNP Q03611
B	-4	GLY	-	expression tag	UNP Q03611
B	-3	GLY	-	expression tag	UNP Q03611
B	-2	GLY	-	expression tag	UNP Q03611
B	-1	GLY	-	expression tag	UNP Q03611
B	0	SER	-	expression tag	UNP Q03611
C	-4	GLY	-	expression tag	UNP Q03611
C	-3	GLY	-	expression tag	UNP Q03611
C	-2	GLY	-	expression tag	UNP Q03611
C	-1	GLY	-	expression tag	UNP Q03611
C	0	SER	-	expression tag	UNP Q03611
D	-4	GLY	-	expression tag	UNP Q03611
D	-3	GLY	-	expression tag	UNP Q03611
D	-2	GLY	-	expression tag	UNP Q03611
D	-1	GLY	-	expression tag	UNP Q03611
D	0	SER	-	expression tag	UNP Q03611

- Molecule 2 is CYCLIC GUANOSINE MONOPHOSPHATE (CCD ID: PCG) (formula: C<sub>10</sub>H<sub>12</sub>N<sub>5</sub>O<sub>7</sub>P).



Mol	Chain	Residues	Atoms					AltConf
			Total	C	N	O	P	
2	A	1	23	10	5	7	1	0
2	B	1	23	10	5	7	1	0
2	C	1	23	10	5	7	1	0
2	D	1	23	10	5	7	1	0

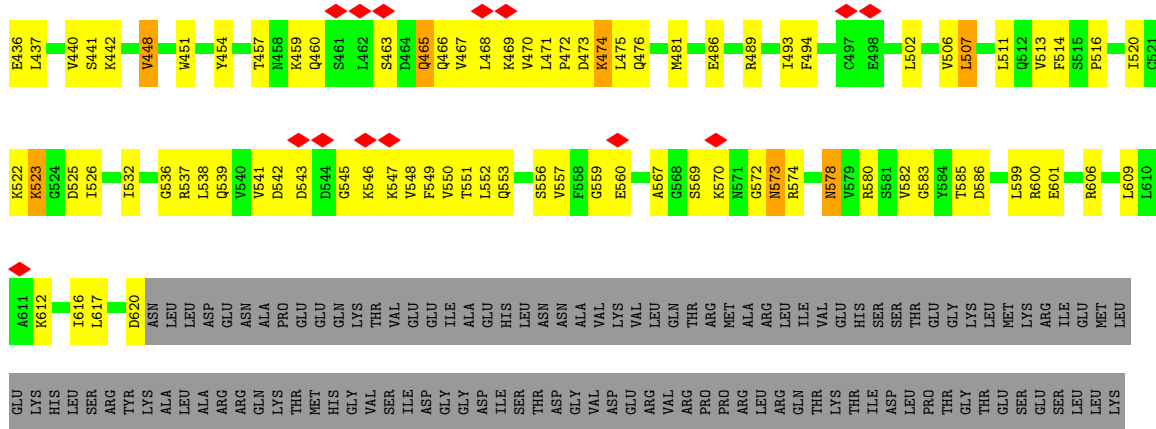
- Molecule 3 is SODIUM ION (CCD ID: NA) (formula: Na).

Mol	Chain	Residues	Atoms		AltConf
			Total	Na	
3	A	2	2	2	0
3	B	1	1	1	0









## 4 Experimental information

Property	Value	Source
EM reconstruction method	SINGLE PARTICLE	Depositor
Imposed symmetry	POINT, C4	Depositor
Number of particles used	99934	Depositor
Resolution determination method	FSC 0.143 CUT-OFF	Depositor
CTF correction method	NONE	Depositor
Microscope	FEI TITAN KRIOS	Depositor
Voltage (kV)	300	Depositor
Electron dose ( $e^-/\text{\AA}^2$ )	50	Depositor
Minimum defocus (nm)	1700	Depositor
Maximum defocus (nm)	2700	Depositor
Magnification	22500	Depositor
Image detector	GATAN K2 SUMMIT (4k x 4k)	Depositor
Maximum map value	0.340	Depositor
Minimum map value	-0.195	Depositor
Average map value	0.001	Depositor
Map value standard deviation	0.010	Depositor
Recommended contour level	0.0426	Depositor
Map size ( $\text{\AA}$ )	211.20001, 211.20001, 211.20001	wwPDB
Map dimensions	160, 160, 160	wwPDB
Map angles ( $^\circ$ )	90.0, 90.0, 90.0	wwPDB
Pixel spacing ( $\text{\AA}$ )	1.32, 1.32, 1.32	Depositor

## 5 Model quality i

### 5.1 Standard geometry i

Bond lengths and bond angles in the following residue types are not validated in this section: PCG, NA

The Z score for a bond length (or angle) is the number of standard deviations the observed value is removed from the expected value. A bond length (or angle) with  $|Z| > 5$  is considered an outlier worth inspection. RMSZ is the root-mean-square of all Z scores of the bond lengths (or angles).

Mol	Chain	Bond lengths		Bond angles	
		RMSZ	# $ Z  > 5$	RMSZ	# $ Z  > 5$
1	A	0.64	2/4317 (0.0%)	0.97	13/5854 (0.2%)
1	B	0.64	2/4318 (0.0%)	0.98	14/5856 (0.2%)
1	C	0.64	2/4318 (0.0%)	0.97	12/5856 (0.2%)
1	D	0.64	1/4318 (0.0%)	0.98	15/5856 (0.3%)
All	All	0.64	7/17271 (0.0%)	0.97	54/23422 (0.2%)

All (7) bond length outliers are listed below:

Mol	Chain	Res	Type	Atoms	Z	Observed(Å)	Ideal(Å)
1	A	268	ILE	CA-CB	7.03	1.63	1.54
1	C	268	ILE	CA-CB	6.86	1.63	1.54
1	D	268	ILE	CA-CB	6.86	1.63	1.54
1	B	268	ILE	CA-CB	6.61	1.62	1.54
1	B	277	PRO	C-N	-5.74	1.27	1.34
1	C	276	LEU	C-N	-5.02	1.27	1.33
1	A	277	PRO	C-N	-5.01	1.28	1.34

All (54) bond angle outliers are listed below:

Mol	Chain	Res	Type	Atoms	Z	Observed(°)	Ideal(°)
1	A	155	SER	N-CA-C	9.59	121.73	111.28
1	C	155	SER	N-CA-C	9.55	121.69	111.28
1	B	155	SER	N-CA-C	9.51	121.65	111.28
1	D	155	SER	N-CA-C	9.48	121.61	111.28
1	B	377	ILE	N-CA-C	-9.47	102.65	111.45
1	D	377	ILE	N-CA-C	-9.45	102.67	111.45
1	C	377	ILE	N-CA-C	-9.44	102.68	111.45
1	A	377	ILE	N-CA-C	-9.43	102.69	111.45
1	C	346	LEU	N-CA-C	7.70	120.56	111.71
1	B	276	LEU	CA-C-N	-6.79	111.35	119.84

*Continued on next page...*

*Continued from previous page...*

Mol	Chain	Res	Type	Atoms	Z	Observed(°)	Ideal(°)
1	B	276	LEU	C-N-CA	-6.79	111.35	119.84
1	A	382	SER	CA-C-N	6.72	126.75	119.90
1	A	382	SER	C-N-CA	6.72	126.75	119.90
1	D	346	LEU	N-CA-C	6.61	118.48	111.28
1	D	382	SER	CA-C-N	6.56	126.60	119.90
1	D	382	SER	C-N-CA	6.56	126.60	119.90
1	D	189	TYR	O-C-N	6.48	128.47	121.60
1	B	346	LEU	N-CA-C	6.41	118.34	111.36
1	C	382	SER	CA-C-N	6.40	126.43	119.90
1	C	382	SER	C-N-CA	6.40	126.43	119.90
1	B	189	TYR	O-C-N	6.32	128.30	121.60
1	A	346	LEU	N-CA-C	6.28	118.12	111.28
1	B	382	SER	CA-C-N	6.14	126.16	119.90
1	B	382	SER	C-N-CA	6.14	126.16	119.90
1	A	189	TYR	O-C-N	6.08	128.05	121.60
1	C	346	LEU	CA-C-N	-6.04	114.74	122.77
1	C	346	LEU	C-N-CA	-6.04	114.74	122.77
1	B	346	LEU	CA-C-N	-6.03	114.76	122.77
1	B	346	LEU	C-N-CA	-6.03	114.76	122.77
1	C	189	TYR	O-C-N	5.89	127.85	121.60
1	D	346	LEU	CA-C-N	-5.87	114.96	122.77
1	D	346	LEU	C-N-CA	-5.87	114.96	122.77
1	C	419	ALA	N-CA-C	-5.86	106.18	113.38
1	B	573	ASN	O-C-N	5.80	130.30	122.59
1	D	419	ALA	N-CA-C	-5.78	106.27	113.38
1	B	419	ALA	N-CA-C	-5.77	106.29	113.38
1	A	260	LEU	N-CA-C	-5.75	106.22	113.23
1	D	260	LEU	N-CA-C	-5.71	106.26	113.23
1	B	260	LEU	N-CA-C	-5.67	106.31	113.23
1	C	353	ASP	N-CA-C	5.63	118.15	111.33
1	A	419	ALA	N-CA-C	-5.63	106.46	113.38
1	A	346	LEU	CA-C-N	-5.56	115.37	122.77
1	A	346	LEU	C-N-CA	-5.56	115.37	122.77
1	C	573	ASN	O-C-N	5.54	129.96	122.59
1	C	260	LEU	N-CA-C	-5.53	106.49	113.23
1	D	276	LEU	CA-C-N	-5.53	112.93	119.84
1	D	276	LEU	C-N-CA	-5.53	112.93	119.84
1	B	353	ASP	N-CA-C	5.48	117.97	111.33
1	A	346	LEU	CB-CA-C	5.43	119.80	110.79
1	D	573	ASN	O-C-N	5.39	129.76	122.59
1	D	353	ASP	N-CA-C	5.36	117.82	111.33
1	A	353	ASP	N-CA-C	5.32	117.77	111.33

*Continued on next page...*

Continued from previous page...

Mol	Chain	Res	Type	Atoms	Z	Observed(°)	Ideal(°)
1	A	573	ASN	O-C-N	5.16	129.45	122.59
1	D	346	LEU	CB-CA-C	5.08	119.23	110.79

There are no chirality outliers.

There are no planarity outliers.

## 5.2 Too-close contacts [i](#)

In the following table, the Non-H and H(model) columns list the number of non-hydrogen atoms and hydrogen atoms in the chain respectively. The H(added) column lists the number of hydrogen atoms added and optimized by MolProbity. The Clashes column lists the number of clashes within the asymmetric unit, whereas Symm-Clashes lists symmetry-related clashes.

Mol	Chain	Non-H	H(model)	H(added)	Clashes	Symm-Clashes
1	A	4215	0	4253	175	0
1	B	4216	0	4254	182	0
1	C	4216	0	4254	186	0
1	D	4216	0	4254	178	0
2	A	23	0	11	2	0
2	B	23	0	11	2	0
2	C	23	0	11	2	0
2	D	23	0	11	2	0
3	A	2	0	0	0	0
3	B	1	0	0	0	0
All	All	16958	0	17059	679	0

The all-atom clashscore is defined as the number of clashes found per 1000 atoms (including hydrogen atoms). The all-atom clashscore for this structure is 20.

All (679) close contacts within the same asymmetric unit are listed below, sorted by their clash magnitude.

Atom-1	Atom-2	Interatomic distance (Å)	Clash overlap (Å)
1:D:547:LYS:HG2	1:D:548:VAL:H	1.46	0.80
1:B:547:LYS:HG2	1:B:548:VAL:H	1.47	0.80
1:B:210:LEU:HB3	1:B:211:MET:HE2	1.65	0.78
1:C:547:LYS:HG2	1:C:548:VAL:H	1.47	0.78
1:C:210:LEU:HB3	1:C:211:MET:HE2	1.66	0.78
1:A:547:LYS:HG2	1:A:548:VAL:H	1.47	0.78
1:C:541:VAL:HG22	1:C:549:PHE:HD1	1.50	0.77
1:D:210:LEU:HB3	1:D:211:MET:HE2	1.67	0.76

Continued on next page...

*Continued from previous page...*

Atom-1	Atom-2	Interatomic distance (Å)	Clash overlap (Å)
1:A:472:PRO:HG3	1:D:451:TRP:CZ2	2.20	0.76
1:B:541:VAL:HG22	1:B:549:PHE:HD1	1.51	0.76
1:B:451:TRP:CZ2	1:C:472:PRO:HG3	2.21	0.76
1:A:210:LEU:HB3	1:A:211:MET:HE2	1.66	0.75
1:A:451:TRP:CZ2	1:B:472:PRO:HG3	2.22	0.75
1:C:523:LYS:HE2	1:C:542:ASP:OD2	1.86	0.75
1:D:541:VAL:HG22	1:D:549:PHE:HD1	1.50	0.75
1:C:451:TRP:CZ2	1:D:472:PRO:HG3	2.22	0.74
1:B:523:LYS:HE2	1:B:542:ASP:OD2	1.87	0.74
1:B:257:LEU:HD21	1:B:286:ARG:HE	1.53	0.74
1:A:257:LEU:HD21	1:A:286:ARG:HE	1.52	0.73
1:D:194:TRP:H	1:D:194:TRP:CD1	2.06	0.73
1:B:194:TRP:H	1:B:194:TRP:CD1	2.06	0.73
1:B:260:LEU:HD13	1:B:262:TYR:HE2	1.54	0.73
1:B:349:GLN:HG2	1:B:365:TYR:HE1	1.54	0.73
1:C:194:TRP:H	1:C:194:TRP:CD1	2.06	0.73
1:D:257:LEU:HD21	1:D:286:ARG:HE	1.54	0.73
1:C:260:LEU:HD13	1:C:262:TYR:HE2	1.54	0.73
1:A:541:VAL:HG22	1:A:549:PHE:HD1	1.52	0.72
1:C:228:MET:HE2	1:C:233:VAL:HG22	1.71	0.72
1:C:257:LEU:HD21	1:C:286:ARG:HE	1.54	0.72
1:C:349:GLN:HG2	1:C:365:TYR:HE1	1.54	0.72
1:A:194:TRP:CD1	1:A:194:TRP:H	2.07	0.72
1:D:523:LYS:HE2	1:D:542:ASP:OD2	1.90	0.71
1:D:260:LEU:HD13	1:D:262:TYR:HE2	1.55	0.71
1:A:260:LEU:HD13	1:A:262:TYR:HE2	1.55	0.71
1:B:228:MET:HE2	1:B:233:VAL:HG22	1.72	0.71
1:D:228:MET:HE2	1:D:233:VAL:HG22	1.73	0.71
1:D:349:GLN:HG2	1:D:365:TYR:HE1	1.55	0.71
1:A:228:MET:HE2	1:A:233:VAL:HG22	1.73	0.71
1:A:523:LYS:HE2	1:A:542:ASP:OD2	1.91	0.70
1:A:537:ARG:NH2	1:B:230:GLN:OE1	2.24	0.70
1:A:572:GLY:O	1:A:574:ARG:N	2.23	0.70
1:D:572:GLY:O	1:D:574:ARG:N	2.24	0.70
1:A:349:GLN:HG2	1:A:365:TYR:HE1	1.57	0.69
1:A:183:MET:HG3	1:A:184:PRO:HD2	1.74	0.69
1:D:183:MET:HG3	1:D:184:PRO:HD2	1.75	0.69
1:C:183:MET:HG3	1:C:184:PRO:HD2	1.76	0.68
1:B:537:ARG:NH2	1:C:230:GLN:OE1	2.27	0.68
1:B:572:GLY:O	1:B:574:ARG:N	2.24	0.67
1:A:465:GLN:HA	1:A:468:LEU:HD12	1.75	0.67

*Continued on next page...*

*Continued from previous page...*

Atom-1	Atom-2	Interatomic distance (Å)	Clash overlap (Å)
1:B:183:MET:HG3	1:B:184:PRO:HD2	1.76	0.67
1:B:465:GLN:HA	1:B:468:LEU:HD12	1.75	0.67
1:C:465:GLN:HA	1:C:468:LEU:HD12	1.76	0.67
1:C:215:TYR:CD1	1:C:286:ARG:HD2	2.29	0.67
1:A:215:TYR:CD1	1:A:286:ARG:HD2	2.29	0.67
1:A:149:ILE:HG12	1:A:204:TRP:CD1	2.29	0.66
1:C:572:GLY:O	1:C:574:ARG:N	2.24	0.66
1:C:473:ASP:OD1	1:C:507:LEU:HD21	1.95	0.66
1:D:465:GLN:HA	1:D:468:LEU:HD12	1.75	0.66
1:C:328:PHE:HZ	1:C:362:ARG:HE	1.43	0.66
1:A:328:PHE:HZ	1:A:362:ARG:HE	1.43	0.66
1:B:473:ASP:OD1	1:B:507:LEU:HD21	1.96	0.66
1:C:523:LYS:CE	1:C:542:ASP:OD2	2.44	0.66
1:C:537:ARG:NH2	1:D:230:GLN:OE1	2.27	0.66
1:D:149:ILE:HG12	1:D:204:TRP:CD1	2.31	0.66
1:D:194:TRP:CZ2	1:D:268:ILE:HB	2.31	0.65
1:D:215:TYR:CD1	1:D:286:ARG:HD2	2.31	0.65
1:B:257:LEU:HD22	1:B:258:ILE:HG23	1.79	0.65
1:D:328:PHE:HZ	1:D:362:ARG:HE	1.45	0.65
1:A:599:LEU:HD22	1:A:606:ARG:HG3	1.79	0.65
1:C:194:TRP:CZ2	1:C:268:ILE:HB	2.32	0.65
1:B:215:TYR:CD1	1:B:286:ARG:HD2	2.31	0.64
1:C:149:ILE:HG12	1:C:204:TRP:CD1	2.32	0.64
1:C:257:LEU:HD22	1:C:258:ILE:HG23	1.80	0.64
1:A:257:LEU:HD22	1:A:258:ILE:HG23	1.80	0.64
1:C:599:LEU:HD22	1:C:606:ARG:HG3	1.80	0.64
1:D:170:VAL:HG12	1:D:171:GLU:H	1.63	0.64
1:B:194:TRP:CZ2	1:B:268:ILE:HB	2.32	0.63
1:B:149:ILE:HG12	1:B:204:TRP:CD1	2.33	0.63
1:B:170:VAL:HG12	1:B:171:GLU:H	1.64	0.63
1:D:257:LEU:HD22	1:D:258:ILE:HG23	1.80	0.63
1:A:257:LEU:HG	1:A:286:ARG:HG3	1.79	0.63
1:B:523:LYS:CE	1:B:542:ASP:OD2	2.46	0.63
1:B:599:LEU:HD22	1:B:606:ARG:HG3	1.79	0.63
1:A:194:TRP:CZ2	1:A:268:ILE:HB	2.32	0.63
1:B:448:VAL:HG22	1:C:475:LEU:HD13	1.81	0.63
1:C:257:LEU:HG	1:C:286:ARG:HG3	1.81	0.63
1:B:257:LEU:HG	1:B:286:ARG:HG3	1.80	0.63
1:D:523:LYS:CE	1:D:542:ASP:OD2	2.47	0.63
1:A:230:GLN:OE1	1:D:537:ARG:NH2	2.31	0.63
1:D:599:LEU:HD22	1:D:606:ARG:HG3	1.80	0.63

*Continued on next page...*

*Continued from previous page...*

Atom-1	Atom-2	Interatomic distance (Å)	Clash overlap (Å)
1:B:355:ILE:HD12	1:B:361:ARG:NH1	2.14	0.63
1:C:448:VAL:HG22	1:D:475:LEU:HD13	1.81	0.63
1:C:468:LEU:O	1:C:476:GLN:NE2	2.32	0.63
1:B:468:LEU:O	1:B:476:GLN:NE2	2.33	0.62
1:A:170:VAL:HG12	1:A:171:GLU:H	1.63	0.62
1:D:257:LEU:HG	1:D:286:ARG:HG3	1.81	0.62
1:C:170:VAL:HG12	1:C:171:GLU:H	1.64	0.62
1:A:426:ASN:OD1	1:B:416:ASN:ND2	2.33	0.62
1:B:328:PHE:HZ	1:B:362:ARG:HE	1.45	0.62
1:A:355:ILE:HD12	1:A:361:ARG:NH1	2.14	0.62
1:A:448:VAL:HG22	1:B:475:LEU:HD13	1.81	0.62
1:B:546:LYS:H	1:B:549:PHE:HZ	1.48	0.62
1:D:468:LEU:O	1:D:476:GLN:NE2	2.33	0.62
1:A:473:ASP:OD1	1:A:507:LEU:HD21	2.00	0.61
1:A:435:MET:HE1	1:A:448:VAL:HG11	1.83	0.61
1:C:355:ILE:HD12	1:C:361:ARG:NH1	2.16	0.61
1:A:475:LEU:HD13	1:D:448:VAL:HG22	1.82	0.61
1:C:546:LYS:H	1:C:549:PHE:HZ	1.49	0.61
1:A:468:LEU:O	1:A:476:GLN:NE2	2.33	0.61
1:C:125:THR:HG22	1:C:289:ARG:HD2	1.83	0.60
1:B:426:ASN:OD1	1:C:416:ASN:ND2	2.34	0.60
1:A:125:THR:HG22	1:A:289:ARG:HD2	1.82	0.60
1:A:140:ILE:O	1:A:144:VAL:HG23	2.02	0.60
1:A:405:THR:HG22	1:D:411:GLY:HA2	1.84	0.60
1:B:435:MET:HE1	1:B:448:VAL:HG11	1.84	0.60
1:C:435:MET:HE1	1:C:448:VAL:HG11	1.84	0.60
1:C:426:ASN:OD1	1:D:416:ASN:ND2	2.34	0.60
1:D:140:ILE:O	1:D:144:VAL:HG23	2.02	0.60
1:D:473:ASP:OD1	1:D:507:LEU:HD21	2.00	0.60
1:C:160:TYR:HA	1:C:167:THR:HA	1.84	0.60
1:D:355:ILE:HD12	1:D:361:ARG:NH1	2.16	0.60
1:C:140:ILE:O	1:C:144:VAL:HG23	2.02	0.60
1:B:160:TYR:HA	1:B:167:THR:HA	1.83	0.59
1:D:215:TYR:CE1	1:D:286:ARG:HD2	2.37	0.59
1:A:416:ASN:ND2	1:D:426:ASN:OD1	2.34	0.59
1:A:215:TYR:CE1	1:A:286:ARG:HD2	2.37	0.59
1:D:194:TRP:HZ2	1:D:268:ILE:HB	1.67	0.59
1:A:160:TYR:HA	1:A:167:THR:HA	1.84	0.59
1:C:414:ILE:HA	1:C:417:MET:HE2	1.84	0.59
1:B:140:ILE:O	1:B:144:VAL:HG23	2.02	0.59
1:D:155:SER:HB2	1:D:172:CYS:HB2	1.85	0.59

*Continued on next page...*

*Continued from previous page...*

Atom-1	Atom-2	Interatomic distance (Å)	Clash overlap (Å)
1:D:546:LYS:H	1:D:549:PHE:HZ	1.50	0.59
1:C:215:TYR:CE1	1:C:286:ARG:HD2	2.38	0.58
1:D:125:THR:HG22	1:D:289:ARG:HD2	1.84	0.58
1:A:542:ASP:O	1:A:543:ASP:HB2	2.02	0.58
1:D:160:TYR:HA	1:D:167:THR:HA	1.84	0.58
1:D:435:MET:HE1	1:D:448:VAL:HG11	1.85	0.58
1:C:542:ASP:O	1:C:543:ASP:HB2	2.04	0.58
1:D:545:GLY:HA2	1:D:549:PHE:HE1	1.68	0.58
1:A:545:GLY:HA2	1:A:549:PHE:HE1	1.69	0.58
1:B:215:TYR:CE1	1:B:286:ARG:HD2	2.38	0.58
1:D:369:TRP:NE1	1:D:380:VAL:HG11	2.19	0.58
1:B:542:ASP:O	1:B:543:ASP:HB2	2.03	0.58
1:D:260:LEU:HD13	1:D:262:TYR:CE2	2.39	0.58
1:C:545:GLY:HA2	1:C:549:PHE:CE1	2.38	0.58
1:A:260:LEU:HD13	1:A:262:TYR:CE2	2.38	0.58
1:B:537:ARG:HH11	1:C:232:LEU:HD12	1.69	0.57
1:D:486:GLU:HG2	1:D:489:ARG:HH21	1.68	0.57
1:D:545:GLY:HA2	1:D:549:PHE:CE1	2.39	0.57
1:C:155:SER:HB2	1:C:172:CYS:HB2	1.86	0.57
1:C:260:LEU:HD13	1:C:262:TYR:CE2	2.37	0.57
1:A:411:GLY:HA2	1:B:405:THR:HG22	1.85	0.57
1:C:537:ARG:HH11	1:D:232:LEU:HD12	1.69	0.57
1:A:545:GLY:HA2	1:A:549:PHE:CE1	2.39	0.57
1:A:369:TRP:NE1	1:A:380:VAL:HG11	2.19	0.57
1:B:474:LYS:HE2	1:B:474:LYS:HA	1.86	0.57
1:A:432:LYS:O	1:A:436:GLU:HG2	2.05	0.57
1:A:546:LYS:H	1:A:549:PHE:HZ	1.51	0.57
1:A:234:VAL:HG11	1:A:239:LYS:HD3	1.87	0.57
1:D:474:LYS:HE2	1:D:474:LYS:HA	1.87	0.57
1:A:155:SER:HB2	1:A:172:CYS:HB2	1.85	0.56
1:A:194:TRP:HZ2	1:A:268:ILE:HB	1.70	0.56
1:B:545:GLY:HA2	1:B:549:PHE:CE1	2.39	0.56
1:B:125:THR:HG22	1:B:289:ARG:HD2	1.86	0.56
1:B:194:TRP:HZ2	1:B:268:ILE:HB	1.69	0.56
1:B:234:VAL:HG11	1:B:239:LYS:HD3	1.87	0.56
1:B:432:LYS:O	1:B:436:GLU:HG2	2.05	0.56
1:C:369:TRP:NE1	1:C:380:VAL:HG11	2.20	0.56
1:C:432:LYS:O	1:C:436:GLU:HG2	2.05	0.56
1:C:545:GLY:HA2	1:C:549:PHE:HE1	1.69	0.56
1:A:369:TRP:CD1	1:A:380:VAL:HG11	2.40	0.56
1:B:454:TYR:HA	1:B:457:THR:HG22	1.88	0.56

*Continued on next page...*

*Continued from previous page...*

Atom-1	Atom-2	Interatomic distance (Å)	Clash overlap (Å)
1:C:411:GLY:HA2	1:D:405:THR:HG22	1.86	0.56
1:C:539:GLN:OE1	1:C:580:ARG:NH2	2.36	0.56
1:A:537:ARG:HH11	1:B:232:LEU:HD12	1.70	0.56
1:B:155:SER:HB2	1:B:172:CYS:HB2	1.86	0.56
1:B:369:TRP:NE1	1:B:380:VAL:HG11	2.21	0.56
1:D:542:ASP:O	1:D:543:ASP:HB2	2.05	0.56
1:C:194:TRP:HZ2	1:C:268:ILE:HB	1.69	0.56
1:C:369:TRP:CD1	1:C:380:VAL:HG11	2.41	0.56
1:C:536:GLY:HA3	1:C:585:THR:HG22	1.88	0.56
1:A:541:VAL:HG22	1:A:549:PHE:CD1	2.39	0.56
1:B:545:GLY:HA2	1:B:549:PHE:HE1	1.70	0.55
1:C:454:TYR:HA	1:C:457:THR:HG22	1.89	0.55
1:B:411:GLY:HA2	1:C:405:THR:HG22	1.89	0.55
1:D:432:LYS:O	1:D:436:GLU:HG2	2.05	0.55
1:A:525:ASP:OD1	1:A:526:ILE:N	2.40	0.55
1:C:578:ASN:OD1	1:C:578:ASN:N	2.40	0.55
1:A:414:ILE:HA	1:A:417:MET:HE2	1.88	0.55
1:A:516:PRO:HB3	1:A:583:GLY:HA2	1.88	0.55
1:A:536:GLY:HA3	1:A:585:THR:HG22	1.89	0.55
1:C:335:GLY:O	1:C:338:THR:HG22	2.07	0.55
1:D:522:LYS:HA	1:D:578:ASN:HB3	1.89	0.55
1:B:525:ASP:OD1	1:B:526:ILE:N	2.39	0.55
1:C:569:SER:HB3	1:C:620:ASP:OD2	2.07	0.55
1:D:234:VAL:HG11	1:D:239:LYS:HD3	1.89	0.55
1:D:536:GLY:HA3	1:D:585:THR:HG22	1.89	0.55
1:A:523:LYS:CE	1:A:542:ASP:OD2	2.54	0.54
1:B:578:ASN:OD1	1:B:578:ASN:N	2.40	0.54
1:D:149:ILE:HG23	1:D:201:ARG:HG2	1.89	0.54
1:A:474:LYS:HE2	1:A:474:LYS:HA	1.90	0.54
1:C:474:LYS:HA	1:C:474:LYS:HE2	1.89	0.54
1:D:454:TYR:HA	1:D:457:THR:HG22	1.89	0.54
1:A:578:ASN:N	1:A:578:ASN:OD1	2.40	0.54
1:C:486:GLU:HG2	1:C:489:ARG:HH21	1.72	0.54
1:C:522:LYS:HA	1:C:578:ASN:HB3	1.89	0.54
1:B:335:GLY:O	1:B:338:THR:HG22	2.08	0.54
1:B:369:TRP:CD1	1:B:380:VAL:HG11	2.42	0.54
1:C:525:ASP:OD1	1:C:526:ILE:N	2.40	0.54
1:A:335:GLY:O	1:A:338:THR:HG22	2.08	0.54
1:B:149:ILE:HG23	1:B:201:ARG:HG2	1.90	0.54
1:B:516:PRO:HB3	1:B:583:GLY:HA2	1.90	0.54
1:D:369:TRP:CD1	1:D:380:VAL:HG11	2.43	0.54

*Continued on next page...*

*Continued from previous page...*

Atom-1	Atom-2	Interatomic distance (Å)	Clash overlap (Å)
1:B:257:LEU:HB2	1:B:283:ARG:HA	1.89	0.54
1:B:569:SER:HB3	1:B:620:ASP:OD2	2.08	0.54
1:B:156:LEU:HD12	1:B:169:GLN:HB3	1.90	0.53
1:B:486:GLU:HG2	1:B:489:ARG:HH21	1.72	0.53
1:D:266:TRP:CD1	1:D:267:PRO:HG2	2.44	0.53
1:D:335:GLY:O	1:D:338:THR:HG22	2.08	0.53
1:D:578:ASN:OD1	1:D:578:ASN:N	2.41	0.53
1:A:232:LEU:HD12	1:D:537:ARG:HH11	1.71	0.53
1:D:525:ASP:OD1	1:D:526:ILE:N	2.41	0.53
1:A:149:ILE:HG23	1:A:201:ARG:HG2	1.91	0.53
1:A:232:LEU:HD21	1:D:582:VAL:HG12	1.91	0.53
1:A:266:TRP:CD1	1:A:267:PRO:HG2	2.44	0.53
1:A:486:GLU:HG2	1:A:489:ARG:HH21	1.73	0.53
1:C:142:ARG:HD3	1:C:149:ILE:CD1	2.39	0.53
1:A:454:TYR:HA	1:A:457:THR:HG22	1.90	0.53
1:B:522:LYS:HA	1:B:578:ASN:HB3	1.90	0.53
1:C:234:VAL:HG11	1:C:239:LYS:HD3	1.89	0.53
1:C:569:SER:CB	1:C:620:ASP:OD2	2.57	0.53
1:B:266:TRP:CD1	1:B:267:PRO:HG2	2.44	0.53
1:B:539:GLN:HB3	1:B:551:THR:HG22	1.91	0.53
1:A:142:ARG:HD3	1:A:149:ILE:CD1	2.39	0.53
1:A:522:LYS:HA	1:A:578:ASN:HB3	1.89	0.53
1:C:433:GLN:O	1:C:437:LEU:HD13	2.09	0.53
1:D:414:ILE:HA	1:D:417:MET:HE2	1.91	0.53
1:D:569:SER:HB3	1:D:620:ASP:OD2	2.09	0.53
1:B:541:VAL:HG22	1:B:549:PHE:CD1	2.39	0.53
1:C:131:ALA:O	1:C:134:TYR:HB3	2.09	0.53
1:C:149:ILE:HG23	1:C:201:ARG:HG2	1.91	0.53
1:D:257:LEU:HB2	1:D:283:ARG:HA	1.91	0.52
1:D:539:GLN:HB3	1:D:551:THR:HG22	1.90	0.52
1:B:131:ALA:O	1:B:134:TYR:HB3	2.09	0.52
1:A:253:ASP:OD1	1:A:254:GLY:N	2.43	0.52
1:B:260:LEU:HD13	1:B:262:TYR:CE2	2.38	0.52
1:D:108:TYR:CZ	1:D:109:LEU:HD13	2.45	0.52
1:D:253:ASP:OD1	1:D:254:GLY:N	2.43	0.52
1:A:473:ASP:CG	1:A:507:LEU:HD21	2.35	0.52
1:B:142:ARG:HD3	1:B:149:ILE:CD1	2.40	0.52
1:B:536:GLY:HA3	1:B:585:THR:HG22	1.92	0.52
1:C:516:PRO:HB3	1:C:583:GLY:HA2	1.90	0.52
1:C:473:ASP:CG	1:C:507:LEU:HD21	2.35	0.52
1:D:156:LEU:HD12	1:D:169:GLN:HB3	1.92	0.52

*Continued on next page...*

*Continued from previous page...*

Atom-1	Atom-2	Interatomic distance (Å)	Clash overlap (Å)
1:A:131:ALA:O	1:A:134:TYR:HB3	2.10	0.52
1:C:266:TRP:CD1	1:C:267:PRO:HG2	2.44	0.52
1:C:253:ASP:OD1	1:C:254:GLY:N	2.43	0.52
1:D:383:PRO:HB2	1:D:389:TYR:CE2	2.45	0.52
1:A:156:LEU:HA	1:A:170:VAL:O	2.09	0.52
1:A:433:GLN:O	1:A:437:LEU:HD13	2.09	0.52
1:B:433:GLN:O	1:B:437:LEU:HD13	2.10	0.52
1:B:569:SER:CB	1:B:620:ASP:OD2	2.59	0.52
1:C:553:GLN:O	1:C:556:SER:OG	2.26	0.52
1:B:582:VAL:HG12	1:C:232:LEU:HD21	1.93	0.51
1:C:156:LEU:HD12	1:C:169:GLN:HB3	1.92	0.51
1:D:433:GLN:O	1:D:437:LEU:HD13	2.10	0.51
1:A:435:MET:HG2	1:A:440:VAL:HG11	1.92	0.51
1:A:559:GLY:H	2:A:801:PCG:H4'	1.76	0.51
1:D:131:ALA:O	1:D:134:TYR:HB3	2.10	0.51
1:A:470:VAL:HG11	1:D:427:LYS:HB3	1.93	0.51
1:B:253:ASP:OD1	1:B:254:GLY:N	2.44	0.51
1:C:156:LEU:HA	1:C:170:VAL:O	2.10	0.51
1:C:383:PRO:HB2	1:C:389:TYR:CE2	2.46	0.51
1:C:547:LYS:HG2	1:C:548:VAL:N	2.23	0.51
1:C:567:ALA:HB1	1:C:570:LYS:HA	1.93	0.51
1:B:466:GLN:O	1:B:470:VAL:HG23	2.10	0.51
1:C:313:VAL:O	1:C:317:VAL:HG23	2.11	0.51
1:D:516:PRO:HB3	1:D:583:GLY:HA2	1.92	0.51
1:A:156:LEU:HD12	1:A:169:GLN:HB3	1.93	0.51
1:B:156:LEU:HA	1:B:170:VAL:O	2.11	0.51
1:A:427:LYS:HB3	1:B:470:VAL:HG11	1.93	0.51
1:B:144:VAL:HG21	1:B:325:CYS:HB3	1.93	0.51
1:B:414:ILE:HA	1:B:417:MET:HE2	1.91	0.51
1:C:435:MET:HG2	1:C:440:VAL:HG11	1.93	0.51
1:D:265:GLY:HA2	1:D:273:TRP:HE1	1.75	0.51
1:D:473:ASP:CG	1:D:507:LEU:HD21	2.36	0.51
1:A:257:LEU:HB2	1:A:283:ARG:HA	1.93	0.51
1:B:218:ASP:OD1	1:B:289:ARG:NH1	2.44	0.51
1:B:473:ASP:CG	1:B:507:LEU:HD21	2.36	0.51
1:C:541:VAL:HG22	1:C:549:PHE:CD1	2.38	0.51
1:D:466:GLN:O	1:D:470:VAL:HG23	2.10	0.51
1:A:567:ALA:HB1	1:A:570:LYS:HA	1.91	0.51
1:C:427:LYS:HB3	1:D:470:VAL:HG11	1.93	0.51
1:D:142:ARG:HD3	1:D:149:ILE:CD1	2.41	0.51
1:A:569:SER:HB3	1:A:620:ASP:OD2	2.12	0.50

*Continued on next page...*

*Continued from previous page...*

Atom-1	Atom-2	Interatomic distance (Å)	Clash overlap (Å)
1:C:539:GLN:HB3	1:C:551:THR:HG22	1.93	0.50
1:A:313:VAL:O	1:A:317:VAL:HG23	2.11	0.50
1:B:567:ALA:HB1	1:B:570:LYS:HA	1.93	0.50
1:B:313:VAL:O	1:B:317:VAL:HG23	2.10	0.50
1:B:383:PRO:HB2	1:B:389:TYR:CE2	2.46	0.50
1:C:265:GLY:HA2	1:C:273:TRP:HE1	1.77	0.50
1:D:116:PRO:HA	1:D:121:PHE:CD2	2.46	0.50
1:A:170:VAL:HG12	1:A:171:GLU:N	2.27	0.50
1:C:265:GLY:O	1:C:275:GLY:HA2	2.12	0.50
1:B:265:GLY:HA2	1:B:273:TRP:HE1	1.77	0.50
1:C:108:TYR:CZ	1:C:109:LEU:HD13	2.46	0.50
1:C:257:LEU:HB2	1:C:283:ARG:HA	1.92	0.50
1:D:156:LEU:HA	1:D:170:VAL:O	2.12	0.50
1:B:427:LYS:HB3	1:C:470:VAL:HG11	1.94	0.50
1:D:547:LYS:HG2	1:D:548:VAL:N	2.22	0.50
1:A:116:PRO:HA	1:A:121:PHE:CD2	2.47	0.50
1:A:582:VAL:HG12	1:B:232:LEU:HD21	1.94	0.50
1:D:567:ALA:HB1	1:D:570:LYS:HA	1.93	0.50
1:D:541:VAL:HG22	1:D:549:PHE:CD1	2.39	0.50
1:B:116:PRO:HA	1:B:121:PHE:CD2	2.47	0.49
1:D:273:TRP:HA	1:D:273:TRP:CE3	2.47	0.49
1:D:569:SER:CB	1:D:620:ASP:OD2	2.60	0.49
1:B:108:TYR:CZ	1:B:109:LEU:HD13	2.47	0.49
1:B:273:TRP:HA	1:B:273:TRP:CE3	2.47	0.49
1:B:547:LYS:CG	1:B:548:VAL:H	2.21	0.49
1:D:313:VAL:O	1:D:317:VAL:HG23	2.12	0.49
1:B:493:ILE:HD11	1:B:609:LEU:HD21	1.94	0.49
1:C:170:VAL:HG12	1:C:171:GLU:N	2.27	0.49
1:A:539:GLN:HB3	1:A:551:THR:HG22	1.93	0.49
1:A:553:GLN:O	1:A:556:SER:OG	2.26	0.49
1:D:349:GLN:HG2	1:D:365:TYR:CE1	2.42	0.49
1:D:435:MET:HG2	1:D:440:VAL:HG11	1.93	0.49
1:A:108:TYR:CZ	1:A:109:LEU:HD13	2.47	0.49
1:A:383:PRO:HB2	1:A:389:TYR:CE2	2.47	0.49
1:D:215:TYR:HD1	1:D:286:ARG:HD2	1.77	0.49
1:A:502:LEU:O	1:A:506:VAL:HG23	2.13	0.49
1:D:126:CYS:O	1:D:129:THR:HB	2.12	0.49
1:A:223:TYR:HA	1:A:244:TYR:CD1	2.48	0.49
1:B:194:TRP:CD1	1:B:194:TRP:N	2.79	0.49
1:A:569:SER:CB	1:A:620:ASP:OD2	2.61	0.49
1:B:435:MET:HG2	1:B:440:VAL:HG11	1.94	0.49

*Continued on next page...*

*Continued from previous page...*

Atom-1	Atom-2	Interatomic distance (Å)	Clash overlap (Å)
1:B:126:CYS:O	1:B:129:THR:HB	2.13	0.49
1:B:539:GLN:OE1	1:B:580:ARG:NH2	2.39	0.49
1:A:194:TRP:CD1	1:A:194:TRP:N	2.80	0.48
1:A:326:LEU:HA	1:A:326:LEU:HD23	1.59	0.48
1:B:170:VAL:HG12	1:B:171:GLU:N	2.27	0.48
1:B:222:ASN:HA	1:B:225:MET:HG2	1.95	0.48
1:B:502:LEU:O	1:B:506:VAL:HG23	2.13	0.48
1:C:116:PRO:HA	1:C:121:PHE:CD2	2.48	0.48
1:C:349:GLN:HG2	1:C:365:TYR:CE1	2.41	0.48
1:C:502:LEU:O	1:C:506:VAL:HG23	2.12	0.48
1:C:612:LYS:O	1:C:616:ILE:HG13	2.13	0.48
1:D:559:GLY:H	2:D:801:PCG:H4'	1.79	0.48
1:C:582:VAL:HG12	1:D:232:LEU:HD21	1.95	0.48
1:D:218:ASP:OD1	1:D:289:ARG:NH1	2.45	0.48
1:C:493:ILE:HD11	1:C:609:LEU:HD21	1.95	0.48
1:D:539:GLN:OE1	1:D:580:ARG:NH2	2.38	0.48
1:A:350:SER:O	1:A:361:ARG:NH1	2.46	0.48
1:A:514:PHE:CD1	1:A:520:ILE:HG13	2.49	0.48
1:B:265:GLY:O	1:B:275:GLY:HA2	2.14	0.48
1:B:572:GLY:C	1:B:574:ARG:H	2.18	0.48
1:C:559:GLY:H	2:C:801:PCG:H4'	1.79	0.48
1:D:142:ARG:HD3	1:D:149:ILE:HD11	1.95	0.48
1:A:547:LYS:CG	1:A:548:VAL:H	2.21	0.48
1:C:126:CYS:O	1:C:129:THR:HB	2.14	0.48
1:C:466:GLN:O	1:C:470:VAL:HG23	2.13	0.48
1:C:572:GLY:C	1:C:574:ARG:N	2.72	0.48
1:A:273:TRP:HA	1:A:273:TRP:CE3	2.48	0.48
1:A:612:LYS:O	1:A:616:ILE:HG13	2.14	0.48
1:B:349:GLN:HG2	1:B:365:TYR:CE1	2.41	0.48
1:B:514:PHE:CD1	1:B:520:ILE:HG13	2.48	0.48
1:C:361:ARG:NH2	1:D:389:TYR:CE2	2.82	0.48
1:D:170:VAL:HG12	1:D:171:GLU:N	2.26	0.48
1:B:612:LYS:O	1:B:616:ILE:HG13	2.14	0.48
1:C:572:GLY:C	1:C:574:ARG:H	2.17	0.48
1:A:126:CYS:O	1:A:129:THR:HB	2.14	0.48
1:B:361:ARG:NH2	1:C:389:TYR:CE2	2.82	0.48
1:D:144:VAL:HG21	1:D:325:CYS:HB3	1.96	0.48
1:B:572:GLY:C	1:B:574:ARG:N	2.72	0.47
1:D:194:TRP:CD1	1:D:194:TRP:N	2.79	0.47
1:B:223:TYR:HA	1:B:244:TYR:CD1	2.49	0.47
1:D:511:LEU:HA	1:D:511:LEU:HD23	1.64	0.47

*Continued on next page...*

*Continued from previous page...*

Atom-1	Atom-2	Interatomic distance (Å)	Clash overlap (Å)
1:D:539:GLN:HA	1:D:550:VAL:O	2.14	0.47
1:B:331:SER:HA	1:B:342:VAL:HG22	1.96	0.47
1:B:600:ARG:HB2	1:B:601:GLU:OE1	2.13	0.47
1:C:273:TRP:CE3	1:C:273:TRP:HA	2.48	0.47
1:D:493:ILE:HD11	1:D:609:LEU:HD21	1.94	0.47
1:A:466:GLN:O	1:A:470:VAL:HG23	2.14	0.47
1:B:143:GLN:O	1:B:143:GLN:NE2	2.48	0.47
1:B:451:TRP:CE2	1:C:472:PRO:HG3	2.49	0.47
1:C:144:VAL:HG21	1:C:325:CYS:HB3	1.97	0.47
1:D:223:TYR:HA	1:D:244:TYR:CD1	2.49	0.47
1:D:514:PHE:CD1	1:D:520:ILE:HG13	2.49	0.47
1:A:222:ASN:OD1	1:A:289:ARG:NH2	2.44	0.47
1:A:222:ASN:HA	1:A:225:MET:HG2	1.96	0.47
1:A:493:ILE:HD11	1:A:609:LEU:HD21	1.95	0.47
1:B:409:ASN:O	1:B:413:MET:HE3	2.14	0.47
1:B:559:GLY:H	2:B:801:PCG:H4'	1.80	0.47
1:C:222:ASN:HA	1:C:225:MET:HG2	1.97	0.47
1:C:547:LYS:CG	1:C:548:VAL:H	2.22	0.47
1:D:137:LEU:HA	1:D:137:LEU:HD23	1.60	0.47
1:D:326:LEU:HD23	1:D:326:LEU:HA	1.56	0.47
1:D:612:LYS:O	1:D:616:ILE:HG13	2.14	0.47
1:C:215:TYR:HD1	1:C:286:ARG:HD2	1.75	0.47
1:A:156:LEU:HD23	1:A:187:SER:HB2	1.97	0.47
1:A:361:ARG:NH2	1:B:389:TYR:CE2	2.82	0.47
1:B:137:LEU:HD23	1:B:137:LEU:HA	1.61	0.47
1:D:572:GLY:C	1:D:574:ARG:H	2.18	0.47
1:D:572:GLY:C	1:D:574:ARG:N	2.72	0.47
1:A:305:ASN:OD1	1:A:308:ARG:NH1	2.47	0.47
1:D:265:GLY:O	1:D:275:GLY:HA2	2.15	0.47
1:B:526:ILE:HD12	1:B:526:ILE:H	1.80	0.47
1:C:259:PRO:O	1:C:260:LEU:HB2	2.15	0.47
1:D:350:SER:O	1:D:361:ARG:NH1	2.48	0.47
1:B:547:LYS:HG2	1:B:548:VAL:N	2.23	0.47
1:C:222:ASN:OD1	1:C:289:ARG:NH2	2.44	0.47
1:A:560:GLU:OE1	2:A:801:PCG:O2'	2.33	0.46
1:C:181:LYS:HD2	1:C:181:LYS:N	2.30	0.46
1:D:547:LYS:CG	1:D:548:VAL:H	2.21	0.46
1:B:326:LEU:HD23	1:B:326:LEU:HA	1.58	0.46
1:C:223:TYR:HA	1:C:244:TYR:CD1	2.48	0.46
1:C:305:ASN:OD1	1:C:308:ARG:NH1	2.48	0.46
1:D:143:GLN:O	1:D:143:GLN:NE2	2.48	0.46

*Continued on next page...*

*Continued from previous page...*

Atom-1	Atom-2	Interatomic distance (Å)	Clash overlap (Å)
1:A:349:GLN:HG2	1:A:365:TYR:CE1	2.44	0.46
1:B:156:LEU:HD23	1:B:187:SER:HB2	1.97	0.46
1:C:398:CYS:O	1:C:402:ILE:HB	2.16	0.46
1:C:514:PHE:CD1	1:C:520:ILE:HG13	2.50	0.46
1:D:398:CYS:O	1:D:402:ILE:HB	2.16	0.46
1:D:409:ASN:O	1:D:413:MET:HE3	2.15	0.46
1:B:215:TYR:HD1	1:B:286:ARG:HD2	1.77	0.46
1:C:177:LEU:HA	1:C:177:LEU:HD23	1.68	0.46
1:C:331:SER:HA	1:C:342:VAL:HG22	1.97	0.46
1:C:539:GLN:HA	1:C:550:VAL:O	2.16	0.46
1:D:502:LEU:O	1:D:506:VAL:HG23	2.15	0.46
1:D:560:GLU:OE1	2:D:801:PCG:O2'	2.34	0.46
1:A:375:THR:O	1:A:377:ILE:HD12	2.16	0.46
1:A:409:ASN:O	1:A:413:MET:HE3	2.14	0.46
1:A:331:SER:HA	1:A:342:VAL:HG22	1.97	0.46
1:B:312:VAL:HG11	1:B:410:VAL:HG22	1.98	0.46
1:B:350:SER:O	1:B:361:ARG:NH1	2.48	0.46
1:B:475:LEU:HD23	1:B:475:LEU:HA	1.59	0.46
1:D:441:SER:OG	1:D:442:LYS:N	2.49	0.46
1:A:177:LEU:HA	1:A:177:LEU:HD23	1.68	0.46
1:A:215:TYR:HD1	1:A:286:ARG:HD2	1.75	0.46
1:A:387:ILE:O	1:A:390:ALA:HB3	2.15	0.46
1:A:389:TYR:CE2	1:D:361:ARG:NH2	2.82	0.46
1:A:539:GLN:OE1	1:A:580:ARG:NH2	2.37	0.46
1:A:572:GLY:C	1:A:574:ARG:N	2.73	0.46
1:B:134:TYR:CD2	1:B:211:MET:HG3	2.51	0.46
1:C:387:ILE:O	1:C:390:ALA:HB3	2.16	0.46
1:D:116:PRO:HB3	1:D:225:MET:HE1	1.97	0.46
1:D:222:ASN:OD1	1:D:289:ARG:NH2	2.45	0.46
1:D:526:ILE:H	1:D:526:ILE:HD12	1.81	0.46
1:A:265:GLY:HA2	1:A:273:TRP:HE1	1.80	0.46
1:A:142:ARG:HD3	1:A:149:ILE:HD11	1.97	0.46
1:A:155:SER:CB	1:A:172:CYS:HB2	2.46	0.46
1:C:409:ASN:O	1:C:413:MET:HE3	2.16	0.46
1:C:451:TRP:CE2	1:D:472:PRO:HG3	2.51	0.46
1:C:526:ILE:HD12	1:C:526:ILE:H	1.81	0.46
1:C:560:GLU:OE1	2:C:801:PCG:O2'	2.33	0.46
1:D:432:LYS:HB3	1:D:432:LYS:HE3	1.80	0.46
1:D:600:ARG:HB2	1:D:601:GLU:OE1	2.16	0.46
1:A:259:PRO:O	1:A:260:LEU:HB2	2.15	0.45
1:B:375:THR:O	1:B:377:ILE:HD12	2.16	0.45

*Continued on next page...*

*Continued from previous page...*

Atom-1	Atom-2	Interatomic distance (Å)	Clash overlap (Å)
1:D:222:ASN:HA	1:D:225:MET:HG2	1.98	0.45
1:A:144:VAL:HG21	1:A:325:CYS:HB3	1.97	0.45
1:A:600:ARG:HB2	1:A:601:GLU:OE1	2.16	0.45
1:A:181:LYS:HD2	1:A:181:LYS:N	2.30	0.45
1:A:398:CYS:O	1:A:402:ILE:HB	2.16	0.45
1:A:561:LEU:HD23	1:A:561:LEU:HA	1.81	0.45
1:B:539:GLN:HA	1:B:550:VAL:O	2.16	0.45
1:C:156:LEU:HD23	1:C:187:SER:HB2	1.96	0.45
1:A:137:LEU:HD23	1:A:137:LEU:HA	1.63	0.45
1:A:539:GLN:HA	1:A:550:VAL:O	2.16	0.45
1:B:259:PRO:O	1:B:260:LEU:HB2	2.15	0.45
1:B:441:SER:OG	1:B:442:LYS:N	2.50	0.45
1:C:142:ARG:HD3	1:C:149:ILE:HD11	1.97	0.45
1:A:346:LEU:HD23	1:A:346:LEU:HA	1.85	0.45
1:A:451:TRP:CE2	1:B:472:PRO:HG3	2.50	0.45
1:B:142:ARG:HD3	1:B:149:ILE:HD11	1.98	0.45
1:C:155:SER:CB	1:C:172:CYS:HB2	2.46	0.45
1:C:194:TRP:CD1	1:C:194:TRP:N	2.79	0.45
1:C:350:SER:O	1:C:361:ARG:NH1	2.49	0.45
1:B:177:LEU:HD23	1:B:177:LEU:HA	1.68	0.45
1:C:511:LEU:HD23	1:C:511:LEU:HA	1.66	0.45
1:D:259:PRO:O	1:D:260:LEU:HB2	2.16	0.45
1:B:511:LEU:HA	1:B:511:LEU:HD23	1.63	0.45
1:C:600:ARG:HB2	1:C:601:GLU:OE1	2.17	0.45
1:D:331:SER:HA	1:D:342:VAL:HG22	1.97	0.45
1:D:375:THR:O	1:D:377:ILE:HD12	2.17	0.45
1:D:475:LEU:HD23	1:D:475:LEU:HA	1.58	0.45
1:A:116:PRO:HB3	1:A:225:MET:HE1	1.99	0.45
1:A:526:ILE:HD12	1:A:526:ILE:H	1.81	0.45
1:C:441:SER:OG	1:C:442:LYS:N	2.50	0.45
1:D:387:ILE:O	1:D:390:ALA:HB3	2.17	0.45
1:A:218:ASP:OD1	1:A:289:ARG:NH1	2.50	0.45
1:A:280:ARG:NH2	1:A:283:ARG:HD3	2.32	0.45
1:A:441:SER:OG	1:A:442:LYS:N	2.50	0.45
1:B:473:ASP:OD1	1:B:507:LEU:CD2	2.65	0.45
1:C:137:LEU:HD23	1:C:137:LEU:HA	1.61	0.45
1:B:257:LEU:HD21	1:B:286:ARG:NE	2.29	0.44
1:B:387:ILE:O	1:B:390:ALA:HB3	2.17	0.44
1:D:134:TYR:CD2	1:D:211:MET:HG3	2.52	0.44
1:D:156:LEU:HD23	1:D:187:SER:HB2	1.97	0.44
1:D:181:LYS:N	1:D:181:LYS:HD2	2.32	0.44

*Continued on next page...*

*Continued from previous page...*

Atom-1	Atom-2	Interatomic distance (Å)	Clash overlap (Å)
1:D:552:LEU:HD23	1:D:556:SER:HB2	1.99	0.44
1:D:346:LEU:HD23	1:D:346:LEU:HA	1.85	0.44
1:D:435:MET:HE1	1:D:448:VAL:HG21	1.99	0.44
1:A:143:GLN:O	1:A:143:GLN:NE2	2.50	0.44
1:A:473:ASP:OD1	1:A:507:LEU:CD2	2.65	0.44
1:C:143:GLN:O	1:C:143:GLN:NE2	2.51	0.44
1:C:280:ARG:NH2	1:C:283:ARG:HD3	2.32	0.44
1:D:295:GLU:O	1:D:299:THR:HG23	2.18	0.44
1:A:511:LEU:HA	1:A:511:LEU:HD23	1.65	0.44
1:B:560:GLU:OE1	2:B:801:PCG:O2'	2.35	0.44
1:C:473:ASP:OD1	1:C:507:LEU:CD2	2.63	0.44
1:C:475:LEU:HD23	1:C:475:LEU:HA	1.62	0.44
1:D:209:LEU:HD12	1:D:209:LEU:HA	1.86	0.44
1:B:295:GLU:O	1:B:299:THR:HG23	2.18	0.44
1:B:321:HIS:ND1	1:B:363:TYR:OH	2.36	0.44
1:A:295:GLU:O	1:A:299:THR:HG23	2.18	0.44
1:A:513:VAL:HG22	1:A:586:ASP:OD1	2.18	0.44
1:C:134:TYR:CD2	1:C:211:MET:HG3	2.53	0.44
1:C:257:LEU:HD21	1:C:286:ARG:NE	2.29	0.44
1:C:375:THR:O	1:C:377:ILE:HD12	2.18	0.44
1:D:177:LEU:HD23	1:D:177:LEU:HA	1.68	0.44
1:D:321:HIS:CE1	1:D:363:TYR:HH	2.29	0.44
1:A:236:GLU:OE1	1:A:239:LYS:HD2	2.17	0.44
1:A:552:LEU:HD23	1:A:556:SER:HB2	2.00	0.44
1:C:209:LEU:HD12	1:C:209:LEU:HA	1.86	0.44
1:B:155:SER:CB	1:B:172:CYS:HB2	2.48	0.44
1:C:312:VAL:HG11	1:C:410:VAL:HG22	2.00	0.44
1:D:513:VAL:HG22	1:D:586:ASP:OD1	2.18	0.44
1:A:542:ASP:O	1:A:543:ASP:CB	2.65	0.43
1:B:398:CYS:O	1:B:402:ILE:HB	2.17	0.43
1:B:116:PRO:HB3	1:B:225:MET:HE1	2.00	0.43
1:B:348:LYS:HE2	1:B:348:LYS:HB2	1.84	0.43
1:D:280:ARG:NH2	1:D:283:ARG:HD3	2.33	0.43
1:A:475:LEU:HD23	1:A:475:LEU:HA	1.61	0.43
1:B:181:LYS:HD2	1:B:181:LYS:N	2.33	0.43
1:B:280:ARG:NH2	1:B:283:ARG:HD3	2.33	0.43
1:B:523:LYS:HE3	1:B:542:ASP:CG	2.43	0.43
1:C:523:LYS:HE3	1:C:542:ASP:CG	2.43	0.43
1:D:210:LEU:O	1:D:214:VAL:HG23	2.19	0.43
1:B:513:VAL:HG22	1:B:586:ASP:OD1	2.19	0.43
1:C:178:THR:OG1	1:C:356:THR:HG22	2.18	0.43

*Continued on next page...*

*Continued from previous page...*

Atom-1	Atom-2	Interatomic distance (Å)	Clash overlap (Å)
1:C:513:VAL:HG22	1:C:586:ASP:OD1	2.18	0.43
1:D:305:ASN:OD1	1:D:308:ARG:NH1	2.52	0.43
1:C:189:TYR:HB2	1:C:192:LEU:HA	2.00	0.43
1:C:295:GLU:O	1:C:299:THR:HG23	2.18	0.43
1:C:607:LYS:HA	1:C:607:LYS:HD3	1.80	0.43
1:A:189:TYR:HB2	1:A:192:LEU:HA	1.98	0.43
1:A:321:HIS:ND1	1:A:363:TYR:OH	2.34	0.43
1:B:178:THR:OG1	1:B:356:THR:HG22	2.18	0.43
1:B:494:PHE:CD1	1:B:502:LEU:HD12	2.54	0.43
1:B:257:LEU:H	1:B:257:LEU:HD13	1.83	0.43
1:B:435:MET:HE1	1:B:448:VAL:HG21	2.01	0.43
1:B:490:LYS:HE2	1:B:490:LYS:HB3	1.89	0.43
1:D:178:THR:OG1	1:D:356:THR:HG22	2.18	0.43
1:C:218:ASP:OD1	1:C:289:ARG:NH1	2.52	0.43
1:A:205:VAL:O	1:A:209:LEU:HB2	2.19	0.43
1:A:402:ILE:HG22	1:A:403:PHE:CD1	2.54	0.43
1:A:134:TYR:CD2	1:A:211:MET:HG3	2.53	0.43
1:A:542:ASP:N	1:A:547:LYS:HD2	2.33	0.43
1:B:402:ILE:HG22	1:B:403:PHE:CD1	2.54	0.43
1:A:347:ASN:OD1	1:A:347:ASN:O	2.37	0.42
1:B:205:VAL:O	1:B:209:LEU:HB2	2.19	0.42
1:A:257:LEU:HD13	1:A:257:LEU:H	1.84	0.42
1:A:459:LYS:HD2	1:A:459:LYS:HA	1.78	0.42
1:B:160:TYR:O	1:B:161:ASN:HB2	2.19	0.42
1:B:347:ASN:OD1	1:B:347:ASN:O	2.37	0.42
1:C:402:ILE:HG22	1:C:403:PHE:CD1	2.54	0.42
1:C:472:PRO:HD2	1:C:475:LEU:HB2	2.01	0.42
1:D:236:GLU:OE1	1:D:239:LYS:HD2	2.20	0.42
1:D:473:ASP:OD1	1:D:507:LEU:CD2	2.67	0.42
1:A:472:PRO:HG3	1:D:451:TRP:CE2	2.53	0.42
1:A:532:ILE:HG12	1:A:557:VAL:HG22	2.02	0.42
1:B:472:PRO:HD2	1:B:475:LEU:HB2	2.00	0.42
1:C:435:MET:HE1	1:C:448:VAL:HG21	2.01	0.42
1:B:364:VAL:HG12	1:B:365:TYR:N	2.35	0.42
1:C:542:ASP:N	1:C:547:LYS:HD2	2.34	0.42
1:A:265:GLY:O	1:A:275:GLY:HA2	2.19	0.42
1:C:413:MET:HE3	1:C:413:MET:HB2	1.97	0.42
1:D:160:TYR:O	1:D:161:ASN:HB2	2.20	0.42
1:D:552:LEU:HB3	1:D:556:SER:OG	2.19	0.42
1:B:542:ASP:N	1:B:547:LYS:HD2	2.35	0.42
1:C:494:PHE:CD1	1:C:502:LEU:HD12	2.55	0.42

*Continued on next page...*

*Continued from previous page...*

Atom-1	Atom-2	Interatomic distance (Å)	Clash overlap (Å)
1:C:552:LEU:HD23	1:C:556:SER:HB2	2.02	0.42
1:A:210:LEU:O	1:A:214:VAL:HG23	2.20	0.42
1:C:257:LEU:HD13	1:C:257:LEU:H	1.85	0.42
1:C:561:LEU:HD23	1:C:561:LEU:HA	1.82	0.42
1:D:155:SER:CB	1:D:172:CYS:HB2	2.47	0.42
1:C:116:PRO:HB3	1:C:225:MET:HE1	2.00	0.42
1:D:459:LYS:HD2	1:D:459:LYS:HA	1.80	0.42
1:A:402:ILE:HG22	1:A:403:PHE:HD1	1.85	0.42
1:A:552:LEU:HB3	1:A:556:SER:OG	2.20	0.42
1:B:276:LEU:O	1:B:277:PRO:C	2.60	0.42
1:D:257:LEU:HD13	1:D:257:LEU:H	1.84	0.42
1:D:309:VAL:O	1:D:313:VAL:HG23	2.19	0.42
1:A:257:LEU:HD21	1:A:286:ARG:NE	2.28	0.41
1:B:222:ASN:OD1	1:B:289:ARG:NH2	2.44	0.41
1:C:262:TYR:O	1:C:266:TRP:N	2.53	0.41
1:C:309:VAL:O	1:C:313:VAL:HG23	2.20	0.41
1:A:160:TYR:O	1:A:161:ASN:HB2	2.20	0.41
1:A:364:VAL:HG12	1:A:365:TYR:N	2.36	0.41
1:B:346:LEU:HD23	1:B:346:LEU:HA	1.85	0.41
1:B:413:MET:HE3	1:B:413:MET:HB2	1.94	0.41
1:C:552:LEU:HB3	1:C:556:SER:OG	2.19	0.41
1:D:532:ILE:HG12	1:D:557:VAL:HG22	2.01	0.41
1:B:135:ASN:HD21	1:B:215:TYR:HE2	1.68	0.41
1:B:189:TYR:HB2	1:B:192:LEU:HA	2.02	0.41
1:B:309:VAL:O	1:B:313:VAL:HG23	2.20	0.41
1:B:532:ILE:HG12	1:B:557:VAL:HG22	2.02	0.41
1:C:205:VAL:O	1:C:209:LEU:HB2	2.20	0.41
1:D:402:ILE:HG22	1:D:403:PHE:CD1	2.56	0.41
1:C:148:LEU:HD21	1:C:204:TRP:CZ2	2.56	0.41
1:C:160:TYR:O	1:C:161:ASN:HB2	2.19	0.41
1:C:347:ASN:OD1	1:C:347:ASN:O	2.38	0.41
1:D:205:VAL:O	1:D:209:LEU:HB2	2.19	0.41
1:D:472:PRO:HD2	1:D:475:LEU:HB2	2.03	0.41
1:A:178:THR:OG1	1:A:356:THR:HG22	2.20	0.41
1:C:236:GLU:OE1	1:C:239:LYS:HD2	2.20	0.41
1:C:278:ILE:O	1:C:281:LEU:HG	2.21	0.41
1:C:361:ARG:NH2	1:D:389:TYR:CZ	2.88	0.41
1:C:402:ILE:HG22	1:C:403:PHE:N	2.36	0.41
1:D:271:ILE:H	1:D:271:ILE:HG13	1.66	0.41
1:D:364:VAL:HG12	1:D:365:TYR:N	2.35	0.41
1:D:553:GLN:O	1:D:556:SER:OG	2.27	0.41

*Continued on next page...*

*Continued from previous page...*

Atom-1	Atom-2	Interatomic distance (Å)	Clash overlap (Å)
1:A:384:VAL:HG12	1:A:384:VAL:O	2.21	0.41
1:B:273:TRP:HA	1:B:273:TRP:HE3	1.86	0.41
1:B:552:LEU:HD23	1:B:556:SER:HB2	2.03	0.41
1:C:192:LEU:H	1:C:192:LEU:HD23	1.85	0.41
1:C:194:TRP:HA	1:C:197:TYR:O	2.21	0.41
1:C:210:LEU:O	1:C:214:VAL:HG23	2.21	0.41
1:C:326:LEU:HD23	1:C:326:LEU:HA	1.59	0.41
1:D:347:ASN:OD1	1:D:347:ASN:O	2.38	0.41
1:D:481:MET:SD	1:D:502:LEU:HD21	2.61	0.41
1:A:312:VAL:HG11	1:A:410:VAL:HG22	2.02	0.41
1:C:384:VAL:O	1:C:384:VAL:HG12	2.21	0.41
1:C:402:ILE:HG22	1:C:403:PHE:HD1	1.85	0.41
1:D:113:THR:HA	1:D:224:ARG:HB3	2.02	0.41
1:C:364:VAL:HG12	1:C:365:TYR:N	2.35	0.41
1:C:427:LYS:HA	1:C:427:LYS:HD2	1.94	0.41
1:D:135:ASN:HD21	1:D:215:TYR:HE2	1.69	0.41
1:D:384:VAL:O	1:D:384:VAL:HG12	2.21	0.41
1:D:402:ILE:HG22	1:D:403:PHE:HD1	1.86	0.41
1:B:402:ILE:HG22	1:B:403:PHE:HD1	1.86	0.41
1:B:442:LYS:HD2	1:B:442:LYS:HA	1.89	0.41
1:C:113:THR:HA	1:C:224:ARG:HB3	2.03	0.41
1:C:321:HIS:ND1	1:C:363:TYR:OH	2.36	0.41
1:C:479:ILE:HG21	1:C:479:ILE:HD13	1.84	0.41
1:D:143:GLN:HA	1:D:277:PRO:HG2	2.03	0.41
1:D:194:TRP:H	1:D:194:TRP:HD1	1.65	0.41
1:A:156:LEU:CD2	1:A:187:SER:HB2	2.51	0.41
1:D:178:THR:HG23	1:D:355:ILE:C	2.46	0.41
1:A:178:THR:HG23	1:A:355:ILE:C	2.46	0.40
1:B:178:THR:HG23	1:B:355:ILE:C	2.46	0.40
1:B:210:LEU:O	1:B:214:VAL:HG23	2.20	0.40
1:B:313:VAL:HA	1:B:316:ILE:HD12	2.03	0.40
1:B:343:TYR:CD2	1:B:343:TYR:C	2.99	0.40
1:C:178:THR:HG23	1:C:355:ILE:C	2.46	0.40
1:C:490:LYS:HE2	1:C:490:LYS:HB3	1.88	0.40
1:C:603:PRO:O	1:C:606:ARG:HB2	2.21	0.40
1:A:242:LYS:O	1:A:246:GLN:HG2	2.21	0.40
1:A:265:GLY:O	1:A:276:LEU:N	2.52	0.40
1:A:271:ILE:H	1:A:271:ILE:HG13	1.65	0.40
1:D:265:GLY:O	1:D:276:LEU:N	2.53	0.40
1:A:143:GLN:HA	1:A:277:PRO:HG2	2.03	0.40
1:B:331:SER:OG	1:B:342:VAL:HG22	2.22	0.40

*Continued on next page...*

Continued from previous page...

Atom-1	Atom-2	Interatomic distance (Å)	Clash overlap (Å)
1:A:278:ILE:O	1:A:281:LEU:HG	2.20	0.40
1:A:331:SER:OG	1:A:342:VAL:HG22	2.22	0.40
1:A:432:LYS:NZ	1:B:301:SER:O	2.47	0.40
1:B:148:LEU:HD21	1:B:204:TRP:CZ2	2.56	0.40
1:B:266:TRP:CG	1:B:267:PRO:HD2	2.56	0.40
1:B:384:VAL:HG12	1:B:384:VAL:O	2.21	0.40
1:B:481:MET:SD	1:B:502:LEU:HD21	2.62	0.40
1:C:345:HIS:CD2	1:C:346:LEU:HG	2.56	0.40
1:D:494:PHE:CD1	1:D:502:LEU:HD12	2.56	0.40
1:A:273:TRP:HA	1:A:273:TRP:HE3	1.87	0.40
1:B:113:THR:HA	1:B:224:ARG:HB3	2.02	0.40
1:B:278:ILE:O	1:B:281:LEU:HG	2.22	0.40
1:C:129:THR:O	1:C:133:ILE:HG12	2.22	0.40
1:D:189:TYR:HB2	1:D:192:LEU:HA	2.02	0.40
1:D:194:TRP:HA	1:D:197:TYR:O	2.22	0.40

There are no symmetry-related clashes.

## 5.3 Torsion angles [i](#)

### 5.3.1 Protein backbone [i](#)

In the following table, the Percentiles column shows the percent Ramachandran outliers of the chain as a percentile score with respect to all PDB entries followed by that with respect to all EM entries.

The Analysed column shows the number of residues for which the backbone conformation was analysed, and the total number of residues.

Mol	Chain	Analysed	Favoured	Allowed	Outliers	Percentiles
1	A	506/738 (69%)	474 (94%)	29 (6%)	3 (1%)	21 54
1	B	506/738 (69%)	472 (93%)	31 (6%)	3 (1%)	21 54
1	C	506/738 (69%)	473 (94%)	30 (6%)	3 (1%)	21 54
1	D	506/738 (69%)	472 (93%)	31 (6%)	3 (1%)	21 54
All	All	2024/2952 (69%)	1891 (93%)	121 (6%)	12 (1%)	23 54

All (12) Ramachandran outliers are listed below:

Mol	Chain	Res	Type
1	A	573	ASN
1	B	573	ASN
1	C	573	ASN
1	D	573	ASN
1	A	148	LEU
1	B	148	LEU
1	C	148	LEU
1	D	148	LEU
1	A	258	ILE
1	D	258	ILE
1	B	258	ILE
1	C	258	ILE

### 5.3.2 Protein sidechains [i](#)

In the following table, the Percentiles column shows the percent sidechain outliers of the chain as a percentile score with respect to all PDB entries followed by that with respect to all EM entries.

The Analysed column shows the number of residues for which the sidechain conformation was analysed, and the total number of residues.

Mol	Chain	Analysed	Rotameric	Outliers	Percentiles	
1	A	462/652 (71%)	432 (94%)	30 (6%)	15	42
1	B	462/652 (71%)	431 (93%)	31 (7%)	15	41
1	C	462/652 (71%)	432 (94%)	30 (6%)	15	42
1	D	462/652 (71%)	432 (94%)	30 (6%)	15	42
All	All	1848/2608 (71%)	1727 (94%)	121 (6%)	17	42

All (121) residues with a non-rotameric sidechain are listed below:

Mol	Chain	Res	Type
1	A	181	LYS
1	A	192	LEU
1	A	210	LEU
1	A	257	LEU
1	A	271	ILE
1	A	272	ASN
1	A	273	TRP
1	A	291	ARG
1	A	310	VAL
1	A	342	VAL

*Continued on next page...*

*Continued from previous page...*

<b>Mol</b>	<b>Chain</b>	<b>Res</b>	<b>Type</b>
1	A	355	ILE
1	A	361	ARG
1	A	364	VAL
1	A	396	LEU
1	A	402	ILE
1	A	413	MET
1	A	423	GLU
1	A	460	GLN
1	A	463	SER
1	A	465	GLN
1	A	467	VAL
1	A	469	LYS
1	A	471	LEU
1	A	474	LYS
1	A	507	LEU
1	A	513	VAL
1	A	523	LYS
1	A	538	LEU
1	A	578	ASN
1	A	617	LEU
1	B	181	LYS
1	B	192	LEU
1	B	210	LEU
1	B	257	LEU
1	B	271	ILE
1	B	272	ASN
1	B	273	TRP
1	B	291	ARG
1	B	310	VAL
1	B	342	VAL
1	B	355	ILE
1	B	361	ARG
1	B	364	VAL
1	B	396	LEU
1	B	402	ILE
1	B	413	MET
1	B	423	GLU
1	B	448	VAL
1	B	460	GLN
1	B	463	SER
1	B	465	GLN
1	B	467	VAL

*Continued on next page...*

*Continued from previous page...*

<b>Mol</b>	<b>Chain</b>	<b>Res</b>	<b>Type</b>
1	B	469	LYS
1	B	471	LEU
1	B	474	LYS
1	B	507	LEU
1	B	513	VAL
1	B	523	LYS
1	B	538	LEU
1	B	578	ASN
1	B	617	LEU
1	C	176	MET
1	C	181	LYS
1	C	192	LEU
1	C	210	LEU
1	C	257	LEU
1	C	271	ILE
1	C	272	ASN
1	C	273	TRP
1	C	291	ARG
1	C	310	VAL
1	C	342	VAL
1	C	355	ILE
1	C	361	ARG
1	C	364	VAL
1	C	396	LEU
1	C	402	ILE
1	C	413	MET
1	C	423	GLU
1	C	460	GLN
1	C	463	SER
1	C	465	GLN
1	C	467	VAL
1	C	469	LYS
1	C	471	LEU
1	C	474	LYS
1	C	507	LEU
1	C	523	LYS
1	C	538	LEU
1	C	578	ASN
1	C	617	LEU
1	D	181	LYS
1	D	192	LEU
1	D	210	LEU

*Continued on next page...*

*Continued from previous page...*

Mol	Chain	Res	Type
1	D	257	LEU
1	D	271	ILE
1	D	272	ASN
1	D	273	TRP
1	D	291	ARG
1	D	310	VAL
1	D	342	VAL
1	D	355	ILE
1	D	361	ARG
1	D	364	VAL
1	D	396	LEU
1	D	402	ILE
1	D	413	MET
1	D	423	GLU
1	D	448	VAL
1	D	460	GLN
1	D	463	SER
1	D	465	GLN
1	D	467	VAL
1	D	469	LYS
1	D	471	LEU
1	D	474	LYS
1	D	507	LEU
1	D	523	LYS
1	D	538	LEU
1	D	578	ASN
1	D	617	LEU

Sometimes sidechains can be flipped to improve hydrogen bonding and reduce clashes. All (10) such sidechains are listed below:

Mol	Chain	Res	Type
1	A	246	GLN
1	B	246	GLN
1	B	386	ASN
1	B	571	ASN
1	C	246	GLN
1	C	323	ASN
1	C	386	ASN
1	D	246	GLN
1	D	386	ASN
1	D	571	ASN

### 5.3.3 RNA [i](#)

There are no RNA molecules in this entry.

## 5.4 Non-standard residues in protein, DNA, RNA chains [i](#)

There are no non-standard protein/DNA/RNA residues in this entry.

## 5.5 Carbohydrates [i](#)

There are no oligosaccharides in this entry.

## 5.6 Ligand geometry [i](#)

Of 7 ligands modelled in this entry, 3 are monoatomic - leaving 4 for Mogul analysis.

In the following table, the Counts columns list the number of bonds (or angles) for which Mogul statistics could be retrieved, the number of bonds (or angles) that are observed in the model and the number of bonds (or angles) that are defined in the Chemical Component Dictionary. The Link column lists molecule types, if any, to which the group is linked. The Z score for a bond length (or angle) is the number of standard deviations the observed value is removed from the expected value. A bond length (or angle) with  $|Z| > 2$  is considered an outlier worth inspection. RMSZ is the root-mean-square of all Z scores of the bond lengths (or angles).

Mol	Type	Chain	Res	Link	Bond lengths			Bond angles		
					Counts	RMSZ	# Z  > 2	Counts	RMSZ	# Z  > 2
2	PCG	D	801	-	26,26,26	1.94	4 (15%)	39,41,41	2.04	12 (30%)
2	PCG	A	801	-	26,26,26	1.95	4 (15%)	39,41,41	2.07	12 (30%)
2	PCG	B	801	-	26,26,26	1.95	4 (15%)	39,41,41	2.06	12 (30%)
2	PCG	C	801	-	26,26,26	1.95	4 (15%)	39,41,41	2.05	12 (30%)

In the following table, the Chirals column lists the number of chiral outliers, the number of chiral centers analysed, the number of these observed in the model and the number defined in the Chemical Component Dictionary. Similar counts are reported in the Torsion and Rings columns. '-' means no outliers of that kind were identified.

Mol	Type	Chain	Res	Link	Chirals	Torsions	Rings
2	PCG	D	801	-	-	1/4/31/31	0/4/4/4
2	PCG	A	801	-	-	1/4/31/31	0/4/4/4
2	PCG	B	801	-	-	1/4/31/31	0/4/4/4
2	PCG	C	801	-	-	2/4/31/31	0/4/4/4

All (16) bond length outliers are listed below:

Mol	Chain	Res	Type	Atoms	Z	Observed(Å)	Ideal(Å)
2	A	801	PCG	PA-O5'	6.26	1.64	1.57
2	B	801	PCG	PA-O5'	6.22	1.64	1.57
2	C	801	PCG	PA-O5'	6.21	1.64	1.57
2	D	801	PCG	PA-O5'	6.19	1.64	1.57
2	C	801	PCG	PA-O3'	3.98	1.64	1.57
2	D	801	PCG	PA-O3'	3.96	1.64	1.57
2	B	801	PCG	PA-O3'	3.91	1.64	1.57
2	A	801	PCG	PA-O3'	3.88	1.64	1.57
2	D	801	PCG	C5-N7	-3.41	1.32	1.39
2	B	801	PCG	C5-N7	-3.39	1.32	1.39
2	C	801	PCG	C5-N7	-3.37	1.32	1.39
2	A	801	PCG	C5-N7	-3.36	1.32	1.39
2	C	801	PCG	O4'-C1'	2.75	1.48	1.42
2	B	801	PCG	O4'-C1'	2.75	1.48	1.42
2	A	801	PCG	O4'-C1'	2.74	1.48	1.42
2	D	801	PCG	O4'-C1'	2.70	1.48	1.42

All (48) bond angle outliers are listed below:

Mol	Chain	Res	Type	Atoms	Z	Observed(°)	Ideal(°)
2	A	801	PCG	C5-C4-N3	-5.24	120.06	128.39
2	A	801	PCG	C2-N3-C4	5.22	121.29	112.30
2	B	801	PCG	C2-N3-C4	5.21	121.27	112.30
2	B	801	PCG	C5-C4-N3	-5.18	120.14	128.39
2	C	801	PCG	C5-C4-N3	-5.18	120.14	128.39
2	C	801	PCG	C2-N3-C4	5.17	121.21	112.30
2	D	801	PCG	C2-N3-C4	5.16	121.20	112.30
2	D	801	PCG	C5-C4-N3	-5.11	120.25	128.39
2	A	801	PCG	O3'-C3'-C4'	-4.13	107.59	110.71
2	B	801	PCG	O3'-C3'-C4'	-4.00	107.69	110.71
2	D	801	PCG	O3'-C3'-C4'	-3.96	107.72	110.71
2	C	801	PCG	O3'-C3'-C4'	-3.93	107.75	110.71
2	A	801	PCG	C2-N1-C6	-3.53	118.71	125.11
2	B	801	PCG	C2-N1-C6	-3.50	118.77	125.11
2	D	801	PCG	C2-N1-C6	-3.49	118.77	125.11
2	C	801	PCG	C2-N1-C6	-3.49	118.78	125.11
2	C	801	PCG	N9-C4-N3	3.38	132.71	125.95
2	A	801	PCG	N9-C4-N3	3.37	132.69	125.95
2	B	801	PCG	N9-C4-N3	3.36	132.68	125.95
2	D	801	PCG	N9-C4-N3	3.33	132.61	125.95
2	A	801	PCG	O1A-PA-O2A	3.18	118.34	108.56
2	C	801	PCG	O1A-PA-O2A	3.18	118.33	108.56

*Continued on next page...*

Continued from previous page...

Mol	Chain	Res	Type	Atoms	Z	Observed(°)	Ideal(°)
2	D	801	PCG	O1A-PA-O2A	3.18	118.33	108.56
2	B	801	PCG	O1A-PA-O2A	3.16	118.28	108.56
2	A	801	PCG	O3'-C3'-C2'	-3.04	112.62	115.61
2	B	801	PCG	O3'-C3'-C2'	-3.01	112.66	115.61
2	D	801	PCG	O3'-C3'-C2'	-2.86	112.80	115.61
2	C	801	PCG	O3'-C3'-C2'	-2.85	112.81	115.61
2	C	801	PCG	C8-N7-C5	2.54	108.78	104.26
2	C	801	PCG	N9-C8-N7	-2.51	108.74	113.40
2	B	801	PCG	C8-N7-C5	2.48	108.69	104.26
2	B	801	PCG	N9-C8-N7	-2.48	108.81	113.40
2	A	801	PCG	C8-N7-C5	2.47	108.66	104.26
2	D	801	PCG	C8-N7-C5	2.45	108.62	104.26
2	D	801	PCG	N9-C8-N7	-2.44	108.88	113.40
2	A	801	PCG	N9-C8-N7	-2.44	108.88	113.40
2	A	801	PCG	C5-C6-N1	2.34	119.21	113.25
2	B	801	PCG	C5-C6-N1	2.32	119.15	113.25
2	C	801	PCG	C5-C6-N1	2.31	119.13	113.25
2	D	801	PCG	C5-C6-N1	2.31	119.12	113.25
2	C	801	PCG	C4-C5-N7	-2.23	107.14	110.67
2	D	801	PCG	O6-C6-C5	-2.21	120.70	126.53
2	A	801	PCG	C4-C5-N7	-2.21	107.17	110.67
2	B	801	PCG	C4-C5-N7	-2.20	107.18	110.67
2	A	801	PCG	O6-C6-C5	-2.19	120.76	126.53
2	B	801	PCG	O6-C6-C5	-2.17	120.80	126.53
2	C	801	PCG	O6-C6-C5	-2.14	120.89	126.53
2	D	801	PCG	C4-C5-N7	-2.13	107.30	110.67

There are no chirality outliers.

All (5) torsion outliers are listed below:

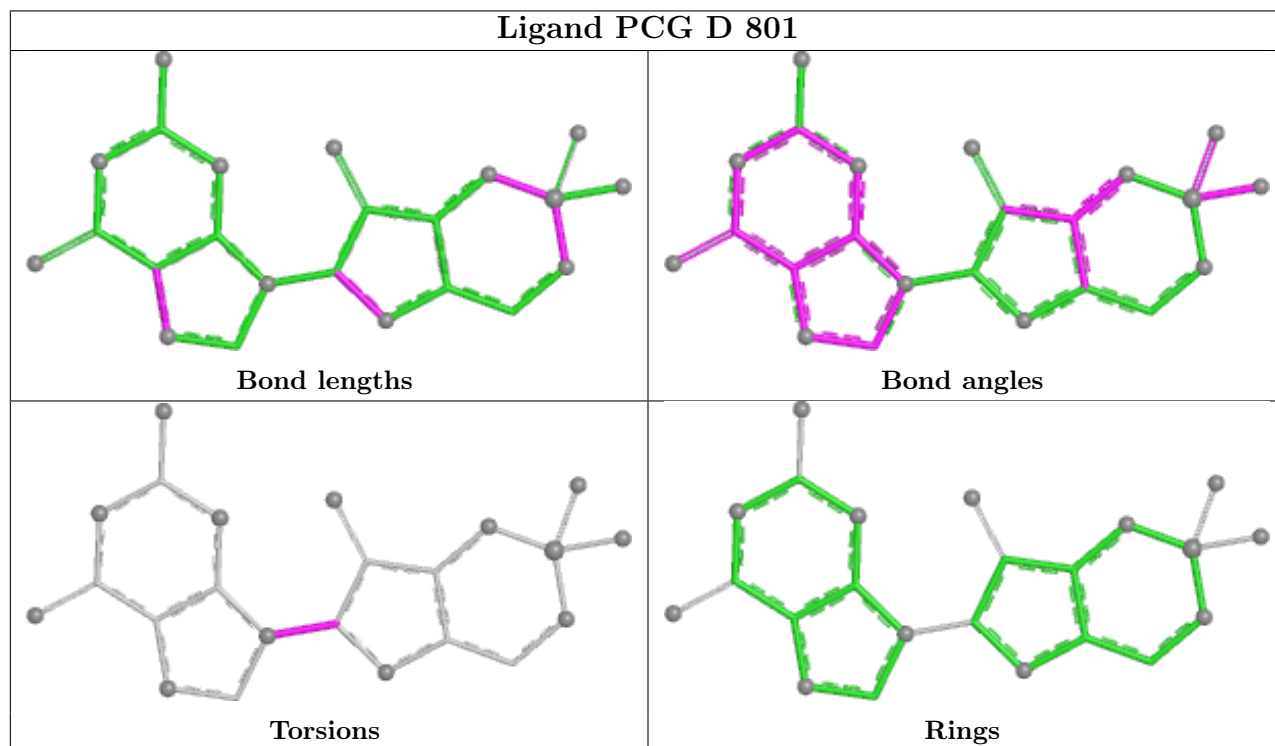
Mol	Chain	Res	Type	Atoms
2	A	801	PCG	C2'-C1'-N9-C8
2	B	801	PCG	C2'-C1'-N9-C8
2	D	801	PCG	C2'-C1'-N9-C8
2	C	801	PCG	C2'-C1'-N9-C8
2	C	801	PCG	C2'-C1'-N9-C4

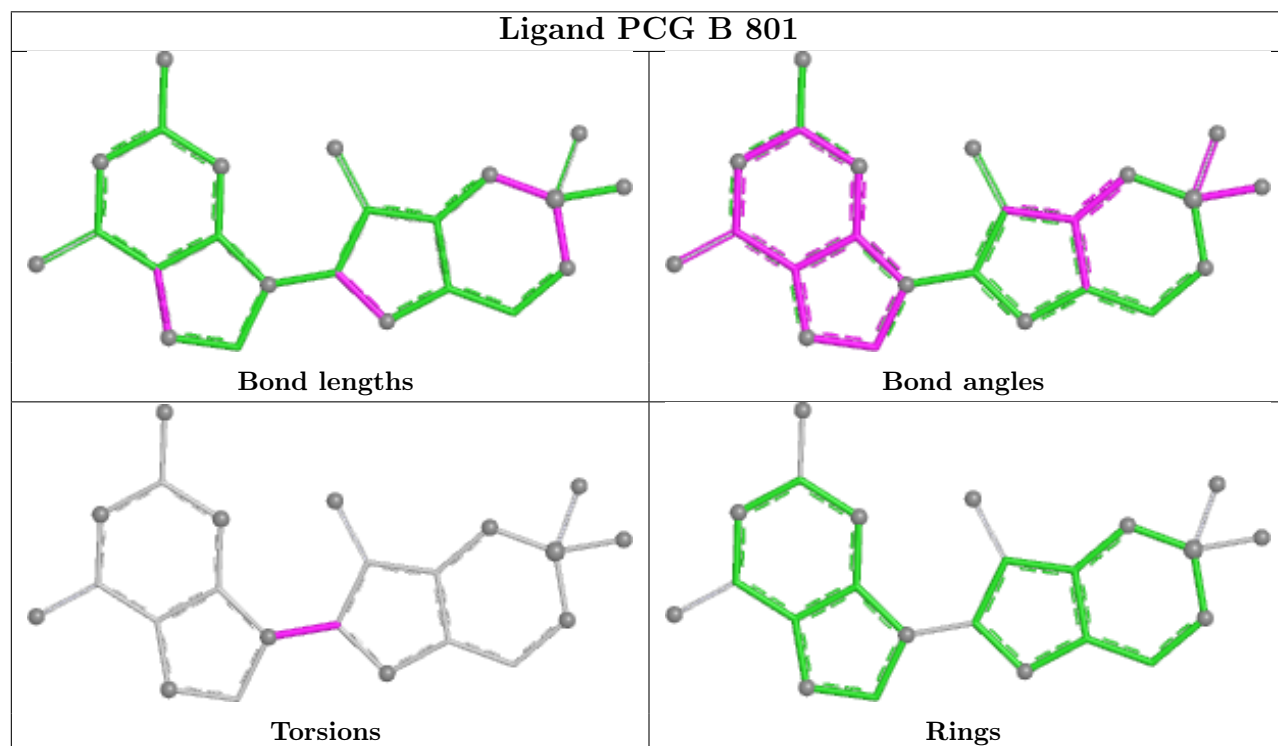
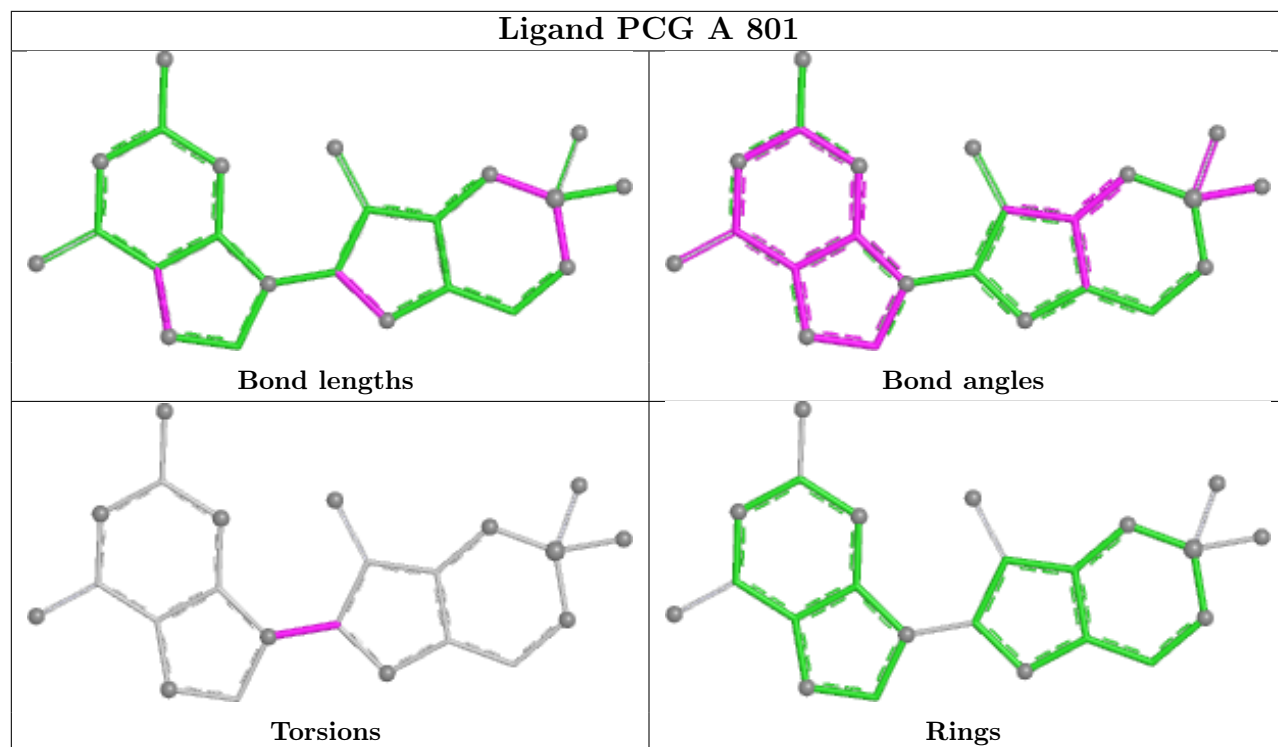
There are no ring outliers.

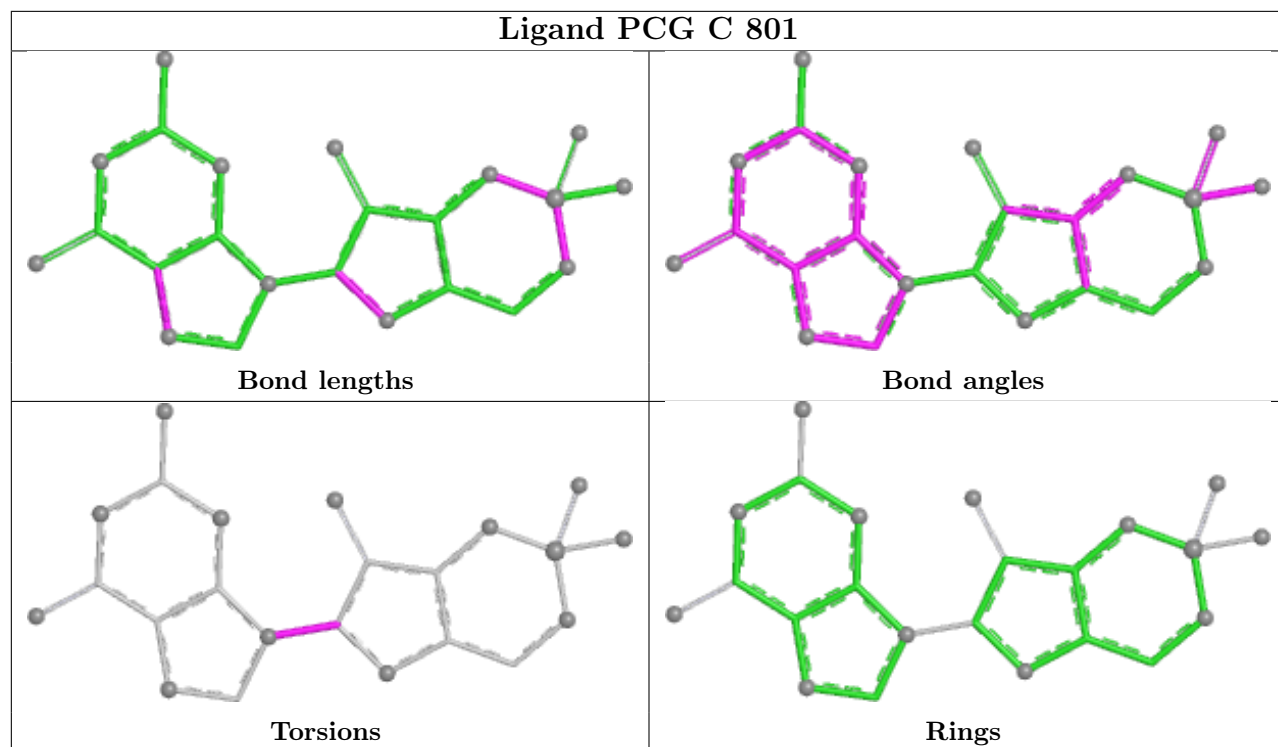
4 monomers are involved in 8 short contacts:

Mol	Chain	Res	Type	Clashes	Symm-Clashes
2	D	801	PCG	2	0
2	A	801	PCG	2	0
2	B	801	PCG	2	0
2	C	801	PCG	2	0

The following is a two-dimensional graphical depiction of Mogul quality analysis of bond lengths, bond angles, torsion angles, and ring geometry for all instances of the Ligand of Interest. In addition, ligands with molecular weight > 250 and outliers as shown on the validation Tables will also be included. For torsion angles, if less than 5% of the Mogul distribution of torsion angles is within 10 degrees of the torsion angle in question, then that torsion angle is considered an outlier. Any bond that is central to one or more torsion angles identified as an outlier by Mogul will be highlighted in the graph. For rings, the root-mean-square deviation (RMSD) between the ring in question and similar rings identified by Mogul is calculated over all ring torsion angles. If the average RMSD is greater than 60 degrees and the minimal RMSD between the ring in question and any Mogul-identified rings is also greater than 60 degrees, then that ring is considered an outlier. The outliers are highlighted in purple. The color gray indicates Mogul did not find sufficient equivalents in the CSD to analyse the geometry.







## 5.7 Other polymers [i](#)

There are no such residues in this entry.

## 5.8 Polymer linkage issues [i](#)

There are no chain breaks in this entry.

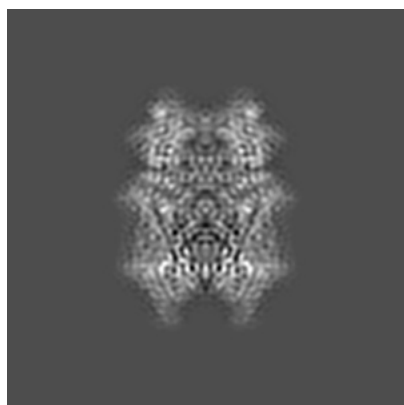
## 6 Map visualisation [i](#)

This section contains visualisations of the EMDB entry EMD-6656. These allow visual inspection of the internal detail of the map and identification of artifacts.

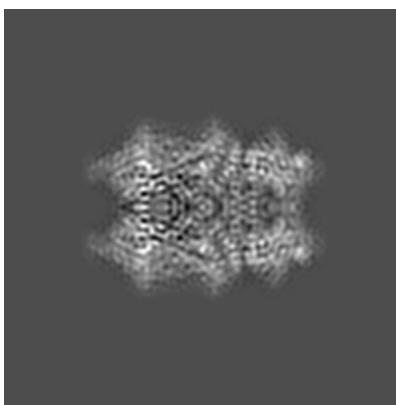
No raw map or half-maps were deposited for this entry and therefore no images, graphs, etc. pertaining to the raw map can be shown.

### 6.1 Orthogonal projections [i](#)

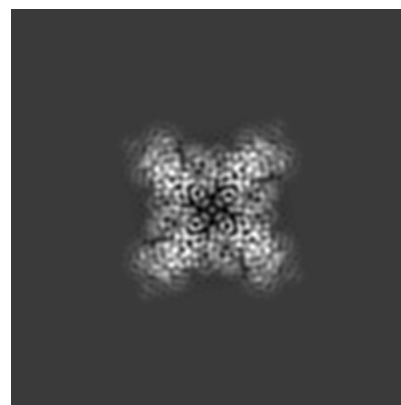
#### 6.1.1 Primary map



X



Y



Z

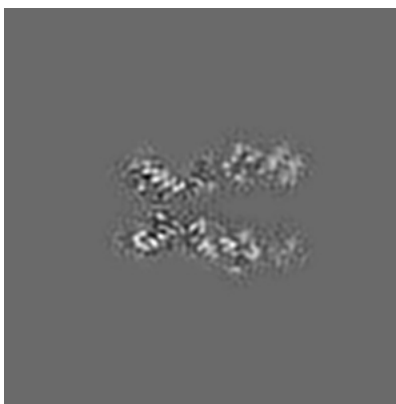
The images above show the map projected in three orthogonal directions.

### 6.2 Central slices [i](#)

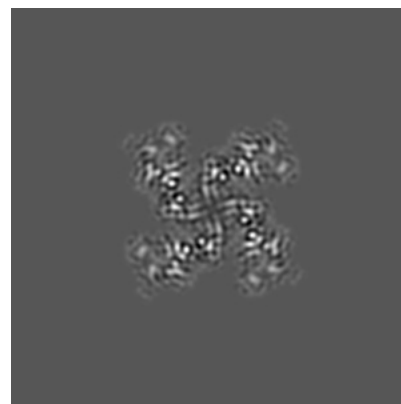
#### 6.2.1 Primary map



X Index: 80



Y Index: 80

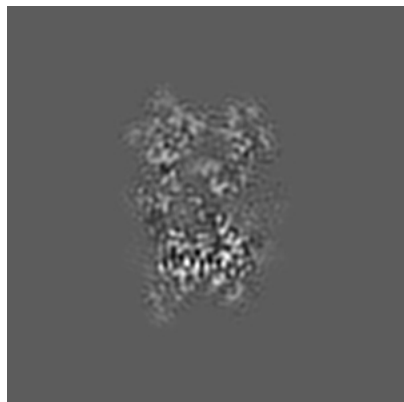


Z Index: 80

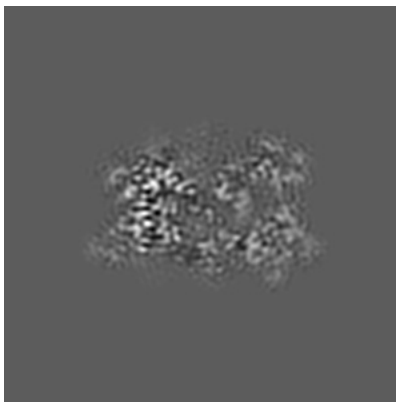
The images above show central slices of the map in three orthogonal directions.

## 6.3 Largest variance slices [i](#)

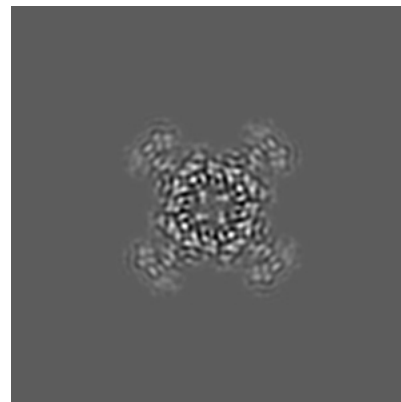
### 6.3.1 Primary map



X Index: 69



Y Index: 90

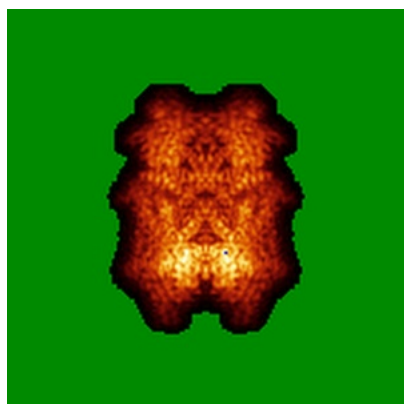


Z Index: 57

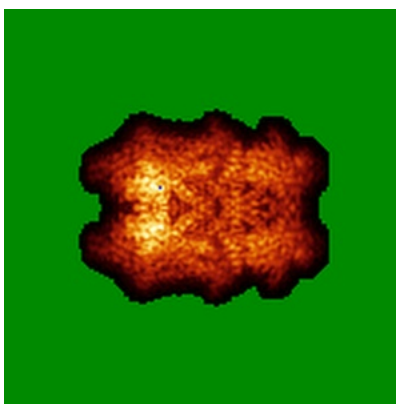
The images above show the largest variance slices of the map in three orthogonal directions.

## 6.4 Orthogonal standard-deviation projections (False-color) [i](#)

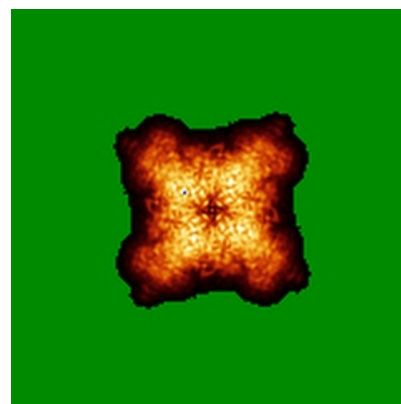
### 6.4.1 Primary map



X



Y

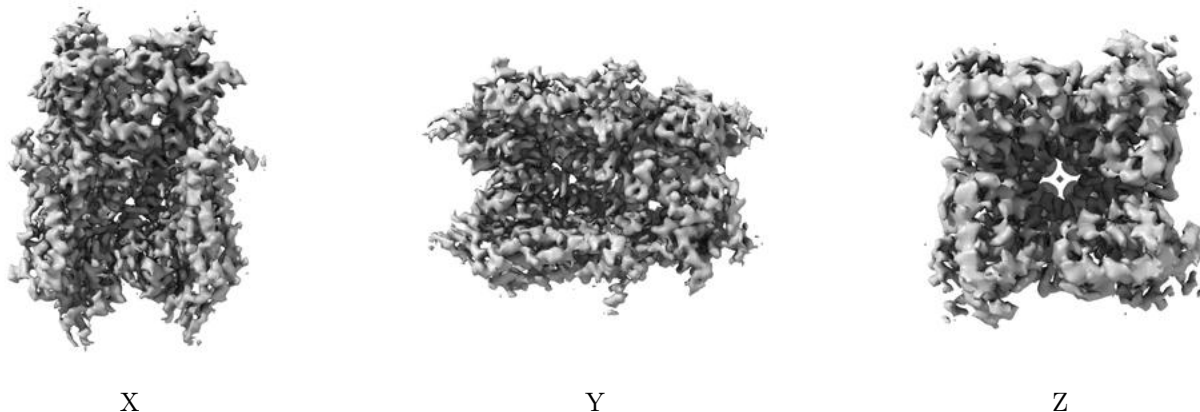


Z

The images above show the map standard deviation projections with false color in three orthogonal directions. Minimum values are shown in green, max in blue, and dark to light orange shades represent small to large values respectively.

## 6.5 Orthogonal surface views [i](#)

### 6.5.1 Primary map



The images above show the 3D surface view of the map at the recommended contour level 0.0426. These images, in conjunction with the slice images, may facilitate assessment of whether an appropriate contour level has been provided.

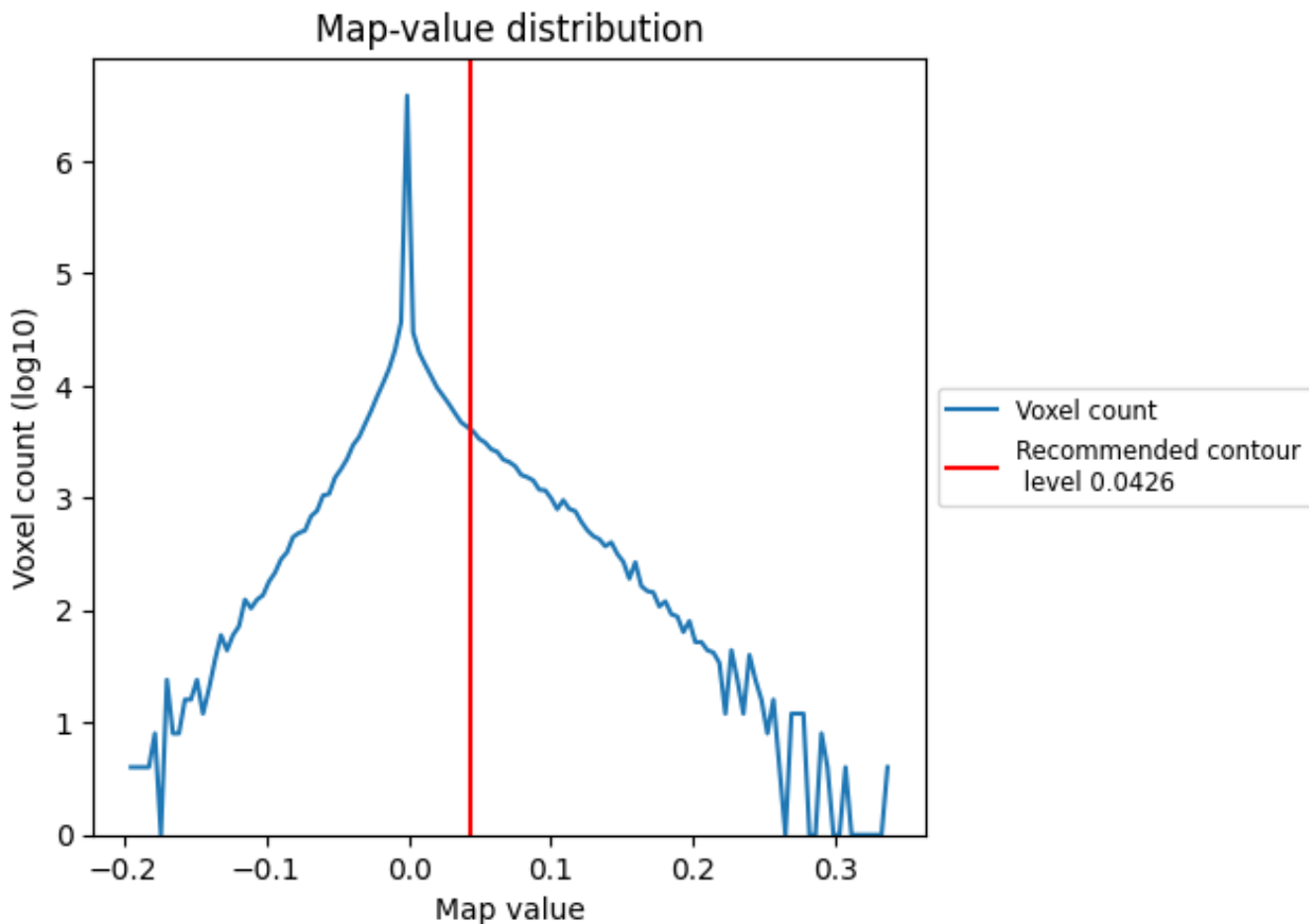
## 6.6 Mask visualisation [i](#)

This section was not generated. No masks/segmentation were deposited.

## 7 Map analysis [i](#)

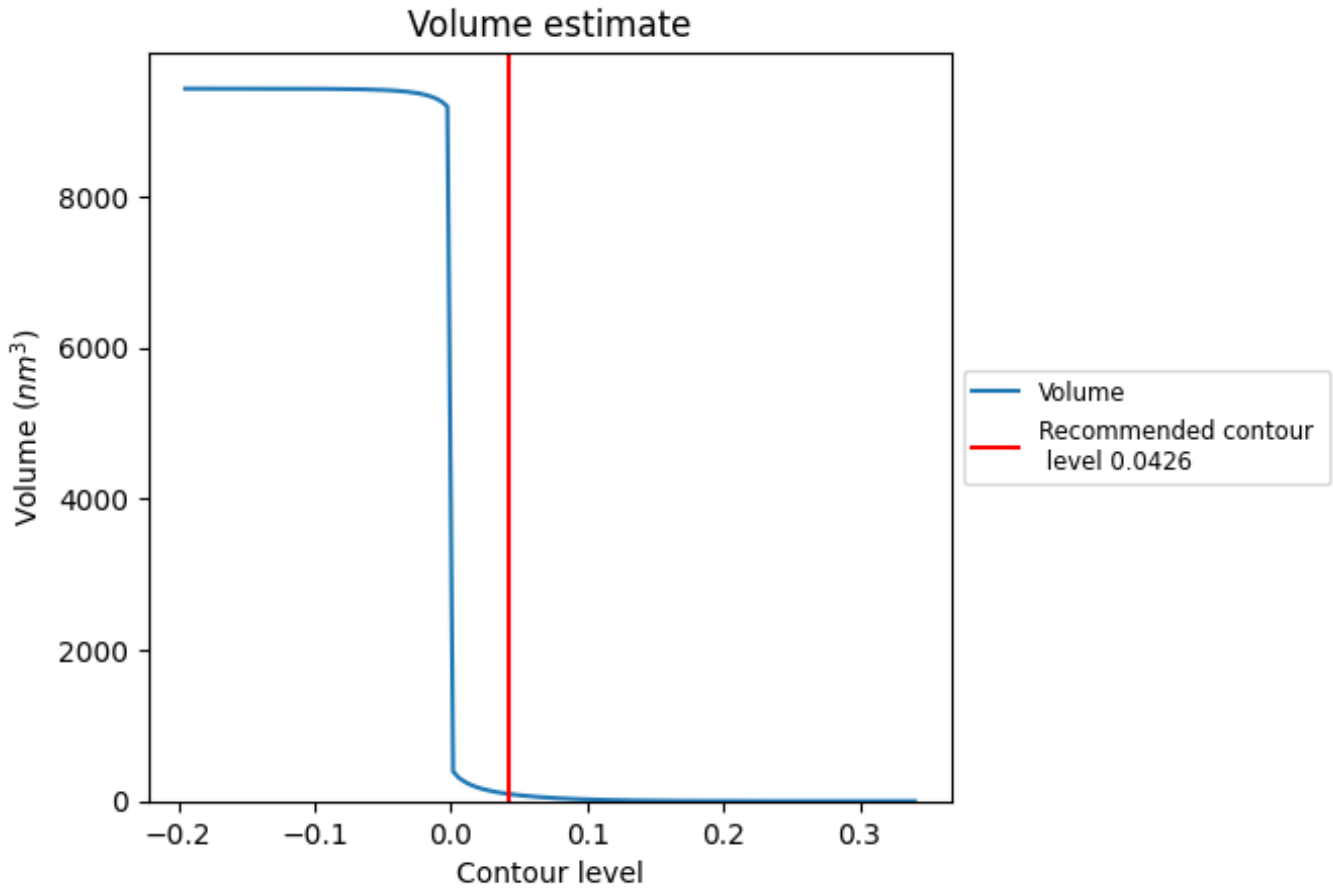
This section contains the results of statistical analysis of the map.

### 7.1 Map-value distribution [i](#)



The map-value distribution is plotted in 128 intervals along the x-axis. The y-axis is logarithmic. A spike in this graph at zero usually indicates that the volume has been masked.

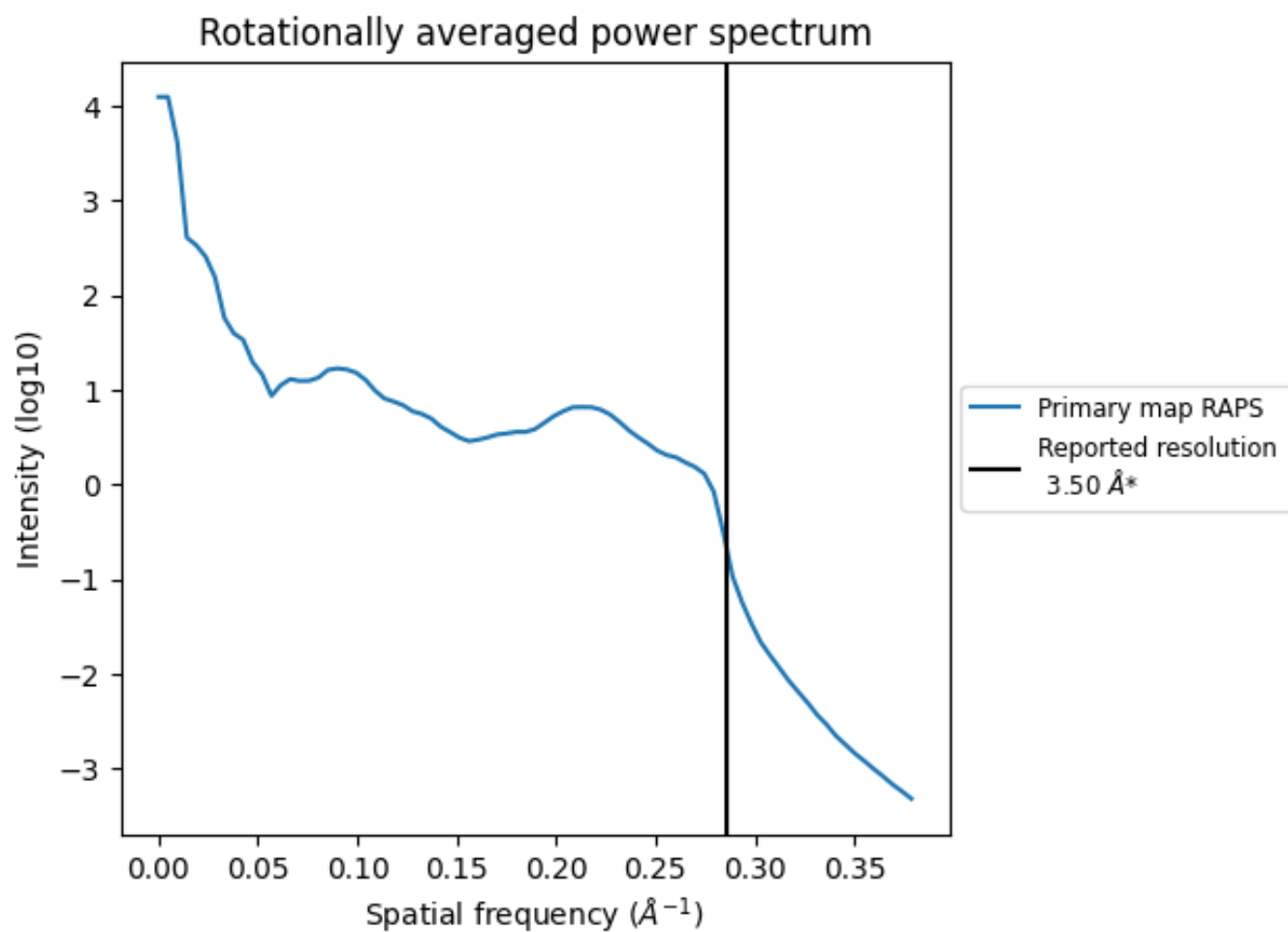
## 7.2 Volume estimate [i](#)



The volume at the recommended contour level is 95 nm<sup>3</sup>; this corresponds to an approximate mass of 86 kDa.

The volume estimate graph shows how the enclosed volume varies with the contour level. The recommended contour level is shown as a vertical line and the intersection between the line and the curve gives the volume of the enclosed surface at the given level.

### 7.3 Rotationally averaged power spectrum [\(i\)](#)



\*Reported resolution corresponds to spatial frequency of  $0.286 \text{ \AA}^{-1}$

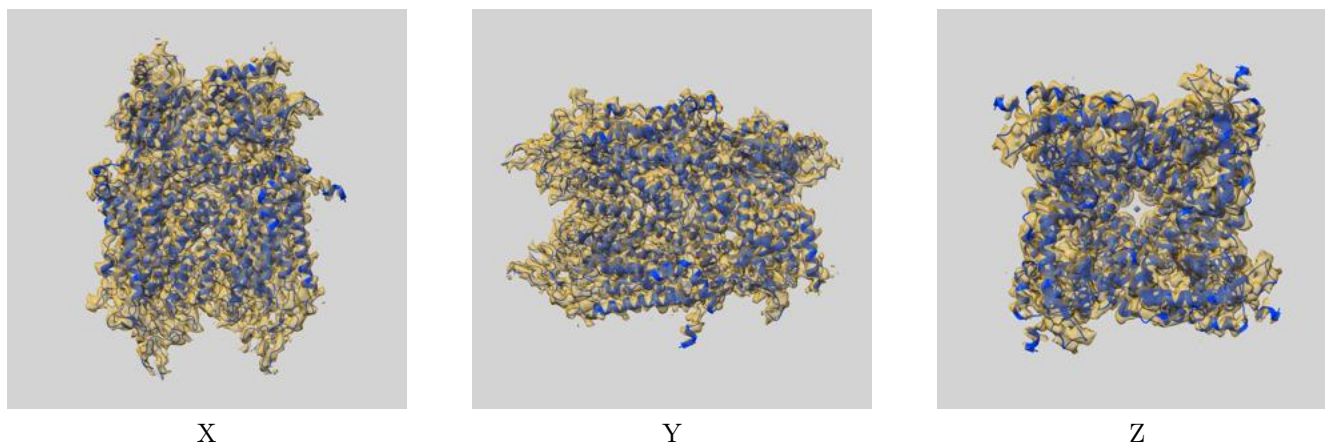
## 8 Fourier-Shell correlation

This section was not generated. No FSC curve or half-maps provided.

## 9 Map-model fit [i](#)

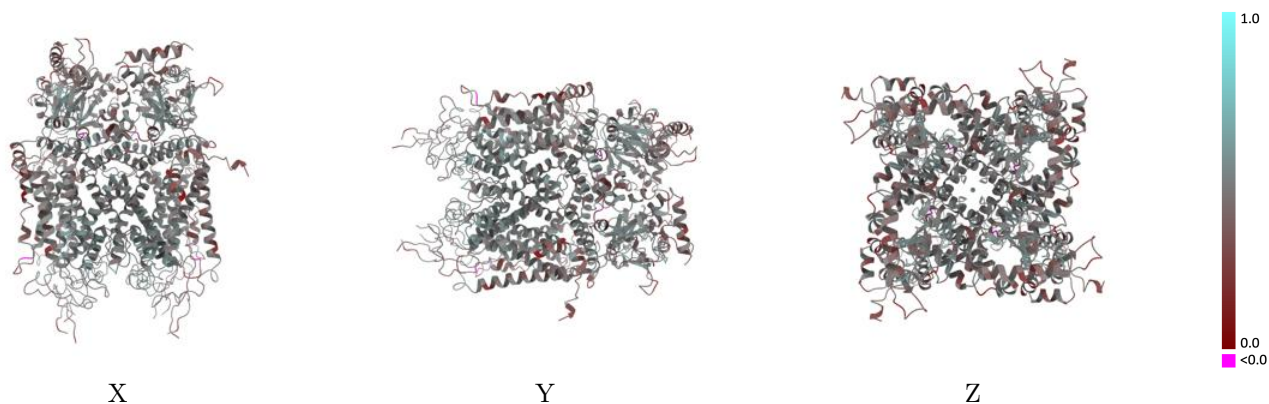
This section contains information regarding the fit between EMDB map EMD-6656 and PDB model 5H3O. Per-residue inclusion information can be found in section 3 on page 5.

### 9.1 Map-model overlay [i](#)



The images above show the 3D surface view of the map at the recommended contour level 0.0426 at 50% transparency in yellow overlaid with a ribbon representation of the model coloured in blue. These images allow for the visual assessment of the quality of fit between the atomic model and the map.

## 9.2 Q-score mapped to coordinate model [i](#)

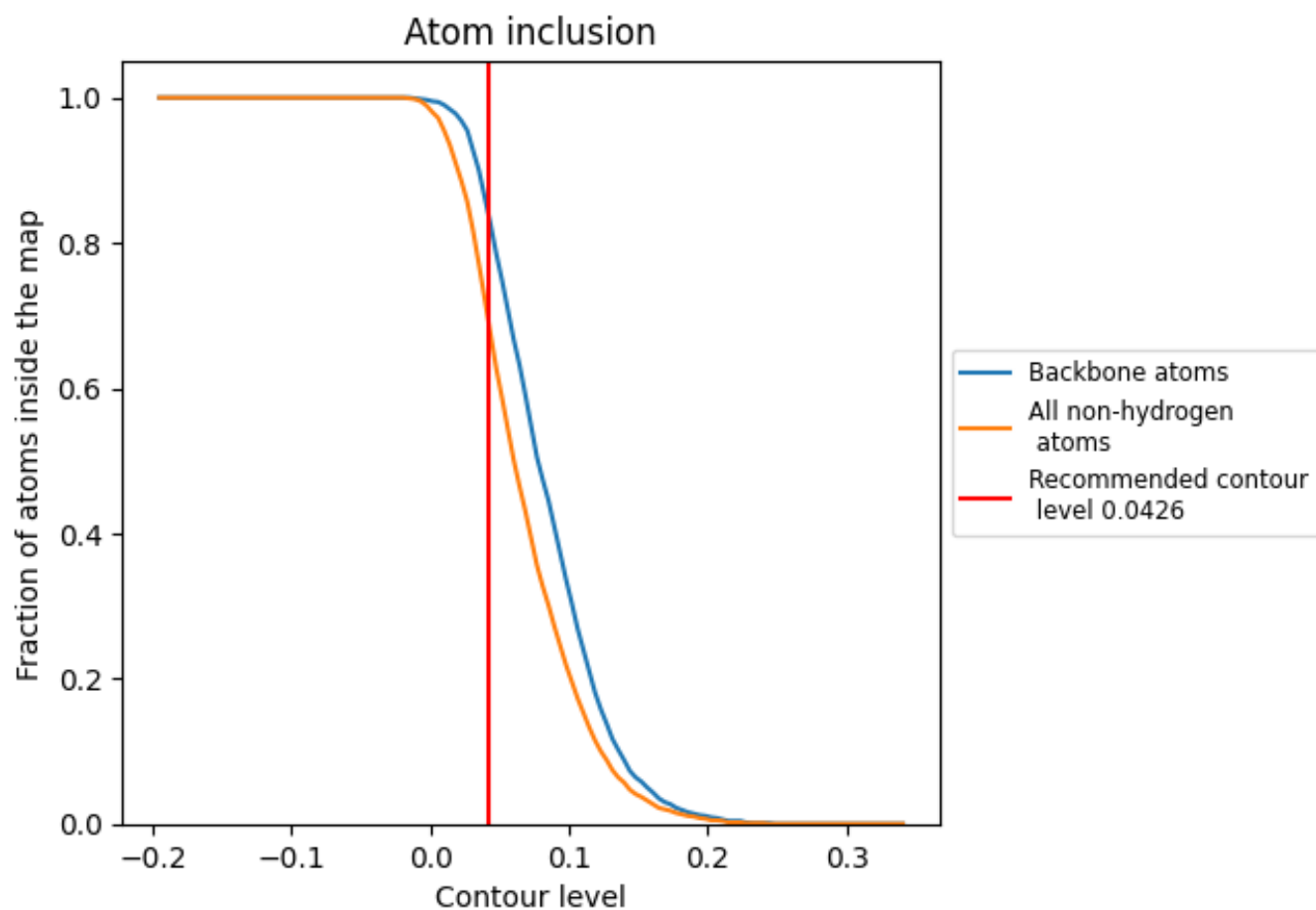


The images above show the model with each residue coloured according to its Q-score. This shows their resolvability in the map with higher Q-score values reflecting better resolvability. Please note: Q-score is calculating the resolvability of atoms, and thus high values are only expected at resolutions at which atoms can be resolved. Low Q-score values may therefore be expected for many entries.

## 9.3 Atom inclusion mapped to coordinate model [i](#)

This section was not generated.











## 9.4 Atom inclusion [i](#)



At the recommended contour level, 83% of all backbone atoms, 68% of all non-hydrogen atoms, are inside the map.

## 9.5 Map-model fit summary [i](#)

The table lists the average atom inclusion at the recommended contour level (0.0426) and Q-score for the entire model and for each chain.

Chain	Atom inclusion	Q-score
All	 0.6840	 0.4560
A	 0.6860	 0.4570
B	 0.6840	 0.4560
C	 0.6820	 0.4560
D	 0.6820	 0.4560

