



Full wwPDB X-ray Structure Validation Report ⓘ

Mar 2, 2026 – 01:05 AM UTC

PDB ID : 5JKG / pdb_00005jkg
Title : The crystal structure of FGFR4 kinase domain in complex with LY2874455
Authors : Wu, D.; Chen, L.; Chen, Y.
Deposited on : 2016-04-26
Resolution : 2.35 Å(reported)

This is a Full wwPDB X-ray Structure Validation Report for a publicly released PDB entry.

We welcome your comments at validation@mail.wwpdb.org

A user guide is available at

<https://www.wwpdb.org/validation/2017/XrayValidationReportHelp>

with specific help available everywhere you see the ⓘ symbol.

The types of validation reports are described at

<http://www.wwpdb.org/validation/2017/FAQs#types>.

The following versions of software and data (see [references ⓘ](#)) were used in the production of this report:

MolProbity : 4-5-2 with Phenix2.0
Mogul : 2022.3.0, CSD as543be (2022)
Xtrriage (Phenix) : 2.0
EDS : 3.0
Buster-report : wwPDB partial adaption of 1.1.7 (2018)
Percentile statistics : 20250101.v01 (using entries in the PDB archive January 1st 2025)
CCP4 : 9.0.010 (Gargrove)
Density-Fitness : 1.0.12
Ideal geometry (proteins) : Engh & Huber (2001)
Ideal geometry (DNA, RNA) : Parkinson et al. (1996)
Validation Pipeline (wwPDB-VP) : 2.49

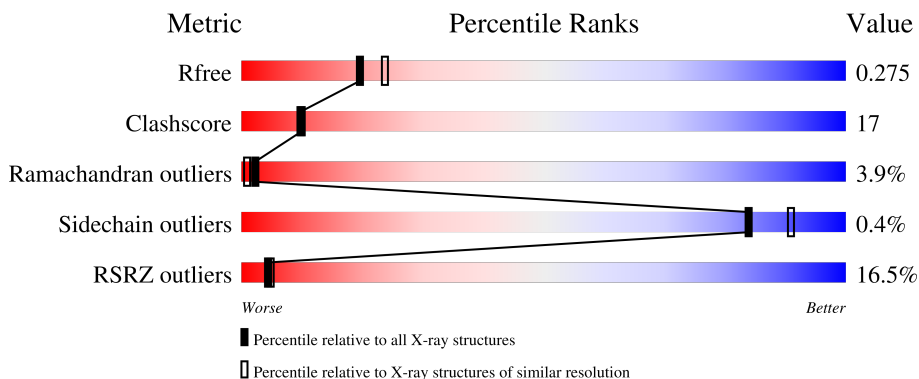
1 Overall quality at a glance

The following experimental techniques were used to determine the structure:

X-RAY DIFFRACTION

The reported resolution of this entry is 2.35 Å.

Percentile scores (ranging between 0-100) for global validation metrics of the entry are shown in the following graphic. The table shows the number of entries on which the scores are based.



Metric	Whole archive (#Entries)	Similar resolution (#Entries, resolution range(Å))
R_{free}	180053	1596 (2.36-2.36)
Clashscore	190562	1663 (2.36-2.36)
Ramachandran outliers	187476	1646 (2.36-2.36)
Sidechain outliers	187428	1646 (2.36-2.36)
RSRZ outliers	180081	1598 (2.36-2.36)

The table below summarises the geometric issues observed across the polymeric chains and their fit to the electron density. The red, orange, yellow and green segments of the lower bar indicate the fraction of residues that contain outliers for ≥ 3 , 2, 1 and 0 types of geometric quality criteria respectively. A grey segment represents the fraction of residues that are not modelled. The numeric value for each fraction is indicated below the corresponding segment, with a dot representing fractions $\leq 5\%$. The upper red bar (where present) indicates the fraction of residues that have poor fit to the electron density. The numeric value is given above the bar.

Mol	Chain	Length	Quality of chain
1	A	311	

2 Entry composition [i](#)

There are 3 unique types of molecules in this entry. The entry contains 2171 atoms, of which 0 are hydrogens and 0 are deuteriums.

In the tables below, the ZeroOcc column contains the number of atoms modelled with zero occupancy, the AltConf column contains the number of residues with at least one atom in alternate conformation and the Trace column contains the number of residues modelled with at most 2 atoms.

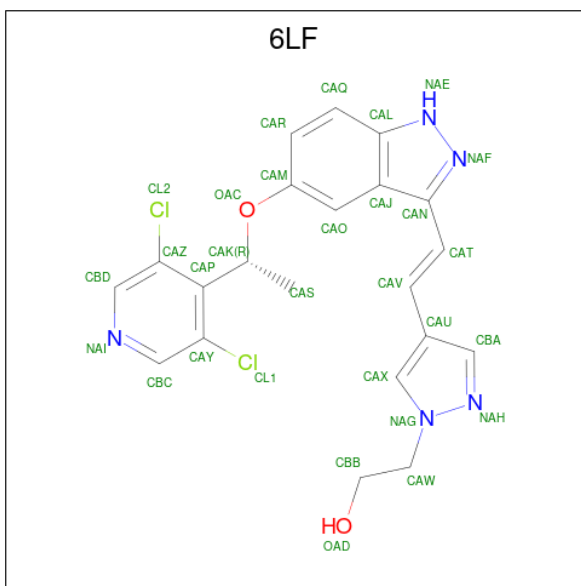
- Molecule 1 is a protein called Fibroblast growth factor receptor 4.

Mol	Chain	Residues	Atoms					ZeroOcc	AltConf	Trace
			Total	C	N	O	S			
1	A	266	2103	1354	365	369	15	0	0	0

There are 3 discrepancies between the modelled and reference sequences:

Chain	Residue	Modelled	Actual	Comment	Reference
A	443	GLY	-	expression tag	UNP P22455
A	444	PRO	-	expression tag	UNP P22455
A	477	ALA	CYS	conflict	UNP P22455

- Molecule 2 is 2-[4-[E-2-[5-[(1R)-1-[3,5-bis(chloranyl)pyridin-4-yl]ethoxy]-1H-indazol-3-yl]ethenyl]pyrazol-1-yl]ethanol (CCD ID: 6LF) (formula: C₂₁H₁₉Cl₂N₅O₂).



Mol	Chain	Residues	Atoms					ZeroOcc	AltConf
			Total	C	Cl	N	O		
2	A	1	30	21	2	5	2	0	0

- Molecule 3 is water.

Mol	Chain	Residues	Atoms		ZeroOcc	AltConf
3	A	38	Total 38	O 38	0	0

4 Data and refinement statistics

Property	Value	Source
Space group	P 43 21 2	Depositor
Cell constants a, b, c, α , β , γ	61.89Å 61.89Å 186.06Å 90.00° 90.00° 90.00°	Depositor
Resolution (Å)	31.89 – 2.35 31.89 – 2.35	Depositor EDS
% Data completeness (in resolution range)	96.9 (31.89-2.35) 95.7 (31.89-2.35)	Depositor EDS
R_{merge}	0.08	Depositor
R_{sym}	(Not available)	Depositor
$\langle I/\sigma(I) \rangle$ ¹	8.88 (at 2.36Å)	Xtrriage
Refinement program	PHENIX (1.10_2155: ???)	Depositor
R, R_{free}	0.233 , 0.277 0.238 , 0.275	Depositor DCC
R_{free} test set	1570 reflections (9.91%)	wwPDB-VP
Wilson B-factor (Å ²)	49.4	Xtrriage
Anisotropy	0.378	Xtrriage
Bulk solvent k_{sol} (e/Å ³), B_{sol} (Å ²)	0.34 , 57.1	EDS
L-test for twinning ²	$\langle L \rangle = 0.49$, $\langle L^2 \rangle = 0.33$	Xtrriage
Estimated twinning fraction	No twinning to report.	Xtrriage
F_o, F_c correlation	0.93	EDS
Total number of atoms	2171	wwPDB-VP
Average B, all atoms (Å ²)	66.0	wwPDB-VP

Xtrriage's analysis on translational NCS is as follows: *The largest off-origin peak in the Patterson function is 4.01% of the height of the origin peak. No significant pseudotranslation is detected.*

¹Intensities estimated from amplitudes.

²Theoretical values of $\langle |L| \rangle$, $\langle L^2 \rangle$ for acentric reflections are 0.5, 0.333 respectively for untwinned datasets, and 0.375, 0.2 for perfectly twinned datasets.

5 Model quality [i](#)

5.1 Standard geometry [i](#)

Bond lengths and bond angles in the following residue types are not validated in this section: 6LF

The Z score for a bond length (or angle) is the number of standard deviations the observed value is removed from the expected value. A bond length (or angle) with $|Z| > 5$ is considered an outlier worth inspection. RMSZ is the root-mean-square of all Z scores of the bond lengths (or angles).

Mol	Chain	Bond lengths		Bond angles	
		RMSZ	# Z >5	RMSZ	# Z >5
1	A	0.42	0/2155	0.65	0/2922

Chiral center outliers are detected by calculating the chiral volume of a chiral center and verifying if the center is modelled as a planar moiety or with the opposite hand. A planarity outlier is detected by checking planarity of atoms in a peptide group, atoms in a mainchain group or atoms of a sidechain that are expected to be planar.

Mol	Chain	#Chirality outliers	#Planarity outliers
1	A	0	1

There are no bond length outliers.

There are no bond angle outliers.

There are no chirality outliers.

All (1) planarity outliers are listed below:

Mol	Chain	Res	Type	Group
1	A	454	LEU	Peptide

5.2 Too-close contacts [i](#)

In the following table, the Non-H and H(model) columns list the number of non-hydrogen atoms and hydrogen atoms in the chain respectively. The H(added) column lists the number of hydrogen atoms added and optimized by MolProbity. The Clashes column lists the number of clashes within the asymmetric unit, whereas Symm-Clashes lists symmetry-related clashes.

Mol	Chain	Non-H	H(model)	H(added)	Clashes	Symm-Clashes
1	A	2103	0	2125	74	0
2	A	30	0	0	2	0

Continued on next page...

Continued from previous page...

Mol	Chain	Non-H	H(model)	H(added)	Clashes	Symm-Clashes
3	A	38	0	0	4	0
All	All	2171	0	2125	74	0

The all-atom clashscore is defined as the number of clashes found per 1000 atoms (including hydrogen atoms). The all-atom clashscore for this structure is 17.

All (74) close contacts within the same asymmetric unit are listed below, sorted by their clash magnitude.

Atom-1	Atom-2	Interatomic distance (Å)	Clash overlap (Å)
1:A:474:GLY:O	1:A:475:GLU:O	1.62	1.17
1:A:478:PHE:HZ	1:A:503:LYS:HE2	1.29	0.96
1:A:476:GLY:O	1:A:478:PHE:N	2.01	0.92
1:A:478:PHE:HZ	1:A:503:LYS:CE	1.87	0.87
1:A:474:GLY:C	1:A:475:GLU:O	2.10	0.86
1:A:478:PHE:CZ	1:A:503:LYS:HE2	2.12	0.84
1:A:542:GLN:HG2	1:A:543:GLU:HG2	1.57	0.84
1:A:527:ILE:HD12	1:A:631:PHE:CE1	2.15	0.80
1:A:478:PHE:CZ	1:A:503:LYS:CE	2.68	0.77
1:A:478:PHE:CZ	1:A:503:LYS:NZ	2.54	0.76
1:A:690:TYR:H	1:A:708:MET:HE3	1.49	0.76
1:A:595:GLN:HE22	1:A:625:VAL:HA	1.51	0.75
1:A:594:TYR:OH	1:A:598:ARG:NH1	2.22	0.73
1:A:540:CYS:HB2	1:A:547:TYR:HB2	1.74	0.70
1:A:616:ARG:NH1	3:A:903:HOH:O	2.23	0.69
1:A:475:GLU:HB3	1:A:476:GLY:HA2	1.73	0.69
1:A:609:ILE:HG21	1:A:611:ARG:NH1	2.09	0.68
1:A:493:ARG:HD2	1:A:496:GLN:HB2	1.76	0.67
1:A:737:LYS:O	1:A:741:GLU:HG3	1.96	0.65
1:A:611:ARG:HH21	1:A:666:TYR:HB2	1.60	0.65
1:A:611:ARG:HG3	1:A:666:TYR:CD1	2.32	0.63
1:A:697:GLU:N	1:A:697:GLU:OE2	2.32	0.63
1:A:609:ILE:O	1:A:631:PHE:O	2.17	0.62
1:A:748:LEU:O	1:A:750:VAL:N	2.35	0.59
1:A:475:GLU:CB	1:A:476:GLY:HA2	2.33	0.59
1:A:478:PHE:HZ	1:A:503:LYS:NZ	1.94	0.57
1:A:454:LEU:HB2	1:A:455:PRO:HD3	1.86	0.57
1:A:693:ILE:HG23	1:A:697:GLU:OE1	2.04	0.56
1:A:737:LYS:HD2	1:A:737:LYS:H	1.69	0.56
1:A:680:TRP:CE2	1:A:708:MET:HE2	2.41	0.56
1:A:595:GLN:NE2	1:A:626:MET:H	2.04	0.55
1:A:470:GLY:HA3	3:A:902:HOH:O	2.05	0.55

Continued on next page...

Continued from previous page...

Atom-1	Atom-2	Interatomic distance (Å)	Clash overlap (Å)
1:A:478:PHE:C	1:A:478:PHE:CD1	2.85	0.55
1:A:527:ILE:HD11	1:A:608:CYS:SG	2.46	0.55
1:A:475:GLU:CB	1:A:476:GLY:CA	2.84	0.55
1:A:662:PHE:CD1	1:A:699:PHE:HE2	2.26	0.54
1:A:653:VAL:N	3:A:906:HOH:O	2.41	0.53
1:A:475:GLU:HB2	2:A:801:6LF:CAS	2.40	0.52
1:A:557:ASN:HB3	2:A:801:6LF:NAI	2.25	0.52
1:A:478:PHE:C	1:A:478:PHE:HD1	2.18	0.52
1:A:518:VAL:O	1:A:522:GLU:HG2	2.09	0.51
1:A:504:MET:HE3	1:A:547:TYR:HE1	1.75	0.51
1:A:473:LEU:HD12	1:A:481:VAL:HG12	1.92	0.51
1:A:555:LYS:NZ	1:A:624:ASN:HD21	2.09	0.51
1:A:683:PHE:CZ	1:A:718:LEU:HD13	2.46	0.50
1:A:706:HIS:C	1:A:707:ARG:HG2	2.36	0.50
1:A:749:ALA:O	3:A:901:HOH:O	2.19	0.50
1:A:653:VAL:HG13	1:A:661:LEU:HD11	1.94	0.50
1:A:524:MET:HE2	1:A:536:LEU:HB2	1.93	0.49
1:A:629:ALA:O	1:A:630:ASP:O	2.30	0.49
1:A:555:LYS:HZ2	1:A:624:ASN:HD21	1.59	0.48
1:A:689:PRO:HA	1:A:708:MET:HE1	1.97	0.47
1:A:609:ILE:HG21	1:A:611:ARG:HH11	1.79	0.46
1:A:478:PHE:CD1	1:A:479:GLY:N	2.84	0.46
1:A:495:ASP:N	1:A:495:ASP:OD1	2.49	0.45
1:A:527:ILE:HD12	1:A:631:PHE:CD1	2.50	0.45
1:A:611:ARG:HG3	1:A:666:TYR:CE1	2.51	0.45
1:A:680:TRP:CZ2	1:A:684:THR:HG21	2.52	0.45
1:A:476:GLY:C	1:A:478:PHE:N	2.73	0.44
1:A:609:ILE:HD12	1:A:668:HIS:ND1	2.33	0.43
1:A:609:ILE:CG2	1:A:611:ARG:HH11	2.32	0.43
1:A:478:PHE:HD1	1:A:479:GLY:N	2.16	0.43
1:A:651:LEU:HB3	1:A:652:PRO:HD3	2.00	0.43
1:A:464:ARG:HH12	1:A:545:PRO:HG2	1.84	0.42
1:A:479:GLY:HA3	1:A:504:MET:O	2.19	0.42
1:A:715:PRO:HD2	1:A:718:LEU:HD12	2.02	0.42
1:A:611:ARG:NH2	1:A:666:TYR:HB2	2.30	0.42
1:A:504:MET:HE3	1:A:547:TYR:CE1	2.56	0.41
1:A:512:LYS:H	1:A:512:LYS:HG3	1.73	0.41
1:A:530:HIS:HE1	1:A:532:ASN:HD22	1.68	0.41
1:A:736:PHE:O	1:A:740:VAL:HG23	2.21	0.41
1:A:516:ASP:OD1	1:A:516:ASP:N	2.54	0.41
1:A:553:ALA:CB	1:A:619:LEU:HB3	2.51	0.41

Continued on next page...

Continued from previous page...

Atom-1	Atom-2	Interatomic distance (Å)	Clash overlap (Å)
1:A:557:ASN:HA	1:A:619:LEU:HD23	2.02	0.40

There are no symmetry-related clashes.

5.3 Torsion angles [i](#)

5.3.1 Protein backbone [i](#)

In the following table, the Percentiles column shows the percent Ramachandran outliers of the chain as a percentile score with respect to all X-ray entries followed by that with respect to entries of similar resolution.

The Analysed column shows the number of residues for which the backbone conformation was analysed, and the total number of residues.

Mol	Chain	Analysed	Favoured	Allowed	Outliers	Percentiles
1	A	258/311 (83%)	237 (92%)	11 (4%)	10 (4%)	2 1

All (10) Ramachandran outliers are listed below:

Mol	Chain	Res	Type
1	A	454	LEU
1	A	475	GLU
1	A	477	ALA
1	A	496	GLN
1	A	630	ASP
1	A	749	ALA
1	A	632	GLY
1	A	697	GLU
1	A	613	LEU
1	A	695	VAL

5.3.2 Protein sidechains [i](#)

In the following table, the Percentiles column shows the percent sidechain outliers of the chain as a percentile score with respect to all X-ray entries followed by that with respect to entries of similar resolution.

The Analysed column shows the number of residues for which the sidechain conformation was analysed, and the total number of residues.

Mol	Chain	Analysed	Rotameric	Outliers	Percentiles
1	A	227/263 (86%)	226 (100%)	1 (0%)	84 91

All (1) residues with a non-rotameric sidechain are listed below:

Mol	Chain	Res	Type
1	A	478	PHE

Sometimes sidechains can be flipped to improve hydrogen bonding and reduce clashes. All (3) such sidechains are listed below:

Mol	Chain	Res	Type
1	A	532	ASN
1	A	595	GLN
1	A	624	ASN

5.3.3 RNA [i](#)

There are no RNA molecules in this entry.

5.4 Non-standard residues in protein, DNA, RNA chains [i](#)

There are no non-standard protein/DNA/RNA residues in this entry.

5.5 Carbohydrates [i](#)

There are no oligosaccharides in this entry.

5.6 Ligand geometry [i](#)

1 ligand is modelled in this entry.

In the following table, the Counts columns list the number of bonds (or angles) for which Mogul statistics could be retrieved, the number of bonds (or angles) that are observed in the model and the number of bonds (or angles) that are defined in the Chemical Component Dictionary. The Link column lists molecule types, if any, to which the group is linked. The Z score for a bond length (or angle) is the number of standard deviations the observed value is removed from the expected value. A bond length (or angle) with $|Z| > 2$ is considered an outlier worth inspection. RMSZ is the root-mean-square of all Z scores of the bond lengths (or angles).

Mol	Type	Chain	Res	Link	Bond lengths			Bond angles		
					Counts	RMSZ	# Z > 2	Counts	RMSZ	# Z > 2
2	6LF	A	801	-	33,33,33	2.56	12 (36%)	40,46,46	2.61	12 (30%)

In the following table, the Chirals column lists the number of chiral outliers, the number of chiral centers analysed, the number of these observed in the model and the number defined in the Chemical Component Dictionary. Similar counts are reported in the Torsion and Rings columns. '-' means no outliers of that kind were identified.

Mol	Type	Chain	Res	Link	Chirals	Torsions	Rings
2	6LF	A	801	-	-	2/16/16/16	0/4/4/4

All (12) bond length outliers are listed below:

Mol	Chain	Res	Type	Atoms	Z	Observed(Å)	Ideal(Å)
2	A	801	6LF	CAT-CAN	6.90	1.56	1.46
2	A	801	6LF	CAV-CAT	6.33	1.51	1.33
2	A	801	6LF	OAC-CAK	-4.98	1.40	1.45
2	A	801	6LF	OAD-CBB	-4.12	1.21	1.42
2	A	801	6LF	OAC-CAM	3.71	1.45	1.38
2	A	801	6LF	CAY-CAP	3.20	1.44	1.39
2	A	801	6LF	CAR-CAM	3.15	1.44	1.38
2	A	801	6LF	CAV-CAU	3.01	1.52	1.45
2	A	801	6LF	NAG-NAH	-2.88	1.30	1.36
2	A	801	6LF	CAO-CAJ	2.71	1.44	1.39
2	A	801	6LF	NAE-NAF	-2.29	1.31	1.36
2	A	801	6LF	CAR-CAQ	2.23	1.42	1.38

All (12) bond angle outliers are listed below:

Mol	Chain	Res	Type	Atoms	Z	Observed(°)	Ideal(°)
2	A	801	6LF	CAT-CAV-CAU	-9.35	111.76	126.09
2	A	801	6LF	CAN-NAF-NAE	5.70	110.38	106.50
2	A	801	6LF	CBA-NAH-NAG	4.89	112.15	104.68
2	A	801	6LF	CAJ-CAN-NAF	-4.88	106.93	110.39
2	A	801	6LF	CAS-CAK-CAP	-4.02	107.35	113.20
2	A	801	6LF	CAZ-CBD-NAI	-3.96	119.28	122.80
2	A	801	6LF	CAV-CAT-CAN	-3.89	113.95	129.43
2	A	801	6LF	CBD-NAI-CBC	3.64	122.45	117.51
2	A	801	6LF	CAU-CBA-NAH	-2.80	105.81	112.01
2	A	801	6LF	CAT-CAN-NAF	2.13	123.37	119.62
2	A	801	6LF	CAP-CAZ-CL2	-2.11	118.03	120.54
2	A	801	6LF	OAD-CBB-CAW	2.07	119.78	111.22

There are no chirality outliers.

All (2) torsion outliers are listed below:

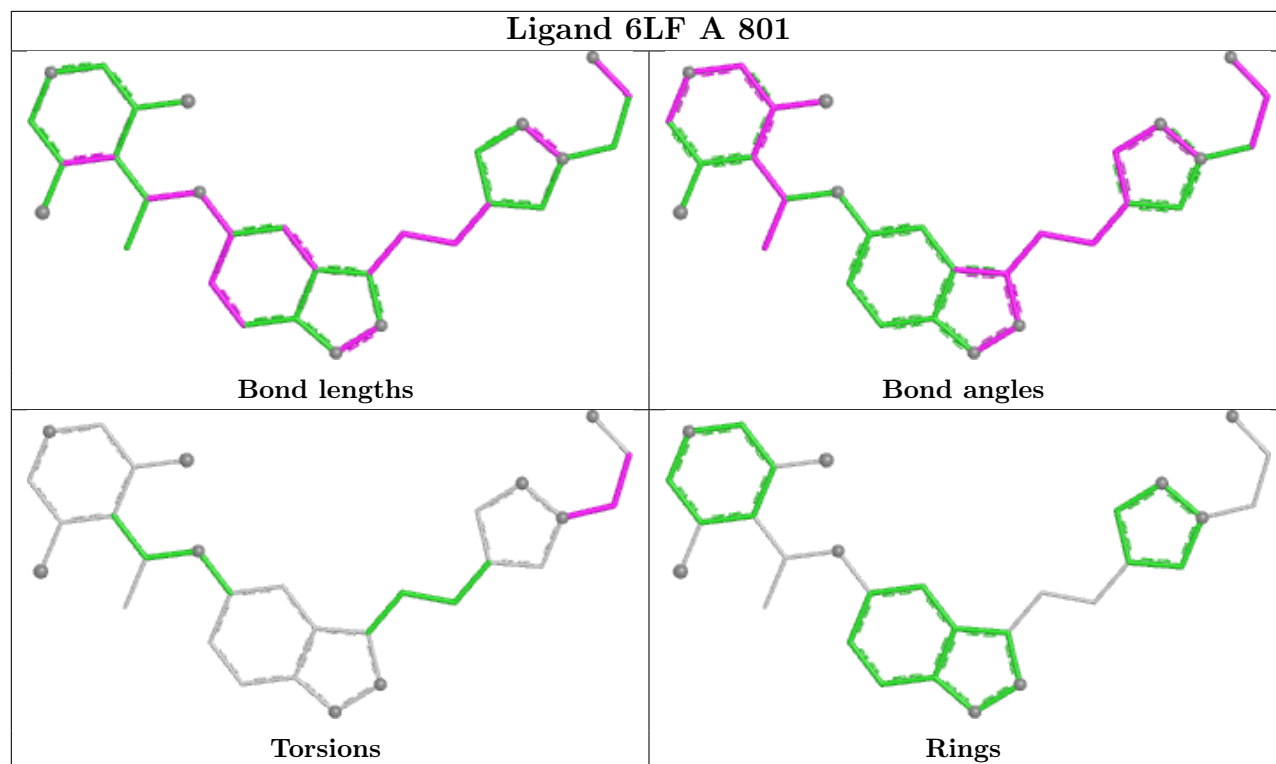
Mol	Chain	Res	Type	Atoms
2	A	801	6LF	NAG-CAW-CBB-OAD
2	A	801	6LF	CBB-CAW-NAG-NAH

There are no ring outliers.

1 monomer is involved in 2 short contacts:

Mol	Chain	Res	Type	Clashes	Symm-Clashes
2	A	801	6LF	2	0

The following is a two-dimensional graphical depiction of Mogul quality analysis of bond lengths, bond angles, torsion angles, and ring geometry for all instances of the Ligand of Interest. In addition, ligands with molecular weight > 250 and outliers as shown on the validation Tables will also be included. For torsion angles, if less than 5% of the Mogul distribution of torsion angles is within 10 degrees of the torsion angle in question, then that torsion angle is considered an outlier. Any bond that is central to one or more torsion angles identified as an outlier by Mogul will be highlighted in the graph. For rings, the root-mean-square deviation (RMSD) between the ring in question and similar rings identified by Mogul is calculated over all ring torsion angles. If the average RMSD is greater than 60 degrees and the minimal RMSD between the ring in question and any Mogul-identified rings is also greater than 60 degrees, then that ring is considered an outlier. The outliers are highlighted in purple. The color gray indicates Mogul did not find sufficient equivalents in the CSD to analyse the geometry.



5.7 Other polymers [i](#)

There are no such residues in this entry.

5.8 Polymer linkage issues [i](#)

There are no chain breaks in this entry.

6 Fit of model and data

6.1 Protein, DNA and RNA chains

In the following table, the column labelled ‘#RSRZ> 2’ contains the number (and percentage) of RSRZ outliers, followed by percent RSRZ outliers for the chain as percentile scores relative to all X-ray entries and entries of similar resolution. The OWAB column contains the minimum, median, 95th percentile and maximum values of the occupancy-weighted average B-factor per residue. The column labelled ‘Q< 0.9’ lists the number of (and percentage) of residues with an average occupancy less than 0.9.

Mol	Chain	Analysed	<RSRZ>	#RSRZ>2	OWAB(Å ²)	Q<0.9
1	A	266/311 (85%)	0.84	44 (16%) 4 5	30, 62, 118, 148	0

All (44) RSRZ outliers are listed below:

Mol	Chain	Res	Type	RSRZ
1	A	454	LEU	7.7
1	A	750	VAL	5.2
1	A	632	GLY	4.5
1	A	564	ALA	4.5
1	A	570	PRO	4.3
1	A	695	VAL	4.2
1	A	692	GLY	4.2
1	A	651	LEU	3.7
1	A	478	PHE	3.7
1	A	749	ALA	3.6
1	A	476	GLY	3.5
1	A	633	LEU	3.4
1	A	487	PHE	3.2
1	A	697	GLU	3.2
1	A	611	ARG	3.1
1	A	527	ILE	3.0
1	A	455	PRO	3.0
1	A	477	ALA	3.0
1	A	456	LEU	3.0
1	A	491	PRO	2.9
1	A	699	PHE	2.9
1	A	514	LEU	2.9
1	A	497	ALA	2.8
1	A	631	PHE	2.7
1	A	622	GLU	2.7
1	A	609	ILE	2.6
1	A	486	ALA	2.6

Continued on next page...

Continued from previous page...

Mol	Chain	Res	Type	RSRZ
1	A	494	PRO	2.5
1	A	661	LEU	2.4
1	A	612	ASP	2.4
1	A	560	GLU	2.4
1	A	492	ALA	2.4
1	A	466	ARG	2.4
1	A	542	GLN	2.3
1	A	693	ILE	2.2
1	A	569	GLY	2.2
1	A	610	HIS	2.2
1	A	511	ASP	2.2
1	A	583	PRO	2.1
1	A	694	PRO	2.1
1	A	480	GLN	2.1
1	A	506	LYS	2.1
1	A	459	LEU	2.1
1	A	507	ASP	2.1

6.2 Non-standard residues in protein, DNA, RNA chains [i](#)

There are no non-standard protein/DNA/RNA residues in this entry.

6.3 Carbohydrates [i](#)

There are no oligosaccharides in this entry.

6.4 Ligands [i](#)

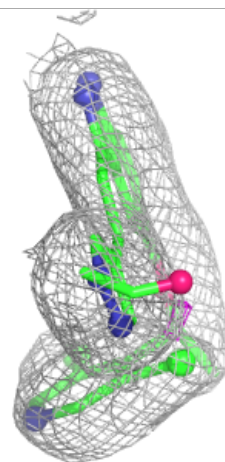
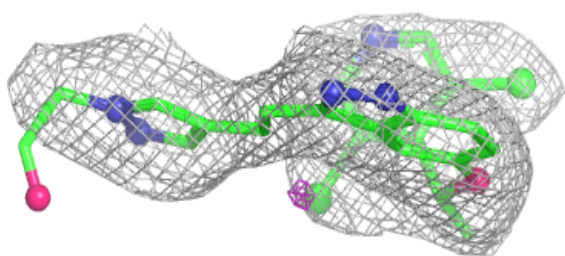
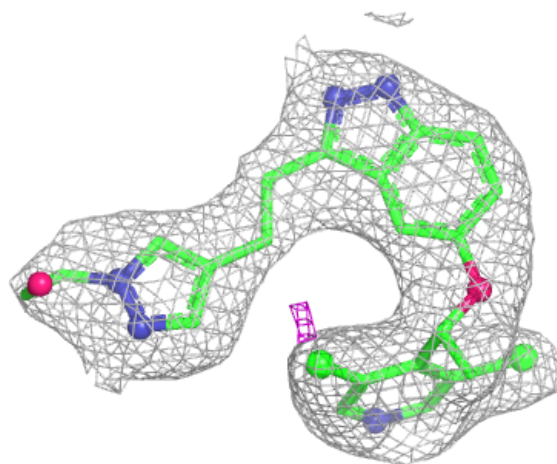
In the following table, the Atoms column lists the number of modelled atoms in the group and the number defined in the chemical component dictionary. The B-factors column lists the minimum, median, 95th percentile and maximum values of B factors of atoms in the group. The column labelled 'Q< 0.9' lists the number of atoms with occupancy less than 0.9.

Mol	Type	Chain	Res	Atoms	RSCC	RSR	B-factors(Å ²)	Q<0.9
2	6LF	A	801	30/30	0.89	0.10	44,60,90,95	0

The following is a graphical depiction of the model fit to experimental electron density of all instances of the Ligand of Interest. In addition, ligands with molecular weight > 250 and outliers as shown on the geometry validation Tables will also be included. Each fit is shown from different orientation to approximate a three-dimensional view.

Electron density around 6LF A 801:

$2mF_o-DF_c$ (at 0.7 rmsd) in gray
 mF_o-DF_c (at 3 rmsd) in purple (negative)
and green (positive)



6.5 Other polymers [i](#)

There are no such residues in this entry.