



Full wwPDB X-ray Structure Validation Report ⓘ

Mar 8, 2026 – 07:08 AM UTC

PDB ID : 5N0X / pdb_00005n0x
Title : Crystal structure of OphA-DeltaC6 in complex with SAM
Authors : Song, H.; Naismith, J.H.
Deposited on : 2017-02-03
Resolution : 1.67 Å(reported)

This is a Full wwPDB X-ray Structure Validation Report for a publicly released PDB entry.

We welcome your comments at validation@mail.wwpdb.org

A user guide is available at

<https://www.wwpdb.org/validation/2017/XrayValidationReportHelp>

with specific help available everywhere you see the ⓘ symbol.

The types of validation reports are described at

<http://www.wwpdb.org/validation/2017/FAQs#types>.

The following versions of software and data (see [references ⓘ](#)) were used in the production of this report:

MolProbity : 4-5-2 with Phenix2.0
Mogul : 2022.3.0, CSD as543be (2022)
Xtrriage (Phenix) : 2.0
EDS : 3.0
Buster-report : wwPDB partial adaption of 1.1.7 (2018)
Percentile statistics : 20250101.v01 (using entries in the PDB archive January 1st 2025)
CCP4 : 9.0.010 (Gargrove)
Density-Fitness : 1.0.12
Ideal geometry (proteins) : Engh & Huber (2001)
Ideal geometry (DNA, RNA) : Parkinson et al. (1996)
Validation Pipeline (wwPDB-VP) : 2.49

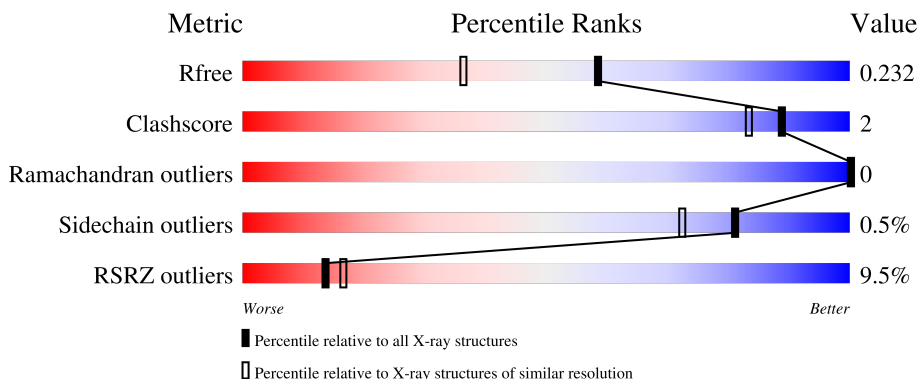
1 Overall quality at a glance

The following experimental techniques were used to determine the structure:

X-RAY DIFFRACTION

The reported resolution of this entry is 1.67 Å.

Percentile scores (ranging between 0-100) for global validation metrics of the entry are shown in the following graphic. The table shows the number of entries on which the scores are based.



Metric	Whole archive (#Entries)	Similar resolution (#Entries, resolution range(Å))
R_{free}	180053	1054 (1.68-1.68)
Clashscore	190562	1078 (1.68-1.68)
Ramachandran outliers	187476	1068 (1.68-1.68)
Sidechain outliers	187428	1067 (1.68-1.68)
RSRZ outliers	180081	1055 (1.68-1.68)

The table below summarises the geometric issues observed across the polymeric chains and their fit to the electron density. The red, orange, yellow and green segments of the lower bar indicate the fraction of residues that contain outliers for ≥ 3 , 2, 1 and 0 types of geometric quality criteria respectively. A grey segment represents the fraction of residues that are not modelled. The numeric value for each fraction is indicated below the corresponding segment, with a dot representing fractions $\leq 5\%$. The upper red bar (where present) indicates the fraction of residues that have poor fit to the electron density. The numeric value is given above the bar.

Mol	Chain	Length	Quality of chain
1	A	410	 10% 88% 9%
1	B	410	 8% 89% 8%

The following table lists non-polymeric compounds, carbohydrate monomers and non-standard residues in protein, DNA, RNA chains that are outliers for geometric or electron-density-fit criteria:

Mol	Type	Chain	Res	Chirality	Geometry	Clashes	Electron density
4	MG	B	502	-	-	-	X

2 Entry composition [i](#)

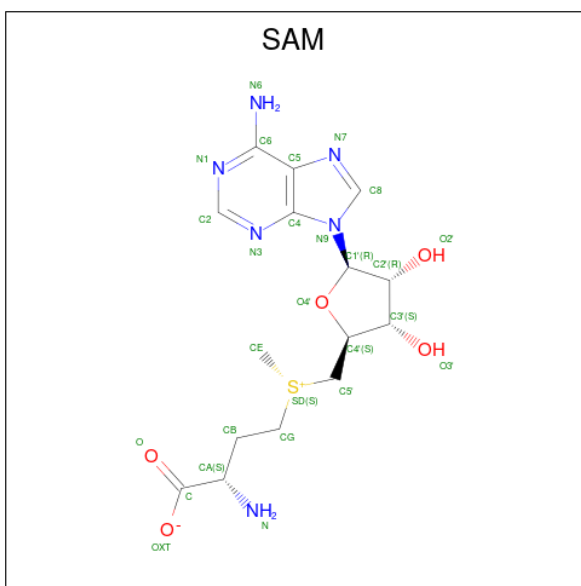
There are 5 unique types of molecules in this entry. The entry contains 6472 atoms, of which 0 are hydrogens and 0 are deuteriums.

In the tables below, the ZeroOcc column contains the number of atoms modelled with zero occupancy, the AltConf column contains the number of residues with at least one atom in alternate conformation and the Trace column contains the number of residues modelled with at most 2 atoms.

- Molecule 1 is a protein called Peptide N-Methyltransferase.

Mol	Chain	Residues	Atoms					ZeroOcc	AltConf	Trace
			Total	C	N	O	S			
1	A	374	Total	C	N	O	S	0	7	0
			2959	1878	507	557	17			
1	B	379	Total	C	N	O	S	0	8	0
			3010	1910	517	566	17			

- Molecule 2 is S-ADENOSYLMETHIONINE (CCD ID: SAM) (formula: $C_{15}H_{22}N_6O_5S$).



Mol	Chain	Residues	Atoms					ZeroOcc	AltConf
			Total	C	N	O	S		
2	A	1	Total	C	N	O	S	0	0
			27	15	6	5	1		
2	B	1	Total	C	N	O	S	0	0
			27	15	6	5	1		

- Molecule 3 is 1,2-ETHANEDIOL (CCD ID: EDO) (formula: $C_2H_6O_2$).



Mol	Chain	Residues	Atoms	ZeroOcc	AltConf
3	A	1	Total C O 4 2 2	0	0

- Molecule 4 is MAGNESIUM ION (CCD ID: MG) (formula: Mg).

Mol	Chain	Residues	Atoms	ZeroOcc	AltConf
4	A	1	Total Mg 1 1	0	0
4	B	1	Total Mg 1 1	0	0

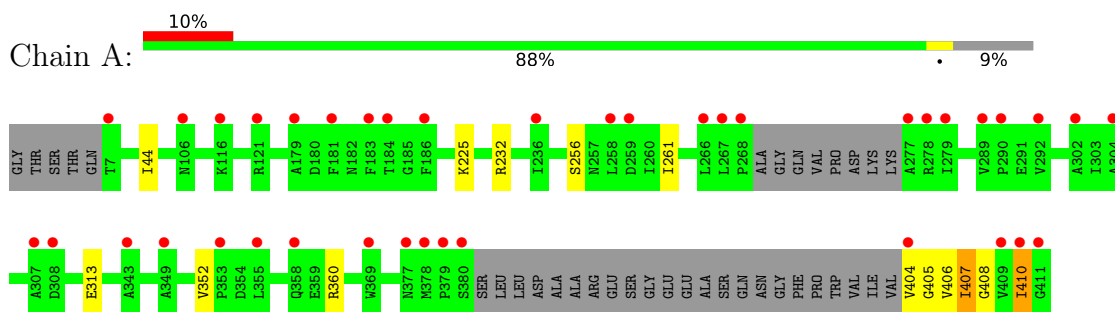
- Molecule 5 is water.

Mol	Chain	Residues	Atoms	ZeroOcc	AltConf
5	A	220	Total O 220 220	0	0
5	B	223	Total O 223 223	0	0

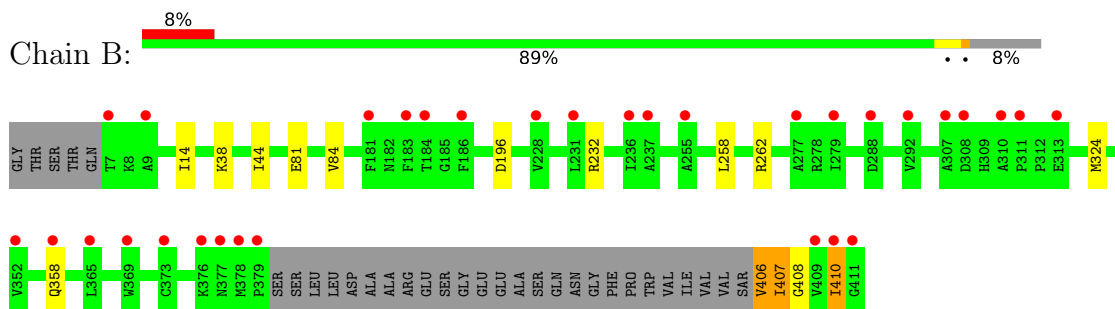
3 Residue-property plots [i](#)

These plots are drawn for all protein, RNA, DNA and oligosaccharide chains in the entry. The first graphic for a chain summarises the proportions of the various outlier classes displayed in the second graphic. The second graphic shows the sequence view annotated by issues in geometry and electron density. Residues are color-coded according to the number of geometric quality criteria for which they contain at least one outlier: green = 0, yellow = 1, orange = 2 and red = 3 or more. A red dot above a residue indicates a poor fit to the electron density ($RSRZ > 2$). Stretches of 2 or more consecutive residues without any outlier are shown as a green connector. Residues present in the sample, but not in the model, are shown in grey.

- Molecule 1: Peptide N-Methyltransferase



- Molecule 1: Peptide N-Methyltransferase



4 Data and refinement statistics

Property	Value	Source
Space group	P 21 21 21	Depositor
Cell constants a, b, c, α , β , γ	72.74Å 101.96Å 121.27Å 90.00° 90.00° 90.00°	Depositor
Resolution (Å)	78.04 – 1.67 78.04 – 1.67	Depositor EDS
% Data completeness (in resolution range)	99.1 (78.04-1.67) 99.1 (78.04-1.67)	Depositor EDS
R_{merge}	0.04	Depositor
R_{sym}	(Not available)	Depositor
$\langle I/\sigma(I) \rangle$ ¹	1.66 (at 1.67Å)	Xtrriage
Refinement program	REFMAC 5.8.0158	Depositor
R, R_{free}	0.196 , 0.224 (Not available) , 0.232	Depositor DCC
R_{free} test set	5147 reflections (4.91%)	wwPDB-VP
Wilson B-factor (Å ²)	26.8	Xtrriage
Anisotropy	0.252	Xtrriage
Bulk solvent k_{sol} (e/Å ³), B_{sol} (Å ²)	0.31 , 38.2	EDS
L-test for twinning ²	$\langle L \rangle = 0.48$, $\langle L^2 \rangle = 0.31$	Xtrriage
Estimated twinning fraction	No twinning to report.	Xtrriage
F_o, F_c correlation	0.96	EDS
Total number of atoms	6472	wwPDB-VP
Average B, all atoms (Å ²)	40.0	wwPDB-VP

Xtrriage's analysis on translational NCS is as follows: *The largest off-origin peak in the Patterson function is 4.17% of the height of the origin peak. No significant pseudotranslation is detected.*

¹Intensities estimated from amplitudes.

²Theoretical values of $\langle |L| \rangle$, $\langle L^2 \rangle$ for acentric reflections are 0.5, 0.333 respectively for untwinned datasets, and 0.375, 0.2 for perfectly twinned datasets.

5 Model quality [i](#)

5.1 Standard geometry [i](#)

Bond lengths and bond angles in the following residue types are not validated in this section: SAM, SAR, EDO, MG, MVA, IML

The Z score for a bond length (or angle) is the number of standard deviations the observed value is removed from the expected value. A bond length (or angle) with $|Z| > 5$ is considered an outlier worth inspection. RMSZ is the root-mean-square of all Z scores of the bond lengths (or angles).

Mol	Chain	Bond lengths		Bond angles	
		RMSZ	# Z >5	RMSZ	# Z >5
1	A	0.69	0/2997	0.81	0/4069
1	B	0.69	0/3056	0.81	0/4150
All	All	0.69	0/6053	0.81	0/8219

Chiral center outliers are detected by calculating the chiral volume of a chiral center and verifying if the center is modelled as a planar moiety or with the opposite hand. A planarity outlier is detected by checking planarity of atoms in a peptide group, atoms in a mainchain group or atoms of a sidechain that are expected to be planar.

Mol	Chain	#Chirality outliers	#Planarity outliers
1	A	0	1

There are no bond length outliers.

There are no bond angle outliers.

There are no chirality outliers.

All (1) planarity outliers are listed below:

Mol	Chain	Res	Type	Group
1	A	404	VAL	Peptide

5.2 Too-close contacts [i](#)

In the following table, the Non-H and H(model) columns list the number of non-hydrogen atoms and hydrogen atoms in the chain respectively. The H(added) column lists the number of hydrogen atoms added and optimized by MolProbity. The Clashes column lists the number of clashes within the asymmetric unit, whereas Symm-Clashes lists symmetry-related clashes.

Mol	Chain	Non-H	H(model)	H(added)	Clashes	Symm-Clashes
1	A	2959	0	2925	13	0
1	B	3010	0	2982	12	0
2	A	27	0	22	2	0
2	B	27	0	22	3	0
3	A	4	0	6	0	0
4	A	1	0	0	0	0
4	B	1	0	0	0	0
5	A	220	0	0	1	0
5	B	223	0	0	0	0
All	All	6472	0	5957	23	0

The all-atom clashscore is defined as the number of clashes found per 1000 atoms (including hydrogen atoms). The all-atom clashscore for this structure is 2.

All (23) close contacts within the same asymmetric unit are listed below, sorted by their clash magnitude.

Atom-1	Atom-2	Interatomic distance (Å)	Clash overlap (Å)
1:B:358[B]:GLN:CD	1:B:358[B]:GLN:H	1.93	0.75
1:A:410:ILE:H	2:B:501:SAM:HE3	1.65	0.60
1:A:256:SER:HB3	1:A:261:ILE:HD11	1.84	0.60
1:A:313[B]:GLU:HA	1:A:313[B]:GLU:OE1	2.04	0.57
1:B:324:MET:HE3	1:B:324:MET:HA	1.86	0.56
1:A:232:ARG:NH1	5:A:601:HOH:O	2.38	0.56
1:A:410:ILE:H	2:B:501:SAM:CE	2.18	0.56
2:A:501:SAM:HE3	1:B:410:ILE:H	1.73	0.54
1:B:358[B]:GLN:CD	1:B:358[B]:GLN:N	2.67	0.50
1:B:196:ASP:OD1	1:B:232:ARG:NH2	2.45	0.49
1:A:225[B]:LYS:HD3	1:A:225[B]:LYS:C	2.37	0.49
1:A:44:ILE:HG21	1:B:408:SAR:HA2	1.94	0.49
2:A:501:SAM:CE	1:B:410:ILE:H	2.28	0.46
1:A:407:IML:HD13	1:A:407:IML:C	2.49	0.43
1:B:258:LEU:O	1:B:262:ARG:HD3	2.18	0.43
1:A:256:SER:CB	1:A:261:ILE:HD11	2.48	0.43
1:A:407:IML:HA	1:A:408:SAR:HN1	1.79	0.42
1:A:410:ILE:N	2:B:501:SAM:CE	2.83	0.41
1:B:38[B]:LYS:HA	1:B:38[B]:LYS:HD2	1.85	0.41
1:B:406:MVA:HA	1:B:407:IML:HN1	1.69	0.41
1:A:408:SAR:HA2	1:B:44:ILE:HG21	2.03	0.41
1:B:81:GLU:HA	1:B:84:VAL:HG22	2.03	0.40
1:A:352:VAL:O	1:A:360:ARG:NH2	2.54	0.40

There are no symmetry-related clashes.

5.3 Torsion angles [i](#)

5.3.1 Protein backbone [i](#)

In the following table, the Percentiles column shows the percent Ramachandran outliers of the chain as a percentile score with respect to all X-ray entries followed by that with respect to entries of similar resolution.

The Analysed column shows the number of residues for which the backbone conformation was analysed, and the total number of residues.

Mol	Chain	Analysed	Favoured	Allowed	Outliers	Percentiles	
1	A	371/410 (90%)	361 (97%)	10 (3%)	0	100	100
1	B	381/410 (93%)	368 (97%)	13 (3%)	0	100	100
All	All	752/820 (92%)	729 (97%)	23 (3%)	0	100	100

There are no Ramachandran outliers to report.

5.3.2 Protein sidechains [i](#)

In the following table, the Percentiles column shows the percent sidechain outliers of the chain as a percentile score with respect to all X-ray entries followed by that with respect to entries of similar resolution.

The Analysed column shows the number of residues for which the sidechain conformation was analysed, and the total number of residues.

Mol	Chain	Analysed	Rotameric	Outliers	Percentiles	
1	A	315/336 (94%)	314 (100%)	1 (0%)	86	81
1	B	320/336 (95%)	318 (99%)	2 (1%)	78	67
All	All	635/672 (94%)	632 (100%)	3 (0%)	81	72

All (3) residues with a non-rotameric sidechain are listed below:

Mol	Chain	Res	Type
1	A	410	ILE
1	B	14	ILE
1	B	410	ILE

Sometimes sidechains can be flipped to improve hydrogen bonding and reduce clashes. All (2) such sidechains are listed below:

Mol	Chain	Res	Type
1	A	300	GLN
1	B	271	GLN

5.3.3 RNA [i](#)

There are no RNA molecules in this entry.

5.4 Non-standard residues in protein, DNA, RNA chains [i](#)

7 non-standard protein/DNA/RNA residues are modelled in this entry.

In the following table, the Counts columns list the number of bonds (or angles) for which Mogul statistics could be retrieved, the number of bonds (or angles) that are observed in the model and the number of bonds (or angles) that are defined in the Chemical Component Dictionary. The Link column lists molecule types, if any, to which the group is linked. The Z score for a bond length (or angle) is the number of standard deviations the observed value is removed from the expected value. A bond length (or angle) with $|Z| > 2$ is considered an outlier worth inspection. RMSZ is the root-mean-square of all Z scores of the bond lengths (or angles).

Mol	Type	Chain	Res	Link	Bond lengths			Bond angles		
					Counts	RMSZ	$\# Z > 2$	Counts	RMSZ	$\# Z > 2$
1	MVA	A	406	1	6,7,8	0.73	0	6,8,10	1.34	1 (16%)
1	MVA	B	406	1	6,7,8	0.51	0	6,8,10	1.12	1 (16%)
1	IML	A	407	1	7,8,9	0.90	0	6,9,11	2.71	4 (66%)
1	SAR	A	405	1	3,4,5	0.77	0	1,3,5	2.02	1 (100%)
1	SAR	A	408	1	3,4,5	0.47	0	1,3,5	1.74	0
1	IML	B	407	1	7,8,9	0.89	0	6,9,11	1.05	1 (16%)
1	SAR	B	408	1	3,4,5	0.52	0	1,3,5	1.78	0

In the following table, the Chirals column lists the number of chiral outliers, the number of chiral centers analysed, the number of these observed in the model and the number defined in the Chemical Component Dictionary. Similar counts are reported in the Torsion and Rings columns. '-' means no outliers of that kind were identified.

Mol	Type	Chain	Res	Link	Chirals	Torsions	Rings
1	MVA	A	406	1	-	0/6/8/10	-
1	MVA	B	406	1	-	0/6/8/10	-
1	IML	A	407	1	-	5/8/10/12	-
1	SAR	A	405	1	-	1/1/2/3	-
1	SAR	A	408	1	-	1/1/2/3	-
1	IML	B	407	1	-	3/8/10/12	-

Continued on next page...

Continued from previous page...

Mol	Type	Chain	Res	Link	Chirals	Torsions	Rings
1	SAR	B	408	1	-	1/1/2/3	-

There are no bond length outliers.

All (8) bond angle outliers are listed below:

Mol	Chain	Res	Type	Atoms	Z	Observed(°)	Ideal(°)
1	A	407	IML	CB-CA-C	4.75	119.28	112.77
1	A	407	IML	CG2-CB-CA	2.67	117.33	110.99
1	B	406	MVA	O-C-CA	-2.43	118.43	124.86
1	A	407	IML	CG1-CB-CA	2.39	117.19	111.17
1	A	406	MVA	O-C-CA	-2.37	118.59	124.86
1	A	407	IML	CG2-CB-CG1	-2.29	106.04	111.81
1	B	407	IML	O-C-CA	-2.24	118.93	124.86
1	A	405	SAR	O-C-CA	-2.02	118.24	125.17

There are no chirality outliers.

All (11) torsion outliers are listed below:

Mol	Chain	Res	Type	Atoms
1	A	405	SAR	C-CA-N-CN
1	A	407	IML	N-CA-CB-CG2
1	A	407	IML	C-CA-CB-CG2
1	A	407	IML	C-CA-CB-CG1
1	A	408	SAR	C-CA-N-CN
1	B	408	SAR	C-CA-N-CN
1	B	407	IML	CG2-CB-CG1-CD1
1	B	407	IML	CA-CB-CG1-CD1
1	A	407	IML	N-CA-CB-CG1
1	A	407	IML	CB-CA-N-CN
1	B	407	IML	CB-CA-N-CN

There are no ring outliers.

5 monomers are involved in 5 short contacts:

Mol	Chain	Res	Type	Clashes	Symm-Clashes
1	B	406	MVA	1	0
1	A	407	IML	2	0
1	A	408	SAR	2	0
1	B	407	IML	1	0
1	B	408	SAR	1	0

5.5 Carbohydrates [i](#)

There are no oligosaccharides in this entry.

5.6 Ligand geometry [i](#)

Of 5 ligands modelled in this entry, 2 are monoatomic - leaving 3 for Mogul analysis.

In the following table, the Counts columns list the number of bonds (or angles) for which Mogul statistics could be retrieved, the number of bonds (or angles) that are observed in the model and the number of bonds (or angles) that are defined in the Chemical Component Dictionary. The Link column lists molecule types, if any, to which the group is linked. The Z score for a bond length (or angle) is the number of standard deviations the observed value is removed from the expected value. A bond length (or angle) with $|Z| > 2$ is considered an outlier worth inspection. RMSZ is the root-mean-square of all Z scores of the bond lengths (or angles).

Mol	Type	Chain	Res	Link	Bond lengths			Bond angles		
					Counts	RMSZ	# Z > 2	Counts	RMSZ	# Z > 2
2	SAM	B	501	-	27,29,29	1.52	3 (11%)	34,42,42	1.98	7 (20%)
2	SAM	A	501	-	27,29,29	1.56	5 (18%)	34,42,42	1.91	9 (26%)
3	EDO	A	502	-	3,3,3	0.43	0	2,2,2	0.29	0

In the following table, the Chirals column lists the number of chiral outliers, the number of chiral centers analysed, the number of these observed in the model and the number defined in the Chemical Component Dictionary. Similar counts are reported in the Torsion and Rings columns. '-' means no outliers of that kind were identified.

Mol	Type	Chain	Res	Link	Chirals	Torsions	Rings
2	SAM	B	501	-	-	2/17/33/33	0/3/3/3
2	SAM	A	501	-	-	2/17/33/33	0/3/3/3
3	EDO	A	502	-	-	1/1/1/1	-

All (8) bond length outliers are listed below:

Mol	Chain	Res	Type	Atoms	Z	Observed(Å)	Ideal(Å)
2	B	501	SAM	C5-C4	4.96	1.47	1.39
2	A	501	SAM	C5-C4	4.40	1.46	1.39
2	B	501	SAM	CE-SD	-2.81	1.61	1.78
2	A	501	SAM	CE-SD	-2.79	1.61	1.78
2	A	501	SAM	C5-C6	2.54	1.48	1.41
2	B	501	SAM	C5-C6	2.50	1.48	1.41
2	A	501	SAM	C8-N7	2.48	1.36	1.31
2	A	501	SAM	C4-N9	-2.30	1.32	1.37

All (16) bond angle outliers are listed below:

Mol	Chain	Res	Type	Atoms	Z	Observed(°)	Ideal(°)
2	A	501	SAM	C5-C4-N3	-5.56	119.06	126.72
2	B	501	SAM	C5-C4-N3	-5.19	119.58	126.72
2	B	501	SAM	N3-C4-N9	4.59	134.97	127.17
2	A	501	SAM	N3-C4-N9	4.32	134.52	127.17
2	B	501	SAM	CG-SD-C5'	3.60	112.23	103.43
2	B	501	SAM	C2-N3-C4	3.44	120.23	111.83
2	A	501	SAM	C2-N3-C4	3.31	119.92	111.83
2	A	501	SAM	CG-SD-C5'	3.11	111.04	103.43
2	B	501	SAM	N3-C2-N1	-3.10	123.89	128.58
2	B	501	SAM	C4-N9-C8	2.92	108.80	105.74
2	A	501	SAM	C4-C5-N7	-2.81	107.37	110.58
2	A	501	SAM	C4-N9-C8	2.76	108.63	105.74
2	A	501	SAM	N3-C2-N1	-2.75	124.42	128.58
2	B	501	SAM	C4-C5-N7	-2.62	107.59	110.58
2	A	501	SAM	N9-C8-N7	-2.23	110.77	113.94
2	A	501	SAM	C5-N7-C8	2.14	106.81	103.45

There are no chirality outliers.

All (5) torsion outliers are listed below:

Mol	Chain	Res	Type	Atoms
2	B	501	SAM	OXT-C-CA-CB
2	B	501	SAM	O-C-CA-CB
3	A	502	EDO	O1-C1-C2-O2
2	A	501	SAM	OXT-C-CA-CB
2	A	501	SAM	O-C-CA-CB

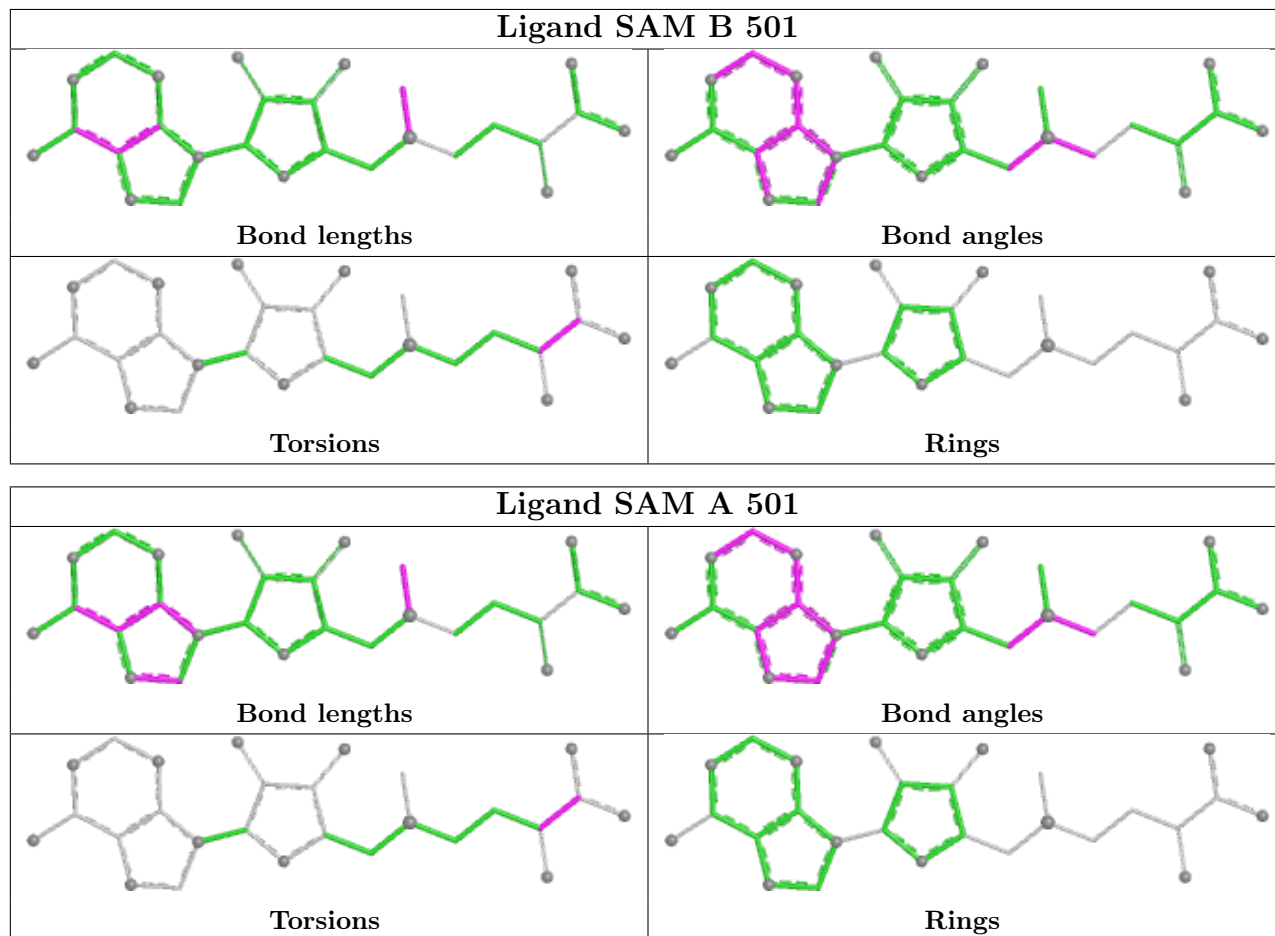
There are no ring outliers.

2 monomers are involved in 5 short contacts:

Mol	Chain	Res	Type	Clashes	Symm-Clashes
2	B	501	SAM	3	0
2	A	501	SAM	2	0

The following is a two-dimensional graphical depiction of Mogul quality analysis of bond lengths, bond angles, torsion angles, and ring geometry for all instances of the Ligand of Interest. In addition, ligands with molecular weight > 250 and outliers as shown on the validation Tables will also be included. For torsion angles, if less than 5% of the Mogul distribution of torsion angles is within 10 degrees of the torsion angle in question, then that torsion angle is considered an outlier. Any bond that is central to one or more torsion angles identified as an outlier by Mogul will be highlighted in the graph. For rings, the root-mean-square deviation (RMSD) between the ring

in question and similar rings identified by Mogul is calculated over all ring torsion angles. If the average RMSD is greater than 60 degrees and the minimal RMSD between the ring in question and any Mogul-identified rings is also greater than 60 degrees, then that ring is considered an outlier. The outliers are highlighted in purple. The color gray indicates Mogul did not find sufficient equivalents in the CSD to analyse the geometry.



5.7 Other polymers [i](#)

There are no such residues in this entry.

5.8 Polymer linkage issues [i](#)

There are no chain breaks in this entry.

6 Fit of model and data [i](#)

6.1 Protein, DNA and RNA chains [i](#)

In the following table, the column labelled ‘#RSRZ > 2’ contains the number (and percentage) of RSRZ outliers, followed by percent RSRZ outliers for the chain as percentile scores relative to all X-ray entries and entries of similar resolution. The OWAB column contains the minimum, median, 95th percentile and maximum values of the occupancy-weighted average B-factor per residue. The column labelled ‘Q < 0.9’ lists the number of (and percentage) of residues with an average occupancy less than 0.9.

Mol	Chain	Analysed	<RSRZ>	#RSRZ>2	OWAB(Å ²)	Q<0.9
1	A	370/410 (90%)	0.64	39 (10%) 11 14	12, 36, 64, 109	7 (1%)
1	B	376/410 (91%)	0.65	32 (8%) 16 21	12, 38, 63, 87	8 (2%)
All	All	746/820 (90%)	0.65	71 (9%) 14 16	12, 37, 64, 109	15 (2%)

All (71) RSRZ outliers are listed below:

Mol	Chain	Res	Type	RSRZ
1	B	409	VAL	11.3
1	A	411	GLY	8.6
1	B	411	GLY	8.2
1	B	410	ILE	8.0
1	A	267	LEU	7.6
1	A	410	ILE	7.5
1	A	409	VAL	6.8
1	A	268	PRO	5.0
1	A	277	ALA	4.6
1	A	404	VAL	4.5
1	A	378	MET	4.3
1	B	377	ASN	4.0
1	A	379	PRO	3.9
1	B	379	PRO	3.7
1	A	266	LEU	3.6
1	B	184	THR	3.5
1	B	378	MET	3.5
1	B	308	ASP	3.5
1	B	369	TRP	3.5
1	A	7	THR	3.4
1	A	278	ARG	3.3
1	B	7	THR	3.3
1	B	183	PHE	3.3
1	A	289	VAL	3.2

Continued on next page...

Continued from previous page...

Mol	Chain	Res	Type	RSRZ
1	A	358[A]	GLN	3.2
1	B	313[A]	GLU	3.1
1	B	307	ALA	3.1
1	A	184	THR	2.9
1	B	277	ALA	2.8
1	A	181	PHE	2.8
1	B	186	PHE	2.8
1	A	186	PHE	2.7
1	A	290	PRO	2.7
1	A	258	LEU	2.7
1	B	365	LEU	2.7
1	B	237	ALA	2.7
1	A	183	PHE	2.6
1	B	292	VAL	2.6
1	A	377	ASN	2.5
1	A	292	VAL	2.5
1	A	353	PRO	2.5
1	B	311	PRO	2.5
1	A	380	SER	2.3
1	A	307	ALA	2.3
1	B	181	PHE	2.3
1	A	121	ARG	2.3
1	B	288	ASP	2.3
1	B	373	CYS	2.3
1	B	228	VAL	2.3
1	B	352	VAL	2.3
1	B	231	LEU	2.3
1	A	304	ALA	2.2
1	B	255	ALA	2.2
1	A	106	ASN	2.2
1	B	236	ILE	2.2
1	B	279	ILE	2.2
1	A	355	LEU	2.2
1	A	343	ALA	2.2
1	A	369	TRP	2.2
1	A	279	ILE	2.2
1	B	358[A]	GLN	2.1
1	A	179	ALA	2.1
1	B	9	ALA	2.1
1	A	308	ASP	2.1
1	A	236	ILE	2.0
1	A	259	ASP	2.0

Continued on next page...

Continued from previous page...

Mol	Chain	Res	Type	RSRZ
1	A	302	ALA	2.0
1	A	349	ALA	2.0
1	B	310	ALA	2.0
1	A	116	LYS	2.0
1	B	376	LYS	2.0

6.2 Non-standard residues in protein, DNA, RNA chains [i](#)

In the following table, the Atoms column lists the number of modelled atoms in the group and the number defined in the chemical component dictionary. The B-factors column lists the minimum, median, 95th percentile and maximum values of B factors of atoms in the group. The column labelled 'Q< 0.9' lists the number of atoms with occupancy less than 0.9.

Mol	Type	Chain	Res	Atoms	RSCC	RSR	B-factors(Å ²)	Q<0.9
1	IML	B	407	9/10	0.79	0.22	64,66,67,68	0
1	IML	A	407	9/10	0.86	0.18	57,61,64,64	0
1	MVA	B	406	8/9	0.86	0.17	63,65,67,68	0
1	SAR	B	408	5/6	0.86	0.28	54,59,60,61	0
1	SAR	A	405	5/6	0.87	0.23	68,69,74,74	0
1	MVA	A	406	8/9	0.88	0.19	61,63,66,67	0
1	SAR	A	408	5/6	0.92	0.23	48,53,54,55	0

6.3 Carbohydrates [i](#)

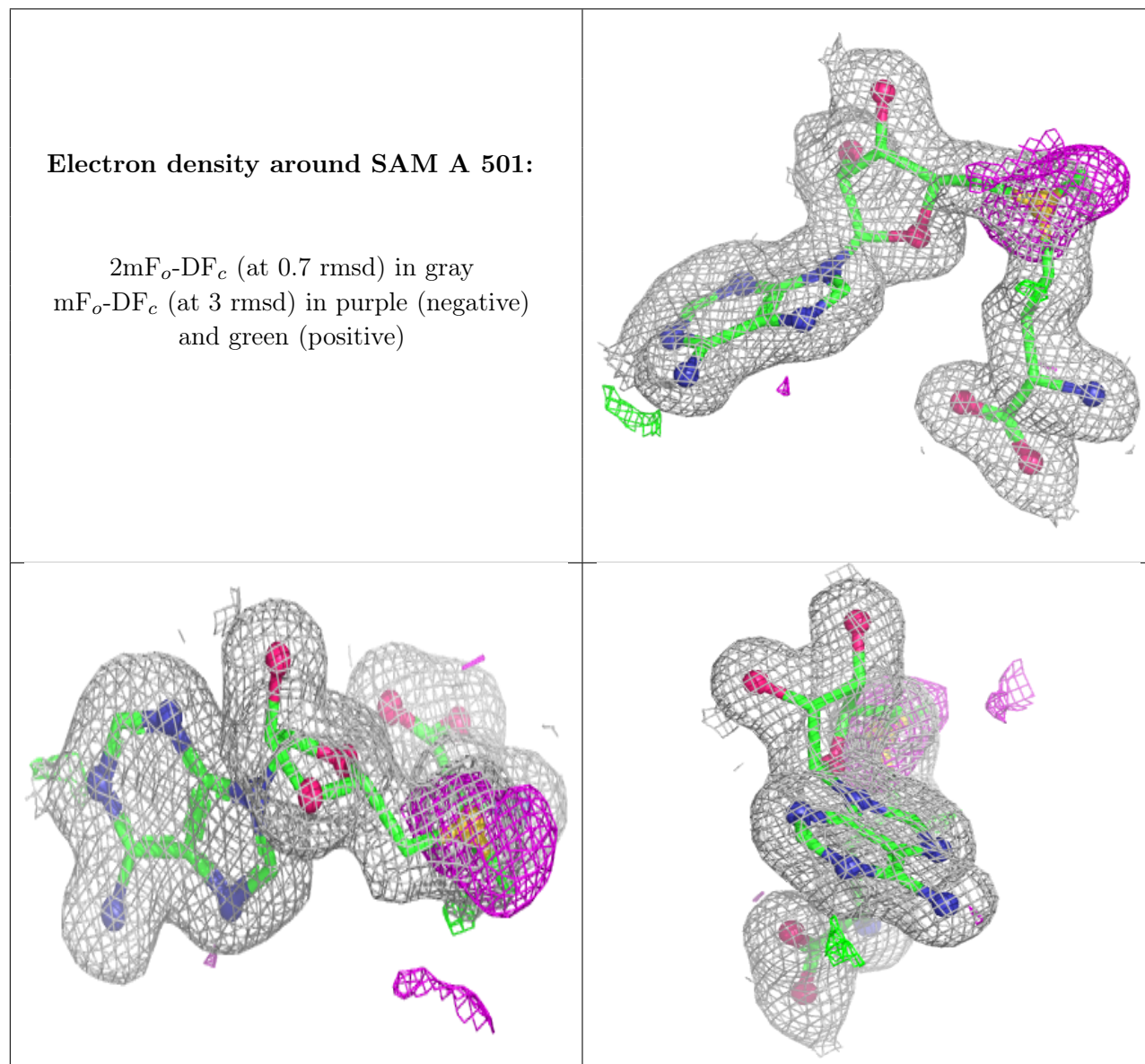
There are no oligosaccharides in this entry.

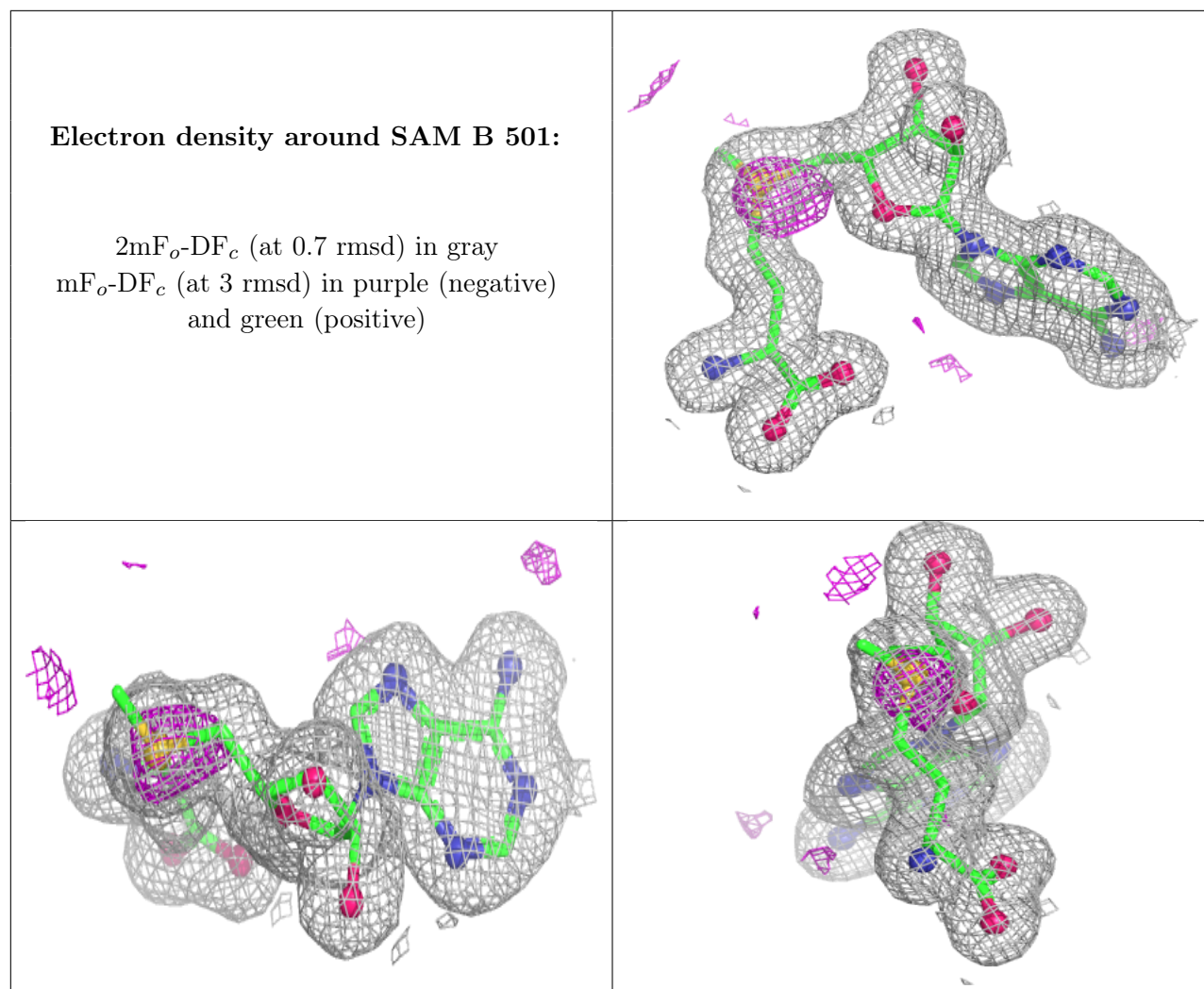
6.4 Ligands [i](#)

In the following table, the Atoms column lists the number of modelled atoms in the group and the number defined in the chemical component dictionary. The B-factors column lists the minimum, median, 95th percentile and maximum values of B factors of atoms in the group. The column labelled 'Q< 0.9' lists the number of atoms with occupancy less than 0.9.

Mol	Type	Chain	Res	Atoms	RSCC	RSR	B-factors(Å ²)	Q<0.9
4	MG	B	502	1/1	0.79	0.49	54,54,54,54	0
3	EDO	A	502	4/4	0.84	0.15	55,55,56,56	0
4	MG	A	503	1/1	0.86	0.40	48,48,48,48	0
2	SAM	A	501	27/27	0.95	0.07	19,21,24,27	0
2	SAM	B	501	27/27	0.97	0.06	19,22,24,25	1

The following is a graphical depiction of the model fit to experimental electron density of all instances of the Ligand of Interest. In addition, ligands with molecular weight > 250 and outliers as shown on the geometry validation Tables will also be included. Each fit is shown from different orientation to approximate a three-dimensional view.





6.5 Other polymers [\(i\)](#)

There are no such residues in this entry.