



Full wwPDB X-ray Structure Validation Report ⓘ

Mar 5, 2026 – 08:54 AM UTC

PDB ID : 5S7E / pdb_00005s7e
Title : XChem group deposition – Crystal Structure of human ACVR1 in complex with FM010930a
Authors : Williams, E.P.; Adamson, R.J.; Smil, D.; Krojer, T.; Burgess-Brown, N.; von Delft, F.; Bountra, C.; Bullock, A.N.
Deposited on : 2020-12-11
Resolution : 1.32 Å(reported)

This is a Full wwPDB X-ray Structure Validation Report for a publicly released PDB entry.

We welcome your comments at validation@mail.wwpdb.org

A user guide is available at

<https://www.wwpdb.org/validation/2017/XrayValidationReportHelp>

with specific help available everywhere you see the ⓘ symbol.

The types of validation reports are described at

<http://www.wwpdb.org/validation/2017/FAQs#types>.

The following versions of software and data (see [references ⓘ](#)) were used in the production of this report:

MolProbity : 4-5-2 with Phenix2.0
Mogul : 2022.3.0, CSD as543be (2022)
Xtrriage (Phenix) : 2.0
EDS : 3.0
Buster-report : wwPDB partial adaption of 1.1.7 (2018)
Percentile statistics : 20250101.v01 (using entries in the PDB archive January 1st 2025)
CCP4 : 9.0.010 (Gargrove)
Density-Fitness : 1.0.12
Ideal geometry (proteins) : Engh & Huber (2001)
Ideal geometry (DNA, RNA) : Parkinson et al. (1996)
Validation Pipeline (wwPDB-VP) : 2.49

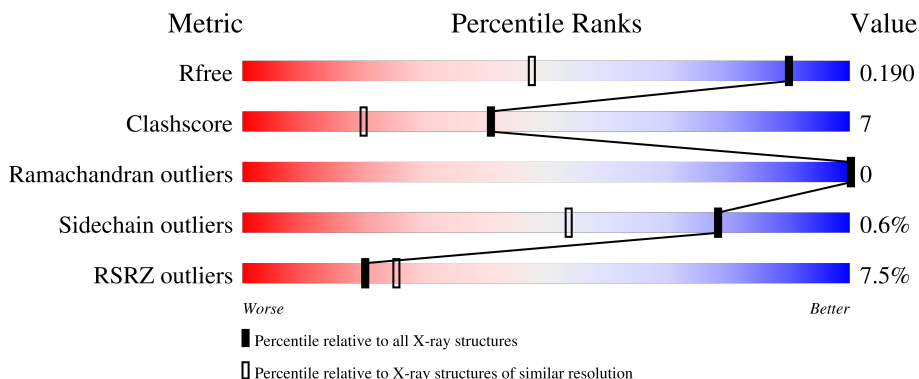
1 Overall quality at a glance i

The following experimental techniques were used to determine the structure:

X-RAY DIFFRACTION

The reported resolution of this entry is 1.32 Å.

Percentile scores (ranging between 0-100) for global validation metrics of the entry are shown in the following graphic. The table shows the number of entries on which the scores are based.



Metric	Whole archive (#Entries)	Similar resolution (#Entries, resolution range(Å))
R_{free}	180053	2531 (1.34-1.30)
Clashscore	190562	2585 (1.34-1.30)
Ramachandran outliers	187476	2528 (1.34-1.30)
Sidechain outliers	187428	2528 (1.34-1.30)
RSRZ outliers	180081	2528 (1.34-1.30)

The table below summarises the geometric issues observed across the polymeric chains and their fit to the electron density. The red, orange, yellow and green segments of the lower bar indicate the fraction of residues that contain outliers for ≥ 3 , 2, 1 and 0 types of geometric quality criteria respectively. A grey segment represents the fraction of residues that are not modelled. The numeric value for each fraction is indicated below the corresponding segment, with a dot representing fractions $\leq 5\%$. The upper red bar (where present) indicates the fraction of residues that have poor fit to the electron density. The numeric value is given above the bar.

Mol	Chain	Length	Quality of chain
1	A	301	 7% 84% 9% 6%
1	B	301	 7% 88% 9% 6%

The following table lists non-polymeric compounds, carbohydrate monomers and non-standard residues in protein, DNA, RNA chains that are outliers for geometric or electron-density-fit criteria:

Mol	Type	Chain	Res	Chirality	Geometry	Clashes	Electron density
7	XEA	B	505[B]	-	-	X	-

2 Entry composition i

There are 8 unique types of molecules in this entry. The entry contains 5837 atoms, of which 0 are hydrogens and 0 are deuteriums.

In the tables below, the ZeroOcc column contains the number of atoms modelled with zero occupancy, the AltConf column contains the number of residues with at least one atom in alternate conformation and the Trace column contains the number of residues modelled with at most 2 atoms.

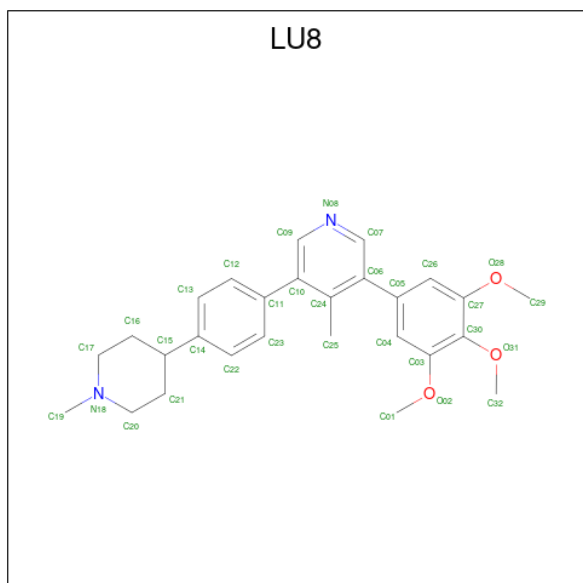
- Molecule 1 is a protein called Activin receptor type-1.

Mol	Chain	Residues	Atoms					ZeroOcc	AltConf	Trace
			Total	C	N	O	S			
1	A	283	2336	1499	398	424	15	0	14	0
1	B	293	2398	1531	415	437	15	0	10	0

There are 6 discrepancies between the modelled and reference sequences:

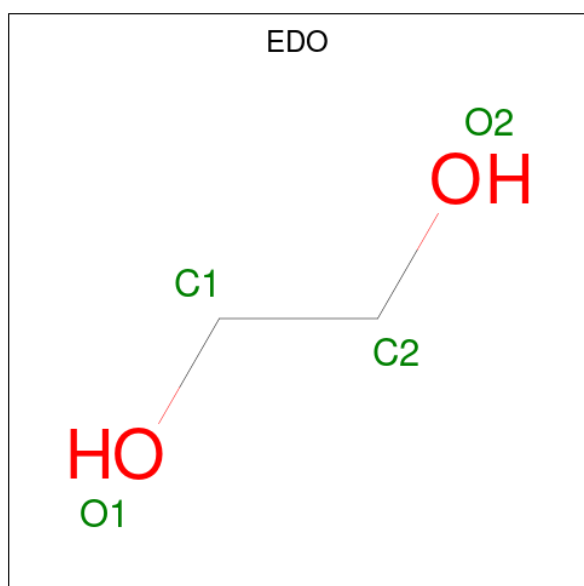
Chain	Residue	Modelled	Actual	Comment	Reference
A	199	SER	-	expression tag	UNP Q04771
A	200	MET	-	expression tag	UNP Q04771
A	207	ASP	GLN	engineered mutation	UNP Q04771
B	199	SER	-	expression tag	UNP Q04771
B	200	MET	-	expression tag	UNP Q04771
B	207	ASP	GLN	engineered mutation	UNP Q04771

- Molecule 2 is 4-methyl-3-[4-(1-methylpiperidin-4-yl)phenyl]-5-(3,4,5-trimethoxyphenyl)pyridine (CCD ID: LU8) (formula: C₂₇H₃₂N₂O₃).



Mol	Chain	Residues	Atoms				ZeroOcc	AltConf
2	A	1	Total	C	N	O	0	1
			64	54	4	6		
2	A	1	Total	C	N	O	0	0
			32	27	2	3		
2	A	1	Total	C	N	O	0	0
			32	27	2	3		
2	B	1	Total	C	N	O	0	0
			32	27	2	3		

- Molecule 3 is 1,2-ETHANEDIOL (CCD ID: EDO) (formula: C₂H₆O₂).



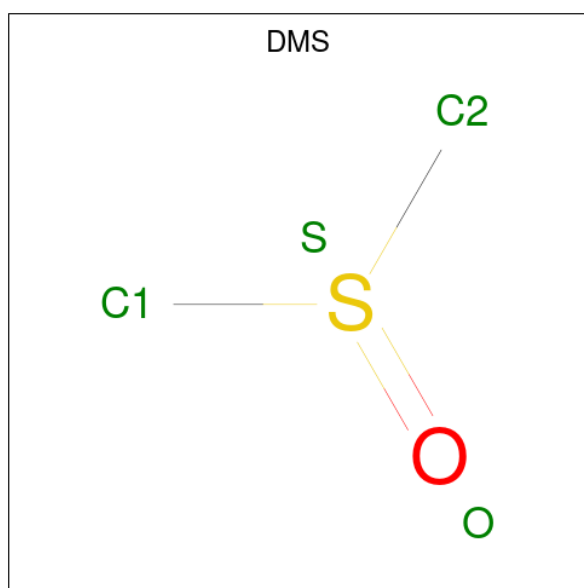
Mol	Chain	Residues	Atoms			ZeroOcc	AltConf
3	A	1	Total	C	O	0	0
			4	2	2		
3	A	1	Total	C	O	0	0
			4	2	2		
3	A	1	Total	C	O	0	0
			4	2	2		
3	A	1	Total	C	O	0	0
			4	2	2		
3	A	1	Total	C	O	0	0
			4	2	2		
3	A	1	Total	C	O	0	0
			4	2	2		
3	A	1	Total	C	O	0	0
			4	2	2		

Continued on next page...

Continued from previous page...

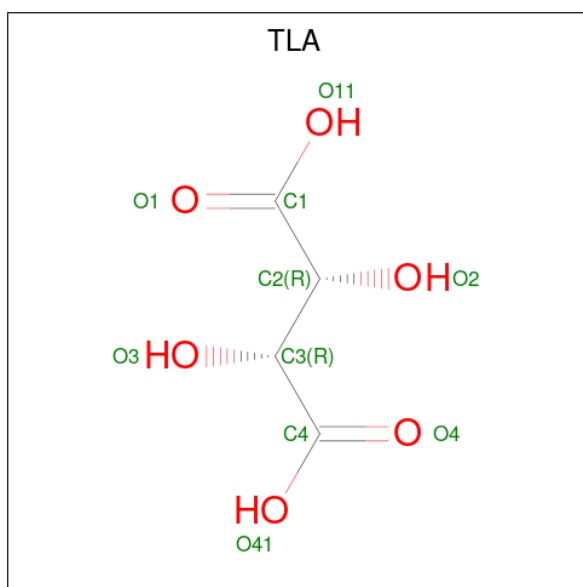
Mol	Chain	Residues	Atoms			ZeroOcc	AltConf
3	A	1	Total	C	O	0	0
			4	2	2		
3	B	1	Total	C	O	0	0
			4	2	2		
3	B	1	Total	C	O	0	0
			4	2	2		
3	B	1	Total	C	O	0	0
			4	2	2		

- Molecule 4 is DIMETHYL SULFOXIDE (CCD ID: DMS) (formula: C₂H₆OS).



Mol	Chain	Residues	Atoms				ZeroOcc	AltConf
4	A	1	Total	C	O	S	0	0
			4	2	1	1		
4	B	1	Total	C	O	S	0	0
			4	2	1	1		

- Molecule 5 is L(+)-TARTARIC ACID (CCD ID: TLA) (formula: C₄H₆O₆).



Mol	Chain	Residues	Atoms			ZeroOcc	AltConf
5	A	1	Total	C	O	0	0
			10	4	6		

- Molecule 6 is SULFATE ION (CCD ID: SO4) (formula: O₄S).



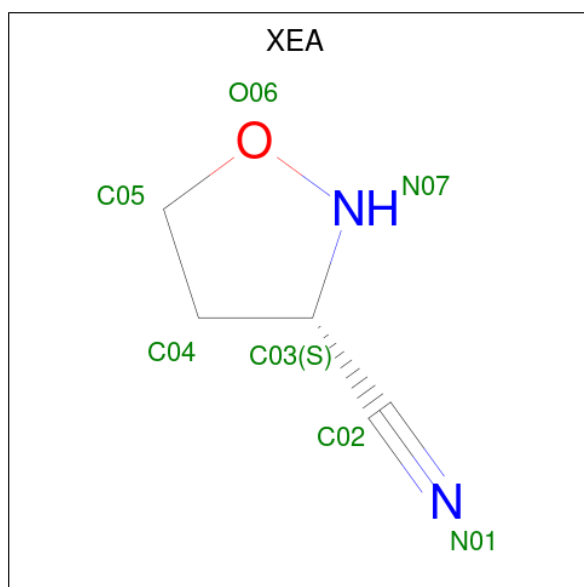
Mol	Chain	Residues	Atoms			ZeroOcc	AltConf
6	A	1	Total	O	S	0	0
			5	4	1		
6	A	1	Total	O	S	0	0
			5	4	1		
6	A	1	Total	O	S	0	0
			5	4	1		

Continued on next page...

Continued from previous page...

Mol	Chain	Residues	Atoms			ZeroOcc	AltConf
6	B	1	Total	O	S	0	0
			5	4	1		
6	B	1	Total	O	S	0	0
			5	4	1		
6	B	1	Total	O	S	0	0
			5	4	1		

- Molecule 7 is (3R)-1,2-oxazolidine-3-carbonitrile (CCD ID: XEA) (formula: C₄H₆N₂O).



Mol	Chain	Residues	Atoms				ZeroOcc	AltConf
7	B	1	Total	C	N	O	0	1
			14	8	4	2		

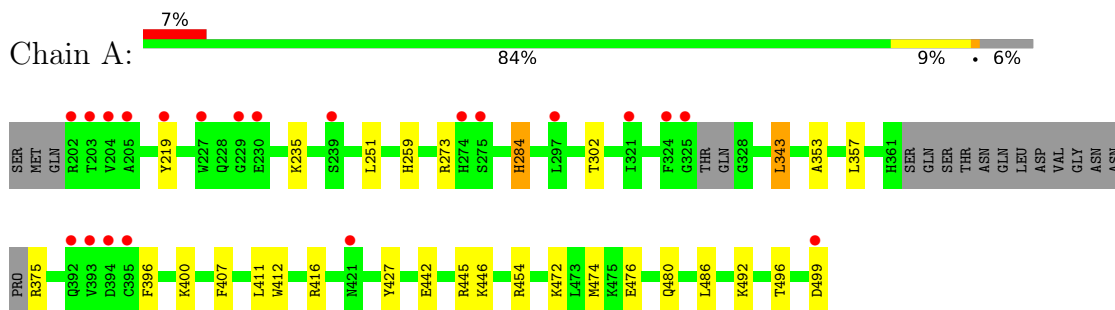
- Molecule 8 is water.

Mol	Chain	Residues	Atoms		ZeroOcc	AltConf
8	A	394	Total	O	0	1
			394	394		
8	B	435	Total	O	0	0
			435	435		

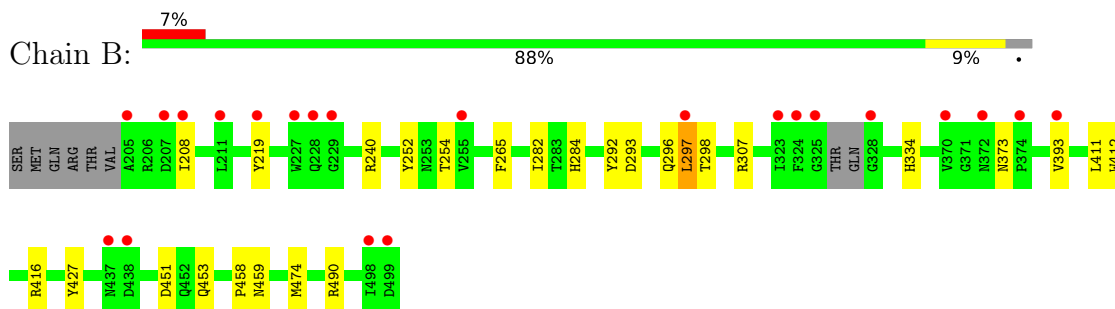
3 Residue-property plots [i](#)

These plots are drawn for all protein, RNA, DNA and oligosaccharide chains in the entry. The first graphic for a chain summarises the proportions of the various outlier classes displayed in the second graphic. The second graphic shows the sequence view annotated by issues in geometry and electron density. Residues are color-coded according to the number of geometric quality criteria for which they contain at least one outlier: green = 0, yellow = 1, orange = 2 and red = 3 or more. A red dot above a residue indicates a poor fit to the electron density ($RSRZ > 2$). Stretches of 2 or more consecutive residues without any outlier are shown as a green connector. Residues present in the sample, but not in the model, are shown in grey.

- Molecule 1: Activin receptor type-1



- Molecule 1: Activin receptor type-1



4 Data and refinement statistics i

Property	Value	Source
Space group	C 1 2 1	Depositor
Cell constants a, b, c, α , β , γ	127.19Å 84.64Å 88.26Å 90.00° 131.06° 90.00°	Depositor
Resolution (Å)	66.55 – 1.32 66.55 – 1.32	Depositor EDS
% Data completeness (in resolution range)	76.0 (66.55-1.32) 76.7 (66.55-1.32)	Depositor EDS
R_{merge}	0.05	Depositor
R_{sym}	(Not available)	Depositor
$\langle I/\sigma(I) \rangle$ ¹	0.99 (at 1.32Å)	Xtrriage
Refinement program	REFMAC 5.8.0267	Depositor
R, R_{free}	0.167 , 0.189 0.167 , 0.190	Depositor DCC
R_{free} test set	6345 reflections (3.81%)	wwPDB-VP
Wilson B-factor (Å ²)	19.2	Xtrriage
Anisotropy	0.083	Xtrriage
Bulk solvent k_{sol} (e/Å ³), B_{sol} (Å ²)	0.38 , 49.8	EDS
L-test for twinning ²	$\langle L \rangle = 0.50$, $\langle L^2 \rangle = 0.34$	Xtrriage
Estimated twinning fraction	0.015 for -h-2*1,-k,l	Xtrriage
F_o, F_c correlation	0.97	EDS
Total number of atoms	5837	wwPDB-VP
Average B, all atoms (Å ²)	24.0	wwPDB-VP

Xtrriage's analysis on translational NCS is as follows: *The largest off-origin peak in the Patterson function is 4.68% of the height of the origin peak. No significant pseudotranslation is detected.*

¹Intensities estimated from amplitudes.

²Theoretical values of $\langle |L| \rangle$, $\langle L^2 \rangle$ for acentric reflections are 0.5, 0.333 respectively for untwinned datasets, and 0.375, 0.2 for perfectly twinned datasets.

5 Model quality [i](#)

5.1 Standard geometry [i](#)

Bond lengths and bond angles in the following residue types are not validated in this section: LU8, EDO, DMS, XEA, TLA, SO4

The Z score for a bond length (or angle) is the number of standard deviations the observed value is removed from the expected value. A bond length (or angle) with $|Z| > 5$ is considered an outlier worth inspection. RMSZ is the root-mean-square of all Z scores of the bond lengths (or angles).

Mol	Chain	Bond lengths		Bond angles	
		RMSZ	# $ Z > 5$	RMSZ	# $ Z > 5$
1	A	1.00	2/2394 (0.1%)	1.12	1/3244 (0.0%)
1	B	1.02	1/2459 (0.0%)	1.15	3/3338 (0.1%)
All	All	1.01	3/4853 (0.1%)	1.13	4/6582 (0.1%)

All (3) bond length outliers are listed below:

Mol	Chain	Res	Type	Atoms	Z	Observed(Å)	Ideal(Å)
1	B	334	HIS	CE1-NE2	5.69	1.38	1.32
1	A	259	HIS	CE1-NE2	5.31	1.37	1.32
1	A	442	GLU	C-O	-5.28	1.18	1.24

All (4) bond angle outliers are listed below:

Mol	Chain	Res	Type	Atoms	Z	Observed(°)	Ideal(°)
1	A	284	HIS	CA-CB-CG	-6.63	107.17	113.80
1	B	451	ASP	CA-CB-CG	5.42	118.02	112.60
1	B	254	THR	CA-CB-OG1	-5.38	101.52	109.60
1	B	284	HIS	CB-CA-C	5.29	119.09	109.62

There are no chirality outliers.

There are no planarity outliers.

5.2 Too-close contacts [i](#)

In the following table, the Non-H and H(model) columns list the number of non-hydrogen atoms and hydrogen atoms in the chain respectively. The H(added) column lists the number of hydrogen atoms added and optimized by MolProbity. The Clashes column lists the number of clashes within the asymmetric unit, whereas Symm-Clashes lists symmetry-related clashes.

Mol	Chain	Non-H	H(model)	H(added)	Clashes	Symm-Clashes
1	A	2336	0	2307	35	0
1	B	2398	0	2364	23	0
2	A	128	0	0	0	0
2	B	32	0	0	1	0
3	A	36	0	54	3	0
3	B	16	0	23	1	0
4	A	4	0	6	0	0
4	B	4	0	6	1	0
5	A	10	0	4	2	0
6	A	15	0	0	0	0
6	B	15	0	0	0	0
7	B	14	0	0	6	1
8	A	394	0	0	12	0
8	B	435	0	0	7	1
All	All	5837	0	4764	64	1

The all-atom clashscore is defined as the number of clashes found per 1000 atoms (including hydrogen atoms). The all-atom clashscore for this structure is 7.

All (64) close contacts within the same asymmetric unit are listed below, sorted by their clash magnitude.

Atom-1	Atom-2	Interatomic distance (Å)	Clash overlap (Å)
7:B:505[B]:XEA:N07	7:B:505[B]:XEA:O06	1.63	1.02
7:B:505[A]:XEA:N07	7:B:505[A]:XEA:O06	1.58	0.99
7:B:505[A]:XEA:N01	8:B:601:HOH:O	2.01	0.92
1:A:472[B]:LYS:HD3	8:A:969:HOH:O	1.74	0.87
1:A:273:ARG:HB3	5:A:507:TLA:H3	1.61	0.82
1:A:446[A]:LYS:HE2	8:A:658:HOH:O	1.81	0.79
1:B:307:ARG:NH1	8:B:602:HOH:O	2.11	0.78
1:A:302:THR:HG21	1:A:499:ASP:OD2	1.86	0.75
1:A:499:ASP:OD1	8:A:602:HOH:O	2.07	0.72
1:B:411[B]:LEU:HG	1:B:474:MET:HE2	1.73	0.70
1:B:453:GLN:OE1	3:B:503:EDO:O1	2.07	0.70
1:A:407:PHE:HE2	1:A:411[B]:LEU:HD11	1.60	0.66
1:B:459:ASN:H	7:B:505[B]:XEA:C04	2.09	0.65
1:A:411[A]:LEU:HG	1:A:474:MET:HE2	1.78	0.65
1:B:393[A]:VAL:HG12	8:B:910:HOH:O	1.99	0.63
1:B:297:LEU:HD22	1:B:298[A]:THR:OG1	2.01	0.61
3:A:513:EDO:H11	8:A:760:HOH:O	2.01	0.61
1:A:407:PHE:CE2	1:A:411[B]:LEU:HD11	2.36	0.60
1:B:297:LEU:HD13	1:B:297:LEU:N	2.17	0.58
1:B:252:TYR:CD1	1:B:265:PHE:HB2	2.39	0.58

Continued on next page...

Continued from previous page...

Atom-1	Atom-2	Interatomic distance (Å)	Clash overlap (Å)
1:A:454:ARG:HH22	1:A:480:GLN:CD	2.11	0.58
1:A:445:ARG:HH12	3:A:504:EDO:C2	2.19	0.56
1:B:219:TYR:HB2	8:B:621:HOH:O	2.07	0.55
1:A:273:ARG:CB	5:A:507:TLA:H3	2.35	0.54
1:B:458:PRO:HA	7:B:505[B]:XEA:C05	2.38	0.54
1:A:472[B]:LYS:CD	8:A:969:HOH:O	2.44	0.52
1:B:490:ARG:HH22	4:B:504:DMS:H12	1.75	0.52
1:A:445:ARG:HH12	3:A:504:EDO:H21	1.75	0.51
1:B:208:ILE:CD1	1:B:282:ILE:HD13	2.39	0.51
1:A:396:PHE:CE2	1:A:400[B]:LYS:HE3	2.44	0.51
1:A:396:PHE:HE2	1:A:400[B]:LYS:HE3	1.76	0.51
1:A:302:THR:CG2	1:A:499:ASP:OD2	2.57	0.50
1:A:284:HIS:CE1	8:A:785:HOH:O	2.66	0.48
1:B:297:LEU:HD22	1:B:297:LEU:C	2.39	0.48
1:A:472[B]:LYS:HG3	8:A:745:HOH:O	2.14	0.48
1:B:412:TRP:CZ2	1:B:416:ARG:HD2	2.49	0.47
1:A:454:ARG:NH2	1:A:480:GLN:OE1	2.47	0.47
1:A:284:HIS:HE1	8:A:785:HOH:O	1.97	0.47
1:A:357[A]:LEU:HD11	1:A:375:ARG:HG2	1.97	0.46
1:B:208:ILE:HD11	1:B:282:ILE:HD13	1.96	0.46
1:A:412:TRP:CZ2	1:A:416:ARG:HD2	2.51	0.46
1:A:492:LYS:O	1:A:496:THR:HG23	2.17	0.45
1:B:373:ASN:HB2	8:B:663:HOH:O	2.17	0.45
1:A:284:HIS:CD2	8:A:924:HOH:O	2.69	0.45
1:A:251:LEU:C	1:A:251:LEU:HD23	2.42	0.44
1:A:427:TYR:CD2	1:A:427:TYR:C	2.96	0.44
1:A:284:HIS:HE1	8:A:697:HOH:O	2.02	0.43
1:A:476[B]:GLU:HB3	1:A:486:LEU:HG	2.00	0.43
1:B:293:ASP:O	1:B:297:LEU:CD1	2.67	0.43
1:B:292:TYR:CE2	1:B:296[B]:GLN:NE2	2.86	0.43
1:A:472[B]:LYS:O	1:A:476[B]:GLU:HG3	2.19	0.43
2:B:501:LU8:C25	2:B:501:LU8:C23	2.97	0.42
1:B:297:LEU:N	1:B:297:LEU:CD1	2.82	0.42
1:A:472[B]:LYS:CE	8:A:792:HOH:O	2.67	0.41
7:B:505[A]:XEA:C02	8:B:618:HOH:O	2.67	0.41
1:A:343[A]:LEU:CD2	1:A:353:ALA:HB2	2.50	0.41
1:A:476[A]:GLU:HB3	1:A:486:LEU:HG	2.02	0.41
1:A:486:LEU:HD23	8:A:667:HOH:O	2.20	0.41
1:B:427:TYR:CD2	1:B:427:TYR:C	2.98	0.41
1:A:219:TYR:CD1	1:A:235:LYS:HE3	2.56	0.41
1:A:357[A]:LEU:HA	1:A:357[A]:LEU:HD23	1.88	0.41

Continued on next page...

Continued from previous page...

Atom-1	Atom-2	Interatomic distance (Å)	Clash overlap (Å)
1:B:297:LEU:HD23	8:B:966:HOH:O	2.21	0.41

All (1) symmetry-related close contacts are listed below. The label for Atom-2 includes the symmetry operator and encoded unit-cell translations to be applied.

Atom-1	Atom-2	Interatomic distance (Å)	Clash overlap (Å)
7:B:505[B]:XEA:N01	8:B:601:HOH:O[2_454]	2.03	0.17

5.3 Torsion angles [i](#)

5.3.1 Protein backbone [i](#)

In the following table, the Percentiles column shows the percent Ramachandran outliers of the chain as a percentile score with respect to all X-ray entries followed by that with respect to entries of similar resolution.

The Analysed column shows the number of residues for which the backbone conformation was analysed, and the total number of residues.

Mol	Chain	Analysed	Favoured	Allowed	Outliers	Percentiles	
1	A	291/301 (97%)	289 (99%)	2 (1%)	0	100	100
1	B	299/301 (99%)	296 (99%)	3 (1%)	0	100	100
All	All	590/602 (98%)	585 (99%)	5 (1%)	0	100	100

There are no Ramachandran outliers to report.

5.3.2 Protein sidechains [i](#)

In the following table, the Percentiles column shows the percent sidechain outliers of the chain as a percentile score with respect to all X-ray entries followed by that with respect to entries of similar resolution.

The Analysed column shows the number of residues for which the sidechain conformation was analysed, and the total number of residues.

Mol	Chain	Analysed	Rotameric	Outliers	Percentiles	
1	A	251/270 (93%)	249 (99%)	2 (1%)	73	45
1	B	263/270 (97%)	261 (99%)	2 (1%)	73	45

Continued on next page...

Continued from previous page...

Mol	Chain	Analysed	Rotameric	Outliers	Percentiles
All	All	514/540 (95%)	510 (99%)	4 (1%)	78 45

All (4) residues with a non-rotameric sidechain are listed below:

Mol	Chain	Res	Type
1	A	343[A]	LEU
1	A	343[B]	LEU
1	B	240	ARG
1	B	297	LEU

Sometimes sidechains can be flipped to improve hydrogen bonding and reduce clashes. All (3) such sidechains are listed below:

Mol	Chain	Res	Type
1	A	284	HIS
1	A	361	HIS
1	B	459	ASN

5.3.3 RNA [i](#)

There are no RNA molecules in this entry.

5.4 Non-standard residues in protein, DNA, RNA chains [i](#)

There are no non-standard protein/DNA/RNA residues in this entry.

5.5 Carbohydrates [i](#)

There are no oligosaccharides in this entry.

5.6 Ligand geometry [i](#)

29 ligands are modelled in this entry.

In the following table, the Counts columns list the number of bonds (or angles) for which Mogul statistics could be retrieved, the number of bonds (or angles) that are observed in the model and the number of bonds (or angles) that are defined in the Chemical Component Dictionary. The Link column lists molecule types, if any, to which the group is linked. The Z score for a bond length (or angle) is the number of standard deviations the observed value is removed from the

expected value. A bond length (or angle) with $|Z| > 2$ is considered an outlier worth inspection. RMSZ is the root-mean-square of all Z scores of the bond lengths (or angles).

Mol	Type	Chain	Res	Link	Bond lengths			Bond angles		
					Counts	RMSZ	# $ Z > 2$	Counts	RMSZ	# $ Z > 2$
2	LU8	A	501[A]	-	35,35,35	0.81	1 (2%)	47,49,49	1.47	11 (23%)
3	EDO	A	516	-	3,3,3	0.11	0	2,2,2	0.06	0
3	EDO	A	513	-	3,3,3	0.22	0	2,2,2	0.61	0
6	SO4	A	511	-	4,4,4	0.50	0	6,6,6	0.48	0
3	EDO	A	517	-	3,3,3	0.38	0	2,2,2	0.48	0
3	EDO	A	504	-	3,3,3	0.18	0	2,2,2	0.14	0
7	XEA	B	505[A]	-	5,7,7	4.37	3 (60%)	5,8,8	4.40	2 (40%)
3	EDO	A	505	-	3,3,3	0.48	0	2,2,2	0.60	0
4	DMS	A	506	-	3,3,3	0.24	0	3,3,3	0.13	0
6	SO4	B	502	-	4,4,4	0.20	0	6,6,6	0.28	0
6	SO4	B	507	-	4,4,4	0.51	0	6,6,6	0.18	0
2	LU8	A	501[B]	-	35,35,35	0.68	0	47,49,49	1.03	3 (6%)
2	LU8	A	508	-	35,35,35	1.11	3 (8%)	47,49,49	1.77	13 (27%)
6	SO4	A	512	-	4,4,4	0.22	0	6,6,6	0.22	0
3	EDO	B	503	-	3,3,3	0.60	0	2,2,2	0.38	0
6	SO4	A	510	-	4,4,4	0.67	0	6,6,6	0.21	0
2	LU8	B	501	-	35,35,35	0.84	1 (2%)	47,49,49	1.59	11 (23%)
7	XEA	B	505[B]	-	5,7,7	3.97	3 (60%)	5,8,8	3.54	1 (20%)
3	EDO	A	515	-	3,3,3	0.21	0	2,2,2	0.36	0
5	TLA	A	507	-	9,9,9	1.04	0	12,12,12	1.03	0
3	EDO	A	514	-	3,3,3	0.03	0	2,2,2	0.13	0
3	EDO	A	503	-	3,3,3	1.03	0	2,2,2	0.53	0
3	EDO	A	502	-	3,3,3	0.59	0	2,2,2	0.27	0
3	EDO	B	508	-	3,3,3	0.74	0	2,2,2	0.56	0
2	LU8	A	509	-	35,35,35	1.11	1 (2%)	47,49,49	1.61	11 (23%)
6	SO4	B	506	-	4,4,4	0.29	0	6,6,6	0.12	0
3	EDO	B	510	-	3,3,3	0.19	0	2,2,2	0.09	0
3	EDO	B	509	-	3,3,3	0.62	0	2,2,2	0.47	0
4	DMS	B	504	-	3,3,3	0.29	0	3,3,3	0.08	0

In the following table, the Chirals column lists the number of chiral outliers, the number of chiral centers analysed, the number of these observed in the model and the number defined in the Chemical Component Dictionary. Similar counts are reported in the Torsion and Rings columns. '-' means no outliers of that kind were identified.

Mol	Type	Chain	Res	Link	Chirals	Torsions	Rings
2	LU8	A	501[A]	-	-	0/18/28/28	0/4/4/4
3	EDO	A	516	-	-	1/1/1/1	-

Continued on next page...

Continued from previous page...

Mol	Type	Chain	Res	Link	Chirals	Torsions	Rings
3	EDO	A	513	-	-	1/1/1/1	-
3	EDO	A	517	-	-	1/1/1/1	-
3	EDO	A	504	-	-	1/1/1/1	-
7	XEA	B	505[A]	-	-	0/0/9/9	0/1/1/1
3	EDO	A	505	-	-	0/1/1/1	-
2	LU8	A	501[B]	-	-	1/18/28/28	0/4/4/4
2	LU8	A	508	-	-	2/18/28/28	0/4/4/4
3	EDO	B	503	-	-	0/1/1/1	-
2	LU8	B	501	-	-	0/18/28/28	0/4/4/4
7	XEA	B	505[B]	-	-	0/0/9/9	0/1/1/1
3	EDO	A	515	-	-	1/1/1/1	-
5	TLA	A	507	-	-	6/12/12/12	-
3	EDO	A	514	-	-	1/1/1/1	-
3	EDO	A	503	-	-	1/1/1/1	-
3	EDO	A	502	-	-	1/1/1/1	-
3	EDO	B	508	-	-	1/1/1/1	-
2	LU8	A	509	-	-	3/18/28/28	0/4/4/4
3	EDO	B	510	-	-	1/1/1/1	-
3	EDO	B	509	-	-	1/1/1/1	-

All (12) bond length outliers are listed below:

Mol	Chain	Res	Type	Atoms	Z	Observed(Å)	Ideal(Å)
7	B	505[A]	XEA	O06-C05	-8.52	1.25	1.44
7	B	505[B]	XEA	O06-C05	-7.05	1.28	1.44
7	B	505[B]	XEA	C04-C03	-3.79	1.48	1.53
7	B	505[B]	XEA	C03-C02	3.76	1.53	1.48
7	B	505[A]	XEA	C03-C02	3.49	1.53	1.48
7	B	505[A]	XEA	C04-C03	-3.28	1.49	1.53
2	A	508	LU8	C06-C24	-2.30	1.36	1.40
2	B	501	LU8	C27-C30	-2.19	1.36	1.41
2	A	501[A]	LU8	C10-C11	2.12	1.53	1.49
2	A	509	LU8	C06-C05	-2.08	1.45	1.49
2	A	508	LU8	C26-C05	2.03	1.43	1.39
2	A	508	LU8	C10-C11	-2.01	1.45	1.49

All (52) bond angle outliers are listed below:

Mol	Chain	Res	Type	Atoms	Z	Observed(°)	Ideal(°)
7	B	505[A]	XEA	O06-C05-C04	-8.15	90.85	105.36
7	B	505[B]	XEA	C03-C02-N01	-7.85	167.33	178.01

Continued on next page...

Continued from previous page...

Mol	Chain	Res	Type	Atoms	Z	Observed(°)	Ideal(°)
7	B	505[A]	XEA	C05-C04-C03	-5.23	90.69	102.96
2	A	508	LU8	O02-C03-C30	4.69	123.18	115.14
2	B	501	LU8	C20-N18-C17	4.14	116.13	109.54
2	A	508	LU8	O02-C03-C04	-3.89	117.38	124.08
2	A	508	LU8	C07-C06-C05	-3.74	114.15	119.56
2	A	509	LU8	C32-O31-C30	3.60	124.52	114.74
2	A	509	LU8	C09-N08-C07	3.58	122.38	117.51
2	A	509	LU8	C21-C20-N18	3.55	115.77	111.20
2	A	501[A]	LU8	C20-N18-C17	3.49	115.09	109.54
2	B	501	LU8	C20-C21-C15	3.49	115.08	111.00
2	A	501[A]	LU8	C17-C16-C15	3.46	115.05	111.00
2	A	508	LU8	C04-C05-C26	3.45	123.40	118.35
2	A	509	LU8	C16-C17-N18	3.26	115.40	111.20
2	A	508	LU8	C26-C05-C06	-3.13	115.36	120.61
2	A	501[A]	LU8	C29-O28-C27	3.13	122.10	117.51
2	A	509	LU8	C06-C07-N08	-3.13	119.86	124.27
2	B	501	LU8	C06-C07-N08	-2.99	120.06	124.27
2	A	509	LU8	C12-C13-C14	2.92	124.10	121.18
2	A	509	LU8	C20-N18-C17	2.91	114.17	109.54
2	A	501[A]	LU8	C16-C17-N18	2.81	114.82	111.20
2	A	509	LU8	C23-C22-C14	-2.81	118.38	121.18
2	B	501	LU8	C09-N08-C07	2.79	121.30	117.51
2	B	501	LU8	C22-C14-C13	2.74	121.71	118.30
2	B	501	LU8	C19-N18-C20	-2.71	105.47	110.63
2	A	508	LU8	C12-C11-C10	2.64	125.28	120.91
2	A	508	LU8	C06-C07-N08	-2.55	120.67	124.27
2	A	501[A]	LU8	C32-O31-C30	2.51	121.54	114.74
2	A	501[A]	LU8	C06-C07-N08	-2.50	120.75	124.27
2	A	508	LU8	C12-C13-C14	2.48	123.66	121.18
2	A	501[A]	LU8	C20-C21-C15	-2.44	108.14	111.00
2	A	509	LU8	C13-C12-C11	-2.40	118.04	121.12
2	A	501[B]	LU8	C06-C07-N08	-2.39	120.90	124.27
2	A	501[B]	LU8	C11-C10-C24	2.30	126.27	122.47
2	A	509	LU8	C06-C24-C10	2.30	121.18	118.39
2	A	501[A]	LU8	C21-C15-C14	-2.29	107.26	112.67
2	B	501	LU8	C01-O02-C03	2.28	120.86	117.51
2	A	501[A]	LU8	C09-C10-C11	-2.26	116.29	119.56
2	B	501	LU8	C23-C22-C14	-2.23	118.95	121.18
2	A	508	LU8	C17-C16-C15	-2.21	108.41	111.00
2	B	501	LU8	O02-C03-C30	2.18	118.88	115.14
2	A	508	LU8	C27-C30-C03	2.16	121.67	119.56
2	A	509	LU8	C11-C10-C24	2.14	126.00	122.47

Continued on next page...

Continued from previous page...

Mol	Chain	Res	Type	Atoms	Z	Observed(°)	Ideal(°)
2	A	501[B]	LU8	C09-C10-C11	-2.12	116.50	119.56
2	A	508	LU8	C05-C26-C27	-2.12	117.31	120.19
2	B	501	LU8	C21-C15-C14	-2.11	107.66	112.67
2	A	501[A]	LU8	C01-O02-C03	2.11	120.61	117.51
2	A	508	LU8	C22-C23-C11	2.09	123.81	121.12
2	A	501[A]	LU8	C11-C10-C24	2.06	125.87	122.47
2	B	501	LU8	O02-C03-C04	-2.06	120.53	124.08
2	A	508	LU8	C23-C11-C10	-2.03	117.55	120.91

There are no chirality outliers.

All (23) torsion outliers are listed below:

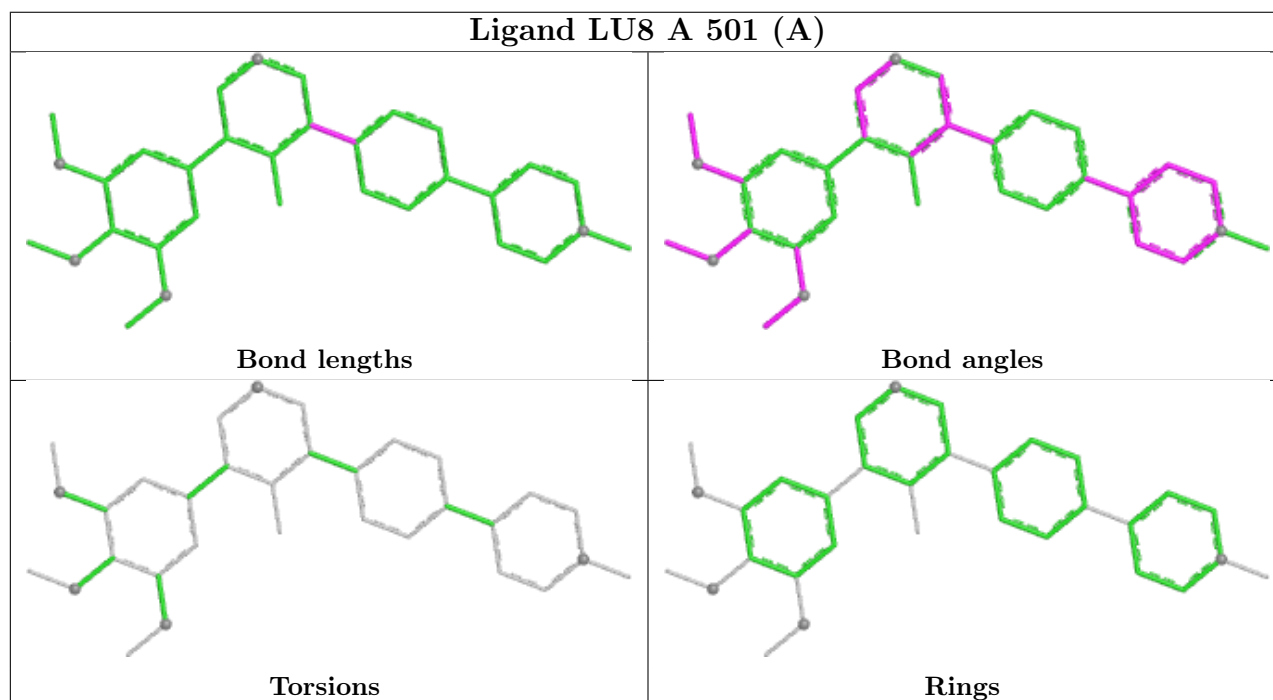
Mol	Chain	Res	Type	Atoms
5	A	507	TLA	O3-C3-C4-O4
5	A	507	TLA	O3-C3-C4-O41
5	A	507	TLA	O1-C1-C2-O2
5	A	507	TLA	O11-C1-C2-O2
2	A	508	LU8	C30-C03-O02-C01
3	B	508	EDO	O1-C1-C2-O2
2	A	508	LU8	C04-C03-O02-C01
3	A	514	EDO	O1-C1-C2-O2
3	A	515	EDO	O1-C1-C2-O2
3	B	509	EDO	O1-C1-C2-O2
3	A	502	EDO	O1-C1-C2-O2
3	A	513	EDO	O1-C1-C2-O2
3	A	516	EDO	O1-C1-C2-O2
5	A	507	TLA	O11-C1-C2-C3
5	A	507	TLA	O1-C1-C2-C3
3	B	510	EDO	O1-C1-C2-O2
2	A	509	LU8	C04-C05-C06-C07
3	A	503	EDO	O1-C1-C2-O2
3	A	517	EDO	O1-C1-C2-O2
2	A	501[B]	LU8	C13-C14-C15-C21
2	A	509	LU8	C22-C14-C15-C21
3	A	504	EDO	O1-C1-C2-O2
2	A	509	LU8	C04-C05-C06-C24

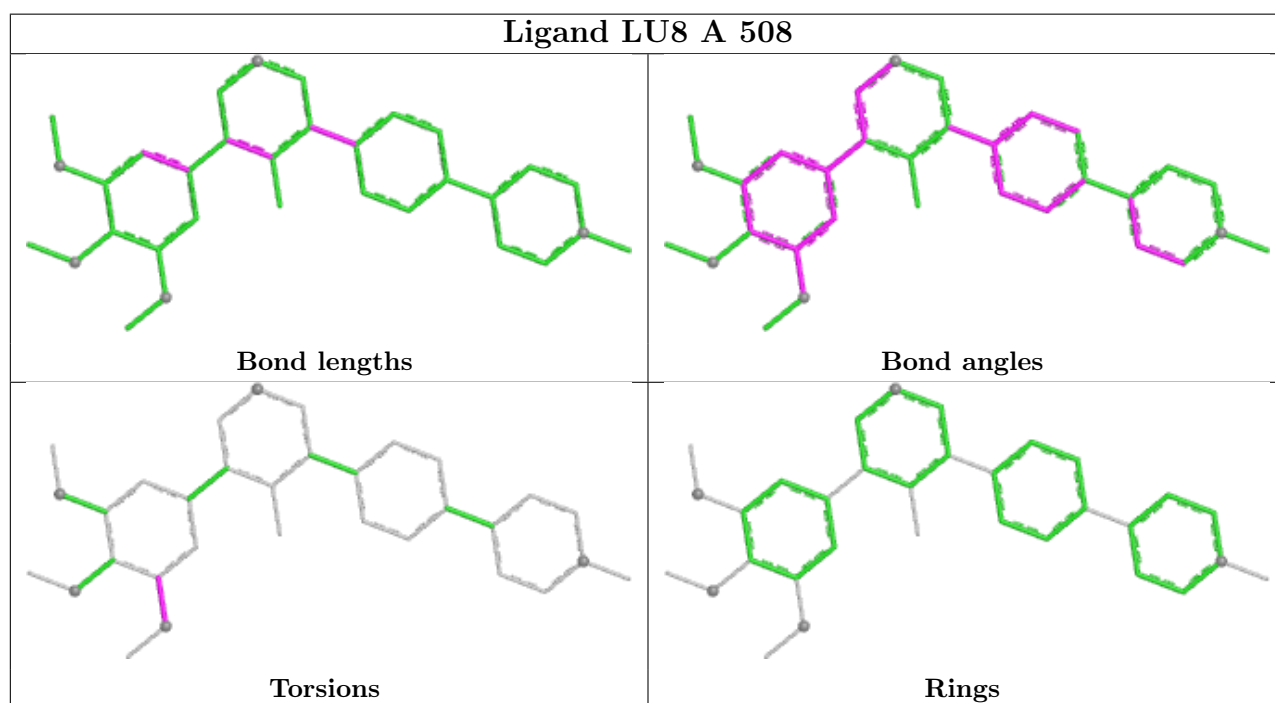
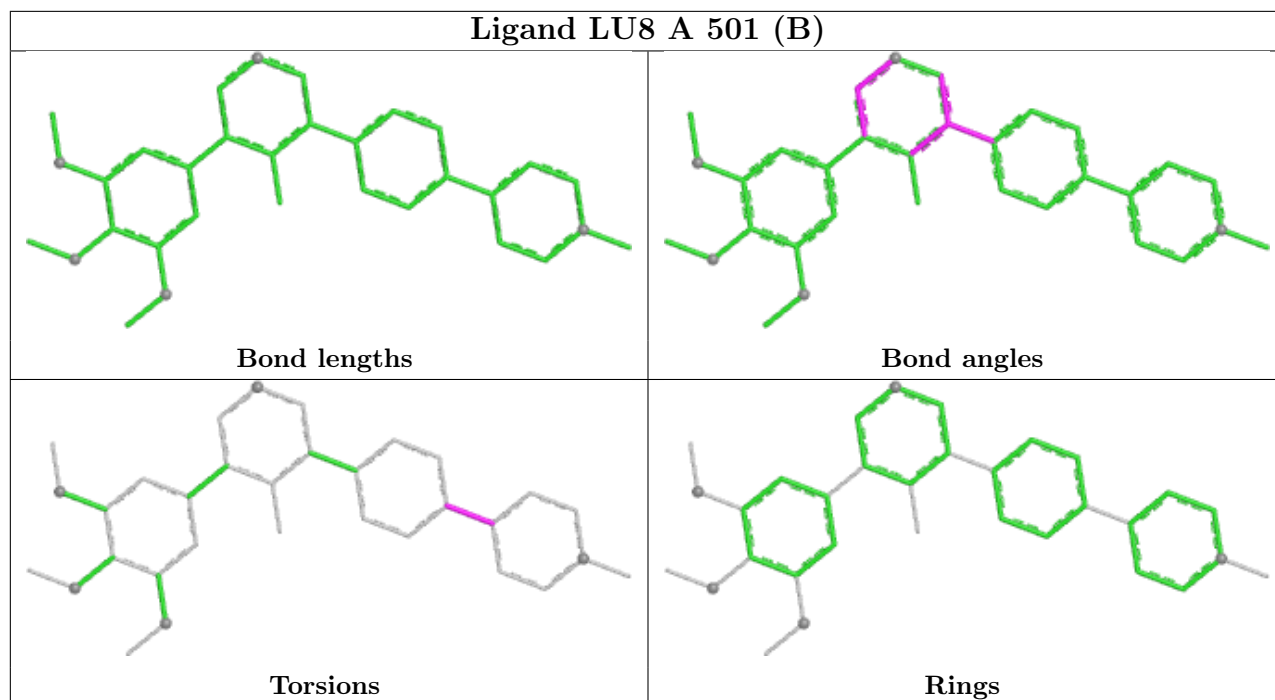
There are no ring outliers.

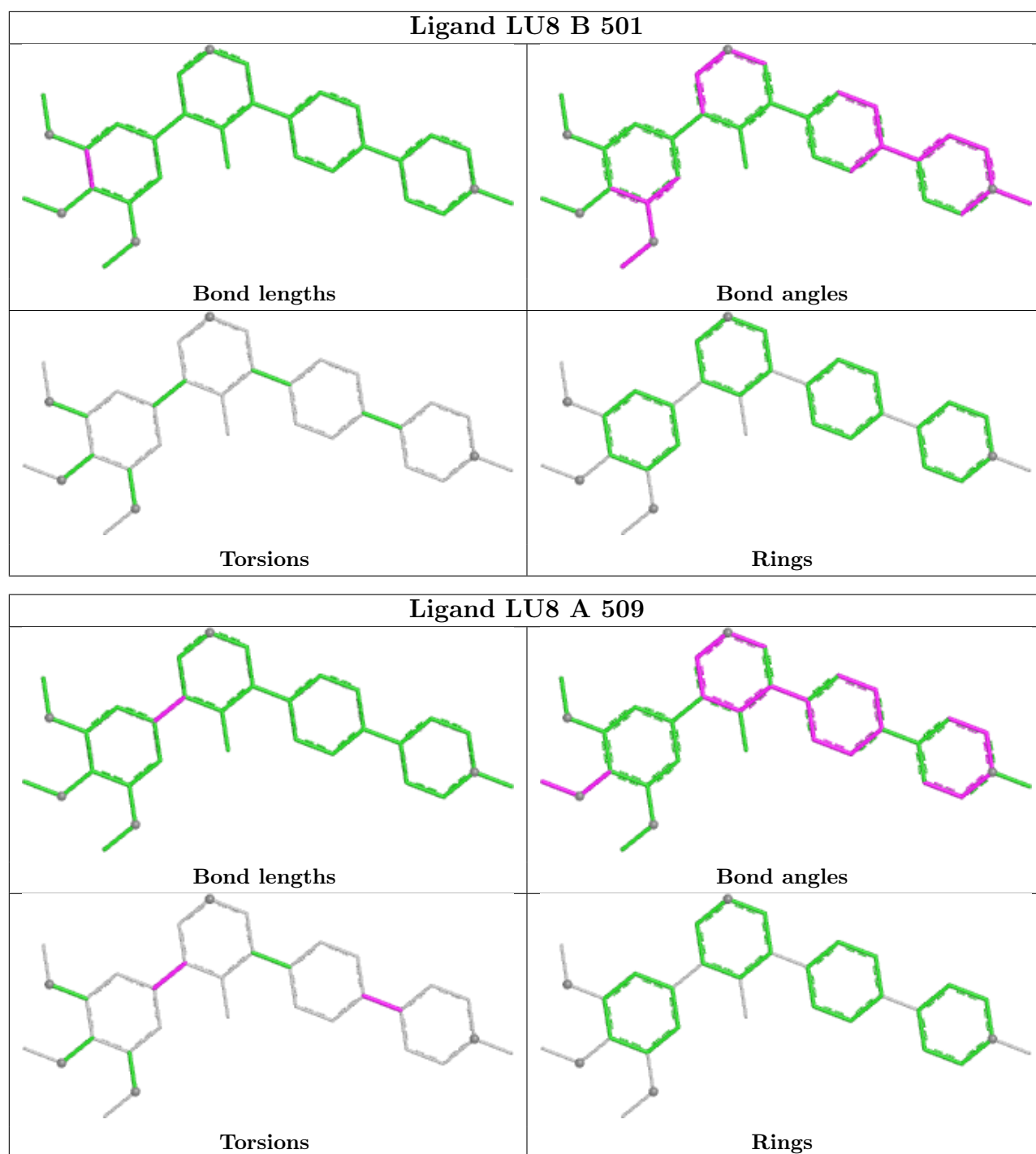
8 monomers are involved in 15 short contacts:

Mol	Chain	Res	Type	Clashes	Symm-Clashes
3	A	513	EDO	1	0
3	A	504	EDO	2	0
7	B	505[A]	XEA	3	0
3	B	503	EDO	1	0
2	B	501	LU8	1	0
7	B	505[B]	XEA	3	1
5	A	507	TLA	2	0
4	B	504	DMS	1	0

The following is a two-dimensional graphical depiction of Mogul quality analysis of bond lengths, bond angles, torsion angles, and ring geometry for all instances of the Ligand of Interest. In addition, ligands with molecular weight > 250 and outliers as shown on the validation Tables will also be included. For torsion angles, if less than 5% of the Mogul distribution of torsion angles is within 10 degrees of the torsion angle in question, then that torsion angle is considered an outlier. Any bond that is central to one or more torsion angles identified as an outlier by Mogul will be highlighted in the graph. For rings, the root-mean-square deviation (RMSD) between the ring in question and similar rings identified by Mogul is calculated over all ring torsion angles. If the average RMSD is greater than 60 degrees and the minimal RMSD between the ring in question and any Mogul-identified rings is also greater than 60 degrees, then that ring is considered an outlier. The outliers are highlighted in purple. The color gray indicates Mogul did not find sufficient equivalents in the CSD to analyse the geometry.







5.7 Other polymers [\(i\)](#)

There are no such residues in this entry.

5.8 Polymer linkage issues [\(i\)](#)

There are no chain breaks in this entry.

6 Fit of model and data

6.1 Protein, DNA and RNA chains

In the following table, the column labelled ‘#RSRZ > 2’ contains the number (and percentage) of RSRZ outliers, followed by percent RSRZ outliers for the chain as percentile scores relative to all X-ray entries and entries of similar resolution. The OWAB column contains the minimum, median, 95th percentile and maximum values of the occupancy-weighted average B-factor per residue. The column labelled ‘Q < 0.9’ lists the number of (and percentage) of residues with an average occupancy less than 0.9.

Mol	Chain	Analysed	<RSRZ>	#RSRZ>2	OWAB(Å ²)	Q<0.9
1	A	283/301 (94%)	0.42	21 (7%) 20 26	7, 19, 39, 57	14 (4%)
1	B	293/301 (97%)	0.39	22 (7%) 20 25	7, 19, 37, 56	10 (3%)
All	All	576/602 (95%)	0.40	43 (7%) 20 25	7, 19, 38, 57	24 (4%)

All (43) RSRZ outliers are listed below:

Mol	Chain	Res	Type	RSRZ
1	B	227[A]	TRP	6.7
1	A	297	LEU	5.8
1	B	205	ALA	5.1
1	A	275	SER	4.2
1	B	297	LEU	4.2
1	B	499	ASP	4.1
1	B	325	GLY	4.1
1	A	393	VAL	3.9
1	A	202	ARG	3.7
1	A	325	GLY	3.7
1	B	498	ILE	3.7
1	B	372	ASN	3.6
1	A	203	THR	3.6
1	A	219	TYR	3.6
1	B	219	TYR	3.6
1	A	239	SER	3.5
1	A	227	TRP	3.5
1	B	208	ILE	3.4
1	B	229	GLY	3.2
1	B	323	ILE	3.1
1	A	395	CYS	3.1
1	A	394	ASP	3.0
1	A	324	PHE	3.0
1	B	324	PHE	2.9

Continued on next page...

Continued from previous page...

Mol	Chain	Res	Type	RSRZ
1	B	211	LEU	2.9
1	B	393[A]	VAL	2.9
1	A	205	ALA	2.8
1	A	499	ASP	2.6
1	B	255	VAL	2.6
1	B	328	GLY	2.5
1	A	204	VAL	2.5
1	A	392	GLN	2.4
1	B	228	GLN	2.4
1	A	230	GLU	2.3
1	B	437	ASN	2.3
1	A	421	ASN	2.2
1	A	274	HIS	2.1
1	B	370	VAL	2.1
1	A	321	ILE	2.1
1	B	207	ASP	2.0
1	B	374	PRO	2.0
1	A	229	GLY	2.0
1	B	438	ASP	2.0

6.2 Non-standard residues in protein, DNA, RNA chains [i](#)

There are no non-standard protein/DNA/RNA residues in this entry.

6.3 Carbohydrates [i](#)

There are no oligosaccharides in this entry.

6.4 Ligands [i](#)

In the following table, the Atoms column lists the number of modelled atoms in the group and the number defined in the chemical component dictionary. The B-factors column lists the minimum, median, 95th percentile and maximum values of B factors of atoms in the group. The column labelled 'Q< 0.9' lists the number of atoms with occupancy less than 0.9.

Mol	Type	Chain	Res	Atoms	RSCC	RSR	B-factors(Å ²)	Q<0.9
5	TLA	A	507	10/10	0.56	0.17	73,78,85,89	0
3	EDO	A	517	4/4	0.70	0.19	46,49,52,52	0
4	DMS	A	506	4/4	0.72	0.24	60,67,69,72	0
3	EDO	A	504	4/4	0.72	0.16	43,44,50,55	0

Continued on next page...

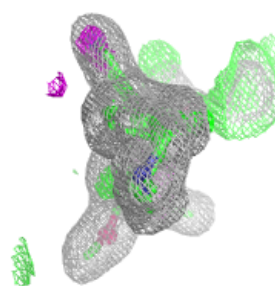
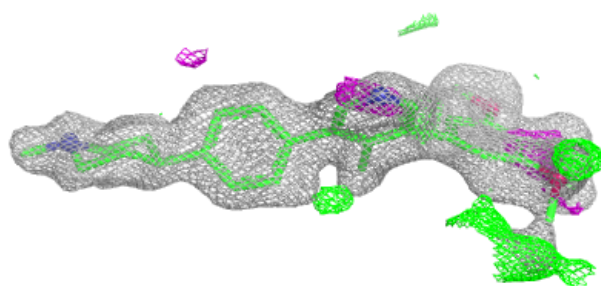
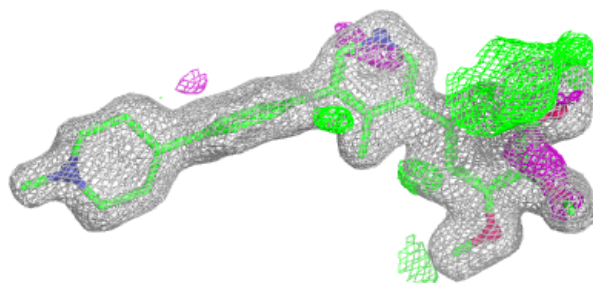
Continued from previous page...

Mol	Type	Chain	Res	Atoms	RSCC	RSR	B-factors(Å ²)	Q<0.9
4	DMS	B	504	4/4	0.73	0.19	69,70,75,76	0
3	EDO	B	509	4/4	0.73	0.20	32,40,41,42	0
3	EDO	A	514	4/4	0.77	0.19	67,68,69,74	0
3	EDO	B	510	4/4	0.84	0.14	45,45,46,48	0
3	EDO	A	516	4/4	0.84	0.14	51,51,53,61	0
2	LU8	A	508	32/32	0.85	0.13	22,27,40,49	0
7	XEA	B	505[A]	7/7	0.85	0.19	15,17,19,22	7
7	XEA	B	505[B]	7/7	0.85	0.19	16,17,20,23	7
6	SO4	B	506	5/5	0.86	0.10	52,52,59,63	5
6	SO4	B	507	5/5	0.88	0.12	19,26,29,30	5
3	EDO	A	503	4/4	0.88	0.14	24,27,29,33	0
3	EDO	A	515	4/4	0.88	0.14	37,44,45,54	0
3	EDO	B	503	4/4	0.90	0.12	26,27,29,41	0
3	EDO	A	502	4/4	0.91	0.17	17,32,33,50	0
3	EDO	B	508	4/4	0.92	0.12	19,28,30,32	0
3	EDO	A	505	4/4	0.93	0.12	20,28,32,35	0
2	LU8	A	509	32/32	0.93	0.11	19,23,44,57	0
2	LU8	A	501[A]	32/32	0.95	0.10	15,17,37,41	32
2	LU8	A	501[B]	32/32	0.95	0.10	12,14,25,29	32
3	EDO	A	513	4/4	0.95	0.09	18,29,34,43	0
2	LU8	B	501	32/32	0.96	0.08	15,17,41,45	0
6	SO4	A	510	5/5	0.97	0.20	11,12,13,15	5
6	SO4	A	512	5/5	0.97	0.06	19,21,23,24	5
6	SO4	A	511	5/5	0.98	0.07	18,22,29,33	0
6	SO4	B	502	5/5	0.98	0.05	23,24,26,26	0

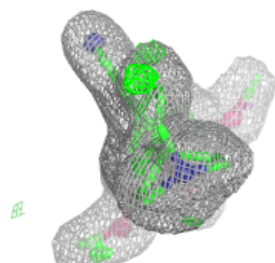
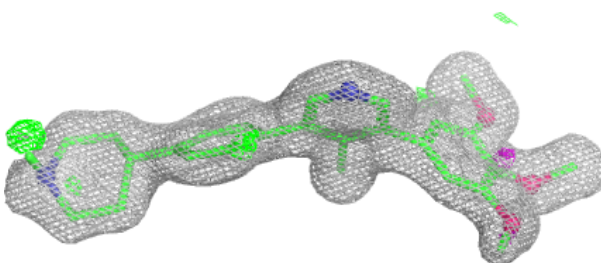
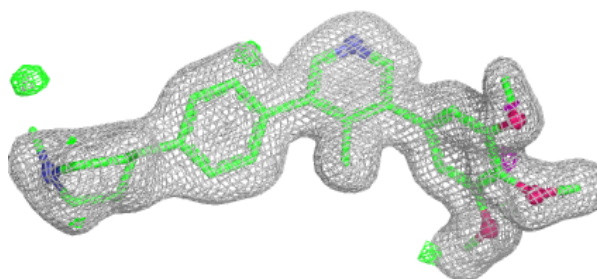
The following is a graphical depiction of the model fit to experimental electron density of all instances of the Ligand of Interest. In addition, ligands with molecular weight > 250 and outliers as shown on the geometry validation Tables will also be included. Each fit is shown from different orientation to approximate a three-dimensional view.

Electron density around LU8 A 508:

$2mF_o-DF_c$ (at 0.7 rmsd) in gray
 mF_o-DF_c (at 3 rmsd) in purple (negative)
and green (positive)

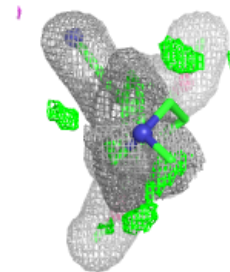
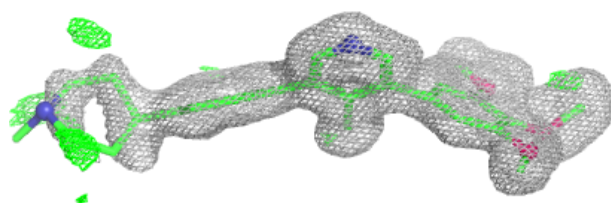
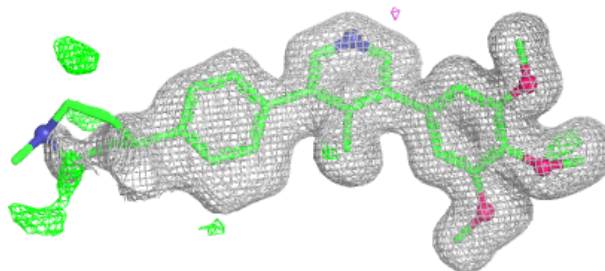
**Electron density around LU8 A 509:**

$2mF_o-DF_c$ (at 0.7 rmsd) in gray
 mF_o-DF_c (at 3 rmsd) in purple (negative)
and green (positive)

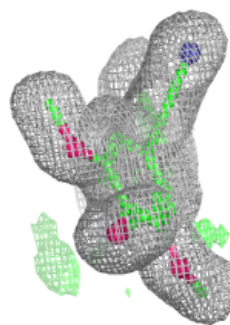
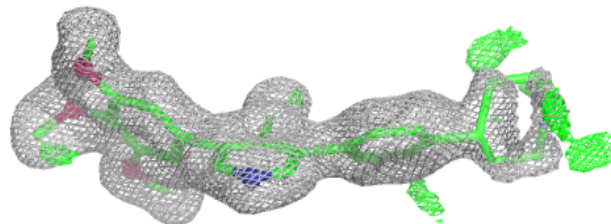
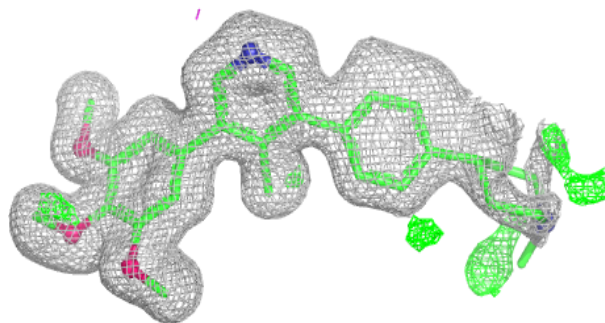


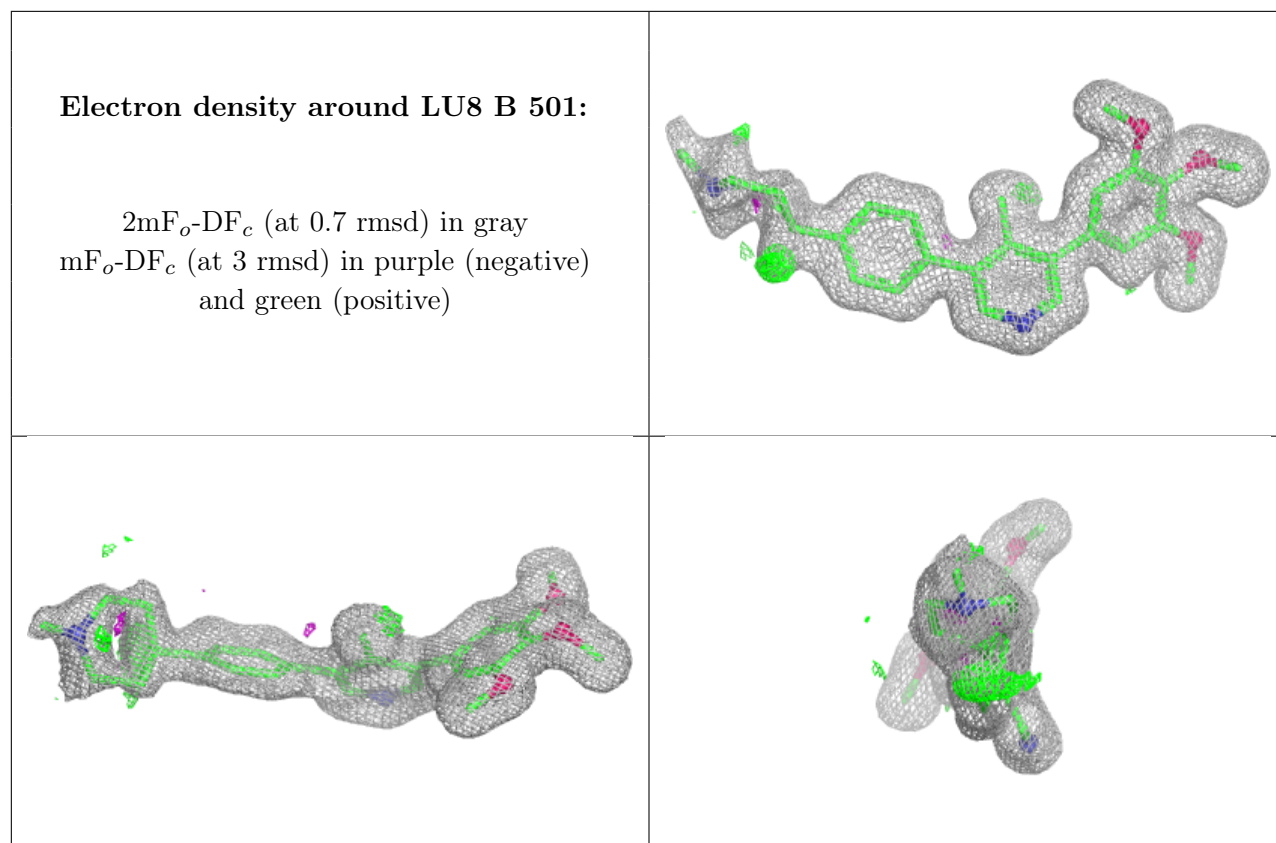
Electron density around LU8 A 501 (A):

$2mF_o-DF_c$ (at 0.7 rmsd) in gray
 mF_o-DF_c (at 3 rmsd) in purple (negative)
and green (positive)

**Electron density around LU8 A 501 (B):**

$2mF_o-DF_c$ (at 0.7 rmsd) in gray
 mF_o-DF_c (at 3 rmsd) in purple (negative)
and green (positive)





6.5 Other polymers [i](#)

There are no such residues in this entry.