



# Full wwPDB X-ray Structure Validation Report ⓘ

Mar 6, 2026 – 02:53 AM UTC

PDB ID : 6GE4 / pdb\_00006ge4  
Title : TEAD4 (216-434);E263A COMPLEXED WITH YAP PEPTIDE (60-100) AND MYRISTOATE (COVALENTLY BOUND) AT 1.97Å (P41212 CRYSTAL FORM); MYRISTOYLATION WAS DONE BY ADDING MYR-COA  
Authors : Kallen, J.  
Deposited on : 2018-04-25  
Resolution : 1.97 Å(reported)

This is a Full wwPDB X-ray Structure Validation Report for a publicly released PDB entry.

We welcome your comments at [validation@mail.wwpdb.org](mailto:validation@mail.wwpdb.org)

A user guide is available at

<https://www.wwpdb.org/validation/2017/XrayValidationReportHelp>

with specific help available everywhere you see the ⓘ symbol.

The types of validation reports are described at

<http://www.wwpdb.org/validation/2017/FAQs#types>.

---

The following versions of software and data (see [references ⓘ](#)) were used in the production of this report:

MolProbity : 4-5-2 with Phenix2.0  
Mogul : 2022.3.0, CSD as543be (2022)  
Xtrriage (Phenix) : 2.0  
EDS : 3.0  
Percentile statistics : 20250101.v01 (using entries in the PDB archive January 1st 2025)  
CCP4 : 9.0.010 (Gargrove)  
Density-Fitness : 1.0.12  
Ideal geometry (proteins) : Engh & Huber (2001)  
Ideal geometry (DNA, RNA) : Parkinson et al. (1996)  
Validation Pipeline (wwPDB-VP) : 2.49

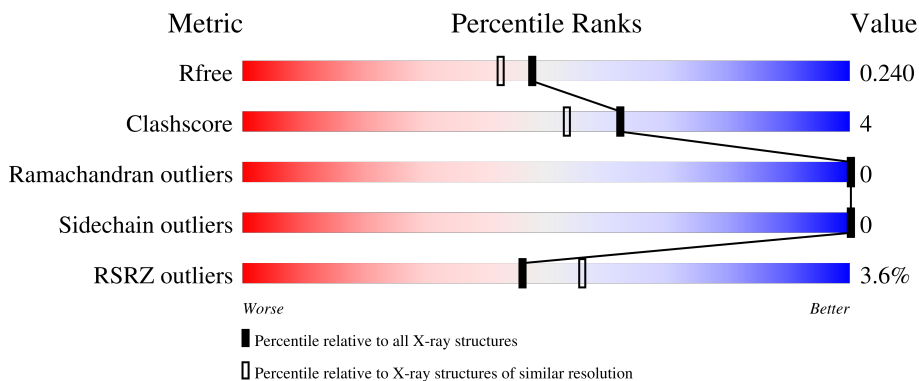
# 1 Overall quality at a glance

The following experimental techniques were used to determine the structure:

*X-RAY DIFFRACTION*

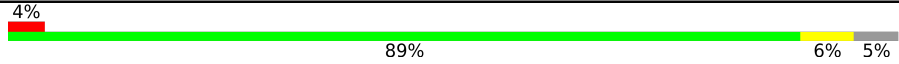

The reported resolution of this entry is 1.97 Å.

Percentile scores (ranging between 0-100) for global validation metrics of the entry are shown in the following graphic. The table shows the number of entries on which the scores are based.



Metric	Whole archive (#Entries)	Similar resolution (#Entries, resolution range(Å))
$R_{free}$	180053	1506 (1.98-1.98)
Clashscore	190562	1534 (1.98-1.98)
Ramachandran outliers	187476	1518 (1.98-1.98)
Sidechain outliers	187428	1518 (1.98-1.98)
RSRZ outliers	180081	1506 (1.98-1.98)

The table below summarises the geometric issues observed across the polymeric chains and their fit to the electron density. The red, orange, yellow and green segments of the lower bar indicate the fraction of residues that contain outliers for  $\geq 3$ , 2, 1 and 0 types of geometric quality criteria respectively. A grey segment represents the fraction of residues that are not modelled. The numeric value for each fraction is indicated below the corresponding segment, with a dot representing fractions  $\leq 5\%$ . The upper red bar (where present) indicates the fraction of residues that have poor fit to the electron density. The numeric value is given above the bar.

Mol	Chain	Length	Quality of chain
1	A	219	 4% 89% 6% 5%
2	L	41	 88% 10% .

## 2 Entry composition [i](#)

There are 4 unique types of molecules in this entry. The entry contains 2238 atoms, of which 0 are hydrogens and 0 are deuteriums.

In the tables below, the ZeroOcc column contains the number of atoms modelled with zero occupancy, the AltConf column contains the number of residues with at least one atom in alternate conformation and the Trace column contains the number of residues modelled with at most 2 atoms.

- Molecule 1 is a protein called Transcriptional enhancer factor TEF-3.

Mol	Chain	Residues	Atoms					ZeroOcc	AltConf	Trace
			Total	C	N	O	S			
1	A	208	1752	1132	288	323	9	0	9	0

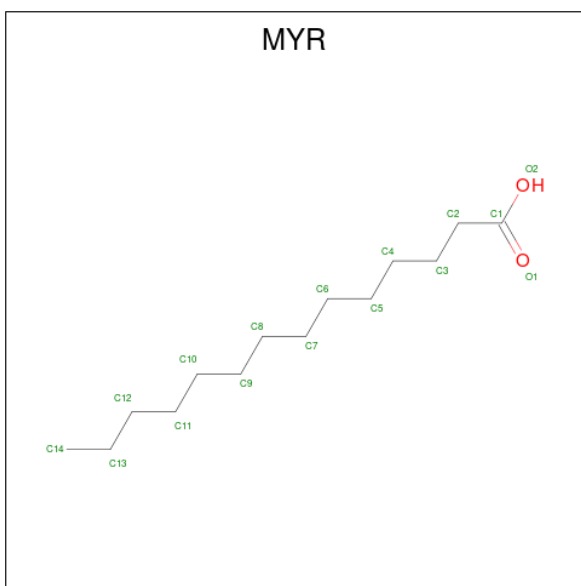
There is a discrepancy between the modelled and reference sequences:

Chain	Residue	Modelled	Actual	Comment	Reference
A	263	ALA	GLU	engineered mutation	UNP Q15561

- Molecule 2 is a protein called Transcriptional coactivator YAP1.

Mol	Chain	Residues	Atoms					ZeroOcc	AltConf	Trace
			Total	C	N	O	S			
2	L	40	324	207	56	59	2	0	1	0

- Molecule 3 is MYRISTIC ACID (CCD ID: MYR) (formula: C<sub>14</sub>H<sub>28</sub>O<sub>2</sub>).



Mol	Chain	Residues	Atoms			ZeroOcc	AltConf
3	A	1	Total	C	O	0	0
			15	14	1		

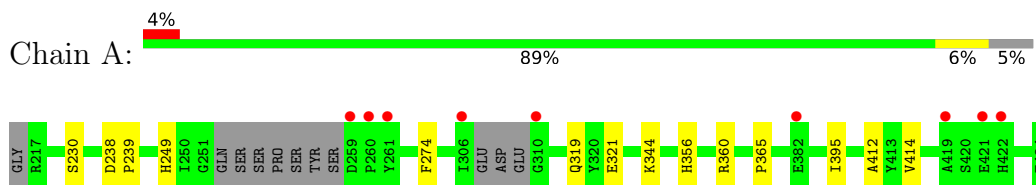
- Molecule 4 is water.

Mol	Chain	Residues	Atoms		ZeroOcc	AltConf
4	A	119	Total	O	0	0
			119	119		
4	L	28	Total	O	0	0
			28	28		

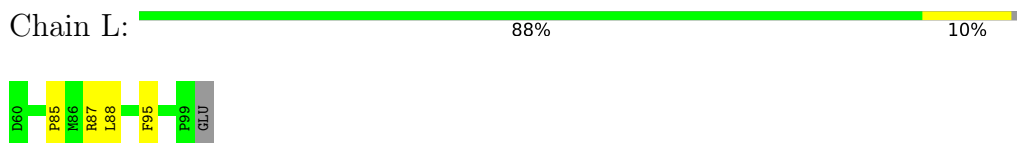
### 3 Residue-property plots [i](#)

These plots are drawn for all protein, RNA, DNA and oligosaccharide chains in the entry. The first graphic for a chain summarises the proportions of the various outlier classes displayed in the second graphic. The second graphic shows the sequence view annotated by issues in geometry and electron density. Residues are color-coded according to the number of geometric quality criteria for which they contain at least one outlier: green = 0, yellow = 1, orange = 2 and red = 3 or more. A red dot above a residue indicates a poor fit to the electron density ( $RSRZ > 2$ ). Stretches of 2 or more consecutive residues without any outlier are shown as a green connector. Residues present in the sample, but not in the model, are shown in grey.

- Molecule 1: Transcriptional enhancer factor TEF-3



- Molecule 2: Transcriptional coactivator YAP1



## 4 Data and refinement statistics

Property	Value	Source
Space group	P 41 21 2	Depositor
Cell constants a, b, c, $\alpha$ , $\beta$ , $\gamma$	59.03Å 59.03Å 159.13Å 90.00° 90.00° 90.00°	Depositor
Resolution (Å)	19.73 – 1.97 19.73 – 1.97	Depositor EDS
% Data completeness (in resolution range)	99.8 (19.73-1.97) 99.8 (19.73-1.97)	Depositor EDS
$R_{merge}$	0.09	Depositor
$R_{sym}$	(Not available)	Depositor
$\langle I/\sigma(I) \rangle$ <sup>1</sup>	3.38 (at 1.97Å)	Xtrriage
Refinement program	REFMAC	Depositor
R, $R_{free}$	0.224 , 0.241 0.223 , 0.240	Depositor DCC
$R_{free}$ test set	1036 reflections (5.00%)	wwPDB-VP
Wilson B-factor (Å <sup>2</sup> )	31.4	Xtrriage
Anisotropy	0.036	Xtrriage
Bulk solvent $k_{sol}$ (e/Å <sup>3</sup> ), $B_{sol}$ (Å <sup>2</sup> )	0.32 , 20.3	EDS
L-test for twinning <sup>2</sup>	$\langle  L  \rangle = 0.46$ , $\langle L^2 \rangle = 0.28$	Xtrriage
Estimated twinning fraction	No twinning to report.	Xtrriage
$F_o, F_c$ correlation	0.94	EDS
Total number of atoms	2238	wwPDB-VP
Average B, all atoms (Å <sup>2</sup> )	34.0	wwPDB-VP

Xtrriage's analysis on translational NCS is as follows: *The largest off-origin peak in the Patterson function is 5.94% of the height of the origin peak. No significant pseudotranslation is detected.*

<sup>1</sup>Intensities estimated from amplitudes.

<sup>2</sup>Theoretical values of  $\langle |L| \rangle$ ,  $\langle L^2 \rangle$  for acentric reflections are 0.5, 0.333 respectively for untwinned datasets, and 0.375, 0.2 for perfectly twinned datasets.

## 5 Model quality [i](#)

### 5.1 Standard geometry [i](#)

Bond lengths and bond angles in the following residue types are not validated in this section: MYR

The Z score for a bond length (or angle) is the number of standard deviations the observed value is removed from the expected value. A bond length (or angle) with  $|Z| > 5$  is considered an outlier worth inspection. RMSZ is the root-mean-square of all Z scores of the bond lengths (or angles).

Mol	Chain	Bond lengths		Bond angles	
		RMSZ	# Z  >5	RMSZ	# Z  >5
1	A	0.38	0/1822	0.67	0/2459
2	L	0.45	0/335	0.76	0/455
All	All	0.39	0/2157	0.69	0/2914

There are no bond length outliers.

There are no bond angle outliers.

There are no chirality outliers.

There are no planarity outliers.

### 5.2 Too-close contacts [i](#)

In the following table, the Non-H and H(model) columns list the number of non-hydrogen atoms and hydrogen atoms in the chain respectively. The H(added) column lists the number of hydrogen atoms added and optimized by MolProbity. The Clashes column lists the number of clashes within the asymmetric unit, whereas Symm-Clashes lists symmetry-related clashes.

Mol	Chain	Non-H	H(model)	H(added)	Clashes	Symm-Clashes
1	A	1752	0	1728	10	0
2	L	324	0	331	9	0
3	A	15	0	27	1	0
4	A	119	0	0	0	0
4	L	28	0	0	0	1
All	All	2238	0	2086	17	1

The all-atom clashscore is defined as the number of clashes found per 1000 atoms (including hydrogen atoms). The all-atom clashscore for this structure is 4.

All (17) close contacts within the same asymmetric unit are listed below, sorted by their clash magnitude.

Atom-1	Atom-2	Interatomic distance (Å)	Clash overlap (Å)
2:L:87[B]:ARG:CG	2:L:87[B]:ARG:HH11	1.66	1.06
2:L:87[B]:ARG:HH11	2:L:87[B]:ARG:HG3	1.34	0.89
2:L:87[B]:ARG:HH11	2:L:87[B]:ARG:HG2	1.43	0.83
2:L:87[B]:ARG:CG	2:L:87[B]:ARG:NH1	2.39	0.72
2:L:87[B]:ARG:HG3	2:L:87[B]:ARG:NH1	2.05	0.68
2:L:87[B]:ARG:HG2	2:L:87[B]:ARG:NH1	2.14	0.59
1:A:319:GLN:HG2	1:A:360:ARG:HG3	1.88	0.56
1:A:238:ASP:HB2	1:A:239:PRO:CD	2.36	0.55
1:A:395:ILE:HD13	3:A:501:MYR:H62	1.91	0.51
1:A:230:SER:HB3	1:A:249:HIS:HD2	1.76	0.50
2:L:85:PRO:HD2	2:L:88:LEU:HD12	1.93	0.50
1:A:414[B]:VAL:HG21	2:L:95:PHE:HZ	1.78	0.49
1:A:414[B]:VAL:HG21	2:L:95:PHE:CZ	2.51	0.46
1:A:238:ASP:HB2	1:A:239:PRO:HD2	1.97	0.45
1:A:321[B]:GLU:HG3	1:A:356:HIS:CD2	2.51	0.44
1:A:274:PHE:CZ	1:A:412:ALA:HB1	2.56	0.41
1:A:344:LYS:NZ	1:A:365:PRO:O	2.52	0.41

All (1) symmetry-related close contacts are listed below. The label for Atom-2 includes the symmetry operator and encoded unit-cell translations to be applied.

Atom-1	Atom-2	Interatomic distance (Å)	Clash overlap (Å)
4:L:217:HOH:O	4:L:217:HOH:O[7_555]	1.98	0.22

## 5.3 Torsion angles [i](#)

### 5.3.1 Protein backbone [i](#)

In the following table, the Percentiles column shows the percent Ramachandran outliers of the chain as a percentile score with respect to all X-ray entries followed by that with respect to entries of similar resolution.

The Analysed column shows the number of residues for which the backbone conformation was analysed, and the total number of residues.

Mol	Chain	Analysed	Favoured	Allowed	Outliers	Percentiles	
1	A	211/219 (96%)	205 (97%)	6 (3%)	0	100	100
2	L	39/41 (95%)	37 (95%)	2 (5%)	0	100	100
All	All	250/260 (96%)	242 (97%)	8 (3%)	0	100	100

There are no Ramachandran outliers to report.

### 5.3.2 Protein sidechains [i](#)

In the following table, the Percentiles column shows the percent sidechain outliers of the chain as a percentile score with respect to all X-ray entries followed by that with respect to entries of similar resolution.

The Analysed column shows the number of residues for which the sidechain conformation was analysed, and the total number of residues.

Mol	Chain	Analysed	Rotameric	Outliers	Percentiles	
1	A	198/199 (100%)	198 (100%)	0	100	100
2	L	38/38 (100%)	38 (100%)	0	100	100
All	All	236/237 (100%)	236 (100%)	0	100	100

There are no protein residues with a non-rotameric sidechain to report.

Sometimes sidechains can be flipped to improve hydrogen bonding and reduce clashes. All (7) such sidechains are listed below:

Mol	Chain	Res	Type
1	A	235	GLN
1	A	249	HIS
1	A	303	ASN
1	A	305	ASN
1	A	340	GLN
1	A	427	HIS
2	L	74	ASN

### 5.3.3 RNA [i](#)

There are no RNA molecules in this entry.

## 5.4 Non-standard residues in protein, DNA, RNA chains [i](#)

There are no non-standard protein/DNA/RNA residues in this entry.

## 5.5 Carbohydrates [i](#)

There are no oligosaccharides in this entry.

## 5.6 Ligand geometry

1 ligand is modelled in this entry.

In the following table, the Counts columns list the number of bonds (or angles) for which Mogul statistics could be retrieved, the number of bonds (or angles) that are observed in the model and the number of bonds (or angles) that are defined in the Chemical Component Dictionary. The Link column lists molecule types, if any, to which the group is linked. The Z score for a bond length (or angle) is the number of standard deviations the observed value is removed from the expected value. A bond length (or angle) with  $|Z| > 2$  is considered an outlier worth inspection. RMSZ is the root-mean-square of all Z scores of the bond lengths (or angles).

Mol	Type	Chain	Res	Link	Bond lengths			Bond angles		
					Counts	RMSZ	# Z  > 2	Counts	RMSZ	# Z  > 2
3	MYR	A	501	1	13,14,15	0.33	0	12,13,15	0.90	0

In the following table, the Chirals column lists the number of chiral outliers, the number of chiral centers analysed, the number of these observed in the model and the number defined in the Chemical Component Dictionary. Similar counts are reported in the Torsion and Rings columns. '-' means no outliers of that kind were identified.

Mol	Type	Chain	Res	Link	Chirals	Torsions	Rings
3	MYR	A	501	1	-	5/12/12/13	-

There are no bond length outliers.

There are no bond angle outliers.

There are no chirality outliers.

All (5) torsion outliers are listed below:

Mol	Chain	Res	Type	Atoms
3	A	501	MYR	C4-C5-C6-C7
3	A	501	MYR	C10-C11-C12-C13
3	A	501	MYR	C6-C7-C8-C9
3	A	501	MYR	C9-C10-C11-C12
3	A	501	MYR	C1-C2-C3-C4

There are no ring outliers.

1 monomer is involved in 1 short contact:

Mol	Chain	Res	Type	Clashes	Symm-Clashes
3	A	501	MYR	1	0

## 5.7 Other polymers [i](#)

There are no such residues in this entry.

## 5.8 Polymer linkage issues [i](#)

There are no chain breaks in this entry.

## 6 Fit of model and data [i](#)

### 6.1 Protein, DNA and RNA chains [i](#)

In the following table, the column labelled ‘#RSRZ> 2’ contains the number (and percentage) of RSRZ outliers, followed by percent RSRZ outliers for the chain as percentile scores relative to all X-ray entries and entries of similar resolution. The OWAB column contains the minimum, median, 95<sup>th</sup> percentile and maximum values of the occupancy-weighted average B-factor per residue. The column labelled ‘Q< 0.9’ lists the number of (and percentage) of residues with an average occupancy less than 0.9.

Mol	Chain	Analysed	<RSRZ>	#RSRZ>2	OWAB(Å <sup>2</sup> )	Q<0.9
1	A	208/219 (94%)	0.33	9 (4%) 40 49	14, 30, 60, 78	9 (4%)
2	L	40/41 (97%)	0.28	0 100 100	20, 32, 43, 48	1 (2%)
All	All	248/260 (95%)	0.32	9 (3%) 46 56	14, 31, 55, 78	10 (4%)

All (9) RSRZ outliers are listed below:

Mol	Chain	Res	Type	RSRZ
1	A	261	TYR	5.0
1	A	422	HIS	4.7
1	A	306	ILE	3.9
1	A	382	GLU	2.5
1	A	310	GLY	2.4
1	A	260	PRO	2.3
1	A	421	GLU	2.3
1	A	419	ALA	2.2
1	A	259	ASP	2.2

### 6.2 Non-standard residues in protein, DNA, RNA chains [i](#)

There are no non-standard protein/DNA/RNA residues in this entry.

### 6.3 Carbohydrates [i](#)

There are no oligosaccharides in this entry.

### 6.4 Ligands [i](#)

In the following table, the Atoms column lists the number of modelled atoms in the group and the number defined in the chemical component dictionary. The B-factors column lists the minimum,

median, 95<sup>th</sup> percentile and maximum values of B factors of atoms in the group. The column labelled 'Q< 0.9' lists the number of atoms with occupancy less than 0.9.

Mol	Type	Chain	Res	Atoms	RSCC	RSR	B-factors(Å <sup>2</sup> )	Q<0.9
3	MYR	A	501	15/16	0.76	0.15	37,39,42,44	0

## 6.5 Other polymers [i](#)

There are no such residues in this entry.