



Full wwPDB X-ray Structure Validation Report ⓘ

Jun 11, 2024 – 05:48 PM EDT

PDB ID : 6MVU
Title : Structure of a bacterial ALDH16 active site mutant C295A complexed with p-nitrophenylacetate
Authors : Tanner, J.J.; Liu, L.
Deposited on : 2018-10-28
Resolution : 1.49 Å(reported)

This is a Full wwPDB X-ray Structure Validation Report for a publicly released PDB entry.

We welcome your comments at validation@mail.wwpdb.org

A user guide is available at

<https://www.wwpdb.org/validation/2017/XrayValidationReportHelp>

with specific help available everywhere you see the ⓘ symbol.

The types of validation reports are described at

<http://www.wwpdb.org/validation/2017/FAQs#types>.

The following versions of software and data (see [references ⓘ](#)) were used in the production of this report:

MolProbity : 4.02b-467
Mogul : 1.8.5 (274361), CSD as541be (2020)
Xtriage (Phenix) : 1.13
EDS : 2.36.2
Percentile statistics : 20191225.v01 (using entries in the PDB archive December 25th 2019)
Refmac : 5.8.0158
CCP4 : 7.0.044 (Gargrove)
Ideal geometry (proteins) : Engh & Huber (2001)
Ideal geometry (DNA, RNA) : Parkinson et al. (1996)
Validation Pipeline (wwPDB-VP) : 2.36.2

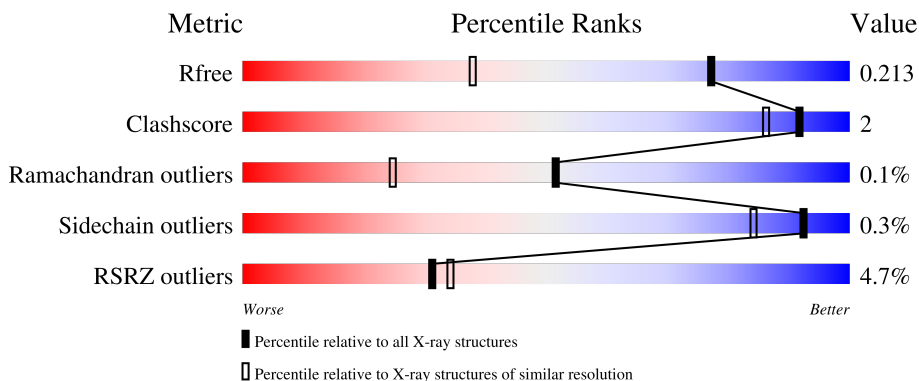
1 Overall quality at a glance

The following experimental techniques were used to determine the structure:

X-RAY DIFFRACTION

The reported resolution of this entry is 1.49 Å.

Percentile scores (ranging between 0-100) for global validation metrics of the entry are shown in the following graphic. The table shows the number of entries on which the scores are based.



Metric	Whole archive (#Entries)	Similar resolution (#Entries, resolution range(Å))
R_{free}	130704	4690 (1.50-1.46)
Clashscore	141614	4955 (1.50-1.46)
Ramachandran outliers	138981	4846 (1.50-1.46)
Sidechain outliers	138945	4844 (1.50-1.46)
RSRZ outliers	127900	4614 (1.50-1.46)

The table below summarises the geometric issues observed across the polymeric chains and their fit to the electron density. The red, orange, yellow and green segments of the lower bar indicate the fraction of residues that contain outliers for ≥ 3 , 2, 1 and 0 types of geometric quality criteria respectively. A grey segment represents the fraction of residues that are not modelled. The numeric value for each fraction is indicated below the corresponding segment, with a dot representing fractions $\leq 5\%$. The upper red bar (where present) indicates the fraction of residues that have poor fit to the electron density. The numeric value is given above the bar.

Mol	Chain	Length	Quality of chain
1	A	767	 5% 94%
1	B	767	 4% 95%

2 Entry composition [i](#)

There are 5 unique types of molecules in this entry. The entry contains 12481 atoms, of which 0 are hydrogens and 0 are deuteriums.

In the tables below, the ZeroOcc column contains the number of atoms modelled with zero occupancy, the AltConf column contains the number of residues with at least one atom in alternate conformation and the Trace column contains the number of residues modelled with at most 2 atoms.

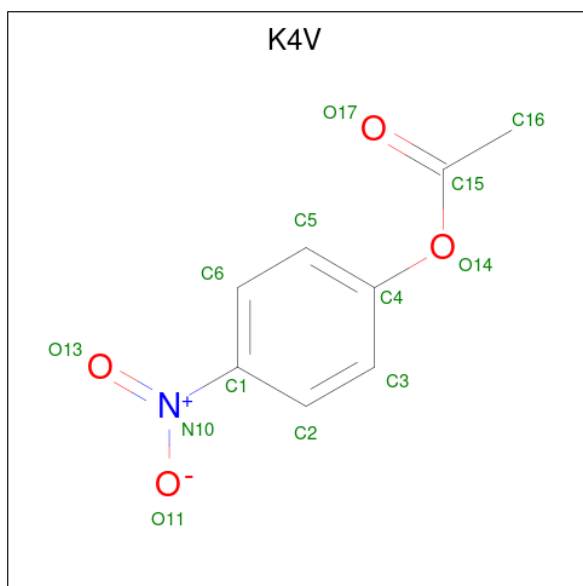
- Molecule 1 is a protein called Aldehyde dehydrogenase.

Mol	Chain	Residues	Atoms					ZeroOcc	AltConf	Trace
			Total	C	N	O	S			
1	A	752	Total 5588	C 3541	N 982	O 1040	S 25	0	8	0
1	B	752	Total 5577	C 3533	N 976	O 1043	S 25	0	8	0

There are 4 discrepancies between the modelled and reference sequences:

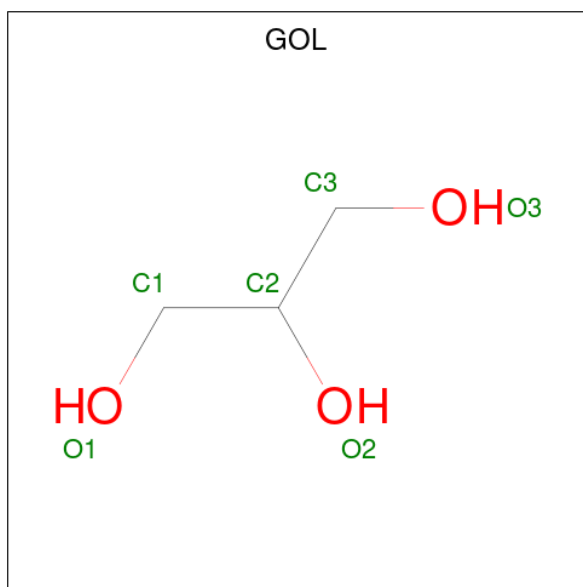
Chain	Residue	Modelled	Actual	Comment	Reference
A	0	SER	-	expression tag	UNP A0A0Q3EUQ3
A	295	ALA	CYS	engineered mutation	UNP A0A0Q3EUQ3
B	0	SER	-	expression tag	UNP A0A0Q3EUQ3
B	295	ALA	CYS	engineered mutation	UNP A0A0Q3EUQ3

- Molecule 2 is 4-nitrophenyl acetate (three-letter code: K4V) (formula: C₈H₇NO₄).



Mol	Chain	Residues	Atoms				ZeroOcc	AltConf
2	A	1	Total	C	N	O	0	0
			13	8	1	4		
2	B	1	Total	C	N	O	0	0
			13	8	1	4		

- Molecule 3 is GLYCEROL (three-letter code: GOL) (formula: C₃H₈O₃).



Mol	Chain	Residues	Atoms			ZeroOcc	AltConf
3	A	1	Total	C	O	0	1
			12	6	6		
3	B	1	Total	C	O	0	1
			12	6	6		

- Molecule 4 is SULFATE ION (three-letter code: SO4) (formula: O₄S).



Mol	Chain	Residues	Atoms			ZeroOcc	AltConf
4	A	1	Total	O	S	0	0
			5	4	1		
4	A	1	Total	O	S	0	0
			5	4	1		
4	A	1	Total	O	S	0	0
			5	4	1		
4	A	1	Total	O	S	0	0
			5	4	1		
4	B	1	Total	O	S	0	0
			5	4	1		
4	B	1	Total	O	S	0	0
			5	4	1		
4	B	1	Total	O	S	0	0
			5	4	1		

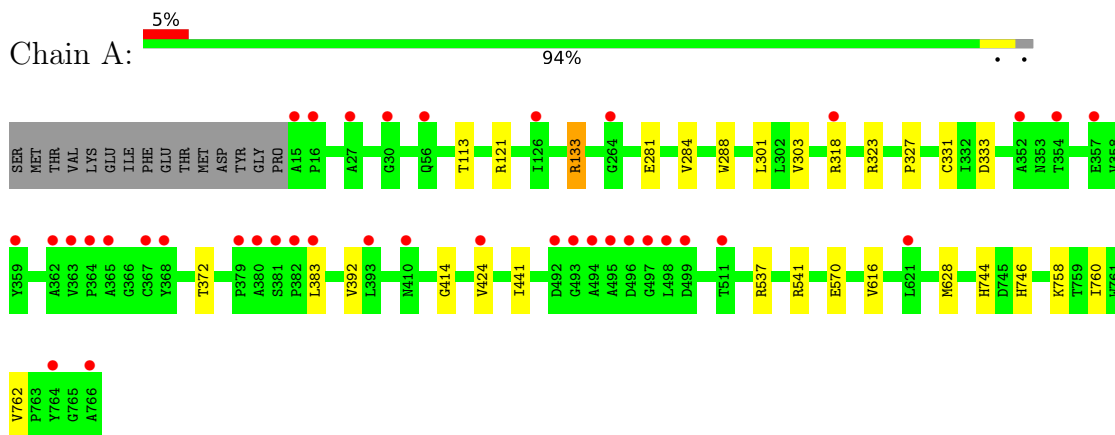
- Molecule 5 is water.

Mol	Chain	Residues	Atoms		ZeroOcc	AltConf
5	A	597	Total	O	0	5
			602	602		
5	B	627	Total	O	0	4
			629	629		

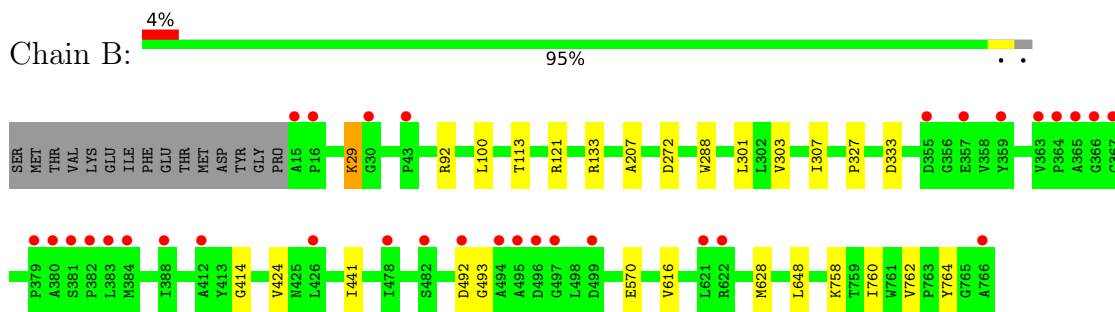
3 Residue-property plots [i](#)

These plots are drawn for all protein, RNA, DNA and oligosaccharide chains in the entry. The first graphic for a chain summarises the proportions of the various outlier classes displayed in the second graphic. The second graphic shows the sequence view annotated by issues in geometry and electron density. Residues are color-coded according to the number of geometric quality criteria for which they contain at least one outlier: green = 0, yellow = 1, orange = 2 and red = 3 or more. A red dot above a residue indicates a poor fit to the electron density ($RSRZ > 2$). Stretches of 2 or more consecutive residues without any outlier are shown as a green connector. Residues present in the sample, but not in the model, are shown in grey.

- Molecule 1: Aldehyde dehydrogenase



- Molecule 1: Aldehyde dehydrogenase



4 Data and refinement statistics

Property	Value	Source
Space group	P 21 21 21	Depositor
Cell constants a, b, c, α , β , γ	79.38Å 119.62Å 158.67Å 90.00° 90.00° 90.00°	Depositor
Resolution (Å)	95.52 – 1.49 95.52 – 1.49	Depositor EDS
% Data completeness (in resolution range)	98.2 (95.52-1.49) 98.7 (95.52-1.49)	Depositor EDS
R_{merge}	0.13	Depositor
R_{sym}	(Not available)	Depositor
$\langle I/\sigma(I) \rangle$ ¹	1.50 (at 1.49Å)	Xtrriage
Refinement program	PHENIX	Depositor
R, R_{free}	0.192 , 0.216 0.187 , 0.213	Depositor DCC
R_{free} test set	12136 reflections (4.98%)	wwPDB-VP
Wilson B-factor (Å ²)	17.4	Xtrriage
Anisotropy	0.110	Xtrriage
Bulk solvent k_{sol} (e/Å ³), B_{sol} (Å ²)	0.38 , 46.9	EDS
L-test for twinning ²	$\langle L \rangle = 0.52$, $\langle L^2 \rangle = 0.36$	Xtrriage
Estimated twinning fraction	No twinning to report.	Xtrriage
F_o, F_c correlation	0.97	EDS
Total number of atoms	12481	wwPDB-VP
Average B, all atoms (Å ²)	21.0	wwPDB-VP

Xtrriage's analysis on translational NCS is as follows: *The analyses of the Patterson function reveals a significant off-origin peak that is 47.39 % of the origin peak, indicating pseudo-translational symmetry. The chance of finding a peak of this or larger height randomly in a structure without pseudo-translational symmetry is equal to 9.9910e-05. The detected translational NCS is most likely also responsible for the elevated intensity ratio.*

¹Intensities estimated from amplitudes.

²Theoretical values of $\langle |L| \rangle$, $\langle L^2 \rangle$ for acentric reflections are 0.5, 0.333 respectively for untwinned datasets, and 0.375, 0.2 for perfectly twinned datasets.

5 Model quality

5.1 Standard geometry

Bond lengths and bond angles in the following residue types are not validated in this section: K4V, SO4, GOL

The Z score for a bond length (or angle) is the number of standard deviations the observed value is removed from the expected value. A bond length (or angle) with $|Z| > 5$ is considered an outlier worth inspection. RMSZ is the root-mean-square of all Z scores of the bond lengths (or angles).

Mol	Chain	Bond lengths		Bond angles	
		RMSZ	# Z >5	RMSZ	# Z >5
1	A	0.33	0/5732	0.54	0/7815
1	B	0.33	0/5721	0.54	0/7802
All	All	0.33	0/11453	0.54	0/15617

There are no bond length outliers.

There are no bond angle outliers.

There are no chirality outliers.

There are no planarity outliers.

5.2 Too-close contacts

In the following table, the Non-H and H(model) columns list the number of non-hydrogen atoms and hydrogen atoms in the chain respectively. The H(added) column lists the number of hydrogen atoms added and optimized by MolProbity. The Clashes column lists the number of clashes within the asymmetric unit, whereas Symm-Clashes lists symmetry-related clashes.

Mol	Chain	Non-H	H(model)	H(added)	Clashes	Symm-Clashes
1	A	5588	0	5564	22	0
1	B	5577	0	5538	18	0
2	A	13	0	0	0	0
2	B	13	0	0	0	0
3	A	12	0	16	1	0
3	B	12	0	16	2	0
4	A	20	0	0	0	0
4	B	15	0	0	0	0
5	A	602	0	0	2	0
5	B	629	0	0	2	0
All	All	12481	0	11134	35	0

The all-atom clashscore is defined as the number of clashes found per 1000 atoms (including hydrogen atoms). The all-atom clashscore for this structure is 2.

All (35) close contacts within the same asymmetric unit are listed below, sorted by their clash magnitude.

Atom-1	Atom-2	Interatomic distance (Å)	Clash overlap (Å)
1:A:133:ARG:HG2	5:A:1030:HOH:O	1.92	0.69
1:B:441:ILE:HD12	1:B:762:VAL:HG12	1.83	0.60
1:A:281:GLU:OE2	1:A:318:ARG:NH2	2.36	0.59
1:B:758:LYS:HD3	1:B:760:ILE:HD11	1.86	0.58
1:A:744:HIS:HD2	1:A:746:HIS:CD2	2.23	0.56
1:A:424:VAL:HB	1:B:424:VAL:HA	1.90	0.54
1:A:441:ILE:HD12	1:A:762:VAL:HG12	1.89	0.53
1:A:537:ARG:NH1	1:A:541:ARG:HH22	2.07	0.53
1:A:113:THR:HG23	1:A:327:PRO:HB2	1.91	0.51
1:B:121:ARG:NH2	1:B:333:ASP:OD1	2.37	0.51
1:A:570:GLU:OE2	1:B:92:ARG:NH2	2.41	0.50
1:A:616:VAL:HG11	1:B:628[B]:MET:SD	2.51	0.50
1:A:133:ARG:O	1:A:133:ARG:HG3	2.12	0.49
1:A:758:LYS:HD3	1:A:760:ILE:HD11	1.95	0.49
1:A:372:THR:HB	1:A:392:VAL:HG22	1.94	0.48
1:A:628[A]:MET:SD	1:B:764:TYR:CZ	3.07	0.47
1:B:492:ASP:OD1	1:B:493:GLY:N	2.48	0.46
1:A:628[B]:MET:SD	1:B:616:VAL:HG11	2.56	0.45
1:B:29:LYS:HD2	1:B:29:LYS:HA	1.58	0.45
1:A:383:LEU:HD12	1:A:383:LEU:HA	1.79	0.45
1:A:121:ARG:NH2	1:A:333:ASP:OD1	2.47	0.44
1:B:570:GLU:HG3	5:B:1238:HOH:O	2.17	0.44
1:B:288:TRP:CD1	3:B:802[B]:GOL:H31	2.54	0.43
1:A:744:HIS:HD2	1:A:746:HIS:CG	2.36	0.43
1:B:272:ASP:HA	1:B:307:ILE:HG12	2.01	0.43
1:A:284:VAL:HG21	1:A:318:ARG:HB3	2.01	0.43
1:A:323:ARG:HD3	1:A:331:CYS:O	2.18	0.43
1:B:113:THR:HG23	1:B:327:PRO:HB2	2.01	0.42
1:B:288:TRP:NE1	3:B:802[B]:GOL:H31	2.36	0.41
1:B:301:LEU:HG	1:B:303[A]:VAL:HG23	2.01	0.41
1:A:288:TRP:CD1	3:A:802[B]:GOL:H31	2.55	0.41
1:A:301:LEU:HG	1:A:303[A]:VAL:HG23	2.02	0.41
1:B:133:ARG:NH2	5:B:923:HOH:O	2.53	0.41
1:A:318:ARG:HG2	5:A:1204:HOH:O	2.20	0.41
1:B:100:LEU:HD12	1:B:207:ALA:HB2	2.02	0.40

There are no symmetry-related clashes.

5.3 Torsion angles [i](#)

5.3.1 Protein backbone [i](#)

In the following table, the Percentiles column shows the percent Ramachandran outliers of the chain as a percentile score with respect to all X-ray entries followed by that with respect to entries of similar resolution.

The Analysed column shows the number of residues for which the backbone conformation was analysed, and the total number of residues.

Mol	Chain	Analysed	Favoured	Allowed	Outliers	Percentiles	
1	A	758/767 (99%)	740 (98%)	17 (2%)	1 (0%)	51	25
1	B	758/767 (99%)	741 (98%)	16 (2%)	1 (0%)	51	25
All	All	1516/1534 (99%)	1481 (98%)	33 (2%)	2 (0%)	51	25

All (2) Ramachandran outliers are listed below:

Mol	Chain	Res	Type
1	A	414	GLY
1	B	414	GLY

5.3.2 Protein sidechains [i](#)

In the following table, the Percentiles column shows the percent sidechain outliers of the chain as a percentile score with respect to all X-ray entries followed by that with respect to entries of similar resolution.

The Analysed column shows the number of residues for which the sidechain conformation was analysed, and the total number of residues.

Mol	Chain	Analysed	Rotameric	Outliers	Percentiles	
1	A	552/563 (98%)	551 (100%)	1 (0%)	93	85
1	B	551/563 (98%)	549 (100%)	2 (0%)	91	81
All	All	1103/1126 (98%)	1100 (100%)	3 (0%)	92	84

All (3) residues with a non-rotameric sidechain are listed below:

Mol	Chain	Res	Type
1	A	133	ARG
1	B	29	LYS
1	B	648	LEU

Sometimes sidechains can be flipped to improve hydrogen bonding and reduce clashes. All (1) such sidechains are listed below:

Mol	Chain	Res	Type
1	A	744	HIS

5.3.3 RNA [i](#)

There are no RNA molecules in this entry.

5.4 Non-standard residues in protein, DNA, RNA chains [i](#)

There are no non-standard protein/DNA/RNA residues in this entry.

5.5 Carbohydrates [i](#)

There are no monosaccharides in this entry.

5.6 Ligand geometry [i](#)

13 ligands are modelled in this entry.

In the following table, the Counts columns list the number of bonds (or angles) for which Mogul statistics could be retrieved, the number of bonds (or angles) that are observed in the model and the number of bonds (or angles) that are defined in the Chemical Component Dictionary. The Link column lists molecule types, if any, to which the group is linked. The Z score for a bond length (or angle) is the number of standard deviations the observed value is removed from the expected value. A bond length (or angle) with $|Z| > 2$ is considered an outlier worth inspection. RMSZ is the root-mean-square of all Z scores of the bond lengths (or angles).

Mol	Type	Chain	Res	Link	Bond lengths			Bond angles		
					Counts	RMSZ	$\# Z > 2$	Counts	RMSZ	$\# Z > 2$
3	GOL	B	802[B]	-	5,5,5	0.94	0	5,5,5	0.78	0
3	GOL	A	802[B]	-	5,5,5	0.96	0	5,5,5	0.77	0
3	GOL	B	802[A]	-	5,5,5	0.97	0	5,5,5	0.86	0
4	SO4	A	803	-	4,4,4	0.14	0	6,6,6	0.16	0
4	SO4	B	804	-	4,4,4	0.15	0	6,6,6	0.19	0
4	SO4	B	805	-	4,4,4	0.12	0	6,6,6	0.21	0
4	SO4	A	804	-	4,4,4	0.14	0	6,6,6	0.18	0
4	SO4	A	805	-	4,4,4	0.12	0	6,6,6	0.19	0
3	GOL	A	802[A]	-	5,5,5	0.95	0	5,5,5	0.91	0
4	SO4	B	803	-	4,4,4	0.15	0	6,6,6	0.15	0
2	K4V	A	801	-	12,13,13	3.17	2 (16%)	15,17,17	2.23	4 (26%)

Mol	Type	Chain	Res	Link	Bond lengths			Bond angles		
					Counts	RMSZ	# Z > 2	Counts	RMSZ	# Z > 2
4	SO4	A	806	-	4,4,4	0.13	0	6,6,6	0.22	0
2	K4V	B	801	-	12,13,13	3.20	3 (25%)	15,17,17	2.19	4 (26%)

In the following table, the Chirals column lists the number of chiral outliers, the number of chiral centers analysed, the number of these observed in the model and the number defined in the Chemical Component Dictionary. Similar counts are reported in the Torsion and Rings columns. '-' means no outliers of that kind were identified.

Mol	Type	Chain	Res	Link	Chirals	Torsions	Rings
3	GOL	B	802[B]	-	-	2/4/4/4	-
3	GOL	A	802[B]	-	-	2/4/4/4	-
3	GOL	B	802[A]	-	-	1/4/4/4	-
3	GOL	A	802[A]	-	-	1/4/4/4	-
2	K4V	A	801	-	-	6/6/8/8	0/1/1/1
2	K4V	B	801	-	-	6/6/8/8	0/1/1/1

All (5) bond length outliers are listed below:

Mol	Chain	Res	Type	Atoms	Z	Observed(Å)	Ideal(Å)
2	B	801	K4V	O13-N10	10.37	1.40	1.22
2	A	801	K4V	O13-N10	10.31	1.40	1.22
2	B	801	K4V	O14-C15	2.99	1.46	1.35
2	A	801	K4V	O14-C15	2.97	1.46	1.35
2	B	801	K4V	C1-N10	-2.02	1.40	1.45

All (8) bond angle outliers are listed below:

Mol	Chain	Res	Type	Atoms	Z	Observed(°)	Ideal(°)
2	B	801	K4V	O14-C15-C16	6.36	125.08	110.98
2	A	801	K4V	O14-C15-C16	6.31	124.98	110.98
2	A	801	K4V	C4-O14-C15	3.81	133.43	118.27
2	B	801	K4V	C4-O14-C15	3.64	132.76	118.27
2	A	801	K4V	O14-C15-O17	-3.13	115.35	122.41
2	B	801	K4V	O14-C15-O17	-3.02	115.61	122.41
2	A	801	K4V	C6-C1-N10	2.52	121.27	119.38
2	B	801	K4V	C2-C1-N10	2.08	120.94	119.38

There are no chirality outliers.

All (18) torsion outliers are listed below:

Mol	Chain	Res	Type	Atoms
2	A	801	K4V	C2-C1-N10-O13
2	A	801	K4V	C6-C1-N10-O13
2	B	801	K4V	C2-C1-N10-O13
2	B	801	K4V	C6-C1-N10-O13
2	B	801	K4V	C16-C15-O14-C4
3	A	802[B]	GOL	C1-C2-C3-O3
2	B	801	K4V	O17-C15-O14-C4
2	A	801	K4V	C16-C15-O14-C4
2	A	801	K4V	O17-C15-O14-C4
3	B	802[B]	GOL	C1-C2-C3-O3
2	B	801	K4V	C3-C4-O14-C15
2	B	801	K4V	C5-C4-O14-C15
3	A	802[B]	GOL	O2-C2-C3-O3
3	B	802[B]	GOL	O2-C2-C3-O3
2	A	801	K4V	C3-C4-O14-C15
2	A	801	K4V	C5-C4-O14-C15
3	B	802[A]	GOL	O1-C1-C2-O2
3	A	802[A]	GOL	O1-C1-C2-O2

There are no ring outliers.

2 monomers are involved in 3 short contacts:

Mol	Chain	Res	Type	Clashes	Symm-Clashes
3	B	802[B]	GOL	2	0
3	A	802[B]	GOL	1	0

5.7 Other polymers [i](#)

There are no such residues in this entry.

5.8 Polymer linkage issues [i](#)

There are no chain breaks in this entry.

6 Fit of model and data

6.1 Protein, DNA and RNA chains

In the following table, the column labelled ‘#RSRZ > 2’ contains the number (and percentage) of RSRZ outliers, followed by percent RSRZ outliers for the chain as percentile scores relative to all X-ray entries and entries of similar resolution. The OWAB column contains the minimum, median, 95th percentile and maximum values of the occupancy-weighted average B-factor per residue. The column labelled ‘Q < 0.9’ lists the number of (and percentage) of residues with an average occupancy less than 0.9.

Mol	Chain	Analysed	<RSRZ>	#RSRZ>2	OWAB(Å ²)	Q<0.9
1	A	752/767 (98%)	0.74	38 (5%) 28 30	12, 18, 36, 72	0
1	B	752/767 (98%)	0.71	32 (4%) 35 38	12, 18, 34, 63	0
All	All	1504/1534 (98%)	0.72	70 (4%) 31 34	12, 18, 35, 72	0

All (70) RSRZ outliers are listed below:

Mol	Chain	Res	Type	RSRZ
1	A	495	ALA	9.0
1	B	495	ALA	8.7
1	B	382	PRO	7.9
1	B	494	ALA	7.7
1	B	363	VAL	7.2
1	A	494	ALA	6.6
1	A	766	ALA	6.5
1	A	382	PRO	6.3
1	A	493	GLY	6.3
1	B	15	ALA	5.7
1	B	365	ALA	5.5
1	A	379	PRO	5.4
1	A	424	VAL	5.3
1	A	363	VAL	5.2
1	A	15	ALA	5.1
1	B	364	PRO	5.1
1	A	499	ASP	4.9
1	B	766	ALA	4.9
1	A	381	SER	4.7
1	A	383	LEU	4.7
1	B	383	LEU	4.3
1	A	354	THR	4.0
1	B	492	ASP	3.9
1	A	497	GLY	3.9

Continued on next page...

Continued from previous page...

Mol	Chain	Res	Type	RSRZ
1	B	367	CYS	3.9
1	A	16	PRO	3.7
1	B	16	PRO	3.7
1	B	621	LEU	3.6
1	B	380	ALA	3.6
1	B	497	GLY	3.6
1	A	364	PRO	3.5
1	A	380	ALA	3.5
1	B	379	PRO	3.2
1	B	384	MET	3.1
1	B	622	ARG	3.1
1	A	30	GLY	3.1
1	B	357	GLU	3.0
1	B	366	GLY	2.9
1	A	496	ASP	2.9
1	B	381	SER	2.9
1	A	498	LEU	2.8
1	B	30	GLY	2.8
1	A	362	ALA	2.7
1	B	43	PRO	2.6
1	B	355	ASP	2.6
1	A	365	ALA	2.6
1	B	426	LEU	2.4
1	A	359	TYR	2.4
1	A	368	TYR	2.4
1	A	393	LEU	2.4
1	A	367	CYS	2.4
1	A	410	ASN	2.4
1	A	492	ASP	2.3
1	B	478	ILE	2.3
1	A	318	ARG	2.3
1	B	412	ALA	2.3
1	A	511	THR	2.3
1	A	621	LEU	2.3
1	B	499	ASP	2.3
1	A	764	TYR	2.2
1	A	126[A]	ILE	2.2
1	B	388	ILE	2.2
1	B	359	TYR	2.2
1	A	357	GLU	2.1
1	A	264	GLY	2.1
1	B	496	ASP	2.0

Continued on next page...

Continued from previous page...

Mol	Chain	Res	Type	RSRZ
1	A	27	ALA	2.0
1	A	352	ALA	2.0
1	A	56	GLN	2.0
1	B	482	SER	2.0

6.2 Non-standard residues in protein, DNA, RNA chains [i](#)

There are no non-standard protein/DNA/RNA residues in this entry.

6.3 Carbohydrates [i](#)

There are no monosaccharides in this entry.

6.4 Ligands [i](#)

In the following table, the Atoms column lists the number of modelled atoms in the group and the number defined in the chemical component dictionary. The B-factors column lists the minimum, median, 95th percentile and maximum values of B factors of atoms in the group. The column labelled 'Q< 0.9' lists the number of atoms with occupancy less than 0.9.

Mol	Type	Chain	Res	Atoms	RSCC	RSR	B-factors(\AA^2)	Q<0.9
3	GOL	A	802[A]	6/6	0.60	0.28	13,23,24,25	6
3	GOL	A	802[B]	6/6	0.60	0.28	14,24,25,27	6
4	SO4	A	805	5/5	0.74	0.31	39,44,51,55	0
2	K4V	B	801	13/13	0.78	0.21	31,40,50,55	0
4	SO4	B	804	5/5	0.78	0.26	29,40,42,43	0
3	GOL	B	802[A]	6/6	0.79	0.16	15,23,24,24	6
3	GOL	B	802[B]	6/6	0.79	0.16	18,23,25,25	6
4	SO4	A	804	5/5	0.85	0.33	34,44,48,49	0
2	K4V	A	801	13/13	0.89	0.20	30,38,53,55	0
4	SO4	A	803	5/5	0.94	0.22	40,42,43,49	0
4	SO4	A	806	5/5	0.95	0.20	28,29,33,33	0
4	SO4	B	805	5/5	0.95	0.26	26,26,29,33	0
4	SO4	B	803	5/5	0.96	0.14	31,37,43,46	0

6.5 Other polymers [i](#)

There are no such residues in this entry.