



## Full wwPDB EM Validation Report ⓘ

Jun 28, 2025 – 09:21 pm BST

PDB ID : 6T2C / pdb\_00006t2c  
EMDB ID : EMD-10368  
Title : Bat Influenza A polymerase recycling complex  
Authors : Wandzik, J.M.; Kouba, T.; Cusack, S.  
Deposited on : 2019-10-08  
Resolution : 3.52 Å(reported)

This is a Full wwPDB EM Validation Report for a publicly released PDB entry.

We welcome your comments at [validation@mail.wwpdb.org](mailto:validation@mail.wwpdb.org)

A user guide is available at

<https://www.wwpdb.org/validation/2017/EMValidationReportHelp>

with specific help available everywhere you see the ⓘ symbol.

The types of validation reports are described at

<http://www.wwpdb.org/validation/2017/FAQs#types>.

---

The following versions of software and data (see [references ⓘ](#)) were used in the production of this report:

EMDB validation analysis : 0.0.1.dev118  
MolProbity : 4-5-2 with Phenix2.0rc1  
Percentile statistics : 20231227.v01 (using entries in the PDB archive December 27th 2023)  
MapQ : 1.9.13  
Ideal geometry (proteins) : Engh & Huber (2001)  
Ideal geometry (DNA, RNA) : Parkinson et al. (1996)  
Validation Pipeline (wwPDB-VP) : 2.44

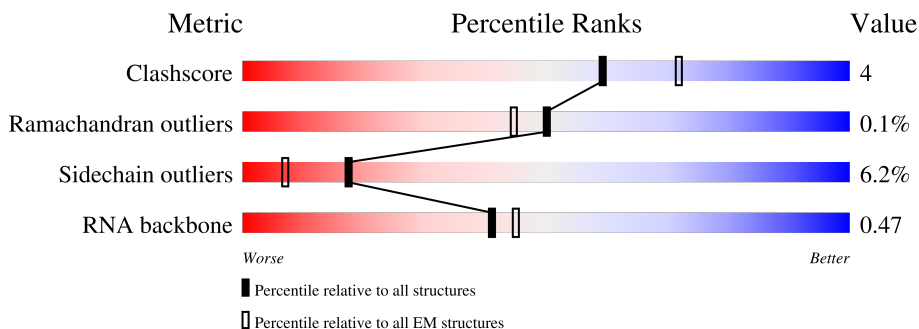
# 1 Overall quality at a glance

The following experimental techniques were used to determine the structure:

*ELECTRON MICROSCOPY*

The reported resolution of this entry is 3.52 Å.

Percentile scores (ranging between 0-100) for global validation metrics of the entry are shown in the following graphic. The table shows the number of entries on which the scores are based.



Metric	Whole archive (#Entries)	EM structures (#Entries)
Clashscore	210492	15764
Ramachandran outliers	207382	16835
Sidechain outliers	206894	16415
RNA backbone	6643	2191

The table below summarises the geometric issues observed across the polymeric chains and their fit to the map. The red, orange, yellow and green segments of the bar indicate the fraction of residues that contain outliers for  $\geq 3$ , 2, 1 and 0 types of geometric quality criteria respectively. A grey segment represents the fraction of residues that are not modelled. The numeric value for each fraction is indicated below the corresponding segment, with a dot representing fractions  $\leq 5\%$ . The upper red bar (where present) indicates the fraction of residues that have poor fit to the EM map (all-atom inclusion  $< 40\%$ ). The numeric value is given above the bar.

Mol	Chain	Length	Quality of chain
1	A	738	
2	B	776	
3	C	809	
4	V	34	

## 2 Entry composition

There are 5 unique types of molecules in this entry. The entry contains 10700 atoms, of which 0 are hydrogens and 0 are deuteriums.

In the tables below, the AltConf column contains the number of residues with at least one atom in alternate conformation and the Trace column contains the number of residues modelled with at most 2 atoms.

- Molecule 1 is a protein called Polymerase acidic protein.

Mol	Chain	Residues	Atoms					AltConf	Trace
			Total	C	N	O	S		
1	A	513	4145	2640	700	778	27	0	0

There are 25 discrepancies between the modelled and reference sequences:

Chain	Residue	Modelled	Actual	Comment	Reference
A	-13	GLY	-	expression tag	UNP H6QM92
A	-12	SER	-	expression tag	UNP H6QM92
A	-11	HIS	-	expression tag	UNP H6QM92
A	-10	HIS	-	expression tag	UNP H6QM92
A	-9	HIS	-	expression tag	UNP H6QM92
A	-8	HIS	-	expression tag	UNP H6QM92
A	-7	HIS	-	expression tag	UNP H6QM92
A	-6	HIS	-	expression tag	UNP H6QM92
A	-5	HIS	-	expression tag	UNP H6QM92
A	-4	HIS	-	expression tag	UNP H6QM92
A	-3	GLY	-	expression tag	UNP H6QM92
A	-2	SER	-	expression tag	UNP H6QM92
A	-1	GLY	-	expression tag	UNP H6QM92
A	0	SER	-	expression tag	UNP H6QM92
A	714	GLY	-	expression tag	UNP H6QM92
A	715	SER	-	expression tag	UNP H6QM92
A	716	GLY	-	expression tag	UNP H6QM92
A	717	SER	-	expression tag	UNP H6QM92
A	718	GLY	-	expression tag	UNP H6QM92
A	719	GLU	-	expression tag	UNP H6QM92
A	720	ASN	-	expression tag	UNP H6QM92
A	721	LEU	-	expression tag	UNP H6QM92
A	722	TYR	-	expression tag	UNP H6QM92
A	723	PHE	-	expression tag	UNP H6QM92
A	724	GLN	-	expression tag	UNP H6QM92

- Molecule 2 is a protein called RNA-directed RNA polymerase catalytic subunit.

Mol	Chain	Residues	Atoms					AltConf	Trace
2	B	626	Total	C	N	O	S	0	0
			4996	3152	880	933	31		

There are 20 discrepancies between the modelled and reference sequences:

Chain	Residue	Modelled	Actual	Comment	Reference
B	-8	GLY	-	expression tag	UNP H6QM91
B	-7	SER	-	expression tag	UNP H6QM91
B	-6	GLY	-	expression tag	UNP H6QM91
B	-5	SER	-	expression tag	UNP H6QM91
B	-4	GLY	-	expression tag	UNP H6QM91
B	-3	SER	-	expression tag	UNP H6QM91
B	-2	GLY	-	expression tag	UNP H6QM91
B	-1	SER	-	expression tag	UNP H6QM91
B	0	GLY	-	expression tag	UNP H6QM91
B	757	GLY	-	expression tag	UNP H6QM91
B	758	SER	-	expression tag	UNP H6QM91
B	759	GLY	-	expression tag	UNP H6QM91
B	760	SER	-	expression tag	UNP H6QM91
B	761	GLY	-	expression tag	UNP H6QM91
B	762	GLU	-	expression tag	UNP H6QM91
B	763	ASN	-	expression tag	UNP H6QM91
B	764	LEU	-	expression tag	UNP H6QM91
B	765	TYR	-	expression tag	UNP H6QM91
B	766	PHE	-	expression tag	UNP H6QM91
B	767	GLN	-	expression tag	UNP H6QM91

- Molecule 3 is a protein called Polymerase basic protein 2.

Mol	Chain	Residues	Atoms					AltConf	Trace
3	C	116	Total	C	N	O	S	0	0
			941	602	164	168	7		

There are 49 discrepancies between the modelled and reference sequences:

Chain	Residue	Modelled	Actual	Comment	Reference
C	-8	GLY	-	expression tag	UNP H6QM90
C	-7	SER	-	expression tag	UNP H6QM90
C	-6	GLY	-	expression tag	UNP H6QM90
C	-5	SER	-	expression tag	UNP H6QM90
C	-4	GLY	-	expression tag	UNP H6QM90
C	-3	SER	-	expression tag	UNP H6QM90
C	-2	GLY	-	expression tag	UNP H6QM90

*Continued on next page...*

*Continued from previous page...*

Chain	Residue	Modelled	Actual	Comment	Reference
C	-1	SER	-	expression tag	UNP H6QM90
C	0	GLY	-	expression tag	UNP H6QM90
C	761	GLY	-	expression tag	UNP H6QM90
C	762	TRP	-	expression tag	UNP H6QM90
C	763	SER	-	expression tag	UNP H6QM90
C	764	HIS	-	expression tag	UNP H6QM90
C	765	PRO	-	expression tag	UNP H6QM90
C	766	GLN	-	expression tag	UNP H6QM90
C	767	PHE	-	expression tag	UNP H6QM90
C	768	GLU	-	expression tag	UNP H6QM90
C	769	LYS	-	expression tag	UNP H6QM90
C	770	GLY	-	expression tag	UNP H6QM90
C	771	GLY	-	expression tag	UNP H6QM90
C	772	GLY	-	expression tag	UNP H6QM90
C	773	SER	-	expression tag	UNP H6QM90
C	774	GLY	-	expression tag	UNP H6QM90
C	775	GLY	-	expression tag	UNP H6QM90
C	776	GLY	-	expression tag	UNP H6QM90
C	777	SER	-	expression tag	UNP H6QM90
C	778	GLY	-	expression tag	UNP H6QM90
C	779	GLY	-	expression tag	UNP H6QM90
C	780	SER	-	expression tag	UNP H6QM90
C	781	ALA	-	expression tag	UNP H6QM90
C	782	TRP	-	expression tag	UNP H6QM90
C	783	SER	-	expression tag	UNP H6QM90
C	784	HIS	-	expression tag	UNP H6QM90
C	785	PRO	-	expression tag	UNP H6QM90
C	786	GLN	-	expression tag	UNP H6QM90
C	787	PHE	-	expression tag	UNP H6QM90
C	788	GLU	-	expression tag	UNP H6QM90
C	789	LYS	-	expression tag	UNP H6QM90
C	790	GLY	-	expression tag	UNP H6QM90
C	791	ARG	-	expression tag	UNP H6QM90
C	792	SER	-	expression tag	UNP H6QM90
C	793	GLY	-	expression tag	UNP H6QM90
C	794	GLY	-	expression tag	UNP H6QM90
C	795	GLU	-	expression tag	UNP H6QM90
C	796	ASN	-	expression tag	UNP H6QM90
C	797	LEU	-	expression tag	UNP H6QM90
C	798	TYR	-	expression tag	UNP H6QM90
C	799	PHE	-	expression tag	UNP H6QM90
C	800	GLN	-	expression tag	UNP H6QM90

- Molecule 4 is a RNA chain called vRNA.

Mol	Chain	Residues	Atoms					AltConf	Trace
4	V	29	Total	C	N	O	P	0	0
			617	276	109	203	29		

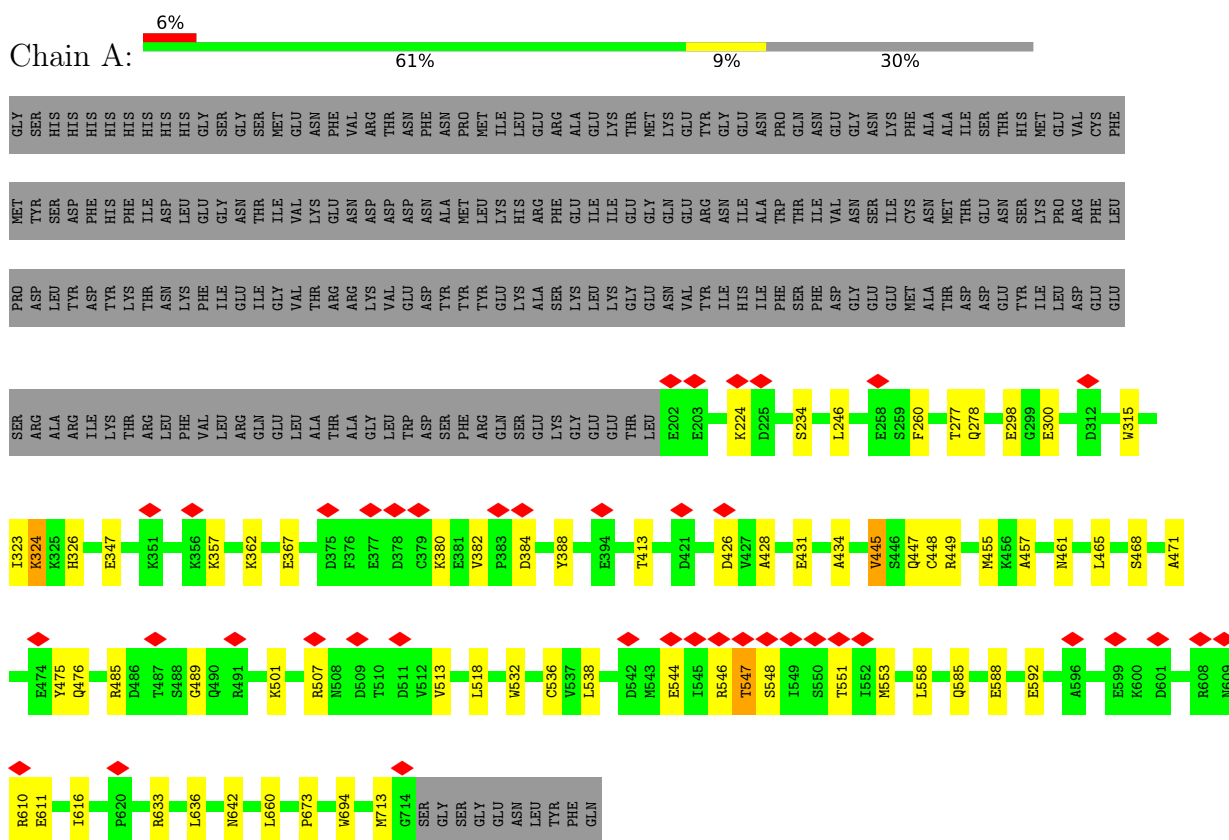
- Molecule 5 is MAGNESIUM ION (CCD ID: MG) (formula: Mg).

Mol	Chain	Residues	Atoms		AltConf
5	B	1	Total	Mg	0
			1	1	

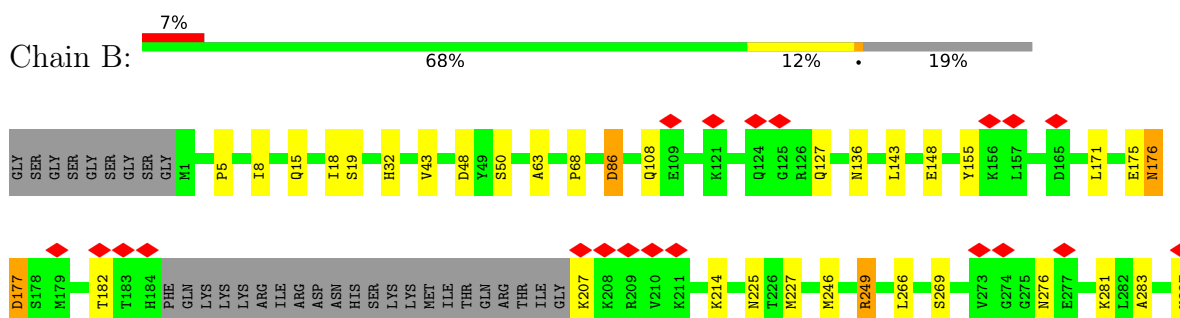
### 3 Residue-property plots

These plots are drawn for all protein, RNA, DNA and oligosaccharide chains in the entry. The first graphic for a chain summarises the proportions of the various outlier classes displayed in the second graphic. The second graphic shows the sequence view annotated by issues in geometry and atom inclusion in map density. Residues are color-coded according to the number of geometric quality criteria for which they contain at least one outlier: green = 0, yellow = 1, orange = 2 and red = 3 or more. A red diamond above a residue indicates a poor fit to the EM map for this residue (all-atom inclusion < 40%). Stretches of 2 or more consecutive residues without any outlier are shown as a green connector. Residues present in the sample, but not in the model, are shown in grey.

#### • Molecule 1: Polymerase acidic protein



#### • Molecule 2: RNA-directed RNA polymerase catalytic subunit

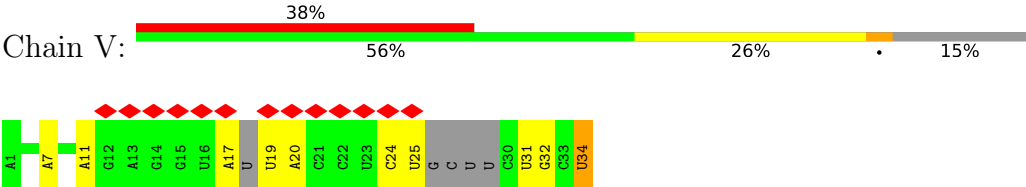






ILE	PRO	MET
ILE	GLU	LYS
LEU	ARG	ARG
LEU	SER	LYS
LEU	ILE	TYR
PRO	ILE	PHE
PHE	LEU	GLN
SER	THR	
SER	GLU	ASP
ALA	SER	SER
SER	ILE	ILE
HIS	LEU	LEU
PRO	SER	THR
PRO	THR	ASP
SER	ILE	SER
SER	GLU	GLN
LEU	SER	THR
GLY	ALA	ALA
THR	VAL	LYS
GLN	LEU	ARG
THR	ARG	ILE
PHE	GLY	ARG
SER	PHE	ILE
SER	LEU	ARG
THR	ILE	GLU
THR	LEU	GLU
ASN	GLY	SER
ASN	LYS	LYS
ILE	ALA	GLY
ARG	ASN	TRP
GLY	ALA	SER
LEU	LYS	HIS
ARG	PRO	PRO
ARG	GLY	GLN
LEU	PRO	PHE
LEU	VAL	GLU
LEU	LEU	LYS
ILE	THR	GLY
ARG	ILE	GLY
GLY	GLY	GLY
ASN	GLU	SER
ASN	LEU	GLY
VAL	ASP	GLY
PHE	LYS	GLY
LEU	LEU	SER
GLY	GLY	GLY
ASN	ARG	GLY
TYR	GLY	GLY
ASN	GLY	SER
GLN	GLU	ALA
MET	LYS	TRP
ALA	GLU	SER
ASN	ALA	HIS
VAL	ASN	PRO
ILE	VAL	GLN
ILE	LEU	PRO
VAL	ILE	GLN
GLN	GLY	PHE
LEU	GLN	GLU
GLY	GLY	LYS
LYS	ASP	GLY
SER	THR	ARG
VAL	VAL	SER
GLY	LEU	GLY
SER	VAL	GLY

● Molecule 4: vRNA



## 4 Experimental information

Property	Value	Source
EM reconstruction method	SINGLE PARTICLE	Depositor
Imposed symmetry	POINT, Not provided	
Number of particles used	16301	Depositor
Resolution determination method	FSC 0.143 CUT-OFF	Depositor
CTF correction method	PHASE FLIPPING ONLY	Depositor
Microscope	TFS GLACIOS	Depositor
Voltage (kV)	200	Depositor
Electron dose ( $e^-/\text{\AA}^2$ )	31	Depositor
Minimum defocus (nm)	Not provided	
Maximum defocus (nm)	Not provided	
Magnification	Not provided	
Image detector	FEI FALCON III (4k x 4k)	Depositor
Maximum map value	0.209	Depositor
Minimum map value	-0.125	Depositor
Average map value	-0.000	Depositor
Map value standard deviation	0.008	Depositor
Recommended contour level	0.05	Depositor
Map size ( $\text{\AA}$ )	288.30002, 288.30002, 288.30002	wwPDB
Map dimensions	300, 300, 300	wwPDB
Map angles ( $^\circ$ )	90.0, 90.0, 90.0	wwPDB
Pixel spacing ( $\text{\AA}$ )	0.9610001, 0.9610001, 0.9610001	Depositor

## 5 Model quality [i](#)

### 5.1 Standard geometry [i](#)

Bond lengths and bond angles in the following residue types are not validated in this section: MG

The Z score for a bond length (or angle) is the number of standard deviations the observed value is removed from the expected value. A bond length (or angle) with  $|Z| > 5$  is considered an outlier worth inspection. RMSZ is the root-mean-square of all Z scores of the bond lengths (or angles).

Mol	Chain	Bond lengths		Bond angles	
		RMSZ	$\# Z  > 5$	RMSZ	$\# Z  > 5$
1	A	0.34	0/4235	0.44	0/5707
2	B	0.33	0/5097	0.46	1/6887 (0.0%)
3	C	0.22	0/970	0.47	0/1320
4	V	0.30	0/687	0.41	0/1061
All	All	0.32	0/10989	0.45	1/14975 (0.0%)

There are no bond length outliers.

All (1) bond angle outliers are listed below:

Mol	Chain	Res	Type	Atoms	Z	Observed(°)	Ideal(°)
2	B	445	ASP	N-CA-C	-5.32	104.50	112.54

There are no chirality outliers.

There are no planarity outliers.

### 5.2 Too-close contacts [i](#)

In the following table, the Non-H and H(model) columns list the number of non-hydrogen atoms and hydrogen atoms in the chain respectively. The H(added) column lists the number of hydrogen atoms added and optimized by MolProbity. The Clashes column lists the number of clashes within the asymmetric unit, whereas Symm-Clashes lists symmetry-related clashes.

Mol	Chain	Non-H	H(model)	H(added)	Clashes	Symm-Clashes
1	A	4145	0	4121	38	0
2	B	4996	0	4988	49	0
3	C	941	0	902	12	0
4	V	617	0	314	7	0
5	B	1	0	0	0	0
All	All	10700	0	10325	91	0

The all-atom clashscore is defined as the number of clashes found per 1000 atoms (including hydrogen atoms). The all-atom clashscore for this structure is 4.

All (91) close contacts within the same asymmetric unit are listed below, sorted by their clash magnitude.

Atom-1	Atom-2	Interatomic distance (Å)	Clash overlap (Å)
1:A:544:GLU:HG2	1:A:553:MET:SD	1.74	1.26
1:A:546:ARG:HG2	1:A:551:THR:HG23	1.42	1.02
1:A:544:GLU:CG	1:A:553:MET:SD	2.55	0.93
2:B:48:ASP:O	2:B:48:ASP:OD1	2.10	0.70
2:B:292:LYS:O	2:B:292:LYS:HG2	1.98	0.64
1:A:546:ARG:HG2	1:A:551:THR:CG2	2.24	0.63
4:V:24:C:H2'	4:V:25:U:H6	1.63	0.63
1:A:382:VAL:HG12	1:A:384:ASP:H	1.65	0.62
1:A:347:GLU:HG2	1:A:347:GLU:O	1.99	0.61
2:B:619:ASP:OD1	2:B:619:ASP:N	2.32	0.60
2:B:617:ASP:OD1	2:B:617:ASP:N	2.30	0.60
1:A:324:LYS:NZ	1:A:532:TRP:O	2.36	0.59
1:A:448:CYS:SG	1:A:449:ARG:N	2.77	0.58
1:A:357:LYS:HB3	1:A:362:LYS:HE3	1.87	0.57
1:A:610:ARG:O	1:A:611:GLU:HG3	2.05	0.57
2:B:127:GLN:O	2:B:249:ARG:NH2	2.38	0.57
2:B:225:ASN:OD1	2:B:350:ARG:NH1	2.39	0.56
1:A:457:ALA:O	1:A:461:ASN:ND2	2.38	0.56
1:A:431:GLU:OE1	2:B:600:ASN:ND2	2.39	0.56
2:B:625:CYS:HB2	3:C:108:VAL:HG11	1.88	0.54
2:B:136:ASN:OD1	2:B:225:ASN:ND2	2.41	0.53
1:A:246:LEU:HD22	2:B:468:ARG:HB3	1.90	0.53
2:B:283:ALA:O	2:B:287:LYS:HG3	2.08	0.53
1:A:547:THR:OG1	1:A:548:SER:N	2.42	0.53
3:C:71:ASP:HB2	3:C:75:ASN:H	1.75	0.52
4:V:24:C:H2'	4:V:25:U:C6	2.45	0.52
2:B:372:ASN:N	2:B:372:ASN:OD1	2.43	0.51
2:B:571:ARG:NH2	4:V:31:U:OP1	2.42	0.51
2:B:374:SER:OG	2:B:375:ASP:OD1	2.27	0.50
2:B:177:ASP:OD1	2:B:177:ASP:N	2.38	0.50
1:A:357:LYS:HG2	1:A:475:TYR:CE2	2.47	0.50
1:A:326:HIS:HB2	1:A:536:CYS:HB2	1.94	0.50
1:A:234:SER:HB2	2:B:334:ARG:HH22	1.76	0.49
1:A:485:ARG:NH1	1:A:489:GLY:O	2.46	0.49
1:A:538:LEU:HD12	1:A:558:LEU:HD23	1.94	0.49
2:B:522:ASP:OD2	2:B:559:TYR:OH	2.31	0.49
2:B:553:LYS:NZ	4:V:34:U:OP1	2.44	0.49

*Continued on next page...*

*Continued from previous page...*

Atom-1	Atom-2	Interatomic distance (Å)	Clash overlap (Å)
1:A:380:LYS:O	2:B:380:TYR:OH	2.28	0.48
2:B:558:THR:HG23	3:C:48:LYS:HG2	1.96	0.48
2:B:309:TRP:HZ3	2:B:475:ILE:HG23	1.78	0.48
2:B:177:ASP:HA	2:B:214:LYS:HB2	1.96	0.48
2:B:369:SER:OG	2:B:372:ASN:OD1	2.31	0.47
2:B:474:GLY:O	2:B:476:ASN:ND2	2.48	0.47
2:B:315:PRO:HA	2:B:318:PHE:HD2	1.80	0.47
2:B:155:TYR:OH	2:B:176:ASN:ND2	2.44	0.47
1:A:367:GLU:OE1	1:A:475:TYR:OH	2.33	0.47
1:A:642:ASN:OD1	1:A:694:TRP:NE1	2.40	0.47
1:A:426:ASP:OD1	2:B:600:ASN:ND2	2.48	0.47
1:A:298:GLU:O	1:A:298:GLU:HG2	2.15	0.46
2:B:86:ASP:OD1	2:B:86:ASP:N	2.35	0.46
2:B:446:ASP:CB	2:B:493:THR:HG22	2.45	0.46
2:B:354:GLY:HA3	2:B:368:ILE:O	2.15	0.46
2:B:50:SER:HB3	2:B:68:PRO:HB3	1.97	0.46
2:B:269:SER:O	2:B:281:LYS:NZ	2.41	0.46
2:B:302:ILE:HG12	2:B:484:ILE:HB	1.98	0.46
2:B:519:GLU:HB2	2:B:664:HIS:HB3	1.98	0.45
1:A:413:THR:OG1	1:A:447:GLN:O	2.33	0.45
1:A:300:GLU:O	4:V:32:G:N2	2.49	0.45
1:A:610:ARG:C	1:A:611:GLU:HG3	2.42	0.45
2:B:371:GLU:O	2:B:371:GLU:HG2	2.16	0.45
2:B:525:ILE:HG13	2:B:657:TYR:HB3	1.99	0.45
3:C:235:THR:OG1	3:C:242:GLN:O	2.33	0.45
2:B:362:MET:HB2	2:B:364:LEU:HD22	1.98	0.44
2:B:43:VAL:HG22	2:B:403:LEU:HD13	2.00	0.44
2:B:443:SER:HB2	2:B:492:PHE:HZ	1.83	0.44
2:B:593:ASP:OD2	2:B:620:TYR:OH	2.30	0.44
3:C:46:ARG:HA	3:C:49:TRP:CD1	2.53	0.44
1:A:260:PHE:HB3	1:A:673:PRO:HG2	1.99	0.43
2:B:266:LEU:HD13	2:B:421:VAL:HG11	2.00	0.43
3:C:56:PRO:HG2	3:C:57:ILE:HG13	2.00	0.43
4:V:19:U:H4'	4:V:20:A:C8	2.53	0.43
2:B:5:PRO:O	2:B:8:ILE:HB	2.19	0.43
2:B:18:ILE:HD12	2:B:18:ILE:HA	1.90	0.43
3:C:239:CYS:SG	3:C:240:TRP:N	2.91	0.43
3:C:106:SER:OG	3:C:107:ASP:N	2.51	0.43
2:B:63:ALA:HB1	2:B:402:SER:HB2	2.00	0.43
2:B:489:THR:HA	2:B:497:TYR:O	2.18	0.43
3:C:132:PRO:HD2	3:C:243:GLN:HB3	2.01	0.43

*Continued on next page...*

Continued from previous page...

Atom-1	Atom-2	Interatomic distance (Å)	Clash overlap (Å)
1:A:448:CYS:HB2	1:A:633:ARG:HD2	2.00	0.42
2:B:309:TRP:HZ2	2:B:416:SER:HB3	1.84	0.42
1:A:434:ALA:HB2	2:B:541:PRO:HB2	2.00	0.42
2:B:143:LEU:HD13	2:B:246:MET:HE2	2.02	0.42
1:A:428:ALA:HB1	3:C:242:GLN:HE22	1.85	0.41
3:C:72:GLU:OE1	3:C:101:ARG:NH2	2.42	0.41
1:A:553:MET:HE3	1:A:553:MET:HB3	1.86	0.41
1:A:224:LYS:O	1:A:224:LYS:HG2	2.20	0.41
1:A:588:GLU:OE1	2:B:543:THR:OG1	2.34	0.41
1:A:471:ALA:O	1:A:501:LYS:NZ	2.54	0.40
1:A:445:VAL:HG22	1:A:636:LEU:HD22	2.04	0.40
1:A:485:ARG:NH2	4:V:34:U:O2	2.55	0.40
1:A:592:GLU:OE1	3:C:238:THR:OG1	2.37	0.40

There are no symmetry-related clashes.

## 5.3 Torsion angles [i](#)

### 5.3.1 Protein backbone [i](#)

In the following table, the Percentiles column shows the percent Ramachandran outliers of the chain as a percentile score with respect to all PDB entries followed by that with respect to all EM entries.

The Analysed column shows the number of residues for which the backbone conformation was analysed, and the total number of residues.

Mol	Chain	Analysed	Favoured	Allowed	Outliers	Percentiles	
1	A	511/738 (69%)	483 (94%)	28 (6%)	0	100	100
2	B	620/776 (80%)	588 (95%)	31 (5%)	1 (0%)	44	75
3	C	112/809 (14%)	100 (89%)	12 (11%)	0	100	100
All	All	1243/2323 (54%)	1171 (94%)	71 (6%)	1 (0%)	50	79

All (1) Ramachandran outliers are listed below:

Mol	Chain	Res	Type
2	B	444	SER

### 5.3.2 Protein sidechains ⓘ

In the following table, the Percentiles column shows the percent sidechain outliers of the chain as a percentile score with respect to all PDB entries followed by that with respect to all EM entries.

The Analysed column shows the number of residues for which the sidechain conformation was analysed, and the total number of residues.

Mol	Chain	Analysed	Rotameric	Outliers	Percentiles	
1	A	456/657 (69%)	437 (96%)	19 (4%)	25	54
2	B	548/676 (81%)	511 (93%)	37 (7%)	13	39
3	C	100/706 (14%)	87 (87%)	13 (13%)	3	18
All	All	1104/2039 (54%)	1035 (94%)	69 (6%)	17	42

All (69) residues with a non-rotameric sidechain are listed below:

Mol	Chain	Res	Type
1	A	277	THR
1	A	278	GLN
1	A	315	TRP
1	A	323	ILE
1	A	324	LYS
1	A	388	TYR
1	A	445	VAL
1	A	455	MET
1	A	465	LEU
1	A	468	SER
1	A	476	GLN
1	A	507	ARG
1	A	513	VAL
1	A	518	LEU
1	A	547	THR
1	A	585	GLN
1	A	616	ILE
1	A	660	LEU
1	A	713	MET
2	B	15	GLN
2	B	19	SER
2	B	32	HIS
2	B	86	ASP
2	B	108	GLN
2	B	148	GLU
2	B	171	LEU

*Continued on next page...*

*Continued from previous page...*

Mol	Chain	Res	Type
2	B	175	GLU
2	B	176	ASN
2	B	177	ASP
2	B	182	THR
2	B	207	LYS
2	B	227	MET
2	B	249	ARG
2	B	276	ASN
2	B	294	THR
2	B	305	ASP
2	B	368	ILE
2	B	372	ASN
2	B	375	ASP
2	B	392	ILE
2	B	397	VAL
2	B	435	THR
2	B	444	SER
2	B	468	ARG
2	B	491	GLU
2	B	529	VAL
2	B	573	THR
2	B	583	THR
2	B	589	LEU
2	B	597	ASN
2	B	610	CYS
2	B	617	ASP
2	B	619	ASP
2	B	632	VAL
2	B	658	ASP
2	B	660	VAL
3	C	67	ILE
3	C	73	ASP
3	C	81	THR
3	C	87	ASN
3	C	89	VAL
3	C	108	VAL
3	C	113	ARG
3	C	117	MET
3	C	126	THR
3	C	127	HIS
3	C	129	THR
3	C	133	VAL

*Continued on next page...*



*Continued from previous page...*

Mol	Chain	Res	Type
3	C	245	THR

Sometimes sidechains can be flipped to improve hydrogen bonding and reduce clashes. All (18) such sidechains are listed below:

Mol	Chain	Res	Type
1	A	414	ASN
1	A	416	ASN
1	A	439	ASN
1	A	476	GLN
1	A	621	GLN
2	B	77	ASN
2	B	108	GLN
2	B	176	ASN
2	B	216	ASN
2	B	284	ASN
2	B	310	ASN
2	B	329	GLN
2	B	425	ASN
2	B	567	ASN
2	B	664	HIS
2	B	671	ASN
3	C	87	ASN
3	C	242	GLN

### 5.3.3 RNA ⓘ

Mol	Chain	Analysed	Backbone Outliers	Pucker Outliers
4	V	26/34 (76%)	4 (15%)	0

All (4) RNA backbone outliers are listed below:

Mol	Chain	Res	Type
4	V	7	A
4	V	11	A
4	V	17	A
4	V	34	U

There are no RNA pucker outliers to report.

## 5.4 Non-standard residues in protein, DNA, RNA chains [i](#)

There are no non-standard protein/DNA/RNA residues in this entry.

## 5.5 Carbohydrates [i](#)

There are no oligosaccharides in this entry.

## 5.6 Ligand geometry [i](#)

Of 1 ligands modelled in this entry, 1 is monoatomic - leaving 0 for Mogul analysis.

There are no bond length outliers.

There are no bond angle outliers.

There are no chirality outliers.

There are no torsion outliers.

There are no ring outliers.

No monomer is involved in short contacts.

## 5.7 Other polymers [i](#)

There are no such residues in this entry.

## 5.8 Polymer linkage issues [i](#)

There are no chain breaks in this entry.

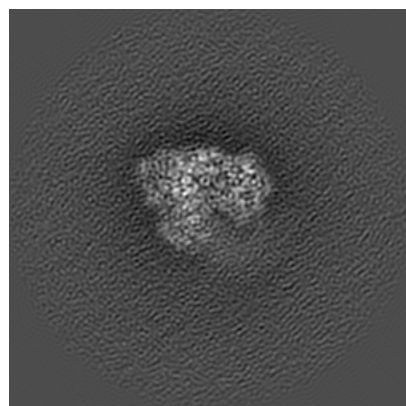
## 6 Map visualisation [i](#)

This section contains visualisations of the EMDB entry EMD-10368. These allow visual inspection of the internal detail of the map and identification of artifacts.

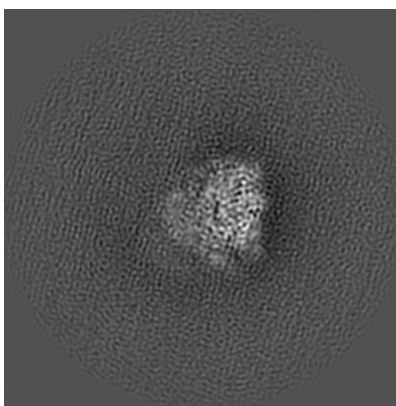
Images derived from a raw map, generated by summing the deposited half-maps, are presented below the corresponding image components of the primary map to allow further visual inspection and comparison with those of the primary map.

### 6.1 Orthogonal projections [i](#)

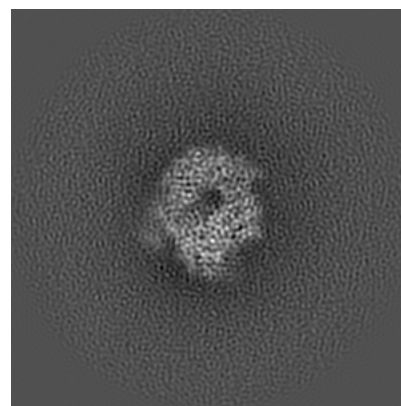
#### 6.1.1 Primary map



X

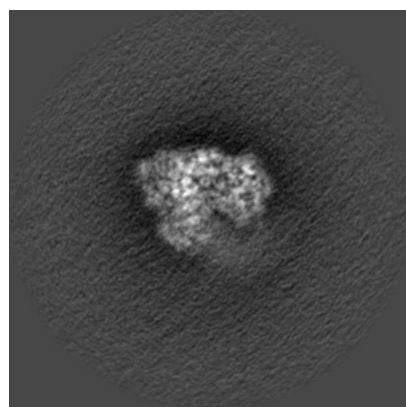


Y

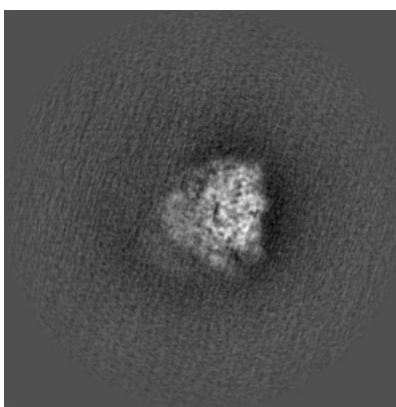


Z

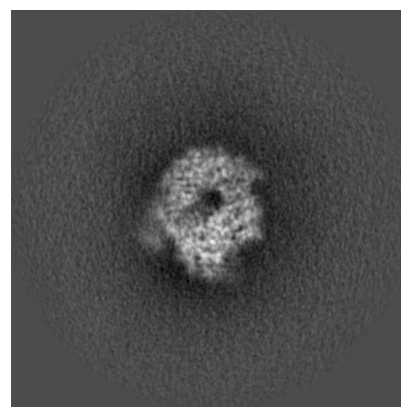
#### 6.1.2 Raw map



X



Y

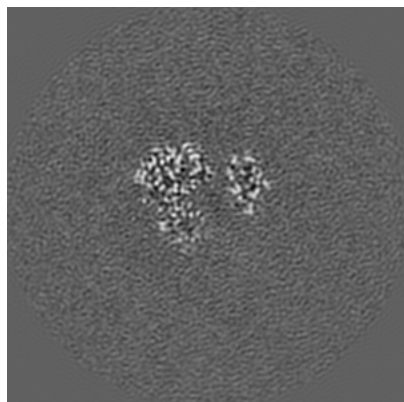


Z

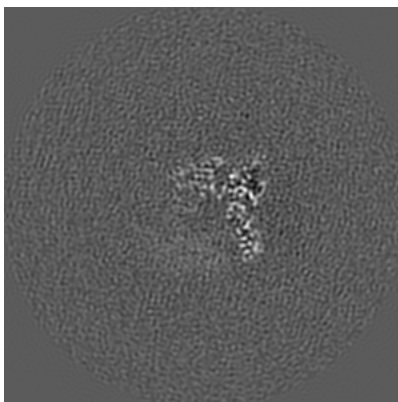
The images above show the map projected in three orthogonal directions.

## 6.2 Central slices [i](#)

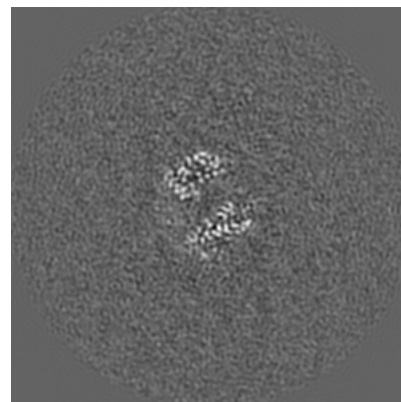
### 6.2.1 Primary map



X Index: 150

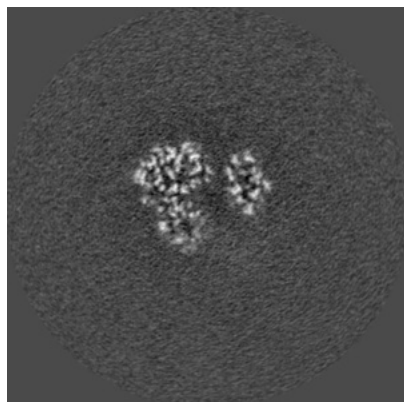


Y Index: 150

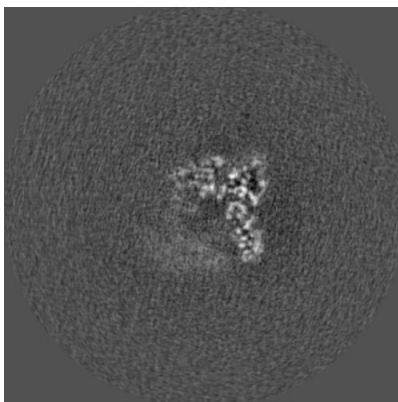


Z Index: 150

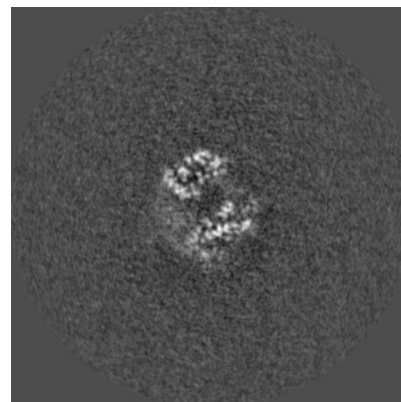
### 6.2.2 Raw map



X Index: 150



Y Index: 150

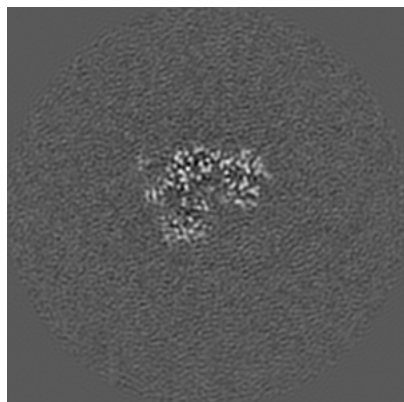


Z Index: 150

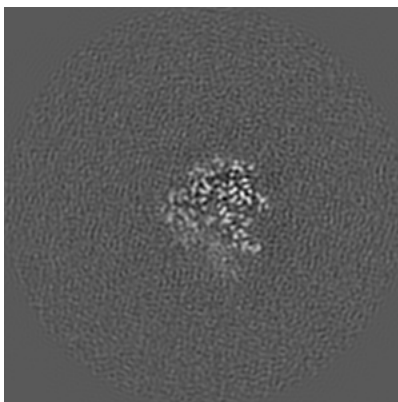
The images above show central slices of the map in three orthogonal directions.

## 6.3 Largest variance slices [i](#)

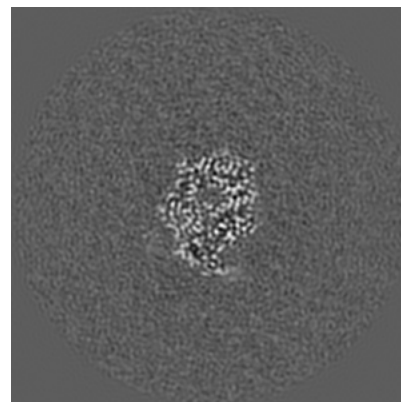
### 6.3.1 Primary map



X Index: 159

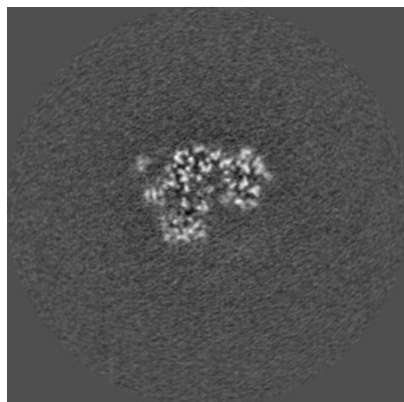


Y Index: 135

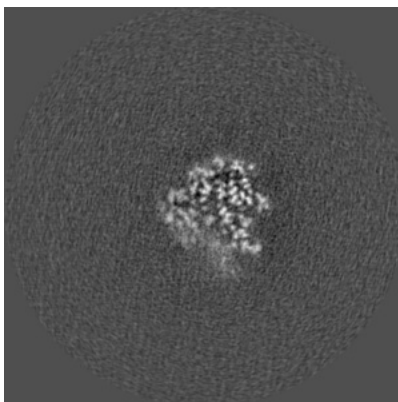


Z Index: 179

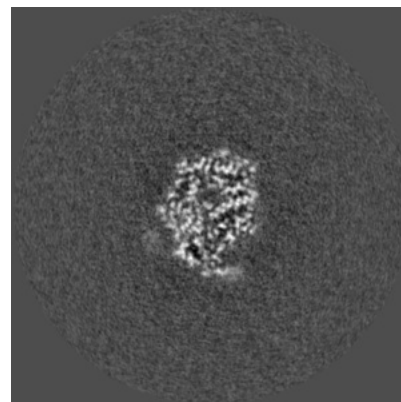
### 6.3.2 Raw map



X Index: 159



Y Index: 135



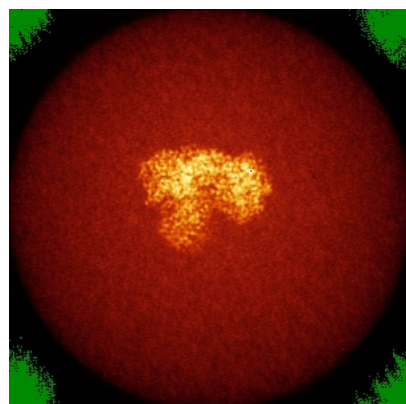
Z Index: 179

The images above show the largest variance slices of the map in three orthogonal directions.

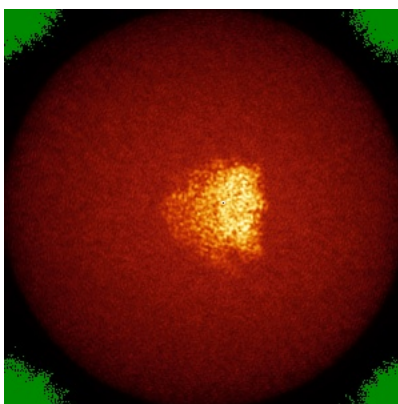


## 6.4 Orthogonal standard-deviation projections (False-color) [i](#)

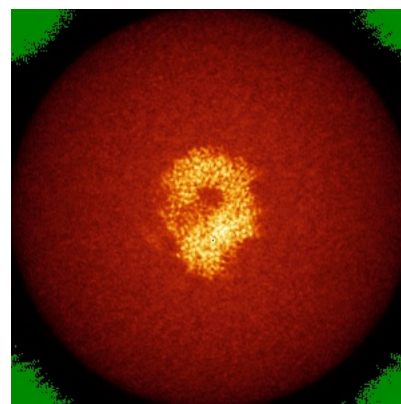
### 6.4.1 Primary map



X

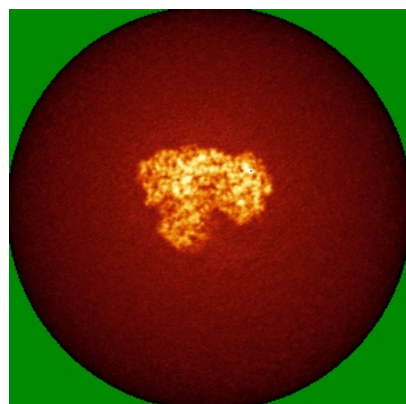


Y

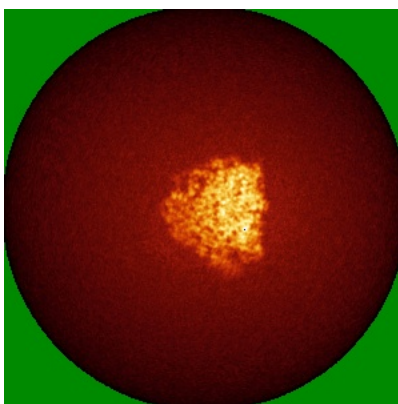


Z

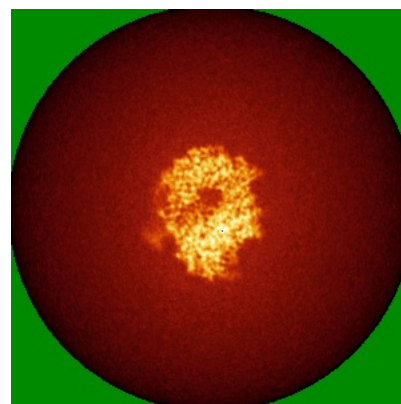
### 6.4.2 Raw map



X



Y

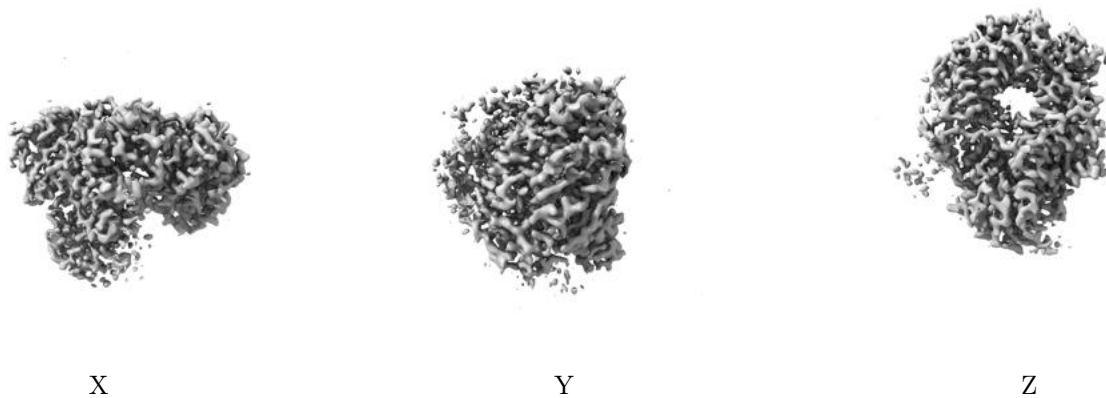


Z

The images above show the map standard deviation projections with false color in three orthogonal directions. Minimum values are shown in green, max in blue, and dark to light orange shades represent small to large values respectively.

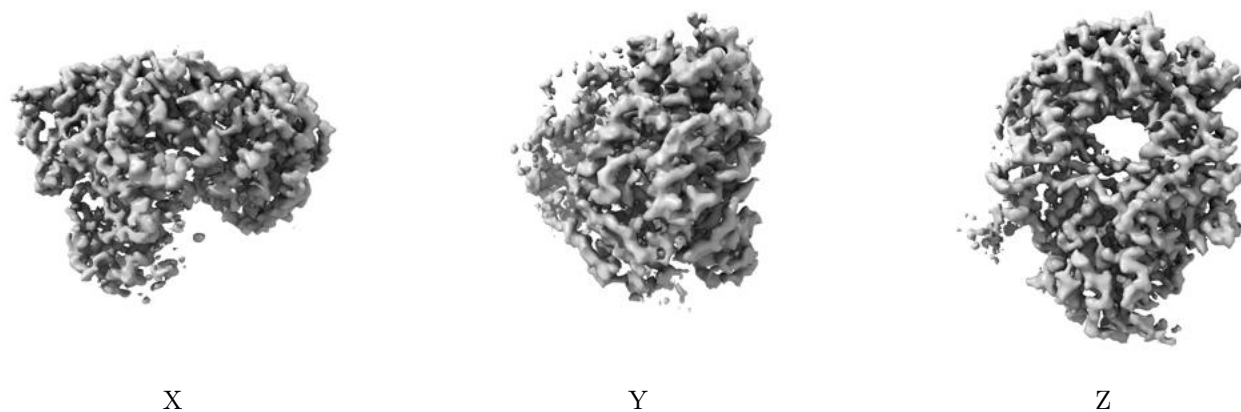
## 6.5 Orthogonal surface views [i](#)

### 6.5.1 Primary map



The images above show the 3D surface view of the map at the recommended contour level 0.05. These images, in conjunction with the slice images, may facilitate assessment of whether an appropriate contour level has been provided.

### 6.5.2 Raw map



These images show the 3D surface of the raw map. The raw map's contour level was selected so that its surface encloses the same volume as the primary map does at its recommended contour level.

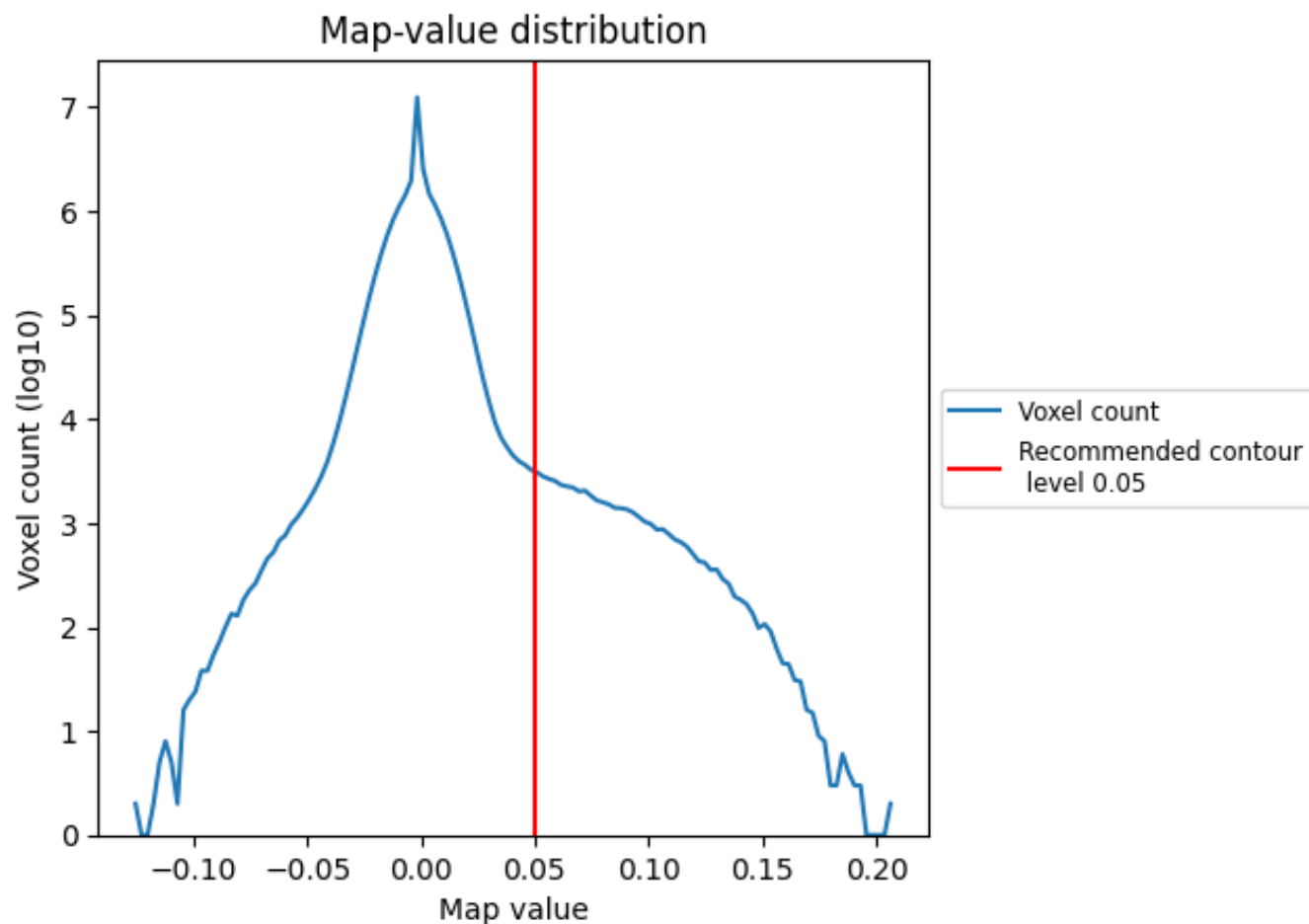
## 6.6 Mask visualisation [i](#)

This section was not generated. No masks/segmentation were deposited.

## 7 Map analysis [i](#)

This section contains the results of statistical analysis of the map.

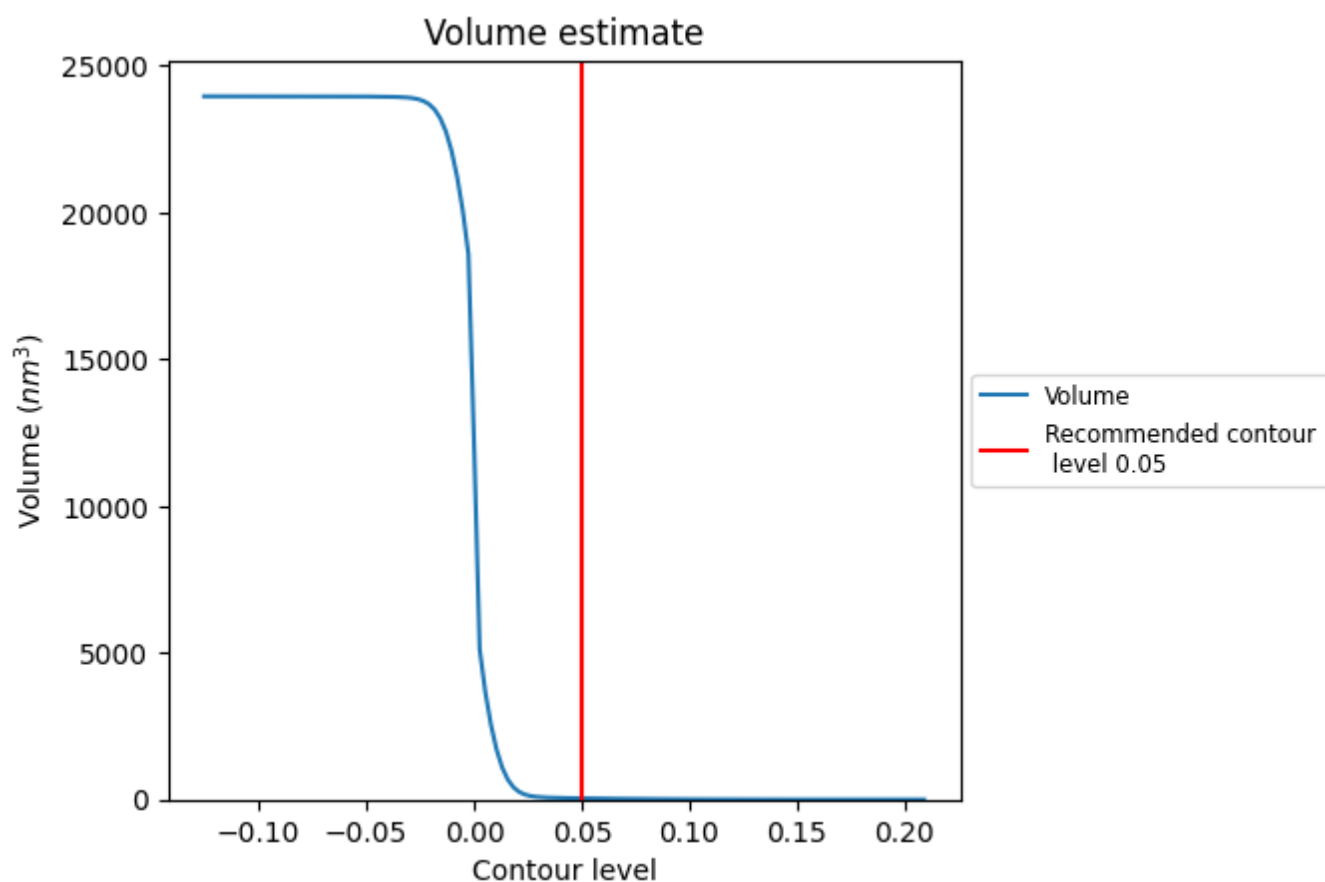
### 7.1 Map-value distribution [i](#)



The map-value distribution is plotted in 128 intervals along the x-axis. The y-axis is logarithmic. A spike in this graph at zero usually indicates that the volume has been masked.



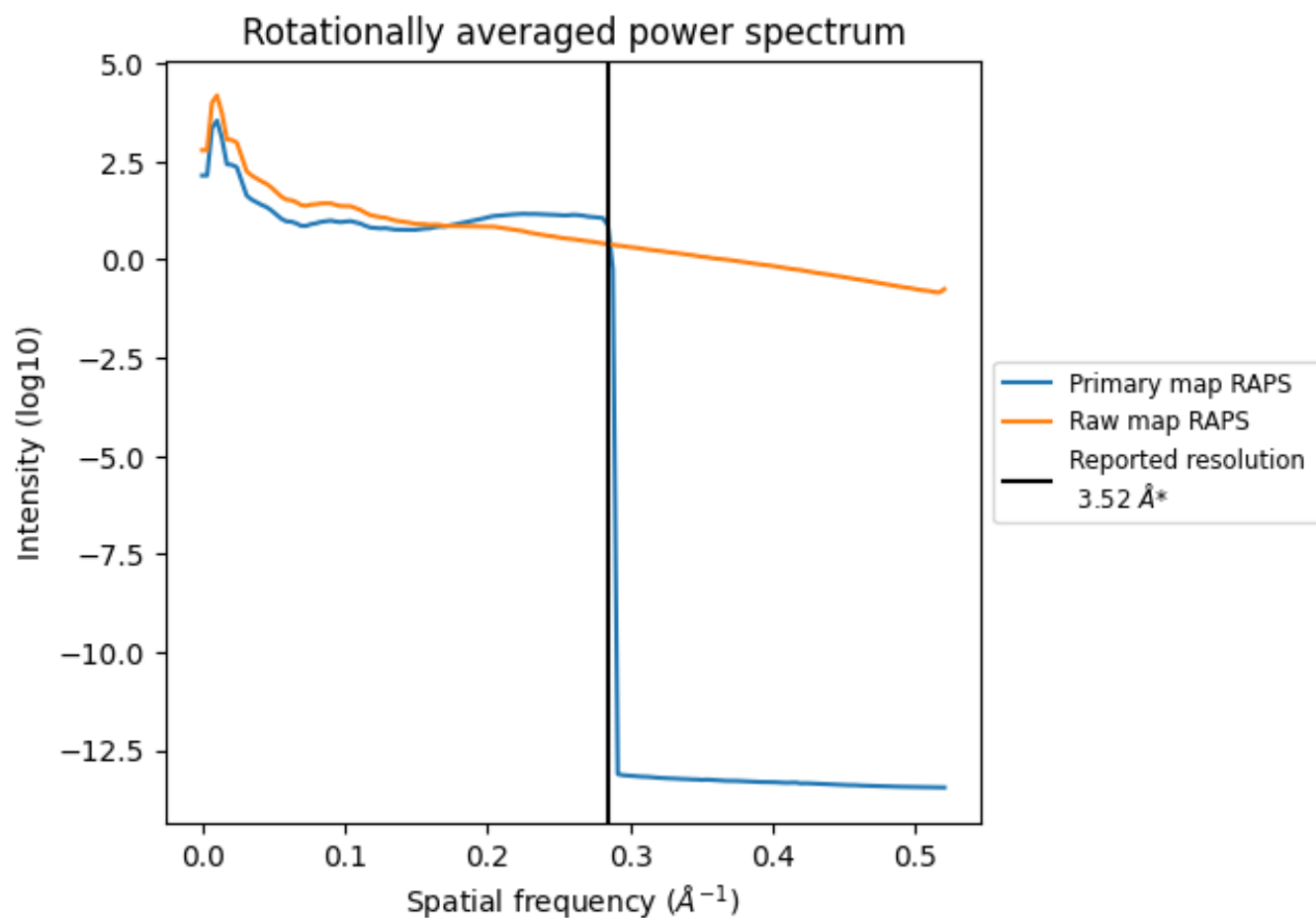
## 7.2 Volume estimate [i](#)



The volume at the recommended contour level is 41 nm<sup>3</sup>; this corresponds to an approximate mass of 37 kDa.

The volume estimate graph shows how the enclosed volume varies with the contour level. The recommended contour level is shown as a vertical line and the intersection between the line and the curve gives the volume of the enclosed surface at the given level.

### 7.3 Rotationally averaged power spectrum ⓘ

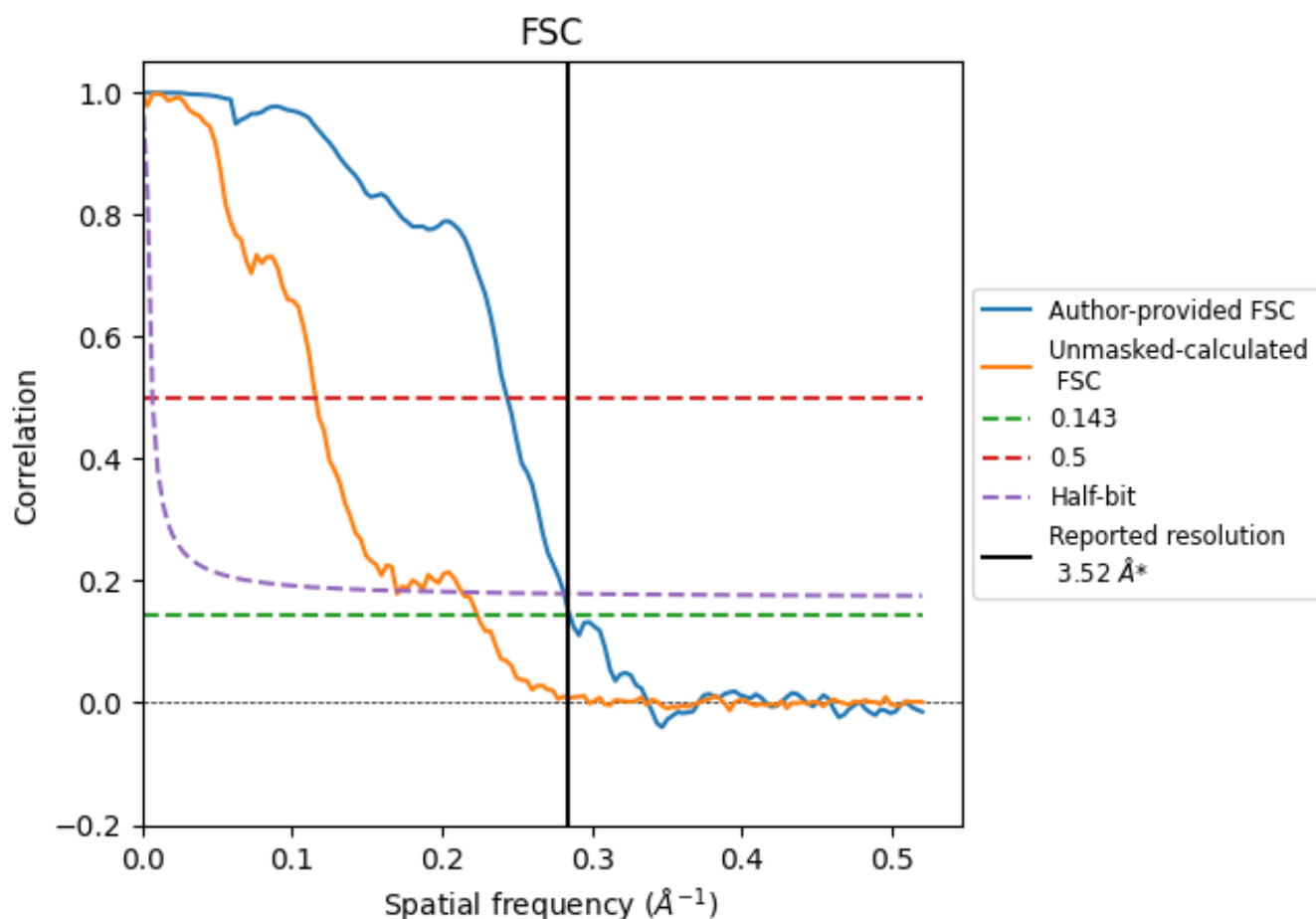


\*Reported resolution corresponds to spatial frequency of 0.284  $\text{\AA}^{-1}$

## 8 Fourier-Shell correlation [i](#)

Fourier-Shell Correlation (FSC) is the most commonly used method to estimate the resolution of single-particle and subtomogram-averaged maps. The shape of the curve depends on the imposed symmetry, mask and whether or not the two 3D reconstructions used were processed from a common reference. The reported resolution is shown as a black line. A curve is displayed for the half-bit criterion in addition to lines showing the 0.143 gold standard cut-off and 0.5 cut-off.

### 8.1 FSC [i](#)



\*Reported resolution corresponds to spatial frequency of 0.284  $\text{\AA}^{-1}$

## 8.2 Resolution estimates [i](#)

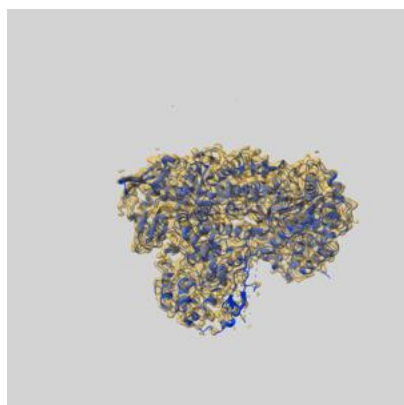
Resolution estimate (Å)	Estimation criterion (FSC cut-off)		
	0.143	0.5	Half-bit
Reported by author	3.52	-	-
Author-provided FSC curve	3.51	4.11	3.55
Unmasked-calculated*	4.47	8.64	5.90

\*Resolution estimate based on FSC curve calculated by comparison of deposited half-maps. The value from deposited half-maps intersecting FSC 0.143 CUT-OFF 4.47 differs from the reported value 3.52 by more than 10 %

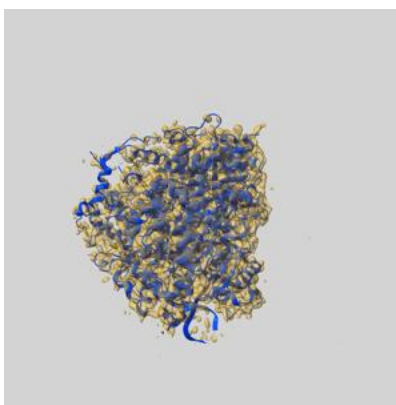
## 9 Map-model fit [i](#)

This section contains information regarding the fit between EMDB map EMD-10368 and PDB model 6T2C. Per-residue inclusion information can be found in section [3](#) on page [7](#).

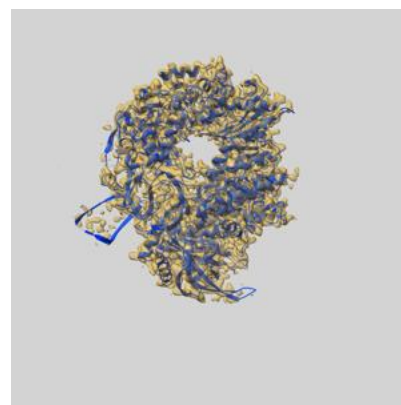
### 9.1 Map-model overlay [i](#)



X



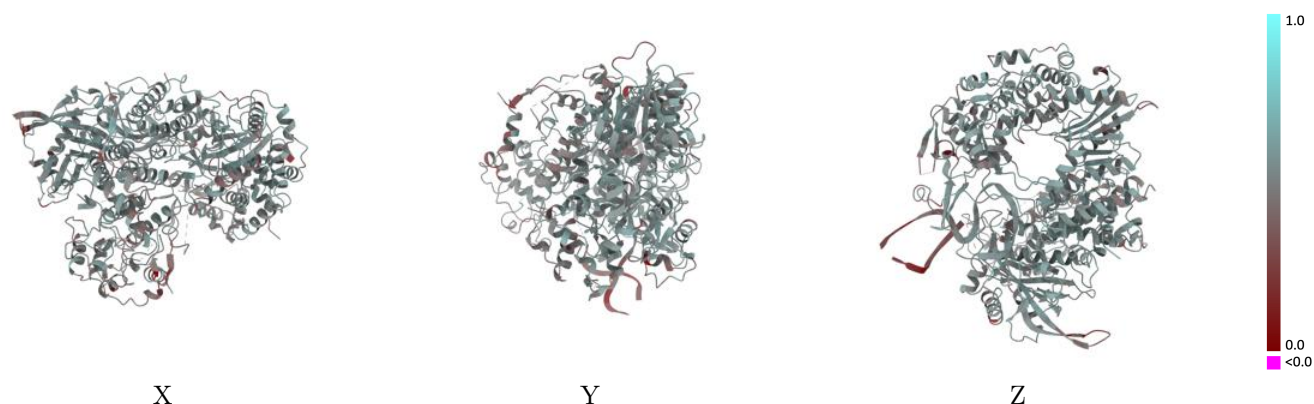
Y



Z

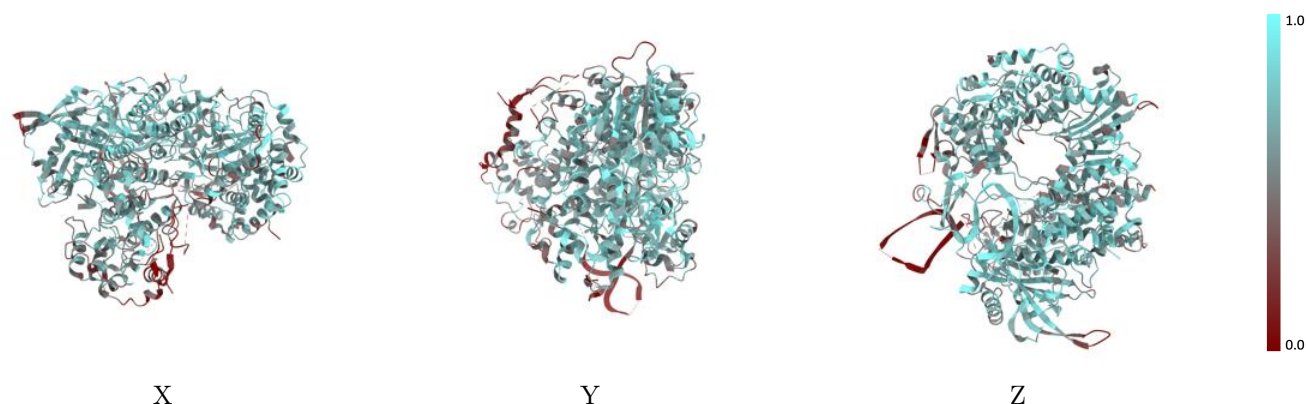
The images above show the 3D surface view of the map at the recommended contour level 0.05 at 50% transparency in yellow overlaid with a ribbon representation of the model coloured in blue. These images allow for the visual assessment of the quality of fit between the atomic model and the map.

## 9.2 Q-score mapped to coordinate model [i](#)



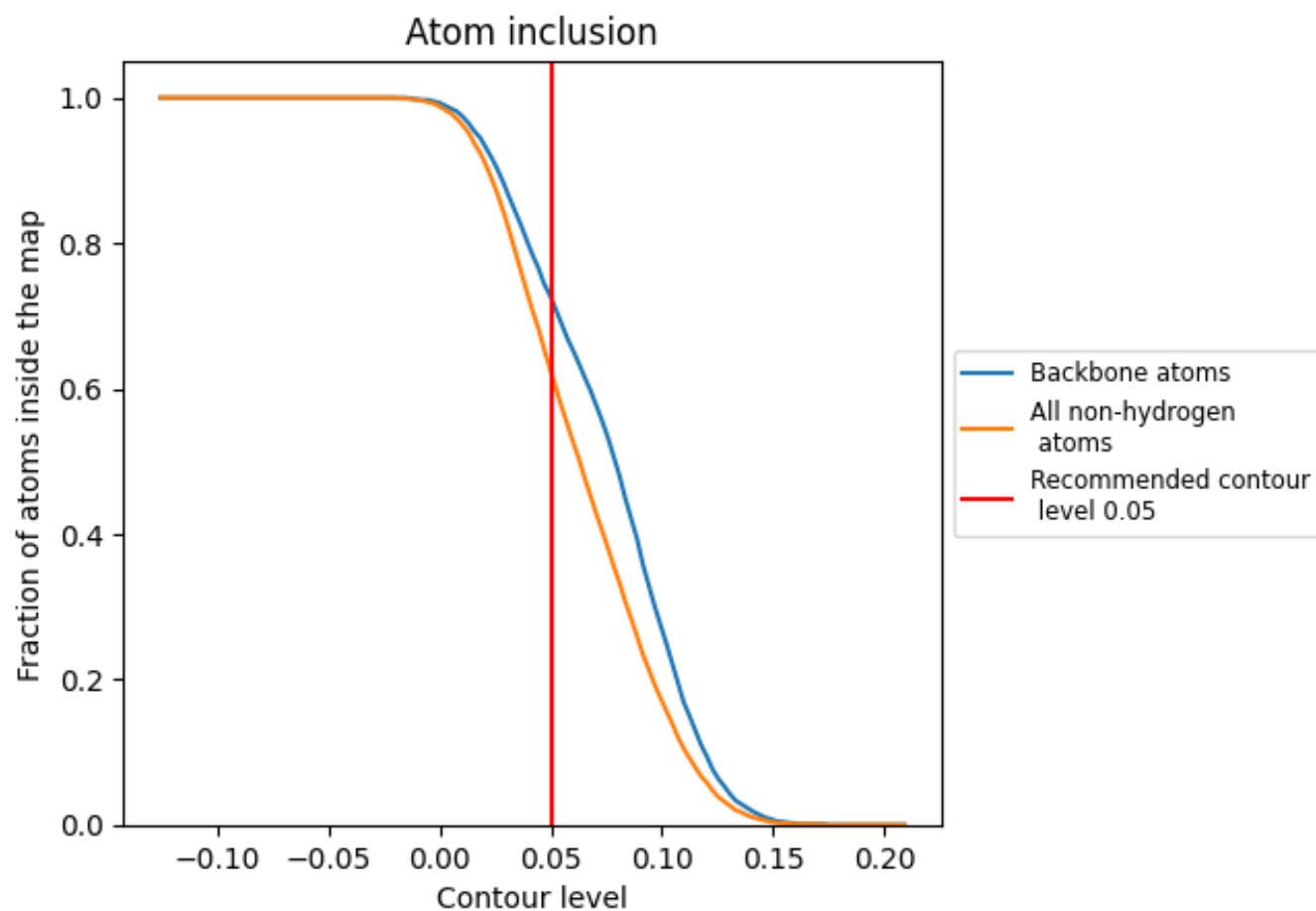
The images above show the model with each residue coloured according its Q-score. This shows their resolvability in the map with higher Q-score values reflecting better resolvability. Please note: Q-score is calculating the resolvability of atoms, and thus high values are only expected at resolutions at which atoms can be resolved. Low Q-score values may therefore be expected for many entries.

## 9.3 Atom inclusion mapped to coordinate model [i](#)



The images above show the model with each residue coloured according to its atom inclusion. This shows to what extent they are inside the map at the recommended contour level (0.05).

## 9.4 Atom inclusion [i](#)



At the recommended contour level, 73% of all backbone atoms, 62% of all non-hydrogen atoms, are inside the map.

9.5 Map-model fit summary ⓘ

The table lists the average atom inclusion at the recommended contour level (0.05) and Q-score for the entire model and for each chain.

Chain	Atom inclusion	Q-score
All	<div></div> 0.6240	<div></div> 0.5080
A	<div></div> 0.6740	<div></div> 0.5210
B	<div></div> 0.6510	<div></div> 0.5160
C	<div></div> 0.3580	<div></div> 0.4590
V	<div></div> 0.4700	<div></div> 0.4250

