



Full wwPDB X-ray Structure Validation Report ⓘ

Sep 24, 2025 – 02:29 am BST

PDB ID : 6Y5P / pdb_00006y5p
Title : RING-DTC domain of Deltex1 bound to NAD
Authors : Gabrielsen, M.; Buetow, L.; Huang, D.T.
Deposited on : 2020-02-25
Resolution : 1.74 Å(reported)

This is a Full wwPDB X-ray Structure Validation Report for a publicly released PDB entry.

We welcome your comments at validation@mail.wwpdb.org

A user guide is available at

<https://www.wwpdb.org/validation/2017/XrayValidationReportHelp>

with specific help available everywhere you see the ⓘ symbol.

The types of validation reports are described at

<http://www.wwpdb.org/validation/2017/FAQs#types>.

The following versions of software and data (see [references ⓘ](#)) were used in the production of this report:

MolProbity : 4-5-2 with Phenix2.0
Mogul : 1.8.4, CSD as541be (2020)
Xtriage (Phenix) : 2.0
EDS : 3.0
buster-report : 1.1.7 (2018)
Percentile statistics : 20231227.v01 (using entries in the PDB archive December 27th 2023)
CCP4 : 9.0.010 (Gargrove)
Density-Fitness : 1.0.12
Ideal geometry (proteins) : Engh & Huber (2001)
Ideal geometry (DNA, RNA) : Parkinson et al. (1996)
Validation Pipeline (wwPDB-VP) : 2.46

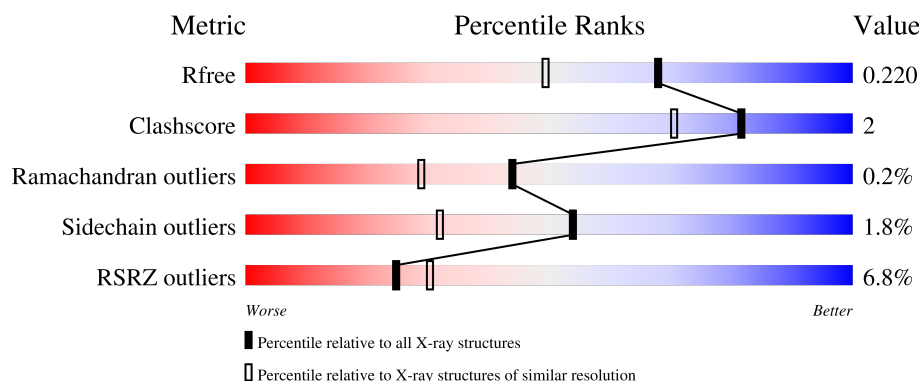
1 Overall quality at a glance

The following experimental techniques were used to determine the structure:

X-RAY DIFFRACTION

The reported resolution of this entry is 1.74 Å.

Percentile scores (ranging between 0-100) for global validation metrics of the entry are shown in the following graphic. The table shows the number of entries on which the scores are based.



Metric	Whole archive (#Entries)	Similar resolution (#Entries, resolution range(Å))
R_{free}	164625	1043 (1.74-1.74)
Clashscore	180529	1119 (1.74-1.74)
Ramachandran outliers	177936	1112 (1.74-1.74)
Sidechain outliers	177891	1112 (1.74-1.74)
RSRZ outliers	164620	1043 (1.74-1.74)

The table below summarises the geometric issues observed across the polymeric chains and their fit to the electron density. The red, orange, yellow and green segments of the lower bar indicate the fraction of residues that contain outliers for ≥ 3 , 2, 1 and 0 types of geometric quality criteria respectively. A grey segment represents the fraction of residues that are not modelled. The numeric value for each fraction is indicated below the corresponding segment, with a dot representing fractions $\leq 5\%$. The upper red bar (where present) indicates the fraction of residues that have poor fit to the electron density. The numeric value is given above the bar.

Mol	Chain	Length	Quality of chain
1	A	235	<div> <div>3%</div> <div>92%</div> <div>5%</div> </div>
1	B	235	<div> <div>11%</div> <div>92%</div> <div>5%</div> </div>

The following table lists non-polymeric compounds, carbohydrate monomers and non-standard residues in protein, DNA, RNA chains that are outliers for geometric or electron-density-fit criteria:

Mol	Type	Chain	Res	Chirality	Geometry	Clashes	Electron density
3	EDO	A	702	-	-	-	X

2 Entry composition [i](#)

There are 5 unique types of molecules in this entry. The entry contains 7788 atoms, of which 3645 are hydrogens and 0 are deuteriums.

In the tables below, the ZeroOcc column contains the number of atoms modelled with zero occupancy, the AltConf column contains the number of residues with at least one atom in alternate conformation and the Trace column contains the number of residues modelled with at most 2 atoms.

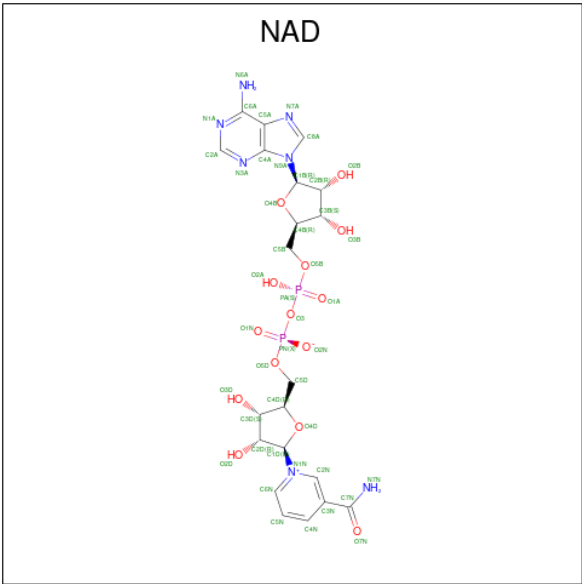
- Molecule 1 is a protein called E3 ubiquitin-protein ligase DTX1.

Mol	Chain	Residues	Atoms						ZeroOcc	AltConf	Trace
1	A	228	Total	C	H	N	O	S	0	3	0
			3572	1129	1772	325	333	13			
1	B	229	Total	C	H	N	O	S	0	2	0
			3572	1129	1773	325	333	12			

There are 4 discrepancies between the modelled and reference sequences:

Chain	Residue	Modelled	Actual	Comment	Reference
A	386	GLY	-	expression tag	UNP Q86Y01
A	387	SER	-	expression tag	UNP Q86Y01
B	386	GLY	-	expression tag	UNP Q86Y01
B	387	SER	-	expression tag	UNP Q86Y01

- Molecule 2 is NICOTINAMIDE-ADENINE-DINUCLEOTIDE (CCD ID: NAD) (formula: C₂₁H₂₇N₇O₁₄P₂) (labeled as "Ligand of Interest" by depositor).



Mol	Chain	Residues	Atoms					ZeroOcc	AltConf
2	A	1	Total	C	H	N	O	P	
			70	21	26	7	14	2	
2	B	1	Total	C	H	N	O	P	
			70	21	26	7	14	2	

- Molecule 3 is 1,2-ETHANEDIOL (CCD ID: EDO) (formula: C₂H₆O₂).



Mol	Chain	Residues	Atoms				ZeroOcc	AltConf
3	A	1	Total	C	H	O		
			10	2	6	2	0	0
3	A	1	Total	C	H	O		
			10	2	6	2	0	0
3	A	1	Total	C	H	O		
			10	2	6	2	0	0
3	A	1	Total	C	H	O		
			10	2	6	2	0	0
3	A	1	Total	C	H	O		
			10	2	6	2	0	0
3	B	1	Total	C	H	O		
			10	2	6	2	0	0
3	B	1	Total	C	H	O		
			10	2	6	2	0	0

- Molecule 4 is ZINC ION (CCD ID: ZN) (formula: Zn).

Mol	Chain	Residues	Atoms		ZeroOcc	AltConf
4	A	2	Total 2	Zn 2	0	0
4	B	2	Total 2	Zn 2	0	0

- Molecule 5 is water.

Mol	Chain	Residues	Atoms		ZeroOcc	AltConf
5	A	247	Total 247	O 247	0	0
5	B	173	Total 173	O 173	0	0

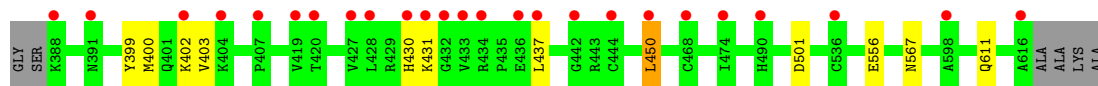
3 Residue-property plots [i](#)

These plots are drawn for all protein, RNA, DNA and oligosaccharide chains in the entry. The first graphic for a chain summarises the proportions of the various outlier classes displayed in the second graphic. The second graphic shows the sequence view annotated by issues in geometry and electron density. Residues are color-coded according to the number of geometric quality criteria for which they contain at least one outlier: green = 0, yellow = 1, orange = 2 and red = 3 or more. A red dot above a residue indicates a poor fit to the electron density ($RSRZ > 2$). Stretches of 2 or more consecutive residues without any outlier are shown as a green connector. Residues present in the sample, but not in the model, are shown in grey.

- Molecule 1: E3 ubiquitin-protein ligase DTX1



- Molecule 1: E3 ubiquitin-protein ligase DTX1



4 Data and refinement statistics

Property	Value	Source
Space group	P 21 21 21	Depositor
Cell constants a, b, c, α , β , γ	66.85Å 85.25Å 130.95Å 90.00° 90.00° 90.00°	Depositor
Resolution (Å)	65.47 – 1.74 65.47 – 1.74	Depositor EDS
% Data completeness (in resolution range)	99.8 (65.47-1.74) 99.9 (65.47-1.74)	Depositor EDS
R_{merge}	0.06	Depositor
R_{sym}	(Not available)	Depositor
$\langle I/\sigma(I) \rangle$ ¹	1.54 (at 1.74Å)	Xtriage
Refinement program	PHENIX 1.12_2829	Depositor
R, R_{free}	0.185 , 0.214 0.191 , 0.220	Depositor DCC
R_{free} test set	3752 reflections (4.84%)	wwPDB-VP
Wilson B-factor (Å ²)	27.1	Xtriage
Anisotropy	0.315	Xtriage
Bulk solvent k_{sol} (e/Å ³), B_{sol} (Å ²)	0.41 , 44.8	EDS
L-test for twinning ²	$\langle L \rangle = 0.50$, $\langle L^2 \rangle = 0.33$	Xtriage
Estimated twinning fraction	No twinning to report.	Xtriage
F_o, F_c correlation	0.96	EDS
Total number of atoms	7788	wwPDB-VP
Average B, all atoms (Å ²)	44.0	wwPDB-VP

Xtriage's analysis on translational NCS is as follows: *The largest off-origin peak in the Patterson function is 3.86% of the height of the origin peak. No significant pseudotranslation is detected.*

¹Intensities estimated from amplitudes.

²Theoretical values of $\langle |L| \rangle$, $\langle L^2 \rangle$ for acentric reflections are 0.5, 0.333 respectively for untwinned datasets, and 0.375, 0.2 for perfectly twinned datasets.

5 Model quality

5.1 Standard geometry

Bond lengths and bond angles in the following residue types are not validated in this section: NAD, ZN, EDO

The Z score for a bond length (or angle) is the number of standard deviations the observed value is removed from the expected value. A bond length (or angle) with $|Z| > 5$ is considered an outlier worth inspection. RMSZ is the root-mean-square of all Z scores of the bond lengths (or angles).

Mol	Chain	Bond lengths		Bond angles	
		RMSZ	# Z >5	RMSZ	# Z >5
1	A	0.48	0/1858	0.63	0/2518
1	B	0.43	0/1857	0.60	0/2517
All	All	0.46	0/3715	0.61	0/5035

There are no bond length outliers.

There are no bond angle outliers.

There are no chirality outliers.

There are no planarity outliers.

5.2 Too-close contacts

In the following table, the Non-H and H(model) columns list the number of non-hydrogen atoms and hydrogen atoms in the chain respectively. The H(added) column lists the number of hydrogen atoms added and optimized by MolProbity. The Clashes column lists the number of clashes within the asymmetric unit, whereas Symm-Clashes lists symmetry-related clashes.

Mol	Chain	Non-H	H(model)	H(added)	Clashes	Symm-Clashes
1	A	1800	1772	1762	6	0
1	B	1799	1773	1763	6	4
2	A	44	26	25	2	0
2	B	44	26	24	4	4
3	A	24	36	36	2	0
3	B	8	12	12	0	0
4	A	2	0	0	0	0
4	B	2	0	0	0	0
5	A	247	0	0	2	3
5	B	173	0	0	6	3
All	All	4143	3645	3622	18	8

The all-atom clashscore is defined as the number of clashes found per 1000 atoms (including hydrogen atoms). The all-atom clashscore for this structure is 2.

All (18) close contacts within the same asymmetric unit are listed below, sorted by their clash magnitude.

Atom-1	Atom-2	Interatomic distance (Å)	Clash overlap (Å)
2:B:701:NAD:C1B	2:B:701:NAD:O4B	1.64	1.19
2:A:701:NAD:C1D	2:A:701:NAD:O4D	1.63	1.11
1:B:611:GLN:OE1	5:B:801:HOH:O	2.08	0.71
1:A:448:TYR:CE1	3:A:707:EDO:H11	2.33	0.63
1:B:611:GLN:CD	5:B:801:HOH:O	2.43	0.61
1:B:567:ASN:HB2	2:B:701:NAD:O1A	2.08	0.54
1:B:556:GLU:OE2	5:B:802:HOH:O	2.17	0.54
1:A:407:PRO:HD2	1:A:447:MET:HE1	1.92	0.52
3:A:705:EDO:O2	5:A:801:HOH:O	2.19	0.52
1:B:400:MET:HE3	1:B:450:LEU:HD12	1.92	0.50
1:A:432:GLY:HA2	5:A:890:HOH:O	2.14	0.47
1:A:433:VAL:HG11	1:A:450:LEU:HB3	1.98	0.45
2:A:701:NAD:H52N	2:A:701:NAD:H6N	1.99	0.45
2:B:701:NAD:N3A	5:B:805:HOH:O	2.36	0.44
1:A:438:VAL:HG11	1:A:447:MET:CE	2.48	0.44
1:A:392:PRO:HA	1:A:457:TYR:CD2	2.53	0.43
2:B:701:NAD:H4D	5:B:838:HOH:O	2.19	0.43
1:B:399:TYR:O	5:B:803:HOH:O	2.22	0.41

All (8) symmetry-related close contacts are listed below. The label for Atom-2 includes the symmetry operator and encoded unit-cell translations to be applied.

Atom-1	Atom-2	Interatomic distance (Å)	Clash overlap (Å)
1:B:501:ASP:OD2	2:B:701:NAD:N7N[4_565]	1.29	0.91
1:B:501:ASP:OD2	2:B:701:NAD:H71N[4_565]	1.43	0.17
5:A:1023:HOH:O	5:B:876:HOH:O[4_465]	2.10	0.10
5:A:1015:HOH:O	5:B:861:HOH:O[4_465]	2.11	0.09
1:B:501:ASP:OD2	2:B:701:NAD:C7N[4_565]	2.12	0.08
5:A:813:HOH:O	5:A:966:HOH:O[4_465]	2.13	0.07
5:B:933:HOH:O	5:B:942:HOH:O[4_465]	2.15	0.05
1:B:501:ASP:OD2	2:B:701:NAD:H72N[4_565]	1.60	0.00

5.3 Torsion angles

5.3.1 Protein backbone

In the following table, the Percentiles column shows the percent Ramachandran outliers of the chain as a percentile score with respect to all X-ray entries followed by that with respect to entries of similar resolution.

The Analysed column shows the number of residues for which the backbone conformation was analysed, and the total number of residues.

Mol	Chain	Analysed	Favoured	Allowed	Outliers	Percentiles	
1	A	229/235 (97%)	226 (99%)	3 (1%)	0	100	100
1	B	229/235 (97%)	222 (97%)	6 (3%)	1 (0%)	30	16
All	All	458/470 (97%)	448 (98%)	9 (2%)	1 (0%)	44	29

All (1) Ramachandran outliers are listed below:

Mol	Chain	Res	Type
1	B	430	HIS

5.3.2 Protein sidechains

In the following table, the Percentiles column shows the percent sidechain outliers of the chain as a percentile score with respect to all X-ray entries followed by that with respect to entries of similar resolution.

The Analysed column shows the number of residues for which the sidechain conformation was analysed, and the total number of residues.

Mol	Chain	Analysed	Rotameric	Outliers	Percentiles	
1	A	200/199 (100%)	198 (99%)	2 (1%)	73	61
1	B	199/199 (100%)	194 (98%)	5 (2%)	42	19
All	All	399/398 (100%)	392 (98%)	7 (2%)	54	32

All (7) residues with a non-rotameric sidechain are listed below:

Mol	Chain	Res	Type
1	A	462	LYS
1	A	526	LYS
1	B	402	LYS
1	B	403	VAL
1	B	431	LYS

Continued on next page...

Continued from previous page...

Mol	Chain	Res	Type
1	B	437	LEU
1	B	450	LEU

Sometimes sidechains can be flipped to improve hydrogen bonding and reduce clashes. All (2) such sidechains are listed below:

Mol	Chain	Res	Type
1	A	503	GLN
1	B	503	GLN

5.3.3 RNA [i](#)

There are no RNA molecules in this entry.

5.4 Non-standard residues in protein, DNA, RNA chains [i](#)

There are no non-standard protein/DNA/RNA residues in this entry.

5.5 Carbohydrates [i](#)

There are no oligosaccharides in this entry.

5.6 Ligand geometry [i](#)

Of 14 ligands modelled in this entry, 4 are monoatomic - leaving 10 for Mogul analysis.

In the following table, the Counts columns list the number of bonds (or angles) for which Mogul statistics could be retrieved, the number of bonds (or angles) that are observed in the model and the number of bonds (or angles) that are defined in the Chemical Component Dictionary. The Link column lists molecule types, if any, to which the group is linked. The Z score for a bond length (or angle) is the number of standard deviations the observed value is removed from the expected value. A bond length (or angle) with $|Z| > 2$ is considered an outlier worth inspection. RMSZ is the root-mean-square of all Z scores of the bond lengths (or angles).

Mol	Type	Chain	Res	Link	Bond lengths			Bond angles		
					Counts	RMSZ	$\# Z > 2$	Counts	RMSZ	$\# Z > 2$
3	EDO	A	705	-	3,3,3	0.54	0	2,2,2	0.25	0
2	NAD	B	701	-	42,48,48	5.45	17 (40%)	50,73,73	1.77	6 (12%)
3	EDO	A	706	-	3,3,3	0.33	0	2,2,2	0.42	0
3	EDO	B	703	-	3,3,3	0.44	0	2,2,2	0.39	0

Mol	Type	Chain	Res	Link	Bond lengths			Bond angles		
					Counts	RMSZ	# Z > 2	Counts	RMSZ	# Z > 2
3	EDO	A	707	-	3,3,3	0.38	0	2,2,2	0.48	0
3	EDO	A	704	-	3,3,3	0.42	0	2,2,2	0.26	0
3	EDO	B	702	-	3,3,3	0.49	0	2,2,2	0.19	0
3	EDO	A	702	-	3,3,3	0.47	0	2,2,2	0.32	0
2	NAD	A	701	-	42,48,48	5.22	15 (35%)	50,73,73	1.69	7 (14%)
3	EDO	A	703	-	3,3,3	0.55	0	2,2,2	0.20	0

In the following table, the Chirals column lists the number of chiral outliers, the number of chiral centers analysed, the number of these observed in the model and the number defined in the Chemical Component Dictionary. Similar counts are reported in the Torsion and Rings columns. '-' means no outliers of that kind were identified.

Mol	Type	Chain	Res	Link	Chirals	Torsions	Rings
3	EDO	A	705	-	-	1/1/1/1	-
2	NAD	B	701	-	-	5/26/62/62	0/5/5/5
3	EDO	A	706	-	-	0/1/1/1	-
3	EDO	B	703	-	-	0/1/1/1	-
3	EDO	A	707	-	-	1/1/1/1	-
3	EDO	A	704	-	-	1/1/1/1	-
3	EDO	B	702	-	-	1/1/1/1	-
3	EDO	A	702	-	-	1/1/1/1	-
2	NAD	A	701	-	-	7/26/62/62	0/5/5/5
3	EDO	A	703	-	-	0/1/1/1	-

All (32) bond length outliers are listed below:

Mol	Chain	Res	Type	Atoms	Z	Observed(Å)	Ideal(Å)
2	B	701	NAD	O4B-C1B	16.50	1.64	1.41
2	A	701	NAD	O4D-C1D	16.13	1.63	1.41
2	B	701	NAD	O4D-C1D	15.98	1.63	1.41
2	B	701	NAD	C2B-C1B	-15.36	1.30	1.53
2	A	701	NAD	C2B-C1B	-14.73	1.31	1.53
2	A	701	NAD	O4B-C1B	14.71	1.61	1.41
2	B	701	NAD	C2D-C1D	-14.02	1.32	1.53
2	A	701	NAD	C2D-C1D	-13.67	1.33	1.53
2	B	701	NAD	C7N-N7N	9.45	1.51	1.33
2	A	701	NAD	C7N-N7N	9.11	1.50	1.33
2	B	701	NAD	O4B-C4B	-6.38	1.30	1.45
2	A	701	NAD	O4B-C4B	-6.36	1.30	1.45
2	A	701	NAD	O4D-C4D	-5.61	1.32	1.45
2	B	701	NAD	O4D-C4D	-5.40	1.32	1.45
2	B	701	NAD	O2B-C2B	4.82	1.54	1.43

Continued on next page...

Continued from previous page...

Mol	Chain	Res	Type	Atoms	Z	Observed(Å)	Ideal(Å)
2	A	701	NAD	O2B-C2B	4.15	1.52	1.43
2	B	701	NAD	O2D-C2D	3.75	1.51	1.43
2	B	701	NAD	O3D-C3D	-3.58	1.34	1.43
2	A	701	NAD	C2N-N1N	3.55	1.39	1.35
2	A	701	NAD	O3D-C3D	-3.22	1.35	1.43
2	B	701	NAD	C6A-N6A	3.21	1.45	1.34
2	B	701	NAD	C2N-N1N	3.20	1.38	1.35
2	A	701	NAD	O2D-C2D	3.16	1.50	1.43
2	B	701	NAD	O3B-C3B	-2.95	1.36	1.43
2	A	701	NAD	C6A-N6A	2.93	1.44	1.34
2	B	701	NAD	O7N-C7N	-2.76	1.18	1.24
2	A	701	NAD	O7N-C7N	-2.61	1.19	1.24
2	A	701	NAD	O3B-C3B	-2.49	1.37	1.43
2	B	701	NAD	C5A-C4A	-2.33	1.34	1.40
2	A	701	NAD	C5A-C4A	-2.33	1.34	1.40
2	B	701	NAD	C2A-N3A	2.26	1.35	1.32
2	B	701	NAD	C5B-C4B	2.06	1.58	1.51

All (13) bond angle outliers are listed below:

Mol	Chain	Res	Type	Atoms	Z	Observed(°)	Ideal(°)
2	B	701	NAD	C5A-C6A-N6A	7.47	131.71	120.35
2	A	701	NAD	C5A-C6A-N6A	6.73	130.58	120.35
2	B	701	NAD	N6A-C6A-N1A	-5.11	107.97	118.57
2	B	701	NAD	N3A-C2A-N1A	-5.11	120.70	128.68
2	A	701	NAD	N3A-C2A-N1A	-5.04	120.80	128.68
2	A	701	NAD	N6A-C6A-N1A	-4.33	109.58	118.57
2	B	701	NAD	PN-O3-PA	-3.79	119.82	132.83
2	A	701	NAD	C3N-C7N-N7N	2.77	121.08	117.75
2	A	701	NAD	C6N-N1N-C2N	-2.41	119.77	121.97
2	A	701	NAD	C3B-C2B-C1B	2.25	104.37	100.98
2	B	701	NAD	C3B-C2B-C1B	2.23	104.33	100.98
2	A	701	NAD	O7N-C7N-N7N	-2.15	119.53	122.58
2	B	701	NAD	C3D-C2D-C1D	2.14	104.19	100.98

There are no chirality outliers.

All (17) torsion outliers are listed below:

Mol	Chain	Res	Type	Atoms
2	A	701	NAD	C5D-O5D-PN-O1N
2	A	701	NAD	C5D-O5D-PN-O2N
2	B	701	NAD	C5D-O5D-PN-O3

Continued on next page...

Continued from previous page...

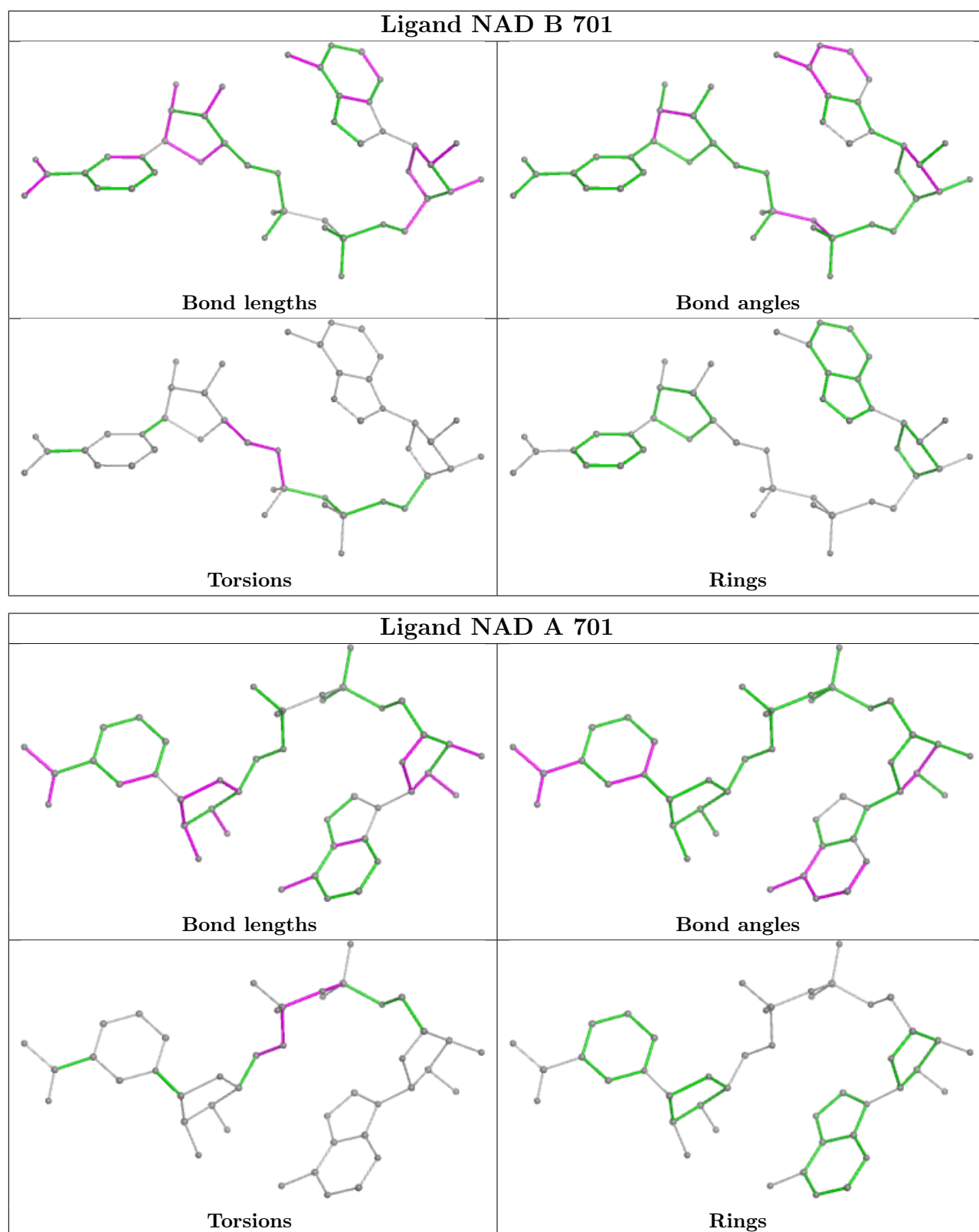
Mol	Chain	Res	Type	Atoms
2	B	701	NAD	C5D-O5D-PN-O2N
2	B	701	NAD	C3D-C4D-C5D-O5D
3	A	705	EDO	O1-C1-C2-O2
2	B	701	NAD	O4D-C4D-C5D-O5D
3	A	702	EDO	O1-C1-C2-O2
2	B	701	NAD	C4D-C5D-O5D-PN
3	A	707	EDO	O1-C1-C2-O2
2	A	701	NAD	C5D-O5D-PN-O3
3	A	704	EDO	O1-C1-C2-O2
2	A	701	NAD	PA-O3-PN-O5D
3	B	702	EDO	O1-C1-C2-O2
2	A	701	NAD	C4D-C5D-O5D-PN
2	A	701	NAD	PN-O3-PA-O1A
2	A	701	NAD	PN-O3-PA-O2A

There are no ring outliers.

4 monomers are involved in 12 short contacts:

Mol	Chain	Res	Type	Clashes	Symm-Clashes
3	A	705	EDO	1	0
2	B	701	NAD	4	4
3	A	707	EDO	1	0
2	A	701	NAD	2	0

The following is a two-dimensional graphical depiction of Mogul quality analysis of bond lengths, bond angles, torsion angles, and ring geometry for all instances of the Ligand of Interest. In addition, ligands with molecular weight > 250 and outliers as shown on the validation Tables will also be included. For torsion angles, if less than 5% of the Mogul distribution of torsion angles is within 10 degrees of the torsion angle in question, then that torsion angle is considered an outlier. Any bond that is central to one or more torsion angles identified as an outlier by Mogul will be highlighted in the graph. For rings, the root-mean-square deviation (RMSD) between the ring in question and similar rings identified by Mogul is calculated over all ring torsion angles. If the average RMSD is greater than 60 degrees and the minimal RMSD between the ring in question and any Mogul-identified rings is also greater than 60 degrees, then that ring is considered an outlier. The outliers are highlighted in purple. The color gray indicates Mogul did not find sufficient equivalents in the CSD to analyse the geometry.



5.7 Other polymers [\(i\)](#)

There are no such residues in this entry.

5.8 Polymer linkage issues ⓘ

There are no chain breaks in this entry.

6 Fit of model and data

6.1 Protein, DNA and RNA chains

In the following table, the column labelled ‘#RSRZ > 2’ contains the number (and percentage) of RSRZ outliers, followed by percent RSRZ outliers for the chain as percentile scores relative to all X-ray entries and entries of similar resolution. The OWAB column contains the minimum, median, 95th percentile and maximum values of the occupancy-weighted average B-factor per residue. The column labelled ‘Q < 0.9’ lists the number of (and percentage) of residues with an average occupancy less than 0.9.

Mol	Chain	Analysed	<RSRZ>	#RSRZ>2	OWAB(Å ²)	Q<0.9
1	A	228/235 (97%)	0.12	6 (2%) 57 64	14, 36, 61, 81	2 (0%)
1	B	229/235 (97%)	0.45	25 (10%) 12 17	17, 44, 78, 101	1 (0%)
All	All	457/470 (97%)	0.28	31 (6%) 25 30	14, 38, 72, 101	3 (0%)

All (31) RSRZ outliers are listed below:

Mol	Chain	Res	Type	RSRZ
1	B	536	CYS	6.0
1	B	616	ALA	5.4
1	B	444	CYS	5.1
1	B	430	HIS	4.0
1	B	432	GLY	3.6
1	B	404	LYS	3.4
1	A	459	ASN	3.3
1	B	433	VAL	3.1
1	A	615	GLU	3.0
1	B	434	ARG	3.0
1	B	431	LYS	2.9
1	A	388	LYS	2.8
1	B	437	LEU	2.8
1	B	427	VAL	2.7
1	B	468	CYS	2.5
1	B	402	LYS	2.5
1	B	428	LEU	2.4
1	B	450	LEU	2.4
1	B	419	VAL	2.4
1	A	461	ASN	2.3
1	A	569	THR	2.3
1	B	474	ILE	2.3
1	B	407	PRO	2.2
1	B	420	THR	2.1

Continued on next page...

Continued from previous page...

Mol	Chain	Res	Type	RSRZ
1	B	388	LYS	2.1
1	B	436	GLU	2.1
1	B	598	ALA	2.1
1	B	490	HIS	2.0
1	B	442	GLY	2.0
1	A	434	ARG	2.0
1	B	391	ASN	2.0

6.2 Non-standard residues in protein, DNA, RNA chains [i](#)

There are no non-standard protein/DNA/RNA residues in this entry.

6.3 Carbohydrates [i](#)

There are no oligosaccharides in this entry.

6.4 Ligands [i](#)

In the following table, the Atoms column lists the number of modelled atoms in the group and the number defined in the chemical component dictionary. The B-factors column lists the minimum, median, 95th percentile and maximum values of B factors of atoms in the group. The column labelled 'Q< 0.9' lists the number of atoms with occupancy less than 0.9.

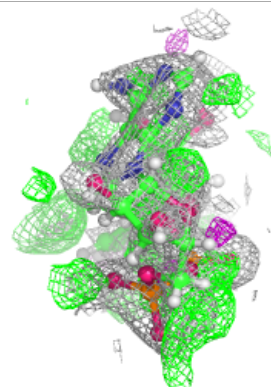
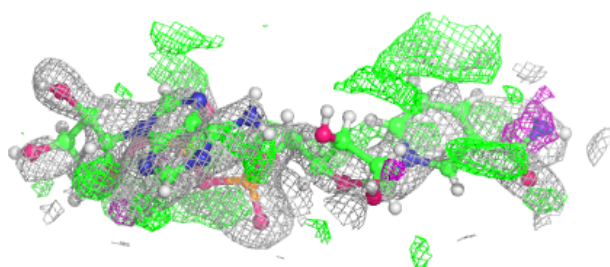
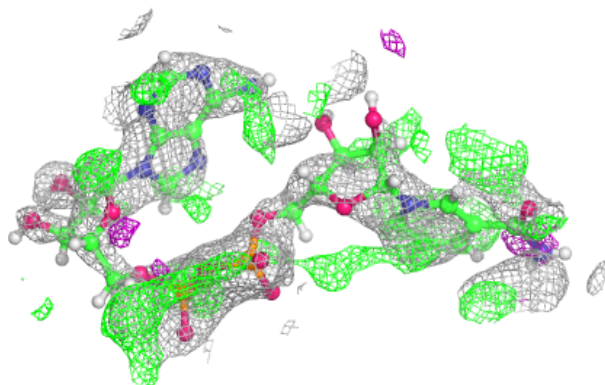
Mol	Type	Chain	Res	Atoms	RSCC	RSR	B-factors(Å ²)	Q<0.9
3	EDO	A	702	4/4	0.65	0.45	69,95,147,177	0
2	NAD	B	701	44/44	0.81	0.26	25,57,76,102	70
3	EDO	A	704	4/4	0.84	0.19	45,63,75,75	0
3	EDO	A	705	4/4	0.84	0.27	57,82,98,107	0
3	EDO	B	702	4/4	0.89	0.26	55,73,112,121	0
3	EDO	A	703	4/4	0.91	0.20	37,55,88,105	0
3	EDO	A	707	4/4	0.92	0.22	30,38,85,102	0
3	EDO	B	703	4/4	0.93	0.14	51,61,73,75	0
3	EDO	A	706	4/4	0.94	0.28	58,82,99,100	0
2	NAD	A	701	44/44	0.95	0.11	28,47,84,101	0
4	ZN	B	704	1/1	0.98	0.05	50,50,50,50	0
4	ZN	A	709	1/1	0.99	0.03	26,26,26,26	0
4	ZN	B	705	1/1	0.99	0.15	71,71,71,71	0
4	ZN	A	708	1/1	1.00	0.01	23,23,23,23	0

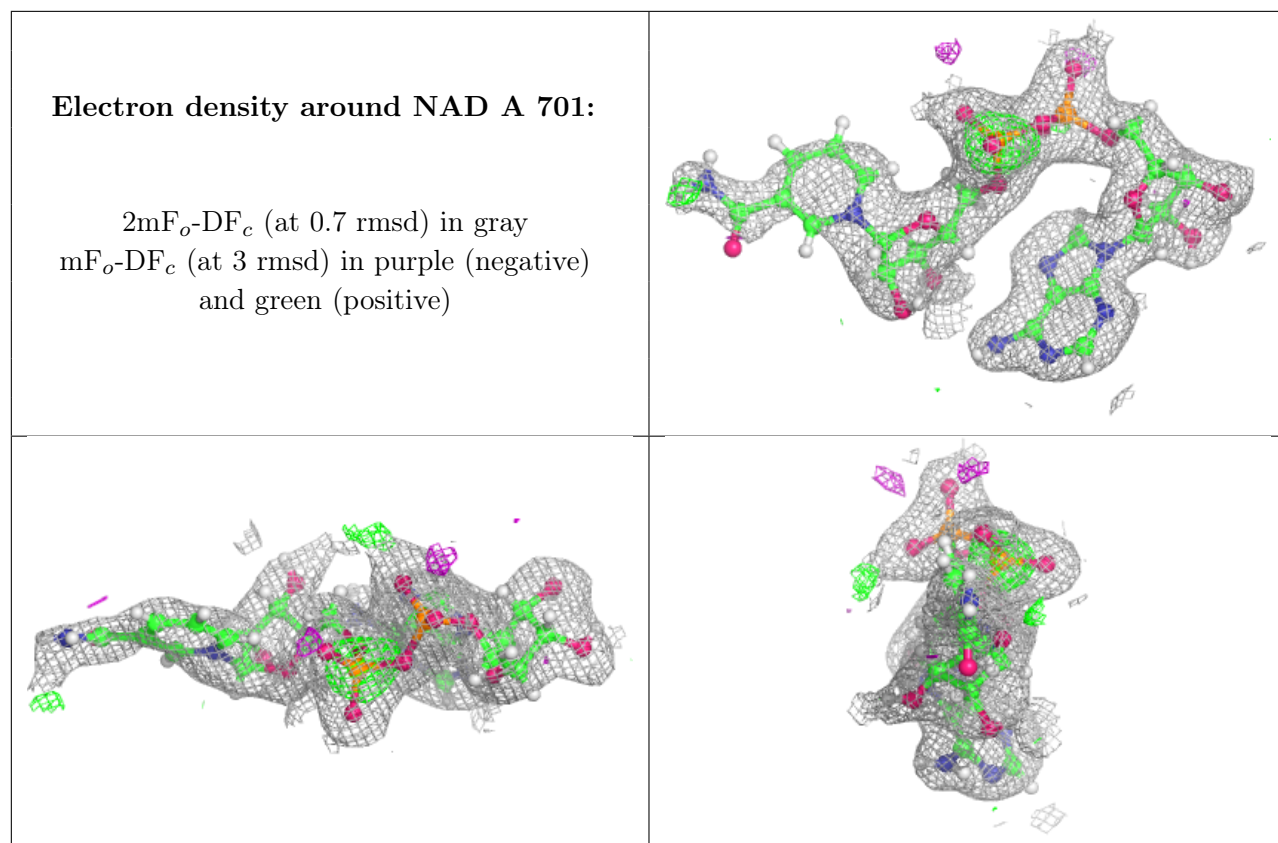
The following is a graphical depiction of the model fit to experimental electron density of all

instances of the Ligand of Interest. In addition, ligands with molecular weight > 250 and outliers as shown on the geometry validation Tables will also be included. Each fit is shown from different orientation to approximate a three-dimensional view.

Electron density around NAD B 701:

$2mF_o-DF_c$ (at 0.7 rmsd) in gray
 mF_o-DF_c (at 3 rmsd) in purple (negative)
and green (positive)





6.5 Other polymers ⓘ

There are no such residues in this entry.