



Full wwPDB X-ray Structure Validation Report ⓘ

Mar 9, 2026 – 04:07 PM UTC

PDB ID : 7C8T / pdb_00007c8t
Title : Complex Structure of SARS-CoV-2 3CL Protease with TG-0205221
Authors : Lee, C.C.; Wang, A.H.J.; Kuo, C.J.; Liang, P.H.
Deposited on : 2020-06-03
Resolution : 2.05 Å(reported)

This is a Full wwPDB X-ray Structure Validation Report for a publicly released PDB entry.

We welcome your comments at validation@mail.wwpdb.org

A user guide is available at

<https://www.wwpdb.org/validation/2017/XrayValidationReportHelp>

with specific help available everywhere you see the ⓘ symbol.

The types of validation reports are described at

<http://www.wwpdb.org/validation/2017/FAQs#types>.

The following versions of software and data (see [references ⓘ](#)) were used in the production of this report:

MolProbity : 4-5-2 with Phenix2.0
Mogul : 2022.3.0, CSD as543be (2022)
Xtriage (Phenix) : 2.0
EDS : 3.0
Buster-report : wwPDB partial adaption of 1.1.7 (2018)
Percentile statistics : 20250101.v01 (using entries in the PDB archive January 1st 2025)
CCP4 : 9.0.010 (Gargrove)
Density-Fitness : 1.0.12
Ideal geometry (proteins) : Engh & Huber (2001)
Ideal geometry (DNA, RNA) : Parkinson et al. (1996)
Validation Pipeline (wwPDB-VP) : 2.49

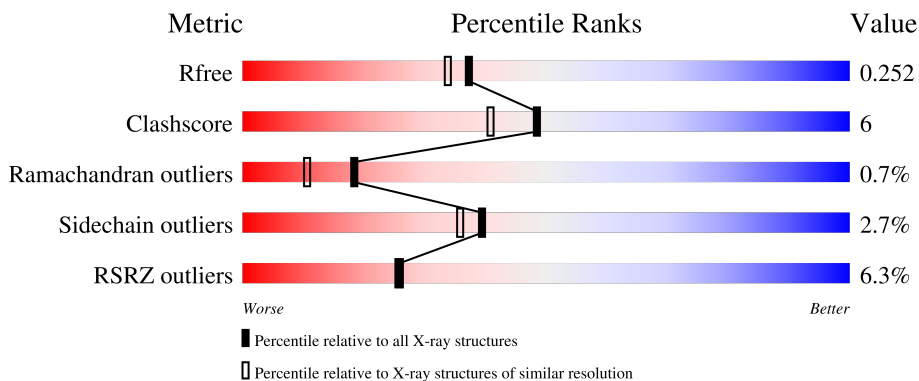
1 Overall quality at a glance

The following experimental techniques were used to determine the structure:

X-RAY DIFFRACTION

The reported resolution of this entry is 2.05 Å.

Percentile scores (ranging between 0-100) for global validation metrics of the entry are shown in the following graphic. The table shows the number of entries on which the scores are based.



Metric	Whole archive (#Entries)	Similar resolution (#Entries, resolution range(Å))
R_{free}	180053	2260 (2.04-2.04)
Clashscore	190562	2333 (2.04-2.04)
Ramachandran outliers	187476	2318 (2.04-2.04)
Sidechain outliers	187428	2318 (2.04-2.04)
RSRZ outliers	180081	2260 (2.04-2.04)

The table below summarises the geometric issues observed across the polymeric chains and their fit to the electron density. The red, orange, yellow and green segments of the lower bar indicate the fraction of residues that contain outliers for ≥ 3 , 2, 1 and 0 types of geometric quality criteria respectively. A grey segment represents the fraction of residues that are not modelled. The numeric value for each fraction is indicated below the corresponding segment, with a dot representing fractions $\leq 5\%$. The upper red bar (where present) indicates the fraction of residues that have poor fit to the electron density. The numeric value is given above the bar.

Mol	Chain	Length	Quality of chain
1	A	306	

2 Entry composition [i](#)

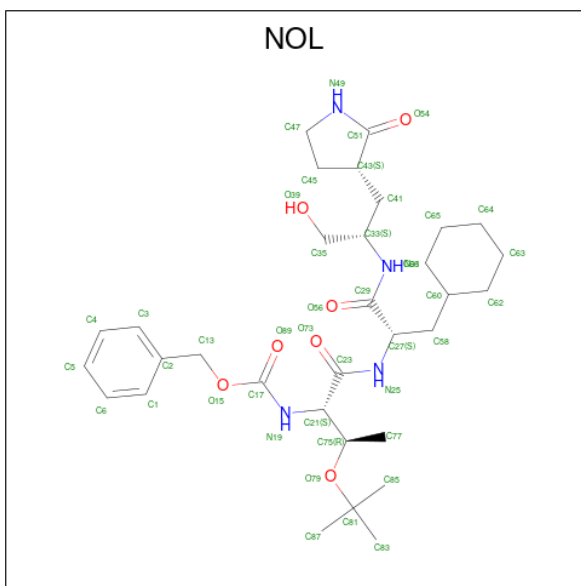
There are 3 unique types of molecules in this entry. The entry contains 2512 atoms, of which 0 are hydrogens and 0 are deuteriums.

In the tables below, the ZeroOcc column contains the number of atoms modelled with zero occupancy, the AltConf column contains the number of residues with at least one atom in alternate conformation and the Trace column contains the number of residues modelled with at most 2 atoms.

- Molecule 1 is a protein called 3C-like proteinase.

Mol	Chain	Residues	Atoms					ZeroOcc	AltConf	Trace
			Total	C	N	O	S			
1	A	300	2326	1477	396	431	22	0	0	0

- Molecule 2 is N-[(BENZYLOXY)CARBONYL]-O-(TERT-BUTYL)-L-THREONYL-3-CYCLOHEXYL-N-[(1S)-2-HYDROXY-1-[(3S)-2-OXOPYRROLIDIN-3-YL]METHYL}ETHYL]-L-ALANINAMIDE (CCD ID: NOL) (formula: C₃₂H₅₀N₄O₇) (labeled as "Ligand of Interest" by depositor).



Mol	Chain	Residues	Atoms				ZeroOcc	AltConf
			Total	C	N	O		
2	A	1	43	32	4	7	0	0

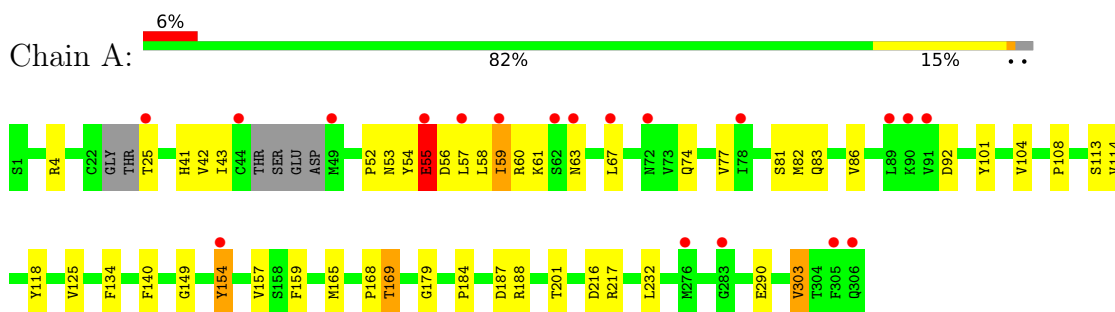
- Molecule 3 is water.

Mol	Chain	Residues	Atoms		ZeroOcc	AltConf
3	A	143	Total	O	0	0
			143	143		

3 Residue-property plots [i](#)

These plots are drawn for all protein, RNA, DNA and oligosaccharide chains in the entry. The first graphic for a chain summarises the proportions of the various outlier classes displayed in the second graphic. The second graphic shows the sequence view annotated by issues in geometry and electron density. Residues are color-coded according to the number of geometric quality criteria for which they contain at least one outlier: green = 0, yellow = 1, orange = 2 and red = 3 or more. A red dot above a residue indicates a poor fit to the electron density ($RSRZ > 2$). Stretches of 2 or more consecutive residues without any outlier are shown as a green connector. Residues present in the sample, but not in the model, are shown in grey.

- Molecule 1: 3C-like proteinase



4 Data and refinement statistics

Property	Value	Source
Space group	P 61 2 2	Depositor
Cell constants a, b, c, α , β , γ	104.42Å 104.42Å 89.89Å 90.00° 90.00° 120.00°	Depositor
Resolution (Å)	24.17 – 2.05 24.17 – 2.05	Depositor EDS
% Data completeness (in resolution range)	97.2 (24.17-2.05) 97.2 (24.17-2.05)	Depositor EDS
R_{merge}	(Not available)	Depositor
R_{sym}	(Not available)	Depositor
$\langle I/\sigma(I) \rangle$ ¹	6.71 (at 2.04Å)	Xtrriage
Refinement program	REFMAC 5.8.0258	Depositor
R, R_{free}	0.184 , 0.233 (Not available) , 0.252	Depositor DCC
R_{free} test set	898 reflections (4.79%)	wwPDB-VP
Wilson B-factor (Å ²)	23.6	Xtrriage
Anisotropy	0.118	Xtrriage
Bulk solvent k_{sol} (e/Å ³), B_{sol} (Å ²)	0.38 , 51.4	EDS
L-test for twinning ²	$\langle L \rangle = 0.50$, $\langle L^2 \rangle = 0.34$	Xtrriage
Estimated twinning fraction	No twinning to report.	Xtrriage
F_o, F_c correlation	0.94	EDS
Total number of atoms	2512	wwPDB-VP
Average B, all atoms (Å ²)	32.0	wwPDB-VP

Xtrriage's analysis on translational NCS is as follows: *The largest off-origin peak in the Patterson function is 3.70% of the height of the origin peak. No significant pseudotranslation is detected.*

¹Intensities estimated from amplitudes.

²Theoretical values of $\langle |L| \rangle$, $\langle L^2 \rangle$ for acentric reflections are 0.5, 0.333 respectively for untwinned datasets, and 0.375, 0.2 for perfectly twinned datasets.

5 Model quality [i](#)

5.1 Standard geometry [i](#)

Bond lengths and bond angles in the following residue types are not validated in this section: NOL

The Z score for a bond length (or angle) is the number of standard deviations the observed value is removed from the expected value. A bond length (or angle) with $|Z| > 5$ is considered an outlier worth inspection. RMSZ is the root-mean-square of all Z scores of the bond lengths (or angles).

Mol	Chain	Bond lengths		Bond angles	
		RMSZ	# Z >5	RMSZ	# Z >5
1	A	1.24	5/2377 (0.2%)	1.42	7/3227 (0.2%)

All (5) bond length outliers are listed below:

Mol	Chain	Res	Type	Atoms	Z	Observed(Å)	Ideal(Å)
1	A	55	GLU	C-O	7.18	1.32	1.24
1	A	83	GLN	C-O	5.27	1.30	1.24
1	A	118	TYR	C-O	5.26	1.29	1.23
1	A	104	VAL	C-O	5.24	1.29	1.24
1	A	159	PHE	C-O	5.12	1.30	1.24

All (7) bond angle outliers are listed below:

Mol	Chain	Res	Type	Atoms	Z	Observed(°)	Ideal(°)
1	A	140	PHE	CA-CB-CG	6.98	120.78	113.80
1	A	154	TYR	CB-CA-C	6.71	123.77	110.42
1	A	216	ASP	CA-CB-CG	6.43	119.03	112.60
1	A	216	ASP	CB-CA-C	6.08	121.53	111.31
1	A	92	ASP	CA-CB-CG	5.83	118.43	112.60
1	A	201	THR	CA-CB-OG1	-5.60	101.20	109.60
1	A	290	GLU	CB-CA-C	5.17	119.45	111.13

There are no chirality outliers.

There are no planarity outliers.

5.2 Too-close contacts [i](#)

In the following table, the Non-H and H(model) columns list the number of non-hydrogen atoms and hydrogen atoms in the chain respectively. The H(added) column lists the number of hydrogen

atoms added and optimized by MolProbity. The Clashes column lists the number of clashes within the asymmetric unit, whereas Symm-Clashes lists symmetry-related clashes.

Mol	Chain	Non-H	H(model)	H(added)	Clashes	Symm-Clashes
1	A	2326	0	2279	26	1
2	A	43	0	48	1	0
3	A	143	0	0	5	1
All	All	2512	0	2327	26	2

The all-atom clashscore is defined as the number of clashes found per 1000 atoms (including hydrogen atoms). The all-atom clashscore for this structure is 6.

All (26) close contacts within the same asymmetric unit are listed below, sorted by their clash magnitude.

Atom-1	Atom-2	Interatomic distance (Å)	Clash overlap (Å)
1:A:303:VAL:HA	3:A:515:HOH:O	1.57	1.04
1:A:168:PRO:O	1:A:169:THR:HG22	1.77	0.84
1:A:41:HIS:HB2	2:A:401:NOL:H652	1.76	0.66
1:A:52:PRO:HD2	1:A:188:ARG:HG2	1.80	0.63
1:A:53:ASN:OD1	1:A:56:ASP:CG	2.42	0.62
1:A:54:TYR:HB3	1:A:82:MET:HE1	1.86	0.58
1:A:25:THR:N	3:A:504:HOH:O	2.38	0.57
1:A:58:LEU:HD22	1:A:82:MET:HE3	1.88	0.55
1:A:86:VAL:HG23	1:A:179:GLY:HA2	1.88	0.55
1:A:165:MET:HE1	1:A:187:ASP:HA	1.89	0.54
1:A:168:PRO:O	1:A:169:THR:CG2	2.51	0.54
1:A:217:ARG:HD2	3:A:537:HOH:O	2.10	0.52
1:A:56:ASP:HB3	1:A:60:ARG:NH1	2.27	0.49
1:A:55:GLU:O	1:A:59:ILE:HG12	2.13	0.49
1:A:56:ASP:HB3	1:A:60:ARG:HH12	1.77	0.48
1:A:168:PRO:O	1:A:169:THR:CB	2.63	0.47
1:A:4:ARG:NH1	3:A:509:HOH:O	2.48	0.46
1:A:108:PRO:HG3	1:A:134:PHE:CE1	2.50	0.46
1:A:101:TYR:HA	1:A:157:VAL:O	2.15	0.45
1:A:114:VAL:O	1:A:125:VAL:HA	2.16	0.45
1:A:113:SER:O	1:A:149:GLY:HA2	2.20	0.42
1:A:58:LEU:HD22	1:A:82:MET:HB2	2.01	0.41
1:A:57:LEU:O	1:A:61:LYS:HG2	2.21	0.41
1:A:67:LEU:HD11	3:A:599:HOH:O	2.19	0.41
1:A:63:ASN:HB3	1:A:77:VAL:O	2.21	0.41
1:A:42:VAL:HG13	1:A:43:ILE:HG23	2.04	0.40

All (2) symmetry-related close contacts are listed below. The label for Atom-2 includes the sym-

metry operator and encoded unit-cell translations to be applied.

Atom-1	Atom-2	Interatomic distance (Å)	Clash overlap (Å)
3:A:603:HOH:O	3:A:607:HOH:O[7_555]	1.92	0.28
1:A:59:ILE:CD1	1:A:59:ILE:CD1[11_554]	2.09	0.11

5.3 Torsion angles [\(i\)](#)

5.3.1 Protein backbone [\(i\)](#)

In the following table, the Percentiles column shows the percent Ramachandran outliers of the chain as a percentile score with respect to all X-ray entries followed by that with respect to entries of similar resolution.

The Analysed column shows the number of residues for which the backbone conformation was analysed, and the total number of residues.

Mol	Chain	Analysed	Favoured	Allowed	Outliers	Percentiles
1	A	294/306 (96%)	281 (96%)	11 (4%)	2 (1%)	18 10

All (2) Ramachandran outliers are listed below:

Mol	Chain	Res	Type
1	A	154	TYR
1	A	184	PRO

5.3.2 Protein sidechains [\(i\)](#)

In the following table, the Percentiles column shows the percent sidechain outliers of the chain as a percentile score with respect to all X-ray entries followed by that with respect to entries of similar resolution.

The Analysed column shows the number of residues for which the sidechain conformation was analysed, and the total number of residues.

Mol	Chain	Analysed	Rotameric	Outliers	Percentiles
1	A	258/263 (98%)	251 (97%)	7 (3%)	39 36

All (7) residues with a non-rotameric sidechain are listed below:

Mol	Chain	Res	Type
1	A	55	GLU

Continued on next page...

Continued from previous page...

Mol	Chain	Res	Type
1	A	59	ILE
1	A	74	GLN
1	A	81	SER
1	A	169	THR
1	A	232	LEU
1	A	303	VAL

Sometimes sidechains can be flipped to improve hydrogen bonding and reduce clashes. All (3) such sidechains are listed below:

Mol	Chain	Res	Type
1	A	51	ASN
1	A	64	HIS
1	A	244	GLN

5.3.3 RNA [i](#)

There are no RNA molecules in this entry.

5.4 Non-standard residues in protein, DNA, RNA chains [i](#)

There are no non-standard protein/DNA/RNA residues in this entry.

5.5 Carbohydrates [i](#)

There are no oligosaccharides in this entry.

5.6 Ligand geometry [i](#)

1 ligand is modelled in this entry.

In the following table, the Counts columns list the number of bonds (or angles) for which Mogul statistics could be retrieved, the number of bonds (or angles) that are observed in the model and the number of bonds (or angles) that are defined in the Chemical Component Dictionary. The Link column lists molecule types, if any, to which the group is linked. The Z score for a bond length (or angle) is the number of standard deviations the observed value is removed from the expected value. A bond length (or angle) with $|Z| > 2$ is considered an outlier worth inspection. RMSZ is the root-mean-square of all Z scores of the bond lengths (or angles).

Mol	Type	Chain	Res	Link	Bond lengths			Bond angles		
					Counts	RMSZ	# Z > 2	Counts	RMSZ	# Z > 2
2	NOL	A	401	1	45,45,45	3.01	9 (20%)	57,61,61	1.59	11 (19%)

In the following table, the Chirals column lists the number of chiral outliers, the number of chiral centers analysed, the number of these observed in the model and the number defined in the Chemical Component Dictionary. Similar counts are reported in the Torsion and Rings columns. '-' means no outliers of that kind were identified.

Mol	Type	Chain	Res	Link	Chirals	Torsions	Rings
2	NOL	A	401	1	-	3/44/62/62	0/3/3/3

All (9) bond length outliers are listed below:

Mol	Chain	Res	Type	Atoms	Z	Observed(Å)	Ideal(Å)
2	A	401	NOL	C51-N49	16.69	1.51	1.33
2	A	401	NOL	C23-N25	5.11	1.45	1.34
2	A	401	NOL	C29-N31	4.69	1.44	1.34
2	A	401	NOL	C17-N19	3.96	1.44	1.34
2	A	401	NOL	O15-C17	3.30	1.41	1.35
2	A	401	NOL	O73-C23	-2.96	1.17	1.23
2	A	401	NOL	O56-C29	-2.53	1.18	1.23
2	A	401	NOL	C13-C2	2.08	1.55	1.50
2	A	401	NOL	O79-C81	-2.07	1.41	1.45

All (11) bond angle outliers are listed below:

Mol	Chain	Res	Type	Atoms	Z	Observed(°)	Ideal(°)
2	A	401	NOL	O89-C17-N19	-4.72	117.13	124.86
2	A	401	NOL	O15-C17-N19	3.98	118.97	110.45
2	A	401	NOL	O54-C51-C43	3.18	129.88	126.21
2	A	401	NOL	C81-O79-C75	3.05	123.59	118.64
2	A	401	NOL	C66-C60-C62	3.00	116.61	109.29
2	A	401	NOL	O39-C35-C33	-2.56	105.28	111.73
2	A	401	NOL	C64-C63-C62	2.25	116.05	111.42
2	A	401	NOL	C47-C45-C43	-2.24	102.38	105.69
2	A	401	NOL	C21-C23-N25	2.11	120.93	116.39
2	A	401	NOL	C45-C43-C51	2.06	105.70	102.87
2	A	401	NOL	C77-C75-C21	-2.03	109.28	113.26

There are no chirality outliers.

All (3) torsion outliers are listed below:

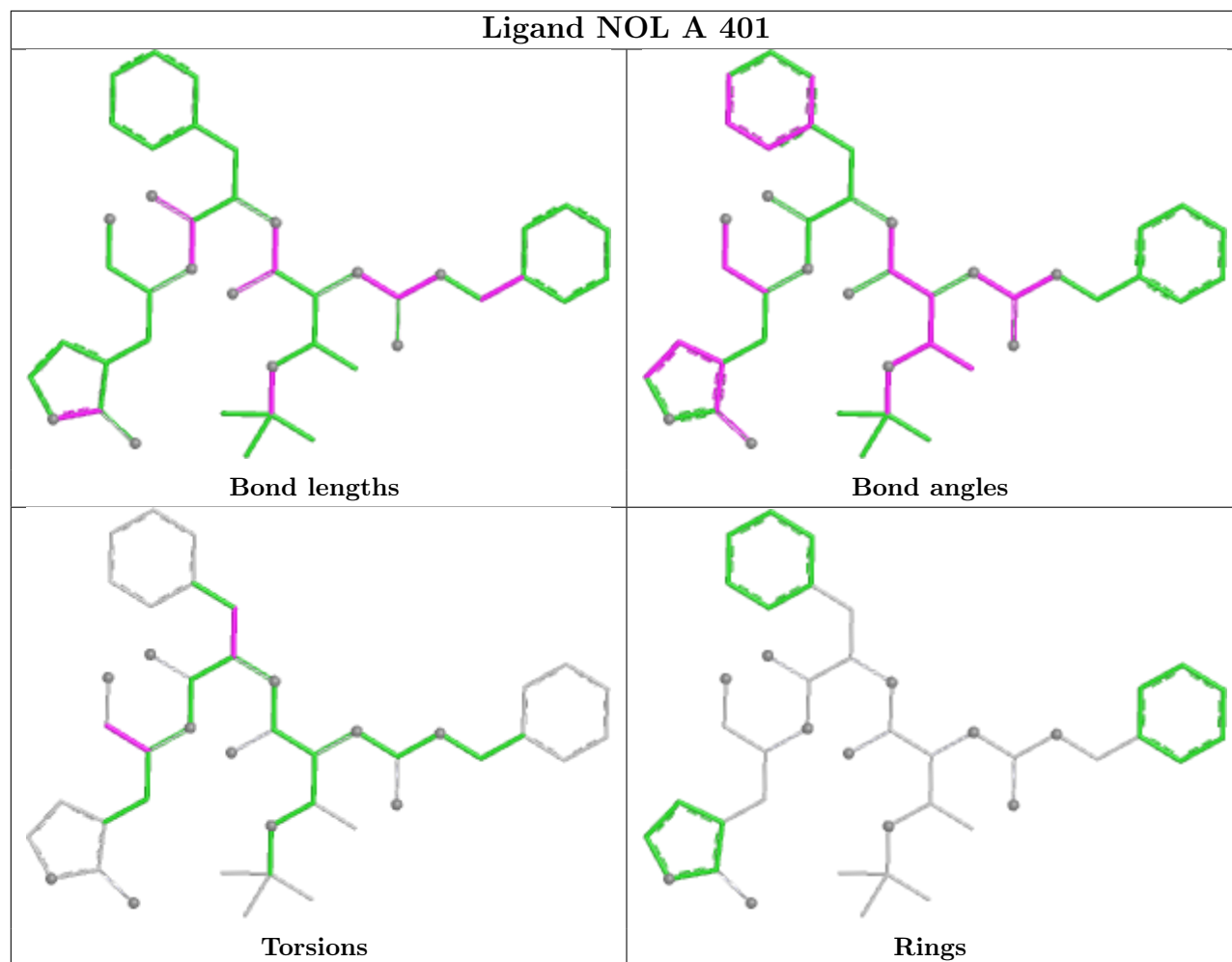
Mol	Chain	Res	Type	Atoms
2	A	401	NOL	N31-C33-C35-O39
2	A	401	NOL	C41-C33-C35-O39
2	A	401	NOL	N25-C27-C58-C60

There are no ring outliers.

1 monomer is involved in 1 short contact:

Mol	Chain	Res	Type	Clashes	Symm-Clashes
2	A	401	NOL	1	0

The following is a two-dimensional graphical depiction of Mogul quality analysis of bond lengths, bond angles, torsion angles, and ring geometry for all instances of the Ligand of Interest. In addition, ligands with molecular weight > 250 and outliers as shown on the validation Tables will also be included. For torsion angles, if less than 5% of the Mogul distribution of torsion angles is within 10 degrees of the torsion angle in question, then that torsion angle is considered an outlier. Any bond that is central to one or more torsion angles identified as an outlier by Mogul will be highlighted in the graph. For rings, the root-mean-square deviation (RMSD) between the ring in question and similar rings identified by Mogul is calculated over all ring torsion angles. If the average RMSD is greater than 60 degrees and the minimal RMSD between the ring in question and any Mogul-identified rings is also greater than 60 degrees, then that ring is considered an outlier. The outliers are highlighted in purple. The color gray indicates Mogul did not find sufficient equivalents in the CSD to analyse the geometry.



5.7 Other polymers [i](#)

There are no such residues in this entry.

5.8 Polymer linkage issues [i](#)

There are no chain breaks in this entry.

6 Fit of model and data [i](#)

6.1 Protein, DNA and RNA chains [i](#)

In the following table, the column labelled ‘#RSRZ> 2’ contains the number (and percentage) of RSRZ outliers, followed by percent RSRZ outliers for the chain as percentile scores relative to all X-ray entries and entries of similar resolution. The OWAB column contains the minimum, median, 95th percentile and maximum values of the occupancy-weighted average B-factor per residue. The column labelled ‘Q< 0.9’ lists the number of (and percentage) of residues with an average occupancy less than 0.9.

Mol	Chain	Analysed	<RSRZ>	#RSRZ>2	OWAB(Å ²)	Q<0.9
1	A	300/306 (98%)	0.32	19 (6%) 26 26	12, 28, 63, 76	0

All (19) RSRZ outliers are listed below:

Mol	Chain	Res	Type	RSRZ
1	A	63	ASN	3.7
1	A	78	ILE	3.7
1	A	59	ILE	3.7
1	A	283	GLY	3.4
1	A	67	LEU	3.4
1	A	154	TYR	3.0
1	A	305	PHE	2.6
1	A	276	MET	2.5
1	A	91	VAL	2.5
1	A	72	ASN	2.5
1	A	57	LEU	2.5
1	A	44	CYS	2.4
1	A	90	LYS	2.3
1	A	25	THR	2.2
1	A	89	LEU	2.2
1	A	62	SER	2.2
1	A	55	GLU	2.1
1	A	49	MET	2.1
1	A	306	GLN	2.1

6.2 Non-standard residues in protein, DNA, RNA chains [i](#)

There are no non-standard protein/DNA/RNA residues in this entry.

6.3 Carbohydrates [i](#)

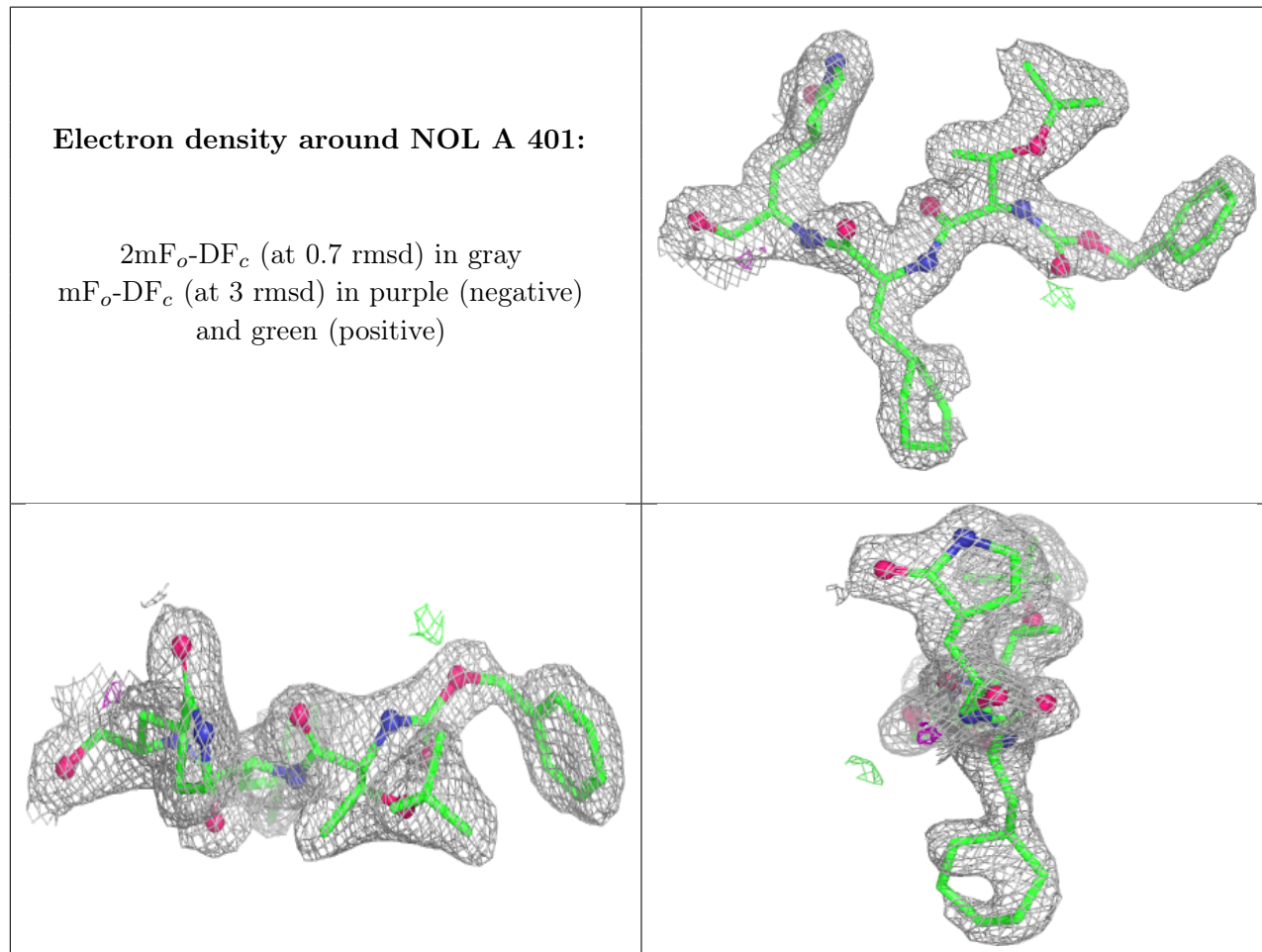
There are no oligosaccharides in this entry.

6.4 Ligands [i](#)

In the following table, the Atoms column lists the number of modelled atoms in the group and the number defined in the chemical component dictionary. The B-factors column lists the minimum, median, 95th percentile and maximum values of B factors of atoms in the group. The column labelled 'Q< 0.9' lists the number of atoms with occupancy less than 0.9.

Mol	Type	Chain	Res	Atoms	RSCC	RSR	B-factors(Å ²)	Q<0.9
2	NOL	A	401	43/43	0.90	0.10	16,31,43,48	0

The following is a graphical depiction of the model fit to experimental electron density of all instances of the Ligand of Interest. In addition, ligands with molecular weight > 250 and outliers as shown on the geometry validation Tables will also be included. Each fit is shown from different orientation to approximate a three-dimensional view.



6.5 Other polymers [i](#)

There are no such residues in this entry.