



Full wwPDB EM Validation Report ⓘ

Oct 21, 2024 – 01:33 PM JST

PDB ID : 7F93
EMDB ID : EMD-31496
Title : Structure of connexin43/Cx43/GJA1 gap junction intercellular channel in nanodiscs with soybean lipids at pH 8.0
Authors : Lee, H.J.; Cha, H.J.; Jeong, H.; Lee, S.N.; Lee, C.W.; Woo, J.S.
Deposited on : 2021-07-03
Resolution : 3.60 Å(reported)

This is a Full wwPDB EM Validation Report for a publicly released PDB entry.

We welcome your comments at validation@mail.wwpdb.org

A user guide is available at

<https://www.wwpdb.org/validation/2017/EMValidationReportHelp>

with specific help available everywhere you see the ⓘ symbol.

The types of validation reports are described at

<http://www.wwpdb.org/validation/2017/FAQs#types>.

The following versions of software and data (see [references ⓘ](#)) were used in the production of this report:

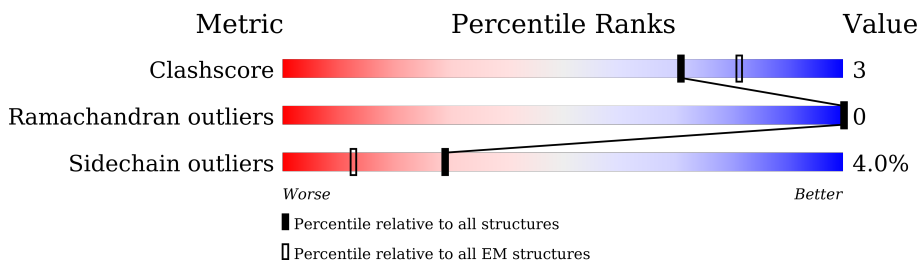
EMDB validation analysis : 0.0.1.dev113
Mogul : 1.8.5 (274361), CSD as541be (2020)
MolProbity : 4.02b-467
Percentile statistics : 20231227.v01 (using entries in the PDB archive December 27th 2023)
MapQ : 1.9.13
Ideal geometry (proteins) : Engh & Huber (2001)
Ideal geometry (DNA, RNA) : Parkinson et al. (1996)
Validation Pipeline (wwPDB-VP) : 2.39

1 Overall quality at a glance i

The following experimental techniques were used to determine the structure:
ELECTRON MICROSCOPY

The reported resolution of this entry is 3.60 Å.

Percentile scores (ranging between 0-100) for global validation metrics of the entry are shown in the following graphic. The table shows the number of entries on which the scores are based.



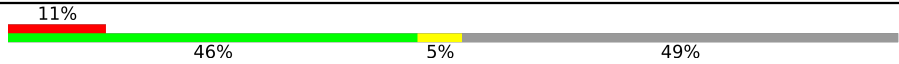
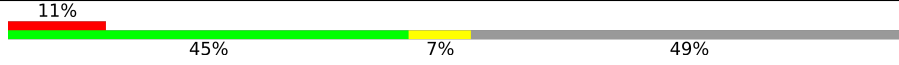
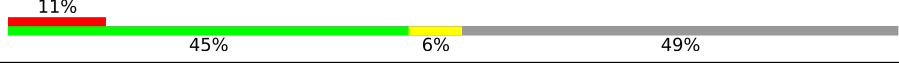
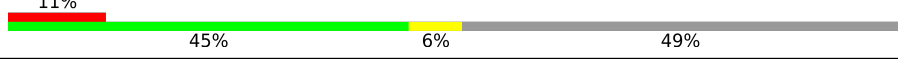
Metric	Whole archive (#Entries)	EM structures (#Entries)
Clashscore	210492	15764
Ramachandran outliers	207382	16835
Sidechain outliers	206894	16415

The table below summarises the geometric issues observed across the polymeric chains and their fit to the map. The red, orange, yellow and green segments of the bar indicate the fraction of residues that contain outliers for ≥ 3 , 2, 1 and 0 types of geometric quality criteria respectively. A grey segment represents the fraction of residues that are not modelled. The numeric value for each fraction is indicated below the corresponding segment, with a dot representing fractions $\leq 5\%$. The upper red bar (where present) indicates the fraction of residues that have poor fit to the EM map (all-atom inclusion $< 40\%$). The numeric value is given above the bar.

Mol	Chain	Length	Quality of chain
1	A	382	
1	B	382	
1	C	382	
1	D	382	
1	E	382	
1	F	382	
1	G	382	
1	H	382	

Continued on next page...

Continued from previous page...

Mol	Chain	Length	Quality of chain
1	I	382	 <p>11% 46% 5% 49%</p>
1	J	382	 <p>11% 45% 7% 49%</p>
1	K	382	 <p>11% 45% 6% 49%</p>
1	L	382	 <p>11% 45% 6% 49%</p>

2 Entry composition [i](#)

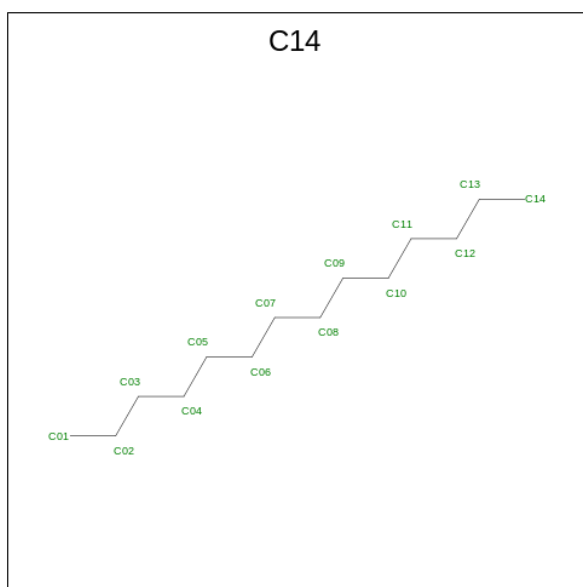
There are 2 unique types of molecules in this entry. The entry contains 20808 atoms, of which 0 are hydrogens and 0 are deuteriums.

In the tables below, the AltConf column contains the number of residues with at least one atom in alternate conformation and the Trace column contains the number of residues modelled with at most 2 atoms.

- Molecule 1 is a protein called Gap junction alpha-1 protein.

Mol	Chain	Residues	Atoms					AltConf	Trace
			Total	C	N	O	S		
1	A	196	1594	1065	254	267	8	0	0
1	B	196	1594	1065	254	267	8	0	0
1	C	196	1594	1065	254	267	8	0	0
1	D	196	1594	1065	254	267	8	0	0
1	E	196	1594	1065	254	267	8	0	0
1	F	196	1594	1065	254	267	8	0	0
1	G	196	1594	1065	254	267	8	0	0
1	H	196	1594	1065	254	267	8	0	0
1	I	196	1594	1065	254	267	8	0	0
1	J	196	1594	1065	254	267	8	0	0
1	K	196	1594	1065	254	267	8	0	0
1	L	196	1594	1065	254	267	8	0	0

- Molecule 2 is TETRADECANE (three-letter code: C14) (formula: C₁₄H₃₀).



Mol	Chain	Residues	Atoms	AltConf
2	A	1	Total C 14 14	0
2	A	1	Total C 14 14	0
2	A	1	Total C 14 14	0
2	A	1	Total C 14 14	0
2	A	1	Total C 14 14	0
2	A	1	Total C 14 14	0
2	A	1	Total C 14 14	0
2	A	1	Total C 14 14	0
2	A	1	Total C 14 14	0
2	A	1	Total C 14 14	0
2	B	1	Total C 14 14	0
2	B	1	Total C 14 14	0
2	B	1	Total C 14 14	0
2	B	1	Total C 14 14	0

Continued on next page...

Continued from previous page...

Mol	Chain	Residues	Atoms	AltConf
2	B	1	Total C 14 14	0
2	B	1	Total C 14 14	0
2	B	1	Total C 14 14	0
2	B	1	Total C 14 14	0
2	B	1	Total C 14 14	0
2	B	1	Total C 14 14	0
2	C	1	Total C 14 14	0
2	C	1	Total C 14 14	0
2	C	1	Total C 14 14	0
2	C	1	Total C 14 14	0
2	C	1	Total C 14 14	0
2	C	1	Total C 14 14	0
2	C	1	Total C 14 14	0
2	C	1	Total C 14 14	0
2	C	1	Total C 14 14	0
2	C	1	Total C 14 14	0
2	D	1	Total C 14 14	0
2	D	1	Total C 14 14	0
2	D	1	Total C 14 14	0
2	D	1	Total C 14 14	0
2	D	1	Total C 14 14	0

Continued on next page...

Continued from previous page...

Mol	Chain	Residues	Atoms	AltConf
2	D	1	Total C 14 14	0
2	D	1	Total C 14 14	0
2	D	1	Total C 14 14	0
2	D	1	Total C 14 14	0
2	D	1	Total C 14 14	0
2	D	1	Total C 14 14	0
2	E	1	Total C 14 14	0
2	E	1	Total C 14 14	0
2	E	1	Total C 14 14	0
2	E	1	Total C 14 14	0
2	E	1	Total C 14 14	0
2	E	1	Total C 14 14	0
2	E	1	Total C 14 14	0
2	E	1	Total C 14 14	0
2	E	1	Total C 14 14	0
2	E	1	Total C 14 14	0
2	F	1	Total C 14 14	0
2	F	1	Total C 14 14	0
2	F	1	Total C 14 14	0
2	F	1	Total C 14 14	0
2	F	1	Total C 14 14	0
2	F	1	Total C 14 14	0

Continued on next page...

Continued from previous page...

Mol	Chain	Residues	Atoms	AltConf
2	F	1	Total C 14 14	0
2	F	1	Total C 14 14	0
2	F	1	Total C 14 14	0
2	F	1	Total C 14 14	0
2	G	1	Total C 14 14	0
2	G	1	Total C 14 14	0
2	G	1	Total C 14 14	0
2	G	1	Total C 14 14	0
2	G	1	Total C 14 14	0
2	G	1	Total C 14 14	0
2	G	1	Total C 14 14	0
2	G	1	Total C 14 14	0
2	G	1	Total C 14 14	0
2	G	1	Total C 14 14	0
2	H	1	Total C 14 14	0
2	H	1	Total C 14 14	0
2	H	1	Total C 14 14	0
2	H	1	Total C 14 14	0
2	H	1	Total C 14 14	0
2	H	1	Total C 14 14	0
2	H	1	Total C 14 14	0

Continued on next page...

Continued from previous page...

Mol	Chain	Residues	Atoms	AltConf
2	H	1	Total C 14 14	0
2	H	1	Total C 14 14	0
2	H	1	Total C 14 14	0
2	I	1	Total C 14 14	0
2	I	1	Total C 14 14	0
2	I	1	Total C 14 14	0
2	I	1	Total C 14 14	0
2	I	1	Total C 14 14	0
2	I	1	Total C 14 14	0
2	I	1	Total C 14 14	0
2	I	1	Total C 14 14	0
2	I	1	Total C 14 14	0
2	I	1	Total C 14 14	0
2	I	1	Total C 14 14	0
2	J	1	Total C 14 14	0
2	J	1	Total C 14 14	0
2	J	1	Total C 14 14	0
2	J	1	Total C 14 14	0
2	J	1	Total C 14 14	0
2	J	1	Total C 14 14	0
2	J	1	Total C 14 14	0
2	J	1	Total C 14 14	0

Continued on next page...

Continued from previous page...

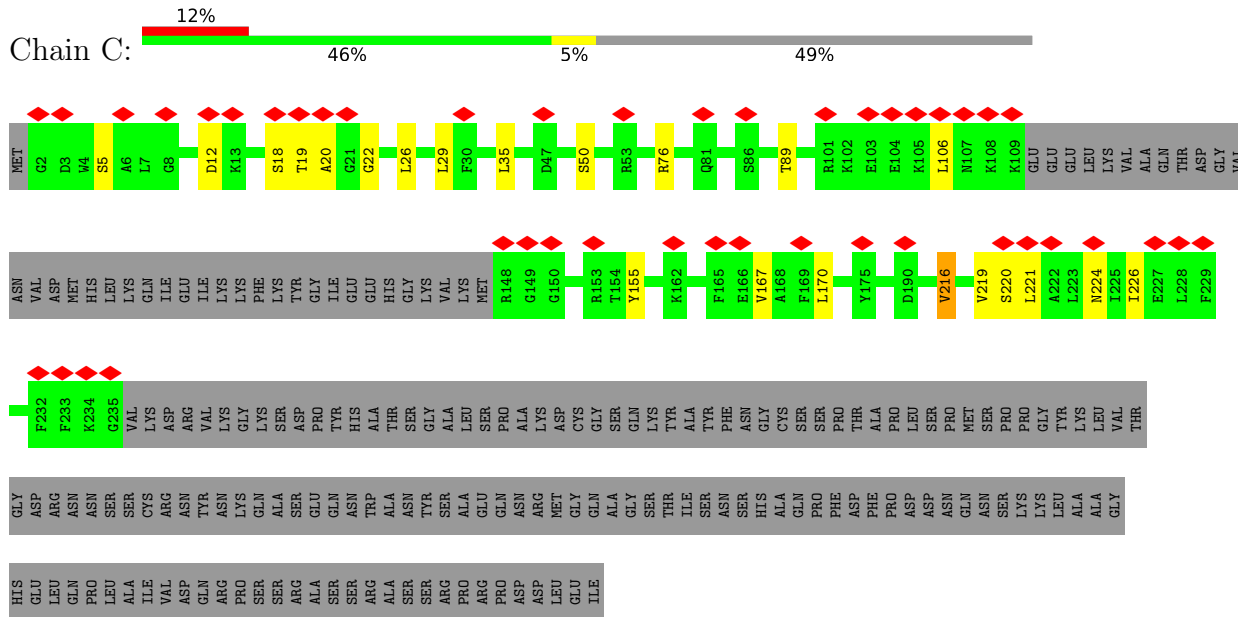
Mol	Chain	Residues	Atoms	AltConf
2	J	1	Total C 14 14	0
2	J	1	Total C 14 14	0
2	J	1	Total C 14 14	0
2	K	1	Total C 14 14	0
2	K	1	Total C 14 14	0
2	K	1	Total C 14 14	0
2	K	1	Total C 14 14	0
2	K	1	Total C 14 14	0
2	K	1	Total C 14 14	0
2	K	1	Total C 14 14	0
2	K	1	Total C 14 14	0
2	K	1	Total C 14 14	0
2	K	1	Total C 14 14	0
2	L	1	Total C 14 14	0
2	L	1	Total C 14 14	0
2	L	1	Total C 14 14	0
2	L	1	Total C 14 14	0
2	L	1	Total C 14 14	0
2	L	1	Total C 14 14	0
2	L	1	Total C 14 14	0
2	L	1	Total C 14 14	0
2	L	1	Total C 14 14	0

Continued on next page...

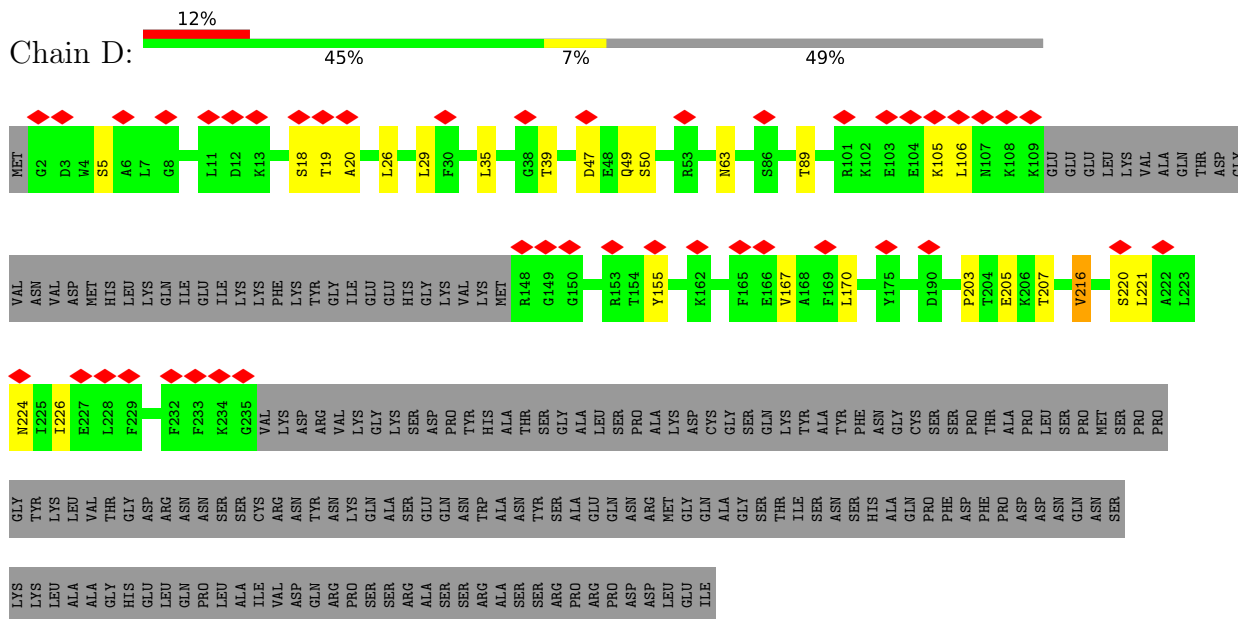
Continued from previous page...

Mol	Chain	Residues	Atoms		AltConf
2	L	1	Total	C	0
			14	14	

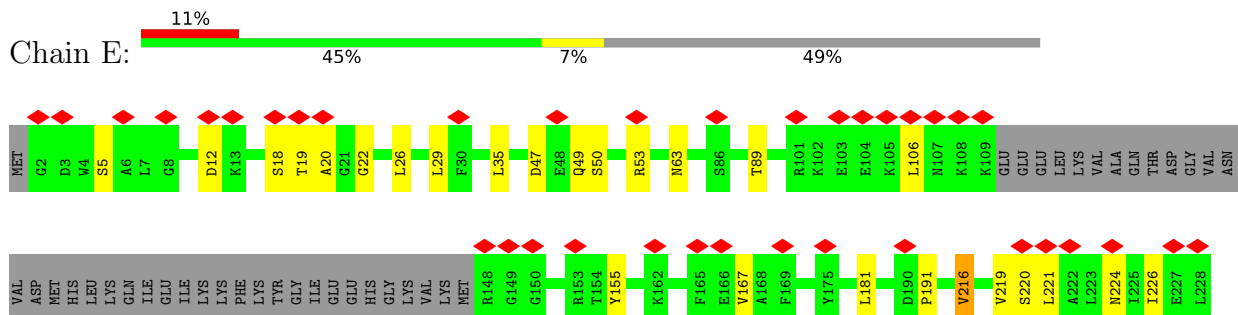
• Molecule 1: Gap junction alpha-1 protein

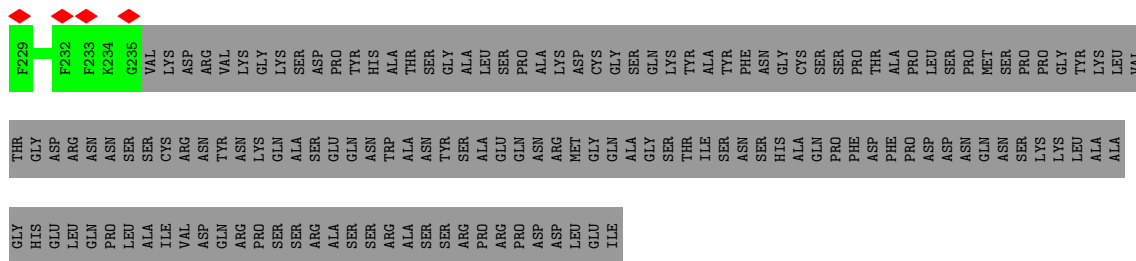


• Molecule 1: Gap junction alpha-1 protein

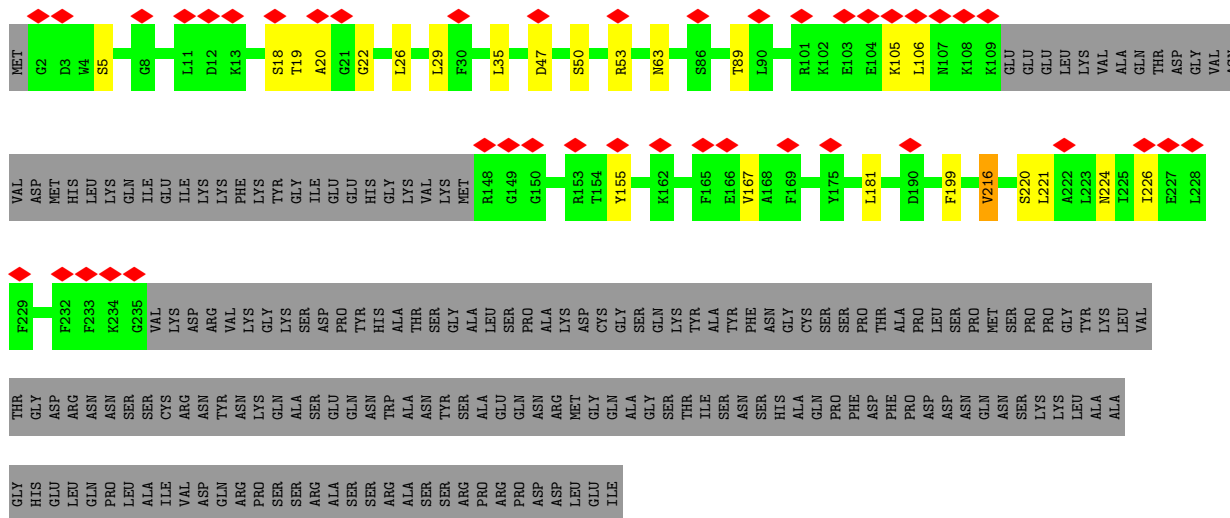


• Molecule 1: Gap junction alpha-1 protein

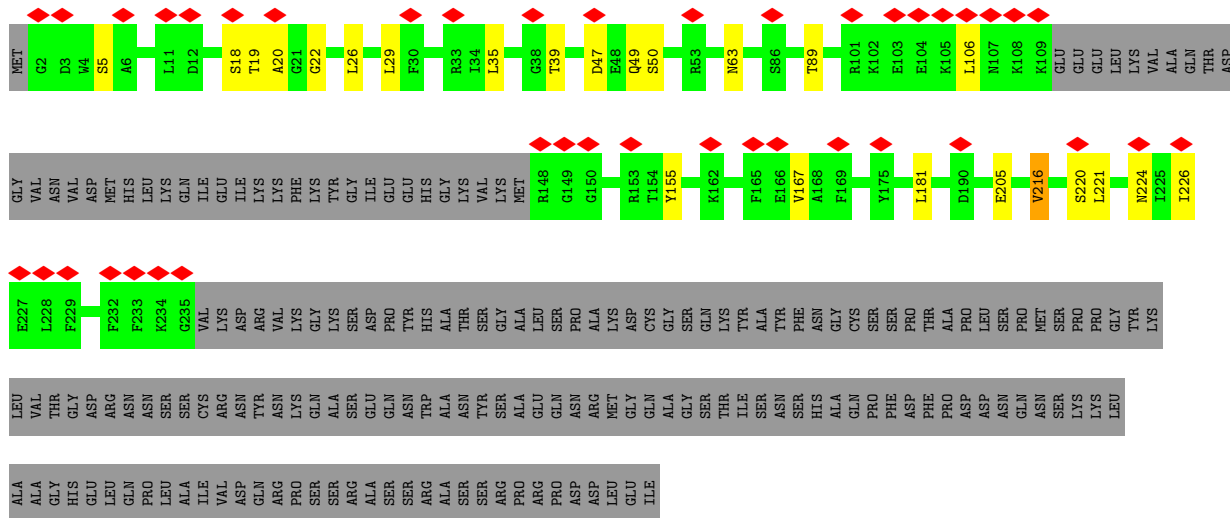




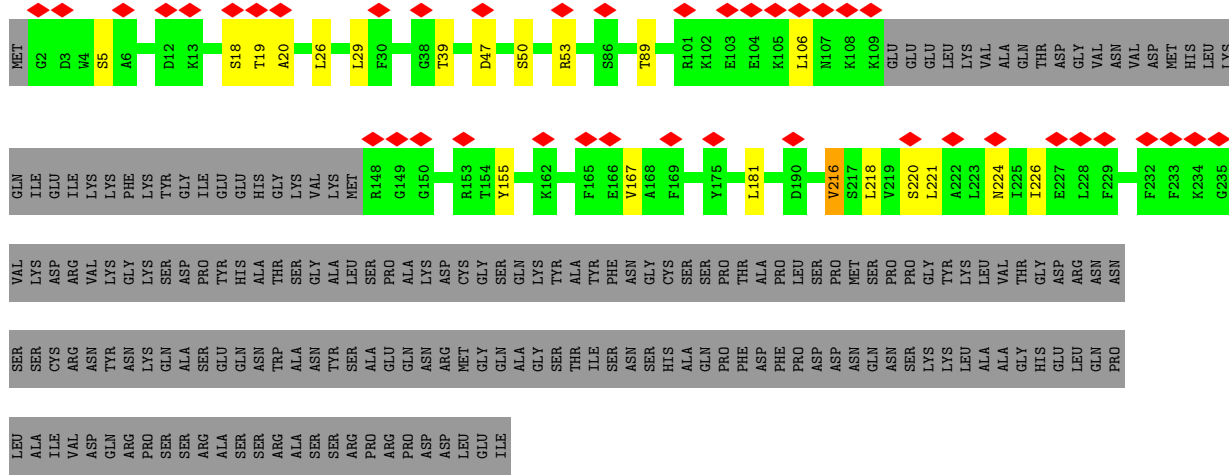
• Molecule 1: Gap junction alpha-1 protein



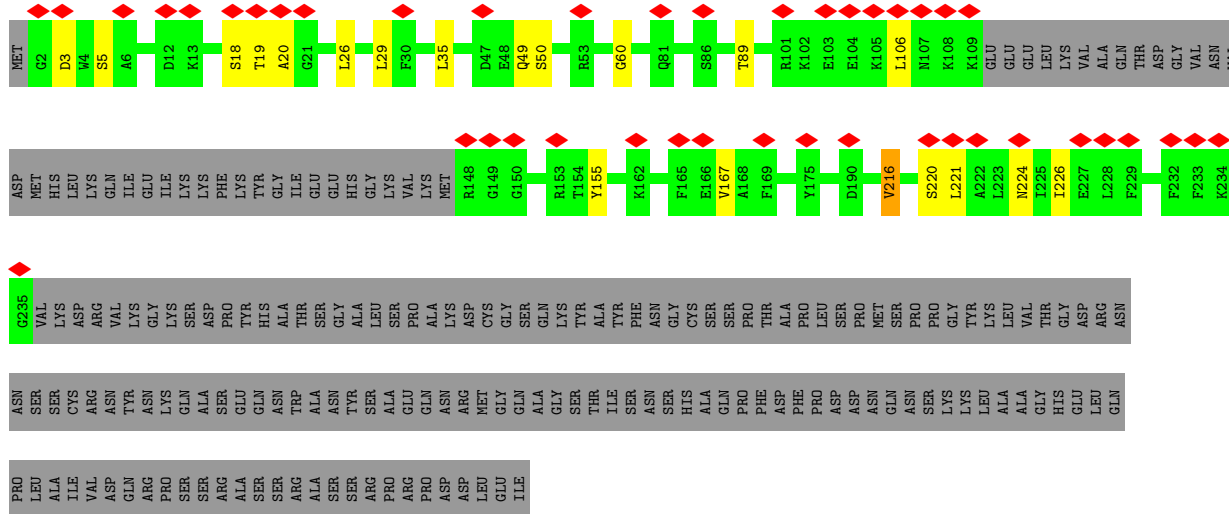
• Molecule 1: Gap junction alpha-1 protein



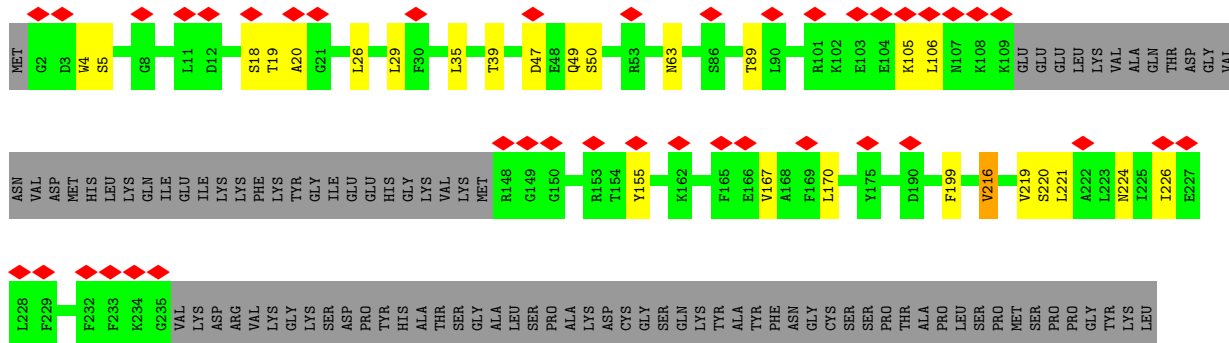
• Molecule 1: Gap junction alpha-1 protein



• Molecule 1: Gap junction alpha-1 protein



• Molecule 1: Gap junction alpha-1 protein



VAL	THR	GLY	ASP	ARG	ASN	ASN	SER	SER	VAL	CYS	ARG	ASN	ASN	ASN	LYS	GLN	ALA	ALA	GLU	GLN	ASN	TRP	ALA	ALA	ALA	SER	TYR	SER	SER	ALA	GLU	GLY	GLY	ALA	ALA	SER	THR	ILE	SER	ASN	SER	SER	HIS	ALA	ALA	PRO	PHE	PHE	ASP	PRO	ASP	ASP	ASP	ASN	GLN	ASN	GLN	LYS	LYS	LYS	LYS	ALA
ALA	GLY	HIS	D3	#4	S5	A6	L7	G8	I11	D12	K13	S18	T19	A20	L26	L29	F30	L35	D47	E48	Q49	S50	R53	N63	E48	Q49	S50	R53	N63	S86	T89	R101	K102	E103	E104	K105	L106	N107	K108	K109	GLU	GLU	GLU	LEU	LEU	LYS	VAL	VAL	ALA	ALA	GLN	THR	ASP	GLY	VAL	ASN	VAL					

● Molecule 1: Gap junction alpha-1 protein



MET	G2	D3	#4	S5	A6	L7	G8	I11	D12	K13	S18	T19	A20	L26	L29	F30	L35	D47	E48	Q49	S50	R53	N63	E48	Q49	S50	R53	N63	S86	T89	R101	K102	E103	E104	K105	L106	N107	K108	K109	GLU	GLU	GLU	LEU	LEU	LYS	VAL	VAL	ALA	ALA	GLN	THR	ASP	GLY	VAL	ASN	VAL																																				
ASP	MET	HIS	LEU	LYS	ILE	ILE	ILE	LYS	LYS	PHE	LYS	TYR	GLY	ILE	GLU	HIS	GLY	LYS	VAL	VAL	LYS	MET	R148	G149	G150	R153	T154	Y155	K162	F165	E166	V167	F169	Y175	D190	P203	T207	V216	S220	L221	A222	L223	N224	I225	I226	E227	L228	F229	ASP	MET	HIS	LEU	LYS	ILE	ILE	LYS	LYS	PHE	LYS	TYR	GLY	ILE	GLU	HIS	GLY	VAL	VAL	ASN	VAL	ASP	MET	HIS	LEU	LYS	ILE	ILE	LYS	LYS	PHE	LYS	TYR	GLY	ILE	GLU	HIS	GLY	VAL	VAL	ASN	VAL	ASP	MET
F232	F233	K234	G235	VAL	LYS	ASP	ARG	VAL	VAL	LYS	GLY	LYS	ASP	PRO	TYR	HIS	ALA	THR	SER	GLY	VAL	LEU	SER	PRO	ALA	ALA	LYS	ASP	ASP	CYS	GLY	SER	GLN	LYS	TYR	ALA	CYS	SER	SER	PRO	THR	PRO	ALA	ALA	ASP	ASP	ASN	PRO	MET	SER	PRO	PRO	GLY	TYR	LYS	LYS	ALA	ALA	THR	THR	ASP	VAL	VAL	THR																												
GLY	ASP	ARG	ASN	SER	ASN	SER	CYS	ARG	VAL	ASN	ASN	TYR	VAL	LYS	ASP	ARG	VAL	VAL	LYS	GLY	LYS	ASP	PRO	TYR	HIS	ALA	THR	SER	GLY	VAL	LEU	SER	PRO	ALA	ALA	LYS	ASP	ASP	CYS	GLY	SER	GLN	LYS	TYR	ALA	CYS	SER	SER	PRO	THR	PRO	ALA	ALA	ASP	ASP	ASN	PRO	MET	SER	PRO	PRO	GLY	TYR	LYS	LYS	ALA	ALA	THR	THR	ASP	VAL	VAL	THR																			
HIS	GLU	LEU	GLN	PRO	ALA	ALA	ILE	VAL	VAL	ASN	ASN	TYR	VAL	LYS	ASP	ARG	VAL	VAL	LYS	GLY	LYS	ASP	PRO	TYR	HIS	ALA	THR	SER	GLY	VAL	LEU	SER	PRO	ALA	ALA	LYS	ASP	ASP	CYS	GLY	SER	GLN	LYS	TYR	ALA	CYS	SER	SER	PRO	THR	PRO	ALA	ALA	ASP	ASP	ASN	PRO	MET	SER	PRO	PRO	GLY	TYR	LYS	LYS	ALA	ALA	THR	THR	ASP	VAL	VAL	THR																			

● Molecule 1: Gap junction alpha-1 protein



MET	G2	D3	#4	S5	A6	L7	G8	I11	D12	K13	S18	T19	A20	L26	L29	F30	L35	D47	E48	Q49	S50	R53	R76	S86	T89	R101	K102	E103	E104	K105	L106	M107	K108	K109	GLU	GLU	GLU	LEU	LEU	LYS	VAL	VAL	ALA	ALA	GLN	THR	THR	ASP	GLY	VAL	ASN	VAL	ASP	MET																																							
HIS	LEU	LYS	ILE	ILE	ILE	LYS	LYS	LYS	PHE	LYS	TYR	ILE	ILE	GLU	HIS	GLY	VAL	LYS	VAL	VAL	LYS	MET	R148	G149	G150	R153	T154	Y155	K162	F165	E166	V167	A168	F169	Y175	L181	D190	V216	V219	S220	L221	A222	L223	N224	I225	I226	E227	L228	F229	F232	F233	HIS	LEU	LYS	ILE	ILE	LYS	LYS	PHE	LYS	TYR	GLY	ILE	GLU	HIS	GLY	VAL	VAL	ASN	VAL	ASP	MET	HIS	LEU	LYS	ILE	ILE	LYS	LYS	PHE	LYS	TYR	GLY	ILE	GLU	HIS	GLY	VAL	VAL	ASN	VAL	ASP	MET
K234	G235	VAL	LYS	ASP	ARG	VAL	VAL	LYS	ASP	ARG	VAL	VAL	LYS	ASP	PRO	TYR	HIS	ALA	THR	SER	GLY	VAL	LEU	SER	PRO	ALA	ALA	LYS	ASP	ASP	CYS	GLY	ALA	ALA	LYS	TYR	ALA	TYR	ILE	TYR	PHE	ASN	ASN	GLY	HIS	ALA	ALA	SER	PRO	PRO	THR	ALA	ASP	PRO	PRO	ASP	ASP	ASN	PRO	MET	SER	PRO	PRO	GLY	TYR	LYS	LYS	ALA	ALA	THR	THR	ASP	GLY	GLU	LEU	ARG																	
ASN	ASN	SER	CYS	ARG	ASN	TYR	ASN	ASN	LYS	GLY	LYS	ASP	ALA	GLU	GLN	TRP	ALA	ALA	ASN	ASN	TYR	SER	TYR	SER	ARG	ARG	GLU	GLN	ASN	ARG	MET	GLY	GLN	ALA	ALA	GLY	SER	THR	ILE	ILE	SER	ASN	ASN	GLY	HIS	ALA	ALA	SER	PRO	PRO	THR	ALA	ASP	PRO	PRO	ASP	ASP	ASN	GLN	ASN	SER	PRO	PRO	GLY	TYR	LYS	LYS	ALA	ALA	THR	THR	ASP	GLY	GLU	LEU	ARG																	
GLN	PRO	LEU	ALA	ILE	VAL	ASP	GLN	PRO	PRO	SER	SER	ALA	ALA	ALA	ASN	SER	SER	ARG	ARG	PRO	PRO	ASP	ASP	LEU	ILE	ILE	TYR	THR	THR	ILE	SER	ASN	ASN	GLY	THR	ALA	PRO	PHE	PHE	PRO	PRO	ASP	ASP	ASN	GLN	ASN	SER	SER	PRO	PRO	GLY	TYR	LYS	LYS	ALA	ALA	THR	THR	ASP	GLY	GLU	LEU	ARG																														

4 Experimental information

Property	Value	Source
EM reconstruction method	SINGLE PARTICLE	Depositor
Imposed symmetry	POINT, Not provided	
Number of particles used	28341	Depositor
Resolution determination method	FSC 0.143 CUT-OFF	Depositor
CTF correction method	PHASE FLIPPING AND AMPLITUDE CORRECTION	Depositor
Microscope	FEI TITAN KRIOS	Depositor
Voltage (kV)	300	Depositor
Electron dose ($e^-/\text{\AA}^2$)	40.0	Depositor
Minimum defocus (nm)	Not provided	
Maximum defocus (nm)	Not provided	
Magnification	Not provided	
Image detector	FEI FALCON III (4k x 4k)	Depositor
Maximum map value	0.961	Depositor
Minimum map value	-0.584	Depositor
Average map value	0.001	Depositor
Map value standard deviation	0.047	Depositor
Recommended contour level	0.28	Depositor
Map size (Å)	268.032, 268.032, 268.032	wwPDB
Map dimensions	512, 512, 512	wwPDB
Map angles (°)	90.0, 90.0, 90.0	wwPDB
Pixel spacing (Å)	0.5235, 0.5235, 0.5235	Depositor

5 Model quality [i](#)

5.1 Standard geometry [i](#)

Bond lengths and bond angles in the following residue types are not validated in this section: C14

The Z score for a bond length (or angle) is the number of standard deviations the observed value is removed from the expected value. A bond length (or angle) with $|Z| > 5$ is considered an outlier worth inspection. RMSZ is the root-mean-square of all Z scores of the bond lengths (or angles).

Mol	Chain	Bond lengths		Bond angles	
		RMSZ	# Z >5	RMSZ	# Z >5
1	A	0.40	0/1637	0.51	0/2218
1	B	0.40	0/1637	0.51	0/2218
1	C	0.40	0/1637	0.51	0/2218
1	D	0.40	0/1637	0.51	0/2218
1	E	0.40	0/1637	0.51	0/2218
1	F	0.40	0/1637	0.51	0/2218
1	G	0.40	0/1637	0.52	0/2218
1	H	0.40	0/1637	0.51	0/2218
1	I	0.40	0/1637	0.51	0/2218
1	J	0.40	0/1637	0.51	0/2218
1	K	0.40	0/1637	0.51	0/2218
1	L	0.40	0/1637	0.51	0/2218
All	All	0.40	0/19644	0.51	0/26616

There are no bond length outliers.

There are no bond angle outliers.

There are no chirality outliers.

There are no planarity outliers.

5.2 Too-close contacts [i](#)

In the following table, the Non-H and H(model) columns list the number of non-hydrogen atoms and hydrogen atoms in the chain respectively. The H(added) column lists the number of hydrogen atoms added and optimized by MolProbity. The Clashes column lists the number of clashes within the asymmetric unit, whereas Symm-Clashes lists symmetry-related clashes.

Mol	Chain	Non-H	H(model)	H(added)	Clashes	Symm-Clashes
1	A	1594	0	1626	12	0

Continued on next page...

Continued from previous page...

Mol	Chain	Non-H	H(model)	H(added)	Clashes	Symm-Clashes
1	B	1594	0	1626	10	0
1	C	1594	0	1626	11	0
1	D	1594	0	1626	14	0
1	E	1594	0	1626	15	0
1	F	1594	0	1626	14	0
1	G	1594	0	1626	14	0
1	H	1594	0	1626	10	0
1	I	1594	0	1626	9	0
1	J	1594	0	1626	15	0
1	K	1594	0	1626	14	0
1	L	1594	0	1626	13	0
2	A	140	0	300	2	0
2	B	140	0	300	2	0
2	C	140	0	300	4	0
2	D	154	0	330	3	0
2	E	126	0	270	1	0
2	F	140	0	300	3	0
2	G	140	0	300	4	0
2	H	140	0	300	2	0
2	I	140	0	300	3	0
2	J	154	0	330	2	0
2	K	126	0	270	2	0
2	L	140	0	300	3	0
All	All	20808	0	23112	145	0

The all-atom clashscore is defined as the number of clashes found per 1000 atoms (including hydrogen atoms). The all-atom clashscore for this structure is 3.

All (145) close contacts within the same asymmetric unit are listed below, sorted by their clash magnitude.

Atom-1	Atom-2	Interatomic distance (Å)	Clash overlap (Å)
1:D:63:ASN:OD1	1:E:53:ARG:NH2	2.30	0.64
1:J:105:LYS:NZ	1:K:12:ASP:OD2	2.32	0.63
1:I:49:GLN:NE2	1:J:47:ASP:OD2	2.32	0.63
1:F:18:SER:HG	1:F:155:TYR:HH	1.47	0.62
2:I:408:C14:H091	1:J:39:THR:HG21	1.81	0.61
1:C:18:SER:HG	1:C:155:TYR:HH	1.48	0.60
1:H:18:SER:HG	1:H:155:TYR:HH	1.48	0.60
1:A:18:SER:HG	1:A:155:TYR:HH	1.49	0.60
1:B:220:SER:O	1:B:224:ASN:ND2	2.36	0.59
1:I:220:SER:O	1:I:224:ASN:ND2	2.36	0.59

Continued on next page...

Continued from previous page...

Atom-1	Atom-2	Interatomic distance (Å)	Clash overlap (Å)
1:G:220:SER:O	1:G:224:ASN:ND2	2.36	0.59
1:F:220:SER:O	1:F:224:ASN:ND2	2.36	0.59
1:H:220:SER:O	1:H:224:ASN:ND2	2.36	0.59
1:E:220:SER:O	1:E:224:ASN:ND2	2.36	0.59
1:A:220:SER:O	1:A:224:ASN:ND2	2.36	0.58
1:L:220:SER:O	1:L:224:ASN:ND2	2.36	0.58
1:D:220:SER:O	1:D:224:ASN:ND2	2.36	0.58
1:K:220:SER:O	1:K:224:ASN:ND2	2.36	0.58
1:J:220:SER:O	1:J:224:ASN:ND2	2.36	0.58
1:E:49:GLN:NE2	1:F:47:ASP:OD2	2.36	0.58
1:J:63:ASN:OD1	1:K:53:ARG:NH2	2.37	0.58
1:C:220:SER:O	1:C:224:ASN:ND2	2.36	0.58
1:G:205:GLU:OE2	1:L:76:ARG:NH1	2.35	0.57
1:J:18:SER:HG	1:J:155:TYR:HH	1.50	0.57
1:D:49:GLN:NE2	1:E:47:ASP:OD2	2.39	0.56
1:I:18:SER:HG	1:I:155:TYR:HH	1.53	0.55
1:E:18:SER:HG	1:E:155:TYR:HH	1.53	0.55
2:G:405:C14:H091	1:H:39:THR:HG21	1.89	0.55
2:C:408:C14:H091	1:D:39:THR:HG21	1.88	0.54
1:L:18:SER:HG	1:L:155:TYR:HH	1.53	0.54
1:G:18:SER:HG	1:G:155:TYR:HH	1.54	0.53
1:K:63:ASN:OD1	1:L:53:ARG:NH2	2.42	0.53
1:B:18:SER:HG	1:B:155:TYR:HH	1.52	0.52
1:A:12:ASP:OD2	1:F:105:LYS:NZ	2.43	0.52
1:G:49:GLN:NE2	1:H:47:ASP:OD2	2.43	0.52
1:K:49:GLN:NE2	1:L:47:ASP:OD2	2.43	0.52
1:D:18:SER:HG	1:D:155:TYR:HH	1.53	0.51
1:A:49:GLN:NE2	1:B:47:ASP:OD2	2.44	0.50
1:K:18:SER:HG	1:K:155:TYR:HH	1.53	0.50
1:D:105:LYS:NZ	1:E:12:ASP:OD2	2.46	0.48
1:C:76:ARG:NH1	1:D:205:GLU:OE2	2.47	0.47
1:L:18:SER:OG	1:L:155:TYR:OH	2.31	0.47
2:K:409:C14:H032	2:L:410:C14:H072	1.98	0.46
2:D:410:C14:H072	2:D:411:C14:H032	1.98	0.46
2:E:409:C14:H032	2:F:410:C14:H072	1.98	0.46
2:G:406:C14:H072	2:L:401:C14:H032	1.98	0.46
2:C:410:C14:H032	2:D:409:C14:H072	1.98	0.46
2:J:410:C14:H072	2:J:411:C14:H032	1.98	0.46
2:A:406:C14:H072	2:F:401:C14:H032	1.98	0.45
2:G:407:C14:H032	2:H:409:C14:H072	1.98	0.45
2:I:410:C14:H032	2:J:409:C14:H072	1.98	0.45

Continued on next page...

Continued from previous page...

Atom-1	Atom-2	Interatomic distance (Å)	Clash overlap (Å)
2:A:407:C14:H032	2:B:409:C14:H072	1.98	0.45
1:J:49:GLN:NE2	1:K:47:ASP:OD2	2.49	0.45
2:H:410:C14:H032	2:I:409:C14:H072	1.98	0.45
2:B:410:C14:H032	2:C:409:C14:H072	1.98	0.45
1:A:53:ARG:NH2	1:F:63:ASN:OD1	2.50	0.44
1:E:63:ASN:OD1	1:F:53:ARG:NH2	2.50	0.44
1:F:35:LEU:HD23	1:F:35:LEU:HA	1.86	0.44
1:E:29:LEU:HD11	1:E:216:VAL:HG22	2.00	0.44
1:G:35:LEU:HD23	1:G:35:LEU:HA	1.86	0.44
1:F:47:ASP:OD1	1:F:47:ASP:N	2.49	0.44
1:G:47:ASP:OD1	1:G:47:ASP:N	2.49	0.44
1:L:29:LEU:HD11	1:L:216:VAL:HG22	2.00	0.44
1:F:29:LEU:HD11	1:F:216:VAL:HG22	2.00	0.44
1:G:29:LEU:HD11	1:G:216:VAL:HG22	2.00	0.44
1:D:167:VAL:HG22	1:D:221:LEU:HD11	2.00	0.44
1:F:167:VAL:HG22	1:F:221:LEU:HD11	2.00	0.44
1:K:167:VAL:HG22	1:K:221:LEU:HD11	2.00	0.44
1:E:167:VAL:HG22	1:E:221:LEU:HD11	2.00	0.44
1:G:39:THR:HG21	2:L:409:C14:H091	2.00	0.44
1:G:167:VAL:HG22	1:G:221:LEU:HD11	2.00	0.44
1:K:47:ASP:OD1	1:K:47:ASP:N	2.49	0.44
1:L:35:LEU:HD23	1:L:35:LEU:HA	1.86	0.44
1:L:167:VAL:HG22	1:L:221:LEU:HD11	2.00	0.44
1:E:35:LEU:HD23	1:E:35:LEU:HA	1.86	0.44
1:H:167:VAL:HG22	1:H:221:LEU:HD11	2.00	0.44
1:H:181:LEU:HD23	1:H:181:LEU:HA	1.83	0.44
1:A:63:ASN:OD1	1:B:53:ARG:NH2	2.51	0.43
1:A:167:VAL:HG22	1:A:221:LEU:HD11	2.00	0.43
1:E:181:LEU:HD23	1:E:181:LEU:HA	1.83	0.43
1:I:60:GLY:HA3	1:J:199:PHE:CD2	2.53	0.43
1:K:29:LEU:HD11	1:K:216:VAL:HG22	2.00	0.43
1:D:29:LEU:HD11	1:D:216:VAL:HG22	2.00	0.43
1:A:181:LEU:HA	1:A:181:LEU:HD23	1.83	0.43
1:C:167:VAL:HG22	1:C:221:LEU:HD11	2.00	0.43
1:D:47:ASP:OD1	1:D:47:ASP:N	2.49	0.43
1:I:35:LEU:HD23	1:I:35:LEU:HA	1.86	0.43
1:A:29:LEU:HD11	1:A:216:VAL:HG22	2.00	0.43
1:J:167:VAL:HG22	1:J:221:LEU:HD11	2.00	0.43
1:L:181:LEU:HD23	1:L:181:LEU:HA	1.83	0.43
1:H:29:LEU:HD11	1:H:216:VAL:HG22	2.00	0.43
1:B:35:LEU:HD23	1:B:35:LEU:HA	1.86	0.43

Continued on next page...

Continued from previous page...

Atom-1	Atom-2	Interatomic distance (Å)	Clash overlap (Å)
1:C:29:LEU:HD11	1:C:216:VAL:HG22	2.00	0.43
1:I:167:VAL:HG22	1:I:221:LEU:HD11	2.00	0.43
1:A:35:LEU:HD23	1:A:35:LEU:HA	1.86	0.43
1:D:170:LEU:HD23	1:D:170:LEU:HA	1.90	0.43
1:J:29:LEU:HD11	1:J:216:VAL:HG22	2.00	0.43
1:B:29:LEU:HD11	1:B:216:VAL:HG22	2.00	0.43
1:B:167:VAL:HG22	1:B:221:LEU:HD11	2.00	0.43
1:I:29:LEU:HD11	1:I:216:VAL:HG22	2.00	0.43
1:F:181:LEU:HD23	1:F:181:LEU:HA	1.83	0.42
1:J:170:LEU:HD23	1:J:170:LEU:HA	1.90	0.42
1:G:19:THR:OG1	1:G:20:ALA:N	2.53	0.42
1:G:181:LEU:HD23	1:G:181:LEU:HA	1.83	0.42
1:B:19:THR:OG1	1:B:20:ALA:N	2.53	0.42
1:F:19:THR:OG1	1:F:20:ALA:N	2.53	0.42
1:I:19:THR:OG1	1:I:20:ALA:N	2.53	0.42
1:K:35:LEU:HD23	1:K:35:LEU:HA	1.86	0.42
1:H:19:THR:OG1	1:H:20:ALA:N	2.53	0.42
1:A:19:THR:OG1	1:A:20:ALA:N	2.53	0.42
1:D:35:LEU:HA	1:D:35:LEU:HD23	1.86	0.42
1:E:19:THR:OG1	1:E:20:ALA:N	2.53	0.42
1:G:18:SER:OG	1:G:155:TYR:OH	2.31	0.42
1:L:19:THR:OG1	1:L:20:ALA:N	2.53	0.42
1:C:170:LEU:HD23	1:C:170:LEU:HA	1.90	0.42
1:C:19:THR:OG1	1:C:20:ALA:N	2.53	0.41
2:F:406:C14:H091	2:F:406:C14:H122	1.92	0.41
1:J:19:THR:OG1	1:J:20:ALA:N	2.53	0.41
1:J:35:LEU:HD23	1:J:35:LEU:HA	1.86	0.41
2:G:402:C14:H091	2:G:402:C14:H122	1.92	0.41
1:J:216:VAL:HA	1:J:219:VAL:HG12	2.03	0.41
1:C:216:VAL:HA	1:C:219:VAL:HG12	2.03	0.41
1:D:19:THR:OG1	1:D:20:ALA:N	2.53	0.41
1:K:19:THR:OG1	1:K:20:ALA:N	2.53	0.41
1:H:218:LEU:HA	1:H:218:LEU:HD23	1.88	0.41
1:B:105:LYS:NZ	1:C:12:ASP:OD2	2.54	0.41
1:C:35:LEU:HD23	1:C:35:LEU:HA	1.86	0.41
1:E:191:PRO:HG3	1:F:199:PHE:CE1	2.56	0.41
1:E:19:THR:HG23	1:E:22:GLY:H	1.86	0.41
1:F:19:THR:HG23	1:F:22:GLY:H	1.86	0.41
1:G:19:THR:HG23	1:G:22:GLY:H	1.86	0.41
1:K:203:PRO:O	1:K:207:THR:OG1	2.29	0.41
1:A:218:LEU:HA	1:A:218:LEU:HD23	1.88	0.40

Continued on next page...

Continued from previous page...

Atom-1	Atom-2	Interatomic distance (Å)	Clash overlap (Å)
1:D:203:PRO:O	1:D:207:THR:OG1	2.29	0.40
1:E:216:VAL:HA	1:E:219:VAL:HG12	2.03	0.40
1:L:19:THR:HG23	1:L:22:GLY:H	1.86	0.40
2:C:403:C14:H091	2:C:403:C14:H062	1.91	0.40
2:D:405:C14:H091	2:D:405:C14:H122	1.92	0.40
2:K:405:C14:H091	2:K:405:C14:H122	1.92	0.40
1:G:63:ASN:OD1	1:H:53:ARG:NH2	2.54	0.40
1:I:3:ASP:OD2	1:J:4:TRP:HB2	2.22	0.40
1:K:108:LYS:HB2	1:K:108:LYS:HE2	1.94	0.40
1:L:216:VAL:HA	1:L:219:VAL:HG12	2.03	0.40
1:B:216:VAL:HA	1:B:219:VAL:HG12	2.03	0.40
1:C:19:THR:HG23	1:C:22:GLY:H	1.86	0.40

There are no symmetry-related clashes.

5.3 Torsion angles [i](#)

5.3.1 Protein backbone [i](#)

In the following table, the Percentiles column shows the percent Ramachandran outliers of the chain as a percentile score with respect to all PDB entries followed by that with respect to all EM entries.

The Analysed column shows the number of residues for which the backbone conformation was analysed, and the total number of residues.

Mol	Chain	Analysed	Favoured	Allowed	Outliers	Percentiles	
1	A	192/382 (50%)	187 (97%)	5 (3%)	0	100	100
1	B	192/382 (50%)	186 (97%)	6 (3%)	0	100	100
1	C	192/382 (50%)	186 (97%)	6 (3%)	0	100	100
1	D	192/382 (50%)	187 (97%)	5 (3%)	0	100	100
1	E	192/382 (50%)	187 (97%)	5 (3%)	0	100	100
1	F	192/382 (50%)	187 (97%)	5 (3%)	0	100	100
1	G	192/382 (50%)	187 (97%)	5 (3%)	0	100	100
1	H	192/382 (50%)	187 (97%)	5 (3%)	0	100	100
1	I	192/382 (50%)	187 (97%)	5 (3%)	0	100	100
1	J	192/382 (50%)	186 (97%)	6 (3%)	0	100	100

Continued on next page...

Continued from previous page...

Mol	Chain	Analysed	Favoured	Allowed	Outliers	Percentiles	
1	K	192/382 (50%)	186 (97%)	6 (3%)	0	100	100
1	L	192/382 (50%)	187 (97%)	5 (3%)	0	100	100
All	All	2304/4584 (50%)	2240 (97%)	64 (3%)	0	100	100

There are no Ramachandran outliers to report.

5.3.2 Protein sidechains [i](#)

In the following table, the Percentiles column shows the percent sidechain outliers of the chain as a percentile score with respect to all PDB entries followed by that with respect to all EM entries.

The Analysed column shows the number of residues for which the sidechain conformation was analysed, and the total number of residues.

Mol	Chain	Analysed	Rotameric	Outliers	Percentiles	
1	A	175/333 (53%)	168 (96%)	7 (4%)	27	56
1	B	175/333 (53%)	168 (96%)	7 (4%)	27	56
1	C	175/333 (53%)	168 (96%)	7 (4%)	27	56
1	D	175/333 (53%)	168 (96%)	7 (4%)	27	56
1	E	175/333 (53%)	168 (96%)	7 (4%)	27	56
1	F	175/333 (53%)	168 (96%)	7 (4%)	27	56
1	G	175/333 (53%)	168 (96%)	7 (4%)	27	56
1	H	175/333 (53%)	168 (96%)	7 (4%)	27	56
1	I	175/333 (53%)	168 (96%)	7 (4%)	27	56
1	J	175/333 (53%)	168 (96%)	7 (4%)	27	56
1	K	175/333 (53%)	168 (96%)	7 (4%)	27	56
1	L	175/333 (53%)	168 (96%)	7 (4%)	27	56
All	All	2100/3996 (53%)	2016 (96%)	84 (4%)	29	56

All (84) residues with a non-rotameric sidechain are listed below:

Mol	Chain	Res	Type
1	A	5	SER
1	A	26	LEU
1	A	50	SER
1	A	89	THR

Continued on next page...

Continued from previous page...

Mol	Chain	Res	Type
1	A	106	LEU
1	A	216	VAL
1	A	226	ILE
1	B	5	SER
1	B	26	LEU
1	B	50	SER
1	B	89	THR
1	B	106	LEU
1	B	216	VAL
1	B	226	ILE
1	C	5	SER
1	C	26	LEU
1	C	50	SER
1	C	89	THR
1	C	106	LEU
1	C	216	VAL
1	C	226	ILE
1	D	5	SER
1	D	26	LEU
1	D	50	SER
1	D	89	THR
1	D	106	LEU
1	D	216	VAL
1	D	226	ILE
1	E	5	SER
1	E	26	LEU
1	E	50	SER
1	E	89	THR
1	E	106	LEU
1	E	216	VAL
1	E	226	ILE
1	F	5	SER
1	F	26	LEU
1	F	50	SER
1	F	89	THR
1	F	106	LEU
1	F	216	VAL
1	F	226	ILE
1	G	5	SER
1	G	26	LEU
1	G	50	SER
1	G	89	THR

Continued on next page...

Continued from previous page...

Mol	Chain	Res	Type
1	G	106	LEU
1	G	216	VAL
1	G	226	ILE
1	H	5	SER
1	H	26	LEU
1	H	50	SER
1	H	89	THR
1	H	106	LEU
1	H	216	VAL
1	H	226	ILE
1	I	5	SER
1	I	26	LEU
1	I	50	SER
1	I	89	THR
1	I	106	LEU
1	I	216	VAL
1	I	226	ILE
1	J	5	SER
1	J	26	LEU
1	J	50	SER
1	J	89	THR
1	J	106	LEU
1	J	216	VAL
1	J	226	ILE
1	K	5	SER
1	K	26	LEU
1	K	50	SER
1	K	89	THR
1	K	106	LEU
1	K	216	VAL
1	K	226	ILE
1	L	5	SER
1	L	26	LEU
1	L	50	SER
1	L	89	THR
1	L	106	LEU
1	L	216	VAL
1	L	226	ILE

Sometimes sidechains can be flipped to improve hydrogen bonding and reduce clashes. All (30) such sidechains are listed below:

Mol	Chain	Res	Type
1	A	49	GLN
1	A	224	ASN
1	B	49	GLN
1	B	58	GLN
1	B	224	ASN
1	C	49	GLN
1	C	58	GLN
1	C	224	ASN
1	D	49	GLN
1	D	224	ASN
1	E	49	GLN
1	E	224	ASN
1	F	49	GLN
1	F	58	GLN
1	F	224	ASN
1	G	49	GLN
1	G	58	GLN
1	G	224	ASN
1	H	49	GLN
1	H	224	ASN
1	I	49	GLN
1	I	58	GLN
1	I	224	ASN
1	J	49	GLN
1	J	224	ASN
1	K	49	GLN
1	K	224	ASN
1	L	49	GLN
1	L	58	GLN
1	L	224	ASN

5.3.3 RNA [i](#)

There are no RNA molecules in this entry.

5.4 Non-standard residues in protein, DNA, RNA chains [i](#)

There are no non-standard protein/DNA/RNA residues in this entry.

5.5 Carbohydrates [i](#)

There are no oligosaccharides in this entry.

5.6 Ligand geometry

120 ligands are modelled in this entry.

In the following table, the Counts columns list the number of bonds (or angles) for which Mogul statistics could be retrieved, the number of bonds (or angles) that are observed in the model and the number of bonds (or angles) that are defined in the Chemical Component Dictionary. The Link column lists molecule types, if any, to which the group is linked. The Z score for a bond length (or angle) is the number of standard deviations the observed value is removed from the expected value. A bond length (or angle) with $|Z| > 2$ is considered an outlier worth inspection. RMSZ is the root-mean-square of all Z scores of the bond lengths (or angles).

Mol	Type	Chain	Res	Link	Bond lengths			Bond angles		
					Counts	RMSZ	# Z > 2	Counts	RMSZ	# Z > 2
2	C14	D	402	-	13,13,13	0.26	0	12,12,12	0.89	0
2	C14	H	407	-	13,13,13	0.23	0	12,12,12	0.93	0
2	C14	L	402	-	13,13,13	0.21	0	12,12,12	1.00	0
2	C14	B	407	-	13,13,13	0.23	0	12,12,12	0.93	0
2	C14	A	410	-	13,13,13	0.28	0	12,12,12	0.80	0
2	C14	E	404	-	13,13,13	0.22	0	12,12,12	0.97	0
2	C14	A	404	-	13,13,13	0.24	0	12,12,12	0.93	0
2	C14	B	409	-	13,13,13	0.26	0	12,12,12	0.88	0
2	C14	F	402	-	13,13,13	0.21	0	12,12,12	1.00	0
2	C14	L	404	-	13,13,13	0.29	0	12,12,12	0.81	0
2	C14	C	406	-	13,13,13	0.27	0	12,12,12	0.84	0
2	C14	K	407	-	13,13,13	0.23	0	12,12,12	0.92	0
2	C14	E	405	-	13,13,13	0.27	0	12,12,12	0.87	0
2	C14	K	409	-	13,13,13	0.27	0	12,12,12	0.79	0
2	C14	L	406	-	13,13,13	0.27	0	12,12,12	0.88	0
2	C14	C	405	-	13,13,13	0.27	0	12,12,12	0.87	0
2	C14	H	408	-	13,13,13	0.26	0	12,12,12	0.85	0
2	C14	D	408	-	13,13,13	0.26	0	12,12,12	0.85	0
2	C14	I	402	-	13,13,13	0.27	0	12,12,12	0.90	0
2	C14	F	403	-	13,13,13	0.27	0	12,12,12	0.89	0
2	C14	K	408	-	13,13,13	0.26	0	12,12,12	0.85	0
2	C14	A	402	-	13,13,13	0.27	0	12,12,12	0.87	0
2	C14	E	401	-	13,13,13	0.21	0	12,12,12	1.01	0
2	C14	J	405	-	13,13,13	0.27	0	12,12,12	0.87	0
2	C14	D	403	-	13,13,13	0.29	0	12,12,12	0.81	0
2	C14	J	404	-	13,13,13	0.22	0	12,12,12	0.97	0
2	C14	C	402	-	13,13,13	0.27	0	12,12,12	0.90	0
2	C14	G	405	-	13,13,13	0.26	0	12,12,12	0.85	0
2	C14	C	404	-	13,13,13	0.23	0	12,12,12	0.97	0
2	C14	F	401	-	13,13,13	0.28	0	12,12,12	0.79	0
2	C14	G	408	-	13,13,13	0.21	0	12,12,12	1.00	0
2	C14	K	402	-	13,13,13	0.27	0	12,12,12	0.90	0

Mol	Type	Chain	Res	Link	Bond lengths			Bond angles		
					Counts	RMSZ	# Z > 2	Counts	RMSZ	# Z > 2
2	C14	H	401	-	13,13,13	0.21	0	12,12,12	1.00	0
2	C14	A	406	-	13,13,13	0.26	0	12,12,12	0.88	0
2	C14	G	404	-	13,13,13	0.23	0	12,12,12	0.93	0
2	C14	I	407	-	13,13,13	0.23	0	12,12,12	0.92	0
2	C14	I	408	-	13,13,13	0.25	0	12,12,12	0.85	0
2	C14	C	403	-	13,13,13	0.29	0	12,12,12	0.81	0
2	C14	D	404	-	13,13,13	0.22	0	12,12,12	0.96	0
2	C14	I	404	-	13,13,13	0.22	0	12,12,12	0.96	0
2	C14	E	402	-	13,13,13	0.27	0	12,12,12	0.90	0
2	C14	K	406	-	13,13,13	0.27	0	12,12,12	0.84	0
2	C14	H	405	-	13,13,13	0.27	0	12,12,12	0.88	0
2	C14	D	411	-	13,13,13	0.28	0	12,12,12	0.79	0
2	C14	B	403	-	13,13,13	0.29	0	12,12,12	0.81	0
2	C14	L	403	-	13,13,13	0.27	0	12,12,12	0.90	0
2	C14	I	403	-	13,13,13	0.29	0	12,12,12	0.81	0
2	C14	D	401	-	13,13,13	0.21	0	12,12,12	1.00	0
2	C14	E	408	-	13,13,13	0.26	0	12,12,12	0.85	0
2	C14	F	407	-	13,13,13	0.28	0	12,12,12	0.84	0
2	C14	F	405	-	13,13,13	0.22	0	12,12,12	0.96	0
2	C14	B	401	-	13,13,13	0.21	0	12,12,12	1.00	0
2	C14	J	410	-	13,13,13	0.26	0	12,12,12	0.88	0
2	C14	K	404	-	13,13,13	0.22	0	12,12,12	0.96	0
2	C14	E	409	-	13,13,13	0.28	0	12,12,12	0.79	0
2	C14	A	409	-	13,13,13	0.26	0	12,12,12	0.89	0
2	C14	J	403	-	13,13,13	0.28	0	12,12,12	0.80	0
2	C14	K	403	-	13,13,13	0.28	0	12,12,12	0.80	0
2	C14	A	407	-	13,13,13	0.28	0	12,12,12	0.79	0
2	C14	G	410	-	13,13,13	0.29	0	12,12,12	0.81	0
2	C14	J	409	-	13,13,13	0.25	0	12,12,12	0.88	0
2	C14	G	401	-	13,13,13	0.22	0	12,12,12	0.97	0
2	C14	D	409	-	13,13,13	0.26	0	12,12,12	0.88	0
2	C14	F	404	-	13,13,13	0.29	0	12,12,12	0.81	0
2	C14	L	408	-	13,13,13	0.23	0	12,12,12	0.92	0
2	C14	B	402	-	13,13,13	0.27	0	12,12,12	0.90	0
2	C14	J	402	-	13,13,13	0.27	0	12,12,12	0.90	0
2	C14	H	404	-	13,13,13	0.22	0	12,12,12	0.97	0
2	C14	C	408	-	13,13,13	0.26	0	12,12,12	0.86	0
2	C14	A	403	-	13,13,13	0.27	0	12,12,12	0.84	0
2	C14	B	404	-	13,13,13	0.22	0	12,12,12	0.96	0
2	C14	G	402	-	13,13,13	0.27	0	12,12,12	0.87	0
2	C14	G	409	-	13,13,13	0.27	0	12,12,12	0.90	0
2	C14	B	405	-	13,13,13	0.27	0	12,12,12	0.88	0
2	C14	L	410	-	13,13,13	0.26	0	12,12,12	0.88	0

Mol	Type	Chain	Res	Link	Bond lengths			Bond angles		
					Counts	RMSZ	# Z > 2	Counts	RMSZ	# Z > 2
2	C14	I	410	-	13,13,13	0.28	0	12,12,12	0.79	0
2	C14	L	401	-	13,13,13	0.28	0	12,12,12	0.79	0
2	C14	I	401	-	13,13,13	0.21	0	12,12,12	1.00	0
2	C14	H	410	-	13,13,13	0.28	0	12,12,12	0.79	0
2	C14	F	409	-	13,13,13	0.26	0	12,12,12	0.85	0
2	C14	K	401	-	13,13,13	0.21	0	12,12,12	1.00	0
2	C14	B	408	-	13,13,13	0.26	0	12,12,12	0.85	0
2	C14	H	409	-	13,13,13	0.26	0	12,12,12	0.88	0
2	C14	D	405	-	13,13,13	0.27	0	12,12,12	0.88	0
2	C14	G	406	-	13,13,13	0.26	0	12,12,12	0.88	0
2	C14	L	409	-	13,13,13	0.26	0	12,12,12	0.86	0
2	C14	I	409	-	13,13,13	0.26	0	12,12,12	0.88	0
2	C14	D	407	-	13,13,13	0.23	0	12,12,12	0.92	0
2	C14	C	410	-	13,13,13	0.28	0	12,12,12	0.79	0
2	C14	C	401	-	13,13,13	0.21	0	12,12,12	1.00	0
2	C14	E	407	-	13,13,13	0.23	0	12,12,12	0.93	0
2	C14	F	410	-	13,13,13	0.26	0	12,12,12	0.88	0
2	C14	H	402	-	13,13,13	0.27	0	12,12,12	0.90	0
2	C14	D	406	-	13,13,13	0.27	0	12,12,12	0.84	0
2	C14	J	407	-	13,13,13	0.23	0	12,12,12	0.92	0
2	C14	E	406	-	13,13,13	0.27	0	12,12,12	0.84	0
2	C14	A	405	-	13,13,13	0.25	0	12,12,12	0.85	0
2	C14	E	403	-	13,13,13	0.28	0	12,12,12	0.80	0
2	C14	H	403	-	13,13,13	0.29	0	12,12,12	0.81	0
2	C14	B	406	-	13,13,13	0.28	0	12,12,12	0.84	0
2	C14	I	406	-	13,13,13	0.27	0	12,12,12	0.84	0
2	C14	B	410	-	13,13,13	0.28	0	12,12,12	0.79	0
2	C14	F	406	-	13,13,13	0.27	0	12,12,12	0.87	0
2	C14	A	408	-	13,13,13	0.21	0	12,12,12	1.00	0
2	C14	J	408	-	13,13,13	0.26	0	12,12,12	0.85	0
2	C14	J	406	-	13,13,13	0.27	0	12,12,12	0.85	0
2	C14	J	411	-	13,13,13	0.28	0	12,12,12	0.79	0
2	C14	H	406	-	13,13,13	0.27	0	12,12,12	0.84	0
2	C14	C	409	-	13,13,13	0.26	0	12,12,12	0.88	0
2	C14	D	410	-	13,13,13	0.26	0	12,12,12	0.88	0
2	C14	A	401	-	13,13,13	0.23	0	12,12,12	0.97	0
2	C14	C	407	-	13,13,13	0.23	0	12,12,12	0.92	0
2	C14	L	405	-	13,13,13	0.22	0	12,12,12	0.96	0
2	C14	I	405	-	13,13,13	0.27	0	12,12,12	0.87	0
2	C14	G	407	-	13,13,13	0.28	0	12,12,12	0.79	0
2	C14	J	401	-	13,13,13	0.21	0	12,12,12	1.01	0
2	C14	F	408	-	13,13,13	0.23	0	12,12,12	0.92	0
2	C14	L	407	-	13,13,13	0.27	0	12,12,12	0.84	0

Mol	Type	Chain	Res	Link	Bond lengths			Bond angles		
					Counts	RMSZ	# Z > 2	Counts	RMSZ	# Z > 2
2	C14	K	405	-	13,13,13	0.27	0	12,12,12	0.88	0
2	C14	G	403	-	13,13,13	0.27	0	12,12,12	0.84	0

In the following table, the Chirals column lists the number of chiral outliers, the number of chiral centers analysed, the number of these observed in the model and the number defined in the Chemical Component Dictionary. Similar counts are reported in the Torsion and Rings columns. '-' means no outliers of that kind were identified.

Mol	Type	Chain	Res	Link	Chirals	Torsions	Rings
2	C14	D	402	-	-	3/11/11/11	-
2	C14	H	407	-	-	3/11/11/11	-
2	C14	L	402	-	-	1/11/11/11	-
2	C14	B	407	-	-	3/11/11/11	-
2	C14	A	410	-	-	2/11/11/11	-
2	C14	E	404	-	-	1/11/11/11	-
2	C14	A	404	-	-	3/11/11/11	-
2	C14	B	409	-	-	6/11/11/11	-
2	C14	F	402	-	-	1/11/11/11	-
2	C14	L	404	-	-	2/11/11/11	-
2	C14	C	406	-	-	1/11/11/11	-
2	C14	K	407	-	-	3/11/11/11	-
2	C14	E	405	-	-	1/11/11/11	-
2	C14	K	409	-	-	5/11/11/11	-
2	C14	L	406	-	-	1/11/11/11	-
2	C14	C	405	-	-	1/11/11/11	-
2	C14	H	408	-	-	2/11/11/11	-
2	C14	D	408	-	-	2/11/11/11	-
2	C14	I	402	-	-	3/11/11/11	-
2	C14	F	403	-	-	3/11/11/11	-
2	C14	K	408	-	-	2/11/11/11	-
2	C14	A	402	-	-	1/11/11/11	-
2	C14	E	401	-	-	1/11/11/11	-
2	C14	J	405	-	-	1/11/11/11	-
2	C14	D	403	-	-	2/11/11/11	-
2	C14	J	404	-	-	1/11/11/11	-
2	C14	C	402	-	-	3/11/11/11	-
2	C14	G	405	-	-	2/11/11/11	-
2	C14	C	404	-	-	1/11/11/11	-
2	C14	F	401	-	-	5/11/11/11	-

Continued on next page...

Continued from previous page...

Mol	Type	Chain	Res	Link	Chirals	Torsions	Rings
2	C14	G	408	-	-	1/11/11/11	-
2	C14	K	402	-	-	3/11/11/11	-
2	C14	H	401	-	-	1/11/11/11	-
2	C14	A	406	-	-	6/11/11/11	-
2	C14	G	404	-	-	3/11/11/11	-
2	C14	I	407	-	-	3/11/11/11	-
2	C14	I	408	-	-	2/11/11/11	-
2	C14	C	403	-	-	2/11/11/11	-
2	C14	D	404	-	-	1/11/11/11	-
2	C14	I	404	-	-	1/11/11/11	-
2	C14	E	402	-	-	3/11/11/11	-
2	C14	K	406	-	-	1/11/11/11	-
2	C14	H	405	-	-	1/11/11/11	-
2	C14	D	411	-	-	5/11/11/11	-
2	C14	B	403	-	-	2/11/11/11	-
2	C14	L	403	-	-	3/11/11/11	-
2	C14	I	403	-	-	2/11/11/11	-
2	C14	D	401	-	-	1/11/11/11	-
2	C14	E	408	-	-	2/11/11/11	-
2	C14	F	407	-	-	1/11/11/11	-
2	C14	F	405	-	-	1/11/11/11	-
2	C14	B	401	-	-	1/11/11/11	-
2	C14	J	410	-	-	6/11/11/11	-
2	C14	K	404	-	-	1/11/11/11	-
2	C14	E	409	-	-	5/11/11/11	-
2	C14	A	409	-	-	3/11/11/11	-
2	C14	J	403	-	-	2/11/11/11	-
2	C14	K	403	-	-	2/11/11/11	-
2	C14	A	407	-	-	5/11/11/11	-
2	C14	G	410	-	-	2/11/11/11	-
2	C14	J	409	-	-	6/11/11/11	-
2	C14	G	401	-	-	1/11/11/11	-
2	C14	D	409	-	-	6/11/11/11	-
2	C14	F	404	-	-	2/11/11/11	-
2	C14	L	408	-	-	3/11/11/11	-
2	C14	B	402	-	-	3/11/11/11	-

Continued on next page...

Continued from previous page...

Mol	Type	Chain	Res	Link	Chirals	Torsions	Rings
2	C14	J	402	-	-	3/11/11/11	-
2	C14	H	404	-	-	1/11/11/11	-
2	C14	C	408	-	-	2/11/11/11	-
2	C14	A	403	-	-	1/11/11/11	-
2	C14	B	404	-	-	1/11/11/11	-
2	C14	G	402	-	-	1/11/11/11	-
2	C14	G	409	-	-	3/11/11/11	-
2	C14	B	405	-	-	1/11/11/11	-
2	C14	L	410	-	-	6/11/11/11	-
2	C14	I	410	-	-	5/11/11/11	-
2	C14	L	401	-	-	5/11/11/11	-
2	C14	I	401	-	-	1/11/11/11	-
2	C14	H	410	-	-	5/11/11/11	-
2	C14	F	409	-	-	2/11/11/11	-
2	C14	K	401	-	-	1/11/11/11	-
2	C14	B	408	-	-	2/11/11/11	-
2	C14	H	409	-	-	6/11/11/11	-
2	C14	D	405	-	-	1/11/11/11	-
2	C14	G	406	-	-	6/11/11/11	-
2	C14	L	409	-	-	2/11/11/11	-
2	C14	I	409	-	-	6/11/11/11	-
2	C14	D	407	-	-	3/11/11/11	-
2	C14	C	410	-	-	5/11/11/11	-
2	C14	C	401	-	-	1/11/11/11	-
2	C14	E	407	-	-	3/11/11/11	-
2	C14	F	410	-	-	6/11/11/11	-
2	C14	H	402	-	-	3/11/11/11	-
2	C14	D	406	-	-	1/11/11/11	-
2	C14	J	407	-	-	3/11/11/11	-
2	C14	E	406	-	-	1/11/11/11	-
2	C14	A	405	-	-	2/11/11/11	-
2	C14	E	403	-	-	2/11/11/11	-
2	C14	H	403	-	-	2/11/11/11	-
2	C14	B	406	-	-	1/11/11/11	-
2	C14	I	406	-	-	1/11/11/11	-
2	C14	B	410	-	-	5/11/11/11	-
2	C14	F	406	-	-	1/11/11/11	-

Continued on next page...

Continued from previous page...

Mol	Type	Chain	Res	Link	Chirals	Torsions	Rings
2	C14	A	408	-	-	1/11/11/11	-
2	C14	J	408	-	-	2/11/11/11	-
2	C14	J	406	-	-	1/11/11/11	-
2	C14	J	411	-	-	5/11/11/11	-
2	C14	H	406	-	-	1/11/11/11	-
2	C14	C	409	-	-	6/11/11/11	-
2	C14	D	410	-	-	6/11/11/11	-
2	C14	A	401	-	-	1/11/11/11	-
2	C14	C	407	-	-	3/11/11/11	-
2	C14	L	405	-	-	1/11/11/11	-
2	C14	I	405	-	-	1/11/11/11	-
2	C14	G	407	-	-	5/11/11/11	-
2	C14	J	401	-	-	1/11/11/11	-
2	C14	F	408	-	-	3/11/11/11	-
2	C14	L	407	-	-	1/11/11/11	-
2	C14	K	405	-	-	1/11/11/11	-
2	C14	G	403	-	-	1/11/11/11	-

There are no bond length outliers.

There are no bond angle outliers.

There are no chirality outliers.

All (300) torsion outliers are listed below:

Mol	Chain	Res	Type	Atoms
2	A	409	C14	C05-C06-C07-C08
2	B	402	C14	C05-C06-C07-C08
2	C	402	C14	C05-C06-C07-C08
2	F	403	C14	C05-C06-C07-C08
2	G	409	C14	C05-C06-C07-C08
2	I	402	C14	C05-C06-C07-C08
2	J	402	C14	C05-C06-C07-C08
2	L	403	C14	C05-C06-C07-C08
2	D	402	C14	C05-C06-C07-C08
2	E	402	C14	C05-C06-C07-C08
2	H	402	C14	C05-C06-C07-C08
2	K	402	C14	C05-C06-C07-C08
2	I	402	C14	C04-C05-C06-C07
2	A	409	C14	C04-C05-C06-C07
2	B	402	C14	C04-C05-C06-C07

Continued on next page...

Continued from previous page...

Mol	Chain	Res	Type	Atoms
2	C	402	C14	C04-C05-C06-C07
2	D	402	C14	C04-C05-C06-C07
2	E	402	C14	C04-C05-C06-C07
2	F	403	C14	C04-C05-C06-C07
2	G	409	C14	C04-C05-C06-C07
2	H	402	C14	C04-C05-C06-C07
2	J	402	C14	C04-C05-C06-C07
2	K	402	C14	C04-C05-C06-C07
2	L	403	C14	C04-C05-C06-C07
2	A	406	C14	C06-C07-C08-C09
2	B	409	C14	C06-C07-C08-C09
2	C	409	C14	C06-C07-C08-C09
2	D	409	C14	C06-C07-C08-C09
2	D	410	C14	C06-C07-C08-C09
2	F	410	C14	C06-C07-C08-C09
2	H	409	C14	C06-C07-C08-C09
2	I	409	C14	C06-C07-C08-C09
2	J	409	C14	C06-C07-C08-C09
2	L	410	C14	C06-C07-C08-C09
2	G	406	C14	C06-C07-C08-C09
2	J	410	C14	C06-C07-C08-C09
2	A	407	C14	C08-C09-C10-C11
2	B	410	C14	C08-C09-C10-C11
2	C	410	C14	C08-C09-C10-C11
2	D	411	C14	C08-C09-C10-C11
2	E	409	C14	C08-C09-C10-C11
2	F	401	C14	C08-C09-C10-C11
2	G	407	C14	C08-C09-C10-C11
2	H	410	C14	C08-C09-C10-C11
2	I	410	C14	C08-C09-C10-C11
2	K	409	C14	C08-C09-C10-C11
2	L	401	C14	C08-C09-C10-C11
2	J	411	C14	C08-C09-C10-C11
2	B	403	C14	C08-C09-C10-C11
2	D	403	C14	C08-C09-C10-C11
2	F	404	C14	C08-C09-C10-C11
2	G	410	C14	C08-C09-C10-C11
2	H	403	C14	C08-C09-C10-C11
2	K	403	C14	C08-C09-C10-C11
2	A	406	C14	C07-C08-C09-C10
2	A	410	C14	C08-C09-C10-C11
2	B	409	C14	C07-C08-C09-C10

Continued on next page...

Continued from previous page...

Mol	Chain	Res	Type	Atoms
2	C	403	C14	C08-C09-C10-C11
2	C	409	C14	C07-C08-C09-C10
2	D	409	C14	C07-C08-C09-C10
2	D	410	C14	C07-C08-C09-C10
2	E	403	C14	C08-C09-C10-C11
2	F	410	C14	C07-C08-C09-C10
2	G	406	C14	C07-C08-C09-C10
2	H	409	C14	C07-C08-C09-C10
2	I	403	C14	C08-C09-C10-C11
2	I	409	C14	C07-C08-C09-C10
2	J	403	C14	C08-C09-C10-C11
2	J	409	C14	C07-C08-C09-C10
2	J	410	C14	C07-C08-C09-C10
2	L	404	C14	C08-C09-C10-C11
2	L	410	C14	C07-C08-C09-C10
2	B	409	C14	C05-C06-C07-C08
2	D	409	C14	C05-C06-C07-C08
2	G	406	C14	C05-C06-C07-C08
2	H	409	C14	C05-C06-C07-C08
2	J	409	C14	C05-C06-C07-C08
2	A	406	C14	C05-C06-C07-C08
2	C	409	C14	C05-C06-C07-C08
2	D	410	C14	C05-C06-C07-C08
2	F	410	C14	C05-C06-C07-C08
2	I	409	C14	C05-C06-C07-C08
2	J	410	C14	C05-C06-C07-C08
2	L	410	C14	C05-C06-C07-C08
2	A	409	C14	C06-C07-C08-C09
2	B	402	C14	C06-C07-C08-C09
2	C	402	C14	C06-C07-C08-C09
2	D	402	C14	C06-C07-C08-C09
2	E	402	C14	C06-C07-C08-C09
2	F	403	C14	C06-C07-C08-C09
2	G	409	C14	C06-C07-C08-C09
2	H	402	C14	C06-C07-C08-C09
2	I	402	C14	C06-C07-C08-C09
2	J	402	C14	C06-C07-C08-C09
2	K	402	C14	C06-C07-C08-C09
2	L	403	C14	C06-C07-C08-C09
2	B	408	C14	C06-C07-C08-C09
2	C	408	C14	C06-C07-C08-C09
2	J	408	C14	C06-C07-C08-C09

Continued on next page...

Continued from previous page...

Mol	Chain	Res	Type	Atoms
2	A	405	C14	C06-C07-C08-C09
2	D	408	C14	C06-C07-C08-C09
2	E	408	C14	C06-C07-C08-C09
2	F	409	C14	C06-C07-C08-C09
2	G	405	C14	C06-C07-C08-C09
2	H	408	C14	C06-C07-C08-C09
2	I	408	C14	C06-C07-C08-C09
2	K	408	C14	C06-C07-C08-C09
2	L	409	C14	C06-C07-C08-C09
2	A	407	C14	C11-C12-C13-C14
2	K	409	C14	C11-C12-C13-C14
2	B	410	C14	C11-C12-C13-C14
2	C	410	C14	C11-C12-C13-C14
2	D	411	C14	C11-C12-C13-C14
2	E	409	C14	C11-C12-C13-C14
2	F	401	C14	C11-C12-C13-C14
2	G	407	C14	C11-C12-C13-C14
2	H	410	C14	C11-C12-C13-C14
2	I	410	C14	C11-C12-C13-C14
2	J	411	C14	C11-C12-C13-C14
2	L	401	C14	C11-C12-C13-C14
2	A	405	C14	C08-C09-C10-C11
2	D	408	C14	C08-C09-C10-C11
2	F	409	C14	C08-C09-C10-C11
2	B	408	C14	C08-C09-C10-C11
2	C	408	C14	C08-C09-C10-C11
2	E	408	C14	C08-C09-C10-C11
2	G	405	C14	C08-C09-C10-C11
2	H	408	C14	C08-C09-C10-C11
2	I	408	C14	C08-C09-C10-C11
2	J	408	C14	C08-C09-C10-C11
2	K	408	C14	C08-C09-C10-C11
2	L	409	C14	C08-C09-C10-C11
2	A	406	C14	C01-C02-C03-C04
2	H	409	C14	C01-C02-C03-C04
2	I	409	C14	C01-C02-C03-C04
2	J	409	C14	C01-C02-C03-C04
2	J	410	C14	C01-C02-C03-C04
2	D	409	C14	C01-C02-C03-C04
2	D	410	C14	C01-C02-C03-C04
2	F	410	C14	C01-C02-C03-C04
2	G	406	C14	C01-C02-C03-C04

Continued on next page...

Continued from previous page...

Mol	Chain	Res	Type	Atoms
2	L	410	C14	C01-C02-C03-C04
2	B	409	C14	C01-C02-C03-C04
2	C	409	C14	C01-C02-C03-C04
2	G	404	C14	C04-C05-C06-C07
2	A	404	C14	C04-C05-C06-C07
2	B	407	C14	C04-C05-C06-C07
2	C	407	C14	C04-C05-C06-C07
2	D	407	C14	C04-C05-C06-C07
2	E	407	C14	C04-C05-C06-C07
2	F	408	C14	C04-C05-C06-C07
2	H	407	C14	C04-C05-C06-C07
2	I	407	C14	C04-C05-C06-C07
2	J	407	C14	C04-C05-C06-C07
2	K	407	C14	C04-C05-C06-C07
2	L	408	C14	C04-C05-C06-C07
2	E	409	C14	C10-C11-C12-C13
2	F	401	C14	C10-C11-C12-C13
2	G	407	C14	C10-C11-C12-C13
2	H	410	C14	C10-C11-C12-C13
2	I	410	C14	C10-C11-C12-C13
2	B	410	C14	C10-C11-C12-C13
2	C	410	C14	C10-C11-C12-C13
2	L	401	C14	C10-C11-C12-C13
2	A	407	C14	C10-C11-C12-C13
2	D	411	C14	C10-C11-C12-C13
2	J	411	C14	C10-C11-C12-C13
2	K	409	C14	C10-C11-C12-C13
2	A	407	C14	C03-C04-C05-C06
2	B	410	C14	C03-C04-C05-C06
2	C	410	C14	C03-C04-C05-C06
2	D	411	C14	C03-C04-C05-C06
2	E	409	C14	C03-C04-C05-C06
2	F	401	C14	C03-C04-C05-C06
2	G	407	C14	C03-C04-C05-C06
2	H	410	C14	C03-C04-C05-C06
2	L	401	C14	C03-C04-C05-C06
2	I	410	C14	C03-C04-C05-C06
2	J	411	C14	C03-C04-C05-C06
2	K	409	C14	C03-C04-C05-C06
2	I	409	C14	C04-C05-C06-C07
2	A	406	C14	C04-C05-C06-C07
2	B	409	C14	C04-C05-C06-C07

Continued on next page...

Continued from previous page...

Mol	Chain	Res	Type	Atoms
2	D	410	C14	C04-C05-C06-C07
2	F	410	C14	C04-C05-C06-C07
2	H	409	C14	C04-C05-C06-C07
2	J	409	C14	C04-C05-C06-C07
2	J	410	C14	C04-C05-C06-C07
2	L	410	C14	C04-C05-C06-C07
2	C	409	C14	C04-C05-C06-C07
2	D	409	C14	C04-C05-C06-C07
2	G	406	C14	C04-C05-C06-C07
2	A	406	C14	C02-C03-C04-C05
2	H	409	C14	C02-C03-C04-C05
2	C	409	C14	C02-C03-C04-C05
2	D	409	C14	C02-C03-C04-C05
2	D	410	C14	C02-C03-C04-C05
2	F	410	C14	C02-C03-C04-C05
2	G	406	C14	C02-C03-C04-C05
2	L	410	C14	C02-C03-C04-C05
2	B	409	C14	C02-C03-C04-C05
2	I	409	C14	C02-C03-C04-C05
2	J	409	C14	C02-C03-C04-C05
2	J	410	C14	C02-C03-C04-C05
2	J	406	C14	C04-C05-C06-C07
2	A	403	C14	C04-C05-C06-C07
2	C	406	C14	C04-C05-C06-C07
2	F	407	C14	C04-C05-C06-C07
2	I	406	C14	C04-C05-C06-C07
2	B	406	C14	C04-C05-C06-C07
2	D	406	C14	C04-C05-C06-C07
2	G	403	C14	C04-C05-C06-C07
2	H	406	C14	C04-C05-C06-C07
2	K	406	C14	C04-C05-C06-C07
2	L	407	C14	C04-C05-C06-C07
2	E	406	C14	C04-C05-C06-C07
2	H	401	C14	C03-C04-C05-C06
2	K	401	C14	C03-C04-C05-C06
2	A	408	C14	C03-C04-C05-C06
2	C	401	C14	C03-C04-C05-C06
2	F	402	C14	C03-C04-C05-C06
2	I	401	C14	C03-C04-C05-C06
2	B	401	C14	C03-C04-C05-C06
2	D	401	C14	C03-C04-C05-C06
2	E	401	C14	C03-C04-C05-C06

Continued on next page...

Continued from previous page...

Mol	Chain	Res	Type	Atoms
2	J	401	C14	C03-C04-C05-C06
2	L	402	C14	C03-C04-C05-C06
2	G	408	C14	C03-C04-C05-C06
2	A	402	C14	C03-C04-C05-C06
2	B	405	C14	C03-C04-C05-C06
2	G	402	C14	C03-C04-C05-C06
2	H	405	C14	C03-C04-C05-C06
2	L	406	C14	C03-C04-C05-C06
2	D	405	C14	C03-C04-C05-C06
2	C	405	C14	C03-C04-C05-C06
2	E	405	C14	C03-C04-C05-C06
2	I	405	C14	C03-C04-C05-C06
2	J	405	C14	C03-C04-C05-C06
2	K	405	C14	C03-C04-C05-C06
2	F	406	C14	C03-C04-C05-C06
2	B	404	C14	C02-C03-C04-C05
2	D	404	C14	C02-C03-C04-C05
2	E	404	C14	C02-C03-C04-C05
2	C	404	C14	C02-C03-C04-C05
2	I	404	C14	C02-C03-C04-C05
2	K	404	C14	C02-C03-C04-C05
2	H	404	C14	C02-C03-C04-C05
2	J	404	C14	C02-C03-C04-C05
2	L	405	C14	C02-C03-C04-C05
2	F	405	C14	C02-C03-C04-C05
2	A	401	C14	C02-C03-C04-C05
2	G	401	C14	C02-C03-C04-C05
2	J	407	C14	C09-C10-C11-C12
2	C	407	C14	C09-C10-C11-C12
2	D	407	C14	C09-C10-C11-C12
2	F	408	C14	C09-C10-C11-C12
2	G	404	C14	C09-C10-C11-C12
2	H	407	C14	C09-C10-C11-C12
2	K	407	C14	C09-C10-C11-C12
2	L	408	C14	C09-C10-C11-C12
2	A	404	C14	C09-C10-C11-C12
2	B	407	C14	C09-C10-C11-C12
2	E	407	C14	C09-C10-C11-C12
2	I	407	C14	C09-C10-C11-C12
2	F	408	C14	C03-C04-C05-C06
2	H	407	C14	C03-C04-C05-C06
2	C	407	C14	C03-C04-C05-C06

Continued on next page...

Continued from previous page...

Mol	Chain	Res	Type	Atoms
2	I	407	C14	C03-C04-C05-C06
2	J	407	C14	C03-C04-C05-C06
2	L	408	C14	C03-C04-C05-C06
2	A	404	C14	C03-C04-C05-C06
2	B	407	C14	C03-C04-C05-C06
2	E	407	C14	C03-C04-C05-C06
2	K	407	C14	C03-C04-C05-C06
2	D	407	C14	C03-C04-C05-C06
2	G	404	C14	C03-C04-C05-C06
2	K	409	C14	C05-C06-C07-C08
2	A	407	C14	C05-C06-C07-C08
2	D	411	C14	C05-C06-C07-C08
2	L	401	C14	C05-C06-C07-C08
2	E	409	C14	C05-C06-C07-C08
2	B	410	C14	C05-C06-C07-C08
2	F	401	C14	C05-C06-C07-C08
2	G	407	C14	C05-C06-C07-C08
2	I	410	C14	C05-C06-C07-C08
2	C	410	C14	C05-C06-C07-C08
2	H	410	C14	C05-C06-C07-C08
2	J	411	C14	C05-C06-C07-C08
2	A	410	C14	C04-C05-C06-C07
2	I	403	C14	C04-C05-C06-C07
2	B	403	C14	C04-C05-C06-C07
2	D	403	C14	C04-C05-C06-C07
2	E	403	C14	C04-C05-C06-C07
2	F	404	C14	C04-C05-C06-C07
2	G	410	C14	C04-C05-C06-C07
2	J	403	C14	C04-C05-C06-C07
2	C	403	C14	C04-C05-C06-C07
2	H	403	C14	C04-C05-C06-C07
2	K	403	C14	C04-C05-C06-C07
2	L	404	C14	C04-C05-C06-C07

There are no ring outliers.

33 monomers are involved in 21 short contacts:

Mol	Chain	Res	Type	Clashes	Symm-Clashes
2	B	409	C14	1	0
2	K	409	C14	1	0
2	G	405	C14	1	0
2	F	401	C14	1	0

Continued on next page...

Continued from previous page...

Mol	Chain	Res	Type	Clashes	Symm-Clashes
2	A	406	C14	1	0
2	I	408	C14	1	0
2	C	403	C14	1	0
2	D	411	C14	1	0
2	J	410	C14	1	0
2	E	409	C14	1	0
2	A	407	C14	1	0
2	J	409	C14	1	0
2	D	409	C14	1	0
2	C	408	C14	1	0
2	G	402	C14	1	0
2	L	410	C14	1	0
2	I	410	C14	1	0
2	L	401	C14	1	0
2	H	410	C14	1	0
2	H	409	C14	1	0
2	D	405	C14	1	0
2	G	406	C14	1	0
2	L	409	C14	1	0
2	I	409	C14	1	0
2	C	410	C14	1	0
2	F	410	C14	1	0
2	B	410	C14	1	0
2	F	406	C14	1	0
2	J	411	C14	1	0
2	C	409	C14	1	0
2	D	410	C14	1	0
2	G	407	C14	1	0
2	K	405	C14	1	0

5.7 Other polymers [i](#)

There are no such residues in this entry.

5.8 Polymer linkage issues [i](#)

There are no chain breaks in this entry.

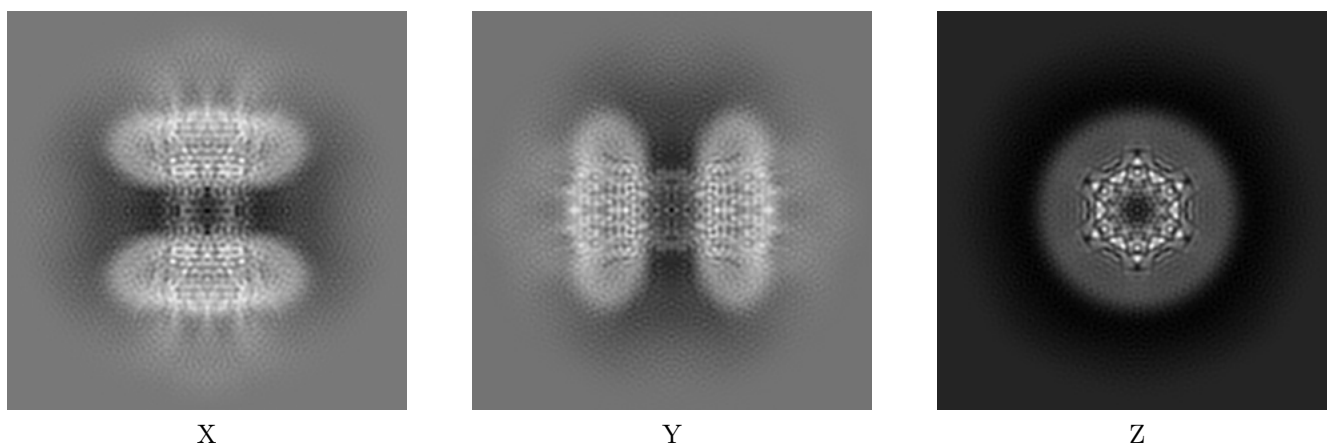
6 Map visualisation [i](#)

This section contains visualisations of the EMDB entry EMD-31496. These allow visual inspection of the internal detail of the map and identification of artifacts.

No raw map or half-maps were deposited for this entry and therefore no images, graphs, etc. pertaining to the raw map can be shown.

6.1 Orthogonal projections [i](#)

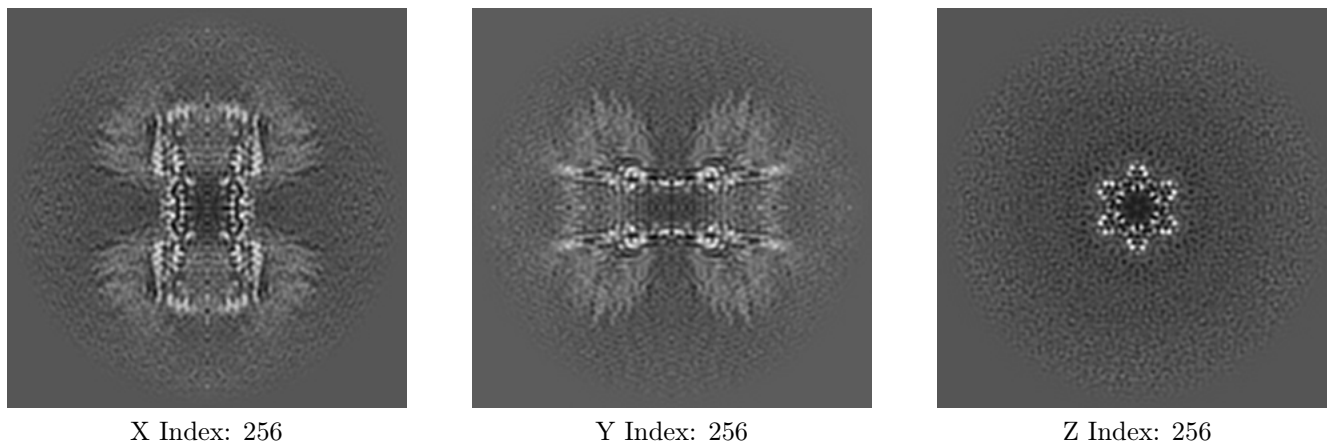
6.1.1 Primary map



The images above show the map projected in three orthogonal directions.

6.2 Central slices [i](#)

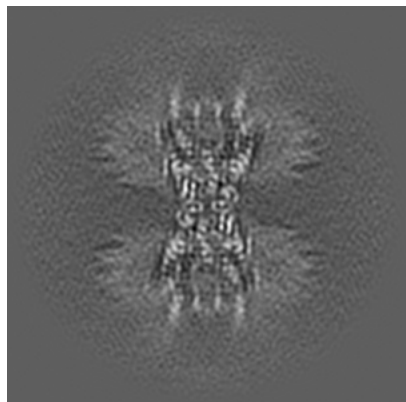
6.2.1 Primary map



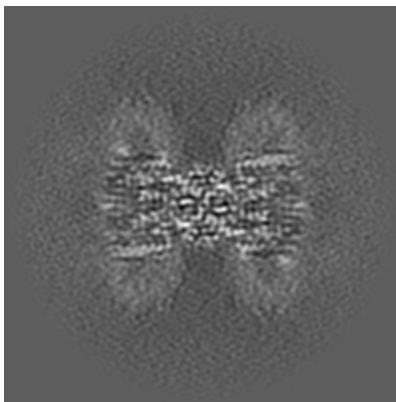
The images above show central slices of the map in three orthogonal directions.

6.3 Largest variance slices [\(i\)](#)

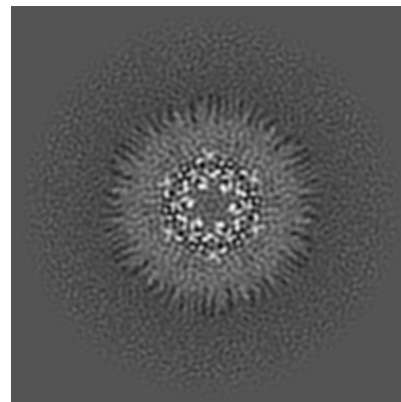
6.3.1 Primary map



X Index: 232



Y Index: 284

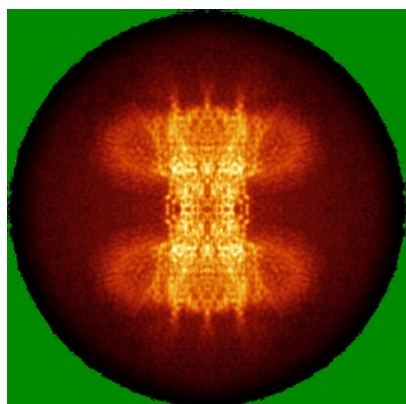


Z Index: 304

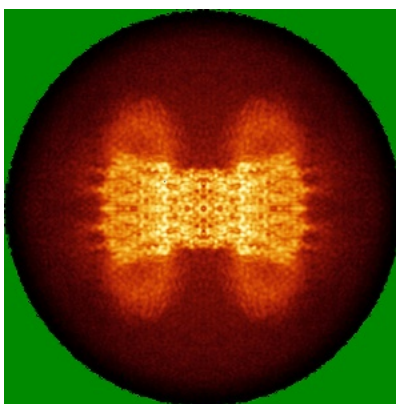
The images above show the largest variance slices of the map in three orthogonal directions.

6.4 Orthogonal standard-deviation projections (False-color) [\(i\)](#)

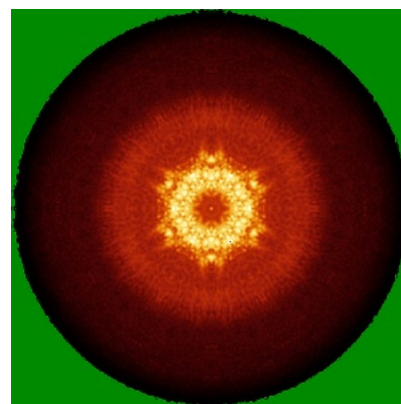
6.4.1 Primary map



X



Y

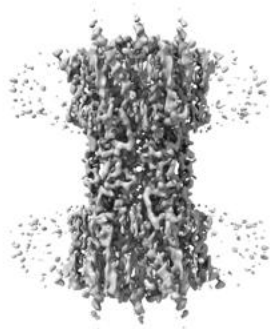


Z

The images above show the map standard deviation projections with false color in three orthogonal directions. Minimum values are shown in green, max in blue, and dark to light orange shades represent small to large values respectively.

6.5 Orthogonal surface views [i](#)

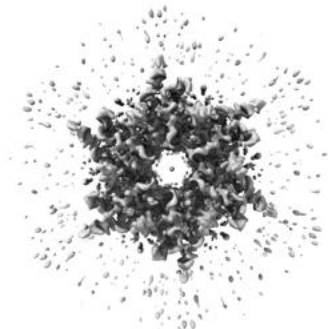
6.5.1 Primary map



X



Y



Z

The images above show the 3D surface view of the map at the recommended contour level 0.28. These images, in conjunction with the slice images, may facilitate assessment of whether an appropriate contour level has been provided.

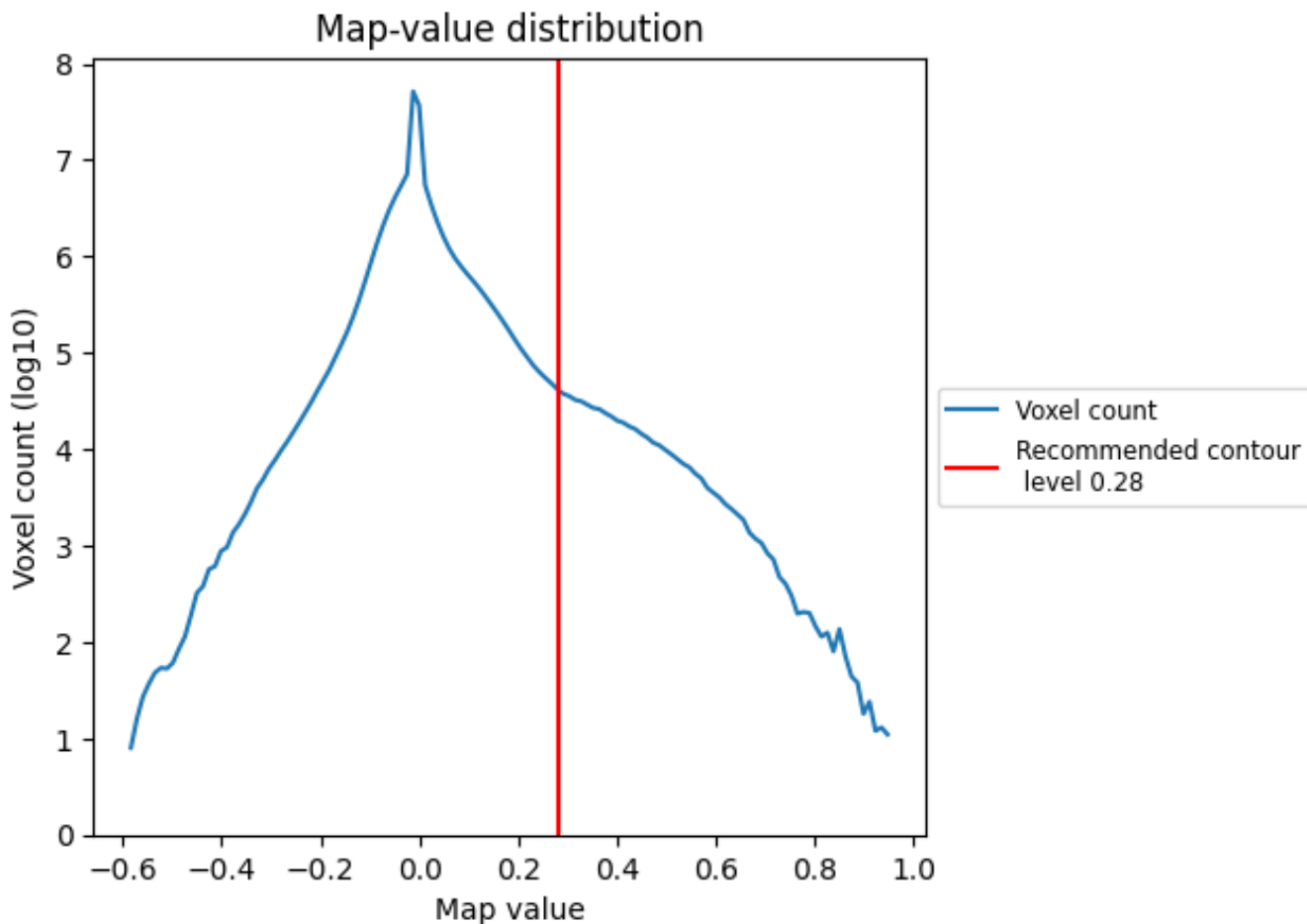
6.6 Mask visualisation [i](#)

This section was not generated. No masks/segmentation were deposited.

7 Map analysis [i](#)

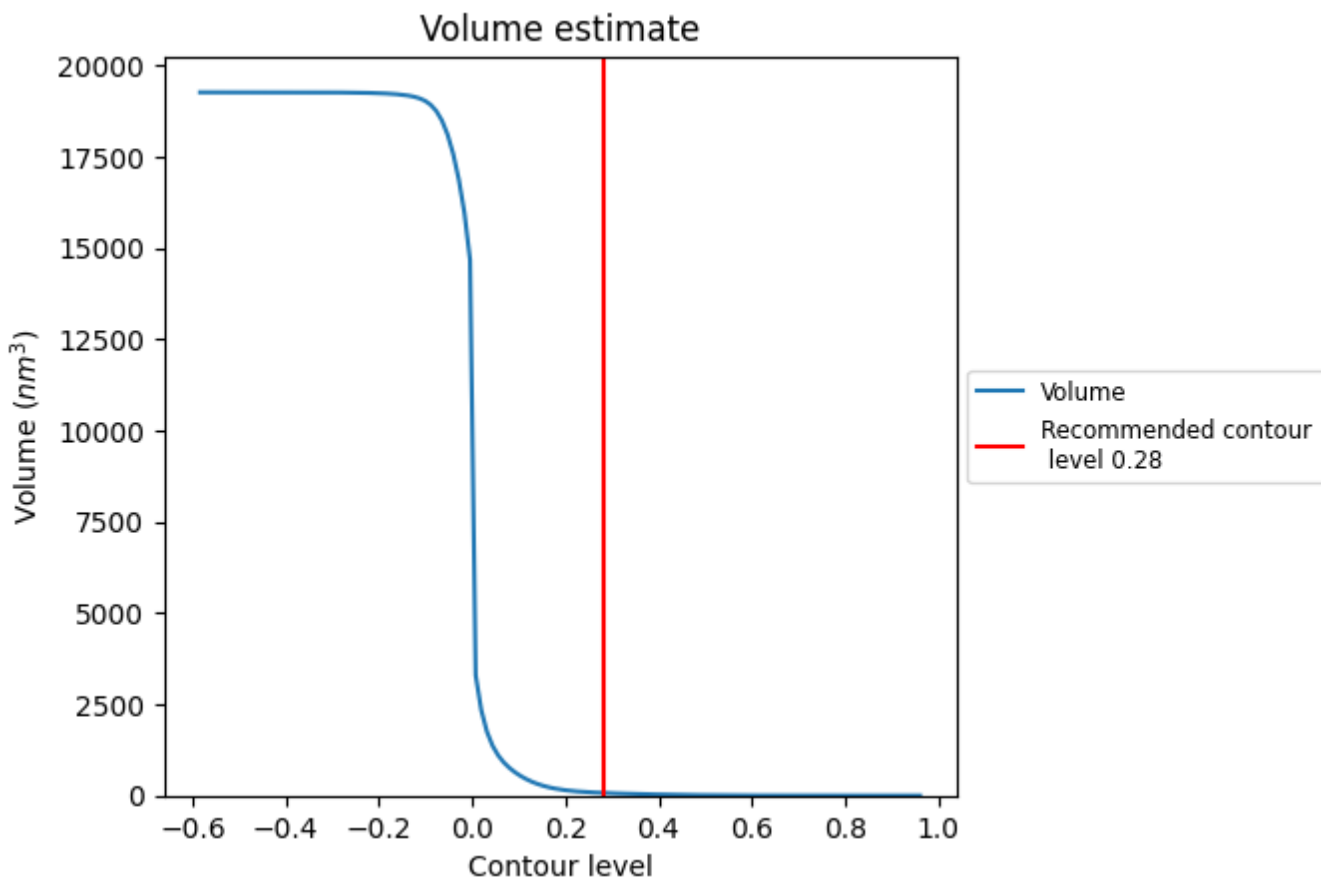
This section contains the results of statistical analysis of the map.

7.1 Map-value distribution [i](#)



The map-value distribution is plotted in 128 intervals along the x-axis. The y-axis is logarithmic. A spike in this graph at zero usually indicates that the volume has been masked.

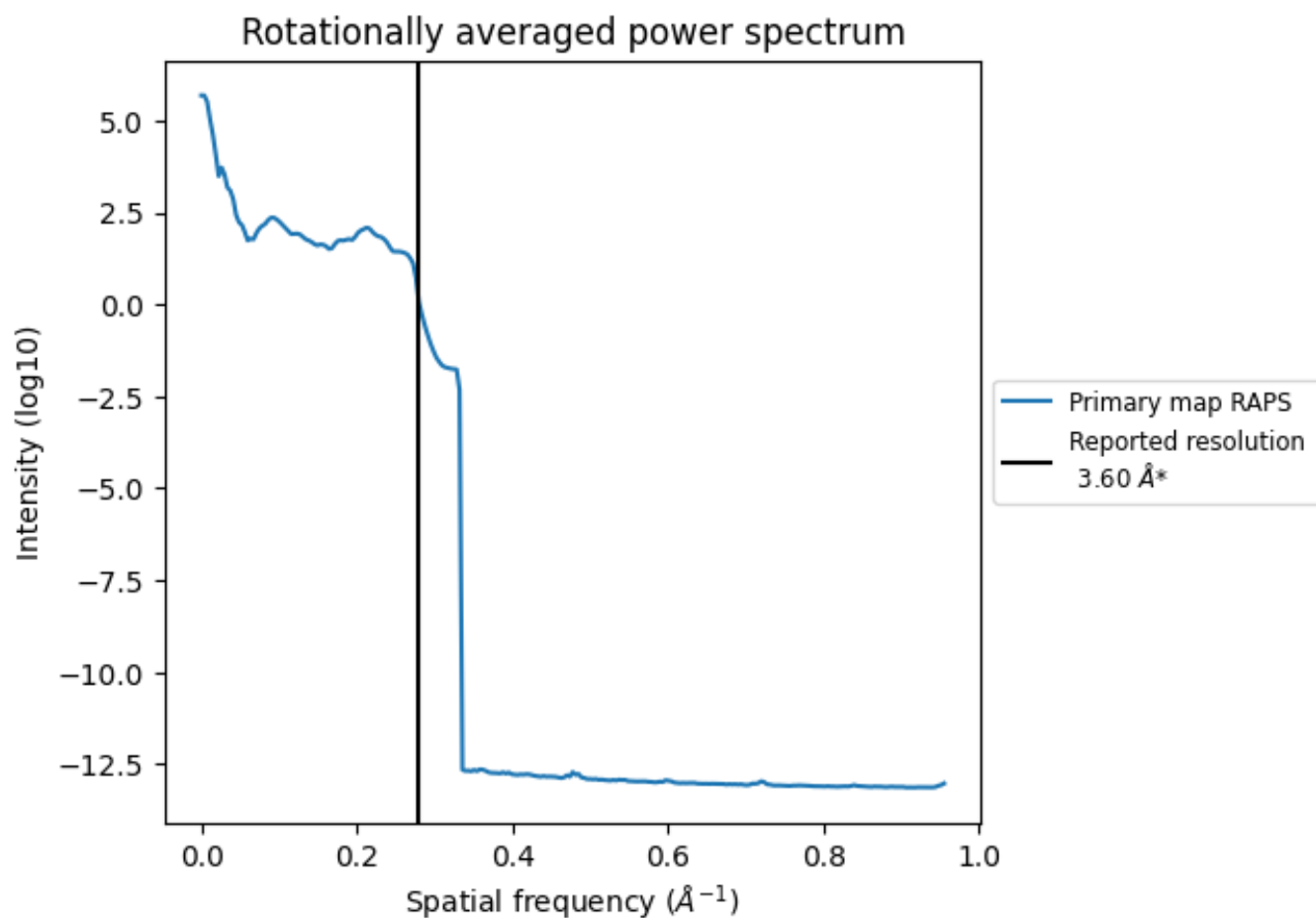
7.2 Volume estimate [i](#)



The volume at the recommended contour level is 73 nm³; this corresponds to an approximate mass of 66 kDa.

The volume estimate graph shows how the enclosed volume varies with the contour level. The recommended contour level is shown as a vertical line and the intersection between the line and the curve gives the volume of the enclosed surface at the given level.

7.3 Rotationally averaged power spectrum [\(i\)](#)



*Reported resolution corresponds to spatial frequency of 0.278 Å⁻¹

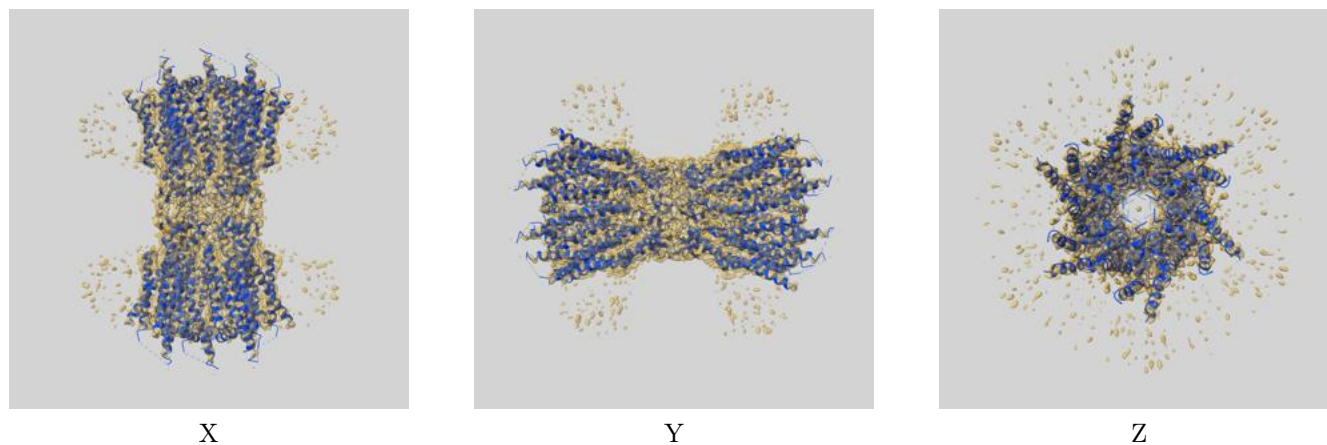
8 Fourier-Shell correlation

This section was not generated. No FSC curve or half-maps provided.

9 Map-model fit [i](#)

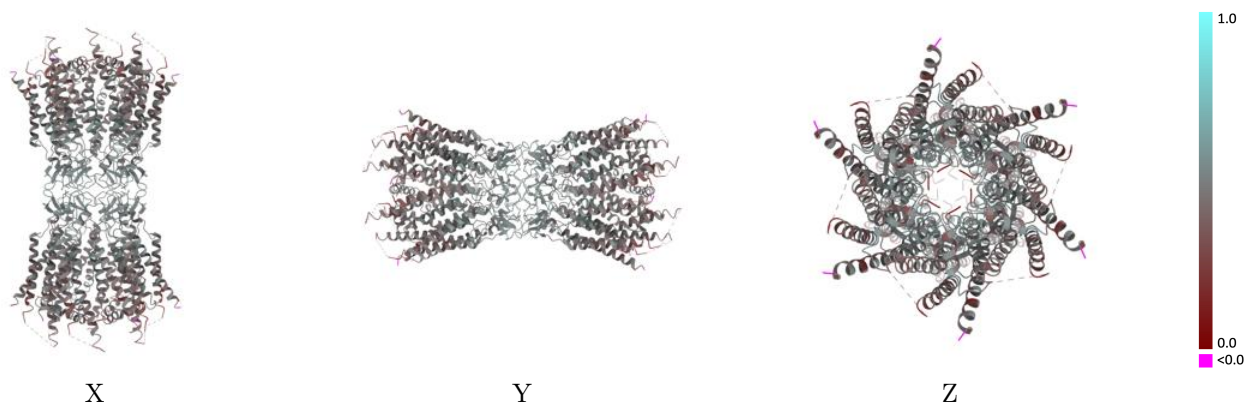
This section contains information regarding the fit between EMDB map EMD-31496 and PDB model 7F93. Per-residue inclusion information can be found in section 3 on page 12.

9.1 Map-model overlay [i](#)



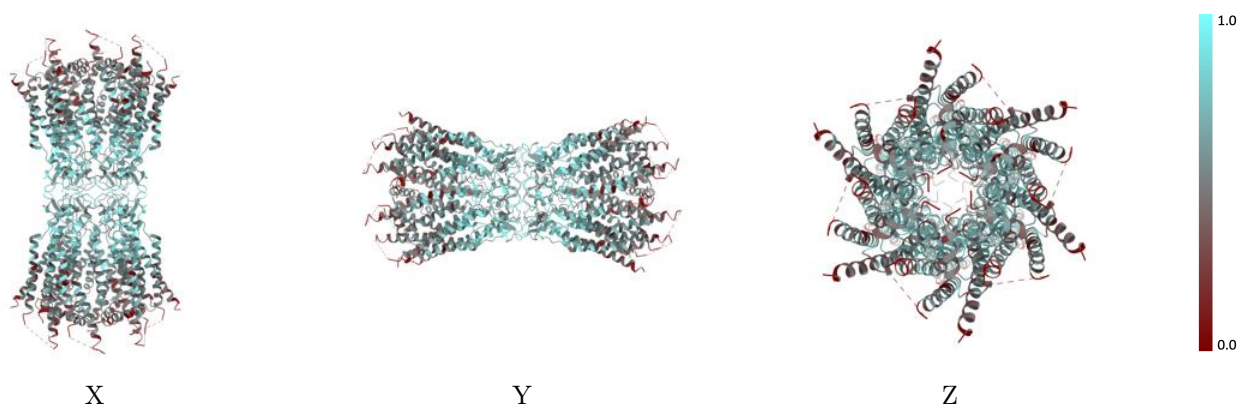
The images above show the 3D surface view of the map at the recommended contour level 0.28 at 50% transparency in yellow overlaid with a ribbon representation of the model coloured in blue. These images allow for the visual assessment of the quality of fit between the atomic model and the map.

9.2 Q-score mapped to coordinate model [i](#)



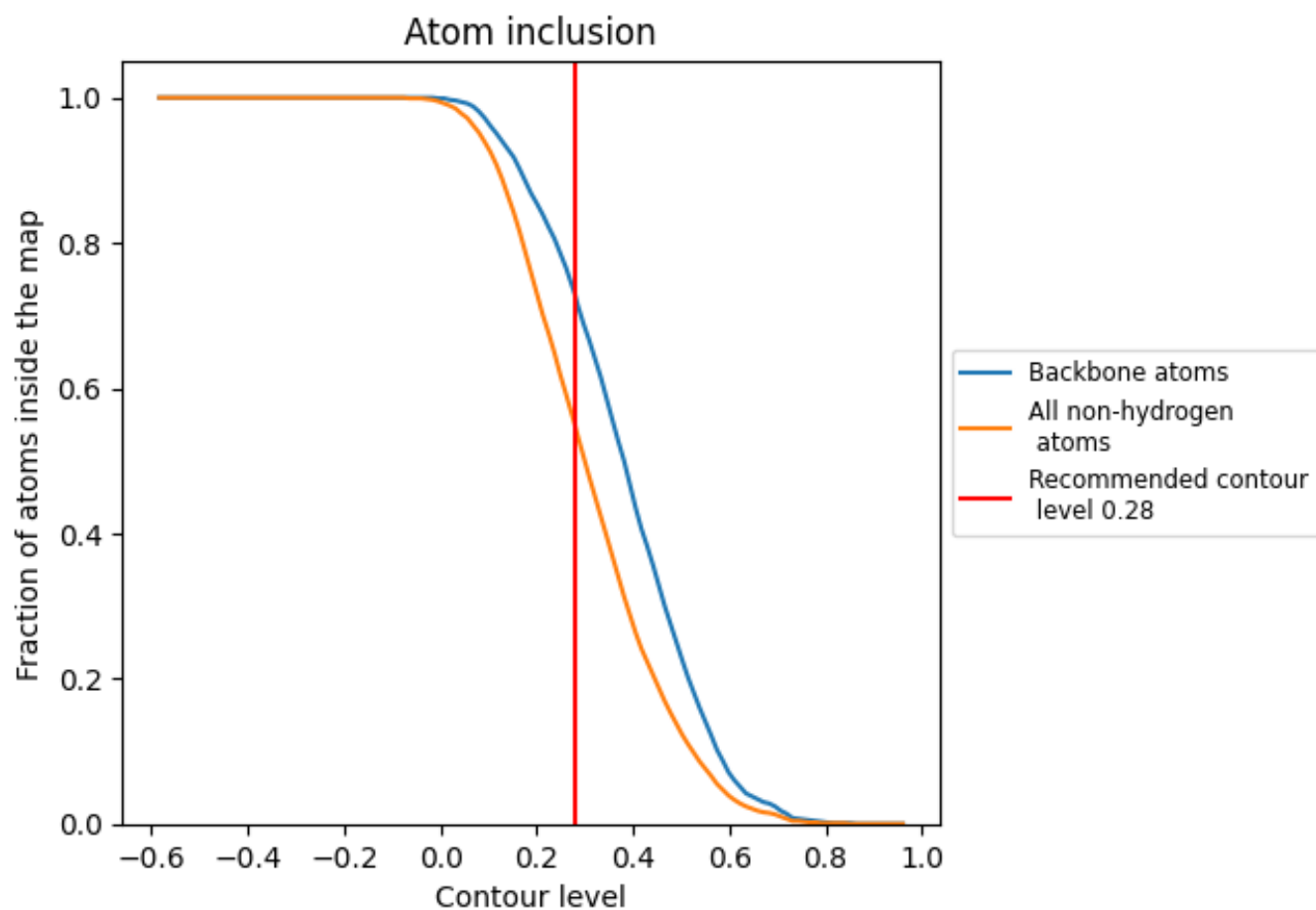
The images above show the model with each residue coloured according to its Q-score. This shows their resolvability in the map with higher Q-score values reflecting better resolvability. Please note: Q-score is calculating the resolvability of atoms, and thus high values are only expected at resolutions at which atoms can be resolved. Low Q-score values may therefore be expected for many entries.

9.3 Atom inclusion mapped to coordinate model [i](#)



The images above show the model with each residue coloured according to its atom inclusion. This shows to what extent they are inside the map at the recommended contour level (0.28).

9.4 Atom inclusion [i](#)



At the recommended contour level, 73% of all backbone atoms, 55% of all non-hydrogen atoms, are inside the map.

9.5 Map-model fit summary [i](#)

The table lists the average atom inclusion at the recommended contour level (0.28) and Q-score for the entire model and for each chain.

Chain	Atom inclusion	Q-score
All	0.5480	0.4730
A	0.5520	0.4740
B	0.5470	0.4760
C	0.5470	0.4720
D	0.5440	0.4740
E	0.5480	0.4660
F	0.5460	0.4710
G	0.5450	0.4720
H	0.5510	0.4750
I	0.5500	0.4720
J	0.5480	0.4710
K	0.5470	0.4740
L	0.5450	0.4740

