



Full wwPDB X-ray Structure Validation Report ⓘ

Sep 9, 2025 – 02:19 AM JST

PDB ID : 7VS4 / pdb_00007vs4
Title : Crystal structure of PacII_M1M2S-DNA(m6A)-SAH complex
Authors : Zhu, J.; Gao, P.
Deposited on : 2021-10-25
Resolution : 2.55 Å(reported)

This is a Full wwPDB X-ray Structure Validation Report for a publicly released PDB entry.

We welcome your comments at validation@mail.wwpdb.org

A user guide is available at

<https://www.wwpdb.org/validation/2017/XrayValidationReportHelp>

with specific help available everywhere you see the ⓘ symbol.

The types of validation reports are described at

<http://www.wwpdb.org/validation/2017/FAQs#types>.

The following versions of software and data (see [references ⓘ](#)) were used in the production of this report:

MolProbity : 4-5-2 with Phenix2.0rc1
Mogul : 1.8.5 (274361), CSD as541be (2020)
Xtriage (Phenix) : 2.0rc1
EDS : 3.0
buster-report : 1.1.7 (2018)
Percentile statistics : 20231227.v01 (using entries in the PDB archive December 27th 2023)
CCP4 : 9.0.006 (Gargrove)
Density-Fitness : 1.0.12
Ideal geometry (proteins) : Engh & Huber (2001)
Ideal geometry (DNA, RNA) : Parkinson et al. (1996)
Validation Pipeline (wwPDB-VP) : 2.45.1

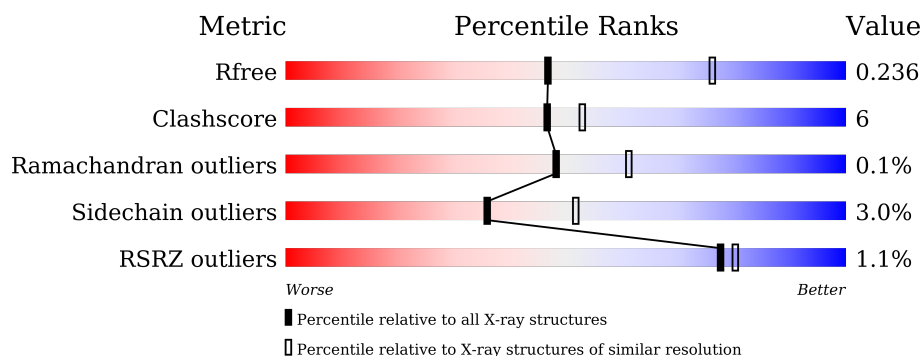
1 Overall quality at a glance

The following experimental techniques were used to determine the structure:

X-RAY DIFFRACTION

The reported resolution of this entry is 2.55 Å.

Percentile scores (ranging between 0-100) for global validation metrics of the entry are shown in the following graphic. The table shows the number of entries on which the scores are based.



Metric	Whole archive (#Entries)	Similar resolution (#Entries, resolution range(Å))
R_{free}	164625	1004 (2.54-2.54)
Clashscore	180529	1055 (2.54-2.54)
Ramachandran outliers	177936	1048 (2.54-2.54)
Sidechain outliers	177891	1048 (2.54-2.54)
RSRZ outliers	164620	1004 (2.54-2.54)

The table below summarises the geometric issues observed across the polymeric chains and their fit to the electron density. The red, orange, yellow and green segments of the lower bar indicate the fraction of residues that contain outliers for ≥ 3 , 2, 1 and 0 types of geometric quality criteria respectively. A grey segment represents the fraction of residues that are not modelled. The numeric value for each fraction is indicated below the corresponding segment, with a dot representing fractions $\leq 5\%$. The upper red bar (where present) indicates the fraction of residues that have poor fit to the electron density. The numeric value is given above the bar.

Mol	Chain	Length	Quality of chain
1	A	499	<div> <div style="width: 100%; height: 10px; background-color: red;"></div> <div style="width: 85%; height: 10px; background-color: green;"></div> <div style="width: 13%; height: 10px; background-color: yellow;"></div> <div style="width: 2%; height: 10px; background-color: orange;"></div> <div style="width: 2%; height: 10px; background-color: grey;"></div> </div>
2	B	504	<div> <div style="width: 100%; height: 10px; background-color: red;"></div> <div style="width: 85%; height: 10px; background-color: green;"></div> <div style="width: 12%; height: 10px; background-color: yellow;"></div> <div style="width: 3%; height: 10px; background-color: orange;"></div> <div style="width: 2%; height: 10px; background-color: grey;"></div> </div>
3	C	383	<div> <div style="width: 100%; height: 10px; background-color: red;"></div> <div style="width: 79%; height: 10px; background-color: green;"></div> <div style="width: 17%; height: 10px; background-color: yellow;"></div> <div style="width: 4%; height: 10px; background-color: orange;"></div> <div style="width: 2%; height: 10px; background-color: grey;"></div> </div>
4	H	25	<div> <div style="width: 64%; height: 10px; background-color: green;"></div> <div style="width: 36%; height: 10px; background-color: yellow;"></div> </div>
5	I	25	<div> <div style="width: 64%; height: 10px; background-color: green;"></div> <div style="width: 36%; height: 10px; background-color: yellow;"></div> </div>

2 Entry composition

There are 7 unique types of molecules in this entry. The entry contains 12286 atoms, of which 0 are hydrogens and 0 are deuteriums.

In the tables below, the ZeroOcc column contains the number of atoms modelled with zero occupancy, the AltConf column contains the number of residues with at least one atom in alternate conformation and the Trace column contains the number of residues modelled with at most 2 atoms.

- Molecule 1 is a protein called Site-specific DNA-methyltransferase (adenine-specific).

Mol	Chain	Residues	Atoms					ZeroOcc	AltConf	Trace
1	A	495	Total	C	N	O	S	0	0	0
			3909	2489	681	727	12			

- Molecule 2 is a protein called Site-specific DNA-methyltransferase (adenine-specific).

Mol	Chain	Residues	Atoms					ZeroOcc	AltConf	Trace
2	B	494	Total	C	N	O	S	0	0	0
			3954	2525	682	734	13			

- Molecule 3 is a protein called Site-specific DNA recognition subunit.

Mol	Chain	Residues	Atoms					ZeroOcc	AltConf	Trace
3	C	374	Total	C	N	O	S	0	0	0
			2926	1873	498	545	10			

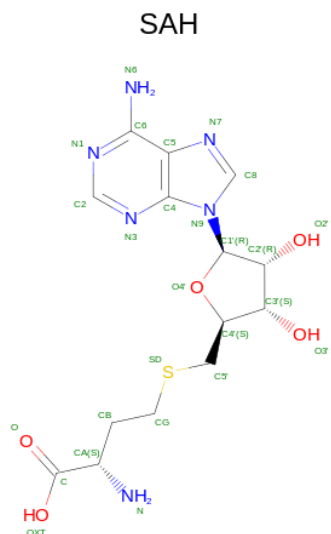
- Molecule 4 is a DNA chain called DNA (25-mer).

Mol	Chain	Residues	Atoms					ZeroOcc	AltConf	Trace
4	H	25	Total	C	N	O	P	0	0	0
			509	242	97	145	25			

- Molecule 5 is a DNA chain called DNA (25-mer).

Mol	Chain	Residues	Atoms					ZeroOcc	AltConf	Trace
5	I	25	Total	C	N	O	P	0	0	0
			517	247	90	155	25			

- Molecule 6 is S-ADENOSYL-L-HOMOCYSTEINE (CCD ID: SAH) (formula: C₁₄H₂₀N₆O₅S) (labeled as "Ligand of Interest" by depositor).



Mol	Chain	Residues	Atoms					ZeroOcc	AltConf
6	A	1	Total 26	C 14	N 6	O 5	S 1	0	0
6	B	1	Total 26	C 14	N 6	O 5	S 1	0	0

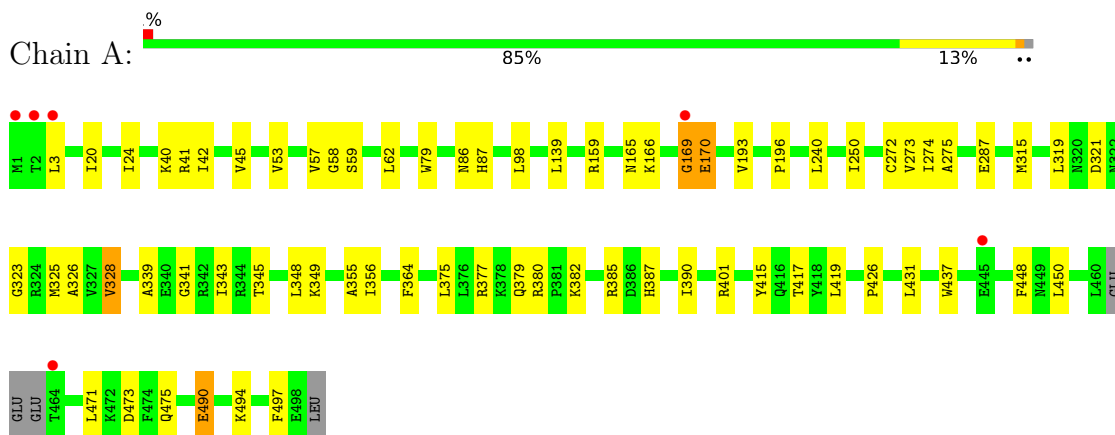
- Molecule 7 is water.

Mol	Chain	Residues	Atoms		ZeroOcc	AltConf
7	A	102	Total 102	O 102	0	0
7	B	162	Total 162	O 162	0	0
7	C	96	Total 96	O 96	0	0
7	H	33	Total 33	O 33	0	0
7	I	26	Total 26	O 26	0	0

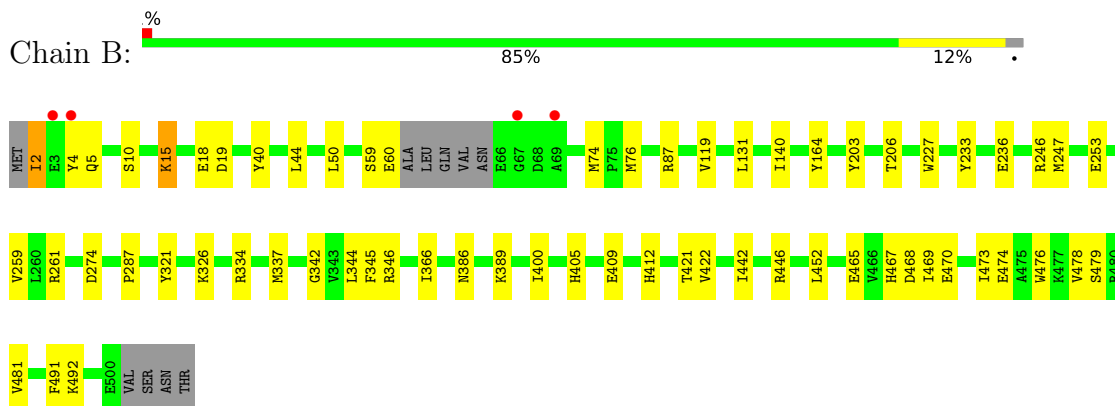
3 Residue-property plots [i](#)

These plots are drawn for all protein, RNA, DNA and oligosaccharide chains in the entry. The first graphic for a chain summarises the proportions of the various outlier classes displayed in the second graphic. The second graphic shows the sequence view annotated by issues in geometry and electron density. Residues are color-coded according to the number of geometric quality criteria for which they contain at least one outlier: green = 0, yellow = 1, orange = 2 and red = 3 or more. A red dot above a residue indicates a poor fit to the electron density ($RSRZ > 2$). Stretches of 2 or more consecutive residues without any outlier are shown as a green connector. Residues present in the sample, but not in the model, are shown in grey.

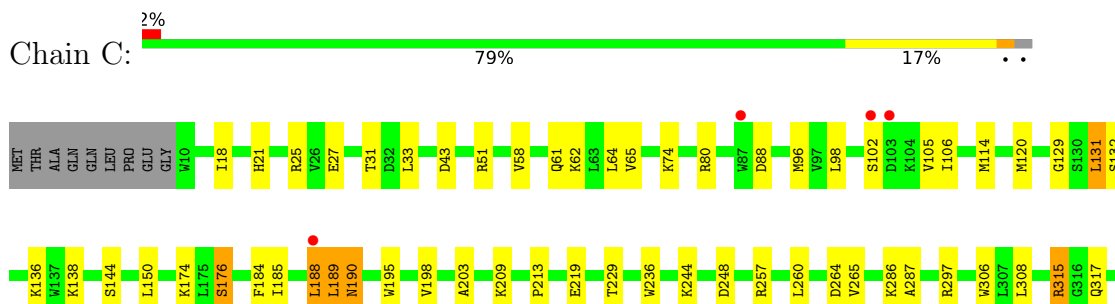
- Molecule 1: Site-specific DNA-methyltransferase (adenine-specific)

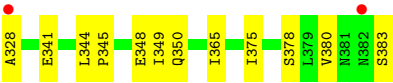


- Molecule 2: Site-specific DNA-methyltransferase (adenine-specific)

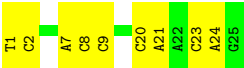


- Molecule 3: Site-specific DNA recognition subunit

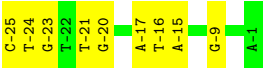




● Molecule 4: DNA (25-mer)



● Molecule 5: DNA (25-mer)



4 Data and refinement statistics

Property	Value	Source
Space group	P 21 21 21	Depositor
Cell constants a, b, c, α , β , γ	109.09Å 121.67Å 129.75Å 90.00° 90.00° 90.00°	Depositor
Resolution (Å)	49.17 – 2.55 49.17 – 2.55	Depositor EDS
% Data completeness (in resolution range)	98.3 (49.17-2.55) 98.9 (49.17-2.55)	Depositor EDS
R_{merge}	0.02	Depositor
R_{sym}	(Not available)	Depositor
$\langle I/\sigma(I) \rangle$ ¹	2.09 (at 2.48Å)	Xtrriage
Refinement program	PHENIX 1.20.1_4487, PHENIX 1.20.1_4487	Depositor
R, R_{free}	0.181 , 0.237 0.182 , 0.236	Depositor DCC
R_{free} test set	2967 reflections (4.76%)	wwPDB-VP
Wilson B-factor (Å ²)	36.1	Xtrriage
Anisotropy	0.038	Xtrriage
Bulk solvent k_{sol} (e/Å ³), B_{sol} (Å ²)	0.32 , 39.8	EDS
L-test for twinning ²	$\langle L \rangle = 0.49$, $\langle L^2 \rangle = 0.33$	Xtrriage
Estimated twinning fraction	No twinning to report.	Xtrriage
F_o, F_c correlation	0.94	EDS
Total number of atoms	12286	wwPDB-VP
Average B, all atoms (Å ²)	40.0	wwPDB-VP

Xtrriage's analysis on translational NCS is as follows: *The largest off-origin peak in the Patterson function is 2.99% of the height of the origin peak. No significant pseudotranslation is detected.*

¹Intensities estimated from amplitudes.

²Theoretical values of $\langle |L| \rangle$, $\langle L^2 \rangle$ for acentric reflections are 0.5, 0.333 respectively for untwinned datasets, and 0.375, 0.2 for perfectly twinned datasets.

5 Model quality [i](#)

5.1 Standard geometry [i](#)

Bond lengths and bond angles in the following residue types are not validated in this section: 6MA, SAH

The Z score for a bond length (or angle) is the number of standard deviations the observed value is removed from the expected value. A bond length (or angle) with $|Z| > 5$ is considered an outlier worth inspection. RMSZ is the root-mean-square of all Z scores of the bond lengths (or angles).

Mol	Chain	Bond lengths		Bond angles	
		RMSZ	$\# Z > 5$	RMSZ	$\# Z > 5$
1	A	0.34	0/3996	0.51	1/5418 (0.0%)
2	B	0.39	0/4045	0.53	0/5471
3	C	0.34	0/2987	0.52	0/4041
4	H	0.45	0/571	0.64	0/877
5	I	0.46	0/552	0.69	0/849
All	All	0.37	0/12151	0.54	1/16656 (0.0%)

There are no bond length outliers.

All (1) bond angle outliers are listed below:

Mol	Chain	Res	Type	Atoms	Z	Observed($^{\circ}$)	Ideal($^{\circ}$)
1	A	169	GLY	N-CA-C	-6.71	104.23	111.21

There are no chirality outliers.

There are no planarity outliers.

5.2 Too-close contacts [i](#)

In the following table, the Non-H and H(model) columns list the number of non-hydrogen atoms and hydrogen atoms in the chain respectively. The H(added) column lists the number of hydrogen atoms added and optimized by MolProbity. The Clashes column lists the number of clashes within the asymmetric unit, whereas Symm-Clashes lists symmetry-related clashes.

Mol	Chain	Non-H	H(model)	H(added)	Clashes	Symm-Clashes
1	A	3909	0	3797	44	0
2	B	3954	0	3874	39	0
3	C	2926	0	2947	41	0
4	H	509	0	280	6	0
5	I	517	0	287	7	0

Continued on next page...

Continued from previous page...

Mol	Chain	Non-H	H(model)	H(added)	Clashes	Symm-Clashes
6	A	26	0	19	1	0
6	B	26	0	17	3	0
7	A	102	0	0	1	0
7	B	162	0	0	2	0
7	C	96	0	0	0	0
7	H	33	0	0	0	0
7	I	26	0	0	0	0
All	All	12286	0	11221	128	0

The all-atom clashscore is defined as the number of clashes found per 1000 atoms (including hydrogen atoms). The all-atom clashscore for this structure is 6.

All (128) close contacts within the same asymmetric unit are listed below, sorted by their clash magnitude.

Atom-1	Atom-2	Interatomic distance (Å)	Clash overlap (Å)
1:A:196:PRO:HD2	1:A:275:ALA:HB2	1.62	0.80
3:C:31:THR:OG1	3:C:33:LEU:HD12	1.87	0.74
3:C:106:ILE:HG13	3:C:150:LEU:HD22	1.73	0.71
1:A:59:SER:HB3	1:A:62:LEU:HB3	1.76	0.67
2:B:2:ILE:N	7:B:701:HOH:O	2.29	0.65
1:A:170:GLU:O	6:A:501:SAH:H3'	1.97	0.65
1:A:319:LEU:HD21	1:A:325:MET:HB3	1.78	0.64
1:A:490:GLU:O	1:A:494:LYS:HG3	1.98	0.63
3:C:229:THR:OG1	3:C:244:LYS:NZ	2.32	0.62
3:C:195:TRP:CE2	3:C:345:PRO:HB3	2.35	0.61
1:A:380:ARG:NH2	1:A:387:HIS:O	2.32	0.60
3:C:315:ARG:NH2	3:C:341:GLU:O	2.29	0.60
3:C:174:LYS:HB2	3:C:365:ILE:HG21	1.84	0.60
1:A:473:ASP:OD2	3:C:176:SER:HB2	2.02	0.59
2:B:344:LEU:HB3	2:B:452:LEU:HB2	1.85	0.58
2:B:321:TYR:CZ	2:B:337:MET:HE1	2.38	0.58
2:B:467:HIS:O	3:C:378:SER:OG	2.20	0.57
4:H:20:DC:H2''	4:H:21:DA:C8	2.40	0.57
1:A:193:VAL:HG22	1:A:272:CYS:HB2	1.86	0.57
1:A:57:VAL:HG23	1:A:59:SER:H	1.71	0.56
1:A:349:LYS:NZ	7:A:604:HOH:O	2.39	0.54
2:B:342:GLY:HA2	2:B:345:PHE:CE2	2.43	0.54
3:C:136:LYS:HD2	3:C:138:LYS:HE2	1.89	0.54
5:I:-24:DT:H2''	5:I:-23:DG:C8	2.43	0.54
1:A:53:VAL:O	1:A:57:VAL:HG22	2.07	0.53
3:C:345:PRO:HD2	3:C:350:GLN:HE21	1.73	0.53

Continued on next page...

Continued from previous page...

Atom-1	Atom-2	Interatomic distance (Å)	Clash overlap (Å)
1:A:40:LYS:HD3	1:A:79:TRP:CD2	2.44	0.52
3:C:43:ASP:OD1	3:C:51:ARG:NH2	2.36	0.51
3:C:328:ALA:HB1	5:I:-16:DT:C6	2.45	0.51
3:C:74:LYS:HD3	3:C:96:MET:HG3	1.92	0.51
3:C:80:ARG:HG2	3:C:120:MET:HG3	1.92	0.51
3:C:209:LYS:O	3:C:257:ARG:NH1	2.45	0.50
2:B:469:ILE:HG13	2:B:473:ILE:HD11	1.94	0.50
3:C:114:MET:O	3:C:120:MET:HE2	2.12	0.50
2:B:246:ARG:HG3	2:B:259:VAL:HB	1.94	0.50
3:C:344:LEU:HD12	3:C:350:GLN:HE22	1.77	0.49
2:B:366:ILE:HG12	2:B:400:ILE:HD12	1.94	0.49
2:B:203:TYR:HA	2:B:233:TYR:O	2.12	0.49
1:A:345:THR:HG22	1:A:448:PHE:CB	2.42	0.49
2:B:476:TRP:O	2:B:479:SER:OG	2.26	0.49
1:A:426:PRO:HA	1:A:437:TRP:CG	2.48	0.48
3:C:27:GLU:OE2	3:C:61:GLN:NE2	2.44	0.48
3:C:248:ASP:OD2	3:C:286:LYS:HE3	2.14	0.48
4:H:23:DC:H2"	4:H:24:DA:C8	2.48	0.48
2:B:386:ASN:HB3	2:B:389:LYS:HG2	1.96	0.48
2:B:409:GLU:HB3	2:B:412:HIS:O	2.13	0.48
2:B:18:GLU:HG2	2:B:164:TYR:CD1	2.49	0.47
3:C:129:GLY:HA3	3:C:132:SER:O	2.15	0.47
2:B:18:GLU:HG2	2:B:164:TYR:CE1	2.50	0.47
2:B:405:HIS:CD2	2:B:422:VAL:HG11	2.49	0.47
6:B:601:SAH:H4'	6:B:601:SAH:HG1	1.53	0.47
3:C:184:PHE:O	3:C:188:LEU:HB2	2.15	0.46
1:A:274:ILE:HA	1:A:326:ALA:O	2.16	0.46
1:A:159:ARG:HA	1:A:159:ARG:HD2	1.82	0.46
1:A:328:VAL:HG21	1:A:364:PHE:CZ	2.51	0.46
3:C:265:VAL:HG13	3:C:308:LEU:HD13	1.97	0.46
2:B:236:GLU:O	2:B:261:ARG:HA	2.17	0.45
3:C:190:ASN:N	3:C:190:ASN:OD1	2.50	0.45
1:A:287:GLU:H	1:A:287:GLU:CD	2.25	0.45
1:A:240:LEU:HD12	1:A:250:ILE:HD11	1.97	0.45
2:B:87:ARG:HA	2:B:87:ARG:HD2	1.65	0.45
2:B:469:ILE:O	2:B:473:ILE:HG13	2.17	0.45
1:A:356:ILE:HD11	1:A:390:ILE:HG12	1.99	0.45
3:C:260:LEU:HB2	3:C:287:ALA:HB3	1.99	0.45
5:I:-25:DC:H2"	5:I:-24:DT:H71	2.00	0.44
1:A:169:GLY:O	1:A:170:GLU:HB2	2.16	0.44
2:B:442:ILE:O	2:B:446:ARG:HG3	2.17	0.44

Continued on next page...

Continued from previous page...

Atom-1	Atom-2	Interatomic distance (Å)	Clash overlap (Å)
2:B:206:THR:O	6:B:601:SAH:HB2	2.17	0.44
1:A:20:ILE:HB	1:A:24:ILE:HD12	2.00	0.44
2:B:4:TYR:OH	3:C:219:GLU:HB2	2.17	0.44
4:H:1:DT:H2'	4:H:2:DC:C6	2.52	0.44
1:A:497:PHE:HE1	2:B:469:ILE:HG12	1.83	0.44
3:C:236:TRP:CZ3	3:C:308:LEU:HD23	2.53	0.44
1:A:401:ARG:NH2	5:I:-9:DG:N3	2.66	0.43
1:A:57:VAL:HG23	1:A:58:GLY:N	2.32	0.43
3:C:348:GLU:H	3:C:348:GLU:CD	2.26	0.43
3:C:98:LEU:HD12	3:C:114:MET:HE1	2.00	0.43
2:B:119:VAL:HG21	2:B:247:MET:CE	2.48	0.43
1:A:139:LEU:HD23	1:A:139:LEU:HA	1.83	0.43
4:H:9:DC:H2'	4:H:9:DC:O2	2.17	0.43
2:B:140:ILE:HD13	2:B:140:ILE:HA	1.84	0.43
3:C:58:VAL:HG21	3:C:62:LYS:HE2	2.01	0.43
1:A:321:ASP:O	1:A:379:GLN:HG2	2.19	0.43
3:C:184:PHE:C	3:C:184:PHE:CD1	2.97	0.43
2:B:287:PRO:HG3	6:B:601:SAH:C8	2.49	0.42
3:C:185:ILE:O	3:C:189:LEU:HB2	2.19	0.42
1:A:319:LEU:HB3	1:A:323:GLY:HA3	2.01	0.42
3:C:18:ILE:HB	3:C:105:VAL:HG21	2.01	0.42
1:A:382:LYS:HA	1:A:385:ARG:NH2	2.34	0.42
1:A:475:GLN:HG3	2:B:491:PHE:CZ	2.54	0.42
1:A:345:THR:HG22	1:A:448:PHE:CG	2.55	0.42
5:I:-25:DC:H4'	5:I:-24:DT:OP1	2.20	0.42
5:I:-21:DT:H2''	5:I:-20:DG:C8	2.55	0.42
1:A:348:LEU:HD21	1:A:450:LEU:HD11	2.01	0.42
2:B:2:ILE:HD13	2:B:5:GLN:HB3	2.02	0.42
2:B:346:ARG:HG2	4:H:7:DA:H5''	2.02	0.42
3:C:25:ARG:HA	3:C:62:LYS:O	2.20	0.42
1:A:87:HIS:CD2	1:A:87:HIS:C	2.98	0.42
2:B:469:ILE:HD11	3:C:375:ILE:HG23	2.03	0.41
1:A:339:ALA:O	1:A:343:ILE:HG13	2.20	0.41
1:A:415:TYR:CZ	1:A:419:LEU:HD13	2.56	0.41
2:B:227:TRP:H	2:B:227:TRP:CD1	2.37	0.41
5:I:-16:DT:H2''	5:I:-15:DA:C8	2.56	0.41
2:B:40:TYR:CE2	2:B:131:LEU:HD11	2.55	0.41
1:A:273:VAL:HG23	1:A:319:LEU:HD23	2.02	0.41
1:A:471:LEU:HD23	1:A:471:LEU:O	2.21	0.41
3:C:306:TRP:CD2	3:C:350:GLN:HG2	2.56	0.41
1:A:341:GLY:O	1:A:345:THR:HG23	2.21	0.41

Continued on next page...

Continued from previous page...

Atom-1	Atom-2	Interatomic distance (Å)	Clash overlap (Å)
2:B:326:LYS:HB3	2:B:326:LYS:HE3	1.85	0.41
1:A:273:VAL:CG1	1:A:315:MET:HG2	2.51	0.41
2:B:253:GLU:HG3	7:B:834:HOH:O	2.21	0.41
2:B:15:LYS:HE3	2:B:19:ASP:OD2	2.21	0.41
2:B:247:MET:HB2	2:B:247:MET:HE2	1.77	0.41
3:C:64:LEU:HG	3:C:65:VAL:N	2.34	0.41
1:A:41:ARG:O	1:A:45:VAL:HG23	2.20	0.40
2:B:470:GLU:HA	2:B:470:GLU:OE2	2.21	0.40
3:C:195:TRP:CZ2	3:C:349:ILE:HG21	2.56	0.40
1:A:240:LEU:HA	1:A:240:LEU:HD23	1.65	0.40
1:A:355:ALA:HB3	1:A:375:LEU:HD12	2.03	0.40
1:A:379:GLN:NE2	1:A:379:GLN:HA	2.35	0.40
2:B:74:MET:CB	2:B:76:MET:HE3	2.52	0.40
1:A:165:ASN:O	1:A:166:LYS:HB2	2.21	0.40
3:C:264:ASP:OD2	3:C:297:ARG:NH1	2.54	0.40
3:C:33:LEU:CD2	3:C:88:ASP:HB3	2.52	0.40
3:C:198:VAL:HG21	3:C:203:ALA:HB2	2.04	0.40
2:B:44:LEU:HD23	2:B:44:LEU:HA	1.90	0.40
2:B:474:GLU:O	2:B:478:VAL:HG23	2.21	0.40
3:C:131:LEU:HD22	4:H:8:DC:H2"	2.02	0.40

There are no symmetry-related clashes.

5.3 Torsion angles ⓘ

5.3.1 Protein backbone ⓘ

In the following table, the Percentiles column shows the percent Ramachandran outliers of the chain as a percentile score with respect to all X-ray entries followed by that with respect to entries of similar resolution.

The Analysed column shows the number of residues for which the backbone conformation was analysed, and the total number of residues.

Mol	Chain	Analysed	Favoured	Allowed	Outliers	Percentiles	
1	A	491/499 (98%)	472 (96%)	19 (4%)	0	100	100
2	B	490/504 (97%)	478 (98%)	12 (2%)	0	100	100
3	C	372/383 (97%)	355 (95%)	15 (4%)	2 (0%)	25	34
All	All	1353/1386 (98%)	1305 (96%)	46 (3%)	2 (0%)	48	61

All (2) Ramachandran outliers are listed below:

Mol	Chain	Res	Type
3	C	102	SER
3	C	213	PRO

5.3.2 Protein sidechains ⓘ

In the following table, the Percentiles column shows the percent sidechain outliers of the chain as a percentile score with respect to all X-ray entries followed by that with respect to entries of similar resolution.

The Analysed column shows the number of residues for which the sidechain conformation was analysed, and the total number of residues.

Mol	Chain	Analysed	Rotameric	Outliers	Percentiles	
1	A	399/416 (96%)	389 (98%)	10 (2%)	42	60
2	B	413/432 (96%)	400 (97%)	13 (3%)	35	50
3	C	320/336 (95%)	309 (97%)	11 (3%)	32	47
All	All	1132/1184 (96%)	1098 (97%)	34 (3%)	36	52

All (34) residues with a non-rotameric sidechain are listed below:

Mol	Chain	Res	Type
1	A	3	LEU
1	A	42	ILE
1	A	86	ASN
1	A	98	LEU
1	A	170	GLU
1	A	328	VAL
1	A	377	ARG
1	A	417	THR
1	A	431	LEU
1	A	490	GLU
2	B	2	ILE
2	B	10	SER
2	B	15	LYS
2	B	50	LEU
2	B	59	SER
2	B	60	GLU
2	B	274	ASP
2	B	334	ARG
2	B	421	THR

Continued on next page...

Continued from previous page...

Mol	Chain	Res	Type
2	B	465	GLU
2	B	468	ASP
2	B	481	VAL
2	B	492	LYS
3	C	21	HIS
3	C	131	LEU
3	C	144	SER
3	C	176	SER
3	C	188	LEU
3	C	189	LEU
3	C	190	ASN
3	C	315	ARG
3	C	317	GLN
3	C	380	VAL
3	C	383	SER

Sometimes sidechains can be flipped to improve hydrogen bonding and reduce clashes. All (17) such sidechains are listed below:

Mol	Chain	Res	Type
1	A	12	HIS
1	A	87	HIS
1	A	214	ASN
1	A	379	GLN
1	A	408	ASN
1	A	420	GLN
1	A	457	GLN
1	A	486	GLN
2	B	81	HIS
2	B	141	GLN
2	B	142	HIS
2	B	388	ASN
2	B	467	HIS
2	B	482	GLN
3	C	11	GLN
3	C	317	GLN
3	C	350	GLN

5.3.3 RNA ⓘ

There are no RNA molecules in this entry.

5.4 Non-standard residues in protein, DNA, RNA chains ⓘ

1 non-standard protein/DNA/RNA residue is modelled in this entry.

In the following table, the Counts columns list the number of bonds (or angles) for which Mogul statistics could be retrieved, the number of bonds (or angles) that are observed in the model and the number of bonds (or angles) that are defined in the Chemical Component Dictionary. The Link column lists molecule types, if any, to which the group is linked. The Z score for a bond length (or angle) is the number of standard deviations the observed value is removed from the expected value. A bond length (or angle) with $|Z| > 2$ is considered an outlier worth inspection. RMSZ is the root-mean-square of all Z scores of the bond lengths (or angles).

Mol	Type	Chain	Res	Link	Bond lengths			Bond angles		
					Counts	RMSZ	# Z > 2	Counts	RMSZ	# Z > 2
5	6MA	I	-17	5	18,24,25	3.43	7 (38%)	15,34,37	2.05	3 (20%)

In the following table, the Chirals column lists the number of chiral outliers, the number of chiral centers analysed, the number of these observed in the model and the number defined in the Chemical Component Dictionary. Similar counts are reported in the Torsion and Rings columns. '-' means no outliers of that kind were identified.

Mol	Type	Chain	Res	Link	Chirals	Torsions	Rings
5	6MA	I	-17	5	-	0/5/23/24	0/3/3/3

All (7) bond length outliers are listed below:

Mol	Chain	Res	Type	Atoms	Z	Observed(Å)	Ideal(Å)
5	I	-17	6MA	O4'-C4'	8.09	1.63	1.45
5	I	-17	6MA	C3'-C4'	-7.91	1.31	1.53
5	I	-17	6MA	C6-N6	6.38	1.45	1.35
5	I	-17	6MA	O4'-C1'	-4.14	1.33	1.42
5	I	-17	6MA	C5-C4	-2.57	1.34	1.40
5	I	-17	6MA	C2-N3	2.31	1.35	1.32
5	I	-17	6MA	O3'-C3'	2.18	1.48	1.43

All (3) bond angle outliers are listed below:

Mol	Chain	Res	Type	Atoms	Z	Observed(°)	Ideal(°)
5	I	-17	6MA	N3-C2-N1	-5.80	119.62	128.68
5	I	-17	6MA	C2-N1-C6	4.61	120.55	116.59
5	I	-17	6MA	C1-N6-C6	-2.09	121.07	122.87

There are no chirality outliers.

There are no torsion outliers.

There are no ring outliers.

No monomer is involved in short contacts.

5.5 Carbohydrates [i](#)

There are no oligosaccharides in this entry.

5.6 Ligand geometry [i](#)

2 ligands are modelled in this entry.

In the following table, the Counts columns list the number of bonds (or angles) for which Mogul statistics could be retrieved, the number of bonds (or angles) that are observed in the model and the number of bonds (or angles) that are defined in the Chemical Component Dictionary. The Link column lists molecule types, if any, to which the group is linked. The Z score for a bond length (or angle) is the number of standard deviations the observed value is removed from the expected value. A bond length (or angle) with $|Z| > 2$ is considered an outlier worth inspection. RMSZ is the root-mean-square of all Z scores of the bond lengths (or angles).

Mol	Type	Chain	Res	Link	Bond lengths			Bond angles		
					Counts	RMSZ	$\# Z > 2$	Counts	RMSZ	$\# Z > 2$
6	SAH	B	601	-	24,28,28	1.09	2 (8%)	25,40,40	1.94	6 (24%)
6	SAH	A	501	-	24,28,28	1.15	3 (12%)	25,40,40	1.84	5 (20%)

In the following table, the Chirals column lists the number of chiral outliers, the number of chiral centers analysed, the number of these observed in the model and the number defined in the Chemical Component Dictionary. Similar counts are reported in the Torsion and Rings columns. '-' means no outliers of that kind were identified.

Mol	Type	Chain	Res	Link	Chirals	Torsions	Rings
6	SAH	B	601	-	-	6/11/31/31	0/3/3/3
6	SAH	A	501	-	-	2/11/31/31	0/3/3/3

All (5) bond length outliers are listed below:

Mol	Chain	Res	Type	Atoms	Z	Observed(Å)	Ideal(Å)
6	B	601	SAH	C2-N3	3.51	1.37	1.32
6	A	501	SAH	C2-N3	3.50	1.37	1.32
6	B	601	SAH	C2-N1	2.55	1.38	1.33
6	A	501	SAH	C2-N1	2.52	1.38	1.33
6	A	501	SAH	OXT-C	-2.31	1.23	1.30

All (11) bond angle outliers are listed below:

Mol	Chain	Res	Type	Atoms	Z	Observed(°)	Ideal(°)
6	A	501	SAH	N3-C2-N1	-5.74	119.70	128.68
6	B	601	SAH	N3-C2-N1	-4.95	120.93	128.68
6	A	501	SAH	C5'-SD-CG	-3.68	91.22	102.27
6	B	601	SAH	OXT-C-O	-3.61	115.89	124.09
6	B	601	SAH	CB-CA-C	-3.40	102.21	110.30
6	B	601	SAH	OXT-C-CA	3.30	124.64	113.38
6	A	501	SAH	O4'-C1'-C2'	-3.27	102.15	106.93
6	B	601	SAH	CB-CG-SD	3.05	120.15	113.31
6	A	501	SAH	OXT-C-O	-3.02	117.23	124.09
6	A	501	SAH	OXT-C-CA	2.15	120.69	113.38
6	B	601	SAH	O4'-C1'-C2'	-2.07	103.90	106.93

There are no chirality outliers.

All (8) torsion outliers are listed below:

Mol	Chain	Res	Type	Atoms
6	B	601	SAH	OXT-C-CA-N
6	B	601	SAH	O-C-CA-N
6	B	601	SAH	N-CA-CB-CG
6	B	601	SAH	C-CA-CB-CG
6	B	601	SAH	C4'-C5'-SD-CG
6	A	501	SAH	O-C-CA-CB
6	A	501	SAH	OXT-C-CA-CB
6	B	601	SAH	CA-CB-CG-SD

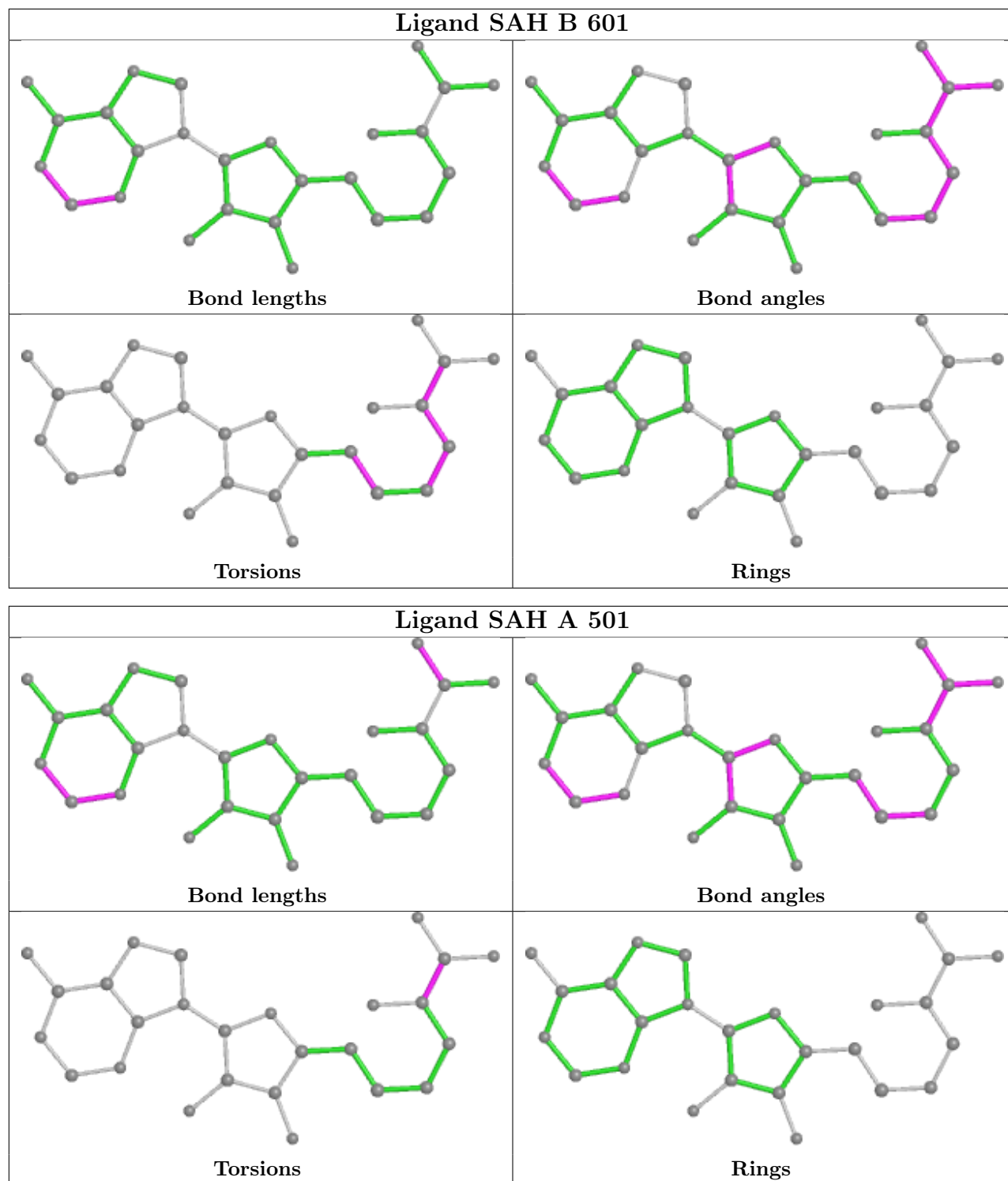
There are no ring outliers.

2 monomers are involved in 4 short contacts:

Mol	Chain	Res	Type	Clashes	Symm-Clashes
6	B	601	SAH	3	0
6	A	501	SAH	1	0

The following is a two-dimensional graphical depiction of Mogul quality analysis of bond lengths, bond angles, torsion angles, and ring geometry for all instances of the Ligand of Interest. In addition, ligands with molecular weight > 250 and outliers as shown on the validation Tables will also be included. For torsion angles, if less than 5% of the Mogul distribution of torsion angles is within 10 degrees of the torsion angle in question, then that torsion angle is considered an outlier. Any bond that is central to one or more torsion angles identified as an outlier by Mogul will be highlighted in the graph. For rings, the root-mean-square deviation (RMSD) between the ring in question and similar rings identified by Mogul is calculated over all ring torsion angles. If the average RMSD is greater than 60 degrees and the minimal RMSD between the ring in question and

any Mogul-identified rings is also greater than 60 degrees, then that ring is considered an outlier. The outliers are highlighted in purple. The color gray indicates Mogul did not find sufficient equivalents in the CSD to analyse the geometry.



5.7 Other polymers ⓘ

There are no such residues in this entry.

5.8 Polymer linkage issues ⓘ

There are no chain breaks in this entry.

6 Fit of model and data

6.1 Protein, DNA and RNA chains

In the following table, the column labelled ‘#RSRZ > 2’ contains the number (and percentage) of RSRZ outliers, followed by percent RSRZ outliers for the chain as percentile scores relative to all X-ray entries and entries of similar resolution. The OWAB column contains the minimum, median, 95th percentile and maximum values of the occupancy-weighted average B-factor per residue. The column labelled ‘Q < 0.9’ lists the number of (and percentage) of residues with an average occupancy less than 0.9.

Mol	Chain	Analysed	<RSRZ>	#RSRZ>2	OWAB(Å ²)	Q<0.9
1	A	495/499 (99%)	-0.24	6 (1%) 76 78	25, 41, 65, 87	0
2	B	494/504 (98%)	-0.42	4 (0%) 82 85	19, 32, 65, 81	0
3	C	374/383 (97%)	-0.20	6 (1%) 70 74	21, 41, 64, 78	0
4	H	25/25 (100%)	-0.66	0 100 100	24, 31, 78, 86	0
5	I	24/25 (96%)	-0.61	0 100 100	25, 33, 81, 92	0
All	All	1412/1436 (98%)	-0.31	16 (1%) 77 80	19, 37, 66, 92	0

All (16) RSRZ outliers are listed below:

Mol	Chain	Res	Type	RSRZ
3	C	328	ALA	3.4
2	B	4	TYR	3.3
2	B	3	GLU	2.8
2	B	67	GLY	2.8
3	C	382	ASN	2.7
1	A	169	GLY	2.7
1	A	2	THR	2.6
3	C	87	TRP	2.6
1	A	1	MET	2.5
1	A	464	THR	2.4
1	A	3	LEU	2.4
3	C	103	ASP	2.3
3	C	102	SER	2.2
3	C	188	LEU	2.2
2	B	69	ALA	2.2
1	A	445	GLU	2.0

6.2 Non-standard residues in protein, DNA, RNA chains [i](#)

In the following table, the Atoms column lists the number of modelled atoms in the group and the number defined in the chemical component dictionary. The B-factors column lists the minimum, median, 95th percentile and maximum values of B factors of atoms in the group. The column labelled 'Q< 0.9' lists the number of atoms with occupancy less than 0.9.

Mol	Type	Chain	Res	Atoms	RSCC	RSR	B-factors(Å ²)	Q<0.9
5	6MA	I	-17	22/23	0.98	0.06	23,27,29,30	0

6.3 Carbohydrates [i](#)

There are no oligosaccharides in this entry.

6.4 Ligands [i](#)

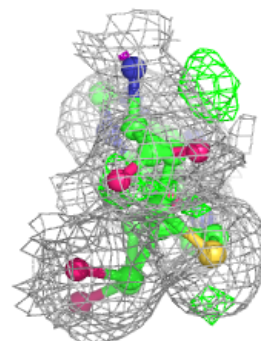
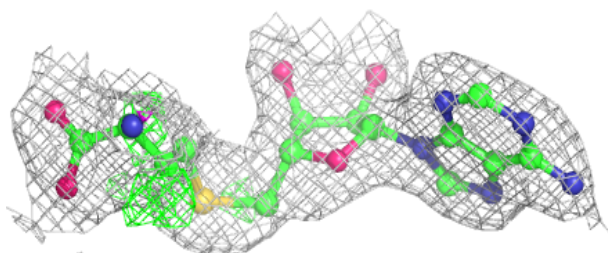
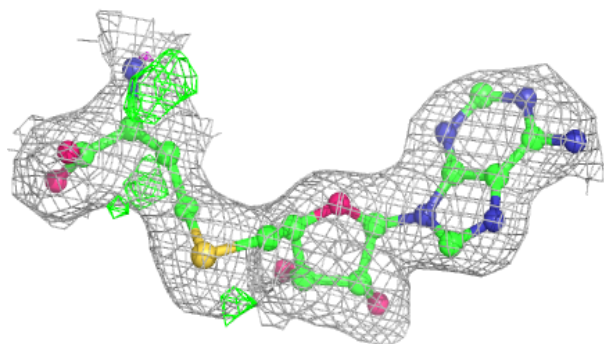
In the following table, the Atoms column lists the number of modelled atoms in the group and the number defined in the chemical component dictionary. The B-factors column lists the minimum, median, 95th percentile and maximum values of B factors of atoms in the group. The column labelled 'Q< 0.9' lists the number of atoms with occupancy less than 0.9.

Mol	Type	Chain	Res	Atoms	RSCC	RSR	B-factors(Å ²)	Q<0.9
6	SAH	B	601	26/26	0.96	0.07	20,24,30,31	0
6	SAH	A	501	26/26	0.97	0.06	24,29,32,33	0

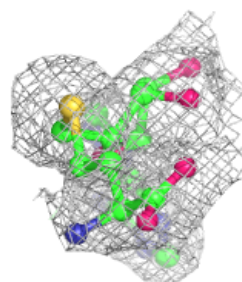
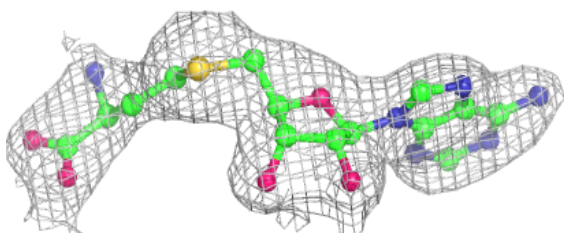
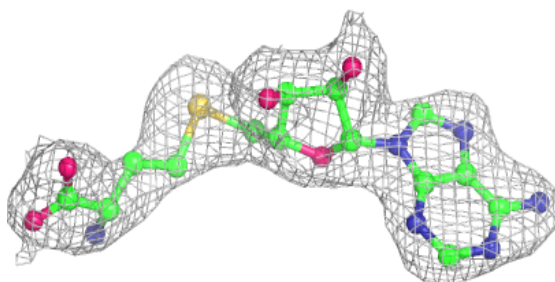
The following is a graphical depiction of the model fit to experimental electron density of all instances of the Ligand of Interest. In addition, ligands with molecular weight > 250 and outliers as shown on the geometry validation Tables will also be included. Each fit is shown from different orientation to approximate a three-dimensional view.

Electron density around SAH B 601:

$2mF_o-DF_c$ (at 0.7 rmsd) in gray
 mF_o-DF_c (at 3 rmsd) in purple (negative)
and green (positive)

**Electron density around SAH A 501:**

$2mF_o-DF_c$ (at 0.7 rmsd) in gray
 mF_o-DF_c (at 3 rmsd) in purple (negative)
and green (positive)



6.5 Other polymers [i](#)

There are no such residues in this entry.