



Full wwPDB X-ray Structure Validation Report ⓘ

Mar 20, 2026 – 06:22 AM UTC

PDB ID : 7YO7 / pdb_00007yo7
Title : Bifunctional xylosidase/glucosidase LXYL with intermediate substrate xylose,
5 seconds
Authors : Yang, L.Y.
Deposited on : 2022-08-01
Resolution : 1.81 Å(reported)

This is a Full wwPDB X-ray Structure Validation Report for a publicly released PDB entry.

We welcome your comments at validation@mail.wwpdb.org

A user guide is available at

<https://www.wwpdb.org/validation/2017/XrayValidationReportHelp>

with specific help available everywhere you see the ⓘ symbol.

The types of validation reports are described at

<http://www.wwpdb.org/validation/2017/FAQs#types>.

The following versions of software and data (see [references ⓘ](#)) were used in the production of this report:

MolProbity : 4-5-2 with Phenix2.0
Mogul : 2022.3.0, CSD as543be (2022)
Xtrriage (Phenix) : 2.0
EDS : 3.0
Buster-report : wwPDB partial adaption of 1.1.7 (2018)
Percentile statistics : 20250101.v01 (using entries in the PDB archive January 1st 2025)
CCP4 : 9.0.010 (Gargrove)
Density-Fitness : 1.0.12
Ideal geometry (proteins) : Engh & Huber (2001)
Ideal geometry (DNA, RNA) : Parkinson et al. (1996)
Validation Pipeline (wwPDB-VP) : 2.49

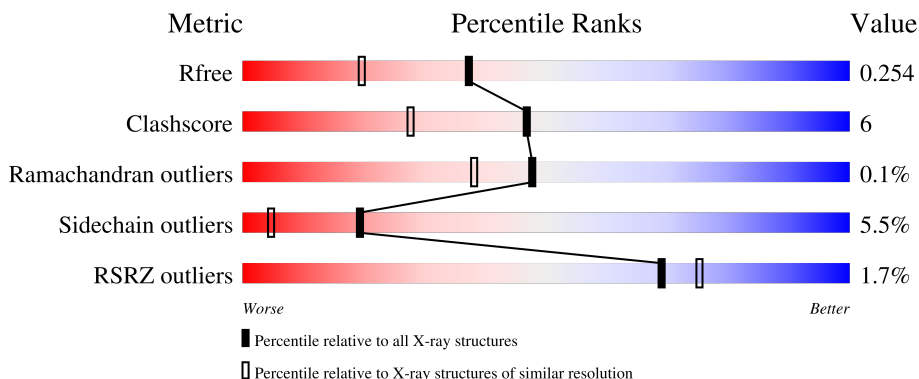
1 Overall quality at a glance

The following experimental techniques were used to determine the structure:

X-RAY DIFFRACTION

The reported resolution of this entry is 1.81 Å.

Percentile scores (ranging between 0-100) for global validation metrics of the entry are shown in the following graphic. The table shows the number of entries on which the scores are based.



Metric	Whole archive (#Entries)	Similar resolution (#Entries, resolution range(Å))
R_{free}	180053	1112 (1.82-1.82)
Clashscore	190562	1148 (1.82-1.82)
Ramachandran outliers	187476	1140 (1.82-1.82)
Sidechain outliers	187428	1140 (1.82-1.82)
RSRZ outliers	180081	1112 (1.82-1.82)

The table below summarises the geometric issues observed across the polymeric chains and their fit to the electron density. The red, orange, yellow and green segments of the lower bar indicate the fraction of residues that contain outliers for ≥ 3 , 2, 1 and 0 types of geometric quality criteria respectively. A grey segment represents the fraction of residues that are not modelled. The numeric value for each fraction is indicated below the corresponding segment, with a dot representing fractions $\leq 5\%$. The upper red bar (where present) indicates the fraction of residues that have poor fit to the electron density. The numeric value is given above the bar.

Mol	Chain	Length	Quality of chain
1	A	803	
1	B	803	
2	C	4	
3	D	2	
3	G	2	

Continued on next page...

Continued from previous page...

Mol	Chain	Length	Quality of chain
3	H	2	 100%
3	I	2	 50% 50%
3	J	2	 50% 50%
4	E	2	 100%
4	F	2	 100%

2 Entry composition [i](#)

There are 8 unique types of molecules in this entry. The entry contains 12859 atoms, of which 0 are hydrogens and 0 are deuteriums.

In the tables below, the ZeroOcc column contains the number of atoms modelled with zero occupancy, the AltConf column contains the number of residues with at least one atom in alternate conformation and the Trace column contains the number of residues modelled with at most 2 atoms.

- Molecule 1 is a protein called Beta-D-xylosidase/beta-D-glucosidase.

Mol	Chain	Residues	Atoms					ZeroOcc	AltConf	Trace
			Total	C	N	O	S			
1	A	756	Total	C	N	O	S	0	0	0
			5706	3615	954	1120	17			
1	B	757	Total	C	N	O	S	0	0	0
			5713	3619	955	1122	17			

- Molecule 2 is an oligosaccharide called 2-acetamido-2-deoxy-beta-D-glucopyranose-(1-1)-alpha-D-mannopyranose-(3-4)-2-acetamido-2-deoxy-beta-D-glucopyranose-(1-4)-2-acetamido-2-deoxy-beta-D-glucopyranose.

Mol	Chain	Residues	Atoms				ZeroOcc	AltConf	Trace
			Total	C	N	O			
2	C	4	Total	C	N	O	0	0	0
			53	30	3	20			

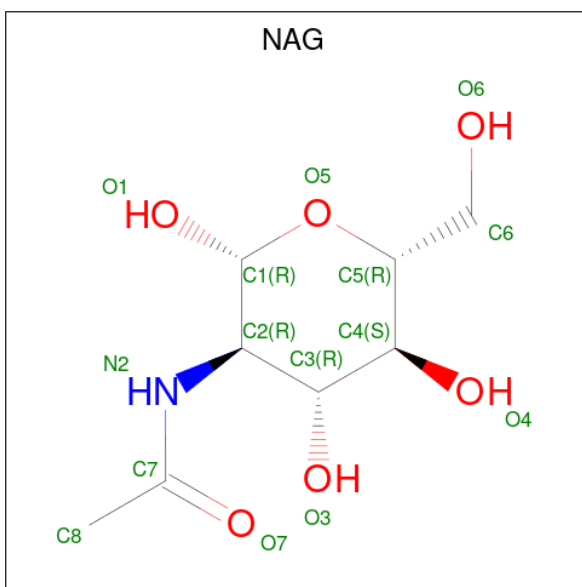
- Molecule 3 is an oligosaccharide called 2-acetamido-2-deoxy-beta-D-glucopyranose-(1-4)-2-acetamido-2-deoxy-beta-D-glucopyranose.

Mol	Chain	Residues	Atoms				ZeroOcc	AltConf	Trace
			Total	C	N	O			
3	D	2	Total	C	N	O	0	0	0
			28	16	2	10			
3	G	2	Total	C	N	O	0	0	0
			28	16	2	10			
3	H	2	Total	C	N	O	0	0	0
			28	16	2	10			
3	I	2	Total	C	N	O	0	0	0
			28	16	2	10			
3	J	2	Total	C	N	O	0	0	0
			28	16	2	10			

- Molecule 4 is an oligosaccharide called 2-acetamido-2-deoxy-beta-D-glucopyranose-(1-3)-alpha-D-mannopyranose.

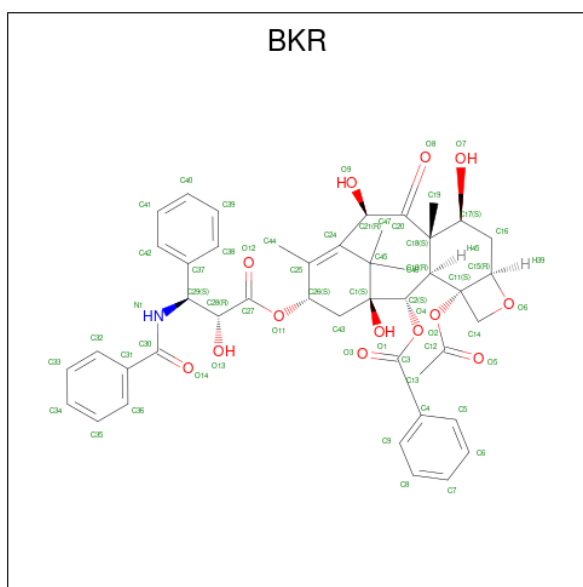
Mol	Chain	Residues	Atoms				ZeroOcc	AltConf	Trace
4	E	2	Total	C	N	O	0	0	0
			25	14	1	10			
4	F	2	Total	C	N	O	0	0	0
			26	14	1	11			

- Molecule 5 is 2-acetamido-2-deoxy-beta-D-glucopyranose (CCD ID: NAG) (formula: $C_8H_{15}NO_6$).



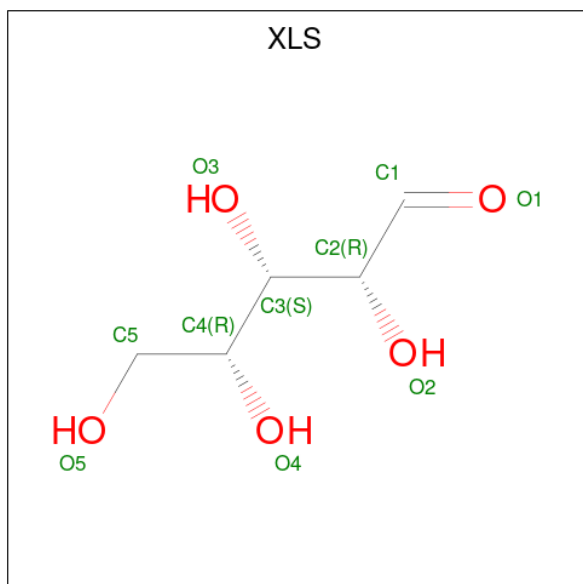
Mol	Chain	Residues	Atoms				ZeroOcc	AltConf
5	A	1	Total	C	N	O	0	0
			14	8	1	5		
5	A	1	Total	C	N	O	0	0
			14	8	1	5		
5	A	1	Total	C	N	O	0	0
			15	8	1	6		
5	A	1	Total	C	N	O	0	0
			14	8	1	5		
5	B	1	Total	C	N	O	0	0
			14	8	1	5		
5	B	1	Total	C	N	O	0	0
			14	8	1	5		

- Molecule 6 is Deacetyltaxol (CCD ID: BKR) (formula: $C_{45}H_{49}NO_{13}$).



Mol	Chain	Residues	Atoms			ZeroOcc	AltConf	
6	A	1	Total	C	N	O	0	0
			59	45	1	13		
6	B	1	Total	C	N	O	0	0
			59	45	1	13		

- Molecule 7 is D-xylose (CCD ID: XLS) (formula: $C_5H_{10}O_5$) (labeled as "Ligand of Interest" by depositor).



Mol	Chain	Residues	Atoms			ZeroOcc	AltConf
7	A	1	Total	C	O	0	0
			10	5	5		

Continued on next page...

Continued from previous page...

Mol	Chain	Residues	Atoms			ZeroOcc	AltConf
7	B	1	Total	C	O	0	0
			10	5	5		

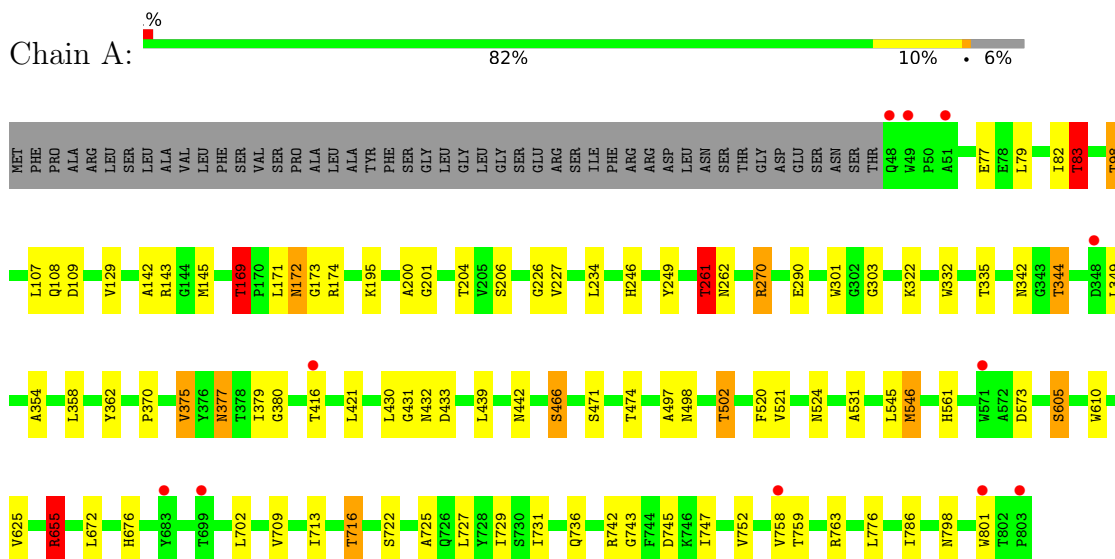
- Molecule 8 is water.

Mol	Chain	Residues	Atoms		ZeroOcc	AltConf
8	A	486	Total	O	0	0
			486	486		
8	B	487	Total	O	0	0
			487	487		

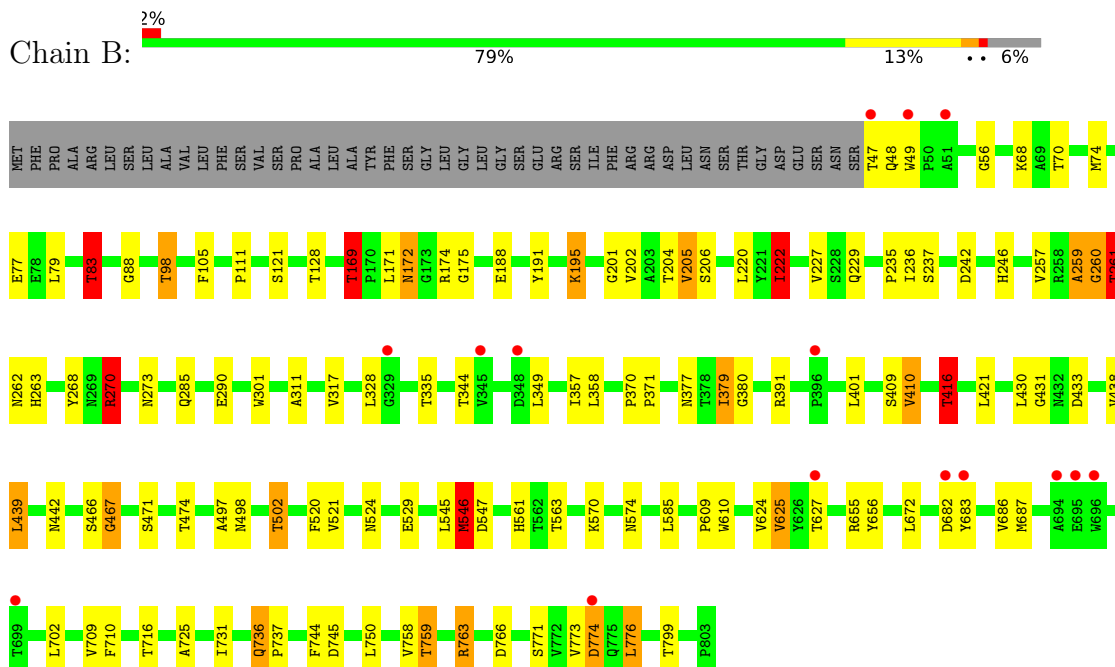
3 Residue-property plots [i](#)

These plots are drawn for all protein, RNA, DNA and oligosaccharide chains in the entry. The first graphic for a chain summarises the proportions of the various outlier classes displayed in the second graphic. The second graphic shows the sequence view annotated by issues in geometry and electron density. Residues are color-coded according to the number of geometric quality criteria for which they contain at least one outlier: green = 0, yellow = 1, orange = 2 and red = 3 or more. A red dot above a residue indicates a poor fit to the electron density ($RSRZ > 2$). Stretches of 2 or more consecutive residues without any outlier are shown as a green connector. Residues present in the sample, but not in the model, are shown in grey.

- Molecule 1: Beta-D-xylosidase/beta-D-glucosidase



- Molecule 1: Beta-D-xylosidase/beta-D-glucosidase



- Molecule 2: 2-acetamido-2-deoxy-beta-D-glucopyranose-(1-1)-alpha-D-mannopyranose-(3-4)-2-acetamido-2-deoxy-beta-D-glucopyranose-(1-4)-2-acetamido-2-deoxy-beta-D-glucopyranose

Chain C:  75% 25%

MAG1
MAG2
MAG3
MAG4

- Molecule 3: 2-acetamido-2-deoxy-beta-D-glucopyranose-(1-4)-2-acetamido-2-deoxy-beta-D-glucopyranose

Chain D:  100%

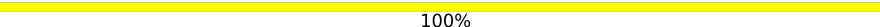
MAG1
MAG2

- Molecule 3: 2-acetamido-2-deoxy-beta-D-glucopyranose-(1-4)-2-acetamido-2-deoxy-beta-D-glucopyranose

Chain G:  100%

MAG1
MAG2

- Molecule 3: 2-acetamido-2-deoxy-beta-D-glucopyranose-(1-4)-2-acetamido-2-deoxy-beta-D-glucopyranose

Chain H:  100%

MAG1
MAG2

- Molecule 3: 2-acetamido-2-deoxy-beta-D-glucopyranose-(1-4)-2-acetamido-2-deoxy-beta-D-glucopyranose

Chain I:  50% 50%

MAG1
MAG2

- Molecule 3: 2-acetamido-2-deoxy-beta-D-glucopyranose-(1-4)-2-acetamido-2-deoxy-beta-D-glucopyranose

Chain J:  50% 50%

MAG1
MAG2

- Molecule 4: 2-acetamido-2-deoxy-beta-D-glucopyranose-(1-3)-alpha-D-mannopyranose

Chain E:  100%

MAN1
MAG2

- Molecule 4: 2-acetamido-2-deoxy-beta-D-glucopyranose-(1-3)-alpha-D-mannopyranose

Chain F:

100%

MAN1
MAG2

4 Data and refinement statistics

Property	Value	Source
Space group	C 2 2 21	Depositor
Cell constants a, b, c, α , β , γ	80.35Å 182.57Å 242.16Å 90.00° 90.00° 90.00°	Depositor
Resolution (Å)	73.54 – 1.81 73.54 – 1.81	Depositor EDS
% Data completeness (in resolution range)	99.9 (73.54-1.81) 99.9 (73.54-1.81)	Depositor EDS
R_{merge}	0.14	Depositor
R_{sym}	(Not available)	Depositor
$\langle I/\sigma(I) \rangle$ ¹	2.18 (at 1.81Å)	Xtrriage
Refinement program	REFMAC 5.8.0135	Depositor
R, R_{free}	0.212 , 0.250 0.219 , 0.254	Depositor DCC
R_{free} test set	7850 reflections (4.86%)	wwPDB-VP
Wilson B-factor (Å ²)	30.7	Xtrriage
Anisotropy	0.037	Xtrriage
Bulk solvent k_{sol} (e/Å ³), B_{sol} (Å ²)	0.34 , 30.0	EDS
L-test for twinning ²	$\langle L \rangle = 0.46$, $\langle L^2 \rangle = 0.29$	Xtrriage
Estimated twinning fraction	No twinning to report.	Xtrriage
F_o, F_c correlation	0.96	EDS
Total number of atoms	12859	wwPDB-VP
Average B, all atoms (Å ²)	35.0	wwPDB-VP

Xtrriage's analysis on translational NCS is as follows: *The analyses of the Patterson function reveals a significant off-origin peak that is 44.96 % of the origin peak, indicating pseudo-translational symmetry. The chance of finding a peak of this or larger height randomly in a structure without pseudo-translational symmetry is equal to 1.4148e-04. The detected translational NCS is most likely also responsible for the elevated intensity ratio.*

¹Intensities estimated from amplitudes.

²Theoretical values of $\langle |L| \rangle$, $\langle L^2 \rangle$ for acentric reflections are 0.5, 0.333 respectively for untwinned datasets, and 0.375, 0.2 for perfectly twinned datasets.

5 Model quality i

5.1 Standard geometry i

Bond lengths and bond angles in the following residue types are not validated in this section: BKR, MAN, NAG, XLS

The Z score for a bond length (or angle) is the number of standard deviations the observed value is removed from the expected value. A bond length (or angle) with $|Z| > 5$ is considered an outlier worth inspection. RMSZ is the root-mean-square of all Z scores of the bond lengths (or angles).

Mol	Chain	Bond lengths		Bond angles	
		RMSZ	# Z >5	RMSZ	# Z >5
1	A	1.28	12/5847 (0.2%)	1.19	21/8000 (0.3%)
1	B	1.26	13/5854 (0.2%)	1.22	33/8010 (0.4%)
All	All	1.27	25/11701 (0.2%)	1.20	54/16010 (0.3%)

Chiral center outliers are detected by calculating the chiral volume of a chiral center and verifying if the center is modelled as a planar moiety or with the opposite hand. A planarity outlier is detected by checking planarity of atoms in a peptide group, atoms in a mainchain group or atoms of a sidechain that are expected to be planar.

Mol	Chain	#Chirality outliers	#Planarity outliers
1	B	0	3

All (25) bond length outliers are listed below:

Mol	Chain	Res	Type	Atoms	Z	Observed(Å)	Ideal(Å)
1	B	371	PRO	CA-C	8.34	1.56	1.51
1	A	332	TRP	CA-C	-8.12	1.49	1.53
1	B	260	GLY	N-CA	-7.23	1.34	1.45
1	A	752	VAL	C-O	-7.08	1.16	1.24
1	A	201	GLY	N-CA	6.82	1.55	1.45
1	A	303	GLY	C-O	-6.21	1.16	1.24
1	A	142	ALA	N-CA	6.17	1.53	1.46
1	B	188	GLU	C-O	-5.92	1.17	1.24
1	A	743	GLY	C-O	-5.92	1.17	1.23
1	B	121	SER	CA-C	-5.92	1.45	1.52
1	A	379	ILE	C-O	-5.88	1.17	1.23
1	B	191	TYR	N-CA	-5.73	1.39	1.46
1	A	466	SER	CA-C	5.58	1.60	1.52
1	A	195	LYS	N-CA	-5.52	1.39	1.46
1	A	377	ASN	CA-CB	5.48	1.59	1.52
1	B	105	PHE	C-O	-5.46	1.17	1.23

Continued on next page...

Continued from previous page...

Mol	Chain	Res	Type	Atoms	Z	Observed(Å)	Ideal(Å)
1	B	379	ILE	C-O	-5.46	1.17	1.23
1	B	175	GLY	N-CA	5.39	1.52	1.45
1	B	467	GLY	N-CA	5.33	1.52	1.45
1	B	205	VAL	N-CA	-5.29	1.40	1.46
1	B	285	GLN	CA-C	5.25	1.59	1.52
1	B	270	ARG	C-O	-5.19	1.16	1.23
1	B	259	ALA	C-O	-5.19	1.17	1.24
1	A	201	GLY	CA-C	5.08	1.59	1.51
1	A	362	TYR	C-O	-5.07	1.17	1.24

All (54) bond angle outliers are listed below:

Mol	Chain	Res	Type	Atoms	Z	Observed(°)	Ideal(°)
1	B	169	THR	CB-CA-C	-10.49	93.14	108.88
1	B	774	ASP	CA-C-N	-9.26	110.38	122.79
1	B	774	ASP	C-N-CA	-9.26	110.38	122.79
1	A	83	THR	N-CA-CB	-8.96	97.47	110.56
1	A	261	THR	CB-CA-C	-8.41	95.77	109.72
1	A	169	THR	CB-CA-C	-8.24	96.51	108.88
1	A	375	VAL	N-CA-CB	-8.21	101.69	112.36
1	B	774	ASP	N-CA-C	-7.73	100.11	110.55
1	A	375	VAL	CB-CA-C	7.54	119.22	110.93
1	B	736	GLN	CA-C-N	-7.36	112.20	119.78
1	B	736	GLN	C-N-CA	-7.36	112.20	119.78
1	B	261	THR	CB-CA-C	-7.34	97.89	109.70
1	A	83	THR	CB-CA-C	7.32	122.92	110.56
1	B	259	ALA	O-C-N	-7.08	113.17	122.59
1	B	259	ALA	N-CA-C	7.01	125.74	110.80
1	B	273	ASN	N-CA-C	6.99	121.13	112.47
1	A	261	THR	N-CA-CB	6.75	120.03	109.83
1	B	750	LEU	CA-C-N	-6.74	113.74	120.21
1	B	750	LEU	C-N-CA	-6.74	113.74	120.21
1	A	249	TYR	N-CA-C	6.71	118.67	111.36
1	A	234	LEU	CA-C-N	-6.64	112.94	119.78
1	A	234	LEU	C-N-CA	-6.64	112.94	119.78
1	B	222	ILE	CB-CA-C	-6.46	99.56	111.18
1	B	546	MET	CG-SD-CE	6.40	114.98	100.90
1	B	370	PRO	CA-C-N	-6.25	115.09	119.66
1	B	370	PRO	C-N-CA	-6.25	115.09	119.66
1	A	655	ARG	NE-CZ-NH2	-6.25	113.58	119.20
1	A	655	ARG	CG-CD-NE	-6.12	98.55	112.00
1	B	195	LYS	N-CA-C	6.11	118.02	111.36

Continued on next page...

Continued from previous page...

Mol	Chain	Res	Type	Atoms	Z	Observed(°)	Ideal(°)
1	B	416	THR	N-CA-CB	-5.98	101.64	110.49
1	A	524	ASN	N-CA-C	5.76	117.72	109.14
1	B	83	THR	N-CA-CB	-5.75	101.64	110.44
1	B	401	LEU	N-CA-C	5.72	117.98	111.11
1	A	261	THR	OG1-CB-CG2	5.72	120.75	109.30
1	A	370	PRO	CA-C-N	-5.68	115.51	119.66
1	A	370	PRO	C-N-CA	-5.68	115.51	119.66
1	B	268	TYR	N-CA-C	5.68	117.55	111.36
1	B	128	THR	N-CA-C	5.63	117.10	111.07
1	A	200	ALA	O-C-N	-5.62	114.83	122.36
1	B	83	THR	CB-CA-C	5.44	119.80	110.01
1	B	391	ARG	NE-CZ-NH1	5.41	126.91	121.50
1	A	226	GLY	N-CA-C	5.32	122.44	115.36
1	B	259	ALA	CA-C-N	5.26	131.73	121.41
1	B	259	ALA	C-N-CA	5.26	131.73	121.41
1	B	261	THR	OG1-CB-CG2	5.25	119.80	109.30
1	A	145	MET	N-CA-C	-5.19	105.62	111.28
1	B	391	ARG	NE-CZ-NH2	-5.18	114.53	119.20
1	A	270	ARG	NE-CZ-NH1	5.17	126.67	121.50
1	B	524	ASN	N-CA-C	5.17	116.67	108.96
1	B	574	ASN	CA-C-N	-5.13	114.50	120.04
1	B	574	ASN	C-N-CA	-5.13	114.50	120.04
1	A	716	THR	CB-CA-C	5.12	119.36	110.72
1	B	270	ARG	NE-CZ-NH1	5.05	126.55	121.50
1	B	625	VAL	N-CA-CB	5.01	116.18	110.72

There are no chirality outliers.

All (3) planarity outliers are listed below:

Mol	Chain	Res	Type	Group
1	B	201	GLY	Peptide
1	B	259	ALA	Peptide
1	B	683	TYR	Peptide

5.2 Too-close contacts

In the following table, the Non-H and H(model) columns list the number of non-hydrogen atoms and hydrogen atoms in the chain respectively. The H(added) column lists the number of hydrogen atoms added and optimized by MolProbity. The Clashes column lists the number of clashes within the asymmetric unit, whereas Symm-Clashes lists symmetry-related clashes.

Mol	Chain	Non-H	H(model)	H(added)	Clashes	Symm-Clashes
1	A	5706	0	5494	50	0
1	B	5713	0	5502	72	0
2	C	53	0	46	3	0
3	D	28	0	25	0	0
3	G	28	0	25	0	0
3	H	28	0	25	0	0
3	I	28	0	25	2	0
3	J	28	0	25	1	0
4	E	25	0	22	3	0
4	F	26	0	24	0	0
5	A	57	0	54	2	0
5	B	28	0	26	2	0
6	A	59	0	0	1	0
6	B	59	0	0	4	0
7	A	10	0	10	2	0
7	B	10	0	10	2	0
8	A	486	0	0	4	0
8	B	487	0	0	9	0
All	All	12859	0	11313	131	0

The all-atom clashscore is defined as the number of clashes found per 1000 atoms (including hydrogen atoms). The all-atom clashscore for this structure is 6.

All (131) close contacts within the same asymmetric unit are listed below, sorted by their clash magnitude.

Atom-1	Atom-2	Interatomic distance (Å)	Clash overlap (Å)
2:C:3:MAN:O4	4:E:1:MAN:C1	2.01	1.09
1:A:521:VAL:HG11	1:A:546:MET:HE3	1.34	1.08
1:A:546:MET:HE2	1:A:546:MET:HA	1.43	1.00
1:B:416:THR:HG21	8:B:1175:HOH:O	1.69	0.92
1:B:235:PRO:O	1:B:270:ARG:HD3	1.75	0.87
1:A:246:HIS:HE1	1:A:290:GLU:OE2	1.59	0.85
1:B:497:ALA:HB1	1:B:502:THR:HG21	1.59	0.84
1:B:442:ASN:HD21	1:B:471:SER:H	1.30	0.79
1:A:442:ASN:HD21	1:A:471:SER:H	1.30	0.76
1:A:421:LEU:HD11	1:A:520:PHE:HZ	1.52	0.75
1:A:546:MET:HA	1:A:546:MET:CE	2.17	0.74
1:B:745:ASP:HB3	1:B:758:VAL:HG23	1.68	0.74
1:A:416:THR:HG21	8:A:1042:HOH:O	1.88	0.73
1:B:416:THR:HG22	8:B:1400:HOH:O	1.87	0.73
8:B:1003:HOH:O	4:E:2:NAG:H82	1.88	0.73
1:A:169:THR:HG23	8:A:1426:HOH:O	1.89	0.72

Continued on next page...

Continued from previous page...

Atom-1	Atom-2	Interatomic distance (Å)	Clash overlap (Å)
1:A:82:ILE:HD13	1:A:358:LEU:HD21	1.72	0.72
1:B:311:ALA:O	1:B:349:LEU:HD11	1.89	0.72
1:B:377:ASN:C	1:B:377:ASN:HD22	1.98	0.71
1:A:354:ALA:O	1:A:358:LEU:HD23	1.91	0.70
1:A:433:ASP:OD2	1:A:561:HIS:HD2	1.76	0.67
1:A:745:ASP:HB3	1:A:758:VAL:CG2	2.24	0.67
1:B:546:MET:HA	1:B:546:MET:CE	2.24	0.67
7:B:904:XLS:O4	7:B:904:XLS:C1	2.45	0.65
1:A:676:HIS:CE1	1:A:801:TRP:CD1	2.85	0.64
1:B:763:ARG:HD3	1:B:766:ASP:OD2	1.97	0.64
1:B:421:LEU:HD11	1:B:520:PHE:HZ	1.63	0.64
7:A:904:XLS:C1	7:A:904:XLS:O4	2.47	0.63
1:B:222:ILE:HG23	1:B:328:LEU:HD23	1.80	0.63
1:A:521:VAL:HG21	1:A:546:MET:HE1	1.79	0.63
1:B:206:SER:OG	1:B:261:THR:CG2	2.47	0.62
1:B:206:SER:OG	1:B:261:THR:HG21	1.98	0.62
1:B:771:SER:O	1:B:774:ASP:O	2.17	0.61
1:B:335:THR:HG23	5:B:901:NAG:H82	1.82	0.61
1:B:433:ASP:OD2	1:B:561:HIS:HD2	1.83	0.61
1:A:169:THR:HG22	1:A:171:LEU:H	1.66	0.60
1:A:377:ASN:HD22	1:A:377:ASN:C	2.09	0.59
1:A:676:HIS:HE1	1:A:801:TRP:CD1	2.21	0.59
1:B:521:VAL:HG21	1:B:546:MET:HE3	1.86	0.58
1:A:521:VAL:HG11	1:A:546:MET:CE	2.21	0.58
2:C:3:MAN:HO4	4:E:1:MAN:C1	2.13	0.57
1:A:725:ALA:HB3	1:A:758:VAL:HG21	1.85	0.57
1:B:547:ASP:OD1	1:B:570:LYS:HE3	2.05	0.57
1:B:498:ASN:O	1:B:502:THR:HG23	2.05	0.57
1:B:745:ASP:HB3	1:B:758:VAL:CG2	2.35	0.56
1:B:169:THR:HG23	8:B:1431:HOH:O	2.06	0.56
1:B:773:VAL:O	2:C:3:MAN:H62	2.05	0.56
1:B:561:HIS:HE1	8:B:1272:HOH:O	1.87	0.56
1:B:70:THR:HG22	1:B:74:MET:HE3	1.88	0.55
1:A:204:THR:H	1:A:262:ASN:HD22	1.53	0.54
1:B:745:ASP:CB	1:B:758:VAL:HG23	2.35	0.54
1:B:466:SER:OG	7:B:904:XLS:H2	2.07	0.54
1:A:335:THR:HG23	5:A:901:NAG:C8	2.39	0.53
1:A:713:ILE:HD11	1:A:747:ILE:HG13	1.90	0.53
1:B:246:HIS:HE1	1:B:290:GLU:OE2	1.91	0.53
1:B:335:THR:HG23	5:B:901:NAG:C8	2.37	0.53
1:B:237:SER:HA	1:B:270:ARG:HG2	1.90	0.53

Continued on next page...

Continued from previous page...

Atom-1	Atom-2	Interatomic distance (Å)	Clash overlap (Å)
1:B:220:LEU:HD12	1:B:222:ILE:HG13	1.92	0.52
1:B:56:GLY:O	1:B:687:MET:HE1	2.10	0.52
1:B:502:THR:HG21	8:B:1121:HOH:O	2.09	0.52
1:B:521:VAL:HG21	1:B:546:MET:CE	2.40	0.52
1:A:745:ASP:HB3	1:A:758:VAL:HG23	1.92	0.51
1:B:204:THR:H	1:B:262:ASN:HD22	1.58	0.51
1:B:242:ASP:O	1:B:246:HIS:HD2	1.94	0.51
1:A:335:THR:HG23	5:A:901:NAG:H83	1.92	0.50
1:A:573:ASP:OD1	1:A:655:ARG:NH2	2.45	0.50
1:B:47:THR:C	1:B:49:TRP:H	2.20	0.50
1:A:497:ALA:HB1	1:A:502:THR:HG21	1.94	0.50
1:B:774:ASP:HB2	1:B:776:LEU:HD22	1.94	0.50
1:B:172:ASN:HD22	1:B:174:ARG:H	1.60	0.48
1:B:563:THR:HG22	1:B:585:LEU:HD11	1.95	0.48
1:A:377:ASN:HD21	1:A:380:GLY:H	1.62	0.47
1:A:206:SER:OG	1:A:261:THR:CG2	2.62	0.47
1:B:710:PHE:CE1	1:B:759:THR:HB	2.49	0.47
1:A:573:ASP:CG	1:A:655:ARG:HH22	2.22	0.47
1:B:317:VAL:HG22	1:B:357:ILE:HD11	1.95	0.47
1:A:731:ILE:O	1:A:736:GLN:HG2	2.15	0.47
1:B:111:PRO:HD2	1:B:467:GLY:HA2	1.97	0.47
6:A:903:BKR:C20	6:A:903:BKR:C46	2.93	0.47
1:A:206:SER:OG	1:A:261:THR:HG21	2.15	0.46
6:B:903:BKR:C46	6:B:903:BKR:C20	2.92	0.46
1:A:79:LEU:O	1:A:83:THR:HB	2.15	0.46
1:B:377:ASN:HD21	1:B:380:GLY:H	1.63	0.46
1:A:172:ASN:HD22	1:A:174:ARG:H	1.64	0.45
1:A:246:HIS:CE1	1:A:290:GLU:OE2	2.52	0.45
1:A:466:SER:OG	7:A:904:XLS:H2	2.17	0.45
1:A:605:SER:OG	1:A:722:SER:HB2	2.17	0.45
1:A:416:THR:HG23	8:A:1386:HOH:O	2.16	0.44
1:B:257:VAL:O	1:B:260:GLY:HA2	2.17	0.44
1:A:521:VAL:HG21	1:A:546:MET:CE	2.45	0.44
1:A:729:ILE:HD12	1:A:742:ARG:HG3	2.00	0.44
1:B:88:GLY:O	1:B:379:ILE:CD1	2.66	0.44
1:B:195:LYS:HE3	1:B:686:VAL:HG21	2.00	0.44
1:A:342:ASN:OD1	1:A:344:THR:HG23	2.17	0.44
1:A:358:LEU:HD22	1:A:358:LEU:N	2.33	0.44
1:B:222:ILE:HD13	6:B:903:BKR:C34	2.48	0.44
1:B:409:SER:O	1:B:410:VAL:C	2.61	0.44
1:B:546:MET:HA	1:B:546:MET:HE2	1.97	0.44

Continued on next page...

Continued from previous page...

Atom-1	Atom-2	Interatomic distance (Å)	Clash overlap (Å)
1:B:222:ILE:HG23	1:B:328:LEU:CD2	2.47	0.43
1:B:433:ASP:OD2	1:B:561:HIS:CD2	2.69	0.43
1:A:98:THR:HG21	3:I:1:NAG:O3	2.18	0.43
1:A:107:LEU:HD12	1:A:107:LEU:N	2.34	0.43
1:A:498:ASN:O	1:A:502:THR:HG23	2.18	0.43
1:B:206:SER:OG	1:B:261:THR:HG23	2.18	0.43
1:B:776:LEU:C	1:B:776:LEU:HD23	2.44	0.43
1:B:497:ALA:HB1	1:B:502:THR:CG2	2.39	0.43
1:A:98:THR:CG2	3:I:1:NAG:O3	2.66	0.43
1:B:222:ILE:HD12	1:B:229:GLN:HB2	2.00	0.43
1:B:438:VAL:HG23	1:B:439:LEU:HD13	2.01	0.43
1:B:731:ILE:O	1:B:736:GLN:HG2	2.20	0.42
1:B:736:GLN:HG3	1:B:737:PRO:HD2	2.02	0.42
1:B:79:LEU:O	1:B:83:THR:HB	2.18	0.42
1:B:502:THR:CG2	8:B:1121:HOH:O	2.67	0.42
6:B:903:BKR:C26	6:B:903:BKR:C47	2.95	0.42
1:A:108:GLN:HG3	1:A:109:ASP:O	2.20	0.41
1:A:786:ILE:O	1:A:798:ASN:HA	2.20	0.41
1:B:431:GLY:HA2	1:B:545:LEU:HD11	2.02	0.41
1:B:655:ARG:HG2	1:B:656:TYR:CE2	2.55	0.41
1:B:725:ALA:O	1:B:744:PHE:HA	2.21	0.41
1:A:322:LYS:NZ	8:A:1006:HOH:O	2.53	0.41
1:B:206:SER:CB	1:B:261:THR:HG21	2.49	0.41
1:B:421:LEU:HD11	1:B:520:PHE:CZ	2.49	0.41
1:B:98:THR:CG2	3:J:1:NAG:O3	2.68	0.41
1:B:83:THR:HG22	8:B:1104:HOH:O	2.20	0.41
1:B:169:THR:CG2	8:B:1431:HOH:O	2.68	0.41
1:B:169:THR:HG22	1:B:171:LEU:H	1.85	0.41
1:A:431:GLY:HA2	1:A:545:LEU:HD11	2.03	0.41
1:B:624:VAL:O	1:B:624:VAL:HG13	2.20	0.41
6:B:903:BKR:C10	6:B:903:BKR:C24	2.99	0.40
1:B:205:VAL:HG22	1:B:263:HIS:HB2	2.02	0.40
1:A:173:GLY:HA3	1:A:531:ALA:O	2.21	0.40

There are no symmetry-related clashes.

5.3 Torsion angles [i](#)

5.3.1 Protein backbone [i](#)

In the following table, the Percentiles column shows the percent Ramachandran outliers of the chain as a percentile score with respect to all X-ray entries followed by that with respect to entries of similar resolution.

The Analysed column shows the number of residues for which the backbone conformation was analysed, and the total number of residues.

Mol	Chain	Analysed	Favoured	Allowed	Outliers	Percentiles	
1	A	754/803 (94%)	720 (96%)	34 (4%)	0	100	100
1	B	755/803 (94%)	721 (96%)	32 (4%)	2 (0%)	36	26
All	All	1509/1606 (94%)	1441 (96%)	66 (4%)	2 (0%)	48	38

All (2) Ramachandran outliers are listed below:

Mol	Chain	Res	Type
1	B	48	GLN
1	B	236	ILE

5.3.2 Protein sidechains [i](#)

In the following table, the Percentiles column shows the percent sidechain outliers of the chain as a percentile score with respect to all X-ray entries followed by that with respect to entries of similar resolution.

The Analysed column shows the number of residues for which the sidechain conformation was analysed, and the total number of residues.

Mol	Chain	Analysed	Rotameric	Outliers	Percentiles	
1	A	607/648 (94%)	575 (95%)	32 (5%)	20	5
1	B	608/648 (94%)	573 (94%)	35 (6%)	18	4
All	All	1215/1296 (94%)	1148 (94%)	67 (6%)	19	5

All (67) residues with a non-rotameric sidechain are listed below:

Mol	Chain	Res	Type
1	A	77	GLU
1	A	83	THR
1	A	98	THR
1	A	129	VAL

Continued on next page...

Continued from previous page...

Mol	Chain	Res	Type
1	A	143	ARG
1	A	169	THR
1	A	172	ASN
1	A	227	VAL
1	A	261	THR
1	A	270	ARG
1	A	301	TRP
1	A	344	THR
1	A	349	LEU
1	A	375	VAL
1	A	430	LEU
1	A	432	ASN
1	A	439	LEU
1	A	474	THR
1	A	502	THR
1	A	546	MET
1	A	605	SER
1	A	610	TRP
1	A	625	VAL
1	A	655	ARG
1	A	672	LEU
1	A	702	LEU
1	A	709	VAL
1	A	716	THR
1	A	727	LEU
1	A	759	THR
1	A	763	ARG
1	A	776	LEU
1	B	68	LYS
1	B	77	GLU
1	B	83	THR
1	B	98	THR
1	B	169	THR
1	B	172	ASN
1	B	202	VAL
1	B	222	ILE
1	B	227	VAL
1	B	261	THR
1	B	270	ARG
1	B	301	TRP
1	B	344	THR
1	B	358	LEU

Continued on next page...

Continued from previous page...

Mol	Chain	Res	Type
1	B	410	VAL
1	B	416	THR
1	B	430	LEU
1	B	439	LEU
1	B	474	THR
1	B	502	THR
1	B	529	GLU
1	B	546	MET
1	B	609	PRO
1	B	610	TRP
1	B	625	VAL
1	B	627	THR
1	B	672	LEU
1	B	682	ASP
1	B	702	LEU
1	B	709	VAL
1	B	716	THR
1	B	759	THR
1	B	763	ARG
1	B	776	LEU
1	B	799	THR

Sometimes sidechains can be flipped to improve hydrogen bonding and reduce clashes. All (25) such sidechains are listed below:

Mol	Chain	Res	Type
1	A	150	HIS
1	A	152	GLN
1	A	172	ASN
1	A	229	GLN
1	A	246	HIS
1	A	262	ASN
1	A	377	ASN
1	A	442	ASN
1	A	561	HIS
1	A	676	HIS
1	A	740	GLN
1	A	775	GLN
1	B	152	GLN
1	B	172	ASN
1	B	239	ASN
1	B	246	HIS
1	B	262	ASN

Continued on next page...

Continued from previous page...

Mol	Chain	Res	Type
1	B	273	ASN
1	B	313	ASN
1	B	366	GLN
1	B	377	ASN
1	B	442	ASN
1	B	561	HIS
1	B	633	GLN
1	B	781	ASN

5.3.3 RNA [i](#)

There are no RNA molecules in this entry.

5.4 Non-standard residues in protein, DNA, RNA chains [i](#)

There are no non-standard protein/DNA/RNA residues in this entry.

5.5 Carbohydrates [i](#)

18 monosaccharides are modelled in this entry.

In the following table, the Counts columns list the number of bonds (or angles) for which Mogul statistics could be retrieved, the number of bonds (or angles) that are observed in the model and the number of bonds (or angles) that are defined in the Chemical Component Dictionary. The Link column lists molecule types, if any, to which the group is linked. The Z score for a bond length (or angle) is the number of standard deviations the observed value is removed from the expected value. A bond length (or angle) with $|Z| > 2$ is considered an outlier worth inspection. RMSZ is the root-mean-square of all Z scores of the bond lengths (or angles).

Mol	Type	Chain	Res	Link	Bond lengths			Bond angles		
					Counts	RMSZ	# Z > 2	Counts	RMSZ	# Z > 2
2	NAG	C	1	2,1	14,14,15	0.74	0	17,19,21	1.11	2 (11%)
2	NAG	C	2	2	14,14,15	0.67	0	17,19,21	1.77	4 (23%)
2	MAN	C	3	2	11,11,12	1.27	1 (9%)	14,15,17	3.01	9 (64%)
2	NAG	C	4	2	14,14,15	1.18	1 (7%)	17,19,21	2.84	7 (41%)
3	NAG	D	1	3,1	14,14,15	1.04	1 (7%)	17,19,21	1.27	3 (17%)
3	NAG	D	2	3	14,14,15	1.28	1 (7%)	17,19,21	1.70	4 (23%)
4	MAN	E	1	4	11,11,12	0.68	0	15,15,17	1.48	2 (13%)
4	NAG	E	2	4	14,14,15	0.81	0	17,19,21	2.42	6 (35%)
4	MAN	F	1	4	12,12,12	1.22	1 (8%)	17,17,17	1.86	4 (23%)

Mol	Type	Chain	Res	Link	Bond lengths			Bond angles		
					Counts	RMSZ	# Z > 2	Counts	RMSZ	# Z > 2
4	NAG	F	2	4	14,14,15	1.37	2 (14%)	17,19,21	3.03	9 (52%)
3	NAG	G	1	3,1	14,14,15	0.66	0	17,19,21	1.18	1 (5%)
3	NAG	G	2	3	14,14,15	1.11	1 (7%)	17,19,21	1.24	2 (11%)
3	NAG	H	1	3,1	14,14,15	0.94	0	17,19,21	1.47	4 (23%)
3	NAG	H	2	3	14,14,15	1.01	0	17,19,21	1.17	2 (11%)
3	NAG	I	1	3,1	14,14,15	0.93	0	17,19,21	1.83	3 (17%)
3	NAG	I	2	3	14,14,15	1.00	0	17,19,21	2.27	6 (35%)
3	NAG	J	1	3,1	14,14,15	0.81	0	17,19,21	1.60	4 (23%)
3	NAG	J	2	3	14,14,15	0.81	0	17,19,21	1.38	2 (11%)

In the following table, the Chirals column lists the number of chiral outliers, the number of chiral centers analysed, the number of these observed in the model and the number defined in the Chemical Component Dictionary. Similar counts are reported in the Torsion and Rings columns. '-' means no outliers of that kind were identified.

Mol	Type	Chain	Res	Link	Chirals	Torsions	Rings
2	NAG	C	1	2,1	-	0/6/23/26	0/1/1/1
2	NAG	C	2	2	-	0/6/23/26	0/1/1/1
2	MAN	C	3	2	-	1/2/18/22	0/1/1/1
2	NAG	C	4	2	-	2/6/23/26	0/1/1/1
3	NAG	D	1	3,1	-	0/6/23/26	0/1/1/1
3	NAG	D	2	3	-	0/6/23/26	0/1/1/1
4	MAN	E	1	4	-	2/2/19/22	0/1/1/1
4	NAG	E	2	4	-	2/6/23/26	0/1/1/1
4	MAN	F	1	4	-	0/2/22/22	0/1/1/1
4	NAG	F	2	4	-	3/6/23/26	0/1/1/1
3	NAG	G	1	3,1	-	0/6/23/26	0/1/1/1
3	NAG	G	2	3	-	0/6/23/26	0/1/1/1
3	NAG	H	1	3,1	-	0/6/23/26	0/1/1/1
3	NAG	H	2	3	-	2/6/23/26	0/1/1/1
3	NAG	I	1	3,1	-	0/6/23/26	0/1/1/1
3	NAG	I	2	3	-	0/6/23/26	0/1/1/1
3	NAG	J	1	3,1	-	0/6/23/26	0/1/1/1
3	NAG	J	2	3	-	1/6/23/26	0/1/1/1

All (8) bond length outliers are listed below:

Mol	Chain	Res	Type	Atoms	Z	Observed(Å)	Ideal(Å)
4	F	2	NAG	C1-C2	3.62	1.57	1.52

Continued on next page...

Continued from previous page...

Mol	Chain	Res	Type	Atoms	Z	Observed(Å)	Ideal(Å)
4	F	1	MAN	O1-C1	2.97	1.48	1.39
3	D	2	NAG	C4-C5	2.63	1.58	1.53
3	D	1	NAG	C2-N2	-2.56	1.42	1.46
4	F	2	NAG	C2-N2	2.55	1.50	1.46
2	C	3	MAN	O5-C1	-2.54	1.36	1.42
3	G	2	NAG	C1-C2	2.22	1.55	1.52
2	C	4	NAG	O5-C1	2.15	1.47	1.43

All (74) bond angle outliers are listed below:

Mol	Chain	Res	Type	Atoms	Z	Observed(°)	Ideal(°)
2	C	4	NAG	O5-C1-C2	7.37	122.69	111.29
4	E	2	NAG	C1-O5-C5	7.09	121.69	112.19
4	F	2	NAG	C1-O5-C5	6.34	120.68	112.19
2	C	3	MAN	O5-C5-C4	5.36	117.41	110.10
4	F	2	NAG	C2-N2-C7	5.04	129.65	122.90
3	I	2	NAG	O3-C3-C4	-4.95	98.70	110.38
4	F	2	NAG	C3-C4-C5	-4.65	101.81	110.23
2	C	3	MAN	O5-C5-C6	-4.62	94.99	106.44
2	C	4	NAG	O5-C5-C4	-4.42	100.08	110.83
4	F	1	MAN	O1-C1-C2	4.36	121.64	108.98
2	C	2	NAG	O5-C1-C2	-4.15	104.87	111.29
3	I	1	NAG	O5-C1-C2	-4.12	104.92	111.29
3	I	1	NAG	C1-C2-N2	-4.03	104.08	110.43
3	I	2	NAG	O4-C4-C5	3.99	119.14	109.32
2	C	4	NAG	C6-C5-C4	3.94	122.70	113.02
2	C	4	NAG	O5-C5-C6	3.86	115.18	107.66
3	J	2	NAG	O3-C3-C2	-3.77	101.57	109.40
2	C	2	NAG	O4-C4-C5	3.74	118.53	109.32
3	D	2	NAG	O4-C4-C5	3.70	118.43	109.32
4	F	2	NAG	C4-C3-C2	-3.48	105.92	111.02
2	C	3	MAN	O2-C2-C1	-3.47	102.46	108.94
4	F	2	NAG	O7-C7-C8	-3.46	115.89	122.05
3	D	2	NAG	O5-C1-C2	-3.42	105.99	111.29
2	C	3	MAN	O1-C1-O5	-3.41	100.29	110.41
3	J	1	NAG	C1-O5-C5	3.38	116.72	112.19
2	C	3	MAN	C4-C3-C2	-3.36	107.59	111.50
2	C	3	MAN	O1-C1-C2	3.35	118.57	108.99
2	C	3	MAN	C6-C5-C4	3.28	118.00	113.53
2	C	4	NAG	C2-N2-C7	3.26	127.27	122.90
3	I	2	NAG	O5-C1-C2	-3.19	106.35	111.29
4	F	2	NAG	C8-C7-N2	3.18	121.40	116.12

Continued on next page...

Continued from previous page...

Mol	Chain	Res	Type	Atoms	Z	Observed(°)	Ideal(°)
4	F	1	MAN	C1-C2-C3	3.14	116.76	110.36
4	F	1	MAN	O2-C2-C3	-3.13	103.00	110.38
4	F	1	MAN	O3-C3-C2	2.99	117.43	110.38
4	E	2	NAG	O5-C1-C2	2.98	115.89	111.29
2	C	3	MAN	O4-C4-C3	2.97	117.23	109.86
3	I	2	NAG	C4-C3-C2	2.95	115.34	111.02
4	E	2	NAG	O4-C4-C5	2.92	116.52	109.32
4	F	2	NAG	C1-C2-N2	2.89	114.99	110.43
3	G	2	NAG	C1-O5-C5	2.87	116.04	112.19
4	E	2	NAG	C3-C4-C5	-2.85	105.06	110.23
3	J	1	NAG	C8-C7-N2	-2.80	111.47	116.12
2	C	4	NAG	C3-C4-C5	-2.79	105.17	110.23
3	G	1	NAG	O5-C1-C2	-2.65	107.19	111.29
2	C	2	NAG	O3-C3-C4	-2.61	104.22	110.38
4	E	2	NAG	O3-C3-C2	2.61	114.82	109.40
4	F	2	NAG	O4-C4-C3	2.61	116.52	110.38
3	J	1	NAG	C1-C2-N2	-2.60	106.34	110.43
2	C	4	NAG	C4-C3-C2	2.59	114.81	111.02
2	C	1	NAG	O6-C6-C5	-2.58	102.56	111.33
3	I	2	NAG	C2-N2-C7	2.47	126.21	122.90
3	I	1	NAG	C1-O5-C5	2.44	115.46	112.19
3	D	2	NAG	O3-C3-C2	-2.44	104.33	109.40
2	C	1	NAG	O5-C1-C2	-2.43	107.53	111.29
2	C	3	MAN	O4-C4-C5	-2.40	105.09	110.08
4	E	1	MAN	O4-C4-C3	-2.39	104.75	110.38
3	H	1	NAG	O5-C1-C2	-2.37	107.62	111.29
3	I	2	NAG	O7-C7-C8	-2.36	117.86	122.05
3	J	1	NAG	O3-C3-C2	-2.33	104.57	109.40
4	F	2	NAG	O4-C4-C5	2.31	115.01	109.32
3	H	2	NAG	C1-O5-C5	2.30	115.27	112.19
3	D	1	NAG	O3-C3-C2	-2.28	104.67	109.40
3	J	2	NAG	O4-C4-C5	2.26	114.88	109.32
3	D	1	NAG	C4-C3-C2	-2.25	107.73	111.02
3	H	1	NAG	O4-C4-C3	-2.22	105.14	110.38
2	C	2	NAG	C1-O5-C5	2.20	115.14	112.19
3	D	2	NAG	O5-C5-C6	-2.13	103.52	107.66
3	H	1	NAG	O5-C5-C4	-2.12	105.67	110.83
3	D	1	NAG	C6-C5-C4	2.12	118.23	113.02
4	E	1	MAN	O6-C6-C5	2.11	118.51	111.33
3	H	2	NAG	C2-N2-C7	2.10	125.72	122.90
3	G	2	NAG	C2-N2-C7	2.09	125.70	122.90
4	E	2	NAG	O4-C4-C3	-2.08	105.47	110.38

Continued on next page...

Continued from previous page...

Mol	Chain	Res	Type	Atoms	Z	Observed(°)	Ideal(°)
3	H	1	NAG	C1-C2-N2	-2.08	107.16	110.43

There are no chirality outliers.

All (13) torsion outliers are listed below:

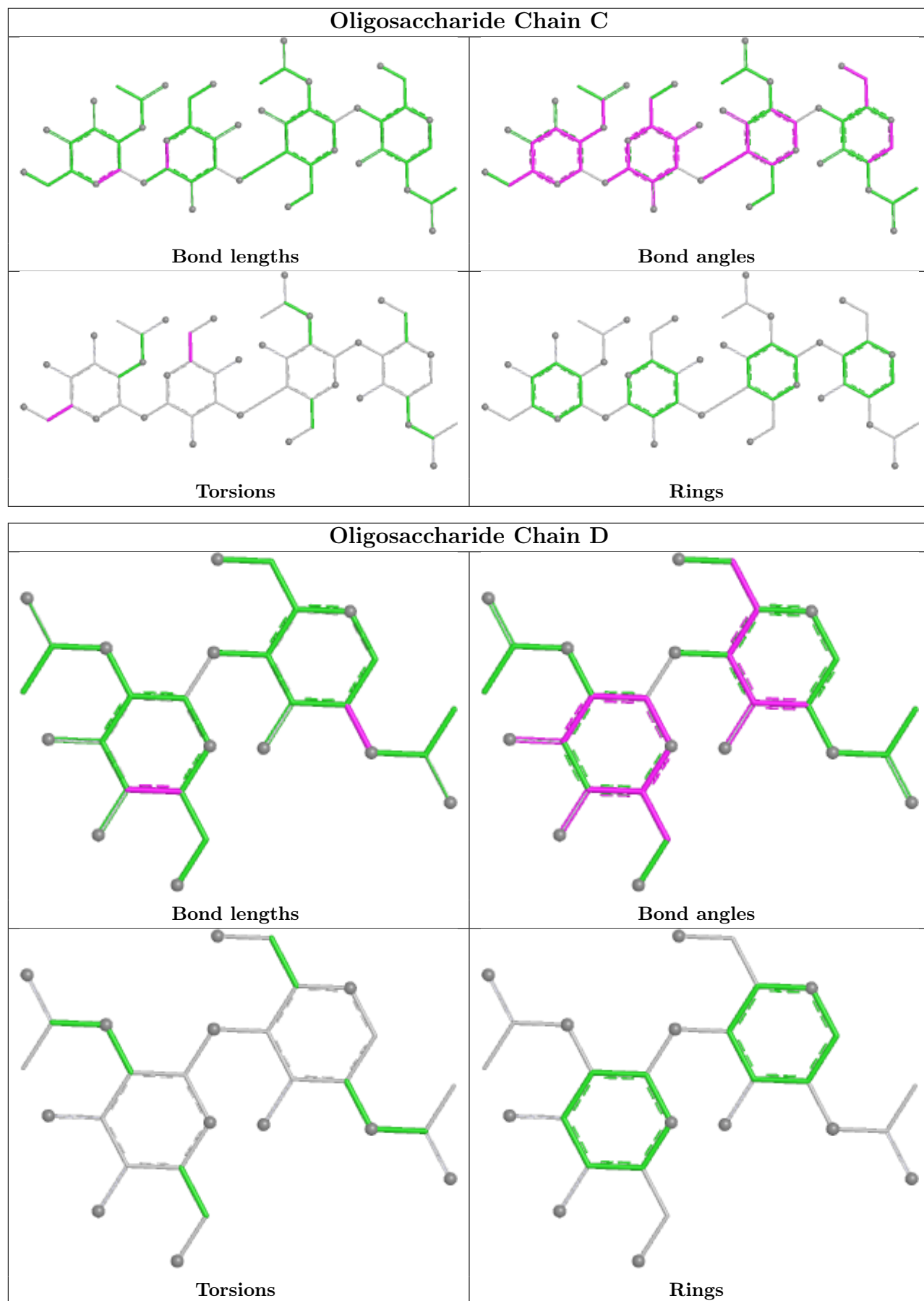
Mol	Chain	Res	Type	Atoms
4	F	2	NAG	C3-C2-N2-C7
4	E	1	MAN	C4-C5-C6-O6
4	E	2	NAG	O5-C5-C6-O6
4	E	2	NAG	C4-C5-C6-O6
4	F	2	NAG	C4-C5-C6-O6
4	F	2	NAG	O5-C5-C6-O6
2	C	4	NAG	C4-C5-C6-O6
4	E	1	MAN	O5-C5-C6-O6
3	H	2	NAG	C4-C5-C6-O6
2	C	4	NAG	O5-C5-C6-O6
2	C	3	MAN	O5-C5-C6-O6
3	H	2	NAG	O5-C5-C6-O6
3	J	2	NAG	C4-C5-C6-O6

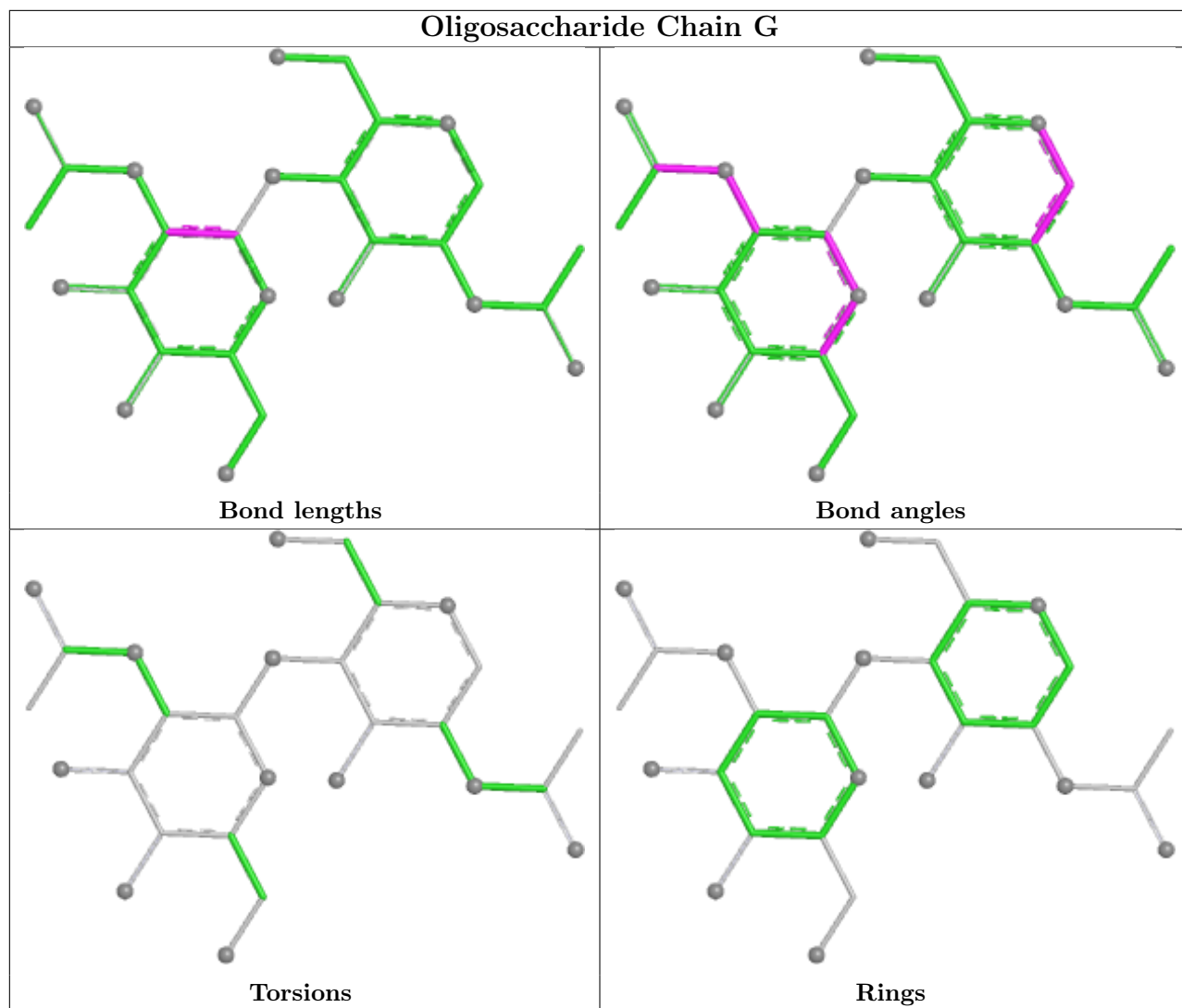
There are no ring outliers.

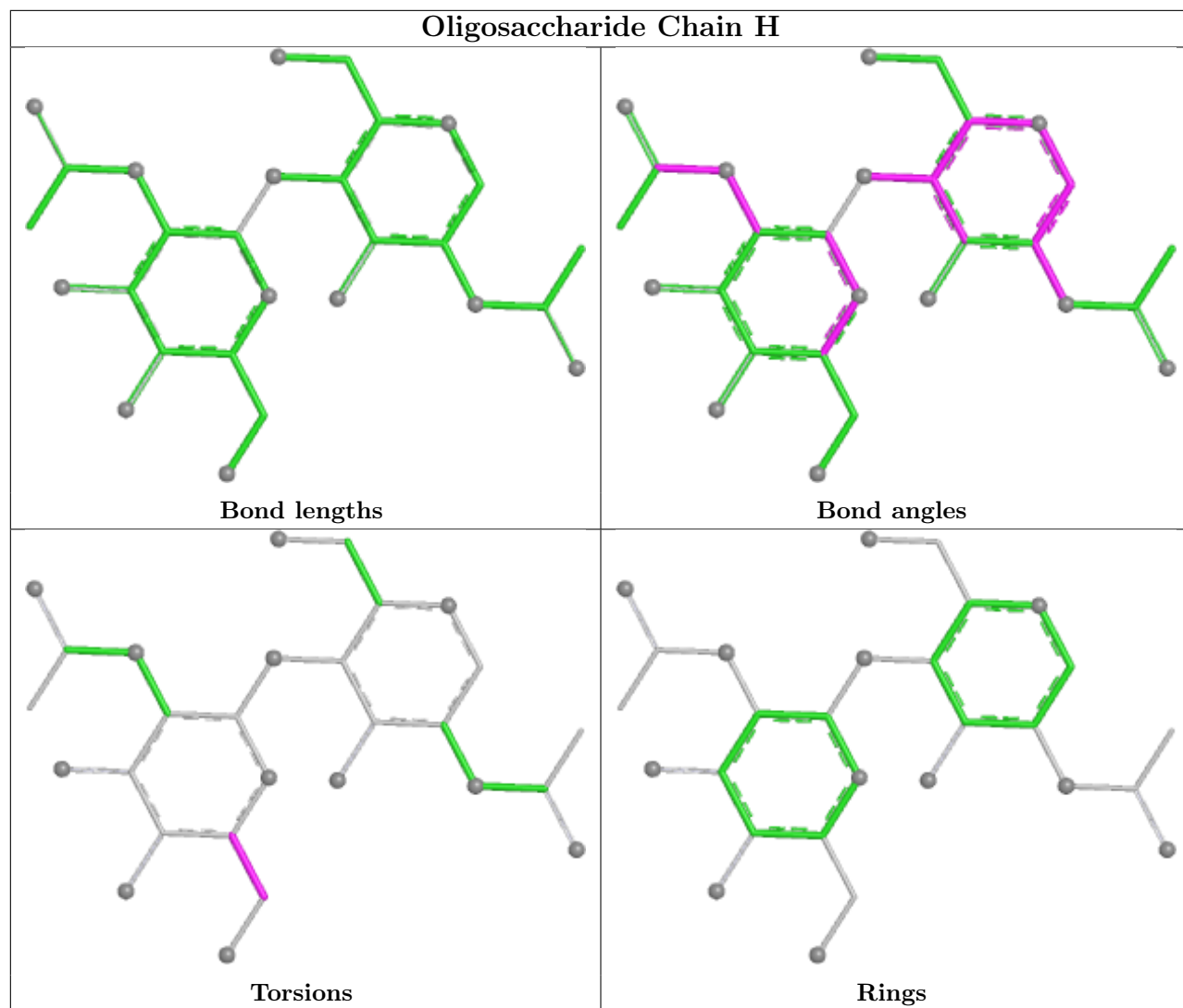
5 monomers are involved in 7 short contacts:

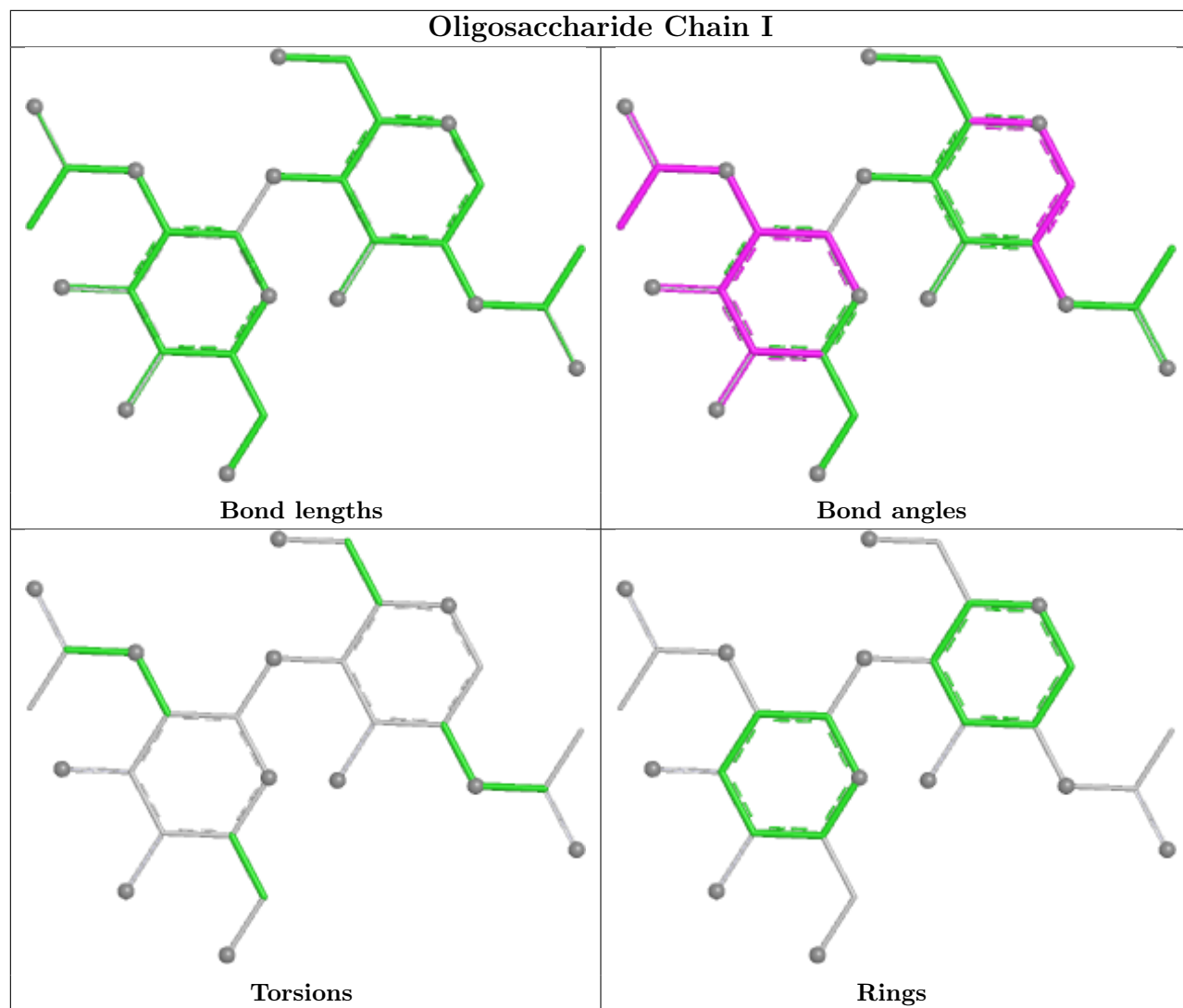
Mol	Chain	Res	Type	Clashes	Symm-Clashes
3	I	1	NAG	2	0
4	E	2	NAG	1	0
3	J	1	NAG	1	0
4	E	1	MAN	2	0
2	C	3	MAN	3	0

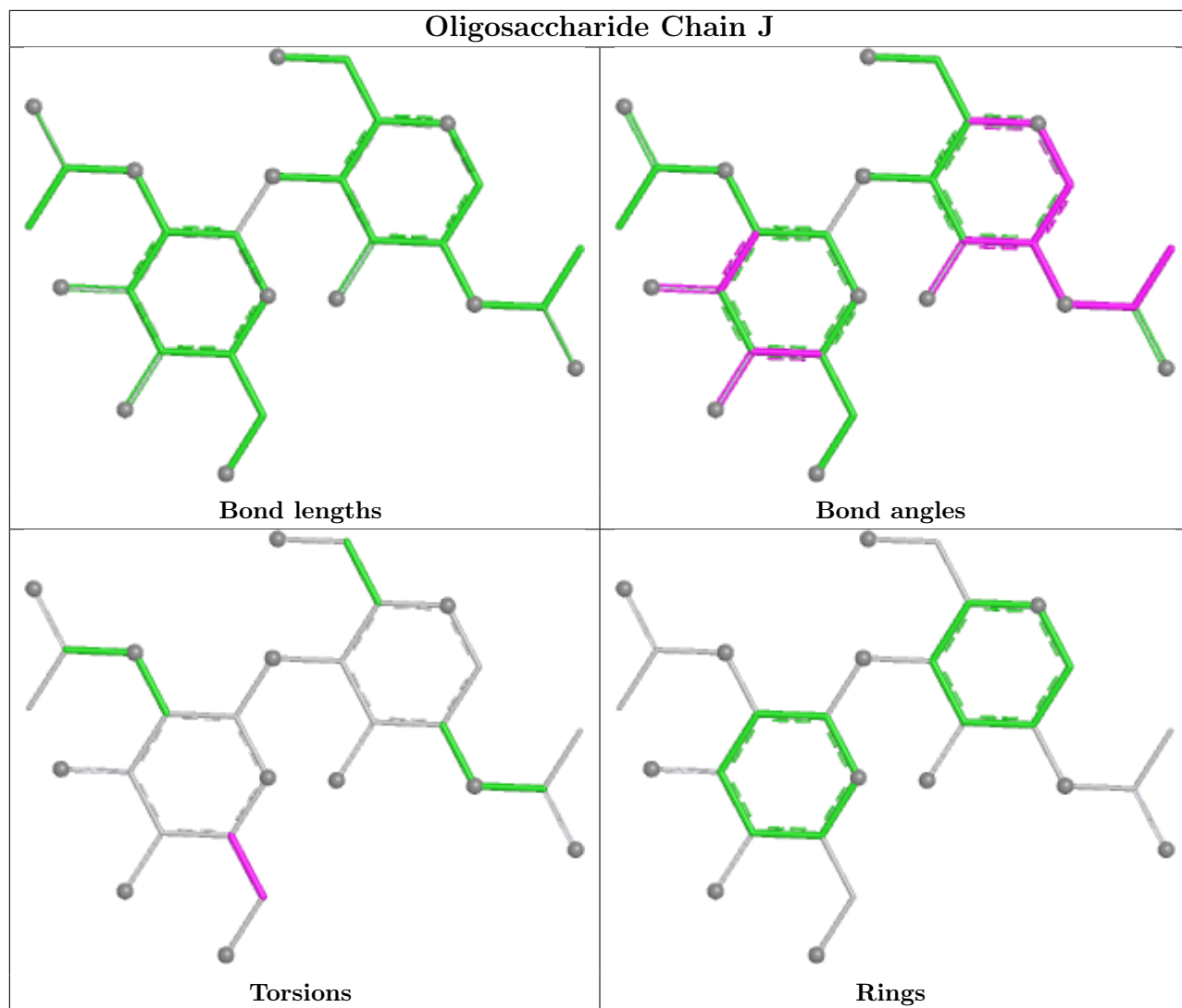
The following is a two-dimensional graphical depiction of Mogul quality analysis of bond lengths, bond angles, torsion angles, and ring geometry for oligosaccharide.

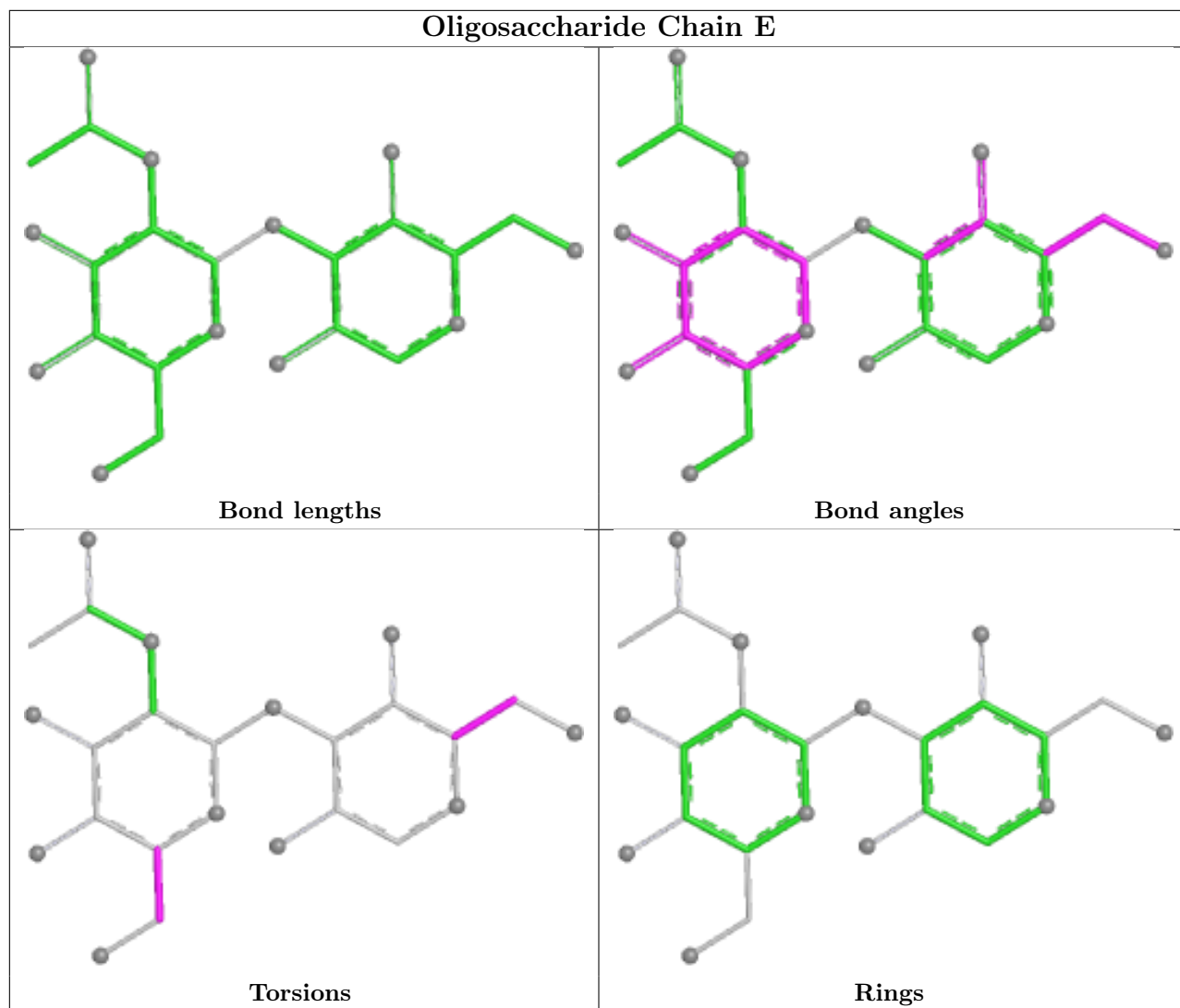


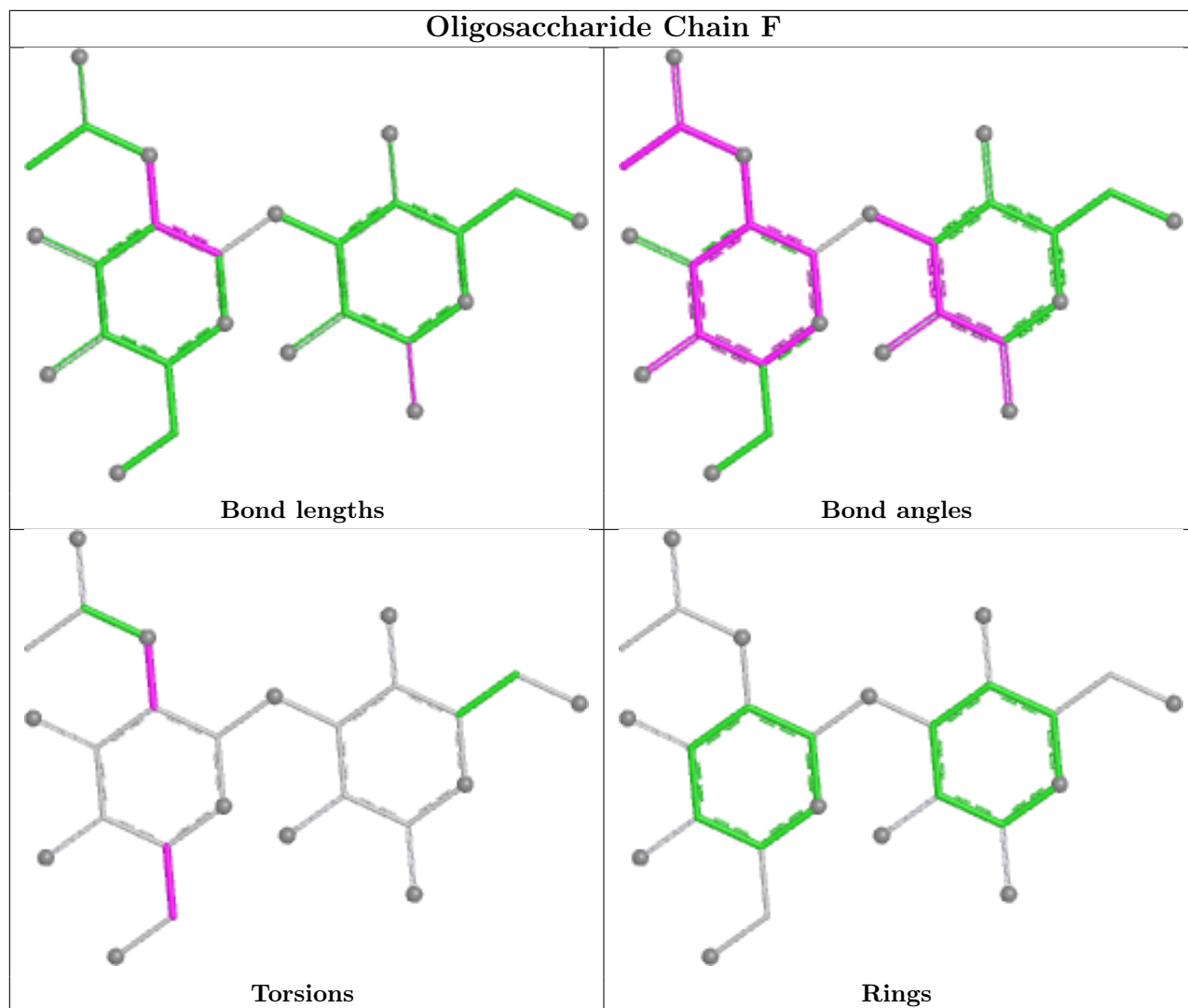












5.6 Ligand geometry [i](#)

10 ligands are modelled in this entry.

In the following table, the Counts columns list the number of bonds (or angles) for which Mogul statistics could be retrieved, the number of bonds (or angles) that are observed in the model and the number of bonds (or angles) that are defined in the Chemical Component Dictionary. The Link column lists molecule types, if any, to which the group is linked. The Z score for a bond length (or angle) is the number of standard deviations the observed value is removed from the expected value. A bond length (or angle) with $|Z| > 2$ is considered an outlier worth inspection. RMSZ is the root-mean-square of all Z scores of the bond lengths (or angles).

Mol	Type	Chain	Res	Link	Bond lengths			Bond angles		
					Counts	RMSZ	$\# Z > 2$	Counts	RMSZ	$\# Z > 2$
6	BKR	B	903	-	65,65,65	1.38	4 (6%)	101,101,101	1.40	15 (14%)
5	NAG	A	901	-	14,14,15	0.92	0	19,19,21	1.28	1 (5%)
7	XLS	B	904	-	8,9,9	0.76	0	10,11,11	2.17	6 (60%)

Mol	Type	Chain	Res	Link	Bond lengths			Bond angles		
					Counts	RMSZ	# Z > 2	Counts	RMSZ	# Z > 2
5	NAG	B	902	1	14,14,15	0.64	0	17,19,21	1.49	3 (17%)
5	NAG	A	906	1	14,14,15	0.79	0	17,19,21	1.07	1 (5%)
6	BKR	A	903	-	65,65,65	1.24	4 (6%)	101,101,101	1.42	16 (15%)
7	XLS	A	904	-	8,9,9	0.77	0	10,11,11	2.57	6 (60%)
5	NAG	A	905	-	15,15,15	1.22	2 (13%)	21,21,21	3.66	12 (57%)
5	NAG	B	901	-	14,14,15	1.03	1 (7%)	19,19,21	1.20	1 (5%)
5	NAG	A	902	1	14,14,15	0.76	0	17,19,21	1.94	4 (23%)

In the following table, the Chirals column lists the number of chiral outliers, the number of chiral centers analysed, the number of these observed in the model and the number defined in the Chemical Component Dictionary. Similar counts are reported in the Torsion and Rings columns. '-' means no outliers of that kind were identified.

Mol	Type	Chain	Res	Link	Chirals	Torsions	Rings
6	BKR	B	903	-	-	3/37/123/123	0/7/7/7
5	NAG	A	901	-	-	2/6/22/26	0/1/1/1
7	XLS	B	904	-	-	5/11/12/12	-
5	NAG	B	902	1	-	0/6/23/26	0/1/1/1
5	NAG	A	906	1	-	1/6/23/26	0/1/1/1
6	BKR	A	903	-	-	3/37/123/123	0/7/7/7
7	XLS	A	904	-	-	4/11/12/12	-
5	NAG	A	905	-	-	5/6/26/26	0/1/1/1
5	NAG	B	901	-	-	1/6/22/26	0/1/1/1
5	NAG	A	902	1	-	0/6/23/26	0/1/1/1

All (11) bond length outliers are listed below:

Mol	Chain	Res	Type	Atoms	Z	Observed(Å)	Ideal(Å)
6	B	903	BKR	O2-C3	5.52	1.45	1.34
6	A	903	BKR	O2-C3	5.40	1.45	1.34
6	B	903	BKR	O11-C27	5.30	1.46	1.34
6	A	903	BKR	O11-C27	3.47	1.42	1.34
6	B	903	BKR	O4-C12	3.31	1.42	1.35
6	A	903	BKR	O4-C12	2.82	1.41	1.35
5	A	905	NAG	O1-C1	2.82	1.48	1.39
5	B	901	NAG	C3-C2	-2.72	1.50	1.53
5	A	905	NAG	C1-C2	2.67	1.56	1.52
6	A	903	BKR	C8-C9	2.04	1.42	1.38
6	B	903	BKR	C7-C8	2.02	1.42	1.38

All (65) bond angle outliers are listed below:

Mol	Chain	Res	Type	Atoms	Z	Observed(°)	Ideal(°)
5	A	905	NAG	C8-C7-N2	8.72	130.58	116.12
5	A	905	NAG	C1-O5-C5	5.64	124.56	113.65
5	A	905	NAG	C2-N2-C7	5.52	136.04	123.11
5	A	905	NAG	O7-C7-C8	-5.46	112.33	122.05
5	A	905	NAG	O5-C1-C2	5.43	114.97	109.52
5	A	902	NAG	C1-C2-N2	-4.84	102.81	110.43
7	A	904	XLS	O4-C4-C5	4.73	119.79	109.03
5	A	905	NAG	C1-C2-N2	4.57	116.02	110.73
5	A	902	NAG	C1-O5-C5	3.97	117.51	112.19
6	A	903	BKR	O9-C21-C24	-3.95	105.10	111.48
5	A	901	NAG	O5-C1-C2	-3.92	105.57	109.52
6	B	903	BKR	O4-C12-C13	3.63	116.82	110.67
6	B	903	BKR	O9-C21-C20	-3.57	103.56	109.51
6	B	903	BKR	O4-C12-O5	-3.54	117.43	123.61
5	A	905	NAG	O1-C1-C2	3.54	116.57	109.22
7	B	904	XLS	O4-C4-C5	3.43	116.83	109.03
6	B	903	BKR	C45-C24-C25	-3.42	115.00	119.60
7	A	904	XLS	C5-C4-C3	3.34	118.97	112.17
6	A	903	BKR	C10-C18-C20	-3.28	110.89	116.30
6	A	903	BKR	O4-C12-O5	-3.16	118.11	123.61
5	B	902	NAG	C1-O5-C5	3.13	116.38	112.19
5	A	905	NAG	O1-C1-O5	-3.13	101.11	110.41
7	A	904	XLS	O2-C2-C3	-3.10	102.20	109.46
6	B	903	BKR	C45-C1-C2	3.05	115.29	111.93
5	A	905	NAG	O7-C7-N2	-2.84	116.97	121.98
6	A	903	BKR	C45-C24-C21	2.80	122.45	119.52
6	A	903	BKR	C1-C2-C10	2.80	122.38	118.19
7	A	904	XLS	C4-C3-C2	2.79	119.35	112.70
5	A	905	NAG	O5-C5-C6	2.75	113.25	106.44
7	B	904	XLS	C3-C2-C1	2.68	119.20	111.03
6	A	903	BKR	C1-C45-C24	-2.68	102.74	105.26
6	A	903	BKR	C43-C1-C2	-2.67	106.95	111.67
6	A	903	BKR	O11-C27-O12	-2.64	119.18	123.95
6	B	903	BKR	O2-C2-C1	-2.61	99.33	104.74
6	B	903	BKR	O2-C3-C4	2.59	116.07	111.90
6	A	903	BKR	C45-C1-C2	2.57	114.75	111.93
5	A	905	NAG	C1-C2-C3	2.48	113.93	110.54
5	A	905	NAG	C4-C3-C2	2.48	114.02	110.40
6	B	903	BKR	O14-C30-C31	-2.45	116.04	120.90
6	B	903	BKR	C2-O2-C3	2.45	122.27	117.80
5	A	902	NAG	O6-C6-C5	-2.44	103.01	111.33
7	A	904	XLS	O4-C4-C3	-2.39	103.67	109.25

Continued on next page...

Continued from previous page...

Mol	Chain	Res	Type	Atoms	Z	Observed(°)	Ideal(°)
6	B	903	BKR	C28-C29-N1	-2.37	103.43	109.27
6	B	903	BKR	C32-C31-C36	2.37	121.58	118.57
7	A	904	XLS	C3-C2-C1	2.35	118.18	111.03
6	B	903	BKR	O11-C27-C28	2.27	114.73	111.13
7	B	904	XLS	C5-C4-C3	2.27	116.80	112.17
7	B	904	XLS	O2-C2-C3	-2.26	104.18	109.46
6	A	903	BKR	C14-C11-C10	-2.24	116.86	120.32
6	A	903	BKR	C7-C8-C9	-2.21	117.51	120.24
5	B	901	NAG	O1-C1-C2	-2.20	104.64	109.22
5	B	902	NAG	O4-C4-C5	-2.20	103.91	109.32
6	A	903	BKR	C21-C24-C25	-2.18	117.36	120.65
6	A	903	BKR	O4-C11-C14	2.17	112.74	108.13
6	A	903	BKR	O4-C12-C13	2.17	114.34	110.67
7	B	904	XLS	O2-C2-C1	-2.16	105.56	110.48
6	B	903	BKR	O2-C2-C10	2.15	112.06	108.17
5	A	902	NAG	C2-N2-C7	2.14	125.76	122.90
6	B	903	BKR	C14-C11-C10	-2.12	117.04	120.32
6	A	903	BKR	O2-C3-C4	2.12	115.30	111.90
5	B	902	NAG	O5-C1-C2	-2.11	108.02	111.29
6	A	903	BKR	C6-C5-C4	-2.10	118.30	120.36
6	B	903	BKR	C21-C24-C25	2.07	123.79	120.65
5	A	906	NAG	O7-C7-C8	-2.07	118.36	122.05
7	B	904	XLS	O5-C5-C4	2.02	115.39	111.16

There are no chirality outliers.

All (24) torsion outliers are listed below:

Mol	Chain	Res	Type	Atoms
5	A	905	NAG	C8-C7-N2-C2
5	A	905	NAG	O7-C7-N2-C2
7	A	904	XLS	O1-C1-C2-C3
7	A	904	XLS	C2-C3-C4-C5
7	B	904	XLS	O1-C1-C2-C3
7	B	904	XLS	C2-C3-C4-C5
7	B	904	XLS	O3-C3-C4-C5
7	A	904	XLS	O3-C3-C4-C5
5	A	905	NAG	C4-C5-C6-O6
5	A	905	NAG	O5-C5-C6-O6
7	B	904	XLS	C2-C3-C4-O4
7	A	904	XLS	C2-C3-C4-O4
5	A	905	NAG	C3-C2-N2-C7
5	B	901	NAG	C4-C5-C6-O6

Continued on next page...

Continued from previous page...

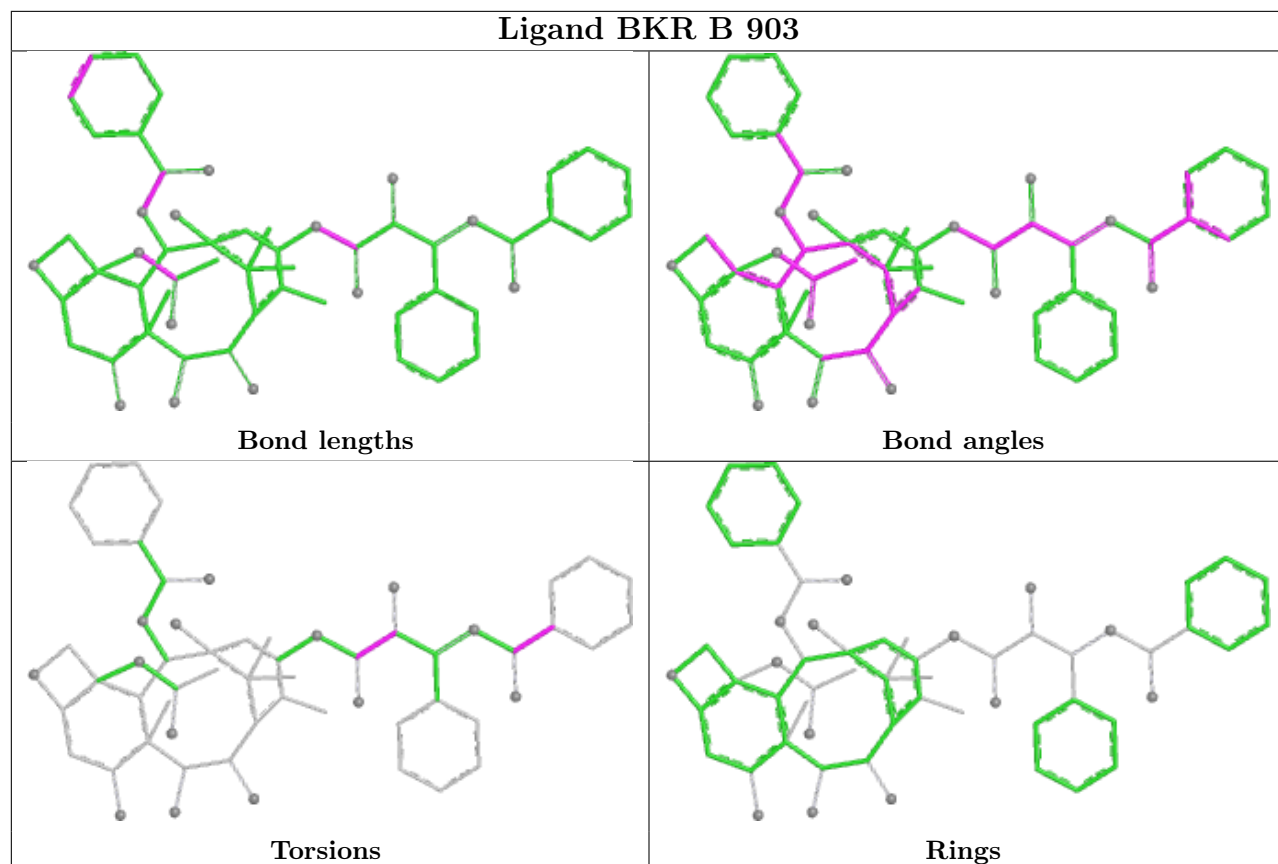
Mol	Chain	Res	Type	Atoms
6	B	903	BKR	N1-C30-C31-C32
5	A	906	NAG	C4-C5-C6-O6
6	B	903	BKR	O11-C27-C28-O13
7	B	904	XLS	O3-C3-C4-O4
6	A	903	BKR	O12-C27-C28-O13
6	B	903	BKR	O12-C27-C28-O13
6	A	903	BKR	O11-C27-C28-O13
5	A	901	NAG	C1-C2-N2-C7
5	A	901	NAG	C4-C5-C6-O6
6	A	903	BKR	O11-C27-C28-C29

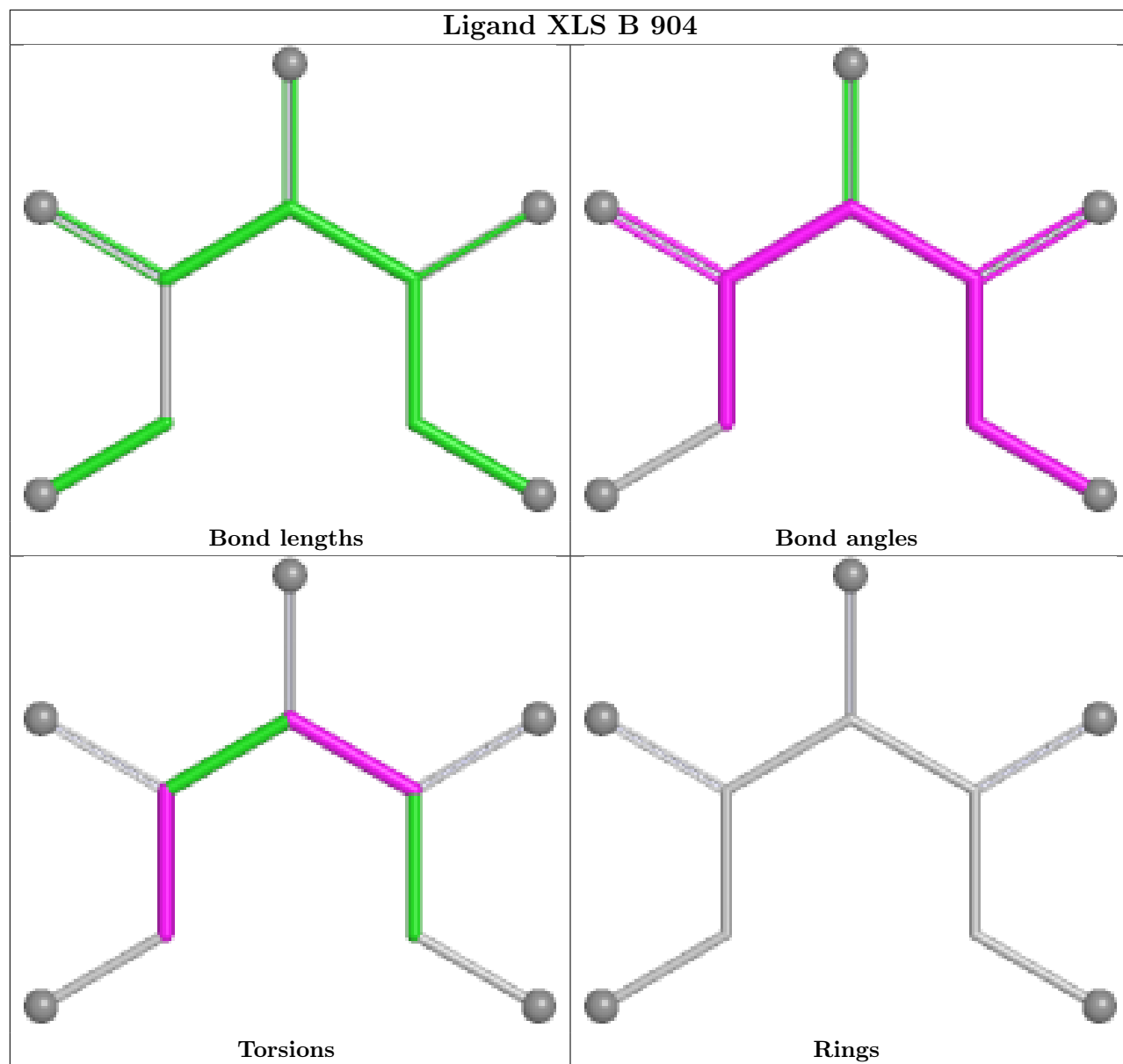
There are no ring outliers.

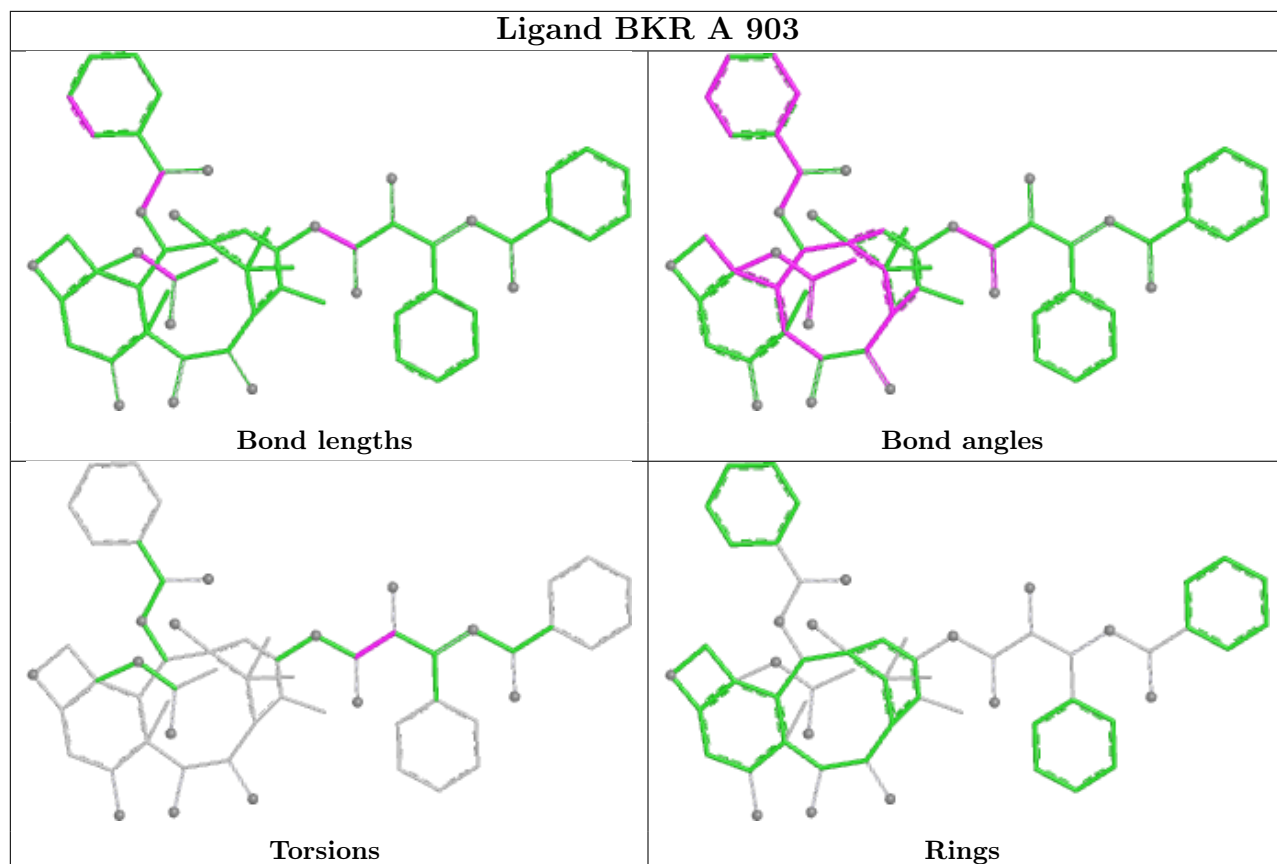
6 monomers are involved in 13 short contacts:

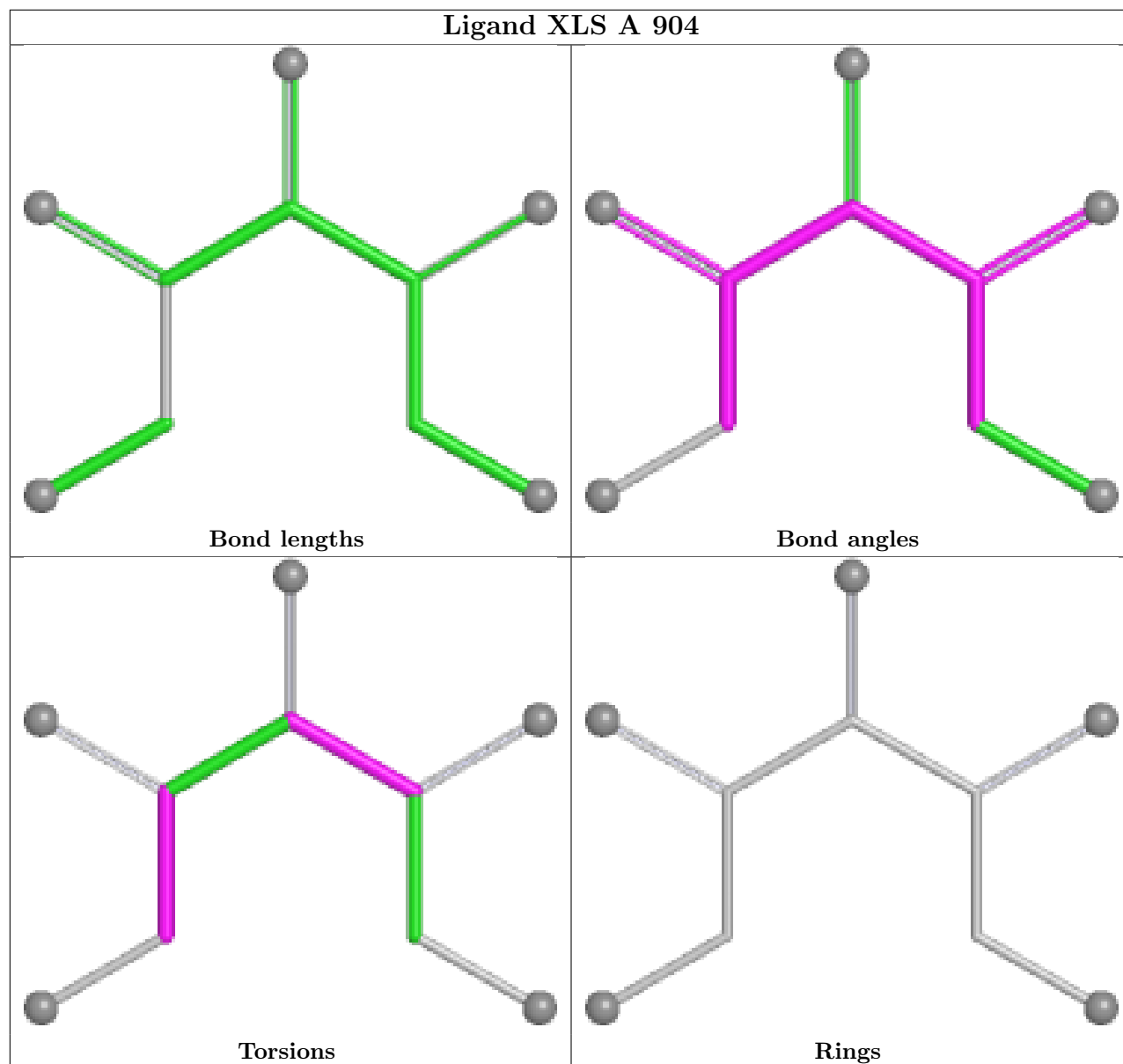
Mol	Chain	Res	Type	Clashes	Symm-Clashes
6	B	903	BKR	4	0
5	A	901	NAG	2	0
7	B	904	XLS	2	0
6	A	903	BKR	1	0
7	A	904	XLS	2	0
5	B	901	NAG	2	0

The following is a two-dimensional graphical depiction of Mogul quality analysis of bond lengths, bond angles, torsion angles, and ring geometry for all instances of the Ligand of Interest. In addition, ligands with molecular weight > 250 and outliers as shown on the validation Tables will also be included. For torsion angles, if less than 5% of the Mogul distribution of torsion angles is within 10 degrees of the torsion angle in question, then that torsion angle is considered an outlier. Any bond that is central to one or more torsion angles identified as an outlier by Mogul will be highlighted in the graph. For rings, the root-mean-square deviation (RMSD) between the ring in question and similar rings identified by Mogul is calculated over all ring torsion angles. If the average RMSD is greater than 60 degrees and the minimal RMSD between the ring in question and any Mogul-identified rings is also greater than 60 degrees, then that ring is considered an outlier. The outliers are highlighted in purple. The color gray indicates Mogul did not find sufficient equivalents in the CSD to analyse the geometry.









5.7 Other polymers [i](#)

There are no such residues in this entry.

5.8 Polymer linkage issues [i](#)

There are no chain breaks in this entry.

6 Fit of model and data

6.1 Protein, DNA and RNA chains

In the following table, the column labelled ‘#RSRZ > 2’ contains the number (and percentage) of RSRZ outliers, followed by percent RSRZ outliers for the chain as percentile scores relative to all X-ray entries and entries of similar resolution. The OWAB column contains the minimum, median, 95th percentile and maximum values of the occupancy-weighted average B-factor per residue. The column labelled ‘Q < 0.9’ lists the number of (and percentage) of residues with an average occupancy less than 0.9.

Mol	Chain	Analysed	<RSRZ>	#RSRZ>2	OWAB(Å ²)	Q<0.9
1	A	756/803 (94%)	0.29	11 (1%) 72 78	21, 33, 47, 75	0
1	B	757/803 (94%)	0.38	15 (1%) 65 71	24, 34, 48, 75	0
All	All	1513/1606 (94%)	0.33	26 (1%) 69 75	21, 33, 47, 75	0

All (26) RSRZ outliers are listed below:

Mol	Chain	Res	Type	RSRZ
1	B	683	TYR	3.5
1	B	49	TRP	3.5
1	A	683	TYR	3.3
1	B	699	THR	3.3
1	B	51	ALA	2.8
1	A	801	TRP	2.7
1	A	51	ALA	2.6
1	A	699	THR	2.6
1	B	47	THR	2.6
1	A	49	TRP	2.6
1	A	416	THR	2.3
1	A	348	ASP	2.3
1	B	348	ASP	2.3
1	B	682	ASP	2.3
1	B	694	ALA	2.3
1	A	571	TRP	2.2
1	B	774	ASP	2.2
1	A	803	PRO	2.2
1	B	695	GLU	2.1
1	A	48	GLN	2.1
1	B	696	TRP	2.1
1	B	396	PRO	2.1
1	B	329	GLY	2.1
1	A	758	VAL	2.0

Continued on next page...

Continued from previous page...

Mol	Chain	Res	Type	RSRZ
1	B	345	VAL	2.0
1	B	627	THR	2.0

6.2 Non-standard residues in protein, DNA, RNA chains [i](#)

There are no non-standard protein/DNA/RNA residues in this entry.

6.3 Carbohydrates [i](#)

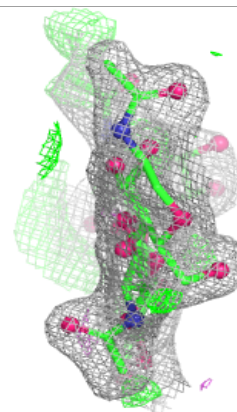
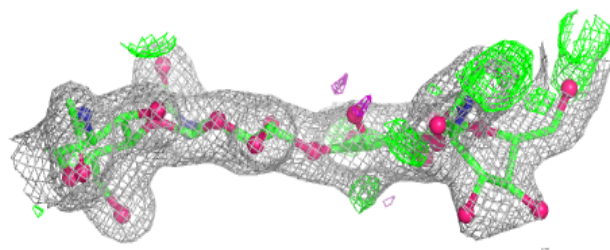
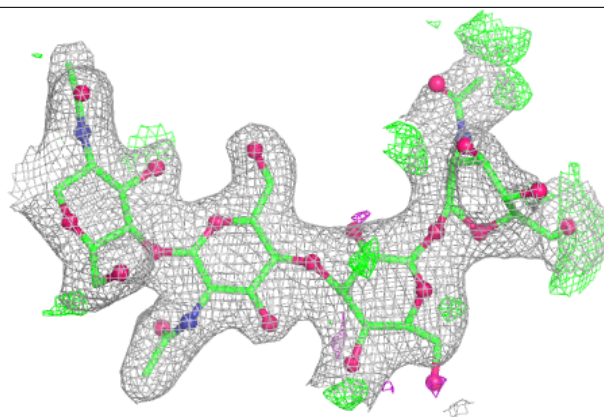
In the following table, the Atoms column lists the number of modelled atoms in the group and the number defined in the chemical component dictionary. The B-factors column lists the minimum, median, 95th percentile and maximum values of B factors of atoms in the group. The column labelled 'Q<0.9' lists the number of atoms with occupancy less than 0.9.

Mol	Type	Chain	Res	Atoms	RSCC	RSR	B-factors(Å ²)	Q<0.9
2	NAG	C	4	14/15	0.54	0.20	51,61,67,80	0
4	NAG	F	2	14/15	0.76	0.17	43,54,59,61	0
3	NAG	I	2	14/15	0.82	0.13	42,51,61,64	0
4	NAG	E	2	14/15	0.83	0.16	51,64,82,85	0
4	MAN	E	1	11/12	0.83	0.11	43,50,55,55	0
3	NAG	J	2	14/15	0.85	0.12	45,52,58,59	0
3	NAG	D	2	14/15	0.87	0.10	33,37,41,44	0
2	MAN	C	3	11/12	0.87	0.16	40,45,62,70	0
4	MAN	F	1	12/12	0.88	0.10	40,43,47,48	0
3	NAG	G	2	14/15	0.88	0.10	33,41,48,50	0
3	NAG	H	2	14/15	0.91	0.09	36,38,48,54	0
2	NAG	C	1	14/15	0.92	0.09	35,39,42,42	0
3	NAG	J	1	14/15	0.94	0.08	34,35,39,40	0
2	NAG	C	2	14/15	0.94	0.08	34,38,43,47	0
3	NAG	I	1	14/15	0.95	0.07	33,35,37,39	0
3	NAG	D	1	14/15	0.95	0.07	32,37,43,46	0
3	NAG	H	1	14/15	0.95	0.08	30,32,35,38	0
3	NAG	G	1	14/15	0.95	0.07	27,30,34,38	0

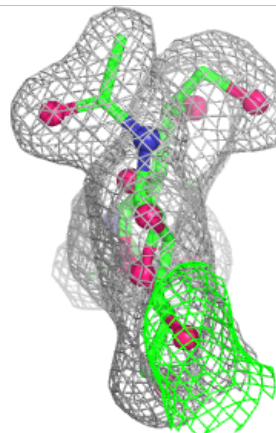
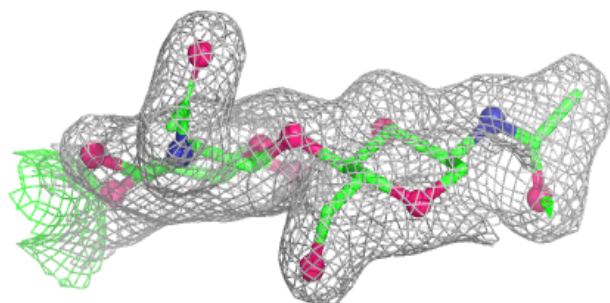
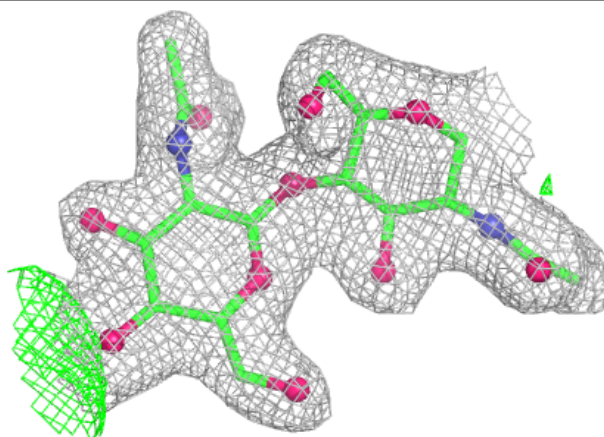
The following is a graphical depiction of the model fit to experimental electron density for oligosaccharide. Each fit is shown from different orientation to approximate a three-dimensional view.

Electron density around Chain C:

$2mF_o-DF_c$ (at 0.7 rmsd) in gray
 mF_o-DF_c (at 3 rmsd) in purple (negative)
and green (positive)

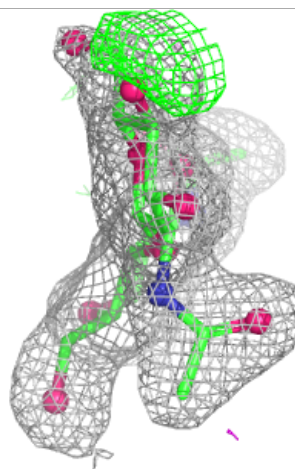
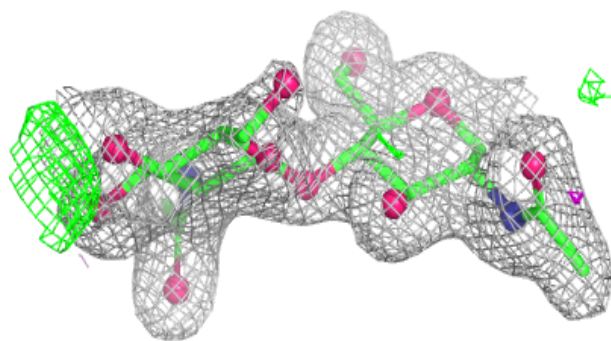
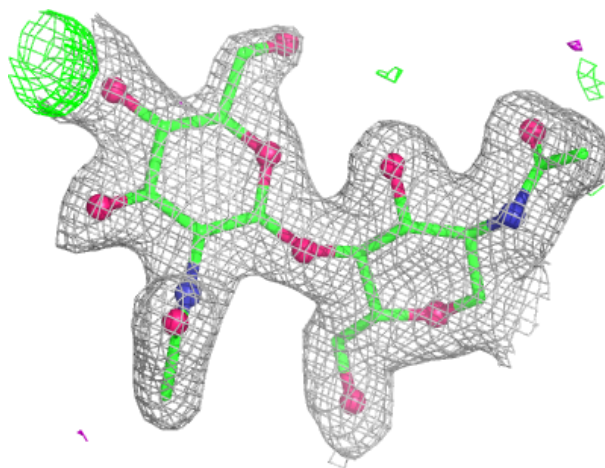
**Electron density around Chain D:**

$2mF_o-DF_c$ (at 0.7 rmsd) in gray
 mF_o-DF_c (at 3 rmsd) in purple (negative)
and green (positive)



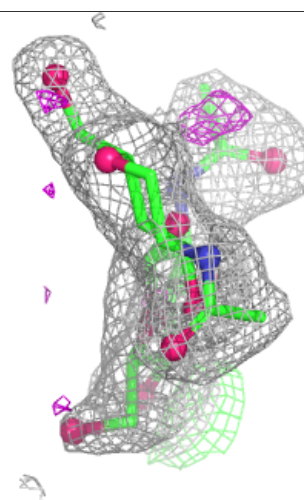
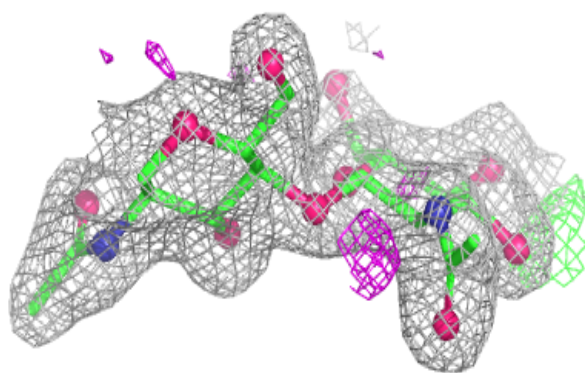
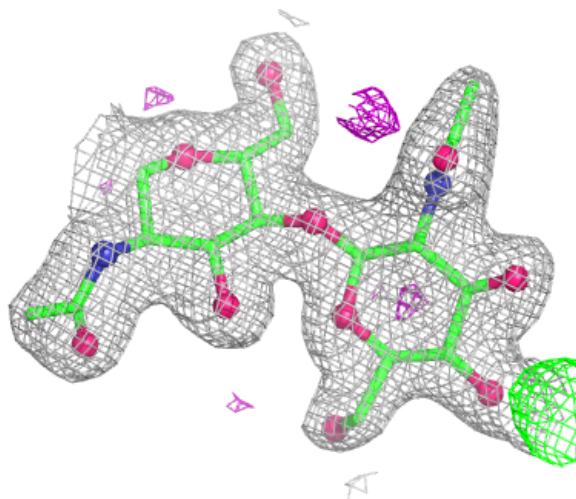
Electron density around Chain G:

$2mF_o-DF_c$ (at 0.7 rmsd) in gray
 mF_o-DF_c (at 3 rmsd) in purple (negative)
and green (positive)



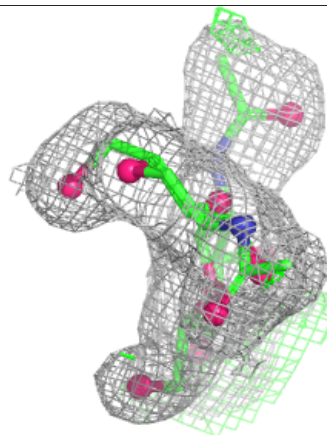
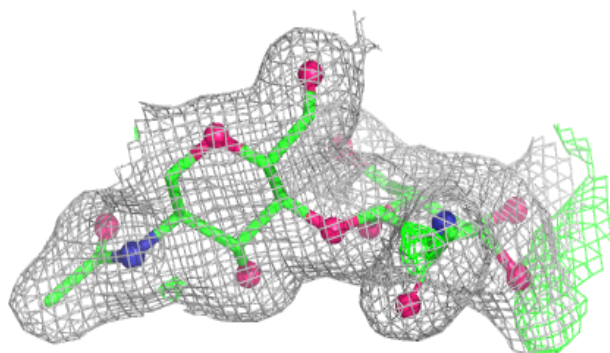
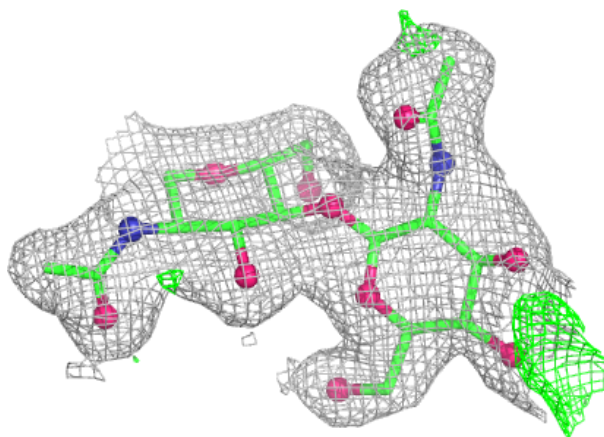
Electron density around Chain H:

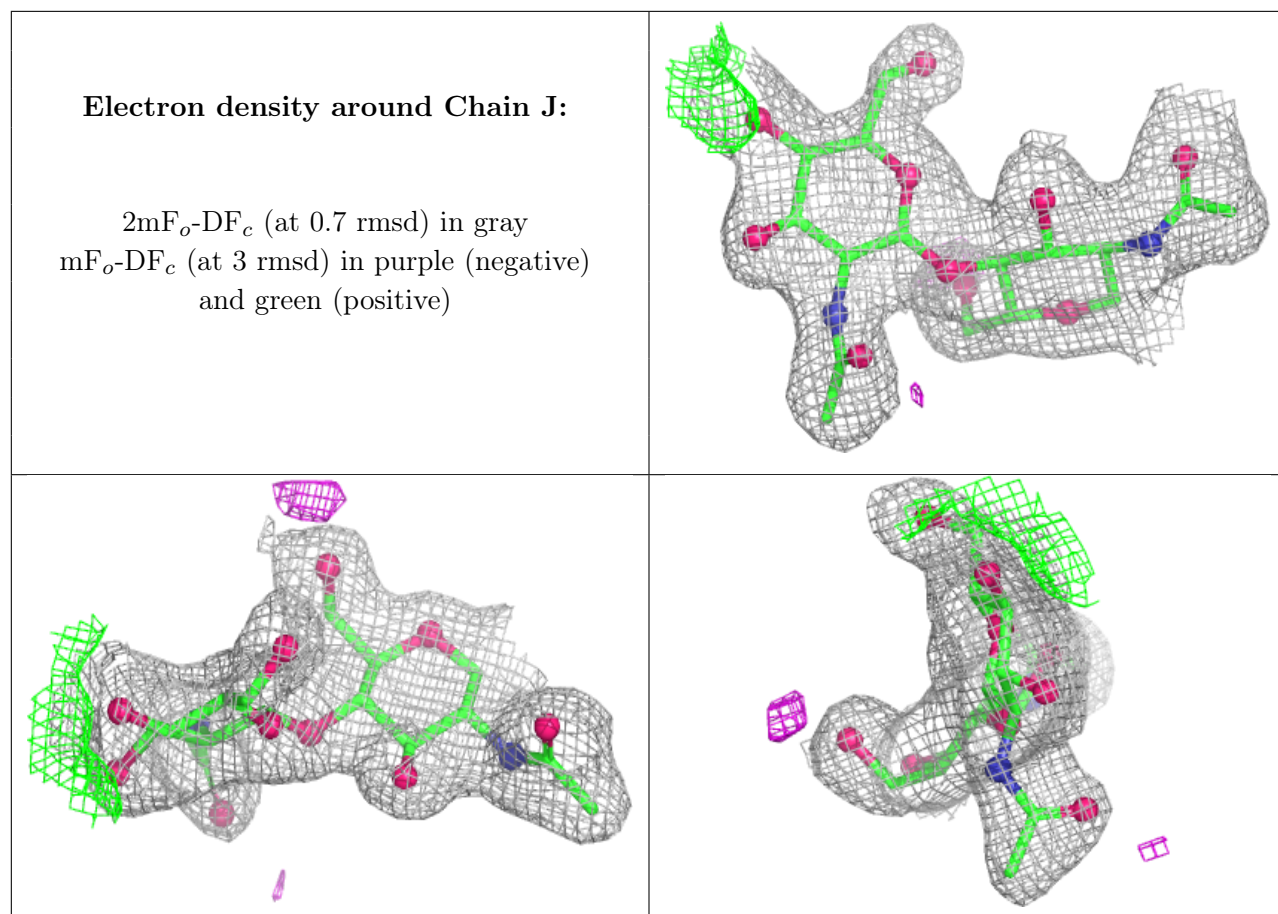
$2mF_o-DF_c$ (at 0.7 rmsd) in gray
 mF_o-DF_c (at 3 rmsd) in purple (negative)
and green (positive)



Electron density around Chain I:

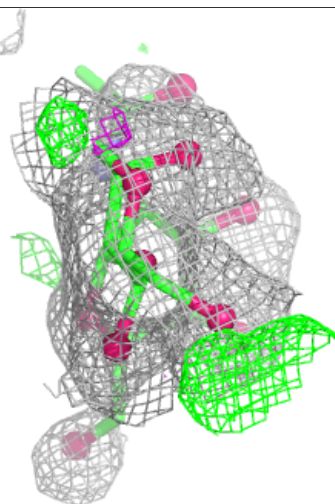
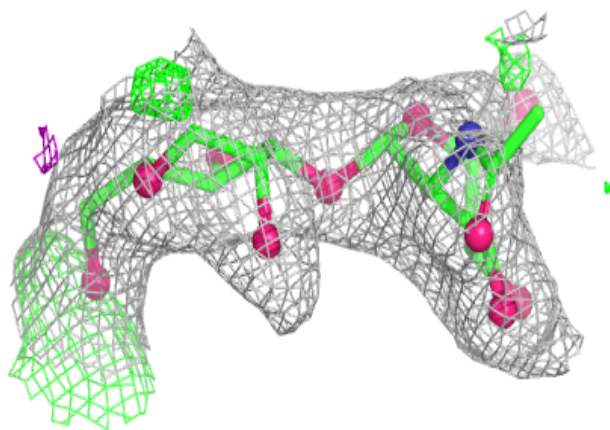
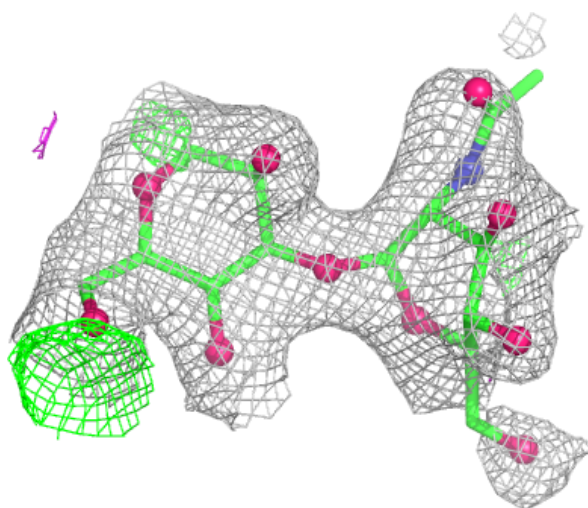
$2mF_o-DF_c$ (at 0.7 rmsd) in gray
 mF_o-DF_c (at 3 rmsd) in purple (negative)
and green (positive)

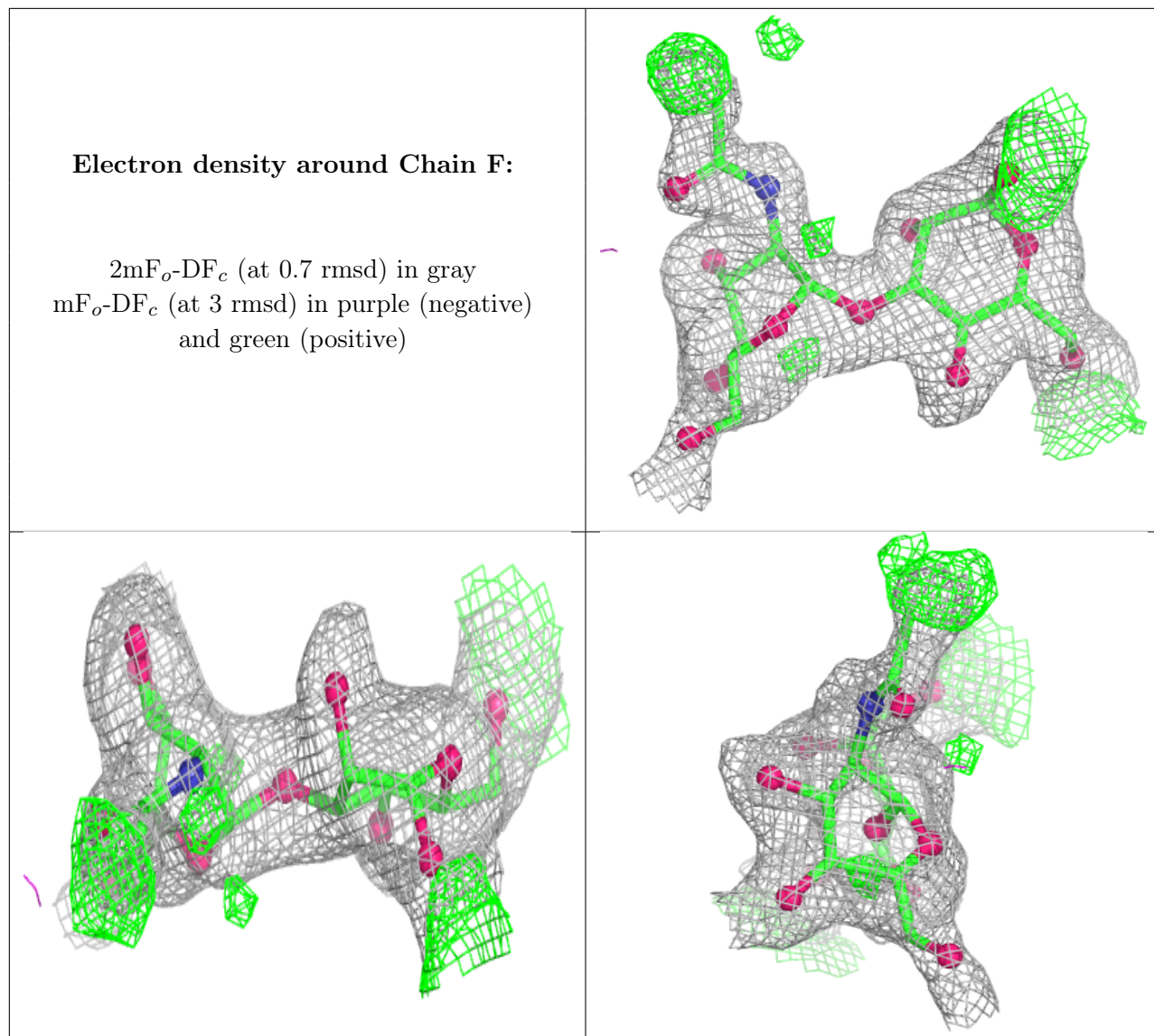




Electron density around Chain E:

$2mF_o-DF_c$ (at 0.7 rmsd) in gray
 mF_o-DF_c (at 3 rmsd) in purple (negative)
and green (positive)





6.4 Ligands [i](#)

In the following table, the Atoms column lists the number of modelled atoms in the group and the number defined in the chemical component dictionary. The B-factors column lists the minimum, median, 95th percentile and maximum values of B factors of atoms in the group. The column labelled 'Q < 0.9' lists the number of atoms with occupancy less than 0.9.

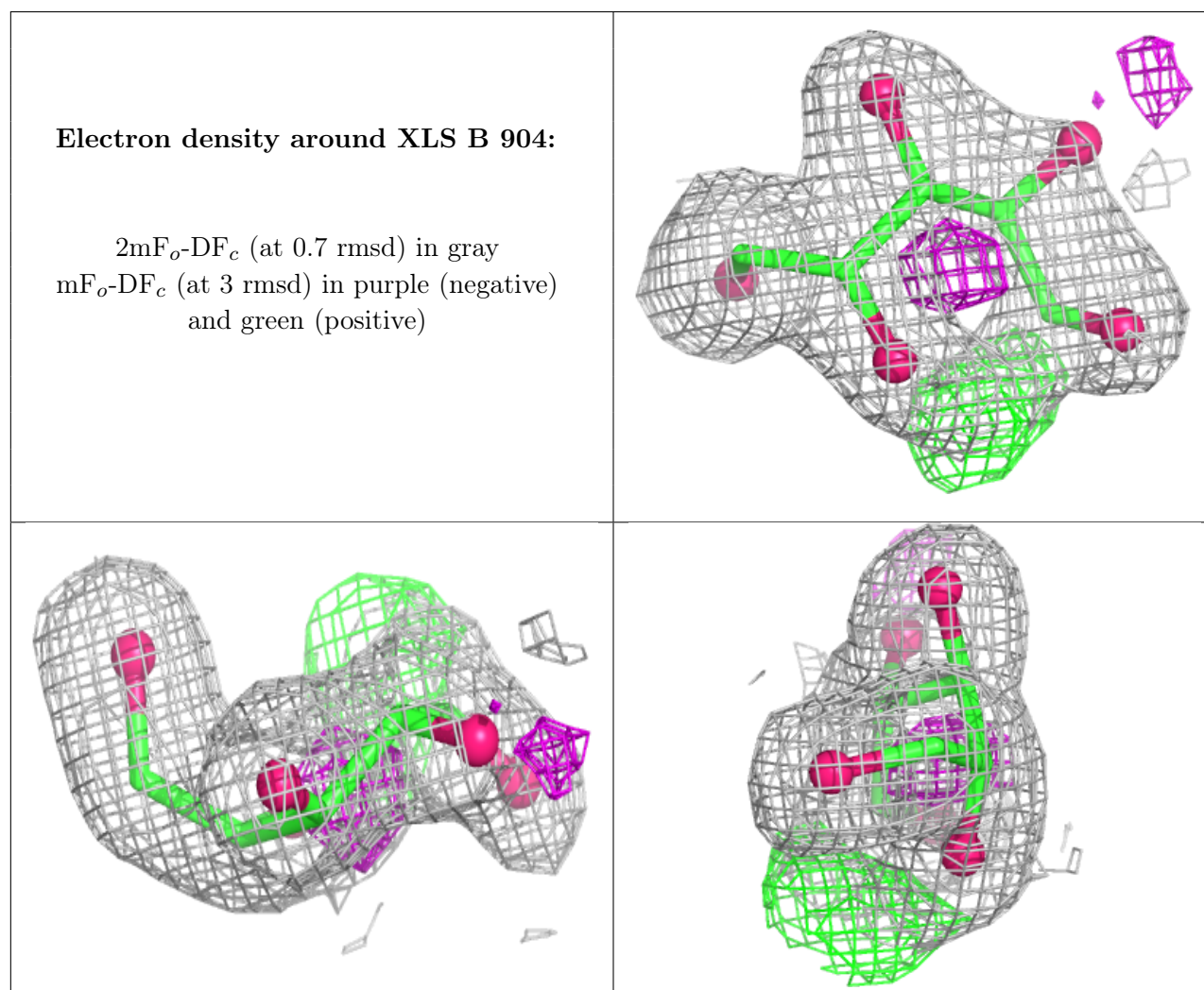
Mol	Type	Chain	Res	Atoms	RSCC	RSR	B-factors(Å ²)	Q<0.9
5	NAG	A	905	15/15	0.70	0.18	35,53,59,67	0
5	NAG	A	901	14/15	0.81	0.15	67,72,77,79	0
7	XLS	B	904	10/10	0.82	0.14	30,38,57,59	0
5	NAG	B	901	14/15	0.85	0.12	57,67,79,81	0
6	BKR	B	903	59/59	0.90	0.10	34,41,45,47	0
5	NAG	A	906	14/15	0.90	0.09	37,43,49,51	0

Continued on next page...

Continued from previous page...

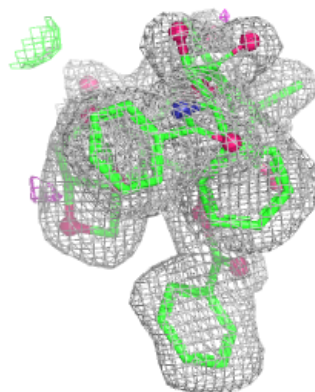
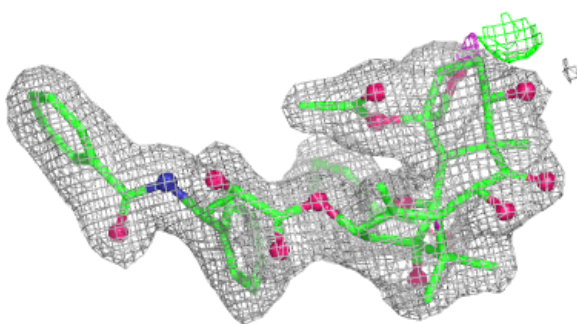
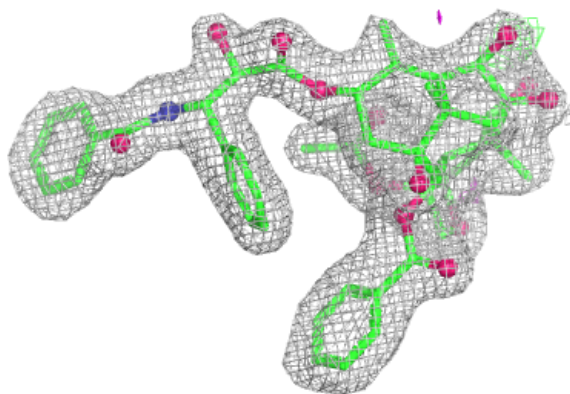
Mol	Type	Chain	Res	Atoms	RSCC	RSR	B-factors(\AA^2)	Q<0.9
6	BKR	A	903	59/59	0.91	0.10	32,40,44,48	0
7	XLS	A	904	10/10	0.92	0.09	29,35,49,49	0
5	NAG	B	902	14/15	0.93	0.07	38,41,45,49	0
5	NAG	A	902	14/15	0.94	0.07	33,37,43,44	0

The following is a graphical depiction of the model fit to experimental electron density of all instances of the Ligand of Interest. In addition, ligands with molecular weight > 250 and outliers as shown on the geometry validation Tables will also be included. Each fit is shown from different orientation to approximate a three-dimensional view.

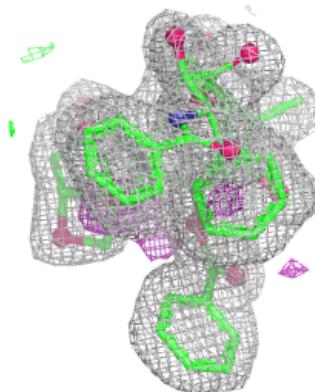
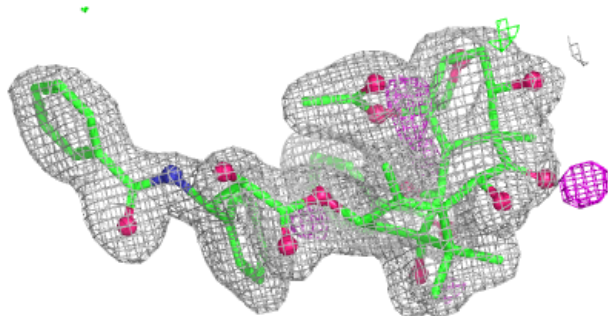
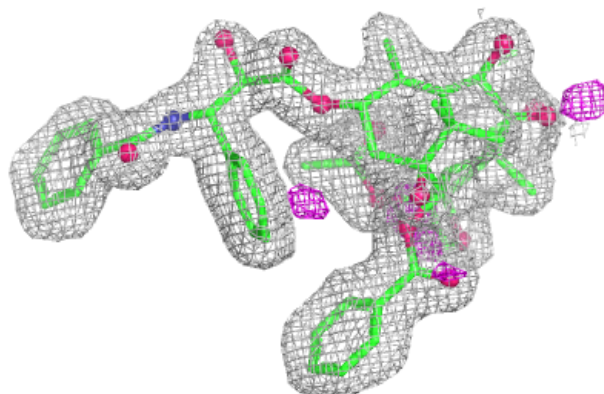


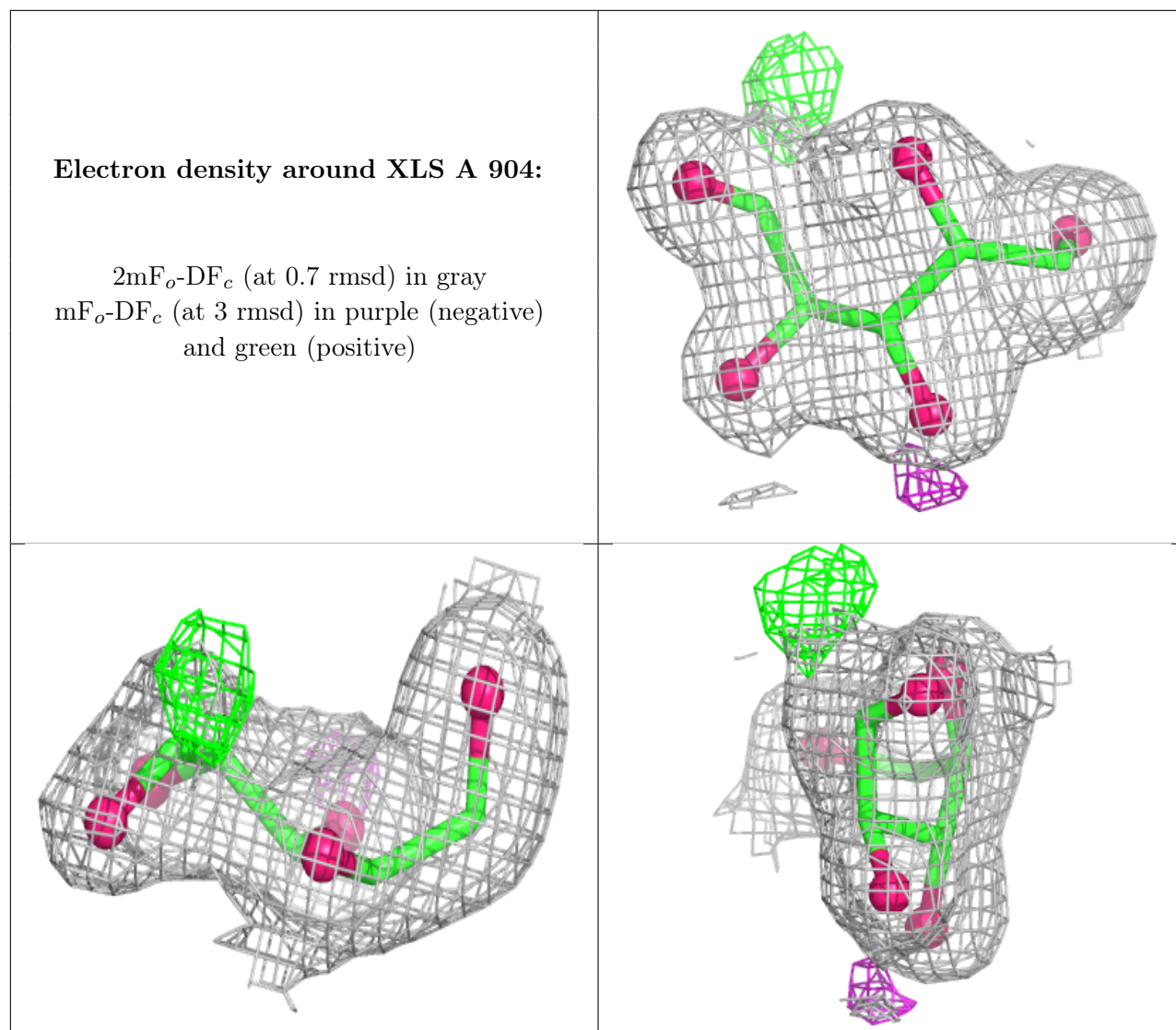
Electron density around BKR B 903:

$2mF_o-DF_c$ (at 0.7 rmsd) in gray
 mF_o-DF_c (at 3 rmsd) in purple (negative)
and green (positive)

**Electron density around BKR A 903:**

$2mF_o-DF_c$ (at 0.7 rmsd) in gray
 mF_o-DF_c (at 3 rmsd) in purple (negative)
and green (positive)





6.5 Other polymers [i](#)

There are no such residues in this entry.