



# Full wwPDB X-ray Structure Validation Report ⓘ

Feb 24, 2026 – 03:11 pm GMT

PDB ID : 8BL1 / pdb\_00008bl1  
Title : Human Sirt6 in complex with the inhibitor S6039 and ADP-ribose  
Authors : You, W.; Steegborn, C.  
Deposited on : 2022-11-09  
Resolution : 2.06 Å(reported)

This is a Full wwPDB X-ray Structure Validation Report for a publicly released PDB entry.

We welcome your comments at [validation@mail.wwpdb.org](mailto:validation@mail.wwpdb.org)

A user guide is available at

<https://www.wwpdb.org/validation/2017/XrayValidationReportHelp>

with specific help available everywhere you see the ⓘ symbol.

The types of validation reports are described at

<http://www.wwpdb.org/validation/2017/FAQs#types>.

---

The following versions of software and data (see [references ⓘ](#)) were used in the production of this report:

MolProbity : 4-5-2 with Phenix2.0  
Mogul : 1.8.4, CSD as541be (2020)  
Xtriage (Phenix) : 2.0  
EDS : 3.0  
buster-report : 1.1.7 (2018)  
Percentile statistics : 20231227.v01 (using entries in the PDB archive December 27th 2023)  
CCP4 : 9.0.010 (Gargrove)  
Density-Fitness : 1.0.12  
Ideal geometry (proteins) : Engh & Huber (2001)  
Ideal geometry (DNA, RNA) : Parkinson et al. (1996)  
Validation Pipeline (wwPDB-VP) : 2.48.1

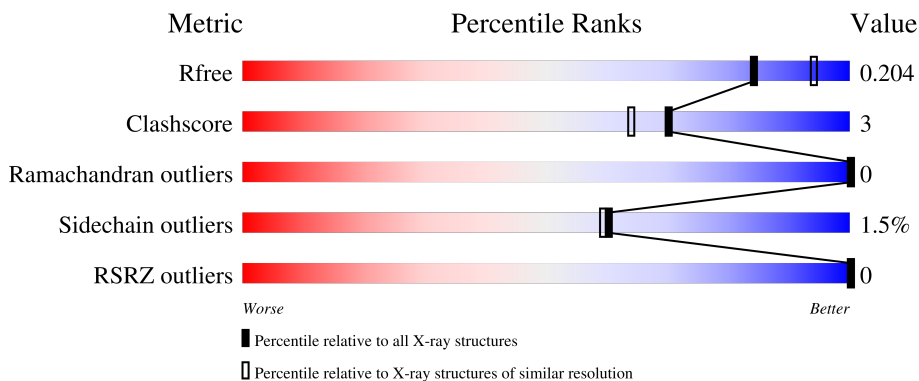
# 1 Overall quality at a glance

The following experimental techniques were used to determine the structure:

*X-RAY DIFFRACTION*

The reported resolution of this entry is 2.06 Å.

Percentile scores (ranging between 0-100) for global validation metrics of the entry are shown in the following graphic. The table shows the number of entries on which the scores are based.



Metric	Whole archive (#Entries)	Similar resolution (#Entries, resolution range(Å))
$R_{free}$	164625	3436 (2.08-2.04)
Clashscore	180529	3661 (2.08-2.04)
Ramachandran outliers	177936	3649 (2.08-2.04)
Sidechain outliers	177891	3649 (2.08-2.04)
RSRZ outliers	164620	3436 (2.08-2.04)

The table below summarises the geometric issues observed across the polymeric chains and their fit to the electron density. The red, orange, yellow and green segments of the lower bar indicate the fraction of residues that contain outliers for  $\geq 3$ , 2, 1 and 0 types of geometric quality criteria respectively. A grey segment represents the fraction of residues that are not modelled. The numeric value for each fraction is indicated below the corresponding segment, with a dot representing fractions  $\leq 5\%$ . The upper red bar (where present) indicates the fraction of residues that have poor fit to the electron density. The numeric value is given above the bar.

Mol	Chain	Length	Quality of chain
1	A	302	 81% 11% 7%
1	B	302	 82% 9% 8%

## 2 Entry composition i

There are 8 unique types of molecules in this entry. The entry contains 4634 atoms, of which 0 are hydrogens and 0 are deuteriums.

In the tables below, the ZeroOcc column contains the number of atoms modelled with zero occupancy, the AltConf column contains the number of residues with at least one atom in alternate conformation and the Trace column contains the number of residues modelled with at most 2 atoms.

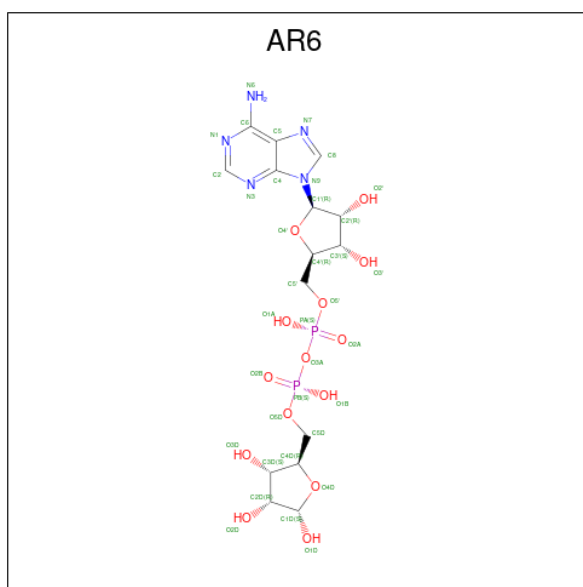
- Molecule 1 is a protein called NAD-dependent protein deacetylase sirtuin-6.

Mol	Chain	Residues	Atoms					ZeroOcc	AltConf	Trace
			Total	C	N	O	S			
1	A	282	Total	C	N	O	S	0	0	0
			2202	1386	404	401	11			
1	B	277	Total	C	N	O	S	0	0	0
			2158	1358	396	393	11			

There are 12 discrepancies between the modelled and reference sequences:

Chain	Residue	Modelled	Actual	Comment	Reference
A	7	GLY	-	expression tag	UNP Q8N6T7
A	8	ILE	-	expression tag	UNP Q8N6T7
A	9	ASP	-	expression tag	UNP Q8N6T7
A	10	PRO	-	expression tag	UNP Q8N6T7
A	11	PHE	-	expression tag	UNP Q8N6T7
A	12	THR	-	expression tag	UNP Q8N6T7
B	7	GLY	-	expression tag	UNP Q8N6T7
B	8	ILE	-	expression tag	UNP Q8N6T7
B	9	ASP	-	expression tag	UNP Q8N6T7
B	10	PRO	-	expression tag	UNP Q8N6T7
B	11	PHE	-	expression tag	UNP Q8N6T7
B	12	THR	-	expression tag	UNP Q8N6T7

- Molecule 2 is [(2R,3S,4R,5R)-5-(6-AMINOPURIN-9-YL)-3,4-DIHYDROXY-OXOLA N-2-YL]METHYL[HYDROXY-[(2R,3S,4R,5S)-3,4,5-TRIHYDROXYOXOLAN-2-Y L]METHOXY]PHOSPHORYL] HYDROGEN PHOSPHATE (CCD ID: AR6) (formula: C<sub>15</sub>H<sub>23</sub>N<sub>5</sub>O<sub>14</sub>P<sub>2</sub>).

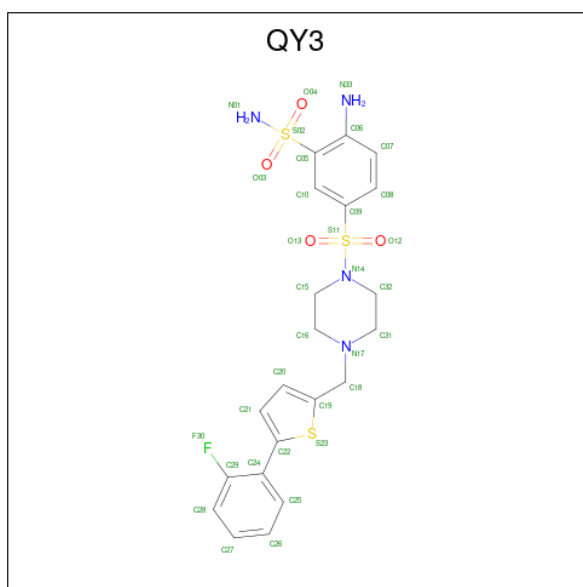


Mol	Chain	Residues	Atoms				ZeroOcc	AltConf	
			Total	C	N	O			P
2	A	1	36	15	5	14	2	0	0
2	B	1	36	15	5	14	2	0	0

- Molecule 3 is ZINC ION (CCD ID: ZN) (formula: Zn).

Mol	Chain	Residues	Atoms		ZeroOcc	AltConf
			Total	Zn		
3	A	1	1	1	0	0
3	B	1	1	1	0	0

- Molecule 4 is 2-azanyl-5-[4-[[5-(2-fluorophenyl)thiophen-2-yl]methyl]piperazin-1-yl]sulfon-yl-benzenesulfonamide (CCD ID: QY3) (formula: C<sub>21</sub>H<sub>23</sub>FN<sub>4</sub>O<sub>4</sub>S<sub>3</sub>) (labeled as "Ligand of Interest" by depositor).



Mol	Chain	Residues	Atoms					ZeroOcc	AltConf	
			Total	C	F	N	O			S
4	A	1	Total	C	F	N	O	S	0	0
			33	21	1	4	4	3		
4	B	1	Total	C	F	N	O	S	0	0
			33	21	1	4	4	3		

- Molecule 5 is DI(HYDROXYETHYL)ETHER (CCD ID: PEG) (formula: C<sub>4</sub>H<sub>10</sub>O<sub>3</sub>).



Mol	Chain	Residues	Atoms		ZeroOcc	AltConf
			Total	C O		
5	A	1	Total	C O	0	0
			7	4 3		
5	B	1	Total	C O	0	0
			7	4 3		

- Molecule 6 is SULFATE ION (CCD ID: SO4) (formula: O<sub>4</sub>S).



Mol	Chain	Residues	Atoms			ZeroOcc	AltConf
6	A	1	Total	O	S	0	0
			5	4	1		
6	A	1	Total	O	S	0	0
			5	4	1		
6	A	1	Total	O	S	0	0
			5	4	1		
6	A	1	Total	O	S	0	0
			5	4	1		
6	B	1	Total	O	S	0	0
			5	4	1		
6	B	1	Total	O	S	0	0
			5	4	1		
6	B	1	Total	O	S	0	0
			5	4	1		

- Molecule 7 is CHLORIDE ION (CCD ID: CL) (formula: Cl).

Mol	Chain	Residues	Atoms		ZeroOcc	AltConf
7	A	2	Total	Cl	0	0
			2	2		
7	B	1	Total	Cl	0	0
			1	1		


- Molecule 8 is water.

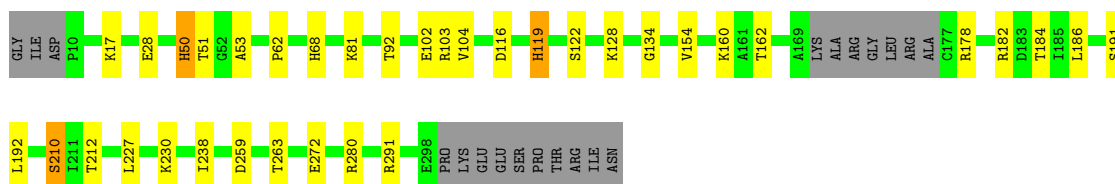
Mol	Chain	Residues	Atoms	ZeroOcc	AltConf
8	A	42	Total O 42 42	0	0
8	B	35	Total O 35 35	0	0

### 3 Residue-property plots [i](#)


These plots are drawn for all protein, RNA, DNA and oligosaccharide chains in the entry. The first graphic for a chain summarises the proportions of the various outlier classes displayed in the second graphic. The second graphic shows the sequence view annotated by issues in geometry and electron density. Residues are color-coded according to the number of geometric quality criteria for which they contain at least one outlier: green = 0, yellow = 1, orange = 2 and red = 3 or more. A red dot above a residue indicates a poor fit to the electron density ( $RSRZ > 2$ ). Stretches of 2 or more consecutive residues without any outlier are shown as a green connector. Residues present in the sample, but not in the model, are shown in grey.

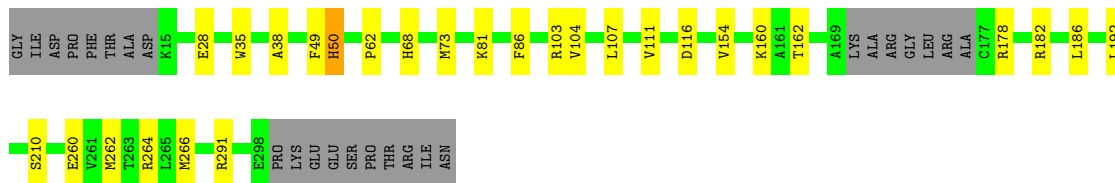
- Molecule 1: NAD-dependent protein deacetylase sirtuin-6

Chain A:  81% 11% 7%



- Molecule 1: NAD-dependent protein deacetylase sirtuin-6

Chain B:  82% 9% 8%



## 4 Data and refinement statistics

Property	Value	Source
Space group	P 63	Depositor
Cell constants a, b, c, $\alpha$ , $\beta$ , $\gamma$	91.69Å 91.69Å 144.35Å 90.00° 90.00° 120.00°	Depositor
Resolution (Å)	45.84 – 2.06 45.84 – 2.06	Depositor EDS
% Data completeness (in resolution range)	99.7 (45.84-2.06) 99.9 (45.84-2.06)	Depositor EDS
$R_{merge}$	(Not available)	Depositor
$R_{sym}$	(Not available)	Depositor
$\langle I/\sigma(I) \rangle$ <sup>1</sup>	0.99 (at 2.05Å)	Xtriage
Refinement program	REFMAC 5.8.0267	Depositor
R, $R_{free}$	0.178 , 0.216 0.182 , 0.204	Depositor DCC
$R_{free}$ test set	2101 reflections (4.94%)	wwPDB-VP
Wilson B-factor (Å <sup>2</sup> )	36.8	Xtriage
Anisotropy	0.432	Xtriage
Bulk solvent $k_{sol}$ (e/Å <sup>3</sup> ), $B_{sol}$ (Å <sup>2</sup> )	0.37 , 29.2	EDS
L-test for twinning <sup>2</sup>	$\langle  L  \rangle = 0.40$ , $\langle L^2 \rangle = 0.23$	Xtriage
Estimated twinning fraction	0.386 for h,-h-k,-l	Xtriage
Reported twinning fraction	0.388 for H, K, L 0.612 for -K, -H, -L	Depositor
Outliers	0 of 42563 reflections	Xtriage
$F_o, F_c$ correlation	0.96	EDS
Total number of atoms	4634	wwPDB-VP
Average B, all atoms (Å <sup>2</sup> )	44.0	wwPDB-VP

Xtriage's analysis on translational NCS is as follows: *The largest off-origin peak in the Patterson function is 3.92% of the height of the origin peak. No significant pseudotranslation is detected.*

<sup>1</sup>Intensities estimated from amplitudes.

<sup>2</sup>Theoretical values of  $\langle |L| \rangle$ ,  $\langle L^2 \rangle$  for acentric reflections are 0.5, 0.333 respectively for untwinned datasets, and 0.375, 0.2 for perfectly twinned datasets.

## 5 Model quality [i](#)

### 5.1 Standard geometry [i](#)

Bond lengths and bond angles in the following residue types are not validated in this section: SO4, AR6, QY3, PEG, CL, ZN

The Z score for a bond length (or angle) is the number of standard deviations the observed value is removed from the expected value. A bond length (or angle) with  $|Z| > 5$  is considered an outlier worth inspection. RMSZ is the root-mean-square of all Z scores of the bond lengths (or angles).

Mol	Chain	Bond lengths		Bond angles	
		RMSZ	# Z  >5	RMSZ	# Z  >5
1	A	1.11	1/2251 (0.0%)	1.52	10/3053 (0.3%)
1	B	1.07	1/2205 (0.0%)	1.47	2/2991 (0.1%)
All	All	1.09	2/4456 (0.0%)	1.49	12/6044 (0.2%)

All (2) bond length outliers are listed below:

Mol	Chain	Res	Type	Atoms	Z	Observed(Å)	Ideal(Å)
1	B	50	HIS	CE1-NE2	-5.52	1.27	1.32
1	A	119	HIS	C-O	5.31	1.30	1.24

All (12) bond angle outliers are listed below:

Mol	Chain	Res	Type	Atoms	Z	Observed(°)	Ideal(°)
1	A	51	THR	CA-C-N	6.09	127.59	122.17
1	A	51	THR	C-N-CA	6.09	127.59	122.17
1	A	81	LYS	CB-CA-C	5.63	119.16	110.14
1	A	92	THR	CA-C-N	5.48	127.88	120.38
1	A	92	THR	C-N-CA	5.48	127.88	120.38
1	B	116	ASP	CA-CB-CG	5.33	117.93	112.60
1	A	50	HIS	CA-C-O	-5.30	114.83	120.40
1	B	81	LYS	CB-CA-C	5.25	118.88	110.16
1	A	272	GLU	CA-C-N	5.14	126.29	122.59
1	A	272	GLU	C-N-CA	5.14	126.29	122.59
1	A	53	ALA	CA-C-N	5.11	126.57	120.13
1	A	53	ALA	C-N-CA	5.11	126.57	120.13

There are no chirality outliers.

There are no planarity outliers.

## 5.2 Too-close contacts [i](#)

In the following table, the Non-H and H(model) columns list the number of non-hydrogen atoms and hydrogen atoms in the chain respectively. The H(added) column lists the number of hydrogen atoms added and optimized by MolProbity. The Clashes column lists the number of clashes within the asymmetric unit, whereas Symm-Clashes lists symmetry-related clashes.

Mol	Chain	Non-H	H(model)	H(added)	Clashes	Symm-Clashes
1	A	2202	0	2215	16	0
1	B	2158	0	2171	15	0
2	A	36	0	21	0	0
2	B	36	0	20	0	0
3	A	1	0	0	0	0
3	B	1	0	0	0	0
4	A	33	0	0	2	0
4	B	33	0	0	1	0
5	A	7	0	10	0	0
5	B	7	0	10	1	0
6	A	20	0	0	0	0
6	B	20	0	0	1	0
7	A	2	0	0	0	0
7	B	1	0	0	1	0
8	A	42	0	0	1	0
8	B	35	0	0	0	0
All	All	4634	0	4447	30	0

The all-atom clashscore is defined as the number of clashes found per 1000 atoms (including hydrogen atoms). The all-atom clashscore for this structure is 3.

All (30) close contacts within the same asymmetric unit are listed below, sorted by their clash magnitude.

Atom-1	Atom-2	Interatomic distance (Å)	Clash overlap (Å)
1:B:68:HIS:ND1	6:B:405:SO4:O2	2.22	0.64
1:B:62:PRO:O	4:B:404:QY3:N33	2.31	0.63
1:B:103:ARG:HD3	7:B:409:CL:CL	2.37	0.62
1:A:62:PRO:O	4:A:403:QY3:N33	2.34	0.61
1:A:259:ASP:O	1:A:263:THR:HG23	2.02	0.58
1:B:104:VAL:HB	1:B:291:ARG:HB3	1.86	0.58
1:A:160:LYS:O	1:A:182:ARG:HA	2.06	0.56
1:A:104:VAL:HB	1:A:291:ARG:HB3	1.89	0.55
1:A:68:HIS:CE1	1:B:73:MET:HE2	2.44	0.52
1:A:119:HIS:O	1:A:122:SER:OG	2.26	0.48
1:B:28:GLU:H	1:B:28:GLU:CD	2.22	0.48

*Continued on next page...*

Continued from previous page...

Atom-1	Atom-2	Interatomic distance (Å)	Clash overlap (Å)
1:B:50:HIS:HA	1:B:111:VAL:O	2.15	0.47
1:B:160:LYS:O	1:B:182:ARG:HA	2.15	0.47
1:B:262:MET:O	1:B:266:MET:HG2	2.16	0.46
1:B:186:LEU:HD11	1:B:192:LEU:HA	1.98	0.45
1:A:28:GLU:H	1:A:28:GLU:CD	2.25	0.45
1:A:116:ASP:OD2	4:A:403:QY3:N01	2.50	0.44
1:B:49:PHE:CD1	1:B:107:LEU:HD12	2.52	0.44
1:A:134:GLY:HA3	1:A:184:THR:O	2.19	0.43
1:B:260:GLU:OE1	1:B:264:ARG:NH2	2.51	0.43
1:A:102:GLU:OE2	1:A:128:LYS:NZ	2.45	0.43
1:B:35:TRP:O	1:B:38:ALA:HB3	2.19	0.43
1:A:186:LEU:HD11	1:A:192:LEU:HA	2.01	0.42
1:A:154:VAL:HG13	1:A:162:THR:HG21	2.02	0.41
1:A:212:THR:OG1	1:A:238:ILE:HA	2.20	0.41
1:A:227:LEU:O	1:A:230:LYS:HB2	2.21	0.41
1:B:86:PHE:H	5:B:403:PEG:H11	1.85	0.41
1:A:50:HIS:HE1	1:A:210:SER:OG	2.03	0.41
1:B:154:VAL:HG13	1:B:162:THR:HG21	2.03	0.40
1:A:103:ARG:HG3	8:A:503:HOH:O	2.20	0.40

There are no symmetry-related clashes.

## 5.3 Torsion angles [i](#)

### 5.3.1 Protein backbone [i](#)

In the following table, the Percentiles column shows the percent Ramachandran outliers of the chain as a percentile score with respect to all X-ray entries followed by that with respect to entries of similar resolution.

The Analysed column shows the number of residues for which the backbone conformation was analysed, and the total number of residues.

Mol	Chain	Analysed	Favoured	Allowed	Outliers	Percentiles	
1	A	278/302 (92%)	272 (98%)	6 (2%)	0	100	100
1	B	273/302 (90%)	269 (98%)	4 (2%)	0	100	100
All	All	551/604 (91%)	541 (98%)	10 (2%)	0	100	100

There are no Ramachandran outliers to report.

### 5.3.2 Protein sidechains [i](#)

In the following table, the Percentiles column shows the percent sidechain outliers of the chain as a percentile score with respect to all X-ray entries followed by that with respect to entries of similar resolution.

The Analysed column shows the number of residues for which the sidechain conformation was analysed, and the total number of residues.

Mol	Chain	Analysed	Rotameric	Outliers	Percentiles	
1	A	239/256 (93%)	234 (98%)	5 (2%)	48	45
1	B	234/256 (91%)	232 (99%)	2 (1%)	75	76
All	All	473/512 (92%)	466 (98%)	7 (2%)	60	59

All (7) residues with a non-rotameric sidechain are listed below:

Mol	Chain	Res	Type
1	A	17	LYS
1	A	178	ARG
1	A	191	SER
1	A	210	SER
1	A	280	ARG
1	B	178	ARG
1	B	210	SER

Sometimes sidechains can be flipped to improve hydrogen bonding and reduce clashes. All (2) such sidechains are listed below:

Mol	Chain	Res	Type
1	A	50	HIS
1	A	68	HIS

### 5.3.3 RNA [i](#)

There are no RNA molecules in this entry.

## 5.4 Non-standard residues in protein, DNA, RNA chains [i](#)

There are no non-standard protein/DNA/RNA residues in this entry.

## 5.5 Carbohydrates [i](#)

There are no oligosaccharides in this entry.

## 5.6 Ligand geometry [i](#)

Of 19 ligands modelled in this entry, 5 are monoatomic - leaving 14 for Mogul analysis.

In the following table, the Counts columns list the number of bonds (or angles) for which Mogul statistics could be retrieved, the number of bonds (or angles) that are observed in the model and the number of bonds (or angles) that are defined in the Chemical Component Dictionary. The Link column lists molecule types, if any, to which the group is linked. The Z score for a bond length (or angle) is the number of standard deviations the observed value is removed from the expected value. A bond length (or angle) with  $|Z| > 2$  is considered an outlier worth inspection. RMSZ is the root-mean-square of all Z scores of the bond lengths (or angles).

Mol	Type	Chain	Res	Link	Bond lengths			Bond angles		
					Counts	RMSZ	# Z  > 2	Counts	RMSZ	# Z  > 2
5	PEG	A	404	-	6,6,6	0.12	0	5,5,5	0.19	0
4	QY3	B	404	-	35,36,36	5.42	14 (40%)	44,54,54	3.60	26 (59%)
6	SO4	A	408	-	4,4,4	0.31	0	6,6,6	0.06	0
2	AR6	B	401	-	34,39,39	0.58	0	40,60,60	0.97	3 (7%)
6	SO4	B	406	-	4,4,4	0.40	0	6,6,6	0.08	0
4	QY3	A	403	-	35,36,36	5.29	17 (48%)	44,54,54	3.81	24 (54%)
6	SO4	B	407	-	4,4,4	0.38	0	6,6,6	0.06	0
6	SO4	B	405	-	4,4,4	0.53	0	6,6,6	0.20	0
6	SO4	A	406	-	4,4,4	0.30	0	6,6,6	0.19	0
2	AR6	A	401	-	34,39,39	0.69	0	40,60,60	1.00	2 (5%)
6	SO4	B	408	-	4,4,4	0.38	0	6,6,6	0.05	0
6	SO4	A	407	-	4,4,4	0.40	0	6,6,6	0.13	0
5	PEG	B	403	-	6,6,6	0.15	0	5,5,5	0.12	0
6	SO4	A	405	-	4,4,4	0.43	0	6,6,6	0.15	0

In the following table, the Chirals column lists the number of chiral outliers, the number of chiral centers analysed, the number of these observed in the model and the number defined in the Chemical Component Dictionary. Similar counts are reported in the Torsion and Rings columns. '-' means no outliers of that kind were identified.

Mol	Type	Chain	Res	Link	Chirals	Torsions	Rings
5	PEG	A	404	-	-	3/4/4/4	-
4	QY3	B	404	-	-	3/23/36/36	0/4/4/4
2	AR6	B	401	-	-	6/18/54/54	0/4/4/4
4	QY3	A	403	-	-	5/23/36/36	0/4/4/4

*Continued on next page...*

Continued from previous page...

Mol	Type	Chain	Res	Link	Chirals	Torsions	Rings
2	AR6	A	401	-	-	2/18/54/54	0/4/4/4
5	PEG	B	403	-	-	2/4/4/4	-

All (31) bond length outliers are listed below:

Mol	Chain	Res	Type	Atoms	Z	Observed(Å)	Ideal(Å)
4	B	404	QY3	O12-S11	18.29	1.63	1.43
4	A	403	QY3	O12-S11	18.21	1.63	1.43
4	B	404	QY3	O13-S11	14.50	1.59	1.43
4	A	403	QY3	O13-S11	14.07	1.59	1.43
4	A	403	QY3	S11-N14	10.27	1.78	1.63
4	B	404	QY3	S11-N14	10.04	1.77	1.63
4	B	404	QY3	O03-S02	9.99	1.62	1.43
4	B	404	QY3	O04-S02	9.71	1.61	1.43
4	A	403	QY3	O03-S02	9.42	1.61	1.43
4	A	403	QY3	O04-S02	9.33	1.61	1.43
4	B	404	QY3	S02-N01	8.45	1.77	1.60
4	B	404	QY3	C24-C22	-6.98	1.41	1.48
4	A	403	QY3	S02-N01	6.49	1.73	1.60
4	A	403	QY3	C06-C05	4.11	1.46	1.41
4	A	403	QY3	C24-C29	4.06	1.44	1.39
4	A	403	QY3	C05-S02	3.81	1.82	1.77
4	A	403	QY3	C18-N17	3.58	1.54	1.47
4	A	403	QY3	C28-C29	2.98	1.44	1.37
4	B	404	QY3	C18-C19	-2.88	1.48	1.51
4	A	403	QY3	C24-C22	-2.69	1.45	1.48
4	B	404	QY3	C15-N14	2.65	1.50	1.47
4	B	404	QY3	C18-N17	2.61	1.52	1.47
4	A	403	QY3	C15-N14	2.59	1.50	1.47
4	A	403	QY3	C25-C24	2.54	1.43	1.40
4	A	403	QY3	C18-C19	-2.40	1.49	1.51
4	B	404	QY3	C28-C29	2.30	1.42	1.37
4	A	403	QY3	C16-N17	2.29	1.53	1.46
4	B	404	QY3	C06-C05	2.19	1.43	1.41
4	B	404	QY3	C24-C29	2.10	1.42	1.39
4	A	403	QY3	C26-C25	2.08	1.43	1.38
4	B	404	QY3	C31-N17	2.03	1.52	1.46

All (55) bond angle outliers are listed below:

Mol	Chain	Res	Type	Atoms	Z	Observed(°)	Ideal(°)
4	B	404	QY3	O04-S02-O03	-10.14	102.09	118.76

Continued on next page...

*Continued from previous page...*

Mol	Chain	Res	Type	Atoms	Z	Observed(°)	Ideal(°)
4	A	403	QY3	O12-S11-N14	-9.82	97.73	106.69
4	A	403	QY3	C07-C06-C05	9.26	122.13	117.04
4	B	404	QY3	O13-S11-O12	-8.97	104.98	119.52
4	A	403	QY3	C09-S11-N14	8.88	117.88	107.30
4	B	404	QY3	C09-S11-N14	8.44	117.36	107.30
4	A	403	QY3	O13-S11-O12	-7.21	107.83	119.52
4	B	404	QY3	C07-C06-C05	7.12	120.95	117.04
4	A	403	QY3	O04-S02-O03	-6.48	108.11	118.76
4	A	403	QY3	C32-N14-S11	-5.91	106.30	117.05
4	B	404	QY3	C32-N14-C15	5.78	118.56	112.17
4	B	404	QY3	C31-C32-N14	5.03	112.76	108.91
4	A	403	QY3	C16-C15-N14	5.02	112.75	108.91
4	A	403	QY3	C31-C32-N14	4.93	112.68	108.91
4	B	404	QY3	C16-C15-N14	4.84	112.61	108.91
4	A	403	QY3	C10-C05-C06	-4.70	115.27	120.80
4	A	403	QY3	O04-S02-C05	4.57	113.98	107.29
4	B	404	QY3	C08-C09-S11	-4.50	115.02	119.76
4	B	404	QY3	C10-C09-S11	4.49	124.34	119.34
4	A	403	QY3	C07-C06-N33	-4.32	111.77	120.13
4	B	404	QY3	O04-S02-C05	4.29	113.58	107.29
4	A	403	QY3	C05-S02-N01	3.70	115.09	108.28
4	A	403	QY3	O13-S11-N14	3.67	110.03	106.69
4	A	403	QY3	C10-C09-S11	3.45	123.18	119.34
4	A	403	QY3	C08-C09-S11	-3.37	116.20	119.76
2	A	401	AR6	C5-C6-N6	3.32	125.39	120.35
4	A	403	QY3	C05-C06-N33	3.19	125.99	122.99
4	B	404	QY3	C28-C29-C24	-3.18	119.41	123.30
4	B	404	QY3	C32-N14-S11	-3.10	111.41	117.05
4	A	403	QY3	O12-S11-C09	3.04	111.89	108.05
4	B	404	QY3	C05-S02-N01	2.94	113.70	108.28
2	B	401	AR6	PB-O3A-PA	-2.91	122.83	132.83
4	B	404	QY3	C25-C24-C22	-2.91	115.43	120.21
4	A	403	QY3	C15-N14-S11	-2.80	111.96	117.05
4	B	404	QY3	C07-C06-N33	-2.77	114.77	120.13
4	B	404	QY3	O13-S11-C09	2.75	111.53	108.05
4	A	403	QY3	C31-N17-C16	2.72	114.95	108.83
4	B	404	QY3	C18-N17-C31	-2.62	105.23	111.06
2	B	401	AR6	C5-C6-N6	2.62	124.33	120.35
4	B	404	QY3	C10-C05-S02	-2.55	115.29	118.34
4	B	404	QY3	C15-N14-S11	-2.53	112.45	117.05
4	A	403	QY3	F30-C29-C24	2.52	122.69	118.89
4	B	404	QY3	O04-S02-N01	2.51	111.08	107.36

*Continued on next page...*

Continued from previous page...

Mol	Chain	Res	Type	Atoms	Z	Observed(°)	Ideal(°)
4	A	403	QY3	C09-C10-C05	2.50	123.07	120.29
4	B	404	QY3	O13-S11-N14	2.48	108.95	106.69
2	B	401	AR6	C3'-C2'-C1'	2.43	104.63	100.98
4	A	403	QY3	C10-C05-S02	-2.38	115.50	118.34
4	B	404	QY3	C08-C07-C06	-2.36	118.91	121.42
4	A	403	QY3	C18-N17-C31	-2.26	106.02	111.06
4	B	404	QY3	C19-C18-N17	2.13	117.27	112.78
4	B	404	QY3	C31-N17-C16	2.11	113.58	108.83
4	B	404	QY3	F30-C29-C24	2.08	122.02	118.89
4	B	404	QY3	C22-C24-C29	2.07	126.03	122.47
2	A	401	AR6	C3'-C2'-C1'	2.06	104.09	100.98
4	A	403	QY3	C22-C24-C29	2.05	125.99	122.47

There are no chirality outliers.

All (21) torsion outliers are listed below:

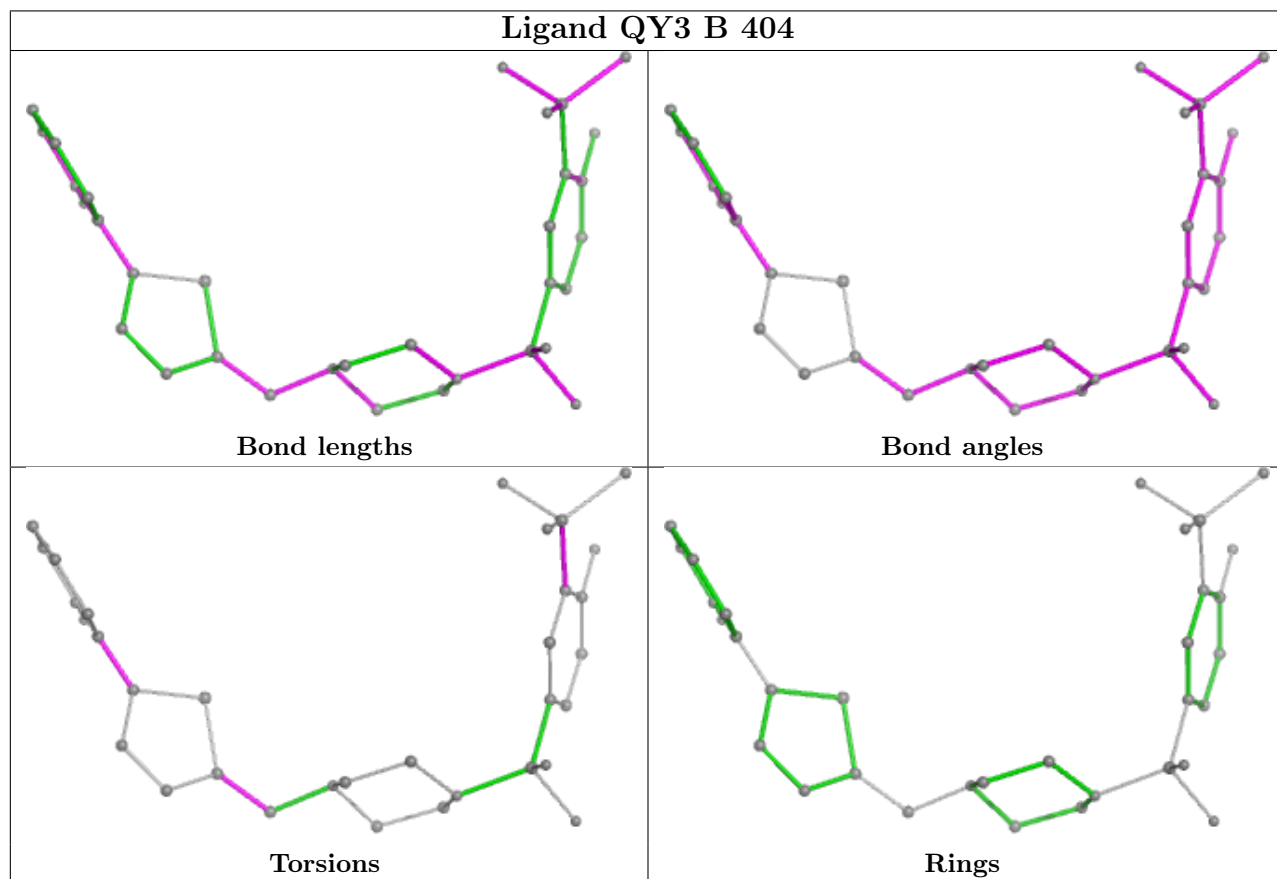
Mol	Chain	Res	Type	Atoms
2	B	401	AR6	C5'-O5'-PA-O2A
2	B	401	AR6	C5D-O5D-PB-O2B
4	A	403	QY3	N17-C18-C19-C20
4	B	404	QY3	S23-C22-C24-C25
4	B	404	QY3	N17-C18-C19-C20
4	A	403	QY3	C32-N14-S11-O12
2	B	401	AR6	O4'-C4'-C5'-O5'
2	B	401	AR6	C3'-C4'-C5'-O5'
4	A	403	QY3	C32-N14-S11-C09
5	A	404	PEG	O1-C1-C2-O2
5	B	403	PEG	O2-C3-C4-O4
4	B	404	QY3	C06-C05-S02-O03
5	A	404	PEG	O2-C3-C4-O4
2	B	401	AR6	C5'-O5'-PA-O3A
5	A	404	PEG	C4-C3-O2-C2
4	A	403	QY3	S23-C22-C24-C25
4	A	403	QY3	C06-C05-S02-O03
5	B	403	PEG	C1-C2-O2-C3
2	B	401	AR6	C5D-O5D-PB-O3A
2	A	401	AR6	C5D-O5D-PB-O2B
2	A	401	AR6	O4'-C4'-C5'-O5'

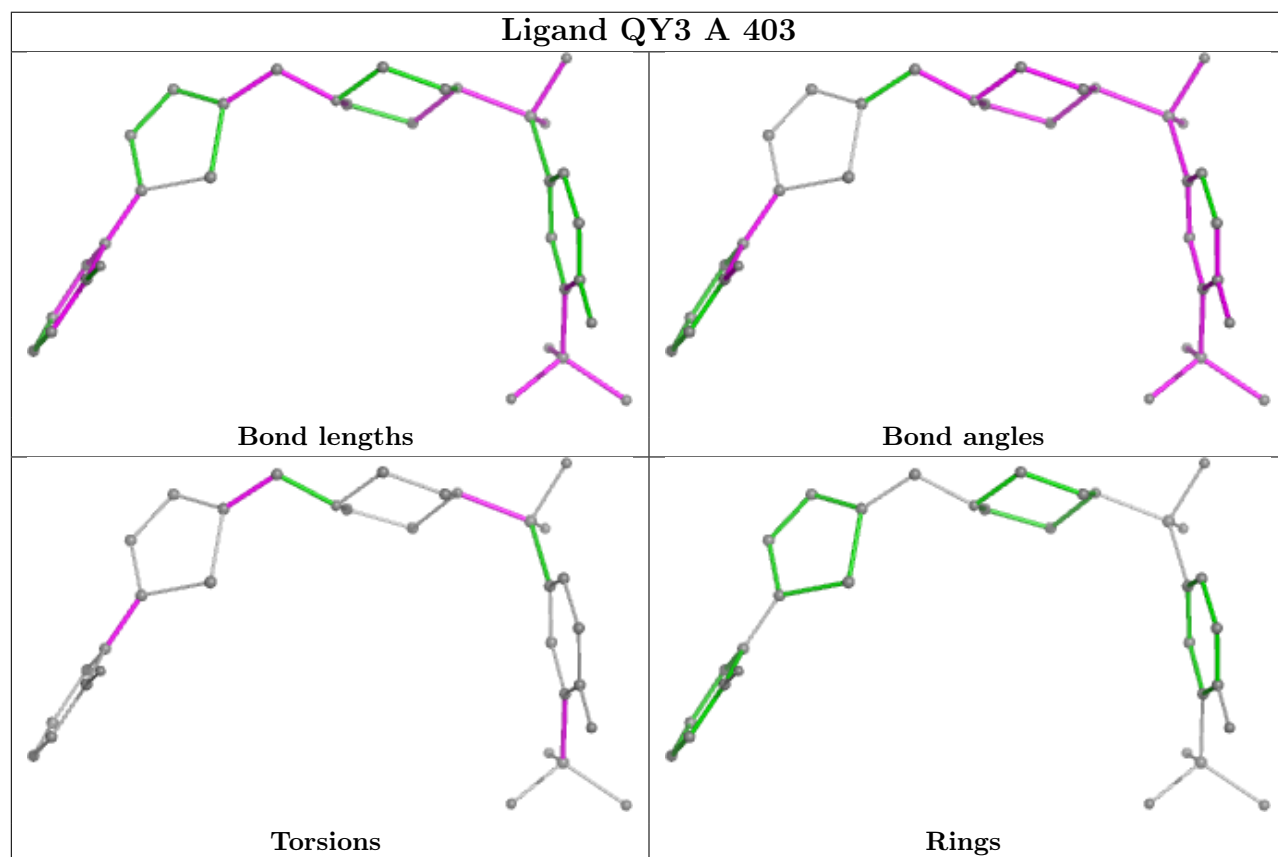
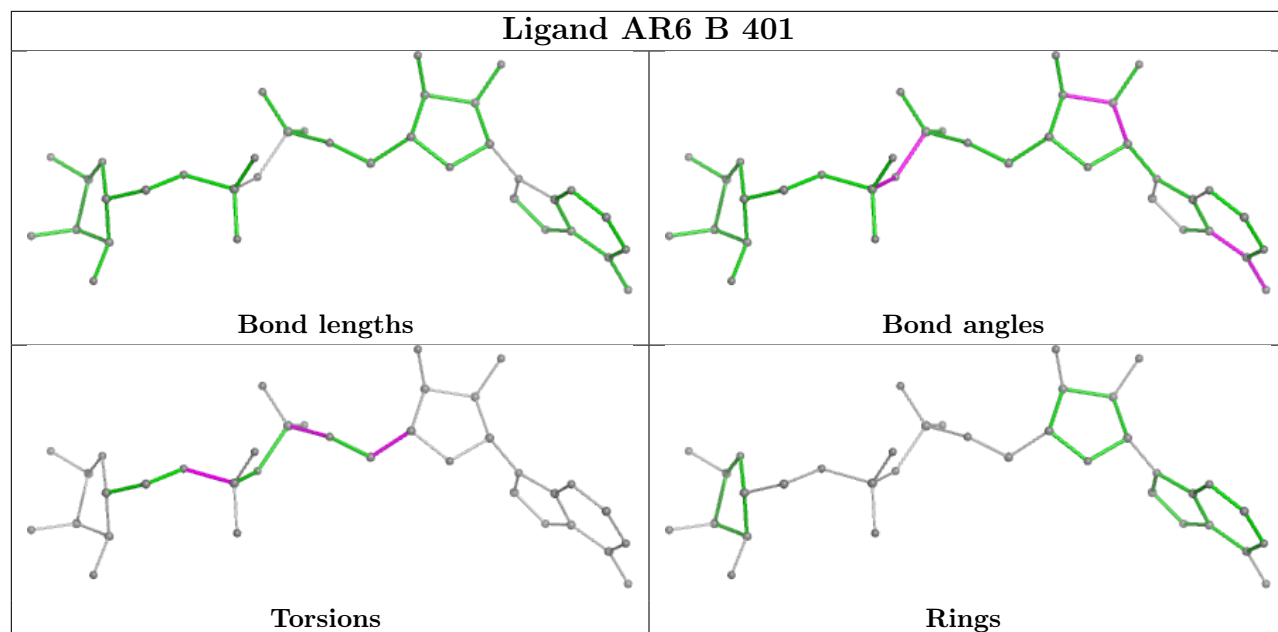
There are no ring outliers.

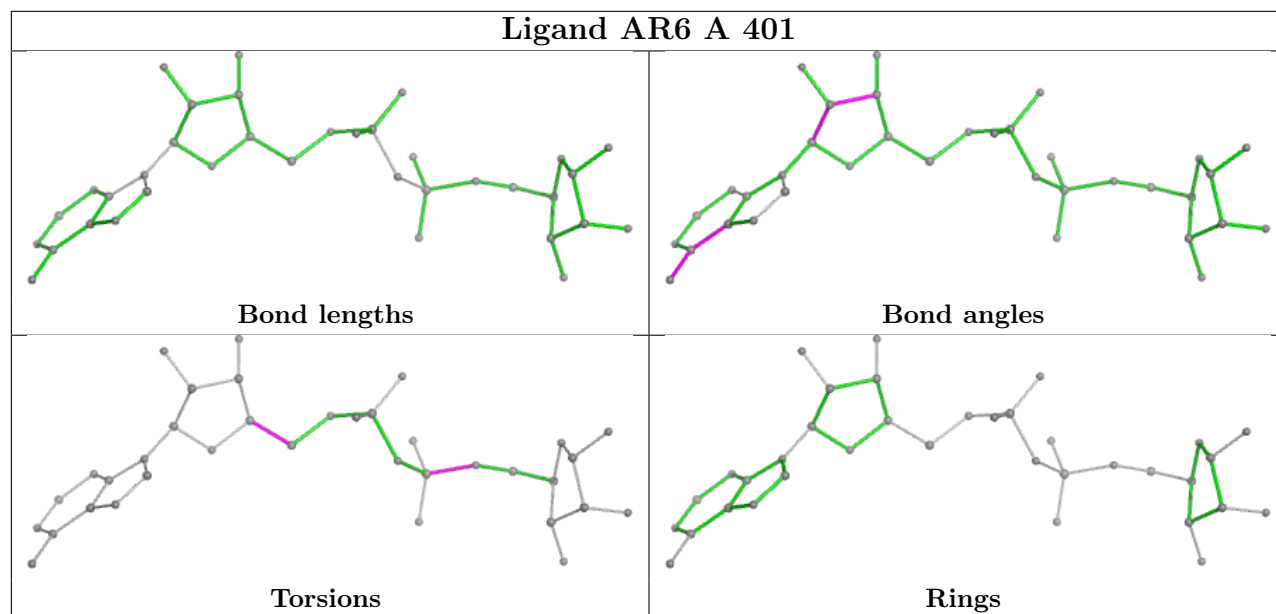
4 monomers are involved in 5 short contacts:

Mol	Chain	Res	Type	Clashes	Symm-Clashes
4	B	404	QY3	1	0
4	A	403	QY3	2	0
6	B	405	SO4	1	0
5	B	403	PEG	1	0

The following is a two-dimensional graphical depiction of Mogul quality analysis of bond lengths, bond angles, torsion angles, and ring geometry for all instances of the Ligand of Interest. In addition, ligands with molecular weight > 250 and outliers as shown on the validation Tables will also be included. For torsion angles, if less than 5% of the Mogul distribution of torsion angles is within 10 degrees of the torsion angle in question, then that torsion angle is considered an outlier. Any bond that is central to one or more torsion angles identified as an outlier by Mogul will be highlighted in the graph. For rings, the root-mean-square deviation (RMSD) between the ring in question and similar rings identified by Mogul is calculated over all ring torsion angles. If the average RMSD is greater than 60 degrees and the minimal RMSD between the ring in question and any Mogul-identified rings is also greater than 60 degrees, then that ring is considered an outlier. The outliers are highlighted in purple. The color gray indicates Mogul did not find sufficient equivalents in the CSD to analyse the geometry.







## 5.7 Other polymers [i](#)

There are no such residues in this entry.

## 5.8 Polymer linkage issues [i](#)

There are no chain breaks in this entry.

## 6 Fit of model and data [i](#)

### 6.1 Protein, DNA and RNA chains [i](#)

In the following table, the column labelled '#RSRZ > 2' contains the number (and percentage) of RSRZ outliers, followed by percent RSRZ outliers for the chain as percentile scores relative to all X-ray entries and entries of similar resolution. The OWAB column contains the minimum, median, 95<sup>th</sup> percentile and maximum values of the occupancy-weighted average B-factor per residue. The column labelled 'Q < 0.9' lists the number of (and percentage) of residues with an average occupancy less than 0.9.

Mol	Chain	Analysed	<RSRZ>	#RSRZ>2	OWAB(Å <sup>2</sup> )	Q<0.9
1	A	282/302 (93%)	-0.89	0 100 100	23, 38, 58, 86	0
1	B	277/302 (91%)	-0.71	0 100 100	30, 45, 73, 97	0
All	All	559/604 (92%)	-0.80	0 100 100	23, 41, 68, 97	0

There are no RSRZ outliers to report.

### 6.2 Non-standard residues in protein, DNA, RNA chains [i](#)

There are no non-standard protein/DNA/RNA residues in this entry.

### 6.3 Carbohydrates [i](#)

There are no oligosaccharides in this entry.

### 6.4 Ligands [i](#)

In the following table, the Atoms column lists the number of modelled atoms in the group and the number defined in the chemical component dictionary. The B-factors column lists the minimum, median, 95<sup>th</sup> percentile and maximum values of B factors of atoms in the group. The column labelled 'Q < 0.9' lists the number of atoms with occupancy less than 0.9.

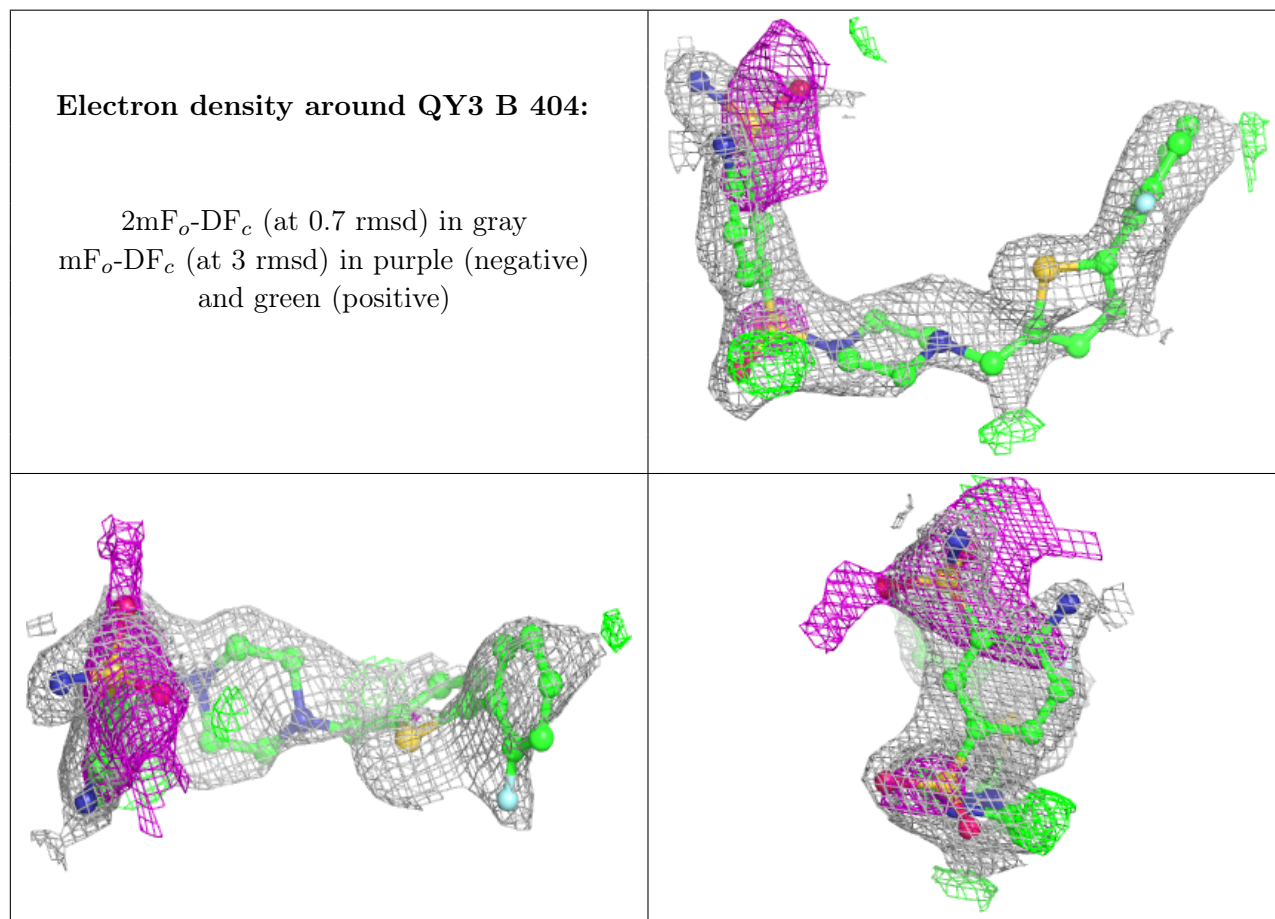
Mol	Type	Chain	Res	Atoms	RSCC	RSR	B-factors(Å <sup>2</sup> )	Q<0.9
4	QY3	B	404	33/33	0.95	0.10	37,51,67,76	0
7	CL	A	409	1/1	0.96	0.06	66,66,66,66	0
6	SO4	A	407	5/5	0.97	0.06	56,56,61,62	0
6	SO4	A	408	5/5	0.97	0.06	56,61,62,65	0
6	SO4	B	406	5/5	0.97	0.06	58,62,71,73	0
6	SO4	B	407	5/5	0.97	0.05	68,75,80,80	0
4	QY3	A	403	33/33	0.97	0.08	32,40,55,57	0

*Continued on next page...*

Continued from previous page...

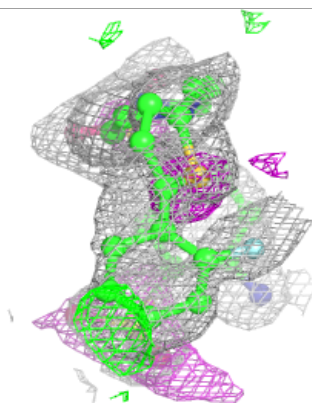
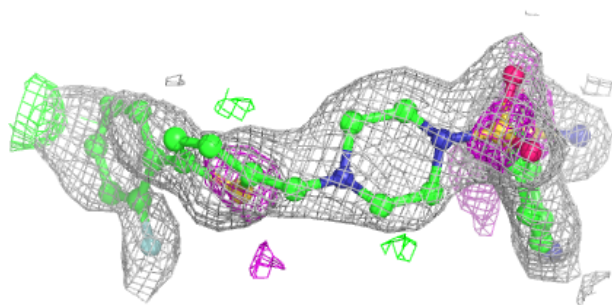
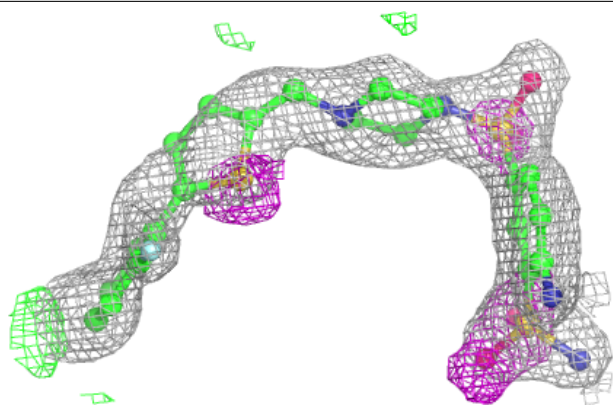
Mol	Type	Chain	Res	Atoms	RSCC	RSR	B-factors( $\text{\AA}^2$ )	Q<0.9
6	SO4	A	406	5/5	0.98	0.16	48,48,54,54	0
5	PEG	B	403	7/7	0.98	0.06	51,54,57,58	0
6	SO4	B	408	5/5	0.98	0.04	66,69,72,74	0
6	SO4	A	405	5/5	0.98	0.04	58,61,65,66	0
7	CL	A	410	1/1	0.98	0.05	54,54,54,54	0
7	CL	B	409	1/1	0.98	0.05	57,57,57,57	0
2	AR6	B	401	36/36	0.99	0.04	29,37,49,53	0
6	SO4	B	405	5/5	0.99	0.05	48,48,56,57	0
5	PEG	A	404	7/7	0.99	0.06	51,56,62,68	0
2	AR6	A	401	36/36	0.99	0.04	20,28,33,36	0
3	ZN	B	402	1/1	1.00	0.02	66,66,66,66	0
3	ZN	A	402	1/1	1.00	0.02	56,56,56,56	0

The following is a graphical depiction of the model fit to experimental electron density of all instances of the Ligand of Interest. In addition, ligands with molecular weight > 250 and outliers as shown on the geometry validation Tables will also be included. Each fit is shown from different orientation to approximate a three-dimensional view.

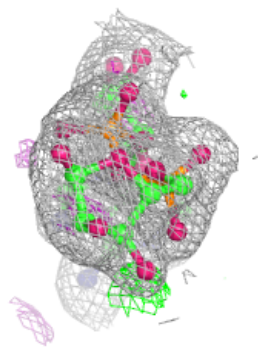
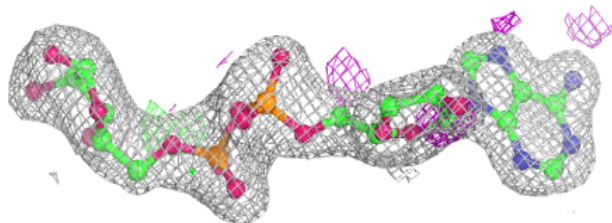
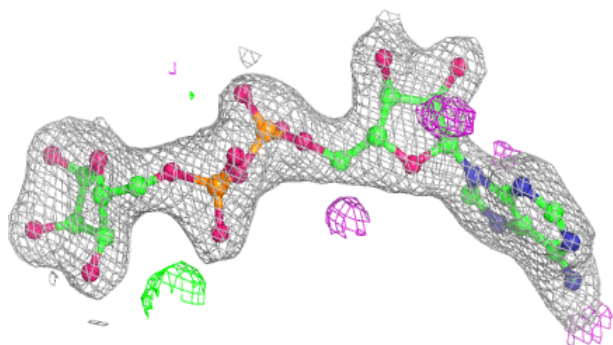


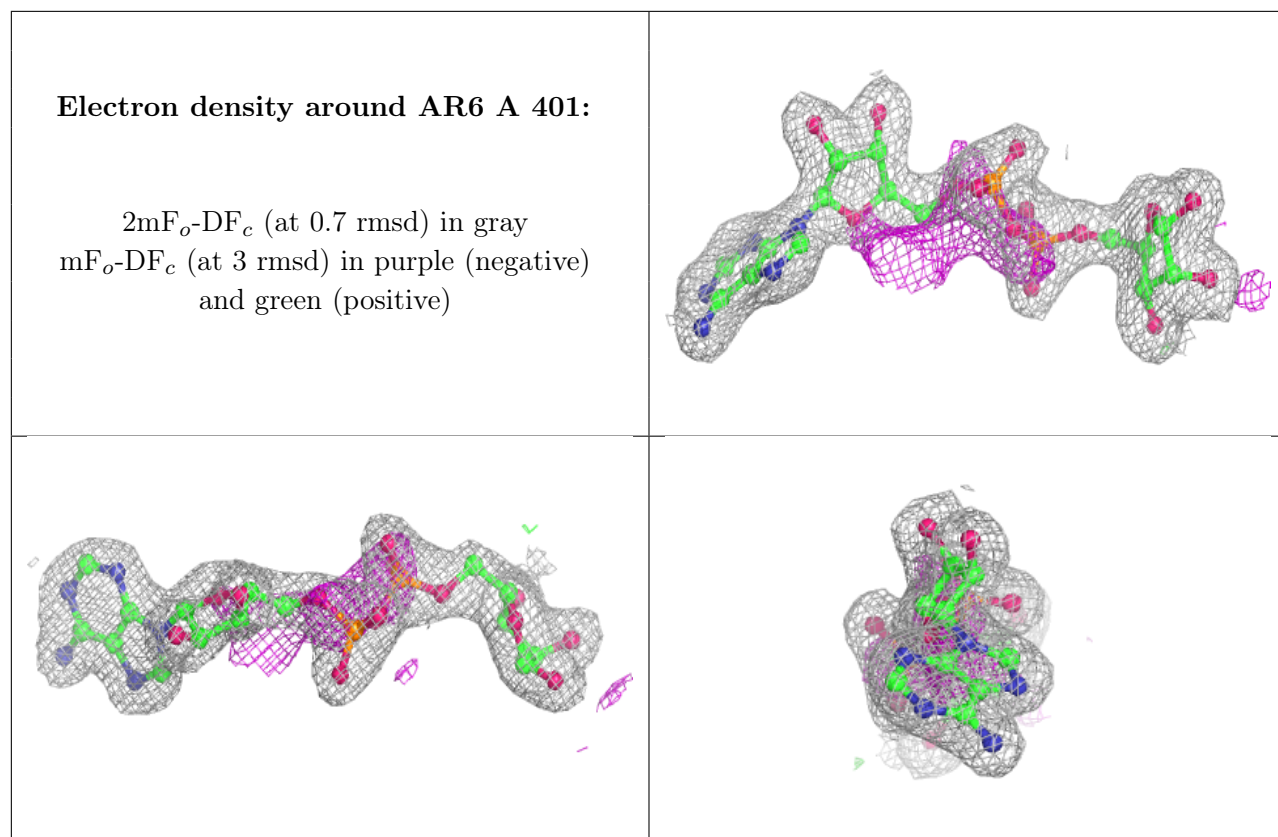
**Electron density around QY3 A 403:**

$2mF_o-DF_c$  (at 0.7 rmsd) in gray  
 $mF_o-DF_c$  (at 3 rmsd) in purple (negative)  
and green (positive)

**Electron density around AR6 B 401:**

$2mF_o-DF_c$  (at 0.7 rmsd) in gray  
 $mF_o-DF_c$  (at 3 rmsd) in purple (negative)  
and green (positive)





## 6.5 Other polymers [i](#)

There are no such residues in this entry.