



# Full wwPDB X-ray Structure Validation Report ⓘ

Jun 24, 2025 – 06:53 pm BST

PDB ID : 8H7F / pdb\_00008h7f  
Title : The crystal structure of human abl1 kinase domain in complex with abl1-B-EBA  
Authors : Zhu, C.J.; Zhang, Z.M.  
Deposited on : 2022-10-20  
Resolution : 2.45 Å(reported)

This is a Full wwPDB X-ray Structure Validation Report for a publicly released PDB entry.

We welcome your comments at [validation@mail.wwpdb.org](mailto:validation@mail.wwpdb.org)

A user guide is available at

<https://www.wwpdb.org/validation/2017/XrayValidationReportHelp>

with specific help available everywhere you see the ⓘ symbol.

The types of validation reports are described at

<http://www.wwpdb.org/validation/2017/FAQs#types>.

---

The following versions of software and data (see [references ⓘ](#)) were used in the production of this report:

MolProbity	:	4-5-2 with Phenix2.0rc1
Mogul	:	1.8.4, CSD as541be (2020)
Xtriage (Phenix)	:	2.0rc1
EDS	:	3.0
buster-report	:	1.1.7 (2018)
Percentile statistics	:	20231227.v01 (using entries in the PDB archive December 27th 2023)
CCP4	:	9.0.003 (Gargrove)
Density-Fitness	:	1.0.11
Ideal geometry (proteins)	:	Engh & Huber (2001)
Ideal geometry (DNA, RNA)	:	Parkinson et al. (1996)
Validation Pipeline (wwPDB-VP)	:	2.44

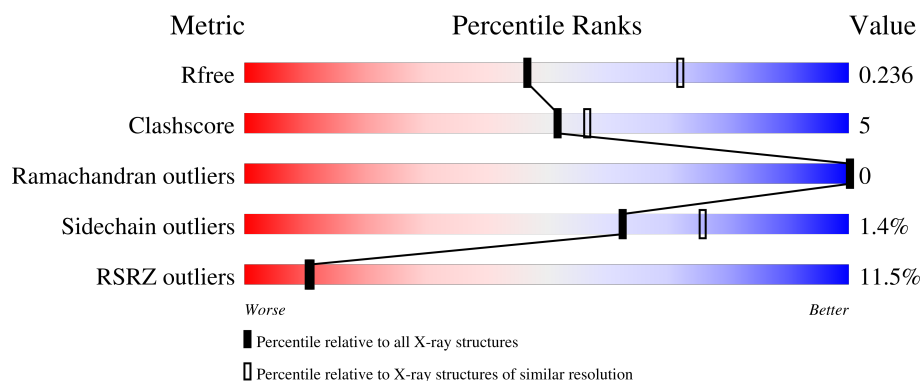
# 1 Overall quality at a glance

The following experimental techniques were used to determine the structure:

*X-RAY DIFFRACTION*

The reported resolution of this entry is 2.45 Å.

Percentile scores (ranging between 0-100) for global validation metrics of the entry are shown in the following graphic. The table shows the number of entries on which the scores are based.



Metric	Whole archive (#Entries)	Similar resolution (#Entries, resolution range(Å))
$R_{free}$	164625	1096 (2.46-2.46)
Clashscore	180529	1178 (2.46-2.46)
Ramachandran outliers	177936	1170 (2.46-2.46)
Sidechain outliers	177891	1170 (2.46-2.46)
RSRZ outliers	164620	1096 (2.46-2.46)

The table below summarises the geometric issues observed across the polymeric chains and their fit to the electron density. The red, orange, yellow and green segments of the lower bar indicate the fraction of residues that contain outliers for  $\geq 3$ , 2, 1 and 0 types of geometric quality criteria respectively. A grey segment represents the fraction of residues that are not modelled. The numeric value for each fraction is indicated below the corresponding segment, with a dot representing fractions  $\leq 5\%$ . The upper red bar (where present) indicates the fraction of residues that have poor fit to the electron density. The numeric value is given above the bar.

Mol	Chain	Length	Quality of chain
1	A	277	
1	B	277	

## 2 Entry composition

There are 3 unique types of molecules in this entry. The entry contains 4441 atoms, of which 0 are hydrogens and 0 are deuteriums.

In the tables below, the ZeroOcc column contains the number of atoms modelled with zero occupancy, the AltConf column contains the number of residues with at least one atom in alternate conformation and the Trace column contains the number of residues modelled with at most 2 atoms.

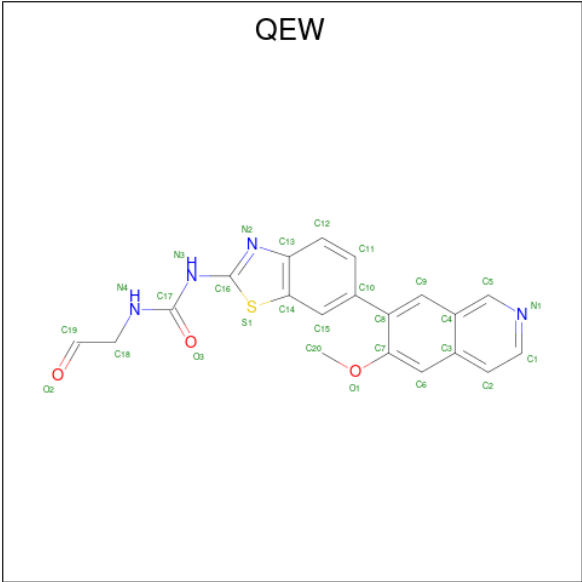
- Molecule 1 is a protein called Tyrosine-protein kinase ABL1.

Mol	Chain	Residues	Atoms						ZeroOcc	AltConf	Trace
1	A	267	Total	C	N	O	P	S	0	0	0
			2145	1384	349	394	1	17			
1	B	257	Total	C	N	O	P	S	0	0	0
			2045	1317	329	383	1	15			

There are 10 discrepancies between the modelled and reference sequences:

Chain	Residue	Modelled	Actual	Comment	Reference
A	224	GLY	-	expression tag	UNP P00519
A	225	ALA	-	expression tag	UNP P00519
A	226	MET	-	expression tag	UNP P00519
A	227	GLY	-	expression tag	UNP P00519
A	228	SER	-	expression tag	UNP P00519
B	224	GLY	-	expression tag	UNP P00519
B	225	ALA	-	expression tag	UNP P00519
B	226	MET	-	expression tag	UNP P00519
B	227	GLY	-	expression tag	UNP P00519
B	228	SER	-	expression tag	UNP P00519

- Molecule 2 is 1-[6-(6-methoxyisoquinolin-7-yl)-1,3-benzothiazol-2-yl]-3-(2-oxidanylideneethyl)urea (CCD ID: QEW) (formula: C<sub>20</sub>H<sub>16</sub>N<sub>4</sub>O<sub>3</sub>S).



Mol	Chain	Residues	Atoms					ZeroOcc	AltConf
2	A	1	Total	C	N	O	S	0	0
			28	20	4	3	1		
2	B	1	Total	C	N	O	S	0	0
			28	20	4	3	1		

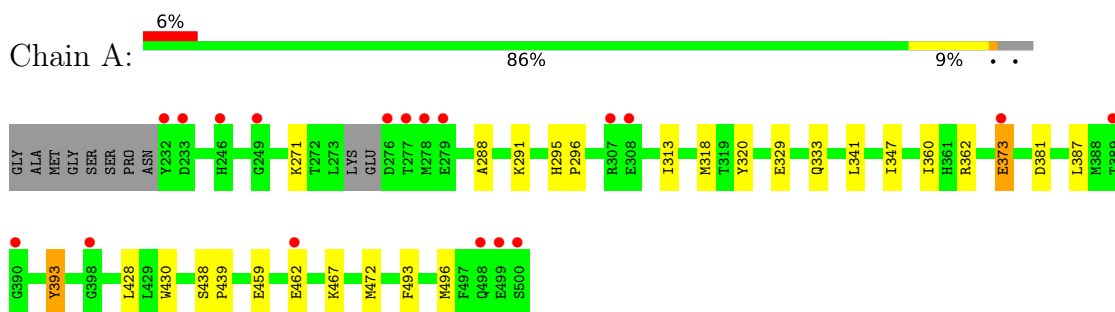
- Molecule 3 is water.

Mol	Chain	Residues	Atoms		ZeroOcc	AltConf
3	A	112	Total	O	0	0
			112	112		
3	B	83	Total	O	0	0
			83	83		

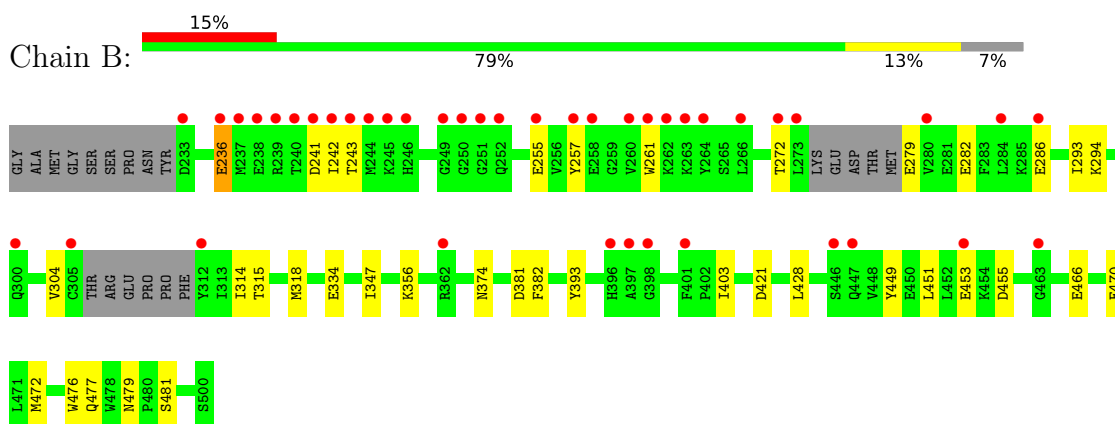
### 3 Residue-property plots [i](#)

These plots are drawn for all protein, RNA, DNA and oligosaccharide chains in the entry. The first graphic for a chain summarises the proportions of the various outlier classes displayed in the second graphic. The second graphic shows the sequence view annotated by issues in geometry and electron density. Residues are color-coded according to the number of geometric quality criteria for which they contain at least one outlier: green = 0, yellow = 1, orange = 2 and red = 3 or more. A red dot above a residue indicates a poor fit to the electron density ( $RSRZ > 2$ ). Stretches of 2 or more consecutive residues without any outlier are shown as a green connector. Residues present in the sample, but not in the model, are shown in grey.

#### • Molecule 1: Tyrosine-protein kinase ABL1



#### • Molecule 1: Tyrosine-protein kinase ABL1



## 4 Data and refinement statistics

Property	Value	Source
Space group	P 2 <sub>1</sub> 2 <sub>1</sub> 2 <sub>1</sub>	Depositor
Cell constants a, b, c, $\alpha$ , $\beta$ , $\gamma$	56.50Å 104.98Å 132.49Å 90.00° 90.00° 90.00°	Depositor
Resolution (Å)	42.99 – 2.45 42.99 – 2.45	Depositor EDS
% Data completeness (in resolution range)	99.9 (42.99-2.45) 99.9 (42.99-2.45)	Depositor EDS
$R_{merge}$	(Not available)	Depositor
$R_{sym}$	(Not available)	Depositor
$\langle I/\sigma(I) \rangle$ <sup>1</sup>	5.11 (at 2.45Å)	Xtriage
Refinement program	PHENIX 1.9_1692+SVN	Depositor
R, $R_{free}$	0.204 , 0.234 0.208 , 0.236	Depositor DCC
$R_{free}$ test set	27720 reflections (6.72%)	wwPDB-VP
Wilson B-factor (Å <sup>2</sup> )	31.1	Xtriage
Anisotropy	0.756	Xtriage
Bulk solvent $k_{sol}$ (e/Å <sup>3</sup> ), $B_{sol}$ (Å <sup>2</sup> )	0.35 , 41.3	EDS
L-test for twinning <sup>2</sup>	$\langle  L  \rangle = 0.50$ , $\langle L^2 \rangle = 0.33$	Xtriage
Estimated twinning fraction	No twinning to report.	Xtriage
$F_o, F_c$ correlation	0.93	EDS
Total number of atoms	4441	wwPDB-VP
Average B, all atoms (Å <sup>2</sup> )	39.0	wwPDB-VP

Xtriage's analysis on translational NCS is as follows: *The largest off-origin peak in the Patterson function is 5.40% of the height of the origin peak. No significant pseudotranslation is detected.*

<sup>1</sup>Intensities estimated from amplitudes.

<sup>2</sup>Theoretical values of  $\langle |L| \rangle$ ,  $\langle L^2 \rangle$  for acentric reflections are 0.5, 0.333 respectively for untwinned datasets, and 0.375, 0.2 for perfectly twinned datasets.

## 5 Model quality [i](#)

### 5.1 Standard geometry [i](#)

Bond lengths and bond angles in the following residue types are not validated in this section: QEW, PTR

The Z score for a bond length (or angle) is the number of standard deviations the observed value is removed from the expected value. A bond length (or angle) with  $|Z| > 5$  is considered an outlier worth inspection. RMSZ is the root-mean-square of all Z scores of the bond lengths (or angles).

Mol	Chain	Bond lengths		Bond angles	
		RMSZ	$\# Z  > 5$	RMSZ	$\# Z  > 5$
1	A	0.29	0/2182	0.68	0/2954
1	B	0.29	0/2077	0.71	1/2817 (0.0%)
All	All	0.29	0/4259	0.69	1/5771 (0.0%)

There are no bond length outliers.

All (1) bond angle outliers are listed below:

Mol	Chain	Res	Type	Atoms	Z	Observed(°)	Ideal(°)
1	B	241	ASP	N-CA-C	-6.01	105.44	112.89

There are no chirality outliers.

There are no planarity outliers.

### 5.2 Too-close contacts [i](#)

In the following table, the Non-H and H(model) columns list the number of non-hydrogen atoms and hydrogen atoms in the chain respectively. The H(added) column lists the number of hydrogen atoms added and optimized by MolProbity. The Clashes column lists the number of clashes within the asymmetric unit, whereas Symm-Clashes lists symmetry-related clashes.

Mol	Chain	Non-H	H(model)	H(added)	Clashes	Symm-Clashes
1	A	2145	0	2072	17	0
1	B	2045	0	1942	24	0
2	A	28	0	0	1	0
2	B	28	0	0	1	0
3	A	112	0	0	2	0
3	B	83	0	0	9	0
All	All	4441	0	4014	41	0

The all-atom clashscore is defined as the number of clashes found per 1000 atoms (including hydrogen atoms). The all-atom clashscore for this structure is 5.

All (41) close contacts within the same asymmetric unit are listed below, sorted by their clash magnitude.

Atom-1	Atom-2	Interatomic distance (Å)	Clash overlap (Å)
1:B:449:TYR:O	3:B:701:HOH:O	1.98	0.81
1:B:279:GLU:OE2	3:B:702:HOH:O	2.03	0.75
1:A:459:GLU:H	1:A:459:GLU:CD	2.08	0.61
1:A:362:ARG:NH1	1:A:393:PTR:O1P	2.31	0.59
1:B:334:GLU:OE2	3:B:703:HOH:O	2.17	0.59
1:A:329:GLU:OE1	3:A:701:HOH:O	2.17	0.57
1:B:255:GLU:HB3	1:B:272:THR:OG1	2.07	0.55
1:A:341:LEU:HD21	1:A:496:MET:HB3	1.87	0.55
1:B:293:ILE:O	3:B:704:HOH:O	2.18	0.54
1:B:347:ILE:HD13	1:B:428:LEU:HD21	1.90	0.54
1:B:374:ASN:O	3:B:705:HOH:O	2.19	0.53
1:B:236:GLU:HG3	1:B:304:VAL:HG23	1.90	0.53
1:A:320:TYR:HE2	1:A:373:GLU:HA	1.75	0.51
1:B:466:GLU:O	1:B:470:GLU:HG3	2.11	0.51
1:A:462:GLU:H	1:A:462:GLU:CD	2.18	0.51
1:A:318:MET:O	2:A:601:QEW:N3	2.45	0.50
1:B:453:GLU:N	3:B:701:HOH:O	2.41	0.49
1:B:472:MET:HE3	1:B:476:TRP:CH2	2.48	0.49
1:B:261:TRP:HZ2	1:B:314:ILE:HD13	1.78	0.48
1:B:403:ILE:HD12	1:B:403:ILE:H	1.79	0.48
1:B:282:GLU:O	1:B:286:GLU:HG3	2.13	0.47
1:B:318:MET:O	2:B:601:QEW:N3	2.48	0.47
1:A:333:GLN:NE2	3:A:703:HOH:O	2.24	0.47
1:A:347:ILE:HD13	1:A:428:LEU:HD21	1.96	0.47
1:B:243:THR:O	1:B:243:THR:OG1	2.32	0.47
1:B:255:GLU:OE2	1:B:257:TYR:OH	2.33	0.46
1:A:430:TRP:HD1	1:A:472:MET:HE1	1.81	0.46
1:B:477:GLN:HG3	3:B:740:HOH:O	2.16	0.45
1:B:381:ASP:N	1:B:381:ASP:OD1	2.49	0.45
1:A:295:HIS:CG	1:A:296:PRO:HD2	2.52	0.45
1:A:493:PHE:HA	1:A:496:MET:HE3	1.99	0.44
1:B:315:THR:HG21	1:B:382:PHE:HE1	1.83	0.43
1:A:381:ASP:OD1	1:A:381:ASP:N	2.51	0.43
1:A:271:LYS:HB3	1:A:313:ILE:HB	2.00	0.42
1:B:451:LEU:N	3:B:708:HOH:O	2.27	0.42
1:A:288:ALA:O	1:A:291:LYS:HG2	2.20	0.41
1:B:479:ASN:ND2	1:B:481:SER:OG	2.53	0.41

*Continued on next page...*



*Continued from previous page...*

Atom-1	Atom-2	Interatomic distance (Å)	Clash overlap (Å)
1:B:421:ASP:OD1	3:B:706:HOH:O	2.21	0.41
1:B:453:GLU:C	1:B:455:ASP:H	2.29	0.41
1:A:360:ILE:HD13	1:A:387:LEU:HD22	2.03	0.40
1:A:438:SER:HA	1:A:439:PRO:HD3	1.85	0.40

There are no symmetry-related clashes.

## 5.3 Torsion angles [i](#)

### 5.3.1 Protein backbone [i](#)

In the following table, the Percentiles column shows the percent Ramachandran outliers of the chain as a percentile score with respect to all X-ray entries followed by that with respect to entries of similar resolution.

The Analysed column shows the number of residues for which the backbone conformation was analysed, and the total number of residues.

Mol	Chain	Analysed	Favoured	Allowed	Outliers	Percentiles	
1	A	262/277 (95%)	253 (97%)	9 (3%)	0	100	100
1	B	250/277 (90%)	239 (96%)	11 (4%)	0	100	100
All	All	512/554 (92%)	492 (96%)	20 (4%)	0	100	100

There are no Ramachandran outliers to report.

### 5.3.2 Protein sidechains [i](#)

In the following table, the Percentiles column shows the percent sidechain outliers of the chain as a percentile score with respect to all X-ray entries followed by that with respect to entries of similar resolution.

The Analysed column shows the number of residues for which the sidechain conformation was analysed, and the total number of residues.

Mol	Chain	Analysed	Rotameric	Outliers	Percentiles	
1	A	222/239 (93%)	220 (99%)	2 (1%)	75	86
1	B	209/239 (87%)	205 (98%)	4 (2%)	52	67
All	All	431/478 (90%)	425 (99%)	6 (1%)	62	76

All (6) residues with a non-rotameric sidechain are listed below:

Mol	Chain	Res	Type
1	A	373	GLU
1	A	467	LYS
1	B	236	GLU
1	B	242	ILE
1	B	294	LYS
1	B	356	LYS

Sometimes sidechains can be flipped to improve hydrogen bonding and reduce clashes. All (3) such sidechains are listed below:

Mol	Chain	Res	Type
1	A	300	GLN
1	A	490	HIS
1	B	477	GLN

### 5.3.3 RNA ⓘ

There are no RNA molecules in this entry.

## 5.4 Non-standard residues in protein, DNA, RNA chains ⓘ

2 non-standard protein/DNA/RNA residues are modelled in this entry.

In the following table, the Counts columns list the number of bonds (or angles) for which Mogul statistics could be retrieved, the number of bonds (or angles) that are observed in the model and the number of bonds (or angles) that are defined in the Chemical Component Dictionary. The Link column lists molecule types, if any, to which the group is linked. The Z score for a bond length (or angle) is the number of standard deviations the observed value is removed from the expected value. A bond length (or angle) with  $|Z| > 2$  is considered an outlier worth inspection. RMSZ is the root-mean-square of all Z scores of the bond lengths (or angles).

Mol	Type	Chain	Res	Link	Bond lengths			Bond angles		
					Counts	RMSZ	$\# Z  > 2$	Counts	RMSZ	$\# Z  > 2$
1	PTR	B	393	1	15,16,17	1.25	1 (6%)	19,22,24	0.54	0
1	PTR	A	393	1	15,16,17	1.30	1 (6%)	19,22,24	0.62	0

In the following table, the Chirals column lists the number of chiral outliers, the number of chiral centers analysed, the number of these observed in the model and the number defined in the Chemical Component Dictionary. Similar counts are reported in the Torsion and Rings columns. '-' means no outliers of that kind were identified.

Mol	Type	Chain	Res	Link	Chirals	Torsions	Rings
1	PTR	B	393	1	-	1/10/11/13	0/1/1/1
1	PTR	A	393	1	-	0/10/11/13	0/1/1/1

All (2) bond length outliers are listed below:

Mol	Chain	Res	Type	Atoms	Z	Observed(Å)	Ideal(Å)
1	B	393	PTR	OH-CZ	-4.34	1.30	1.40
1	A	393	PTR	OH-CZ	-4.21	1.31	1.40

There are no bond angle outliers.

There are no chirality outliers.

All (1) torsion outliers are listed below:

Mol	Chain	Res	Type	Atoms
1	B	393	PTR	CZ-OH-P-O2P

There are no ring outliers.

1 monomer is involved in 1 short contact:

Mol	Chain	Res	Type	Clashes	Symm-Clashes
1	A	393	PTR	1	0

## 5.5 Carbohydrates [i](#)

There are no oligosaccharides in this entry.

## 5.6 Ligand geometry [i](#)

2 ligands are modelled in this entry.

In the following table, the Counts columns list the number of bonds (or angles) for which Mogul statistics could be retrieved, the number of bonds (or angles) that are observed in the model and the number of bonds (or angles) that are defined in the Chemical Component Dictionary. The Link column lists molecule types, if any, to which the group is linked. The Z score for a bond length (or angle) is the number of standard deviations the observed value is removed from the expected value. A bond length (or angle) with  $|Z| > 2$  is considered an outlier worth inspection. RMSZ is the root-mean-square of all Z scores of the bond lengths (or angles).

Mol	Type	Chain	Res	Link	Bond lengths			Bond angles		
					Counts	RMSZ	# Z  > 2	Counts	RMSZ	# Z  > 2
2	QEW	A	601	1	28,31,31	1.92	6 (21%)	34,43,43	2.00	9 (26%)

Mol	Type	Chain	Res	Link	Bond lengths			Bond angles		
					Counts	RMSZ	# Z  > 2	Counts	RMSZ	# Z  > 2
2	QEW	B	601	1	28,31,31	1.93	6 (21%)	34,43,43	2.01	9 (26%)

In the following table, the Chirals column lists the number of chiral outliers, the number of chiral centers analysed, the number of these observed in the model and the number defined in the Chemical Component Dictionary. Similar counts are reported in the Torsion and Rings columns. '-' means no outliers of that kind were identified.

Mol	Type	Chain	Res	Link	Chirals	Torsions	Rings
2	QEW	A	601	1	-	0/11/14/14	0/4/4/4
2	QEW	B	601	1	-	2/11/14/14	0/4/4/4

All (12) bond length outliers are listed below:

Mol	Chain	Res	Type	Atoms	Z	Observed(Å)	Ideal(Å)
2	A	601	QEW	C16-N3	5.59	1.46	1.36
2	B	601	QEW	C16-N3	5.58	1.46	1.36
2	B	601	QEW	C17-N4	3.80	1.43	1.35
2	A	601	QEW	C17-N4	3.64	1.42	1.35
2	A	601	QEW	C6-C7	3.38	1.42	1.36
2	B	601	QEW	C17-N3	3.36	1.44	1.37
2	B	601	QEW	C6-C7	3.31	1.42	1.36
2	A	601	QEW	C17-N3	3.21	1.44	1.37
2	A	601	QEW	C2-C3	2.89	1.48	1.41
2	B	601	QEW	C2-C3	2.80	1.48	1.41
2	A	601	QEW	O1-C7	2.54	1.41	1.37
2	B	601	QEW	O1-C7	2.49	1.41	1.37

All (18) bond angle outliers are listed below:

Mol	Chain	Res	Type	Atoms	Z	Observed(°)	Ideal(°)
2	B	601	QEW	C13-C14-S1	-5.65	104.36	111.85
2	A	601	QEW	C13-C14-S1	-5.35	104.75	111.85
2	B	601	QEW	C15-C14-S1	5.22	135.55	125.10
2	A	601	QEW	C15-C14-S1	4.99	135.09	125.10
2	B	601	QEW	O1-C7-C6	-4.17	119.85	125.24
2	A	601	QEW	O1-C7-C6	-4.02	120.04	125.24
2	A	601	QEW	N3-C17-N4	3.16	119.31	113.87
2	B	601	QEW	N3-C17-N4	3.01	119.05	113.87
2	B	601	QEW	C14-C13-N2	2.93	114.86	108.04
2	A	601	QEW	C14-C13-N2	2.91	114.82	108.04
2	B	601	QEW	O1-C7-C8	2.75	120.36	116.26
2	A	601	QEW	O1-C7-C8	2.68	120.25	116.26

Continued on next page...

*Continued from previous page...*

Mol	Chain	Res	Type	Atoms	Z	Observed(°)	Ideal(°)
2	A	601	QEW	C2-C1-N1	-2.48	120.59	123.81
2	A	601	QEW	C1-N1-C5	2.28	122.12	117.25
2	B	601	QEW	C2-C1-N1	-2.25	120.89	123.81
2	B	601	QEW	C1-N1-C5	2.18	121.91	117.25
2	B	601	QEW	O2-C19-C18	-2.04	119.52	125.42
2	A	601	QEW	O2-C19-C18	-2.03	119.55	125.42

There are no chirality outliers.

All (2) torsion outliers are listed below:

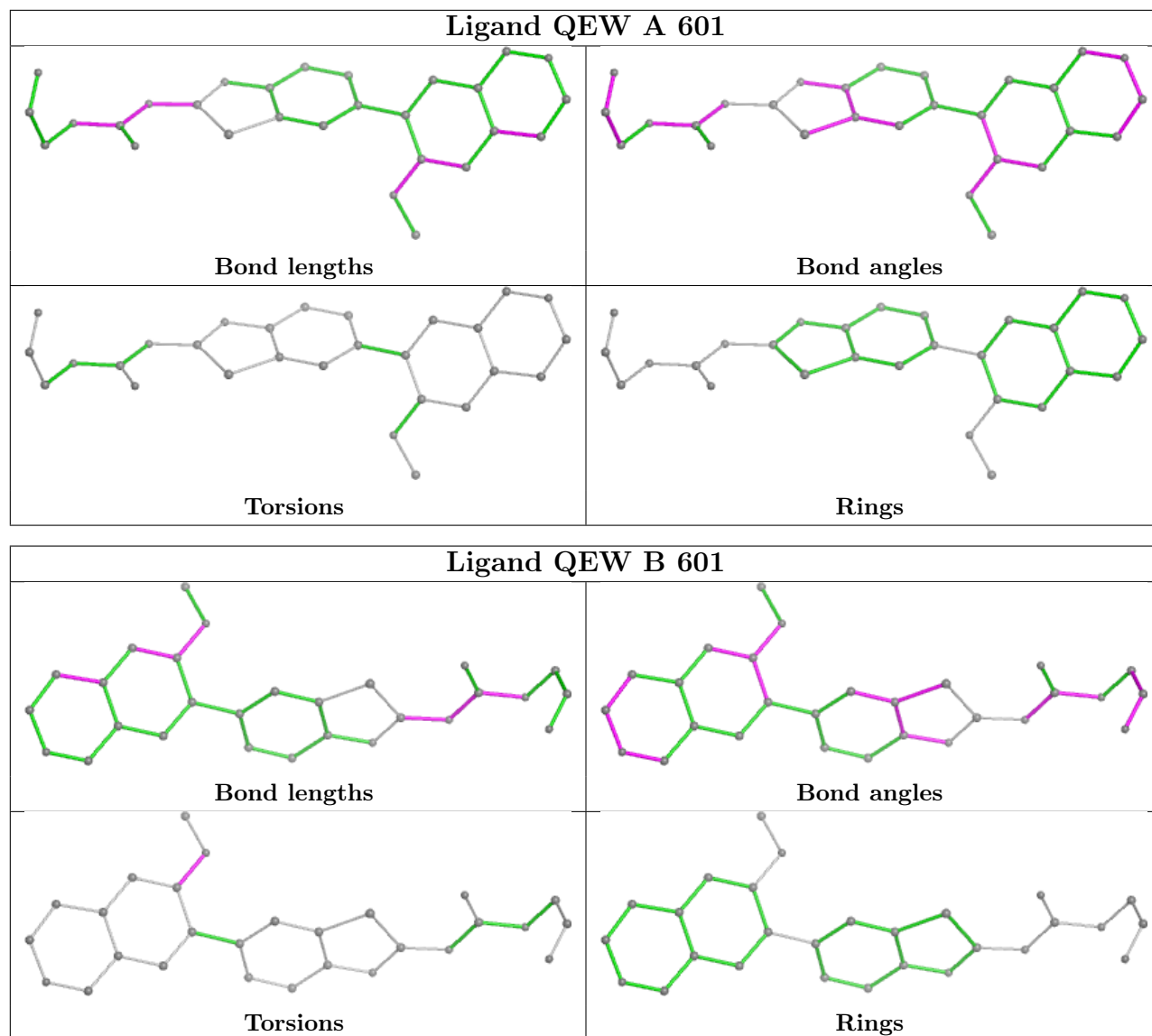
Mol	Chain	Res	Type	Atoms
2	B	601	QEW	C6-C7-O1-C20
2	B	601	QEW	C8-C7-O1-C20

There are no ring outliers.

2 monomers are involved in 2 short contacts:

Mol	Chain	Res	Type	Clashes	Symm-Clashes
2	A	601	QEW	1	0
2	B	601	QEW	1	0

The following is a two-dimensional graphical depiction of Mogul quality analysis of bond lengths, bond angles, torsion angles, and ring geometry for all instances of the Ligand of Interest. In addition, ligands with molecular weight > 250 and outliers as shown on the validation Tables will also be included. For torsion angles, if less than 5% of the Mogul distribution of torsion angles is within 10 degrees of the torsion angle in question, then that torsion angle is considered an outlier. Any bond that is central to one or more torsion angles identified as an outlier by Mogul will be highlighted in the graph. For rings, the root-mean-square deviation (RMSD) between the ring in question and similar rings identified by Mogul is calculated over all ring torsion angles. If the average RMSD is greater than 60 degrees and the minimal RMSD between the ring in question and any Mogul-identified rings is also greater than 60 degrees, then that ring is considered an outlier. The outliers are highlighted in purple. The color gray indicates Mogul did not find sufficient equivalents in the CSD to analyse the geometry.



## 5.7 Other polymers [i](#)

There are no such residues in this entry.

## 5.8 Polymer linkage issues [i](#)

There are no chain breaks in this entry.

## 6 Fit of model and data

### 6.1 Protein, DNA and RNA chains

In the following table, the column labelled ‘#RSRZ > 2’ contains the number (and percentage) of RSRZ outliers, followed by percent RSRZ outliers for the chain as percentile scores relative to all X-ray entries and entries of similar resolution. The OWAB column contains the minimum, median, 95<sup>th</sup> percentile and maximum values of the occupancy-weighted average B-factor per residue. The column labelled ‘Q < 0.9’ lists the number of (and percentage) of residues with an average occupancy less than 0.9.

Mol	Chain	Analysed	<RSRZ>	#RSRZ>2	OWAB(Å <sup>2</sup> )	Q<0.9
1	A	266/277 (96%)	0.23	18 (6%) 25 25	17, 32, 57, 74	0
1	B	256/277 (92%)	0.91	42 (16%) 5 5	22, 39, 80, 95	0
All	All	522/554 (94%)	0.56	60 (11%) 11 10	17, 36, 72, 95	0

All (60) RSRZ outliers are listed below:

Mol	Chain	Res	Type	RSRZ
1	B	261	TRP	9.1
1	B	312	TYR	7.1
1	A	462	GLU	5.1
1	B	397	ALA	4.6
1	B	239	ARG	4.6
1	B	242	ILE	4.5
1	B	272	THR	4.4
1	A	276	ASP	4.4
1	B	237	MET	4.2
1	B	273	LEU	4.2
1	B	447	GLN	4.1
1	B	305	CYS	4.0
1	A	277	THR	4.0
1	B	262	LYS	4.0
1	B	238	GLU	3.9
1	B	398	GLY	3.9
1	B	233	ASP	3.9
1	A	232	TYR	3.8
1	B	246	HIS	3.7
1	A	308	GLU	3.7
1	B	243	THR	3.6
1	A	500	SER	3.6
1	B	255	GLU	3.6
1	B	240	THR	3.6

*Continued on next page...*

*Continued from previous page...*

Mol	Chain	Res	Type	RSRZ
1	B	263	LYS	3.5
1	B	245	LYS	3.4
1	B	401	PHE	3.3
1	B	241	ASP	3.3
1	B	396	HIS	3.3
1	A	233	ASP	3.2
1	B	257	TYR	3.1
1	B	244	MET	3.1
1	A	390	GLY	3.0
1	A	307	ARG	3.0
1	B	453	GLU	3.0
1	B	260	VAL	3.0
1	B	266	LEU	2.9
1	B	264	TYR	2.9
1	A	389	THR	2.9
1	B	463	GLY	2.8
1	B	250	GLY	2.8
1	A	499	GLU	2.7
1	B	258	GLU	2.7
1	A	246	HIS	2.7
1	B	236	GLU	2.6
1	A	249	GLY	2.6
1	A	398	GLY	2.5
1	B	280	VAL	2.5
1	B	446	SER	2.5
1	B	249	GLY	2.4
1	B	251	GLY	2.4
1	B	286	GLU	2.4
1	B	300	GLN	2.4
1	A	278	MET	2.3
1	A	373	GLU	2.3
1	B	252	GLN	2.2
1	B	284	LEU	2.1
1	A	498	GLN	2.1
1	B	362	ARG	2.1
1	A	279	GLU	2.1

## 6.2 Non-standard residues in protein, DNA, RNA chains ⓘ

In the following table, the Atoms column lists the number of modelled atoms in the group and the number defined in the chemical component dictionary. The B-factors column lists the minimum, median, 95<sup>th</sup> percentile and maximum values of B factors of atoms in the group. The column



labelled 'Q< 0.9' lists the number of atoms with occupancy less than 0.9.

Mol	Type	Chain	Res	Atoms	RSCC	RSR	B-factors( $\text{\AA}^2$ )	Q<0.9
1	PTR	B	393	16/17	0.87	0.13	30,40,61,64	0
1	PTR	A	393	16/17	0.90	0.12	26,32,58,59	0

### 6.3 Carbohydrates [i](#)

There are no oligosaccharides in this entry.

### 6.4 Ligands [i](#)

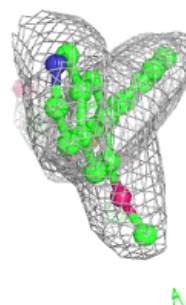
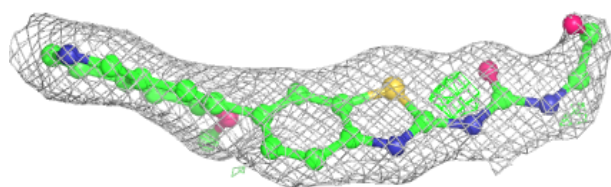
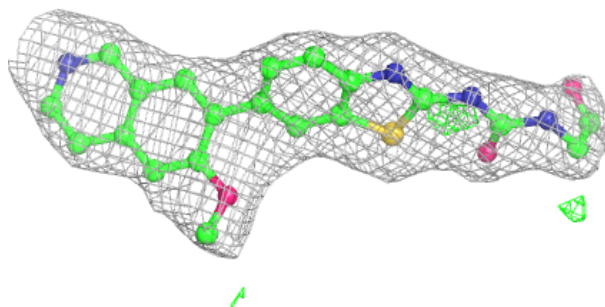
In the following table, the Atoms column lists the number of modelled atoms in the group and the number defined in the chemical component dictionary. The B-factors column lists the minimum, median, 95<sup>th</sup> percentile and maximum values of B factors of atoms in the group. The column labelled 'Q< 0.9' lists the number of atoms with occupancy less than 0.9.

Mol	Type	Chain	Res	Atoms	RSCC	RSR	B-factors( $\text{\AA}^2$ )	Q<0.9
2	QEW	B	601	28/28	0.93	0.12	43,48,54,59	0
2	QEW	A	601	28/28	0.96	0.08	23,29,34,51	0

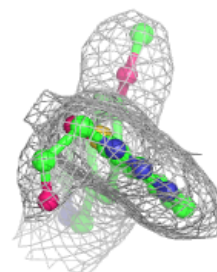
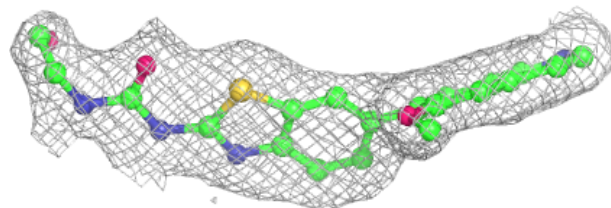
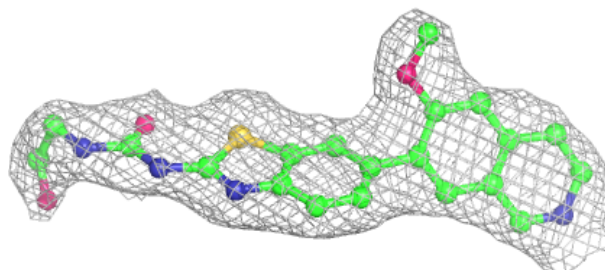
The following is a graphical depiction of the model fit to experimental electron density of all instances of the Ligand of Interest. In addition, ligands with molecular weight > 250 and outliers as shown on the geometry validation Tables will also be included. Each fit is shown from different orientation to approximate a three-dimensional view.

**Electron density around QEW B 601:**

$2mF_o-DF_c$  (at 0.7 rmsd) in gray  
 $mF_o-DF_c$  (at 3 rmsd) in purple (negative)  
and green (positive)

**Electron density around QEW A 601:**

$2mF_o-DF_c$  (at 0.7 rmsd) in gray  
 $mF_o-DF_c$  (at 3 rmsd) in purple (negative)  
and green (positive)



## 6.5 Other polymers [i](#)

There are no such residues in this entry.