



# Full wwPDB X-ray Structure Validation Report ⓘ

Jul 17, 2024 – 03:39 pm BST

PDB ID : 8PTA  
Title : JNK1 covalently bound to BD837 cyclohexenone based inhibitor  
Authors : Sok, P.; Poti, A.; Remenyi, A.  
Deposited on : 2023-07-13  
Resolution : 2.41 Å(reported)

This is a Full wwPDB X-ray Structure Validation Report for a publicly released PDB entry.

We welcome your comments at [validation@mail.wwpdb.org](mailto:validation@mail.wwpdb.org)

A user guide is available at

<https://www.wwpdb.org/validation/2017/XrayValidationReportHelp>

with specific help available everywhere you see the ⓘ symbol.

The types of validation reports are described at

<http://www.wwpdb.org/validation/2017/FAQs#types>.

---

The following versions of software and data (see [references ⓘ](#)) were used in the production of this report:

MolProbity : 4.02b-467  
Mogul : 1.8.4, CSD as541be (2020)  
Xtriage (Phenix) : 1.13  
EDS : 2.37.1  
buster-report : 1.1.7 (2018)  
Percentile statistics : 20191225.v01 (using entries in the PDB archive December 25th 2019)  
Refmac : 5.8.0158  
CCP4 : 7.0.044 (Gargrove)  
Ideal geometry (proteins) : Engh & Huber (2001)  
Ideal geometry (DNA, RNA) : Parkinson et al. (1996)  
Validation Pipeline (wwPDB-VP) : 2.37.1

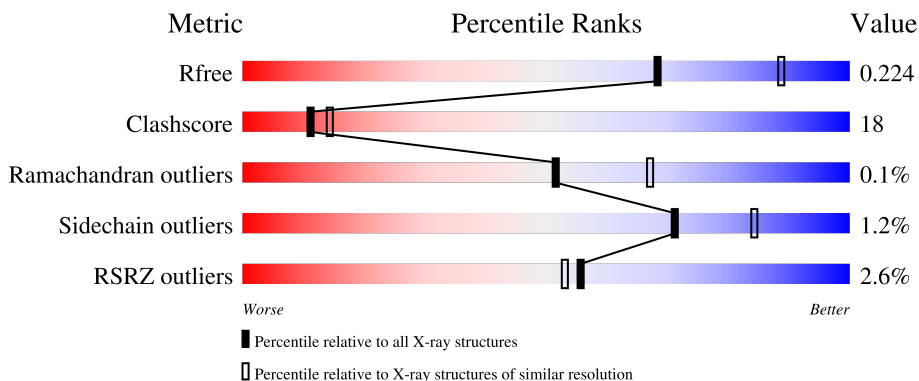
# 1 Overall quality at a glance

The following experimental techniques were used to determine the structure:

*X-RAY DIFFRACTION*

The reported resolution of this entry is 2.41 Å.

Percentile scores (ranging between 0-100) for global validation metrics of the entry are shown in the following graphic. The table shows the number of entries on which the scores are based.



Metric	Whole archive (#Entries)	Similar resolution (#Entries, resolution range(Å))
$R_{free}$	130704	4647 (2.44-2.40)
Clashscore	141614	5161 (2.44-2.40)
Ramachandran outliers	138981	5073 (2.44-2.40)
Sidechain outliers	138945	5074 (2.44-2.40)
RSRZ outliers	127900	4543 (2.44-2.40)

The table below summarises the geometric issues observed across the polymeric chains and their fit to the electron density. The red, orange, yellow and green segments of the lower bar indicate the fraction of residues that contain outliers for  $\geq 3$ , 2, 1 and 0 types of geometric quality criteria respectively. A grey segment represents the fraction of residues that are not modelled. The numeric value for each fraction is indicated below the corresponding segment, with a dot representing fractions  $\leq 5\%$ . The upper red bar (where present) indicates the fraction of residues that have poor fit to the electron density. The numeric value is given above the bar.

Mol	Chain	Length	Quality of chain
1	A	366	
1	B	366	
1	C	366	

## 2 Entry composition

There are 4 unique types of molecules in this entry. The entry contains 8442 atoms, of which 0 are hydrogens and 0 are deuteriums.

In the tables below, the ZeroOcc column contains the number of atoms modelled with zero occupancy, the AltConf column contains the number of residues with at least one atom in alternate conformation and the Trace column contains the number of residues modelled with at most 2 atoms.

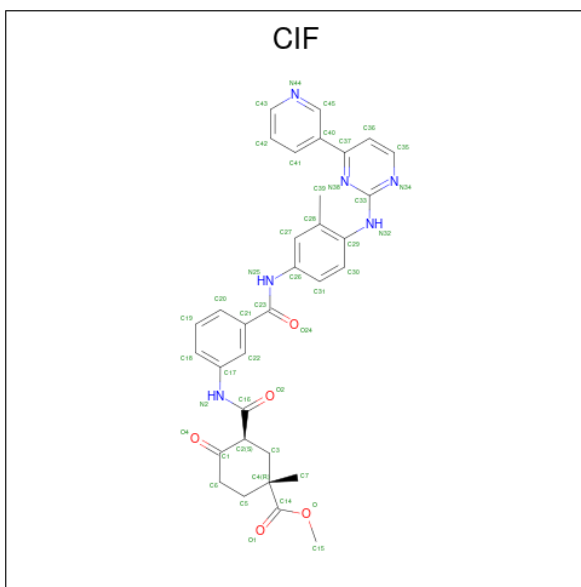
- Molecule 1 is a protein called Mitogen-activated protein kinase 8.

Mol	Chain	Residues	Atoms					ZeroOcc	AltConf	Trace
			Total	C	N	O	S			
1	A	354	2765	1781	456	507	21	0	0	0
1	B	352	2777	1790	460	507	20	0	0	0
1	C	351	2735	1758	456	502	19	0	0	0

There are 9 discrepancies between the modelled and reference sequences:

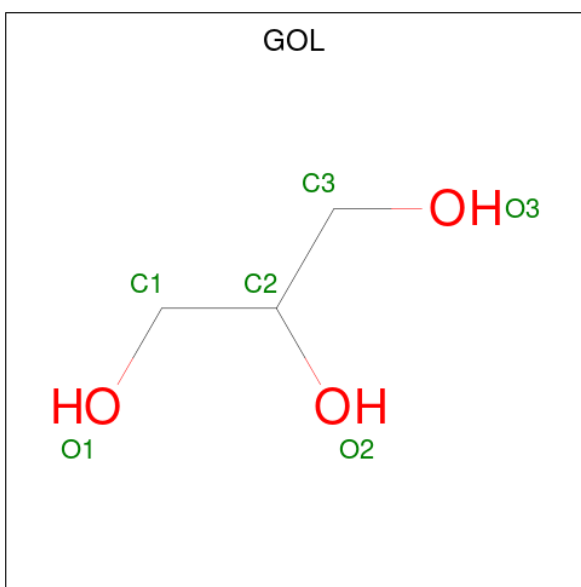
Chain	Residue	Modelled	Actual	Comment	Reference
A	-1	GLY	-	expression tag	UNP P45983
A	0	SER	-	expression tag	UNP P45983
A	208	ILE	LEU	variant	UNP P45983
B	-1	GLY	-	expression tag	UNP P45983
B	0	SER	-	expression tag	UNP P45983
B	208	ILE	LEU	variant	UNP P45983
C	-1	GLY	-	expression tag	UNP P45983
C	0	SER	-	expression tag	UNP P45983
C	208	ILE	LEU	variant	UNP P45983

- Molecule 2 is methyl (1R,3S)-1-methyl-3-[[[3-[[[3-methyl-4-[(4-pyridin-3-ylpyrimidin-2-yl)amino]phenyl]carbamoyl]phenyl]carbamoyl]-4-oxidanylidene-cyclohexane-1-carboxylate (three-letter code: CIF) (formula: C<sub>33</sub>H<sub>32</sub>N<sub>6</sub>O<sub>5</sub>) (labeled as "Ligand of Interest" by depositor).



Mol	Chain	Residues	Atoms				ZeroOcc	AltConf
			Total	C	N	O		
2	A	1	44	33	6	5	0	0
2	B	1	44	33	6	5	0	0
2	C	1	44	33	6	5	0	0

- Molecule 3 is GLYCEROL (three-letter code: GOL) (formula: C<sub>3</sub>H<sub>8</sub>O<sub>3</sub>).



Mol	Chain	Residues	Atoms			ZeroOcc	AltConf
			Total	C	O		
3	A	1	6	3	3	0	0

- Molecule 4 is water.

<b>Mol</b>	<b>Chain</b>	<b>Residues</b>	<b>Atoms</b>	<b>ZeroOcc</b>	<b>AltConf</b>
4	A	8	Total O 8 8	0	0
4	B	12	Total O 12 12	0	0
4	C	7	Total O 7 7	0	0

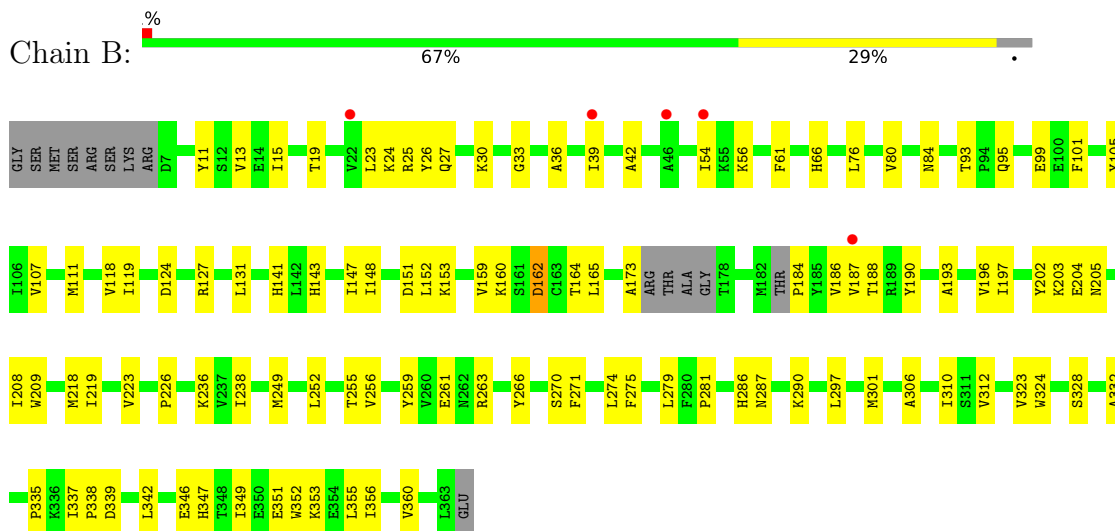
### 3 Residue-property plots [i](#)

These plots are drawn for all protein, RNA, DNA and oligosaccharide chains in the entry. The first graphic for a chain summarises the proportions of the various outlier classes displayed in the second graphic. The second graphic shows the sequence view annotated by issues in geometry and electron density. Residues are color-coded according to the number of geometric quality criteria for which they contain at least one outlier: green = 0, yellow = 1, orange = 2 and red = 3 or more. A red dot above a residue indicates a poor fit to the electron density ( $RSRZ > 2$ ). Stretches of 2 or more consecutive residues without any outlier are shown as a green connector. Residues present in the sample, but not in the model, are shown in grey.

- Molecule 1: Mitogen-activated protein kinase 8

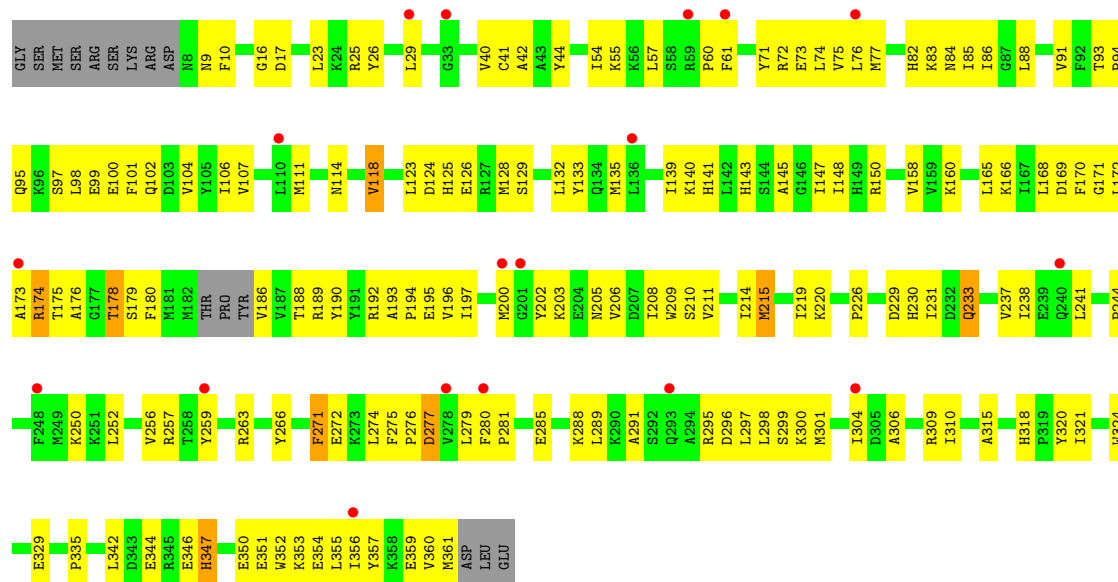


- Molecule 1: Mitogen-activated protein kinase 8



- Molecule 1: Mitogen-activated protein kinase 8





## 4 Data and refinement statistics i

Property	Value	Source
Space group	P 31	Depositor
Cell constants a, b, c, $\alpha$ , $\beta$ , $\gamma$	106.26Å 106.26Å 99.72Å 90.00° 90.00° 120.00°	Depositor
Resolution (Å)	46.89 – 2.41 46.89 – 2.41	Depositor EDS
% Data completeness (in resolution range)	99.8 (46.89-2.41) 99.7 (46.89-2.41)	Depositor EDS
$R_{merge}$	0.08	Depositor
$R_{sym}$	(Not available)	Depositor
$\langle I/\sigma(I) \rangle$ <sup>1</sup>	1.14 (at 2.42Å)	Xtrriage
Refinement program	PHENIX (1.20.1_4487: ???)	Depositor
R, $R_{free}$	0.210 , 0.226 0.213 , 0.224	Depositor DCC
$R_{free}$ test set	1976 reflections (4.07%)	wwPDB-VP
Wilson B-factor (Å <sup>2</sup> )	71.9	Xtrriage
Anisotropy	0.407	Xtrriage
Bulk solvent $k_{sol}$ (e/Å <sup>3</sup> ), $B_{sol}$ (Å <sup>2</sup> )	0.31 , 56.0	EDS
L-test for twinning <sup>2</sup>	$\langle  L  \rangle = 0.39$ , $\langle L^2 \rangle = 0.22$	Xtrriage
Estimated twinning fraction	0.458 for -h,-k,l 0.130 for h,-h-k,-l 0.129 for -k,-h,-l	Xtrriage
Reported twinning fraction	0.459 for -h,-k,l	Depositor
Outliers	0 of 48500 reflections	Xtrriage
$F_o, F_c$ correlation	0.96	EDS
Total number of atoms	8442	wwPDB-VP
Average B, all atoms (Å <sup>2</sup> )	84.0	wwPDB-VP

Xtrriage's analysis on translational NCS is as follows: *The largest off-origin peak in the Patterson function is 3.48% of the height of the origin peak. No significant pseudotranslation is detected.*

<sup>1</sup>Intensities estimated from amplitudes.

<sup>2</sup>Theoretical values of  $\langle |L| \rangle$ ,  $\langle L^2 \rangle$  for acentric reflections are 0.5, 0.333 respectively for untwinned datasets, and 0.375, 0.2 for perfectly twinned datasets.



## 5 Model quality [i](#)

### 5.1 Standard geometry [i](#)

Bond lengths and bond angles in the following residue types are not validated in this section: GOL, CIF

The Z score for a bond length (or angle) is the number of standard deviations the observed value is removed from the expected value. A bond length (or angle) with  $|Z| > 5$  is considered an outlier worth inspection. RMSZ is the root-mean-square of all Z scores of the bond lengths (or angles).

Mol	Chain	Bond lengths		Bond angles	
		RMSZ	# Z  >5	RMSZ	# Z  >5
1	A	0.33	0/2829	0.55	0/3844
1	B	0.36	0/2840	0.55	0/3851
1	C	0.39	0/2797	0.60	0/3799
All	All	0.36	0/8466	0.57	0/11494

There are no bond length outliers.

There are no bond angle outliers.

There are no chirality outliers.

There are no planarity outliers.

### 5.2 Too-close contacts [i](#)

In the following table, the Non-H and H(model) columns list the number of non-hydrogen atoms and hydrogen atoms in the chain respectively. The H(added) column lists the number of hydrogen atoms added and optimized by MolProbity. The Clashes column lists the number of clashes within the asymmetric unit, whereas Symm-Clashes lists symmetry-related clashes.

Mol	Chain	Non-H	H(model)	H(added)	Clashes	Symm-Clashes
1	A	2765	0	2697	78	0
1	B	2777	0	2737	74	0
1	C	2735	0	2668	139	0
2	A	44	0	0	2	0
2	B	44	0	0	6	0
2	C	44	0	0	3	0
3	A	6	0	8	0	0
4	A	8	0	0	0	0
4	B	12	0	0	0	0
4	C	7	0	0	0	0
All	All	8442	0	8110	296	0

The all-atom clashscore is defined as the number of clashes found per 1000 atoms (including hydrogen atoms). The all-atom clashscore for this structure is 18.

All (296) close contacts within the same asymmetric unit are listed below, sorted by their clash magnitude.

Atom-1	Atom-2	Interatomic distance (Å)	Clash overlap (Å)
1:C:72:ARG:HH22	1:C:172:LEU:HA	1.39	0.88
1:C:129:SER:HB2	1:C:324:TRP:HE1	1.41	0.85
1:B:111:MET:HE3	1:B:160:LYS:HG3	1.60	0.84
1:B:111:MET:H	2:B:401:CIF:C35	1.95	0.78
1:C:178:THR:HG23	1:C:180:PHE:H	1.49	0.77
1:C:189:ARG:HA	1:C:192:ARG:HG3	1.65	0.76
1:B:147:ILE:HD12	1:B:173:ALA:HB1	1.68	0.75
1:B:23:LEU:HD23	1:B:24:LYS:H	1.52	0.75
1:C:186:VAL:HB	1:C:188:THR:HG23	1.70	0.74
1:B:119:ILE:HG12	1:B:218:MET:HG2	1.71	0.73
1:C:75:VAL:HG23	1:C:76:LEU:HD12	1.71	0.72
1:B:118:VAL:HG21	1:B:159:VAL:HG21	1.71	0.70
1:B:337:ILE:HD12	1:B:338:PRO:HD2	1.73	0.70
1:C:351:GLU:O	1:C:354:GLU:HG2	1.92	0.69
1:C:195:GLU:HA	1:C:200:MET:HE3	1.75	0.68
1:C:280:PHE:HB3	1:C:281:PRO:HD2	1.76	0.67
1:C:241:LEU:HD21	1:C:271:PHE:CZ	2.30	0.67
1:A:89:LEU:HB2	1:A:107:VAL:HG23	1.76	0.66
1:C:220:LYS:HA	1:C:279:LEU:HD13	1.77	0.65
1:B:39:ILE:HB	1:B:56:LYS:HB3	1.79	0.64
1:C:83:LYS:HE3	1:C:329:GLU:HG2	1.79	0.64
1:C:57:LEU:HB3	1:C:104:VAL:HG23	1.79	0.64
1:A:189:ARG:HA	1:A:192:ARG:HG2	1.79	0.64
1:B:76:LEU:O	1:B:80:VAL:HG12	1.98	0.64
1:B:11:TYR:CE1	1:B:24:LYS:HA	2.32	0.63
1:B:19:THR:O	1:B:56:LYS:NZ	2.30	0.63
1:A:340:LYS:HA	1:A:343:ASP:HB2	1.81	0.62
1:C:219:ILE:HG22	1:C:279:LEU:HB3	1.81	0.62
1:A:303:VAL:O	1:A:309:ARG:NH1	2.32	0.62
1:C:301:MET:HG2	1:C:310:ILE:HD11	1.81	0.62
1:A:29:LEU:HD12	1:A:41:CYS:SG	2.40	0.61
1:A:40:VAL:HG12	1:A:55:LYS:HG3	1.83	0.61
1:C:342:LEU:HG	1:C:344:GLU:H	1.66	0.61
1:C:126:GLU:HG3	1:C:324:TRP:CH2	2.35	0.60
1:B:162:ASP:OD1	1:B:162:ASP:N	2.34	0.60
1:B:208:ILE:HD11	1:B:312:VAL:HG12	1.83	0.60
1:C:276:PRO:HD2	1:C:279:LEU:HD12	1.84	0.59

*Continued on next page...*

*Continued from previous page...*

Atom-1	Atom-2	Interatomic distance (Å)	Clash overlap (Å)
1:A:119:ILE:HG12	1:A:218:MET:HG2	1.85	0.59
1:A:252:LEU:HD12	1:A:253:GLN:H	1.67	0.58
1:C:189:ARG:HA	1:C:192:ARG:CG	2.34	0.58
1:C:193:ALA:HA	1:C:209:TRP:CD1	2.39	0.58
1:B:30:LYS:O	1:B:42:ALA:N	2.32	0.58
1:C:169:ASP:OD1	1:C:170:PHE:N	2.37	0.58
1:C:194:PRO:HD3	1:C:209:TRP:CD2	2.38	0.58
1:B:148:ILE:HD11	1:B:204:GLU:HG2	1.86	0.58
1:A:213:CYS:HA	1:A:224:LEU:HD12	1.87	0.57
1:C:111:MET:O	2:C:401:CIF:N32	2.38	0.57
1:C:180:PHE:HE2	1:C:196:VAL:HB	1.69	0.57
1:A:156:ASN:ND2	1:A:169:ASP:OD2	2.38	0.57
1:B:259:TYR:CZ	1:B:263:ARG:HD2	2.40	0.57
1:C:126:GLU:HG3	1:C:324:TRP:HH2	1.69	0.57
1:C:178:THR:OG1	1:C:179:SER:N	2.39	0.56
1:A:192:ARG:NH2	1:A:196:VAL:HG21	2.21	0.56
1:C:219:ILE:HG22	1:C:279:LEU:CB	2.35	0.56
1:A:25:ARG:O	1:A:45:ASP:HA	2.06	0.56
1:C:310:ILE:HD13	1:C:315:ALA:HB2	1.88	0.56
1:C:252:LEU:HB3	1:C:257:ARG:HB2	1.88	0.56
1:C:128:MET:O	1:C:132:LEU:HG	2.06	0.56
1:B:23:LEU:HD22	1:B:25:ARG:HG2	1.88	0.55
1:C:296:ASP:O	1:C:300:LYS:HG3	2.05	0.55
1:C:73:GLU:HG3	1:C:74:LEU:N	2.22	0.55
1:A:71:TYR:CE1	1:A:355:LEU:HG	2.41	0.55
2:B:401:CIF:N38	2:B:401:CIF:C39	2.70	0.55
1:C:125:HIS:CD2	1:C:281:PRO:HG3	2.41	0.55
1:B:339:ASP:HA	1:B:342:LEU:HB3	1.88	0.55
1:B:226:PRO:O	1:B:236:LYS:NZ	2.33	0.55
1:C:147:ILE:HG23	1:C:173:ALA:HA	1.89	0.55
1:C:241:LEU:HD21	1:C:271:PHE:HZ	1.72	0.55
1:C:158:VAL:HG13	1:C:168:LEU:HD11	1.87	0.55
1:C:189:ARG:O	1:C:233:GLN:NE2	2.40	0.55
1:B:23:LEU:HD23	1:B:24:LYS:N	2.20	0.54
1:C:98:LEU:HA	1:C:101:PHE:HB2	1.89	0.54
1:C:209:TRP:HB2	1:C:309:ARG:NH1	2.22	0.54
1:C:99:GLU:HG2	1:C:100:GLU:HG3	1.89	0.54
1:C:271:PHE:HA	1:C:274:LEU:HB2	1.90	0.54
2:A:401:CIF:C33	2:A:401:CIF:C39	2.85	0.54
2:A:401:CIF:C39	2:A:401:CIF:N38	2.71	0.54
1:C:72:ARG:HG2	1:C:76:LEU:HD13	1.90	0.54

*Continued on next page...*

*Continued from previous page...*

Atom-1	Atom-2	Interatomic distance (Å)	Clash overlap (Å)
1:B:202:TYR:O	1:B:203:LYS:HD2	2.08	0.53
2:C:401:CIF:C39	2:C:401:CIF:C33	2.85	0.53
1:C:190:TYR:CD1	1:C:226:PRO:HA	2.43	0.53
1:C:244:PRO:HG3	1:C:304:ILE:HG21	1.89	0.53
1:B:39:ILE:HG13	1:B:56:LYS:HD2	1.91	0.53
1:C:72:ARG:O	1:C:75:VAL:HG22	2.08	0.53
1:C:91:VAL:HG23	1:C:106:ILE:HG22	1.91	0.53
1:C:215:MET:O	1:C:219:ILE:HD12	2.09	0.53
1:B:271:PHE:HA	1:B:274:LEU:HB2	1.91	0.53
1:A:232:ASP:OD1	1:A:236:LYS:NZ	2.42	0.53
1:C:150:ARG:NH2	1:C:173:ALA:O	2.41	0.53
1:C:205:ASN:HB2	1:C:309:ARG:HD2	1.90	0.53
1:A:252:LEU:HD12	1:A:253:GLN:N	2.24	0.52
1:B:271:PHE:O	1:B:275:PHE:N	2.35	0.52
1:C:297:LEU:HD13	1:C:318:HIS:CG	2.45	0.52
1:A:141:HIS:CE1	1:A:335:PRO:HG3	2.44	0.52
1:B:124:ASP:OD2	1:B:127:ARG:NE	2.42	0.52
1:A:64:GLN:NE2	1:A:347:HIS:O	2.38	0.52
1:A:68:LYS:HD3	1:A:346:GLU:HG2	1.92	0.52
1:C:29:LEU:HA	1:C:42:ALA:O	2.10	0.52
1:C:220:LYS:HD2	1:C:279:LEU:CD1	2.40	0.52
1:C:350:GLU:O	1:C:353:LYS:HB3	2.10	0.52
1:B:141:HIS:CE1	1:B:335:PRO:HD3	2.44	0.52
1:C:238:ILE:HD12	1:C:266:TYR:CD2	2.45	0.52
1:A:249:MET:HG2	1:A:260:VAL:HG11	1.91	0.52
1:C:210:SER:O	1:C:214:ILE:HG13	2.10	0.52
1:A:25:ARG:HB2	1:A:45:ASP:OD1	2.10	0.51
1:A:118:VAL:HG12	1:A:123:LEU:HD11	1.92	0.51
1:A:84:ASN:HA	1:A:165:LEU:O	2.10	0.51
1:B:61:PHE:CE2	1:B:353:LYS:HD3	2.44	0.51
1:C:203:LYS:O	1:C:206:VAL:HG12	2.11	0.51
1:B:160:LYS:HE3	1:B:164:THR:OG1	2.10	0.51
1:A:29:LEU:HA	1:A:42:ALA:O	2.10	0.51
1:C:202:TYR:O	1:C:203:LYS:NZ	2.34	0.51
1:B:111:MET:N	2:B:401:CIF:C35	2.70	0.50
1:C:77:MET:SD	1:C:88:LEU:HB2	2.52	0.50
1:C:57:LEU:HB3	1:C:104:VAL:CG2	2.41	0.50
1:B:238:ILE:HG13	1:B:266:TYR:CD2	2.47	0.49
1:B:33:GLY:O	1:B:36:ALA:N	2.41	0.49
1:B:143:HIS:CD2	1:B:148:ILE:HD13	2.47	0.49
1:C:54:ILE:HG22	1:C:107:VAL:HB	1.95	0.49

*Continued on next page...*

*Continued from previous page...*

Atom-1	Atom-2	Interatomic distance (Å)	Clash overlap (Å)
1:C:97:SER:O	1:C:101:PHE:N	2.45	0.49
1:A:228:THR:HG22	1:A:232:ASP:OD2	2.12	0.49
1:C:272:GLU:O	1:C:276:PRO:HA	2.13	0.49
1:C:194:PRO:O	1:C:197:ILE:HG22	2.11	0.49
1:C:55:LYS:HB3	1:C:106:ILE:HG12	1.95	0.49
1:C:9:ASN:O	1:C:23:LEU:HA	2.13	0.48
1:C:129:SER:CB	1:C:324:TRP:HE1	2.21	0.48
1:B:119:ILE:HG12	1:B:218:MET:CG	2.43	0.48
1:C:271:PHE:CE2	1:C:299:SER:HA	2.49	0.48
1:A:318:HIS:CD2	1:A:319:PRO:HD2	2.49	0.48
1:C:72:ARG:NH2	1:C:171:GLY:O	2.46	0.48
1:A:66:HIS:HE1	1:A:183:THR:HG23	1.78	0.48
1:A:300:LYS:HB3	1:A:310:ILE:CG2	2.43	0.48
1:C:10:PHE:CE2	1:C:94:PRO:HA	2.48	0.48
1:C:272:GLU:OE1	1:C:272:GLU:N	2.47	0.48
1:A:27:GLN:HG2	1:A:28:ASN:H	1.78	0.48
1:A:25:ARG:HH21	1:A:48:LEU:HD13	1.78	0.48
1:C:195:GLU:CD	1:C:195:GLU:H	2.17	0.48
1:A:325:TYR:HE1	1:A:330:ALA:HB3	1.79	0.47
1:C:61:PHE:HZ	1:C:101:PHE:CE2	2.31	0.47
1:C:359:GLU:C	1:C:361:MET:N	2.66	0.47
1:C:40:VAL:HG11	2:C:401:CIF:C42	2.45	0.47
1:A:132:LEU:HA	1:A:135:MET:HE2	1.96	0.47
1:B:54:ILE:HG12	1:B:107:VAL:HG12	1.96	0.47
1:C:72:ARG:HG2	1:C:76:LEU:CD1	2.44	0.47
1:C:300:LYS:O	1:C:310:ILE:HG13	2.16	0.47
1:C:277:ASP:OD1	1:C:277:ASP:N	2.48	0.46
1:B:13:VAL:HG12	1:B:15:ILE:HG23	1.97	0.46
1:B:152:LEU:HD12	1:B:152:LEU:HA	1.82	0.46
1:B:328:SER:O	1:B:332:ALA:HB2	2.15	0.46
1:C:141:HIS:CD2	1:C:335:PRO:HD3	2.50	0.46
1:C:346:GLU:HG2	1:C:347:HIS:N	2.31	0.46
1:A:346:GLU:HA	1:A:352:TRP:HZ2	1.80	0.46
1:B:187:VAL:O	1:B:187:VAL:HG22	2.15	0.46
1:C:61:PHE:CE1	1:C:353:LYS:HA	2.50	0.46
1:A:295:ARG:HA	1:A:298:LEU:HD12	1.98	0.46
1:B:11:TYR:OH	1:B:27:GLN:HA	2.15	0.46
1:A:32:ILE:HD12	1:A:32:ILE:HA	1.82	0.46
1:A:52:VAL:HG11	1:A:107:VAL:HB	1.98	0.46
1:C:172:LEU:HD21	1:C:176:ALA:HB3	1.97	0.45
1:B:351:GLU:O	1:B:355:LEU:N	2.40	0.45

*Continued on next page...*

*Continued from previous page...*

Atom-1	Atom-2	Interatomic distance (Å)	Clash overlap (Å)
1:B:281:PRO:O	1:B:287:ASN:HB3	2.16	0.45
1:C:280:PHE:CB	1:C:281:PRO:HD2	2.46	0.45
1:C:135:MET:O	1:C:139:ILE:HG23	2.17	0.45
1:C:197:ILE:HD11	1:C:230:HIS:CE1	2.51	0.45
1:C:259:TYR:O	1:C:263:ARG:HG2	2.17	0.45
1:B:153:LYS:HD2	1:B:188:THR:HG21	1.97	0.45
1:C:208:ILE:O	1:C:211:VAL:HG22	2.17	0.45
1:B:99:GLU:CD	1:B:99:GLU:H	2.20	0.45
1:C:95:GLN:NE2	1:C:102:GLN:HB3	2.32	0.45
1:C:193:ALA:HB3	1:C:196:VAL:HG22	1.98	0.45
1:C:229:ASP:OD1	1:C:231:ILE:HD12	2.17	0.45
1:A:36:ALA:C	1:A:38:GLY:H	2.19	0.45
1:A:240:GLN:HA	1:A:269:TYR:HD1	1.82	0.45
1:A:312:VAL:HG23	1:A:313:ASP:OD1	2.17	0.45
1:C:357:TYR:O	1:C:360:VAL:HG12	2.17	0.45
1:A:340:LYS:CA	1:A:343:ASP:HB2	2.45	0.44
1:A:36:ALA:C	1:A:38:GLY:N	2.71	0.44
1:C:256:VAL:O	1:C:259:TYR:N	2.50	0.44
1:B:346:GLU:OE1	1:B:346:GLU:N	2.45	0.44
1:B:356:ILE:O	1:B:360:VAL:HG22	2.18	0.44
1:C:275:PHE:O	1:C:295:ARG:HD3	2.16	0.44
1:A:259:TYR:OH	1:A:263:ARG:NH2	2.51	0.44
1:C:205:ASN:ND2	1:C:306:ALA:O	2.50	0.44
1:A:300:LYS:HB3	1:A:310:ILE:HG23	2.00	0.44
1:B:11:TYR:CD1	1:B:24:LYS:HA	2.51	0.44
1:B:84:ASN:HA	1:B:165:LEU:O	2.18	0.44
1:C:82:HIS:O	1:C:85:ILE:HG13	2.16	0.44
1:C:86:ILE:HA	1:C:166:LYS:HD3	1.98	0.44
1:A:277:ASP:OD1	1:A:295:ARG:NH2	2.51	0.44
1:C:143:HIS:CE1	1:C:148:ILE:HA	2.53	0.44
1:A:29:LEU:HD11	1:A:54:ILE:HD12	1.99	0.43
1:A:182:MET:HB3	1:A:184:PRO:HD2	2.00	0.43
1:A:208:ILE:HG23	1:A:301:MET:HE2	1.98	0.43
1:C:61:PHE:HE1	1:C:353:LYS:HA	1.83	0.43
1:B:93:THR:HG22	1:B:95:GLN:O	2.17	0.43
1:C:114:ASN:O	1:C:118:VAL:HG12	2.18	0.43
1:C:145:ALA:HB2	1:C:335:PRO:HG2	2.01	0.43
1:A:65:THR:HB	1:A:184:PRO:HG2	2.00	0.43
1:A:112:ASP:OD2	1:A:161:SER:OG	2.33	0.43
1:A:297:LEU:O	1:A:301:MET:HG2	2.18	0.43
1:C:41:CYS:SG	1:C:54:ILE:HD11	2.58	0.43

*Continued on next page...*

*Continued from previous page...*

Atom-1	Atom-2	Interatomic distance (Å)	Clash overlap (Å)
1:C:310:ILE:HD12	1:C:310:ILE:O	2.17	0.43
1:C:132:LEU:O	1:C:135:MET:HG2	2.18	0.43
1:C:140:LYS:HB3	1:C:140:LYS:HE3	1.45	0.43
1:A:72:ARG:NH2	1:A:170:PHE:O	2.52	0.43
1:C:23:LEU:HB2	1:C:25:ARG:HG2	2.00	0.43
1:C:76:LEU:HB3	1:C:170:PHE:CD2	2.54	0.43
1:A:208:ILE:O	1:A:211:VAL:HG22	2.19	0.43
1:B:252:LEU:HD22	1:B:256:VAL:CG2	2.49	0.43
2:B:401:CIF:C39	2:B:401:CIF:C33	2.97	0.43
1:C:220:LYS:HD2	1:C:279:LEU:HD13	2.01	0.43
1:A:271:PHE:HA	1:A:274:LEU:HB2	2.01	0.42
1:B:205:ASN:ND2	1:B:306:ALA:HB1	2.34	0.42
1:A:32:ILE:O	1:A:32:ILE:HG23	2.18	0.42
1:A:86:ILE:HA	1:A:166:LYS:HD3	2.00	0.42
1:B:323:VAL:HG23	1:B:324:TRP:CD1	2.54	0.42
1:B:111:MET:N	2:B:401:CIF:N34	2.51	0.42
1:C:26:TYR:HA	1:C:44:TYR:O	2.20	0.42
1:C:71:TYR:CE1	1:C:355:LEU:HG	2.54	0.42
1:A:205:ASN:OD1	1:A:306:ALA:HB1	2.19	0.42
1:A:279:LEU:C	1:A:279:LEU:HD13	2.40	0.42
1:C:170:PHE:N	1:C:170:PHE:CD1	2.86	0.42
1:C:237:VAL:O	1:C:241:LEU:HB2	2.18	0.42
1:A:271:PHE:CE2	1:A:299:SER:HA	2.55	0.42
1:B:297:LEU:O	1:B:301:MET:HG3	2.19	0.42
1:A:219:ILE:HG21	1:A:280:PHE:CZ	2.54	0.42
1:A:152:LEU:HD12	1:A:152:LEU:HA	1.81	0.42
1:A:346:GLU:HA	1:A:352:TRP:CZ2	2.54	0.42
1:B:301:MET:HG2	1:B:310:ILE:CG2	2.49	0.42
1:C:76:LEU:HB3	1:C:170:PHE:CE2	2.54	0.42
1:C:190:TYR:HD1	1:C:226:PRO:HA	1.82	0.42
1:A:8:ASN:N	1:A:8:ASN:HD22	2.17	0.42
1:A:43:ALA:N	1:A:52:VAL:O	2.51	0.42
1:A:203:LYS:HA	1:A:203:LYS:HD3	1.73	0.42
1:A:238:ILE:H	1:A:238:ILE:HG13	1.63	0.42
1:B:66:HIS:HD2	1:B:184:PRO:HG3	1.84	0.42
1:B:148:ILE:HD12	1:B:204:GLU:HA	2.02	0.42
1:B:249:MET:SD	1:B:261:GLU:HG2	2.60	0.42
1:C:84:ASN:HA	1:C:165:LEU:O	2.19	0.42
1:C:170:PHE:N	1:C:170:PHE:HD1	2.17	0.42
1:C:57:LEU:CB	1:C:104:VAL:HG23	2.47	0.42
1:C:150:ARG:NH2	1:C:172:LEU:HB3	2.35	0.42

*Continued on next page...*



*Continued from previous page...*

Atom-1	Atom-2	Interatomic distance (Å)	Clash overlap (Å)
1:C:301:MET:CG	1:C:310:ILE:HD11	2.49	0.42
1:C:57:LEU:HD12	1:C:60:PRO:HG3	2.02	0.42
1:B:347:HIS:HB2	1:B:352:TRP:CE2	2.55	0.41
1:C:125:HIS:HD1	1:C:320:TYR:HE1	1.67	0.41
1:C:276:PRO:CD	1:C:279:LEU:HD12	2.50	0.41
1:A:229:ASP:OD1	1:A:231:ILE:HD12	2.20	0.41
1:C:285:GLU:O	1:C:289:LEU:N	2.43	0.41
1:B:131:LEU:HD22	1:B:165:LEU:HD12	2.03	0.41
1:C:203:LYS:HD3	1:C:203:LYS:HA	1.72	0.41
1:A:11:TYR:CD1	1:A:24:LYS:HA	2.54	0.41
1:B:93:THR:HG21	1:B:101:PHE:HD2	1.84	0.41
1:A:272:GLU:H	1:A:272:GLU:HG3	1.71	0.41
1:A:337:ILE:HB	1:A:340:LYS:CB	2.51	0.41
1:B:151:ASP:OD1	1:B:186:VAL:HG21	2.20	0.41
1:B:286:HIS:O	1:B:290:LYS:HG2	2.21	0.41
1:C:359:GLU:C	1:C:361:MET:H	2.24	0.41
1:B:25:ARG:HG3	1:B:26:TYR:CD2	2.55	0.41
1:A:193:ALA:HA	1:A:209:TRP:CD1	2.56	0.41
1:B:61:PHE:HB2	1:B:349:ILE:HG13	2.03	0.41
1:B:162:ASP:HB2	1:B:164:THR:HG23	2.03	0.41
1:A:11:TYR:OH	1:A:27:GLN:HA	2.21	0.41
1:A:49:GLU:N	1:A:49:GLU:OE1	2.54	0.41
1:B:56:LYS:HB2	1:B:105:TYR:CE2	2.56	0.41
1:B:193:ALA:HA	1:B:209:TRP:CD1	2.56	0.41
1:C:93:THR:HG21	1:C:101:PHE:CE1	2.56	0.41
1:C:172:LEU:HA	1:C:172:LEU:HD12	1.92	0.41
1:C:215:MET:HG2	1:C:298:LEU:HD11	2.02	0.41
1:C:219:ILE:HG21	1:C:280:PHE:CE1	2.55	0.41
1:C:238:ILE:HD12	1:C:266:TYR:HD2	1.86	0.41
1:A:27:GLN:HG2	1:A:28:ASN:N	2.35	0.41
1:B:147:ILE:HG23	1:B:173:ALA:HA	2.02	0.41
1:C:174:ARG:HG3	1:C:175:THR:CG2	2.51	0.41
1:C:288:LYS:O	1:C:291:ALA:HB3	2.21	0.41
1:A:254:PRO:O	1:A:258:THR:HG23	2.21	0.40
1:B:193:ALA:O	1:B:196:VAL:HG22	2.22	0.40
1:B:219:ILE:HG22	1:B:279:LEU:HB3	2.03	0.40
1:C:133:TYR:HB2	1:C:321:ILE:HG23	2.02	0.40
1:C:160:LYS:HB2	1:C:160:LYS:HE3	1.83	0.40
1:A:139:ILE:HD11	1:A:152:LEU:CD2	2.52	0.40
1:A:279:LEU:HD13	1:A:279:LEU:O	2.22	0.40
1:B:190:TYR:CD2	1:B:223:VAL:HG11	2.56	0.40

*Continued on next page...*



Continued from previous page...

Atom-1	Atom-2	Interatomic distance (Å)	Clash overlap (Å)
1:B:193:ALA:O	1:B:197:ILE:HG12	2.21	0.40
1:C:16:GLY:O	1:C:17:ASP:HB2	2.22	0.40
1:C:352:TRP:O	1:C:356:ILE:HG13	2.21	0.40
1:C:123:LEU:HB3	1:C:124:ASP:H	1.78	0.40
1:A:70:ALA:O	1:A:74:LEU:HG	2.21	0.40
1:A:294:ALA:HB2	1:A:320:TYR:CE2	2.57	0.40
1:A:338:PRO:O	1:B:270:SER:HB2	2.22	0.40
1:B:301:MET:HG2	1:B:310:ILE:HG21	2.04	0.40
2:B:401:CIF:O2	2:B:401:CIF:C18	2.67	0.40
1:C:101:PHE:CE2	1:C:357:TYR:HB2	2.56	0.40
1:C:275:PHE:CE2	1:C:298:LEU:HD13	2.56	0.40
1:C:178:THR:HG23	1:C:180:PHE:N	2.27	0.40
1:C:188:THR:OG1	1:C:192:ARG:NH2	2.54	0.40

There are no symmetry-related clashes.

## 5.3 Torsion angles [i](#)

### 5.3.1 Protein backbone [i](#)

In the following table, the Percentiles column shows the percent Ramachandran outliers of the chain as a percentile score with respect to all X-ray entries followed by that with respect to entries of similar resolution.

The Analysed column shows the number of residues for which the backbone conformation was analysed, and the total number of residues.

Mol	Chain	Analysed	Favoured	Allowed	Outliers	Percentiles	
1	A	350/366 (96%)	340 (97%)	10 (3%)	0	100	100
1	B	346/366 (94%)	336 (97%)	10 (3%)	0	100	100
1	C	347/366 (95%)	336 (97%)	10 (3%)	1 (0%)	41	54
All	All	1043/1098 (95%)	1012 (97%)	30 (3%)	1 (0%)	51	67

All (1) Ramachandran outliers are listed below:

Mol	Chain	Res	Type
1	C	178	THR

### 5.3.2 Protein sidechains [i](#)

In the following table, the Percentiles column shows the percent sidechain outliers of the chain as a percentile score with respect to all X-ray entries followed by that with respect to entries of similar resolution.

The Analysed column shows the number of residues for which the sidechain conformation was analysed, and the total number of residues.

Mol	Chain	Analysed	Rotameric	Outliers	Percentiles	
1	A	295/327 (90%)	294 (100%)	1 (0%)	92	97
1	B	299/327 (91%)	297 (99%)	2 (1%)	84	92
1	C	290/327 (89%)	282 (97%)	8 (3%)	43	62
All	All	884/981 (90%)	873 (99%)	11 (1%)	71	84

All (11) residues with a non-rotameric sidechain are listed below:

Mol	Chain	Res	Type
1	A	108	MET
1	B	162	ASP
1	B	255	THR
1	C	118	VAL
1	C	174	ARG
1	C	215	MET
1	C	233	GLN
1	C	250	LYS
1	C	271	PHE
1	C	277	ASP
1	C	347	HIS

Sometimes sidechains can be flipped to improve hydrogen bonding and reduce clashes. There are no such sidechains identified.

### 5.3.3 RNA [i](#)

There are no RNA molecules in this entry.

## 5.4 Non-standard residues in protein, DNA, RNA chains [i](#)

There are no non-standard protein/DNA/RNA residues in this entry.

## 5.5 Carbohydrates [i](#)

There are no monosaccharides in this entry.

## 5.6 Ligand geometry [i](#)

4 ligands are modelled in this entry.

In the following table, the Counts columns list the number of bonds (or angles) for which Mogul statistics could be retrieved, the number of bonds (or angles) that are observed in the model and the number of bonds (or angles) that are defined in the Chemical Component Dictionary. The Link column lists molecule types, if any, to which the group is linked. The Z score for a bond length (or angle) is the number of standard deviations the observed value is removed from the expected value. A bond length (or angle) with  $|Z| > 2$  is considered an outlier worth inspection. RMSZ is the root-mean-square of all Z scores of the bond lengths (or angles).

Mol	Type	Chain	Res	Link	Bond lengths			Bond angles		
					Counts	RMSZ	# Z  > 2	Counts	RMSZ	# Z  > 2
2	CIF	C	401	1	47,48,48	2.06	15 (31%)	62,68,68	2.18	17 (27%)
3	GOL	A	402	-	5,5,5	0.91	0	5,5,5	1.07	0
2	CIF	A	401	1	47,48,48	1.94	13 (27%)	62,68,68	2.22	18 (29%)
2	CIF	B	401	1	47,48,48	2.02	15 (31%)	62,68,68	2.28	19 (30%)

In the following table, the Chirals column lists the number of chiral outliers, the number of chiral centers analysed, the number of these observed in the model and the number defined in the Chemical Component Dictionary. Similar counts are reported in the Torsion and Rings columns. '2' means no outliers of that kind were identified.

Mol	Type	Chain	Res	Link	Chirals	Torsions	Rings
2	CIF	C	401	1	-	16/32/47/47	0/5/5/5
3	GOL	A	402	-	-	2/4/4/4	-
2	CIF	A	401	1	-	12/32/47/47	0/5/5/5
2	CIF	B	401	1	-	12/32/47/47	0/5/5/5

All (43) bond length outliers are listed below:

Mol	Chain	Res	Type	Atoms	Z	Observed(Å)	Ideal(Å)
2	A	401	CIF	O-C14	6.25	1.45	1.33
2	B	401	CIF	C26-N25	-4.89	1.31	1.41
2	B	401	CIF	O-C14	4.39	1.41	1.33
2	C	401	CIF	O-C14	4.30	1.41	1.33
2	A	401	CIF	C17-N2	-4.29	1.32	1.41
2	C	401	CIF	C17-N2	-4.22	1.33	1.41

*Continued on next page...*

*Continued from previous page...*

Mol	Chain	Res	Type	Atoms	Z	Observed(Å)	Ideal(Å)
2	C	401	CIF	C26-N25	-4.10	1.33	1.41
2	A	401	CIF	C26-N25	-4.03	1.33	1.41
2	B	401	CIF	C17-N2	-3.51	1.34	1.41
2	C	401	CIF	C3-C4	-3.43	1.50	1.54
2	C	401	CIF	C29-C28	-3.13	1.34	1.40
2	B	401	CIF	C3-C4	-3.01	1.50	1.54
2	C	401	CIF	C22-C21	-2.77	1.35	1.39
2	B	401	CIF	C23-N25	-2.74	1.28	1.35
2	B	401	CIF	C27-C26	-2.72	1.35	1.39
2	A	401	CIF	C27-C26	-2.51	1.35	1.39
2	B	401	CIF	C27-C28	-2.50	1.35	1.39
2	C	401	CIF	C33-N34	-2.50	1.31	1.34
2	C	401	CIF	C20-C21	-2.48	1.35	1.39
2	A	401	CIF	C27-C28	-2.48	1.35	1.39
2	B	401	CIF	C29-N32	-2.41	1.33	1.39
2	A	401	CIF	C29-C28	-2.36	1.35	1.40
2	A	401	CIF	C33-N34	-2.34	1.31	1.34
2	C	401	CIF	C27-C28	-2.30	1.36	1.39
2	C	401	CIF	C27-C26	-2.30	1.35	1.39
2	A	401	CIF	C18-C17	-2.29	1.35	1.39
2	B	401	CIF	C4-C14	-2.27	1.46	1.53
2	A	401	CIF	C22-C17	-2.26	1.35	1.39
2	C	401	CIF	C5-C4	-2.25	1.49	1.54
2	C	401	CIF	C29-N32	-2.25	1.33	1.39
2	C	401	CIF	C22-C17	-2.20	1.35	1.39
2	C	401	CIF	C33-N32	-2.20	1.32	1.36
2	B	401	CIF	C20-C21	-2.15	1.35	1.39
2	B	401	CIF	O24-C23	-2.14	1.19	1.23
2	A	401	CIF	C23-N25	-2.12	1.30	1.35
2	B	401	CIF	O-C15	-2.12	1.40	1.45
2	C	401	CIF	C16-N2	-2.11	1.30	1.35
2	B	401	CIF	C29-C28	-2.10	1.36	1.40
2	B	401	CIF	C5-C4	-2.07	1.50	1.54
2	A	401	CIF	C29-N32	-2.05	1.34	1.39
2	B	401	CIF	C31-C26	-2.03	1.35	1.39
2	A	401	CIF	C16-N2	-2.03	1.31	1.35
2	A	401	CIF	C33-N32	-2.02	1.32	1.36

All (54) bond angle outliers are listed below:

Mol	Chain	Res	Type	Atoms	Z	Observed(°)	Ideal(°)
2	C	401	CIF	N34-C33-N38	-6.85	120.06	126.55

*Continued on next page...*

*Continued from previous page...*

Mol	Chain	Res	Type	Atoms	Z	Observed(°)	Ideal(°)
2	B	401	CIF	C37-N38-C33	6.84	122.32	116.69
2	A	401	CIF	N34-C33-N38	-6.70	120.20	126.55
2	A	401	CIF	C37-N38-C33	6.69	122.20	116.69
2	B	401	CIF	N34-C33-N38	-6.62	120.28	126.55
2	C	401	CIF	C35-N34-C33	6.59	121.29	115.45
2	A	401	CIF	C5-C6-C1	-5.64	99.06	112.49
2	A	401	CIF	C35-N34-C33	5.48	120.31	115.45
2	C	401	CIF	C5-C6-C1	-5.05	100.46	112.49
2	B	401	CIF	C35-N34-C33	5.04	119.92	115.45
2	B	401	CIF	O4-C1-C2	-4.85	115.70	122.09
2	C	401	CIF	C37-N38-C33	4.72	120.58	116.69
2	C	401	CIF	C17-N2-C16	-4.34	117.01	127.40
2	C	401	CIF	O-C14-O1	-4.23	116.52	123.93
2	B	401	CIF	C5-C6-C1	-3.96	103.05	112.49
2	B	401	CIF	C5-C4-C3	3.69	116.65	109.27
2	B	401	CIF	C28-C29-N32	3.48	125.28	118.70
2	B	401	CIF	C19-C18-C17	3.47	123.88	119.72
2	C	401	CIF	C40-C37-N38	3.39	120.83	116.02
2	B	401	CIF	C39-C28-C29	3.37	125.06	121.25
2	B	401	CIF	C6-C5-C4	-3.36	108.75	112.75
2	A	401	CIF	C30-C29-C28	-3.29	116.89	120.77
2	A	401	CIF	C17-N2-C16	-3.20	119.73	127.40
2	A	401	CIF	C6-C5-C4	-3.14	109.02	112.75
2	C	401	CIF	O-C14-C4	3.12	120.76	112.50
2	A	401	CIF	C28-C29-N32	3.02	124.42	118.70
2	C	401	CIF	C39-C28-C29	-2.99	117.88	121.25
2	C	401	CIF	C6-C5-C4	-2.96	109.23	112.75
2	A	401	CIF	C5-C4-C3	2.94	115.13	109.27
2	A	401	CIF	C36-C37-N38	-2.90	118.21	121.97
2	B	401	CIF	C5-C4-C14	-2.89	105.17	111.05
2	B	401	CIF	O-C14-C4	2.89	120.14	112.50
2	C	401	CIF	C27-C28-C29	2.88	121.67	118.22
2	C	401	CIF	C36-C35-N34	-2.83	120.44	123.96
2	B	401	CIF	C36-C37-N38	-2.76	118.39	121.97
2	C	401	CIF	C43-N44-C45	2.75	121.60	116.85
2	B	401	CIF	C36-C35-N34	-2.74	120.56	123.96
2	A	401	CIF	O-C14-C4	2.73	119.72	112.50
2	B	401	CIF	C30-C29-N32	-2.64	115.95	121.39
2	A	401	CIF	O-C14-O1	-2.63	119.32	123.93
2	A	401	CIF	C39-C28-C29	2.59	124.18	121.25
2	A	401	CIF	C39-C28-C27	-2.56	114.75	119.49
2	B	401	CIF	C20-C21-C22	2.55	122.25	119.24

*Continued on next page...*

*Continued from previous page...*

Mol	Chain	Res	Type	Atoms	Z	Observed(°)	Ideal(°)
2	B	401	CIF	C39-C28-C27	-2.51	114.85	119.49
2	B	401	CIF	O-C14-O1	-2.49	119.56	123.93
2	C	401	CIF	C30-C29-C28	-2.46	117.86	120.77
2	A	401	CIF	C27-C28-C29	2.37	121.06	118.22
2	A	401	CIF	C36-C35-N34	-2.35	121.03	123.96
2	C	401	CIF	C5-C4-C3	2.21	113.68	109.27
2	C	401	CIF	C42-C41-C40	-2.19	117.80	120.56
2	B	401	CIF	C18-C17-C22	-2.19	117.05	119.65
2	A	401	CIF	C15-O-C14	2.16	119.58	115.94
2	C	401	CIF	O24-C23-C21	-2.10	117.19	120.94
2	A	401	CIF	C29-N32-C33	-2.03	123.48	129.60

There are no chirality outliers.

All (42) torsion outliers are listed below:

Mol	Chain	Res	Type	Atoms
2	A	401	CIF	O2-C16-C2-C1
2	A	401	CIF	O1-C14-C4-C3
2	A	401	CIF	O-C14-C4-C7
2	A	401	CIF	O-C14-C4-C3
2	A	401	CIF	C28-C29-N32-C33
2	A	401	CIF	C30-C29-N32-C33
2	B	401	CIF	N2-C16-C2-C1
2	B	401	CIF	O2-C16-C2-C1
2	B	401	CIF	C28-C29-N32-C33
2	B	401	CIF	C30-C29-N32-C33
2	C	401	CIF	N2-C16-C2-C1
2	C	401	CIF	O2-C16-C2-C1
2	C	401	CIF	O1-C14-C4-C7
2	C	401	CIF	O-C14-C4-C7
2	C	401	CIF	C28-C29-N32-C33
2	C	401	CIF	C30-C29-N32-C33
2	A	401	CIF	C2-C16-N2-C17
2	C	401	CIF	C2-C16-N2-C17
2	A	401	CIF	O2-C16-N2-C17
2	C	401	CIF	O2-C16-N2-C17
3	A	402	GOL	O1-C1-C2-C3
2	A	401	CIF	N38-C33-N32-C29
2	A	401	CIF	O1-C14-C4-C7
2	C	401	CIF	O1-C14-C4-C3
2	B	401	CIF	C31-C26-N25-C23
2	C	401	CIF	O-C14-C4-C3

*Continued on next page...*

*Continued from previous page...*

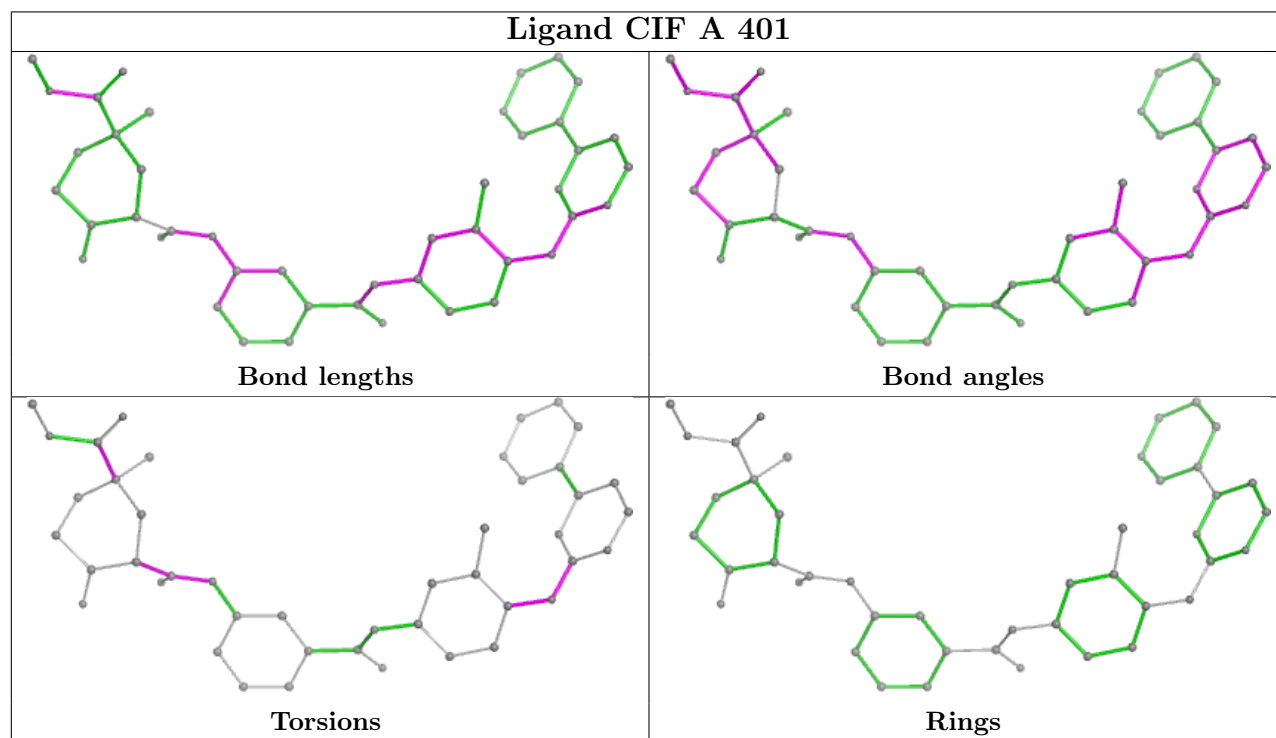
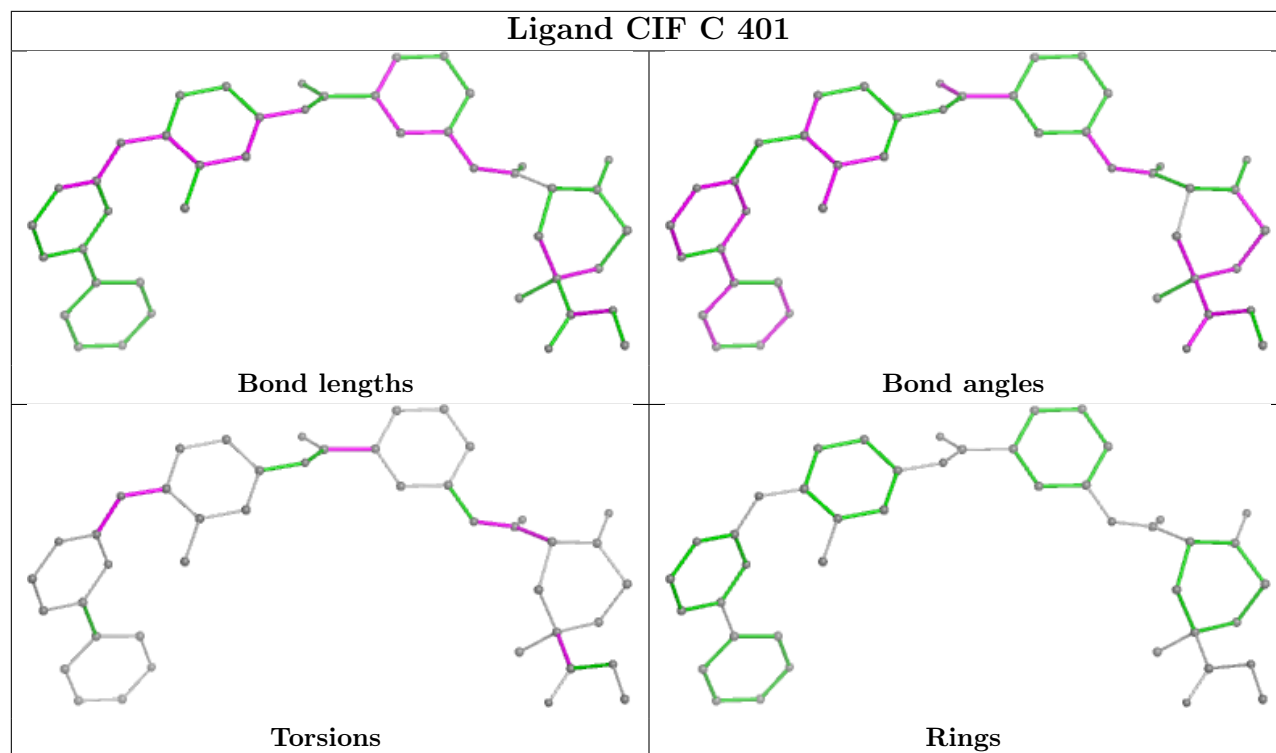
Mol	Chain	Res	Type	Atoms
2	A	401	CIF	N34-C33-N32-C29
2	B	401	CIF	C27-C26-N25-C23
2	B	401	CIF	O1-C14-C4-C3
2	B	401	CIF	O-C14-C4-C3
2	B	401	CIF	O1-C14-C4-C7
2	A	401	CIF	N2-C16-C2-C1
2	B	401	CIF	O-C14-C4-C7
2	B	401	CIF	O2-C16-C2-C3
2	C	401	CIF	O2-C16-C2-C3
3	A	402	GOL	O1-C1-C2-O2
2	B	401	CIF	N2-C16-C2-C3
2	C	401	CIF	N38-C33-N32-C29
2	C	401	CIF	N2-C16-C2-C3
2	C	401	CIF	C20-C21-C23-N25
2	C	401	CIF	C20-C21-C23-O24
2	C	401	CIF	N34-C33-N32-C29

There are no ring outliers.

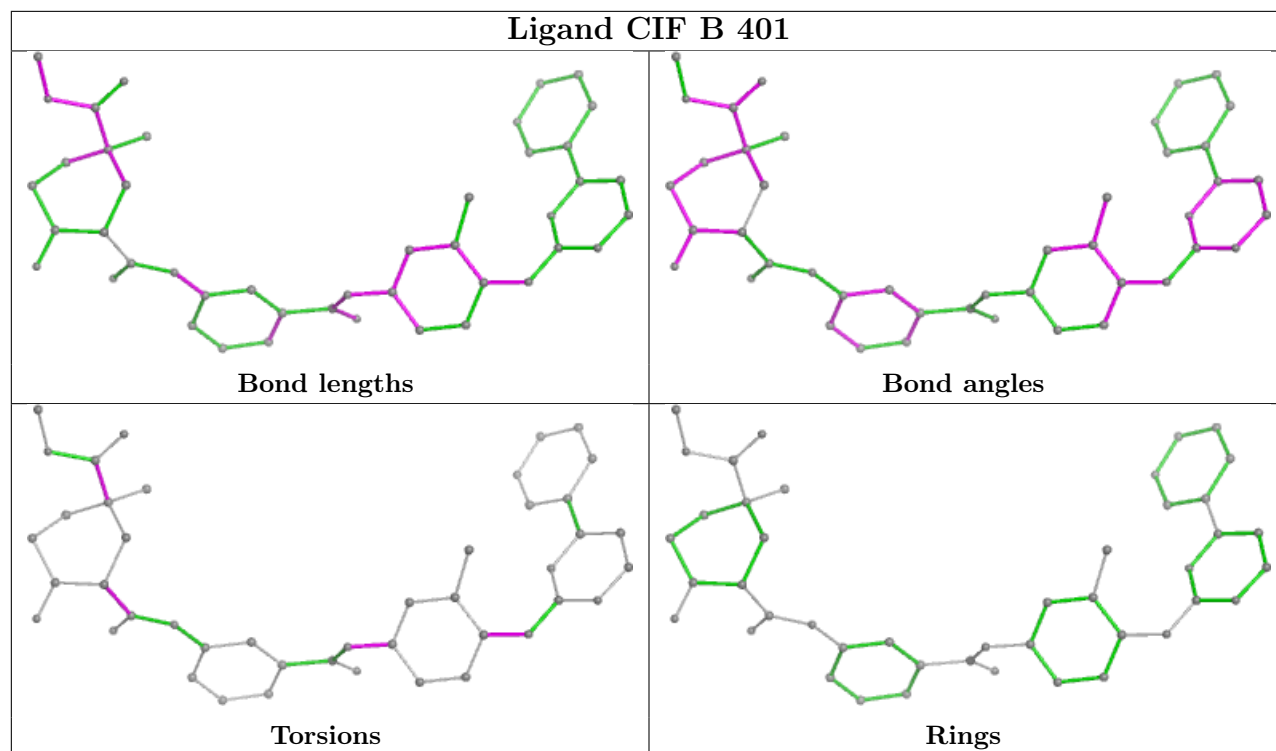
3 monomers are involved in 11 short contacts:

Mol	Chain	Res	Type	Clashes	Symm-Clashes
2	C	401	CIF	3	0
2	A	401	CIF	2	0
2	B	401	CIF	6	0

The following is a two-dimensional graphical depiction of Mogul quality analysis of bond lengths, bond angles, torsion angles, and ring geometry for all instances of the Ligand of Interest. In addition, ligands with molecular weight > 250 and outliers as shown on the validation Tables will also be included. For torsion angles, if less than 5% of the Mogul distribution of torsion angles is within 10 degrees of the torsion angle in question, then that torsion angle is considered an outlier. Any bond that is central to one or more torsion angles identified as an outlier by Mogul will be highlighted in the graph. For rings, the root-mean-square deviation (RMSD) between the ring in question and similar rings identified by Mogul is calculated over all ring torsion angles. If the average RMSD is greater than 60 degrees and the minimal RMSD between the ring in question and any Mogul-identified rings is also greater than 60 degrees, then that ring is considered an outlier. The outliers are highlighted in purple. The color gray indicates Mogul did not find sufficient equivalents in the CSD to analyse the geometry.







## 5.7 Other polymers [i](#)

There are no such residues in this entry.

## 5.8 Polymer linkage issues [i](#)

There are no chain breaks in this entry.

## 6 Fit of model and data

### 6.1 Protein, DNA and RNA chains

In the following table, the column labelled ‘#RSRZ > 2’ contains the number (and percentage) of RSRZ outliers, followed by percent RSRZ outliers for the chain as percentile scores relative to all X-ray entries and entries of similar resolution. The OWAB column contains the minimum, median, 95<sup>th</sup> percentile and maximum values of the occupancy-weighted average B-factor per residue. The column labelled ‘Q < 0.9’ lists the number of (and percentage) of residues with an average occupancy less than 0.9.

Mol	Chain	Analysed	<RSRZ>	#RSRZ>2	OWAB(Å <sup>2</sup> )	Q<0.9
1	A	354/366 (96%)	-0.03	5 (1%) 75 73	55, 76, 104, 159	0
1	B	352/366 (96%)	0.02	5 (1%) 75 73	51, 74, 107, 129	0
1	C	351/366 (95%)	0.29	18 (5%) 28 26	71, 96, 129, 183	0
All	All	1057/1098 (96%)	0.09	28 (2%) 56 53	51, 83, 117, 183	0

All (28) RSRZ outliers are listed below:

Mol	Chain	Res	Type	RSRZ
1	C	248	PHE	7.0
1	A	16	GLY	7.0
1	C	59	ARG	4.7
1	B	39	ILE	3.9
1	C	304	ILE	3.7
1	C	356	ILE	3.6
1	C	200	MET	3.5
1	C	173	ALA	3.4
1	C	76	LEU	2.9
1	C	278	VAL	2.8
1	C	259	TYR	2.7
1	B	187	VAL	2.7
1	C	280	PHE	2.7
1	C	29	LEU	2.7
1	C	33	GLY	2.7
1	C	293	GLN	2.6
1	B	22	VAL	2.5
1	C	201	GLY	2.5
1	A	91	VAL	2.4
1	A	297	LEU	2.3
1	C	240	GLN	2.3
1	C	136	LEU	2.2
1	B	46	ALA	2.1

*Continued on next page...*

*Continued from previous page...*

Mol	Chain	Res	Type	RSRZ
1	A	233	GLN	2.1
1	C	110	LEU	2.1
1	A	17	ASP	2.0
1	B	54	ILE	2.0
1	C	61	PHE	2.0

## 6.2 Non-standard residues in protein, DNA, RNA chains [i](#)

There are no non-standard protein/DNA/RNA residues in this entry.

## 6.3 Carbohydrates [i](#)

There are no monosaccharides in this entry.

## 6.4 Ligands [i](#)

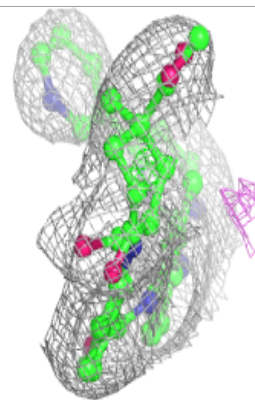
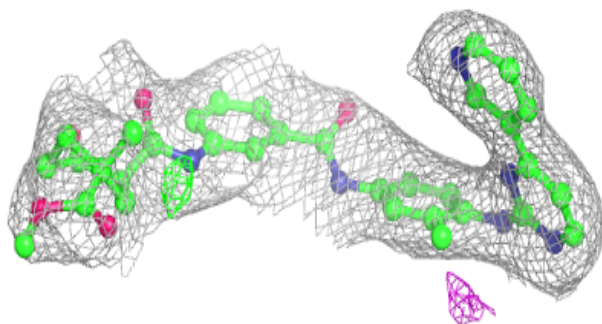
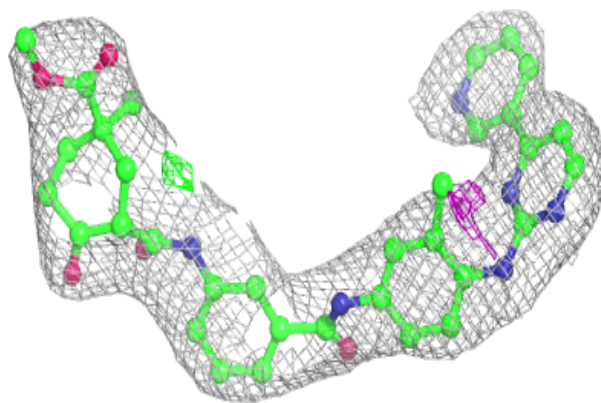
In the following table, the Atoms column lists the number of modelled atoms in the group and the number defined in the chemical component dictionary. The B-factors column lists the minimum, median, 95<sup>th</sup> percentile and maximum values of B factors of atoms in the group. The column labelled 'Q< 0.9' lists the number of atoms with occupancy less than 0.9.

Mol	Type	Chain	Res	Atoms	RSCC	RSR	B-factors(Å <sup>2</sup> )	Q<0.9
3	GOL	A	402	6/6	0.89	0.10	61,62,66,69	0
2	CIF	A	401	44/44	0.92	0.16	63,77,92,110	0
2	CIF	C	401	44/44	0.93	0.15	72,81,86,87	0
2	CIF	B	401	44/44	0.93	0.14	71,78,92,110	0

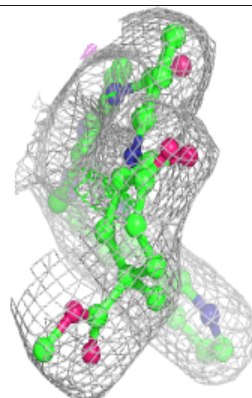
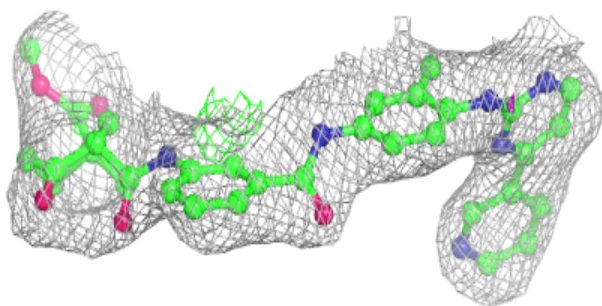
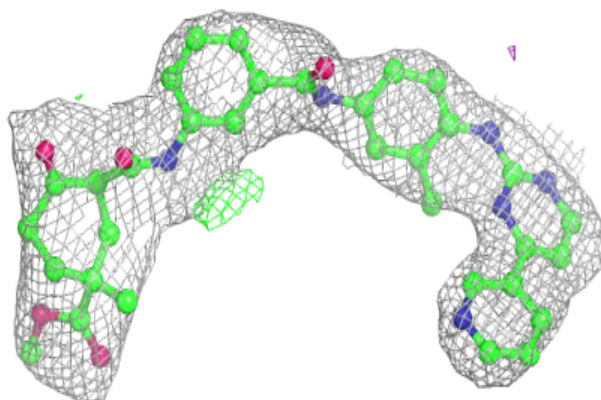
The following is a graphical depiction of the model fit to experimental electron density of all instances of the Ligand of Interest. In addition, ligands with molecular weight > 250 and outliers as shown on the geometry validation Tables will also be included. Each fit is shown from different orientation to approximate a three-dimensional view.

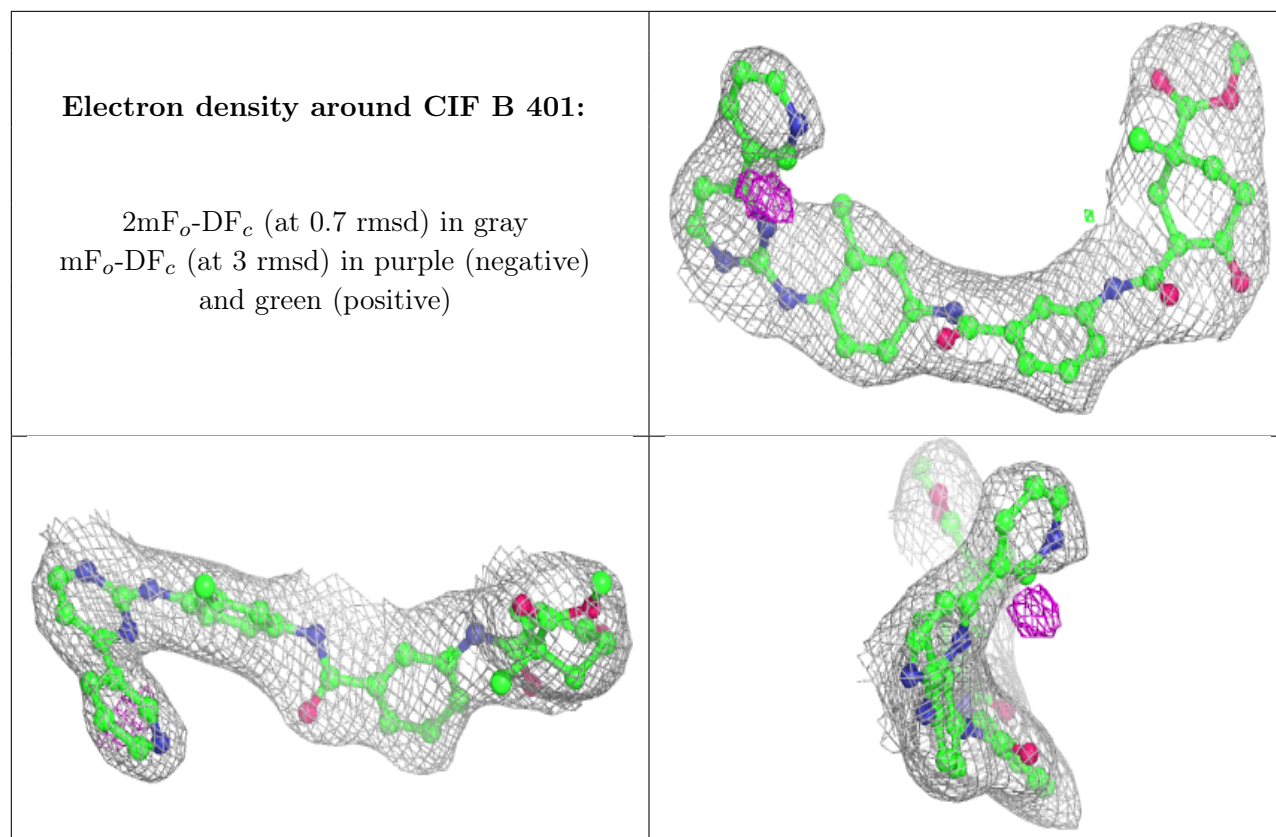
**Electron density around CIF A 401:**

$2mF_o-DF_c$  (at 0.7 rmsd) in gray  
 $mF_o-DF_c$  (at 3 rmsd) in purple (negative)  
and green (positive)

**Electron density around CIF C 401:**

$2mF_o-DF_c$  (at 0.7 rmsd) in gray  
 $mF_o-DF_c$  (at 3 rmsd) in purple (negative)  
and green (positive)





## 6.5 Other polymers [i](#)

There are no such residues in this entry.