



Full wwPDB X-ray Structure Validation Report ⓘ

Mar 10, 2026 – 08:26 AM UTC

PDB ID : 8Y4G / pdb_00008y4g
Title : Crystal structure of SARS-Cov-2 main protease G15S mutant in complex with Bofutrelvir
Authors : Zeng, P.; Wang, W.W.; Zhang, J.; Li, J.
Deposited on : 2024-01-30
Resolution : 1.93 Å(reported)

This is a Full wwPDB X-ray Structure Validation Report for a publicly released PDB entry.

We welcome your comments at validation@mail.wwpdb.org

A user guide is available at

<https://www.wwpdb.org/validation/2017/XrayValidationReportHelp>

with specific help available everywhere you see the ⓘ symbol.

The types of validation reports are described at

<http://www.wwpdb.org/validation/2017/FAQs#types>.

The following versions of software and data (see [references ⓘ](#)) were used in the production of this report:

MolProbity : 4-5-2 with Phenix2.0
Mogul : 2022.3.0, CSD as543be (2022)
Xtrriage (Phenix) : 2.0
EDS : 3.0
Buster-report : wwPDB partial adaption of 1.1.7 (2018)
Percentile statistics : 20250101.v01 (using entries in the PDB archive January 1st 2025)
CCP4 : 9.0.010 (Gargrove)
Density-Fitness : 1.0.12
Ideal geometry (proteins) : Engh & Huber (2001)
Ideal geometry (DNA, RNA) : Parkinson et al. (1996)
Validation Pipeline (wwPDB-VP) : 2.49

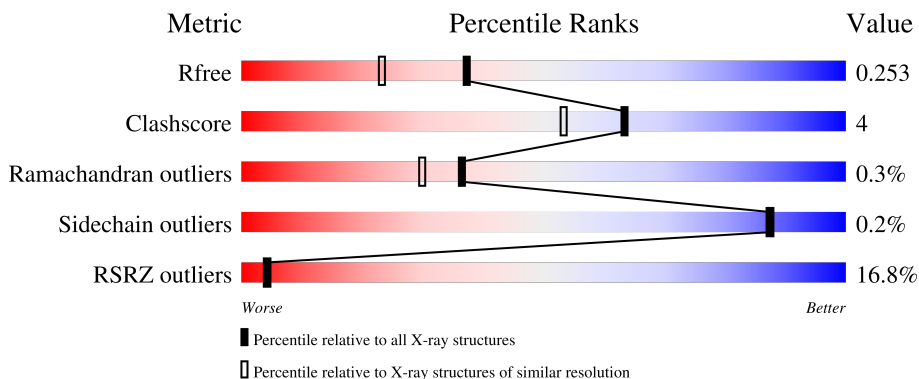
1 Overall quality at a glance

The following experimental techniques were used to determine the structure:

X-RAY DIFFRACTION

The reported resolution of this entry is 1.93 Å.

Percentile scores (ranging between 0-100) for global validation metrics of the entry are shown in the following graphic. The table shows the number of entries on which the scores are based.



Metric	Whole archive (#Entries)	Similar resolution (#Entries, resolution range(Å))
R_{free}	180053	1452 (1.94-1.94)
Clashscore	190562	1494 (1.94-1.94)
Ramachandran outliers	187476	1479 (1.94-1.94)
Sidechain outliers	187428	1479 (1.94-1.94)
RSRZ outliers	180081	1453 (1.94-1.94)

The table below summarises the geometric issues observed across the polymeric chains and their fit to the electron density. The red, orange, yellow and green segments of the lower bar indicate the fraction of residues that contain outliers for ≥ 3 , 2, 1 and 0 types of geometric quality criteria respectively. A grey segment represents the fraction of residues that are not modelled. The numeric value for each fraction is indicated below the corresponding segment, with a dot representing fractions $\leq 5\%$. The upper red bar (where present) indicates the fraction of residues that have poor fit to the electron density. The numeric value is given above the bar.

Mol	Chain	Length	Quality of chain
1	A	296	 5% 92% 7%
1	B	296	 28% 90% 10%

2 Entry composition

There are 3 unique types of molecules in this entry. The entry contains 4880 atoms, of which 0 are hydrogens and 0 are deuteriums.

In the tables below, the ZeroOcc column contains the number of atoms modelled with zero occupancy, the AltConf column contains the number of residues with at least one atom in alternate conformation and the Trace column contains the number of residues modelled with at most 2 atoms.

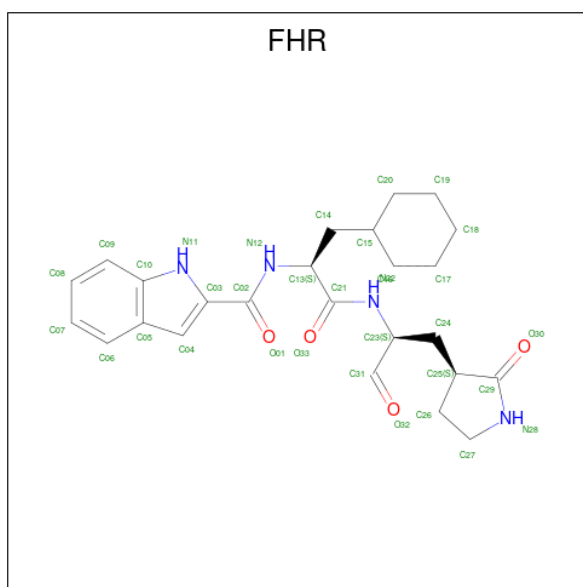
- Molecule 1 is a protein called 3C-like proteinase nsp5.

Mol	Chain	Residues	Atoms					ZeroOcc	AltConf	Trace
			Total	C	N	O	S			
1	A	294	2246	1427	377	421	21	0	0	0
1	B	296	2257	1433	379	424	21	0	0	0

There are 8 discrepancies between the modelled and reference sequences:

Chain	Residue	Modelled	Actual	Comment	Reference
A	15	SER	GLY	engineered mutation	UNP P0DTD1
A	46	ASN	SER	conflict	UNP P0DTD1
A	47	THR	GLU	conflict	UNP P0DTD1
A	142	ALA	ASN	conflict	UNP P0DTD1
B	15	SER	GLY	engineered mutation	UNP P0DTD1
B	46	ASN	SER	conflict	UNP P0DTD1
B	47	THR	GLU	conflict	UNP P0DTD1
B	142	ALA	ASN	conflict	UNP P0DTD1

- Molecule 2 is {N}-[(2 {S})-3-cyclohexyl-1-oxidanylidene-1-[(2 {S})-1-oxidanylidene-3-[(3 {S})-2-oxidanylidene-pyrrolidin-3-yl]propan-2-yl]amino]propan-2-yl]-1 {H}-indole-2-carboxamide (CCD ID: FHR) (formula: C₂₅H₃₂N₄O₄) (labeled as "Ligand of Interest" by depositor).



Mol	Chain	Residues	Atoms				ZeroOcc	AltConf
2	A	1	Total	C	N	O	0	0
			33	25	4	4		
2	B	1	Total	C	N	O	0	0
			33	25	4	4		

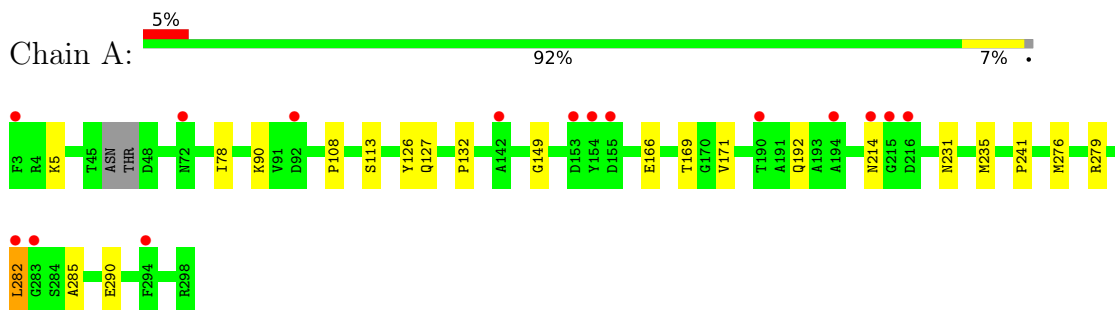
- Molecule 3 is water.

Mol	Chain	Residues	Atoms		ZeroOcc	AltConf
3	A	189	Total	O	0	0
			189	189		
3	B	122	Total	O	0	0
			122	122		

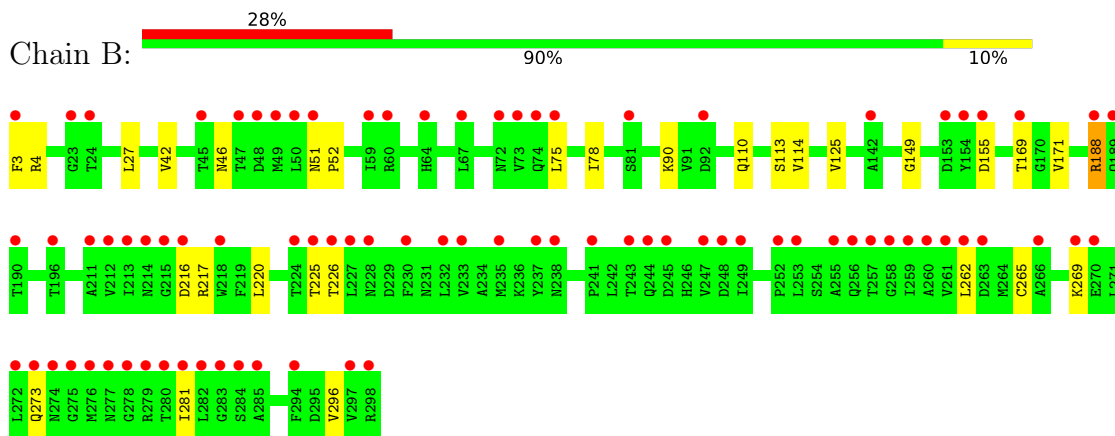
3 Residue-property plots [i](#)

These plots are drawn for all protein, RNA, DNA and oligosaccharide chains in the entry. The first graphic for a chain summarises the proportions of the various outlier classes displayed in the second graphic. The second graphic shows the sequence view annotated by issues in geometry and electron density. Residues are color-coded according to the number of geometric quality criteria for which they contain at least one outlier: green = 0, yellow = 1, orange = 2 and red = 3 or more. A red dot above a residue indicates a poor fit to the electron density ($RSRZ > 2$). Stretches of 2 or more consecutive residues without any outlier are shown as a green connector. Residues present in the sample, but not in the model, are shown in grey.

- Molecule 1: 3C-like proteinase nsp5



- Molecule 1: 3C-like proteinase nsp5



4 Data and refinement statistics i

Property	Value	Source
Space group	P 21 21 21	Depositor
Cell constants a, b, c, α , β , γ	68.10Å 101.50Å 104.70Å 90.00° 90.00° 90.00°	Depositor
Resolution (Å)	50.75 – 1.93 50.75 – 1.93	Depositor EDS
% Data completeness (in resolution range)	98.3 (50.75-1.93) 98.3 (50.75-1.93)	Depositor EDS
R_{merge}	0.15	Depositor
R_{sym}	(Not available)	Depositor
$\langle I/\sigma(I) \rangle$ ¹	1.49 (at 1.94Å)	Xtrriage
Refinement program	PHENIX 1.12_2829, PHENIX 1.12_2829	Depositor
R, R_{free}	0.216 , 0.250 0.224 , 0.253	Depositor DCC
R_{free} test set	2009 reflections (3.65%)	wwPDB-VP
Wilson B-factor (Å ²)	24.8	Xtrriage
Anisotropy	0.520	Xtrriage
Bulk solvent k_{sol} (e/Å ³), B_{sol} (Å ²)	0.38 , 42.4	EDS
L-test for twinning ²	$\langle L \rangle = 0.50$, $\langle L^2 \rangle = 0.33$	Xtrriage
Estimated twinning fraction	0.011 for -h,l,k	Xtrriage
F_o, F_c correlation	0.94	EDS
Total number of atoms	4880	wwPDB-VP
Average B, all atoms (Å ²)	30.0	wwPDB-VP

Xtrriage's analysis on translational NCS is as follows: *The largest off-origin peak in the Patterson function is 3.79% of the height of the origin peak. No significant pseudotranslation is detected.*

¹Intensities estimated from amplitudes.

²Theoretical values of $\langle |L| \rangle$, $\langle L^2 \rangle$ for acentric reflections are 0.5, 0.333 respectively for untwinned datasets, and 0.375, 0.2 for perfectly twinned datasets.

5 Model quality [i](#)

5.1 Standard geometry [i](#)

Bond lengths and bond angles in the following residue types are not validated in this section: FHR

The Z score for a bond length (or angle) is the number of standard deviations the observed value is removed from the expected value. A bond length (or angle) with $|Z| > 5$ is considered an outlier worth inspection. RMSZ is the root-mean-square of all Z scores of the bond lengths (or angles).

Mol	Chain	Bond lengths		Bond angles	
		RMSZ	# Z >5	RMSZ	# Z >5
1	A	0.36	0/2296	0.58	0/3126
1	B	0.35	0/2308	0.55	1/3145 (0.0%)
All	All	0.36	0/4604	0.57	1/6271 (0.0%)

There are no bond length outliers.

All (1) bond angle outliers are listed below:

Mol	Chain	Res	Type	Atoms	Z	Observed(°)	Ideal(°)
1	B	188	ARG	NE-CZ-NH2	5.11	123.80	119.20

There are no chirality outliers.

There are no planarity outliers.

5.2 Too-close contacts [i](#)

In the following table, the Non-H and H(model) columns list the number of non-hydrogen atoms and hydrogen atoms in the chain respectively. The H(added) column lists the number of hydrogen atoms added and optimized by MolProbity. The Clashes column lists the number of clashes within the asymmetric unit, whereas Symm-Clashes lists symmetry-related clashes.

Mol	Chain	Non-H	H(model)	H(added)	Clashes	Symm-Clashes
1	A	2246	0	2169	14	0
1	B	2257	0	2177	23	0
2	A	33	0	0	0	0
2	B	33	0	0	0	0
3	A	189	0	0	3	0
3	B	122	0	0	8	0
All	All	4880	0	4346	36	0

The all-atom clashscore is defined as the number of clashes found per 1000 atoms (including hydrogen atoms). The all-atom clashscore for this structure is 4.

All (36) close contacts within the same asymmetric unit are listed below, sorted by their clash magnitude.

Atom-1	Atom-2	Interatomic distance (Å)	Clash overlap (Å)
1:B:52:PRO:HD2	1:B:188:ARG:HG2	1.78	0.66
1:B:155:ASP:OD1	3:B:402:HOH:O	2.14	0.65
1:B:225:THR:HG22	1:B:226:THR:H	1.61	0.65
1:A:235:MET:HE2	1:A:241:PRO:HB3	1.79	0.64
1:A:169:THR:HG23	1:A:171:VAL:HG22	1.80	0.63
1:B:188:ARG:NH2	3:B:401:HOH:O	1.99	0.61
1:A:276:MET:HE1	1:A:285:ALA:HA	1.83	0.60
1:A:166:GLU:OE2	3:A:401:HOH:O	2.16	0.59
1:B:269:LYS:NZ	1:B:273:GLN:OE1	2.35	0.59
1:B:78:ILE:HD11	1:B:90:LYS:HE2	1.85	0.58
1:B:225:THR:HG22	1:B:226:THR:N	2.19	0.58
1:A:276:MET:HE3	1:A:279:ARG:O	2.04	0.57
1:B:51:ASN:ND2	3:B:407:HOH:O	2.39	0.56
1:A:231:ASN:HB3	1:A:235:MET:HE3	1.87	0.56
1:A:5:LYS:HD3	3:A:403:HOH:O	2.08	0.53
1:B:3:PHE:HZ	1:B:296:VAL:HA	1.75	0.51
1:A:78:ILE:HG13	1:A:90:LYS:HD3	1.93	0.51
1:B:169:THR:HG23	1:B:171:VAL:HG22	1.92	0.50
1:B:217:ARG:HB3	1:B:220:LEU:HD12	1.95	0.49
1:B:51:ASN:HA	3:B:407:HOH:O	2.13	0.48
1:A:5:LYS:HG2	1:A:127:GLN:HB3	1.97	0.47
1:A:108:PRO:HB3	1:A:132:PRO:HA	1.98	0.46
1:B:217:ARG:HD2	3:B:444:HOH:O	2.15	0.45
1:B:46:ASN:ND2	3:B:413:HOH:O	2.49	0.45
1:B:75:LEU:O	3:B:403:HOH:O	2.21	0.45
1:A:126:TYR:CD1	1:B:4:ARG:HD2	2.52	0.44
1:B:216:ASP:OD2	1:B:281:ILE:O	2.36	0.44
1:A:282:LEU:HD23	1:A:282:LEU:HA	1.91	0.43
1:B:52:PRO:HD2	1:B:188:ARG:CG	2.48	0.43
1:B:113:SER:O	1:B:149:GLY:HA2	2.19	0.43
1:A:290:GLU:OE1	3:A:403:HOH:O	2.21	0.43
1:A:113:SER:O	1:A:149:GLY:HA2	2.19	0.43
1:B:114:VAL:O	1:B:125:VAL:HA	2.19	0.42
1:B:262:LEU:HA	1:B:265:CYS:HB2	2.02	0.42
1:B:110:GLN:NE2	3:B:415:HOH:O	2.50	0.42
1:B:27:LEU:HD21	1:B:42:VAL:HB	2.01	0.41

There are no symmetry-related clashes.

5.3 Torsion angles [i](#)

5.3.1 Protein backbone [i](#)

In the following table, the Percentiles column shows the percent Ramachandran outliers of the chain as a percentile score with respect to all X-ray entries followed by that with respect to entries of similar resolution.

The Analysed column shows the number of residues for which the backbone conformation was analysed, and the total number of residues.

Mol	Chain	Analysed	Favoured	Allowed	Outliers	Percentiles	
1	A	290/296 (98%)	283 (98%)	5 (2%)	2 (1%)	18	9
1	B	294/296 (99%)	285 (97%)	9 (3%)	0	100	100
All	All	584/592 (99%)	568 (97%)	14 (2%)	2 (0%)	36	30

All (2) Ramachandran outliers are listed below:

Mol	Chain	Res	Type
1	A	214	ASN
1	A	282	LEU

5.3.2 Protein sidechains [i](#)

In the following table, the Percentiles column shows the percent sidechain outliers of the chain as a percentile score with respect to all X-ray entries followed by that with respect to entries of similar resolution.

The Analysed column shows the number of residues for which the sidechain conformation was analysed, and the total number of residues.

Mol	Chain	Analysed	Rotameric	Outliers	Percentiles	
1	A	245/255 (96%)	244 (100%)	1 (0%)	84	84
1	B	246/255 (96%)	246 (100%)	0	100	100
All	All	491/510 (96%)	490 (100%)	1 (0%)	87	87

All (1) residues with a non-rotameric sidechain are listed below:

Mol	Chain	Res	Type
1	A	192	GLN

Sometimes sidechains can be flipped to improve hydrogen bonding and reduce clashes. All (8) such sidechains are listed below:

Mol	Chain	Res	Type
1	A	107	GLN
1	A	119	ASN
1	A	180	ASN
1	A	244	GLN
1	A	277	ASN
1	B	51	ASN
1	B	64	HIS
1	B	119	ASN

5.3.3 RNA [i](#)

There are no RNA molecules in this entry.

5.4 Non-standard residues in protein, DNA, RNA chains [i](#)

There are no non-standard protein/DNA/RNA residues in this entry.

5.5 Carbohydrates [i](#)

There are no oligosaccharides in this entry.

5.6 Ligand geometry [i](#)

2 ligands are modelled in this entry.

In the following table, the Counts columns list the number of bonds (or angles) for which Mogul statistics could be retrieved, the number of bonds (or angles) that are observed in the model and the number of bonds (or angles) that are defined in the Chemical Component Dictionary. The Link column lists molecule types, if any, to which the group is linked. The Z score for a bond length (or angle) is the number of standard deviations the observed value is removed from the expected value. A bond length (or angle) with $|Z| > 2$ is considered an outlier worth inspection. RMSZ is the root-mean-square of all Z scores of the bond lengths (or angles).

Mol	Type	Chain	Res	Link	Bond lengths			Bond angles		
					Counts	RMSZ	$\# Z > 2$	Counts	RMSZ	$\# Z > 2$
2	FHR	A	301	1	35,36,36	6.18	17 (48%)	44,49,49	1.47	10 (22%)
2	FHR	B	301	1	35,36,36	6.32	16 (45%)	44,49,49	1.37	6 (13%)

In the following table, the Chirals column lists the number of chiral outliers, the number of chiral centers analysed, the number of these observed in the model and the number defined in the Chemical Component Dictionary. Similar counts are reported in the Torsion and Rings columns.

'-' means no outliers of that kind were identified.

Mol	Type	Chain	Res	Link	Chirals	Torsions	Rings
2	FHR	A	301	1	-	3/25/44/44	0/4/4/4
2	FHR	B	301	1	-	0/25/44/44	0/4/4/4

All (33) bond length outliers are listed below:

Mol	Chain	Res	Type	Atoms	Z	Observed(Å)	Ideal(Å)
2	B	301	FHR	C29-N28	25.48	1.60	1.33
2	A	301	FHR	C29-N28	24.84	1.60	1.33
2	B	301	FHR	C26-C27	12.02	1.70	1.53
2	A	301	FHR	C26-C27	11.71	1.70	1.53
2	B	301	FHR	C09-C10	11.26	1.57	1.39
2	A	301	FHR	C09-C10	11.06	1.57	1.39
2	B	301	FHR	C06-C05	10.27	1.58	1.41
2	A	301	FHR	C06-C05	9.89	1.58	1.41
2	B	301	FHR	C26-C25	-8.57	1.30	1.54
2	A	301	FHR	C26-C25	-8.48	1.30	1.54
2	B	301	FHR	C08-C09	7.56	1.51	1.38
2	B	301	FHR	C07-C06	7.30	1.51	1.38
2	A	301	FHR	C08-C09	7.18	1.51	1.38
2	A	301	FHR	C07-C06	6.97	1.50	1.38
2	B	301	FHR	C27-N28	-6.86	1.31	1.46
2	A	301	FHR	C27-N28	-6.83	1.31	1.46
2	B	301	FHR	C02-N12	6.09	1.46	1.34
2	A	301	FHR	C21-N22	5.65	1.46	1.34
2	A	301	FHR	C02-N12	5.46	1.45	1.34
2	B	301	FHR	C21-N22	5.12	1.45	1.34
2	B	301	FHR	C08-C07	4.69	1.48	1.38
2	A	301	FHR	C08-C07	4.56	1.48	1.38
2	A	301	FHR	O33-C21	-3.43	1.16	1.23
2	B	301	FHR	O33-C21	-3.41	1.16	1.23
2	A	301	FHR	C24-C25	3.29	1.61	1.53
2	B	301	FHR	C24-C25	3.23	1.60	1.53
2	A	301	FHR	C25-C29	2.80	1.59	1.52
2	B	301	FHR	C25-C29	2.79	1.59	1.52
2	B	301	FHR	C03-C02	2.79	1.54	1.48
2	A	301	FHR	C03-C02	2.73	1.54	1.48
2	B	301	FHR	O30-C29	-2.29	1.19	1.23
2	A	301	FHR	O01-C02	-2.26	1.19	1.23
2	A	301	FHR	O30-C29	-2.07	1.19	1.23

All (16) bond angle outliers are listed below:

Mol	Chain	Res	Type	Atoms	Z	Observed(°)	Ideal(°)
2	A	301	FHR	C27-N28-C29	-3.66	106.03	113.79
2	B	301	FHR	C27-N28-C29	-3.55	106.25	113.79
2	A	301	FHR	C24-C25-C29	-3.13	106.03	112.81
2	B	301	FHR	O32-C31-C23	-3.03	116.97	124.77
2	B	301	FHR	C13-N12-C02	-2.92	117.09	122.00
2	A	301	FHR	C26-C25-C29	2.65	106.51	102.87
2	A	301	FHR	O32-C31-C23	-2.56	118.19	124.77
2	B	301	FHR	C15-C14-C13	-2.43	111.24	114.52
2	A	301	FHR	C18-C17-C16	2.41	116.38	111.42
2	A	301	FHR	C14-C15-C16	-2.22	106.55	111.71
2	A	301	FHR	O30-C29-N28	2.20	128.84	125.76
2	A	301	FHR	C18-C19-C20	2.20	115.94	111.42
2	B	301	FHR	C24-C25-C29	-2.17	108.12	112.81
2	A	301	FHR	C16-C15-C20	2.13	114.49	109.29
2	B	301	FHR	O33-C21-N22	-2.09	119.22	122.96
2	A	301	FHR	C24-C23-C31	-2.09	107.78	110.99

There are no chirality outliers.

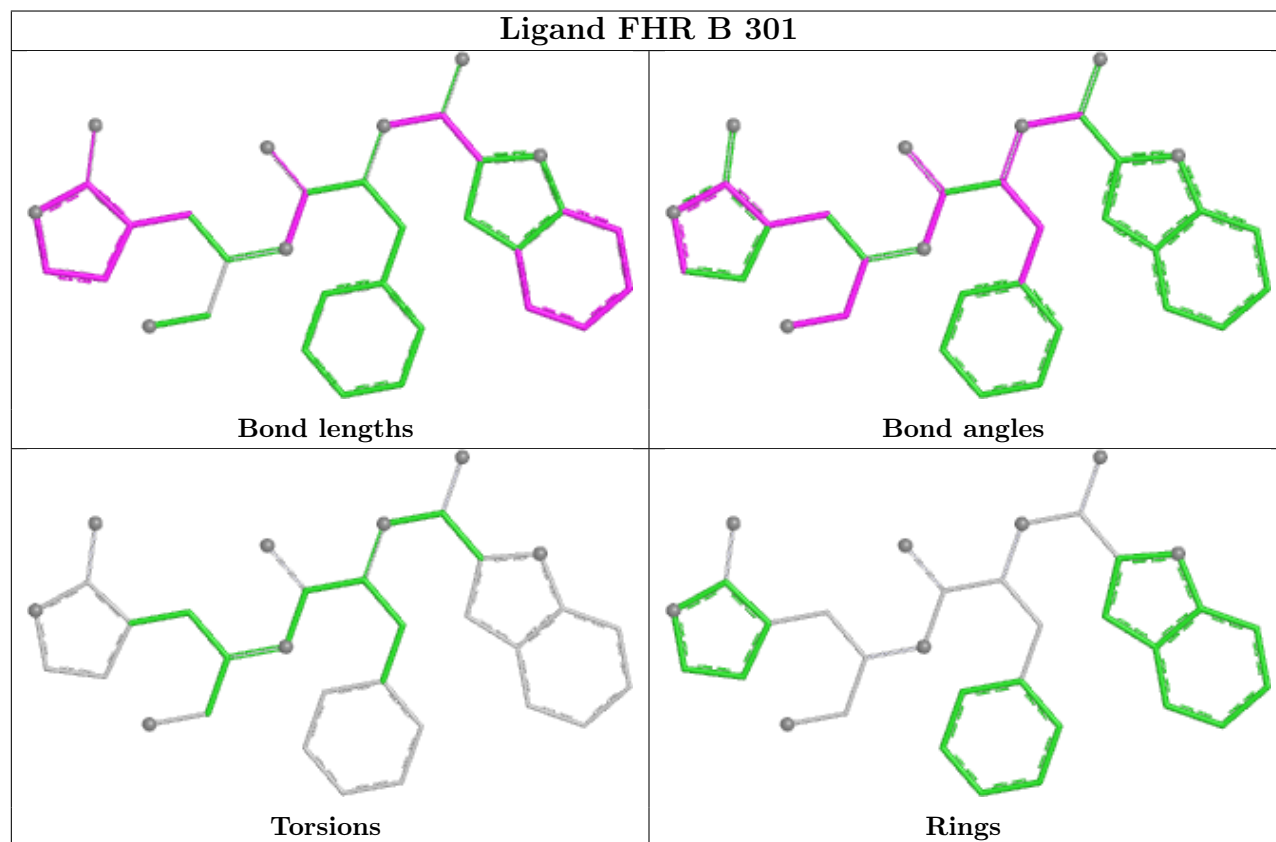
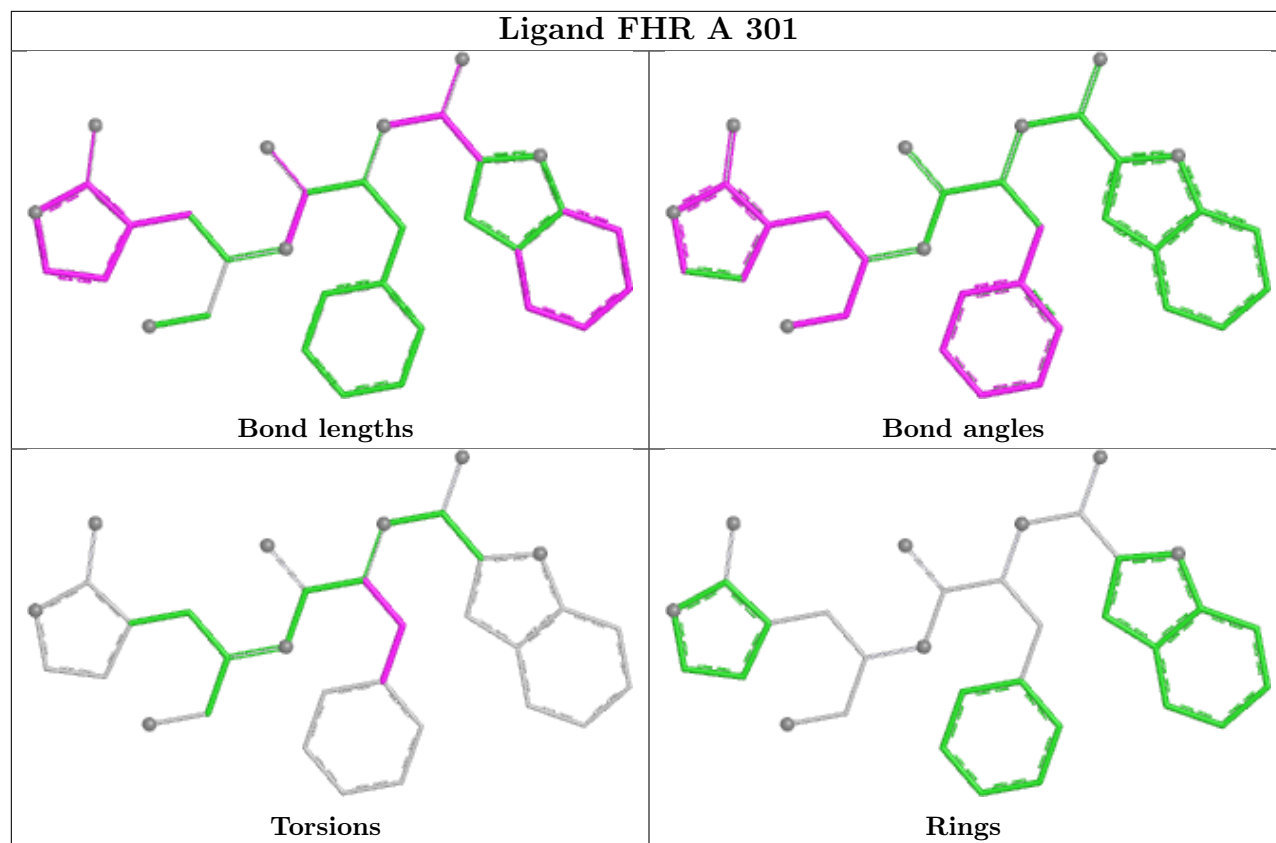
All (3) torsion outliers are listed below:

Mol	Chain	Res	Type	Atoms
2	A	301	FHR	C13-C14-C15-C20
2	A	301	FHR	N12-C13-C14-C15
2	A	301	FHR	C21-C13-C14-C15

There are no ring outliers.

No monomer is involved in short contacts.

The following is a two-dimensional graphical depiction of Mogul quality analysis of bond lengths, bond angles, torsion angles, and ring geometry for all instances of the Ligand of Interest. In addition, ligands with molecular weight > 250 and outliers as shown on the validation Tables will also be included. For torsion angles, if less than 5% of the Mogul distribution of torsion angles is within 10 degrees of the torsion angle in question, then that torsion angle is considered an outlier. Any bond that is central to one or more torsion angles identified as an outlier by Mogul will be highlighted in the graph. For rings, the root-mean-square deviation (RMSD) between the ring in question and similar rings identified by Mogul is calculated over all ring torsion angles. If the average RMSD is greater than 60 degrees and the minimal RMSD between the ring in question and any Mogul-identified rings is also greater than 60 degrees, then that ring is considered an outlier. The outliers are highlighted in purple. The color gray indicates Mogul did not find sufficient equivalents in the CSD to analyse the geometry.



5.7 Other polymers [i](#)

There are no such residues in this entry.

5.8 Polymer linkage issues [i](#)

There are no chain breaks in this entry.

6 Fit of model and data

6.1 Protein, DNA and RNA chains

In the following table, the column labelled ‘#RSRZ > 2’ contains the number (and percentage) of RSRZ outliers, followed by percent RSRZ outliers for the chain as percentile scores relative to all X-ray entries and entries of similar resolution. The OWAB column contains the minimum, median, 95th percentile and maximum values of the occupancy-weighted average B-factor per residue. The column labelled ‘Q < 0.9’ lists the number of (and percentage) of residues with an average occupancy less than 0.9.

Mol	Chain	Analysed	<RSRZ>	#RSRZ>2	OWAB(Å ²)	Q<0.9
1	A	294/296 (99%)	0.36	15 (5%) 33 38	15, 25, 39, 50	0
1	B	296/296 (100%)	1.22	84 (28%) 1 1	18, 33, 58, 65	0
All	All	590/592 (99%)	0.79	99 (16%) 4 4	15, 28, 53, 65	0

All (99) RSRZ outliers are listed below:

Mol	Chain	Res	Type	RSRZ
1	B	281	ILE	7.4
1	B	282	LEU	6.7
1	B	50	LEU	5.5
1	B	255	ALA	4.8
1	B	225	THR	4.6
1	B	155	ASP	4.5
1	B	216	ASP	4.4
1	B	212	VAL	4.4
1	B	294	PHE	4.4
1	B	24	THR	4.3
1	B	283	GLY	4.3
1	B	274	ASN	4.3
1	B	3	PHE	4.2
1	A	215	GLY	4.2
1	B	213	ILE	4.1
1	B	232	LEU	4.1
1	B	154	TYR	4.0
1	B	227	LEU	4.0
1	B	280	THR	3.9
1	B	247	VAL	3.9
1	B	226	THR	3.8
1	B	59	ILE	3.7
1	B	72	ASN	3.7
1	B	257	THR	3.5

Continued on next page...

Continued from previous page...

Mol	Chain	Res	Type	RSRZ
1	B	275	GLY	3.5
1	B	298	ARG	3.4
1	A	153	ASP	3.4
1	B	215	GLY	3.4
1	B	230	PHE	3.3
1	B	153	ASP	3.3
1	A	282	LEU	3.3
1	A	194	ALA	3.3
1	B	233	VAL	3.3
1	B	249	ILE	3.2
1	B	211	ALA	3.2
1	A	190	THR	3.2
1	B	259	ILE	3.2
1	B	224	THR	3.2
1	B	252	PRO	3.2
1	B	51	ASN	3.2
1	B	237	TYR	3.2
1	B	297	VAL	3.2
1	B	188	ARG	3.2
1	B	273	GLN	3.1
1	B	214	ASN	3.1
1	B	272	LEU	3.1
1	B	169	THR	3.1
1	B	243	THR	3.1
1	B	262	LEU	3.0
1	B	235	MET	3.0
1	B	261	VAL	3.0
1	B	244	GLN	2.9
1	A	294	PHE	2.9
1	A	154	TYR	2.9
1	B	270	GLU	2.8
1	B	64	HIS	2.8
1	B	245	ASP	2.7
1	B	284	SER	2.7
1	B	277	ASN	2.7
1	B	278	GLY	2.7
1	B	260	ALA	2.6
1	B	285	ALA	2.6
1	B	92	ASP	2.6
1	A	72	ASN	2.6
1	B	266	ALA	2.6
1	B	269	LYS	2.6

Continued on next page...

Continued from previous page...

Mol	Chain	Res	Type	RSRZ
1	B	47	THR	2.6
1	B	276	MET	2.5
1	B	48	ASP	2.5
1	B	253	LEU	2.5
1	B	23	GLY	2.5
1	B	279	ARG	2.5
1	B	263	ASP	2.5
1	B	142	ALA	2.5
1	A	214	ASN	2.4
1	A	92	ASP	2.4
1	B	218	TRP	2.4
1	B	49	MET	2.4
1	B	67	LEU	2.4
1	A	3	PHE	2.4
1	A	155	ASP	2.4
1	B	60	ARG	2.4
1	B	190	THR	2.3
1	B	189	GLN	2.3
1	B	258	GLY	2.3
1	B	248	ASP	2.3
1	B	256	GLN	2.3
1	B	228	ASN	2.2
1	A	142	ALA	2.2
1	B	73	VAL	2.2
1	B	241	PRO	2.2
1	B	238	ASN	2.1
1	B	74	GLN	2.1
1	B	45	THR	2.1
1	A	283	GLY	2.1
1	A	216	ASP	2.1
1	B	196	THR	2.1
1	B	75	LEU	2.1
1	B	81	SER	2.0

6.2 Non-standard residues in protein, DNA, RNA chains [i](#)

There are no non-standard protein/DNA/RNA residues in this entry.

6.3 Carbohydrates [i](#)

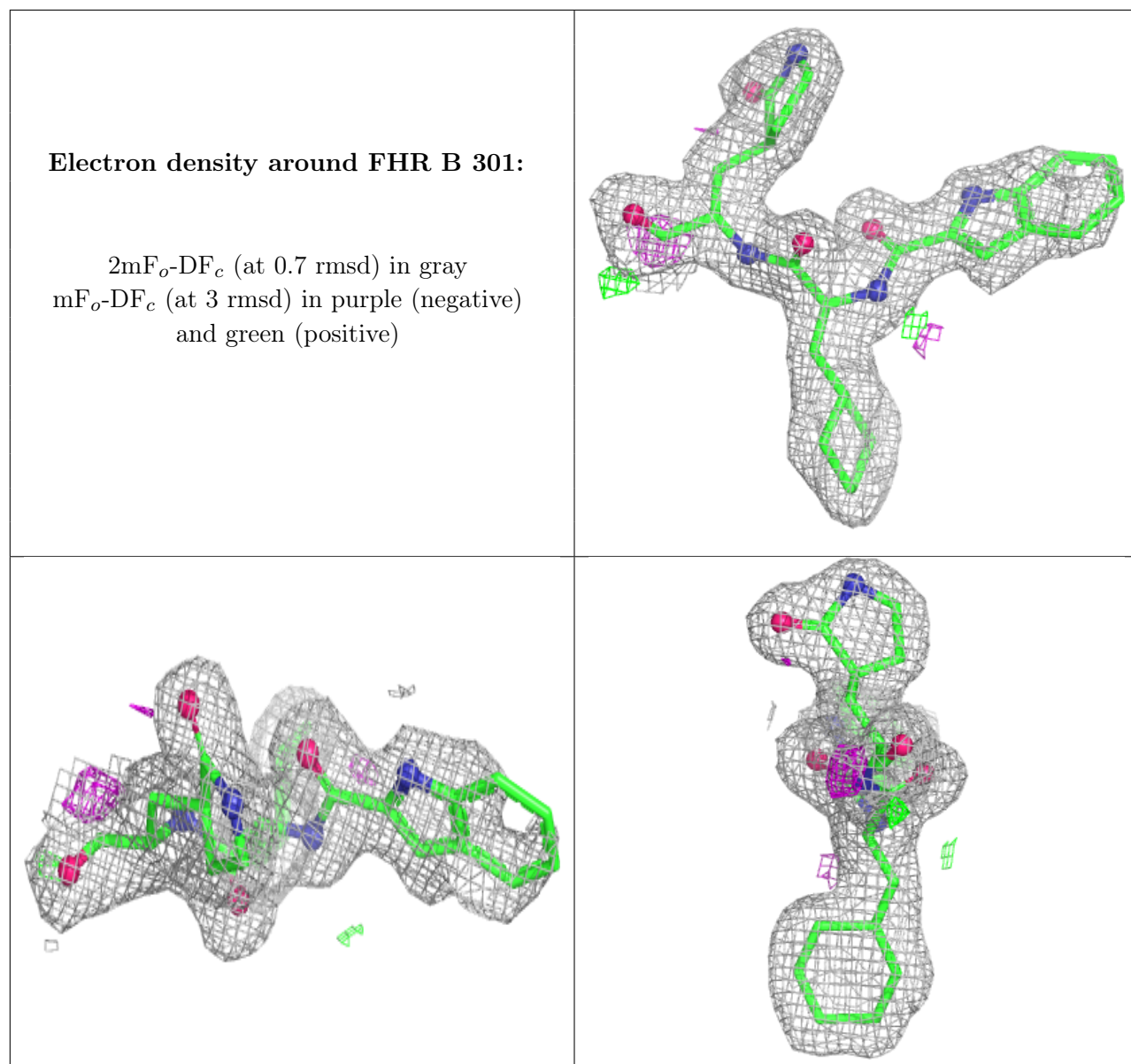
There are no oligosaccharides in this entry.

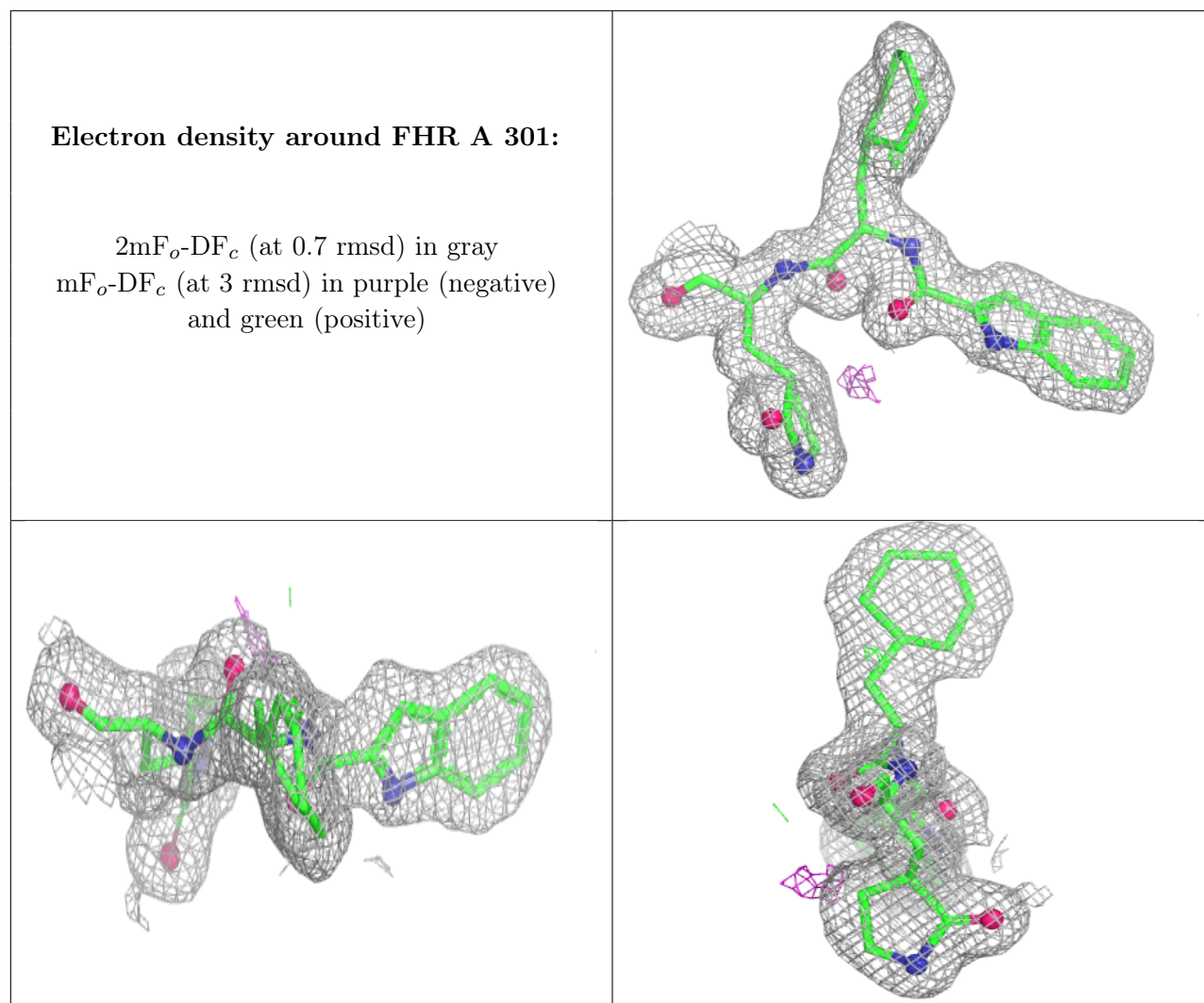
6.4 Ligands

In the following table, the Atoms column lists the number of modelled atoms in the group and the number defined in the chemical component dictionary. The B-factors column lists the minimum, median, 95th percentile and maximum values of B factors of atoms in the group. The column labelled 'Q< 0.9' lists the number of atoms with occupancy less than 0.9.

Mol	Type	Chain	Res	Atoms	RSCC	RSR	B-factors(Å ²)	Q<0.9
2	FHR	B	301	33/33	0.93	0.10	22,26,42,43	0
2	FHR	A	301	33/33	0.95	0.08	17,23,31,34	0

The following is a graphical depiction of the model fit to experimental electron density of all instances of the Ligand of Interest. In addition, ligands with molecular weight > 250 and outliers as shown on the geometry validation Tables will also be included. Each fit is shown from different orientation to approximate a three-dimensional view.





6.5 Other polymers [i](#)

There are no such residues in this entry.