

Integrative Structure Validation Report

October 09, 2025 - 04:38 PM PDT

The following software was used in the production of this report:

IHMValidation Version 3.0

Python-IHM Version 2.5

MolProbity Version 4.5.2

EMDB validation analysis Version 0.0.1.dev127

ChimeraX Version 1.9


Chimera Version 1.19

MapQ Version 1.8.1

PDB ID	9A0G pdb_00009a0g
PDB-Dev ID	PDBDEV_00000052
Structure Title	Integrative model of Nup116 knockout (at 25C) yeast nuclear pore complex
Structure Authors	Vasileios Rantos; Matteo Allegretti; Christian E. Zimmerli; Florian Wilfling; Paolo Ronchi; Herman K.H. Fung; Chia-Wei Lee; Wim Hagen; Beata Turonova; Kai Karius; Mandy Boermel; Xiaojie Zhang; Christoph Mueller; Yannick Schwab; Julia Mahamid; Boris Pfander; Martin Beck; Jan Kosinski
Deposited on	2020-06-04

This is a PDB-IHM Structure Validation Report.

We welcome your comments at helpdesk@pdb-ihm.org

A user guide is available at https://pdb-ihm.org/validation_help.html with specific help available everywhere you see the  symbol.

List of references used to build this report is available [here](#).

1. Overview

1.1. Summary

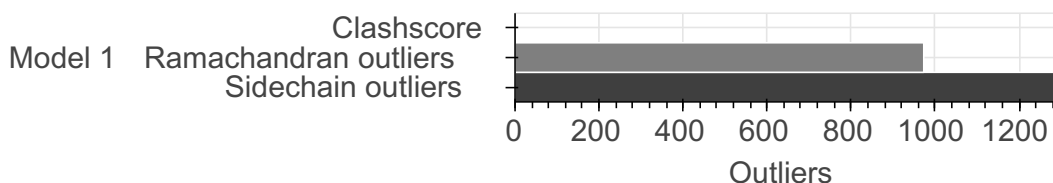
This entry consists of 1 model(s). A total of 6 dataset(s) were used to build this entry.

Name	Type	Count
3DEM volume	Experimental data	2
Other	Experimental data	1
Integrative model	Starting model	3

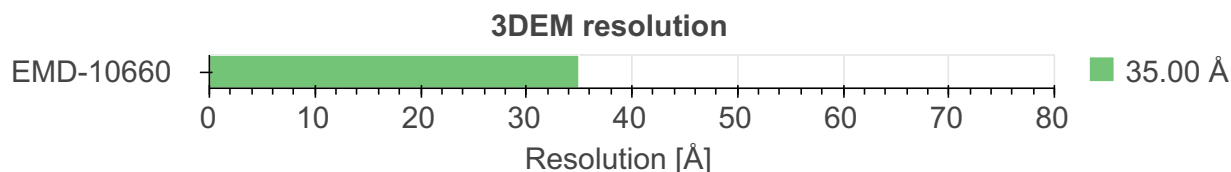
1.2. Overall quality [?](#)

This validation report contains model quality assessments for all structures, data quality and fit to model assessments for SAS and crosslinking-MS datasets. Data quality and fit to model assessments for other datasets and model uncertainty are under development. Number of plots is limited to 256.

Model Quality: MolProbity Analysis [?](#)



Data Quality [?](#)



2. Model Details [?](#)

2.1. Ensemble information [?](#)

This entry consists of 0 distinct ensemble(s).

2.2. Representation [?](#)

This entry has 1 representation(s).

ID	Model(s)	Entity ID	Molecule name	Chain(s) [auth]	Total residues	Rigid segments	Flexible segments	Model coverage/ Starting model coverage (%)	Scale
1	1	8	Nic96	A1	839	-	1-839	100.00 / 100.00	Atomic
				A2					
				A3					
				A4					
		9	Nup188	B1	1655	-	1-1655	100.00 / 100.00	
				B2					

ID	Model(s)	Entity ID	Molecule name	Chain(s) [auth]	Total residues	Rigid segments	Flexible segments	Model coverage/ Starting model coverage (%)	Scale
		14	Nup192	C1	1683	-	1-1683	100.00 / 100.00	Atomic
				C2					
		10	Nup157	D1	1391	-	1-1391	100.00 / 100.00	Atomic
				D2					
		11	Nup57	H1	541	-	1-541	100.00 / 100.00	Atomic
				H2					
				H3					
				H4					
		12	Nup49	I1	472	-	1-472	100.00 / 100.00	Atomic
				I2					
				I3					
				I4					
		13	Nsp1	J1	823	-	1-823	100.00 / 100.00	Atomic
				J2					
				J3					
				J4					
		1	Nup133	K1	1157	-	1-1157	100.00 / 100.00	Atomic
				K2					
		2	Nup84	L1	726	-	1-726	100.00 / 100.00	Atomic
				L2					
3	Nup145c	M1	712	-	1-712	100.00 / 100.00	Atomic		
		M2							
4	Sec13	N1	297	-	1-297	100.00 / 100.00	Atomic		
		N2							
5	Seh1	O1	349	-	1-349	100.00 / 100.00	Atomic		
		O2							
6	Nup85	P1	744	-	1-744	100.00 / 100.00	Atomic		
		P2							
7	Nup120	R1	1037	-	1-1037	100.00 / 100.00	Atomic		
		R2							
15	Nup170	d1	1502	-	1-1502	100.00 / 100.00	Atomic		
		d2							

2.3. Datasets used for modeling

There are 6 unique datasets used to build the models in this entry.

ID	Dataset type	Database name	Data access code
1	3DEM volume	EMDB	EMD-10660
2	3DEM volume	Zenodo	10.5281/zenodo.3820319
3	Integrative model	PDB	pdb_00009a0f
4	Integrative model	PDB	pdb_00009a0f
5	Integrative model	PDB	pdb_00009a0f
6	Other	Not available	https://doi.org/10.1038/nsmb1194

2.4. Methodology and software ?

This entry is a result of 1 distinct protocol(s).

Step number	Protocol ID	Method name	Method type	Method description	Number of computed models	Multi state modeling	Multi scale modeling
1	1	Monte Carlo simulated annealing optimization of multiple rigid bodies with IMP	Monte Carlo simulated annealing optimization for CR Y-complex, NR Y-complex and IR asymmetric unit	Not available	Not available	False	False

There is 1 software package reported in this entry.

ID	Software name	Software version	Software classification	Software location
1	Integrative Modeling Platform (IMP)	2.9.0	integrative model building	https://integrativemodeling.org

3. Data quality ?

3.3. 3DEM ?

This section describes quality of the 3DEM datasets

[EMD-10660](#)

3.3.1. Experimental information ?

EM reconstruction method:	SUBTOMOGRAM AVERAGING
Resolution:	35.00 Å
Recommended level:	0.110
Estimated volume:	145460.33 nm ³
Specimen preparation:	Preparation ID 1 Vitrification

Map-only validation report:

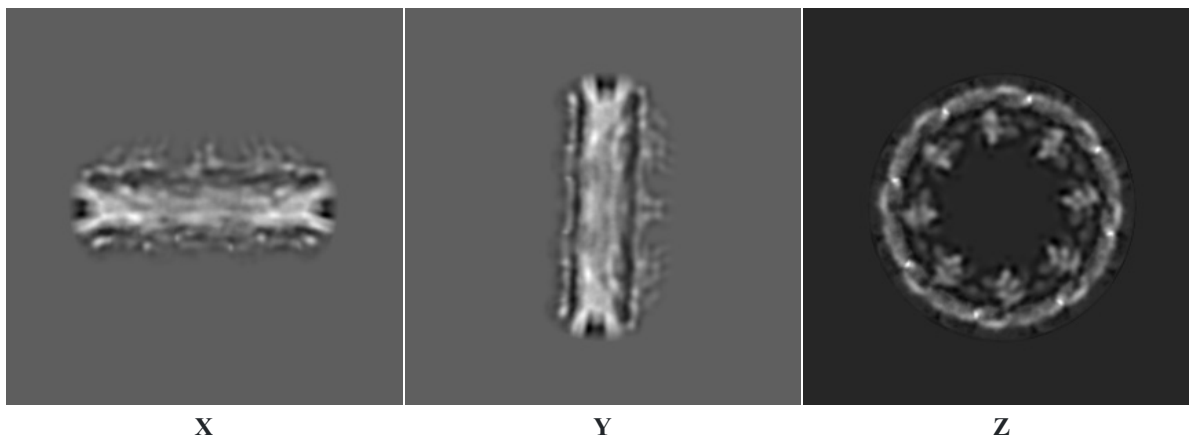
[wwPDB validation report](#)

[3.3.2. Map visualisation](#) ?

This section contains visualisations of the EMDB entry EMD-10660. These allow visual inspection of the internal detail of the map and identification of artifacts. Images derived from a raw map, generated by summing the deposited half-maps, are presented below the corresponding image components of the primary map to allow further visual inspection and comparison with those of the primary map.

[3.3.2.1. Orthogonal projections](#) ?

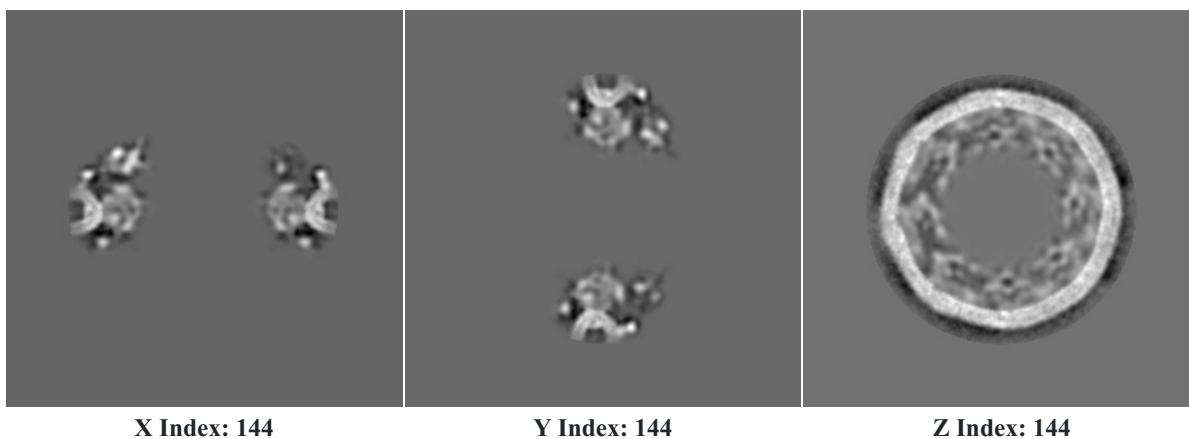
[Primary map](#)



The images above show the map projected in three orthogonal directions.

[3.3.2.2. Central slices](#) ?

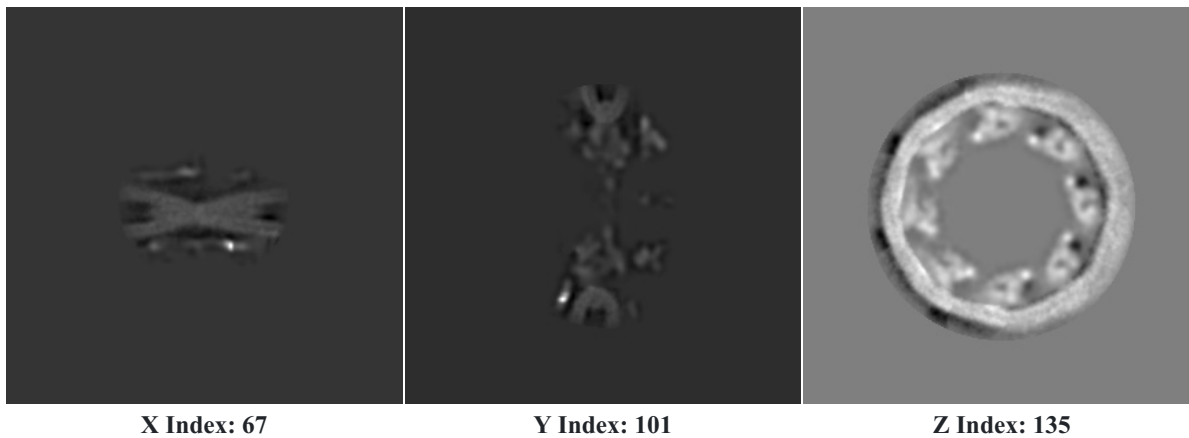
[Primary map](#)



The images above show central slices of the map in three orthogonal directions.

[3.3.2.3. Largest variance slices](#) ?

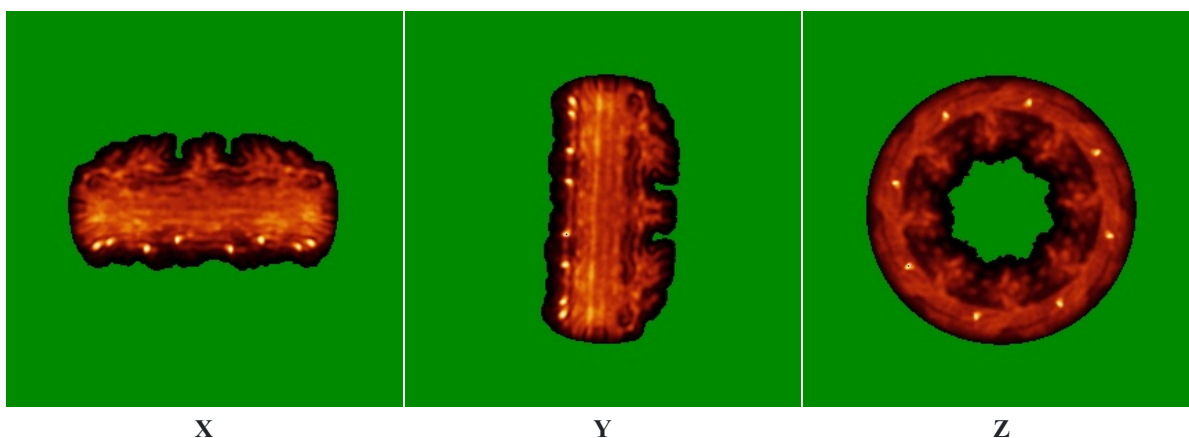
[Primary map](#)



The images above show the largest variance slices of the map in three orthogonal directions.

3.3.2.4 Orthogonal standard-deviation projections (false-color) ?

Primary map



The images above show the map standard deviation projections with false color in three orthogonal directions. Minimum values are shown in green, max in blue, and dark to light orange shades represent small to large values respectively.

3.3.2.5. Orthogonal surface views ?

Primary map

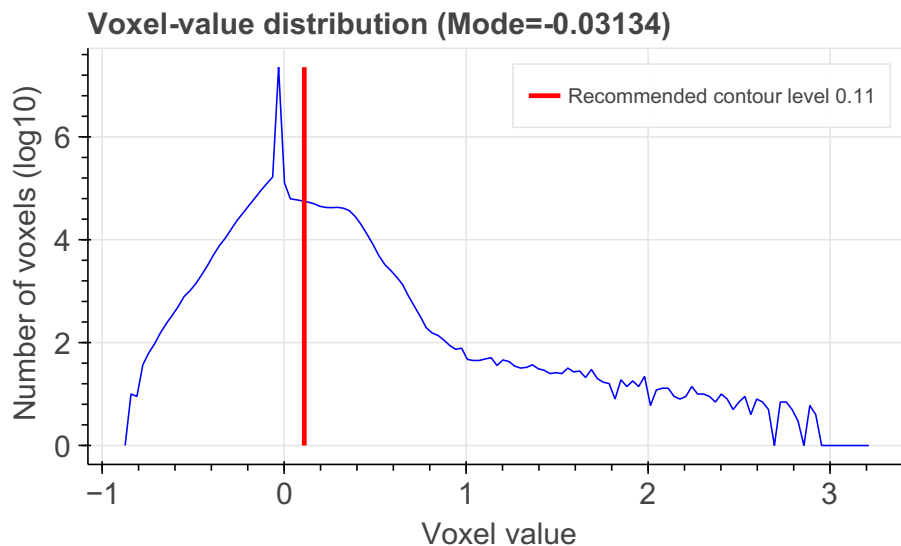


The images above show the 3D surface view of the map at the recommended contour level 0.110 . These images, in conjunction with the slice images, may facilitate assessment of whether an appropriate contour level has been provided.

3.3.3. Map analysis ?

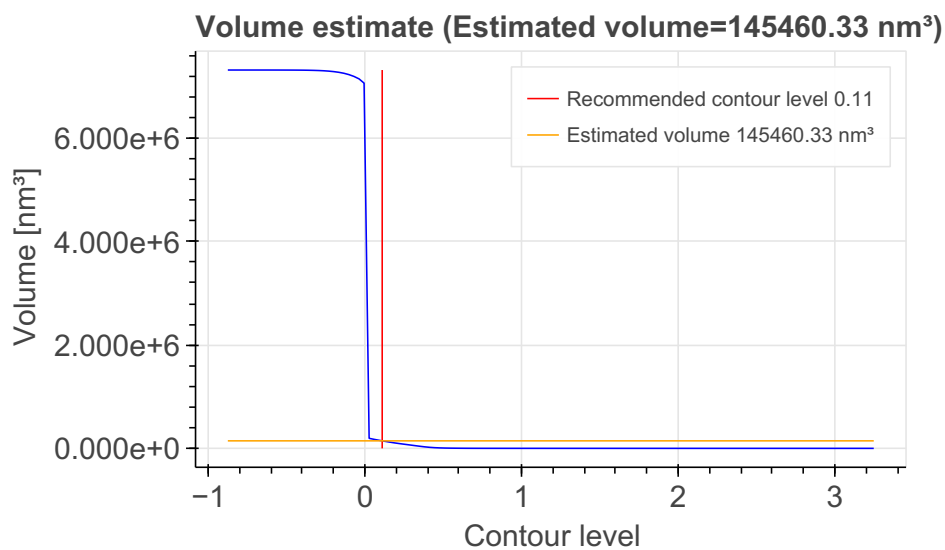
This section contains the results of statistical analysis of the map.

3.3.3.1. Map-value distribution ?



The map-value distribution is plotted in 128 intervals along the x-axis. The y-axis is logarithmic. A spike in this graph at zero usually indicates that the volume has been masked.

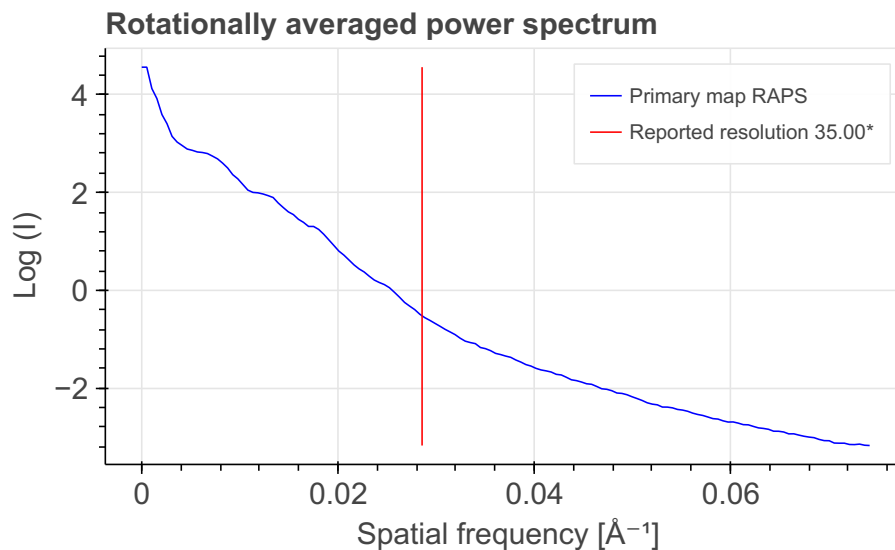
3.3.3.2. Volume estimate



The volume at the recommended contour level is 145460.33 nm³.

The volume estimate graph shows how the enclosed volume varies with the contour level. The recommended contour level is shown as a vertical line and the intersection between the line and the curve gives the volume of the enclosed surface at the given level.

3.3.3.3. Rotationally averaged power spectrum



*Reported resolution corresponds to spatial frequency of 0.029 \AA^{-1}

3.3.4. Fourier-Shell correlation ?

3.3.4.2. Resolution estimates ?

Resolution estimate (\AA)	Estimation criterion (FSC cut-off)		
	0.143	0.5	Half-bit
Reported by author	35.00	-	-

Author-provided FSC curve is not available.

4. Model quality ?

For models with atomic structures, MolProbity analysis is performed. For models with coarse-grained or multi-scale structures, excluded volume analysis is performed.

4.1b. MolProbity Analysis ?

Excluded volume satisfaction for the models in the entry are listed below. The Analysed column shows the number of particle-particle or particle-atom pairs for which excluded volume was analysed.

Standard geometry: bond outliers ?

There are 5247 bond length outliers in this entry (2.78% of 188545 assessed bonds). A summary is provided below. The output is limited to 100 rows.

Chain	Res	Type	Atoms	Z	Observed (\AA)	Ideal (\AA)	Model ID (Worst)	Models (Total)
D1	88	SER	N-CA	597.46	12.81	1.46	1	1
D2	88	SER	N-CA	597.44	12.81	1.46	1	1
A3	56	LEU	CA-C	534.48	12.75	1.52	1	1
A2	56	LEU	CA-C	534.44	12.75	1.52	1	1
A1	56	LEU	CA-C	475.08	11.50	1.52	1	1
A4	56	LEU	CA-C	475.06	11.50	1.52	1	1
d1	98	SER	N-CA	446.87	9.95	1.46	1	1

Chain	Res	Type	Atoms	Z	Observed (Å)	Ideal (Å)	Model ID (Worst)	Models (Total)
d2	98	SER	N-CA	446.84	9.95	1.46	1	1
A1	405	ASP	N-CA	426.15	9.55	1.46	1	1
A4	405	ASP	N-CA	426.14	9.55	1.46	1	1
A1	205	ASN	N-CA	395.34	8.97	1.46	1	1
A4	205	ASN	N-CA	395.29	8.97	1.46	1	1
B2	74	THR	CA-C	391.92	9.76	1.52	1	1
B1	74	THR	CA-C	391.88	9.75	1.52	1	1
B2	75	ILE	N-CA	385.13	8.78	1.46	1	1
B1	75	ILE	N-CA	385.09	8.77	1.46	1	1
C1	1651	ASP	N-CA	382.35	8.72	1.46	1	1
C2	1651	ASP	N-CA	382.34	8.72	1.46	1	1
J2	727	SER	CA-C	380.83	9.52	1.52	1	1
J1	727	SER	CA-C	380.79	9.52	1.52	1	1
J4	727	SER	CA-C	380.77	9.52	1.52	1	1
J3	727	SER	CA-C	380.77	9.52	1.52	1	1
B1	508	PRO	N-CD	380.45	6.80	1.47	1	1
B2	508	PRO	N-CD	380.37	6.80	1.47	1	1
D1	309	LEU	CA-C	377.22	9.45	1.52	1	1
D2	309	LEU	CA-C	377.22	9.45	1.52	1	1
B2	407	ALA	N-CA	376.73	8.62	1.46	1	1
B1	407	ALA	N-CA	376.65	8.61	1.46	1	1
D1	481	GLY	N-CA	358.81	7.19	1.45	1	1
D2	481	GLY	N-CA	358.73	7.19	1.45	1	1
I4	270	PRO	N-CD	347.59	6.34	1.47	1	1
I1	270	PRO	N-CD	347.55	6.34	1.47	1	1
I1	270	PRO	N-CA	342.81	6.61	1.47	1	1
I4	270	PRO	N-CA	342.72	6.61	1.47	1	1
D2	339	GLU	N-CA	337.73	7.87	1.46	1	1
D1	339	GLU	N-CA	337.72	7.87	1.46	1	1
A2	405	ASP	N-CA	329.78	7.72	1.46	1	1
A3	405	ASP	N-CA	329.71	7.72	1.46	1	1
B2	1567	GLN	CA-C	325.00	8.35	1.52	1	1
B1	1567	GLN	CA-C	324.89	8.35	1.52	1	1
C2	814	ASN	N-CA	321.77	7.57	1.46	1	1
C1	814	ASN	N-CA	321.77	7.57	1.46	1	1

Chain	Res	Type	Atoms	Z	Observed (Å)	Ideal (Å)	Model ID (Worst)	Models (Total)
C1	1644	ASP	CA-C	313.81	8.12	1.52	1	1
C2	1644	ASP	CA-C	313.76	8.11	1.52	1	1
d2	992	CYS	CA-C	312.75	8.09	1.52	1	1
d1	992	CYS	CA-C	312.75	8.09	1.52	1	1
A1	374	TYR	CA-C	308.27	8.00	1.52	1	1
A4	374	TYR	CA-C	308.25	8.00	1.52	1	1
I1	359	THR	CA-C	306.56	7.96	1.52	1	1
I3	359	THR	CA-C	306.50	7.96	1.52	1	1
I2	359	THR	CA-C	306.49	7.96	1.52	1	1
I4	359	THR	CA-C	306.47	7.96	1.52	1	1
B1	341	PHE	CA-C	303.52	7.90	1.52	1	1
B2	341	PHE	CA-C	303.46	7.90	1.52	1	1
A2	205	ASN	N-CA	301.79	7.19	1.46	1	1
A3	205	ASN	N-CA	301.74	7.19	1.46	1	1
H3	476	GLN	CA-C	298.54	7.79	1.52	1	1
H2	476	GLN	CA-C	298.52	7.79	1.52	1	1
H4	476	GLN	CA-C	298.48	7.79	1.52	1	1
H1	476	GLN	CA-C	298.46	7.79	1.52	1	1
I4	433	LYS	N-CA	297.91	7.12	1.46	1	1
I3	433	LYS	N-CA	297.90	7.12	1.46	1	1
I1	433	LYS	N-CA	297.90	7.12	1.46	1	1
I2	433	LYS	N-CA	297.87	7.12	1.46	1	1
B1	1056	LYS	N-CA	295.74	7.08	1.46	1	1
B2	1056	LYS	N-CA	295.65	7.08	1.46	1	1
B1	1593	HIS	N-CA	295.06	7.06	1.46	1	1
B2	1593	HIS	N-CA	295.03	7.06	1.46	1	1
C2	798	ASN	CA-C	292.83	7.67	1.52	1	1
C1	798	ASN	CA-C	292.76	7.67	1.52	1	1
I4	271	PRO	N-CD	287.72	5.50	1.47	1	1
I1	271	PRO	N-CD	287.59	5.50	1.47	1	1
d1	992	CYS	N-CA	284.38	6.86	1.46	1	1
d2	992	CYS	N-CA	284.32	6.86	1.46	1	1
H4	287	GLN	N-CA	283.05	6.84	1.46	1	1
H1	287	GLN	N-CA	282.97	6.83	1.46	1	1
I4	369	LEU	N-CA	280.40	6.79	1.46	1	1

Chain	Res	Type	Atoms	Z	Observed (Å)	Ideal (Å)	Model ID (Worst)	Models (Total)
I1	369	LEU	N-CA	280.40	6.79	1.46	1	1
I2	369	LEU	N-CA	280.31	6.78	1.46	1	1
I3	369	LEU	N-CA	280.22	6.78	1.46	1	1
B2	649	LYS	N-CA	278.67	6.75	1.46	1	1
B1	649	LYS	N-CA	278.64	6.75	1.46	1	1
B2	74	THR	N-CA	273.99	6.66	1.46	1	1
B1	74	THR	N-CA	273.96	6.66	1.46	1	1
B1	342	ASP	N-CA	272.77	6.64	1.46	1	1
B2	342	ASP	N-CA	272.66	6.64	1.46	1	1
B1	1383	GLN	N-CA	271.23	6.61	1.46	1	1
B2	1383	GLN	N-CA	271.20	6.61	1.46	1	1
B2	131	ASP	N-CA	268.11	6.55	1.46	1	1
B1	131	ASP	N-CA	268.07	6.55	1.46	1	1
A1	455	GLU	N-CA	267.35	6.54	1.46	1	1
A4	455	GLU	N-CA	267.30	6.54	1.46	1	1
B2	726	LYS	N-CA	266.43	6.52	1.46	1	1
B1	726	LYS	N-CA	266.39	6.52	1.46	1	1
B1	256	THR	N-CA	265.36	6.50	1.46	1	1
B2	256	THR	N-CA	265.36	6.50	1.46	1	1
B2	1157	GLY	N-CA	264.78	5.69	1.45	1	1
B1	1157	GLY	N-CA	264.76	5.69	1.45	1	1
I4	271	PRO	N-CA	264.17	5.43	1.47	1	1
I1	271	PRO	N-CA	264.07	5.43	1.47	1	1

Standard geometry: angle outliers

There are 15212 bond angle outliers in this entry (5.96% of 255161 assessed bonds). A summary is provided below. The output is limited to 100 rows.

Chain	Res	Type	Atoms	Z	Observed (Å)	Ideal (Å)	Model ID (Worst)	Models (Total)
A1	746	PRO	N-CA-CB	79.72	15.31	103.00	1	1
A4	746	PRO	N-CA-CB	79.66	15.37	103.00	1	1
B1	508	PRO	CA-N-CD	76.15	5.39	112.00	1	1
B2	508	PRO	CA-N-CD	76.14	5.41	112.00	1	1
D2	482	PRO	CA-N-CD	73.95	8.47	112.00	1	1
D1	482	PRO	CA-N-CD	73.94	8.48	112.00	1	1
C1	293	PRO	CA-N-CD	72.39	10.65	112.00	1	1

Chain	Res	Type	Atoms	Z	Observed (Å)	Ideal (Å)	Model ID (Worst)	Models (Total)
C2	293	PRO	CA-N-CD	72.32	10.75	112.00	1	1
B2	1566	TYR	C-N-CA	66.62	1.78	121.70	1	1
B1	1566	TYR	C-N-CA	66.61	1.80	121.70	1	1
C2	1584	ASN	CA-C-N	65.86	18.12	116.90	1	1
C1	1584	ASN	CA-C-N	65.85	18.12	116.90	1	1
D2	481	GLY	CA-C-N	65.14	19.18	116.90	1	1
D1	481	GLY	CA-C-N	65.14	19.19	116.90	1	1
B1	407	ALA	CA-C-N	64.77	19.75	116.90	1	1
B2	407	ALA	CA-C-N	64.76	19.76	116.90	1	1
I1	270	PRO	CA-N-CD	64.61	21.54	112.00	1	1
I4	270	PRO	CA-N-CD	64.60	21.55	112.00	1	1
C2	1126	PRO	CA-N-CD	64.24	22.06	112.00	1	1
C1	1126	PRO	CA-N-CD	64.21	22.10	112.00	1	1
A2	746	PRO	N-CA-CB	63.51	172.86	103.00	1	1
A3	746	PRO	N-CA-CB	63.42	172.76	103.00	1	1
A4	405	ASP	CA-C-N	62.82	22.66	116.90	1	1
A1	405	ASP	CA-C-N	62.82	22.66	116.90	1	1
A1	55	GLN	C-N-CA	62.49	9.22	121.70	1	1
A4	55	GLN	C-N-CA	62.47	9.26	121.70	1	1
I4	271	PRO	CA-N-CD	62.22	24.89	112.00	1	1
I1	271	PRO	CA-N-CD	62.21	24.91	112.00	1	1
J4	726	VAL	C-N-CA	62.19	9.75	121.70	1	1
J1	726	VAL	C-N-CA	62.18	9.77	121.70	1	1
J2	726	VAL	C-N-CA	62.17	9.80	121.70	1	1
J3	726	VAL	C-N-CA	62.15	9.82	121.70	1	1
A2	405	ASP	CA-C-N	61.13	25.21	116.90	1	1
A3	405	ASP	CA-C-N	61.11	25.24	116.90	1	1
d1	1015	GLU	C-N-CA	60.87	12.13	121.70	1	1
C2	797	LEU	C-N-CA	60.86	12.15	121.70	1	1
d2	1015	GLU	C-N-CA	60.82	12.22	121.70	1	1
C1	797	LEU	C-N-CA	60.82	12.23	121.70	1	1
I2	271	PRO	CA-N-CD	60.61	27.14	112.00	1	1
I3	271	PRO	CA-N-CD	60.61	27.15	112.00	1	1
d2	831	LYS	CA-C-O	60.37	18.17	120.80	1	1
d1	831	LYS	CA-C-O	60.34	18.22	120.80	1	1

Chain	Res	Type	Atoms	Z	Observed (Å)	Ideal (Å)	Model ID (Worst)	Models (Total)
B1	1400	PRO	CA-N-CD	60.15	27.79	112.00	1	1
B2	1400	PRO	CA-N-CD	60.15	27.79	112.00	1	1
A3	359	ASN	C-N-CA	60.14	13.45	121.70	1	1
A2	359	ASN	C-N-CA	60.11	13.51	121.70	1	1
B2	90	ALA	C-N-CA	59.57	14.48	121.70	1	1
B1	90	ALA	C-N-CA	59.56	14.49	121.70	1	1
I3	270	PRO	CA-N-CD	59.41	28.83	112.00	1	1
I2	270	PRO	CA-N-CD	59.40	28.83	112.00	1	1
B2	405	SER	C-N-CA	59.02	15.46	121.70	1	1
B1	405	SER	C-N-CA	59.00	15.50	121.70	1	1
D1	932	ILE	C-N-CA	58.64	16.14	121.70	1	1
D2	932	ILE	C-N-CA	58.62	16.19	121.70	1	1
B1	408	PRO	CA-N-CD	58.54	30.04	112.00	1	1
B2	408	PRO	CA-N-CD	58.54	30.05	112.00	1	1
A1	746	PRO	C-N-CA	58.24	16.87	121.70	1	1
A4	746	PRO	C-N-CA	58.23	16.88	121.70	1	1
A2	20	LYS	CA-C-O	58.16	21.93	120.80	1	1
A3	20	LYS	CA-C-O	58.13	21.98	120.80	1	1
A1	515	LEU	N-CA-CB	58.05	11.82	110.50	1	1
A4	515	LEU	N-CA-CB	58.03	11.85	110.50	1	1
B1	1099	PHE	C-N-CA	58.02	17.26	121.70	1	1
B2	1099	PHE	C-N-CA	58.00	17.31	121.70	1	1
B2	165	ASN	C-N-CA	57.71	17.82	121.70	1	1
B1	165	ASN	C-N-CA	57.71	17.82	121.70	1	1
D2	961	PRO	CA-N-CD	57.52	31.47	112.00	1	1
D1	961	PRO	CA-N-CD	57.51	31.49	112.00	1	1
d2	1061	PRO	CA-N-CD	57.49	31.51	112.00	1	1
d1	1061	PRO	CA-N-CD	57.46	31.56	112.00	1	1
C2	1072	PRO	N-CA-CB	57.18	165.90	103.00	1	1
C1	1072	PRO	N-CA-CB	57.12	165.83	103.00	1	1
A1	359	ASN	C-N-CA	57.09	18.94	121.70	1	1
A4	359	ASN	C-N-CA	57.08	18.95	121.70	1	1
D2	514	ARG	C-N-CA	56.54	19.92	121.70	1	1
D1	514	ARG	C-N-CA	56.50	20.00	121.70	1	1
B1	1009	PRO	CA-N-CD	55.74	33.96	112.00	1	1

Chain	Res	Type	Atoms	Z	Observed (Å)	Ideal (Å)	Model ID (Worst)	Models (Total)
B2	1009	PRO	CA-N-CD	55.73	33.98	112.00	1	1
I2	358	LEU	C-N-CA	55.72	21.41	121.70	1	1
I3	358	LEU	C-N-CA	55.68	21.48	121.70	1	1
I1	358	LEU	C-N-CA	55.63	21.56	121.70	1	1
I4	358	LEU	C-N-CA	55.62	21.58	121.70	1	1
A4	373	ALA	C-N-CA	55.43	21.93	121.70	1	1
A1	373	ALA	C-N-CA	55.41	21.96	121.70	1	1
I3	406	PHE	C-N-CA	55.34	22.09	121.70	1	1
I4	406	PHE	C-N-CA	55.33	22.10	121.70	1	1
I1	406	PHE	C-N-CA	55.33	22.11	121.70	1	1
I2	406	PHE	C-N-CA	55.28	22.19	121.70	1	1
D2	729	PHE	C-N-CA	55.24	22.27	121.70	1	1
D1	729	PHE	C-N-CA	55.24	22.27	121.70	1	1
C1	1272	LEU	CA-C-O	55.22	26.92	120.80	1	1
C2	1272	LEU	CA-C-O	55.22	26.93	120.80	1	1
D2	829	LEU	C-N-CA	54.89	22.89	121.70	1	1
D1	829	LEU	C-N-CA	54.87	22.93	121.70	1	1
D1	339	GLU	CA-C-N	54.51	7.18	116.20	1	1
D2	339	GLU	CA-C-N	54.49	7.22	116.20	1	1
C2	1471	LYS	CA-C-O	54.41	28.31	120.80	1	1
C1	1471	LYS	CA-C-O	54.40	28.32	120.80	1	1
B2	34	ALA	O-C-N	54.16	36.35	123.00	1	1
J3	637	LEU	CA-C-N	54.12	7.96	116.20	1	1

Too-close contacts ?

The following all-atom clashscore is based on a MolProbity analysis. All-atom clashscore is defined as the number of clashes found per 1000 atoms (including hydrogen atoms). The table below contains clashscores for all atomic models in this entry.

Model ID	Clash score	Number of clashes
1	0.00	0

There are no too-close contacts.

Torsion angles: Protein backbone ?

In the following table, Ramachandran outliers are listed. The Analysed column shows the number of residues for which the backbone conformation was analysed.

Model ID	Analysed	Favored	Allowed	Outliers
1	22620	20027	1620	973

There are 973 unique backbone outliers. Detailed list of outliers are tabulated below. The output is limited to 100 rows.

Chain	Res	Type	Models (Total)
A1	21	LYS	1
A1	35	ALA	1
A1	37	SER	1
A1	46	ILE	1
A1	47	ASN	1
A1	55	GLN	1
A1	264	LYS	1
A1	268	ILE	1
A1	269	ASN	1
A1	297	GLY	1
A1	316	ALA	1
A1	317	ASP	1
A1	328	ILE	1
A1	346	ILE	1
A1	359	ASN	1
A1	406	PRO	1
A1	423	LYS	1
A1	470	GLY	1
A1	474	PHE	1
A1	475	SER	1
A1	476	ASN	1
A1	613	VAL	1
A1	675	VAL	1
A1	697	PHE	1
A1	732	TRP	1
A1	744	LEU	1
A1	746	PRO	1
A1	764	ASP	1
A1	765	ASP	1
A1	795	GLN	1
A1	834	ASN	1
A2	35	ALA	1
A2	37	SER	1
A2	46	ILE	1

Chain	Res	Type	Models (Total)
A2	47	ASN	1
A2	55	GLN	1
A2	264	LYS	1
A2	268	ILE	1
A2	269	ASN	1
A2	297	GLY	1
A2	316	ALA	1
A2	317	ASP	1
A2	328	ILE	1
A2	346	ILE	1
A2	359	ASN	1
A2	373	ALA	1
A2	406	PRO	1
A2	423	LYS	1
A2	470	GLY	1
A2	474	PHE	1
A2	475	SER	1
A2	476	ASN	1
A2	613	VAL	1
A2	675	VAL	1
A2	697	PHE	1
A2	732	TRP	1
A2	744	LEU	1
A2	746	PRO	1
A2	764	ASP	1
A2	765	ASP	1
A2	795	GLN	1
A3	35	ALA	1
A3	37	SER	1
A3	46	ILE	1
A3	47	ASN	1
A3	55	GLN	1
A3	264	LYS	1
A3	268	ILE	1
A3	269	ASN	1

Chain	Res	Type	Models (Total)
A3	297	GLY	1
A3	316	ALA	1
A3	317	ASP	1
A3	328	ILE	1
A3	346	ILE	1
A3	359	ASN	1
A3	373	ALA	1
A3	406	PRO	1
A3	423	LYS	1
A3	470	GLY	1
A3	474	PHE	1
A3	475	SER	1
A3	476	ASN	1
A3	613	VAL	1
A3	675	VAL	1
A3	697	PHE	1
A3	732	TRP	1
A3	744	LEU	1
A3	746	PRO	1
A3	764	ASP	1
A3	765	ASP	1
A3	795	GLN	1
A4	21	LYS	1
A4	35	ALA	1
A4	37	SER	1
A4	46	ILE	1
A4	47	ASN	1
A4	55	GLN	1
A4	264	LYS	1
A4	268	ILE	1
A4	269	ASN	1

Torsion angles : Protein sidechains

In the following table, sidechain rotameric outliers are listed. The Analysed column shows the number of residues for which the sidechain conformation was analysed.

Model ID	Analysed	Favored	Allowed	Outliers
1	20472	17620	1546	1306

There are 1306 unique sidechain outliers. Detailed list of outliers are tabulated below. The output is limited to 100 rows.

Chain	Res	Type	Models (Total)
A1	22	LEU	1
A1	37	SER	1
A1	47	ASN	1
A1	56	LEU	1
A1	205	ASN	1
A1	206	ASN	1
A1	232	PHE	1
A1	272	GLU	1
A1	312	LYS	1
A1	313	LEU	1
A1	318	LYS	1
A1	360	ILE	1
A1	374	TYR	1
A1	405	ASP	1
A1	406	PRO	1
A1	429	THR	1
A1	439	HIS	1
A1	444	LYS	1
A1	500	GLU	1
A1	515	LEU	1
A1	542	THR	1
A1	625	GLU	1
A1	668	SER	1
A1	672	GLN	1
A1	683	THR	1
A1	697	PHE	1
A1	746	PRO	1
A1	747	PHE	1
A1	754	ARG	1
A1	765	ASP	1
A1	795	GLN	1

Chain	Res	Type	Models (Total)
A1	834	ASN	1
A1	835	ILE	1
A2	20	LYS	1
A2	22	LEU	1
A2	37	SER	1
A2	47	ASN	1
A2	56	LEU	1
A2	232	PHE	1
A2	272	GLU	1
A2	312	LYS	1
A2	313	LEU	1
A2	318	LYS	1
A2	360	ILE	1
A2	367	PHE	1
A2	374	TYR	1
A2	405	ASP	1
A2	429	THR	1
A2	439	HIS	1
A2	500	GLU	1
A2	515	LEU	1
A2	542	THR	1
A2	625	GLU	1
A2	668	SER	1
A2	672	GLN	1
A2	683	THR	1
A2	697	PHE	1
A2	746	PRO	1
A2	747	PHE	1
A2	754	ARG	1
A2	765	ASP	1
A2	795	GLN	1
A3	20	LYS	1
A3	22	LEU	1
A3	37	SER	1
A3	47	ASN	1

Chain	Res	Type	Models (Total)
A3	56	LEU	1
A3	232	PHE	1
A3	272	GLU	1
A3	312	LYS	1
A3	313	LEU	1
A3	318	LYS	1
A3	360	ILE	1
A3	367	PHE	1
A3	374	TYR	1
A3	405	ASP	1
A3	429	THR	1
A3	439	HIS	1
A3	500	GLU	1
A3	515	LEU	1
A3	542	THR	1
A3	625	GLU	1
A3	668	SER	1
A3	672	GLN	1
A3	683	THR	1
A3	697	PHE	1
A3	746	PRO	1
A3	747	PHE	1
A3	754	ARG	1
A3	765	ASP	1
A3	795	GLN	1
A4	22	LEU	1
A4	37	SER	1
A4	47	ASN	1
A4	56	LEU	1
A4	205	ASN	1
A4	206	ASN	1
A4	232	PHE	1
A4	272	GLU	1
A4	312	LYS	1

5. Fit to Data Used for Modeling Assessment ?

5.3. 3DEM

This section describes fit of models to the 3DEM data. Only results for the representative model, selected as a first model with the largest number of asymmetric units.

[EMD-10660](#)

Model to data fit analysis is not available.

6. Fit to Data Used for Validation Assessment ?

Validation for this section is under development.

Acknowledgments

The development of integrative model validation metrics, implementation of a model validation pipeline, and creation of a validation report for integrative structures are funded by NSF awards to the [PDB-IHM team](#) (DBI-1756248, DBI-2112966, DBI-2112967, DBI-2112968, and DBI-1756250) and awards from NSF, NIH, and DOE to the [RCSB PDB](#) (DBI-2321666, R01GM157729, and DE-SC0019749). The PDB-IHM team and members of the [Sali lab](#) contributed model validation metrics and software packages.

Dr. Jill Trewhella, Dr. Dina Schneidman, and members of the [SASBDB](#) repository are acknowledged for their advice and support in implementing SAS validation methods. Team members from the labs of Dr. Juri Rappsilber; Dr. Alexander Leitner; Dr. Andrea Graziadei, and members of [PRIDE](#) database are acknowledged for their advice and support in implementing crosslinking-MS validation methods. We are grateful to Dr. Shruthi Viswanath for discussions about uncertainty assessment of integrative structural models.

Members of the [wwPDB Integrative/Hybrid Methods Task Force](#) provided recommendations and community support for the project.