



Full wwPDB EM Validation Report ⓘ

Nov 18, 2025 – 04:41 pm GMT

PDB ID : 9HVE / pdb_00009hve
EMDB ID : EMD-52433
Title : Native human eIF2-eIF2B complex
Authors : De Miguel, C.; Thorkelsson, S.R.; Wang, C.; Bertolotti, A.
Deposited on : 2024-12-27
Resolution : 2.70 Å (reported)
Based on initial model : .

This is a Full wwPDB EM Validation Report for a publicly released PDB entry.

We welcome your comments at validation@mail.wwpdb.org

A user guide is available at

<https://www.wwpdb.org/validation/2017/EMValidationReportHelp>

with specific help available everywhere you see the ⓘ symbol.

The types of validation reports are described at

<http://www.wwpdb.org/validation/2017/FAQs#types>.

The following versions of software and data (see [references ⓘ](#)) were used in the production of this report:

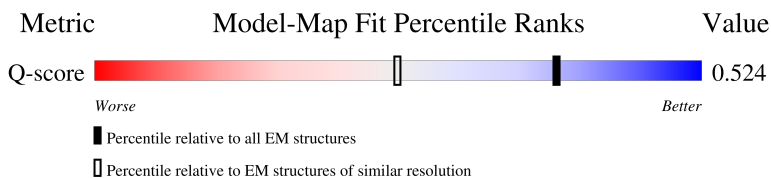
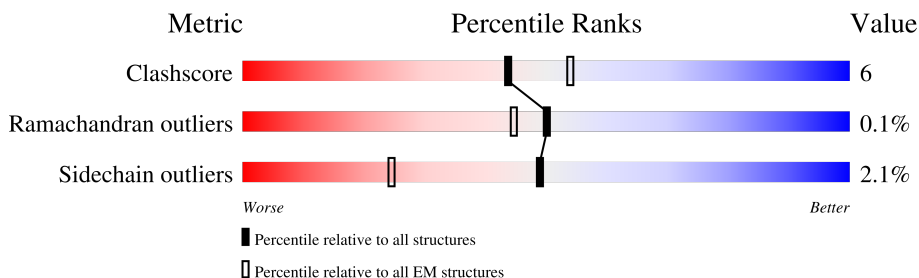
EMDB validation analysis : 0.0.1.dev129
Mogul : 1.8.4, CSD as541be (2020)
MolProbity : 4-5-2 with Phenix2.0
buster-report : 1.1.7 (2018)
Percentile statistics : 20231227.v01 (using entries in the PDB archive December 27th 2023)
EM percentile statistics : 202505.v01 (Using data in the EMDB archive up until May 2025)
MapQ : 1.9.13
Ideal geometry (proteins) : Engh & Huber (2001)
Ideal geometry (DNA, RNA) : Parkinson et al. (1996)
Validation Pipeline (wwPDB-VP) : 2.46

1 Overall quality at a glance i

The following experimental techniques were used to determine the structure:
ELECTRON MICROSCOPY

The reported resolution of this entry is 2.70 Å.

Percentile scores (ranging between 0-100) for global validation metrics of the entry are shown in the following graphic. The table shows the number of entries on which the scores are based.



Metric	Whole archive (#Entries)	EM structures (#Entries)	Similar EM resolution (#Entries, resolution range(Å))
Clashscore	210492	15764	-
Ramachandran outliers	207382	16835	-
Sidechain outliers	206894	16415	-
Q-score	-	25397	10327 (2.20 - 3.20)

The table below summarises the geometric issues observed across the polymeric chains and their fit to the map. The red, orange, yellow and green segments of the bar indicate the fraction of residues that contain outliers for ≥ 3 , 2, 1 and 0 types of geometric quality criteria respectively. A grey segment represents the fraction of residues that are not modelled. The numeric value for each fraction is indicated below the corresponding segment, with a dot representing fractions $\leq 5\%$. The upper red bar (where present) indicates the fraction of residues that have poor fit to the EM map (all-atom inclusion $< 40\%$). The numeric value is given above the bar.

Mol	Chain	Length	Quality of chain
1	E	452	
1	F	452	
2	K	315	
2	L	315	

Continued on next page...

Continued from previous page...

Mol	Chain	Length	Quality of chain
3	I	721	 10% 73% 14% 13%
3	J	721	 9% 72% 16% 13%
4	O	472	 7% 78% 19% 13%
4	P	472	 6% 82% 15% 13%
5	C	351	 1% 84% 14% 13%
5	D	351	 1% 84% 13% 13%
6	A	305	 1% 81% 17% 13%
6	B	305	 1% 85% 14% 13%
7	G	523	 1% 63% 6% 31%
7	H	523	 1% 62% 6% 31%
8	M	333	 1% 1% 93%
8	N	333	 1% 1% 93%

2 Entry composition [i](#)

There are 9 unique types of molecules in this entry. The entry contains 44088 atoms, of which 0 are hydrogens and 0 are deuteriums.

In the tables below, the AltConf column contains the number of residues with at least one atom in alternate conformation and the Trace column contains the number of residues modelled with at most 2 atoms.

- Molecule 1 is a protein called Translation initiation factor eIF-2B subunit gamma.

Mol	Chain	Residues	Atoms					AltConf	Trace
			Total	C	N	O	S		
1	F	416	Total	C	N	O	S	0	0
			3212	2034	549	604	25		
1	E	416	Total	C	N	O	S	0	0
			3212	2034	549	604	25		

- Molecule 2 is a protein called Eukaryotic translation initiation factor 2 subunit 1.

Mol	Chain	Residues	Atoms					AltConf	Trace
			Total	C	N	O	S		
2	K	278	Total	C	N	O	S	0	0
			2233	1409	390	422	12		
2	L	278	Total	C	N	O	S	0	0
			2233	1409	390	422	12		

- Molecule 3 is a protein called Translation initiation factor eIF2B subunit epsilon.

Mol	Chain	Residues	Atoms					AltConf	Trace
			Total	C	N	O	S		
3	I	630	Total	C	N	O	S	0	0
			4993	3159	860	949	25		
3	J	630	Total	C	N	O	S	0	0
			4993	3159	860	949	25		

- Molecule 4 is a protein called Eukaryotic translation initiation factor 2 subunit 3.

Mol	Chain	Residues	Atoms					AltConf	Trace
			Total	C	N	O	S		
4	O	460	Total	C	N	O	S	0	0
			3508	2227	616	648	17		
4	P	460	Total	C	N	O	S	0	0
			3508	2227	616	648	17		

- Molecule 5 is a protein called Translation initiation factor eIF2B subunit beta.

Mol	Chain	Residues	Atoms					AltConf	Trace
5	D	346	Total	C	N	O	S	0	0
			2707	1704	476	512	15		
5	C	346	Total	C	N	O	S	0	0
			2707	1704	476	512	15		

- Molecule 6 is a protein called Translation initiation factor eIF-2B subunit alpha.

Mol	Chain	Residues	Atoms					AltConf	Trace
6	A	301	Total	C	N	O	S	0	0
			2338	1498	387	441	12		
6	B	301	Total	C	N	O	S	0	0
			2338	1498	387	441	12		

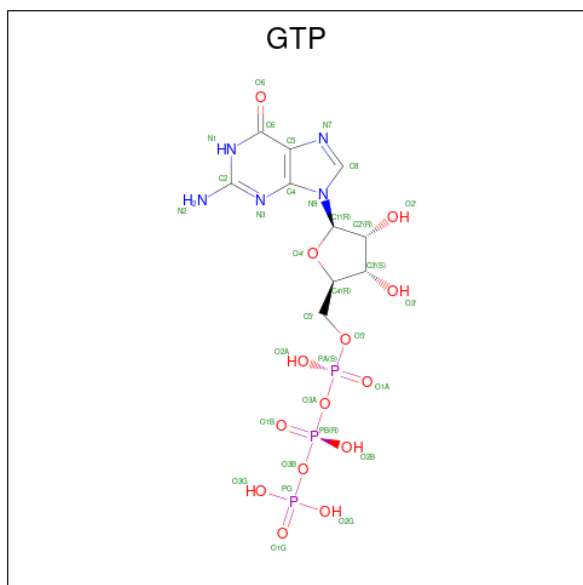
- Molecule 7 is a protein called Translation initiation factor eIF-2B subunit delta.

Mol	Chain	Residues	Atoms					AltConf	Trace
7	H	360	Total	C	N	O	S	0	0
			2809	1772	503	520	14		
7	G	360	Total	C	N	O	S	0	0
			2809	1772	503	520	14		

- Molecule 8 is a protein called Eukaryotic translation initiation factor 2 subunit 2.

Mol	Chain	Residues	Atoms					AltConf	Trace
8	M	24	Total	C	N	O	S	0	0
			212	134	37	40	1		
8	N	24	Total	C	N	O	S	0	0
			212	134	37	40	1		

- Molecule 9 is GUANOSINE-5'-TRIPHOSPHATE (CCD ID: GTP) (formula: C₁₀H₁₆N₅O₁₄P₃) (labeled as "Ligand of Interest" by depositor).

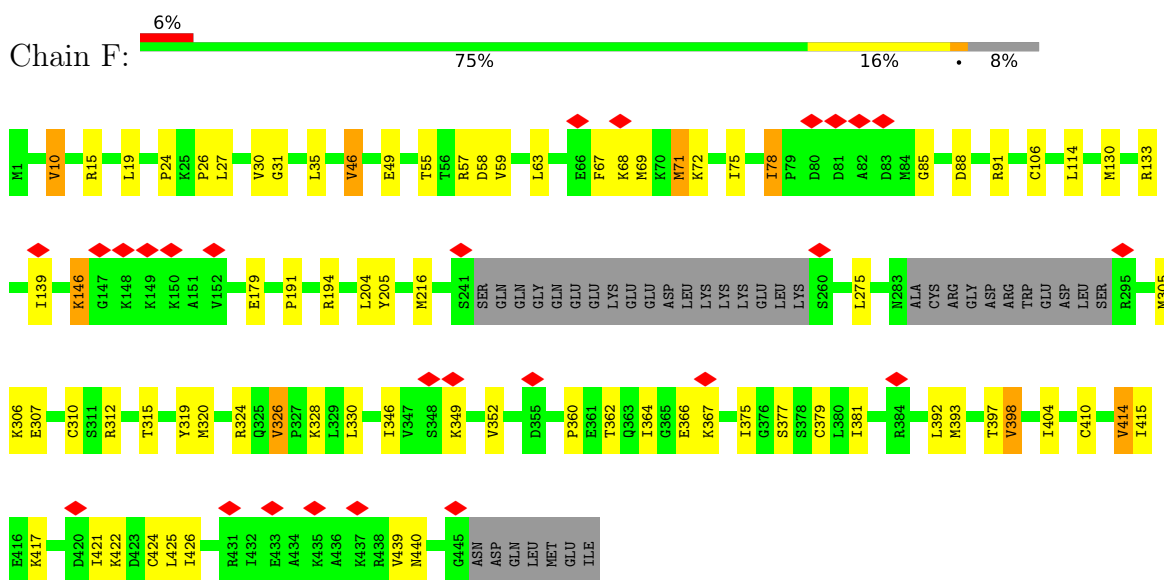


Mol	Chain	Residues	Atoms					AltConf
			Total	C	N	O	P	
9	F	1	32	10	5	14	3	0
9	E	1	32	10	5	14	3	0

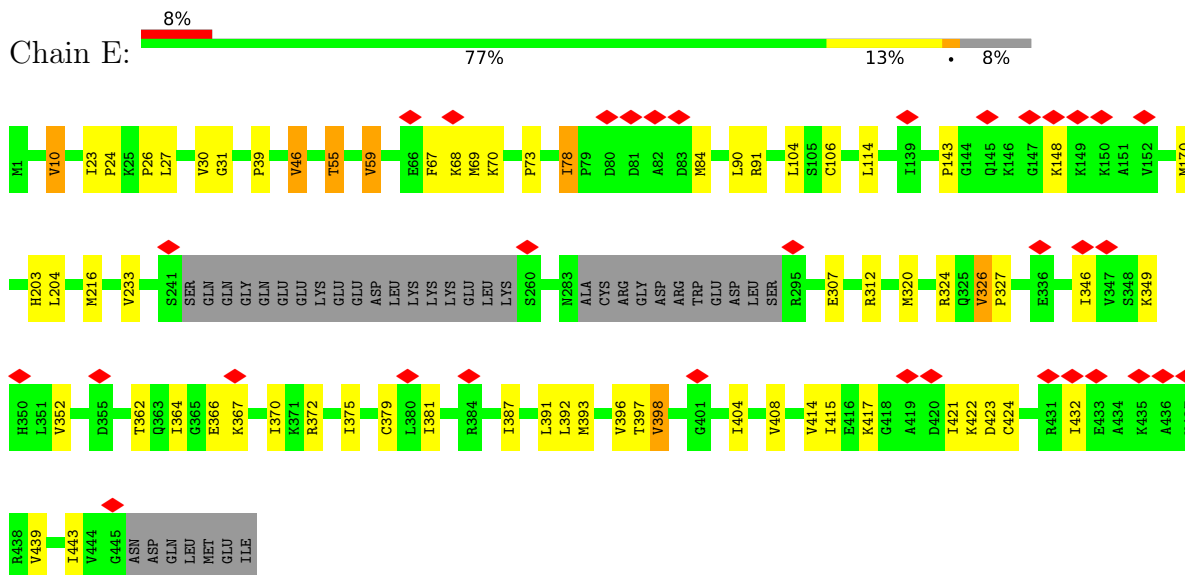
3 Residue-property plots [i](#)

These plots are drawn for all protein, RNA, DNA and oligosaccharide chains in the entry. The first graphic for a chain summarises the proportions of the various outlier classes displayed in the second graphic. The second graphic shows the sequence view annotated by issues in geometry and atom inclusion in map density. Residues are color-coded according to the number of geometric quality criteria for which they contain at least one outlier: green = 0, yellow = 1, orange = 2 and red = 3 or more. A red diamond above a residue indicates a poor fit to the EM map for this residue (all-atom inclusion < 40%). Stretches of 2 or more consecutive residues without any outlier are shown as a green connector. Residues present in the sample, but not in the model, are shown in grey.

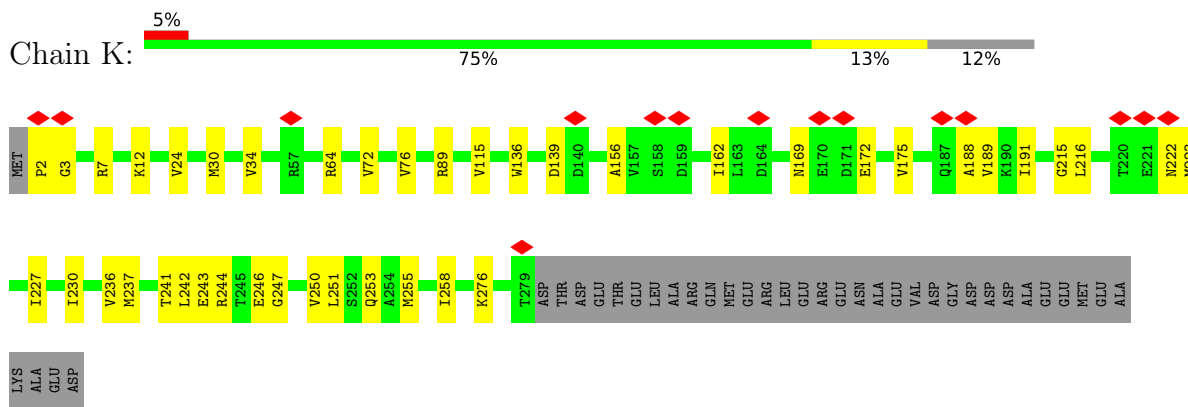
- Molecule 1: Translation initiation factor eIF-2B subunit gamma



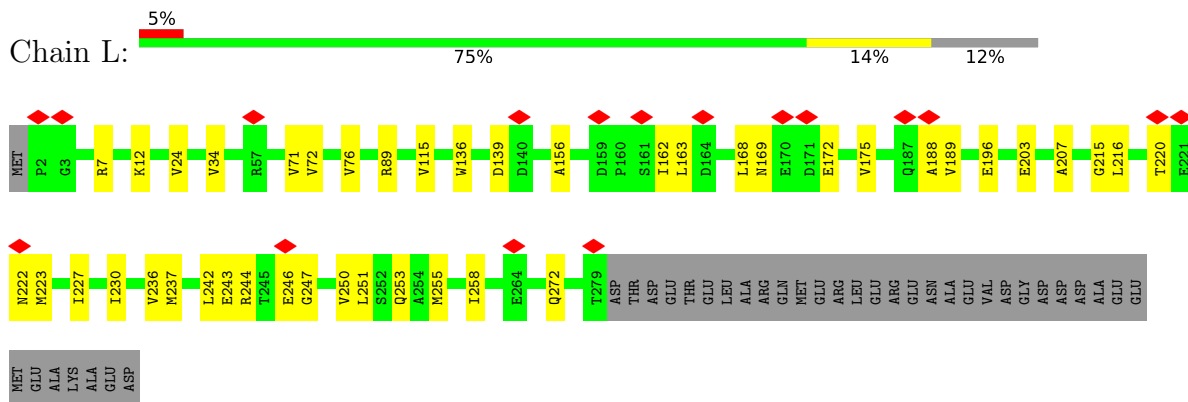
- Molecule 1: Translation initiation factor eIF-2B subunit gamma



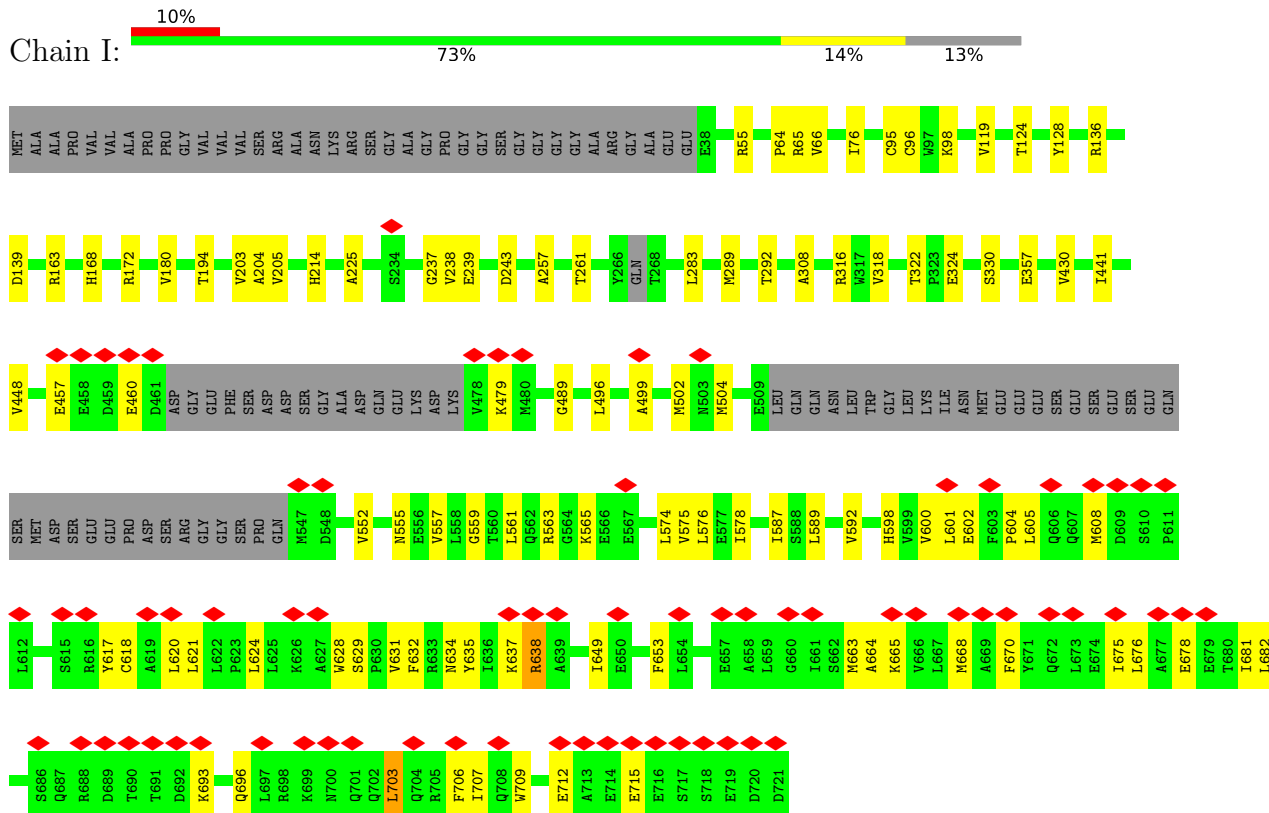
- Molecule 2: Eukaryotic translation initiation factor 2 subunit 1



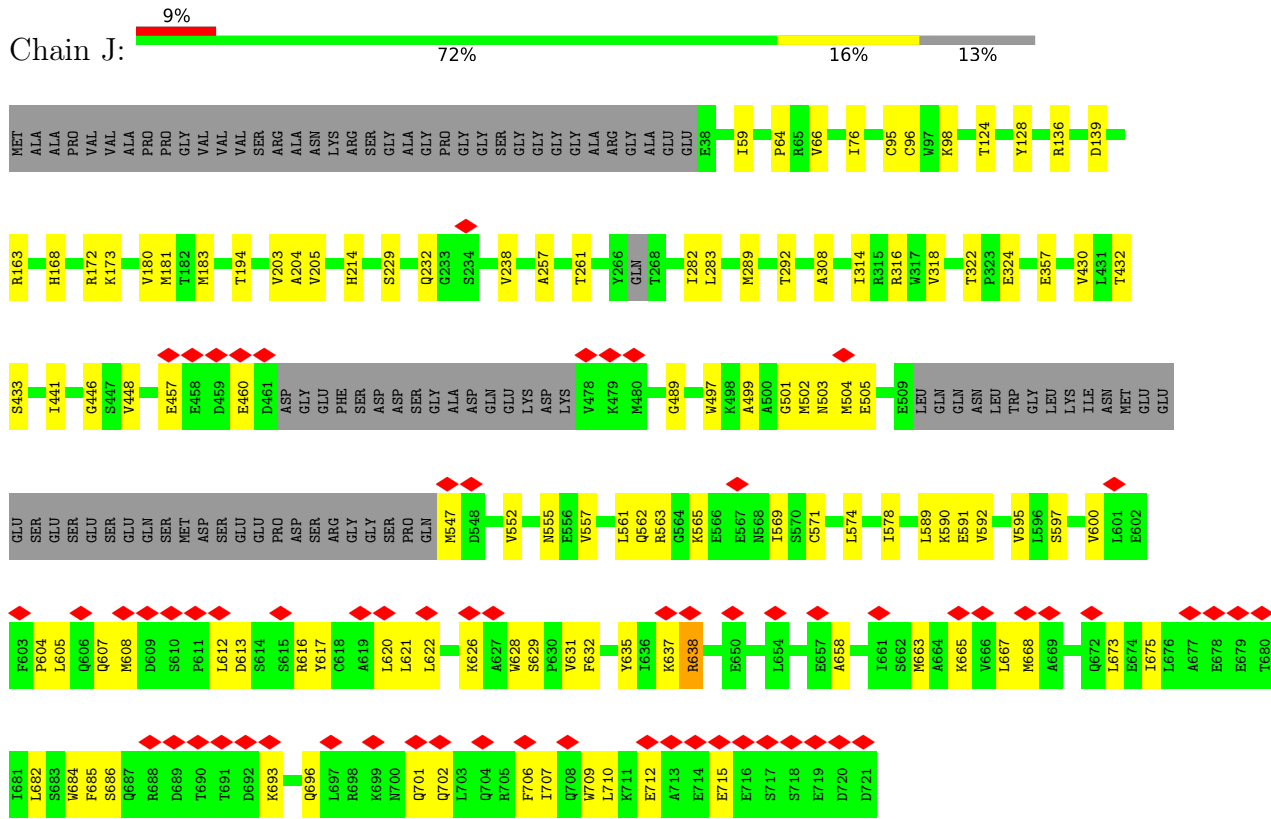
• Molecule 2: Eukaryotic translation initiation factor 2 subunit 1



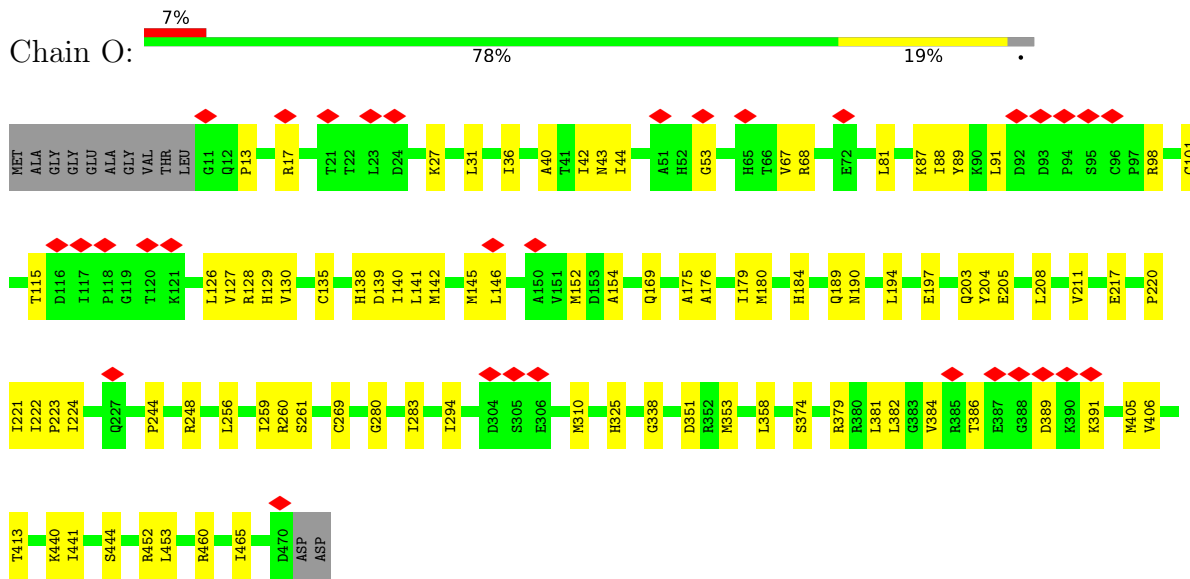
• Molecule 3: Translation initiation factor eIF2B subunit epsilon



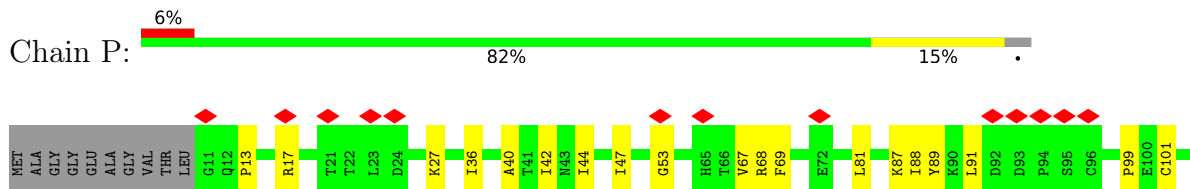
● Molecule 3: Translation initiation factor eIF2B subunit epsilon

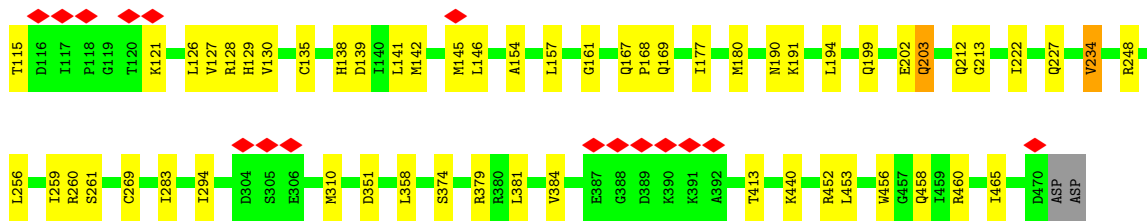


● Molecule 4: Eukaryotic translation initiation factor 2 subunit 3

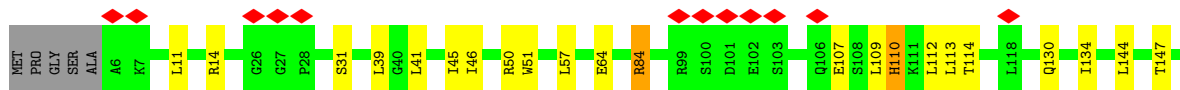
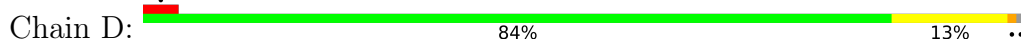


● Molecule 4: Eukaryotic translation initiation factor 2 subunit 3

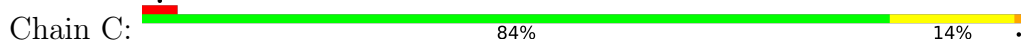




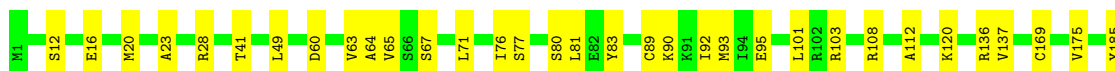
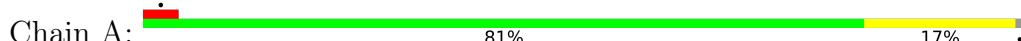
• Molecule 5: Translation initiation factor eIF2B subunit beta



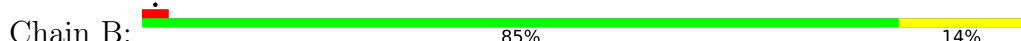
• Molecule 5: Translation initiation factor eIF2B subunit beta



• Molecule 6: Translation initiation factor eIF-2B subunit alpha



• Molecule 6: Translation initiation factor eIF-2B subunit alpha



ARG
CYS
SER
VAL
ALA
SER
SER
ILE
LYS
THR
GLY
PHE
GLN
ALA
VAL
THR
GLY
ARG
ARG
ALA
GLN
LEU
LEU
ALA
ALA
ASN

● Molecule 8: Eukaryotic translation initiation factor 2 subunit 2

Chain N:  . . . 93%

MET
SER
GLY
LYS
ASP
GLU
MET
ILE
SER
PHE
ASP
THR
LEU
ASP
MET
SER
LEU
LYS
LYS
LYS
LYS
LYS
LYS
LYS
LYS
PRO
PHE
MET
LYS
ASP
GLU
GLY

THR
ARG
LYS
LYS
ASP
SER
ALA
SER
ASP
ASP
LEU
ASN
LEU
ASN
PHE
LYS
ASN
GLN
LYS
LYS
LYS
LYS
LYS
LYS
PHE
LYS
THR
LYS
LYS
ILE
GLY
LEU
ASP

LEU
GLY
ASN
LYS
LYS
LYS
LYS
VAL
VAL
PHE
PRO
ASP
GLU
GLU
ILE
LEU
LEU
GLU
ASP
ASP
ASN
LYS
LYS
LYS
ASP
GLY
GLY
SER
PHE
SER
ASN
GLN
GLY
THR
PRO
ALA
W1
A2
G3
T9
L13
L14
N15
R16
V17
F18
N19
I20

M21
R22
E23
K24
ASN
PRO
ASP
MET
VAL
VAL
ALA
GLY
GLY
LYS
ARG
LYS
PHE
PHE
VAL
VAL
LYS
LYS
PRO
PRO
GLN
ASN
VAL
VAL
VAL
ARG
VAL
GLY
THR
LYS
LYS
LYS
THR
SER
PHE
VAL
ASN
PHE
THR
THR
ASP
ILE
CYS
LYS
LEU
LEU
HIS
ARG
GLN
GLN
PRO
LYS
THR
HIS
LEU
LEU
LEU
ALA
PHE
LEU
GLN
CYS
GLY
GLY
THR
CYS
GLY
THR

SER
GLY
SER
ILE
ASP
GLY
ASN
ASN
GLN
LEU
VAL
VAL
ILE
LYS
GLY
ARG
LYS
GLN
PHE
GLN
LYS
GLN
ILE
LEU
GLU
ASN
VAL
LEU
ARG
TYR
ILE
LYS
GLY
TYR
VAL
THR
CYS
HIS
THR
CYS
ARG
SER
PRO
ASP
THR
ILE
LEU
GLN
LYS
ASP
THR
ARG
LEU
TYR
PHE
LEU
GLN
CYS
GLY
THR
CYS
HIS

SER
ARG
CYS
SER
VAL
ALA
SER
SER
ILE
LYS
THR
GLY
PHE
GLN
ALA
VAL
THR
GLY
ARG
ALA
GLN
ALA
ASN

4 Experimental information

Property	Value	Source
EM reconstruction method	SINGLE PARTICLE	Depositor
Imposed symmetry	POINT, C2	Depositor
Number of particles used	256000	Depositor
Resolution determination method	FSC 0.143 CUT-OFF	Depositor
CTF correction method	PHASE FLIPPING AND AMPLITUDE CORRECTION	Depositor
Microscope	TFS KRIOS	Depositor
Voltage (kV)	300	Depositor
Electron dose ($e^-/\text{\AA}^2$)	50	Depositor
Minimum defocus (nm)	1000	Depositor
Maximum defocus (nm)	3000	Depositor
Magnification	105000	Depositor
Image detector	GATAN K3 BIOQUANTUM (6k x 4k)	Depositor
Maximum map value	0.779	Depositor
Minimum map value	-0.296	Depositor
Average map value	-0.001	Depositor
Map value standard deviation	0.016	Depositor
Recommended contour level	0.13	Depositor
Map size (Å)	494.4, 494.4, 494.4	wwPDB
Map dimensions	600, 600, 600	wwPDB
Map angles (°)	90.0, 90.0, 90.0	wwPDB
Pixel spacing (Å)	0.824, 0.824, 0.824	Depositor

5 Model quality [i](#)

5.1 Standard geometry [i](#)

Bond lengths and bond angles in the following residue types are not validated in this section: GTP

The Z score for a bond length (or angle) is the number of standard deviations the observed value is removed from the expected value. A bond length (or angle) with $|Z| > 5$ is considered an outlier worth inspection. RMSZ is the root-mean-square of all Z scores of the bond lengths (or angles).

Mol	Chain	Bond lengths		Bond angles	
		RMSZ	# Z >5	RMSZ	# Z >5
1	E	0.14	0/3259	0.31	0/4400
1	F	0.13	0/3259	0.30	0/4400
2	K	0.13	0/2266	0.33	0/3055
2	L	0.13	0/2266	0.32	0/3055
3	I	0.15	0/5091	0.35	0/6905
3	J	0.15	0/5091	0.34	0/6905
4	O	0.12	0/3566	0.31	0/4825
4	P	0.12	0/3566	0.32	0/4825
5	C	0.16	0/2758	0.29	0/3727
5	D	0.16	0/2758	0.28	0/3727
6	A	0.14	0/2374	0.26	0/3204
6	B	0.14	0/2374	0.27	0/3204
7	G	0.16	0/2861	0.26	0/3885
7	H	0.16	0/2861	0.25	0/3885
8	M	0.21	0/216	0.76	1/289 (0.3%)
8	N	0.20	0/216	0.67	0/289
All	All	0.15	0/44782	0.31	1/60580 (0.0%)

There are no bond length outliers.

All (1) bond angle outliers are listed below:

Mol	Chain	Res	Type	Atoms	Z	Observed(°)	Ideal(°)
8	M	21	MET	CA-CB-CG	5.41	124.92	114.10

There are no chirality outliers.

There are no planarity outliers.

5.2 Too-close contacts [i](#)

In the following table, the Non-H and H(model) columns list the number of non-hydrogen atoms and hydrogen atoms in the chain respectively. The H(added) column lists the number of hydrogen atoms added and optimized by MolProbity. The Clashes column lists the number of clashes within the asymmetric unit, whereas Symm-Clashes lists symmetry-related clashes.

Mol	Chain	Non-H	H(model)	H(added)	Clashes	Symm-Clashes
1	E	3212	0	3321	47	0
1	F	3212	0	3321	58	0
2	K	2233	0	2284	29	0
2	L	2233	0	2284	28	0
3	I	4993	0	4946	61	0
3	J	4993	0	4946	75	0
4	O	3508	0	3664	58	0
4	P	3508	0	3664	51	0
5	C	2707	0	2704	32	0
5	D	2707	0	2704	35	0
6	A	2338	0	2411	29	0
6	B	2338	0	2411	23	0
7	G	2809	0	2867	20	0
7	H	2809	0	2867	19	0
8	M	212	0	202	11	0
8	N	212	0	202	9	0
9	E	32	0	12	2	0
9	F	32	0	12	3	0
All	All	44088	0	44822	556	0

The all-atom clashscore is defined as the number of clashes found per 1000 atoms (including hydrogen atoms). The all-atom clashscore for this structure is 6.

All (556) close contacts within the same asymmetric unit are listed below, sorted by their clash magnitude.

Atom-1	Atom-2	Interatomic distance (Å)	Clash overlap (Å)
3:J:563:ARG:HD2	4:P:379:ARG:HE	1.43	0.83
1:E:370:ILE:HG22	1:E:387:ILE:HB	1.61	0.83
1:F:146:LYS:HG2	1:F:440:ASN:HB3	1.61	0.82
4:O:141:LEU:O	4:O:145:MET:HB3	1.79	0.81
3:J:430:VAL:HB	3:J:448:VAL:HG22	1.64	0.80
3:I:499:ALA:HA	3:I:502:MET:HB2	1.62	0.79
4:O:142:MET:HA	4:O:145:MET:HG3	1.67	0.76
1:F:91:ARG:HA	1:F:216:MET:HE1	1.69	0.75
1:F:312:ARG:HH22	9:F:501:GTP:H5''	1.49	0.75

Continued on next page...

Continued from previous page...

Atom-1	Atom-2	Interatomic distance (Å)	Clash overlap (Å)
1:E:91:ARG:HA	1:E:216:MET:HE1	1.67	0.75
1:E:404:ILE:HG22	1:E:421:ILE:HB	1.67	0.74
8:M:17:VAL:HG12	8:M:21:MET:HE1	1.69	0.74
3:I:430:VAL:HB	3:I:448:VAL:HG22	1.70	0.74
1:E:364:ILE:HG12	1:E:381:ILE:HD13	1.71	0.73
2:L:220:THR:HB	2:L:223:MET:HG2	1.71	0.73
3:I:574:LEU:O	3:I:578:ILE:HD12	1.90	0.72
4:O:138:HIS:HB2	4:O:141:LEU:HD13	1.72	0.72
8:N:17:VAL:HA	8:N:20:ILE:HD12	1.71	0.71
4:P:146:LEU:HG	4:P:456:TRP:HB2	1.71	0.71
4:P:261:SER:HB3	4:P:351:ASP:HA	1.73	0.71
3:I:559:GLY:O	3:I:563:ARG:HG3	1.92	0.70
3:J:589:LEU:HD11	4:P:212:GLN:HB3	1.74	0.69
6:A:266:LEU:HG	6:A:268:GLU:H	1.58	0.69
4:O:261:SER:HB3	4:O:351:ASP:HA	1.74	0.69
1:E:415:ILE:HG22	1:E:432:ILE:HB	1.75	0.69
2:K:227:ILE:HG12	2:K:237:MET:HG2	1.75	0.68
2:L:227:ILE:HG12	2:L:237:MET:HG2	1.75	0.67
1:F:63:LEU:HD13	1:F:75:ILE:HG12	1.75	0.67
6:B:229:VAL:HG12	6:B:285:PHE:HB2	1.77	0.66
4:P:138:HIS:HB2	4:P:141:LEU:HD13	1.78	0.66
7:H:499:LEU:HD11	7:H:506:MET:HB3	1.76	0.66
1:E:364:ILE:HA	1:E:381:ILE:HB	1.78	0.66
7:G:499:LEU:HD11	7:G:506:MET:HB3	1.77	0.66
1:E:432:ILE:HD11	1:E:443:ILE:HG21	1.76	0.65
3:J:574:LEU:O	3:J:578:ILE:HD12	1.96	0.65
6:A:229:VAL:HG12	6:A:285:PHE:HB2	1.77	0.65
1:F:191:PRO:HB2	3:I:243:ASP:HB3	1.79	0.65
1:F:375:ILE:HG23	1:F:392:LEU:HD12	1.78	0.65
1:F:404:ILE:HG22	1:F:421:ILE:HB	1.79	0.65
7:G:193:THR:HA	7:G:196:MET:HG3	1.78	0.65
4:P:88:ILE:HD11	4:P:128:ARG:HB2	1.80	0.64
5:C:14:ARG:HH12	5:C:41:LEU:HD23	1.63	0.64
1:E:346:ILE:HB	1:E:349:LYS:HG3	1.80	0.64
7:H:193:THR:HA	7:H:196:MET:HG3	1.78	0.64
5:D:14:ARG:HH12	5:D:41:LEU:HD23	1.62	0.63
6:A:67:SER:HB3	6:A:236:VAL:HG22	1.79	0.63
6:B:266:LEU:HG	6:B:268:GLU:H	1.62	0.63
5:C:155:ALA:HB1	5:C:181:ALA:HB2	1.81	0.63
3:I:608:MET:HE3	3:I:620:LEU:HD12	1.81	0.63
1:E:69:MET:HE1	1:E:73:PRO:HG3	1.80	0.62

Continued on next page...

Continued from previous page...

Atom-1	Atom-2	Interatomic distance (Å)	Clash overlap (Å)
1:E:375:ILE:HG23	1:E:392:LEU:HD12	1.82	0.62
4:O:88:ILE:HD11	4:O:128:ARG:HB2	1.80	0.62
3:I:205:VAL:HG11	3:I:289:MET:HE2	1.80	0.61
5:D:155:ALA:HB1	5:D:181:ALA:HB2	1.81	0.61
4:P:40:ALA:HA	4:P:129:HIS:HB3	1.83	0.61
3:J:205:VAL:HG11	3:J:289:MET:HE2	1.82	0.61
3:J:668:MET:HB3	3:J:706:PHE:HZ	1.65	0.61
4:O:87:LYS:HB3	4:O:89:TYR:HE1	1.65	0.61
4:O:140:ILE:HG23	4:O:152:MET:HE1	1.82	0.61
5:D:50:ARG:HH11	5:D:51:TRP:H	1.49	0.60
8:M:16:ARG:O	8:M:20:ILE:HG12	2.01	0.60
2:K:156:ALA:HB2	2:K:162:ILE:HD11	1.82	0.60
1:F:194:ARG:HH12	3:I:237:GLY:HA2	1.67	0.60
3:I:629:SER:HA	3:I:632:PHE:HD2	1.66	0.60
4:P:42:ILE:HA	4:P:248:ARG:HH21	1.67	0.60
6:A:262:THR:HA	6:A:266:LEU:HD22	1.83	0.60
4:P:127:VAL:HG12	4:P:128:ARG:HG3	1.84	0.60
5:D:172:ARG:H	5:D:172:ARG:HD3	1.67	0.59
5:D:109:LEU:HG	5:D:112:LEU:H	1.66	0.59
8:M:18:PHE:HA	8:M:21:MET:SD	2.42	0.59
7:H:342:VAL:HG13	7:H:402:LEU:HD23	1.85	0.59
3:J:591:GLU:O	3:J:595:VAL:HG23	2.02	0.59
1:F:362:THR:HG23	1:F:379:CYS:HB2	1.84	0.59
5:C:172:ARG:H	5:C:172:ARG:HD3	1.67	0.59
3:I:631:VAL:O	3:I:635:TYR:HB2	2.02	0.59
5:D:50:ARG:NH1	5:D:51:TRP:H	2.01	0.59
3:J:571:CYS:HA	3:J:574:LEU:HD23	1.85	0.59
3:J:629:SER:HA	3:J:632:PHE:HD2	1.68	0.59
5:D:318:PRO:HA	5:D:321:ILE:HD12	1.85	0.59
4:P:194:LEU:HD23	4:P:194:LEU:H	1.67	0.59
7:G:342:VAL:HG13	7:G:402:LEU:HD23	1.85	0.59
4:O:127:VAL:HG12	4:O:128:ARG:HG3	1.85	0.58
1:E:216:MET:HE2	1:E:216:MET:HA	1.85	0.58
3:J:706:PHE:HA	3:J:709:TRP:HB2	1.84	0.58
2:L:223:MET:O	2:L:223:MET:HG3	2.03	0.58
3:J:562:GLN:O	3:J:565:LYS:HG2	2.04	0.58
3:J:441:ILE:HD11	3:J:489:GLY:HA3	1.86	0.58
4:P:87:LYS:HB3	4:P:89:TYR:HE1	1.68	0.58
4:O:142:MET:HB3	4:O:453:LEU:HD13	1.86	0.57
6:A:83:TYR:HE2	6:A:92:ILE:HG13	1.68	0.57
4:O:42:ILE:HA	4:O:248:ARG:HH21	1.69	0.57

Continued on next page...

Continued from previous page...

Atom-1	Atom-2	Interatomic distance (Å)	Clash overlap (Å)
4:P:146:LEU:HD13	4:P:440:LYS:HB3	1.86	0.57
1:F:216:MET:HA	1:F:216:MET:HE2	1.85	0.57
2:K:115:VAL:HG22	2:K:175:VAL:HG12	1.85	0.57
3:I:576:LEU:HD21	4:O:179:ILE:HD13	1.87	0.57
4:O:13:PRO:HA	4:O:17:ARG:HH22	1.67	0.57
2:L:115:VAL:HG22	2:L:175:VAL:HG12	1.86	0.57
6:B:49:LEU:HD12	6:B:76:ILE:HD13	1.85	0.57
4:O:40:ALA:HA	4:O:129:HIS:HB3	1.85	0.57
4:O:194:LEU:HD23	4:O:194:LEU:H	1.69	0.57
2:L:196:GLU:HB2	2:L:272:GLN:HE21	1.70	0.57
1:F:346:ILE:HG23	1:F:364:ILE:HB	1.86	0.57
4:O:43:ASN:HB2	4:O:152:MET:HA	1.87	0.57
1:F:422:LYS:HB2	1:F:439:VAL:HG13	1.86	0.57
2:K:24:VAL:HA	2:K:34:VAL:HG12	1.87	0.57
3:I:238:VAL:HG12	3:I:238:VAL:O	2.05	0.56
3:I:663:MET:HA	3:I:663:MET:HE2	1.86	0.56
4:O:145:MET:SD	4:O:146:LEU:HB2	2.45	0.56
3:J:432:THR:HG22	3:J:433:SER:H	1.70	0.56
3:J:499:ALA:HA	3:J:502:MET:HB2	1.87	0.56
4:P:13:PRO:HA	4:P:17:ARG:HH12	1.69	0.56
5:C:245:LEU:HB2	5:C:316:VAL:HB	1.87	0.56
6:B:262:THR:HA	6:B:266:LEU:HD22	1.88	0.56
3:I:670:PHE:HA	3:I:675:ILE:HD12	1.86	0.56
2:L:188:ALA:HA	2:L:242:LEU:HA	1.87	0.56
4:P:142:MET:H	4:P:142:MET:HE3	1.71	0.56
1:F:55:THR:HB	1:F:59:VAL:HB	1.87	0.56
1:E:114:LEU:HD11	1:E:204:LEU:HD21	1.88	0.56
6:A:49:LEU:HD12	6:A:76:ILE:HD13	1.87	0.56
2:K:72:VAL:HG11	2:K:89:ARG:HB2	1.87	0.56
2:K:188:ALA:HA	2:K:242:LEU:HA	1.87	0.56
2:L:24:VAL:HA	2:L:34:VAL:HG12	1.88	0.55
4:P:141:LEU:O	4:P:145:MET:HG3	2.07	0.55
6:B:83:TYR:HE2	6:B:92:ILE:HG13	1.71	0.55
5:C:318:PRO:HA	5:C:321:ILE:HD12	1.87	0.55
1:F:194:ARG:HD2	3:I:239:GLU:HG2	1.88	0.55
3:I:457:GLU:HA	3:I:460:GLU:HB2	1.87	0.55
5:D:245:LEU:HB2	5:D:316:VAL:HB	1.87	0.55
4:P:161:GLY:HA2	4:P:203:GLN:NE2	2.22	0.55
1:F:19:LEU:HD21	1:F:425:LEU:HD11	1.88	0.54
1:E:170:MET:HE3	1:E:233:VAL:HG21	1.89	0.54
3:I:653:PHE:CG	3:I:663:MET:HE1	2.42	0.54

Continued on next page...

Continued from previous page...

Atom-1	Atom-2	Interatomic distance (Å)	Clash overlap (Å)
2:L:243:GLU:HG2	2:L:246:GLU:CD	2.32	0.54
3:J:701:GLN:HG2	3:J:702:GLN:H	1.72	0.54
1:F:30:VAL:HG21	1:F:35:LEU:HD13	1.90	0.54
6:B:34:LEU:HD12	6:B:45:LEU:HD11	1.90	0.54
3:J:631:VAL:O	3:J:635:TYR:HB2	2.06	0.54
1:E:397:THR:HB	1:E:414:VAL:HG13	1.90	0.54
5:D:31:SER:HB3	5:D:272:PHE:HE1	1.72	0.54
2:L:230:ILE:HD11	2:L:236:VAL:HB	1.90	0.54
2:K:230:ILE:HD11	2:K:236:VAL:HB	1.89	0.53
5:D:304:GLU:HG3	5:D:305:LYS:HG2	1.90	0.53
5:C:31:SER:HB3	5:C:272:PHE:HE1	1.73	0.53
8:N:18:PHE:HA	8:N:21:MET:SD	2.48	0.53
1:E:421:ILE:HG23	1:E:424:CYS:HB2	1.88	0.53
1:E:422:LYS:HB3	1:E:439:VAL:HG22	1.90	0.53
4:O:176:ALA:O	4:O:180:MET:HG3	2.07	0.53
1:F:67:PHE:HD1	1:F:68:LYS:H	1.57	0.53
1:E:31:GLY:HA3	1:E:326:VAL:HG11	1.90	0.53
3:J:608:MET:HE1	3:J:617:TYR:HB2	1.90	0.53
1:E:324:ARG:HG2	1:E:372:ARG:HH22	1.73	0.53
1:E:370:ILE:HD12	1:E:370:ILE:O	2.09	0.53
3:I:605:LEU:HA	3:I:608:MET:HB2	1.91	0.53
2:L:72:VAL:HG11	2:L:89:ARG:HB2	1.89	0.53
1:E:381:ILE:HA	1:E:398:VAL:HG13	1.90	0.53
5:C:304:GLU:HG3	5:C:305:LYS:HG2	1.90	0.53
1:E:24:PRO:HD2	1:E:27:LEU:HD12	1.92	0.52
5:D:109:LEU:HD12	5:D:110:HIS:N	2.24	0.52
1:F:46:VAL:HG13	7:G:198:ILE:HB	1.92	0.52
4:O:36:ILE:HG22	4:O:126:LEU:HD21	1.91	0.52
3:I:712:GLU:O	3:I:715:GLU:HG2	2.09	0.52
4:P:99:PRO:HG3	4:P:234:VAL:HG22	1.90	0.52
2:L:136:TRP:HA	2:L:139:ASP:HB2	1.92	0.52
4:P:42:ILE:HD11	4:P:130:VAL:HG12	1.92	0.52
1:E:68:LYS:H	1:E:68:LYS:HD3	1.75	0.51
2:K:216:LEU:HD13	2:K:227:ILE:HG13	1.91	0.51
2:L:223:MET:SD	2:L:250:VAL:HG11	2.50	0.51
2:K:136:TRP:HA	2:K:139:ASP:HB2	1.92	0.51
3:I:204:ALA:HB3	3:I:214:HIS:HB3	1.91	0.51
1:F:133:ARG:HG3	1:F:310:CYS:HB3	1.92	0.51
1:E:352:VAL:HG12	1:E:370:ILE:HD11	1.91	0.51
1:F:364:ILE:HA	1:F:381:ILE:HB	1.93	0.51
1:F:31:GLY:HA3	1:F:326:VAL:HG11	1.93	0.51

Continued on next page...

Continued from previous page...

Atom-1	Atom-2	Interatomic distance (Å)	Clash overlap (Å)
3:I:163:ARG:HG3	3:I:163:ARG:HH11	1.76	0.51
3:I:670:PHE:HB3	3:I:676:LEU:HD23	1.93	0.51
1:F:24:PRO:HD2	1:F:27:LEU:HD12	1.93	0.51
4:O:36:ILE:HG23	4:O:129:HIS:HB2	1.93	0.51
4:O:91:LEU:HB3	4:O:101:CYS:HB2	1.92	0.51
4:O:142:MET:HE3	4:O:142:MET:H	1.76	0.51
4:P:256:LEU:HD12	4:P:283:ILE:HG12	1.93	0.51
3:J:706:PHE:O	3:J:710:LEU:HD12	2.10	0.51
1:F:30:VAL:HG12	1:F:326:VAL:HG21	1.93	0.51
3:J:682:LEU:O	3:J:686:SER:HB3	2.11	0.51
5:C:337:TYR:O	5:C:340:MET:HB2	2.11	0.51
3:J:204:ALA:HB3	3:J:214:HIS:HB3	1.92	0.51
1:F:114:LEU:HD11	1:F:204:LEU:HD21	1.93	0.50
7:G:202:VAL:HG12	7:G:203:ILE:HG12	1.92	0.50
3:I:563:ARG:HD2	4:O:379:ARG:HE	1.75	0.50
4:P:44:ILE:HG12	4:P:154:ALA:HB3	1.93	0.50
1:F:179:GLU:HG2	3:I:225:ALA:HB1	1.93	0.50
5:D:337:TYR:O	5:D:340:MET:HB2	2.11	0.50
3:J:589:LEU:HD21	4:P:213:GLY:HA3	1.94	0.50
3:I:604:PRO:HG3	3:I:621:LEU:HD13	1.94	0.50
6:B:112:ALA:HA	6:B:137:VAL:HG22	1.94	0.50
2:K:250:VAL:HA	2:K:253:GLN:OE1	2.12	0.50
4:O:381:LEU:HB2	4:O:384:VAL:HG11	1.93	0.50
4:P:36:ILE:HG23	4:P:129:HIS:HB2	1.94	0.50
5:C:50:ARG:CZ	5:C:50:ARG:HA	2.41	0.50
6:A:112:ALA:HA	6:A:137:VAL:HG22	1.94	0.50
3:I:693:LYS:O	3:I:696:GLN:HG3	2.11	0.50
8:N:16:ARG:O	8:N:20:ILE:HG13	2.12	0.50
1:F:146:LYS:HE3	1:F:146:LYS:H	1.77	0.49
4:O:374:SER:HB3	4:O:460:ARG:HE	1.77	0.49
4:O:405:MET:HB3	4:O:444:SER:HB2	1.94	0.49
3:J:673:LEU:HB2	3:J:675:ILE:HG13	1.93	0.49
4:P:145:MET:HB3	4:P:180:MET:HA	1.94	0.49
2:L:243:GLU:HG2	2:L:246:GLU:OE2	2.11	0.49
2:L:250:VAL:HA	2:L:253:GLN:OE1	2.12	0.49
3:J:565:LYS:HB3	3:J:628:TRP:HZ2	1.77	0.49
1:E:346:ILE:HG23	1:E:364:ILE:HB	1.94	0.49
3:J:163:ARG:HG3	3:J:163:ARG:HH11	1.76	0.49
1:E:39:PRO:HB3	1:E:104:LEU:HD23	1.92	0.49
2:K:243:GLU:HG2	2:K:246:GLU:OE1	2.12	0.49
2:L:215:GLY:HA3	2:L:258:ILE:HG13	1.94	0.49

Continued on next page...

Continued from previous page...

Atom-1	Atom-2	Interatomic distance (Å)	Clash overlap (Å)
4:P:139:ASP:HA	4:P:142:MET:SD	2.52	0.49
4:P:142:MET:HB3	4:P:453:LEU:HD13	1.93	0.49
3:I:589:LEU:O	3:I:592:VAL:HB	2.13	0.49
1:E:10:VAL:HB	9:E:501:GTP:C2	2.47	0.49
2:K:169:ASN:HB2	2:K:172:GLU:HG3	1.94	0.49
3:J:693:LYS:O	3:J:696:GLN:HG3	2.12	0.49
1:F:30:VAL:HG22	1:F:319:TYR:HE1	1.77	0.49
1:F:194:ARG:NH1	3:I:237:GLY:HA2	2.27	0.49
4:O:220:PRO:HB2	4:O:222:ILE:HG13	1.95	0.49
4:P:191:LYS:HG2	4:P:227:GLN:HE22	1.77	0.49
6:B:24:VAL:O	6:B:28:ARG:HG3	2.13	0.49
8:N:15:ASN:HA	8:N:18:PHE:HB2	1.95	0.49
6:A:23:ALA:HB2	6:A:64:ALA:HB1	1.95	0.49
1:F:326:VAL:HG13	1:F:330:LEU:HG	1.95	0.48
2:L:169:ASN:HB2	2:L:172:GLU:HG3	1.94	0.48
3:J:497:TRP:HD1	3:J:501:GLY:H	1.61	0.48
4:O:256:LEU:HD12	4:O:283:ILE:HG12	1.95	0.48
4:O:294:ILE:HD12	4:O:358:LEU:HD11	1.95	0.48
4:P:36:ILE:HG22	4:P:126:LEU:HD21	1.96	0.48
5:C:274:LEU:HB3	5:C:340:MET:HE1	1.95	0.48
3:J:665:LYS:HA	3:J:668:MET:HE1	1.94	0.48
2:L:7:ARG:HD3	2:L:12:LYS:HG3	1.96	0.48
5:C:50:ARG:HH11	5:C:51:TRP:H	1.61	0.48
2:K:276:LYS:HE3	2:K:276:LYS:HB3	1.61	0.48
1:F:397:THR:HB	1:F:414:VAL:HG12	1.94	0.48
1:F:360:PRO:HG2	1:F:377:SER:HB3	1.96	0.48
5:D:274:LEU:HB3	5:D:340:MET:HE1	1.95	0.48
3:J:605:LEU:HA	3:J:608:MET:HB2	1.95	0.48
4:P:381:LEU:HB2	4:P:384:VAL:HG11	1.95	0.48
2:K:215:GLY:HA3	2:K:258:ILE:HG13	1.95	0.48
5:C:281:GLU:HB3	5:C:282:GLU:H	1.47	0.48
2:K:7:ARG:HD3	2:K:12:LYS:HG3	1.96	0.48
3:I:64:PRO:HG3	3:I:98:LYS:HB2	1.96	0.48
6:A:267:LYS:HB3	6:A:270:HIS:CE1	2.49	0.48
6:A:305:LEU:HG	7:H:504:LEU:HD22	1.96	0.48
4:P:374:SER:HB3	4:P:460:ARG:HE	1.78	0.48
6:B:267:LYS:HD3	6:B:270:HIS:CE1	2.49	0.48
3:I:479:LYS:O	3:I:479:LYS:HD3	2.14	0.47
2:L:216:LEU:HD13	2:L:227:ILE:HG13	1.95	0.47
3:J:181:MET:HE3	3:J:183:MET:HG2	1.96	0.47
3:I:441:ILE:HD11	3:I:489:GLY:HA3	1.97	0.47

Continued on next page...

Continued from previous page...

Atom-1	Atom-2	Interatomic distance (Å)	Clash overlap (Å)
3:I:575:VAL:HG21	3:I:634:ASN:HD21	1.78	0.47
4:P:440:LYS:HD3	4:P:458:GLN:HG2	1.95	0.47
4:O:139:ASP:HA	4:O:142:MET:SD	2.54	0.47
4:O:208:LEU:HA	4:O:211:VAL:HG22	1.96	0.47
2:L:223:MET:HE1	2:L:246:GLU:HG2	1.96	0.47
2:L:243:GLU:N	2:L:243:GLU:OE2	2.47	0.47
3:I:608:MET:HE1	3:I:617:TYR:HA	1.96	0.47
7:G:320:SER:HA	7:G:345:ILE:HG12	1.96	0.47
8:N:19:ASN:HA	8:N:22:ARG:HB2	1.97	0.47
1:E:55:THR:HB	1:E:59:VAL:HG13	1.95	0.47
3:I:139:ASP:HB2	3:I:257:ALA:HB1	1.96	0.47
4:O:259:ILE:HG22	4:O:260:ARG:HD2	1.97	0.47
5:D:113:LEU:HD21	6:A:103:ARG:HG2	1.96	0.47
8:M:19:ASN:HA	8:M:22:ARG:CD	2.45	0.47
3:J:682:LEU:HA	3:J:685:PHE:CE2	2.50	0.47
3:J:701:GLN:CD	3:J:701:GLN:H	2.23	0.47
6:B:23:ALA:HB2	6:B:64:ALA:HB1	1.95	0.47
1:F:67:PHE:HB3	1:F:69:MET:HE1	1.97	0.47
1:F:320:MET:HE1	1:F:324:ARG:HH22	1.79	0.47
3:J:578:ILE:HD12	3:J:578:ILE:H	1.80	0.47
3:J:589:LEU:O	3:J:592:VAL:HB	2.15	0.47
4:P:145:MET:CE	4:P:146:LEU:HB2	2.45	0.47
3:J:139:ASP:HB2	3:J:257:ALA:HB1	1.97	0.47
4:P:145:MET:HE1	4:P:146:LEU:HB2	1.97	0.47
1:F:346:ILE:HB	1:F:349:LYS:HG3	1.96	0.47
5:D:130:GLN:O	5:D:134:ILE:HG12	2.15	0.46
3:J:64:PRO:HG3	3:J:98:LYS:HB2	1.96	0.46
1:E:362:THR:HG23	1:E:379:CYS:HB2	1.97	0.46
1:E:392:LEU:HB3	1:E:396:VAL:HG11	1.96	0.46
7:H:320:SER:HA	7:H:345:ILE:HG12	1.96	0.46
3:J:502:MET:O	3:J:505:GLU:HB2	2.15	0.46
5:C:130:GLN:O	5:C:134:ILE:HG12	2.15	0.46
3:I:709:TRP:HA	3:I:712:GLU:HB2	1.96	0.46
3:J:607:GLN:HE21	3:J:620:LEU:HD13	1.80	0.46
4:O:197:GLU:HB2	8:M:18:PHE:CE2	2.50	0.46
4:P:81:LEU:HD12	4:P:135:CYS:HB2	1.98	0.46
4:O:27:LYS:HB3	4:O:27:LYS:HE3	1.53	0.46
6:A:28:ARG:HG2	6:A:101:LEU:HD13	1.97	0.46
1:F:366:GLU:HG3	1:F:367:LYS:HG3	1.98	0.46
4:O:68:ARG:HE	4:O:325:HIS:HA	1.81	0.46
4:O:98:ARG:HH21	8:M:4:SER:HB2	1.81	0.46

Continued on next page...

Continued from previous page...

Atom-1	Atom-2	Interatomic distance (Å)	Clash overlap (Å)
4:O:176:ALA:HA	4:O:179:ILE:HG22	1.98	0.46
6:A:271:PRO:HG3	6:B:185:TYR:CE2	2.51	0.46
5:C:11:LEU:HD21	5:C:45:ILE:HA	1.97	0.46
7:G:422:GLN:O	7:G:426:VAL:HG23	2.16	0.46
1:F:305:MET:HE2	1:F:307:GLU:O	2.15	0.46
1:E:366:GLU:HG3	1:E:367:LYS:HG2	1.97	0.46
2:K:223:MET:O	2:K:223:MET:HG2	2.16	0.46
4:O:138:HIS:NE2	4:O:452:ARG:HA	2.31	0.46
5:D:50:ARG:HA	5:D:50:ARG:CZ	2.46	0.46
3:J:563:ARG:HD2	4:P:379:ARG:NE	2.22	0.46
7:H:202:VAL:HG12	7:H:203:ILE:HG13	1.97	0.46
2:L:247:GLY:O	2:L:250:VAL:HG12	2.16	0.46
1:F:307:GLU:OE1	1:F:307:GLU:N	2.49	0.45
3:I:66:VAL:HB	3:I:76:ILE:HB	1.97	0.45
8:N:13:LEU:HD11	4:P:234:VAL:HG11	1.98	0.45
2:L:156:ALA:HB2	2:L:162:ILE:HD11	1.97	0.45
5:C:172:ARG:H	5:C:172:ARG:HH11	1.64	0.45
8:M:12:GLU:HA	8:M:15:ASN:ND2	2.31	0.45
8:N:16:ARG:HH22	4:P:99:PRO:HD2	1.81	0.45
3:J:66:VAL:HB	3:J:76:ILE:HB	1.98	0.45
1:F:393:MET:SD	1:F:410:CYS:HA	2.56	0.45
3:J:194:THR:HG22	3:J:308:ALA:HB1	1.99	0.45
3:I:504:MET:C	3:I:504:MET:HE3	2.41	0.45
3:I:637:LYS:O	3:I:638:ARG:HB2	2.16	0.45
3:I:668:MET:HB3	3:I:706:PHE:HZ	1.82	0.45
1:F:69:MET:N	1:F:69:MET:HE3	2.31	0.45
3:I:96:CYS:HB2	3:I:128:TYR:HB2	1.98	0.45
7:H:268:PRO:HG2	7:H:456:GLU:HG3	1.99	0.45
1:F:68:LYS:HE2	1:F:68:LYS:HB2	1.76	0.45
1:E:326:VAL:N	1:E:327:PRO:HD2	2.32	0.45
3:I:194:THR:HG22	3:I:308:ALA:HB1	1.98	0.45
5:D:11:LEU:HD21	5:D:45:ILE:HA	1.99	0.45
6:A:185:TYR:CE2	6:B:271:PRO:HG3	2.52	0.45
6:A:203:ASN:HB3	6:A:239:PHE:CZ	2.52	0.45
6:A:206:ILE:HG21	6:A:228:VAL:HG11	1.99	0.45
3:J:667:LEU:HD11	3:J:684:TRP:HZ3	1.80	0.45
3:J:707:ILE:HD13	3:J:710:LEU:HD13	1.99	0.45
4:P:47:ILE:HG21	4:P:177:ILE:HD11	1.98	0.45
4:P:294:ILE:HD12	4:P:358:LEU:HD11	1.99	0.45
1:E:78:ILE:HG21	1:E:84:MET:SD	2.57	0.45
1:E:346:ILE:HG12	1:E:364:ILE:HD12	1.98	0.45

Continued on next page...

Continued from previous page...

Atom-1	Atom-2	Interatomic distance (Å)	Clash overlap (Å)
3:I:664:ALA:O	3:I:668:MET:HG3	2.15	0.45
4:O:42:ILE:HD11	4:O:130:VAL:HG12	1.98	0.45
7:H:171:LYS:HA	7:H:171:LYS:HD3	1.69	0.45
7:H:422:GLN:O	7:H:426:VAL:HG23	2.16	0.45
1:F:46:VAL:CG1	7:G:198:ILE:HB	2.46	0.45
3:I:552:VAL:HA	3:I:555:ASN:ND2	2.32	0.45
5:D:330:GLY:HA3	7:H:447:VAL:HG21	1.99	0.45
2:L:251:LEU:O	2:L:255:MET:HG3	2.17	0.45
3:J:604:PRO:HG3	3:J:621:LEU:HD13	1.99	0.45
3:I:703:LEU:HD22	3:I:703:LEU:HA	1.58	0.45
6:A:71:LEU:HD23	6:A:71:LEU:HA	1.83	0.45
8:M:13:LEU:O	8:M:17:VAL:HG23	2.17	0.45
6:A:227:TYR:HB3	6:A:285:PHE:HE2	1.82	0.45
8:M:12:GLU:HA	8:M:15:ASN:HD21	1.82	0.45
3:J:96:CYS:HB2	3:J:128:TYR:HB2	1.98	0.45
3:J:612:LEU:HD12	3:J:658:ALA:HB3	1.98	0.45
6:B:120:LYS:HB3	6:B:120:LYS:HE2	1.84	0.45
1:E:391:LEU:HD12	1:E:408:VAL:HG13	1.98	0.44
2:K:243:GLU:HG2	2:K:246:GLU:CD	2.42	0.44
8:N:1:TRP:CD1	8:N:3:GLY:H	2.36	0.44
4:P:167:GLN:HG3	4:P:168:PRO:HD2	1.97	0.44
6:B:203:ASN:HB3	6:B:239:PHE:CZ	2.52	0.44
2:K:188:ALA:HB2	2:K:242:LEU:HD23	1.99	0.44
6:B:215:MET:HE3	6:B:215:MET:HB2	1.92	0.44
7:G:268:PRO:HG2	7:G:456:GLU:HG3	1.99	0.44
6:A:80:SER:HA	6:A:89:CYS:SG	2.58	0.44
3:J:552:VAL:HA	3:J:555:ASN:HD21	1.82	0.44
3:J:707:ILE:HA	3:J:710:LEU:HD12	1.99	0.44
5:C:330:GLY:HA3	7:G:447:VAL:HG21	1.99	0.44
1:F:85:GLY:H	1:F:88:ASP:HB2	1.82	0.44
1:F:398:VAL:HA	1:F:415:ILE:HB	1.98	0.44
3:I:601:LEU:HD11	3:I:649:ILE:HG12	1.99	0.44
5:D:41:LEU:HD23	5:D:41:LEU:HA	1.86	0.44
6:A:20:MET:HE3	6:A:20:MET:HB2	1.82	0.44
2:L:222:ASN:OD1	2:L:222:ASN:C	2.60	0.44
3:J:552:VAL:HA	3:J:555:ASN:ND2	2.32	0.44
3:J:561:LEU:HD12	3:J:628:TRP:CZ3	2.53	0.44
3:J:622:LEU:O	3:J:626:LYS:HG2	2.18	0.44
3:J:663:MET:HE3	3:J:663:MET:O	2.18	0.44
4:O:87:LYS:HB3	4:O:89:TYR:CE1	2.49	0.44
5:C:242:ASN:HB3	5:C:278:PHE:HE1	1.82	0.44

Continued on next page...

Continued from previous page...

Atom-1	Atom-2	Interatomic distance (Å)	Clash overlap (Å)
6:B:206:ILE:HG21	6:B:228:VAL:HG11	1.99	0.44
6:B:227:TYR:HB3	6:B:285:PHE:HE2	1.83	0.44
1:F:49:GLU:HA	1:F:71:MET:HB2	1.99	0.44
1:E:312:ARG:HH12	9:E:501:GTP:H5'	1.81	0.44
3:J:667:LEU:HD23	3:J:667:LEU:HA	1.79	0.44
4:O:53:GLY:HA3	4:O:190:ASN:HD22	1.82	0.44
5:D:172:ARG:H	5:D:172:ARG:HH11	1.64	0.44
1:F:421:ILE:HG21	1:F:426:ILE:HD11	2.00	0.44
5:D:242:ASN:HB3	5:D:278:PHE:HE1	1.82	0.44
6:A:120:LYS:HB3	6:A:120:LYS:HE2	1.83	0.44
7:G:335:VAL:HG11	7:G:346:LEU:HD11	2.00	0.44
4:O:17:ARG:HA	4:O:17:ARG:HD3	1.64	0.44
4:O:224:ILE:HD12	4:O:224:ILE:C	2.43	0.44
5:D:109:LEU:HD12	5:D:110:HIS:H	1.82	0.44
7:H:326:LYS:HA	7:H:326:LYS:HD3	1.77	0.44
3:J:667:LEU:HB3	3:J:706:PHE:HE2	1.83	0.44
2:K:223:MET:HE1	2:K:246:GLU:HG2	2.00	0.43
2:K:237:MET:HE1	2:K:255:MET:HG2	1.98	0.43
3:I:681:ILE:HD12	3:I:681:ILE:HA	1.82	0.43
4:P:27:LYS:HE3	4:P:27:LYS:HB3	1.54	0.43
4:O:310:MET:HA	4:O:465:ILE:HD11	2.00	0.43
5:D:274:LEU:HD23	5:D:340:MET:HE2	2.00	0.43
4:P:138:HIS:NE2	4:P:452:ARG:HA	2.33	0.43
7:G:207:MET:HE3	7:G:260:MET:HE1	2.00	0.43
2:K:222:ASN:C	2:K:222:ASN:OD1	2.61	0.43
7:H:207:MET:HE3	7:H:260:MET:HE1	2.00	0.43
6:B:251:LYS:HA	6:B:273:VAL:HG22	2.01	0.43
1:F:275:LEU:HD22	7:G:231:ARG:HG3	2.00	0.43
1:F:417:LYS:HB3	1:F:417:LYS:HE3	1.72	0.43
3:I:618:CYS:SG	3:I:665:LYS:HB3	2.58	0.43
6:A:215:MET:HE3	6:A:215:MET:HB2	1.90	0.43
4:O:220:PRO:C	4:O:221:ILE:HD13	2.43	0.43
5:D:45:ILE:HD13	5:D:64:GLU:HG3	2.01	0.43
3:J:173:LYS:HB3	3:J:173:LYS:HE2	1.72	0.43
3:J:613:ASP:HB3	3:J:616:ARG:HB3	2.00	0.43
3:J:637:LYS:O	3:J:638:ARG:HB2	2.17	0.43
4:P:310:MET:HA	4:P:465:ILE:HD11	2.01	0.43
8:M:16:ARG:HE	8:M:20:ILE:HD11	1.84	0.43
3:I:600:VAL:HG13	3:I:624:LEU:HD21	1.99	0.43
6:B:80:SER:HA	6:B:89:CYS:SG	2.59	0.43
5:D:239:ILE:HD11	5:D:269:ALA:HB3	2.01	0.43

Continued on next page...

Continued from previous page...

Atom-1	Atom-2	Interatomic distance (Å)	Clash overlap (Å)
4:P:87:LYS:HB3	4:P:89:TYR:CE1	2.49	0.43
5:C:109:LEU:HD23	5:C:111:LYS:N	2.34	0.43
5:C:274:LEU:HD23	5:C:340:MET:HE2	2.00	0.43
6:A:251:LYS:HA	6:A:273:VAL:HG22	2.01	0.43
5:C:45:ILE:HD13	5:C:64:GLU:HG3	2.01	0.43
1:E:46:VAL:CG1	7:H:198:ILE:HB	2.48	0.43
3:I:637:LYS:O	3:I:637:LYS:HG2	2.19	0.43
4:O:223:PRO:HD2	8:M:13:LEU:HB3	2.01	0.43
7:H:335:VAL:HG11	7:H:346:LEU:HD11	2.00	0.43
3:J:503:ASN:O	3:J:504:MET:HE2	2.19	0.43
1:E:90:LEU:HD23	1:E:90:LEU:HA	1.88	0.42
7:H:423:LEU:HD23	7:H:423:LEU:HA	1.90	0.42
3:J:597:SER:HA	3:J:600:VAL:HG22	2.00	0.42
4:O:204:TYR:HE1	4:O:221:ILE:HG13	1.85	0.42
4:P:259:ILE:HG22	4:P:260:ARG:HD2	2.01	0.42
1:E:307:GLU:N	1:E:307:GLU:OE1	2.52	0.42
3:I:552:VAL:HA	3:I:555:ASN:HD21	1.84	0.42
4:O:189:GLN:NE2	4:O:203:GLN:HG2	2.34	0.42
6:A:77:SER:O	6:A:81:LEU:HD13	2.19	0.42
3:J:547:MET:HE2	3:J:547:MET:HA	2.01	0.42
5:C:84:ARG:HG2	5:C:344:TYR:CE1	2.55	0.42
3:I:55:ARG:HB2	3:I:65:ARG:NH2	2.35	0.42
3:I:578:ILE:HD12	3:I:578:ILE:H	1.84	0.42
5:D:270:PRO:HD2	5:D:273:LYS:HD2	2.01	0.42
2:L:189:VAL:HG21	2:L:244:ARG:HB3	2.01	0.42
3:J:590:LYS:HB2	3:J:590:LYS:HE2	1.77	0.42
3:J:712:GLU:O	3:J:715:GLU:HG3	2.19	0.42
7:G:326:LYS:HD3	7:G:326:LYS:HA	1.77	0.42
4:O:44:ILE:HG12	4:O:154:ALA:HB3	2.00	0.42
4:O:175:ALA:HB1	4:O:382:LEU:HB3	2.02	0.42
2:L:163:LEU:HD21	2:L:168:LEU:HD12	2.01	0.42
3:J:497:TRP:CD1	3:J:501:GLY:H	2.36	0.42
1:E:417:LYS:HB2	1:E:417:LYS:HE2	1.85	0.42
5:D:302:ILE:HD12	5:D:302:ILE:HA	1.83	0.42
6:A:108:ARG:HE	6:A:136:ARG:NH2	2.18	0.42
3:J:168:HIS:NE2	3:J:172:ARG:HD2	2.35	0.42
4:P:53:GLY:HA3	4:P:190:ASN:ND2	2.34	0.42
1:F:421:ILE:HG23	1:F:424:CYS:HB2	2.00	0.42
1:E:26:PRO:HG3	1:E:106:CYS:SG	2.59	0.42
2:K:223:MET:HB2	2:K:241:THR:HG22	2.01	0.42
3:I:561:LEU:HD12	3:I:628:TRP:CZ3	2.55	0.42

Continued on next page...

Continued from previous page...

Atom-1	Atom-2	Interatomic distance (Å)	Clash overlap (Å)
2:L:237:MET:HE1	2:L:255:MET:HG2	2.01	0.42
3:J:229:SER:O	3:J:232:GLN:HG2	2.19	0.42
5:C:46:ILE:HG12	5:C:57:LEU:HD11	2.01	0.42
1:F:312:ARG:NH2	9:F:501:GTP:H5''	2.26	0.42
3:I:316:ARG:NH1	3:I:322:THR:HG21	2.34	0.42
3:I:587:ILE:HG22	3:I:592:VAL:HG23	2.01	0.42
4:O:142:MET:H	4:O:142:MET:CE	2.32	0.42
7:H:319:ILE:HG22	7:H:345:ILE:HD11	2.02	0.42
3:J:604:PRO:HA	3:J:607:GLN:HE22	1.85	0.42
4:P:142:MET:H	4:P:142:MET:CE	2.31	0.42
5:C:144:LEU:O	5:C:147:THR:HG22	2.20	0.42
1:F:15:ARG:HD2	1:F:315:THR:HG22	2.01	0.42
5:D:245:LEU:HD11	5:D:267:VAL:HG21	2.01	0.42
3:J:282:ILE:HD13	3:J:282:ILE:HA	1.84	0.42
3:J:569:ILE:HG22	3:J:574:LEU:HD22	2.02	0.42
1:E:70:LYS:HD2	1:E:70:LYS:C	2.44	0.42
1:E:170:MET:HE2	1:E:170:MET:HB2	1.91	0.42
2:K:247:GLY:O	2:K:250:VAL:HG12	2.19	0.42
3:I:565:LYS:HB2	3:I:628:TRP:HZ2	1.85	0.42
1:F:328:LYS:HB2	1:F:328:LYS:HE2	1.74	0.41
9:F:501:GTP:H3'	9:F:501:GTP:O3A	2.20	0.41
3:I:136:ARG:HG2	3:I:261:THR:HA	2.02	0.41
4:O:406:VAL:HG13	4:O:441:ILE:HD12	2.02	0.41
5:D:84:ARG:HG2	5:D:344:TYR:CE1	2.55	0.41
5:D:281:GLU:HB3	5:D:282:GLU:H	1.47	0.41
3:J:316:ARG:NH1	3:J:322:THR:HG21	2.34	0.41
3:J:499:ALA:HA	3:J:502:MET:CB	2.49	0.41
4:P:91:LEU:HB3	4:P:101:CYS:HB2	2.02	0.41
1:F:57:ARG:NE	1:F:57:ARG:HA	2.35	0.41
4:O:280:GLY:HA2	4:O:338:GLY:HA2	2.02	0.41
5:C:302:ILE:HA	5:C:302:ILE:HD12	1.83	0.41
1:F:72:LYS:HD2	1:F:72:LYS:HA	1.80	0.41
3:I:678:GLU:HG3	3:I:682:LEU:HD12	2.02	0.41
4:O:81:LEU:HD12	4:O:135:CYS:HB2	2.01	0.41
4:O:205:GLU:O	4:O:208:LEU:HG	2.20	0.41
3:J:59:ILE:HD11	3:J:430:VAL:HG11	2.03	0.41
5:C:239:ILE:HD11	5:C:269:ALA:HB3	2.01	0.41
1:F:26:PRO:HG3	1:F:106:CYS:SG	2.60	0.41
1:F:305:MET:HG3	1:F:305:MET:O	2.20	0.41
5:D:144:LEU:O	5:D:147:THR:HG22	2.21	0.41
8:N:13:LEU:HD13	4:P:222:ILE:HG23	2.02	0.41

Continued on next page...

Continued from previous page...

Atom-1	Atom-2	Interatomic distance (Å)	Clash overlap (Å)
5:C:109:LEU:CD2	5:C:112:LEU:H	2.33	0.41
1:F:130:MET:HG2	1:F:205:TYR:HD1	1.85	0.41
1:E:23:ILE:HD11	1:E:393:MET:HE3	2.03	0.41
2:K:30:MET:HB2	2:K:30:MET:HE2	1.84	0.41
5:D:46:ILE:HG12	5:D:57:LEU:HD11	2.02	0.41
3:J:446:GLY:O	3:J:502:MET:HE2	2.20	0.41
6:B:108:ARG:HE	6:B:136:ARG:NH2	2.18	0.41
7:G:319:ILE:HG22	7:G:345:ILE:HD11	2.02	0.41
2:K:2:PRO:HB2	2:K:3:GLY:H	1.62	0.41
3:I:168:HIS:NE2	3:I:172:ARG:HD2	2.35	0.41
3:I:557:VAL:O	3:I:561:LEU:HD23	2.21	0.41
4:O:53:GLY:HA3	4:O:190:ASN:ND2	2.35	0.41
4:P:199:GLN:HA	4:P:202:GLU:HG2	2.03	0.41
5:C:270:PRO:HD2	5:C:273:LYS:HD2	2.02	0.41
7:G:171:LYS:HA	7:G:171:LYS:HD3	1.64	0.41
2:K:251:LEU:O	2:K:255:MET:HG3	2.21	0.41
3:I:598:HIS:O	3:I:602:GLU:HG3	2.21	0.41
4:P:68:ARG:HG2	4:P:69:PHE:CZ	2.56	0.41
4:P:121:LYS:HD3	4:P:121:LYS:HA	1.86	0.41
7:G:212:LEU:HD12	7:G:212:LEU:HA	1.84	0.41
1:E:143:PRO:HA	1:E:423:ASP:HB3	2.02	0.41
2:K:191:ILE:HG22	2:K:251:LEU:HD12	2.01	0.41
4:O:146:LEU:HB3	4:O:440:LYS:HB3	2.03	0.41
5:D:223:PHE:CD1	7:G:425:LEU:HD22	2.56	0.41
7:H:413:SER:HB3	7:H:491:VAL:HG13	2.02	0.41
2:L:203:GLU:HB3	2:L:207:ALA:HB2	2.02	0.41
6:B:67:SER:HB3	6:B:236:VAL:HB	2.03	0.41
7:G:201:SER:O	7:G:202:VAL:HB	2.20	0.41
6:A:12:SER:O	6:A:16:GLU:HG2	2.21	0.41
6:A:49:LEU:HD23	6:A:49:LEU:HA	1.88	0.41
6:A:90:LYS:HA	6:A:93:MET:HE3	2.01	0.41
1:E:148:LYS:HD3	1:E:148:LYS:HA	1.91	0.40
1:E:203:HIS:CG	1:E:312:ARG:HH21	2.39	0.40
2:K:189:VAL:HG21	2:K:244:ARG:HB3	2.03	0.40
2:K:251:LEU:HD23	2:K:251:LEU:HA	1.86	0.40
4:O:184:HIS:CD2	4:O:244:PRO:HD2	2.57	0.40
5:D:39:LEU:HD23	5:D:39:LEU:HA	1.94	0.40
6:A:60:ASP:HB3	6:A:65:VAL:HG21	2.03	0.40
3:J:457:GLU:HA	3:J:460:GLU:HB2	2.01	0.40
3:J:557:VAL:O	3:J:561:LEU:HD23	2.20	0.40
5:C:245:LEU:HD11	5:C:267:VAL:HG21	2.01	0.40

Continued on next page...

Continued from previous page...

Atom-1	Atom-2	Interatomic distance (Å)	Clash overlap (Å)
7:G:192:LEU:HD12	7:G:192:LEU:HA	1.90	0.40
1:F:320:MET:HE1	1:F:324:ARG:NH2	2.36	0.40
1:E:320:MET:HE3	1:E:324:ARG:HB2	2.04	0.40
7:H:204:HIS:CG	7:H:236:VAL:HG22	2.56	0.40
7:H:425:LEU:HD22	5:C:223:PHE:CD1	2.56	0.40
5:C:39:LEU:HD23	5:C:39:LEU:HA	1.94	0.40
5:C:155:ALA:HA	5:C:177:PHE:CZ	2.56	0.40
6:B:34:LEU:HD21	6:B:93:MET:HB3	2.03	0.40
5:D:155:ALA:HA	5:D:177:PHE:CZ	2.56	0.40
3:J:136:ARG:HG2	3:J:261:THR:HA	2.03	0.40
5:C:113:LEU:HD21	6:B:103:ARG:HG2	2.02	0.40
1:F:10:VAL:HG22	1:F:78:ILE:HD11	2.03	0.40
4:O:31:LEU:HD23	4:O:31:LEU:HA	1.94	0.40
3:J:314:ILE:HD13	3:J:314:ILE:HA	1.88	0.40

There are no symmetry-related clashes.

5.3 Torsion angles [i](#)

5.3.1 Protein backbone [i](#)

In the following table, the Percentiles column shows the percent Ramachandran outliers of the chain as a percentile score with respect to all PDB entries followed by that with respect to all EM entries.

The Analysed column shows the number of residues for which the backbone conformation was analysed, and the total number of residues.

Mol	Chain	Analysed	Favoured	Allowed	Outliers	Percentiles	
1	E	410/452 (91%)	389 (95%)	21 (5%)	0	100	100
1	F	410/452 (91%)	395 (96%)	15 (4%)	0	100	100
2	K	276/315 (88%)	268 (97%)	8 (3%)	0	100	100
2	L	276/315 (88%)	271 (98%)	5 (2%)	0	100	100
3	I	622/721 (86%)	601 (97%)	20 (3%)	1 (0%)	44	68
3	J	622/721 (86%)	598 (96%)	23 (4%)	1 (0%)	44	68
4	O	458/472 (97%)	434 (95%)	23 (5%)	1 (0%)	44	68
4	P	458/472 (97%)	436 (95%)	21 (5%)	1 (0%)	44	68
5	C	344/351 (98%)	334 (97%)	9 (3%)	1 (0%)	37	61

Continued on next page...

Continued from previous page...

Mol	Chain	Analysed	Favoured	Allowed	Outliers	Percentiles	
5	D	344/351 (98%)	331 (96%)	12 (4%)	1 (0%)	37	61
6	A	297/305 (97%)	289 (97%)	8 (3%)	0	100	100
6	B	297/305 (97%)	289 (97%)	8 (3%)	0	100	100
7	G	358/523 (68%)	351 (98%)	7 (2%)	0	100	100
7	H	358/523 (68%)	352 (98%)	6 (2%)	0	100	100
8	M	22/333 (7%)	22 (100%)	0	0	100	100
8	N	22/333 (7%)	22 (100%)	0	0	100	100
All	All	5574/6944 (80%)	5382 (97%)	186 (3%)	6 (0%)	50	73

All (6) Ramachandran outliers are listed below:

Mol	Chain	Res	Type
3	I	638	ARG
5	D	281	GLU
3	J	638	ARG
5	C	281	GLU
4	O	67	VAL
4	P	67	VAL

5.3.2 Protein sidechains [i](#)

In the following table, the Percentiles column shows the percent sidechain outliers of the chain as a percentile score with respect to all PDB entries followed by that with respect to all EM entries.

The Analysed column shows the number of residues for which the sidechain conformation was analysed, and the total number of residues.

Mol	Chain	Analysed	Rotameric	Outliers	Percentiles	
1	E	365/398 (92%)	356 (98%)	9 (2%)	42	72
1	F	365/398 (92%)	353 (97%)	12 (3%)	33	62
2	K	249/280 (89%)	247 (99%)	2 (1%)	79	91
2	L	249/280 (89%)	247 (99%)	2 (1%)	79	91
3	I	557/626 (89%)	543 (98%)	14 (2%)	42	72
3	J	557/626 (89%)	547 (98%)	10 (2%)	54	80
4	O	390/397 (98%)	381 (98%)	9 (2%)	45	74
4	P	390/397 (98%)	383 (98%)	7 (2%)	54	80

Continued on next page...

Continued from previous page...

Mol	Chain	Analysed	Rotameric	Outliers	Percentiles	
5	C	295/298 (99%)	289 (98%)	6 (2%)	50	78
5	D	295/298 (99%)	288 (98%)	7 (2%)	44	73
6	A	257/260 (99%)	249 (97%)	8 (3%)	35	64
6	B	257/260 (99%)	253 (98%)	4 (2%)	58	82
7	G	316/444 (71%)	311 (98%)	5 (2%)	58	82
7	H	316/444 (71%)	311 (98%)	5 (2%)	58	82
8	M	22/304 (7%)	21 (96%)	1 (4%)	23	50
8	N	22/304 (7%)	19 (86%)	3 (14%)	3	7
All	All	4902/6014 (82%)	4798 (98%)	104 (2%)	49	76

All (104) residues with a non-rotameric sidechain are listed below:

Mol	Chain	Res	Type
1	F	10	VAL
1	F	46	VAL
1	F	58	ASP
1	F	71	MET
1	F	78	ILE
1	F	139	ILE
1	F	146	LYS
1	F	306	LYS
1	F	326	VAL
1	F	352	VAL
1	F	398	VAL
1	F	414	VAL
1	E	10	VAL
1	E	30	VAL
1	E	46	VAL
1	E	55	THR
1	E	59	VAL
1	E	67	PHE
1	E	78	ILE
1	E	326	VAL
1	E	398	VAL
2	K	64	ARG
2	K	76	VAL
3	I	95	CYS
3	I	119	VAL
3	I	124	THR

Continued on next page...

Continued from previous page...

Mol	Chain	Res	Type
3	I	180	VAL
3	I	203	VAL
3	I	283	LEU
3	I	292	THR
3	I	318	VAL
3	I	324	GLU
3	I	330	SER
3	I	357	GLU
3	I	496	LEU
3	I	703	LEU
3	I	707	ILE
4	O	115	THR
4	O	169	GLN
4	O	217	GLU
4	O	269	CYS
4	O	353	MET
4	O	386	THR
4	O	389	ASP
4	O	391	LYS
4	O	413	THR
5	D	84	ARG
5	D	107	GLU
5	D	110	HIS
5	D	114	THR
5	D	166	MET
5	D	172	ARG
5	D	340	MET
6	A	41	THR
6	A	63	VAL
6	A	95	GLU
6	A	169	CYS
6	A	175	VAL
6	A	202	GLU
6	A	236	VAL
6	A	264	GLN
7	H	249	SER
7	H	260	MET
7	H	470	HIS
7	H	514	VAL
7	H	518	VAL
8	M	13	LEU
8	N	9	THR

Continued on next page...

Continued from previous page...

Mol	Chain	Res	Type
8	N	14	LEU
8	N	18	PHE
2	L	71	VAL
2	L	76	VAL
3	J	95	CYS
3	J	124	THR
3	J	180	VAL
3	J	203	VAL
3	J	238	VAL
3	J	283	LEU
3	J	292	THR
3	J	318	VAL
3	J	324	GLU
3	J	357	GLU
4	P	115	THR
4	P	157	LEU
4	P	169	GLN
4	P	203	GLN
4	P	234	VAL
4	P	269	CYS
4	P	413	THR
5	C	37	GLU
5	C	110	HIS
5	C	114	THR
5	C	118	LEU
5	C	172	ARG
5	C	340	MET
6	B	63	VAL
6	B	95	GLU
6	B	175	VAL
6	B	305	LEU
7	G	249	SER
7	G	260	MET
7	G	395	LEU
7	G	470	HIS
7	G	514	VAL

Sometimes sidechains can be flipped to improve hydrogen bonding and reduce clashes. All (52) such sidechains are listed below:

Mol	Chain	Res	Type
1	F	218	ASN
1	F	274	ASN

Continued on next page...

Continued from previous page...

Mol	Chain	Res	Type
1	F	412	ASN
1	E	154	GLN
1	E	172	ASN
1	E	218	ASN
1	E	274	ASN
1	E	412	ASN
2	K	114	HIS
2	K	178	ASN
2	K	181	ASN
2	K	228	ASN
3	I	232	GLN
3	I	285	ASN
3	I	384	HIS
3	I	568	ASN
3	I	598	HIS
3	I	634	ASN
3	I	704	GLN
4	O	33	HIS
4	O	49	HIS
4	O	71	ASN
4	O	76	ASN
4	O	169	GLN
4	O	189	GLN
4	O	407	ASN
4	O	431	ASN
5	D	230	ASN
6	A	214	GLN
7	H	185	GLN
7	H	371	HIS
2	L	23	ASN
2	L	114	HIS
2	L	178	ASN
2	L	228	ASN
2	L	272	GLN
3	J	232	GLN
3	J	285	ASN
3	J	384	HIS
3	J	568	ASN
3	J	606	GLN
3	J	607	GLN
3	J	634	ASN
4	P	49	HIS

Continued on next page...

Continued from previous page...

Mol	Chain	Res	Type
4	P	71	ASN
4	P	76	ASN
4	P	169	GLN
4	P	227	GLN
4	P	431	ASN
6	B	214	GLN
7	G	185	GLN
7	G	371	HIS

5.3.3 RNA [i](#)

There are no RNA molecules in this entry.

5.4 Non-standard residues in protein, DNA, RNA chains [i](#)

There are no non-standard protein/DNA/RNA residues in this entry.

5.5 Carbohydrates [i](#)

There are no oligosaccharides in this entry.

5.6 Ligand geometry [i](#)

2 ligands are modelled in this entry.

In the following table, the Counts columns list the number of bonds (or angles) for which Mogul statistics could be retrieved, the number of bonds (or angles) that are observed in the model and the number of bonds (or angles) that are defined in the Chemical Component Dictionary. The Link column lists molecule types, if any, to which the group is linked. The Z score for a bond length (or angle) is the number of standard deviations the observed value is removed from the expected value. A bond length (or angle) with $|Z| > 2$ is considered an outlier worth inspection. RMSZ is the root-mean-square of all Z scores of the bond lengths (or angles).

Mol	Type	Chain	Res	Link	Bond lengths			Bond angles		
					Counts	RMSZ	# Z > 2	Counts	RMSZ	# Z > 2
9	GTP	E	501	-	26,34,34	1.15	2 (7%)	32,54,54	1.51	8 (25%)
9	GTP	F	501	-	26,34,34	1.14	2 (7%)	32,54,54	1.53	7 (21%)

In the following table, the Chirals column lists the number of chiral outliers, the number of chiral centers analysed, the number of these observed in the model and the number defined in the

Chemical Component Dictionary. Similar counts are reported in the Torsion and Rings columns. '-' means no outliers of that kind were identified.

Mol	Type	Chain	Res	Link	Chirals	Torsions	Rings
9	GTP	E	501	-	-	5/18/38/38	0/3/3/3
9	GTP	F	501	-	-	6/18/38/38	0/3/3/3

All (4) bond length outliers are listed below:

Mol	Chain	Res	Type	Atoms	Z	Observed(Å)	Ideal(Å)
9	E	501	GTP	C5-C6	-4.09	1.39	1.47
9	F	501	GTP	C5-C6	-4.05	1.39	1.47
9	F	501	GTP	C2-N3	2.11	1.38	1.33
9	E	501	GTP	C2-N3	2.03	1.38	1.33

All (15) bond angle outliers are listed below:

Mol	Chain	Res	Type	Atoms	Z	Observed(°)	Ideal(°)
9	F	501	GTP	PB-O3B-PG	-3.76	119.91	132.83
9	F	501	GTP	C5-C6-N1	3.25	119.70	113.95
9	E	501	GTP	C5-C6-N1	3.15	119.52	113.95
9	E	501	GTP	C8-N7-C5	2.97	108.65	102.99
9	E	501	GTP	PB-O3B-PG	-2.97	122.64	132.83
9	F	501	GTP	C8-N7-C5	2.95	108.62	102.99
9	E	501	GTP	C3'-C2'-C1'	2.94	105.40	100.98
9	F	501	GTP	C2-N1-C6	-2.88	119.79	125.10
9	F	501	GTP	C3'-C2'-C1'	2.81	105.20	100.98
9	E	501	GTP	C2-N1-C6	-2.71	120.11	125.10
9	E	501	GTP	PA-O3A-PB	-2.64	123.76	132.83
9	F	501	GTP	PA-O3A-PB	-2.16	125.42	132.83
9	E	501	GTP	O3G-PG-O3B	2.06	111.54	104.64
9	F	501	GTP	O6-C6-C5	-2.06	120.35	124.37
9	E	501	GTP	O6-C6-C5	-2.03	120.41	124.37

There are no chirality outliers.

All (11) torsion outliers are listed below:

Mol	Chain	Res	Type	Atoms
9	F	501	GTP	C5'-O5'-PA-O1A
9	E	501	GTP	PB-O3B-PG-O3G
9	E	501	GTP	O4'-C4'-C5'-O5'
9	E	501	GTP	C3'-C4'-C5'-O5'
9	F	501	GTP	C5'-O5'-PA-O3A

Continued on next page...

Continued from previous page...

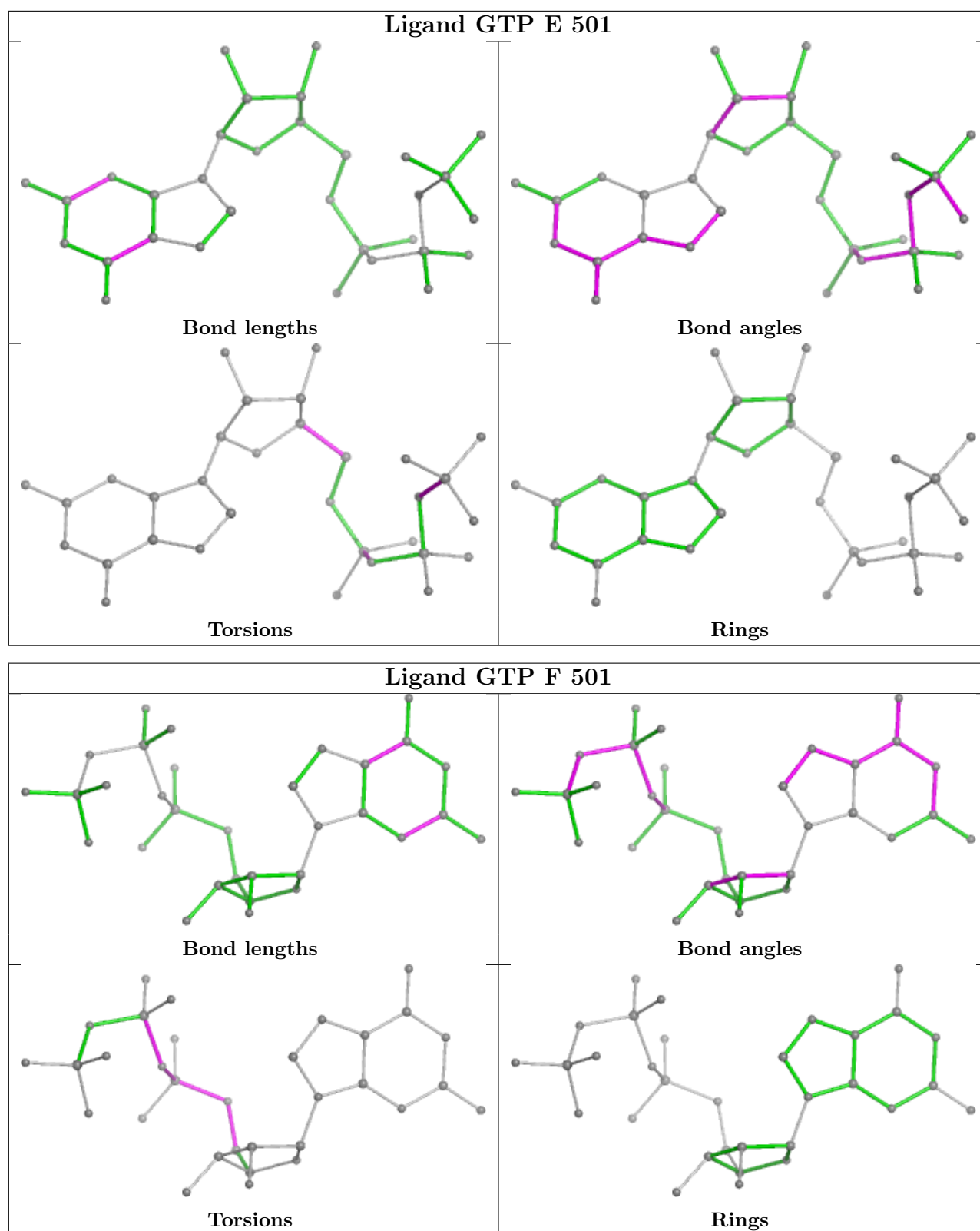
Mol	Chain	Res	Type	Atoms
9	F	501	GTP	C5'-O5'-PA-O2A
9	F	501	GTP	C4'-C5'-O5'-PA
9	F	501	GTP	PB-O3A-PA-O2A
9	E	501	GTP	PB-O3B-PG-O2G
9	F	501	GTP	PA-O3A-PB-O2B
9	E	501	GTP	PB-O3A-PA-O2A

There are no ring outliers.

2 monomers are involved in 5 short contacts:

Mol	Chain	Res	Type	Clashes	Symm-Clashes
9	E	501	GTP	2	0
9	F	501	GTP	3	0

The following is a two-dimensional graphical depiction of Mogul quality analysis of bond lengths, bond angles, torsion angles, and ring geometry for all instances of the Ligand of Interest. In addition, ligands with molecular weight > 250 and outliers as shown on the validation Tables will also be included. For torsion angles, if less than 5% of the Mogul distribution of torsion angles is within 10 degrees of the torsion angle in question, then that torsion angle is considered an outlier. Any bond that is central to one or more torsion angles identified as an outlier by Mogul will be highlighted in the graph. For rings, the root-mean-square deviation (RMSD) between the ring in question and similar rings identified by Mogul is calculated over all ring torsion angles. If the average RMSD is greater than 60 degrees and the minimal RMSD between the ring in question and any Mogul-identified rings is also greater than 60 degrees, then that ring is considered an outlier. The outliers are highlighted in purple. The color gray indicates Mogul did not find sufficient equivalents in the CSD to analyse the geometry.



5.7 Other polymers [\(i\)](#)

There are no such residues in this entry.

5.8 Polymer linkage issues

There are no chain breaks in this entry.

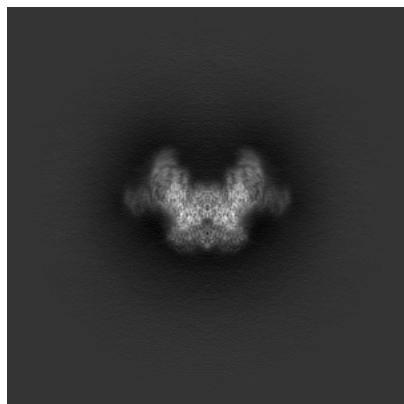
6 Map visualisation [i](#)

This section contains visualisations of the EMDB entry EMD-52433. These allow visual inspection of the internal detail of the map and identification of artifacts.

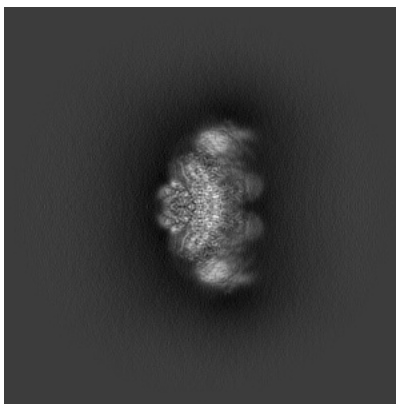
Images derived from a raw map, generated by summing the deposited half-maps, are presented below the corresponding image components of the primary map to allow further visual inspection and comparison with those of the primary map.

6.1 Orthogonal projections [i](#)

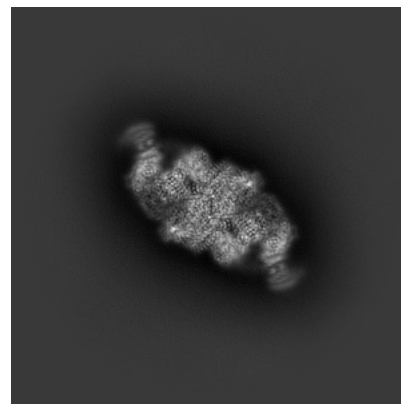
6.1.1 Primary map



X

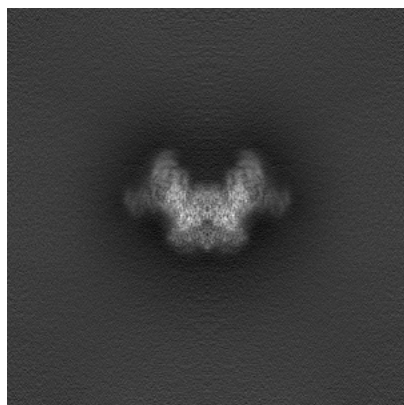


Y

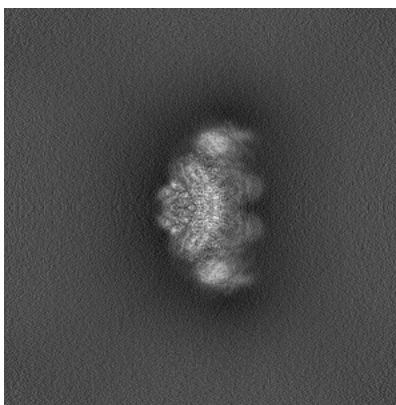


Z

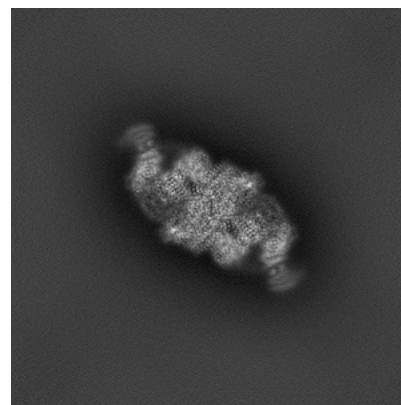
6.1.2 Raw map



X



Y

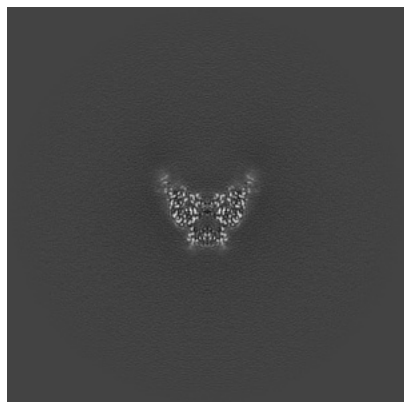


Z

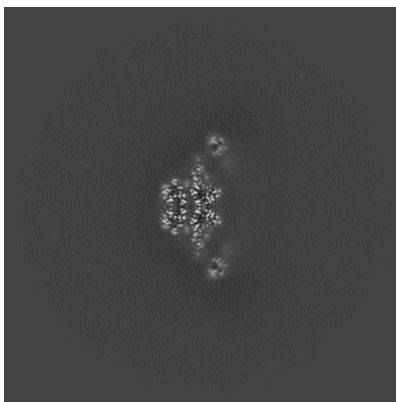
The images above show the map projected in three orthogonal directions.

6.2 Central slices [i](#)

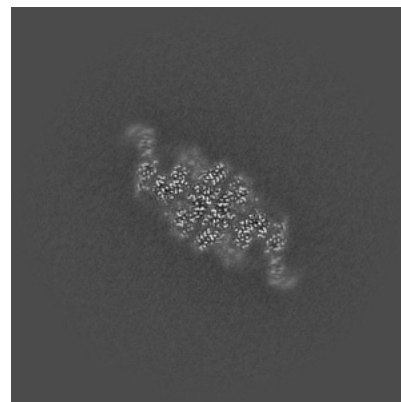
6.2.1 Primary map



X Index: 300

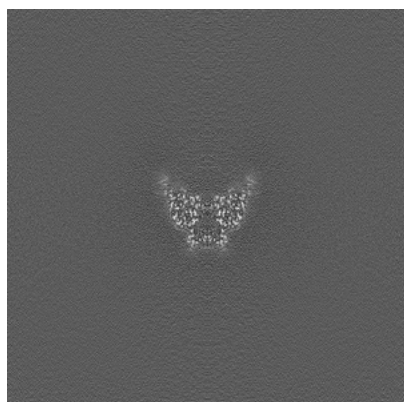


Y Index: 300

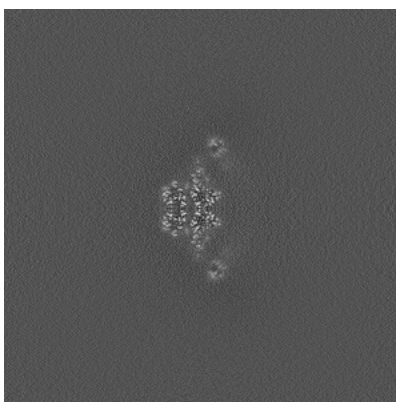


Z Index: 300

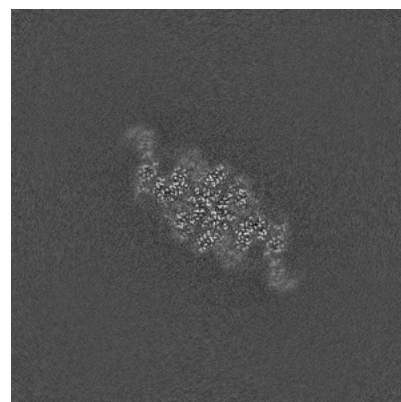
6.2.2 Raw map



X Index: 300



Y Index: 300

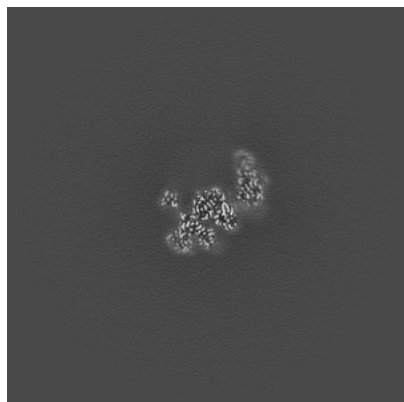


Z Index: 300

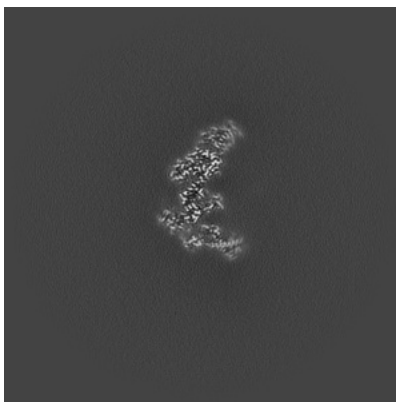
The images above show central slices of the map in three orthogonal directions.

6.3 Largest variance slices [i](#)

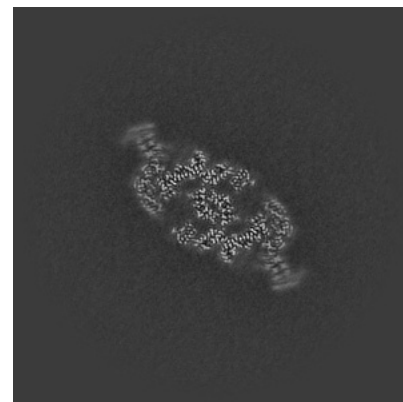
6.3.1 Primary map



X Index: 280

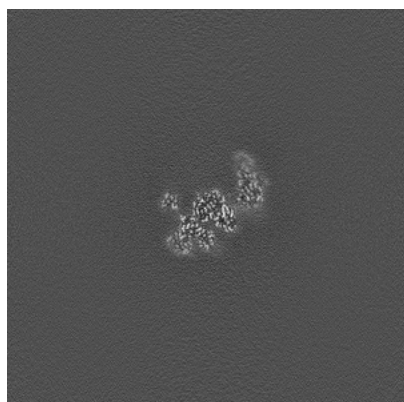


Y Index: 267

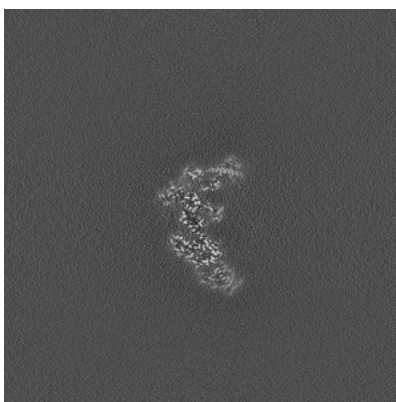


Z Index: 315

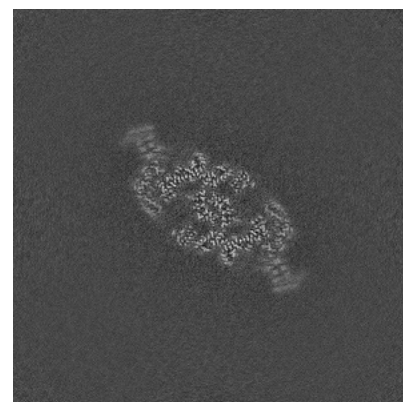
6.3.2 Raw map



X Index: 280



Y Index: 333

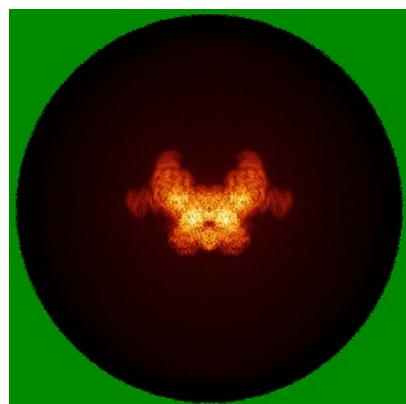


Z Index: 315

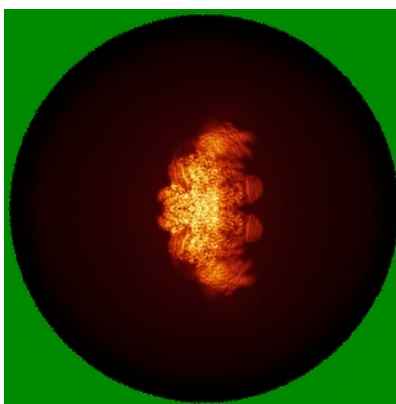
The images above show the largest variance slices of the map in three orthogonal directions.

6.4 Orthogonal standard-deviation projections (False-color) [i](#)

6.4.1 Primary map



X

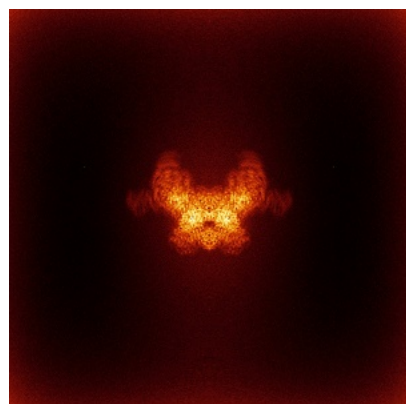


Y

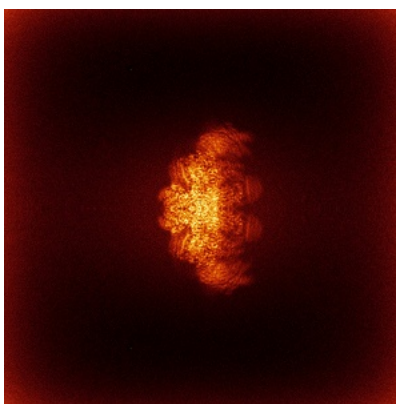


Z

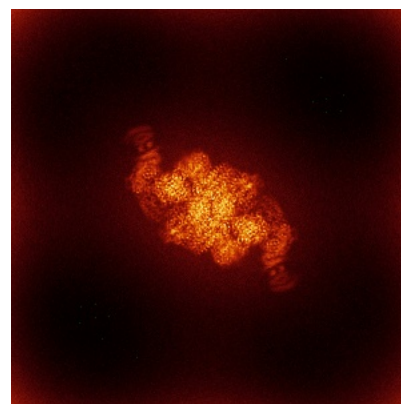
6.4.2 Raw map



X



Y

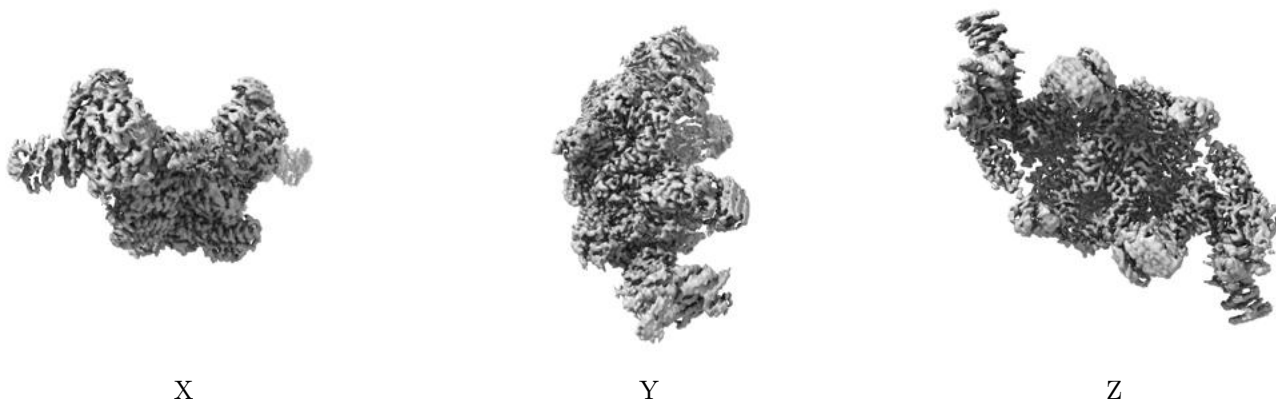


Z

The images above show the map standard deviation projections with false color in three orthogonal directions. Minimum values are shown in green, max in blue, and dark to light orange shades represent small to large values respectively.

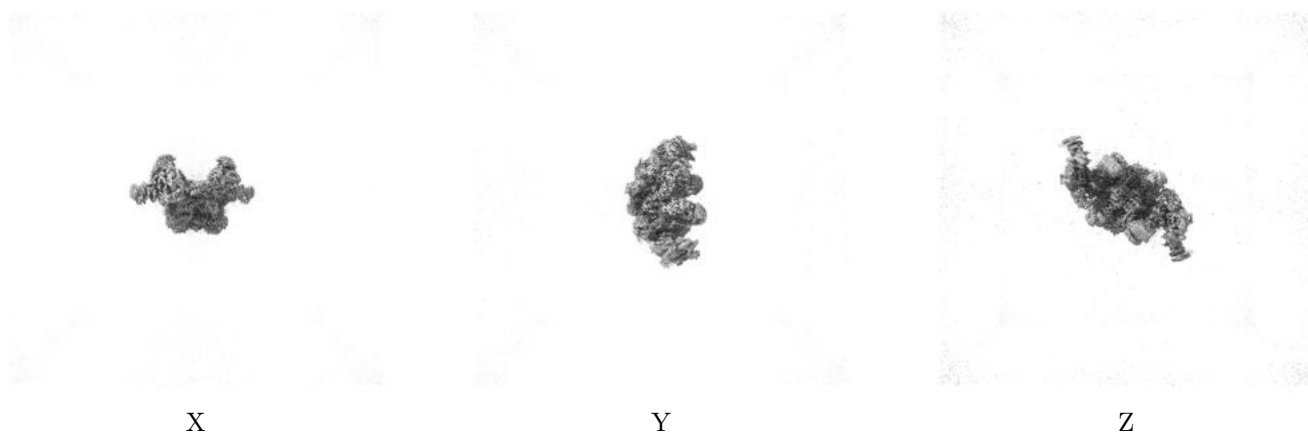
6.5 Orthogonal surface views [i](#)

6.5.1 Primary map



The images above show the 3D surface view of the map at the recommended contour level 0.13. These images, in conjunction with the slice images, may facilitate assessment of whether an appropriate contour level has been provided.

6.5.2 Raw map



These images show the 3D surface of the raw map. The raw map's contour level was selected so that its surface encloses the same volume as the primary map does at its recommended contour level.

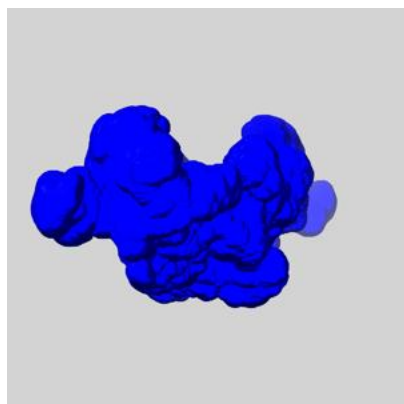
6.6 Mask visualisation [i](#)

This section shows the 3D surface view of the primary map at 50% transparency overlaid with the specified mask at 0% transparency

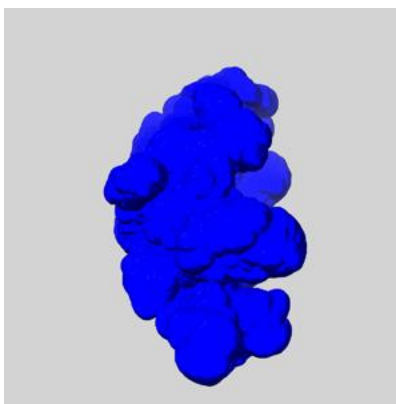
A mask typically either:

- Encompasses the whole structure
- Separates out a domain, a functional unit, a monomer or an area of interest from a larger structure

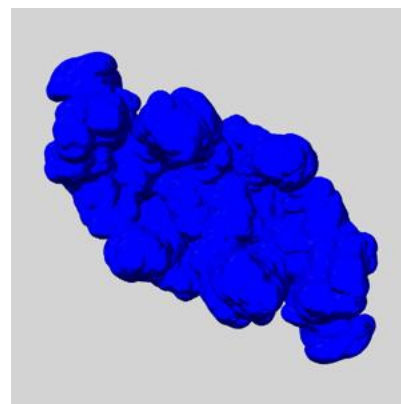
6.6.1 emd_52433_msk_1.map [i](#)



X



Y

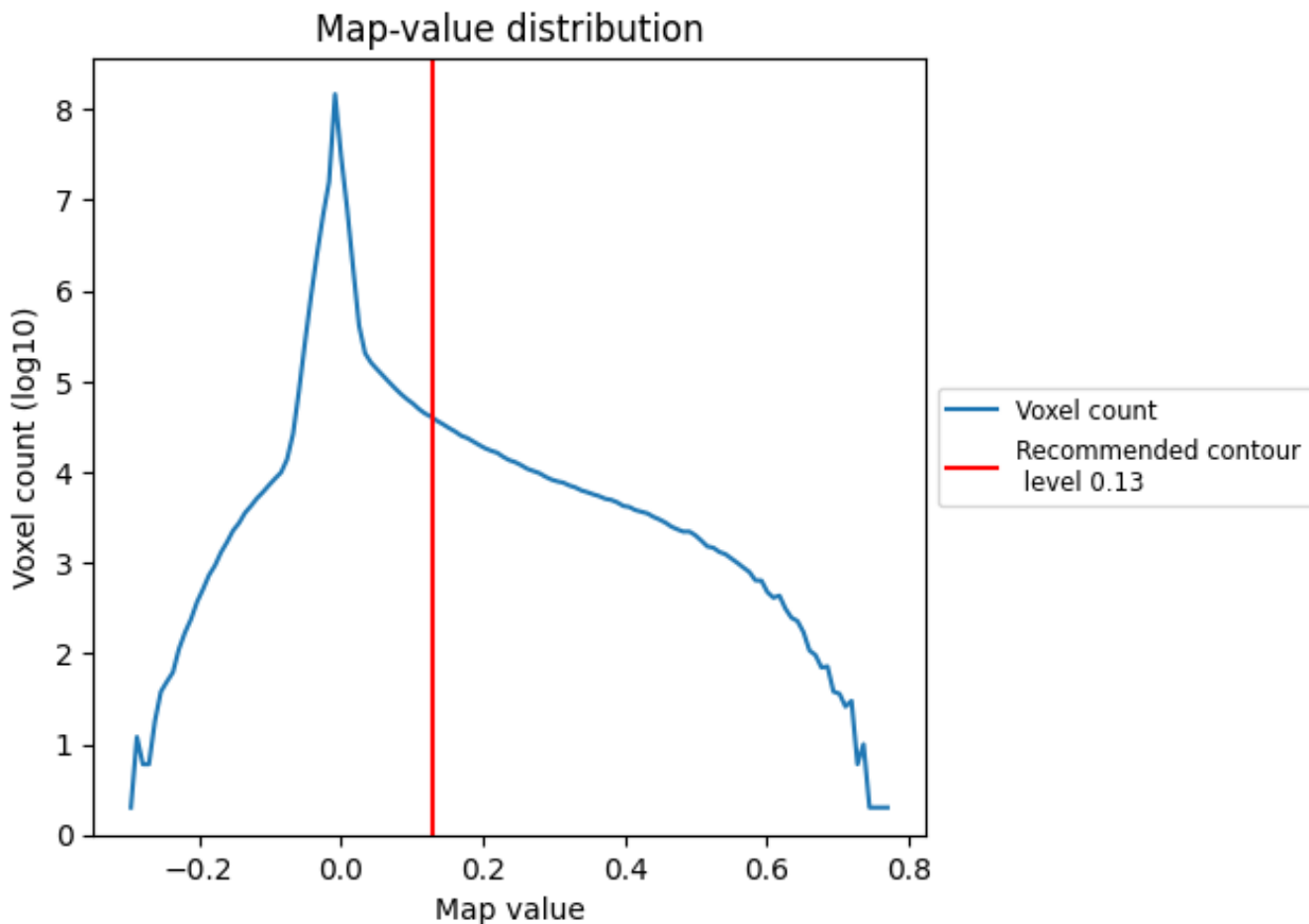


Z

7 Map analysis [i](#)

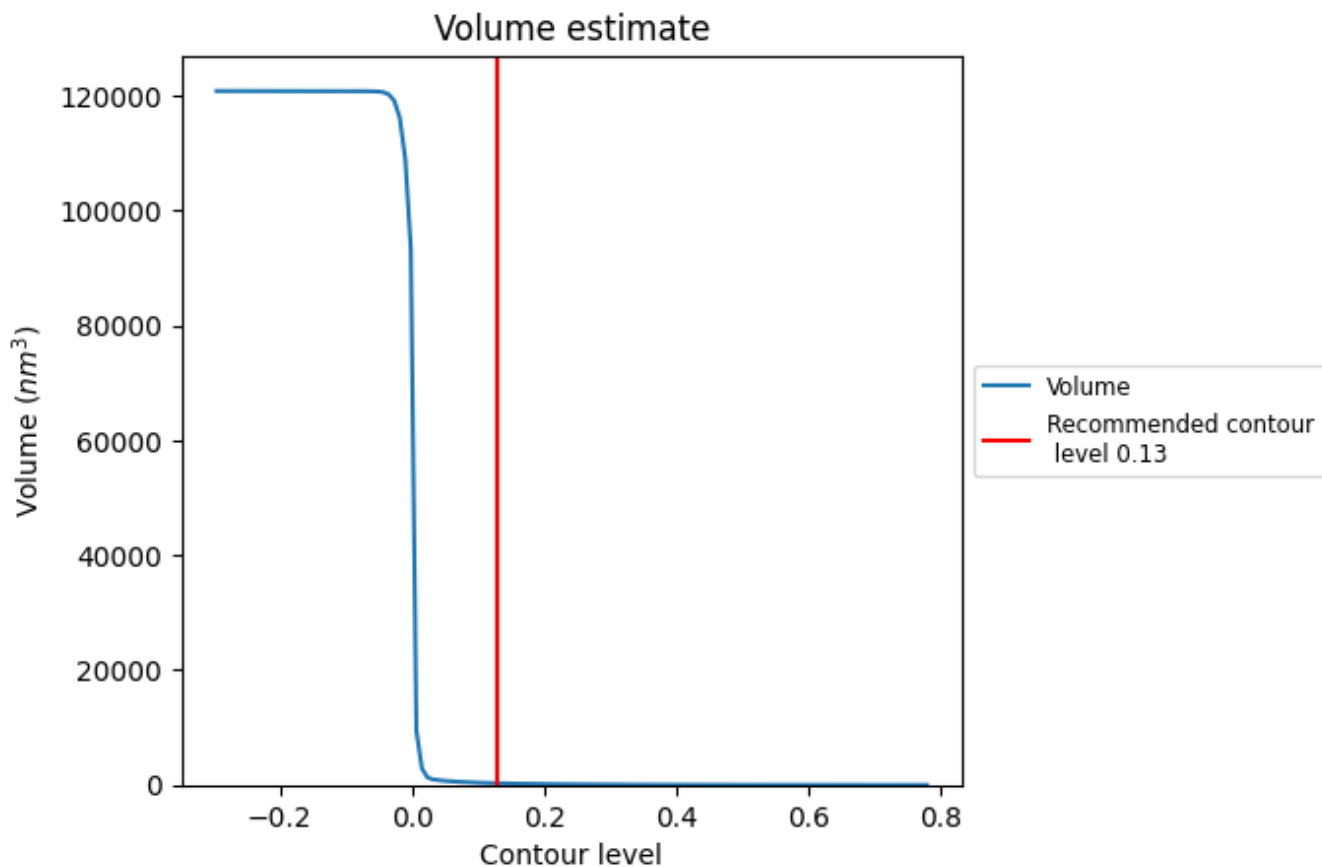
This section contains the results of statistical analysis of the map.

7.1 Map-value distribution [i](#)



The map-value distribution is plotted in 128 intervals along the x-axis. The y-axis is logarithmic. A spike in this graph at zero usually indicates that the volume has been masked.

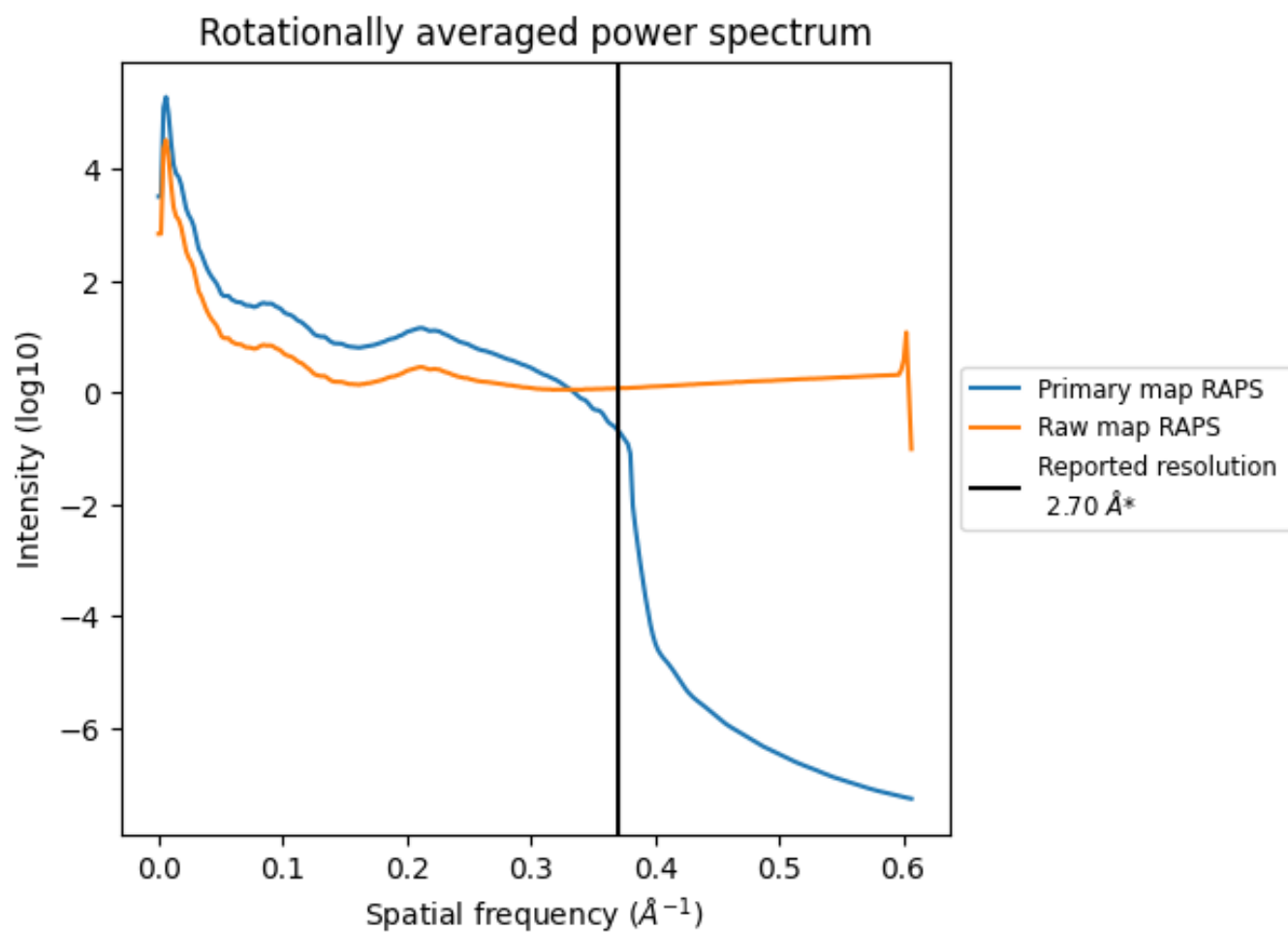
7.2 Volume estimate [i](#)



The volume at the recommended contour level is 292 nm³; this corresponds to an approximate mass of 264 kDa.

The volume estimate graph shows how the enclosed volume varies with the contour level. The recommended contour level is shown as a vertical line and the intersection between the line and the curve gives the volume of the enclosed surface at the given level.

7.3 Rotationally averaged power spectrum i

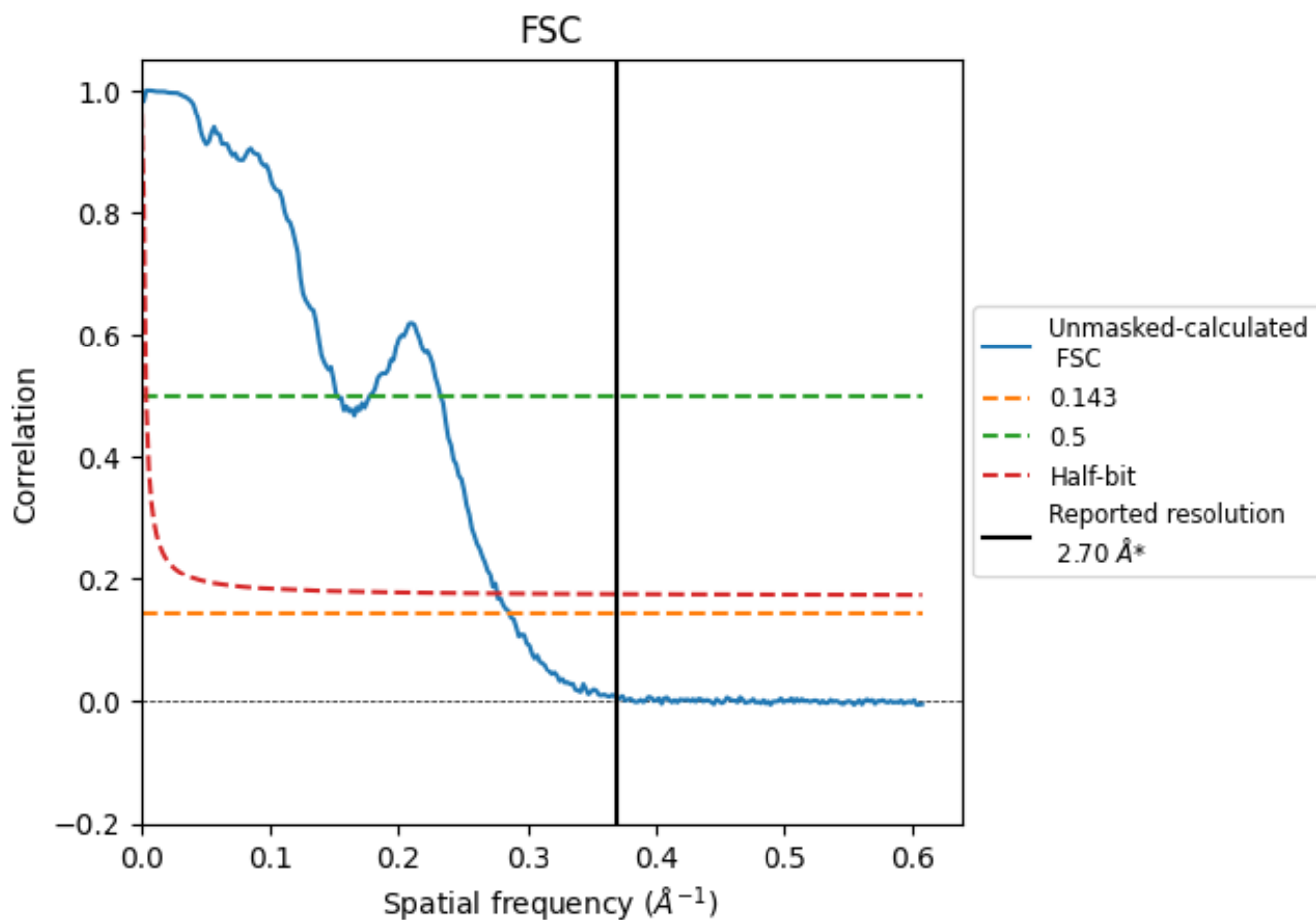


*Reported resolution corresponds to spatial frequency of 0.370 \AA^{-1}

8 Fourier-Shell correlation [i](#)

Fourier-Shell Correlation (FSC) is the most commonly used method to estimate the resolution of single-particle and subtomogram-averaged maps. The shape of the curve depends on the imposed symmetry, mask and whether or not the two 3D reconstructions used were processed from a common reference. The reported resolution is shown as a black line. A curve is displayed for the half-bit criterion in addition to lines showing the 0.143 gold standard cut-off and 0.5 cut-off.

8.1 FSC [i](#)



*Reported resolution corresponds to spatial frequency of 0.370 \AA^{-1}

8.2 Resolution estimates [i](#)

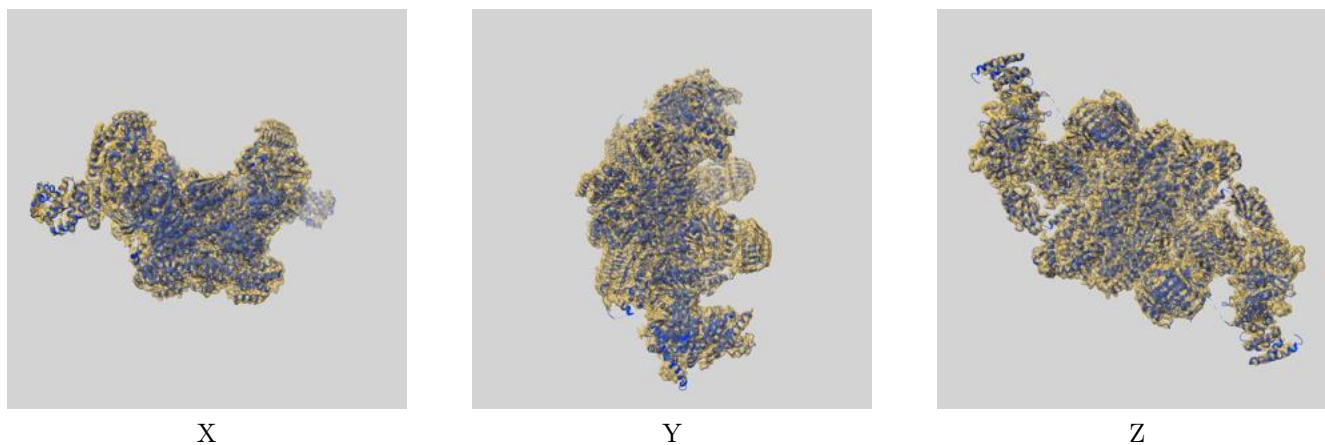
Resolution estimate (Å)	Estimation criterion (FSC cut-off)		
	0.143	0.5	Half-bit
Reported by author	2.70	-	-
Author-provided FSC curve	-	-	-
Unmasked-calculated*	3.50	6.56	3.62

*Resolution estimate based on FSC curve calculated by comparison of deposited half-maps. The value from deposited half-maps intersecting FSC 0.143 CUT-OFF 3.50 differs from the reported value 2.7 by more than 10 %

9 Map-model fit [i](#)

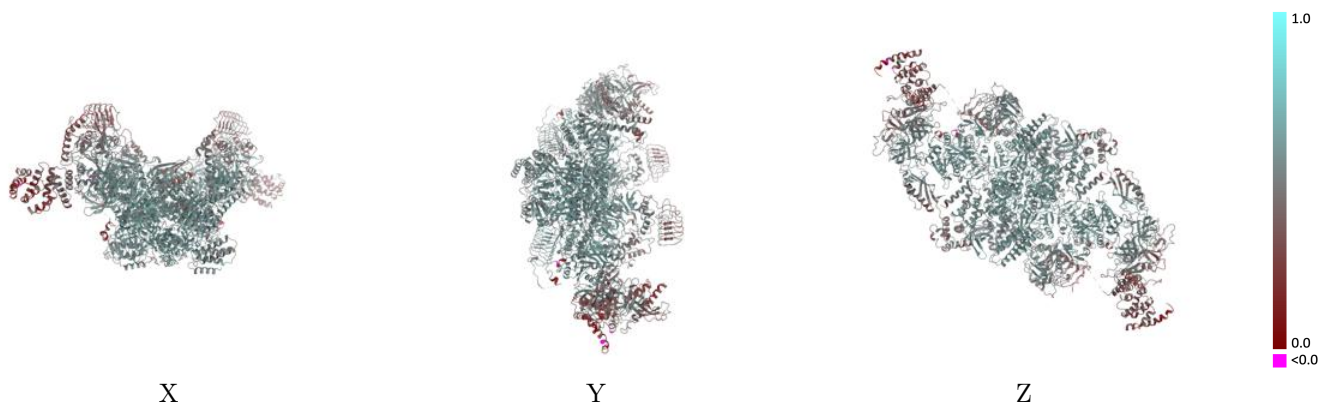
This section contains information regarding the fit between EMDB map EMD-52433 and PDB model 9HVE. Per-residue inclusion information can be found in section 3 on page 7.

9.1 Map-model overlay [i](#)



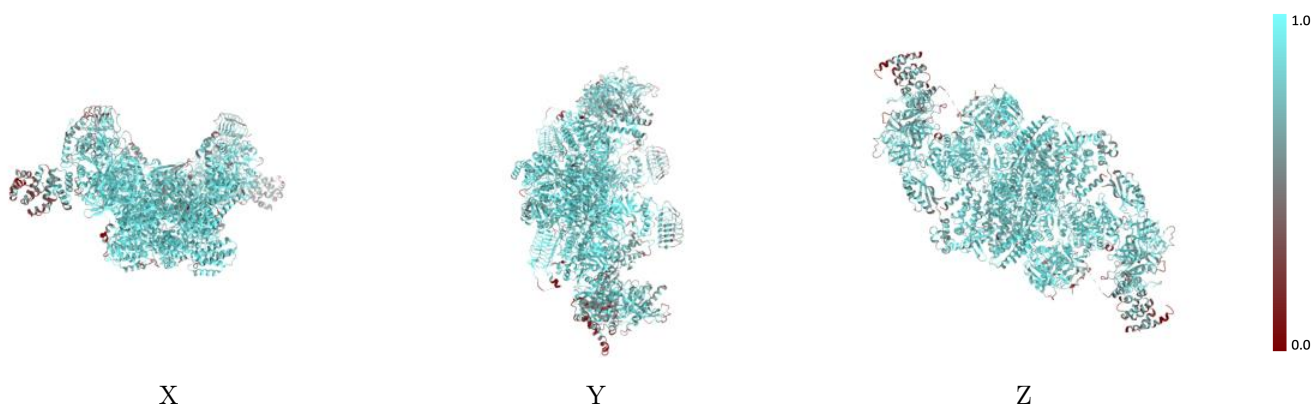
The images above show the 3D surface view of the map at the recommended contour level 0.13 at 50% transparency in yellow overlaid with a ribbon representation of the model coloured in blue. These images allow for the visual assessment of the quality of fit between the atomic model and the map.

9.2 Q-score mapped to coordinate model [\(i\)](#)



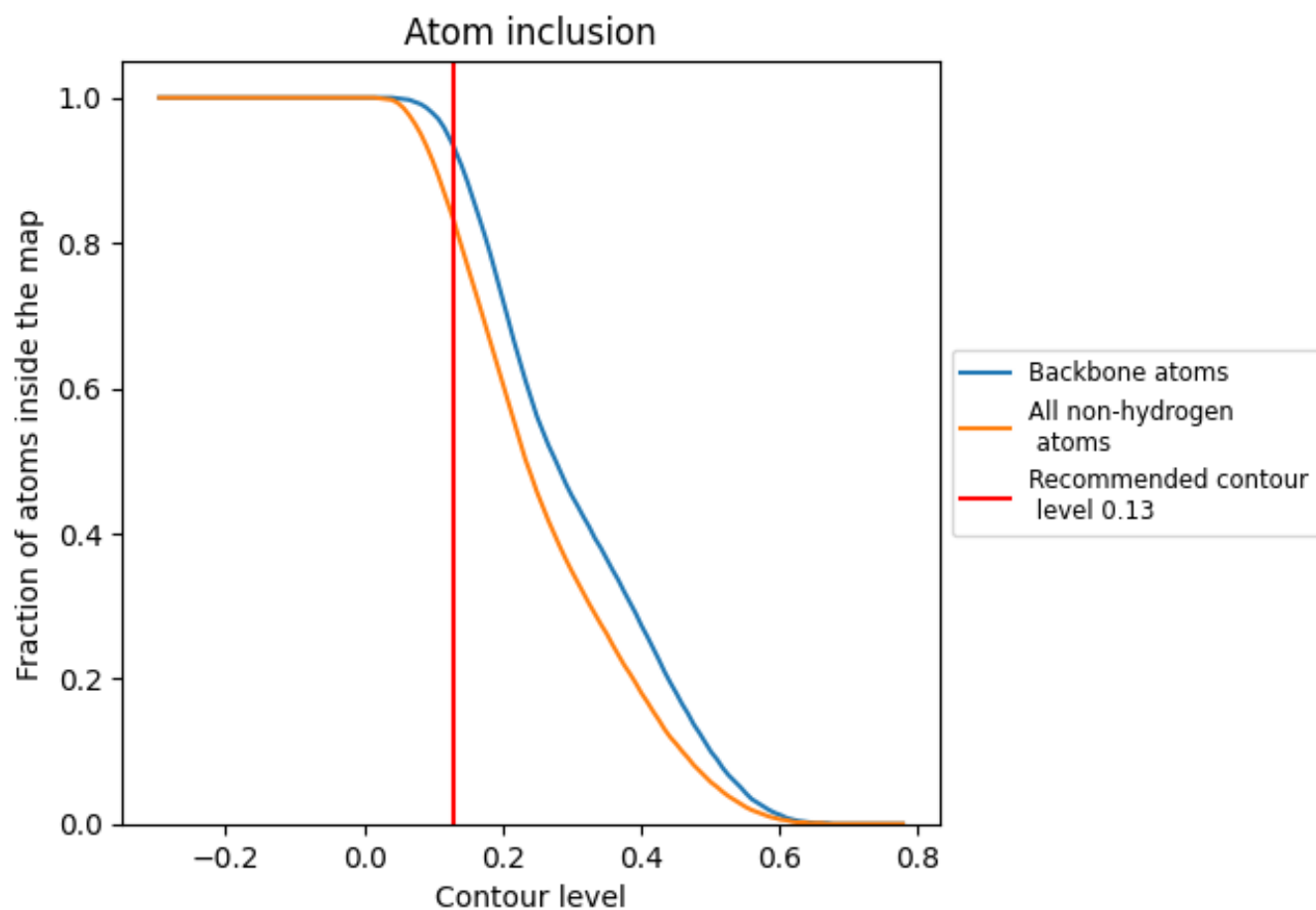
The images above show the model with each residue coloured according to its Q-score. This shows their resolvability in the map with higher Q-score values reflecting better resolvability. Please note: Q-score is calculating the resolvability of atoms, and thus high values are only expected at resolutions at which atoms can be resolved. Low Q-score values may therefore be expected for many entries.

9.3 Atom inclusion mapped to coordinate model [\(i\)](#)



The images above show the model with each residue coloured according to its atom inclusion. This shows to what extent they are inside the map at the recommended contour level (0.13).



































9.4 Atom inclusion [i](#)



At the recommended contour level, 93% of all backbone atoms, 83% of all non-hydrogen atoms, are inside the map.

9.5 Map-model fit summary

The table lists the average atom inclusion at the recommended contour level (0.13) and Q-score for the entire model and for each chain.

Chain	Atom inclusion	Q-score
All	 0.8300	 0.5240
A	 0.8940	 0.5680
B	 0.8960	 0.5670
C	 0.9040	 0.5770
D	 0.9060	 0.5750
E	 0.8060	 0.4940
F	 0.8110	 0.5020
G	 0.9330	 0.5980
H	 0.9310	 0.5980
I	 0.7970	 0.5000
J	 0.8010	 0.5030
K	 0.7660	 0.4980
L	 0.7640	 0.5010
M	 0.6500	 0.3000
N	 0.6750	 0.3090
O	 0.7600	 0.4800
P	 0.7610	 0.4810

