



# Full wwPDB X-ray Structure Validation Report ⓘ

Jan 14, 2026 – 08:26 pm GMT

PDB ID : 9ID2 / pdb\_00009id2  
Title : Human Deoxyhypusine Synthase Fragment Screening Campaign - ligand VT00019  
Authors : Wilk, P.; Water-Wilk, E.; Krojer, T.; Grudnik, P.  
Deposited on : 2025-02-15  
Resolution : 1.45 Å(reported)

This is a Full wwPDB X-ray Structure Validation Report for a publicly released PDB entry.

We welcome your comments at [validation@mail.wwpdb.org](mailto:validation@mail.wwpdb.org)

A user guide is available at

<https://www.wwpdb.org/validation/2017/XrayValidationReportHelp>

with specific help available everywhere you see the ⓘ symbol.

The types of validation reports are described at

<http://www.wwpdb.org/validation/2017/FAQs#types>.

---

The following versions of software and data (see [references ⓘ](#)) were used in the production of this report:

MolProbity	:	4-5-2 with Phenix2.0
Mogul	:	1.8.4, CSD as541be (2020)
Xtriage (Phenix)	:	2.0
EDS	:	3.0
buster-report	:	1.1.7 (2018)
Percentile statistics	:	20231227.v01 (using entries in the PDB archive December 27th 2023)
CCP4	:	9.0.010 (Gargrove)
Density-Fitness	:	1.0.12
Ideal geometry (proteins)	:	Engh & Huber (2001)
Ideal geometry (DNA, RNA)	:	Parkinson et al. (1996)
Validation Pipeline (wwPDB-VP)	:	2.47

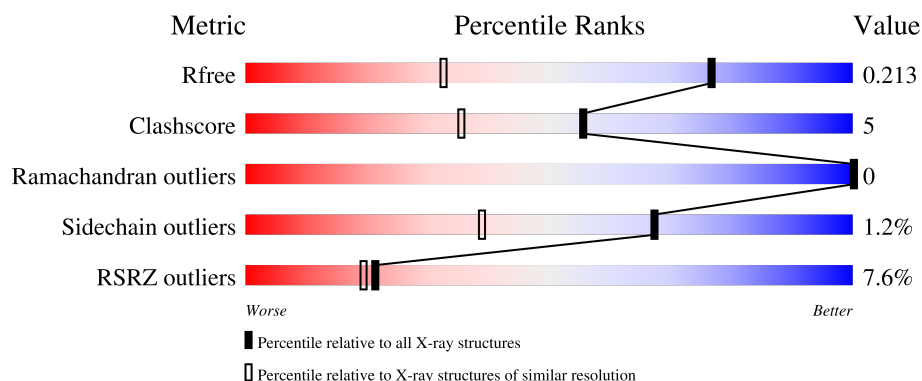
# 1 Overall quality at a glance

The following experimental techniques were used to determine the structure:

*X-RAY DIFFRACTION*


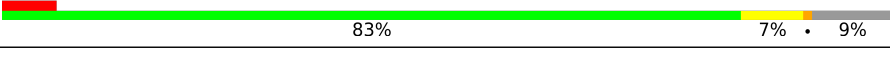
The reported resolution of this entry is 1.45 Å.

Percentile scores (ranging between 0-100) for global validation metrics of the entry are shown in the following graphic. The table shows the number of entries on which the scores are based.



Metric	Whole archive (#Entries)	Similar resolution (#Entries, resolution range(Å))
$R_{free}$	164625	1556 (1.46-1.46)
Clashscore	180529	1653 (1.46-1.46)
Ramachandran outliers	177936	1635 (1.46-1.46)
Sidechain outliers	177891	1635 (1.46-1.46)
RSRZ outliers	164620	1556 (1.46-1.46)

The table below summarises the geometric issues observed across the polymeric chains and their fit to the electron density. The red, orange, yellow and green segments of the lower bar indicate the fraction of residues that contain outliers for  $\geq 3$ , 2, 1 and 0 types of geometric quality criteria respectively. A grey segment represents the fraction of residues that are not modelled. The numeric value for each fraction is indicated below the corresponding segment, with a dot representing fractions  $\leq 5\%$ . The upper red bar (where present) indicates the fraction of residues that have poor fit to the electron density. The numeric value is given above the bar.

Mol	Chain	Length	Quality of chain
1	A	370	 8% 79% 11% • 9%
1	B	370	 6% 83% 7% • 9%

2 Entry composition ⓘ

There are 6 unique types of molecules in this entry. The entry contains 6008 atoms, of which 0 are hydrogens and 0 are deuteriums.

In the tables below, the ZeroOcc column contains the number of atoms modelled with zero occupancy, the AltConf column contains the number of residues with at least one atom in alternate conformation and the Trace column contains the number of residues modelled with at most 2 atoms.

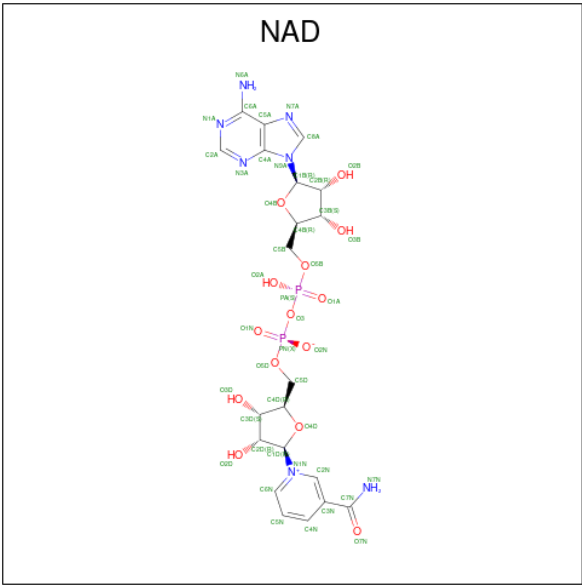
- Molecule 1 is a protein called Deoxyhypusine synthase.

Mol	Chain	Residues	Atoms					ZeroOcc	AltConf	Trace
			Total	C	N	O	S			
1	A	336	2710	1731	458	503	18	0	13	0
1	B	336	2690	1713	454	506	17	0	9	0

There are 2 discrepancies between the modelled and reference sequences:

Chain	Residue	Modelled	Actual	Comment	Reference
A	370	MET	-	expression tag	UNP P49366
B	370	MET	-	expression tag	UNP P49366

- Molecule 2 is NICOTINAMIDE-ADENINE-DINUCLEOTIDE (CCD ID: NAD) (formula: C<sub>21</sub>H<sub>27</sub>N<sub>7</sub>O<sub>14</sub>P<sub>2</sub>).



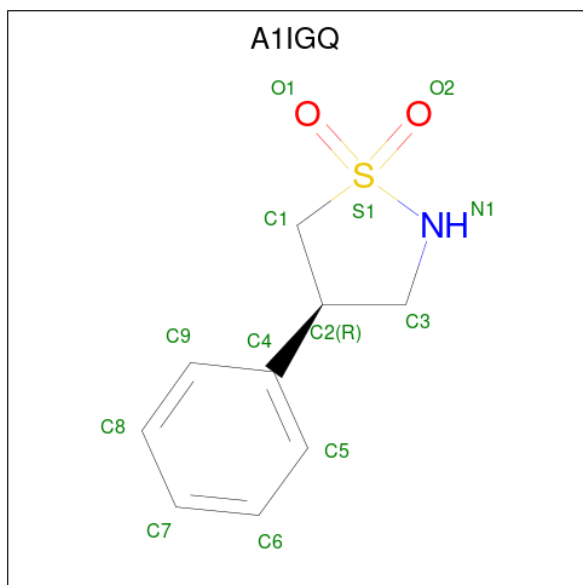
Mol	Chain	Residues	Atoms					ZeroOcc	AltConf
			Total	C	N	O	P		
2	A	1	44	21	7	14	2	0	0

Continued on next page...

Continued from previous page...

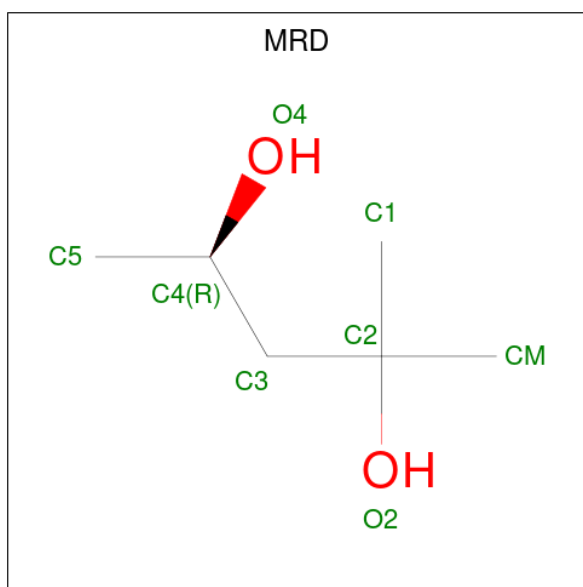
Mol	Chain	Residues	Atoms					ZeroOcc	AltConf
2	B	1	Total	C	N	O	P	0	0
			44	21	7	14	2		

- Molecule 3 is (4R)-4-phenyl-1,2-thiazolidine 1,1-dioxide (CCD ID: A1IGQ) (formula:  $C_9H_{11}NO_2S$ ) (labeled as "Ligand of Interest" by depositor).



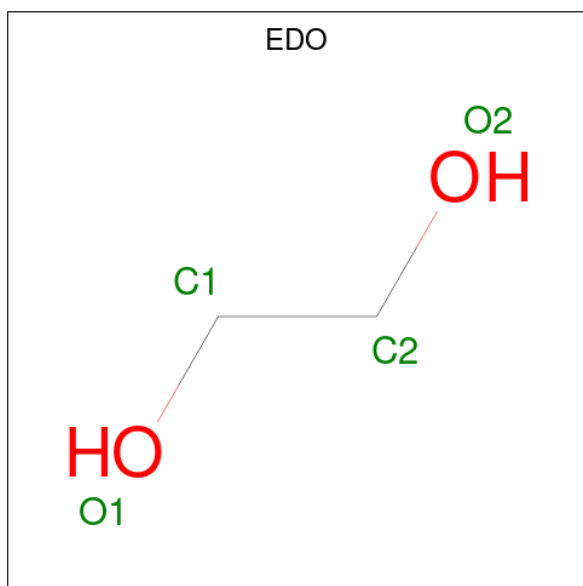
Mol	Chain	Residues	Atoms					ZeroOcc	AltConf
3	A	1	Total	C	N	O	S	0	1
			26	18	2	4	2		
3	B	1	Total	C	N	O	S	0	0
			13	9	1	2	1		

- Molecule 4 is (4R)-2-METHYLPENTANE-2,4-DIOL (CCD ID: MRD) (formula:  $C_6H_{14}O_2$ ).



Mol	Chain	Residues	Atoms			ZeroOcc	AltConf
4	B	1	Total	C	O	0	0
			8	6	2		

- Molecule 5 is 1,2-ETHANEDIOL (CCD ID: EDO) (formula:  $C_2H_6O_2$ ).



Mol	Chain	Residues	Atoms			ZeroOcc	AltConf
5	B	1	Total	C	O	0	0
			4	2	2		

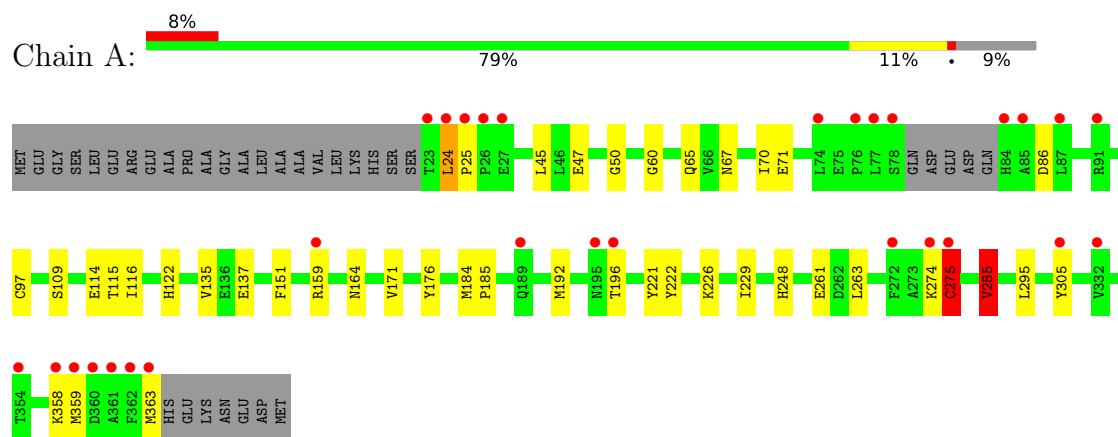
- Molecule 6 is water.

Mol	Chain	Residues	Atoms		ZeroOcc	AltConf
6	A	234	Total 234	O 234	0	0
6	B	235	Total 235	O 235	0	0

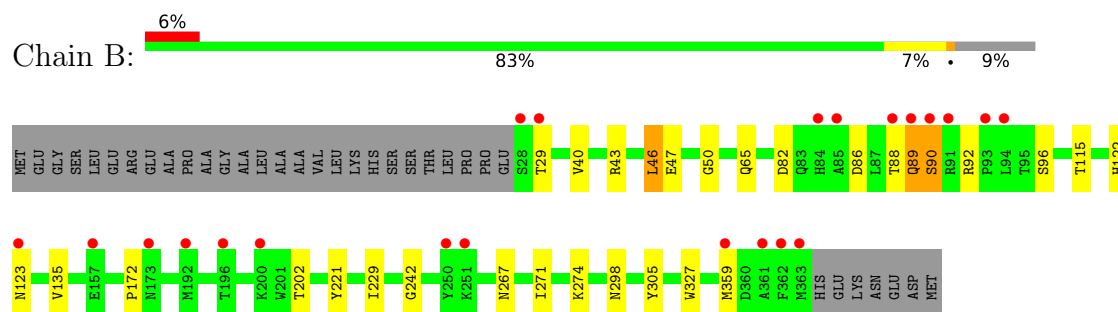
### 3 Residue-property plots [i](#)

These plots are drawn for all protein, RNA, DNA and oligosaccharide chains in the entry. The first graphic for a chain summarises the proportions of the various outlier classes displayed in the second graphic. The second graphic shows the sequence view annotated by issues in geometry and electron density. Residues are color-coded according to the number of geometric quality criteria for which they contain at least one outlier: green = 0, yellow = 1, orange = 2 and red = 3 or more. A red dot above a residue indicates a poor fit to the electron density ( $RSRZ > 2$ ). Stretches of 2 or more consecutive residues without any outlier are shown as a green connector. Residues present in the sample, but not in the model, are shown in grey.

#### • Molecule 1: Deoxyhypusine synthase



#### • Molecule 1: Deoxyhypusine synthase



## 4 Data and refinement statistics

Property	Value	Source
Space group	P 32 2 1	Depositor
Cell constants a, b, c, $\alpha$ , $\beta$ , $\gamma$	105.15Å 105.15Å 160.56Å 90.00° 90.00° 120.00°	Depositor
Resolution (Å)	49.96 – 1.45 49.96 – 1.45	Depositor EDS
% Data completeness (in resolution range)	99.9 (49.96-1.45) 99.9 (49.96-1.45)	Depositor EDS
$R_{merge}$	0.07	Depositor
$R_{sym}$	(Not available)	Depositor
$\langle I/\sigma(I) \rangle$ <sup>1</sup>	1.04 (at 1.45Å)	Xtriage
Refinement program	REFMAC 5.8.0419	Depositor
R, $R_{free}$	0.191 , 0.207 0.200 , 0.213	Depositor DCC
$R_{free}$ test set	8991 reflections (4.95%)	wwPDB-VP
Wilson B-factor (Å <sup>2</sup> )	29.3	Xtriage
Anisotropy	0.110	Xtriage
Bulk solvent $k_{sol}$ (e/Å <sup>3</sup> ), $B_{sol}$ (Å <sup>2</sup> )	0.36 , 39.2	EDS
L-test for twinning <sup>2</sup>	$\langle  L  \rangle = 0.51$ , $\langle L^2 \rangle = 0.34$	Xtriage
Estimated twinning fraction	0.014 for -h,-k,l	Xtriage
$F_o, F_c$ correlation	0.97	EDS
Total number of atoms	6008	wwPDB-VP
Average B, all atoms (Å <sup>2</sup> )	35.0	wwPDB-VP

Xtriage's analysis on translational NCS is as follows: *The largest off-origin peak in the Patterson function is 2.96% of the height of the origin peak. No significant pseudotranslation is detected.*

<sup>1</sup>Intensities estimated from amplitudes.

<sup>2</sup>Theoretical values of  $\langle |L| \rangle$ ,  $\langle L^2 \rangle$  for acentric reflections are 0.5, 0.333 respectively for untwinned datasets, and 0.375, 0.2 for perfectly twinned datasets.



## 5 Model quality

### 5.1 Standard geometry

Bond lengths and bond angles in the following residue types are not validated in this section: NAD, EDO, CSS, A1IGQ, MRD

The Z score for a bond length (or angle) is the number of standard deviations the observed value is removed from the expected value. A bond length (or angle) with  $|Z| > 5$  is considered an outlier worth inspection. RMSZ is the root-mean-square of all Z scores of the bond lengths (or angles).

Mol	Chain	Bond lengths		Bond angles	
		RMSZ	$\# Z  > 5$	RMSZ	$\# Z  > 5$
1	A	1.21	8/2787 (0.3%)	1.40	12/3776 (0.3%)
1	B	1.19	6/2757 (0.2%)	1.29	13/3736 (0.3%)
All	All	1.20	14/5544 (0.3%)	1.35	25/7512 (0.3%)

Chiral center outliers are detected by calculating the chiral volume of a chiral center and verifying if the center is modelled as a planar moiety or with the opposite hand. A planarity outlier is detected by checking planarity of atoms in a peptide group, atoms in a mainchain group or atoms of a sidechain that are expected to be planar.

Mol	Chain	#Chirality outliers	#Planarity outliers
1	A	0	4
1	B	0	2
All	All	0	6

All (14) bond length outliers are listed below:

Mol	Chain	Res	Type	Atoms	Z	Observed(Å)	Ideal(Å)
1	B	46[A]	LEU	CA-C	7.66	1.63	1.52
1	B	46[B]	LEU	CA-C	7.66	1.63	1.52
1	A	285[A]	VAL	CA-C	6.87	1.62	1.52
1	A	285[B]	VAL	CA-C	6.87	1.62	1.52
1	B	271	ILE	C-O	-5.97	1.17	1.24
1	A	122	HIS	CE1-NE2	5.92	1.38	1.32
1	A	275[A]	CYS	CA-C	5.66	1.59	1.52
1	A	275[B]	CYS	CA-C	5.66	1.59	1.52
1	B	172	PRO	C-O	-5.64	1.17	1.23
1	B	267	ASN	C-O	-5.54	1.17	1.24
1	A	248	HIS	C-O	5.43	1.30	1.24
1	B	229	ILE	N-CA	5.18	1.50	1.46
1	A	60	GLY	C-O	5.15	1.29	1.23
1	A	114	GLU	N-CA	5.10	1.52	1.46

All (25) bond angle outliers are listed below:

Mol	Chain	Res	Type	Atoms	Z	Observed(°)	Ideal(°)
1	A	24	LEU	CA-C-N	14.52	130.26	119.66
1	A	24	LEU	C-N-CA	14.52	130.26	119.66
1	B	65[A]	GLN	CA-C-O	8.47	129.40	120.42
1	B	65[B]	GLN	CA-C-O	8.47	129.40	120.42
1	B	29	THR	CA-CB-OG1	-7.06	99.00	109.60
1	B	47	GLU	CB-CG-CD	6.87	124.27	112.60
1	A	229	ILE	O-C-N	6.77	125.63	121.37
1	A	151	PHE	CA-C-O	-6.49	113.67	120.55
1	A	285[A]	VAL	CA-C-O	-6.24	113.84	120.64
1	A	285[B]	VAL	CA-C-O	-6.24	113.84	120.64
1	B	46[A]	LEU	CA-C-O	-6.17	111.80	119.38
1	B	46[B]	LEU	CA-C-O	-6.17	111.80	119.38
1	B	65[A]	GLN	N-CA-C	5.71	117.58	111.36
1	B	65[B]	GLN	N-CA-C	5.71	117.58	111.36
1	B	46[A]	LEU	N-CA-C	5.41	119.14	112.54
1	B	46[B]	LEU	N-CA-C	5.41	119.14	112.54
1	A	116	ILE	CA-C-O	-5.18	115.36	120.85
1	B	305	TYR	CA-CB-CG	5.18	123.22	113.90
1	A	275[A]	CYS	CA-C-O	-5.14	115.09	121.06
1	A	275[B]	CYS	CA-C-O	-5.14	115.09	121.06
1	A	274	LYS	CA-C-N	5.11	130.72	122.29
1	A	274	LYS	C-N-CA	5.11	130.72	122.29
1	B	40	VAL	CA-C-O	-5.07	118.22	122.63
1	B	202	THR	O-C-N	-5.02	118.50	121.71
1	A	305	TYR	CA-CB-CG	5.02	122.93	113.90

There are no chirality outliers.

All (6) planarity outliers are listed below:

Mol	Chain	Res	Type	Group
1	A	275[A]	CYS	Mainchain
1	A	275[B]	CYS	Mainchain
1	A	285[A]	VAL	Mainchain
1	A	285[B]	VAL	Mainchain
1	B	46[A]	LEU	Mainchain
1	B	46[B]	LEU	Mainchain

## 5.2 Too-close contacts ⓘ

In the following table, the Non-H and H(model) columns list the number of non-hydrogen atoms and hydrogen atoms in the chain respectively. The H(added) column lists the number of hydrogen atoms added and optimized by MolProbity. The Clashes column lists the number of clashes within the asymmetric unit, whereas Symm-Clashes lists symmetry-related clashes.

Mol	Chain	Non-H	H(model)	H(added)	Clashes	Symm-Clashes
1	A	2710	0	2713	30	0
1	B	2690	0	2676	17	0
2	A	44	0	26	0	0
2	B	44	0	26	1	0
3	A	26	0	0	6	0
3	B	13	0	0	1	0
4	B	8	0	14	0	0
5	B	4	0	6	1	0
6	A	234	0	0	8	0
6	B	235	0	0	4	0
All	All	6008	0	5461	50	0

The all-atom clashscore is defined as the number of clashes found per 1000 atoms (including hydrogen atoms). The all-atom clashscore for this structure is 5.

All (50) close contacts within the same asymmetric unit are listed below, sorted by their clash magnitude.

Atom-1	Atom-2	Interatomic distance (Å)	Clash overlap (Å)
3:A:402[A]:A1IGQ:C2	3:A:402[A]:A1IGQ:C3	1.79	1.49
3:A:402[B]:A1IGQ:C2	3:A:402[B]:A1IGQ:C3	1.78	1.41
1:A:275[B]:CYS:SG	6:A:704:HOH:O	2.01	1.16
1:A:67:ASN:OD1	1:A:358:LYS:HE3	1.81	0.80
1:A:358:LYS:NZ	6:A:502:HOH:O	2.13	0.79
1:A:261:GLU:HG2	6:A:521:HOH:O	1.81	0.79
1:A:70:ILE:HG21	1:A:358:LYS:HD3	1.65	0.77
1:A:171[A]:VAL:HG11	6:A:603:HOH:O	1.84	0.77
1:B:89:GLN:HE21	1:B:89:GLN:CA	2.01	0.74
1:A:47:GLU:OE1	6:A:501:HOH:O	2.07	0.71
1:A:50:GLY:HA3	3:A:402[A]:A1IGQ:C2	2.25	0.66
1:A:137[B]:GLU:OE1	6:A:503:HOH:O	2.14	0.65
1:A:171[A]:VAL:CG1	6:A:603:HOH:O	2.40	0.65
3:A:402[A]:A1IGQ:C3	3:A:402[A]:A1IGQ:C4	2.73	0.65
1:A:226:LYS:NZ	6:A:505:HOH:O	2.30	0.64
1:B:89:GLN:HE21	1:B:89:GLN:HA	1.66	0.60
3:A:402[B]:A1IGQ:C3	3:A:402[B]:A1IGQ:C4	2.73	0.59

*Continued on next page...*

*Continued from previous page...*

Atom-1	Atom-2	Interatomic distance (Å)	Clash overlap (Å)
1:B:89:GLN:HE21	1:B:89:GLN:N	2.00	0.57
1:A:70:ILE:CG2	1:A:358:LYS:HD3	2.32	0.57
1:A:285[B]:VAL:HG12	2:B:403:NAD:O3D	2.03	0.57
1:A:359:MET:HE3	1:A:359:MET:HA	1.87	0.57
1:A:159[B]:ARG:NH1	1:B:298:ASN:OD1	2.38	0.56
1:A:70:ILE:HG21	1:A:358:LYS:CD	2.37	0.54
1:A:137[B]:GLU:OE2	1:A:176:TYR:OH	2.24	0.53
1:A:295:LEU:HD12	1:A:295:LEU:O	2.11	0.50
1:B:43:ARG:HD2	6:B:502:HOH:O	2.12	0.48
1:B:43:ARG:NH2	6:B:502:HOH:O	2.12	0.48
1:A:192[B]:MET:CE	1:A:196:THR:HG21	2.45	0.47
1:B:90:SER:HB2	6:B:512:HOH:O	2.13	0.47
3:A:402[A]:A1IGQ:C3	3:A:402[A]:A1IGQ:C5	2.93	0.46
1:A:24:LEU:HA	1:A:25:PRO:HD3	1.75	0.46
1:A:164:ASN:HB3	1:B:327:TRP:CE2	2.51	0.45
1:B:89:GLN:N	1:B:89:GLN:NE2	2.64	0.45
1:A:359:MET:HE2	1:A:363:MET:HG3	1.99	0.44
1:B:96:SER:HA	1:B:274:LYS:HD3	1.99	0.44
1:B:88:THR:C	1:B:89:GLN:HE21	2.27	0.43
1:A:222:TYR:OH	1:A:226:LYS:NZ	2.50	0.42
1:A:97:CYS:HA	1:A:275[A]:CYS:HB3	2.00	0.42
1:A:184:MET:N	1:A:185:PRO:HD2	2.35	0.42
1:B:50:GLY:HA3	3:B:404:A1IGQ:C7	2.50	0.42
1:A:263:LEU:HD21	1:B:242:GLY:O	2.19	0.42
1:B:135:VAL:HA	1:B:221:TYR:CE2	2.55	0.42
5:B:402:EDO:H22	6:B:700:HOH:O	2.19	0.41
1:B:122:HIS:CE1	1:B:359[B]:MET:HE1	2.54	0.41
1:A:359:MET:HE3	1:A:359:MET:O	2.19	0.41
1:A:71:GLU:OE2	1:A:358:LYS:NZ	2.50	0.41
1:B:82:ASP:O	1:B:86:ASP:HB2	2.22	0.40
1:B:92:ARG:HH22	1:B:123:ASN:CG	2.29	0.40
1:A:135:VAL:HA	1:A:221:TYR:CE2	2.56	0.40

There are no symmetry-related clashes.

## 5.3 Torsion angles ⓘ

### 5.3.1 Protein backbone ⓘ

In the following table, the Percentiles column shows the percent Ramachandran outliers of the chain as a percentile score with respect to all X-ray entries followed by that with respect to entries

of similar resolution.

The Analysed column shows the number of residues for which the backbone conformation was analysed, and the total number of residues.

Mol	Chain	Analysed	Favoured	Allowed	Outliers	Percentiles	
1	A	344/370 (93%)	340 (99%)	4 (1%)	0	100	100
1	B	342/370 (92%)	337 (98%)	5 (2%)	0	100	100
All	All	686/740 (93%)	677 (99%)	9 (1%)	0	100	100

There are no Ramachandran outliers to report.

### 5.3.2 Protein sidechains ⓘ

In the following table, the Percentiles column shows the percent sidechain outliers of the chain as a percentile score with respect to all X-ray entries followed by that with respect to entries of similar resolution.

The Analysed column shows the number of residues for which the sidechain conformation was analysed, and the total number of residues.

Mol	Chain	Analysed	Rotameric	Outliers	Percentiles	
1	A	295/310 (95%)	289 (98%)	6 (2%)	50	19
1	B	292/310 (94%)	289 (99%)	3 (1%)	73	48
All	All	587/620 (95%)	578 (98%)	9 (2%)	67	30

All (9) residues with a non-rotameric sidechain are listed below:

Mol	Chain	Res	Type
1	A	65[A]	GLN
1	A	65[B]	GLN
1	A	86[A]	ASP
1	A	86[B]	ASP
1	A	109	SER
1	A	115	THR
1	B	89	GLN
1	B	90	SER
1	B	115	THR

Sometimes sidechains can be flipped to improve hydrogen bonding and reduce clashes. All (4) such sidechains are listed below:

Mol	Chain	Res	Type
1	B	37	ASN
1	B	64	GLN
1	B	89	GLN
1	B	310	GLN

### 5.3.3 RNA ⓘ

There are no RNA molecules in this entry.

## 5.4 Non-standard residues in protein, DNA, RNA chains ⓘ

2 non-standard protein/DNA/RNA residues are modelled in this entry.

In the following table, the Counts columns list the number of bonds (or angles) for which Mogul statistics could be retrieved, the number of bonds (or angles) that are observed in the model and the number of bonds (or angles) that are defined in the Chemical Component Dictionary. The Link column lists molecule types, if any, to which the group is linked. The Z score for a bond length (or angle) is the number of standard deviations the observed value is removed from the expected value. A bond length (or angle) with  $|Z| > 2$  is considered an outlier worth inspection. RMSZ is the root-mean-square of all Z scores of the bond lengths (or angles).

Mol	Type	Chain	Res	Link	Bond lengths			Bond angles		
					Counts	RMSZ	$\# Z  > 2$	Counts	RMSZ	$\# Z  > 2$
1	CSS	A	177	1	4,6,7	0.75	0	1,6,8	0.05	0
1	CSS	B	177	1	4,6,7	0.78	0	1,6,8	0.56	0

In the following table, the Chirals column lists the number of chiral outliers, the number of chiral centers analysed, the number of these observed in the model and the number defined in the Chemical Component Dictionary. Similar counts are reported in the Torsion and Rings columns. '-' means no outliers of that kind were identified.

Mol	Type	Chain	Res	Link	Chirals	Torsions	Rings
1	CSS	A	177	1	-	0/1/5/7	-
1	CSS	B	177	1	-	0/1/5/7	-

There are no bond length outliers.

There are no bond angle outliers.

There are no chirality outliers.

There are no torsion outliers.

There are no ring outliers.

No monomer is involved in short contacts.

## 5.5 Carbohydrates [i](#)

There are no oligosaccharides in this entry.

## 5.6 Ligand geometry [i](#)

7 ligands are modelled in this entry.

In the following table, the Counts columns list the number of bonds (or angles) for which Mogul statistics could be retrieved, the number of bonds (or angles) that are observed in the model and the number of bonds (or angles) that are defined in the Chemical Component Dictionary. The Link column lists molecule types, if any, to which the group is linked. The Z score for a bond length (or angle) is the number of standard deviations the observed value is removed from the expected value. A bond length (or angle) with  $|Z| > 2$  is considered an outlier worth inspection. RMSZ is the root-mean-square of all Z scores of the bond lengths (or angles).

Mol	Type	Chain	Res	Link	Bond lengths			Bond angles		
					Counts	RMSZ	# Z  > 2	Counts	RMSZ	# Z  > 2
3	A1IGQ	A	402[B]	-	12,14,14	6.52	4 (33%)	13,20,20	0.82	0
2	NAD	B	403	-	42,48,48	1.19	3 (7%)	50,73,73	1.07	3 (6%)
2	NAD	A	401	-	42,48,48	0.95	2 (4%)	50,73,73	1.32	5 (10%)
5	EDO	B	402	-	3,3,3	0.14	0	2,2,2	0.57	0
3	A1IGQ	B	404	-	12,14,14	6.73	3 (25%)	13,20,20	1.22	2 (15%)
3	A1IGQ	A	402[A]	-	12,14,14	6.84	5 (41%)	13,20,20	1.73	2 (15%)
4	MRD	B	401	-	7,7,7	0.25	0	9,10,10	0.77	0

In the following table, the Chirals column lists the number of chiral outliers, the number of chiral centers analysed, the number of these observed in the model and the number defined in the Chemical Component Dictionary. Similar counts are reported in the Torsion and Rings columns. '-' means no outliers of that kind were identified.

Mol	Type	Chain	Res	Link	Chirals	Torsions	Rings
3	A1IGQ	A	402[B]	-	-	0/4/15/15	0/2/2/2
2	NAD	B	403	-	-	5/26/62/62	0/5/5/5
2	NAD	A	401	-	-	4/26/62/62	0/5/5/5
5	EDO	B	402	-	-	0/1/1/1	-
3	A1IGQ	B	404	-	-	0/4/15/15	0/2/2/2
3	A1IGQ	A	402[A]	-	-	2/4/15/15	0/2/2/2
4	MRD	B	401	-	-	0/5/5/5	-

All (17) bond length outliers are listed below:

Mol	Chain	Res	Type	Atoms	Z	Observed(Å)	Ideal(Å)
3	A	402[A]	A1IGQ	C3-C2	22.30	1.79	1.54
3	B	404	A1IGQ	C3-C2	22.09	1.79	1.54
3	A	402[B]	A1IGQ	C3-C2	21.76	1.78	1.54
3	B	404	A1IGQ	C1-S1	-5.78	1.70	1.78
3	A	402[A]	A1IGQ	C1-S1	-5.48	1.71	1.78
2	B	403	NAD	C2N-N1N	4.54	1.40	1.35
3	A	402[B]	A1IGQ	C1-S1	-4.30	1.72	1.78
3	A	402[A]	A1IGQ	C3-N1	-3.62	1.39	1.46
3	B	404	A1IGQ	C3-N1	-3.54	1.40	1.46
3	A	402[B]	A1IGQ	C3-N1	-3.10	1.40	1.46
3	A	402[A]	A1IGQ	C5-C4	-2.89	1.34	1.39
3	A	402[A]	A1IGQ	O2-S1	2.41	1.47	1.43
2	B	403	NAD	C8A-N7A	-2.40	1.30	1.34
2	A	401	NAD	C8A-N7A	-2.32	1.30	1.34
2	A	401	NAD	PA-O2A	-2.30	1.44	1.55
3	A	402[B]	A1IGQ	O2-S1	2.28	1.46	1.43
2	B	403	NAD	PA-O2A	-2.14	1.45	1.55

All (12) bond angle outliers are listed below:

Mol	Chain	Res	Type	Atoms	Z	Observed(°)	Ideal(°)
2	A	401	NAD	C6N-N1N-C2N	-4.22	118.13	121.97
3	A	402[A]	A1IGQ	C3-C2-C1	3.99	110.11	104.11
2	B	403	NAD	O2A-PA-O1A	3.86	131.31	112.24
2	B	403	NAD	C6N-N1N-C2N	-3.10	119.15	121.97
2	A	401	NAD	O4D-C1D-C2D	-3.09	102.40	106.93
3	B	404	A1IGQ	C1-C2-C4	-2.68	109.36	114.91
3	A	402[A]	A1IGQ	C9-C4-C5	2.63	121.57	118.29
2	A	401	NAD	C5A-C6A-N6A	2.59	124.29	120.35
2	A	401	NAD	O2A-PA-O1A	2.54	124.81	112.24
3	B	404	A1IGQ	C3-C2-C1	2.15	107.34	104.11
2	A	401	NAD	C2N-N1N-C1D	2.15	123.92	119.14
2	B	403	NAD	C5A-C6A-N6A	2.02	123.42	120.35

There are no chirality outliers.

All (11) torsion outliers are listed below:

Mol	Chain	Res	Type	Atoms
2	A	401	NAD	C5D-O5D-PN-O1N
2	B	403	NAD	C5D-O5D-PN-O1N
3	A	402[A]	A1IGQ	C3-C2-C4-C5
2	A	401	NAD	PA-O3-PN-O5D

*Continued on next page...*



*Continued from previous page...*

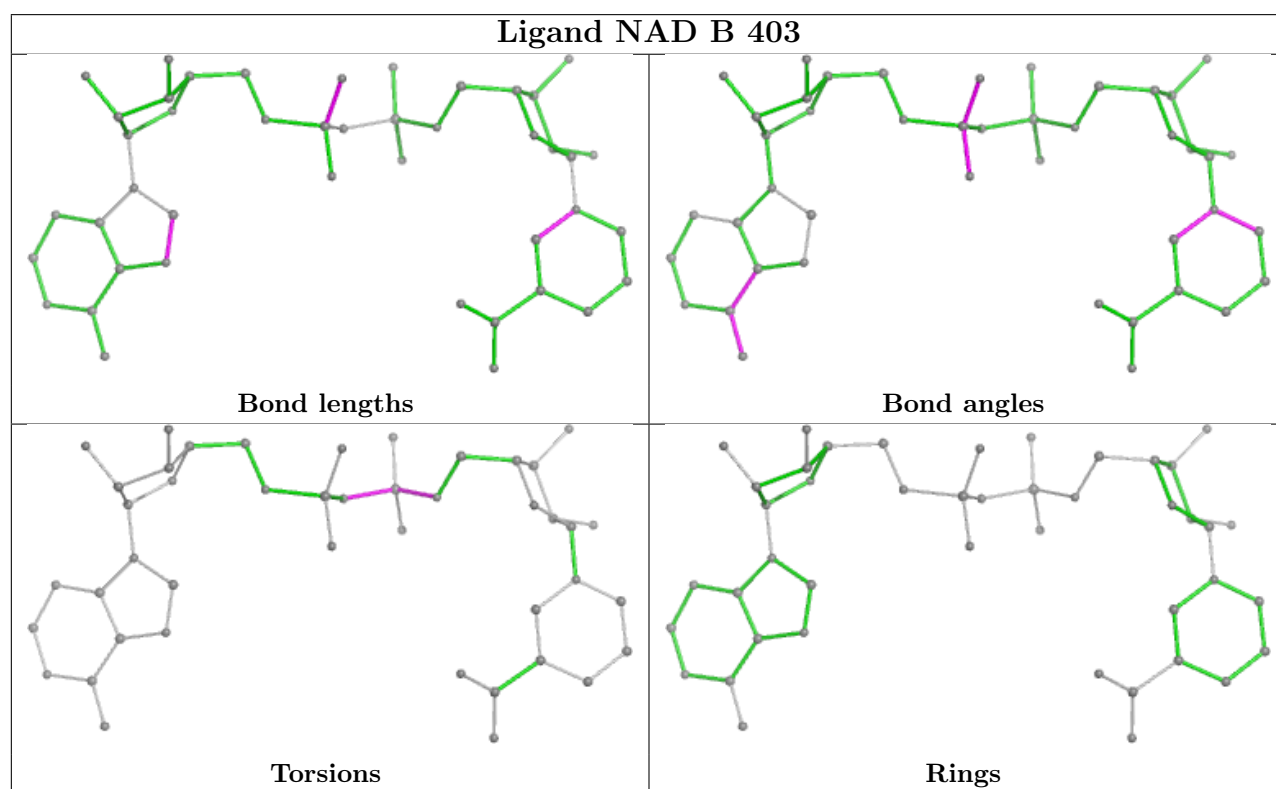
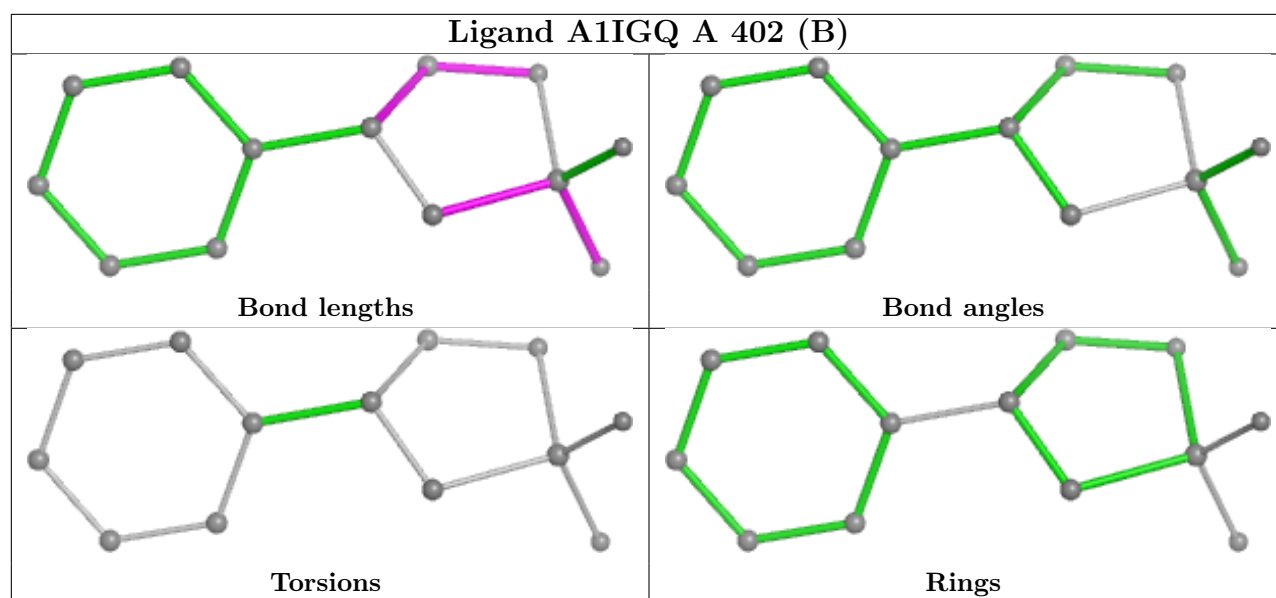
Mol	Chain	Res	Type	Atoms
2	B	403	NAD	PA-O3-PN-O5D
2	A	401	NAD	C5D-O5D-PN-O3
2	B	403	NAD	C5D-O5D-PN-O3
3	A	402[A]	A1IGQ	C3-C2-C4-C9
2	B	403	NAD	C5D-O5D-PN-O2N
2	B	403	NAD	PA-O3-PN-O2N
2	A	401	NAD	C5D-O5D-PN-O2N

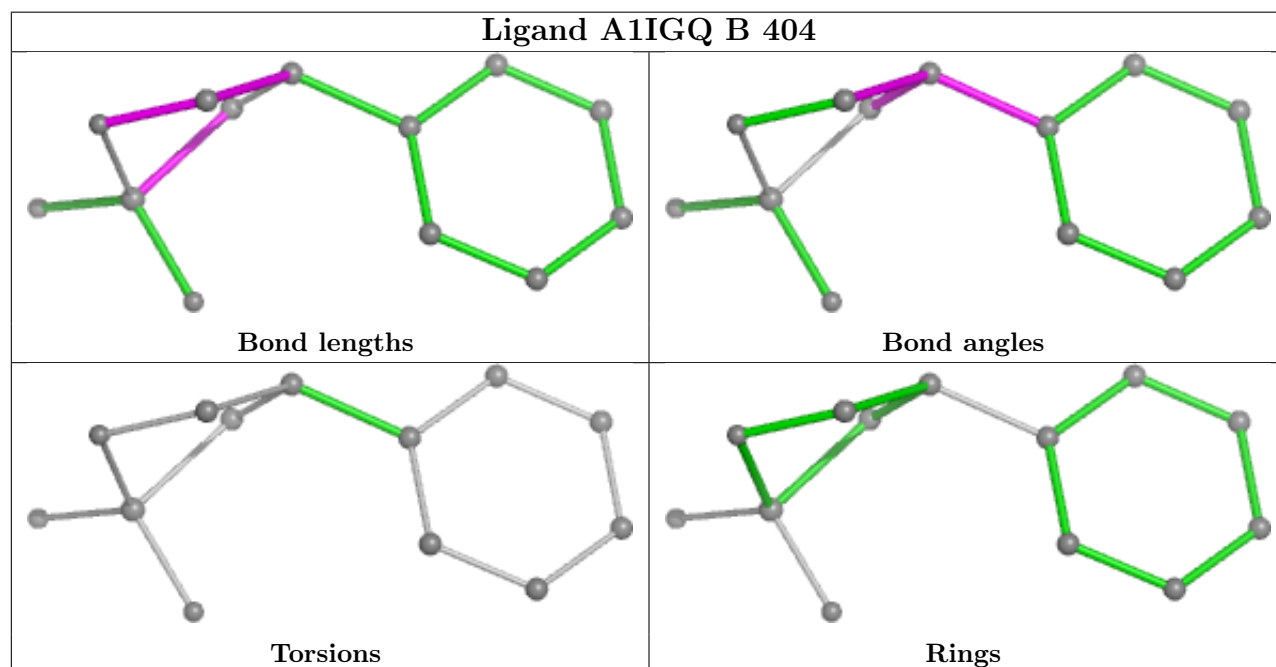
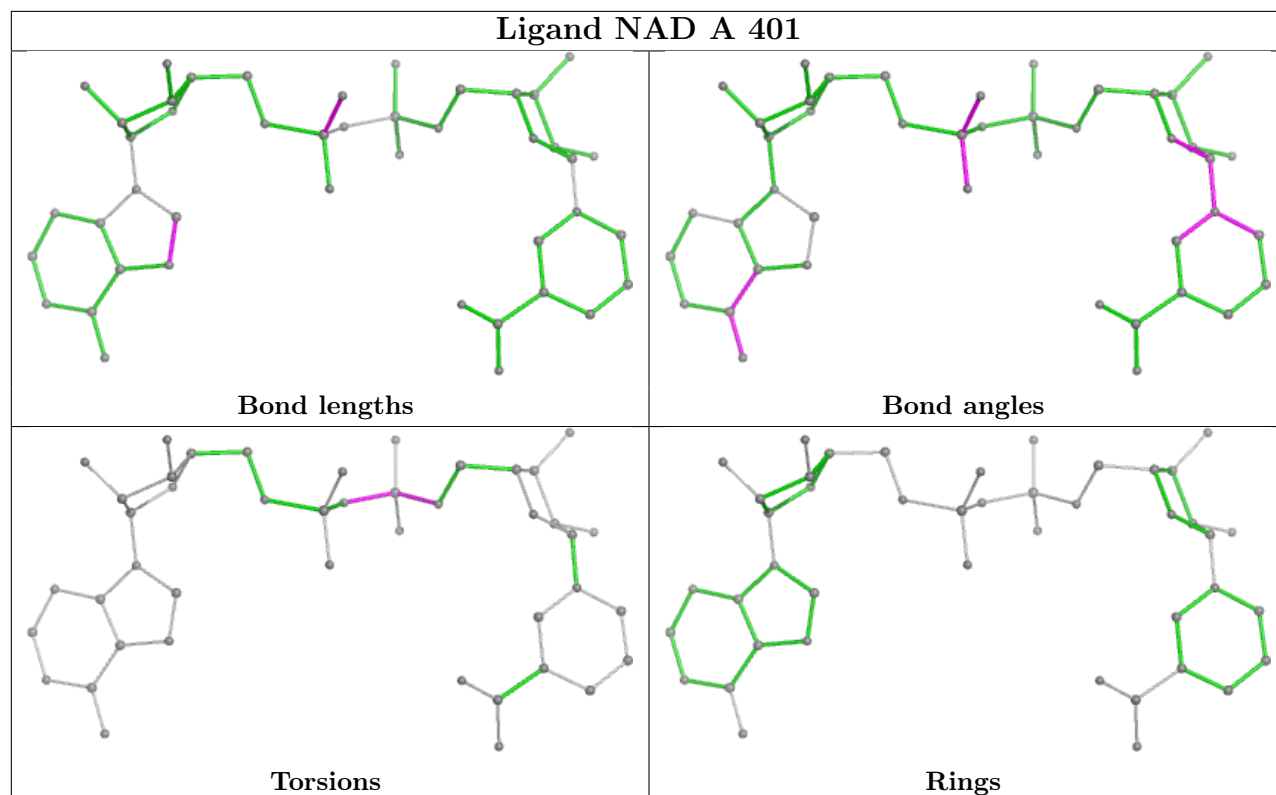
There are no ring outliers.

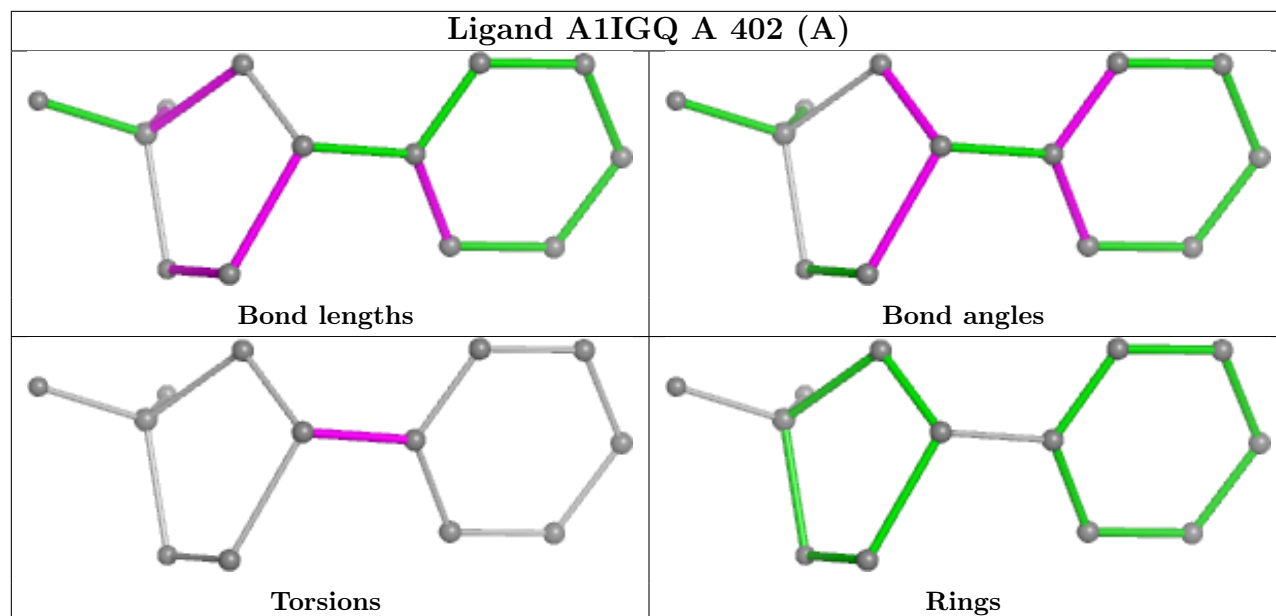
5 monomers are involved in 9 short contacts:

Mol	Chain	Res	Type	Clashes	Symm-Clashes
3	A	402[B]	A1IGQ	2	0
2	B	403	NAD	1	0
5	B	402	EDO	1	0
3	B	404	A1IGQ	1	0
3	A	402[A]	A1IGQ	4	0

The following is a two-dimensional graphical depiction of Mogul quality analysis of bond lengths, bond angles, torsion angles, and ring geometry for all instances of the Ligand of Interest. In addition, ligands with molecular weight > 250 and outliers as shown on the validation Tables will also be included. For torsion angles, if less than 5% of the Mogul distribution of torsion angles is within 10 degrees of the torsion angle in question, then that torsion angle is considered an outlier. Any bond that is central to one or more torsion angles identified as an outlier by Mogul will be highlighted in the graph. For rings, the root-mean-square deviation (RMSD) between the ring in question and similar rings identified by Mogul is calculated over all ring torsion angles. If the average RMSD is greater than 60 degrees and the minimal RMSD between the ring in question and any Mogul-identified rings is also greater than 60 degrees, then that ring is considered an outlier. The outliers are highlighted in purple. The color gray indicates Mogul did not find sufficient equivalents in the CSD to analyse the geometry.







## 5.7 Other polymers [i](#)

There are no such residues in this entry.

## 5.8 Polymer linkage issues [i](#)

There are no chain breaks in this entry.

## 6 Fit of model and data

### 6.1 Protein, DNA and RNA chains

In the following table, the column labelled ‘#RSRZ > 2’ contains the number (and percentage) of RSRZ outliers, followed by percent RSRZ outliers for the chain as percentile scores relative to all X-ray entries and entries of similar resolution. The OWAB column contains the minimum, median, 95<sup>th</sup> percentile and maximum values of the occupancy-weighted average B-factor per residue. The column labelled ‘Q < 0.9’ lists the number of (and percentage) of residues with an average occupancy less than 0.9.

Mol	Chain	Analysed	<RSRZ>	#RSRZ>2	OWAB(Å <sup>2</sup> )	Q<0.9
1	A	335/370 (90%)	0.64	29 (8%) 17 15	13, 30, 56, 112	14 (4%)
1	B	335/370 (90%)	0.54	22 (6%) 26 25	15, 31, 54, 90	10 (2%)
All	All	670/740 (90%)	0.59	51 (7%) 21 19	13, 30, 55, 112	24 (3%)

All (51) RSRZ outliers are listed below:

Mol	Chain	Res	Type	RSRZ
1	A	78	SER	8.5
1	A	26	PRO	6.2
1	A	87	LEU	6.1
1	A	84	HIS	6.0
1	B	123	ASN	5.5
1	A	91	ARG	5.4
1	B	89	GLN	4.9
1	A	24	LEU	4.7
1	A	361	ALA	4.4
1	B	94	LEU	4.2
1	A	362	PHE	4.0
1	A	25	PRO	4.0
1	B	85	ALA	4.0
1	A	77	LEU	3.9
1	B	28	SER	3.9
1	A	363	MET	3.9
1	A	23	THR	3.8
1	A	85	ALA	3.8
1	B	251	LYS	3.7
1	A	274	LYS	3.5
1	A	360	ASP	3.2
1	B	250	TYR	3.2
1	A	159[A]	ARG	3.1
1	B	88	THR	3.1

*Continued on next page...*

*Continued from previous page...*

Mol	Chain	Res	Type	RSRZ
1	B	363	MET	3.0
1	B	93	PRO	3.0
1	A	305	TYR	2.9
1	A	358	LYS	2.7
1	B	192	MET	2.7
1	A	195	ASN	2.5
1	B	90	SER	2.5
1	A	332	VAL	2.5
1	A	359	MET	2.5
1	B	84	HIS	2.4
1	B	196	THR	2.3
1	B	362	PHE	2.3
1	A	76	PRO	2.3
1	A	272	PHE	2.2
1	B	361	ALA	2.2
1	A	196	THR	2.1
1	B	91	ARG	2.1
1	A	354	THR	2.1
1	B	29	THR	2.1
1	A	27	GLU	2.1
1	B	173	ASN	2.1
1	B	200	LYS	2.1
1	A	189[A]	GLN	2.1
1	A	74	LEU	2.1
1	A	275[A]	CYS	2.0
1	B	157[A]	GLU	2.0
1	B	359[A]	MET	2.0

## 6.2 Non-standard residues in protein, DNA, RNA chains [i](#)

In the following table, the Atoms column lists the number of modelled atoms in the group and the number defined in the chemical component dictionary. The B-factors column lists the minimum, median, 95<sup>th</sup> percentile and maximum values of B factors of atoms in the group. The column labelled 'Q< 0.9' lists the number of atoms with occupancy less than 0.9.

Mol	Type	Chain	Res	Atoms	RSCC	RSR	B-factors(Å <sup>2</sup> )	Q<0.9
1	CSS	B	177	7/8	0.91	0.12	40,41,58,95	0
1	CSS	A	177	7/8	0.93	0.10	28,32,45,53	0

### 6.3 Carbohydrates [i](#)

There are no oligosaccharides in this entry.

### 6.4 Ligands [i](#)

In the following table, the Atoms column lists the number of modelled atoms in the group and the number defined in the chemical component dictionary. The B-factors column lists the minimum, median, 95<sup>th</sup> percentile and maximum values of B factors of atoms in the group. The column labelled 'Q< 0.9' lists the number of atoms with occupancy less than 0.9.

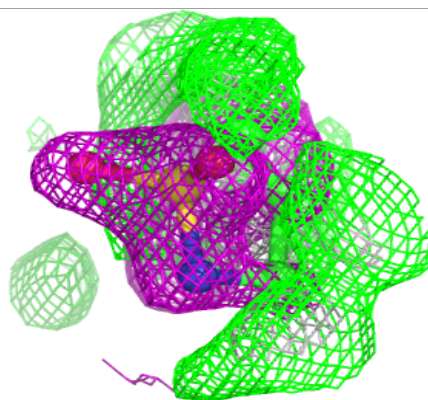
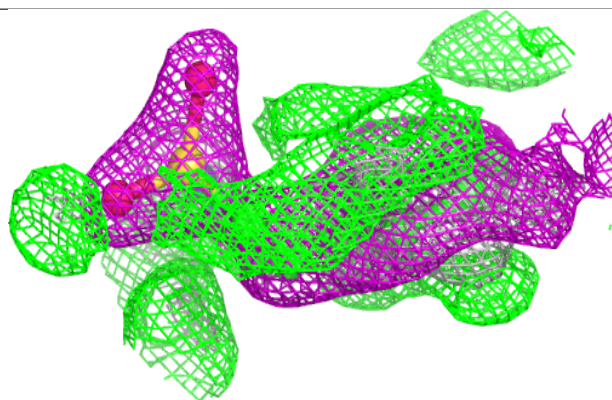
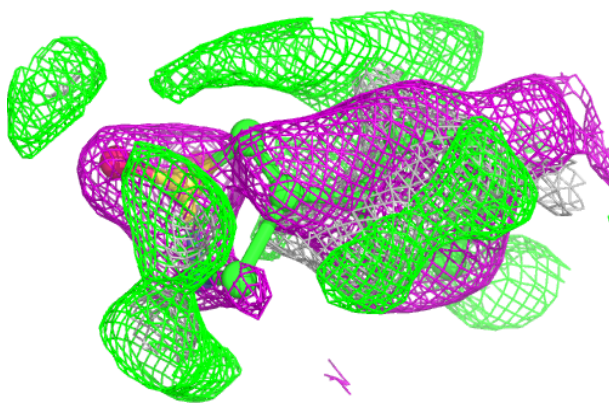
Mol	Type	Chain	Res	Atoms	RSCC	RSR	B-factors( $\text{\AA}^2$ )	Q<0.9
3	A1IGQ	A	402[A]	13/13	0.21	0.29	20,20,20,20	13
3	A1IGQ	A	402[B]	13/13	0.21	0.29	20,20,20,20	13
3	A1IGQ	B	404	13/13	0.28	0.35	20,20,20,20	13
4	MRD	B	401	8/8	0.87	0.23	52,56,59,60	8
5	EDO	B	402	4/4	0.87	0.21	38,39,41,50	4
2	NAD	B	403	44/44	0.98	0.06	21,25,35,38	44
2	NAD	A	401	44/44	0.98	0.06	20,24,33,40	0

The following is a graphical depiction of the model fit to experimental electron density of all instances of the Ligand of Interest. In addition, ligands with molecular weight > 250 and outliers as shown on the geometry validation Tables will also be included. Each fit is shown from different orientation to approximate a three-dimensional view.

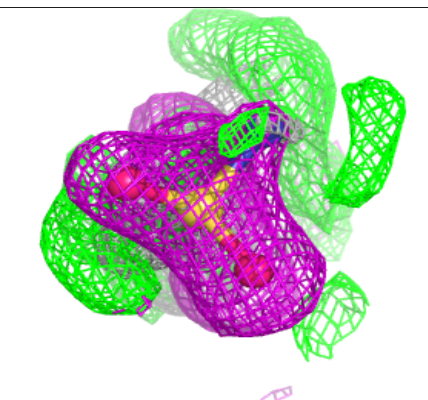
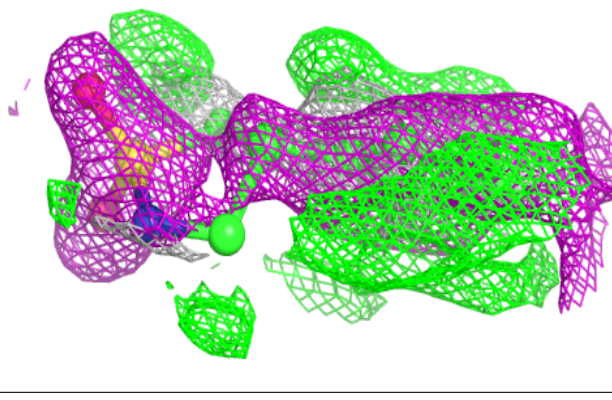
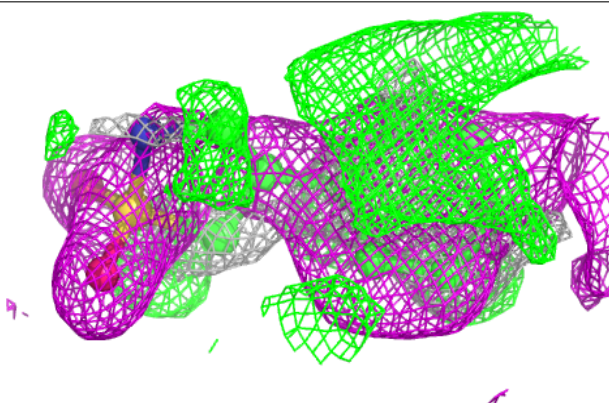


**Electron density around A1IGQ A 402 (A):**

$2mF_o-DF_c$  (at 0.7 rmsd) in gray  
 $mF_o-DF_c$  (at 3 rmsd) in purple (negative)  
and green (positive)

**Electron density around A1IGQ A 402 (B):**

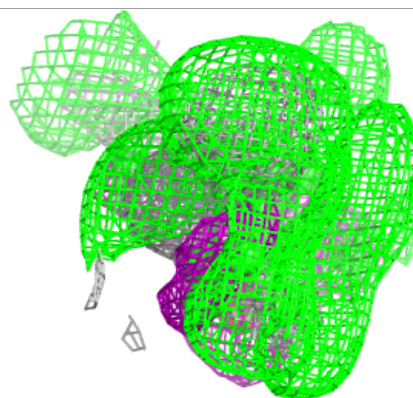
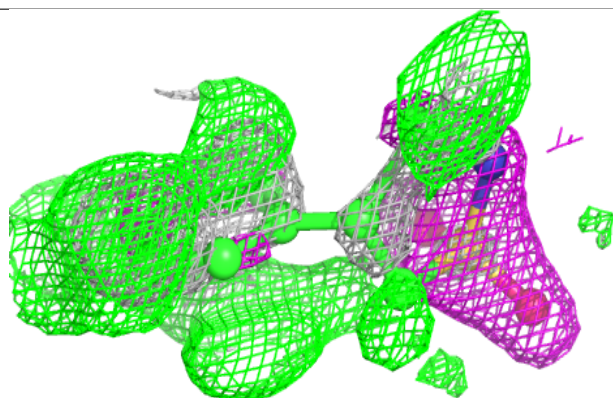
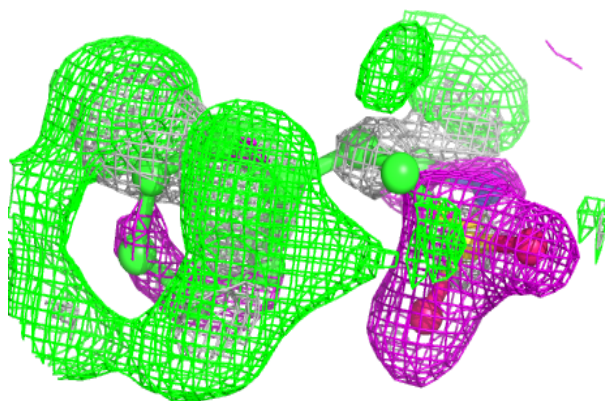
$2mF_o-DF_c$  (at 0.7 rmsd) in gray  
 $mF_o-DF_c$  (at 3 rmsd) in purple (negative)  
and green (positive)



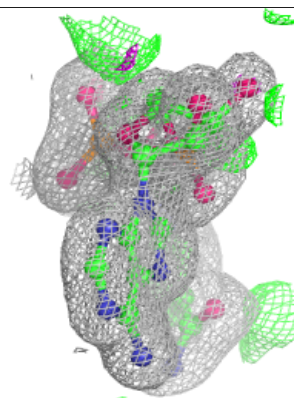
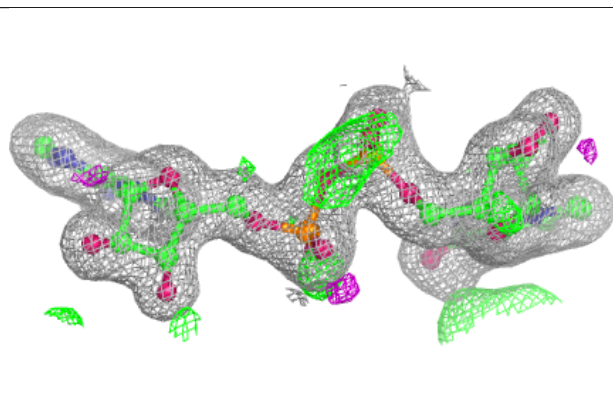
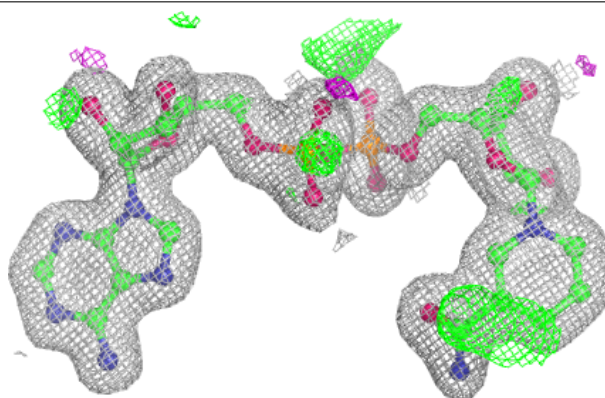


**Electron density around A1IGQ B 404:**

$2mF_o-DF_c$  (at 0.7 rmsd) in gray  
 $mF_o-DF_c$  (at 3 rmsd) in purple (negative)  
and green (positive)

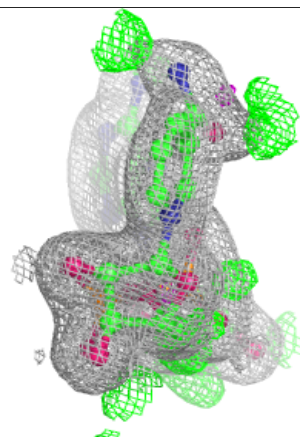
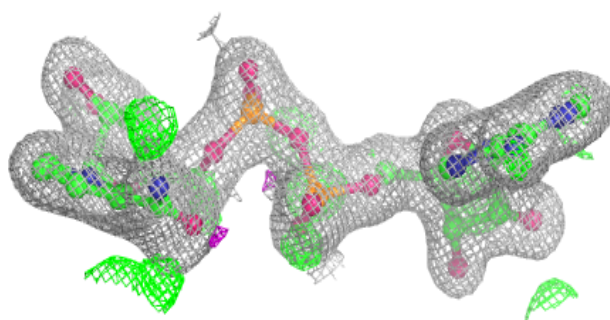
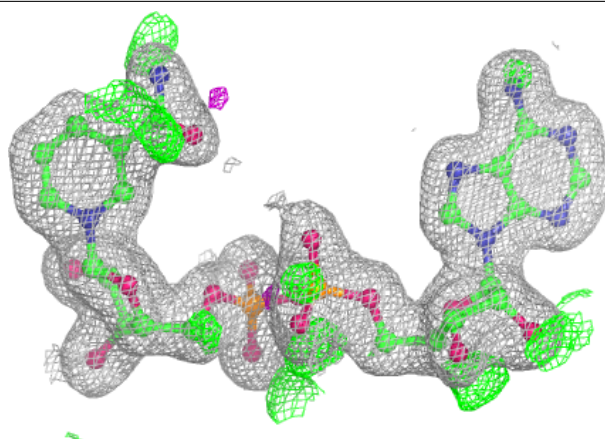
**Electron density around NAD B 403:**

$2mF_o-DF_c$  (at 0.7 rmsd) in gray  
 $mF_o-DF_c$  (at 3 rmsd) in purple (negative)  
and green (positive)



**Electron density around NAD A 401:**

$2mF_o-DF_c$  (at 0.7 rmsd) in gray  
 $mF_o-DF_c$  (at 3 rmsd) in purple (negative)  
and green (positive)



## 6.5 Other polymers [i](#)

There are no such residues in this entry.