



Full wwPDB X-ray Structure Validation Report ⓘ

Jun 15, 2026 – 01:19 pm BST

PDB ID : 9IGH / pdb_00009igh
Title : Structure of human Bcl-xL in complex with small molecule inhibitor
Authors : Dokurno, P.; Novak, T.; Kotschy, A.; Hubbard, R.E.; Davidson, J.; Murray, J.B.
Deposited on : 2025-02-19
Resolution : 1.95 Å(reported)

This is a Full wwPDB X-ray Structure Validation Report for a publicly released PDB entry.

We welcome your comments at validation@mail.wwpdb.org

A user guide is available at

<https://www.wwpdb.org/validation/2017/XrayValidationReportHelp>

with specific help available everywhere you see the ⓘ symbol.

The types of validation reports are described at

<http://www.wwpdb.org/validation/2017/FAQs#types>.

The following versions of software and data (see [references ⓘ](#)) were used in the production of this report:

MolProbity : 4-5-2 with Phenix2.0
Mogul : 1.8.4, CSD as541be (2020)
Xtriage (Phenix) : 2.0
EDS : 3.0
Buster-report : wwPDB partial adaption of 1.1.7 (2018)
Percentile statistics : 20250101.v01 (using entries in the PDB archive January 1st 2025)
CCP4 : 9.0.010 (Gargrove)
Density-Fitness : 1.0.12
Ideal geometry (proteins) : Engh & Huber (2001)
Ideal geometry (DNA, RNA) : Parkinson et al. (1996)
Validation Pipeline (wwPDB-VP) : 2.49

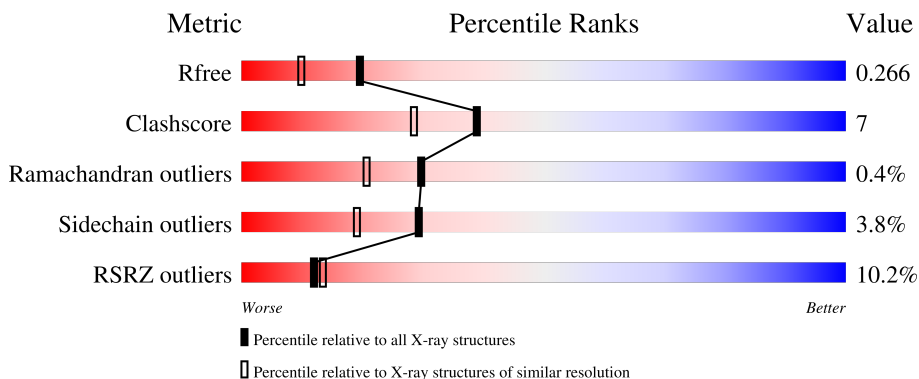
1 Overall quality at a glance

The following experimental techniques were used to determine the structure:

X-RAY DIFFRACTION

The reported resolution of this entry is 1.95 Å.

Percentile scores (ranging between 0-100) for global validation metrics of the entry are shown in the following graphic. The table shows the number of entries on which the scores are based.



Metric	Whole archive (#Entries)	Similar resolution (#Entries, resolution range(Å))
R_{free}	180053	3494 (1.96-1.96)
Clashscore	190562	3612 (1.96-1.96)
Ramachandran outliers	187476	3587 (1.96-1.96)
Sidechain outliers	187428	3587 (1.96-1.96)
RSRZ outliers	180081	3495 (1.96-1.96)

The table below summarises the geometric issues observed across the polymeric chains and their fit to the electron density. The red, orange, yellow and green segments of the lower bar indicate the fraction of residues that contain outliers for ≥ 3 , 2, 1 and 0 types of geometric quality criteria respectively. A grey segment represents the fraction of residues that are not modelled. The numeric value for each fraction is indicated below the corresponding segment, with a dot representing fractions $\leq 5\%$. The upper red bar (where present) indicates the fraction of residues that have poor fit to the electron density. The numeric value is given above the bar.

Mol	Chain	Length	Quality of chain
1	A	159	
1	B	159	

2 Entry composition [i](#)

There are 5 unique types of molecules in this entry. The entry contains 2441 atoms, of which 0 are hydrogens and 0 are deuteriums.

In the tables below, the ZeroOcc column contains the number of atoms modelled with zero occupancy, the AltConf column contains the number of residues with at least one atom in alternate conformation and the Trace column contains the number of residues modelled with at most 2 atoms.

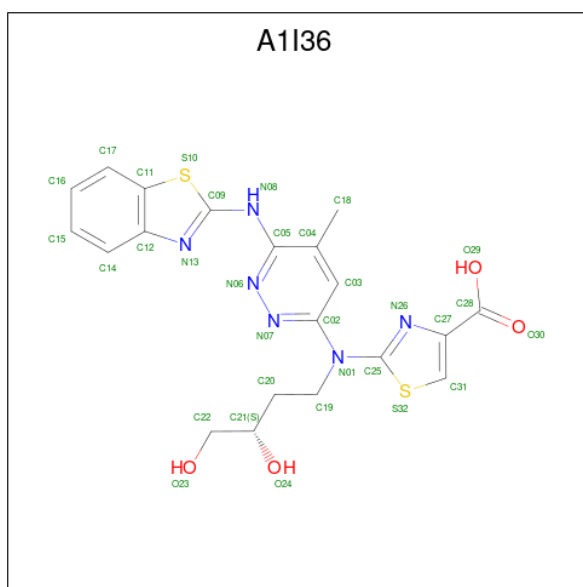
- Molecule 1 is a protein called Apoptosis regulator Bcl-2,Bcl-2-like protein 1.

Mol	Chain	Residues	Atoms					ZeroOcc	AltConf	Trace
			Total	C	N	O	S			
1	A	146	1185	755	203	223	4	0	0	0
1	B	139	1130	723	194	209	4	0	0	0

There are 16 discrepancies between the modelled and reference sequences:

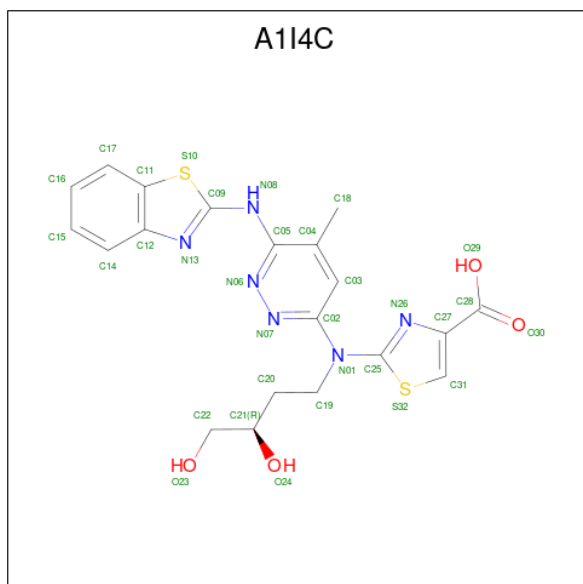
Chain	Residue	Modelled	Actual	Comment	Reference
A	1	GLY	-	expression tag	UNP P10415
A	2	SER	-	expression tag	UNP P10415
A	28	ALA	SER	engineered mutation	UNP Q07817
A	45	VAL	MET	engineered mutation	UNP Q07817
A	114	LEU	ILE	engineered mutation	UNP Q07817
A	121	GLY	GLN	engineered mutation	UNP Q07817
A	124	ALA	GLU	engineered mutation	UNP Q07817
A	125	THR	GLN	engineered mutation	UNP Q07817
B	1	GLY	-	expression tag	UNP P10415
B	2	SER	-	expression tag	UNP P10415
B	28	ALA	SER	engineered mutation	UNP Q07817
B	45	VAL	MET	engineered mutation	UNP Q07817
B	114	LEU	ILE	engineered mutation	UNP Q07817
B	121	GLY	GLN	engineered mutation	UNP Q07817
B	124	ALA	GLU	engineered mutation	UNP Q07817
B	125	THR	GLN	engineered mutation	UNP Q07817

- Molecule 2 is 2-[[6-(1,3-benzothiazol-2-ylamino)-5-methyl-pyridazin-3-yl]-[(3S)-3,4-bis(oxidanyl)butyl]amino]-1,3-thiazole-4-carboxylic acid (CCD ID: A1I36) (formula: C₂₀H₂₀N₆O₄S₂).



Mol	Chain	Residues	Atoms					ZeroOcc	AltConf
			Total	C	N	O	S		
2	A	1	32	20	6	4	2	0	0

- Molecule 3 is 2-[[6-(1,3-benzothiazol-2-ylamino)-5-methyl-pyridazin-3-yl]-[(3R)-3,4-bis(oxidanyl)butyl]amino]-1,3-thiazole-4-carboxylic acid (CCD ID: A1I4C) (formula: C₂₀H₂₀N₆O₄S₂).



Mol	Chain	Residues	Atoms					ZeroOcc	AltConf
			Total	C	N	O	S		
3	B	1	32	20	6	4	2	0	0

- Molecule 4 is CHLORIDE ION (CCD ID: CL) (formula: Cl).

Mol	Chain	Residues	Atoms	ZeroOcc	AltConf
4	B	1	Total Cl 1 1	0	0


- Molecule 5 is water.

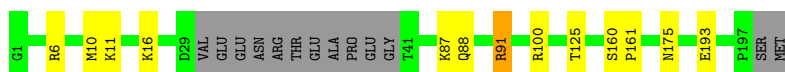
Mol	Chain	Residues	Atoms	ZeroOcc	AltConf
5	A	48	Total O 48 48	0	0
5	B	13	Total O 13 13	0	0

3 Residue-property plots [i](#)

These plots are drawn for all protein, RNA, DNA and oligosaccharide chains in the entry. The first graphic for a chain summarises the proportions of the various outlier classes displayed in the second graphic. The second graphic shows the sequence view annotated by issues in geometry and electron density. Residues are color-coded according to the number of geometric quality criteria for which they contain at least one outlier: green = 0, yellow = 1, orange = 2 and red = 3 or more. A red dot above a residue indicates a poor fit to the electron density ($RSRZ > 2$). Stretches of 2 or more consecutive residues without any outlier are shown as a green connector. Residues present in the sample, but not in the model, are shown in grey.

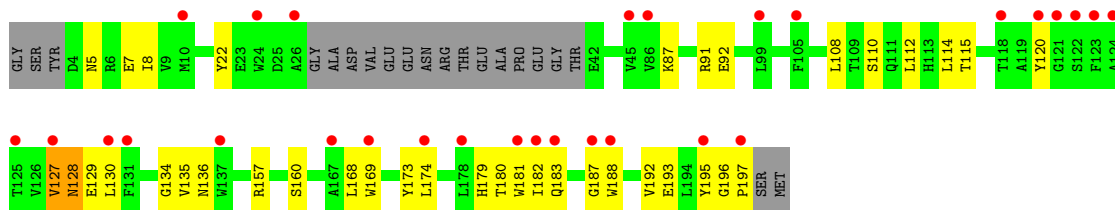
- Molecule 1: Apoptosis regulator Bcl-2,Bcl-2-like protein 1

Chain A: 



- Molecule 1: Apoptosis regulator Bcl-2,Bcl-2-like protein 1

Chain B: 



4 Data and refinement statistics

Property	Value	Source
Space group	P 1 21 1	Depositor
Cell constants a, b, c, α , β , γ	33.62Å 68.24Å 60.05Å 90.00° 96.21° 90.00°	Depositor
Resolution (Å)	25.00 – 1.95 25.00 – 1.95	Depositor EDS
% Data completeness (in resolution range)	98.4 (25.00-1.95) 98.4 (25.00-1.95)	Depositor EDS
R_{merge}	0.07	Depositor
R_{sym}	(Not available)	Depositor
$\langle I/\sigma(I) \rangle$ ¹	1.96 (at 1.95Å)	Xtrriage
Refinement program	REFMAC 5.8.0425	Depositor
R, R_{free}	0.215 , 0.258 0.224 , 0.266	Depositor DCC
R_{free} test set	938 reflections (4.83%)	wwPDB-VP
Wilson B-factor (Å ²)	31.2	Xtrriage
Anisotropy	0.339	Xtrriage
Bulk solvent k_{sol} (e/Å ³), B_{sol} (Å ²)	0.34 , 44.8	EDS
L-test for twinning ²	$\langle L \rangle = 0.48$, $\langle L^2 \rangle = 0.31$	Xtrriage
Estimated twinning fraction	No twinning to report.	Xtrriage
F_o, F_c correlation	0.95	EDS
Total number of atoms	2441	wwPDB-VP
Average B, all atoms (Å ²)	48.0	wwPDB-VP

Xtrriage's analysis on translational NCS is as follows: *The largest off-origin peak in the Patterson function is 7.28% of the height of the origin peak. No significant pseudotranslation is detected.*

¹Intensities estimated from amplitudes.

²Theoretical values of $\langle |L| \rangle$, $\langle L^2 \rangle$ for acentric reflections are 0.5, 0.333 respectively for untwinned datasets, and 0.375, 0.2 for perfectly twinned datasets.

5 Model quality [i](#)

5.1 Standard geometry [i](#)

Bond lengths and bond angles in the following residue types are not validated in this section: A1I4C, A1I36, CL

The Z score for a bond length (or angle) is the number of standard deviations the observed value is removed from the expected value. A bond length (or angle) with $|Z| > 5$ is considered an outlier worth inspection. RMSZ is the root-mean-square of all Z scores of the bond lengths (or angles).

Mol	Chain	Bond lengths		Bond angles	
		RMSZ	# Z >5	RMSZ	# Z >5
1	A	0.64	0/1216	1.07	1/1648 (0.1%)
1	B	0.56	0/1159	1.19	4/1571 (0.3%)
All	All	0.60	0/2375	1.13	5/3219 (0.2%)

Chiral center outliers are detected by calculating the chiral volume of a chiral center and verifying if the center is modelled as a planar moiety or with the opposite hand. A planarity outlier is detected by checking planarity of atoms in a peptide group, atoms in a mainchain group or atoms of a sidechain that are expected to be planar.

Mol	Chain	#Chirality outliers	#Planarity outliers
1	A	0	2
1	B	0	2
All	All	0	4

There are no bond length outliers.

All (5) bond angle outliers are listed below:

Mol	Chain	Res	Type	Atoms	Z	Observed(°)	Ideal(°)
1	B	195	TYR	CB-CA-C	-6.75	99.03	110.64
1	A	125	THR	CA-CB-OG1	-6.34	100.09	109.60
1	B	128	ASN	N-CA-C	-5.49	107.23	114.04
1	B	168	LEU	N-CA-CB	-5.19	102.89	110.47
1	B	168	LEU	CB-CA-C	5.05	118.08	109.24

There are no chirality outliers.

All (4) planarity outliers are listed below:

Mol	Chain	Res	Type	Group
1	A	100	ARG	Sidechain

Continued on next page...

Continued from previous page...

Mol	Chain	Res	Type	Group
1	A	91	ARG	Sidechain
1	B	157	ARG	Sidechain
1	B	91	ARG	Sidechain

5.2 Too-close contacts [i](#)

In the following table, the Non-H and H(model) columns list the number of non-hydrogen atoms and hydrogen atoms in the chain respectively. The H(added) column lists the number of hydrogen atoms added and optimized by MolProbity. The Clashes column lists the number of clashes within the asymmetric unit, whereas Symm-Clashes lists symmetry-related clashes.

Mol	Chain	Non-H	H(model)	H(added)	Clashes	Symm-Clashes
1	A	1185	0	1112	7	0
1	B	1130	0	1064	21	0
2	A	32	0	0	2	0
3	B	32	0	0	2	0
4	B	1	0	0	0	0
5	A	48	0	0	3	1
5	B	13	0	0	5	1
All	All	2441	0	2176	31	1

The all-atom clashscore is defined as the number of clashes found per 1000 atoms (including hydrogen atoms). The all-atom clashscore for this structure is 7.

All (31) close contacts within the same asymmetric unit are listed below, sorted by their clash magnitude.

Atom-1	Atom-2	Interatomic distance (Å)	Clash overlap (Å)
2:A:201:A1I36:S32	2:A:201:A1I36:N07	2.72	0.63
1:B:127:VAL:O	1:B:127:VAL:HG12	1.99	0.61
1:B:22:TYR:OH	1:B:160:SER:OG	1.99	0.61
1:A:11:LYS:HB3	1:A:87:LYS:HD3	1.84	0.60
1:B:136:ASN:HA	1:B:181:TRP:CZ2	2.37	0.58
3:B:201:A1I4C:N06	3:B:201:A1I4C:S10	2.78	0.56
2:A:201:A1I36:N06	2:A:201:A1I36:S10	2.78	0.56
1:B:197:PRO:HA	5:B:312:HOH:O	2.10	0.52
1:B:128:ASN:ND2	1:B:173:TYR:OH	2.43	0.51
1:A:6:ARG:O	1:A:10:MET:HG2	2.12	0.50
1:B:196:GLY:N	5:B:301:HOH:O	2.41	0.50
1:B:135:VAL:HB	1:B:181:TRP:CD1	2.48	0.49
1:B:196:GLY:CA	5:B:301:HOH:O	2.61	0.48

Continued on next page...

Continued from previous page...

Atom-1	Atom-2	Interatomic distance (Å)	Clash overlap (Å)
1:A:160:SER:N	1:A:161:PRO:CD	2.77	0.47
3:B:201:A1I4C:N07	3:B:201:A1I4C:S32	2.88	0.47
1:B:120:TYR:HB2	1:B:169:TRP:CD1	2.51	0.46
1:A:91:ARG:NH2	1:B:134:GLY:HA2	2.30	0.46
5:A:307:HOH:O	1:B:180:THR:HG21	2.16	0.45
1:B:182:ILE:HG22	1:B:187:GLY:HA2	1.98	0.45
1:B:179:HIS:HA	1:B:182:ILE:HD12	1.98	0.45
1:B:7:GLU:O	1:B:8:ILE:C	2.60	0.45
1:B:187:GLY:N	5:B:304:HOH:O	2.51	0.44
1:B:188:TRP:O	1:B:192:VAL:HG23	2.18	0.43
1:A:16:LYS:HE2	5:A:320:HOH:O	2.18	0.43
1:B:5:ASN:HB3	1:B:174:LEU:HD23	2.01	0.42
1:A:175:ASN:OD1	5:A:301:HOH:O	2.22	0.42
1:B:108:LEU:HD21	1:B:129:GLU:HB2	2.02	0.42
1:A:10:MET:HA	1:A:10:MET:HE2	2.02	0.42
1:B:174:LEU:HD12	1:B:174:LEU:HA	1.90	0.41
1:B:183:GLN:HA	5:B:304:HOH:O	2.21	0.41
1:B:112:LEU:HA	1:B:112:LEU:HD23	1.79	0.40

All (1) symmetry-related close contacts are listed below. The label for Atom-2 includes the symmetry operator and encoded unit-cell translations to be applied.

Atom-1	Atom-2	Interatomic distance (Å)	Clash overlap (Å)
5:A:346:HOH:O	5:B:309:HOH:O[1_455]	2.15	0.05

5.3 Torsion angles [i](#)

5.3.1 Protein backbone [i](#)

In the following table, the Percentiles column shows the percent Ramachandran outliers of the chain as a percentile score with respect to all X-ray entries followed by that with respect to entries of similar resolution.

The Analysed column shows the number of residues for which the backbone conformation was analysed, and the total number of residues.

Mol	Chain	Analysed	Favoured	Allowed	Outliers	Percentiles
1	A	142/159 (89%)	140 (99%)	2 (1%)	0	100 100
1	B	135/159 (85%)	125 (93%)	9 (7%)	1 (1%)	18 10

Continued on next page...

Continued from previous page...

Mol	Chain	Analysed	Favoured	Allowed	Outliers	Percentiles
All	All	277/318 (87%)	265 (96%)	11 (4%)	1 (0%)	30 21

All (1) Ramachandran outliers are listed below:

Mol	Chain	Res	Type
1	B	127	VAL

5.3.2 Protein sidechains [i](#)

In the following table, the Percentiles column shows the percent sidechain outliers of the chain as a percentile score with respect to all X-ray entries followed by that with respect to entries of similar resolution.

The Analysed column shows the number of residues for which the sidechain conformation was analysed, and the total number of residues.

Mol	Chain	Analysed	Rotameric	Outliers	Percentiles
1	A	122/133 (92%)	120 (98%)	2 (2%)	55 52
1	B	116/133 (87%)	109 (94%)	7 (6%)	17 7
All	All	238/266 (90%)	229 (96%)	9 (4%)	29 19

All (9) residues with a non-rotameric sidechain are listed below:

Mol	Chain	Res	Type
1	A	88	GLN
1	A	193	GLU
1	B	87	LYS
1	B	92	GLU
1	B	110	SER
1	B	114	LEU
1	B	115	THR
1	B	130	LEU
1	B	193	GLU

Sometimes sidechains can be flipped to improve hydrogen bonding and reduce clashes. All (6) such sidechains are listed below:

Mol	Chain	Res	Type
1	A	88	GLN
1	A	128	ASN
1	A	175	ASN

Continued on next page...

Continued from previous page...

Mol	Chain	Res	Type
1	B	128	ASN
1	B	165	ASN
1	B	179	HIS

5.3.3 RNA [i](#)

There are no RNA molecules in this entry.

5.4 Non-standard residues in protein, DNA, RNA chains [i](#)

There are no non-standard protein/DNA/RNA residues in this entry.

5.5 Carbohydrates [i](#)

There are no oligosaccharides in this entry.

5.6 Ligand geometry [i](#)

Of 3 ligands modelled in this entry, 1 is monoatomic - leaving 2 for Mogul analysis.

In the following table, the Counts columns list the number of bonds (or angles) for which Mogul statistics could be retrieved, the number of bonds (or angles) that are observed in the model and the number of bonds (or angles) that are defined in the Chemical Component Dictionary. The Link column lists molecule types, if any, to which the group is linked. The Z score for a bond length (or angle) is the number of standard deviations the observed value is removed from the expected value. A bond length (or angle) with $|Z| > 2$ is considered an outlier worth inspection. RMSZ is the root-mean-square of all Z scores of the bond lengths (or angles).

Mol	Type	Chain	Res	Link	Bond lengths			Bond angles		
					Counts	RMSZ	# Z > 2	Counts	RMSZ	# Z > 2
2	A1I36	A	201	-	35,35,35	1.55	6 (17%)	39,49,49	2.06	11 (28%)
3	A1I4C	B	201	-	35,35,35	1.39	6 (17%)	39,49,49	2.11	9 (23%)

In the following table, the Chirals column lists the number of chiral outliers, the number of chiral centers analysed, the number of these observed in the model and the number defined in the Chemical Component Dictionary. Similar counts are reported in the Torsion and Rings columns. '-' means no outliers of that kind were identified.

Mol	Type	Chain	Res	Link	Chirals	Torsions	Rings
2	A1I36	A	201	-	-	3/23/23/23	0/4/4/4

Continued on next page...

Continued from previous page...

Mol	Type	Chain	Res	Link	Chirals	Torsions	Rings
3	A1I4C	B	201	-	-	1/23/23/23	0/4/4/4

All (12) bond length outliers are listed below:

Mol	Chain	Res	Type	Atoms	Z	Observed(Å)	Ideal(Å)
3	B	201	A1I4C	C25-S32	4.16	1.82	1.74
2	A	201	A1I36	C09-N08	3.67	1.42	1.36
2	A	201	A1I36	C18-C04	3.37	1.57	1.51
2	A	201	A1I36	C11-S10	-2.96	1.68	1.74
2	A	201	A1I36	C31-S32	-2.77	1.65	1.72
2	A	201	A1I36	C27-C28	2.56	1.50	1.48
3	B	201	A1I4C	C09-N13	2.38	1.35	1.30
3	B	201	A1I4C	C31-S32	-2.37	1.66	1.72
3	B	201	A1I4C	C12-N13	-2.31	1.35	1.39
2	A	201	A1I36	C25-S32	2.12	1.78	1.74
3	B	201	A1I4C	C31-C27	2.03	1.39	1.36
3	B	201	A1I4C	O30-C28	2.01	1.28	1.22

All (20) bond angle outliers are listed below:

Mol	Chain	Res	Type	Atoms	Z	Observed(°)	Ideal(°)
3	B	201	A1I4C	S32-C25-N01	7.68	129.73	122.57
3	B	201	A1I4C	S32-C25-N26	-5.64	108.66	116.32
2	A	201	A1I36	S32-C25-N01	5.20	127.42	122.57
2	A	201	A1I36	S32-C25-N26	-5.06	109.46	116.32
2	A	201	A1I36	S10-C09-N13	-4.37	112.90	117.12
3	B	201	A1I4C	C05-N08-C09	-4.30	121.63	126.45
2	A	201	A1I36	C25-N26-C27	3.73	115.90	106.70
2	A	201	A1I36	C05-N08-C09	-3.61	122.40	126.45
3	B	201	A1I4C	S10-C09-N13	-3.53	113.71	117.12
2	A	201	A1I36	O29-C28-C27	3.17	118.65	113.42
3	B	201	A1I4C	C25-N26-C27	2.97	114.05	106.70
2	A	201	A1I36	C03-C02-N07	-2.78	119.67	123.83
3	B	201	A1I4C	C03-C02-N07	-2.66	119.85	123.83
2	A	201	A1I36	C31-C27-N26	-2.45	112.00	115.45
2	A	201	A1I36	N01-C25-N26	2.25	123.01	120.88
3	B	201	A1I4C	C12-N13-C09	2.23	113.85	108.49
3	B	201	A1I4C	O29-C28-C27	2.21	117.06	113.42
2	A	201	A1I36	C02-N07-N06	2.13	121.15	118.97
2	A	201	A1I36	C19-N01-C02	2.04	121.33	117.96
3	B	201	A1I4C	C02-N07-N06	2.00	121.02	118.97

There are no chirality outliers.

All (4) torsion outliers are listed below:

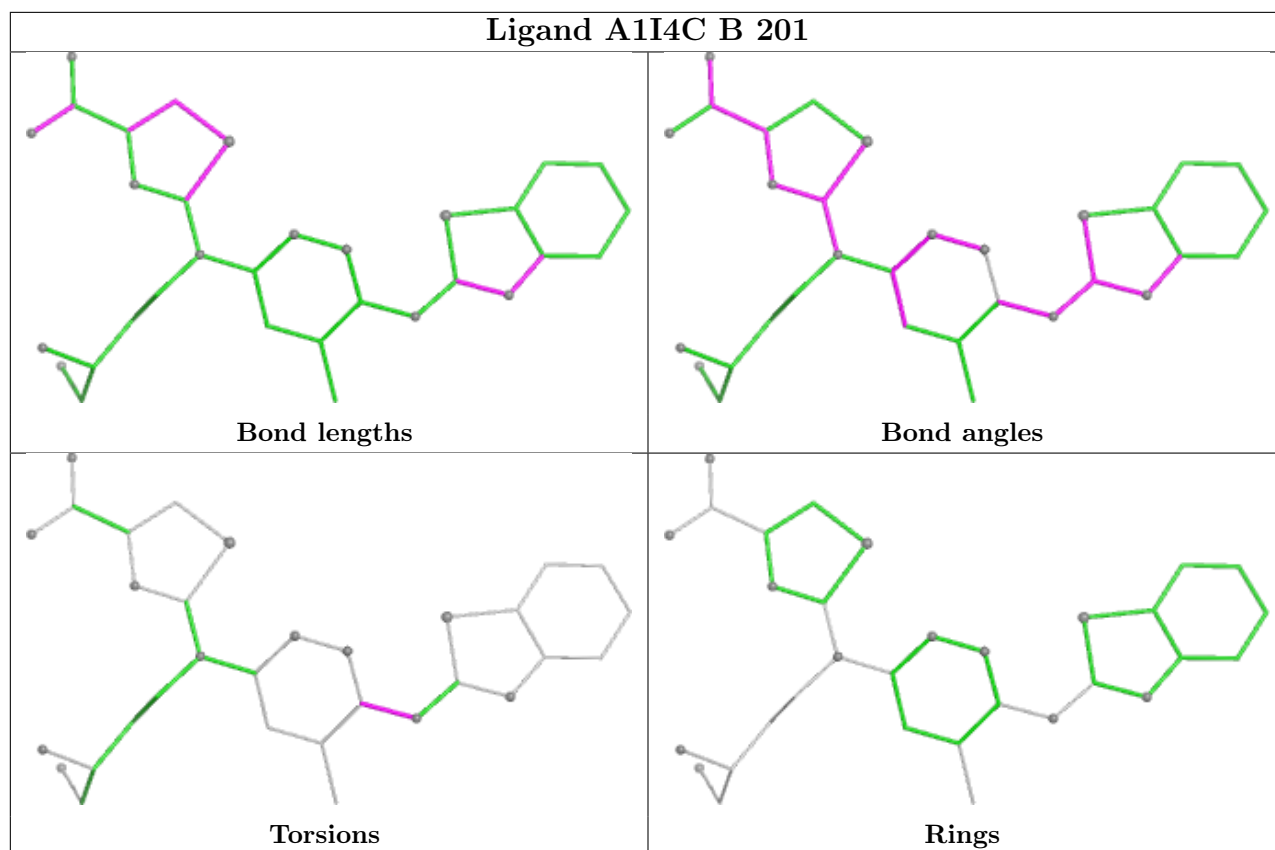
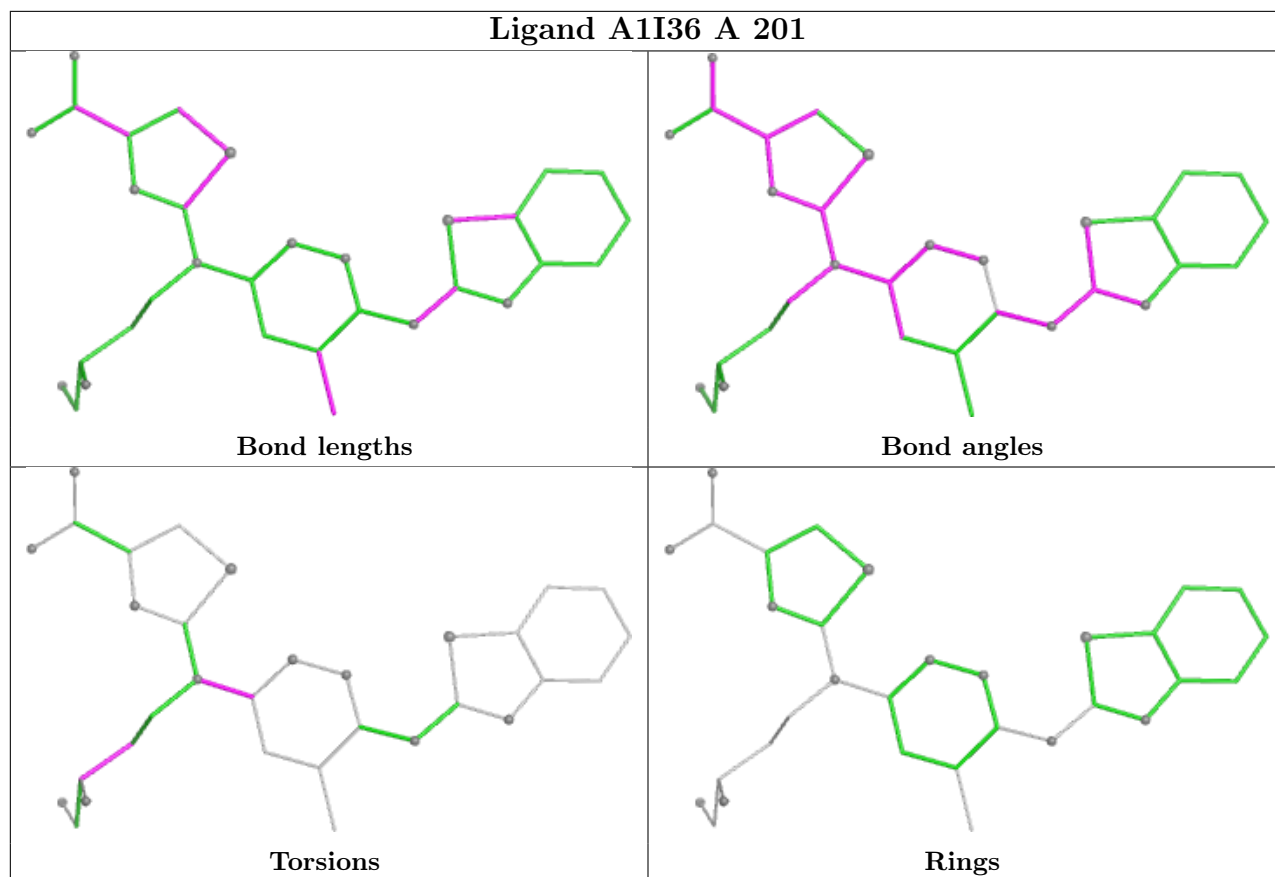
Mol	Chain	Res	Type	Atoms
2	A	201	A1I36	C19-C20-C21-O24
3	B	201	A1I4C	N06-C05-N08-C09
2	A	201	A1I36	N07-C02-N01-C25
2	A	201	A1I36	C03-C02-N01-C25

There are no ring outliers.

2 monomers are involved in 4 short contacts:

Mol	Chain	Res	Type	Clashes	Symm-Clashes
2	A	201	A1I36	2	0
3	B	201	A1I4C	2	0

The following is a two-dimensional graphical depiction of Mogul quality analysis of bond lengths, bond angles, torsion angles, and ring geometry for all instances of the Ligand of Interest. In addition, ligands with molecular weight > 250 and outliers as shown on the validation Tables will also be included. For torsion angles, if less than 5% of the Mogul distribution of torsion angles is within 10 degrees of the torsion angle in question, then that torsion angle is considered an outlier. Any bond that is central to one or more torsion angles identified as an outlier by Mogul will be highlighted in the graph. For rings, the root-mean-square deviation (RMSD) between the ring in question and similar rings identified by Mogul is calculated over all ring torsion angles. If the average RMSD is greater than 60 degrees and the minimal RMSD between the ring in question and any Mogul-identified rings is also greater than 60 degrees, then that ring is considered an outlier. The outliers are highlighted in purple. The color gray indicates Mogul did not find sufficient equivalents in the CSD to analyse the geometry.



5.7 Other polymers [i](#)

There are no such residues in this entry.

5.8 Polymer linkage issues [i](#)

There are no chain breaks in this entry.

6 Fit of model and data

6.1 Protein, DNA and RNA chains

In the following table, the column labelled ‘#RSRZ > 2’ contains the number (and percentage) of RSRZ outliers, followed by percent RSRZ outliers for the chain as percentile scores relative to all X-ray entries and entries of similar resolution. The OWAB column contains the minimum, median, 95th percentile and maximum values of the occupancy-weighted average B-factor per residue. The column labelled ‘Q < 0.9’ lists the number of (and percentage) of residues with an average occupancy less than 0.9.

Mol	Chain	Analysed	<RSRZ>	#RSRZ>2	OWAB(Å ²)	Q<0.9
1	A	146/159 (91%)	0.03	0 100 100	20, 33, 55, 77	0
1	B	139/159 (87%)	1.26	29 (20%) 2 2	32, 63, 83, 105	0
All	All	285/318 (89%)	0.63	29 (10%) 12 13	20, 45, 78, 105	0

All (29) RSRZ outliers are listed below:

Mol	Chain	Res	Type	RSRZ
1	B	120	TYR	5.1
1	B	130	LEU	3.6
1	B	137	TRP	3.4
1	B	188	TRP	3.4
1	B	127	VAL	3.4
1	B	105	PHE	3.3
1	B	125	THR	3.3
1	B	181	TRP	3.3
1	B	124	ALA	3.1
1	B	182	ILE	3.0
1	B	178	LEU	2.9
1	B	10	MET	2.9
1	B	131	PHE	2.8
1	B	174	LEU	2.8
1	B	169	TRP	2.7
1	B	197	PRO	2.6
1	B	26	ALA	2.6
1	B	195	TYR	2.5
1	B	123	PHE	2.4
1	B	121	GLY	2.4
1	B	99	LEU	2.3
1	B	24	TRP	2.2
1	B	86	VAL	2.2
1	B	167	ALA	2.2

Continued on next page...

Continued from previous page...

Mol	Chain	Res	Type	RSRZ
1	B	118	THR	2.2
1	B	45	VAL	2.1
1	B	122	SER	2.0
1	B	187	GLY	2.0
1	B	183	GLN	2.0

6.2 Non-standard residues in protein, DNA, RNA chains [i](#)

There are no non-standard protein/DNA/RNA residues in this entry.

6.3 Carbohydrates [i](#)

There are no oligosaccharides in this entry.

6.4 Ligands [i](#)

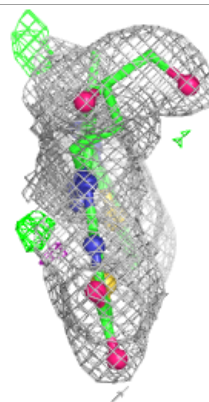
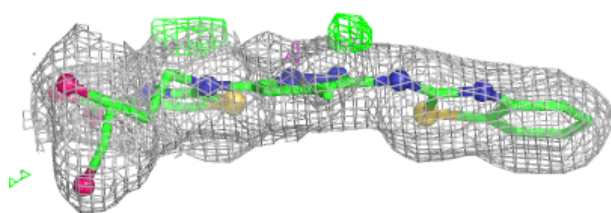
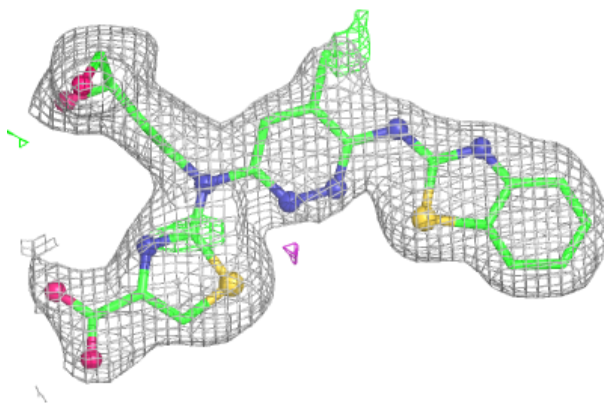
In the following table, the Atoms column lists the number of modelled atoms in the group and the number defined in the chemical component dictionary. The B-factors column lists the minimum, median, 95th percentile and maximum values of B factors of atoms in the group. The column labelled 'Q< 0.9' lists the number of atoms with occupancy less than 0.9.

Mol	Type	Chain	Res	Atoms	RSCC	RSR	B-factors(Å ²)	Q<0.9
3	A1I4C	B	201	32/32	0.91	0.10	40,53,75,80	0
4	CL	B	202	1/1	0.96	0.06	61,61,61,61	0
2	A1I36	A	201	32/32	0.97	0.06	22,25,38,43	0

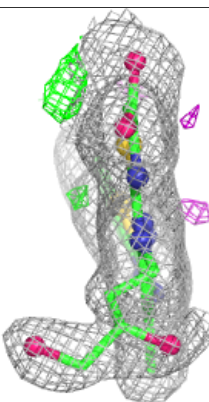
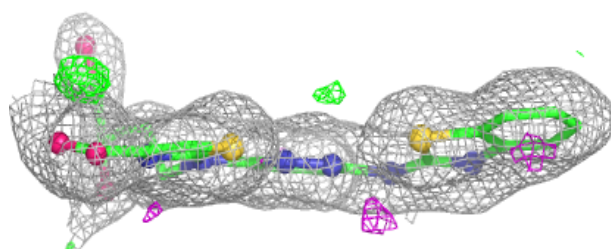
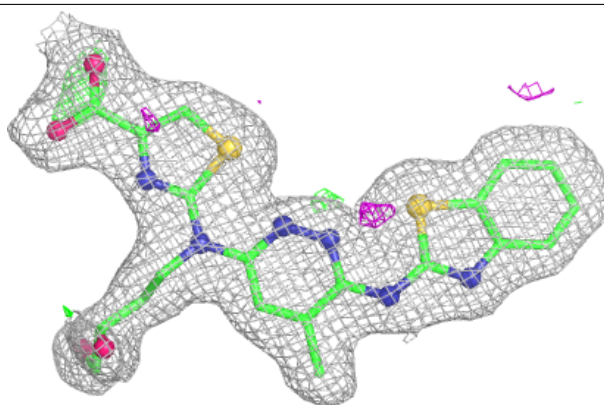
The following is a graphical depiction of the model fit to experimental electron density of all instances of the Ligand of Interest. In addition, ligands with molecular weight > 250 and outliers as shown on the geometry validation Tables will also be included. Each fit is shown from different orientation to approximate a three-dimensional view.

Electron density around A1I4C B 201:

$2mF_o-DF_c$ (at 0.7 rmsd) in gray
 mF_o-DF_c (at 3 rmsd) in purple (negative)
and green (positive)

**Electron density around A1I36 A 201:**

$2mF_o-DF_c$ (at 0.7 rmsd) in gray
 mF_o-DF_c (at 3 rmsd) in purple (negative)
and green (positive)



6.5 Other polymers [i](#)

There are no such residues in this entry.