



Full wwPDB EM Validation Report ⓘ

Dec 29, 2025 – 07:57 PM JST

PDB ID : 9LCP / pdb_00009lcp
EMDB ID : EMD-62989
Title : PvdL-E2-C3-A3 in complex with MLP (NRPS cross-module)
Authors : Wei, C.; Jialiang, W.; Zhijun, W.
Deposited on : 2025-01-05
Resolution : 3.76 Å(reported)

This is a Full wwPDB EM Validation Report for a publicly released PDB entry.

We welcome your comments at validation@mail.wwpdb.org

A user guide is available at

<https://www.wwpdb.org/validation/2017/EMValidationReportHelp>

with specific help available everywhere you see the ⓘ symbol.

The types of validation reports are described at

<http://www.wwpdb.org/validation/2017/FAQs#types>.

The following versions of software and data (see [references ⓘ](#)) were used in the production of this report:

EMDB validation analysis : 0.0.1.dev129
MolProbity : 4-5-2 with Phenix2.0
Percentile statistics : 20231227.v01 (using entries in the PDB archive December 27th 2023)
EM percentile statistics : 202505.v01 (Using data in the EMDb archive up until May 2025)
MapQ : 1.9.13
Ideal geometry (proteins) : Engh & Huber (2001)
Ideal geometry (DNA, RNA) : Parkinson et al. (1996)
Validation Pipeline (wwPDB-VP) : 2.47

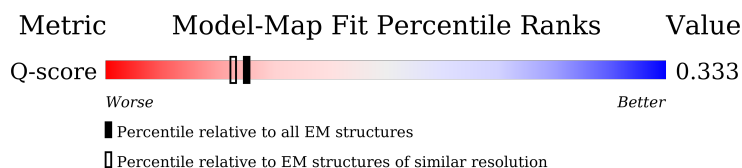
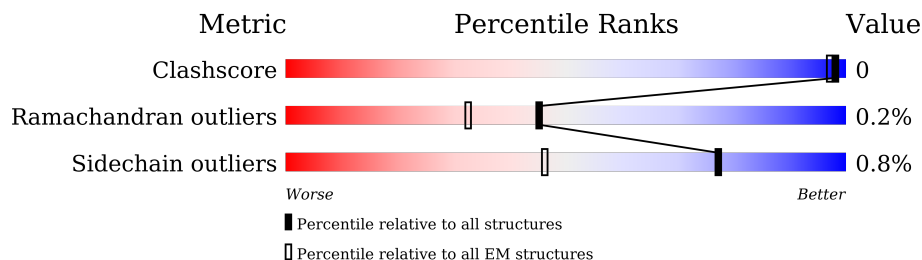
1 Overall quality at a glance

The following experimental techniques were used to determine the structure:

ELECTRON MICROSCOPY

The reported resolution of this entry is 3.76 Å.

Percentile scores (ranging between 0-100) for global validation metrics of the entry are shown in the following graphic. The table shows the number of entries on which the scores are based.



Metric	Whole archive (#Entries)	EM structures (#Entries)	Similar EM resolution (#Entries, resolution range(Å))
Clashscore	210492	15764	-
Ramachandran outliers	207382	16835	-
Sidechain outliers	206894	16415	-
Q-score	-	25397	10214 (3.26 - 4.26)

The table below summarises the geometric issues observed across the polymeric chains and their fit to the map. The red, orange, yellow and green segments of the bar indicate the fraction of residues that contain outliers for ≥ 3 , 2, 1 and 0 types of geometric quality criteria respectively. A grey segment represents the fraction of residues that are not modelled. The numeric value for each fraction is indicated below the corresponding segment, with a dot representing fractions $\leq 5\%$. The upper red bar (where present) indicates the fraction of residues that have poor fit to the EM map (all-atom inclusion $< 40\%$). The numeric value is given above the bar.

Mol	Chain	Length	Quality of chain
1	A	1653	
2	B	84	

2 Entry composition

There are 2 unique types of molecules in this entry. The entry contains 21872 atoms, of which 10829 are hydrogens and 0 are deuteriums.

In the tables below, the AltConf column contains the number of residues with at least one atom in alternate conformation and the Trace column contains the number of residues modelled with at most 2 atoms.

- Molecule 1 is a protein called PvdL.

Mol	Chain	Residues	Atoms						AltConf	Trace
			Total	C	H	N	O	S		
1	A	1332	20873	6671	10342	1890	1939	31	0	0

There are 13 discrepancies between the modelled and reference sequences:

Chain	Residue	Modelled	Actual	Comment	Reference
A	2690	MET	-	initiating methionine	UNP Q9I157
A	2691	GLY	-	expression tag	UNP Q9I157
A	2692	SER	-	expression tag	UNP Q9I157
A	2693	SER	-	expression tag	UNP Q9I157
A	2694	HIS	-	expression tag	UNP Q9I157
A	2695	HIS	-	expression tag	UNP Q9I157
A	2696	HIS	-	expression tag	UNP Q9I157
A	2697	HIS	-	expression tag	UNP Q9I157
A	2698	HIS	-	expression tag	UNP Q9I157
A	2699	HIS	-	expression tag	UNP Q9I157
A	2700	SER	-	expression tag	UNP Q9I157
A	2701	SER	-	expression tag	UNP Q9I157
A	2702	GLY	-	expression tag	UNP Q9I157

- Molecule 2 is a protein called MbtH-like domain-containing protein.

Mol	Chain	Residues	Atoms						AltConf	Trace
			Total	C	H	N	O	S		
2	B	61	999	326	487	87	96	3	0	0

There are 12 discrepancies between the modelled and reference sequences:

Chain	Residue	Modelled	Actual	Comment	Reference
B	73	SER	-	expression tag	UNP Q9I169
B	74	THR	-	expression tag	UNP Q9I169
B	75	GLY	-	expression tag	UNP Q9I169
B	76	ASN	-	expression tag	UNP Q9I169

Continued on next page...

Continued from previous page...

Chain	Residue	Modelled	Actual	Comment	Reference
B	77	TRP	-	expression tag	UNP Q9I169
B	78	SER	-	expression tag	UNP Q9I169
B	79	HIS	-	expression tag	UNP Q9I169
B	80	PRO	-	expression tag	UNP Q9I169
B	81	GLN	-	expression tag	UNP Q9I169
B	82	PHE	-	expression tag	UNP Q9I169
B	83	GLU	-	expression tag	UNP Q9I169
B	84	LYS	-	expression tag	UNP Q9I169

4 Experimental information

Property	Value	Source
EM reconstruction method	SINGLE PARTICLE	Depositor
Imposed symmetry	POINT, Not provided	
Number of particles used	180174	Depositor
Resolution determination method	FSC 0.143 CUT-OFF	Depositor
CTF correction method	PHASE FLIPPING AND AMPLITUDE CORRECTION	Depositor
Microscope	TFS KRIOS	Depositor
Voltage (kV)	300	Depositor
Electron dose ($e^-/\text{\AA}^2$)	50	Depositor
Minimum defocus (nm)	800	Depositor
Maximum defocus (nm)	1800	Depositor
Magnification	105000	Depositor
Image detector	GATAN K3 (6k x 4k)	Depositor
Maximum map value	0.516	Depositor
Minimum map value	-0.262	Depositor
Average map value	-0.000	Depositor
Map value standard deviation	0.010	Depositor
Recommended contour level	0.035	Depositor
Map size (Å)	280.16, 280.16, 280.16	wwPDB
Map dimensions	340, 340, 340	wwPDB
Map angles (°)	90.0, 90.0, 90.0	wwPDB
Pixel spacing (Å)	0.824, 0.824, 0.824	Depositor

5 Model quality

5.1 Standard geometry

The Z score for a bond length (or angle) is the number of standard deviations the observed value is removed from the expected value. A bond length (or angle) with $|Z| > 5$ is considered an outlier worth inspection. RMSZ is the root-mean-square of all Z scores of the bond lengths (or angles).

Mol	Chain	Bond lengths		Bond angles	
		RMSZ	$\# Z > 5$	RMSZ	$\# Z > 5$
1	A	0.75	1/10788 (0.0%)	1.31	18/14684 (0.1%)
2	B	0.74	0/526	1.29	0/712
All	All	0.75	1/11314 (0.0%)	1.31	18/15396 (0.1%)

Chiral center outliers are detected by calculating the chiral volume of a chiral center and verifying if the center is modelled as a planar moiety or with the opposite hand. A planarity outlier is detected by checking planarity of atoms in a peptide group, atoms in a mainchain group or atoms of a sidechain that are expected to be planar.

Mol	Chain	#Chirality outliers	#Planarity outliers
1	A	0	3

All (1) bond length outliers are listed below:

Mol	Chain	Res	Type	Atoms	Z	Observed(Å)	Ideal(Å)
1	A	2793	THR	N-CA	5.01	1.49	1.46

All (18) bond angle outliers are listed below:

Mol	Chain	Res	Type	Atoms	Z	Observed(°)	Ideal(°)
1	A	2806	ARG	NE-CZ-NH2	6.77	125.29	119.20
1	A	3368	ARG	NE-CZ-NH2	6.03	124.62	119.20
1	A	3358	ASP	CA-C-N	5.90	128.77	120.28
1	A	3358	ASP	C-N-CA	5.90	128.77	120.28
1	A	3411	ARG	NE-CZ-NH2	5.66	124.30	119.20
1	A	3437	ARG	NE-CZ-NH2	5.65	124.28	119.20
1	A	3461	ARG	NE-CZ-NH2	5.65	124.28	119.20
1	A	3707	ARG	NE-CZ-NH2	5.40	124.06	119.20
1	A	3341	HIS	CB-CG-CD2	-5.38	124.21	131.20
1	A	3486	ARG	NE-CZ-NH2	5.37	124.03	119.20
1	A	3750	ARG	NE-CZ-NH2	5.22	123.89	119.20
1	A	3308	PHE	CA-CB-CG	5.20	119.00	113.80
1	A	3732	ALA	N-CA-C	5.15	116.67	108.79

Continued on next page...

Continued from previous page...

Mol	Chain	Res	Type	Atoms	Z	Observed(°)	Ideal(°)
1	A	3080	ARG	NE-CZ-NH2	5.11	123.80	119.20
1	A	3190	ARG	NE-CZ-NH2	5.11	123.80	119.20
1	A	3359	LEU	N-CA-CB	-5.10	102.36	110.22
1	A	3901	ASP	CA-CB-CG	5.10	117.70	112.60
1	A	2885	ARG	NE-CZ-NH2	5.00	123.70	119.20

There are no chirality outliers.

All (3) planarity outliers are listed below:

Mol	Chain	Res	Type	Group
1	A	2857	ARG	Sidechain
1	A	3176	TYR	Sidechain
1	A	3191	TYR	Sidechain

5.2 Too-close contacts ⓘ

In the following table, the Non-H and H(model) columns list the number of non-hydrogen atoms and hydrogen atoms in the chain respectively. The H(added) column lists the number of hydrogen atoms added and optimized by MolProbity. The Clashes column lists the number of clashes within the asymmetric unit, whereas Symm-Clashes lists symmetry-related clashes.

Mol	Chain	Non-H	H(model)	H(added)	Clashes	Symm-Clashes
1	A	10531	10342	10341	6	0
2	B	512	487	486	0	0
All	All	11043	10829	10827	6	0

The all-atom clashscore is defined as the number of clashes found per 1000 atoms (including hydrogen atoms). The all-atom clashscore for this structure is 0.

All (6) close contacts within the same asymmetric unit are listed below, sorted by their clash magnitude.

Atom-1	Atom-2	Interatomic distance (Å)	Clash overlap (Å)
1:A:3038:VAL:HG21	1:A:3203:TYR:HA	2.00	0.44
1:A:3307:SER:HB3	1:A:3321:HIS:CD2	2.53	0.43
1:A:3731:ALA:HA	1:A:3741:TYR:CZ	2.53	0.43
1:A:3307:SER:HA	1:A:3363:PRO:HA	2.02	0.42
1:A:3636:LEU:HD23	1:A:3636:LEU:C	2.45	0.41
1:A:3865:ALA:H	1:A:3883:GLU:HA	1.86	0.40

There are no symmetry-related clashes.

5.3 Torsion angles

5.3.1 Protein backbone

In the following table, the Percentiles column shows the percent Ramachandran outliers of the chain as a percentile score with respect to all PDB entries followed by that with respect to all EM entries.

The Analysed column shows the number of residues for which the backbone conformation was analysed, and the total number of residues.

Mol	Chain	Analysed	Favoured	Allowed	Outliers	Percentiles	
1	A	1330/1653 (80%)	1267 (95%)	61 (5%)	2 (0%)	44	73
2	B	59/84 (70%)	55 (93%)	3 (5%)	1 (2%)	7	36
All	All	1389/1737 (80%)	1322 (95%)	64 (5%)	3 (0%)	45	73

All (3) Ramachandran outliers are listed below:

Mol	Chain	Res	Type
1	A	4040	ASP
1	A	2848	VAL
2	B	10	ILE

5.3.2 Protein sidechains

In the following table, the Percentiles column shows the percent sidechain outliers of the chain as a percentile score with respect to all PDB entries followed by that with respect to all EM entries.

The Analysed column shows the number of residues for which the sidechain conformation was analysed, and the total number of residues.

Mol	Chain	Analysed	Rotameric	Outliers	Percentiles	
1	A	1092/1358 (80%)	1084 (99%)	8 (1%)	81	88
2	B	55/74 (74%)	54 (98%)	1 (2%)	54	72
All	All	1147/1432 (80%)	1138 (99%)	9 (1%)	77	85

All (9) residues with a non-rotameric sidechain are listed below:

Mol	Chain	Res	Type
1	A	2968	LEU
1	A	3428	LEU
1	A	3511	ARG

Continued on next page...

Continued from previous page...

Mol	Chain	Res	Type
1	A	3541	LEU
1	A	3568	LEU
1	A	3683	GLU
1	A	3961	PRO
1	A	4053	ASP
2	B	16	VAL

Sometimes sidechains can be flipped to improve hydrogen bonding and reduce clashes. All (13) such sidechains are listed below:

Mol	Chain	Res	Type
1	A	2817	GLN
1	A	2862	GLN
1	A	3349	HIS
1	A	3383	ASN
1	A	3499	ASN
1	A	3503	GLN
1	A	3572	ASN
1	A	3908	GLN
1	A	3936	ASN
1	A	3940	HIS
1	A	3965	GLN
1	A	3995	GLN
1	A	4007	ASN

5.3.3 RNA [i](#)

There are no RNA molecules in this entry.

5.4 Non-standard residues in protein, DNA, RNA chains [i](#)

There are no non-standard protein/DNA/RNA residues in this entry.

5.5 Carbohydrates [i](#)

There are no oligosaccharides in this entry.

5.6 Ligand geometry [i](#)

There are no ligands in this entry.

5.7 Other polymers

There are no such residues in this entry.

5.8 Polymer linkage issues

There are no chain breaks in this entry.

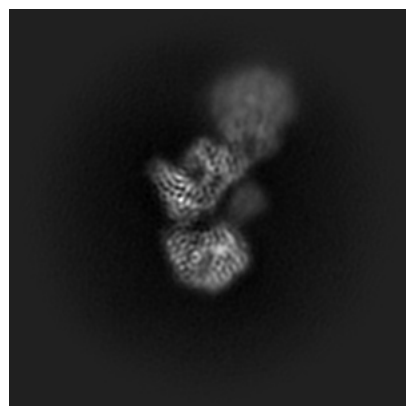
6 Map visualisation [i](#)

This section contains visualisations of the EMDB entry EMD-62989. These allow visual inspection of the internal detail of the map and identification of artifacts.

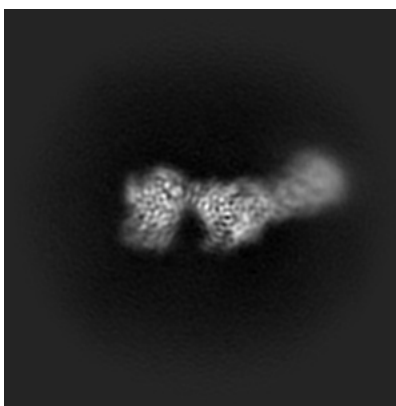
Images derived from a raw map, generated by summing the deposited half-maps, are presented below the corresponding image components of the primary map to allow further visual inspection and comparison with those of the primary map.

6.1 Orthogonal projections [i](#)

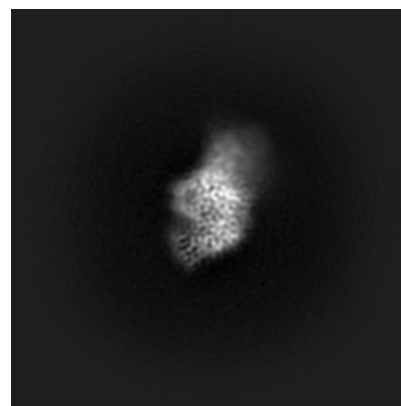
6.1.1 Primary map



X

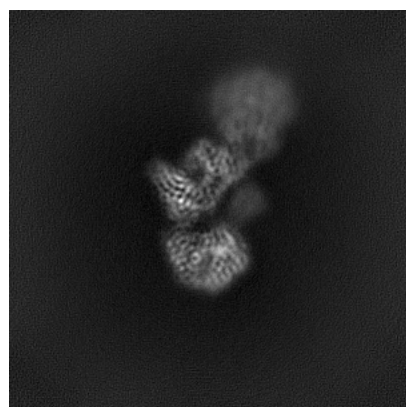


Y

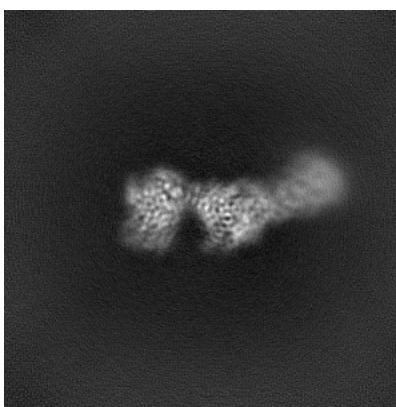


Z

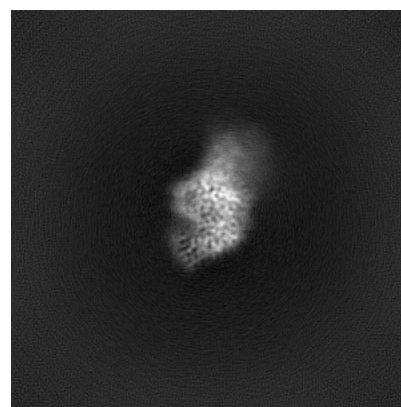
6.1.2 Raw map



X



Y

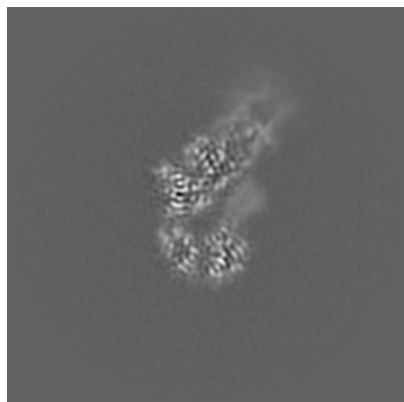


Z

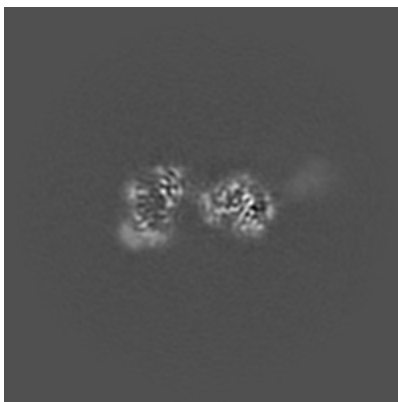
The images above show the map projected in three orthogonal directions.

6.2 Central slices [i](#)

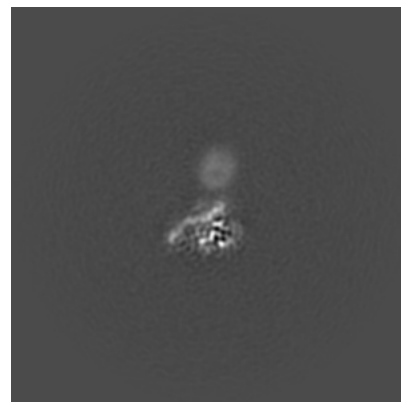
6.2.1 Primary map



X Index: 170

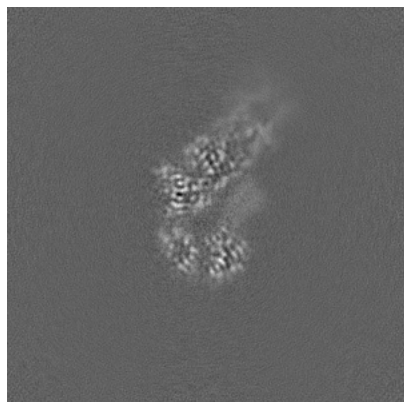


Y Index: 170

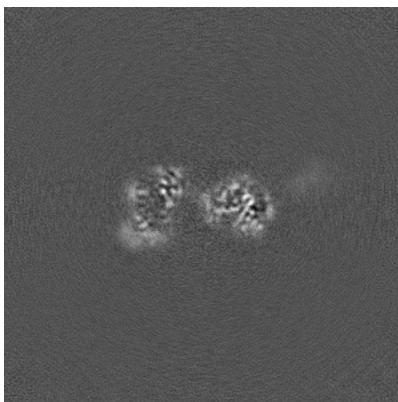


Z Index: 170

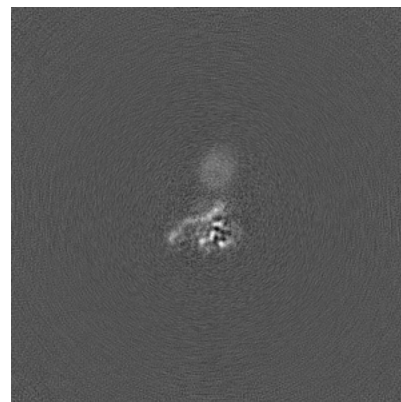
6.2.2 Raw map



X Index: 170



Y Index: 170

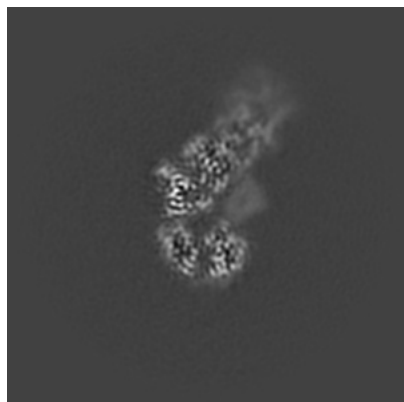


Z Index: 170

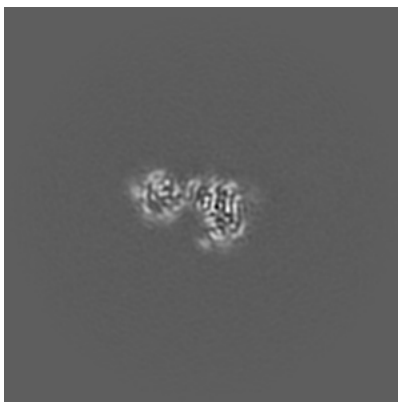
The images above show central slices of the map in three orthogonal directions.

6.3 Largest variance slices [i](#)

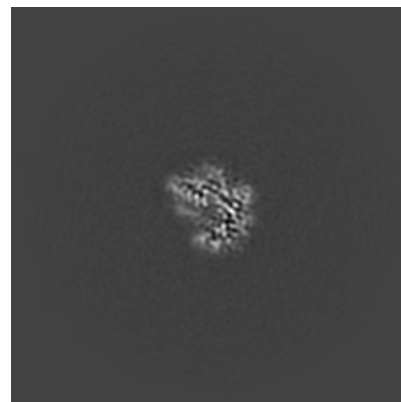
6.3.1 Primary map



X Index: 172

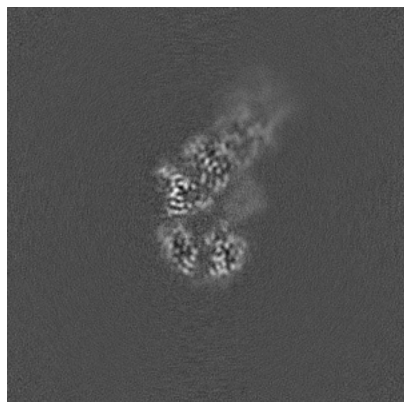


Y Index: 146

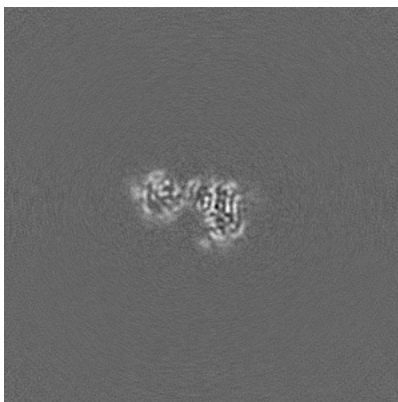


Z Index: 136

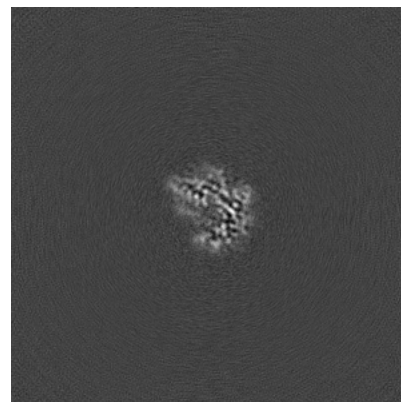
6.3.2 Raw map



X Index: 172



Y Index: 146

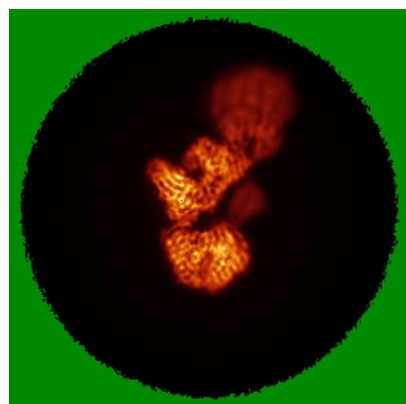


Z Index: 136

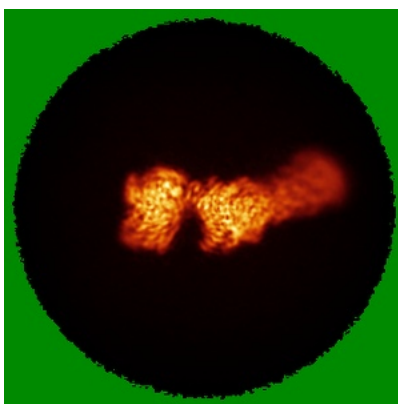
The images above show the largest variance slices of the map in three orthogonal directions.

6.4 Orthogonal standard-deviation projections (False-color) [i](#)

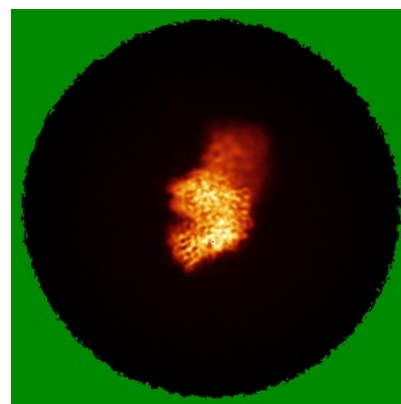
6.4.1 Primary map



X

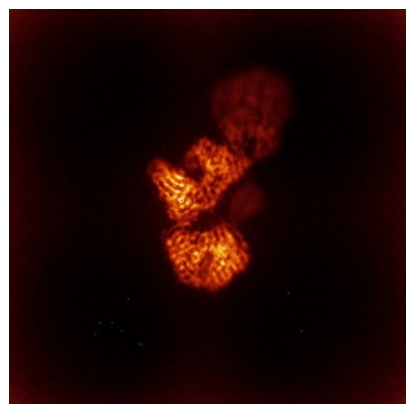


Y

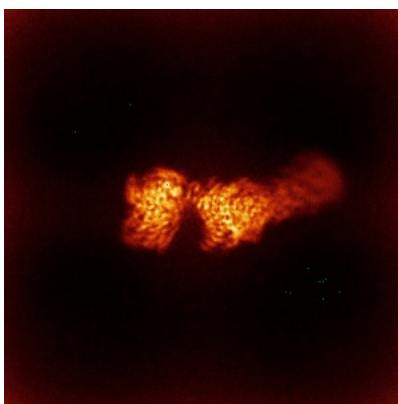


Z

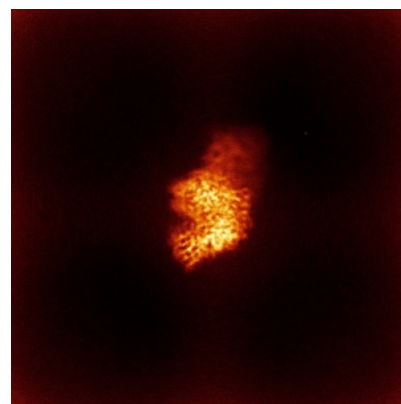
6.4.2 Raw map



X



Y

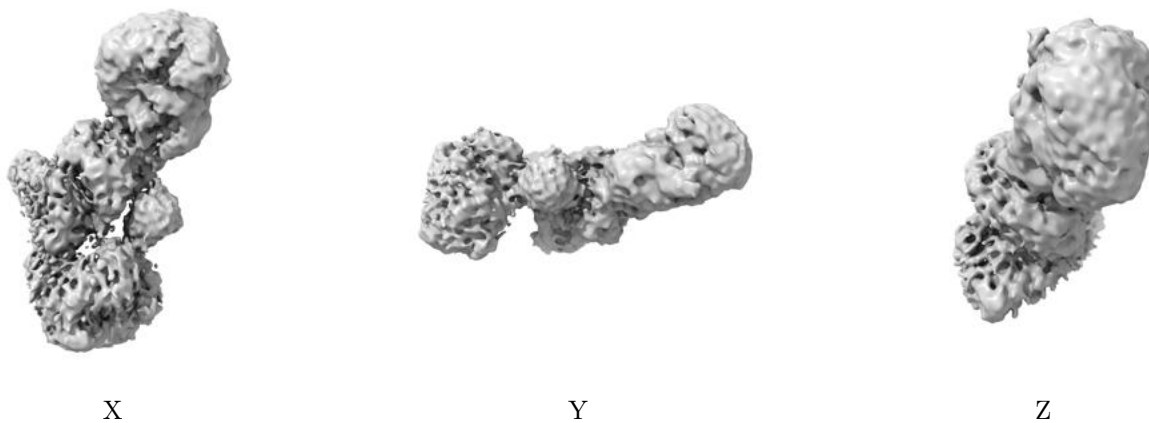


Z

The images above show the map standard deviation projections with false color in three orthogonal directions. Minimum values are shown in green, max in blue, and dark to light orange shades represent small to large values respectively.

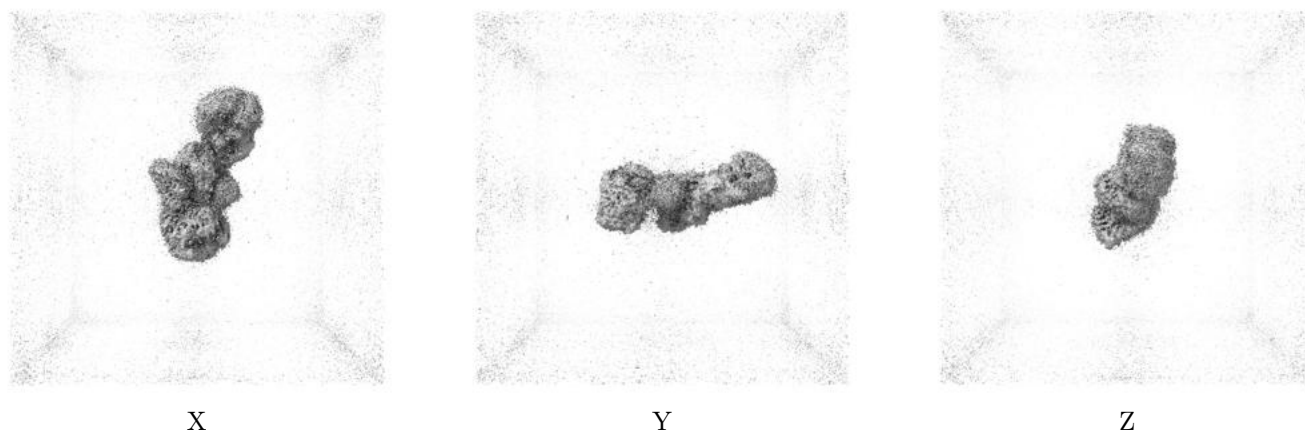
6.5 Orthogonal surface views [i](#)

6.5.1 Primary map



The images above show the 3D surface view of the map at the recommended contour level 0.035. These images, in conjunction with the slice images, may facilitate assessment of whether an appropriate contour level has been provided.

6.5.2 Raw map



These images show the 3D surface of the raw map. The raw map's contour level was selected so that its surface encloses the same volume as the primary map does at its recommended contour level.

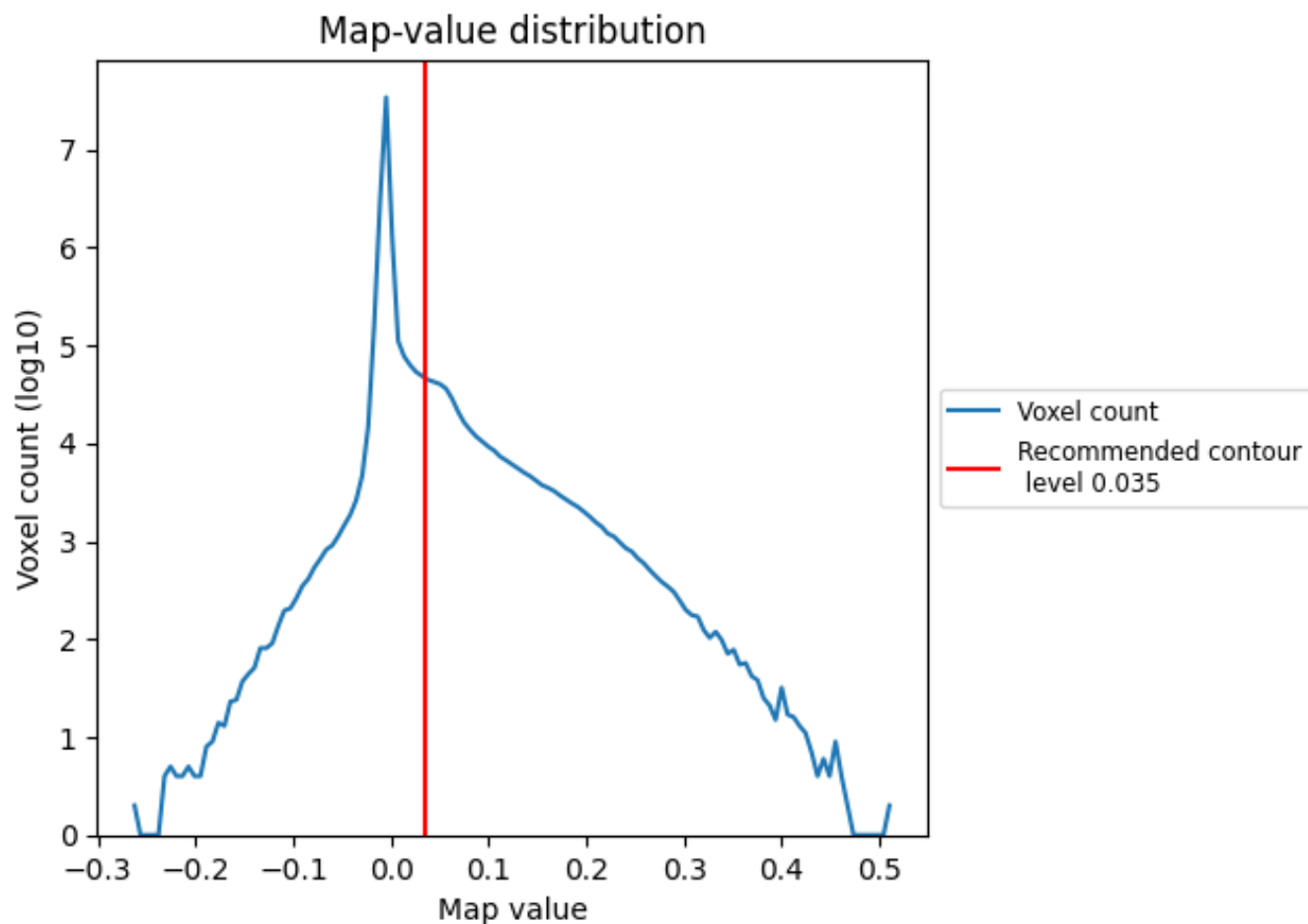
6.6 Mask visualisation [i](#)

This section was not generated. No masks/segmentation were deposited.

7 Map analysis [i](#)

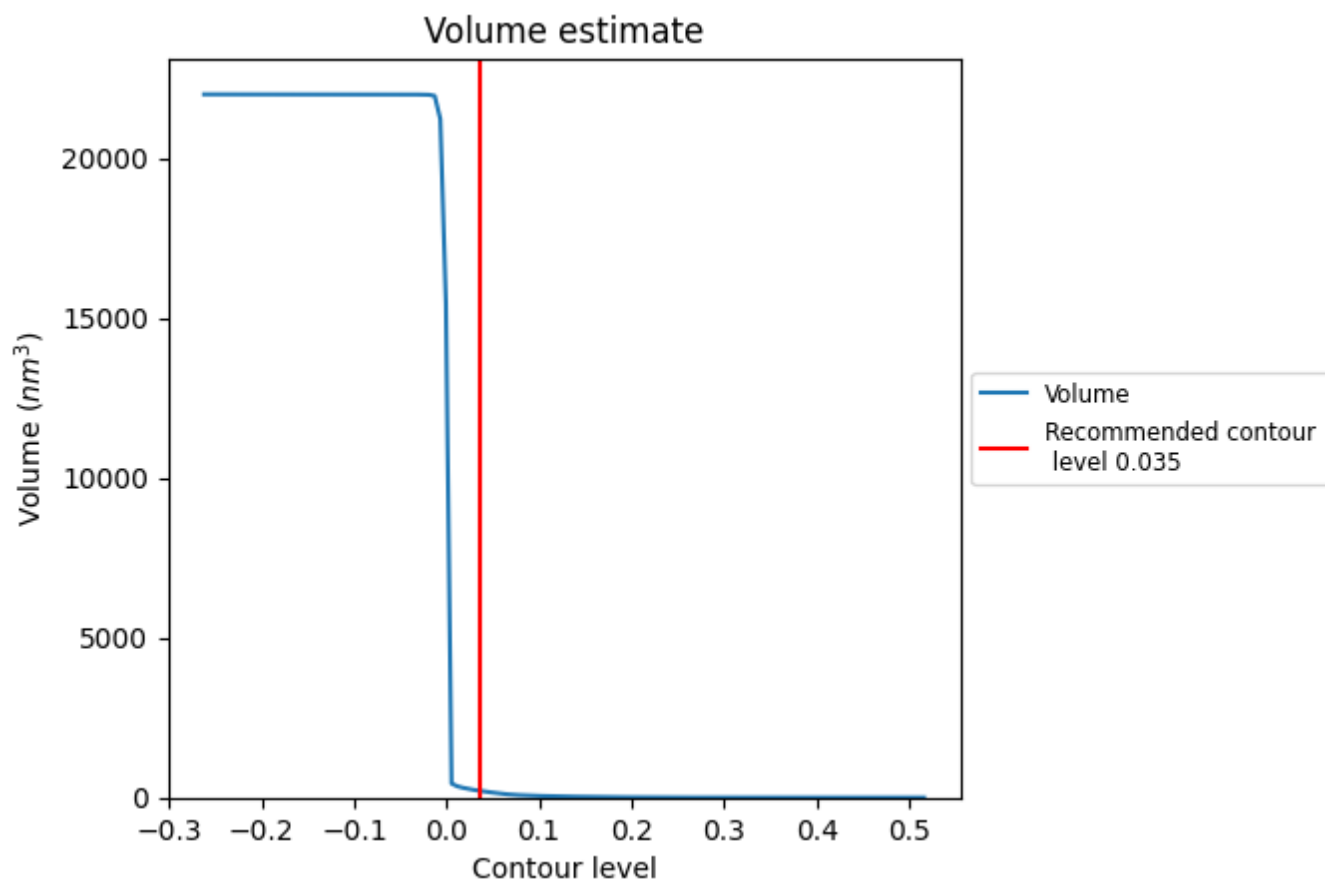
This section contains the results of statistical analysis of the map.

7.1 Map-value distribution [i](#)



The map-value distribution is plotted in 128 intervals along the x-axis. The y-axis is logarithmic. A spike in this graph at zero usually indicates that the volume has been masked.

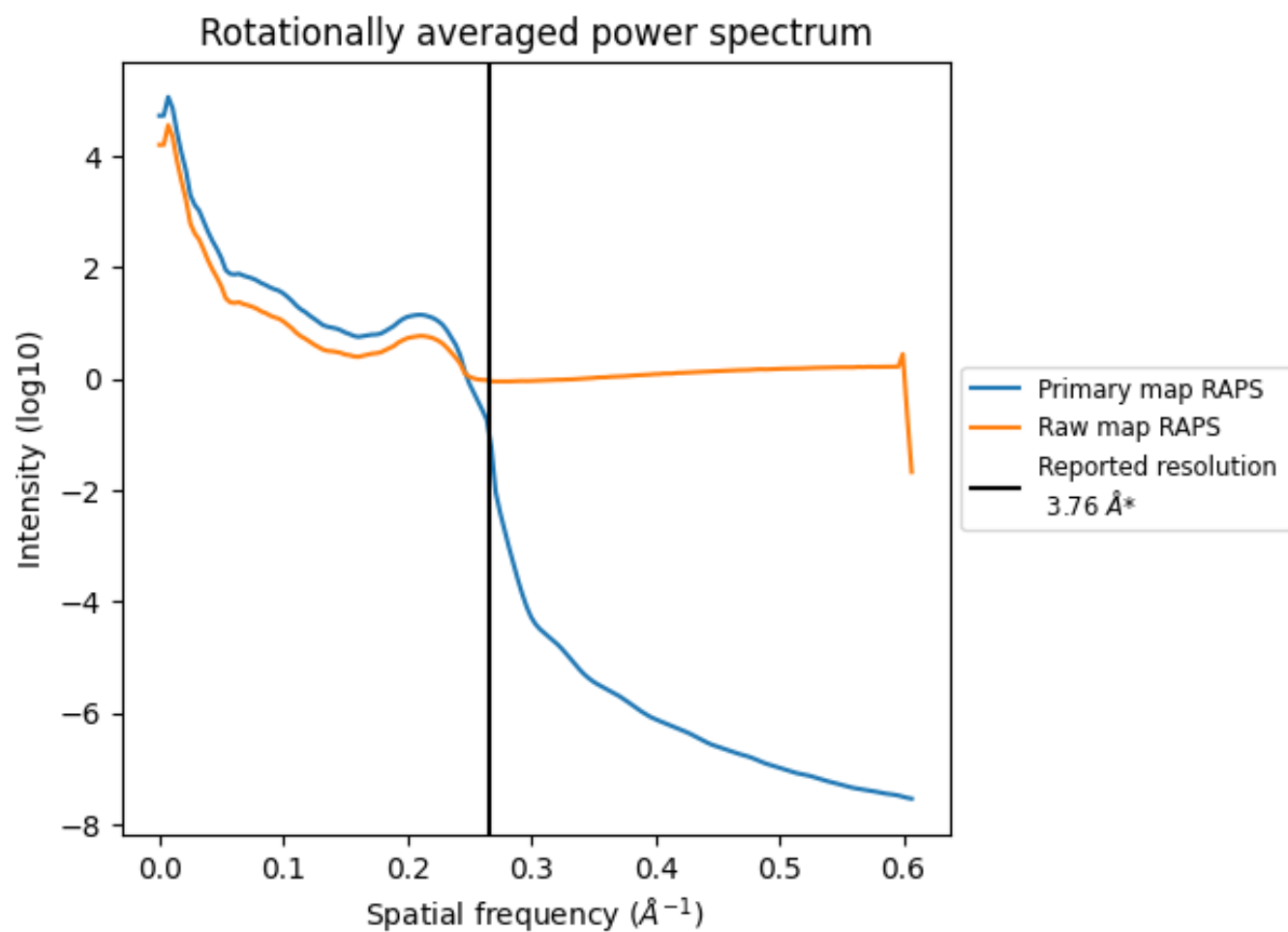
7.2 Volume estimate [i](#)



The volume at the recommended contour level is 215 nm^3 ; this corresponds to an approximate mass of 194 kDa.

The volume estimate graph shows how the enclosed volume varies with the contour level. The recommended contour level is shown as a vertical line and the intersection between the line and the curve gives the volume of the enclosed surface at the given level.

7.3 Rotationally averaged power spectrum ⓘ

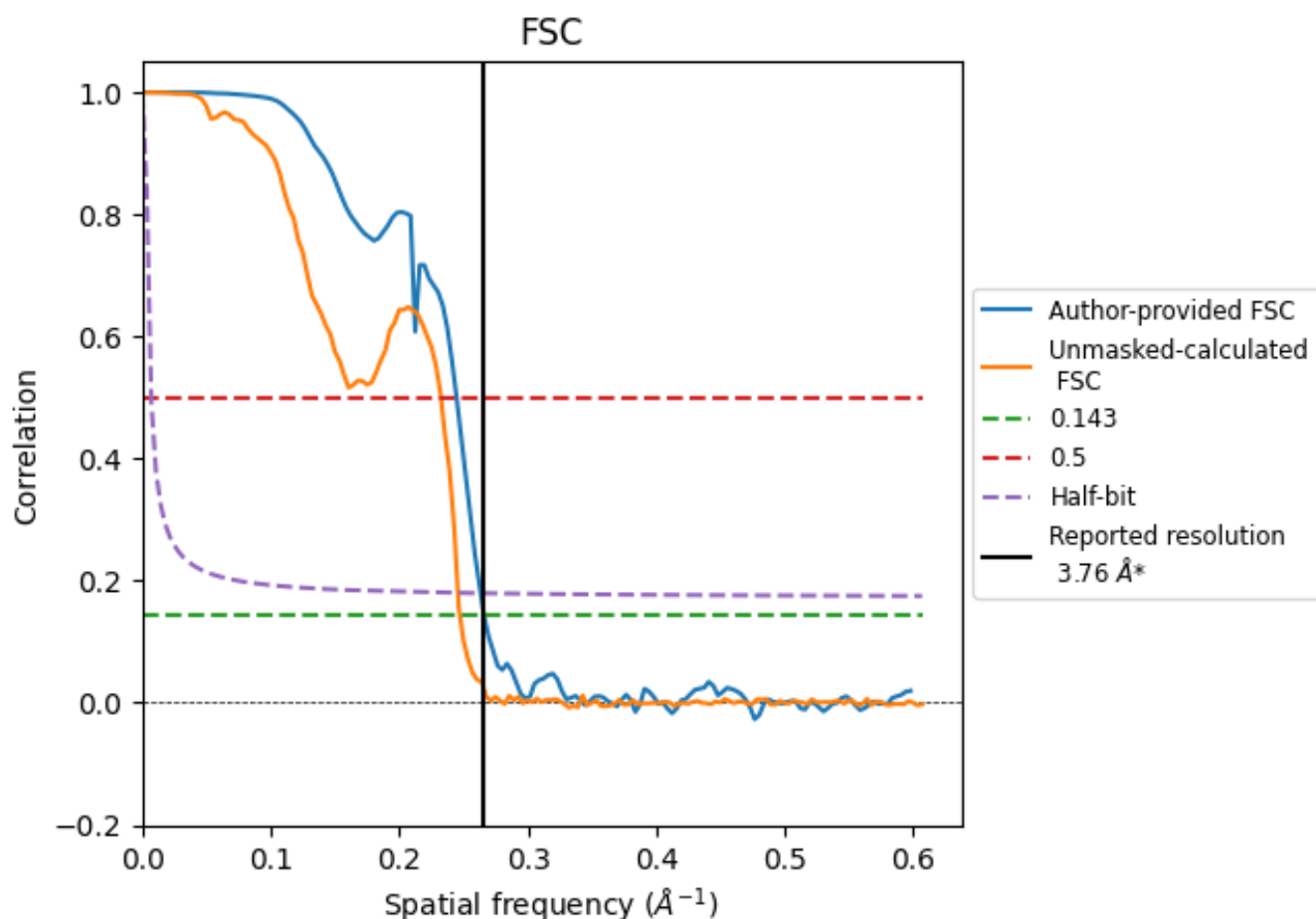


*Reported resolution corresponds to spatial frequency of 0.266 Å⁻¹

8 Fourier-Shell correlation [i](#)

Fourier-Shell Correlation (FSC) is the most commonly used method to estimate the resolution of single-particle and subtomogram-averaged maps. The shape of the curve depends on the imposed symmetry, mask and whether or not the two 3D reconstructions used were processed from a common reference. The reported resolution is shown as a black line. A curve is displayed for the half-bit criterion in addition to lines showing the 0.143 gold standard cut-off and 0.5 cut-off.

8.1 FSC [i](#)



*Reported resolution corresponds to spatial frequency of 0.266 \AA^{-1}

8.2 Resolution estimates [i](#)

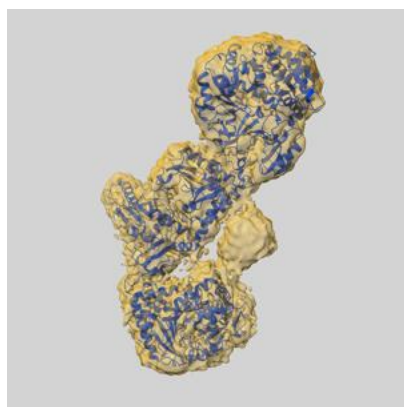
Resolution estimate (Å)	Estimation criterion (FSC cut-off)		
	0.143	0.5	Half-bit
Reported by author	3.76	-	-
Author-provided FSC curve	3.76	4.09	3.80
Unmasked-calculated*	4.05	4.30	4.07

*Resolution estimate based on FSC curve calculated by comparison of deposited half-maps.

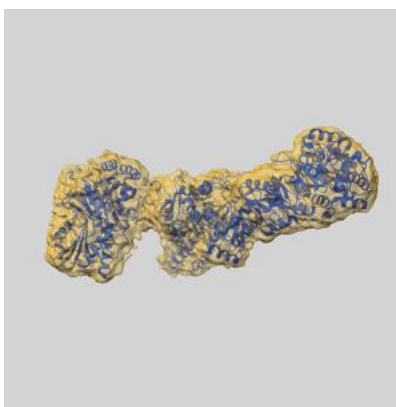
9 Map-model fit [i](#)

This section contains information regarding the fit between EMDB map EMD-62989 and PDB model 9LCP. Per-residue inclusion information can be found in section [3](#) on page [5](#).

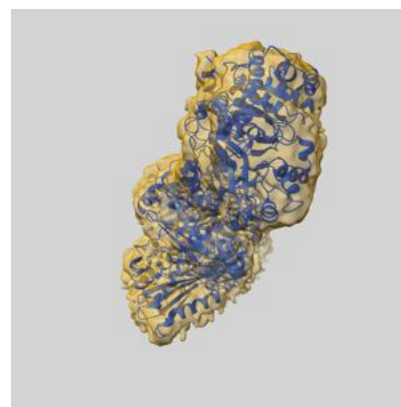
9.1 Map-model overlay [i](#)



X



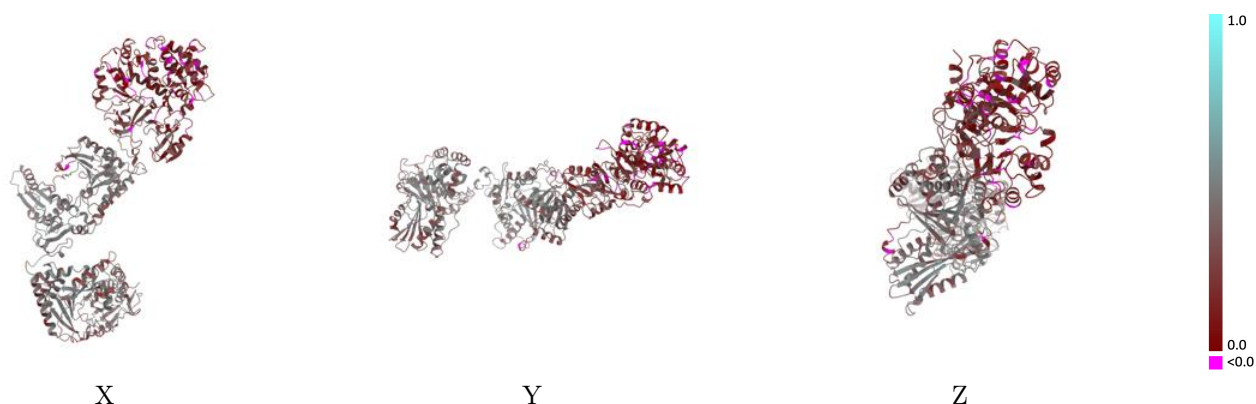
Y



Z

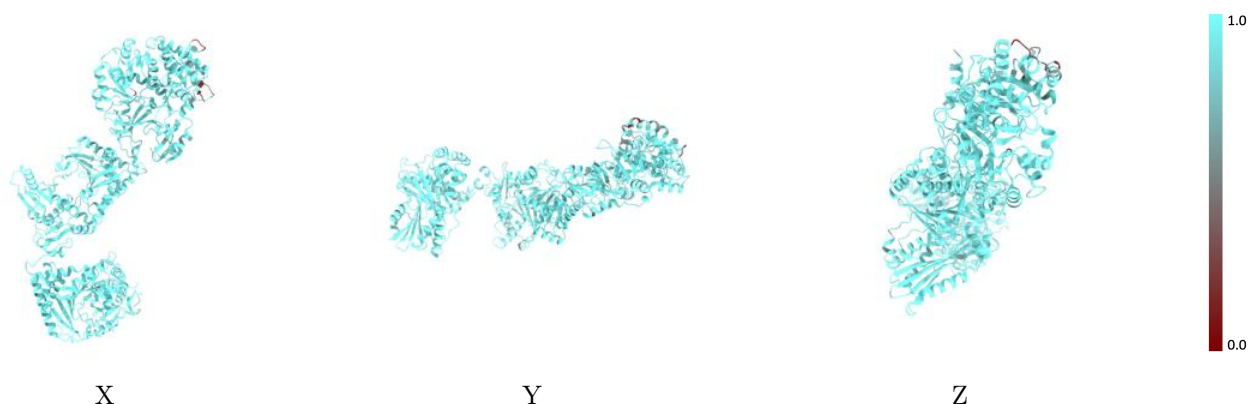
The images above show the 3D surface view of the map at the recommended contour level 0.035 at 50% transparency in yellow overlaid with a ribbon representation of the model coloured in blue. These images allow for the visual assessment of the quality of fit between the atomic model and the map.

9.2 Q-score mapped to coordinate model [i](#)



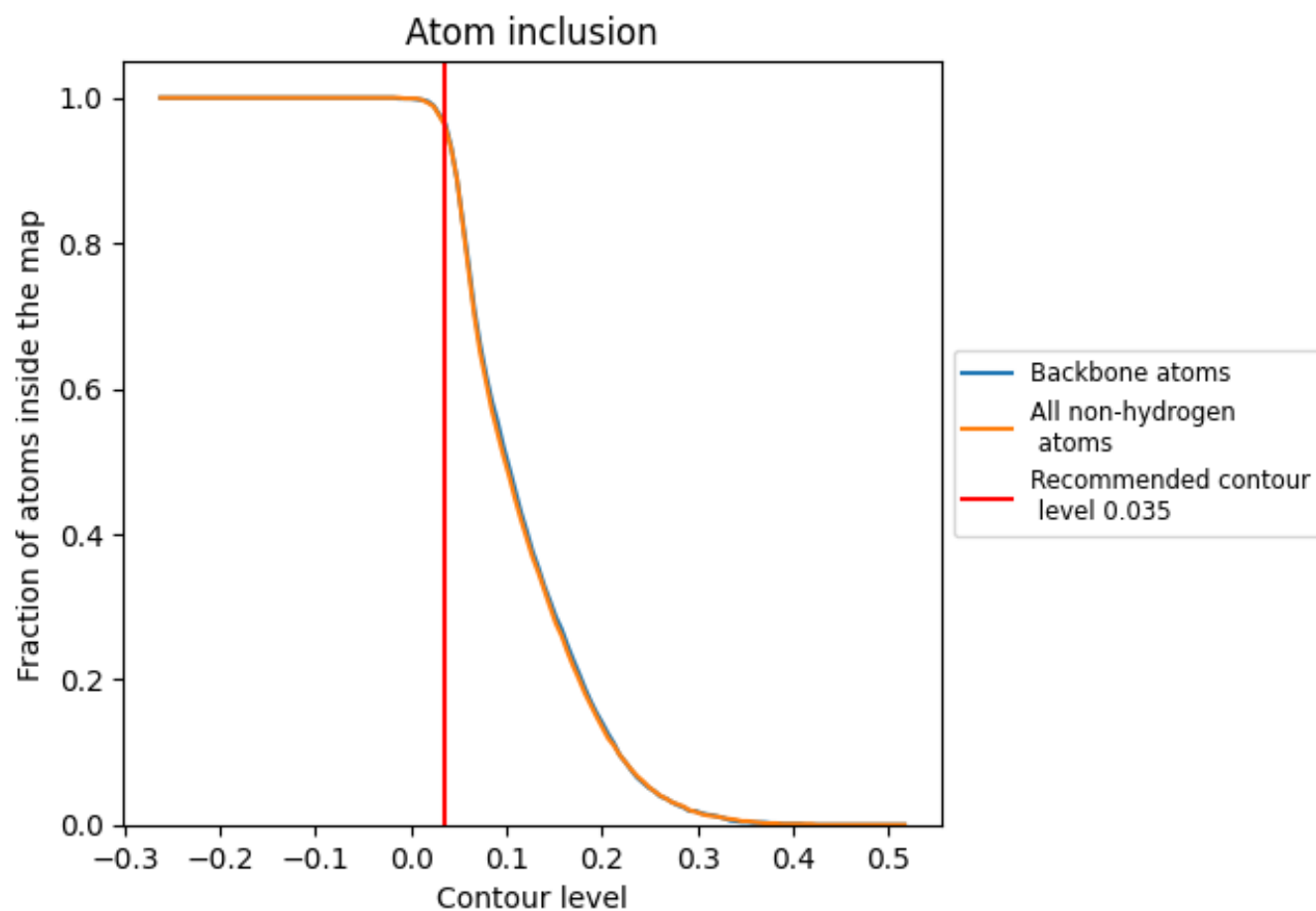
The images above show the model with each residue coloured according to its Q-score. This shows their resolvability in the map with higher Q-score values reflecting better resolvability. Please note: Q-score is calculating the resolvability of atoms, and thus high values are only expected at resolutions at which atoms can be resolved. Low Q-score values may therefore be expected for many entries.

9.3 Atom inclusion mapped to coordinate model [i](#)



The images above show the model with each residue coloured according to its atom inclusion. This shows to what extent they are inside the map at the recommended contour level (0.035).

9.4 Atom inclusion [i](#)



At the recommended contour level, 97% of all backbone atoms, 96% of all non-hydrogen atoms, are inside the map.

9.5 Map-model fit summary ⓘ

The table lists the average atom inclusion at the recommended contour level (0.035) and Q-score for the entire model and for each chain.

Chain	Atom inclusion	Q-score
All	<div></div> 0.9630	<div></div> 0.3330
A	<div></div> 0.9690	<div></div> 0.3390
B	<div></div> 0.9000	<div></div> 0.2020

