



# Full wwPDB X-ray Structure Validation Report ⓘ

Jun 29, 2026 – 02:05 PM EDT

PDB ID : 9OGJ / pdb\_00009ogj  
Title : Structure of TEAD2 bound to G2181  
Authors : Hsu, P.L.; Boenig, G.  
Deposited on : 2025-04-30  
Resolution : 2.50 Å(reported)

This is a Full wwPDB X-ray Structure Validation Report for a publicly released PDB entry.

We welcome your comments at [validation@mail.wwpdb.org](mailto:validation@mail.wwpdb.org)

A user guide is available at

<https://www.wwpdb.org/validation/2017/XrayValidationReportHelp>

with specific help available everywhere you see the ⓘ symbol.

The types of validation reports are described at

<http://www.wwpdb.org/validation/2017/FAQs#types>.

---

The following versions of software and data (see [references ⓘ](#)) were used in the production of this report:

MolProbity : 4-5-2 with Phenix2.0  
Mogul : 2022.3.0, CSD as543be (2022)  
Xtrriage (Phenix) : 2.0  
EDS : 3.0  
Buster-report : wwPDB partial adaption of 1.1.7 (2018)  
Percentile statistics : 20250101.v01 (using entries in the PDB archive January 1st 2025)  
CCP4 : 9.0.015 (Gargrove)  
Density-Fitness : 1.0.12  
Ideal geometry (proteins) : Engh & Huber (2001)  
Ideal geometry (DNA, RNA) : Parkinson et al. (1996)  
Validation Pipeline (wwPDB-VP) : 2.50

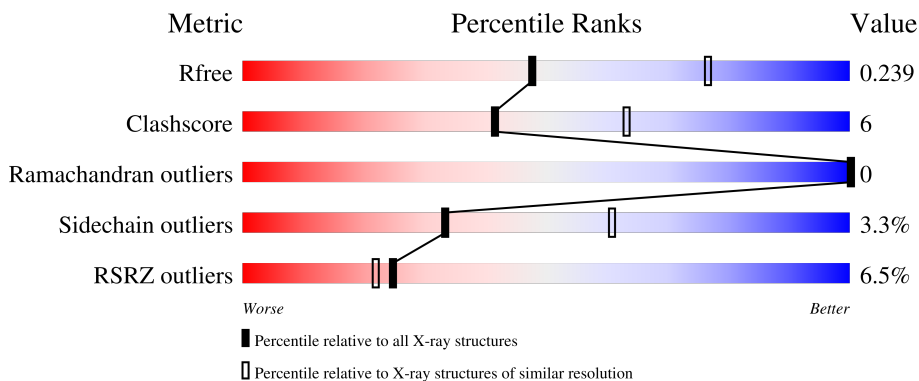
# 1 Overall quality at a glance

The following experimental techniques were used to determine the structure:

*X-RAY DIFFRACTION*

The reported resolution of this entry is 2.50 Å.

Percentile scores (ranging between 0-100) for global validation metrics of the entry are shown in the following graphic. The table shows the number of entries on which the scores are based.



Metric	Whole archive (#Entries)	Similar resolution (#Entries, resolution range(Å))
$R_{free}$	180053	5829 (2.50-2.50)
Clashscore	190562	6492 (2.50-2.50)
Ramachandran outliers	187476	6378 (2.50-2.50)
Sidechain outliers	187428	6380 (2.50-2.50)
RSRZ outliers	180081	5833 (2.50-2.50)

The table below summarises the geometric issues observed across the polymeric chains and their fit to the electron density. The red, orange, yellow and green segments of the lower bar indicate the fraction of residues that contain outliers for  $\geq 3$ , 2, 1 and 0 types of geometric quality criteria respectively. A grey segment represents the fraction of residues that are not modelled. The numeric value for each fraction is indicated below the corresponding segment, with a dot representing fractions  $\leq 5\%$ . The upper red bar (where present) indicates the fraction of residues that have poor fit to the electron density. The numeric value is given above the bar.

Mol	Chain	Length	Quality of chain
1	A	250	 3% 72% 13% 15%
1	B	250	 8% 66% 12% 20%

## 2 Entry composition i

There are 3 unique types of molecules in this entry. The entry contains 3542 atoms, of which 0 are hydrogens and 0 are deuteriums.

In the tables below, the ZeroOcc column contains the number of atoms modelled with zero occupancy, the AltConf column contains the number of residues with at least one atom in alternate conformation and the Trace column contains the number of residues modelled with at most 2 atoms.

- Molecule 1 is a protein called Transcriptional enhancer factor TEF-4.

Mol	Chain	Residues	Atoms					ZeroOcc	AltConf	Trace
			Total	C	N	O	S			
1	A	213	Total	C	N	O	S	0	10	0
			1765	1136	301	320	8			
1	B	200	Total	C	N	O	S	0	9	0
			1674	1080	287	299	8			

There are 38 discrepancies between the modelled and reference sequences:

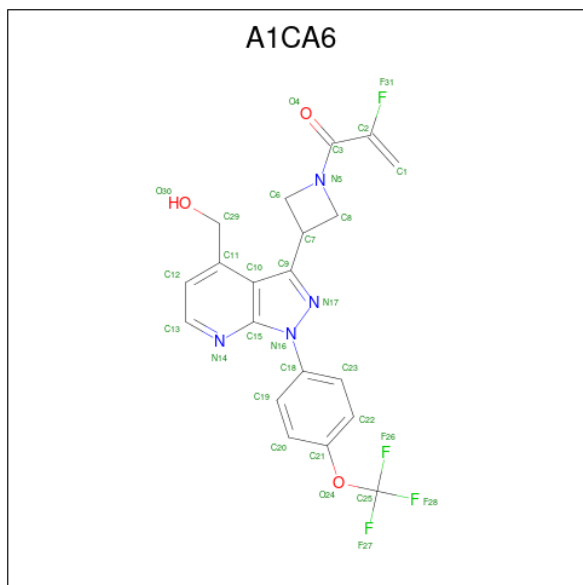
Chain	Residue	Modelled	Actual	Comment	Reference
A	201	MET	-	expression tag	UNP Q15562
A	202	HIS	-	expression tag	UNP Q15562
A	203	HIS	-	expression tag	UNP Q15562
A	204	HIS	-	expression tag	UNP Q15562
A	205	HIS	-	expression tag	UNP Q15562
A	206	HIS	-	expression tag	UNP Q15562
A	207	HIS	-	expression tag	UNP Q15562
A	208	GLY	-	expression tag	UNP Q15562
A	209	GLU	-	expression tag	UNP Q15562
A	210	ASN	-	expression tag	UNP Q15562
A	211	LEU	-	expression tag	UNP Q15562
A	212	TYR	-	expression tag	UNP Q15562
A	213	PHE	-	expression tag	UNP Q15562
A	214	GLN	-	expression tag	UNP Q15562
A	215	GLY	-	expression tag	UNP Q15562
A	216	SER	-	expression tag	UNP Q15562
A	448	GLY	-	expression tag	UNP Q15562
A	449	ASN	-	expression tag	UNP Q15562
A	450	SER	-	expression tag	UNP Q15562
B	201	MET	-	expression tag	UNP Q15562
B	202	HIS	-	expression tag	UNP Q15562
B	203	HIS	-	expression tag	UNP Q15562
B	204	HIS	-	expression tag	UNP Q15562
B	205	HIS	-	expression tag	UNP Q15562
B	206	HIS	-	expression tag	UNP Q15562

*Continued on next page...*

Continued from previous page...

Chain	Residue	Modelled	Actual	Comment	Reference
B	207	HIS	-	expression tag	UNP Q15562
B	208	GLY	-	expression tag	UNP Q15562
B	209	GLU	-	expression tag	UNP Q15562
B	210	ASN	-	expression tag	UNP Q15562
B	211	LEU	-	expression tag	UNP Q15562
B	212	TYR	-	expression tag	UNP Q15562
B	213	PHE	-	expression tag	UNP Q15562
B	214	GLN	-	expression tag	UNP Q15562
B	215	GLY	-	expression tag	UNP Q15562
B	216	SER	-	expression tag	UNP Q15562
B	448	GLY	-	expression tag	UNP Q15562
B	449	ASN	-	expression tag	UNP Q15562
B	450	SER	-	expression tag	UNP Q15562

- Molecule 2 is 2-fluoro-1-(3-{4-(hydroxymethyl)-1-[4-(trifluoromethoxy)phenyl]-1H-pyrazolo[3,4-b]pyridin-3-yl}azetid-1-yl)prop-2-en-1-one (CCD ID: A1CA6) (formula: C<sub>20</sub>H<sub>16</sub>F<sub>4</sub>N<sub>4</sub>O<sub>3</sub>) (labeled as "Ligand of Interest" by depositor).



Mol	Chain	Residues	Atoms				ZeroOcc	AltConf	
2	A	1	Total	C	F	N	O	0	0
			31	20	4	4	3		
2	B	1	Total	C	F	N	O	0	0
			31	20	4	4	3		

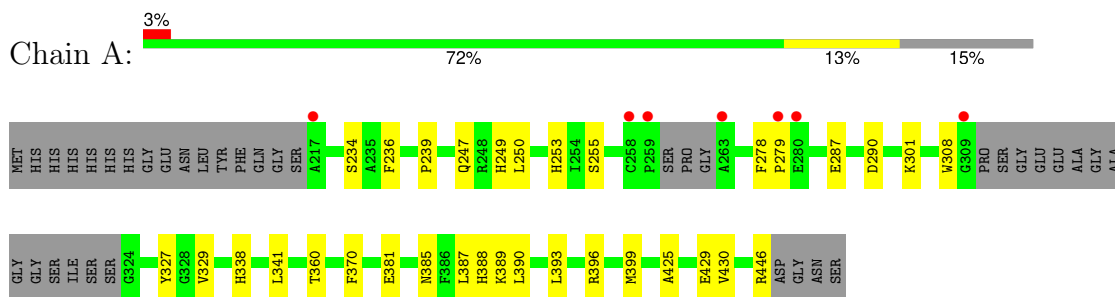
- Molecule 3 is water.

<b>Mol</b>	<b>Chain</b>	<b>Residues</b>	<b>Atoms</b>		<b>ZeroOcc</b>	<b>AltConf</b>
3	A	20	Total 20	O 20	0	0
3	B	21	Total 21	O 21	0	0

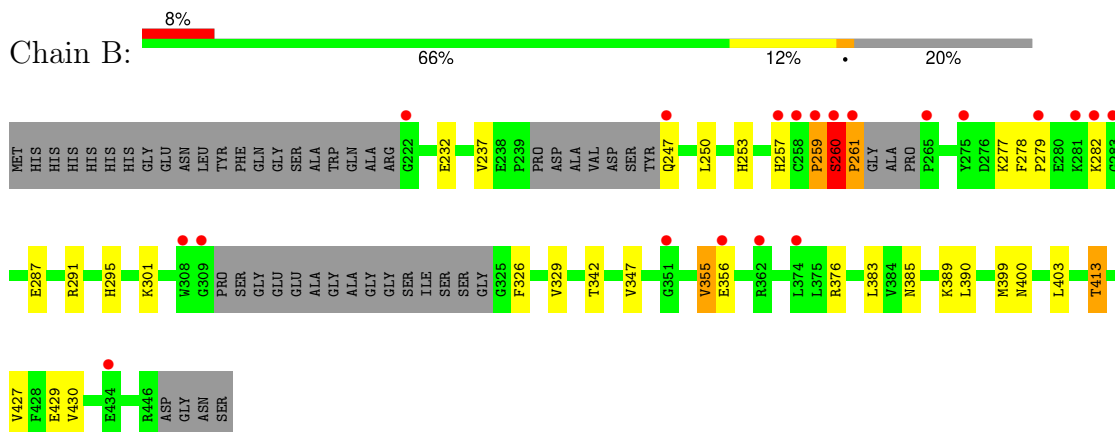
### 3 Residue-property plots

These plots are drawn for all protein, RNA, DNA and oligosaccharide chains in the entry. The first graphic for a chain summarises the proportions of the various outlier classes displayed in the second graphic. The second graphic shows the sequence view annotated by issues in geometry and electron density. Residues are color-coded according to the number of geometric quality criteria for which they contain at least one outlier: green = 0, yellow = 1, orange = 2 and red = 3 or more. A red dot above a residue indicates a poor fit to the electron density ( $RSRZ > 2$ ). Stretches of 2 or more consecutive residues without any outlier are shown as a green connector. Residues present in the sample, but not in the model, are shown in grey.

- Molecule 1: Transcriptional enhancer factor TEF-4



- Molecule 1: Transcriptional enhancer factor TEF-4



## 4 Data and refinement statistics

Property	Value	Source
Space group	C 1 2 1	Depositor
Cell constants a, b, c, $\alpha$ , $\beta$ , $\gamma$	125.41Å 61.89Å 79.87Å 90.00° 117.33° 90.00°	Depositor
Resolution (Å)	48.56 – 2.50 48.56 – 2.50	Depositor EDS
% Data completeness (in resolution range)	83.2 (48.56-2.50) 83.3 (48.56-2.50)	Depositor EDS
$R_{merge}$	(Not available)	Depositor
$R_{sym}$	(Not available)	Depositor
$\langle I/\sigma(I) \rangle$ <sup>1</sup>	1.95 (at 2.45Å)	Xtrriage
Refinement program	PHENIX (1.18.2_3874: ???)	Depositor
R, $R_{free}$	0.189 , 0.239 0.193 , 0.239	Depositor DCC
$R_{free}$ test set	819 reflections (4.04%)	wwPDB-VP
Wilson B-factor (Å <sup>2</sup> )	49.8	Xtrriage
Anisotropy	0.037	Xtrriage
Bulk solvent $k_{sol}$ (e/Å <sup>3</sup> ), $B_{sol}$ (Å <sup>2</sup> )	0.31 , 43.2	EDS
L-test for twinning <sup>2</sup>	$\langle  L  \rangle = 0.50$ , $\langle L^2 \rangle = 0.33$	Xtrriage
Estimated twinning fraction	No twinning to report.	Xtrriage
$F_o, F_c$ correlation	0.93	EDS
Total number of atoms	3542	wwPDB-VP
Average B, all atoms (Å <sup>2</sup> )	54.0	wwPDB-VP

Xtrriage's analysis on translational NCS is as follows: *The largest off-origin peak in the Patterson function is 6.88% of the height of the origin peak. No significant pseudotranslation is detected.*

<sup>1</sup>Intensities estimated from amplitudes.

<sup>2</sup>Theoretical values of  $\langle |L| \rangle$ ,  $\langle L^2 \rangle$  for acentric reflections are 0.5, 0.333 respectively for untwinned datasets, and 0.375, 0.2 for perfectly twinned datasets.

## 5 Model quality [i](#)

### 5.1 Standard geometry [i](#)

Bond lengths and bond angles in the following residue types are not validated in this section: A1CA6

The Z score for a bond length (or angle) is the number of standard deviations the observed value is removed from the expected value. A bond length (or angle) with  $|Z| > 5$  is considered an outlier worth inspection. RMSZ is the root-mean-square of all Z scores of the bond lengths (or angles).

Mol	Chain	Bond lengths		Bond angles	
		RMSZ	# Z  >5	RMSZ	# Z  >5
1	A	0.43	0/1830	0.66	0/2483
1	B	0.44	0/1735	1.31	8/2347 (0.3%)
All	All	0.43	0/3565	1.03	8/4830 (0.2%)

Chiral center outliers are detected by calculating the chiral volume of a chiral center and verifying if the center is modelled as a planar moiety or with the opposite hand. A planarity outlier is detected by checking planarity of atoms in a peptide group, atoms in a mainchain group or atoms of a sidechain that are expected to be planar.

Mol	Chain	#Chirality outliers	#Planarity outliers
1	B	1	1

There are no bond length outliers.

All (8) bond angle outliers are listed below:

Mol	Chain	Res	Type	Atoms	Z	Observed( $^{\circ}$ )	Ideal( $^{\circ}$ )
1	B	260	SER	N-CA-C	40.08	170.07	113.16
1	B	259	PRO	N-CA-C	22.70	159.24	112.47
1	B	260	SER	N-CA-CB	-18.29	82.07	110.43
1	B	282	LYS	N-CA-C	11.36	125.22	111.02
1	B	259	PRO	CB-CA-C	-8.84	96.98	111.56
1	B	259	PRO	N-CA-CB	-8.10	94.75	103.25
1	B	260	SER	CB-CA-C	-6.36	99.90	112.05
1	B	260	SER	C-N-CD	-5.50	102.47	125.00

All (1) chirality outliers are listed below:

Mol	Chain	Res	Type	Atom
1	B	260	SER	CA

All (1) planarity outliers are listed below:

Mol	Chain	Res	Type	Group
1	B	260	SER	Peptide

## 5.2 Too-close contacts [i](#)

In the following table, the Non-H and H(model) columns list the number of non-hydrogen atoms and hydrogen atoms in the chain respectively. The H(added) column lists the number of hydrogen atoms added and optimized by MolProbity. The Clashes column lists the number of clashes within the asymmetric unit, whereas Symm-Clashes lists symmetry-related clashes.

Mol	Chain	Non-H	H(model)	H(added)	Clashes	Symm-Clashes
1	A	1765	0	1714	21	0
1	B	1674	0	1649	23	0
2	A	31	0	0	2	0
2	B	31	0	0	0	0
3	A	20	0	0	1	0
3	B	21	0	0	1	0
All	All	3542	0	3363	44	0

The all-atom clashscore is defined as the number of clashes found per 1000 atoms (including hydrogen atoms). The all-atom clashscore for this structure is 6.

All (44) close contacts within the same asymmetric unit are listed below, sorted by their clash magnitude.

Atom-1	Atom-2	Interatomic distance (Å)	Clash overlap (Å)
1:B:260:SER:OG	1:B:261:PRO:CD	1.89	1.19
1:B:260:SER:CB	1:B:261:PRO:HD2	1.84	1.06
1:B:260:SER:OG	1:B:261:PRO:HD2	1.52	1.06
1:B:260:SER:OG	1:B:261:PRO:HD3	1.64	0.95
1:B:260:SER:CB	1:B:261:PRO:CD	2.50	0.83
1:B:260:SER:HB3	1:B:261:PRO:HD2	1.59	0.80
1:B:342:THR:HB	1:B:413:THR:HG22	1.66	0.76
1:A:327:TYR:OH	1:A:388:HIS:NE2	2.27	0.64
1:B:295:HIS:ND1	3:B:602:HOH:O	2.31	0.60
1:A:338:HIS:HB2	1:A:370:PHE:CZ	2.38	0.59
1:A:385[A]:ASN:HD21	1:A:389:LYS:HE3	1.66	0.59
1:B:390:LEU:HD11	1:B:403:LEU:HD21	1.88	0.56
1:A:290:ASP:OD1	1:A:446:ARG:NH1	2.35	0.54
1:B:260:SER:HG	1:B:261:PRO:HD2	1.69	0.52
1:B:250[B]:LEU:HD23	1:B:253:HIS:HB2	1.92	0.52

*Continued on next page...*

Continued from previous page...

Atom-1	Atom-2	Interatomic distance (Å)	Clash overlap (Å)
1:B:232:GLU:HB2	1:B:257:HIS:CE1	2.45	0.51
1:B:301:LYS:HE3	1:B:429:GLU:HG3	1.94	0.49
1:A:385[A]:ASN:ND2	1:A:389:LYS:HE3	2.27	0.49
1:A:236:PHE:HB3	1:A:250[A]:LEU:HD23	1.94	0.49
1:A:236:PHE:HB3	1:A:250[B]:LEU:HD12	1.94	0.48
1:A:396:ARG:NH1	3:A:601:HOH:O	2.42	0.47
1:A:234[A]:SER:HB2	1:A:250[A]:LEU:HD22	1.97	0.47
1:A:278:PHE:HB3	1:A:279:PRO:HD2	1.95	0.47
1:A:301:LYS:HE3	1:A:429:GLU:HG3	1.96	0.46
1:A:390:LEU:O	1:A:399:MET:HE2	2.15	0.46
1:B:385[A]:ASN:OD1	1:B:389:LYS:HE2	2.16	0.45
1:B:390:LEU:O	1:B:399:MET:HE2	2.16	0.45
1:A:341:LEU:O	1:A:360:THR:HA	2.17	0.45
1:B:301:LYS:HD3	1:B:427:VAL:HG23	2.00	0.43
1:A:253:HIS:CE1	1:A:255:SER:HB2	2.54	0.43
1:A:329[A]:VAL:HG21	2:A:501:A1CA6:C8	2.49	0.42
1:A:393:LEU:HD12	1:A:399:MET:HA	2.00	0.42
1:B:403:LEU:CD1	1:B:430[B]:VAL:HG23	2.50	0.41
1:A:249:HIS:CD2	1:A:308:TRP:HB3	2.55	0.41
1:A:239:PRO:HD2	1:A:247:GLN:HG3	2.02	0.41
1:A:399:MET:HB3	1:A:430:VAL:HG21	2.02	0.41
1:A:278:PHE:CZ	1:A:425:ALA:HB1	2.56	0.41
1:B:383:LEU:HD23	1:B:383:LEU:HA	1.95	0.41
1:B:400:ASN:OD1	1:B:430[A]:VAL:HG12	2.20	0.41
1:B:237:VAL:HA	1:B:326:PHE:O	2.20	0.40
1:B:347:VAL:HB	1:B:355[A]:VAL:HG22	2.03	0.40
1:A:387:LEU:HD21	2:A:501:A1CA6:O24	2.21	0.40
1:B:278:PHE:O	1:B:279:PRO:C	2.64	0.40
1:B:355[B]:VAL:HG12	1:B:356:GLU:N	2.37	0.40

There are no symmetry-related clashes.

## 5.3 Torsion angles [i](#)

### 5.3.1 Protein backbone [i](#)

In the following table, the Percentiles column shows the percent Ramachandran outliers of the chain as a percentile score with respect to all X-ray entries followed by that with respect to entries of similar resolution.

The Analysed column shows the number of residues for which the backbone conformation was analysed, and the total number of residues.

Mol	Chain	Analysed	Favoured	Allowed	Outliers	Percentiles	
1	A	217/250 (87%)	211 (97%)	6 (3%)	0	100	100
1	B	201/250 (80%)	189 (94%)	12 (6%)	0	100	100
All	All	418/500 (84%)	400 (96%)	18 (4%)	0	100	100

There are no Ramachandran outliers to report.

### 5.3.2 Protein sidechains [i](#)

In the following table, the Percentiles column shows the percent sidechain outliers of the chain as a percentile score with respect to all X-ray entries followed by that with respect to entries of similar resolution.

The Analysed column shows the number of residues for which the sidechain conformation was analysed, and the total number of residues.

Mol	Chain	Analysed	Rotameric	Outliers	Percentiles	
1	A	193/217 (89%)	191 (99%)	2 (1%)	68	86
1	B	187/217 (86%)	175 (94%)	12 (6%)	16	33
All	All	380/434 (88%)	366 (96%)	14 (4%)	33	57

All (14) residues with a non-rotameric sidechain are listed below:

Mol	Chain	Res	Type
1	A	287	GLU
1	A	381	GLU
1	B	247	GLN
1	B	259	PRO
1	B	261	PRO
1	B	277	LYS
1	B	287	GLU
1	B	291	ARG
1	B	329[A]	VAL
1	B	329[B]	VAL
1	B	355[A]	VAL
1	B	355[B]	VAL
1	B	376	ARG
1	B	413	THR

Sometimes sidechains can be flipped to improve hydrogen bonding and reduce clashes. All (4) such sidechains are listed below:

Mol	Chain	Res	Type
1	A	247	GLN
1	A	439	HIS
1	B	256	GLN
1	B	410	GLN

### 5.3.3 RNA [i](#)

There are no RNA molecules in this entry.

## 5.4 Non-standard residues in protein, DNA, RNA chains [i](#)

There are no non-standard protein/DNA/RNA residues in this entry.

## 5.5 Carbohydrates [i](#)

There are no oligosaccharides in this entry.

## 5.6 Ligand geometry [i](#)

2 ligands are modelled in this entry.

In the following table, the Counts columns list the number of bonds (or angles) for which Mogul statistics could be retrieved, the number of bonds (or angles) that are observed in the model and the number of bonds (or angles) that are defined in the Chemical Component Dictionary. The Link column lists molecule types, if any, to which the group is linked. The Z score for a bond length (or angle) is the number of standard deviations the observed value is removed from the expected value. A bond length (or angle) with  $|Z| > 2$  is considered an outlier worth inspection. RMSZ is the root-mean-square of all Z scores of the bond lengths (or angles).

Mol	Type	Chain	Res	Link	Bond lengths			Bond angles		
					Counts	RMSZ	# Z  > 2	Counts	RMSZ	# Z  > 2
2	A1CA6	A	501	-	30,34,34	1.05	1 (3%)	40,51,51	2.94	15 (37%)
2	A1CA6	B	501	1	30,34,34	1.13	2 (6%)	40,51,51	2.57	11 (27%)

In the following table, the Chirals column lists the number of chiral outliers, the number of chiral centers analysed, the number of these observed in the model and the number defined in the Chemical Component Dictionary. Similar counts are reported in the Torsion and Rings columns. '-' means no outliers of that kind were identified.

Mol	Type	Chain	Res	Link	Chirals	Torsions	Rings
2	A1CA6	A	501	-	-	0/15/31/31	0/4/4/4

*Continued on next page...*

Continued from previous page...

Mol	Type	Chain	Res	Link	Chirals	Torsions	Rings
2	A1CA6	B	501	1	-	0/15/31/31	0/4/4/4

All (3) bond length outliers are listed below:

Mol	Chain	Res	Type	Atoms	Z	Observed(Å)	Ideal(Å)
2	A	501	A1CA6	C18-N16	-2.93	1.38	1.42
2	B	501	A1CA6	C18-N16	-2.46	1.39	1.42
2	B	501	A1CA6	O24-C25	2.35	1.44	1.31

All (26) bond angle outliers are listed below:

Mol	Chain	Res	Type	Atoms	Z	Observed(°)	Ideal(°)
2	A	501	A1CA6	C8-N5-C6	-7.89	89.16	94.69
2	B	501	A1CA6	N14-C15-N16	6.61	133.31	125.88
2	B	501	A1CA6	C10-C15-N14	-6.46	120.11	126.97
2	A	501	A1CA6	C7-C8-N5	6.22	93.36	88.22
2	B	501	A1CA6	C18-N16-N17	5.99	124.20	118.99
2	A	501	A1CA6	C7-C6-N5	5.71	92.94	88.22
2	A	501	A1CA6	C10-C15-N14	-5.62	121.01	126.97
2	A	501	A1CA6	N14-C15-N16	5.55	132.12	125.88
2	A	501	A1CA6	C18-N16-N17	5.37	123.65	118.99
2	B	501	A1CA6	C8-N5-C6	-5.23	91.03	94.69
2	B	501	A1CA6	C9-N17-N16	5.04	110.34	105.36
2	B	501	A1CA6	C18-N16-C15	-4.93	126.17	130.55
2	A	501	A1CA6	C9-N17-N16	4.78	110.09	105.36
2	A	501	A1CA6	C18-N16-C15	-4.46	126.59	130.55
2	A	501	A1CA6	C23-C18-N16	-3.80	115.86	119.93
2	B	501	A1CA6	C7-C8-N5	3.68	91.26	88.22
2	A	501	A1CA6	C19-C18-N16	3.19	123.34	119.93
2	A	501	A1CA6	C8-C7-C9	-3.02	111.12	118.27
2	B	501	A1CA6	C7-C9-N17	2.96	123.78	120.22
2	B	501	A1CA6	C13-N14-C15	2.65	121.05	115.05
2	A	501	A1CA6	C13-N14-C15	2.61	120.95	115.05
2	A	501	A1CA6	C6-C7-C9	-2.48	112.40	118.27
2	B	501	A1CA6	C10-C9-N17	-2.44	107.75	110.21
2	A	501	A1CA6	O4-C3-N5	-2.40	118.88	122.67
2	B	501	A1CA6	C7-C6-N5	2.29	90.11	88.22
2	A	501	A1CA6	C10-C9-N17	-2.17	108.02	110.21

There are no chirality outliers.

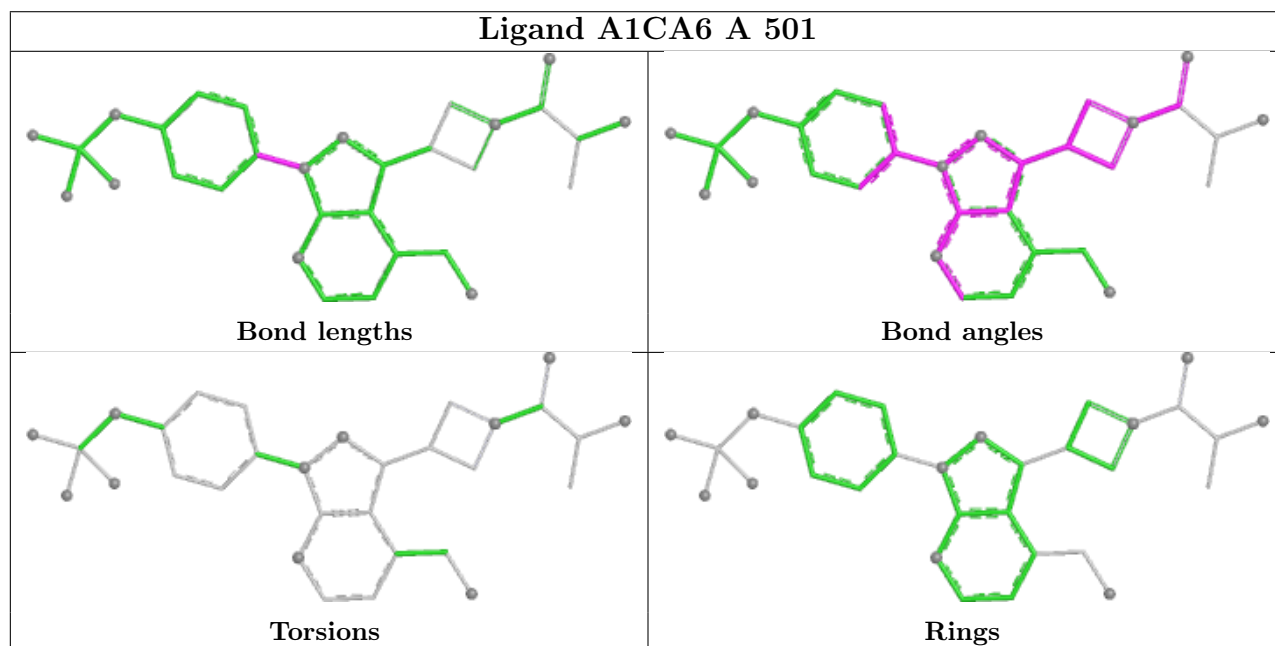
There are no torsion outliers.

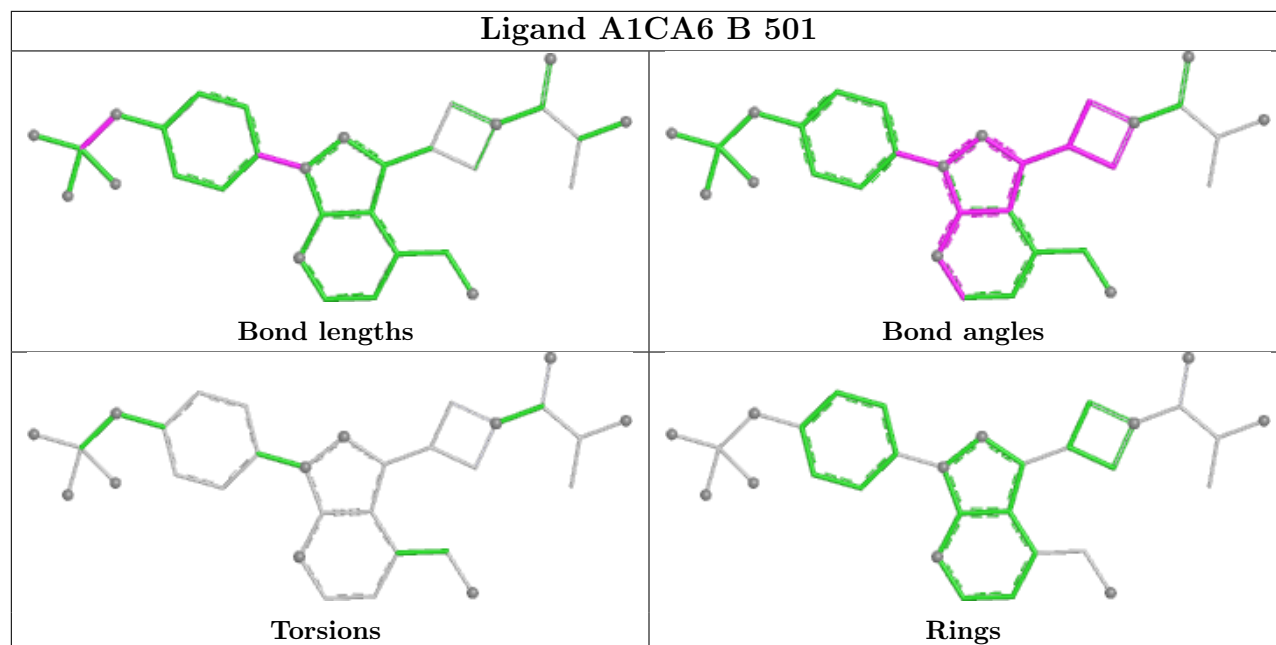
There are no ring outliers.

1 monomer is involved in 2 short contacts:

Mol	Chain	Res	Type	Clashes	Symm-Clashes
2	A	501	A1CA6	2	0

The following is a two-dimensional graphical depiction of Mogul quality analysis of bond lengths, bond angles, torsion angles, and ring geometry for all instances of the Ligand of Interest. In addition, ligands with molecular weight > 250 and outliers as shown on the validation Tables will also be included. For torsion angles, if less than 5% of the Mogul distribution of torsion angles is within 10 degrees of the torsion angle in question, then that torsion angle is considered an outlier. Any bond that is central to one or more torsion angles identified as an outlier by Mogul will be highlighted in the graph. For rings, the root-mean-square deviation (RMSD) between the ring in question and similar rings identified by Mogul is calculated over all ring torsion angles. If the average RMSD is greater than 60 degrees and the minimal RMSD between the ring in question and any Mogul-identified rings is also greater than 60 degrees, then that ring is considered an outlier. The outliers are highlighted in purple. The color gray indicates Mogul did not find sufficient equivalents in the CSD to analyse the geometry.





## 5.7 Other polymers [i](#)

There are no such residues in this entry.

## 5.8 Polymer linkage issues [i](#)

There are no chain breaks in this entry.

## 6 Fit of model and data

### 6.1 Protein, DNA and RNA chains

In the following table, the column labelled ‘#RSRZ > 2’ contains the number (and percentage) of RSRZ outliers, followed by percent RSRZ outliers for the chain as percentile scores relative to all X-ray entries and entries of similar resolution. The OWAB column contains the minimum, median, 95<sup>th</sup> percentile and maximum values of the occupancy-weighted average B-factor per residue. The column labelled ‘Q < 0.9’ lists the number of (and percentage) of residues with an average occupancy less than 0.9.

Mol	Chain	Analysed	<RSRZ>	#RSRZ>2	OWAB(Å <sup>2</sup> )	Q<0.9
1	A	213/250 (85%)	0.20	7 (3%) 49 45	17, 46, 91, 127	11 (5%)
1	B	200/250 (80%)	0.50	20 (10%) 12 10	22, 52, 103, 159	9 (4%)
All	All	413/500 (82%)	0.35	27 (6%) 25 22	17, 49, 96, 159	20 (4%)

All (27) RSRZ outliers are listed below:

Mol	Chain	Res	Type	RSRZ
1	B	279	PRO	4.9
1	B	259	PRO	4.3
1	B	265	PRO	4.2
1	A	259	PRO	3.9
1	A	279	PRO	3.8
1	B	258	CYS	3.8
1	B	309	GLY	3.3
1	A	309	GLY	3.1
1	B	356	GLU	3.1
1	A	263	ALA	3.0
1	B	222	GLY	3.0
1	B	283	GLY	2.9
1	B	261	PRO	2.8
1	B	281	LYS	2.8
1	B	282	LYS	2.6
1	A	280	GLU	2.5
1	B	275	TYR	2.4
1	B	351	GLY	2.4
1	A	258	CYS	2.4
1	B	434	GLU	2.3
1	B	374	LEU	2.3
1	B	260	SER	2.2
1	A	217	ALA	2.1
1	B	257	HIS	2.1

*Continued on next page...*

*Continued from previous page...*

Mol	Chain	Res	Type	RSRZ
1	B	247	GLN	2.0
1	B	362	ARG	2.0
1	B	308	TRP	2.0

## 6.2 Non-standard residues in protein, DNA, RNA chains [i](#)

There are no non-standard protein/DNA/RNA residues in this entry.

## 6.3 Carbohydrates [i](#)

There are no oligosaccharides in this entry.

## 6.4 Ligands [i](#)

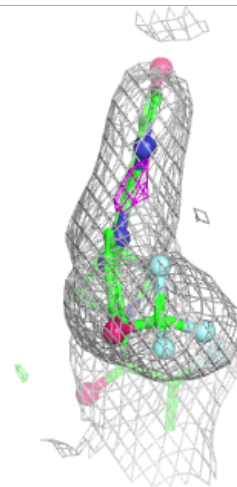
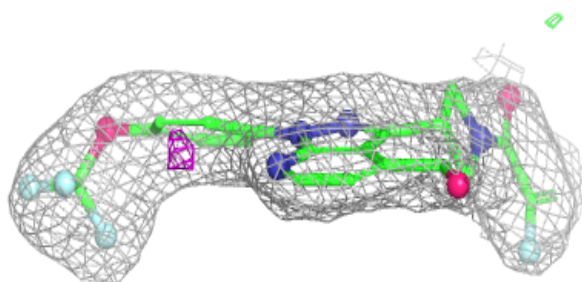
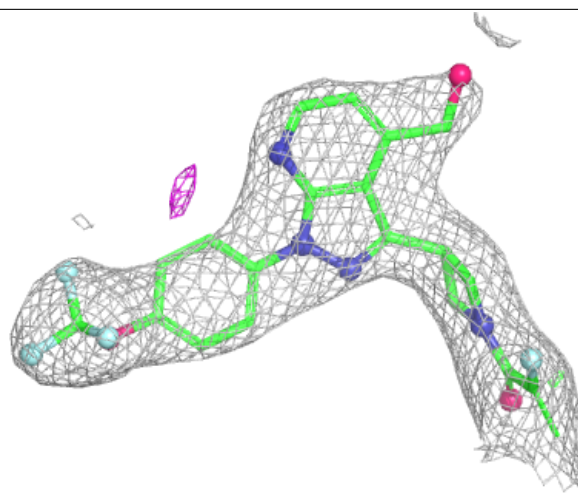
In the following table, the Atoms column lists the number of modelled atoms in the group and the number defined in the chemical component dictionary. The B-factors column lists the minimum, median, 95<sup>th</sup> percentile and maximum values of B factors of atoms in the group. The column labelled 'Q< 0.9' lists the number of atoms with occupancy less than 0.9.

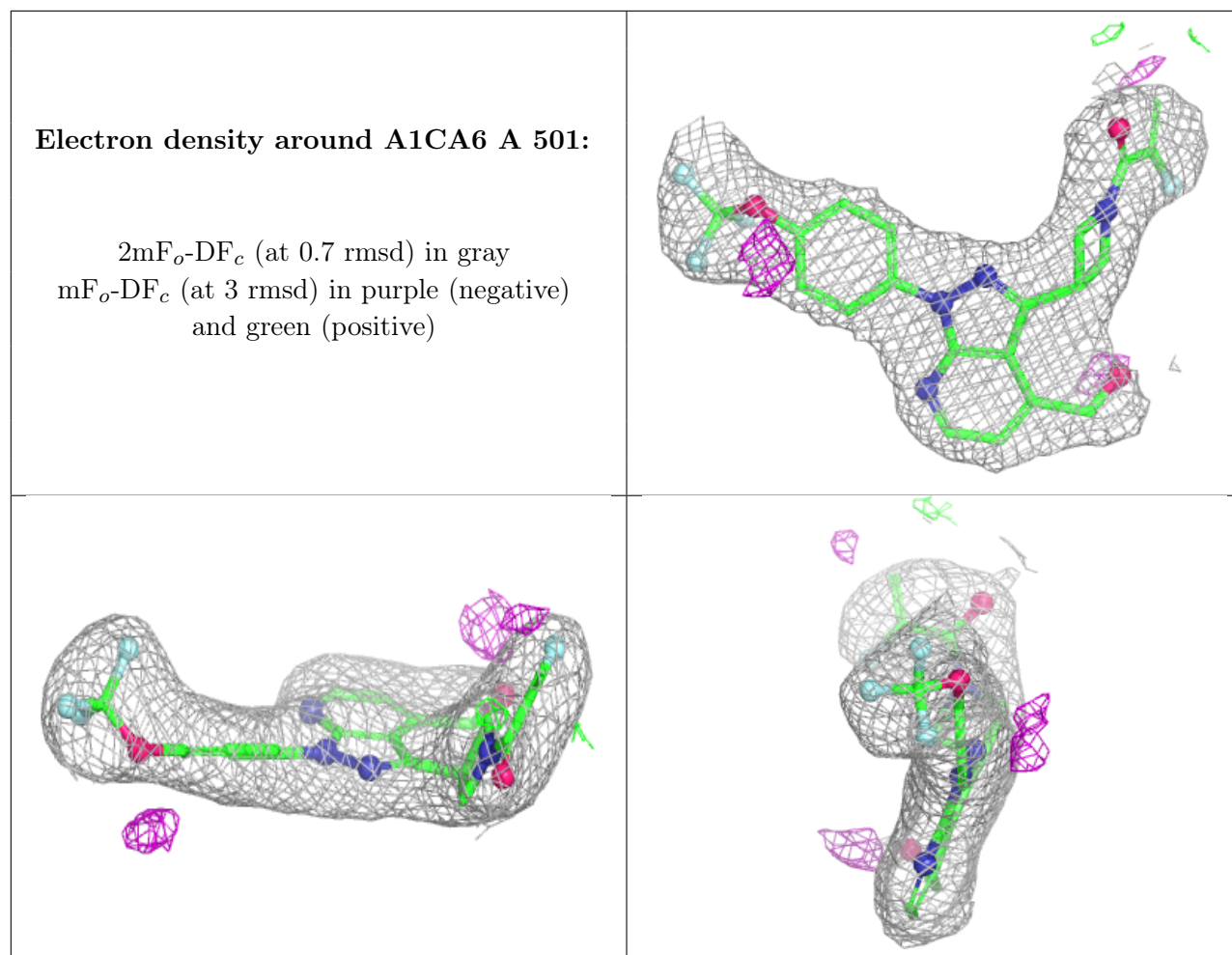
Mol	Type	Chain	Res	Atoms	RSCC	RSR	B-factors( $\text{\AA}^2$ )	Q<0.9
2	A1CA6	B	501	31/31	0.94	0.10	29,40,52,60	31
2	A1CA6	A	501	31/31	0.95	0.08	31,41,63,66	0

The following is a graphical depiction of the model fit to experimental electron density of all instances of the Ligand of Interest. In addition, ligands with molecular weight > 250 and outliers as shown on the geometry validation Tables will also be included. Each fit is shown from different orientation to approximate a three-dimensional view.

**Electron density around A1CA6 B 501:**

$2mF_o-DF_c$  (at 0.7 rmsd) in gray  
 $mF_o-DF_c$  (at 3 rmsd) in purple (negative)  
and green (positive)





## 6.5 Other polymers ⓘ

There are no such residues in this entry.