



Full wwPDB X-ray Structure Validation Report ⓘ

Jun 15, 2026 – 12:32 PM EDT

PDB ID : 9OV2 / pdb_00009ov2
Title : Crystal structure of human IGA2M1 FC fragment-FC-alpha receptor (CD89) complex
Authors : Chandravanshi, M.; Korzeniowski, M.; Tolbert, W.D.; Pazgier, M.
Deposited on : 2025-05-29
Resolution : 2.30 Å (reported)

This is a Full wwPDB X-ray Structure Validation Report for a publicly released PDB entry.

We welcome your comments at validation@mail.wwpdb.org

A user guide is available at

<https://www.wwpdb.org/validation/2017/XrayValidationReportHelp>

with specific help available everywhere you see the ⓘ symbol.

The types of validation reports are described at

<http://www.wwpdb.org/validation/2017/FAQs#types>.

The following versions of software and data (see [references ⓘ](#)) were used in the production of this report:

MolProbity : 4-5-2 with Phenix2.0
Mogul : 2022.3.0, CSD as543be (2022)
Xtriage (Phenix) : 2.0
EDS : 3.0
Percentile statistics : 20250101.v01 (using entries in the PDB archive January 1st 2025)
CCP4 : 9.0.010 (Gargrove)
Density-Fitness : 1.0.12
Ideal geometry (proteins) : Engh & Huber (2001)
Ideal geometry (DNA, RNA) : Parkinson et al. (1996)
Validation Pipeline (wwPDB-VP) : 2.49

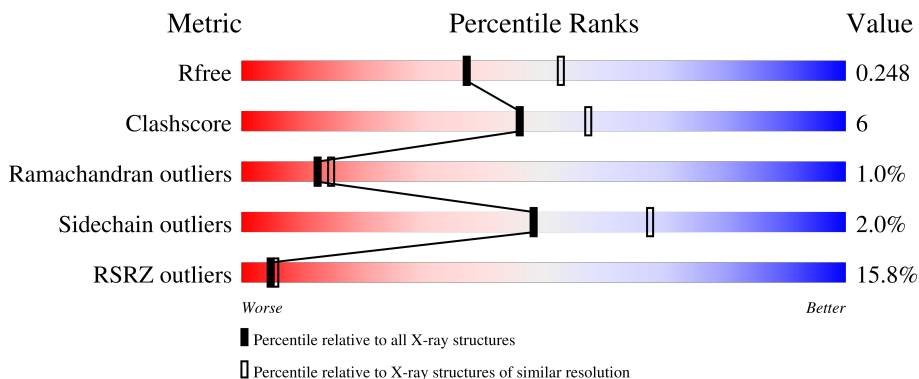
1 Overall quality at a glance

The following experimental techniques were used to determine the structure:

X-RAY DIFFRACTION

The reported resolution of this entry is 2.30 Å.

Percentile scores (ranging between 0-100) for global validation metrics of the entry are shown in the following graphic. The table shows the number of entries on which the scores are based.



Metric	Whole archive (#Entries)	Similar resolution (#Entries, resolution range(Å))
R_{free}	180053	6319 (2.30-2.30)
Clashscore	190562	6919 (2.30-2.30)
Ramachandran outliers	187476	6854 (2.30-2.30)
Sidechain outliers	187428	6854 (2.30-2.30)
RSRZ outliers	180081	6325 (2.30-2.30)

The table below summarises the geometric issues observed across the polymeric chains and their fit to the electron density. The red, orange, yellow and green segments of the lower bar indicate the fraction of residues that contain outliers for ≥ 3 , 2, 1 and 0 types of geometric quality criteria respectively. A grey segment represents the fraction of residues that are not modelled. The numeric value for each fraction is indicated below the corresponding segment, with a dot representing fractions $\leq 5\%$. The upper red bar (where present) indicates the fraction of residues that have poor fit to the electron density. The numeric value is given above the bar.

Mol	Chain	Length	Quality of chain
1	A	214	
2	C	207	
3	G	3	

2 Entry composition [i](#)

There are 6 unique types of molecules in this entry. The entry contains 3338 atoms, of which 0 are hydrogens and 0 are deuteriums.

In the tables below, the ZeroOcc column contains the number of atoms modelled with zero occupancy, the AltConf column contains the number of residues with at least one atom in alternate conformation and the Trace column contains the number of residues modelled with at most 2 atoms.

- Molecule 1 is a protein called IGA2M1 FC FRAGMENT.

Mol	Chain	Residues	Atoms					ZeroOcc	AltConf	Trace
			Total	C	N	O	S			
1	A	209	1608	1012	281	307	8	0	1	0

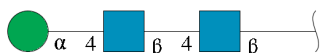
- Molecule 2 is a protein called Immunoglobulin alpha Fc receptor.

Mol	Chain	Residues	Atoms					ZeroOcc	AltConf	Trace
			Total	C	N	O	S			
2	C	195	1560	1000	266	286	8	0	0	0

There are 12 discrepancies between the modelled and reference sequences:

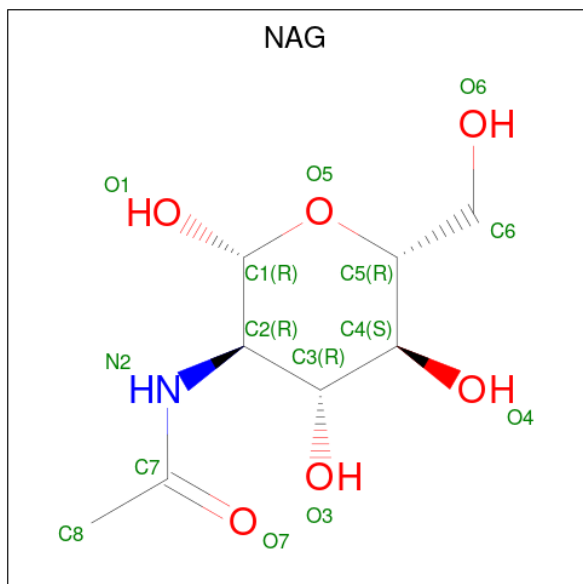
Chain	Residue	Modelled	Actual	Comment	Reference
C	196	ALA	-	expression tag	UNP P24071
C	197	ILE	-	expression tag	UNP P24071
C	198	ASP	-	expression tag	UNP P24071
C	199	GLY	-	expression tag	UNP P24071
C	200	ARG	-	expression tag	UNP P24071
C	201	ALA	-	expression tag	UNP P24071
C	202	HIS	-	expression tag	UNP P24071
C	203	HIS	-	expression tag	UNP P24071
C	204	HIS	-	expression tag	UNP P24071
C	205	HIS	-	expression tag	UNP P24071
C	206	HIS	-	expression tag	UNP P24071
C	207	HIS	-	expression tag	UNP P24071

- Molecule 3 is an oligosaccharide called alpha-D-mannopyranose-(1-4)-2-acetamido-2-deoxy-beta-D-glucopyranose-(1-4)-2-acetamido-2-deoxy-beta-D-glucopyranose.



Mol	Chain	Residues	Atoms				ZeroOcc	AltConf	Trace
			Total	C	N	O			
3	G	3	39	22	2	15	0	0	0

- Molecule 4 is 2-acetamido-2-deoxy-beta-D-glucopyranose (CCD ID: NAG) (formula: $C_8H_{15}NO_6$).



Mol	Chain	Residues	Atoms				ZeroOcc	AltConf
			Total	C	N	O		
4	A	1	14	8	1	5	0	0
4	C	1	14	8	1	5	0	0
4	C	1	14	8	1	5	0	0

- Molecule 5 is CHLORIDE ION (CCD ID: CL) (formula: Cl).

Mol	Chain	Residues	Atoms	ZeroOcc	AltConf
5	A	1	Total Cl 1 1	0	0

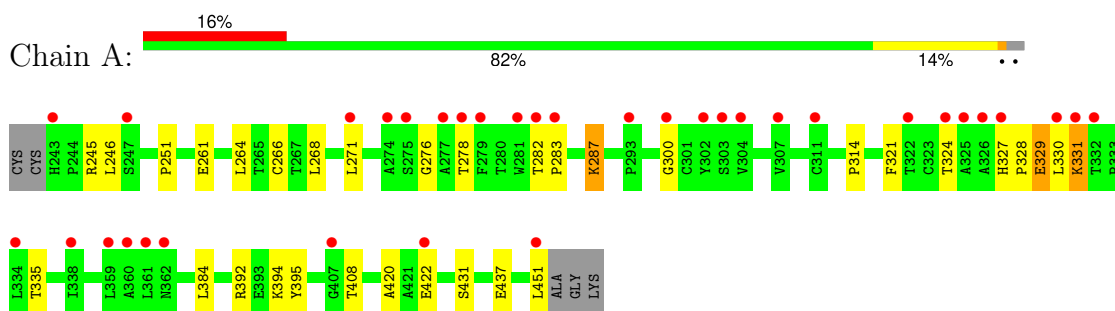
- Molecule 6 is water.

Mol	Chain	Residues	Atoms	ZeroOcc	AltConf
6	A	59	Total O 59 59	0	0
6	C	29	Total O 29 29	0	0

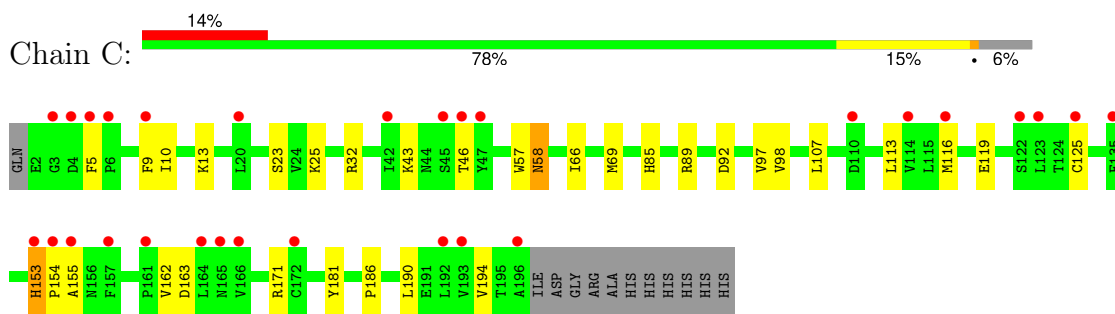
3 Residue-property plots [i](#)

These plots are drawn for all protein, RNA, DNA and oligosaccharide chains in the entry. The first graphic for a chain summarises the proportions of the various outlier classes displayed in the second graphic. The second graphic shows the sequence view annotated by issues in geometry and electron density. Residues are color-coded according to the number of geometric quality criteria for which they contain at least one outlier: green = 0, yellow = 1, orange = 2 and red = 3 or more. A red dot above a residue indicates a poor fit to the electron density ($RSRZ > 2$). Stretches of 2 or more consecutive residues without any outlier are shown as a green connector. Residues present in the sample, but not in the model, are shown in grey.

- Molecule 1: IGA2M1 FC FRAGMENT



- Molecule 2: Immunoglobulin alpha Fc receptor



- Molecule 3: alpha-D-mannopyranose-(1-4)-2-acetamido-2-deoxy-beta-D-glucopyranose-(1-4)-2-acetamido-2-deoxy-beta-D-glucopyranose



4 Data and refinement statistics

Property	Value	Source
Space group	C 2 2 21	Depositor
Cell constants a, b, c, α , β , γ	46.68Å 129.55Å 183.34Å 90.00° 90.00° 90.00°	Depositor
Resolution (Å)	31.91 – 2.30 31.91 – 2.30	Depositor EDS
% Data completeness (in resolution range)	96.2 (31.91-2.30) 96.2 (31.91-2.30)	Depositor EDS
R_{merge}	0.13	Depositor
R_{sym}	(Not available)	Depositor
$\langle I/\sigma(I) \rangle$ ¹	1.37 (at 2.29Å)	Xtrriage
Refinement program	PHENIX (1.21.2_5419: ???)	Depositor
R, R_{free}	0.213 , 0.249 0.214 , 0.248	Depositor DCC
R_{free} test set	1254 reflections (3.08%)	wwPDB-VP
Wilson B-factor (Å ²)	45.8	Xtrriage
Anisotropy	0.674	Xtrriage
Bulk solvent k_{sol} (e/Å ³), B_{sol} (Å ²)	0.30 , 42.6	EDS
L-test for twinning ²	$\langle L \rangle = 0.48$, $\langle L^2 \rangle = 0.31$	Xtrriage
Estimated twinning fraction	No twinning to report.	Xtrriage
F_o, F_c correlation	0.93	EDS
Total number of atoms	3338	wwPDB-VP
Average B, all atoms (Å ²)	63.0	wwPDB-VP

Xtrriage's analysis on translational NCS is as follows: *The largest off-origin peak in the Patterson function is 5.68% of the height of the origin peak. No significant pseudotranslation is detected.*

¹Intensities estimated from amplitudes.

²Theoretical values of $\langle |L| \rangle$, $\langle L^2 \rangle$ for acentric reflections are 0.5, 0.333 respectively for untwinned datasets, and 0.375, 0.2 for perfectly twinned datasets.

5 Model quality [i](#)

5.1 Standard geometry [i](#)

Bond lengths and bond angles in the following residue types are not validated in this section: CL, MAN, NAG

The Z score for a bond length (or angle) is the number of standard deviations the observed value is removed from the expected value. A bond length (or angle) with $|Z| > 5$ is considered an outlier worth inspection. RMSZ is the root-mean-square of all Z scores of the bond lengths (or angles).

Mol	Chain	Bond lengths		Bond angles	
		RMSZ	# Z >5	RMSZ	# Z >5
1	A	0.23	0/1649	0.52	1/2253 (0.0%)
2	C	0.23	0/1604	0.47	1/2177 (0.0%)
All	All	0.23	0/3253	0.50	2/4430 (0.0%)

There are no bond length outliers.

All (2) bond angle outliers are listed below:

Mol	Chain	Res	Type	Atoms	Z	Observed(°)	Ideal(°)
1	A	300	GLY	N-CA-C	7.40	116.95	110.21
2	C	153	HIS	CA-CB-CG	-6.11	107.69	113.80

There are no chirality outliers.

There are no planarity outliers.

5.2 Too-close contacts [i](#)

In the following table, the Non-H and H(model) columns list the number of non-hydrogen atoms and hydrogen atoms in the chain respectively. The H(added) column lists the number of hydrogen atoms added and optimized by MolProbity. The Clashes column lists the number of clashes within the asymmetric unit, whereas Symm-Clashes lists symmetry-related clashes.

Mol	Chain	Non-H	H(model)	H(added)	Clashes	Symm-Clashes
1	A	1608	0	1583	19	0
2	C	1560	0	1514	19	0
3	G	39	0	34	0	0
4	A	14	0	13	0	0
4	C	28	0	26	0	0
5	A	1	0	0	0	0
6	A	59	0	0	0	0

Continued on next page...

Continued from previous page...

Mol	Chain	Non-H	H(model)	H(added)	Clashes	Symm-Clashes
6	C	29	0	0	0	0
All	All	3338	0	3170	37	0

The all-atom clashscore is defined as the number of clashes found per 1000 atoms (including hydrogen atoms). The all-atom clashscore for this structure is 6.

All (37) close contacts within the same asymmetric unit are listed below, sorted by their clash magnitude.

Atom-1	Atom-2	Interatomic distance (Å)	Clash overlap (Å)
1:A:324:THR:HG22	1:A:335:THR:HB	1.64	0.76
1:A:437:GLU:HA	2:C:85:HIS:CE1	2.25	0.71
2:C:69:MET:HE3	2:C:98:VAL:HB	1.78	0.66
2:C:5:PHE:CE1	2:C:89:ARG:HG2	2.36	0.59
1:A:282:THR:OG1	1:A:283:PRO:HD3	2.03	0.58
2:C:125:CYS:O	2:C:154:PRO:O	2.22	0.58
1:A:287:LYS:HE3	1:A:314:PRO:HG3	1.86	0.57
2:C:116:MET:O	2:C:119:GLU:HG3	2.05	0.57
2:C:10:ILE:HG22	2:C:92:ASP:OD2	2.06	0.56
2:C:32:ARG:HD2	2:C:58:ASN:HA	1.88	0.56
1:A:245:ARG:O	1:A:268:LEU:HD23	2.11	0.51
1:A:268:LEU:HB3	1:A:271:LEU:HD11	1.92	0.51
1:A:327:HIS:CG	1:A:328:PRO:HD2	2.46	0.51
2:C:13:LYS:HD3	2:C:25:LYS:HB3	1.95	0.48
2:C:113:LEU:HD11	2:C:190:LEU:HD22	1.95	0.48
1:A:251:PRO:HG3	1:A:264:LEU:HD12	1.97	0.47
2:C:119:GLU:O	2:C:162:VAL:HG22	2.15	0.46
2:C:97:VAL:HG12	2:C:181:TYR:HA	1.96	0.45
1:A:327:HIS:ND1	1:A:328:PRO:HD2	2.32	0.44
2:C:9:PHE:HD2	2:C:92:ASP:OD1	2.01	0.44
2:C:125:CYS:O	2:C:155:ALA:HB3	2.18	0.44
1:A:420:ALA:HB1	1:A:422:GLU:CD	2.43	0.44
1:A:392:ARG:H	1:A:392:ARG:HG2	1.58	0.43
1:A:384:LEU:HB2	1:A:431:SER:HB2	2.00	0.43
1:A:261:GLU:O	1:A:261:GLU:HG3	2.19	0.42
2:C:107:LEU:HG	2:C:190:LEU:HD12	2.01	0.42
1:A:394:LYS:HA	1:A:394:LYS:HD3	1.68	0.42
2:C:32:ARG:HD3	2:C:57:TRP:O	2.20	0.41
2:C:43:LYS:O	2:C:46:THR:HG22	2.19	0.41
2:C:163:ASP:O	2:C:194:VAL:HG11	2.20	0.41
1:A:246:LEU:HD11	1:A:266:CYS:SG	2.60	0.41
1:A:283:PRO:HG2	1:A:321:PHE:CD2	2.55	0.41

Continued on next page...

Continued from previous page...

Atom-1	Atom-2	Interatomic distance (Å)	Clash overlap (Å)
2:C:153:HIS:O	2:C:154:PRO:C	2.64	0.41
2:C:171:ARG:HD3	2:C:186:PRO:HB2	2.03	0.40
1:A:392:ARG:HA	1:A:395:TYR:CZ	2.56	0.40
1:A:330:LEU:O	1:A:331:LYS:HB2	2.22	0.40
1:A:246:LEU:HD13	1:A:268:LEU:HG	2.04	0.40

There are no symmetry-related clashes.

5.3 Torsion angles [i](#)

5.3.1 Protein backbone [i](#)

In the following table, the Percentiles column shows the percent Ramachandran outliers of the chain as a percentile score with respect to all X-ray entries followed by that with respect to entries of similar resolution.

The Analysed column shows the number of residues for which the backbone conformation was analysed, and the total number of residues.

Mol	Chain	Analysed	Favoured	Allowed	Outliers	Percentiles	
1	A	208/214 (97%)	187 (90%)	17 (8%)	4 (2%)	6	5
2	C	193/207 (93%)	180 (93%)	13 (7%)	0	100	100
All	All	401/421 (95%)	367 (92%)	30 (8%)	4 (1%)	12	15

All (4) Ramachandran outliers are listed below:

Mol	Chain	Res	Type
1	A	329	GLU
1	A	331	LYS
1	A	276	GLY
1	A	287	LYS

5.3.2 Protein sidechains [i](#)

In the following table, the Percentiles column shows the percent sidechain outliers of the chain as a percentile score with respect to all X-ray entries followed by that with respect to entries of similar resolution.

The Analysed column shows the number of residues for which the sidechain conformation was analysed, and the total number of residues.

Mol	Chain	Analysed	Rotameric	Outliers	Percentiles	
1	A	179/181 (99%)	175 (98%)	4 (2%)	45	65
2	C	170/180 (94%)	167 (98%)	3 (2%)	51	70
All	All	349/361 (97%)	342 (98%)	7 (2%)	48	67

All (7) residues with a non-rotameric sidechain are listed below:

Mol	Chain	Res	Type
1	A	278	THR
1	A	329	GLU
1	A	408	THR
1	A	451	LEU
2	C	23	SER
2	C	58	ASN
2	C	66	ILE

Sometimes sidechains can be flipped to improve hydrogen bonding and reduce clashes. All (4) such sidechains are listed below:

Mol	Chain	Res	Type
1	A	327	HIS
1	A	350	HIS
2	C	27	GLN
2	C	38	GLN

5.3.3 RNA [i](#)

There are no RNA molecules in this entry.

5.4 Non-standard residues in protein, DNA, RNA chains [i](#)

There are no non-standard protein/DNA/RNA residues in this entry.

5.5 Carbohydrates [i](#)

3 monosaccharides are modelled in this entry.

In the following table, the Counts columns list the number of bonds (or angles) for which Mogul statistics could be retrieved, the number of bonds (or angles) that are observed in the model and the number of bonds (or angles) that are defined in the Chemical Component Dictionary. The Link column lists molecule types, if any, to which the group is linked. The Z score for a bond length (or angle) is the number of standard deviations the observed value is removed from the

expected value. A bond length (or angle) with $|Z| > 2$ is considered an outlier worth inspection. RMSZ is the root-mean-square of all Z scores of the bond lengths (or angles).

Mol	Type	Chain	Res	Link	Bond lengths			Bond angles		
					Counts	RMSZ	$\# Z > 2$	Counts	RMSZ	$\# Z > 2$
3	NAG	G	1	1,3	14,14,15	0.71	0	17,19,21	1.00	1 (5%)
3	NAG	G	2	3	14,14,15	0.74	0	17,19,21	0.97	1 (5%)
3	MAN	G	3	3	11,11,12	0.62	0	15,15,17	1.27	1 (6%)

In the following table, the Chirals column lists the number of chiral outliers, the number of chiral centers analysed, the number of these observed in the model and the number defined in the Chemical Component Dictionary. Similar counts are reported in the Torsion and Rings columns. '-' means no outliers of that kind were identified.

Mol	Type	Chain	Res	Link	Chirals	Torsions	Rings
3	NAG	G	1	1,3	-	0/6/23/26	0/1/1/1
3	NAG	G	2	3	-	1/6/23/26	0/1/1/1
3	MAN	G	3	3	-	2/2/19/22	1/1/1/1

There are no bond length outliers.

All (3) bond angle outliers are listed below:

Mol	Chain	Res	Type	Atoms	Z	Observed($^{\circ}$)	Ideal($^{\circ}$)
3	G	3	MAN	C1-O5-C5	3.86	117.36	112.19
3	G	1	NAG	C2-N2-C7	2.16	125.80	122.90
3	G	2	NAG	C1-O5-C5	2.06	114.94	112.19

There are no chirality outliers.

All (3) torsion outliers are listed below:

Mol	Chain	Res	Type	Atoms
3	G	3	MAN	C4-C5-C6-O6
3	G	3	MAN	O5-C5-C6-O6
3	G	2	NAG	O5-C5-C6-O6

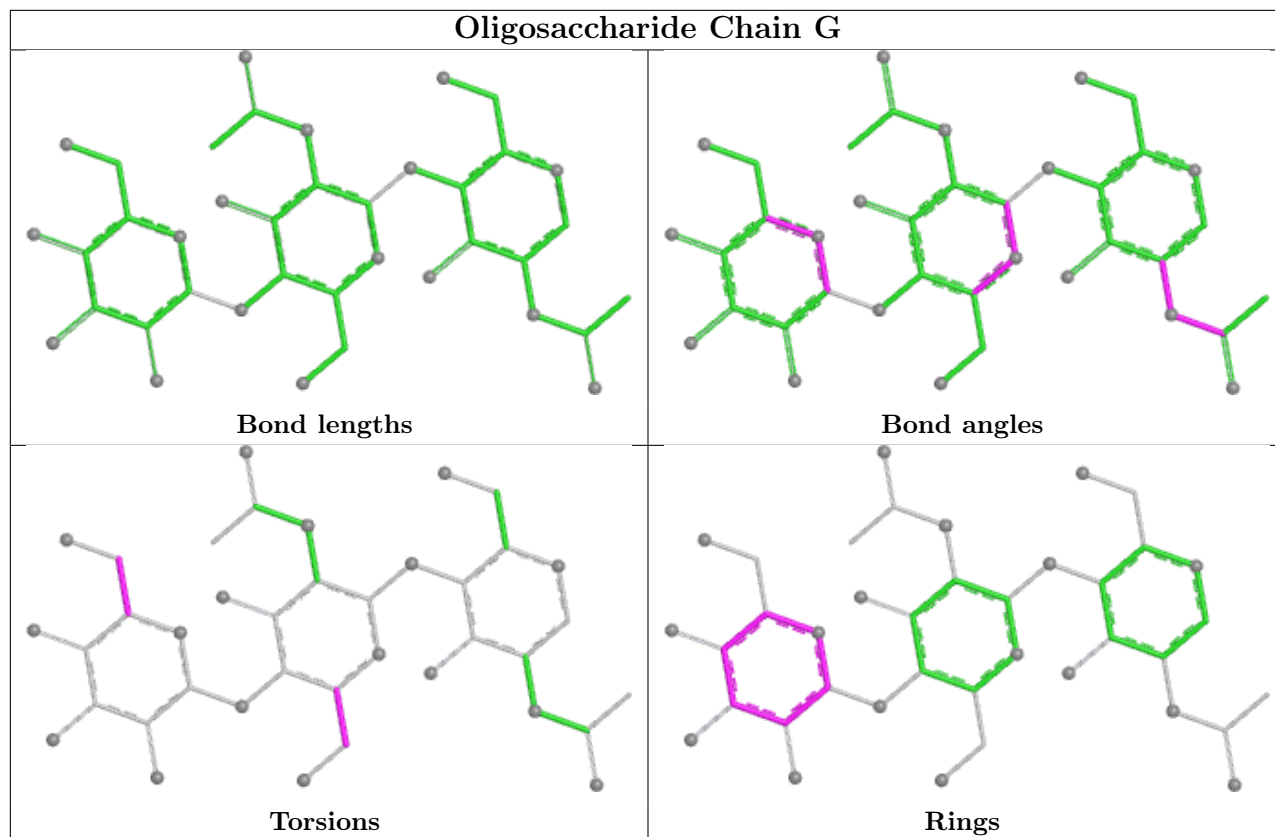
All (1) ring outliers are listed below:

Mol	Chain	Res	Type	Atoms
3	G	3	MAN	C1-C2-C3-C4-C5-O5

No monomer is involved in short contacts.

The following is a two-dimensional graphical depiction of Mogul quality analysis of bond lengths,

bond angles, torsion angles, and ring geometry for oligosaccharide.



5.6 Ligand geometry [i](#)

Of 4 ligands modelled in this entry, 1 is monoatomic - leaving 3 for Mogul analysis.

In the following table, the Counts columns list the number of bonds (or angles) for which Mogul statistics could be retrieved, the number of bonds (or angles) that are observed in the model and the number of bonds (or angles) that are defined in the Chemical Component Dictionary. The Link column lists molecule types, if any, to which the group is linked. The Z score for a bond length (or angle) is the number of standard deviations the observed value is removed from the expected value. A bond length (or angle) with $|Z| > 2$ is considered an outlier worth inspection. RMSZ is the root-mean-square of all Z scores of the bond lengths (or angles).

Mol	Type	Chain	Res	Link	Bond lengths			Bond angles		
					Counts	RMSZ	$\# Z > 2$	Counts	RMSZ	$\# Z > 2$
4	NAG	C	301	2	14,14,15	0.77	1 (7%)	17,19,21	1.75	3 (17%)
4	NAG	C	302	2	14,14,15	0.77	0	17,19,21	1.14	1 (5%)
4	NAG	A	701	1	14,14,15	0.70	0	17,19,21	1.03	1 (5%)

In the following table, the Chirals column lists the number of chiral outliers, the number of chiral centers analysed, the number of these observed in the model and the number defined in the Chemical Component Dictionary. Similar counts are reported in the Torsion and Rings columns.

'-' means no outliers of that kind were identified.

Mol	Type	Chain	Res	Link	Chirals	Torsions	Rings
4	NAG	C	301	2	-	2/6/23/26	0/1/1/1
4	NAG	C	302	2	-	0/6/23/26	0/1/1/1
4	NAG	A	701	1	-	1/6/23/26	0/1/1/1

All (1) bond length outliers are listed below:

Mol	Chain	Res	Type	Atoms	Z	Observed(Å)	Ideal(Å)
4	C	301	NAG	C1-C2	2.01	1.55	1.52

All (5) bond angle outliers are listed below:

Mol	Chain	Res	Type	Atoms	Z	Observed(°)	Ideal(°)
4	C	301	NAG	C1-O5-C5	4.21	117.83	112.19
4	C	301	NAG	O5-C1-C2	-3.53	105.84	111.29
4	C	301	NAG	C1-C2-N2	3.46	115.89	110.43
4	C	302	NAG	C1-O5-C5	2.83	115.97	112.19
4	A	701	NAG	C2-N2-C7	2.14	125.76	122.90

There are no chirality outliers.

All (3) torsion outliers are listed below:

Mol	Chain	Res	Type	Atoms
4	C	301	NAG	C8-C7-N2-C2
4	C	301	NAG	O7-C7-N2-C2
4	A	701	NAG	O5-C5-C6-O6

There are no ring outliers.

No monomer is involved in short contacts.

5.7 Other polymers [i](#)

There are no such residues in this entry.

5.8 Polymer linkage issues [i](#)

There are no chain breaks in this entry.

6 Fit of model and data

6.1 Protein, DNA and RNA chains

In the following table, the column labelled ‘#RSRZ > 2’ contains the number (and percentage) of RSRZ outliers, followed by percent RSRZ outliers for the chain as percentile scores relative to all X-ray entries and entries of similar resolution. The OWAB column contains the minimum, median, 95th percentile and maximum values of the occupancy-weighted average B-factor per residue. The column labelled ‘Q < 0.9’ lists the number of (and percentage) of residues with an average occupancy less than 0.9.

Mol	Chain	Analysed	<RSRZ>	#RSRZ>2	OWAB(Å ²)	Q<0.9
1	A	209/214 (97%)	0.93	35 (16%) 4 5	20, 56, 117, 152	1 (0%)
2	C	195/207 (94%)	1.00	29 (14%) 5 6	36, 57, 104, 119	0
All	All	404/421 (95%)	0.96	64 (15%) 5 5	20, 57, 111, 152	1 (0%)

All (64) RSRZ outliers are listed below:

Mol	Chain	Res	Type	RSRZ
2	C	154	PRO	5.7
2	C	6	PRO	5.0
1	A	361	LEU	4.8
2	C	153	HIS	4.6
2	C	196	ALA	4.5
2	C	172	CYS	4.3
1	A	330	LEU	4.3
1	A	360	ALA	4.2
1	A	326	ALA	4.2
1	A	451	LEU	4.1
2	C	125	CYS	4.1
1	A	362	ASN	3.5
1	A	247	SER	3.4
1	A	359	LEU	3.4
2	C	5	PHE	3.3
2	C	4	ASP	3.2
1	A	282	THR	3.2
2	C	116	MET	3.1
1	A	331	LYS	3.1
2	C	122	SER	3.0
2	C	161	PRO	3.0
2	C	3	GLY	2.9
2	C	42	ILE	2.8
1	A	283	PRO	2.8

Continued on next page...

Continued from previous page...

Mol	Chain	Res	Type	RSRZ
2	C	9	PHE	2.8
2	C	164	LEU	2.8
1	A	325	ALA	2.7
1	A	275	SER	2.7
1	A	271	LEU	2.7
2	C	114	VAL	2.7
1	A	304	VAL	2.6
2	C	193	VAL	2.6
1	A	332	THR	2.6
1	A	279	PHE	2.6
1	A	293	PRO	2.5
1	A	277	ALA	2.5
2	C	46	THR	2.5
2	C	45	SER	2.5
1	A	334	LEU	2.5
1	A	327	HIS	2.5
1	A	243	HIS	2.4
1	A	324	THR	2.4
1	A	307	VAL	2.4
1	A	300	GLY	2.3
2	C	135	PHE	2.3
2	C	157	PHE	2.3
2	C	166	VAL	2.3
1	A	422	GLU	2.3
2	C	47	TYR	2.3
1	A	278	THR	2.3
2	C	123	LEU	2.2
1	A	274	ALA	2.2
2	C	20	LEU	2.2
1	A	322	THR	2.2
2	C	155	ALA	2.2
2	C	110	ASP	2.1
1	A	281	TRP	2.1
1	A	407	GLY	2.1
1	A	303	SER	2.1
2	C	165	ASN	2.1
1	A	302	TYR	2.1
1	A	338	ILE	2.0
1	A	311	CYS	2.0
2	C	192	LEU	2.0

6.2 Non-standard residues in protein, DNA, RNA chains [i](#)

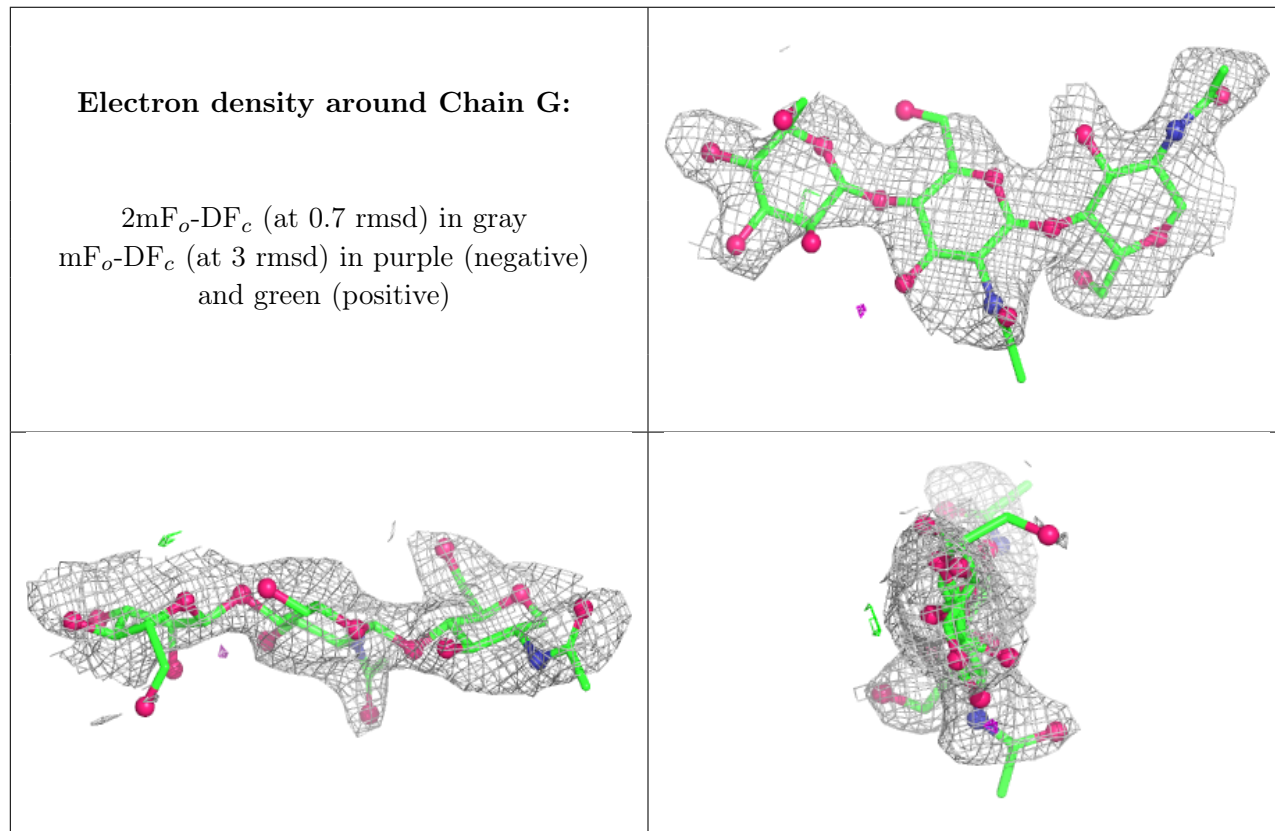
There are no non-standard protein/DNA/RNA residues in this entry.

6.3 Carbohydrates [i](#)

In the following table, the Atoms column lists the number of modelled atoms in the group and the number defined in the chemical component dictionary. The B-factors column lists the minimum, median, 95th percentile and maximum values of B factors of atoms in the group. The column labelled 'Q< 0.9' lists the number of atoms with occupancy less than 0.9.

Mol	Type	Chain	Res	Atoms	RSCC	RSR	B-factors(Å ²)	Q<0.9
3	NAG	G	1	14/15	-	-	73,82,87,93	0
3	NAG	G	2	14/15	-	-	84,99,116,118	0
3	MAN	G	3	11/12	-	-	114,121,124,125	0

The following is a graphical depiction of the model fit to experimental electron density for oligosaccharide. Each fit is shown from different orientation to approximate a three-dimensional view.



6.4 Ligands [i](#)

In the following table, the Atoms column lists the number of modelled atoms in the group and the number defined in the chemical component dictionary. The B-factors column lists the minimum, median, 95th percentile and maximum values of B factors of atoms in the group. The column labelled 'Q< 0.9' lists the number of atoms with occupancy less than 0.9.

Mol	Type	Chain	Res	Atoms	RSCC	RSR	B-factors(Å ²)	Q<0.9
4	NAG	C	301	14/15	0.55	0.14	74,96,101,104	0
4	NAG	A	701	14/15	0.65	0.15	80,98,102,107	0
4	NAG	C	302	14/15	0.68	0.14	84,96,108,110	0
5	CL	A	702	1/1	0.99	0.03	30,30,30,30	1

6.5 Other polymers [i](#)

There are no such residues in this entry.