



Full wwPDB X-ray Structure Validation Report ⓘ

Dec 22, 2025 – 12:16 PM EST

PDB ID : 9P8X / pdb_00009p8x
Title : Crystal structure of GITR in complex with ligand-non-competitive Ab#1 Fab fragment
Authors : Huang, C.-S.; Mosyak, L.; Maben, Z.
Deposited on : 2025-06-23
Resolution : 2.86 Å(reported)

This is a Full wwPDB X-ray Structure Validation Report for a publicly released PDB entry.

We welcome your comments at validation@mail.wwpdb.org

A user guide is available at

<https://www.wwpdb.org/validation/2017/XrayValidationReportHelp>

with specific help available everywhere you see the ⓘ symbol.

The types of validation reports are described at

<http://www.wwpdb.org/validation/2017/FAQs#types>.

The following versions of software and data (see [references ⓘ](#)) were used in the production of this report:

MolProbity : 4-5-2 with Phenix2.0
Mogul : 2022.3.0, CSD as543be (2022)
Xtriage (Phenix) : 2.0
EDS : 3.0
Percentile statistics : 20231227.v01 (using entries in the PDB archive December 27th 2023)
CCP4 : 9.0.010 (Gargrove)
Density-Fitness : 1.0.12
Ideal geometry (proteins) : Engh & Huber (2001)
Ideal geometry (DNA, RNA) : Parkinson et al. (1996)
Validation Pipeline (wwPDB-VP) : 2.47

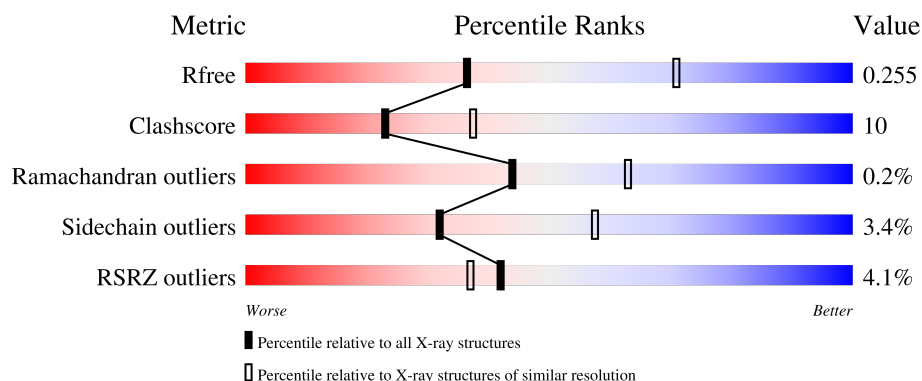
1 Overall quality at a glance

The following experimental techniques were used to determine the structure:

X-RAY DIFFRACTION

The reported resolution of this entry is 2.86 Å.

Percentile scores (ranging between 0-100) for global validation metrics of the entry are shown in the following graphic. The table shows the number of entries on which the scores are based.



Metric	Whole archive (#Entries)	Similar resolution (#Entries, resolution range(Å))
R_{free}	164625	1268 (2.88-2.84)
Clashscore	180529	1351 (2.88-2.84)
Ramachandran outliers	177936	1318 (2.88-2.84)
Sidechain outliers	177891	1319 (2.88-2.84)
RSRZ outliers	164620	1269 (2.88-2.84)

The table below summarises the geometric issues observed across the polymeric chains and their fit to the electron density. The red, orange, yellow and green segments of the lower bar indicate the fraction of residues that contain outliers for ≥ 3 , 2, 1 and 0 types of geometric quality criteria respectively. A grey segment represents the fraction of residues that are not modelled. The numeric value for each fraction is indicated below the corresponding segment, with a dot representing fractions $\leq 5\%$. The upper red bar (where present) indicates the fraction of residues that have poor fit to the electron density. The numeric value is given above the bar.

Mol	Chain	Length	Quality of chain
1	H	225	
2	L	213	
3	A	130	

2 Entry composition

There are 6 unique types of molecules in this entry. The entry contains 4229 atoms, of which 0 are hydrogens and 0 are deuteriums.

In the tables below, the ZeroOcc column contains the number of atoms modelled with zero occupancy, the AltConf column contains the number of residues with at least one atom in alternate conformation and the Trace column contains the number of residues modelled with at most 2 atoms.

- Molecule 1 is a protein called Ab#1-Fab Heavy Chain.

Mol	Chain	Residues	Atoms					ZeroOcc	AltConf	Trace
1	H	225	Total	C	N	O	S	0	0	0
			1684	1069	275	334	6			

- Molecule 2 is a protein called Ab#1-Fab Light Chain.

Mol	Chain	Residues	Atoms					ZeroOcc	AltConf	Trace
2	L	213	Total	C	N	O	S	0	0	0
			1624	1019	269	329	7			

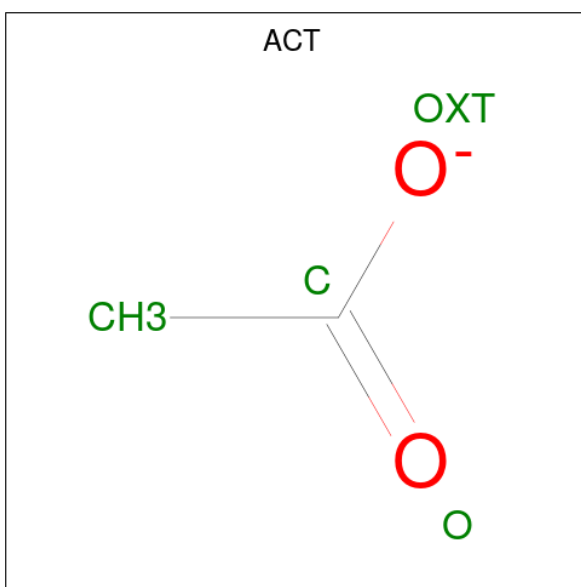
- Molecule 3 is a protein called Tumor necrosis factor receptor superfamily member 18.

Mol	Chain	Residues	Atoms					ZeroOcc	AltConf	Trace
3	A	118	Total	C	N	O	S	0	0	0
			874	534	160	161	19			

There is a discrepancy between the modelled and reference sequences:

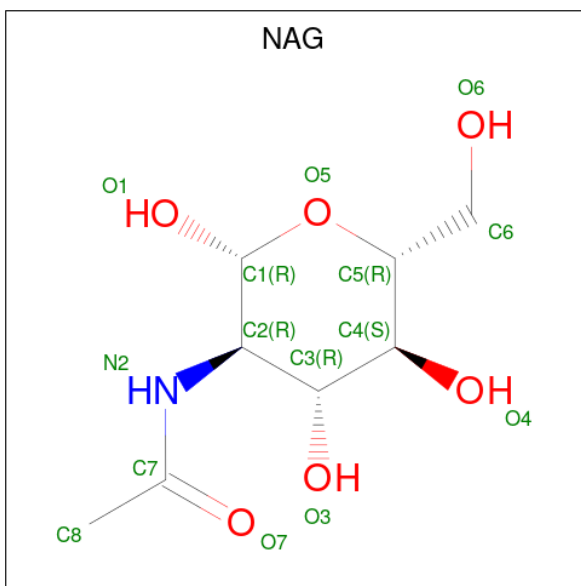
Chain	Residue	Modelled	Actual	Comment	Reference
A	57	SER	CYS	conflict	UNP Q9Y5U5

- Molecule 4 is ACETATE ION (CCD ID: ACT) (formula: C₂H₃O₂).



Mol	Chain	Residues	Atoms			ZeroOcc	AltConf
4	H	1	Total	C	O	0	0
			4	2	2		

- Molecule 5 is 2-acetamido-2-deoxy-beta-D-glucopyranose (CCD ID: NAG) (formula: C₈H₁₅NO₆).



Mol	Chain	Residues	Atoms				ZeroOcc	AltConf
5	A	1	Total	C	N	O	0	0
			14	8	1	5		

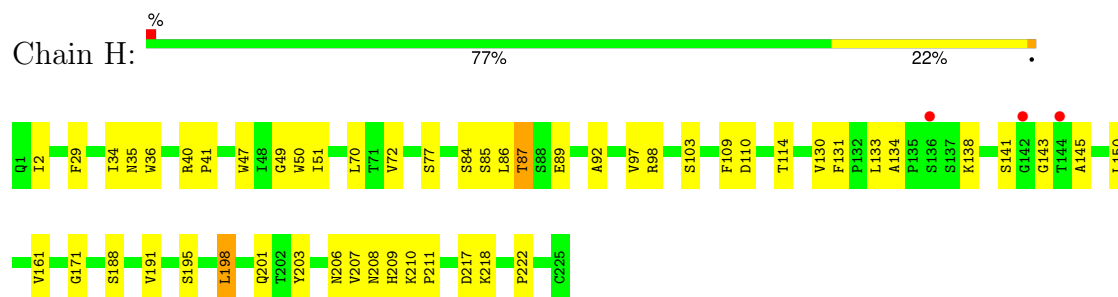
- Molecule 6 is water.

Mol	Chain	Residues	Atoms		ZeroOcc	AltConf
6	H	17	Total 17	O 17	0	0
6	L	12	Total 12	O 12	0	0

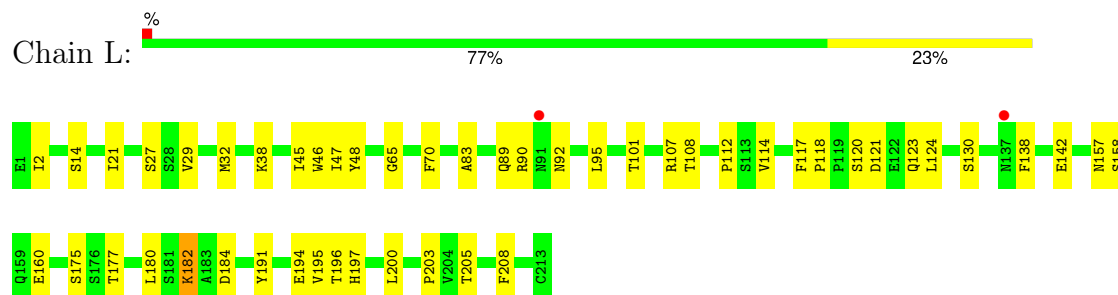
3 Residue-property plots [i](#)

These plots are drawn for all protein, RNA, DNA and oligosaccharide chains in the entry. The first graphic for a chain summarises the proportions of the various outlier classes displayed in the second graphic. The second graphic shows the sequence view annotated by issues in geometry and electron density. Residues are color-coded according to the number of geometric quality criteria for which they contain at least one outlier: green = 0, yellow = 1, orange = 2 and red = 3 or more. A red dot above a residue indicates a poor fit to the electron density ($RSRZ > 2$). Stretches of 2 or more consecutive residues without any outlier are shown as a green connector. Residues present in the sample, but not in the model, are shown in grey.

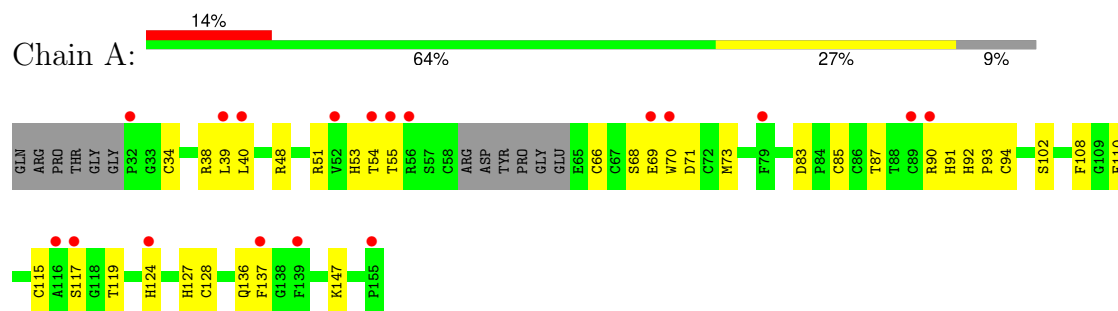
- Molecule 1: Ab#1-Fab Heavy Chain



- Molecule 2: Ab#1-Fab Light Chain



- Molecule 3: Tumor necrosis factor receptor superfamily member 18



4 Data and refinement statistics

Property	Value	Source
Space group	P 61 2 2	Depositor
Cell constants a, b, c, α , β , γ	113.20Å 113.20Å 219.66Å 90.00° 90.00° 120.00°	Depositor
Resolution (Å)	44.76 – 2.86 44.76 – 2.86	Depositor EDS
% Data completeness (in resolution range)	93.8 (44.76-2.86) 93.8 (44.76-2.86)	Depositor EDS
R_{merge}	0.02	Depositor
R_{sym}	(Not available)	Depositor
$\langle I/\sigma(I) \rangle$ ¹	2.44 (at 2.86Å)	Xtriage
Refinement program	PHENIX 1.20.1_4487	Depositor
R, R_{free}	0.214 , 0.257 0.214 , 0.255	Depositor DCC
R_{free} test set	862 reflections (4.31%)	wwPDB-VP
Wilson B-factor (Å ²)	77.4	Xtriage
Anisotropy	0.198	Xtriage
Bulk solvent k_{sol} (e/Å ³), B_{sol} (Å ²)	0.30 , 86.5	EDS
L-test for twinning ²	$\langle L \rangle = 0.48$, $\langle L^2 \rangle = 0.31$	Xtriage
Estimated twinning fraction	No twinning to report.	Xtriage
F_o, F_c correlation	0.93	EDS
Total number of atoms	4229	wwPDB-VP
Average B, all atoms (Å ²)	109.0	wwPDB-VP

Xtriage's analysis on translational NCS is as follows: *The largest off-origin peak in the Patterson function is 4.17% of the height of the origin peak. No significant pseudotranslation is detected.*

¹Intensities estimated from amplitudes.

²Theoretical values of $\langle |L| \rangle$, $\langle L^2 \rangle$ for acentric reflections are 0.5, 0.333 respectively for untwinned datasets, and 0.375, 0.2 for perfectly twinned datasets.

5 Model quality

5.1 Standard geometry

Bond lengths and bond angles in the following residue types are not validated in this section: ACT, NAG

The Z score for a bond length (or angle) is the number of standard deviations the observed value is removed from the expected value. A bond length (or angle) with $|Z| > 5$ is considered an outlier worth inspection. RMSZ is the root-mean-square of all Z scores of the bond lengths (or angles).

Mol	Chain	Bond lengths		Bond angles	
		RMSZ	# Z >5	RMSZ	# Z >5
1	H	0.16	0/1729	0.39	0/2360
2	L	0.20	0/1660	0.43	0/2255
3	A	0.17	0/901	0.41	0/1220
All	All	0.18	0/4290	0.41	0/5835

There are no bond length outliers.

There are no bond angle outliers.

There are no chirality outliers.

There are no planarity outliers.

5.2 Too-close contacts

In the following table, the Non-H and H(model) columns list the number of non-hydrogen atoms and hydrogen atoms in the chain respectively. The H(added) column lists the number of hydrogen atoms added and optimized by MolProbity. The Clashes column lists the number of clashes within the asymmetric unit, whereas Symm-Clashes lists symmetry-related clashes.

Mol	Chain	Non-H	H(model)	H(added)	Clashes	Symm-Clashes
1	H	1684	0	1648	30	0
2	L	1624	0	1576	33	0
3	A	874	0	777	25	0
4	H	4	0	3	1	0
5	A	14	0	13	0	0
6	H	17	0	0	0	0
6	L	12	0	0	0	0
All	All	4229	0	4017	84	0

The all-atom clashscore is defined as the number of clashes found per 1000 atoms (including hydrogen atoms). The all-atom clashscore for this structure is 10.

All (84) close contacts within the same asymmetric unit are listed below, sorted by their clash magnitude.

Atom-1	Atom-2	Interatomic distance (Å)	Clash overlap (Å)
3:A:102:SER:HB3	3:A:108:PHE:HD2	1.39	0.88
3:A:102:SER:HB3	3:A:108:PHE:CD2	2.17	0.78
1:H:35:ASN:HD21	4:H:301:ACT:H1	1.53	0.74
1:H:206:ASN:ND2	1:H:217:ASP:OD1	2.24	0.70
2:L:21:ILE:HD11	2:L:101:THR:HG21	1.72	0.70
1:H:51:ILE:HD13	1:H:72:VAL:HG13	1.74	0.69
3:A:90:ARG:HD2	3:A:110:PHE:HE2	1.57	0.69
3:A:68:SER:OG	3:A:69:GLU:OE1	2.11	0.68
3:A:83:ASP:OD1	3:A:87:THR:OG1	2.12	0.66
2:L:124:LEU:HD12	2:L:182:LYS:HZ1	1.60	0.65
2:L:124:LEU:HD12	2:L:182:LYS:NZ	2.13	0.64
3:A:53:HIS:HA	3:A:70:TRP:HB2	1.79	0.63
1:H:145:ALA:HB2	1:H:195:SER:HB3	1.80	0.62
2:L:114:VAL:HG21	2:L:195:VAL:HG21	1.81	0.61
3:A:48:ARG:NH2	3:A:87:THR:HA	2.17	0.60
2:L:107:ARG:NH1	2:L:108:THR:O	2.35	0.60
1:H:161:VAL:HG22	1:H:207:VAL:HG12	1.85	0.59
3:A:38:ARG:NH1	3:A:73:MET:SD	2.77	0.58
2:L:38:LYS:HD3	2:L:83:ALA:HB2	1.86	0.57
2:L:90:ARG:HG2	2:L:95:LEU:HD23	1.86	0.57
3:A:115:CYS:HB3	3:A:119:THR:HG23	1.87	0.56
2:L:142:GLU:OE1	2:L:142:GLU:N	2.34	0.56
1:H:103:SER:HB2	3:A:92:HIS:CE1	2.42	0.54
2:L:65:GLY:HA3	2:L:70:PHE:HA	1.89	0.53
2:L:191:TYR:HB2	2:L:208:PHE:CE1	2.43	0.53
2:L:121:ASP:HA	2:L:124:LEU:HD23	1.90	0.53
3:A:51:ARG:HD2	3:A:71:ASP:CG	2.34	0.52
3:A:39:LEU:HD23	3:A:40:LEU:N	2.25	0.52
1:H:40:ARG:HH11	1:H:40:ARG:HG2	1.75	0.51
2:L:196:THR:HG22	2:L:203:PRO:HB3	1.91	0.51
2:L:197:HIS:HB3	2:L:200:LEU:HD23	1.90	0.51
1:H:41:PRO:HD3	1:H:92:ALA:HA	1.93	0.50
2:L:120:SER:O	2:L:124:LEU:HD22	2.10	0.50
3:A:117:SER:HA	3:A:147:LYS:NZ	2.26	0.50
1:H:87:THR:HG22	1:H:89:GLU:H	1.76	0.50
2:L:194:GLU:OE1	2:L:205:THR:OG1	2.30	0.50
3:A:38:ARG:NH1	3:A:71:ASP:OD2	2.45	0.49
1:H:36:TRP:CD1	1:H:70:LEU:HD22	2.47	0.49
3:A:54:THR:HG22	3:A:55:THR:HG23	1.95	0.48
3:A:117:SER:HA	3:A:147:LYS:HZ1	1.77	0.48

Continued on next page...

Continued from previous page...

Atom-1	Atom-2	Interatomic distance (Å)	Clash overlap (Å)
1:H:130:VAL:HA	1:H:150:LEU:O	2.14	0.48
2:L:112:PRO:HB3	2:L:138:PHE:HB3	1.96	0.47
1:H:208:ASN:HB3	1:H:210:LYS:NZ	2.30	0.47
1:H:138:LYS:HB2	1:H:138:LYS:HE2	1.79	0.46
3:A:94:CYS:O	3:A:124:HIS:HA	2.15	0.46
1:H:143:GLY:N	1:H:195:SER:OG	2.48	0.46
1:H:98:ARG:NH2	1:H:110:ASP:OD2	2.45	0.46
2:L:29:VAL:HG21	2:L:32:MET:HE2	1.95	0.46
3:A:136:GLN:HG3	3:A:137:PHE:CE1	2.51	0.46
2:L:123:GLN:OE1	2:L:130:SER:N	2.47	0.46
2:L:157:ASN:HD21	2:L:180:LEU:HD13	1.80	0.46
3:A:71:ASP:OD2	3:A:71:ASP:C	2.59	0.45
1:H:29:PHE:HE1	1:H:34:ILE:HD12	1.80	0.45
1:H:47:TRP:CG	2:L:95:LEU:HB3	2.51	0.45
1:H:97:VAL:HG21	1:H:109:PHE:HB3	1.98	0.45
1:H:131:PHE:HB3	2:L:120:SER:HB3	1.98	0.45
1:H:133:LEU:HB3	2:L:117:PHE:CD1	2.52	0.45
3:A:91:HIS:CE1	3:A:93:PRO:HG3	2.52	0.45
1:H:47:TRP:CZ2	1:H:49:GLY:HA2	2.51	0.45
1:H:209:HIS:ND1	1:H:211:PRO:HD2	2.32	0.45
1:H:134:ALA:HB1	1:H:222:PRO:HA	1.98	0.44
1:H:171:GLY:O	1:H:191:VAL:HA	2.18	0.44
2:L:112:PRO:HD2	2:L:200:LEU:CD2	2.48	0.44
2:L:112:PRO:HD2	2:L:200:LEU:HD21	1.99	0.44
2:L:158:SER:HA	2:L:177:THR:O	2.17	0.44
1:H:201:GLN:HG3	1:H:203:TYR:CZ	2.53	0.43
2:L:180:LEU:HD12	2:L:180:LEU:HA	1.81	0.43
3:A:119:THR:OG1	3:A:128:CYS:HB3	2.19	0.43
3:A:90:ARG:NH1	3:A:108:PHE:O	2.52	0.43
2:L:89:GLN:O	2:L:95:LEU:HD22	2.19	0.43
2:L:123:GLN:NE2	2:L:130:SER:HB2	2.33	0.42
1:H:195:SER:O	1:H:198:LEU:HD22	2.18	0.42
2:L:2:ILE:HG13	2:L:92:ASN:OD1	2.20	0.42
3:A:83:ASP:OD2	3:A:87:THR:N	2.41	0.42
3:A:147:LYS:HA	3:A:147:LYS:HD3	1.79	0.41
2:L:46:TRP:C	2:L:47:ILE:HD13	2.45	0.41
2:L:118:PRO:HB3	2:L:208:PHE:CE2	2.55	0.41
3:A:90:ARG:HD2	3:A:110:PHE:CE2	2.46	0.41
1:H:35:ASN:OD1	1:H:50:TRP:HB3	2.21	0.41
2:L:45:ILE:HD11	2:L:48:TYR:HB3	2.01	0.41
1:H:29:PHE:CD2	1:H:77:SER:HA	2.56	0.40

Continued on next page...

Continued from previous page...

Atom-1	Atom-2	Interatomic distance (Å)	Clash overlap (Å)
1:H:210:LYS:HA	1:H:210:LYS:HD3	1.95	0.40
1:H:218:LYS:HA	1:H:218:LYS:HD2	1.69	0.40
2:L:160:GLU:HA	2:L:175:SER:O	2.21	0.40

There are no symmetry-related clashes.

5.3 Torsion angles [i](#)

5.3.1 Protein backbone [i](#)

In the following table, the Percentiles column shows the percent Ramachandran outliers of the chain as a percentile score with respect to all X-ray entries followed by that with respect to entries of similar resolution.

The Analysed column shows the number of residues for which the backbone conformation was analysed, and the total number of residues.

Mol	Chain	Analysed	Favoured	Allowed	Outliers	Percentiles	
1	H	223/225 (99%)	215 (96%)	7 (3%)	1 (0%)	30	49
2	L	211/213 (99%)	201 (95%)	10 (5%)	0	100	100
3	A	114/130 (88%)	109 (96%)	5 (4%)	0	100	100
All	All	548/568 (96%)	525 (96%)	22 (4%)	1 (0%)	44	63

All (1) Ramachandran outliers are listed below:

Mol	Chain	Res	Type
1	H	2	ILE

5.3.2 Protein sidechains [i](#)

In the following table, the Percentiles column shows the percent sidechain outliers of the chain as a percentile score with respect to all X-ray entries followed by that with respect to entries of similar resolution.

The Analysed column shows the number of residues for which the sidechain conformation was analysed, and the total number of residues.

Mol	Chain	Analysed	Rotameric	Outliers	Percentiles	
1	H	192/192 (100%)	184 (96%)	8 (4%)	25	48

Continued on next page...

Continued from previous page...

Mol	Chain	Analysed	Rotameric	Outliers	Percentiles	
2	L	184/184 (100%)	180 (98%)	4 (2%)	47	71
3	A	99/108 (92%)	95 (96%)	4 (4%)	27	51
All	All	475/484 (98%)	459 (97%)	16 (3%)	32	57

All (16) residues with a non-rotameric sidechain are listed below:

Mol	Chain	Res	Type
1	H	84	SER
1	H	85	SER
1	H	86	LEU
1	H	87	THR
1	H	114	THR
1	H	141	SER
1	H	188	SER
1	H	198	LEU
2	L	14	SER
2	L	27	SER
2	L	182	LYS
2	L	184	ASP
3	A	34	CYS
3	A	66	CYS
3	A	85	CYS
3	A	127	HIS

Sometimes sidechains can be flipped to improve hydrogen bonding and reduce clashes. All (3) such sidechains are listed below:

Mol	Chain	Res	Type
1	H	39	GLN
2	L	37	GLN
3	A	98	GLN

5.3.3 RNA ⓘ

There are no RNA molecules in this entry.

5.4 Non-standard residues in protein, DNA, RNA chains ⓘ

There are no non-standard protein/DNA/RNA residues in this entry.

5.5 Carbohydrates [i](#)

There are no oligosaccharides in this entry.

5.6 Ligand geometry [i](#)

2 ligands are modelled in this entry.

In the following table, the Counts columns list the number of bonds (or angles) for which Mogul statistics could be retrieved, the number of bonds (or angles) that are observed in the model and the number of bonds (or angles) that are defined in the Chemical Component Dictionary. The Link column lists molecule types, if any, to which the group is linked. The Z score for a bond length (or angle) is the number of standard deviations the observed value is removed from the expected value. A bond length (or angle) with $|Z| > 2$ is considered an outlier worth inspection. RMSZ is the root-mean-square of all Z scores of the bond lengths (or angles).

Mol	Type	Chain	Res	Link	Bond lengths			Bond angles		
					Counts	RMSZ	$\# Z > 2$	Counts	RMSZ	$\# Z > 2$
5	NAG	A	201	3	14,14,15	0.23	0	17,19,21	0.39	0
4	ACT	H	301	-	3,3,3	1.16	0	3,3,3	1.45	0

In the following table, the Chirals column lists the number of chiral outliers, the number of chiral centers analysed, the number of these observed in the model and the number defined in the Chemical Component Dictionary. Similar counts are reported in the Torsion and Rings columns. '-' means no outliers of that kind were identified.

Mol	Type	Chain	Res	Link	Chirals	Torsions	Rings
5	NAG	A	201	3	-	2/6/23/26	0/1/1/1

There are no bond length outliers.

There are no bond angle outliers.

There are no chirality outliers.

All (2) torsion outliers are listed below:

Mol	Chain	Res	Type	Atoms
5	A	201	NAG	C4-C5-C6-O6
5	A	201	NAG	O5-C5-C6-O6

There are no ring outliers.

1 monomer is involved in 1 short contact:

Mol	Chain	Res	Type	Clashes	Symm-Clashes
4	H	301	ACT	1	0

5.7 Other polymers [i](#)

There are no such residues in this entry.

5.8 Polymer linkage issues [i](#)

There are no chain breaks in this entry.

6 Fit of model and data ⓘ

6.1 Protein, DNA and RNA chains ⓘ

In the following table, the column labelled ‘#RSRZ > 2’ contains the number (and percentage) of RSRZ outliers, followed by percent RSRZ outliers for the chain as percentile scores relative to all X-ray entries and entries of similar resolution. The OWAB column contains the minimum, median, 95th percentile and maximum values of the occupancy-weighted average B-factor per residue. The column labelled ‘Q < 0.9’ lists the number of (and percentage) of residues with an average occupancy less than 0.9.

Mol	Chain	Analysed	<RSRZ>	#RSRZ>2	OWAB(Å ²)	Q<0.9
1	H	225/225 (100%)	-0.07	3 (1%) 74 72	46, 80, 167, 234	0
2	L	213/213 (100%)	-0.04	2 (0%) 81 79	51, 81, 168, 216	0
3	A	118/130 (90%)	0.82	18 (15%) 6 6	80, 151, 308, 355	0
All	All	556/568 (97%)	0.13	23 (4%) 42 37	46, 91, 211, 355	0

All (23) RSRZ outliers are listed below:

Mol	Chain	Res	Type	RSRZ
3	A	54	THR	4.1
3	A	52	VAL	3.9
1	H	144	THR	3.9
3	A	40	LEU	3.6
3	A	124	HIS	3.5
3	A	155	PRO	3.1
3	A	116	ALA	3.1
3	A	117	SER	3.1
3	A	69	GLU	2.9
3	A	32	PRO	2.7
3	A	90	ARG	2.7
3	A	89	CYS	2.6
3	A	39	LEU	2.6
3	A	70	TRP	2.5
3	A	55	THR	2.3
2	L	137	ASN	2.3
2	L	91	ASN	2.2
3	A	137	PHE	2.2
3	A	56	ARG	2.1
3	A	79	PHE	2.1
1	H	142	GLY	2.1
1	H	136	SER	2.1
3	A	139	PHE	2.0

6.2 Non-standard residues in protein, DNA, RNA chains [i](#)

There are no non-standard protein/DNA/RNA residues in this entry.

6.3 Carbohydrates [i](#)

There are no oligosaccharides in this entry.

6.4 Ligands [i](#)

In the following table, the Atoms column lists the number of modelled atoms in the group and the number defined in the chemical component dictionary. The B-factors column lists the minimum, median, 95th percentile and maximum values of B factors of atoms in the group. The column labelled 'Q< 0.9' lists the number of atoms with occupancy less than 0.9.

Mol	Type	Chain	Res	Atoms	RSCC	RSR	B-factors(\AA^2)	Q<0.9
5	NAG	A	201	14/15	0.63	0.12	193,203,217,220	0
4	ACT	H	301	4/4	0.89	0.23	48,63,69,81	0

6.5 Other polymers [i](#)

There are no such residues in this entry.